

AVON

+FREE GIFT
DETAILS INSIDE

CAMPAIGN 11



BIG BLOOMIN' MAKEUP SALE

UP TO 50% OFF



free

fmg Waterproof Lip & Eye Makeup Remover with any \$25 makeup sale purchase, pages 3-17. \$12 value.

Sold separately on page 16. Limited quantities.



big bloomin' makeup sale
UP TO 50% OFF



fmg Glimmer Satin Lipstick
Lightweight creamy formula with pomegranate extract. Buildable coverage. Satin finish. Formulated without parabens and sulfates. .10 oz. net wt. reg. \$12
\$5.99

- | | | | | | | | | |
|--|---|--|--|--|--|--|---|---|
|  Wild Cherry
449-708 |  Blaze
896-880 |  Constellation (Shimmer)
449-731 |  Stellar
726-550 |  Honeyflower
726-531 |  Poppy
897-651 |  Aster
448-769 |  Desert Moon
449-803 |  Windstorm
883-845 |
|  Equinox
449-818 |  Twilight
449-822 |  Cyclone
890-566 |  Sierra Sunset
890-805 |  Luna
895-170 |  Wildrose
898-533 |  Plum Blossom
449-765 |  Dahlia
726-350 |  Rose Angel
897-939 |
|  Aurora
726-584 |  Hibiscus
898-021 |  Wildflower
898-040 |  Eclipse
448-740 |  Tulip
449-712 |  Celestial
895-352 |  Morning Glory
449-750 |  Violet Night
898-548 | |



big bloomin' makeup sale
**UP TO
 50% OFF**

Featured shade: fmg Glimmer Birthday Balm Lip Crayon in Private Party.



TPSY Forever Lip Marker
 Vibrant long-wearing formula with castor and sunflower oils. Matte finish. Formulated without parabens, sulfates and phthalates. .08 fl. oz. reg. \$17
\$11



NEW



fmg Glimmer Matte Lipstick
 Vivid color. Velvety feel. Featherlight non-drying formula with pomegranate extract. Buildable medium-to-full coverage. Formulated without parabens, talc, sulfates and phthalates. .1 oz. net wt. reg. \$12
\$5.99



fmg LOVE Lip Butter
 Sheer, high-shine formula with cupuaçu seed butter, mango extract, and apricot kernel and olive fruit oils. Buildable coverage. Formulated without parabens, sulfates and phthalates. .09 oz. net wt. reg. \$18
\$12.99



fmg Glimmer Birthday Balm Lip Crayon
 Sheer, soft shine formula with non-GMO shea butter. Formulated without parabens and gluten. .1 oz. net wt. reg. \$15
\$9.99

NEW SHADES



TPSY Drunk Shiny Lip Oil
 Glossy formula with jojoba, argan and castor oils. Formulated without parabens, sulfates, phthalates and talc. .13 oz. net wt. reg. \$17
\$11



fmg Glimmer Lip Conditioner
 Leaves dry, cracked lips feeling soft and smooth. With mango seed butter, vitamin E, and jojoba and sunflower seed oils. Formulated without parabens, sulfates, phthalates and talc. .12 oz. net wt. **794-578** reg. \$12
\$5.99



fmg Glimmer Eyeshadow Quad

Soft powder formula lasts all day. No messy fallout. Buildable coverage. Available in Multi or All Matte finishes. Formulated without parabens and fragrance. .21 oz. total net wt. reg. \$15

\$10.99

For Multi Quad finishes, visit Avon.com.



Featured shade: fmg Glimmer Eyeshadow Quad in Calypso.



big bloomin' makeup sale
UP TO 50% OFF



fmg Cashmere Eyeshadow Palette

Long-wearing formula with crease-resistant wear. Satin, matte and sparkling finishes. Formulated without parabens, talc and fragrance. .63 oz. total net wt. reg. \$40

\$28.99



fmg Glimmershadow Liquid Eyeshadow

Long-wearing shimmery color. Lightweight water-resistant formula will not smudge or crease. No messy fallout. Buildable coverage. Ultrafine pearl finish. Formulated without parabens, phthalates and sulfates. .07 fl. oz. reg. \$12

\$5.99

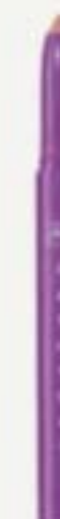


fmg CathyCat Nine Lives Precision Liquid Eyeliner

Slim-tip brush delivers a precise line of water- and sweat-resistant color that will not skip, tug or smudge. Formulated without parabens, sulfates, phthalates and talc. .068 fl. oz.

Blackest Black 800-829
reg. \$18

\$12.99



fmg CathyCat Shadow Gaze Matte Color Stick

Long-wearing formula will not budge or smudge. Buildable and blendable coverage. Matte finish. Formulated without parabens and fragrance. .0476 oz. net wt. reg. \$19

\$12.99





fmg Colors of LOVE Hi-Brow Tinted Brow Gel
 24-hour water-resistant formula with heart-shaped fibers, clay and vitamin E. Won't clump, smudge or flake. Formulated without parabens, phthalates and fragrance. .11 fl. oz. reg. \$18

\$11.99



Blonde 792-499 Soft Brown 792-522 Medium Brown 792-557 Brown Black 792-556



fmg Cashmere Ultimate Volume Mascara
 Long-wearing formula with biotin and collagen. Glossy black finish. Won't budge, smudge or transfer. Formulated without parabens, sulfates and talc. .27 fl. oz. **Rich Black 153-736** reg. \$23
\$14.99



fmg Glimmer SuperShock Volumizing Mascara
 Lash-building formula with plumping fibers. High-gloss finish. Won't clump, smudge or flake. Formulated without phthalates and fragrance. .338 fl. oz. **Black 698-829** reg. \$13
\$8.99



fmg Colors of LOVE Hi-Brow Sculpting Brow Gel
 Clear formula with aloe and hyaluronic acid. Flake-proof. Formulated without parabens, phthalates and fragrance. .11 fl. oz. **536-695** reg. \$18

\$11.99



fmg Glimmer Wash-Off Waterproof Mascara
 Waterproof volume. Washes off easily with soap and water. Formulated without phthalates and fragrance. .21 oz. net wt. **Black 723-107** reg. \$12

\$7.99



fmg Glimmer SuperExtend Nourishing Mascara
 Long-wearing lengthening formula with vitamin E, argan and coconut oils. Won't clump, smudge or flake. Formulated without sulfates and talc. .237 fl. oz.

Black 698-848
Brown Black 698-852 reg. \$13
\$8.99



fmg LOVE at 1st Lash Mascara
 Lash-loving volumizing and lengthening fibers. With lycopene, olive oil and vitamin E. Won't clump, smudge or flake. Formulated without parabens and sulfates. .3 fl. oz. **Blackest Black 698-670** reg. \$18

\$11.99



fmg LOVE at 1st Lash Waterproof Mascara
 Lash-loving, waterproof formula with volumizing and lengthening fibers. With Lashrez, olive oil and vitamin E. Won't clump, smudge or flake. Formulated without parabens and sulfates. .29 fl. oz.

Blackest Black 480-953 reg. \$18
\$11.99





fmg Glimmer Cream Eyeliner
Long-wearing formula with soft sheen finish. Retractable. Formulated without parabens, sulfates and talc. .01 oz. net wt. reg. \$9
\$2.99

- | | | |
|--------------------------|-------------------------|---------------------------|
| | | |
| Emerald Green
334-332 | Starry Night
334-347 | Saturn Grey
334-328 |
| | | |
| Majestic Plum
334-313 | Cosmic Brown
334-351 | Blackest Black
334-366 |



fmg Glimmer Lipliner
Long-wearing creamy formula with vitamin E. Prevents feathering. Matte finish. Retractable. Formulated without parabens, sulfates and talc. .01 oz. net wt. reg. \$9
\$2.99

- | | | | |
|--------------------------|-------------------------|-------------------------|-------------------------|
| | | | |
| Honey Peach
327-721 | Lava Red
327-740 | Passion Red
327-650 | Red Brick
330-451 |
| | | | |
| Mystery Mauve
330-538 | Candy Apple
327-903 | Pink Bouquet
330-356 | Merlot
330-284 |
| | | | |
| Au Naturel
330-318 | Simply Spice
330-614 | Chocolate
330-667 | Perfect Plum
330-887 |



Featured shade: fmg Glimmer Nail Lacquer in Black Hole Burgundy.



fmg Glimmer Diamond Eyeliner
Long-wearing formula with subtle sparkle. Retractable. Formulated without parabens, sulfates and talc. .01 oz. net wt. reg. \$9
\$2.99

- | | | |
|-----------------------------|-------------------------|------------------------|
| | | |
| Sterling
331-960 | Teal Sparkle
331-606 | Olive
331-940 |
| | | |
| Twilight Sparkle
331-553 | Sugar Plum
331-625 | Purple Rain
332-071 |
| | | |
| Smoky Diamond
331-280 | Brown Sugar
331-568 | Black Ice
331-610 |



fmg Glimmer Waterproof Eyeliner
Long-wearing, smudge- and waterproof formula. Retractable. Formulated without parabens, sulfates and talc. .01 oz. net wt. reg. \$9
\$2.99

- | | | | |
|--------------------------|-----------------------|----------------------------|--------------------------|
| | | | |
| Seafoam Green
334-241 | Smoky Grey
332-162 | Blackest Night
229-491 | Midnight Blue
332-158 |
| | | | |
| Blue Skies
334-237 | Raisin
332-200 | Brown Chocolate
332-124 | |



fmg Glimmer Nail Base & Top Coat
Two-in-one base and top coat primes and shields nails. Glossy finish. Free from parabens and phthalates. .4 fl. oz.
018-161
reg. \$12
\$6.99



fmg Glimmer Brow Definer
Long-wearing formula with castor and coconut oils. Smudge-, transfer-, sweat- and waterproof. Retractable. Formulated without parabens, sulfates and talc. .01 oz. net wt. reg. \$9
\$2.99

- | | | |
|-------------------------|-----------------------|---------------------|
| | | |
| Light Blonde
331-109 | Blonde
331-113 | Tawny
331-128 |
| | | |
| Light Brown
331-151 | Dark Brown
331-147 | Brunette
331-242 |



fmg Glimmer Liquid Eyeliner
Quick-drying, long-lasting formula. Transfer-, sweat- and waterproof. Matte finish. Formulated without parabens, phthalates and fragrance. .037 fl. oz.
Blackest Black 354-380
reg. \$13
\$8.99



fmg Glimmer Always On Point Eyeliner
Built-in sharpener. Smudge- and waterproof. Formulated without parabens, sulfates and talc. .01 oz. net wt. reg. \$10
\$7.99

- | | |
|------------------|------------------------|
| | |
| Black
016-389 | Black Brown
016-446 |



fmg Glimmer Nail Lacquer Eraser Pen
For a clean and perfected mani. Won't dry out nails or cuticles. Free from parabens and phthalates. .135 fl. oz.
704-443
reg. \$12
\$6.99

big bloomin' makeup sale
UP TO 50% OFF



fmg Glimmer Nail Lacquer
Nail-strengthening, long-wearing, no-chip formula. Gel-like cushion texture. Formulated without parabens and phthalates. .4 fl. oz. reg. \$12
\$6.99

- | | | | | |
|-----------------------------------|--------------------------------------|----------------------------------|------------------------------------|---------------------------------------|
| | | | | |
| SATIN Lost Galaxy Plum
598-911 | SATIN Black Hole Burgundy
018-286 | SATIN Supernova Red
018-267 | SATIN Night Sky Berry
602-658 | SATIN High Magnitude Mauve
018-840 |
| | | | | |
| SATIN Lunar Tan
602-753 | SATIN Cool Comet
602-830 | SATIN Full Moon Flush
018-730 | METALLIC Meteorite Rose
019-369 | METALLIC Golden Galaxy
019-354 |



big bloomin'
makeup sale
**UP TO
50% OFF**



fmg Match Filter Serum Tint Foundation
Instantly hydrates, blurs flaws and evens tone. With hyaluronic acid, vitamin E and berry complex. Buildable coverage. Demi-matte finish. Formulated without talc, parabens and fragrance. .31 oz. net wt. reg. \$21

\$12.99



fmg Match Wand Correcting Stick
Neutralizes unevenness, brightens and color corrects. Long-wearing formula with shea butter and vitamin E. Formulated without parabens, phthalates and sulfates. .21 oz. net wt. reg. \$18

\$8.99



fmg GLOKOLOR Lip Serum Pencil
Refreshes and smooths lips. With peppermint and argan oils. Formulated without parabens and fragrance. .06 oz. net wt. **787-508** reg. \$20

\$12.99



fmg Match Set Finishing Powder
Controls shine, visibly blurs pores and fine lines and sets makeup. Mineral-infused formula. Matte finish. Formulated without talc, parabens and fragrance. .22 oz. net wt. **932-472** reg. \$19

\$8.99



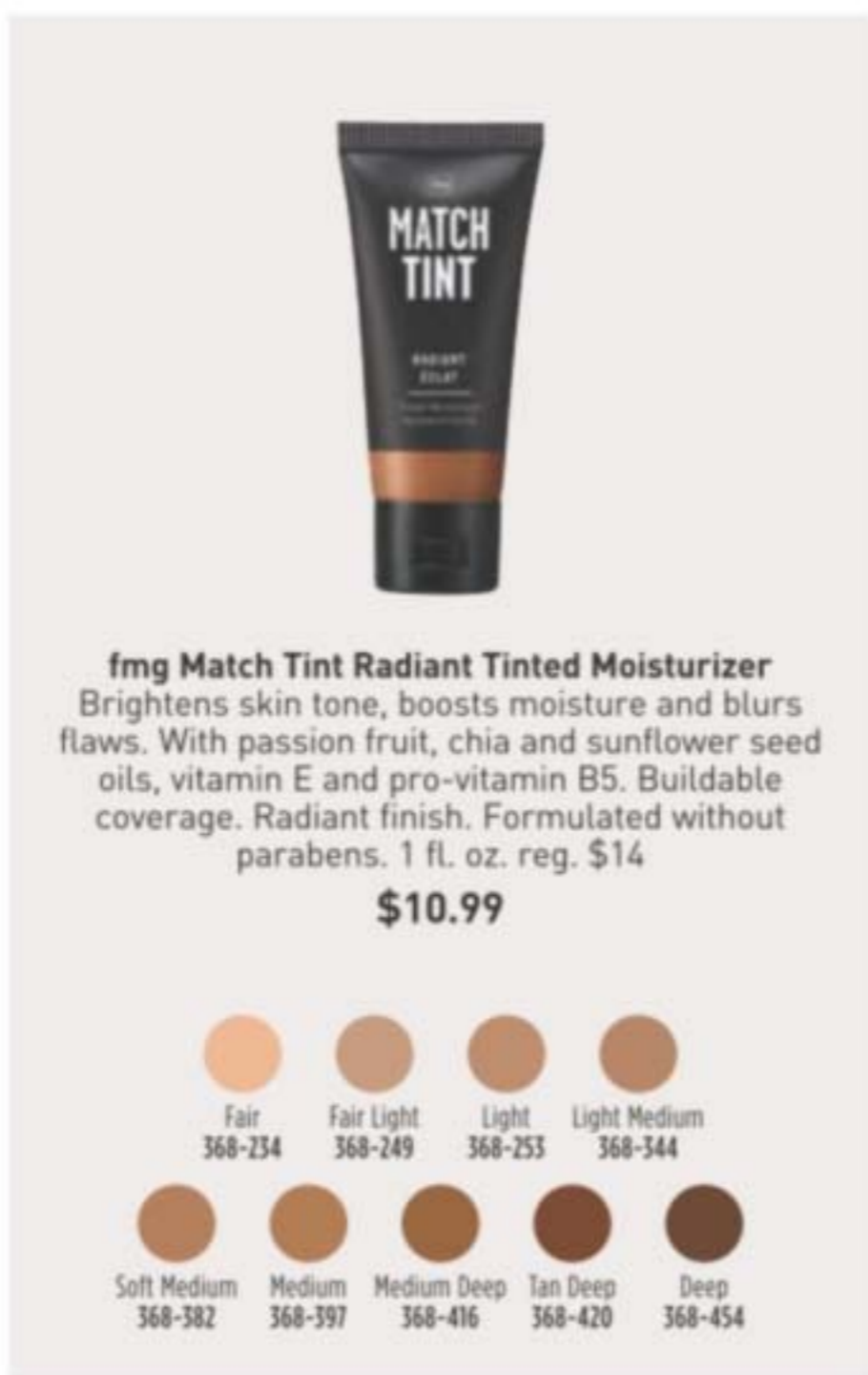
fmg GLOKOLOR Hybrid Face Mist
Instant boost of moisture to refresh skin. With aloe vera, agave and algae extracts. Formulated without parabens and sulfates. 2.7 fl. oz. **787-599** reg. \$25

\$16.99



fmg Match Dust Finishing Powder
Diffuses light, visibly blurs pores and controls shine. Blend of ultrafine rose quartz, ruby and tourmaline. With antioxidant green tea extract. Soft matte finish. Includes no-spill twist-and-lock sifter. Formulated without talc, oil and parabens. .21 oz. net wt. reg. \$17

\$10.99



fmg Match Tint Radiant Tinted Moisturizer
Brightens skin tone, boosts moisture and blurs flaws. With passion fruit, chia and sunflower seed oils, vitamin E and pro-vitamin B5. Buildable coverage. Radiant finish. Formulated without parabens. 1 fl. oz. reg. \$14

\$10.99



fmg Match Prime Face Perfector
Flaw-blurring mattifying oil-free formula visibly minimizes pores and fine lines. Sheer coverage. Matte finish. Formulated without parabens. 1 fl. oz. **103-744** reg. \$17

\$11.49



fmg GLOKOLOR Hybrid Face Primer
Softens the appearance of imperfections. With aloe vera, agave and algae extracts. Formulated without parabens and sulfates. 1 fl. oz. **787-637** reg. \$25

\$16.99



fmg Glimmer Lip & Cheek Stain
Highly pigmented, long-wearing gel formula. Brush-tip applicator. Transfer-proof. Formulated without parabens and fragrance. .19 fl. oz. reg. \$17

\$10.99



Plumeria 628-851
Rosette 628-852



fmg Glimmer Powder Illuminator
Lightweight buildable formula with vitamin E. Radiant finish. Formulated without parabens, phthalates and fragrance. .35 oz. net wt. reg. \$14

\$9.99



Rosé 463-628
Prosecco 905-580



fmg Glimmer Be Blushed Cheek Color
Creamy formula with vitamin E. Buildable coverage. Dewy finish. Formulated without parabens, phthalates and fragrance. .14 oz. net wt. reg. \$15

\$10.99



Icy Petal 022-854
Blushing Nude 022-911
Golden Rose 022-840
Tropical Peach 022-964
Crushed Berry 022-945



fmg Glimmer Powder Blush
Weightless formula with ultrafine pearl and vitamin E. Buildable coverage. Matte finish. Formulated without parabens, phthalates and fragrance. .28 oz. net wt. reg. \$14

\$9.99

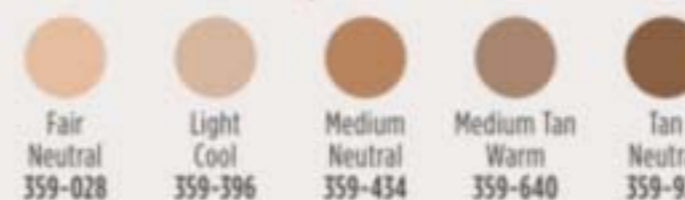


Petal Pink 618-209
Pink Passion 618-213



fmg Cashmere Cream Concealer
Long-wearing formula helps to camouflage dark circles, acne and uneven skin tone. With hyaluronic acid and collagen. Full-coverage. Matte finish. Formulated without parabens, phthalates, talc and fragrance. .21 oz. net wt. reg. \$17

\$11.99



Fair Neutral 359-028
Light Cool 359-396
Medium Neutral 359-434
Medium Tan Warm 359-640
Tan Neutral 359-931



fmg Cashmere Under Eye Primer
Helps diminish the look of dark circles and fine lines. With caffeine, green tea extract and vegan collagen. Formulated without parabens, phthalates and fragrance. .317 oz. net wt. 010-429 reg. \$24

\$17.99



TPSY I Want to Highlight You Liquid Highlighter
Instant boost of moisture. With ultra-fine pearls for a naturally radiant finish. Fragrance-free. 1.01 fl. oz. 615-965 reg. \$21

\$11.99



fmg Colors of LOVE Glow Balm Duo Illuminating Stick
Sheer formula with blend of pomegranate extract, mango and shea butter, vitamins E and C, and avocado oil. Soft, pearlescent finish. Formulated without parabens, phthalates and fragrance. .28 oz. total net wt. 924-573 reg. \$22

\$10.99



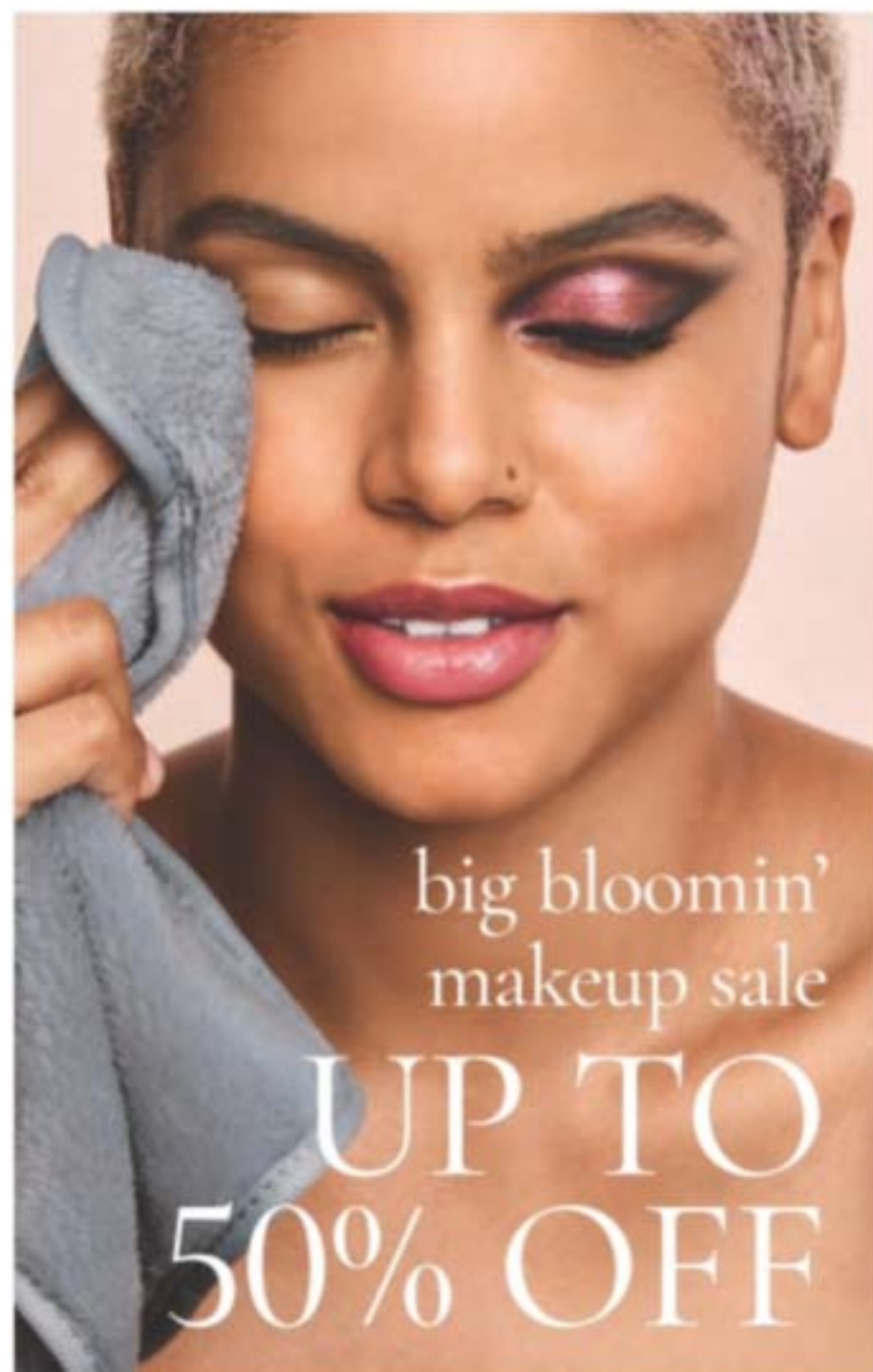
fmg Cashmere Multi-Peptide Eyeshadow Primer
Keeps eyeshadow in place. Skin-loving ingredients help to reduce the appearance of fine lines and visibly plump and strengthen the skin barrier. With Matrixyl 3000 peptide blend, hyaluronic acid, collagen and panthenol. Formulated without parabens and talc. .31 oz. net wt. 906-385 reg. \$22

\$16.99



fmg Cashmere Multi-Peptide Face Primer
Revitalizing ingredients help to smooth the appearance of fine lines and pores and visibly plump and strengthen the skin barrier. With Matrixyl 3000 peptide blend, hyaluronic acid, collagen and niacinamide. Formulated without parabens, talc and fragrance. 1 fl. oz. 739-284 reg. \$23

\$17.99



big bloomin'
makeup sale
**UP TO
50% OFF**



fmg Unready Makeup Remover Cloth
Dual-sided. Reusable and travel-friendly. 100% polyester. 9 7/8" sq. Machine wash and dry. Imported. **230-176** reg. \$14
\$9.99



Daily Beauty Tools Tweezers
Amp up your beauty routine with angled tweezers. Stainless steel. 3 1/2" L. **747-020** reg. \$4
\$2.99



fmg Makeup Remover Wipes
With vitamin E and aloe, chamomile, cucumber, marshmallow root and oat extracts. Resealable pack of 24 wipes. Formulated without parabens, gluten, sulfates, phthalates and fragrance. **333-867** reg. \$10
\$7.49



fmg Moisturizing Eye Makeup Remover Lotion
Cleans, refreshes and moisturizes as it whisks away eye makeup. Formulated without parabens, sulfates, phthalates. 2.5 fl. oz. **543-272** reg. \$8
\$5.99




fmg Vanity Organizer
Four compartments with two removable inside dividers, three outer pockets and lattice elastic straps. Folds for easy storage. 9 1/2" L x 6" W x 5" H. Polyester. Imported. **022-816** reg. \$30
\$22.99



fmg Waterproof Lip & Eye Makeup Remover
Dual-layer oil and water remover leaves skin fresh and clean. With ether, silicone, hydrocarbon and ester oils. Formulated without mineral oil, tar, talc and parabens. 3.7 fl. oz. **352-243** reg. \$12
\$7.99



fmg Oil Rewind Roller Ball
Reusable 360° rotating volcanic-stone roller instantly absorbs oil and grease without disturbing makeup. 3" L x 1" W. Plastic handle, protective cap. Imported. **508-294** reg. \$18
\$13.99



fmg Flawless Complexion Sponge
Dual-ended: Allover makeup application rounded end, and contouring and concealing flat end. 2 1/2" L x 1 1/2" W. 100% PU, latex-free. **140-160** reg. \$10
\$6.99



fmg Complexion Blending Brush
Dual-ended: Rounded buffing foundation brush and concealer brush. 6 1/2" L. Synthetic bristles. **933-210** reg. \$23
\$16.99



fmg Set & Fix Spray
Controls oil and helps keep makeup smudge-proof. Non-greasy, non-sticky. Formulated without parabens, sulfates, phthalates and silicones. 1.7 fl. oz. **416-707** reg. \$15
\$9.99



fmg Kabuki Brush
Soft, angled brush for pressed or loose powder formulas. Retractable with protective cap. 3 3/4" L x 1" diam. Synthetic bristles. **732-370** reg. \$19
\$13.99



fmg Precision Eye Brush
Dual-ended: Pointed pencil brush and angled eyeliner brush. 5 1/4" L. Synthetic bristles. **933-187** reg. \$15
\$10.99



fmg Express Makeup Brush Wash
Easily removes dirt, oil and makeup. With aloe vera and green tea extract. Formulated without alcohol and sulfates. 1 fl. oz. **141-368** reg. \$14
\$9.99



fmg Blush & Contour Brush
Dual-ended: Angled contour brush and tapered, oval blush brush. 7 1/4" L. Synthetic bristles. **933-259** reg. \$22
\$15.99



fmg Eyeshadow Blending Brush
Dual-ended: Crease brush and all-over eyeshadow brush. 6" L. Synthetic bristles. **933-320** reg. \$15
\$10.99

NEW BEYOND GLOW

Get that
glass-skin look

Smooth
Translucent
Glowing

The New Star Ingredient: SNAIL MUCIN Complex



Brightens ————●

Moisturizes ————●

Retexturizes ————●

Our cream and serum, formulated with snail mucin complex, moisturize and help visibly brighten skin with a clear, cushiony yet fast-absorbing texture that disappears into the skin while plumping it up with hydration.

Infused with powerhouse pairings of tried-and-true ingredients tailored for your skin's needs. Add them to your existing regimen or create a new one. Get glowing while you visibly diminish dullness, brighten skin and restore healthy radiance.

This image was generated using artificial intelligence.

95%

said discolorations looked reduced and skin's fine lines appeared softer



Clinically tested to improve skin tone and brightness

(01) Beyond Glow Snail Mucin Complex + Niacinamide Serum

Visibly brightens, moisturizes and retexturizes. With snail mucin complex and niacinamide, also known as vitamin B3, which helps even skin tone and strengthen the skin barrier. 3.3 fl. oz. 255-574 reg. \$34

\$25.99



Based on a clinical study of 23 subjects.

(02) Beyond Glow Snail Mucin Complex + Panthenol Cream

Moisturizes while it visibly improves texture and elasticity. With snail mucin complex and panthenol, which helps lock in moisture. 3.7 fl. oz. 255-536 reg. \$34

\$25.99



Based on a clinical study of 23 subjects.



Brighten

Clinically tested to revitalize skin in 2 weeks*

Beyond Glow Vitamin C 6% + Ferulic Acid Serum

Clinically tested to improve skin radiance in 3 days.* Vitamin C visibly improves radiance for glowing skin. Ferulic acid, a powerful antioxidant, helps protect skin from environmental stressors. 1 fl. oz. 255-589 reg. \$38

\$29.99

*Based on an instrumental efficacy test on 30 subjects.



Refine + Soften

Beyond Glow Niacinamide 10% + Panthenol Serum

Helps improve even tone and elasticity. Niacinamide, also known as vitamin B3, helps even skin tone and strengthen the skin barrier. Panthenol, also known as provitamin B5, helps lock in moisture. 1 fl. oz. 255-612 reg. \$38

\$29.99



Hydrate

Beyond Glow Hyaluronic Acid 1.5% + Ferulic Acid Serum

Hyaluronic acid, known as a "moisture magnet," helps infuse skin with instant and lasting hydration. Ferulic acid, a powerful antioxidant, helps defend skin from environmental stressors. 1 fl. oz. 255-593 reg. \$38

\$29.99

Just look at the antioxidant effect!

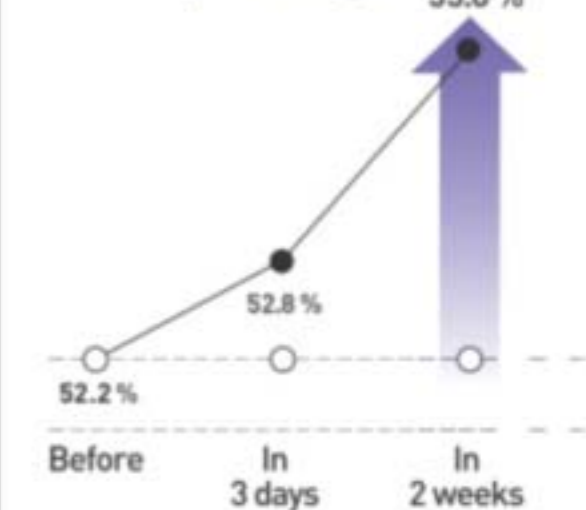
Beyond Glow Vitamin C 6% + Ferulic Acid Serum



Clinically tested

Glowing skin in 2 weeks

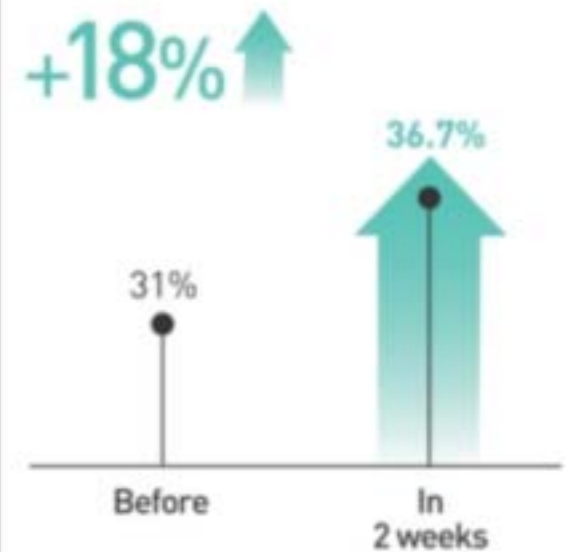
Increase in skin radiance percentage*



*Clinical result for Beyond Glow Vitamin C 6% Serum

Revitalizing skin in 2 weeks

Increase in skin resilience*



*Clinical result for Beyond Glow Vitamin C 6% Serum

Start a confidence-building antioxidant regimen



Brightening Duo

Add a clinically tested radiance enhancer to your antioxidant Vitamin C routine.

Vitamin C
+ Ferulic Acid

Niacinamide
+ Panthenol



Hydrating Duo

Add instant and lasting hydration to your antioxidant Vitamin C routine.

Vitamin C
+ Ferulic Acid

Hyaluronic Acid
+ Ferulic Acid



Glowing Duo

Add a glow with snail mucin complex and feel a powder-soft finish to your antioxidant Vitamin C routine.

Vitamin C
+ Ferulic Acid

Snail Mucin
+ Niacinamide

3 in only
3 mins



Galvanize your results

Beyond Glow
Galvanic Booster Device

Give your skin a spa treatment at home in three minutes. Red LED light helps tone the appearance of skin texture, enhances your radiant glow and visibly promotes skin health. On-the-go compact design. Automatically turns on and off. Uses two cell batteries. 255-627 reg. \$60

\$49.99

Boosts absorption
of vitamin C by

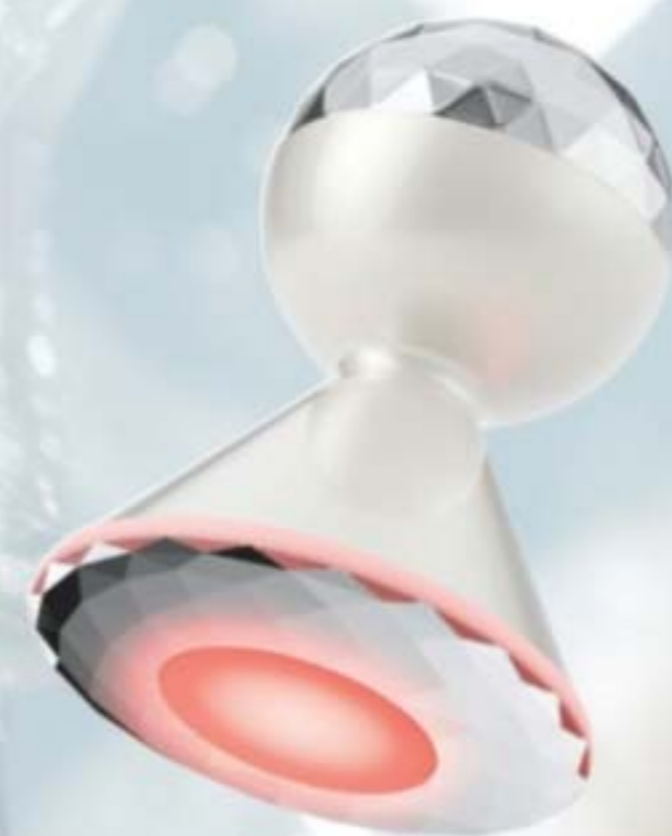
2.2x*

*Evaluated by Dongduk Women's University Industry-Academia Cooperation (ex vivo test, DPPH, Oct. 13 to 24, 2023)

This image was generated using artificial intelligence.

BEYOND GLOW

SKIN CARE



Galvanic Booster Device

Boosts absorption of vitamin C
by 2.2X*




Isa Knox Anew Clinical Collagen Booster Firming Cream
 With peptides that boost skin renewal to help restore youthful bounce. With moisturizing and skin-plumping niacinamide and squalane. Hygienic, airless pump. 1.7 fl. oz. 069-327 reg. \$45
\$29.99

NORMAL TO DRY SKIN
Isa Knox LXNEW Clean Nourishing Cream Cleanser
 Removes impurities and makeup while restoring moisture. 5 fl. oz. 717-990 reg. \$14
\$10.99



free
 WITH ANY \$40 SKIN CARE PURCHASE, PAGES 20-40. LIMITED QUANTITIES.

See youthful bounce return

Anew Clinical **Collagen Booster** formulas contain **peptides** and other **skin-renewing ingredients** that help visibly restore **firmness** and **elasticity**.



Isa Knox Anew Clinical Collagen Booster Rejuvenating Serum Ampoules
 Powerful peptide blend boosts skin renewal. 60 capsulated single-use ampoules. .008 fl. oz. each. 803-077 reg. \$66
\$54.99

Isa Knox Anew Clinical Collagen Booster Eye Lift Pro Dual Eye System
 In just 7 days, eye area looks lifted, firmer, tighter. With a peptide complex to help boost skin renewal. Gel, .33 fl. oz. Cream, .33 fl. oz. 961-406 reg. \$40
\$24.99

Isa Knox Anew Clinical Collagen Booster Microneedling Polisher
 At-home alternative to micro-dermabrasion and micro-needling. Visibly diminishes pores, fine lines and wrinkles. 1.7 fl. oz. 798-592 reg. \$34
\$20.99



**Isa Knox Anew Clinical
Revitalize & Reveal Intensive Peel**
Intensive resurfacing peel similar to pro acid peels. With AHA and PHA. 1 fl. oz. 780-025 reg. \$45
\$29.99



**Isa Knox Anew Clinical
Revitalize & Reveal
Resurfacing Expert Smoothing Fluid**
79% as effective as a pro micro-dermabrasion without the same irritation. 1 fl. oz. 852-282 reg. \$44
\$29.99

**Isa Knox Anew Clinical
Revitalize & Reveal
Resurfacing Lotion for Body**
Exfoliates with gentle yet effective AHA lactic acid. Moisturizes with shea butter. 5 fl. oz. 390-785 reg. \$34
\$20.99



**Isa Knox Anew Clinical
Revitalize & Reveal
Advanced Wrinkle Corrector**
In just two weeks, wrinkles appear reduced. 1.7 fl. oz. 914-576 reg. \$40
\$27.99



**Isa Knox Anew Clinical
Revitalize & Reveal
Extra Strength Retexturizing Peel**
Results similar to a 35% pro glycolic peel.* 30 fragrance-free pads. 2" diam. 632-774 reg. \$40
\$27.99

*In 6 out of 8 attributes tested over a 7-week period.



Anew Power Serum
Apply AM/PM after cleansing, before moisturizing. 1 fl. oz. 417-187 reg. \$45
\$28.99



**Isa Knox Anew Clinical
Line Eraser with Retinol
Targeted Treatment**
For targeted lines and wrinkles (expression lines) such as around forehead and mouth. .67 fl. oz. 925-159 reg. \$40
\$27.99



**Isa Knox Anew Clinical
Line Eraser
with Retinol Treatment**
Great for first-time retinol users. Use AM/PM. 1 oz. net wt. 763-330 reg. \$45
\$29.99



**Isa Knox Anew Clinical
Line Eraser with Retinol [1.0%]
Advanced Retinol Serum**
Our highest dose of retinol. Dramatically reduces the appearance of fine lines, wrinkles and dark spots. Use PM. 1 fl. oz. 390-751 reg. \$50
\$40.99



Anew Ultimate Multi-Performance Night Cream
It works while you sleep to revive and recreate the look of youthful skin. 1.7 oz. net wt. **763-311** reg. \$42 **\$27.99**



Anew Platinum Night Cream
Skin appears smoother overnight, resculpted over time. 1.7 oz. net wt. **753-439** reg. \$42 **\$27.99**



Anew Platinum Sculpting Body Serum
Skin all over body looks more youthful. 6.7 fl. oz. **506-249** reg. \$45 **\$28.99**



Anew Ultimate Night Repair Serum
See improved tone and texture. With peptides, licorice, hyaluronic acid and niacinamide. Use PM before moisturizer. 1 fl. oz. **625-355** reg. \$45 **\$28.99**



Anew Ultimate Multi-Performance Day Cream Broad Spectrum SPF 25
See wrinkles fade and youthful vibrance return. 1.7 oz. net wt. **763-307** reg. \$42 **\$27.99**



Anew Platinum Age Delay Serum
With niacinamide, panthenol and peptide. Formulated to visibly boost elasticity for a firmer look. Use AM and PM before moisturizer. 1 fl. oz. **625-609** reg. \$45 **\$28.99**



Anew Platinum Day Cream Broad Spectrum SPF 25
With Paxillium Technology to help defy gravity and Radiant Microspheres to help visibly restore radiance. 1.7 oz. net wt. **184-146** reg. \$42 **\$27.99**



Anew Ultimate Multi-Performance Eye System
Visibly smooths crow's-feet and de-puffs under-eye bags. Cream, .5 oz. net wt. Elixir, .09 oz. net wt. **854-433** reg. \$42 **\$27.99**



Anew Ultimate Supreme Eye Balm
Moisturizing formula infused with squalane, sunflower seed oil and antioxidant vitamin E. Wear alone or under makeup. 0.1 oz. net wt. **625-340** reg. \$45 **\$28.99**



Anew Ultimate Supreme Advanced Performance Crème
With Black Pearl Extract. See a dramatic difference in deep wrinkles and skin radiance. 1.7 oz. net wt. **014-735** reg. \$60 **\$39.99**



Anew Ultimate Supreme Dual Elixir
With Black Pearl Extract and precious oils. See a dramatic difference in even advanced signs of aging. Serum/Oil, .67 fl. oz. each. **588-421** reg. \$60 **\$39.99**



Anew Platinum Firm and Sculpt Cream for Neck and Chest
With Peptide Lifting Complex to treat the skin on your neck and chest, which is more vulnerable to wrinkles and sagging. Use PM after cleansing. 1.7 oz. net wt. **763-584** reg. \$42 **\$27.99**

Anew Platinum Eye & Lip Cream
Dual applicator. .5 oz. net wt. **902-614** reg. \$42 **\$27.99**



Isa Knox LXNEW Ultimate Rejuvenating Serum
 With paeonol and ceramides, visibly improves elasticity, radiance and skin texture. Reduces the appearance of wrinkles. 1.35 fl. oz. **756-624** reg. \$56
\$44.99



Isa Knox LXNEW Ultimate Rejuvenating Eye Serum
 Infused with paeonol and niacinamide to help visibly reduce fine lines around the eye area and depuff under-eye bags. 1 fl. oz. **567-177** reg. \$50
\$39.99



Isa Knox LXNEW Platinum Sculpting Neck and Chest Cream
 With hibiscus extract, ceramide, shea butter, panthenol and squalane to help skin appear firmer, smoother and lifted. 1.7 fl. oz. **548-069** reg. \$50
\$39.99



Isa Knox LXNEW Ultimate Rejuvenating Day Cream
 With paeonol, visibly reduces wrinkles and improves the look of elasticity, radiance and skin texture. With nutmeg to help visibly even skin tone. 1.7 fl. oz. **351-892** reg. \$50
\$39.99



Isa Knox LXNEW Ultimate Rejuvenating Multi-Corrector
 Paeonol-infused serum with niacinamide and panthenol. Skin looks smoother and more youthful. 1.7 fl. oz. **496-595** reg. \$44
\$34.99



Isa Knox LXNEW Ultimate Rejuvenating Dual Night Cream
 With paeonol and macadamia oil. Volume Cream: Rice bran extract helps visibly plump skin. Firming Cream: Helps boost collagen and elastin. Each, .85 fl. oz. **564-015** reg. \$50
\$39.99



Isa Knox LXNEW Ultimate Rejuvenating Balm Stick
 With peony extract, plus a firming complex featuring castor, moringa and argan oils. Apply to forehead, eyes and neck, or anywhere you want extra care. .24 fl. oz. **267-593** reg. \$25
\$19.99



Isa Knox LXNEW Platinum Sculpting Oil Serum
 With uplifting hibiscus extract, madecassoside and peptides. 1.35 fl. oz. **318-720** reg. \$56
\$44.99

Isa Knox LXNEW Platinum Sculpting Day Cream
 Infused with moisturizing hibiscus extract and ceramide. Visibly tightens facial contours. 1.7 fl. oz. **318-845** reg. \$50
\$39.99

Isa Knox LXNEW Platinum Sculpting Eye Cream
 With hibiscus extract, panthenol and antioxidants. Leaves delicate eye area looking firmer, brighter and more defined. .84 fl. oz. **318-883** reg. \$50
\$39.99

Isa Knox LXNEW Platinum Sculpting Night Cream
 With firming hibiscus extract, ceramide, squalane and shea butter. Skin looks firmer, smoother and more defined. 1.7 fl. oz. **318-850** reg. \$50
\$39.99

A BRIGHT IDEA FOR YOUR SKIN

Wake up with skin that looks **softer, smoother, more vibrant**.
This overnight mask, formulated with powerful antioxidant **vitamins C and E**,
improves skin texture and **boosts radiance**.



Anew Vitamin C Overnight Radiant Mask
Revitalizing formula with niacinamide, shea butter and sunflower seed oil. Apply after cleansing, treating and moisturizing. 1.7 fl. oz. **157-086** reg. \$36
\$19.99



Anew Vitamin C Antioxidant Lip Treatment
Nourishes lips with vitamins C and E. .13 oz. net wt. **784-547** reg. \$14
\$7.99



Anew Vitamin C Brightening Serum
Skin is visibly energized and brightened with the power of 10% pure vitamin C. 1 fl. oz. **522-066** reg. \$44
\$25.99



Anew Vitamin C Brightening Eye Cream
Visibly reduces dark circles. Under-eye area looks brighter and more even-toned. .5 fl. oz. **953-602** reg. \$34
\$22.99



Anew Vitamin C Nourishing Body Butter
With hydrating shea butter and niacinamide, plus vitamins C and E to help restore radiance. Fruity-floral and citrus scent. 7.8 fl. oz. **443-767** reg. \$32
\$19.99



Anew Vitamin C Glow Body Scrub
Sugar-based formula with pineapple and papaya enzymes and coffee seed extract exfoliates dry, dull skin. Citrus scent. 9 oz. net wt. **443-752** reg. \$36
\$19.99



Anew Vitamin C Dry Body Oil
Soothing sunflower seed and jojoba oils help keep skin feeling supple. 3.4 fl. oz. **074-432** reg. \$34
\$19.99



Anew Vitamin C Illuminating Body Serum
Light-reflecting pigments leave skin looking luminous. 6.7 fl. oz. **157-071** reg. \$34
\$19.99



Anew Vitamin C Illuminating Priming Moisturizer
Instantly illuminates, hydrates and blurs imperfections. Wear alone or under makeup. 1.7 fl. oz. **914-671** reg. \$34
\$22.99



Isa Knox Anew Solaire Everyday Mineral Face Protection Cream Broad Spectrum SPF 50
Lightweight formula with zinc oxide. Suitable for sensitive skin. Water-resistant [40 minutes]. 1.7 fl. oz. **911-467** reg. \$32
\$24.99



Isa Knox Anew Solaire Active Face & Body Protection Lotion Broad Spectrum SPF 50
2.7 fl. oz. **154-948** reg. \$35
\$27.99



Isa Knox Anew Solaire Everyday Face Protection Lotion Broad Spectrum SPF 50
1.7 fl. oz. **911-400** reg. \$32
\$24.99



belif
The True Cream - Moisturizing Bomb
 For dryness, loss of elasticity and firmness. 26 hours of long-lasting moisture.*
 1.68 fl. oz.
948-463
 reg. \$42
\$38



belif
The True Cream - Aqua Bomb
 For dryness, dullness and uneven texture. 70% increase in hydration levels.*
 1.68 fl. oz.
235-709
 reg. \$42
\$38



Anew Hydra Fusion De-Puffing Eye Serum
 With caffeine and hyaluronic acid. Cooling ceramic tip. Instantly boosts hydration around eye area by 3X. .5 fl. oz. **137-737**
 reg. \$34
\$22.99



Anew Hydra Fusion Cleansing Micellar Water
 No need to rinse off. 10.1 fl. oz.
139-380 reg. \$14
\$9.99



Anew Hydra Fusion 1.5% Hyaluronic Acid Serum
 With three different molecular sizes of HA that reach multiple layers of skin's surface to visibly plump skin. 1 fl. oz. **290-390** reg. \$44
\$25.99



OILY TO NORMAL SKIN
Isa Knox LXNEW Clean Soothing Whipped Oil Cleanser
 Helps eliminate impurities and excess oil. 5 fl. oz.
718-025
 reg. \$19
\$14.99



NORMAL, DRY AND COMBINATION SKIN
Isa Knox LXNEW Clean Balancing Gel Cleanser
 Gel to foam. Helps remove oil and impurities while rebalancing skin. 5 fl. oz. **718-010**
 reg. \$14
\$10.99



NORMAL, DRY, COMBINATION, OILY SKIN
Isa Knox LXNEW Clean 2-in-1 Exfoliating Cleansing Balm
 Melts away makeup and impurities. Spatula included. 3.5 oz. net wt. **718-006** reg. \$32
\$25.99



NORMAL TO DRY SKIN
Isa Knox LXNEW Clean Nourishing Cream Cleanser
 Removes impurities and makeup while restoring moisture. 5 fl. oz. **717-990**
 reg. \$14
\$10.99



Anew Hydra Fusion Nighttime Facial Treatment
 Hyaluronic acid plus shea butter beads. Relaxing rose scent. 1.7 oz. net wt. **139-429** reg. \$34
\$22.99



Anew Hydra Fusion Gel Cream
 72 hours of long-lasting hydration. 1.7 oz. net wt. **266-893** reg. \$34
\$22.99



Farm Rx Green Goddess Facial Oil
100mg broad spectrum CBD. Suitable for sensitive skin. Rich in omega acids and vitamin E. Use AM/PM after cleansing and serum. Fragrance-free. 1 fl. oz. 934-733 reg. \$51
\$40.99



Farm Rx Pineapple Plus Radiance Boosting Mask
With natural alpha hydroxy acid, plus an antioxidant-rich fruit complex to help skin look smoother and more radiant. 3 fl. oz. 456-266 reg. \$35
\$27.99



Farm Rx Pineapple Plus Instant Glow Toner
Revitalizing toner helps visibly minimize pores. Use AM and PM, after cleansing. 5 fl. oz. 027-382 reg. \$25
\$17.99



Farm Rx Super Greens Multivitamin Moisture Cream
Locks in essential nourishing moisture. Use daily after cleansing, serums and treatments. 3.04 fl. oz. 314-141 reg. \$37
\$29.99



Farm Rx Super Greens Refreshing Gel Cleanser
With soothing aloe. Convenient pump. Eco-friendly packaging and glass bottle. Use AM/PM. 8.11 fl. oz. 913-049 reg. \$31
\$24.99
Refill (not shown) 16.9 fl. oz. 913-053 reg. \$35
\$27.99



Farm Rx Super Greens Cooling Gel
Lightweight moisturizer helps soothe and cool skin. Apply a thicker layer, after serum, as a mask to hydrate overnight as needed. 3.04 fl. oz. 354-227 reg. \$37
\$29.99



Farm Rx Super Greens Refreshing Eye Cream
With nourishing Super Greens formula, plus cucumber extract. Hydrates and helps skin feel soothed. Green tea helps visibly de-puff. 1 fl. oz. 412-826 reg. \$32
\$24.99

why pineapple extract?

Pineapple extract is known to contain natural alpha hydroxy acid (AHA), which helps reveal visibly brighter skin.



Farm Rx Pineapple Plus Brightening Jelly Serum
Helps improve dull, dry skin and reduce the appearance of fine lines, wrinkles and pores. Skin looks radiant. 1 fl. oz. 027-440 reg. \$41
\$32.99

why bakuchiol?

It's a gentle plant-based alternative to retinol that helps visibly reduce wrinkles and discolorations without the same irritation.



Farm Rx Bakuchiol Cream
Moisturizing cream visibly reduces wrinkles. Vegan. Hypoallergenic. Suitable for sensitive skin. 3.04 fl. oz. 004-044 reg. \$45
\$35.99



Farm Rx Bakuchiol Eye Cream
Visibly reduces dark circles, fine lines and wrinkles without irritating the delicate eye area. 1 fl. oz. 565-834 reg. \$37
\$29.99



Farm Rx Bakuchiol Serum
Lightweight oil-textured formula targets fine lines, wrinkles and dullness without irritation. 1 fl. oz. 247-417 reg. \$45
\$35.99



Rice Water Bright Rice Bran Gentle Exfoliating Cleanser
Daily scrub with organic rice bran powder, rice bran oil and hydrated silica. 10.1 fl. oz. **376-865** reg. \$19
\$14.99



Rice Water Bright Facial Cleansing Lotion
Helps brighten skin. Gently removes makeup and impurities. 6.7 fl. oz. **720-184** reg. \$14
\$10.99



Rice Water Bright Foaming Cleanser
Light whipped foam. With rice water and soapwort extract. Skin looks clear and bright. 10.1 fl. oz. **508-093** reg. \$19
\$14.99



Rice Water Bright Mild Cleansing Water
Removes impurities via the micellar method, so no need to rinse off! 16.9 fl. oz. **288-360** reg. \$17
\$13.99



Smaller Size! Rice Water Bright Foaming Cleanser
Light whipped foam. With rice water and soapwort extract. Convenient size for your medicine cabinet. 5 fl. oz. **478-479** reg. \$12
\$9.99



Rice Water Bright Light Facial Cleansing Oil
With jojoba oil and rice water extract, known to visibly brighten and moisturize skin. 5 fl. oz. **720-199** reg. \$20
\$15.99



Rice Water Bright Cleansing Facial Wipes
Great on the go. With rice extract to moisturize while cleansing. Removes eye makeup. 50 sheets. **508-108** reg. \$13
\$9.99



Rice Water Bright Facial Massage Cream
With rice water, vitamins A, B and E, ceramide and minerals. After cleansing, massage into skin 2-3 times a week. 6.7 fl. oz. **450-200** reg. \$25
\$19.99



Calendula Essential Moisture
Daily skin care for irritated and sensitive skin. With moisturizing calendula extract, a soothing herb complex, and the ultimate hydrator, hyaluronic acid.

A. Serum
A moisturizing and soothing serum that helps calm skin and enhance hydration. 1.35 fl. oz. **980-533** reg. \$15
\$11.99

B. Eye Cream
A lightweight, non-greasy, moisturizing and soothing eye cream. .67 fl. oz. **409-823** reg. \$14
\$10.99

C. Cream
A moisturizing cream that instantly hydrates while it gently helps soothe dry, itchy, irritated skin. 1.69 fl. oz. **250-462** reg. \$15
\$11.99



The Face Shop Smile Foot Exfoliating Cream
A unique 2-in-1 daily foot exfoliating cream that removes dead skin cells as it soothes skin. With naturally moisturizing urea, which leaves feet feeling soft and hydrated. 4 fl. oz. **535-426** reg. \$15
\$11.99



The Face Shop Smile Foot Mask
Disposable foot mask, with naturally moisturizing urea, shea butter and collagen, for baby-soft feet! Refreshes with peppermint oil. Contains two masks, one for each foot. **535-957** reg. \$5
\$3.99

Avon Solutions Banishing Serum
An intensive serum with ingredients known to help improve the appearance of dark spots and uneven skin tone. 1 fl. oz. 507-905 reg. \$16
\$12.99

Avon Solutions Dramatic Firming Serum
This moisturizing serum contains effective anti-aging ingredients that help promote a more youthful appearance. 1 fl. oz. 507-871 reg. \$16
\$12.99

Avon Solutions Nurtura Serum
With skin-nourishing ingredients known to help combat dryness and flakiness, and help hydrate. 1 fl. oz. 507-924 reg. \$16
\$12.99



Solutions Dramatic Firming Cream
Skin looks and feels smoother. 1.7 fl. oz. 374-657 reg. \$14
\$9.99



Solutions Nurtura Replenishing Cream
Adds moisture to dry skin. 1.7 fl. oz. 908-263 reg. \$14
\$9.99



Solutions Banishing Cream
Skin Discoloration Improver
Visibly improves skin tone. 1.7 fl. oz. 267-115 reg. \$14
\$9.99



Solutions Anti-Aging Cream
Moisturizing formula works to visibly smooth the appearance of fine lines and wrinkles. 1.7 fl. oz. 949-460 reg. \$14
\$9.99

FACE AND EYES SET

Anew Ultimate Supreme Advanced Performance Crème
1.7 oz. net wt.

Isa Knox Anew Clinical Collagen Booster Eye Lift Pro Dual Eye System
Gel, .33 fl. oz.
Cream, .33 fl. oz.

Rice Water Bright Foaming Cleanser
10.1 fl. oz.

3-PIECE SET
\$42.99
\$119 VALUE
685-344



CLEANSE AND TREAT SET #1

Isa Knox Anew Clinical Revitalize & Reveal Extra Strength Retexturizing Peel
30 pads.

Isa Knox Anew Clinical Revitalize & Reveal Advanced Wrinkle Corrector
1.7 fl. oz.

Rice Water Bright Mild Cleansing Water
16.9 fl. oz.

3-PIECE SET
\$39.99
\$97 VALUE
685-234



GOTTA GLOW SET

Anew Vitamin C Nourishing Body Butter
7.8 fl. oz.

Anew Vitamin C Glow Body Scrub
9 oz. net wt.

Isa Knox Anew Clinical Revitalize & Reveal Resurfacing Lotion for Body
5 fl. oz.

3-PIECE SET
\$40.99
\$102 VALUE
685-488



CLEANSE AND TREAT SET #2

Isa Knox Anew Clinical Line Eraser with Retinol Treatment
1 oz. net wt.

Isa Knox Anew Clinical Revitalize & Reveal Resurfacing Expert Smoothing Fluid
1 fl. oz.

Isa Knox LXNEW Clean Nourishing Cream Cleanser
5 fl. oz.

3-PIECE SET
\$44.99
\$103 VALUE
685-420



street fair season!

Whether it's the ice cream man or the famed booze bus, enjoy delicious scents that bring you to the front of the line of your favorite food truck!



soft floral

LYRD Peony Rosé Eau de Parfum
Peony petals, pink currant and sheer musk. 1.7 fl. oz. **616-210** reg. \$24

\$20

free with any \$35 fragrance purchase, pages 42-55. \$24 value. Limited quantities.



NEW

LIMITED EDITION

❖ **LYRD Candle**

Gives 30 hours of burn time. 7 oz. 3 1/8" diam. x 3 1/2" H. Glass jar, paper dust cover, soy-blend wax. Assembled in USA. reg. \$24

\$18.99 each

❖ **LYRD Zesty Bestie Candle**

Indulge in the slurpable pleasure of a frozen cocktail with notes of salted grapefruit, orange and apricot.

818-459

❖ **LYRD Coco Mochi Swirl Candle**

Delight in a pandan-inspired treat with notes of matcha, coconut milk and vanilla ice cream.

818-501

❖ **LYRD Gimme S'more! Candle**

Gather round the campfire for this ooey gooey goodness with notes of graham cracker, milk chocolate and toasted marshmallow.

819-163

Candle not intended to heat or cook food. Never leave burning candles unattended. Keep away from children and pets.



fruity floral
Live Out Loud
Eau de Parfum
 Strawberry, mimosa and vanilla.
 1.7 fl. oz. 142-000 reg. \$40
\$26.49



fruity floral
Live Out Loud #4U
Eau de Parfum
 Mandarin, peach blossom and vanilla.
 1.7 fl. oz. 735-968 reg. \$40
\$26.49

love begins with you



soft floral
Today Eau de Parfum
 Magnolia blossoms, hibiscus petals
 and silk musk. 1.7 fl. oz. 325-920 reg. \$30
\$26.49



woody floral
LYRD Oud Rose
Eau de Parfum
 Saffron, rose and patchouli.
 1.7 fl. oz. 954-412
 reg. \$38
\$32



soft floral
LYRD Honeysuckle Blossom
Eau de Parfum
 Apple blossom, honeysuckle nectar and
 vanilla orchid. 1.7 fl. oz. 616-282 reg. \$24
\$20



soft floral
LYRD Peony Rosé
Eau de Parfum
 Peony petals, pink currant and
 sheer musk. 1.7 fl. oz. 616-210 reg. \$24
\$20



NEW
LIMITED EDITION
 fruity floral
Far Away Escape Eau de Parfum
 Anjou pear, gardenia flower and cashmere wood. 1.7 fl. oz. 473-993
 reg. \$25
\$18.99



amber floral
Far Away Gold Eau de Parfum
 Ylang-ylang, jasmine and vanilla. 1.7 fl. oz.
 685-727 reg. \$25
\$18.99



Far Away Hand Cream
 2.5 fl. oz.
 364-850
 reg. \$7
\$4.99




Far Away Body Scrub & Wash
 6.7 fl. oz.
 143-360
 reg. \$12
\$9.99



amber floral
Far Away Eau de Parfum
 Freesia, jasmine and amber. 1.7 fl. oz.
 685-712 reg. \$25
\$18.99



fruity floral
Far Away Infinity Eau de Parfum
 Bergamot, jasmine sambac and sandalwood. 1.7 fl. oz. 318-481
 reg. \$25
\$18.99



fruity floral
Far Away Bali Eau de Parfum
 Grapefruit, salted tuberose and amber. 1.7 fl. oz. 451-389 reg. \$25
\$18.99



Far Away Hair and Body Mist
 3.25 fl. oz.
 572-536
 reg. \$16
\$11.99



Far Away Body Lotion
 6.7 fl. oz.
 082-881
 reg. \$10
\$6.99



illuminate your life

**BACK BY
POPULAR DEMAND!**

woody floral

**Haiku Sunrise
Eau de Parfum**
Coconut water,
rhubarb and
cedarwood. 1.7 fl. oz.
091-500 reg. \$25
\$18.99



fresh green floral
**Haiku Kyoto Flower
Eau de Parfum**
Violet leaf, white peony
and cotton musk.
1.7 fl. oz.
144-352 reg. \$25
\$18.99



fresh green
floral
**Haiku Reflection
Eau de Parfum**
Water accord,
acacia blossom
and amber wood.
1.7 fl. oz.
617-657 reg. \$25
\$18.99



fresh green floral
Haiku Eau de Parfum
Yuzu, muguet and blonde woods.
1.7 fl. oz. 601-030 reg. \$25
\$18.99



**Haiku
Hair and
Body Mist**
3.25 fl. oz.
572-574
reg. \$16
\$11.99



**Haiku
Hand Cream**
2.5 fl. oz.
364-808
reg. \$7
\$4.99



**Haiku
Body Scrub
& Wash**
6.7 fl. oz.
143-208
reg. \$12
\$9.99



**Haiku
Body Lotion**
6.7 fl. oz.
447-820
reg. \$10
\$6.99



amber floral

Rare Gold Eau de Parfum
Mandarin zest, ylang-ylang and amber.
1.7 fl. oz. 933-115 reg. \$25
\$18.99



fruity floral

Rare Amethyst Eau de Parfum
Plum, violet and sandalwood.
1.7 fl. oz. 933-062 reg. \$25
\$18.99



woody floral

Imari Amor Eau de Parfum
Black currant, orris and musk.
1.7 fl. oz. 762-573 reg. \$25
\$18.99



amber floral

Imari Seduction Eau de Toilette
Wild berries, purple orchid and patchouli.
1.7 fl. oz. 452-897 reg. \$25
\$18.99

luminous luxuries

soft floral
Rare Pearls Eau de Parfum
Magnolia, white pepper and rosewood.
1.7 fl. oz. 761-615 reg. \$25
\$18.99



Rare Pearls Hand Cream
2.5 fl. oz. 364-827
reg. \$7
\$4.99



Rare Pearls Hair and Body Mist
3.25 fl. oz. 572-851
reg. \$16
\$11.99



Rare Pearls Body Lotion
6.7 fl. oz. 082-915
reg. \$10
\$6.99



amber floral
Candid Cologne
 Bergamot, tuberose
 and patchouli.
 1.7 fl. oz.
 038-295
 reg. \$18
\$13.49



soft floral
Dreamlife Cologne
 Mimosa flower,
 rose and amber.
 1.7 fl. oz.
 236-227
 reg. \$18
\$13.49



woody floral
Night Magic Cologne
 Neroli, jasmine
 and musk.
 1.7 fl. oz.
 168-682
 reg. \$18
\$13.49



soft floral
Odyssey Cologne
 Tuberose,
 ylang-ylang and
 oakmoss. 1.7 fl. oz.
 168-697
 reg. \$18
\$13.49



soft floral
**Sweet Honesty
 Cologne**
 Lily of the valley, rose
 and cedarwood.
 1.7 fl. oz.
 037-595
 reg. \$18
\$13.49



soft floral
Timeless Cologne
 Cardamom,
 jasmine and
 patchouli.
 1.7 fl. oz.
 037-930
 reg. \$18
\$13.49



soft floral
Topaze Cologne
 Jasmine, rose and
 sheer musk.
 1.7 fl. oz.
 735-217
 reg. \$18
\$13.49



fresh green floral
Free O₂ Eau de Toilette
 White peach tea,
 honeysuckle and musk.
 1.7 fl. oz.
 265-658
 reg. \$18
\$13.49



scented softness

**Perfumed
Skin Softener**
 Moisturizing formula leaves
 skin soft and scented.
 Each, 5 fl. oz.
 reg. \$8
\$3.99 each



Candid 103-926



Night Magic Evening Musk 862-112



Odyssey 862-108



Sweet Honesty 473-936



Timeless 104-478



Far Away 812-981



Haiku 813-973



Imari 818-239

the call of the wild



fresh aromatic
Wild Country Cologne
Lavender, coriander seed
and sandalwood.
3 fl. oz. 086-466 reg. \$22
\$14.99



**Wild Country
Aftershave Splash**
4 fl. oz. 366-432
reg. \$13
\$10.49



**Wild Country
Hair & Body Wash**
5 fl. oz. 215-188
reg. \$8
\$3.99



**Wild Country
Bar Soap**
3.17 oz. net wt. 495-570
reg. \$6
\$3.99



fresh aromatic
**Black Suede
Eau de Toilette**
Bergamot, leather
and oakmoss.
3.4 fl. oz. 908-703
reg. \$22
\$14.99



**Black Suede
Hair &
Body Wash**
5 fl. oz.
230-200
reg. \$8
\$3.99



**Black Suede
Bar Soap**
3.17 oz. net wt.
495-565
reg. \$6
\$3.99



fresh aromatic
Perceive Cologne
Citrus, sage and
cedarwood.
3.4 fl. oz. 194-550
reg. \$25
\$18.99



fresh aromatic
Mesmerize Cologne
Bergamot,
cardamom and
amber. 3.4 fl. oz.
871-458 reg. \$25
\$18.99



woody fougère
**Mesmerize Black
Eau de Toilette**
Pepper, nutmeg
and tonka bean.
3.4 fl. oz. 305-667
reg. \$25
\$18.99



woody fougère
**Studio 1886
Gentleman
Eau de Toilette**
Geranium, black
pepper and
cedarwood.
1.7 fl. oz. 708-750
reg. \$50
\$39



**Studio 1886
Gentleman
Aftershave
Lotion**
6.7 fl. oz.
708-927
reg. \$16
\$12.99

HAIKU HAND & BODY SET

fresh green floral

Eau de Parfum
Yuzu, muguet and
blonde woods.
1.7 fl. oz.**Body Lotion**
6.7 fl. oz.**Hand Cream**
2.5 fl. oz.**3-PIECE SET****\$20.99****\$42 VALUE**

816-920

**BLACK SUEDE HAIR & BODY SET**

fresh aromatic

Eau de Toilette
Bergamot, leather
and oakmoss.
3.4 fl. oz.**Hair & Body Wash**
5 fl. oz.**Bar Soap**
3.17 oz. net wt.**3-PIECE SET****\$15.99****\$36 VALUE**

816-972

**RARE PEARLS HAIR & BODY SET**

soft floral

Eau de Parfum
Magnolia, white pepper
and rosewood. 1.7 fl. oz.**Body Lotion**
6.7 fl. oz.**Hair and Body Mist**
3.25 fl. oz.**3-PIECE SET****\$25.99****\$51 VALUE**

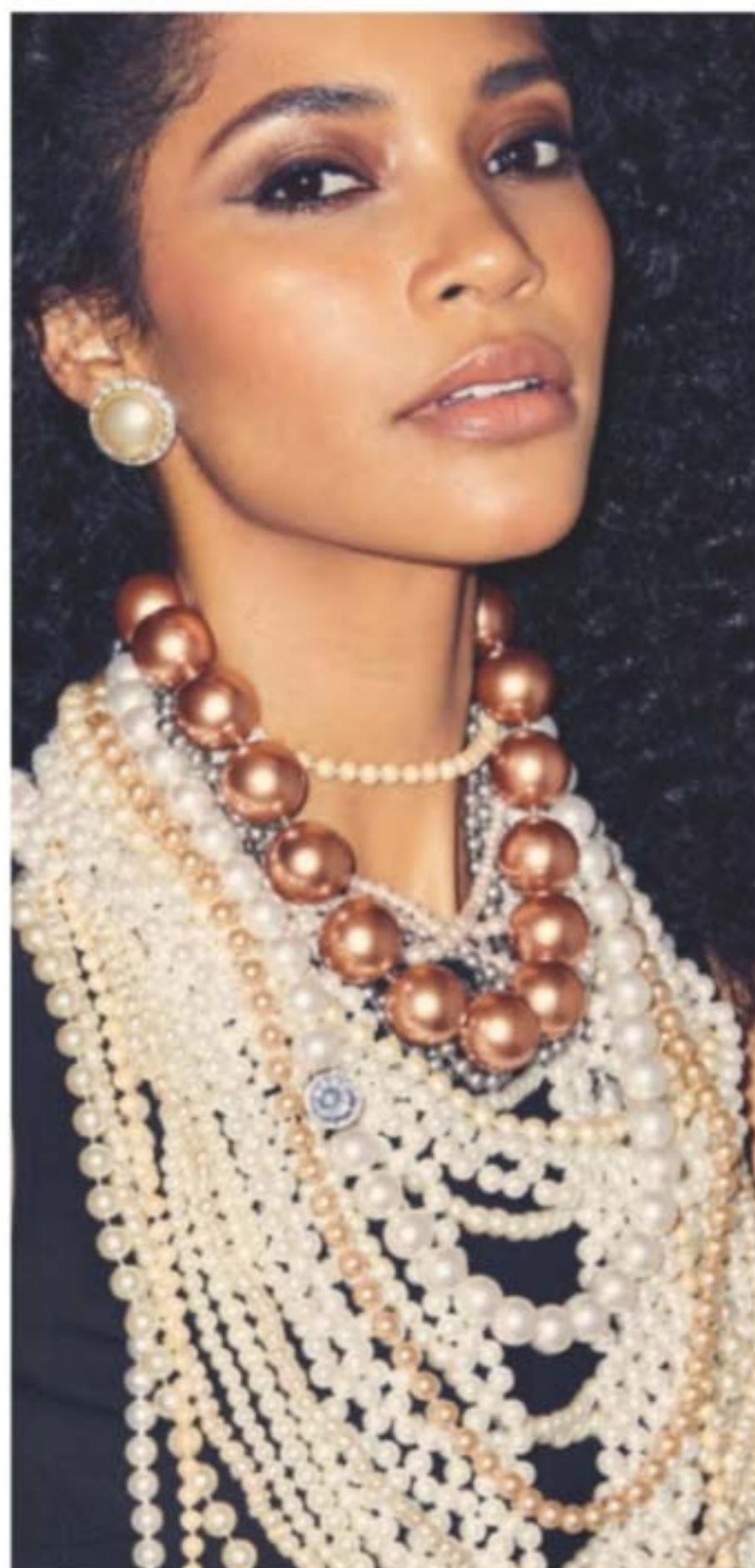
816-991

**WILD COUNTRY HAIR & BODY SET**

fresh aromatic

Cologne
Lavender, coriander seed
and sandalwood.
3 fl. oz.**Hair & Body Wash**
5 fl. oz.**Bar Soap**
3.17 oz. net wt.**3-PIECE SET****\$15.99****\$36 VALUE**

816-437





vegan formula
made from olive oil

Organist

everyday beauty
inspired by nature

Organist Botanical Castile Soap

Daily vegan washes for your face and body. Infused with soap made from olive oil and formulated without parabens, silicone oil or sulfates. Leaves skin feeling refreshed, revitalized and luxuriously moisturized while it cleanses.

AVON Senses GRATTUR Lavender & Cedar

free

AVON SENSES GRATITUDE LAVENDER & CEDARWOOD SHOWER STEAMERS WITH ANY \$30 PURCHASE, PAGES 59-83. \$26 VALUE. LIMITED QUANTITIES. Sold separately on page 60.



for face and body

FOR OILY SKIN Tea Tree & AHA BHA

Controls oil as it deeply cleanses and refreshes. Fresh herbal scent. 16.2 fl. oz. 348-115 reg. \$13 **\$10.99**



revitalize

AVON ORGANIST Botanical Castile Soap Savon de Castille botanique

TEA TREE & AHA BHA ARBRE À THÉ AVEC AHA ET BHA

OUR BODY WASH WON'T FEELING CLEAN SAY GOODBYE TO A BATHING EXPERIENCE NOTRE LAVAGE VOTRE PEAU DITES ADIEU À LA SÈCHE ET DITES BONJOUR À UNE EXPÉRIENCE DE BAIN

WILL LEAVE YOUR SKIN FEELING CLEAN AND SOOTHED TO SAY HELLO TO A BATHING EXPERIENCE POUR LE CORPS PROPRE ET HYDRATÉ ET DITES BONJOUR À UNE RAFFRAÎCHISANTE

Skin Type Type de peau Dry Skin Peau grasse

Features Caractéristiques Clean Purge Revitalizing Raffermissant Refreshing Rafraîchissant

Scent Parfum Fresh Herbal Herbes fraîches Woody Boisé Spicy Épicé

16.2 FL. OZ. / 16.2 FL. OZ. U.S.

FOR DRY SKIN Rose Water & Hyaluronic Acid

Low-pH formula helps replenish soothing moisture. Crisp floral scent. 16.2 fl. oz. 348-100 reg. \$13 **\$10.99**

moisturize

AVON ORGANIST Botanical Castile Soap Savon de Castille botanique

ROSE WATER & HYALURONIC ACID EAU DE ROSE ET ACIDE HYALURONIQUE

OUR BODY WASH WON'T FEELING CLEAN SAY GOODBYE TO A BATHING EXPERIENCE NOTRE LAVAGE VOTRE PEAU DITES ADIEU À LA SÈCHE ET DITES BONJOUR À UNE EXPÉRIENCE DE BAIN

WILL LEAVE YOUR SKIN FEELING CLEAN AND SOOTHED TO SAY HELLO TO A BATHING EXPERIENCE POUR LE CORPS PROPRE ET HYDRATÉ ET DITES BONJOUR À UNE RAFFRAÎCHISANTE

Skin Type Type de peau Dry Skin Peau sèche

Features Caractéristiques Moisturizing Rafraîchissant Soothing Apaisant



Senses Cozy Vanilla & Coconut Body Scrub
With shea butter.
9 oz. net wt.
530-314
reg. \$23
\$18.99




Senses Cozy Vanilla & Coconut Shower Gel
Moisturizing cleanser.
10 fl. oz.
200-227
reg. \$17
\$13.99



Senses Cozy Vanilla & Coconut Body Lotion
With shea butter and vitamin E.
8 fl. oz.
200-208
reg. \$18
\$14.99



Senses Cozy Vanilla & Coconut Hand Soap
With moisturizing glycerin.
10.1 fl. oz.
178-675
reg. \$13.99
\$10.99



Senses Cozy Vanilla & Coconut Body Mist
With refreshing aloe vera extract.
8 fl. oz.
034-888
reg. \$18
\$14.99



Senses Cozy Vanilla & Coconut Hand Cream
With shea butter and antioxidants.
2.5 fl. oz.
015-029
reg. \$7
\$5.99



Senses Sparkling Grapefruit & Orange Blossom
Energize with a juicy mix of zesty grapefruit, bright orange blossom and delicate honeysuckle.



Senses Gratitude Lavender & Cedarwood Room Spray
3.25 fl. oz.
361-851
reg. \$13
\$10.99

◆ **Senses Gratitude Lavender & Cedarwood Candle**
3½" H x 3" diam.
7 oz. net wt.
504-686
reg. \$24
\$19.99

Senses Gratitude Lavender & Cedarwood Shower Steamers
Each, 1 oz. net wt.
504-428
reg. \$26
\$20.99 set of 6

Senses Gratitude Lavender & Cedarwood Bath Salts
12.5 oz. net wt.
504-557
reg. \$23
\$18.99

Senses Gratitude Lavender & Cedarwood Air Diffuser
Six diffuser reeds.
Fragrance oil, 2.37 fl. oz.
504-724
reg. \$30
\$24.99

Hand Cream
With shea butter and antioxidants.
2.5 fl. oz. 852-120
reg. \$7
\$5.99

Hand Soap
With moisturizing glycerin.
10.1 fl. oz. 415-127
reg. \$13.99
\$10.99

Body Mist
With refreshing aloe vera extract.
8 fl. oz. 034-687
reg. \$18
\$14.99

Shower Gel
Moisturizing cleanser derived from coconut.
10 fl. oz. 367-204
reg. \$17
\$13.99

Body Lotion
With shea butter and vitamin E.
8 fl. oz. 367-219
reg. \$18
\$14.99



Exfoliation Mitt
439-734 reg. \$12
\$9.99



**Moisture Therapy Intensive
Healing & Repair Hand Cream**
4.2 fl. oz. 482-937 reg. \$7
\$5.99



Avon Shower Brush
904-727 reg. \$10
\$7.99



**Senses Shower Gel
Blushing Cherry Blossom**
5 fl. oz. 423-299 reg. \$6
\$4.99



**Avon Care Silicone Glove
Protective Hand Cream**
3.4 fl. oz. 366-887 reg. \$7
\$5.99



**Senses Shower Gel
Juicy Pomegranate & Mango**
5 fl. oz. 248-155 reg. \$6
\$4.99



**Senses Shower Gel
Fresh Cucumber & Melon**
5 fl. oz. 462-071 reg. \$6
\$4.99



**Senses Shower Gel
Silky Vanilla**
5 fl. oz. 248-140 reg. \$6
\$4.99



**Avon Aromatherapy
Body Lotion Bright Day Ahead**
5.8 fl. oz. 584-670 reg. \$17
\$13.99



**Avon Aromatherapy
Body Lotion Bye-Bye Stress**
5.8 fl. oz. 584-684 reg. \$17
\$13.99



**Avon Aromatherapy
Body Lotion Sleep Tight Zzz**
5.8 fl. oz. 584-866 reg. \$17
\$13.99



soak away stress

Senses Bubble Bath
Each, 24 fl. oz. reg. \$14
\$11.99 each



Vanilla Cream
875-669



Sensitive Skin
213-151



Cherry Blossom
425-033



Cucumber Melon
688-950



Orange & Honeysuckle
633-952



Endless Ocean
425-048



Lily & Honeysuckle Blossom
423-394



Lavender Garden
097-986



Soft Pink
425-052



**Veilment Glacial Water
Cooling Body Scrub & Cleanser**
13.5 fl. oz. 735-399 reg. \$17
\$13.99



**Veilment Dead Sea Salt
Body Scrub & Cleanser**
13.5 fl. oz. 707-988 reg. \$17
\$13.99



**Veilment Himalaya Pink Salt
Body Scrub & Cleanser**
13.5 fl. oz. 708-252 reg. \$17
\$13.99



**Veilment Black Rose
Body Scrub & Cleanser**
13.5 fl. oz. 707-969 reg. \$17
\$13.99



**Veilment CBD Soothing
& Nourishing Body Cream**
1.7 fl. oz. 524-509
reg. \$33
\$28



**Veilment CBD Nourishing
Body Cream (Tube)**
6.7 fl. oz. 254-229
reg. \$38
\$33



Veilment Lumière Sunless Tanning Serum
Each, 1.01 fl. oz.
Light/Medium 422-307
Medium/Dark 422-326
reg. \$24
\$19.99 each



**Veilment Himalaya
Pink Salt Exfoliating Soap**
5.3 oz. net wt. 260-440
reg. \$8
\$6



Veilment CBD Dry Body Oil
3.73 fl. oz.
869-485
reg. \$37
\$30



**Veilment CBD Nourishing
Body Cream**
5 fl. oz. 524-513
reg. \$33
\$28





Original Bath Oil
Hydrates during or after bath or shower. 16.9 fl. oz. 439-040
reg. \$24
\$17.99



Original Body Lotion
48-hour moisture. 11.8 fl. oz.
761-634
reg. \$14
\$11.99



Original Replenishing Hand Cream
24+ hours of moisturization.
3.4 fl. oz. 941-268 reg. \$7
\$5.99



Original Shower Gel
Gently cleanses and hydrates.
5 fl. oz. 914-580
reg. \$8
\$4.99



Original Beauty Bar Soap
Skin-nourishing bar soap. Creamy lather. Suitable for daily use on face, body and hands.
3.17 oz. net wt. 543-110 reg. \$4.50
\$3.49



Sold separately:
Bonus-Size Skin So Soft and Moisture Therapy Body Lotion Pump
101-149
\$3



Original Bonus-Size Body Lotion
48-hour moisture. 33.8 fl. oz.
336-043
reg. \$23
\$15.99

Pump sold separately.



Original Bonus-Size Shower Gel
Gently cleanses and hydrates.
33.8 fl. oz. 433-444
reg. \$18
\$14.49

Pump sold separately.

legendary softness



Original
With jojoba oil.
Fresh herbal scent.

Original Gelled Body Oil
Dries to a silky finish.
6.76 fl. oz. 939-500
reg. \$13
\$10.99

Original Bath Oil Spray
Locks in hydration.
Pump sold separately.
5 fl. oz. 967-571
reg. \$14
\$11.99

Bath Oil Spray Pump
(Not shown.)
101-320
\$3

Original Bonus-Size Bath Oil
Hydrates during or after bath or shower. 25 fl. oz.
037-690
reg. \$30
\$24.99



Soft & Sensual Bath Oil
Hydrates during or after bath or shower. 16.9 fl. oz.
504-614 reg. \$24
\$17.99



Soft & Sensual Body Lotion
48-hour moisture. 11.8 fl. oz.
934-312 reg. \$14
\$11.99



Soft & Sensual Replenishing Hand Cream
24+ hours of moisturization. 3.4 fl. oz. 867-315 reg. \$7
\$5.99



Soft & Sensual Shower Gel
Gently cleanses and hydrates. 5 fl. oz. 435-600 reg. \$8
\$4.99



Beauty Bar Soap
Skin-nourishing bar soap. Creamy lather. Suitable for daily use on face, body and hands. 3.17 oz. net wt. 543-215 reg. \$4.50
\$3.49



Sold separately:
Bonus-Size Skin So Soft and Moisture Therapy Body Lotion Pump
101-149
\$3



Soft & Sensual Bonus-Size Body Lotion
48-hour moisture. 33.8 fl. oz. 336-062 reg. \$23
\$15.99

Pump sold separately.



Soft & Sensual Bonus-Size Shower Gel
Gently cleanses and hydrates. 33.8 fl. oz. 018-142 reg. \$18
\$14.49



sensual softness

Soft & Sensual
With argan oil.
Spicy floral scent.

Soft & Sensual Bonus-Size Bath Oil
Hydrates during or after bath or shower. 25 fl. oz. 862-920 reg. \$30
\$24.99

Soft & Sensual Gelled Body Oil
Dries to a silky finish. 6.76 fl. oz. 908-244 reg. \$13
\$10.99



good for your skin.
good for the earth.

Sustainable packaging*
Eucalyptus mint scent

**SKIN SO SOFT
PURE NATURE**

Revitalizing Shower Gel
96% naturally derived.
Richly lathering gel.
12 fl. oz. 415-170
reg. \$20
\$15.99

Revitalizing Body Cream
94% naturally derived. Smooth on
moisturizing cream after bath or
shower. 12 fl. oz. 629-767
reg. \$21
\$16.49

Revitalizing In-Shower Body Lotion
95% naturally derived.
Hydrating and softening lotion.
Apply onto wet skin after shower
or bath. 8 fl. oz. 633-857
reg. \$21
\$16.49

*Shower Gel and Body Cream
bottles: 95% post-consumer
recycled material, excluding cap.
Body Lotion tube: 55% post-
consumer recycled
material, excluding cap.



**Supreme Nourishment
Enriching Coconut Oil Wash**
With nourishing vitamin E.
11.8 fl. oz. 366-380 reg. \$15
\$12.99



**Supreme Nourishment
Enriching Coconut Oil Milk Lotion**
Leaves skin feeling silky soft.
11.8 fl. oz. 419-835 reg. \$17
\$11.99



**Radiant Moisture
Replenishing Hand Cream**
24+ hours of moisturization.
3.4 fl. oz. 892-650 reg. \$7
\$5.99



Comforting Shea Bath Oil
Hydrates during or after bath
or shower. Locks in moisture.
16.9 fl. oz. 015-071
reg. \$24
\$17.99



**Radiant Moisture
Bonus-Size Bath Oil**
Hydrates during or after bath
or shower. 25 fl. oz. 249-788
reg. \$30
\$24.99



Radiant Moisture Shower Gel
Gently cleanses and hydrates.
5 fl. oz. 410-914
reg. \$8
\$4.99



**Supreme Nourishment
Bonus-Size Body Lotion**
48 hours of moisture.
33.8 fl. oz. 337-475 reg. \$23
\$15.99
Pump sold separately (page 68).



**Radiant Moisture
Bonus-Size Body Lotion**
48 hours of moisture.
33.8 fl. oz. 337-346 reg. \$23
\$15.99
Pump sold separately (page 68).



**Radiant Moisture
Bonus-Size Shower Gel**
Gently cleanses and hydrates.
33.8 fl. oz. 433-922
reg. \$18
\$14.49



**Skin So Soft
Botanical Essence Bath Oil**
With nourishing botanical
extracts. Uplifting herbal
scent. 16.2 fl. oz. 027-253
reg. \$31
\$24.99

Acne-Prone Skin Soothing Spot Gel
 .5 fl. oz. 072-721
 reg. \$18
\$13.99

Acne-Prone Skin Foaming Cleanser
 5 fl. oz. 041-647
 reg. \$17
\$12.99



Acne-Prone Skin Soothing Gel
 6.1 fl. oz. 040-636
 reg. \$20
\$15.99

Acne-Prone Skin Body Pads
 70 pads. 039-330
 reg. \$30
\$24.99

Acne-Prone Skin Exfoliating Body Wash
 10.1 fl. oz. 041-556 reg. \$20
\$15.99

Acne-Prone Skin Gentle Body Wash
 10.1 fl. oz. 039-325
 reg. \$20
\$15.99



Moisture Therapy Bonus-Size Body Lotions
 Each, 33.8 fl. oz. reg. \$20

\$15.99 each
 Pump sold separately
 (page 68).

Intensive Healing & Repair
 72-hour moisture for extra-dry skin. Fragrance-free. **325-547**

Daily Skin Defense
 Helps restore moisture to everyday dry skin. **603-028**

Calming Relief
 Soothes and relieves dry, itchy skin. Fragrance-free. **761-620**

Sold separately
 (page 68):
Bonus-Size Skin So Soft and Moisture Therapy Body Lotion Pump
 101-149
\$3



Pumps not included.



Moisture Therapy Intensive Healing & Repair Extra Strength Cream
 24-hour moisturization. Fragrance-free. 5.3 oz. net wt. **772-972** reg. \$8
\$5.99



Moisture Therapy Balance + Soothe Body Wash
 Softens as it gently cleanses. 13.2 fl. oz. **438-078** reg. \$23
\$18



Moisture Therapy Balance + Soothe Body Lotion
 Skin looks softer and healthier. 13.2 fl. oz. **438-082** reg. \$25
\$20

bee goodness for hair

With revitalizing honey, royal jelly and propolis (tree sap plus beeswax).



Elastine PropoliThera

Volumizing

Enhances texture. Hair looks fuller, thicker, stronger. Each, 16.9 fl. oz.

- A. Shampoo 892-607
- B. Conditioner 892-870

Damage Repair

Helps hair appear smooth and manageable. Each, 16.9 fl. oz.

- C. Shampoo 053-082
- D. Conditioner 638-681

E. Hair Mask

Enriched with nutrients to help deeply nourish hair and mend damaged split ends. 10.1 fl. oz.

150-301

reg. \$19 each

\$15.99 each

F. Hair Oil Serum

Helps to strengthen, protect, moisturize and smooth hair, and to add shine. 5.7 fl. oz.

895-190

reg. \$20

\$16.99



Elastine PropoliThera Leave-In Conditioner

8.1 fl. oz. 102-570

reg. \$19

\$14.99



Elastine PropoliThera Serum Treatment

7.8 fl. oz. 359-821

reg. \$22

\$17.99



Elastine PropoliThera Hair Deep Conditioning Treatment Cap

053-761 reg. \$8

\$6.99



Elastine PropoliThera Aloe Dual-Active Hair Serum

3.4 fl. oz. 102-585 reg. \$30

\$24.99



Advance Techniques 360 Nourish with Moroccan Argan Oil Leave-In Treatment

Moisturizes dry, damaged hair. With vitamins B and E. 2 fl. oz. 511-411

reg. \$16

\$11.99



Advance Techniques Daily Shine Dry Ends Serum

Helps mend and nourish split ends instantly. With pro-vitamin B5. 2 fl. oz. 883-190

reg. \$12

\$9.99



Advance Techniques Daily Shine 2-in-1 Shampoo & Conditioner

Leaves hair feeling clean, conditioned and frizz-free. With pro-vitamin B5. 11.8 fl. oz. 358-218

reg. \$12

\$9.99



Root Touch-Up

Instantly covers up roots and bare spots. With black bean and ginseng. Built-in mirror. Each, .25 oz. net wt. reg. \$19

\$15.99 each

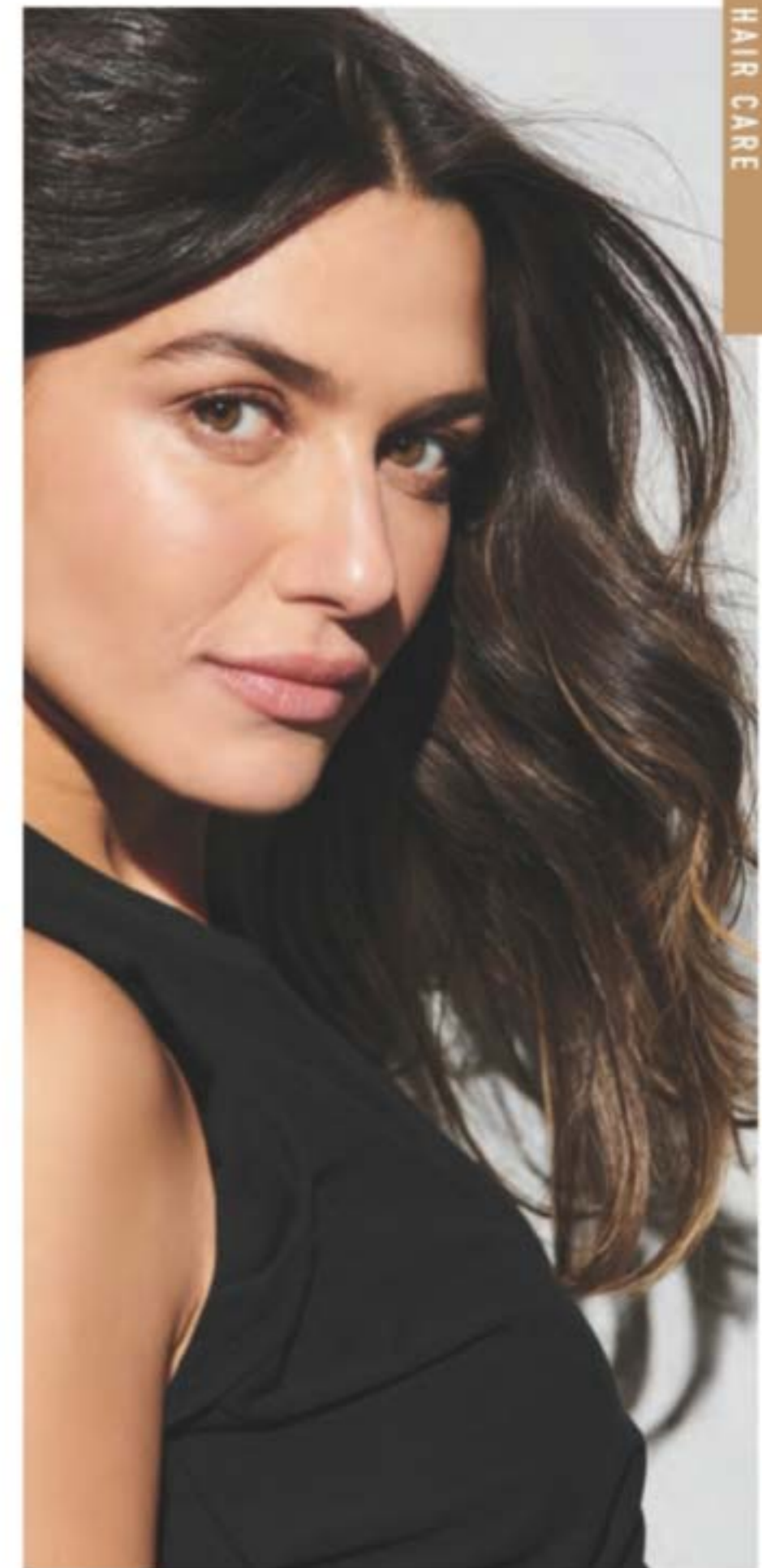


Reddish Brown 243-627

Light Brown 244-642

Dark Brown 245-213

Black 245-251



ELASTINE BOTANICALS

Infused with revitalizing babassu seed oil, chamomile flower water and lemon chestnut extract



Elastine Botanicals Rosemary & Sea Salt Volumizing Shampoo
6.7 fl. oz.
240-556
reg. \$6
\$4.99



Elastine Moisture Essentials Shine Shampoo
12.7 fl. oz.
495-125
reg. \$9
\$6.99



Elastine Botanicals Rosemary & Sea Salt Volumizing Conditioner
6.7 fl. oz.
246-831
reg. \$6
\$4.99



Elastine Moisture Essentials Shine Conditioner
12.7 fl. oz.
495-130
reg. \$9
\$6.99



Elastine Botanicals Argan & Castor Anti-Frizz Shampoo
6.7 fl. oz.
150-866
reg. \$6
\$4.99



Elastine Moisture Essentials Volume Shampoo
12.7 fl. oz.
495-106
reg. \$9
\$6.99

Elastine HempharmX Hydrating Shampoo
Sulfate-free.
13.5 fl. oz. 359-836
reg. \$24
\$20



Elastine HempharmX Hydrating Conditioner
13.5 fl. oz. 360-544
reg. \$24
\$20

HEMP FOR HAIR
With cold extracted hemp oil, which contains omega 3-6-9, known to help nourish hair and prevent breakage



Elastine Botanicals Cherry Blossom & Hyaluronic Acid Moisturizing Shampoo
6.7 fl. oz.
239-943
reg. \$6
\$4.99



Elastine Botanicals Cherry Blossom & Hyaluronic Acid Moisturizing Conditioner
6.7 fl. oz.
240-059
reg. \$6
\$4.99



Elastine Botanicals Argan & Castor Anti-Frizz Conditioner
6.7 fl. oz.
150-904
reg. \$6
\$4.99



Elastine Moisture Essentials Volume Conditioner
12.7 fl. oz.
495-110
reg. \$9
\$6.99



Elastine Salon de Color Color Vibe Purple Shampoo
8.4 fl. oz. 436-109
reg. \$18
\$14.99



Elastine Salon de Color Color Vibe Purple Conditioner
8.4 fl. oz.
436-955
reg. \$18
\$14.99



**BioSilk®
Silk Therapy®**
5.64 fl. oz.
011-349
reg. \$36
\$29.99



**Dr. Groot
Scalp Fortifying
Hair-Thickening
Shampoo**
13.5 fl. oz.
778-014
reg. \$35
\$29



**Dr. Groot Premium Scalp
Cleansing Brush**
065-776
reg. \$19
\$16



**CHI® Essentials
Replenishing
Shampoo**
12 fl. oz.
589-140
reg. \$22
\$17.99



**CHI® Essentials
Moisturizing
Conditioner**
12 fl. oz.
589-409
reg. \$22
\$17.99



**CHI® Essentials
Repairing
Serum**
6 fl. oz.
589-413
reg. \$33
\$27.59



**Dr. Groot
Scalp
Fortifying
Serum
Treatment**
6.7 fl. oz.
782-271
reg. \$35
\$29



**CHI® Essentials
Revive Keratin
+ Bonding
Restoring
Shampoo**
12 fl. oz.
451-192
reg. \$25
\$19.99



**CHI® Essentials
Revive Keratin
+ Bonding
Restoring
Conditioner**
12 fl. oz.
451-211
reg. \$25
\$19.99



**CHI® Essentials
Revive Keratin
+ Bonding
Protecting
Serum**
3 fl. oz.
451-340
reg. \$42
\$34.99



**Dr. Groot
Anti-Dandruff
Scalp Care
Shampoo**
10.1 fl. oz.
451-412
reg. \$28
\$22.99



**Dr. Groot
Anti-Dandruff
Scalp Care
2-in-1 Shampoo
and Conditioner**
10.1 fl. oz.
451-431
reg. \$28
\$22.99



**Avon
Detangling
Comb**
504-820
reg. \$7
\$5.99



**CHI®
1" Volcanic Lava
Ceramic Pro
Spin 'n' Curl**
471-527
reg. \$199
\$179



**CHI®
Advanced
Ionic Compact
Hair Dryer**
Attachments
included.
471-474
reg. \$150
\$135



**CHI®
ENVIRO 54®
Natural Hold
Hair Spray**
10 oz. net wt.
908-450
reg. \$26.50
\$21.50



**Avon
Blow-Dry
Round
Hairbrush**
504-800
reg. \$18
\$14.99



**Avon
Compact
Hairbrush**
504-743
reg. \$10
\$7.99



**Avon
Detangling
Hairbrush**
504-815
reg. \$12.99
\$9.99



make the great outdoors yours

Our DEET-free repellents protect your family without chemicals that feel harsh on skin. Bug Guard repels deer ticks that may carry and transmit Lyme disease.



Bug Guard Plus Picaridin Towelettes
Each, 9" L x 5 1/2" W, .3 fl. oz.
269-562
reg. \$16
\$12.99
pack of 8



Bug Guard Plus Picaridin Family-Size Pump Spray
8 fl. oz.
650-666
reg. \$22
\$16.99
Pump sold separately.



Sold separately:
Bug Guard Plus Family-Size Pump
for 8 fl. oz.
101-191
\$2.50



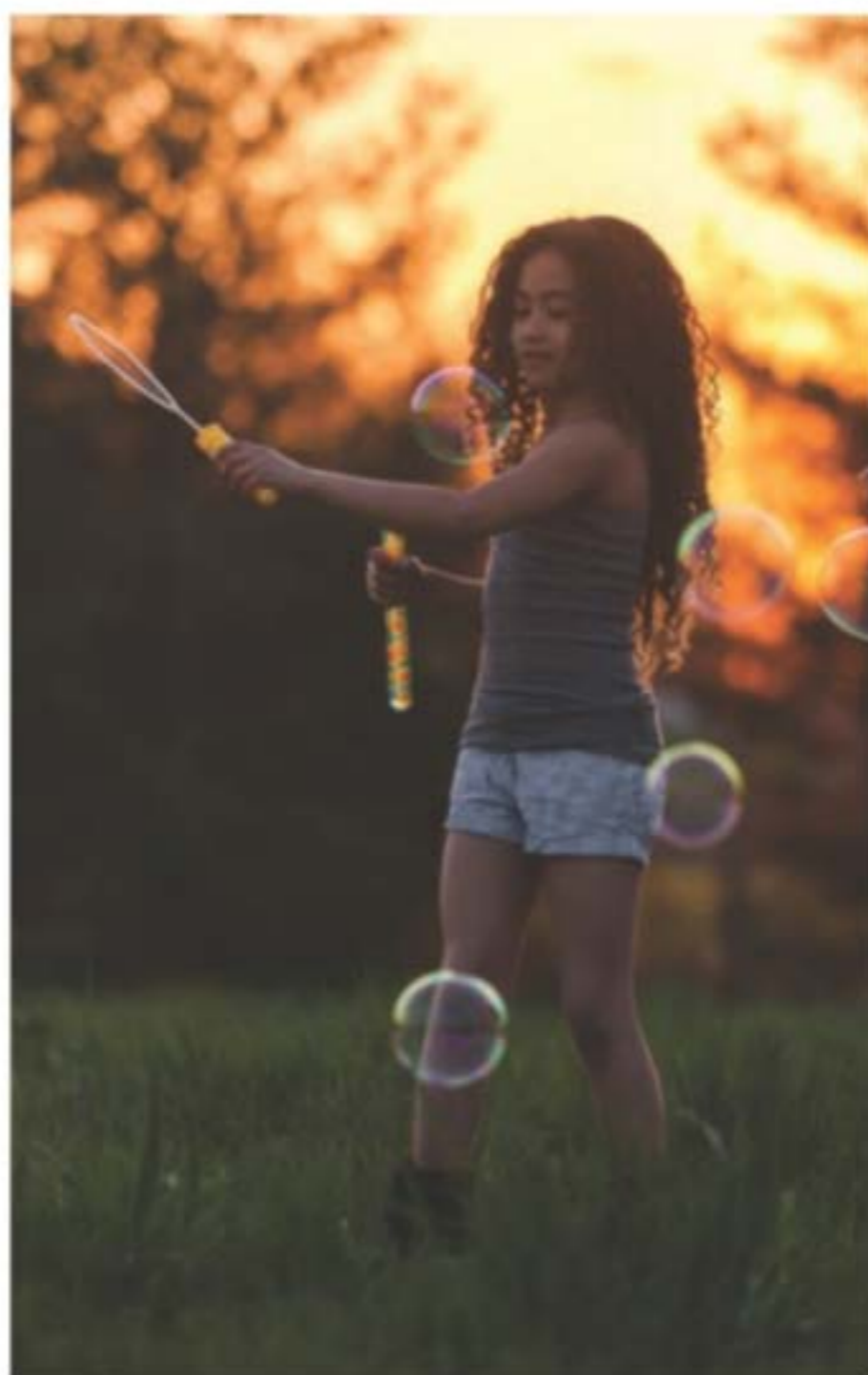
Bug Guard Plus Picaridin Aerosol Spray
4 oz. net wt.
315-243
reg. \$20
\$15.99



Bug Guard Plus Picaridin Pump Spray
4 fl. oz.
324-335
reg. \$15
\$10.99
Pump sold separately.



Sold separately:
Bug Guard Plus Pump
for 4 fl. oz.
101-225
\$2.25



Sold separately:
Bug Guard Anti-Itch Spray Pump
for 2 fl. oz.
101-168
\$2



Bug Guard Anti-Itch Spray
2 fl. oz.
972-031
reg. \$11
\$8.99
Pump sold separately.

all-in-one protection from **SUN+BUGS**

Bug Guard Plus IR3535® Expedition Aerosol Spray SPF 28
Repels mosquitoes that may transmit West Nile virus for 8 hours. Repels deer ticks for 12 hours.
4 oz. net wt.
521-370
reg. \$20
\$15.99





Foot Works Intensive Callus Cream
3.4 fl. oz.
851-310
reg. \$11
\$8.99



Foot Works Maximum Strength Cracked Heel Cream
2.5 fl. oz.
310-404
reg. \$11
\$8.99



Foot Works Deodorizing Spray
Can also be used in footwear.
3.5 oz. net wt.
313-236
reg. \$13
\$10.99



Foot Works Overnight Renewing Cream
With jojoba oil. 3.4 fl. oz.
324-225
reg. \$11
\$8.99



Foot Works Deep Moisturizing Cream
24-hour moisturization. With cocoa butter.
2.5 fl. oz.
308-962
reg. \$11
\$8.99



Foot Works Intensive Moisture Foot Cream
Suitable for diabetics.
2.5 fl. oz.
302-012
reg. \$11
\$8.99



Foot Works Arthritis Achy Foot and Muscle Cream
Contains glucosamine and chondroitin.
2.5 fl. oz.
208-400
reg. \$11
\$8.99

- 4 in 1:
- Pumice
 - Metal file
 - Fine-grain file
 - Brush

Foot Works Pedicure Tool
592-712
reg. \$11
\$8.99



- Kit includes:
- Nail clipper
 - Toenail clipper
 - Scissors
 - Small nail file
 - Cuticle pusher

Foot Works Pedicure Kit
Case, 3½" L x 4¾" W.
121-029
reg. \$12
\$9.99



Roll-On Anti-Perspirant Deodorant
Each, 2.6 fl. oz.
reg. \$4.50
\$3.49 each



On Duty Sport
875-726



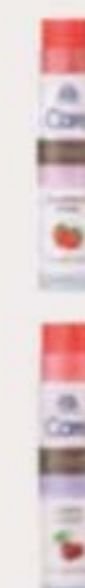
Perfumed Liquid Deodorant
2 fl. oz.
687-681
reg. \$7
\$5.99



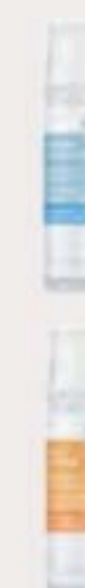
Avon Microbiome by REACH® Hygiene Deodorant Stick
2.65 oz. net wt.
524-528
reg. \$16
\$12.99



Skin So Soft Supreme Nourishment Tropical Coconut Lip Balm
.14 oz. net wt.
958-370
reg. \$2
\$1.59



Veilment Care Lip Balm
Strawberry
602-720
Cherry
604-168
Each, .14 oz. net wt.
reg. \$2
\$1.59 each



Moisture Therapy Intensive Healing & Repair Moisturizing Lip Treatment Balm
285-117
Daily Defense
946-729
Each, .14 oz. net wt. reg. \$2
\$1.59 each



CHI® Essentials Revive Keratin + Bonding Restoring Shampoo & Restoring Conditioner
 Each, 12 fl. oz.
\$50 total value
Both for \$27.99
 811-177



Elastine Salon de Color Color Vibe Purple Shampoo & Purple Conditioner
 Each, 8.4 fl. oz.
\$36 total value
Both for \$19.99
 811-200



Elastine HempharmX Hydrating Shampoo & Hydrating Conditioner
 Each, 12 fl. oz.
\$48 total value
Both for \$27.99
 811-124



Dr. Groot Scalp Fortifying Hair-Thickening Shampoo
 13.5 fl. oz.
Premium Scalp Cleansing Brush
\$54 total value
Both for \$33.99
 811-105



SKIN SO SOFT ORIGINAL SET

Original Beauty Bar Soap
 3.17 oz. net wt.

Original Gelled Body Oil
 6.76 fl. oz.

Original Bonus-Size Bath Oil
 25 fl. oz.

3-PIECE SET

\$23.99

OVER \$47 VALUE

809-185



SKIN SO SOFT RADIANT MOISTURE SET

Radiant Moisture Shower Gel
 5 fl. oz.

Radiant Moisture Replenishing Hand Cream
 3.4 fl. oz.

Radiant Moisture Bonus-Size Bath Oil
 25 fl. oz.

3-PIECE SET

\$20.99

\$45 VALUE

910-767



Shown: Toffee.



wirefree comfort

◆ **Playtex® 18 Hour® Original Comfort Strap® Wirefree Bra (4693)***
 Back closure. Natural latex rubber/polyester/nylon/cotton.
White, Natural Beige or Toffee: 36-48B,C; 34-48D,DD; 38-48DDD.
Zen Blue: 36-42B; 36-44C,D; 38-46DD,DDD.
Sailor Blue: 36-44C,D; 38-46DD; 44-46DDD.
Black: 36-48B; 36-54C; 36-50D, 54D; 38-54DD.
 reg. \$39
\$33.99



Shown: Black.



◆ **Bali® Satin Tracings® Minimizer Underwire Bra (3562)***
 Back closure. Polyester/nylon/spandex.
White: 34-48C,D,DD,DDD.
Black: 34-42C,D,DD,DDD.
 reg. \$48
\$40.99



Shown: Almond.



◆ **Bali® Comfort Revolution® Soft Touch Ultimate® Wirefree Bra (DF3462)***
 Back closure. Nylon/spandex.
 Sizes: S,M,L,XL,2XL,3XL (all colors).
 reg. \$48
\$40.99



Shown: Taupe.



◆ **Playtex® Front Close® No Poke Dreamwire™ Bra (US4423)***
 Front closure. Nylon/spandex/polyester.
 Sizes: 38-48C,D,DD,DDD (all colors).
 reg. \$46
\$39.99



Shown: Sandshell.



◆ **Playtex® Ultra Soft No Poke Dreamwire™ Bra (US4833)***
 Back closure. Nylon/spandex.
 Sizes: 38-42B; 38-44C; 38-46D,DD; 38-44DDD (all colors).
 reg. \$46
\$39.99



Shown: Brief Taupe.



◆ **Bali® Beautifully Confident with Leak Protection Liner***
 Light leak protection liner in crotch.
 Body and lace: polyester/spandex. Crotch lining: polyester. reg. \$15
\$12.99 each



Brief (DFLLB1)
 Sizes: M, L, XL, 2XL (all colors).
 Taupe Purple Black

Shown: Hi-Cut Taupe.



Hi-Cut (DFLLH1)
 Sizes: M, L, XL, 2XL (all colors).
 Taupe Purple Black



4-PACK



NEW

◆ **4-Pack Lace Pocket Tees**

Includes light green, yellow, aqua and red tees with matching lace chest-pocket detail and short sleeves, in an updated silhouette with side slits. Cotton/polyester.

Center back length: 23½" on M; 25½" on 1X. Machine wash, dry flat. Imported.

XS(0-2) 807-269	M(8-10) 807-565	XL(16) 808-557	2X(22W-24W) 808-576
S(4-6) 807-330	L(12-14) 808-490	1X(18W-20W) 808-561	3X(26W-28W) 808-595

reg. \$49.99

\$39.99 the pack



bracelet, necklace and earring set

NEW

Woven Beaded 3-Piece Set

Coral acrylic accents mixed with wood and multicolor beads. 32" L with 3½" extender. Lobster closure.

Pierced drops, 2" L.

Stretch bracelet, one size fits most.

811-894

reg. \$32.99

\$24.99 the set

light & bright

We're saying, "yes, please" to vibrant tees, jewelry in shades of coral and aqua, and flip-flops in fresh pastels. It's summer...and color is calling!

cue up the cool colors

Fun accents to give your summer wardrobe a pop.



ALL NEW

Layered Turquoise-Colored Seed Bead Necklace

Goldtone chain with turquoise-colored seed beads and goldtone bead accents. Longest layer, 20" L; shortest layer, 16 1/2" L with 3 1/2" extender.

813-844
reg. \$19.99

\$14.99

Beaded Tropical Hoop Earrings

Colored beads set in goldtone. 2" L. Pierced.

Ivory-colored 813-457
Orange 813-419

Turquoise-colored 813-476

reg. \$16.99

\$12.99 each

sets for summer!

NEW

◆ **2-Piece Ribbed Short Set**
Variegated rib-knit set. Top with round neckline and short sleeves. Pull-on shorts with elastic waistband. Polyester/rayon/spandex. Center back length: 23 1/4" on M; 26 1/4" on 1X. Inseam: 5" on M; 7" on 1X. Machine wash, dry flat. Imported.

XS(0-2) 808-710	XL(16) 808-777
S(4-6) 808-724	1X(18W-20W) 808-834
M(8-10) 808-739	2X(22W-24W) 808-925
L(12-14) 808-762	3X(26W-28W) 809-037

reg. \$46.99

\$36.99 the set

NEW

◆ **2-Pack Flip-Flops**
Includes light blue and magenta classic flip-flops with pearlized straps. Man-made materials. Imported.

S(5-6) 806-540
M(7-8) 806-573
L(9-10) 807-110
XL(11-12) 807-125

reg. \$12.99

\$9.99 the pack



WITH PRETTY PEARLIZED STRAPS
for a hint of glimmer

2-PIECE SET

RIB-KNIT texture is comfy and flattering



flow & flutter

Top things off with something chic and breezy.

NEW

◆ Double Flutter Cold-Shoulder Top

Black mixed media top with woven front, knit back, round neckline, double-layer flutter sleeves with cold shoulder detail and side slits. Body: rayon/polyester. Contrast: polyester/rayon/spandex.

Center back length: 21" on M; 23" on 1X. Machine wash, dry flat. Imported.

XS(0-2) 799-091

S(4-6) 799-106

M(8-10) 799-159

L(12-14) 799-201

XL(16) 799-235

1X(18W-20W) 799-421

2X(22W-24W) 799-531

3X(26W-28W) 799-656

reg. \$44.99

\$34.99



ALL NEW

Pearly Beaded Coin Necklace Set

Set of 2. Pearlesque beads and goldtone pendant set in goldtone. Longer necklace, 21" L with 3½" extender; shorter necklace, 16½" L with 3½" extender.

799-675

reg. \$24.99

\$19.99 the set

Casual Summer Earring Set

Set of 3 drops. With goldtone, pearlesque beads or acrylic. Approx. 1"-1½" L. Pierced.

799-766

reg. \$19.99

\$14.99 the set



2 necklaces can be worn separately and together

3-pair earring set



ALL NEW

Pearly Studded Starfish Necklace

Goldtone chain and pendant with pearly stone accents. 16½" L with 3½" extender.

799-842

reg. \$12.99

\$9.99

Turquoise-Color Conch Seashell Necklace

Goldtone chain with turquoise-colored pendant. 16½" L with 3½" extender.

800-010

reg. \$12.99

\$9.99



bracelet and earring set

Beach Day Bracelet and Earring Set

Goldtone with pearlesque and goldtone charms. Bracelet, 7½" L with 1" extender. Pierced drops, 2" L.

803-340

reg. \$22.99

\$16.99 the set

Sea life Mixed Earring Set

Set of 4 goldtone studs. Under ½" L. Pierced.

800-651

reg. \$16.99

\$12.99 the set

4-pair earring set

beachy beauties

Sweet symbols to add a little seaside luster to your look.

vibrant vibes

❖ **Button Down Eyelet Shirt**
Magenta button-down shirt with eyelet front, solid knit back and short sleeves with rolled cuffs. Front body: 100% cotton. Knit back panel: polyester/rayon/spandex. Center back length: 26" on M; 28½" on 1X. Machine wash, line dry. Imported.
XS(0-2) 833-929
S(4-6) 833-011
M(8-10) 833-026
L(12-14) 833-030
XL(16) 833-045
1X(18W-20W) 833-050
2X(22W-24W) 833-064
3X(26W-28W) 833-079
reg. \$42.99
\$32.99

BOLD MAGENTA SHADE
is fun and fresh for summer

MIXED MEDIA SHIRT
with an eyelet front and solid knit back



2-PIECE SET



ON-TREND
boxy fit, plus short sleeves and a round neckline

CROPPED
pull-on pants with an elastic waist

❖ **2-Piece Casual Lounge Set**
Abstract cloud-print set. Top with round neckline, short sleeves and boxy fit; and matching cropped pull-on pants. Polyester/spandex. Center back length: 22" on M; 23½" on 1X. Inseam: 25" on all sizes. Machine wash and dry. Imported.
XS(0-2) 833-098 XL(16) 833-140
S(4-6) 833-102 1X(18W-20W) 833-155
M(8-10) 833-117 2X(22W-24W) 833-270
L(12-14) 833-136 3X(26W-28W) 833-284
reg. \$49.99
\$39.99 the set

floral whimsy

❖ **Flutter Sleeve Handkerchief Dress**
Blue-and-white-print dress with round neckline, smocked detail on shoulders, flutter sleeves, elastic waist and handkerchief hem. Rayon/spandex. Center back length: 42½" at shortest point, 51½" at longest point on M; 43½" at shortest point, 52½" at longest point on 1X. Machine wash, dry flat. Imported.
XS(0-2) 832-713 XL(16) 832-751
S(4-6) 832-728 1X(18W-20W) 832-766
M(8-10) 832-732 2X(22W-24W) 832-819
L(12-14) 832-747 3X(26W-28W) 832-838
reg. \$62.99
\$48.99

❖ **Buckle Detail Slide Sandal**
Tan slide sandal with pebble upper with buckle detail. Man-made materials. Imported.
6 832-326 9 832-680
7 832-379 10 832-694
8 832-675 11 832-709
reg. \$32.99
\$24.99



APPAREL SIZE CHART			
SIZE	BUST	WAIST	HIP
XS 0/2	30.5"-32"	23.5"-25"	32.5"-34"
S 4/6	33.5"-35"	26.5"-28"	35.5"-37"
M 8/10	36.5"-38"	29.5"-31"	38.5"-40"
L 12/14	39.5"-41"	32.5"-34"	41.5"-43"
XL 16	43"-44"	35.5"-36.5"	44.5"-45.5"
1X 18W/20W	46.5"-48.5"	39"-41"	48"-50"
2X 22W/24W	50.5"-52.5"	43"-45"	52"-54"
3X 26W/28W	54.5"-56.5"	47"-49"	56"-58"

HANDKERCHIEF HEM
adds movement and flow

ELASTIC WAIST
fits comfortably and provides definition



Murano Blue Collection
Murano-blue glass beads and sodalite accent stones set in goldtone.

Necklace and Earring Set
With reconstituted stones and acrylic beads. 16½" L with 3½" extender. Lobster closure. 1" L pierced drops.
831-320
reg. \$24.99

\$19.99 the set

Stretch Ring
Reconstituted stone, 1" W. One size fits most.
831-372
reg. \$16.99

\$12.99

Stretch Bracelet
With acrylic beads. One size fits most.
831-334
reg. \$16.99

\$12.99



necklace and earring set

day & night

Luxe up your look with pretty pendants, Murano blues and rainbow hues.



set includes seven pendants and one necklace

Days Of The Week Necklace and Charm Set
Goldtone chain with seven interchangeable goldtone pendants with pearlesque, clear stone or turquoise-like accents. 16½" L with 3½" extender. 832-288
reg. \$22.99

\$16.99 the set



Ombre Color Teardrop Earrings
Pear-shape colored glass stones with CZ accents. 1" L drops. Pierced.
Purple Ombre 832-273
Blue Ombre 832-220
Pink Ombre 832-269
reg. \$12.99
\$9.99 each

Fancy Crystals Collection
Goldtone with crystal stone accents.

Link Necklace
16½" L with 3½" extender.
831-482
reg. \$22.99
\$16.99



2-ring set

Hoop Earrings
Approx. ¾" L. Pierced.
831-831
reg. \$12.99
\$9.99

Ring Set
Set of two.
6 831-520
8 831-702
10 831-740
reg. \$16.99
\$12.99 the set



Murano Blue Dial Watch
White leather-like band, 9" L. Mosaic-pattern dial with goldtone case, 31mm. diam. Quartz movement. Water-resistant to 3 ATM.
831-430
reg. \$46.99
\$36.99

Chasing Sunsets Collection
A mix of colored glass beads with metal accents.

Beaded Necklace
16½" L with 3½" extender.
reg. \$16.99
\$12.99 each



Red 831-937

Purple 831-941

Blue 831-846

Red 831-956

Purple 832-201

Blue 832-182

Stretch Bracelet
With matching tassel and metal charm. One size fits most.
reg. \$12.99
\$9.99 each

GREAT GIFTS! FATHER'S DAY IS JUNE 16.



picks for him

Durable stainless steel pieces and
comfy loungewear, perfect for
Father's Day.

necklace and
bracelet set

NEW

Men's Collection
Stainless steel pieces.

**Dad Layered-
Tag Necklace**
24" L. Lobster
closure.
Pendant, 1" L.
804-346
reg. \$24.99
\$19.99

Men's 2-Piece Chain Set
Necklace and bracelet
foxtail-woven chain set with
CZ accent. Chain, 22" L.
Bracelet, 9" L.
804-418
reg. \$32.99
\$24.99 the set

ELASTIC
WAISTBAND
with
drawstring

cozy combo

NEW

Men's Striped PJ Pant
Striped pull-on bottoms
with elastic waistband with
drawstring and side-seam
pockets. 100% cotton.
Inseam: 30" on all sizes.
Machine wash, dry flat.
Imported.
S 804-623
M 804-700
L 804-972
XL 806-243
XXL 806-430
reg. \$32.99
\$24.99

NEW

Men's Slipper
Navy brushed PU upper
with stitching detail and
quilted insole. Man-made
materials. Imported.
M(7-8) 804-130
L(9-10) 804-145
XL(11-12) 804-150
XXL(13-14) 804-164
reg. \$22.99
\$16.99

TREADED
SOLE
for
no-slip
grip

LIP Honey Peach 327-721	LIP Lava Red 327-740	LIP Passion Red 327-650	LIP Red Brick 330-451	LIP Chocolate 330-667	LIP Simply Spice 330-614
LIP Mystery Mauve 330-538	LIP Candy Apple 327-903	LIP Pink Bouquet 330-356	LIP Merlot 330-284	LIP Perfect Plum 330-887	LIP Au Naturel 330-318
BROW Light Blonde 331-109	BROW Blonde 331-113	BROW Tawny 331-128	BROW Light Brown 331-151	BROW Dark Brown 331-147	BROW Brunette 331-242
CREAM Emerald Green 334-332	CREAM Starry Night 334-347	CREAM Saturn Grey 334-328	CREAM Majestic Plum 334-313	CREAM Cosmic Brown 334-351	CREAM Blackest Black 334-366
DIAMOND Sterling 331-960	DIAMOND Teal Sparkle 331-606	DIAMOND Olive 331-940	DIAMOND Twilight Sparkle 331-553	DIAMOND Sugar Plum 331-625	DIAMOND Purple Rain 332-071
DIAMOND Smoky Diamond 331-280	DIAMOND Brown Sugar 331-568	DIAMOND Black Ice 331-610	WATERPROOF Blue Skies 334-237	WATERPROOF Raisin 332-200	WATERPROOF Brown Chocolate 332-124
WATERPROOF Seafoam Green 334-241	WATERPROOF Smoky Grey 332-162	WATERPROOF Blackest Night 229-491	WATERPROOF Midnight Blue 332-158		

**ONLY \$2.99
EACH**

Available in Lipliner, Brow Definer and Cream, Diamond and Waterproof Eyeliner. Excludes Always On Point and Liquid Eyeliners.

**fmg Glimmer Liners
for Eyes, Brows and Lips**
Long-wearing. Retractable. Formulated
without parabens, sulfates and talc.
Each, .01 oz. net wt.
reg. \$9



© 2024 The Avon Company. All rights reserved.

Enjoy special prices and offers with an Avon account or Representative.

CAMPAIGN 11, 2024
THE AVON COMPANY
165 BROADWAY, NY, NY 10006

avon.com



Brochure effective until _____



See our commitment at
www.avon.com/animal-welfare

RETURN POLICY If you are not satisfied, return any item within 45 days. View Avon's full 45-Day Return Policy at avon.com/shipping-returns.