

# A

CAMPAIGN 12

# W A T E R



## hello H<sub>2</sub>GLO!

NEW fmg GLOKOLOR Collection.  
CLEAN. VEGAN. HYDRATION.

# Say hello to makeup, moisture and more!

New intensely  
hydrating collection  
that feels good  
and is good for you!

Plus, NO mineral  
oil, animal-derived  
ingredients,  
parabens, sulfates  
or phthalates!



# free

**FMG COLORS OF LOVE GLOW  
BALM DUO ILLUMINATING STICK**  
with any \$30 makeup purchase,  
pages 4-15.  
**\$20 VALUE**  
LIMITED QUANTITIES

Sold separately on Avon.com.

Enjoy these special prices and exclusive offers only  
when you shop with an Avon Representative.

NEW



# primed to glow

Prep step with instant boost of moisture!

Enjoy these special prices and exclusive offers only when you shop with an Avon Representative.



With aloe vera, agave and algae extracts. Helps soothe and nourish the complexion.

Ideal for a no-fuss, fresh-faced, natural dewy look.

**fmg GLOKOLOR Hybrid Face Primer**

Light, breathable formula helps soften the appearance of imperfections while creating a flawless canvas for makeup. Dermatologically tested. Free from parabens and sulfates. Vegan. 1 fl. oz. **787-637 reg. \$24 \$20**



**FREE**

fmg Colors of LOVE Glow Balm Duo Illuminating Stick details, page 3. Limited quantities.

NEW

Ultrafine water-based formula awakens skin while locking makeup in place.

**fmg GLOKOLOR Hybrid Face Mist**

Spritz it anytime, anywhere for an instant boost of moisture and to refresh skin. Dermatologically tested. Vegan. Free from parabens and sulfates. 2.7 fl. oz. **787-599 reg. \$24 \$20**



With aloe vera, agave and algae extracts. Helps soothe and nourish the complexion.

**fmg**  
Hybrid Face Mist  
Bruine hybride  
pour le visage  
80 ml/2.7 fl. oz. U.S.



With a burst of peppermint oil. Lips feel smooth and refreshed.

Rich serum pampers lips.

**fmg GLOKOLOR Lip Serum Pencil**

Infused with a nourishing lip booster complex and argan oil. Free from parabens and fragrance. Vegan. .06 oz. net wt. **787-508 reg. \$20 \$16**

# pep squad

Refresh your skin with a quick mist and give lips a pop of peppermint!



**FREE**

fmg Colors of LOVE Glow Balm Duo Illuminating Stick details, page 3. Limited quantities.

Enjoy these special prices and exclusive offers only when you shop with an Avon Representative.

# face-friendly color

After your clean fmg GLOKOLOR prep steps, follow with makeup that not only looks good but also has good-for-you ingredients!

**fmg Cashmere Cushion Foundation**  
Velvety soft-matte color. With soothing calendula extract, moisturizing squalane. Light-to-medium coverage. Includes sponge puff applicator. Free from parabens, phthalates and fragrance. .42 oz net wt. reg. \$27  
**\$24.50**

Available in Cool (C), Neutral (N) and Warm (W) undertones.



N275  
489-051

**PRODUCT** Cushion Foundation

**INGREDIENT** Niacinamide

**BENEFITS** brightens skin for a luminous finish



**PRODUCT** Under Eye Primer + Brightening Perfector

**INGREDIENT** Caffeine

**BENEFITS** diminishes the look of dark circles, puffiness + fine lines

rise & shine

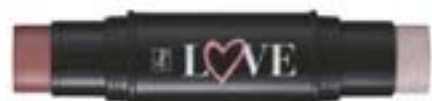


**B. fmg Match Corrector Brightening Perfector**  
Creamy veil of color helps correct, brighten and blur flaws. Buildable sheer-to-medium coverage with a demi-matte finish. Free from talc, parabens, sulfates, alcohol and fragrance. .11 oz. net wt. reg. \$13  
**\$9.99**



**A. fmg Cashmere Under Eye Primer**  
Smoother, brighter, flawless-looking eyes. Infused with green tea extract and vegan collagen. Helps concealer wear all day. Free from parabens, phthalates and fragrance. .317 oz. net wt. 010-429 reg. \$22  
**\$14.99**

Fair-Light  
932-396



**FREE** fmg Colors of LOVE Glow Balm Duo Illuminating Stick details, page 3. Limited quantities.

Enjoy these special prices and exclusive offers only when you shop with an Avon Representative.

**PRODUCT** Serum Tint Foundation + Tinted Moisturizer

**INGREDIENT** Light-diffusing Silica

**BENEFITS** blurs flaws and creates a soft-focus veil of color

**A. fmg Match Filter Serum Tint Foundation**

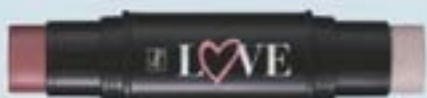
Lightweight creamy formula instantly hydrates and helps blur and even tone. With hyaluronic acid, vitamin E and a berry complex. Buildable sheer-to-medium coverage with a demi-matte powder finish. Suitable for all skin types. Includes sponge applicator. Free from talc, parabens and fragrance. .31 oz. net wt. **reg. \$18 \$14.99**

Packaging may vary.



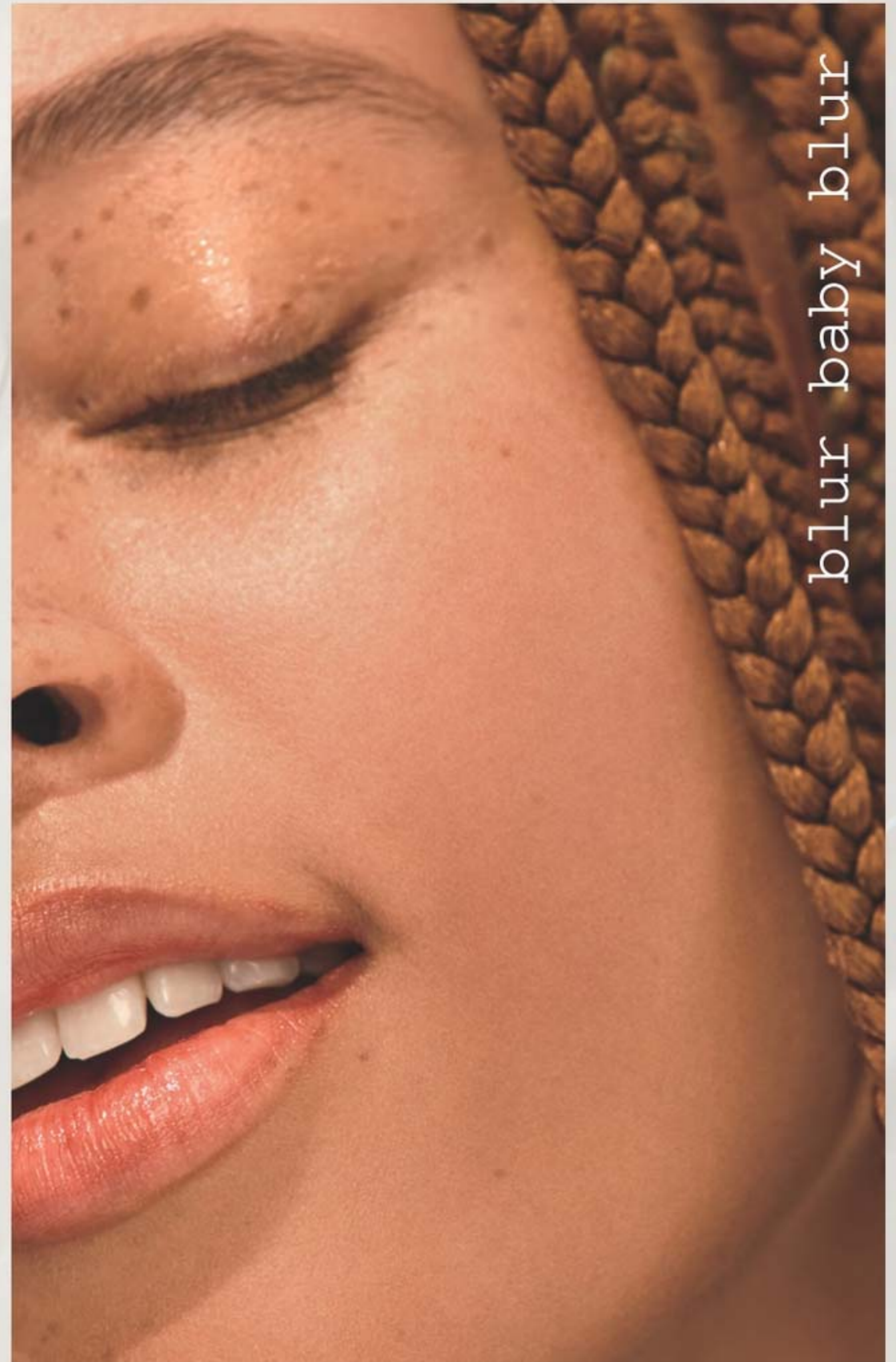
 Fair A. 932-491 B. 718-044	 Fair Light A. 932-620 B. 131-227	 Light A. 932-640 B. 718-059
 Light Medium A. 932-654 B. 718-063	 Soft Medium A. 932-783 B. 131-997	 Medium A. 932-836 B. 718-078
 Medium Deep A. 933-153 B. 718-082	 Tan Deep A. 933-168	 Deep A. 933-172

**B. fmg Magix Tint Radiant Tinted Moisturizer**  
Lightweight moisturizing formula helps even skin tone, boost moisture and blur flaws. With passion fruit, chia and sunflower seed oils, vitamins E and B5. Buildable coverage with a radiant finish. Suitable for all skin types. Free from parabens, sulfates and talc. 1 fl. oz. **reg. \$14 \$10.99**



**FREE**

fmg Colors of LOVE Glow Balm Duo Illuminating Stick details, page 3. Limited quantities.





reboot your youth

**fmg Cashmere Essence Lipcream**  
 Plant-based formula. Improves lip hydration and protection. With ginseng cell extract, antioxidant meadowfoam seed oil and vitamin E. High-shine finish. Free from parabens, sulfates and talc. Vegan. .11 oz. net wt. reg. \$22 **\$18**

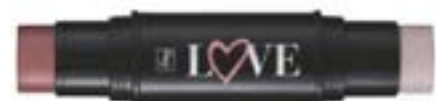
Coral Charm  
879-148

**PRODUCT** Essence Lipcream

**INGREDIENT** Bio-Retinol

**BENEFITS** anti-aging results without the irritation

- |                                                                                                               |                                                                                                            |                                                                                                            |                                                                                                           |                                                                                                               |
|---------------------------------------------------------------------------------------------------------------|------------------------------------------------------------------------------------------------------------|------------------------------------------------------------------------------------------------------------|-----------------------------------------------------------------------------------------------------------|---------------------------------------------------------------------------------------------------------------|
|  Chic Cocoa<br>881-584     |  Cherry Rush<br>876-870 |  Day Dreamer<br>883-773 |  Cozy Rosy<br>879-626  |  Coral Charm<br>879-148  |
|  Honey Mandarin<br>876-024 |  Pink Lady<br>879-296   |  Plush Peony<br>873-977 |  Cheeky Red<br>883-147 |  Summer Berry<br>881-766 |



**FREE** fmg Colors of LOVE Glow Balm Duo Illuminating Stick details, page 3. Limited quantities.

**PRODUCT** Eyelash Primer + Volume Mascara

**INGREDIENT** Biotin

**BENEFITS** strengthens and lengthens for a youthful flutter



**A. fmg Cashmere Eyelash Primer**  
 Lash-building primer that visibly lengthens and boosts volume. Nourishing formula maximizes the performance of any mascara. Free from parabens, sulfates and talc. Vegan. .35 fl. oz. 948-391 reg. \$22 **\$14.99**

**B. fmg Cashmere Ultimate Volume Mascara**  
 Rich, pigmented formula with extreme staying power. Leaves lashes feeling soft. Won't budge, smudge or transfer. Triple sphere brush. Free from parabens, sulfates and talc. Vegan. .27 fl. oz. Rich Black 153-736 reg. \$22 **\$14.99**

Enjoy these special prices and exclusive offers only when you shop with an Avon Representative.



**fmg Glimmer Liner for Eyes and Brows\***  
 Long-wearing. Retractable. Free from parabens, sulfates and talc. Each, .01 oz. net wt. reg. \$9  
**\$3.99 each**

**Available in Diamond Eye Liner:**  
 Finely milled pearl for a subtle sparkle.  
**Cream Eye Liner:**  
 Soft sheen finish.  
**Brow Definer:**  
 Smudge-, transfer-, sweat- and waterproof.

**PRODUCT** Eye + Brow Liners

**INGREDIENT** Vitamin E

**BENEFITS** smooth, glide-on application + velvety results

<b>DIAMOND Olive</b> 331-940	<b>DIAMOND Teal Sparkle</b> 331-606	<b>DIAMOND Twilight Sparkle</b> 331-553	<b>DIAMOND Smoky Diamond</b> 331-280	<b>DIAMOND Purple Rain</b> 332-071	<b>DIAMOND Sugar Plum</b> 331-625	<b>DIAMOND Brown Sugar</b> 331-568
<b>DIAMOND Black Ice</b> 331-610	<b>DIAMOND Sterling</b> 331-960	<b>CREAM Emerald Green</b> 334-332	<b>CREAM Blackest Black</b> 334-366	<b>CREAM Cosmic Brown</b> 334-351	<b>CREAM Majestic Plum</b> 334-313	<b>CREAM Starry Night</b> 334-347
<b>CREAM Saturn Grey</b> 334-328	<b>BROW Light Blonde</b> 331-109	<b>BROW Blonde</b> 331-113	<b>BROW Tawny</b> 331-128	<b>BROW Light Brown</b> 331-151	<b>BROW Dark Brown</b> 331-147	<b>BROW Brunette</b> 331-242



**FREE** fmg Colors of LOVE Glow Balm Duo Illuminating Stick details, page 3. Limited quantities.

smooth operators

**PRODUCT** Shiny Lip Oil + Nourishing Mascara

**INGREDIENT** Argan Oil

**BENEFITS** healthier, smoother lips + lashes



**A. Tpsy Drunk Shiny Lip Oil**  
 Instantly absorbed with a shiny tint of color. No stickiness. With jojoba and castor oils. Free from parabens, sulfates, phthalates and talc. .13 oz. net wt. reg. \$15  
**\$12**

My Boo 495-216 Love Galore 495-197

**B. Avon True Color SuperExtend Nourishing Mascara\***  
 With vitamin E and coconut oil. Won't clump, smudge or flake. Free from sulfates and talc. .237 fl. oz.  
**Black 550-596**  
**Brown Black 550-615**  
 reg. \$11  
**\$8.99**

\*Packaging may vary.

Enjoy these special prices and exclusive offers only when you shop with an Avon Representative.



**EYE SPY  
A DEAL!  
SAVE UP  
TO 30%**



# CathyCat

Create eyes that captivate—shrouded in mystery and exuding seduction—purrfect for any occasion and all nine lives!



## CATHYCAT

### NEW SHADES!

Matte shadow stick colors and defines for all-day play.

**fmg CathyCat Shadow Gaze Matte Color Stick**  
Comfortable, long-wearing formula provides the perfect amount of playtime for blending and building color intensity. Once the shade sets, it will not budge or smudge. .0476 oz. net wt. reg. \$17  
**\$13.99**



Buff 956-912	Rosewood 958-547
Taupe 958-126	Espresso 958-896
Azure 959-213	Mauve 958-331
Berry 958-619	Blush 958-638

NEW!  
Aubergine  
786-960

## CATHYCAT

Create a sultry cat-eye look with this rich, long-wearing liquid liner.

**fmg CathyCat Nine Lives Precision Liquid Eyeliner**  
Slim-tip brush delivers a precise line of waterproof and sweat-proof color that will not skip, tug or smudge. .068 fl. oz. **Blackest Black**  
800-829  
reg. \$18  
**\$12.99**



Perfectly designed false lashes add length, dimension and volume.

**fmg CathyCat LushLashes**  
Vegan. Includes one pair of false lashes and glue. Available in two flirty styles! reg. \$11  
**\$7.99 each**



Soft & Sultry  
959-304

Fierce & Flared  
960-050

No-budge, water-resistant lashes, from dawn to dusk.

**fmg CathyCat Play All Day Mascara**  
Long-wearing mascara coats each lash with rich pigments that will not budge or smudge for nine lives of perfect wear. Nourishing formula with a blend of conditioning coconut and argan oils and lash-supporting panthenol. Removes easily with soap and water. .28 oz. net wt. **Blackest Black**  
904-712  
reg. \$17  
**\$12.49**



Lengthen, curl and captivate!

**fmg CathyCat Curl & Flare Mascara**  
Long-lasting mascara applies evenly. Uniquely curved brush provides major lift, extraordinary curl and impressive length. Nourishing formula with a blend of conditioning coconut and argan oils and lash-supporting panthenol. .28 oz. net wt. **Blackest Black**  
901-269  
reg. \$17  
**\$12.49**



Take your brow game to new heights!

**fmg CathyCat High Arch Precision Brow Pencil**  
Long-wearing cream-to-powder pencil glides on smoothly, creating a well-defined look. Waterproof formula stays in place without budging or smudging for perfectly gorgeous brows. .01 oz. net wt. reg. \$15  
**\$9.99**

Blonde 837-423	Light Brown 837-438	Ash Brown 837-610
Brown 837-442	Dark Brown 837-605	Black Brown 837-639

Brown  
837-442



**EYE SPY  
A DEAL!  
SAVE UP  
TO 30%**



Featured shade:  
fmg Glimmer  
Eyeshadow Quad  
in Tigress.

### GLIMMER EYES

Color-coordinated shades work together for expressive eye looks that last all day.

**fmg Glimmer Eyeshadow Quad**  
Creamy soft powder formula hugs lids with rich color for all-day wear, without the fallout. Free from parabens and fragrance. Available in Multi or All Matte. .21 oz. total net wt. reg. \$15 **\$10.99**

<b>MATTE Tigress</b> 741-333	<b>MATTE Calypso</b> 741-261
<b>MATTE Icon</b> 741-439	<b>MATTE Bombshell</b> 741-170
<b>MULTI Maven</b> 884-750	<b>MULTI Siren</b> 901-493
<b>MULTI Temptress</b> 884-731	<b>MULTI Darling</b> 880-789
<b>MULTI Vixen</b> 901-474	<b>MULTI Minx</b> 885-738
<b>MULTI Goddess</b> 901-330	<b>MULTI Muse</b> 880-459
<b>MULTI Mistress</b> 883-902	<b>MULTI Idol</b> 900-975

### GLIMMER EYES

Easy-glide, quick-dry precision felt-tip liner delivers rich color with long-lasting wear.

**fmg Glimmer Liquid Eyeliner**  
Matte finish. Removes with ease using soap and water or makeup remover. Transfer-, sweat- and waterproof. .037 fl. oz. **Blackest Black 354-380** reg. \$12 **\$8.99**



Unique cap with built-in sharpener!

**fmg Glimmer Always On Point Eyeliner\***  
Smudge- and waterproof. Creamy, smooth formula stays color-true all day. Free from parabens, sulfates and talc. .01 oz. net wt. reg. \$9 **\$6.79**

Black  
016-389

Black  
016-389      Black Brown  
016-446

Vivid stay-all-day shimmery color.

**fmg Glimmershadow Liquid Eyeshadow\***  
Long-wearing, no-smudge, no-crease, buildable formula with no messy fallout. Water-resistant. Paraben-, phthalate- and sulfate-free. .07 fl. oz. reg. \$12 **\$7.99**



SHIMMER  
Pink Topaz  
479-150

Available in 3 ultrafine pearl finishes:  
Matte Sateen, Shimmer or Glitter.

<b>MATTE SATEEN Citrine</b> 451-120	<b>MATTE SATEEN Pink Sapphire</b> 448-591	<b>MATTE SATEEN Jasper</b> 500-566	<b>MATTE SATEEN Tiger's Eye</b> 500-585
<b>SHIMMER Iron Violet</b> 469-061	<b>SHIMMER Rose Gold</b> 469-095	<b>SHIMMER Crystal Lilac</b> 479-040	<b>SHIMMER Bronze Age</b> 469-100
<b>GLITTER Diamond Dust</b> 478-866	<b>GLITTER Ultramarine</b> 469-042	<b>GLITTER Fool's Gold</b> 469-076	<b>GLITTER Peach Sapphire</b> 469-057



Midnight  
Blue  
332-158

Defines eyes perfectly.

**fmg Glimmer Waterproof Eyeliner\***  
Long-wearing. Retractable. Smudge-, transfer-, sweat- and waterproof. .01 oz. net wt. reg. \$9 **\$3.99**

<b>Smoky Grey</b> 332-162	<b>Blackest Night</b> 332-143	<b>Midnight Blue</b> 332-158	<b>Seafoam Green</b> 334-241
<b>Blue Skies</b> 334-237	<b>Brown Chocolate</b> 332-124	<b>Raisin</b> 332-200	

\*Packaging may vary.



Intense, decadent black shades with dazzling jewel undertones.

**fmg Cashmere 24 HR Cream Eyeliner**  
Kohl formula with 24-hour wear. Waterproof, matte finish. Smudge applicator to blend. Vegan. Paraben-, phthalate- and fragrance-free. .04 oz. net wt. reg. \$18  
**\$12.99**



Expertly curated 9-shade palettes to create an array of looks.

**fmg Cashmere Eyeshadow Palette**  
Long-wearing creamy powder shadows in satin, matte and sparkling finishes. Crease- and smudge-proof. Talc-, paraben- and fragrance-free. .63 oz. total net wt. reg. \$40  
**\$27.99 each**



Fills in brows as it boosts color.

**fmg Cashmere 24 Hour Brow Pomade**  
Smudge-proof, sweat-proof formula. Matte finish. Comes with dual-ended applicator with angled-tip brush and spoolie, 4 1/2" L. .14 oz. net wt. reg. \$24  
**\$15.99**



Universal clear shade for a professional sculpted look.

**fmg Colors of LOVE Hi-Brow Sculpting Brow Gel**  
Flexible, flake-proof formula. Soft matte finish. .11 fl. oz. **Universal Love (Clear)** 536-695 reg. \$17  
**\$11.79**



Full, fluffy brows.

**fmg Colors of LOVE Hi-Brow Tinted Brow Gel**  
Water-resistant, smudge- and flake-proof formula for 24-hour wear. Soft matte finish. .11 fl. oz. reg. \$17  
**\$11.79**



Super volume.

**fmg Glimmer SuperShock Volumizing Mascara**  
Instant high-gloss lushness. .338 fl. oz. **Black 016-651** reg. \$11  
**\$7.29**



Waterproof volume.

**Wash-Off Waterproof Mascara**  
Washes off easily with soap and water. .21 oz. net wt. **Black 864-301** reg. \$10  
**\$6.29**



Volumizing and lengthening heart-shaped fibers + intense black pigments.

**fmg LOVE at 1st Lash Mascara**  
Love Complex™ with lycopene, olive oil and vitamin E. Transfer-resistant. Clump-, flake- and smudge-proof. .3 fl. oz. **Blackest Black 698-670** reg. \$15  
**\$10.49**



Lash-hugging heart-, flower- and cylinder-shaped lengthening fibers for voluminous, waterproof wear.

**LOVE at 1st Lash Waterproof Mascara**  
Love Waterproof Complex™ with Lashrez, olive oil and vitamin E. Transfer-resistant. Clump-, flake- and smudge-proof. .3 fl. oz. **Waterproof Blackest Black 293-805** reg. \$15  
**\$10.49**

*cobra brush lifts & curls*



For more Colors of Love makeup, visit Avon.com.



Featured shade:  
24 Hour Foundation in Latte.



Good Housekeeping Magazine  
2021 Beauty Award Winner.

**fmg Cashmere 24 Hour Foundation\***  
24 hours of comfortable, breathable wear.  
Full, flexible coverage. Soft-focus matte finish.  
Visibly blurs pores and fine lines for a smoother  
complexion. With antioxidant botanical extracts.  
Water-resistant. Vegan. 1 fl. oz. **reg. \$32**  
**\$24.50**

**CASHMERE FACE**

Cannoli (W) 123-734	Nougat (W) 126-107	Meringue (W) 126-202
Buttercream (N) 131-834	Marshmallow (N) 131-849	Custard (N) 131-906
Strudel (C) 133-660	Macadamia (W) 136-525	Ganache (W) 136-889
Cappuccino (N) 136-893	Chai (WO) 136-559	Vanilla (W) 142-254
Toasty (N) 139-027	Praline (N) 141-406	Tiramisu (W) 137-278
Soufflé (N) 139-730	Muffin (W) 142-307	Gingerbread (C) 142-311
Pudding (N) 146-097	Amaretto (N) 146-188	Latte (W) 147-480
Brownie (WO) 147-461	Hazelnut (W) 147-495	Cognac (W) 147-681
Pecan (N) 149-699	Java (W) 149-722	
Clove (N) 149-756	Truffle (C) 150-263	

\*Available in Cool (C), Neutral (N), Warm (W) and Warm Olive (WO) undertones.

\*\*Available in Cool (C), Neutral (N) and Warm (W) undertones.

**CASHMERE FACE** luxury in the shade of you

2-in-1 powder can be worn wet or dry.  
Use as foundation or setting powder.

**fmg Cashmere Compact Powder Foundation\*\***  
Buildable medium-to-full coverage.  
Soft-focus matte finish. Amino-acid-coated pigments control shine. With collagen, lavender oil, and artichoke and chamomile extracts. Includes mirror compact and sponge. .40 oz. net wt. **reg. \$36**  
**\$30**

N110 107-830	W110 111-294	W120 111-309	C110 111-313
N120 111-370	W130 111-423	W140 111-514	W150 111-438
W160 111-533	N130 111-548	N140 111-605	W170 111-610
N150 111-658	W180 112-229	N160 112-248	C120 112-286



N150  
111-658

24 hours of comfortable,  
breathable wear.

**fmg Cashmere 24 Hour Concealer\***  
Full coverage. Soft-focus matte finish. Visibly corrects dark circles and imperfections. With antioxidant botanical extracts. Water-resistant. .20 fl. oz. **reg. \$22**  
**\$16**

Sugar (W) 109-484	Mochi (N) 110-761	
Parfait (W) 113-058	Macaroon (N) 113-081	Tart (WO) 115-012
Butterscotch (W) 115-156	Waffle (W) 115-869	Biscuit (WO) 116-650
Tres Leches (N) 119-424	Toffee (W) 123-662	Cupcake (N) 123-715

Tres Leches (N)  
119-424



Packaging may vary.

Enjoy these special prices and exclusive offers only when you shop with an Avon Representative.

**TPSY I Want to Highlight You Liquid Highlighter**  
 Use as a gloss primer and highlighter, or mix into your makeup to customize your shine! Solar Glow Highlighting Complex formula with moisturizing ingredients and ultra-fine pearls for a subtle dewy finish. 1.01 fl. oz.  
**Savage Glow 495-235**  
 reg. \$18  
**\$15**



**TPSY + LIP**



TPSY I Want to Highlight You Liquid Highlighter in Savage Glow.

Get kiss-ready with the perfect partner.

Sour Candy 495-254

**TPSY Forever Lip Marker**  
 Hydrating formula that stays on lips all day. Unique marker design allows for easy application. Kiss-proof. .08 fl. oz. reg. \$15  
**\$12**



MAKEUP

Lush color and shine.

**fmg Cashmere Rouge Lacquer**  
 High-performance all-day wear. Dual-ended. Full-coverage color dries quickly without feathering. Moisturizing top coat locks color in place for a high-shine finish. Transfer-, smudge- and feather-proof. .20 oz. total net wt. reg. \$22  
**\$18**



Mauvelous 334-681



A nude pout for every party.

PYT 250-572

**Birthday Balm Lip Crayon**  
 Butter-soft balm with a sheer color and shine. .1 oz. net wt. reg. \$12  
**\$10.99**



A burst of vivid color with a featherlight feel and velvety soft matte finish.

**Mattitude Liquid Lip**  
 Weightless, non-drying formula that lasts for hours. Poppy seed oil and vitamin E nourish lips. Paraben-, sulfate- and phthalate-free. .13 fl. oz. reg. \$13  
**\$10.99**



Relentless 750-607



Dual-ended lip stain with all-day wear and saturated color.

Renegade Ruby 494-281

**2-in-1 Lip Tattoo Lip Line & Fill Duo**  
 No smudging, feathering or budging. Infused with sunflower seed oil to help hydrate lips. Paraben-, gluten-, phthalate- and sulfate-free. Vegan. .05 fl. oz. reg. \$13  
**\$10.99**





Hot NEW shades, just in time for a spring refresh!

NEW! Aurora 726-584

NEW! Dahlia 726-350

NEW! Stellar 726-550

NEW! Honeyflower 726-531

**GLIMMER LIP**

Earth Angel 886-734	Windstorm 883-845	Desert Moon 449-803
Fog 888-225	Cyclone 890-566	Twilight 449-822
Sierra Sunset 890-805	Equinox 449-818	Luna 895-170
Aster 448-769	Poppy 897-651	Songbird 897-647
Constellation (Shimmer) 449-731	Blaze 896-880	Firebolt 895-443
Wild Cherry 449-708	Hibiscus 898-021	Wildflower 898-040
Rose Angel 897-939	Plum Blossom 449-765	Wildrose 898-533
Eclipse 448-740	Tulip 449-712	Celestial 895-352
Violet Night 898-548	Morning Glory 449-750	Nova 898-552

Enticing and inspiring spectrum of versatile and expressive shades.

**fmg Glimmer Satin Lipstick**  
Lightweight, smooth and creamy formula. Infused with antioxidant pomegranate extract. Buildable medium-to-full coverage. Soft satin finish. .10 oz. net wt. reg. \$11 **\$8.49**

# FIND YOUR POWER COLOR

**GLIMMER LIP**

Plump your pout instantly.

**fmg Glimmer Lip Plumper**  
Volulip™ plumps, softens and moisturizes lips. Dimensional wet shine. Non-sticky creamy formula with hydrating castor seed oil and antioxidant vitamin E. No stinging or burning, just fuller lips! Shiny gloss finish gives hours of wear without feathering. Universally flattering, brilliant shade. Refreshing peppermint scent. .3 fl. oz. **Brilliance 691-130 reg. \$12 \$9.99**



Get your lips ready for prime time!

**fmg Glimmer Lip Polish**  
Sugar-based formula gently buffs away dry, flaky skin for softer, smoother lips. Helps polish and prepare lips for effortless color application. A blend of vitamin E, moisturizing squalane, and extracts of blueberry, strawberry and raspberry leaves lips feeling supple, pampered and kissably soft. .35 oz. net wt. **594-677 reg. \$14 \$10.99**



Drench lips in dimensional color and shine.

**fmg Glimmer Lip Glaze**  
Non-sticky creamy formula gives hours of wear without feathering. With antioxidant vitamin E. Buildable sheer-to-medium coverage. .3 fl. oz. **reg. \$11 \$8.99**

Shine 691-145	Glow 691-240	Glisten 691-179	Sparkle 691-217
Sheen 691-236	Dazzle 691-221	Flash 691-183	Gleam 691-198

Sheen 691-236



Keep your pout soft and kissable!

**fmg Glimmer Lip Conditioner**  
With mango seed butter, vitamin E, and jojoba and sunflower seed oils. Leaves dry, cracked lips feeling soft and smooth. .12 oz. net wt. **794-578 reg. \$12 \$8.99**



Prevents feathering.

**fmg Glimmer Lipliner\***  
Precise application for sculpted lips. Matte finish. .01 oz. net wt. **reg. \$9 \$3.99**

Honey Peach 327-721	Lava Red 327-740	Passion Red 327-650	Red Brick 330-451
Mystery Mauve 330-538	Candy Apple 327-903	Pink Bouquet 330-356	Merlot 330-284
Au Naturel 330-318	Simply Spice 330-614	Chocolate 330-667	Perfect Plum 330-887

Passion Red 327-650



\*Packaging may vary.

## GLIMMER NAIL

Max shine and vivid color for a salon-worthy manicure that lasts!

### fmg Glimmer Nail Lacquer

Gel-like cushion texture. Silky nail-strengthening formula dries down smooth and even for lasting wear that does not chip. No UV light needed. Free from parabens, talc, gluten, phthalates and fragrance. Vegan. Available in satin or metallic pearl finishes. .4 fl. oz. reg. \$10 **\$7.99**

	
SATIN Black Hole Burgundy 740-648	SATIN Night Sky Berry 740-629
	
SATIN Supernova Red 740-633	SATIN Lunar Tan 740-652
	
SATIN Full Moon Flush 740-671	METALLIC Golden Galaxy 740-796

SATIN  
Night Sky  
Berry  
740-629



2-in-1 base and top coat preps and sets nails.

### fmg Glimmer Nail Base and Top Coat

Breathable, nail-hugging formula provides a smooth base to prime nails and help prevent discoloration and then works as a glossy, sheer protective top coat to help keep nails strong, shielding your manicure from chipping and streaking. Free from parabens, talc, gluten, phthalates and fragrance. Vegan. .4 fl. oz. 708-965 reg. \$10 **\$7.99**



Get mistake-free manis at home.

### fmg Glimmer Nail Lacquer Eraser Pen

Glide over nail edges after applying nail lacquer for a clean and perfected manicure. .135 fl. oz. 704-443 reg. \$10 **\$7.49**



## GLIMMER CHEEK + LIP

**NEW**

Brightens up lips and cheeks.

### fmg Glimmer Lip & Cheek Stain

Highly pigmented shades that wear all day. Lightweight gel formula blends and builds like a dream, providing the perfect pop of gorgeous luminous color. Brush tip applicator. Transfer-proof. Free from parabens and fragrance. Vegan. .19 fl. oz. reg. \$14 **\$11.99**

	Plumeria 628-851
	Rosette 628-832



Creamy formula for lips and cheeks.

### fmg Glimmer Be Blushed Cheek Color

Glides on smoothly without streaking for a natural flush of color. Buildable coverage. Soft dewy finish. With skin-nourishing vitamin E for antioxidant benefits. Free from parabens, phthalates and fragrance. .14 oz. net wt. reg. \$14 **\$10.99**

	Icy Petal 022-854		Blushing Nude 022-911		Golden Rose 022-840
	Tropical Peach 022-964		Crushed Berry 022-945		

Blushing Nude  
022-911



**NEW**

Subtle yet eye-catching radiance.

### fmg Glimmer Powder Illuminator

Finely milled powder creates a multi-dimensional luminous glow instantly. Lightweight buildable formula with vitamin E builds and blends effortlessly, providing a naturally radiant finish. Free from parabens, phthalates and fragrance. .35 oz. net wt. reg. \$14 **\$9.99 each**

	Rosé 463-628
	Prosecco 905-580



Instant pop of color.

### fmg Glimmer Powder Blush

Richly pigmented, silky pressed powder hugs cheeks. Weightless formula with ultrafine pearl for added dimension and vivid payoff blends effortlessly. Buildable coverage and soft matte finish. With skin-nourishing vitamin E for antioxidant benefits. Free from parabens, phthalates and fragrance. .28 oz. net wt. reg. \$14 **\$9.99**

	Petal Pink 618-209
	Pink Passion 618-213
	Cranberry Crush 618-194



## MATCH MAKEUP

### Conceal + Contour + Highlight

#### fmg Match Wand Foundation Stick

Instantly blurs and perfects skin. Helps to control oil and shine. Full and flexible all-over coverage in a demi-matte finish. Water-resistant. With shea butter and antioxidant vitamin E. Perfect for easy touch-ups. Free from parabens, sulfates and phthalates. Vegan. .21 oz. net wt. **reg. \$16 \$12.99**

Meringue (N) 594-863	Marshmallow (N) 594-882	Coconut (N) 594-897	Vanilla (W) 594-935	Macadamia (W) 595-028
Chai (W) 595-157	Toasty (N) 595-229	Cappuccino (W) 595-233	Tiramisu (W) 595-252	Amaretto (N) 595-267
Latte (W) 595-400	Hazelnut (W) 595-860	Pecan (N) 595-946	Truffle (C) 596-297	



## MATCH MAKEUP

### NEW

Camouflage imperfections.

#### fmg Match Wand Correcting Stick

Minimize skin concerns without creasing or caking! With shea butter and vitamin E. Free from parabens, phthalates and sulfates. .21 oz. net wt. **reg. \$16 \$12.99**

Gelato: brightens dullness 726-785	Pistachio: neutralizes redness 726-770	Sherbet: neutralizes dark circles and marks 726-790



Primes, protects and perfects.

#### fmg Match Prime Face Perfector

Flaw-blurring, mattifying primer with SPF 20. Shine-defying microspheres visibly minimize pores and fine lines. Sheer breathable coverage suitable for all skin tones. Soft-focus matte finish. Free from oil and parabens. 1 fl. oz. **932-377 reg. \$14 \$11.49**



Blend of ultra-fine rose quartz, ruby and tourmaline.

#### fmg Match Dust Finishing Powder

Weightless loose mineral powder diffuses light, visibly blurs pores and controls shine. Soft matte finish. Antioxidant green tea extract to enhance and smooth skin. Wear alone or to set makeup. Includes no-spill twist-and-lock sifter. Free from talc, oil and parabens. .21 oz. net wt. **reg. \$17 \$13.99**



Creates an invisible veil that controls shine and sets makeup.

#### fmg Match Set Finishing Powder

Lightweight mineral-infused loose powder formula diffuses light and visibly blurs pores and fine lines. Silky-soft matte finish never looks cakey. Includes puff applicator. Free from talc, parabens and fragrance. .22 oz. net wt. **932-472 reg. \$17 \$13.99**



Mineral-infused loose powder and brush in one!

#### fmg Match Set Finishing Powder To-Go

Creates an invisible veil that controls shine and sets makeup. Lightweight formula diffuses light and visibly blurs pores and fine lines. Silky-soft matte finish never looks cakey. Free from talc, parabens and fragrance. .09 oz. net wt. **227-063 reg. \$19 \$14.99**





## MAKEUP MUST-HAVES

### fmg Vanity Organizer

Makeup-theme print. Four compartments with two removable inside dividers, three outer pockets and lattice elastic straps. Folds for easy storage. 9½" L x 6" W x 5" H. Polyester. Imported.  
**022-816 reg. \$30**  
**\$22.99**



**NEW**

### fmg Unready Makeup Remover Cloth

Dual-sided cloth makes makeup removal quick and easy. Soft short fibers remove makeup while the longer fibers gently exfoliate the skin. Travel-friendly. 100% polyester. 9⅞" sq. Machine wash and dry. Imported.  
**230-176 reg. \$12**  
**\$9.99**



### fmg Makeup Remover Wipes

Formulated with antioxidant vitamin E and an extract blend of aloe, chamomile, cucumber, marshmallow root and soothing oat. Leaves skin feeling soft and clean. Fragrance-free. Resealable pack of 24 wipes.  
**333-867 reg. \$9**  
**\$7.49 each**



### fmg Oil Rewind Roller Ball

Instantly absorbs oil and grease. Control shine throughout the day without disturbing makeup. Reusable 360° rotating volcanic-stone roller helps to absorb excess oil, leaving skin with a light matte finish. Ideal for touching up makeup on the go. Clean after each use. 1" W x 3" H. Plastic handle, protective cap. Imported.  
**508-294 reg. \$16**  
**\$12.99**



### Avon True Color Makeup Setting Spray

Microfine mist helps set makeup in place and dries quickly to an invisible finish. 2 fl. oz.  
**579-382 reg. \$15**  
**\$9.99**



### fmg Express Makeup Brush Wash

Alcohol-free formula. Contains soothing aloe vera and green tea extract. Bristles are left conditioned with no leftover residue. Convenient spray packaging. 1 fl. oz.  
**141-368 reg. \$12**  
**\$9.99**



**NEW**

### fmg Waterproof Lip & Eye Makeup Remover

Dual-layer oil and water remover leaves skin fresh and clean. Infused with moisturizing blend of ether, silicone, hydrocarbon and ester oils. Mineral-, tar-, talc- and paraben-free. 3.7 fl. oz.  
**352-243 reg. \$12**  
**\$7.99**



## DUAL-ENDED BRUSHES & MORE

### fmg Kabuki Brush

With soft, angled bristles to effortlessly blend pressed or loose powder formulas. Retractable. Cap keeps the brush head safely covered when not in use. 3¾" L x 1" diam.  
**732-370 reg. \$16**  
**\$13.99**



### fmg Flawless Complexion Sponge

With a full rounded bottom for all-over makeup application and blending, and flat side for contouring, highlighting and concealing. 1½" W x 2½" H. 100% PU, latex-free.  
**140-160 reg. \$9**  
**\$6.99**



### fmg Eyeshadow Blending Brush

With a soft, domed crease brush on one end and a flattened, all-over eyeshadow brush on the other to apply and buff eyeshadow. 6" L.  
**933-320 reg. \$14**  
**\$10.99**



### fmg Complexion Blending Brush

With a dense, rounded buffing foundation brush on one end and a precise, rounded concealer brush on the other to create a flawless canvas. 6½" L.  
**933-210 reg. \$21**  
**\$16.99**



### fmg Blush & Contour Brush

With a tapered, oval blush brush on one end and a fluffy, angled contour brush on the other to add color and dimension. 7¼" L.  
**933-259 reg. \$20**  
**\$15.99**



### fmg Precision Eye Brush

With an angled eyeliner brush on one end and a pointed pencil brush on the other to highlight or add depth to eyes. 5¼" L.  
**933-187 reg. \$14**  
**\$10.99**



**ULTIMATE** combats multiple signs of aging



Overnight, skin looks smoother, firmer and younger.

**Anew Ultimate Night Repair Night Serum**  
With peptides, licorice, hyaluronic acid and niacinamide. Diminishes the appearance of fine lines and visibly improves skin tone and texture. Use PM before moisturizer. 1 fl. oz. **625-355**  
reg. \$45  
**\$26.99**

**Anew Ultimate Supreme Dual Elixir**  
A superior serum with a luxurious blend of oils. Visibly smooths and firms. See a dramatic difference in even advanced signs of aging. Serum/Oil, .67 fl. oz. each. **588-421**  
reg. \$60  
**\$38.99**



**Anew Ultimate Supreme Eye Balm**  
Infused with squalane, sunflower seed oil and antioxidant vitamin E. Moisturizing formula. Wear alone or under makeup. 0.1 oz. net wt. **625-340**  
reg. \$45  
**\$26.99**



**PLATINUM / POWER SERUM / TRY-IT SIZES**



**Anew Power Serum**  
Visibly improves wrinkles, radiance, firmness and texture. Use AM and PM after cleansing, as your treatment before moisturizing. 1 fl. oz. **417-187**  
reg. \$45  
**\$26.99**

**Try-It Sizes!**

Each, .5 oz. net wt.  
reg. \$15  
**\$8.99 each**

**Ultimate Multi-Performance Night Cream**  
**626-222**

**Platinum Day Cream Broad Spectrum SPF 25**  
**626-199**

**Platinum Night Cream**  
**626-127**



Powerful peptides help boost collagen production for a visible lift and more youthful look.

**Anew Platinum Age Delay Serum**  
With an innovative antioxidant technology containing niacinamide (vitamin B3) and panthenol (pro-vitamin B5) plus collagen-stimulating peptides. Use AM and PM before moisturizer. 1 fl. oz. **625-609**  
reg. \$45  
**\$26.99**



**NEW**

**Isa Knox LXNEW Ultimate Rejuvenating Multi-Balm Stick**  
With peony extract, plus a firming complex featuring castor oil, moringa and argan oil. Apply to forehead, eyes and neck, or anywhere you want extra care. .24 fl. oz. **267-593 reg. \$24 \$19.99**



**Isa Knox LXNEW Ultimate Rejuvenating Serum**  
With paeonol and ceramides, visibly improves elasticity, radiance and skin texture, and reduces the appearance of wrinkles. 1.35 fl. oz. **756-624 reg. \$56 \$44.99**



**Isa Knox LXNEW Ultimate Rejuvenating Day Cream**  
With paeonol, visibly reduces wrinkles and improves the look of elasticity, radiance and skin texture. With nutmeg to help visibly even skin tone. 1.7 fl. oz. **351-892 reg. \$50 \$39.99**



**Isa Knox LXNEW Ultimate Rejuvenating Eye Serum**  
Infused with paeonol and niacinamide to help visibly reduce fine lines around the eye area and depuff under-eye bags. 1 fl. oz. **567-177 reg. \$50 \$39.99**



**Isa Knox LXNEW Ultimate Rejuvenating Dual Night Cream**  
With paeonol and macadamia oil. Volume Cream: Rice bran extract helps visibly plump skin. Firming Cream: Helps boost collagen and elastin. Each, .85 fl. oz. **564-015 reg. \$50 \$39.99**



With glossy oil for silky-smooth lips.

**Isa Knox LXNEW Ultimate Rejuvenating Tinted Lip Balm**  
Wear alone or over lipstick. Each, .12 oz. net wt. Red **010-452** Pink **061-785** reg. \$25 **\$19.99**



**Isa Knox LXNEW Platinum Sculpting Day Cream**  
Infused with moisturizing hibiscus extract and smoothing ceramide. Visibly tightens facial contours. 1.7 fl. oz. **318-845 reg. \$50 \$39.99**



**Isa Knox LXNEW Platinum Sculpting Oil Serum**  
Hibiscus extract-infused serum, with collagen-boosting peptides and rejuvenating antioxidants. Skin looks firmer and more lifted. 1.35 fl. oz. **318-720 reg. \$56 \$44.99**



**Isa Knox LXNEW Platinum Sculpting Eye Cream**  
With hibiscus extract, panthenol and antioxidants. Eye area looks firmer. .84 fl. oz. **318-883 reg. \$50 \$39.99**



**Isa Knox LXNEW Platinum Sculpting Neck and Chest Cream**  
With hibiscus extract, ceramide, shea butter, panthenol and squalane. Neck and chest look smoother and lifted. 1.7 fl. oz. **548-069 reg. \$50 \$39.99**



**Isa Knox LXNEW Platinum Sculpting Night Cream**  
With firming hibiscus extract, ceramide, squalane and shea butter. Skin looks firmer, smoother and more defined. 1.7 fl. oz. **318-850 reg. \$50 \$39.99**



**FREE** Try-It Sizes: LXNEW Ultimate Day Cream and Serum with any LXNEW Ultimate or Platinum purchase, page 36. Limited quantities.

**NEW**

**Mission Luxereve Lotion**  
Lightweight hydration ideal for normal skin type. Improves the appearance of elasticity and firmness, and helps even tone and texture. Use AM/PM, after Mission Luxereve Serum. In AM, follow with sunscreen. 3.77 oz. net wt. **713-459 reg. \$95 \$80**



**Mission Luxereve Cream**  
Perfect for dry skin. Enriched with luxurious oils and other moisturizing ingredients, for a more youthful, sculpted appearance. Use AM/PM, after Mission Luxereve Serum. In AM, follow with sunscreen. 1.76 oz. net wt. **635-740 reg. \$350 \$280**



**Mission Luxereve Serum**  
A deluxe regenerating serum formulated to help boost skin elasticity and firmness. Use AM/PM, after Mission Luxereve Essence and before moisturizing with Mission Luxereve Cream. 1.01 fl. oz. **635-754 reg. \$225 \$180**



**Mission Luxereve Eye Cream Set**  
Anti-aging eye care set includes:  
• **Eye Cream** Helps visibly restore firmness and elasticity around eyes. Use with Eye Massagers. .53 oz. net wt.  
• **Rose Quartz Eye Massagers**  
Set of natural stone massagers to help eye area look refreshed. **779-996 reg. \$188 \$150 the set**



**LIMITED-EDITION Mission Luxereve Foaming Wash Set**  
Deluxe set includes:  
• **Mission Luxereve Foaming Wash** (full size) Preps skin for the Mission Luxereve regimen. 5 fl. oz.  
• **Mission Luxereve Essence** (try-it size) .67 fl. oz. **779-518 reg. \$81 \$65 the set**



**Mission Luxereve Regimen Trial Kit**  
Deluxe skin care collection includes try-it size of new lotion, plus favorite mini sizes:  
• **Try-it-size Serum** .23 fl. oz.  
• **NEW! Try-it-size Lotion** .67 fl. oz.  
• **Try-it-size Foaming Wash** .5 fl. oz.  
• **Try-it-size Cream** .17 oz. net wt. **127-930 reg \$34 \$28 the kit**



**buy these 2  
for \$34.99:**

belif the true serum  
resurfacing PHA/AHA 10%  
1.69 fl. oz.

The Solution Advanced Firming Mask  
Single mask. .70 fl. oz.

**and get this  
FREE:**

Try-It Size Anew Vitamin C  
Illuminating Priming Moisturizer  
.23 fl. oz.

**OVER \$58 VALUE**  
463-814



**BRIGHTEN & NOURISH SET**

Isa Knox LXNEW Clean  
Nourishing Cream Cleanser  
5 fl. oz.

Anew Vitamin C  
Illuminating Body Serum  
6.7 fl. oz.

Silicone Glove  
Protective Hand Cream  
3.4 fl. oz.

**3-PIECE SET**  
**\$22.99**  
**\$52 VALUE**  
562-558



**CLEANSING & SOOTHING SET**

Jeju Volcanic Lava 3-Step  
Impurity-Removing Nose Strip Kit  
Includes three strips.

Herb Day 365 Master Blending Facial  
Foaming Cleanser - Aloe & Green Tea  
5.7 fl. oz.

belif the true cream aqua bomb aloe  
1.69 fl. oz.

**3-PIECE SET**  
**\$29.99**  
**OVER \$49 VALUE**  
817-710



**ISA KNOX LXNEW PLATINUM  
SCULPTING SET**

Isa Knox LXNEW Platinum  
Sculpting Oil Serum  
1.35 fl. oz.

Isa Knox LXNEW Platinum  
Sculpting Day Cream  
1.7 fl. oz.

**2-PIECE SET**  
**\$49.99**  
**\$106 VALUE**  
617-202



**RICE COLLECTION & HAND CREAM SET**

Rice & Ceramide Cream  
1.69 fl. oz.

Rice & Ceramide Toner  
5 fl. oz.

Rice & Ceramide Emulsion  
5 fl. oz.

Silicone Glove  
Protective Hand Cream  
3.4 fl. oz.

**4-PIECE SET**  
**\$18.99**  
**OVER \$31 VALUE**  
814-840



**ISA KNOX LXNEW ULTIMATE  
REJUVENATING SET**

Isa Knox LXNEW Ultimate  
Rejuvenating Serum  
1.35 fl. oz.

Isa Knox LXNEW Ultimate  
Rejuvenating Day Cream  
1.7 fl. oz.

**2-PIECE SET**  
**\$49.99**  
**\$106 VALUE**  
617-308



## CLINICAL Revitalize & Reveal / Collagen Booster

**Isa Knox Anew Clinical Revitalize & Reveal Intensive Peel**  
An intensive resurfacing peel similar to pro acid peels. With AHA and PHA. 1 fl. oz. **780-025** reg. \$45 **\$27.99**



**Isa Knox Anew Clinical Revitalize & Reveal Resurfacing Lotion for Body**  
Exfoliates with gentle yet effective AHA lactic acid. Moisturizes with shea butter. 5 fl. oz. **390-785** reg. \$34 **\$19.99**



**Isa Knox Anew Clinical Collagen Booster Rejuvenating Serum Ampoules**  
Powerful peptide blend boosts natural production of collagen. Capsulated single-use ampoules keep formula fresh and potent. Vegan formula. 60 ampoules, .008 fl. oz. each. **803-077** reg. \$62.50 **\$49.99**



**Isa Knox Anew Clinical Collagen Booster Microneedling Polisher**  
At-home skin-resurfacing alternative to micro-dermabrasion and micro-needling procedures. Visibly diminishes pores, fine lines and wrinkles. Skin looks smoother and more radiant. Vegan formula. 1.7 fl. oz. **798-592** reg. \$34 **\$19.99**



## CLINICAL Line Eraser / Boosters

**Isa Knox Anew Clinical Line Eraser with Retinol [1.0%] Advanced Retinol Serum**  
Our highest dose of retinol, the #1 wrinkle-fighting ingredient recommended by dermatologists. High-performance serum dramatically reduces the appearance of fine lines, wrinkles and dark spots. 1 fl. oz. **390-751** reg. \$50 **\$39.99**



**100% showed clinical improvement** of fine lines and wrinkles in one week, with increased results over time.

**Isa Knox LXNEW Clinical Booster Microbiome Balance**  
Visibly reduces redness in 15 minutes so skin looks healthier. 1 fl. oz. **727-978** reg. \$40 **\$23.99**

**Isa Knox LXNEW Clinical Booster Moisture Lock**  
Instant hydration that lasts for 72 hours. 1 fl. oz. **727-982** reg. \$40 **\$23.99**

**Isa Knox LXNEW Clinical Booster Pore Perfector**  
Visibly reduces pores and blemishes in 15 minutes. 1 fl. oz. **727-963** reg. \$40 **\$23.99**



## SOLUTIONS / AVON CARE

**Solutions Anti-Aging Cream**  
Moisturizing formula works to visibly smooth the appearance of fine lines and wrinkles. 1.7 fl. oz. **906-681** reg. \$13 **\$6.99**



**Avon Care Silicone Glove Protective Hand Cream**  
Lasting protection from dryness. 3.4 fl. oz. **048-660** reg. \$6 **\$2.69**



**ANEW VITAMIN C**

**Anew Vitamin C Illuminating Body Serum**

Light-reflecting pigments leave skin looking luminous. 6.7 fl. oz. **157-071** reg. \$34 **\$19.99**



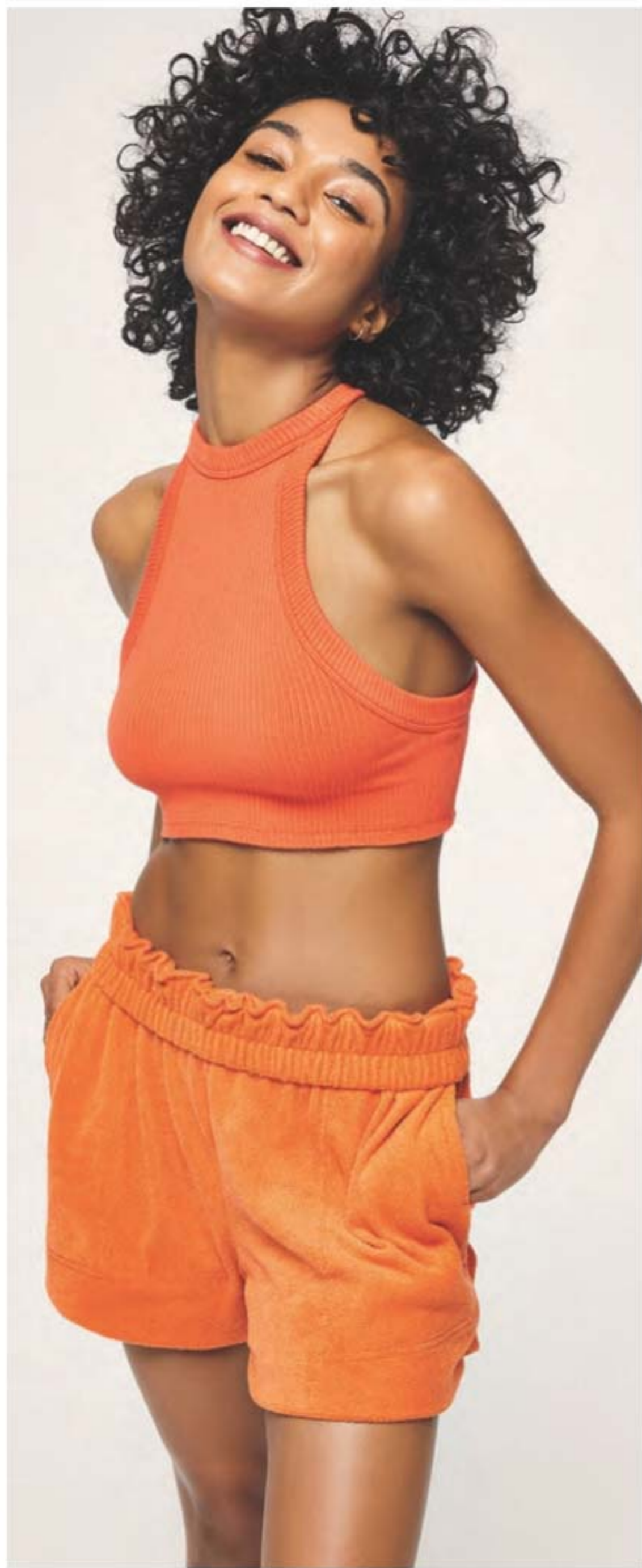
**Anew Vitamin C Brightening Eye Cream**

Visibly reduces dark circles. Leaves under-eye area looking brighter and more even-toned. .5 fl. oz. **868-512** reg. \$34 **\$18.99**



**Anew Vitamin C Overnight Radiant Mask**

Visibly improves texture and boosts radiance. Apply after cleansing, treating and moisturizing. 1.7 fl. oz. **157-086** reg. \$36 **\$19.99**



**NEW**

**Anew Vitamin C Nourishing Body Butter**

With hydrating shea butter and sodium PCA, enriched with niacinamide, helps restore radiance with vitamins C and E to defend against free radical damage. Uplifting fruity-floral and citrus scent. 7.8 fl. oz. **443-767** reg. \$32 **\$17.99**



**NEW**

**Anew Vitamin C Glow Body Scrub**

Sugar-based formula, with pineapple and papaya enzymes and coffee seed extract, exfoliates dry, dull skin, while a blend of sunflower seed oil and sweet almond oil replenishes moisture. Refreshing citrus scent. 9 oz. net wt. **443-752** reg. \$36 **\$19.99**

SKIN CARE

**ANEW VITAMIN C**

**Anew Vitamin C Brightening Serum**

Skin is visibly energized and brightened with the power of 10% pure vitamin C. 1 fl. oz. 936-406 reg. \$44 **\$24.99**



**Anew Vitamin C Illuminating Priming Moisturizer**

With natural citrus extracts. Wear alone or under makeup. 1.7 fl. oz. 868-508 reg. \$34 **\$18.99**



**Anew Vitamin C Warming Peel**

With vitamin C flakes and natural seeds, exfoliates with a warming sensation. 3.4 fl. oz. 936-425 reg. \$27 **\$15.99**



**Anew Vitamin C Antioxidant Lip Treatment**

Nourishes lips with vitamins C and E. .13 oz. net wt. 784-547 reg. \$14 **\$7.99**



**Anew Vitamin C Overnight Lip Mask**

Leave-on lip mask, with vitamin C and shea butter, leaves lips looking smoother and more supple overnight. .7 oz. net wt. 157-689 reg. \$34 **\$14.99**



**ISA KNOX ANEW SOLAIRE**

**NEW**

**Isa Knox Anew Solaire Everyday Mineral Face Protection Cream Broad Spectrum SPF 50**

Lightweight formula with zinc oxide. Suitable for sensitive skin. Water-resistant (40 minutes). 1.7 fl. oz. 437-143 reg. \$29 **\$22.99**



**NEW**  
100% mineral sunscreen with no white cast!

SKIN CARE



**Isa Knox Anew Solaire Everyday Face Protection Lotion Broad Spectrum SPF 50**  
Creamy lotion formula. Wear alone or under makeup. 1.7 fl. oz. 154-914 reg. \$29 **\$22.99**



**Isa Knox Anew Solaire Active Face & Body Protection Lotion Broad Spectrum SPF 50**  
Water-light formula glides on smoothly all over face and body. 2.7 fl. oz. 154-948 reg. \$31 **\$24.99**



**SPF 50**  
Avon's highest  
sunscreen  
protection

**Anew Hydra Fusion 1.5% Hyaluronic Acid Serum**  
With three different molecular sizes of HA that reach multiple layers of skin's surface to visibly plump skin. 1 fl. oz. **568-408 reg. \$44 \$24.99**

**Anew Hydra Fusion Gel Cream**  
Skin appears smoother, refreshed and plumped with lasting hydration. 1.7 oz. net wt. **283-736 reg. \$34 \$18.99**

**Anew Hydra Fusion Cleansing Micellar Water**  
Gently lifts dirt, oil and makeup while boosting hydration. No need to rinse off. 10.1 fl. oz. **284-933 reg. \$14 \$8.99**

**Anew Hydra Fusion Daily Beauty Defense Broad Spectrum Sunscreen Lotion SPF 50**  
Featherlight feel. Use after moisturizing. 1.7 fl. oz. **167-026 reg. \$34 \$18.99**

normal, dry, combination and oily skin  
**2-in-1 Exfoliating Cleansing Balm**  
Melts away makeup and impurities. Enriched with panthenol (vitamin B5) and bamboo stem powder. Use with included spatula. 3.5 oz. net wt. **718-006 reg. \$30 \$24.99**



normal to dry skin  
**Nourishing Cream Cleanser**  
Infused with panthenol (vitamin B5), rosemary and soapwort extracts. Gently removes impurities and makeup while restoring moisture. 5 fl. oz. **717-990 reg. \$12 \$9.99**



oily to normal skin  
**Soothing Whipped Oil Cleanser**  
Mild amino acid-based ingredients derived from coconut eliminate impurities and excess oil without leaving any residue. Soothes with panthenol (vitamin B5) and aloe. 5 fl. oz. **718-025 reg. \$16 \$12.99**



normal, dry and combination skin  
**Balancing Gel Cleanser**  
Gel to foam. With moisturizing panthenol (vitamin B5). Mild amino acid-based ingredients derived from coconut help gently remove oil and impurities while rebalancing skin. 5 fl. oz. **718-010 reg. \$12 \$9.99**





**Farm Rx Pineapple Plus Brightening Jelly Serum**  
Helps improve dull, dry skin and reduce the appearance of fine lines, wrinkles and pores. Skin looks radiant. 1 fl. oz. 027-440 reg. \$44 **\$32.99**

**Farm Rx Pineapple Plus Instant Glow Toner**  
Revitalizing toner helps visibly minimize pores. Use AM and PM, after cleansing. 5 fl. oz. 027-382 reg. \$25 **\$17.99**

*\*Clinically shown to significantly improve the appearance of skin brightness after two weeks.*  
All vegan, hypoallergenic and suitable for sensitive skin.

Skin looks brighter in two weeks\*

87% natural

**Farm Rx Amazon Berry Boost Smoothing & Firming Body Cream**  
With moisturizing and nourishing Brazil nut oil plus murumuru and cupuaçu butters. 5 fl. oz. 027-655 reg. \$25 **\$17.99**

86% natural

**Farm Rx Super Greens Cooling Gel**  
Lightweight moisturizer helps soothe and cool skin. Apply a thicker layer, after serum, as a mask to hydrate overnight as needed. 3.04 fl. oz. 354-227 reg. \$37 **\$27.99**

86% natural

**Farm Rx Green Goddess Facial Oil**  
100mg broad spectrum CBD. Suitable for sensitive skin. Rich in omega acids and vitamin E. Use AM/PM, after cleansing and serum. Fragrance-free. 1 fl. oz. 287-507 reg. \$50 **\$32.99**

99% natural

**Farm Rx Bakuchiol Serum**  
Concentrated lightweight oil-textured formula penetrates skin's surface to target fine lines, wrinkles and dullness without irritation. 1 fl. oz. 247-417 reg. \$44 **\$32.99**

98% natural

**Farm Rx Super Greens Nourishing Cleansing Balm**  
Helps boost moisture barrier as it dissolves makeup and impurities. For normal, dry, combination, oily and sensitive skin types. 3.03 fl. oz. 516-944 reg. \$41 **\$30.99**

88% natural

**Farm Rx Green Goddess High Dose Serum**  
300mg CBD. Skin feels softer and soothed. Use AM/PM after cleansing, before CBD cream or facial oil to visibly boost results. 1 fl. oz. 338-031 reg. \$50 **\$37.99**

95% natural

**Farm Rx Bakuchiol Cream**  
Moisturizing cream with bakuchiol, a plant-based alternative to retinol that you can use during the day. Visibly reduces wrinkles. Vegan. Hypoallergenic. Suitable for sensitive skin. 3.04 fl. oz. 004-044 reg. \$44 **\$32.99**

92% natural

**Farm Rx Bakuchiol Eye Cream**  
Visibly reduces dark circles, fine lines and wrinkles without irritating the delicate eye area. 1 fl. oz. 565-834 reg. \$37 **\$27.99**

90% natural

**Farm Rx Super Greens Multivitamin Moisture Cream**  
Locks in essential nourishing moisture. Use daily after cleansing, serums and treatments. 3.04 fl. oz. 314-141 reg. \$37 **\$27.99**

**Farm Rx Green Goddess Cream**  
100mg CBD. Helps soothe and visibly reduce redness. Use AM/PM after serum. For added radiance, follow with Facial Oil. 3.04 fl. oz. 338-027 reg. \$44 **\$32.99**

95% natural

**FARM RX**

Special Trial Kit  
Trousse d'essai spéciale

Vegan skin care with natural plant-based ingredients for healthy-looking skin.  
Soins de la peau végétaliens composés d'ingrédients naturels à base de plantes pour une peau d'apparence saine.

**NEW**

**LIMITED EDITION Farm Rx Preview Kit**  
Four try-it sizes of new full sizes coming in Campaigns 14 and 18:

- Pineapple Plus Radiance Boosting Mask, .33 fl. oz.
- Amazon Berry Boost Moisturizing & Firming Mask, .33 fl. oz.
- Super Greens Refreshing Eye Cream, .17 fl. oz.
- Amazon Berry Boost Lifting & Firming Serum, .17 fl. oz.

224-930 reg. \$19 **\$12.99**

**Farm Rx Super Greens Refreshing Gel Cleanser**  
With soothing aloe. Convenient pump. Eco-friendly packaging and glass bottle. Use AM/PM. 8.11 fl. oz. 913-049 reg. \$25 **\$17.99**

87% natural

**Farm Rx Super Greens Refreshing Gel Cleanser Refill\*\***  
Includes two refills. 16.9 fl. oz. 913-053 reg. \$37 **\$27.99**

\*\*Not shown.

**DOUBLE CLEANSE** for optimal results!  
 Start with a new Cleansing Lotion or Oil.  
 Follow with another Rice Water cleanser.

**NEW**

**Rice Water Bright Light Facial Cleansing Oil**

Removes every trace of makeup and gently cleanses impurities on skin. With jojoba oil and rice water extract, known to visibly brighten and moisturize skin. 5 fl. oz. **720-199** reg. \$14 **\$11.99**

**Rice Water Bright Facial Cleansing Lotion**

Rice bran oil helps brighten skin. Gently removes makeup and impurities. 6.76 fl. oz. **720-184** reg. \$12 **\$9.99**



**A. Rice Water Bright Foaming Cleanser**

Light whipped foam. Cleanses and moisturizes. With rice water and soapwort extract. Skin looks clear and bright. 10 fl. oz. **508-093** reg. \$13 **\$11**

**B. Rice Water Bright Rice Bran Gentle Exfoliating Cleanser**

Daily scrub with organic rice bran powder, rice bran oil and hydrated silica. 10 fl. oz. **376-865** reg. \$15.99 **\$12.99**

**C. Rice Water Bright Cleansing Facial Wipes**

Great on the go. With rice extract to moisturize while cleansing. Removes eye makeup. 50 sheets. **508-108** reg. \$11 **\$9**

**D. Rice Water Bright Facial Massage Cream**

With rice water, enriched with vitamins, ceramide and minerals. Use after cleansing 2-3 times a week. 6.7 fl. oz. **450-200** reg. \$24 **\$19**



**Rice Water Bright Mild Cleansing Water**

Removes makeup and impurities with micelles, so no need to rinse off! Use with cotton pad. 16.9 fl. oz. **288-360** reg. \$14.40 **\$12**

**FREE** Rice Water Bright Foaming Cleanser with any \$20 Face Shop purchase, pages 50-57. Sold separately on page 51. Limited quantities.



## THE FACE SHOP Rice & Ceramide

### Rice & Ceramide Moisturizing Collection

With eco-friendly mineral-enriched exfoliating rice extract and rice bran. With ceramide to help skin retain moisture.

#### A. Toner

A balancing and moisturizing toner. AM and PM, use after cleansing, before serum and moisturizer. 5 fl. oz.

124-142  
reg. \$8.25  
\$6.80

#### B. Emulsion

Replenishes moisture instantly and for hours. Semi-liquid consistency. AM and PM, use after cleansing or toning and before serum or moisturizer.

5 fl. oz.  
876-976  
reg. \$8.25  
\$6.80

#### C. Cream

Moisturizing cream that helps give skin a visibly translucent and healthy glow. AM and PM, use after cleansing, toning and serum.

1.69 fl. oz.  
124-635  
reg. \$9.25  
\$7.60



### Rice & Ceramide Trial Kit

Moisturizing skin care set replenishes and refreshes your look. Try all three, or to use as a complete travel kit. Three-piece boxed mini sizes. Includes: Toner, 1.15 fl. oz.; Emulsion, 1.15 fl. oz.; Cream, 0.34 fl. oz.

543-617 reg. \$8.75  
\$7.20 the kit

## THE FACE SHOP Calendula Essential Moisture

### Calendula Essential Moisture

Daily skin care for irritated and sensitive skin. With moisturizing calendula extract, a soothing herb complex, and the ultimate hydrator, hyaluronic acid.



#### A. Serum

A moisturizing and soothing serum that helps calm skin and enhance hydration. 1.35 fl. oz.

980-533 reg. \$13.50  
\$11.20

#### B. Eye Cream

A lightweight, non-greasy, moisturizing and soothing eye cream.

.67 fl. oz.  
409-823 reg. \$12.50  
\$10.40

#### C. Cream

A moisturizing cream that instantly hydrates while it gently helps soothe dry, itchy, irritated skin.

1.69 fl. oz.  
465-400 reg. \$13.50  
\$11.20





**Jeju Aloe Fresh Soothing Foam Cleanser**  
Gentle gel-to-foam formula hydrates as it cleanses. With soothing aloe, moisturizing panthenol and other refreshing herbal extracts such as cica, camellia leaf, licorice root and rosemary. 5 fl. oz. **450-090**  
reg. \$11.99  
**\$9.99**

**Jeju Volcanic Lava 3-Step Impurity-Removing Nose Strip Kit**  
Three-step kit includes three strips to help open pores, soften sebum and refine skin.  
**TO USE:** After cleansing, use three strips in each different step as directed.  
**411-519**  
reg. \$2  
**\$1.60**



**Jeju Aloe Fresh Soothing Mist**  
With 90% aloe vera extract. Oil-free. Instantly soothing and cooling. After cleansing, spray wherever skin feels dry. 4.4 fl. oz. **925-379**  
reg. \$16  
**\$12.99**



**Jeju Aloe Fresh Soothing Gel**  
With 95% aloe vera extract, instantly hydrates and soothes dry, sensitive skin. Infused with other soothing herbal extracts, like chamomile, lemon balm, rosemary and lavender. For face and body. 10.1 fl. oz. **984-304** reg. \$8  
**\$6.99**



**Jeju Aloe Fresh Ice Soothing Gel**  
3-in-1 gel with aloe vera extract. Use as moisturizer, soothing after-sun care or facial pack. Refrigerate for enhanced cooling. Apply to dry, sensitive, irritated areas of face and body. 10.1 fl. oz. **925-402** reg. \$11  
**\$8.99**



**Herb Day 365 Amino Acid Facial Foaming Cleanser**  
Vegan mild hypoallergenic cleanser with cica. Formulated for optimal pH balance. For a moisturized and comforted feeling without tightness, even after cleansing. Each, 5.7 fl. oz.  
**reg. \$11.50**  
**\$9.60 each**

**Peony**  
Helps visibly boost skin clarity, and helps hydrate and soothe skin.  
**546-229**

**Aloe**  
Helps moisturize and soothe dry, itchy skin.  
**544-393**

**Herb Day Cleansing Tissue**  
Removes makeup and impurities. With soapwort, lady's mantle, lily, chamomile and cornflower.  
20 sheets. **280-670**  
reg. \$2  
**\$1.60**  
70 sheets. **134-450**  
reg. \$5.75  
**\$4.80**



**Herb Day 365 Master Blending Facial Foaming Cleanser**  
Formulated with naturally derived herbal and fruit extracts, and coconut-derived moisturizing ingredients. Free of synthetic colorants and parabens. Each, 5.7 fl. oz. **reg. \$5.25**  
**\$4.40 each**



**Mung Bean & Mugwort**  
For trouble-prone skin. Rich in essential minerals to help keep skin visibly smooth and clean.  
**135-093**



**Lemon & Grapefruit**  
For oily skin. Helps to remove impurities and makeup residue. Skin feels refreshed.  
**134-666**



**Aloe & Green Tea**  
For dry skin. Skin feels hydrated and soothed, even after cleansing.  
**134-647**

**FREE** Rice Water Bright Foaming Cleanser with any \$20 Face Shop purchase, pages 50-57. Sold separately on page 51. Limited quantities.



**The Face Shop Rich Hand V Special Care Hand Mask**

Coated masks contain nourishing lotion with sunflower seed oil and urea for instant moisturization. Two disposable masks, one for each hand. **541-724** reg. \$4 **\$3**



**The Face Shop Smile Foot Exfoliating Cream**

A unique 2-in-1 daily foot exfoliating cream that removes dead skin cells as it soothes skin. With naturally moisturizing urea, which leaves feet feeling soft and hydrated. 4 fl. oz. **535-426** reg. \$11.99 **\$9.99**



**The Face Shop Smile Foot Mask**

Disposable foot mask, with naturally moisturizing urea, shea butter and collagen, for baby-soft feet! Refreshes with peppermint oil. Contains two masks, one for each foot. **535-957** reg. \$4.79 **\$3.99**



**The Face Shop The Solution Advanced Hydrating Face Mask**

With hyaluronic acid, which holds 1,000 times its weight in water to help skin look youthfully plumped and baby-soft. **624-966** reg. \$3 **\$2.50**



**The Face Shop The Solution Advanced Brightening Face Mask**

With pearl powder (a beauty secret of Cleopatra), for a healthy-looking, luminescent glow. **624-970** reg. \$3 **\$2.50**



**The Face Shop The Solution Advanced Pore Care Face Mask**

With tannic acid, a natural astringent that helps reduce shine and visibly shrink pores. **624-947** reg. \$3 **\$2.50**



**The Face Shop The Solution Advanced Firming Face Mask**

With marine (hydrolyzed) collagen, helps reduce the appearance of wrinkles and visibly restore firmness and radiance. **624-932** reg. \$3 **\$2.50**



**The Face Shop The Solution Advanced Nourishing Face Mask**

With antioxidant-enriched propolis extract (tree sap, bee food and beeswax) to restore the look of healthy vitality to tired skin. **624-951** reg. \$3 **\$2.50**



Give your hands a moment of scented bliss



**NEW**

**Daily Moment Vegan Hand Cream**  
Deeply moisturizing daily vegan hand cream with a long-lasting scent. Eco-friendly and vegan-certified. Each, 1.0 fl. oz. reg. \$4 **\$3.29 each**

**1—Sunrise Bedroom**  
Bergamot, lavender and cedarwood. **741-940**

**2—Morning Florist**  
Lemon, Bulgarian rose and violet leaf. **741-955**

**3—Noon Park**  
Grapefruit, hyacinth and iris. **754-636**

**4—Sunset Rooftop**  
Pear, rose and patchouli. **757-931**

**5—Midnight Street**  
Cassis, rose and amber. **762-334**

**6—Dawn Attic**  
Orange blossom, pimento and vetiver. **762-353**

**FREE** Rice Water Bright Foaming Cleanser with any \$20 Face Shop purchase, pages 50–57. Sold separately on page 51. Limited quantities.





explosive hydration...  
all over!



belif believe in truth **aqua bomb**  
Aqua bomb makeup removing cleansing balm  
3-step texture-changing cleanser? **Yes!**  
Effectively removes makeup and impurities? **Yes!**  
Moisturizes and smooths skin after cleansing?  
Dermatologically tested  
With Napiers original formula, Napiers aqua formula  
100 ml / 3.3 fl. oz. U.S.

**aqua bomb  
makeup removing  
cleansing balm**  
For dryness, dullness  
& uneven texture  
Gently removes all traces  
of makeup in one step.  
Smooth and refreshing like  
sherbet. With lotus flower and  
marshmallow root, herbs known  
to help boost moisture and  
radiance. No oily residue. For a  
double cleanse, follow with  
aqua bomb jelly cleanser.  
3.3 fl. oz. **443-179 reg. \$46**  
**\$38**

Enjoy these special prices and  
exclusive offers only when you  
shop with an Avon Representative.

**BELIEVE IT!**  
**3 steps in 1**  
**balm → cream → oil**  
melts away makeup and impurities  
while cleansing skin with hydration

ALL NEW

**BELIEVE IT!**

**93%** of people agreed  
skin appears smoother\*



belif believe in truth  
**Aqua bomb  
hydrating body moisturizer**  
With skin brightening niacinamide 1%  
Instantly hydrates with a  
soft, lightweight gel texture? **1%**  
Leaves skin feeling  
smooth, not sticky? **1%**  
Mineral oils **0%\***  
Synthetic  
fragrances **0%\***  
Synthetic  
organic dyes **0%\***  
Animal origin  
ingredients **0%\***  
Dermatologically tested  
With 2 Napiers formulas,  
hyaluronic acid, niacinamide  
\*The numbers represent percentage  
of ingredients added



**aqua bomb  
hydrating body moisturizer**  
For dryness, dullness & uneven skin tone  
A favorite lightweight gel moisturizer,  
with lady's mantle, an herb known for its  
antioxidant and soothing benefits—now  
for your body. Intense hydration  
for visibly firmer, clearer and brighter  
skin. Silky finish. For all skin types.  
10.13 fl. oz. **443-040 reg. \$36**  
**\$30**

\*Based on a consumer study after one week of use.

NEW

moisture to the max!



- LIMITED EDITION**  
**belif max out on moisture kit**  
 Includes five must-have minis:
- **NEW aqua bomb hydrating body moisturizer** 1.01 fl. oz.
  - **NEW aqua bomb makeup removing cleansing balm** .3 fl. oz.
  - **the true cream aqua bomb** .33 fl. oz.
  - **aqua bomb jelly cleanser** 1.01 fl. oz.
  - **moisturizing eye bomb** .16 fl. oz.
- Comes in a splashy, fun-looking box.  
 713-717 reg. \$28  
**\$23**  
**5-piece set**

Enjoy these special prices and exclusive offers only when you shop with an Avon Representative.

**the true cream aqua bomb aloe**  
*For redness, irritation & dryness*  
 Moisturizing gel-cream with aloe vera extract to instantly soothe skin, plus hydrating hyaluronic acid and smoothing vitamin E. 1.69 fl. oz.  
**788-284 reg. \$42**  
**\$38**

**the true cream moisturizing bomb**  
*For dryness, loss of elasticity & firmness*  
 Creamy, cushiony, whipped texture, envelops skin with intense moisture.  
 Full size, 1.68 fl. oz.  
**948-463 reg. \$42**  
**\$38**  
 Try-it size, .84 fl. oz.  
**498-139 reg. \$24**  
**\$22**

**the true cream aqua bomb**  
*For dryness, dullness & uneven texture*  
 Water-based refreshing gel-cream cools and hydrates.  
 Full size, 1.68 fl. oz.  
**235-709 reg. \$42**  
**\$38**  
 Try-it size, .84 fl. oz.  
**235-713 reg. \$24**  
**\$22**

**BELIEVE IT!**  
**70%**  
**increase in hydration\***

\*Based on a clinical study.



**BELIEVE IT!**  
**26 hours**  
**of intense hydration\***



**BELIEVE IT!**  
**96%**  
 of people said  
 their skin felt  
 hydrated  
 after cleansing\*

**aqua bomb jelly cleanser**  
 For dryness, dullness  
 & uneven texture  
 Jelly to foam. Amino  
 acids and glycerin-based  
 cleansing agents gently  
 cleanse. 5.41 fl. oz.  
**445-353 reg. \$35**  
**\$30**

\*Based on a consumer study  
 after a week of use.



**BELIEVE IT!**  
**26 hours**  
 of moisture  
 around  
 the eye area\*\*

**moisturizing eye bomb**  
 For dryness, loss of elasticity & firmness  
 Lightweight, refreshing eye cream cools on  
 contact. Helps keep eye area looking firm,  
 resilient and smooth. .84 fl. oz.  
**445-478 reg. \$53**  
**\$48**

\*\*Based on a clinical study.



**the true serum  
 resurfacing  
 PHA/AHA 10%**  
 For dullness &  
 uneven tone & texture  
 Exfoliators help  
 visibly improve tone  
 and texture. With  
 energizing honeysuckle.  
 Apply after cleansing,  
 before any belif  
 moisturizer. 1.69 fl. oz.  
**927-769 reg. \$55**  
**\$45**

**aqua bomb  
 hydrating toner**  
 For an extra boost  
 of hydration  
 Lightweight water-  
 based toner, with  
 hyaluronic acid,  
 honeysuckle flower  
 extract and baobab  
 tree seed extract.  
 Leaves skin looking  
 soft and smooth with  
 a healthy-looking glow.  
 Use after cleansing,  
 before serum and  
 moisturizer. 6.75 fl. oz.  
**952-974 reg. \$36**  
**\$30**



**aqua bomb  
 sleeping mask**  
 For dull, dry,  
 fatigued skin  
 Unique  
 jelly-pudding  
 texture! Skin  
 feels replenished  
 overnight.  
 Explosive  
 hydration  
 for smoother  
 skin and a  
 healthy glow.  
 2.53 oz. net wt.  
**514-717**  
**reg. \$42**  
**\$38**



**re:tune** INNER BEAUTY\*

Feel good on the inside so you can look great on the outside.



**re:tune  
 Inner Beauty  
 Hair, Skin &  
 Nail Health**  
 Promotes a  
 healthy response  
 to skin stressors  
 while helping  
 build healthy hair,  
 skin and nails.\*  
 60 tablets.  
**396-908**  
**reg. \$42**  
**\$33**



**re:tune  
 Inner Beauty  
 Clear Complexion**  
 Supports a  
 visibly clear,  
 even complexion.  
 Helps balance  
 the gut  
 microbiome.\*  
 30 capsules.  
**123-332**  
**reg. \$36**  
**\$30**



**re:tune  
 Inner Beauty  
 Be Calm**  
 Helps enhance  
 your ability to  
 stay calm and  
 focused.\*  
 30 vegetarian  
 capsules.  
**123-567**  
**reg. \$38**  
**\$31**



**re:tune  
 Inner Beauty  
 Metabolism  
 Boost**  
 A natural, plant-  
 based energy  
 and metabolism  
 booster that  
 helps you burn  
 more calories.\*\*  
 60 vegetarian  
 capsules.  
**907-195**  
**reg. \$35**  
**\$28**



**re:tune  
 Inner Beauty  
 Hydration**  
 Supercharge your  
 water for optimal  
 hydration and more  
 energy, and to  
 boost skin health.  
 Contains electrolytes,  
 B vitamins and  
 antioxidants.\* Berry  
 flavor. 20 packets.  
**966-140**  
**reg. \$27**  
**\$22**



**re:tune Inner  
 Beauty Plant  
 Protein Powder†**  
 A delicious, non-  
 GMO plant-based  
 shake with 21  
 grams of protein.  
 Includes probiotics  
 and enzymes for  
 easy digestion.\*  
 Vegan, gluten-free,  
 soy-free, no sugar  
 added. 15 servings  
 per canister.  
 Rich Chocolate  
**332-488**  
 Creamy Vanilla  
**332-473**  
**reg. \$49**  
**\$39 each**

†Not sold in California.



**re:tune  
 Inner Beauty  
 Restful Sleep**  
 A natural, non-  
 habit-forming  
 supplement to  
 help you get  
 your beauty  
 sleep and wake  
 up refreshed.\*  
 60 vegetarian  
 capsules.  
**006-487**  
**reg. \$25**  
**\$20**



**re:tune  
 Inner Beauty  
 Collagen Booster**  
 Supports  
 healthy collagen  
 production  
 for firmer-  
 looking radiant  
 skin.\* Add one  
 scoop to water,  
 juice or coffee.  
 Unflavored.  
 2.65 oz. net wt.  
 (75 g)  
**906-901**  
**reg. \$69**  
**\$56**



**re:tune  
 Inner Beauty  
 Hunger Block**  
 Helps reduce your  
 food cravings  
 for hours.\* 60  
 vegetarian  
 capsules.  
**906-920**  
**reg. \$31**  
**\$25**



**re:tune  
 Inner Beauty  
 HydraBoost**  
 Helps boost  
 hydration and visibly  
 soften lines with  
 hyaluronic acid.\* 30  
 vegetarian capsules.  
**122-761**  
**reg. \$34**  
**\$28**

**Metabolism Boost**  
 60 capsules.  
**Hunger Block**  
 60 capsules.  
**2-PIECE SET**  
**\$26.99**  
**\$64 value**  
**825-825**



\*These statements have not been evaluated by the Food and Drug Administration. This product is not intended to diagnose, treat, cure or prevent any disease. \*\*With reduced dietary intake and exercise.





# avon pure essential oils

Use with either Avon Pure Diffuser. Not for use on skin.



**Lemon**  
Clear the air! Clean, invigorating aroma freshens stale and musty areas. .34 fl. oz. **599-133** reg. \$17 **\$14**



**Lavender**  
Calms and soothes. Helps with balance and restfulness. .34 fl. oz. **098-710** reg. \$28 **\$23**

**Eucalyptus**  
Refreshes the mind. Rejuvenates the senses. .34 fl. oz. **098-724** reg. \$21 **\$17**

**Happiness**  
Infuse the air with joy and exhilaration. With grapefruit, lemon and sweet orange. .34 fl. oz. **098-906** reg. \$21 **\$17**

**Citronella**  
Helps you enjoy the outdoors (and indoors, too). No harsh chemicals. .34 fl. oz. **598-945** reg. \$24 **\$19**

**Sweet Dreams**  
Create a serene environment for restful thoughts. With lavender and chamomile. .34 fl. oz. **098-891** reg. \$31 **\$25**

**AVON PURE SET**

**Roll-On Essential Oils Outdoor Friend**  
.34 fl. oz.

**Essential Oils Citronella**  
.34 fl. oz.

**2-PIECE SET**  
**\$29.99**  
**\$48 value**  
780-800



**Avon Pure Ceramic Aroma Diffuser**  
Premium ceramic. Whisper-quiet. Also functions as a humidifier. BPA-free plastic water reservoir. Auto shutdown on timer or when the water runs out. 6.8 fl. oz. capacity. Approx. 3 3/4" diam. x 6 3/4" H. **141-846** reg. \$71 **\$57**



**Avon Pure Diffuser**  
LED light-up diffuser with three different settings releases a fine mist of essential oil and water into the air so that you can easily fill your space with the essence of the oils. 6 1/2" H. USB connection. **915-424** reg. \$39 **\$32**



Contents not included. Essential Oils sold separately.

**Avon Pure Essential Oil Case**  
Fits up to 48 essential oils and roll-ons. Man-made material with easy maintenance. Two padded stackable trays for added protection of glass bottles. Includes handle and all-around zipper. 8 1/4" L x 6 1/8" W x 7 1/2" H. **179-470** reg. \$51 **\$41**

**AVON PURE ROLL-ON ESSENTIAL OILS**

Apply directly on skin. Instantly transform your day. Contains sweet almond oil, a carrier oil.



**De-Stress**  
With lavender and peppermint. .34 fl. oz. **098-963** reg. \$24 **\$19**



**Aches Away**  
With peppermint and rosemary leaf extract. .34 fl. oz. **100-420** reg. \$24 **\$19**



**Outdoor Friend**  
With lemon eucalyptus and lemongrass extracts. .34 fl. oz. **598-869** reg. \$24 **\$19**

**FREE** Avon Pure Roll-on Essential Oils—Outdoor Friend with any \$35 Wellness purchase, pages 63–65. Sold separately on page 65. \$24 value. Limited quantities.



*introducing*

# RÊVE EN CUBE



Explore an enchanting space where fantasy blooms,  
romance is uninhibited and true beauty comes to life.

**NEW**

**Rêve en Cube**  
**Lying on a Cloud**  
**Eau de Parfum**  
*fresh green floral*  
Feel like you are floating  
on a cloud where dreams  
and desires are fulfilled and  
magical notes envelop your  
senses. 3.4 fl. oz.  
**696-109**  
reg. \$70  
**\$59**

*Top:* Lemon, Mandarin,  
**Ethereal Freesia**

*Mid:* **Sweet Mimosa,**  
Magnolia, Jasmine,  
**Lily of the Valley**

*Dry:* Cedar, Musk



FRAGRANCE

RETURN

TO BALI

YOUR FAVE SUMMER SCENT IS BACK FOR GOOD!

**NEW**

**Far Away Bali**  
Eau de Parfum  
*fruity floral*  
1.7 fl. oz. 451-389  
reg. \$25  
**\$18.99**

*Top:* Acai Berry, Japanese Plum, Sparkling Grapefruit

*Mid:* Water Lily, Salted Tuberose, Honeysuckle

*Dry:* Sacred Woods, Musk, Golden Amber

## FAR AWAY a wanderlust for the exotic

**Far Away**  
*amber floral*  
Freesia, sheer jasmine and enticing amber.

**Original**  
Eau de Parfum  
1.7 fl. oz.  
685-712  
reg. \$25  
**\$18.99**

**Intense**  
Eau de Parfum  
1.7 fl. oz.  
931-332  
reg. \$31  
**\$25.99**



**Shimmering**  
Body Mist  
3.25 fl. oz.  
618-945  
reg. \$20  
**\$15.99**



**Hair & Body Mist**  
3.25 fl. oz.  
572-536  
reg. \$16  
**\$11.99**



**Intense Luxury**  
Body Crème  
5 fl. oz.  
806-300  
reg. \$23  
**\$18.99**



**Far Away**  
**Beyond Intense**  
*woody floral*  
Jasmine, orange blossom and tonka bean.

**Eau de Parfum**  
1.7 fl. oz.  
932-726  
reg. \$31  
**\$25.99**

**Travel Spray**  
.3 fl. oz.  
811-727  
reg. \$16  
**\$12.99**

**Luxury Body**  
Crème  
5 fl. oz.  
932-711  
reg. \$23  
**\$18.99**



**Far Away Infinity**  
*fruity floral*  
Radiant bergamot, jasmine sambac and sensual sandalwood.

**Original**  
Eau de Parfum  
1.7 fl. oz.  
318-481  
reg. \$25  
**\$18.99**

**Intense**  
Eau de Parfum  
1.7 fl. oz.  
931-495  
reg. \$30  
**\$24.99**



**Far Away Gold**  
Eau de Parfum  
*amber floral*  
Ylang-ylang, Indian jasmine and Madagascar vanilla.  
1.7 fl. oz.  
685-727  
reg. \$25  
**\$18.99**



# Haiku

**Haiku**  
*fresh green floral*

*Top: Japanese Yuzu, Sweet Pomegranate, Summer Pear*

*Mid: Muguet, Freesia, Tuberose*

*Dry: Blonde Woods, Soft Musks, Vetiver*

**Original Eau de Parfum**  
1.7 fl. oz. 601-030  
reg. \$25  
**\$18.99**

**Intense Eau de Parfum**  
1.7 fl. oz. 097-110  
reg. \$31  
**\$25.99**

**Intense Travel Spray**  
.3 fl. oz. 880-353  
reg. \$16  
**\$12.99**

**Hair & Body Mist**  
3.25 fl. oz. 572-574  
reg. \$16  
**\$11.99**

**Intense Luxury Body Crème**  
5 fl. oz. 806-239  
reg. \$23  
**\$18.99**



**HAIKU** serene. divine. elegant.

**Haiku Sacred Intense**  
*fruity floral*  
Discover a divine blend of uplifting tangerine, rose de mai and earthy driftwood, balancing the beauty of nature.

**Eau de Parfum**  
1.7 fl. oz.  
579-750  
reg. \$31  
**\$25.99**

**Luxury Body Crème**  
5 fl. oz.  
580-000  
reg. \$23  
**\$18.99**



**Haiku Kyoto Flower**  
*fresh green floral*  
Violet leaf, white peony and soft cotton musk.

**Original Eau de Parfum**  
1.7 fl. oz.  
144-352  
reg. \$25  
**\$18.99**

**Intense Eau de Parfum**  
1.7 fl. oz.  
578-811  
reg. \$31  
**\$25.99**



**Haiku Reflection**  
**Eau de Parfum**  
*fresh green floral*  
Radiant water accord, acacia blossom and amber wood.  
1.7 fl. oz.  
617-657  
reg. \$25  
**\$18.99**



Enjoy these special prices and exclusive offers only when you shop with an Avon Representative.

**Rare Pearls**  
*soft floral***Top: Shimmering Magnolia,**  
Vibrant Bergamot, Neroli**Mid: White Pepper,**  
Jasmine Petals, Freesia**Dry: Creamy Rosewood,**  
Patchouli, Sandalwood,  
Cedarmoss**Original Eau de Parfum**  
1.7 fl. oz. 933-120  
reg. \$25  
**\$18.99****Intense Eau de Parfum**  
1.7 fl. oz. 783-297  
reg. \$31  
**\$25.99****Hair & Body Mist**  
3.25 fl. oz. 572-851  
reg. \$16  
**\$11.99****Shimmering  
Body Mist**  
3.25 fl. oz. 618-911  
reg. \$20  
**\$15.99**

# Rare Pearls

Absolutely exquisite

**RARE** a treasure beyond compare**Rare Gold  
amber floral**  
Opulent notes of  
mandarin zest,  
ylang-ylang and  
golden amber.**Original  
Eau de Parfum**  
1.7 fl. oz.  
933-115  
reg. \$25  
**\$18.99****Intense  
Eau de Parfum**  
1.7 fl. oz.  
784-126  
reg. \$31  
**\$25.99****Rare Platinum Intense  
Eau de Parfum**  
*amber floral*  
Iris, warm ambrette  
and smooth vetiver.  
1.7 fl. oz.  
787-660  
reg. \$30  
**\$24.99****Rare Amethyst  
Eau de Parfum**  
*fruity floral*  
Passionate plum,  
blooming violet and  
rich sandalwood.  
1.7 fl. oz.  
933-062  
reg. \$25  
**\$18.99**

Enjoy these special prices and exclusive offers only when you shop with an Avon Representative.



**Imari**  
**Eau de Toilette**  
*amber floral*  
 Italian bergamot,  
 tempting jasmine  
 and amber.  
 1.7 fl. oz.  
**871-496**  
 reg. \$25  
**\$18.99**



**Imari Seduction**  
**Eau de Toilette**  
*amber floral*  
 Wild berries,  
 hypnotic purple  
 orchid and patchouli.  
 1.7 fl. oz.  
**452-897**  
 reg. \$25  
**\$18.99**

**Imari Amor**  
*woody floral*

*Top:* Mandarin, Lychee,  
**Black Currant, Green Notes**

*Mid:* Rose, Jasmine, Neroli,  
 Ylang-Ylang, **Preclous Orris**

*Dry:* Sandalwood, Amber,  
 Patchouli, **Warm Musk**

**Eau de Parfum**  
 1.7 fl. oz. **762-573** reg. \$25  
**\$17.99**

**Travel Spray**  
 .3 fl. oz. **091-863** reg. \$14  
**\$9.99**



**Ginza Stefany**  
**In My Arms**  
**Eau de Parfum**  
*fruity floral*  
 Sunlit gardenia, black  
 currant and delicate  
 peach. 1.69 fl. oz.  
**408-922**  
 reg. \$40  
**\$34**

**Ginza Stefany**  
**Wish You Were Here**  
**Eau de Parfum**  
*fruity floral*  
 Sweet hawthorn berry,  
 ripe pear and sensuous  
 patchouli. 1.69 fl. oz.  
**405-149**  
 reg. \$40  
**\$34**

**Ginza Stefany**  
**Wish You Were**  
**Here Hair & Body Mist**  
 Featherlight micro-  
 conditioners that won't  
 weigh your hair down.  
 Imparts a subtle, healthy-  
 looking shine. 4 fl. oz.  
**623-826**  
 reg. \$22  
**\$18**

**Avon Prima Noir**  
**Eau de Parfum**  
*amber floral*  
 Enticing violet,  
 opulent jasmine  
 and creamy  
 vanilla noir.  
 1.7 fl. oz.  
**829-835**  
 reg. \$30  
**\$26.49**



**Avon Prima**  
**Eau de Parfum**  
*amber floral*  
 Delicate plum,  
 pink rose and  
 white patchouli.  
 1.7 fl. oz.  
**577-887**  
 reg. \$30  
**\$26.49**



**Live Out Loud**  
**Eau de Parfum**  
*fruity floral*  
 A free-spirited  
 expression of sweet  
 wild strawberry,  
 sparkling mimosa  
 and comforting  
 fluffy vanilla. 1.7 fl. oz.  
**142-000**  
 reg. \$40  
**\$26.49**



**Today**  
**Eau de Parfum**  
*soft floral*  
 Magnolia blossoms,  
 hibiscus petals  
 and silk musk.  
 1.7 fl. oz.  
**325-920**  
 reg. \$30  
**\$26.49**



L I V E

Y O U R

D R E A M

**Avon Classics  
Dreamlife**  
*soft floral*  
A magical blend perfect  
for every fantasy.

*Top:* **Mimosa Flower,**  
Hyacinth, Apricot

*Mid:* **Aspirational Rose,**  
Ylang-Ylang, Vanilla

*Dry:* Patchouli,  
Sandalwood,  
**Glowing Amber**

**Cologne**  
1.7 fl. oz. **236-227**  
reg. \$18  
**\$11.99**



**AVON CLASSICS** always beautiful

**Timeless Cologne**  
*soft floral*  
Cardamom, jasmine  
and patchouli.  
1.7 fl. oz.  
**037-930**  
reg. \$18  
**\$11.99**



**Night Magic Cologne**  
*woody floral*  
Neroli, jasmine  
and musk.  
1.7 fl. oz.  
**168-682**  
reg. \$18  
**\$11.99**



**Topaze Cologne**  
*soft floral*  
Jasmine, rose  
and sheer musk.  
1.7 fl. oz.  
**735-217**  
reg. \$18  
**\$11.99**

**Sweet Honesty Cologne**  
*soft floral*  
Lily of the valley,  
rose and cedarwood.  
1.7 fl. oz.  
**037-595**  
reg. \$18  
**\$11.99**



**Odyssey Cologne**  
*soft floral*  
Tuberose,  
ylang-ylang and  
warm oakmoss.  
1.7 fl. oz.  
**168-697**  
reg. \$18  
**\$11.99**



**Free O<sub>2</sub>**  
**Eau de Toilette**  
*fresh green floral*  
White peach tea,  
airy honeysuckle  
and musk.  
1.7 fl. oz.  
**265-658**  
reg. \$18  
**\$11.99**



**Candid Cologne**  
*amber floral*  
Bergamot,  
tuberose and  
patchouli.  
1.7 fl. oz.  
**038-295**  
reg. \$18  
**\$11.99**



**LYRD Oud Rose**  
*woody floral*  
Spicy saffron, romantic rose,  
and velvety patchouli.

**Eau de Parfum**  
1.7 fl. oz.  
954-412  
reg. \$38  
**\$32**

**Travel Spray**  
.3 fl. oz.  
448-496  
reg. \$21  
**\$17**



**LYRD Bouquet de Freesia**  
**Eau de Parfum**  
*soft floral*  
Freesia, tulip and  
amber. 1.7 fl. oz.  
129-269  
reg. \$36  
**\$29**



**LYRD Sparkling Neroli**  
**Eau de Parfum**  
*fresh citrus*  
Sparkling neroli,  
bergamot and  
warm musk.  
1.7 fl. oz.  
572-521  
reg. \$36  
**\$29**



**LYRD Honeysuckle Blossom**  
**Eau de Parfum**  
*soft floral*  
Apple blossom,  
honeysuckle nectar  
and vanilla orchid.  
1.7 fl. oz.  
616-282  
reg. \$24  
**\$20**



**LYRD Peony Rosé**  
**Eau de Parfum**  
*soft floral*  
Peony petals,  
pink currant and  
sheer musk.  
1.7 fl. oz.  
616-210  
reg. \$24  
**\$20**



**LYRD Artisan Cherry Vetiver**  
*amber floral*

*Top: Sweet Cherry,  
Fresh Raspberry,  
Crisp Pear*

*Mid: Violet,  
Marshmallow,  
Cedarwood*

*Dry: Vetiver,  
Amber,  
Fluffy Musk*

**Eau de Parfum**  
1.7 fl. oz.  
362-972  
reg. \$53  
**\$42**

**LYRD Artisan Cannabis Oud**  
*fresh citrus*

*Top: Sweet Pomelo,  
Rhubarb, Black Pepper,  
Saffron*

*Mid: Earthy Cannabis  
Leaves, Incense, Coffee*

*Dry: Oud, Palo Santo,  
Vetiver, Papyrus,  
Rich Agarwood*

**Eau de Parfum**  
Contains .01% of  
CBD. This eau de  
parfum does not  
contain THC.  
1.7 fl. oz. 254-544  
reg. \$60  
**\$49**







**SET INCLUDES:**

**LYRD Sparkling Neroli Eau de Parfum**  
*fresh citrus*  
Sparkling neroli, bergamot and warm musk. 1.7 fl. oz.

**LYRD Oud Rose Travel Spray**  
*woody floral*  
Spicy saffron, romantic rose and velvety patchouli. .3 fl. oz.

**2-PIECE SET**  
**\$25.99**  
**\$57 VALUE**  
819-087



**SET INCLUDES:**

**LYRD Bouquet de Freesia Eau de Parfum**  
*soft floral*  
Freesia, tulip and amber. 1.7 fl. oz.

**LYRD Oud Rose Travel Spray**  
*woody floral*  
Spicy saffron, romantic rose and velvety patchouli. .3 fl. oz.

**2-PIECE SET**  
**\$25.99**  
**\$57 VALUE**  
819-182



**SET INCLUDES:**

**LYRD Honeysuckle Blossom Eau de Parfum**  
*soft floral*  
Apple blossom, honeysuckle nectar and vanilla orchid. 1.7 fl. oz.

**LYRD Oud Rose Eau de Parfum**  
*woody floral*  
Spicy saffron, romantic rose and velvety patchouli. 1.7 fl. oz.

**2-PIECE SET**  
**\$31.99**  
**\$62 VALUE**  
820-326

# let's go to the fair!

New limited-edition candles bring back the fondest scents of sunny days spent at the state fair with delicious sweets and deep-fried everything!



**NEW**

❖ **LYRD Candle**  
3-wick, 11 oz. candle gives 30 hours of burn time. 4 1/4" diam. x 3 1/8" H. Glass jar, paper dust cover, soy blend wax. Assembled in USA. reg. \$25 **\$19.99 each**

❖ **LYRD Strawberry Funnel Cake Candle**  
Deep-fried dough and powdered sugar dreams! Notes of strawberry syrup funnel cake accord and vanilla bean. **403-700**

❖ **LYRD Saltwater Taffy Candle**  
America's favorite chewy, sticky boardwalk babies! Notes of sweet banana, red berries and sea salt. **385-809**

❖ **LYRD Piña Colada Slushie Candle**  
Refresh in a juicy and creamy sip of sunshine! Notes of Peruvian lime, coconut milk and golden pineapple. **385-320**

Never leave burning candles unattended. Keep away from children and pets.

## GIFT ALERT!

Father's Day  
is June 18.

**Mesmerize Ultimate**  
*woody fougère*  
Black pepper, zesty pomelo  
and sensuous patchouli.

**Eau de Toilette**  
3.4 fl. oz.  
897-030  
reg. \$36  
**\$27.99**

**Body Moisturizer**  
6.7 fl. oz.  
881-660  
reg. \$19  
**\$14.99**

**Body Wash**  
6.7 fl. oz.  
881-565  
reg. \$19  
**\$14.99**



# MESMERIZE

CAPTIVATE AT A SINGLE GLANCE

## MESMERIZE



**Mesmerize Platinum Ultimate**  
*woody floral*  
Crisp pear, violet and  
warm amber.

**Eau de Toilette**  
3.4 fl. oz.  
179-633  
reg. \$36  
**\$27.99**

**Body Wash**  
6.7 fl. oz.  
749-262  
reg. \$19  
**\$14.99**

**Body Moisturizer**  
6.7 fl. oz.  
749-300  
reg. \$19  
**\$14.99**

**Mesmerize Black**  
**Eau de Toilette**  
*woody fougère*  
Pepper, addictive  
nutmeg and  
tonka bean.  
3.4 fl. oz.  
305-667  
reg. \$25  
**\$18.99**



**Mesmerize Cologne**  
*fresh aromatic*  
Bergamot, spicy  
cardamom  
and amber.  
3.4 fl. oz.  
871-458  
reg. \$25  
**\$18.99**



**BLACK SUEDE  
ULTIMATE**  
EFFORTLESSLY COOL

**Black Suede Ultimate  
woody fougère**  
Blend of lemon, rich lavender and tonka bean.

**Eau de Toilette**  
3.4 fl. oz. 792-412  
reg. \$27  
**\$22.99**

**Body Moisturizer**  
6.7 fl. oz. 003-894  
reg. \$19  
**\$14.99**

**Body Wash**  
6.7 fl. oz. 003-875  
reg. \$19  
**\$14.99**

**Black Suede  
Eau de Toilette**  
*fresh aromatic*  
Fusion of bergamot,  
soft leather and  
oak moss.  
3.4 fl. oz.  
908-703  
reg. \$22  
**\$14.99**



**Black Suede  
Hair &  
Body Wash**  
5 fl. oz.  
366-318  
reg. \$8  
**\$3.99**



**Black Suede  
Aftershave  
Conditioner**  
3.4 fl. oz.  
364-353  
reg. \$8  
**\$3.99**



**Wild Country  
fresh aromatic**  
A rugged blend of  
lavender, coriander  
seed and sandalwood.

**Cologne**  
3 fl. oz.  
086-466  
reg. \$22  
**\$14.99**

**Wild Country  
Aftershave Splash**  
4 fl. oz.  
366-432  
reg. \$13  
**\$10.49**



**Wild Country  
Hair & Body Wash**  
5 fl. oz. 364-080  
reg. \$8  
**\$3.99**



**Perceive Cologne**  
*fresh aromatic*  
Sparkling citrus, sage  
and cedarwood.  
3.4 fl. oz.  
194-550  
reg. \$25  
**\$18.99**



**Alpha Eau de Toilette**  
*fresh aromatic*  
Charismatic verbena,  
juniper berries and  
cedarwood.  
3.4 fl. oz.  
088-598  
reg. \$25  
**\$18.99**



**Avon Exploration  
Eau de Toilette**  
*fresh aromatic*  
Fresh orange, silver  
sage and vetiver.  
2.5 fl. oz.  
593-666  
reg. \$25  
**\$18.99**



**Studio 1886 Gentleman**  
*woody fougère*  
 A bold and dynamic fragrance with notes of geranium, black pepper and cedarwood.

**Eau de Toilette**  
 1.7 fl. oz. 708-750  
 reg. \$50  
**\$39**

**Aftershave Lotion**  
 6.7 fl. oz. 708-927  
 reg. \$16  
**\$12.99**



**Studio 1886 Legendary**  
**Eau de Parfum**  
*woody fougère*  
 Vibrant lemon eases into crisp lavender, patchouli and salted amber. 1.7 fl. oz.  
 269-820  
 reg. \$50  
**\$39**



**STUDIO  
 1886**

THE PERFECT BALANCE OF  
 CONFIDENCE AND STRENGTH

**FRAGRANCE SETS** save on all your faves



**SET INCLUDES:**

**Black Suede Eau de Toilette**  
*fresh aromatic*  
 Bergamot, soft leather and oak moss. 3.4 fl. oz.

**Mesmerize Cologne**  
*fresh aromatic*  
 Bergamot, spicy cardamom and amber. 3.4 fl. oz.

**2-PIECE SET**  
**\$19.99**  
**\$47 VALUE**  
 822-204



**SET INCLUDES:**

**Black Suede Eau de Toilette**  
*fresh aromatic*  
 Bergamot, soft leather and oak moss. 3.4 fl. oz.

**Mesmerize Black Eau de Toilette**  
*woody fougère*  
 Pepper, addictive nutmeg and tonka bean. 3.4 fl. oz.

**2-PIECE SET**  
**\$19.99**  
**\$47 VALUE**  
 822-261



**SET INCLUDES:**

**Black Suede Eau de Toilette**  
*fresh aromatic*  
 Bergamot, soft leather and oak moss. 3.4 fl. oz.

**Wild Country Cologne**  
*fresh aromatic*  
 Lavender, coriander seed and sandalwood. 3 fl. oz.

**2-PIECE SET**  
**\$17.99**  
**\$44 VALUE**  
 822-170

**Avon Classics Hand Cream**

Moisturizing formula with jojoba seed oil and vitamin E. Leaves skin lightly scented. Each, 2.5 fl. oz.

- Sweet Honesty 234-789
- Night Magic 235-440
- Timeless 234-740
- reg. \$6
- \$3.99 each**



**Body Scrub & Wash**

Gentle formula cleanses as it removes rough, dry skin. Skin is refreshed, smooth and beautifully scented. Each, 6.7 fl. oz.

- Haiku 143-208
- Far Away 143-360
- reg. \$12
- \$9.99 each**



**Body Lotion**

Luxurious moisturizer leaves skin soft and scented. 6.7 fl. oz.

- Far Away 011-430
- Rare Pearls 933-517
- Haiku 447-820
- reg. \$10
- \$6.99 each**

*Creamy softness*

**Perfumed Skin Softener**

Moisturizing formula leaves skin soft and scented.

- Each, 5 fl. oz.
- Haiku 813-973
- Candid 103-926
- Far Away 812-981
- Night Magic 104-129
- Odyssey 104-171
- Sweet Honesty 104-463
- Timeless 104-478
- Imari 818-239
- reg. \$8
- \$3.99 each**



**Gentology Herb & Aloe All-Over Wash**

For face, hair and body. With aloe and natural herbal extracts.

- 10.1 fl. oz.
- 533-347
- reg. \$16
- \$13.65**



**Bar Soap**

Moisturizes as it gently cleanses, leaving skin lightly fragranced.

- Each, 3.17 oz. net wt.
- Black Suede 495-565
- Wild Country 495-570
- reg. \$6
- \$3.99 each**



**Deodorant Stick**

All-day freshness in your favorite classic Avon scent! Nourishing formula glides on smoothly without leaving any residue. Lasting odor protection.

- Each, 1 oz. net wt.
- Black Suede 705-602
- Rare Pearls 727-891
- Haiku 727-906
- reg. \$12
- \$9.99 each**

# GET YOUR BOHO ON!

The bohemian trend is back! Choose the color that speaks to your inner free spirit.

Coral/Goldtone  
788-193



Blue/Silvertone  
787-971



Purple/Rose Goldtone  
787-967



## NEW

### Colorful Enamel Collection

Colored epoxy detailing and colored beads.

#### Hoop Earrings

1 1/2" diam. Pierced.  
reg. \$13.99

**\$10.99 each pair**



Purple/  
Rose Goldtone  
787-656

Blue/Silvertone  
787-675

Coral/Goldtone  
787-728

#### 2-Row Necklace

Shortest layer: 14 1/2" L;  
longest layer: 16 1/2" L,  
with 3 1/2" extender.  
Pendant, 1 1/4" L.  
reg. \$16.99

**\$12.99 each**



Model is wearing Summer Vibes Collection in Warm.

# SUMMER SHADES

Express your mood in warm, cool or neutrals.



Neutral 420-998

Neutral 422-785

Cool 422-694

Cool 422-804

Warm 422-235

Warm 422-876

9-pair earrings pack

**Earrings Pack**  
 Nine-pair pack with studs and hoops, approx. 3/4" L. Pierced. **422-766**  
 reg. \$19.99  
**\$14.99 the pack**

**NEW**  
**Summer Vibes Collection**  
 Multicolor beads in cool, warm or neutral tones with goldtone accents.

**Necklace**  
 Glass beads. 16 1/2" L with 3 1/2" extender.  
 reg. \$16.99  
**\$12.99 each**

**Bracelet**  
 Stretches to fit most.  
 reg. \$16.99  
**\$12.99 each**

# BRIGHT BAUBLES

An eclectic mix of boho-style beads.

**NEW**

**Summer Brights Multilayered Collection**

Multicolor beads (glass and acrylic) with goldtone accents.

**Necklace**  
16½" L with 3½" extender. **789-128**  
reg. \$24.99  
**\$19.99**

**Earrings**  
Approx. 1¾" L. Pierced. **790-773**  
reg. \$13.99  
**\$10.99**

**Bracelet**  
One size fits most. **789-257**  
reg. \$16.99  
**\$12.99**



*necklace and earrings set*

*set of 3 bracelets*

**NEW**

**Casual Cools Collection**

Turquoise- and amethyst-color beads set in rose goldtone.

**Necklace and Earrings Gift Set**  
Layered necklace, 16½" L with 3½" extender. Approx. 1½" L pierced drops. **788-303**  
reg. \$24.99  
**\$19.99**  
the set

**Bracelet Set**  
Set of three. Stretches to fit most. **788-318**  
reg. \$16.99  
**\$12.99**  
the set

**Watch**  
Purple leatherlike strap, 9" L. Rose goldtone case with accent stone dial, 29mm diam. **788-299**  
reg. \$44.99  
**\$34.99**





**NEW**

**Abalone Shell Collection**  
Genuine abalone with blue and ivory beads set in silvertone.

**Drop Earrings**  
1 3/4" L. Pierced.  
423-409  
reg. \$16.99  
**\$12.99**

**Bracelet**  
Two-layer stretch bracelet.  
One size fits most. 423-231  
reg. \$19.99  
**\$14.99**

**Necklace and Earrings Gift Set**  
Longest layer: 18 3/4" L; shortest layer: 16 1/2" L with 3 1/2" extender.  
Pendant, approx. 1 1/2" L.  
Pierced drops, 3/4" L.  
422-900  
reg. \$32.99  
**\$24.99 the set**



*necklace and earrings set*

**NEW**

**Capri Glass Bead Collection**  
Mix of blue and shimmering goldtone glass beads set in goldtone.

**Earrings**  
Approx. 1 1/2" L drops. Pierced.  
424-572  
reg. \$12.99  
**\$9.99**

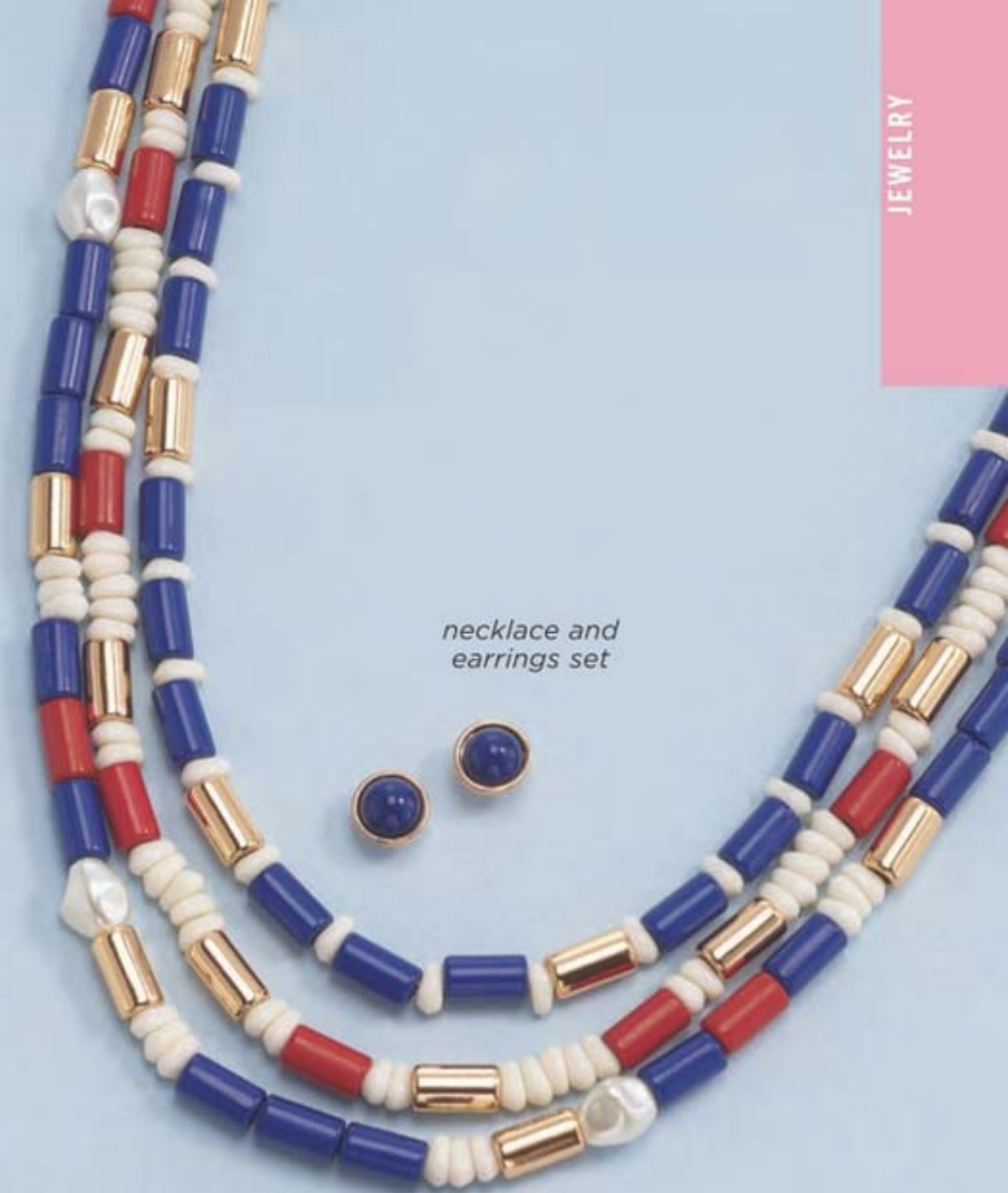
**Bracelet**  
Stretches to fit most.  
424-587  
reg. \$16.99  
**\$12.99**

**Necklace**  
30" L with 3 1/2" extender.  
423-466  
reg. \$22.99  
**\$16.99**



# AMERICAN BEAUTY

Catch the spirit of the red, white and blue and show off your patriotic flair.



*necklace and earrings set*



*set of 3 bracelets*

**Americana Collection**  
Mix of red, white and blue beads with goldtone and pearlesque accents.

**Necklace and Earrings Set**  
Longest layer: 18 3/4" L; shortest layer: 16 1/2" L with 3 1/2" extender.  
Pierced studs, approx. 1/4" diam. 731-867  
reg. \$32.99  
**\$24.99 the set**

**Hoop Earrings**  
1 1/4" L. Pierced.  
731-886  
reg. \$19.99  
**\$14.99**

**Bracelet Set**  
Set of three.  
One size fits most.  
731-871  
reg. \$16.99  
**\$12.99 the set**

# SLEEK STYLE

A modern statement,  
minimal in design, yet  
totally eye catching.

## NEW

### Cord and Metal Collection

Goldtone with grey-  
colored cord.

#### Necklace

28" L with 3 1/2"  
extender. Lobster  
closure. Pendant,  
1 3/4" L. **792-981**  
reg. \$19.99  
**\$14.99**

#### Hoop Earrings

With CZ accents.  
2 1/4" L. Pierced.  
**797-065**  
reg. \$12.99  
**\$9.99**

#### Bracelet

Multilayered bracelet.  
7 1/4" L with 1" extender.  
Lobster closure.  
**793-112**  
reg. \$16.99  
**\$12.99**

#### Earrings Pack

Six-pair set of pierced  
studs and hoops/drops,  
approx. 1 1/2" L.  
**797-008**  
reg. \$16.99  
**\$12.99 the pack**



6-pair pack



## NEW

### Filigree Medallion Collection

With CZ center stone accent. Available in goldtone and silvertone.

#### Necklace

16 1/2" L with  
3 1/2" extender.  
Pendant, 1 3/4" L.  
Goldtone **731-890**  
Silvertone **731-910**  
reg. \$19.99  
**\$14.99 each**

#### Earrings

1 1/2" L. Pierced.  
Goldtone **731-924**  
Silvertone **731-939**  
reg. \$12.99  
**\$9.99 each**

#### Bracelet

Stretches to fit most.  
Goldtone **731-943**  
Silvertone **731-958**  
reg. \$16.99  
**\$12.99 each**

# PAVÉ PALETTE

A kaleidoscopic rainbow of brilliantly colored stones.



**NEW**  
**Multicolor Pavé Collection**  
Rainbow-colored glass pavé stones set in goldtone.

**Pendant Necklace**  
16½" L with 3½" extender. Lobster closure. Pendant, 1¼" L.  
797-118 reg. \$16.99  
**\$12.99**

**Hoop Earrings**  
1½" diam. Pierced.  
797-400 reg. \$16.99  
**\$12.99**

**Ring**  
1" W.  
6 797-467  
8 797-524  
10 797-558  
reg. \$12.99  
**\$9.99**

**Stretch Bracelet**  
Stretches to fit most.  
804-494 reg. \$16.99  
**\$12.99**

**Blue Green Ombré Collection**  
Green and blue glass stones with CZ accents set in silvertone.

**Necklace**  
16½" L with 3½" extender. Pendant, 1" L.  
424-591  
reg. \$16.99  
**\$12.99**

**Drop Earrings**  
1¼" L. Pierced.  
427-700  
reg. \$12.99  
**\$9.99**

**Ring**  
Approx. ½" W.  
6 428-013  
8 429-077  
10 429-957  
reg. \$12.99  
**\$9.99**



**NEW**  
**Multicolor Pearly Collection**  
Genuine freshwater accent pearls (for Necklace and Earrings Gift Set and Bracelet) with lavender, peach and ivory pearlesque beads set in goldtone.

**Necklace and Earrings Gift Set**  
16½" L with 3½" extender. Lobster closure. Pierced drops, 1" L. 429-961  
reg. \$19.99  
**\$14.99 the set**

**Bracelet**  
Three-piece set. Stretches to fit most.  
429-980 reg. \$16.99  
**\$12.99 the set**

**Ring**  
Glass pearlesque beads with CZ accents.  
¾" L.  
Sizes:  
6 430-010  
8 431-547  
10 432-008  
reg. \$12.99  
**\$9.99**



necklace and earrings set

set of 3 bracelets

STAINLESS STEEL

opulence

Turquoise-color genuine howlite.

**NEW**

**Stainless Steel Howlite and Marcasite Collection**

Turquoise-color genuine howlite stone and genuine marcasite set in stainless steel.

**Necklace**

17" L with 1" extender. Pendant, 1 1/4" L. **804-680**  
reg. \$44.99  
**\$34.99**

**Earrings**

1 1/4" L. Pierced. **809-587**  
reg. \$46.99  
**\$36.99**

**Ring**

3/4" W.  
Sizes:  
5 **809-591** 8 **814-290**  
6 **809-606** 9 **814-305**  
7 **814-267** 10 **814-836**  
reg. \$44.99  
**\$34.99**



**Stainless Steel Lavender Collection**

Light amethyst-colored CZ stone set in stainless steel.

**Necklace**

17" L with 1" extender. Pendant, 3/4" L. Stone, 2.75-carat weight equivalent. **731-962**  
reg. \$49.99  
**\$39.99**

**Earrings**

3/4" L. Stone, 1.75-carat total weight equivalent. Pierced. **731-977**  
reg. \$49.99  
**\$39.99**

**Ring**

5-carat weight equivalent. Sizes:  
5 **731-981** 8 **732-017**  
6 **731-996** 9 **732-036**  
7 **732-002** 10 **732-055**  
reg. \$49.99  
**\$39.99**



**A. Men's Lord's Prayer Cross Necklace**  
Stainless steel necklace with blue-plated cross and the Lord's Prayer. 24" L with lobster closure. **732-108**  
reg. \$32.99  
**\$24.99**

**B. Men's Earth and Sky Necklace**  
Stainless steel textured beads with genuine sodalite and tiger-eye stones mixed with glass beads. 24" L with lobster closure. **732-347**  
reg. \$24.99  
**\$19.99**

**C. Men's Earth and Sky Precision Watch**  
Brown leatherlike strap, 10" L. Blue dial with silvertone case, 42mm diam. **733-750**  
reg. \$99.99  
**\$79.99**

**D. Men's Earth and Sky Bracelet**  
Stainless steel textured beads with genuine sodalite and tiger-eye stones mixed with glass beads. Stretches to fit most. **733-707**  
reg. \$22.99  
**\$16.99**

the Lord's Prayer etched on cross

- Features:
- Mechanical-looking dial
  - Luminous markers
  - Water-resistant 3ATM
  - Faux chronometers

# style trip

Get ready for your summer escape. Free your fashion spirit with boho prints and flowy silhouettes.

**NEW**

❖ **Printed Handkerchief Dress**

Sleeveless printed dress with V-neck and handkerchief hem. Rayon/spandex. Center back length: 40½" (shortest point), 48½" (longest point) on medium; 42" (shortest point), 50" longest point on 1X. Machine wash and dry. Imported.

XS(0-2) **692-486**  
 S(4-6) **692-558**  
 M(8-10) **694-641**  
 L(12-14) **696-242**  
 XL(16) **699-438**  
 1X(18W-20W) **699-442**  
 2X(22W-24W) **699-461**  
 3X(26W-28W) **700-691**  
 reg. \$62.99  
**\$48.99**

Gold-Studded Sandal  
 sold on page 112.



Sunglasses not available.



**NEW**

A. ❖ **Crochet-Trim Cutout Top**

Coral top with round neckline and crochet trim on shoulder and sleeves. Body: polyester/spandex; crochet trim: 100% polyester. Center back length: 25½" on medium; 27½" on 1X. Machine wash, dry flat. Imported.

XS(0-2) **665-540** XL(16) **665-612**  
 S(4-6) **665-555** 1X(18W-20W) **665-699**  
 M(8-10) **665-560** 2X(22W-24W) **666-240**  
 L(12-14) **665-593** 3X(26W-28W) **666-418**  
 reg. \$42.99  
**\$32.99**



Sunglasses not available.

**NEW**

B. ❖ **Bandana Printed Top**

Purple top with paisley bandana and floral prints, split-neck detail, shirring at waist, short sleeves with elastic cuff and slight high-low hem. 100% rayon. Center length: 26" (front), 28" (back) on medium; 28" (front), 30½" (back) on 1X. Machine wash, dry flat. Imported.

XS(0-2) **667-213** XL(16) **678-289**  
 S(4-6) **667-486** 1X(18W-20W) **691-111**  
 M(8-10) **667-687** 2X(22W-24W) **691-126**  
 L(12-14) **667-820** 3X(26W-28W) **692-471**  
 reg. \$48.99  
**\$38.99**



## get on the bright side!

### ALL NEW

**A. ♦ 2-Pack Tulip-Sleeve Tops**  
 Round elastic-neck tops with light shirring and short tulip sleeves in blue topaz (solid) and red print. Rayon/spandex. Center back length: 24" on medium; 25½" on 1X. Machine wash, dry flat. Imported.  
 XS(0-2) **700-710**    XL(16) **700-759**  
 S(4-6) **700-725**    1X(18W-20W) **700-763**  
 M(8-10) **700-730**    2X(22W-24W) **700-778**  
 L(12-14) **700-744**    3X(26W-28W) **700-782**  
 reg. \$44.99  
**\$34.99 pack of 2**



**B. ♦ Cold-Shoulder Printed Dress**  
 Blue-topaz-print swing dress with round neck and cutout shoulders. Viscose/spandex. Center back length: 35" on medium; 36" on 1X. Machine wash, dry flat. Imported.  
 XS(0-2) **704-682**    XL(16) **704-902**  
 S(4-6) **704-701**    1X(18W-20W) **704-989**  
 M(8-10) **704-754**    2X(22W-24W) **704-993**  
 L(12-14) **704-879**    3X(26W-28W) **705-014**  
 reg. \$49.99  
**\$39.99**

# the carefree summer maxi

### NEW

**♦ Smocked Maxi Dress**  
 Red maxi dress with round elastic neck, smocked bodice, raglan short sleeves, ruffle detail on skirt and side seam pockets. Body: 100% rayon; lining: 100% polyester. Center back length: 49" on medium and 1X. Hand wash, dry flat. Imported.  
 XS(0-2) **701-019**  
 S(4-6) **701-281**  
 M(8-10) **701-296**  
 L(12-14) **701-870**  
 XL(16) **701-884**  
 1X(18W-20W) **701-899**  
 2X(22W-24W) **701-903**  
 3X(26W-28W) **701-918**  
 reg. \$53.99  
**\$42.99**  
**Gold-Studded Sandal**  
 sold on page 112.

Sunglasses not available.

#### APPAREL SIZE CHART

SIZE	BUST	WAIST	HIP
XS 0/2	30.5"-32"	23.5"-25"	32.5"-34"
S 4/6	33.5"-35"	26.5"-28"	35.5"-37"
M 8/10	36.5"-38"	29.5"-31"	38.5"-40"
L 12/14	39.5"-41"	32.5"-34"	41.5"-43"
XL 16	43"-44"	35.5"-36.5"	44.5"-45.5"
1X 18W/20W	46.5"-48.5"	39"-41"	48"-50"
2X 22W/24W	50.5"-52.5"	43"-45"	52"-54"
3X 26W/28W	54.5"-56.5"	47"-49"	56"-58"

# summer vibes

## ALL NEW

### ❖ Eyelet

#### Puff-Sleeve Top

White top with eyelet-puff short sleeves with elastic cuff. Body: cotton/spandex; sleeves: polyester/cotton. Center back length: 23" on medium; 24 1/2" on 1X. Machine wash, dry flat. Imported.

XS(0-2) 702-000  
S(4-6) 702-015  
M(8-10) 702-020  
L(12-14) 702-034  
XL(16) 702-049  
1X(18W-20W) 702-053  
2X(22W-24W) 702-068  
3X(26W-28W) 702-072  
reg. \$44.99  
**\$34.99**

### ❖ Stripe Pull-On Pants

Striped pants with elastic waistband and side seam pockets. Polyester/spandex. Inseam: 28 1/2" on all sizes. Machine wash, dry flat. Imported.

XS(0-2) 703-064  
S(4-6) 703-834  
M(8-10) 703-872  
L(12-14) 703-906  
XL(16) 704-500  
1X(18W-20W) 704-515  
2X(22W-24W) 704-572  
3X(26W-28W) 704-678  
reg. \$42.99  
**\$32.99**

Double-Strap Sandal  
sold on page 112.



## keep it cool

## ALL NEW

### A. ❖ Sleeveless Smocked Top

Blue Swiss-dot top with smocking on front and back yoke with ruffle detail on neck and sleeves. Three-button closure on back. 100% polyester. Center back length: 24" on medium; 26" on 1X. Machine wash, line dry. Imported.

XS(0-2) 701-922      XL(16) 701-960  
S(4-6) 701-937      1X(18W-20W) 701-975  
M(8-10) 701-941      2X(22W-24W) 701-980  
L(12-14) 701-956      3X(26W-28W) 701-994  
reg. \$39.99  
**\$29.99**

### B. ❖ Stripe Button-Front Shirt

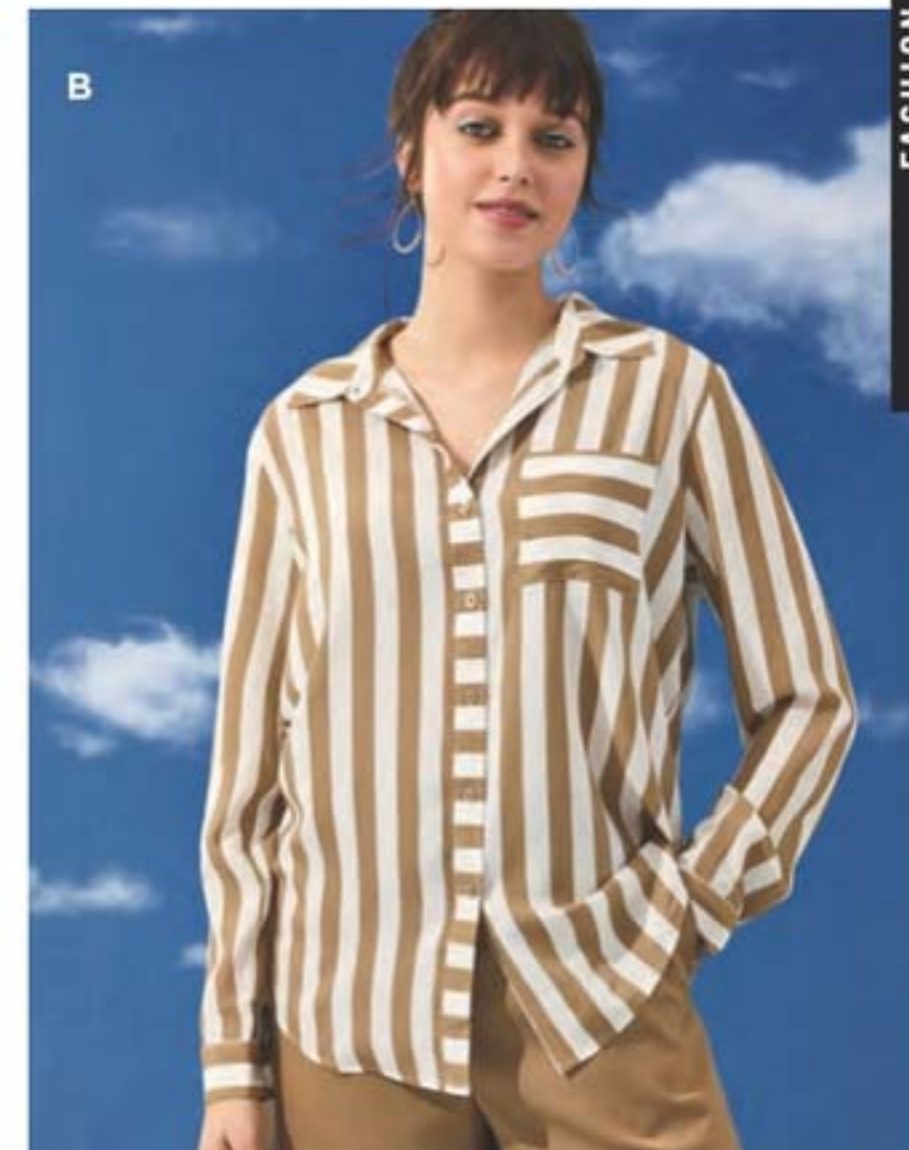
Striped button-down shirt with chest pocket, long sleeves with button cuff and shirttail hem. Rayon/polyester. Center back length: 28" on medium; 29" on 1X. Machine wash, dry flat. Imported.

XS(0-2) 700-816      XL(16) 700-869  
S(4-6) 700-835      1X(18W-20W) 700-873  
M(8-10) 700-840      2X(22W-24W) 700-911  
L(12-14) 700-854      3X(26W-28W) 700-998  
reg. \$46.99  
**\$36.99**

### C. ❖ Open-Knit Long Cardigan

White open-front cardigan with patch pockets and long sleeves. Nylon/spandex. Center back length: 40" on medium; 41" on 1X. Machine wash, dry flat. Imported.

XS(0-2) 702-087      XL(16) 702-288  
S(4-6) 702-091      1X(18W-20W) 702-766  
M(8-10) 702-106      2X(22W-24W) 702-790  
L(12-14) 702-110      3X(26W-28W) 703-011  
reg. \$53.99  
**\$42.99**



tee set



4-Pack



**NEW**

❖ **4-Pack Summer Tees**

V-neck short-sleeve tees with shirttail hem in white, purple, blue topaz (solid colors) and blue print. Cotton/polyester. Center back length: 26" on medium; 28" on 1X. Machine wash, dry flat. Imported.

XS(0-2) <b>705-200</b>	S(4-6) <b>705-215</b>	M(8-10) <b>705-440</b>	L(12-14) <b>705-469</b>
XL(16) <b>706-340</b>	1X(18W-20W) <b>706-355</b>	2X(22W-24W) <b>706-360</b>	3X(26W-28W) <b>706-393</b>

reg. \$49.99  
**\$39.99 pack of 4**



**ALL NEW**

**A. ❖ Sleeveless Grommet Top**

Celery-green top with V-neck with grommet-strap detail. Rayon/spandex. Center back length: 27" on medium; 28" on 1X. Machine wash, dry flat. Imported.

XS(0-2) <b>705-033</b>	XL(16) <b>705-110</b>
S(4-6) <b>705-048</b>	1X(18W-20W) <b>705-124</b>
M(8-10) <b>705-052</b>	2X(22W-24W) <b>705-181</b>
L(12-14) <b>705-086</b>	3X(26W-28W) <b>705-196</b>

reg. \$42.99  
**\$32.99**

**B. ❖ 2-Piece Crinkled Pants Set**

Includes green V-neck top with pleat detail, open collar, two patch pockets with button detail, short sleeves with folded cuff and shirttail hem; and matching pants with elastic waistband and side seam pockets. 100% cotton. Center back length for top: 26" on medium; 28" on 1X. Inseam for bottoms: 27" for all sizes. Hand wash, dry flat. Imported.

XS(0-2) <b>706-450</b>	XL(16) <b>706-518</b>
S(4-6) <b>706-465</b>	1X(18W-20W) <b>706-522</b>
M(8-10) <b>706-470</b>	2X(22W-24W) <b>706-537</b>
L(12-14) <b>706-503</b>	3X(26W-28W) <b>706-541</b>

reg. \$64.99  
**\$49.99 2-piece set**



2-Piece Set

FASHION

Double-Buckle Sandal sold on page 112.





# sunshine sandals

**ALL NEW**

**A. ♦ Gold-Studded Sandal**  
 Tan with gold-stud detail on upper. Man-made materials. Half sizes, order size down. Imported.  
 6M 722-149 8M 722-172 10M 725-296  
 7M 722-168 9M 725-281 11M 725-300  
 reg. \$29.99  
**\$22.99**

**B. ♦ Double-Buckle Sandal**  
 Two-tone sandal with adjustable double buckles. Man-made materials. Half sizes, order size down. Imported.  
 6M 706-556 8M 706-580 10M 706-651  
 7M 706-560 9M 706-613 11M 706-666  
 reg. \$32.99  
**\$24.99**

**C. ♦ Rhinestone T-strap Sandal**  
 Blue with rhinestone detail on upper straps. Adjustable ankle strap. Man-made materials. Half sizes, order size down. Imported.  
 6M 725-315 8M 725-478 10M 728-371  
 7M 725-320 9M 728-367 11M 729-454  
 reg. \$34.99  
**\$26.99**



**NEW**

**♦ 2-Piece Rib-Knit Shorts Set**  
 Printed set includes top with round neck, side slits and short sleeves; and matching shorts with elastic waistband. Polyester/spandex. Center back length for top: 25½" on medium; 28" on 1X. Inseam for shorts: 7" on medium; 8" on 1X. Machine wash and dry. Imported.  
 XS(0-2) 731-594  
 S(4-6) 731-613  
 M(8-10) 732-548  
 L(12-14) 732-552  
 XL(16) 732-567  
 1X(18W-20W) 732-586  
 2X(22W-24W) 732-624  
 3X(26W-28W) 732-643  
 reg. \$48.99  
**\$38.99**  
 2-piece set

# strike a match

**NEW**

**♦ Mesh Slip-On Sneaker**  
 Elastic gore on upper. Man-made materials. Half sizes, order size up. Imported. reg. \$46.99  
**\$36.99 each pair**

**Light Grey**  
 6M 708-195 9M 718-996  
 7M 713-736 10M 719-040  
 8M 718-981 11M 719-720

**Red**  
 6M 719-734 9M 722-115  
 7M 722-010 10M 722-120  
 8M 722-024 11M 722-134



**PLAYTEX®** comfort and smoothing support

Shown:  
Nude.



- WHITE
- NUDE
- BLACK

❖ **Playtex® Smoothing Minimizer Wirefree Bra (US4697)**

Back closure. Lightly lined. Nylon/spandex. Hand wash, line dry. Imported. Sizes: 36-44C,D,DD,DDD (all colors). reg. \$39  
**\$33.99**

Shown:  
Toffee.



- WHITE
- NATURAL BEIGE
- TOFFEE
- ZEN BLUE
- SAILOR BLUE
- BLACK

❖ **Playtex® 18 Hour® Original Comfort Strap® Wirefree Bra (4693)**

Back closure. Natural latex rubber/polyester/nylon/cotton. Hand wash, line dry. Imported. **White, Natural Beige or Toffee:** 36-48B,C; 34-48D,DD; 38-48DDD. **Pretty Blush or Zen Blue:** 36-42B; 36-44C,D; 38-46DD,DDD. **Sailor Blue:** 36-44C,D; 38-46DD; 44-46DDD. **Black:** 36-48B; 36-54C; 36-50D, 54D; 38-54DD. reg. \$39  
**\$33.99**

**BALI®** shape-smoothing styles to contour your curves

Shown:  
Taupe.



- WHITE
- TAUPE
- BLACK

❖ **Bali® Comfort Revolution® EasyLite™ Breathable Racerback Bra (DF3499)**

Racerback pullover wirefree bra with mesh back. Cool Comfort® technology. Nylon/spandex. Hand wash, line dry. Imported. Sizes: S, M, L, XL, 2XL, 3XL (all colors). reg. \$48  
**\$38.99**

Shown:  
Taupe.



- WHITE
- SAND-SHELL
- TAUPE
- BLACK

❖ **Bali® Passion For Comfort® Breathable Minimizer Underwire Bra (DF3490)**

Minimizes by 1/2". Full coverage. No-slip, adjustable and convertible straps can be worn traditional or crisscross. Back closure. Nylon/polyester/spandex. Hand wash, line dry. Imported. Sizes: 34-42C-DDD (all colors). reg. \$48  
**\$38.99**

Shown:  
Sandshell.



- WHITE
- GENTLE PEACH
- NUDE
- SAND-SHELL
- CRYSTAL GREY
- BLUE VELVET
- BLACK

❖ **Playtex® 18 Hour® Ultimate Lift and Support Wirefree Bra (4745)**

Nylon/polyester/cotton/spandex. Hand wash, line dry. Imported. **White, Nude or Sandshell:** 36-42B; 36-44C,D; 38-46DD,DDD. **Gentle Peach, Crystal Grey, Blue Velvet or Black:** 36-40B; 36-44C,D; 38-44DD,DDD. reg. \$39  
**\$32.99**

Shown:  
Light Beige.



- WHITE
- LIGHT BEIGE
- BLACK

❖ **Playtex® 18 Hour® Posture Bra (E525)**

PowerSupportX bra frame provides back support. 4-Way TruSUPPORT®. Front closure. Lightly lined. Nylon/spandex. Hand wash, line dry. Imported. Sizes: 36-42B; 36-44C,D; 38-46DD (all colors). reg. \$39  
**\$32.99**

Shown:  
Nude.

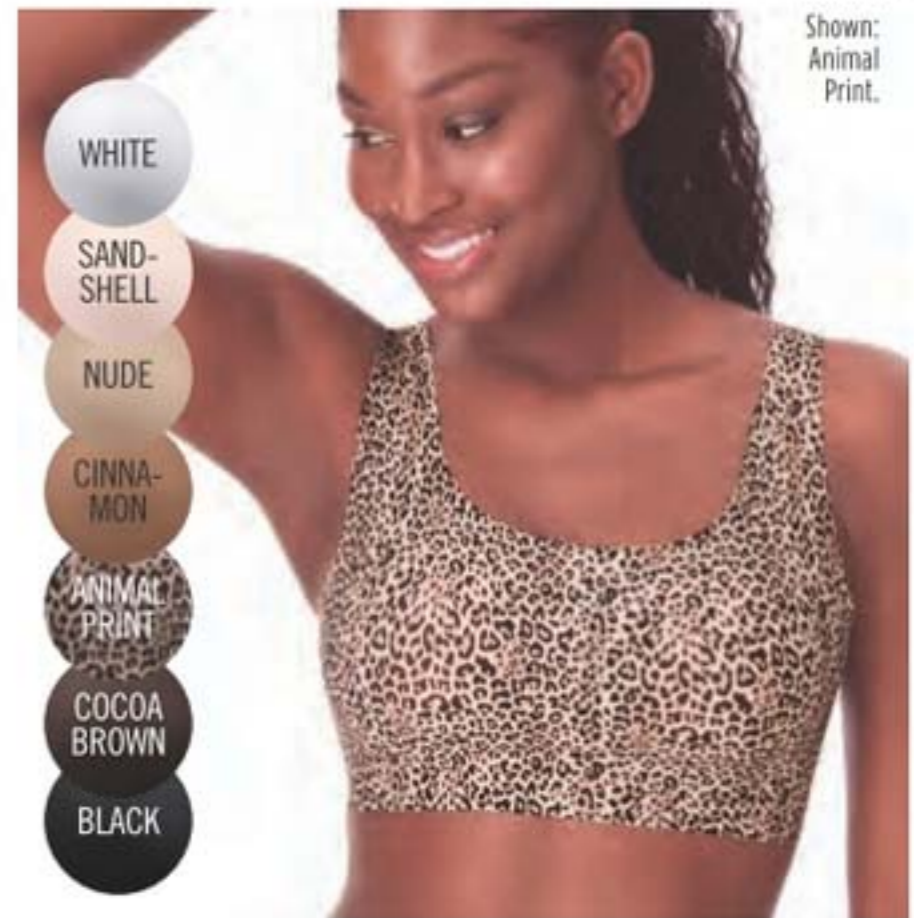


- WHITE
- NUDE
- WARM STEEL
- BLACK

❖ **Bali® Comfort Revolution® Front-Close Shaping Underwire Bra (3P66)**

Front closure. Lightly lined. Nylon/polyester/spandex. Hand wash, line dry. Imported. Sizes: 34-42B,C,D,DD (all colors). reg. \$48  
**\$38.99**

Shown:  
Animal Print.



- WHITE
- SAND-SHELL
- NUDE
- CINNAMON
- ANIMAL PRINT
- COCOA BROWN
- BLACK

❖ **Bali® Comfort Revolution® EasyLite™ Wirefree Bra (3491)**

Wirefree pullover bra with side flex panels. SmoothTec® design for an invisible look under clothing. Full-coverage back smoothing and support. Cool Comfort™ moisture-wicking fabric. Removable cups. Nylon/spandex. Hand wash, line dry. Imported. Sizes: S, M, L, XL, 2XL, 3XL (all colors). reg. \$48  
**\$38.99**

Playtex® is a registered trademark used under license.

# clean up crew

SAFELY REMOVE  
TOUGH STAINS



❖ **Homestar Cook Top & Stainless Steel Cleaning Wipes**  
Plant-based surfactants to lift and remove leftover residue and spills from glass cooktops and stainless steel. 50 wipes, each, 10½" x 9½".  
**149-995**  
reg. \$9.99  
**\$7.99**

❖ **Homestar Rangehood & Kitchen Degreaser**  
Super-strength formula with a double-solvent solution blend for hard-to-remove grease. External oven use only. 16.2 fl. oz.  
**918-150**  
reg. \$13.99  
**\$10.99**

❖ **Homestar Cook Top Cleaner & Polish**  
Cleans, polishes and protects smooth cooktop ranges for a scratch-free shine. Plant-based formula. Fresh green herbal scent. 7.7 fl. oz.  
**593-059**  
reg. \$12.99  
**\$9.99**

## HOMESTAR

❖ **Homestar Multi Purpose Cleaner**  
Bleach-free. With citric acid, orange oil and baking soda. Natural citrus scent. 16.9 fl. oz.  
**307-507**  
reg. \$9.99  
**\$7.99**



❖ **Refill**  
Spray nozzle not included. 30.4 fl. oz.  
**700-964**  
reg. \$11.99  
**\$8.99**



❖ **Homestar Odor Eliminator for Fridge**  
No-spill solid gel formula neutralizes fridge odors. Lasts up to 3 months. 14.8 oz. net wt.  
**793-165**  
reg. \$7.99  
**\$5.99**



❖ **Homestar Heavy Duty Cleaning Wipes**  
Jumbo size. 50 sheets, each, 9½" x 11".  
**721-468**  
reg. \$11.99  
**\$8.99**

❖ **Homestar Floor Cleaner**  
Nozzle provides targeted application to apply directly to floor. Dries quickly for a streak-free shine. Great for laminate, sealed hardwood and sealed stone. Fresh lavender scent. 25.3 fl. oz.  
**149-980**  
reg. \$9.99  
**\$7.99**



❖ **Homestar Bathroom Cleaner**  
Just spray, let sit and wipe away! Fights tough soap scum, limescale, calcium and grime. Fresh green apple scent. 25.4 fl. oz.  
**092-635**  
reg. \$11.99  
**\$8.99**



❖ **Homestar Foaming Toilet Bowl Cleaner**  
Fights toilet rings and stains. Includes five pouches. 10.6 oz. total net wt.  
**090-298**  
reg. \$12.99  
**\$9.99**



**FREE**

**Homestar Heavy Duty Cleaning Wipes** with any \$15 home purchase, pages 116 thru 121. Sold separately on page 117. Limited quantities.

# fresh zone

❖ **Fresh Fiji Sheet Detergent**  
Laundry detergent in a single sheet! Seven-enzyme stain-removing blend. 30 easy-dissolving detergent sheets. Each sheet, 9" x 8".  
**Lavender 406-092**  
**Fresh 184-203**  
reg. \$19.99  
**\$14.99 each**



❖ **Fresh Fiji Hygienic Power Fabric Softener**  
3x concentrated. Softens, freshens and protects clothes. Long-lasting rosewater and jasmine scent. Made with plant-based surfactants. Microplastic-free. Safe for skin and environment. 50 loads. 33.8 fl. oz.  
**792-355**  
reg. \$7.99  
**\$5.99**



❖ **Fresh Fiji Hygienic Power Laundry Detergent**  
With Hygienic Power formula to remove dirt you can't see, a stain-fighting solution to brighten and whiten and baking soda to help prevent odors. 25 loads. 33.8 fl. oz.  
**700-137**  
reg. \$8.99  
**\$6.99**



❖ **Fresh Fiji Hygienic Power Color Booster & Stain Remover**  
Hygienic Power formula. Whitens and brightens colors and eliminates stains and odors. With peroxide and oxygen-based bleach. 63 loads. 47 fl. oz.  
**792-169**  
reg. \$12.99  
**\$9.99**



## FRESH FIJI

❖ **Fresh Fiji Fabric Refresher With Wrinkle Release**  
Freshens fabrics and smooths wrinkles. Clean laundry scent. 16.9 fl. oz.  
**322-988**  
reg. \$11.99  
**\$8.99**



❖ **Fresh Fiji Shoe Deodorizer**  
Eliminates tough odors on contact with the power of baking soda and persimmon. Great for all kinds of shoes, from leather to cotton. 10.1 fl. oz.  
**322-256**  
reg. \$9.99  
**\$7.99**



❖ **Fresh Fiji Gel Beads Deodorizer**  
Neutralizes odors for up to 70 days. Plastic. 5.29 oz. net wt.  
**Fresh Cotton 930-188**  
**Calming Lavender 918-313**  
reg. \$11.99  
**\$8.99 each**



❖ **Fresh Fiji Car Air Freshener**  
Clips onto car vents and allows you to control the fragrance intensity. Freshens for up to 50 days. .17 fl. oz. 2 1/4" diam. x 1 1/4" D with 2" L clip. Plastic. Imported.  
**Orange Blossom 721-472**  
**White Cotton 721-597**  
reg. \$7.99  
**\$5.99 each**



**NO STRONG OR HARSH, SYNTHETIC, CHEMICAL FUMES.**

## NEW

❖ **Fresh Fiji Hinoki Room Spray**  
A fine mist to freshen and deodorize every room with the light forest scent of hinoki wood. With natural essential oils. 13.5 fl. oz.  
**508-309**  
reg. \$11.99  
**\$8.99**

❖ **Fresh Fiji Lavender Pillow Spray**  
A fine mist for pillowcases, linens and bedding with the calming scent of lavender to help promote relaxation of body and mind. With natural essential oils. 13.5 fl. oz.  
**508-859**  
reg. \$11.99  
**\$8.99**



Safe for most machine-washable fabrics. Dermatologist-tested. Let dry before skin contact. Use in a well-ventilated area. Not for use on skin or pets. Keep out of reach of children.



# FREE

**Homestar Heavy Duty Cleaning Wipes**  
with any \$15 home purchase, pages 116 thru 121.  
Sold separately on page 117. Limited quantities.

## CUCINA ESSENTIALS

❖ **Cucina Essentials Glass Dish Soap Bottle**  
Refillable dispenser includes pump. Holds 16 fl. oz. 3" diam. x 8¾" H. Glass, metal. Imported.  
**003-727**  
reg. \$12.99  
**\$9.99**



❖ **Cucina Essentials Spray-On Dish Soap**  
99% biodegradable, eco-friendly plant-based formula cuts grease on contact. Dermatologically-tested. Safe for skin. 16.9 fl. oz.  
**Fresh Citrus 545-992**  
**Red Apple 545-973**  
reg. \$9.99  
**\$7.99 each**



❖ **Cucina Essentials Dish Soap**  
Concentrated mild gel leaves surfaces spotlessly clean. Free of chemical preservatives. Naturally derived formula with stain-removing citric acid. 16.6 fl. oz.  
**Lemon Verbena 918-165**  
**Red Apple 918-170**  
reg. \$8.99  
**\$6.99 each**



❖ **Eraser Sponge 3-Pack**  
Just add water to erase tough grease, soap scum and permanent marks. Textured side. Each, 4¼" L x 3" W. Melamine. Imported.  
**149-373**  
reg. \$4.99  
**\$3.99 pack of 3**



❖ **Non-Scratch Scrub Sponge 3-Pack**  
Dual-sided. Non-scratch scrubber scours stains, dirt and grime fast and safely, even non-stick surfaces. S-shape design. Each, 4½" L x 3" W. Cellulose. Imported.  
**149-369**  
reg. \$7.99  
**\$5.99 pack of 3**

## SIRIUS GROOM

❖ **Sirius Groom Pet Detangling Mist**  
No-rinse detangling mist keeps dog's fur tangle- and knot-free. Formulated with soothing and hydrating oat kernel extract and pro-vitamin B5. Use on wet or dry fur. Soft vanilla scent. Gentle and effective for all breeds. 5.1 fl. oz.  
**700-926**  
reg. \$12.99  
**\$9.99**

❖ **Sirius Groom Pet Grooming Mist**  
Softens, soothes and hydrates your pet's skin and coat for instant freshness. Perfect for in-between washes. Moisturizing formula with centella asiatica, rosemary, oatmeal and pro-vitamin B5. Long-lasting baby powder scent. Gentle and effective for all breeds. 5.1 fl. oz.  
**758-794**  
reg. \$12.99  
**\$9.99**



❖ **Sirius Groom Pet Odor Eliminator for Upholstery & Fabrics**  
Nature-derived rice and barley to absorb and neutralize odors. Light baby powder scent. For fabric and carpet use only, do not spray on pets. 13.5 fl. oz.  
**247-565**  
reg. \$12.99  
**\$9.99**  
NOT FOR USE ON PETS



❖ **Sirius Groom Shampoo for Dogs**  
Anti-inflammatory oatmeal protects and soothes skin. pH-balanced formula. Nature-derived ingredients. 16.2 fl. oz.  
**Baby Powder 247-493**  
**Lovely Berry 247-436**  
reg. \$14.99  
**\$11.99 each**



❖ **Sirius Groom Conditioner for Dogs**  
Rinse-off conditioner leaves coat soft and shiny. With aloe vera, vitamin E and oatmeal extract. Free from sulfates, colorants and silicones. Cruelty-free. 16.2 fl. oz.  
**Baby Powder 545-954**  
**Lovely Berry 545-940**  
reg. \$14.99  
**\$11.99 each**



**FREE** Homestar Heavy Duty Cleaning Wipes with any \$15 home purchase, pages 116 thru 121. Sold separately on page 117. Limited quantities.

#NAKEDPROOF targeted treatments for every body



**Smooth Moves  
Anti-Cellulite Cooling Gel**  
L-carnitine and chai hu help target fat cells.  
6.7 fl. oz.  
722-722  
reg. \$21  
**\$12.99**



**Affirm Yourself  
Firming Body Cream**  
Caffeine complex helps skin look more toned. 6.7 fl. oz.  
522-970  
reg. \$21  
**\$12.99**



**Smooth Moves  
Anti-Cellulite Massager**  
Use with gel to help firm and smooth skin. Rotating rollers help promote circulation and reduce the appearance of cellulite. Plug-in device. 011-296  
reg. \$70  
**\$62.99**



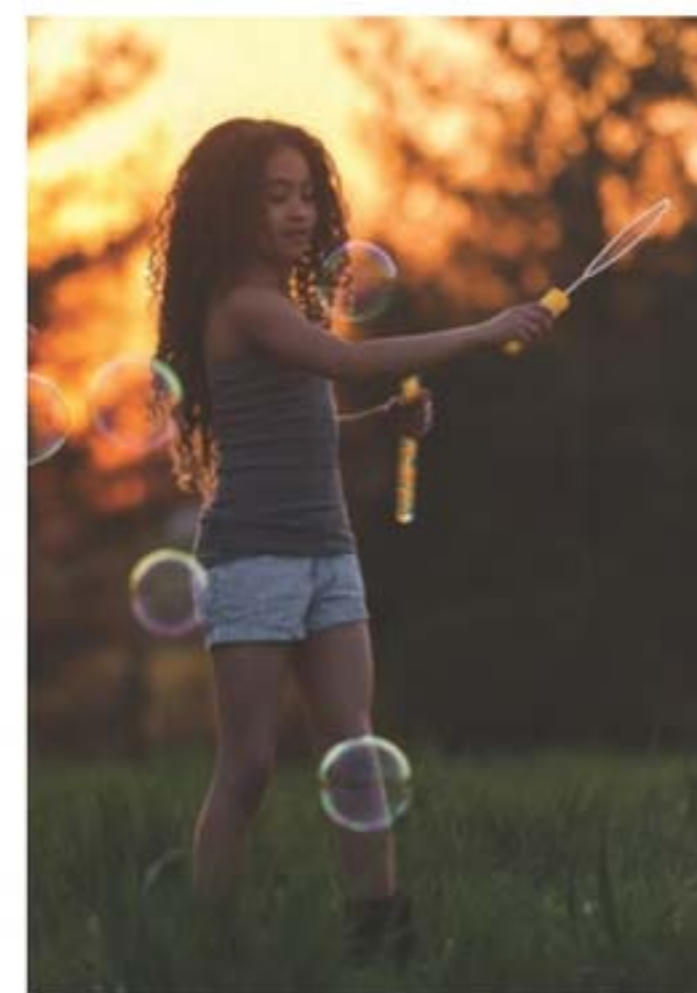
#NakedProof  
**Smooth Moves  
Anti-Cellulite Cooling Gel**  
6.7 fl. oz.

**Skin So Soft  
Original Beauty Bar Soap**  
3.17 oz. net wt.

**2-PIECE SET  
\$14.50  
OVER \$25 VALUE**  
818-630



**BUG GUARD PLUS**



- **protects against** mosquitoes, deer ticks, sandflies, no-see-ums, gnats, biting midges and black flies
- **repels deer ticks** that may carry and transmit Lyme disease
- **DEET-free/PABA-free**
- **With vitamin E & aloe**



Read and follow label directions and precautions.

Picaridin for when bugs are most active

**dawn + dusk**



**BUG GUARD PLUS PICARIDIN**

**A. Travel Size Pump Spray**  
2 fl. oz. 009-600  
reg. \$12  
**\$8.99**

**B. Pump Spray**  
Repels mosquitoes for 8 hours, deer ticks for 12 hours. 4 fl. oz.  
255-373 reg. \$15  
**\$9.99**

**C. Family Size Pump Spray**  
8 fl. oz. 255-187  
reg. \$24  
**\$17.99**

**D. Towelettes**  
Repels mosquitoes for 8 hours, deer ticks for 12 hours. Resealable bag holds 8 packets. Each towelette, 9" L x 5 1/2" W. Each, .3 fl. oz. 269-562  
reg. \$16  
**\$11.69 pack of 8**

**E. Aerosol Spray\***  
Repels mosquitoes for 6 hours, deer ticks for 7 hours. 4 oz. net wt. 315-243 reg. \$20  
**\$14.99**

\*Aerosol Spray does not contain aloe.



Gentle Breeze protects against

# sun + bugs + water

- **SPF 30**
- **water-resistant**
- **DEET-free/PABA-free**
- **With vitamin E & aloe**
- **repels mosquitoes** that may carry and transmit the Zika virus



**BUG GUARD PLUS IR3535® GENTLE BREEZE SPF 30 LOTION**  
 No need to wash off. Dermatologist-tested.  
 4 fl. oz. **925-819**  
 reg. \$15  
**\$9.99**



- **protects against** mosquitoes, deer ticks, no-see-ums, sandflies, gnats and biting midges
- **repels deer ticks** that may carry and transmit Lyme disease
- **DEET-free/PABA-free**
- **water-resistant**
- **SPF 28 & SPF 30**



Read and follow label directions and precautions.

# Expedition for all-in-one protection from sun + bugs



**BUG GUARD PLUS IR3535® EXPEDITION**  
 No need to wash off. Dermatologist-tested.

- |                                                                                                                                                                                                         |                                                                                                                                                                                                                 |
|---------------------------------------------------------------------------------------------------------------------------------------------------------------------------------------------------------|-----------------------------------------------------------------------------------------------------------------------------------------------------------------------------------------------------------------|
| <p><b>A. Aerosol Spray SPF 28</b><br/>                 Repels mosquitoes for 8 hours, deer ticks for 12 hours.<br/>                 4 oz. net wt.<br/> <b>521-370 reg. \$20</b><br/> <b>\$14.99</b></p> | <p><b>B. Pump Spray SPF 30</b><br/>                 Repels mosquitoes for 8 hours, deer ticks for 10 hours.<br/>                 4 fl. oz. <b>255-278</b><br/>                 reg. \$15<br/> <b>\$9.99</b></p> |
| <p><b>C. Family Size Pump Spray SPF 30</b><br/>                 8 fl. oz. <b>255-259</b><br/>                 reg. \$24<br/> <b>\$17.99</b></p>                                                         | <p><b>D. Travel Size Pump Spray SPF 30</b><br/>                 2 fl. oz. <b>943-533</b><br/>                 reg. \$12<br/> <b>\$8.99</b></p>                                                                  |



**Bonus-Size Original Bath Oil**  
Hydrates during or after bath or shower.  
25 fl. oz.  
941-253 reg. \$30  
**\$20.69**

**Original Gelled Body Oil**  
Dries to a silky finish.  
6.76 fl. oz.  
930-575  
reg. \$13  
**\$8.69**



**Original Shower Gel**  
Gently cleanses and hydrates.  
5 fl. oz.  
933-005  
reg. \$8  
**\$5.19**

**Original Replenishing Hand Cream**  
24+ hours of moisturization.  
3.4 fl. oz.  
941-268  
reg. \$5  
**\$2.69**



**Original Beauty Bar Soap**  
Suitable for daily use on face, body and hands.  
3.17 oz. net wt.  
543-110  
reg. \$4.50  
**\$3.49**



**Bonus-Size Original Shower Gel**  
Gently cleanses and hydrates.  
33.8 fl. oz.  
170-731  
reg. \$15  
**\$12.99**



**Botanical Essence Bath Oil**  
With nourishing botanical extracts  
Uplifting herbal scent. 16.2 fl. oz.  
027-253  
reg. \$31  
**\$24.99**



**Soft & Sensual Bath Oil**  
Hydrates during or after a bath or shower. With argan oil. Spicy floral scent.  
16.9 fl. oz.  
941-124  
reg. \$24  
**\$15.99**

**Original Bath Oil**  
Hydrates during or after a bath or shower. With jojoba oil. Fresh herbal scent.  
16.9 fl. oz. 941-105  
reg. \$24  
**\$15.99**



**SKIN SO SOFT** Soft & Sensual with argan oil

**Bonus-Size Soft & Sensual Bath Oil**

Keeps skin hydrated after bath or shower.  
25 fl. oz.  
941-110  
reg. \$30  
**\$20.69**



**Bonus-Size Soft & Sensual Shower Gel**

Gently cleanses and hydrates.  
33.8 fl. oz.  
171-848  
reg. \$15  
**\$12.99**



**Soft & Sensual Shower Gel**

Gently cleanses and hydrates.  
5 fl. oz.  
934-240  
reg. \$8  
**\$5.19**



**Soft & Sensual Beauty Bar Soap**

Skin-nourishing bar soap. Creamy lather. Suitable for daily use on face, body and hands.  
3.17 oz. net wt.  
543-215 reg. \$4.50  
**\$3.49**



**SKIN SO SOFT** Radiant Moisture with argan oil / Fresh & Smooth



**Bonus-Size Radiant Moisture Shower Gel**

Gently cleanses and hydrates.  
33.8 fl. oz.  
171-867  
reg. \$15  
**\$12.99**



**Radiant Moisture Replenishing Hand Cream**

24+ hours of moisturization.  
3.4 fl. oz.  
941-272  
reg. \$5  
**\$2.69**



**Fresh & Smooth Sensitive Skin Facial Hair Removal Cream**

With meadowfoam oil and aloe. Fragrance-free.  
1 fl. oz.  
934-384  
reg. \$10  
**\$5.99**



BATH & BODY

**SKIN SO SOFT** for Acne-Prone Skin

**Skin So Soft  
For Acne-Prone Skin  
Body Pads**  
70 pads.

**Skin So Soft  
For Acne-Prone Skin  
Gentle Body Wash**  
10.1 fl. oz.

**2-PIECE SET**  
**\$26.99**  
**\$50 VALUE**  
785-979



**Skin So Soft  
For Acne-Prone Skin  
Soothing Spot Gel** .5 fl. oz.

**Skin So Soft  
For Acne-Prone Skin  
Foaming Cleanser** 5 fl. oz.

**2-PIECE SET**  
**\$19.99**  
**\$35 VALUE**  
424-534



developed for  
all skin types  
with gently  
exfoliating  
salicylic acid

**Skin So Soft  
for Acne-Prone Skin**

**FOR FACE**

**A. Soothing Spot Gel**  
Skin looks radiant, even-toned. With rosemary, madecassoside and mint extracts. Leave on, dries clear. .5 fl. oz.  
**072-721 reg. \$18**  
**\$13.99**

**B. Foaming Cleanser**  
With plant-based scrub, rosemary, madecassoside and mint extracts. 5 fl. oz.  
**041-647 reg. \$17**  
**\$12.99**

**FOR BODY**

**C. Soothing Gel**  
Helps visibly improve tone and texture. Cooling sensation. With glycerin, allantoin and panthenol. Leave on, dries clear. 6.1 fl. oz. **040-636**  
reg. \$20  
**\$15.99**

**D. Exfoliating Body Wash**  
Nondrying, nonirritating. With rosemary oil. 10.1 fl. oz. **041-556**  
reg. \$20  
**\$15.99**

**E. Gentle Body Wash**  
Nondrying, nonirritating. With rosemary oil. 10.1 fl. oz. **039-325**  
reg. \$20  
**\$15.99**

**F. Body Pads**  
Pre-soaked exfoliating cotton pads. Helps even tone. With hyaluronic acid and panthenol. 70 pads.  
**039-330 reg. \$30**  
**\$24.99**

Suitable for daily use and free of synthetic fragrances.

**NEW**

**AVON SENSES GRATITUDE LAVENDER & CEDARWOOD**  
 Fill your space with the calming and soothing scents of lavender and cedarwood.

**A. Candle**  
 1 wick. Soy-wax blend. 3" diam. 3 1/2" H. Burn time, 40 hours. 7 oz. net wt. **504-686 reg. \$23 \$18.99**

Place candle on trivet or holder before lighting to protect furniture. Never leave burning candles unattended. Keep away from children and pets.

**B. Room Spray**  
 Instantly refresh your home. 3.25 fl. oz. **504-910 reg. \$13 \$10.99**

**C. Air Diffuser**  
 Six diffuser reeds. Fragrance oil, 2.37 fl. oz. **504-724 reg. \$30 \$24.99**

**D. Bath Salts**  
 Pour a handful under warm running water. With sea salt, glycerin and sunflower seed oil. Use 1-3 times a week. 12.5 oz. net wt. **504-557 reg. \$23 \$18.99**

**E. Shower Steamers**  
 Place one on shower shelf and activate with shower steam (avoid heavy stream of water). Each, 1 oz. net wt. **504-428 reg. \$26 \$20.99**  
 six shower steamers



refreshing  
 +radiant

**SPARKLING GRAPEFRUIT & ORANGE BLOSSOM**  
 Energize your body and hands with a juicy mix of zesty grapefruit, bright orange blossom, delicate honeysuckle and luscious peach.

**Hand Cream**  
 With shea butter and antioxidants. 2.5 fl. oz. **852-120 reg. \$6 \$4.99**

**Hand Soap**  
 With moisturizing glycerin. 10.1 fl. oz. **852-115 reg. \$13.99 \$10.69**

**Body Mist**  
 With refreshing aloe vera extract. 8 fl. oz. **034-687 reg. \$18 \$14.99**

Free from parabens, mineral oil, silicone, phthalates and dyes.



## SENSES Fresh Bergamot & Wild Mint / Cozy Vanilla & Coconut

### FRESH BERGAMOT & WILD MINT

A fresh bouquet of dewy flowers mixed with spicy bergamot, clean wild mint and luminous solar musk.



**Hand Cream**  
With shea butter and antioxidants.  
2.5 fl. oz. **852-498** reg. \$6  
**\$4.99**

**Hand Soap**  
With moisturizing glycerin.  
10.1 fl. oz. **852-297** reg. \$13.99  
**\$10.69**

**Shower Gel**  
Coconut-derived cleanser.  
10 fl. oz. **034-873** reg. \$17  
**\$13.99**



### COZY VANILLA & COCONUT

Envelop yourself in a cozy cloud of comforting vanilla, creamy coconut and calming chamomile.

**Hand Soap**  
With moisturizing glycerin.  
10.1 fl. oz. **852-081**  
reg. \$13.99  
**\$10.69**

**Body Mist**  
With aloe vera extract.  
8 fl. oz. **034-888**  
reg. \$18  
**\$14.99**

**Hand Cream**  
With shea butter and antioxidants.  
2.5 fl. oz. **852-096**  
reg. \$6  
**\$4.99**

**Body Scrub**  
With shea butter and olive and avocado oils.  
9 oz. net wt.  
**530-314**  
reg. \$22  
**\$17.99**

Free from parabens, mineral oil, silicone, phthalates and dyes.



## AVON SENSES Bubble Bath / Shower Gel



**Cucumber Melon Bubble Bath**  
Fresh and sweet.  
24 fl. oz.  
**425-067**  
reg. \$11  
**\$8.69**



**Vanilla Cream Bubble Bath**  
Rich and creamy.  
24 fl. oz.  
**425-029**  
reg. \$11  
**\$8.69**



**Cherry Blossom Bubble Bath**  
Flirty and sweet.  
24 fl. oz.  
**425-033**  
reg. \$11  
**\$8.69**



**Orange & Honeysuckle Bubble Bath**  
Fresh and sunny.  
24 fl. oz.  
**047-808**  
reg. \$11  
**\$8.69**



**Endless Ocean Bubble Bath**  
Marine and breezy.  
24 fl. oz.  
**425-048**  
reg. \$11  
**\$8.69**



**Lily & Honeysuckle Blossom Bubble Bath**  
Fragrant and refreshing.  
24 fl. oz.  
**423-394**  
reg. \$11  
**\$8.69**



**Soft Pink Bubble Bath**  
Lilac and rose.  
24 fl. oz.  
**425-052**  
reg. \$11  
**\$8.69**



**Sensitive Skin Bubble Bath**  
Chamomile scent.  
24 fl. oz.  
**424-754**  
reg. \$11  
**\$8.69**



**Lavender Garden Bubble Bath**  
Soft and serene.  
24 fl. oz.  
**424-735**  
reg. \$11  
**\$8.69**



**Blushing Cherry Blossom Hydrating Shower Gel**  
5 fl. oz.  
**462-033**  
reg. \$6  
**\$3.69**



**Silky Vanilla Hydrating Shower Gel**  
5 fl. oz.  
**462-105**  
reg. \$6  
**\$3.69**



**Fresh Cucumber & Melon Hydrating Shower Gel**  
5 fl. oz.  
**462-071**  
reg. \$6  
**\$3.69**



**Juicy Pomegranate & Mango Hydrating Shower Gel**  
5 fl. oz.  
**462-139**  
reg. \$6  
**\$3.69**

**MICROBIOME MOISTURE THERAPY + BALANCE AND SOOTHE**



Body wash has visible capsules for a refreshing cleansing experience.

**Moisture Therapy +Balance and Soothe**

Our advanced microbiome-supporting formulas, with prebiotics and para-probiotics, help to balance and soothe your skin.

**Body Lotion**

Replenishes moisture to leave skin softer, smoother and healthier-looking. 13.2 fl. oz. **438-082** reg. \$25 **\$20**

**Body Wash**

Softens while it gently cleanses. 13.2 fl. oz. **438-078** reg. \$23 **\$18**

**Avon Microbiome by REACH®**

**Hygiene Deodorant Stick**

With prebiotics that help control body odor by helping to keep skin's microbiome balanced. Removes sweat. Dermatologically tested. Suitable for sensitive skin. Floral citrus scent. Aluminum-free. 24-hour odor protection. 2.65 oz. net wt. **524-528** reg. \$13 **\$10.99**



**MOISTURE THERAPY** for a variety of dry-skin conditions

**Extra Strength Cream**

With regular use, relieves the most severe dry skin conditions. 24-hour moisturization. Fragrance-free. **772-972** reg. \$8 **\$5.39**



**Intensive Healing & Repair Hand Cream**

Relieves extremely dry, chapped hands. Moisturizes even through hand washings. Fragrance-free. 4.2 fl. oz. **786-296** reg. \$6 **\$2.69**



**Bonus-Size Daily Skin Defense Body Lotion**

Helps restore moisture to everyday dry skin. 33.8 fl. oz. **611-625** reg. \$20 **\$13.99**



**Bonus-Size Calming Relief Body Lotion**

Instantly soothes and relieves dry, itchy skin. Fragrance-free. 33.8 fl. oz. **611-663** reg. \$20 **\$13.99**



**Bonus-Size Intensive Healing & Repair Body Lotion**

Intense 72-hour moisture for extra-dry skin. Fragrance-free. 33.8 fl. oz. **611-644** reg. \$20 **\$13.99**





# PHYSIOGEL HYPOALLERGENIC

Born in Europe.  
Powered by science.  
Dermatologist-  
recommended worldwide.

**A.I. Cream\* for face**  
Facial cream soothes red, itchy skin associated with dryness with instant and long-lasting relief. 3.3 fl. oz. **096-865** reg. \$42 **\$33.99**



\*The National Eczema Association has awarded the Seal of Acceptance™ to Physiogel Hypoallergenic Calming Relief A.I. Cream and Daily Moisture Therapy Body Lotion and Facial Cream.



**A.I. Face Mask**  
A soothing sheet mask to help calm dry, red, itchy and sensitive skin. With panthenol to help hydrate and improve the look of elasticity, ceramide and squalane to help support skin's moisture barrier and keep skin looking dewy, and antioxidants to help protect skin from environmental irritants. .91 fl. oz. **459-447** reg. \$25 **\$19.99** pack of 5



**Daily Moisture Therapy Body Lotion\***  
For dry and sensitive skin. Lightweight, quickly absorbed lotion with the feel of a light emulsion cream. 6.7 fl. oz. **096-258** reg. \$30 **\$23.99**



**Daily Moisture Therapy Dermo-Cleanser for face**  
Mild and gentle, soap-free facial cleanser for dry and sensitive skin. Appropriate for frequent use, with or without water (can apply with cotton pad). 5 fl. oz. **094-384** reg. \$24 **\$18.99**



## BIOMIMIC TECHNOLOGY™

Works naturally with skin, helping to replenish lost lipids to help strengthen your moisture barrier so your skin feels less dry and sensitive. Clinically proven moisturization.

**Daily Moisture Therapy Facial Cream\***  
Day cream with long-lasting moisture for normal to dry sensitive skin. 5.1 fl. oz. **847-511** reg. \$42 **\$33.49**



**Daily Moisture Therapy Face Mask**  
Moisturizing sheet mask to help skin feel less dry, sensitive and irritated. For instant and long-lasting moisturization. Infused with panthenol to help improve elasticity, ceramide to help strengthen skin's moisture barrier and squalane to help maintain moisture in skin for a dewy glow. .91 fl. oz. **459-490** reg. \$25 **\$19.99** pack of 5





**CBD Dry Body Oil**  
Lightweight. Nongreasy. Quickly nourishes skin with instantly replenishing hydration while it helps reduce redness and soothe irritation so skin looks healthy and radiant. Free of fragrance, mineral oil, parabens, phthalates and THC. 3.73 fl. oz. **408-224** reg. \$37 **\$30**



**CBD Nourishing Body Cream**  
Skin feels soft, smooth and nourished. Jasmine scent. No THC. 5 fl. oz. **524-513** reg. \$33 **\$29.50**



**CBD Soothing & Nourishing Body Cream**  
Concentrated formula. Visibly soothes and smooths. Geranium scent. No THC. 1.7 fl. oz. **524-509** reg. \$33 **\$29.50**



**CBD Nourishing Body Cream (Tube)**  
Same formula as original, now in a convenient tube. Skin feels soft, smooth and nourished. Jasmine scent. No THC. 6.7 fl. oz. **254-229** reg. \$38 **\$33**



**Hemp Seed Oil Lip Balm**  
Hemp-infused lip balm enhanced with moisturizing jojoba and coconut oils for deeply hydrated, naturally conditioned lips. .14 oz. net wt. Clear **957-058** reg. \$2.50 **\$1.69**



**FREE** Veilment Care Lip Balm-Cherry with any Veilment CBD or Hemp Seed Oil purchase, page 140. Offer excludes purchase of lip balms. Limited quantities.



sunless glow

Get a customized sun-kissed tan anywhere... even at home.

**NEW**

**Veilment Lumière Sunless Tanning Serum**  
The more drops, the deeper the tan. Color-correcting technology visibly evens tone. Suitable for different skin tones. Antioxidant-rich with skin-nourishing hemp seed oil. Dermatologically tested, hypoallergenic and vegan. **Light/Medium 422-307** **Medium/Dark 422-326** Each, 1.01 fl. oz. reg. \$24 **\$19.99 each**



Mix and blend into daily body moisturizer for a customized, natural glow.

**HIMALAYA PINK SALT Exfoliating Soap**  
Daily body scrub and cleansing bar, with mineral-rich Himalayan pink salt, walnut shell, apricot seed and cranberry powder. Calming sage scent. 5.3 oz. net wt. **260-440** reg. \$8 **\$6**

**Body Scrub & Cleanser**  
Mineral-rich Himalayan pink salt. Calming sage scent. 13.5 fl. oz. **708-252** reg. \$15 **\$13.69**



**Black Rose Body Scrub & Cleanser**  
French rose oil and apricot-seed powder. Aromatic black rose scent. 13.5 fl. oz. **707-969** reg. \$15 **\$13.69**



**Dead Sea Salt Body Scrub & Cleanser**  
Israeli Dead Sea salt. Energizing citrus-ginger scent. 13.5 fl. oz. **707-988** reg. \$15 **\$13.69**



**ESSENTIALS** Shower Brush / Bar Soaps / Foot Works

**Avon Shower Brush**  
Long handle to easily reach down back. Brush helps to remove dead skin cells as it cleanses. Back of brush features many massage nubs. Non-slip, comfort handle has a convenient hanging hold for easy storing and allows brush to dry quickly.  
**904-727**  
reg. \$10  
**\$7.99**



**Veilment Care Soothing & Relaxing Bar Soap**  
Botanical and floral scent. With lavender oil extract to help calm and soothe. Free from parabens and phthalates.  
Each, 4.9 oz. net wt. **059-937**  
reg. \$8  
**\$6.49 set of 3**



**Veilment Care Moisturizing Bar Soap**  
Derived from olive oil and infused with coconut oil.  
2.8 oz. net wt. **380-864**  
reg. \$2.50  
**\$1.99**



**Foot Works Deodorizing Spray**  
Can also be used in footwear.  
3.5 oz. net wt.  
**313-236**  
reg. \$10  
**\$7.99**



**Foot Works Lavender Softening Balm**  
For spot softening. With vitamin E, jojoba oil, cocoa butter and shea butter.  
1.7 oz. net wt.  
**312-560**  
reg. \$6  
**\$4.99**



**Foot Works Intensive Callus Cream**  
Softens and moisturizes dry, rough skin.  
3.4 fl. oz.  
**312-612**  
reg. \$9  
**\$5.99**



**Foot Works Pedicure Kit**  
Case, 3 1/2" L x 4 3/4" W. Metal, man-made materials.  
**121-029**  
reg. \$11  
**\$8.39**



NAIL CLIPPER

TOENAIL CLIPPER

NAIL FILE

SCISSORS

CUTICLE PUSHER

**Foot Works Pedicure Tool**  
4-in-1 tool! Plastic.  
3 1/8" L x 1 3/4" W x 1/2" H.  
Includes: fine-grain file, metal file, pumice, brush.  
**592-712**  
reg. \$11  
**\$8.39**



**DEODORANTS**

**Perfumed Liquid Deodorant**  
Soft floral scent.  
2 fl. oz.  
**687-681**  
reg. \$6  
**\$4.50**



Candid **836-230**  
Far Away **836-226**  
Haiku **836-264**  
Imari **180-887**  
Rare Gold **836-250**  
Rare Pearls **836-245**  
Night Magic Evening Musk **836-298**  
Odyssey **836-317**  
Sweet Honesty **941-579**  
Timeless **941-583**

On Duty Unscented **926-820**  
On Duty Sport **094-365**  
On Duty Original **925-512**  
Cool Confidence Baby Powder **926-815**  
Feelin' Fresh Original **925-546**

Black Suede **337-403**  
Mesmerize **663-442**  
Wild Country **941-602**

**Roll-On Anti-Perspirant Deodorant** Each, 2.6 fl. oz. reg. \$3.60  
**\$2.69 each**



LIP BALMS



ALL  
LIP BALMS  
99¢  
EACH

**MOISTURE THERAPY LIP BALM**  
Intensive Healing & Repair Moisturizing Lip Treatment Balm  
.14 oz. net wt. **207-949**  
reg. \$2  
**99¢**



**DEW KISS Lip Dew**  
.14 oz. net wt.  
**208-012**  
reg. \$2  
**99¢**



**FMG FLAVOR SAVERS LIP BALM**

Strawberry **208-209**  
Vanilla **209-501**  
Melon **209-334**  
Each, .14 oz. net wt.  
reg. \$2  
**99¢ each**



**VEILMENT CARE LIP BALM**

Infused with naturally moisturizing jojoba oil and coconut oil to keep lips soft and supple all day. Delicately scented and tinted. Each, .14 oz. net wt.  
reg. \$2  
**99¢ each**



Cherry **956-840**

Coconut **140-983**

Strawberry **956-984**

Aloe (grape-flavored) **141-038**

EUTHYMOL uniquely flavored, classic oral care

Loved for over 122 years for its unique wintergreen flavor, this classic oral care brand is formulated to help keep teeth and gums healthy with a blend of anti-plaque and specially refreshing ingredients. Feel the difference!



**Euthymol Toothpaste**  
Fluoride-free. Strong, unique flavor. With ingredients to keep breath fresh and help remove plaque. Recyclable aluminum vintage tube.  
3.7 oz. net wt.  
**295-406 reg. \$10**  
**\$6.99**

**Euthymol Toothbrush Regular**  
Small head with soft bristles reaches the back teeth and is curved to hug gum line for deep and full cleaning.  
**301-150 reg. \$6**  
**\$3.99**

**Euthymol Toothbrush Classic**  
Larger head with soft bristles covers five teeth at a time for fast and efficient cleaning. Curved to hug gum line.  
**301-092 reg. \$6**  
**\$3.99**

**Euthymol Mouthwash**  
Pink jelly formula for long-lasting freshness.  
16.9 fl. oz.  
**301-183 reg. \$13**  
**\$9.99**

**Euthymol Breath Spray**  
Pocket-size mouth spray that keeps breath minty fresh, anytime, anywhere.  
.33 fl. oz. **302-084**  
reg. \$11  
**\$7.99**

REACH® & LISTERINE® FLOSS always remember to floss!

**REACH® Unflavored Waxed Floss**  
Accepted by the American Dental Association. 55 yards. 239-317 reg. \$3 **\$1.99**



**REACH® Mint Waxed Floss**  
*The #1 selling floss from REACH®.* Refreshing mint flavor. Accepted by the American Dental Association. 55 yards. 239-302 reg. \$3 **\$1.99**



**LISTERINE® Cool Mint™ Floss**  
Waxed coating is shred-resistant. Mint flavor for the feeling of clean, fresh breath. 55 yards. 239-355 reg. \$5 **\$3.99**



**LISTERINE® Ultraclean® Mint Floss**  
With patented MICRO GROOVES® technology for greater plaque removal and superior cleaning. 30 yards. 239-321 reg. \$5 **\$3.99**



**LISTERINE® Ultraclean® Access® Mint Flosser Refill**  
Disposable mint-flavored floss heads. For use with the LISTERINE® Ultraclean® Access® Flosser. 239-374 reg. \$7 **\$5.64 pack of 28**

**LISTERINE® Ultraclean® Access® Unflavored Flosser Refill**  
Disposable unflavored floss heads. For use with the LISTERINE® Ultraclean® Access® Flosser. 239-393 reg. \$7 **\$5.64 pack of 28**



## NEW ADVANCED TECHNOLOGY HELPS REMOVE PLAQUE WHERE BRUSHING CAN'T

Recommended by dental professionals.



**REACH® Professional Floss Picks**  
Acute angle (14°), like dental tools, for better reach. Sturdy pick easily fits between teeth. Dented handle for a better grip. Mint flavor. Pack of 90. 630-179 reg. \$6 **\$4.59 pack of 90**



**REACH® Interdental Brush**  
Angled 14°, like dental tools, it helps clean hard-to-reach spots, including back corners. Removes up to 30% more plaque compared to brushing alone! Customized for different spaces between teeth. Specially coated wire for gum protection. Ribbed edge for a better grip. reg. \$5 **\$3.99 each**



**EXTRA TIGHT**  
For extra-tight spaces. Pack of 10. 630-236



**TIGHT**  
For tight spaces. Pack of 10. 630-934



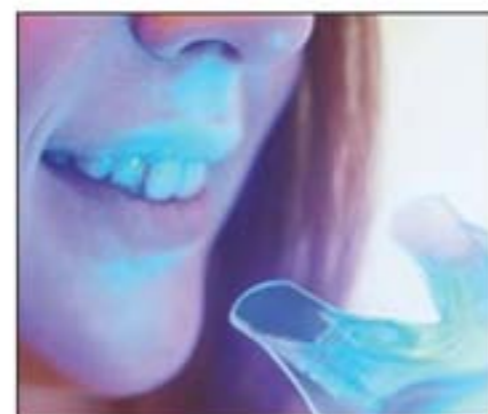
**WIDE**  
For tight to wide spaces. Pack of 10. 630-164



**PERIOE THERA-WHITE** contains hydrogen peroxide



**Instant Whitening LED Light System**  
Use hydrogen peroxide gel with LED light for 10 minutes. Requires two lithium batteries (included). Refill syringe can be purchased separately. Gel, .17 fl. oz.  
**469-315 reg. \$55**  
**\$32.99 the kit**



**Dental Whitening Strips**  
Whitens in just 30 minutes. In 12 days, see whiter teeth for six months. Clear gel strip with hydrogen peroxide. Apple Mint flavor.  
**954-719 reg. \$24**  
**\$19.99**  
box of 20 strips

**Whitening Gel**  
Use 1-2X a day. Can also be used as a refill with LED system. Gel, .17 fl. oz.  
**616-718 reg. \$24**  
**\$9.99**  
lowest price ever



APPLY GEL with syringe. LET DRY for 1-2 minutes. Do not drink or eat for an hour. REMOVE RESIDUE. Brush or rinse.



**Teeth Whitening Pen**  
Clear gel with hydrogen peroxide and an easy-to-use silicone tip. .13 fl. oz. **908-225**  
reg. \$26  
**\$19.99**



**PERIOE Microbiome / White Action / Himalaya Pink Salt**

**Perioe Microbiome Toothpaste**  
With fluoride, plus microbiome technology containing prebiotics to help maintain a healthy oral care balance.



**Sensitive**  
Helps soothe sensitive teeth and fight cavities. With charcoal and propolis extract. Clean Mint flavor. 3.5 oz. net wt. **543-306 reg. \$11**  
**\$8.99**



**Whitening**  
Helps remove stains and brighten smile while fighting cavities. With charcoal and lemon extract. Cool Mint flavor. 4.1 oz. net wt. **543-287 reg. \$7**  
**\$5.99**



**Total Care**  
Helps fight plaque and cavities, and promotes fresh breath. With charcoal and propolis extract. Strong Mint flavor. 5.4 oz. net wt. **543-268 reg. \$6**  
**\$4.99**

FRESH MINT FLAVOR

CAVITY PROTECTION

**NEW**

**Perioe White Action Toothpaste Fresh Mint**

Fluoride-free. With baking soda. Cleanses and helps remove plaque. 5.6 oz. net wt. **735-384 reg. \$2.99**  
**\$1.99**

**Perioe White Action Toothbrush.**

Easy-grip rubber pads. Round-edge, medium bristles. **609-671 reg. \$1.29**  
**99¢**

CLEANS AND WHITENS TEETH

EFFECTIVELY REMOVES PLAQUE AND STAINS

**Perioe Himalaya Pink Salt Toothpaste Pump Ice Mint**  
Creamy paste. Over 2.9X as much toothpaste as the tube. Fluoride-free. 10 oz. net wt. **883-883 reg. \$12**  
**\$10**



**Whitening Essentials  
Toothpaste  
Perioe Black Charcoal  
Clean Mint**

With 10X more activated charcoal (compared to Blanc Charcoal) to help remove stains and brighten teeth. 5.5 oz. net wt. 820-622 reg. \$11 **\$9.19**



**Whitening Essentials  
Toothbrush  
Medium Blanc  
Charcoal**

Infused with activated charcoal to help your teeth look clean and bright. 474-162 reg. \$6 **\$4.80**

**Whitening Essentials  
Toothpaste  
Blanc Charcoal  
Fresh Mint**

With activated charcoal to help remove stains and brighten teeth. 5.5 oz. net wt. 480-460 reg. \$10 **\$8.19**



**Whitening Essentials  
Toothpaste  
Original  
Cool Mint**

With highly effective whitening agents to keep your smile bright. 5.5 oz. net wt. 478-259 reg. \$10 **\$8.19**



**ELASTINE HEMPHARMX**

Vegan formulas. Both silicone-free. Shampoo is sulfate-free. Each, 13.5 fl. oz. reg. \$24 **\$20 each**



Hydrating Shampoo 359-836

Hydrating Conditioner 360-544

**ADVANCE TECHNIQUES**

**360 Nourish with Moroccan Argan Oil Leave-In Treatment**

With nourishing vitamins B and E, moisturizes dry, damaged hair. Infuses it with instant shine, irresistible softness, smooth silkiness and weightless movement. 2 fl. oz. 718-867 reg. \$16 **\$11.69**

**Daily Shine 2-in-1 Shampoo & Conditioner**

Leaves hair feeling clean and conditioned. With pro-vitamin B5 for radiantly healthy-looking shine, silky feel and a sleek, frizz-free long-lasting finish. Suitable for daily use. 11.8 fl. oz. 803-230 reg. \$11 **\$8.99**

**NEW DESIGN  
same formula  
you love**



**ROOTS?  
NEVER.**

Cover grey in seconds and extend time between salon visits.

**SIMULATION**



before touch-up after touch-up



**Root Touch-Up**

An instant way to cover up your roots and bare spots. Built-in mirror. Each, .25 oz. net wt. reg. \$18 **\$15.99 each**

Reddish Brown 243-627	Light Brown 244-642	Black 245-251	Dark Brown 245-213
-----------------------	---------------------	---------------	--------------------



**100% grey coverage and rich, long-lasting color...** without ammonia, parabens, mineral oil or benzophenone. For your most luxurious locks and healthy-looking hair. **No appointment necessary.**

**Elastine Salon de Color**  
reg. \$9.99  
**\$7.99 each**



**BROWNS**

Make faded Brown color vibrant!

**4 / Dark Brown 038-568**



**4B / Dark Chocolate Brown 039-727**



**5B / Medium Maple Brown 041-723**



**5CB / Medium Chestnut Brown 040-110**



**REDS & AUBURNS**

Refresh, brighten or deepen color.

**4R / Dark Mahogany Red 039-750**



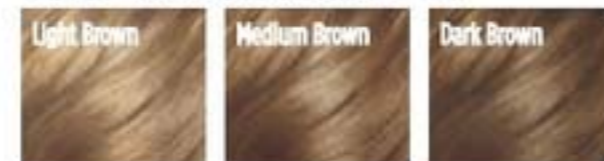
**6R / Light Auburn 044-608**



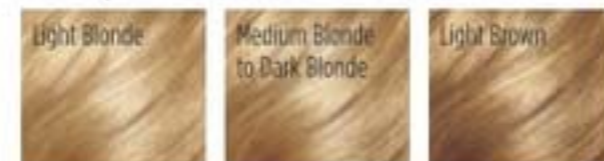
**BLONDES**

Lighten roots or completely color.

**7BL / Natural Dark Blonde 047-827**



**8BL / Medium Golden Blonde 057-475**



**10BL / Extra Light Natural Blonde 058-620**



**BLACKS**

Make an impact for a dramatic look.

**2 / Soft Black 038-553**



# KICK BRASS

Visibly **repair damaged hair.** Keep it looking **vivid & brass-free** with healthy **shine.**



**NEW**

**Elastine Salon de Color Color Vibe**  
Nonirritating formula, suitable for any hair/scalp type.  
Purple Shampoo **436-109**  
Purple Conditioner **436-955**  
Each, 8.4 fl. oz.  
reg. \$17  
**\$13.99 each**



**WHAT'S IN IT**

**VIOLET PIGMENT**  
helps neutralize brassy yellow and orange tones

**CAMELLIA OIL & GREEN TEA EXTRACT**  
help protect and define hair color

- **HYDROLYZED KERATIN**
- **PANTHENOL** • **COLLAGEN**

help repair weakened and damaged hair

**HYALURONIC ACID**  
helps hydrate hair and scalp and reduce frizziness

**APPLE CIDER VINEGAR**  
helps boost radiance





**Elastine PropoliThera**

- Volumizing**  
Enhances texture so hair looks fuller, thicker, stronger. Each, 16.9 fl. oz.  
**A. Shampoo 892-607**  
**B. Conditioner 892-870**
- Damage Repair**  
Helps hair appear smooth and manageable. Each, 16.9 fl. oz.  
**C. Shampoo 893-713**  
**D. Conditioner 893-728**
- E. Hair Oil Serum**  
Helps to strengthen, protect, moisturize and smooth hair, and to add shine while styling. 5.7 fl. oz. **895-190**
- F. Hair Mask**  
Enriched with nutrients to help deeply nourish hair and mend damaged split ends. 10.1 fl. oz. **895-185**  
reg. \$18 each  
**\$15.99 each**



**WHAT'S IN IT:**  
**PROPOLIS**  
(tree sap and beeswax)  
with antioxidants and minerals  
**HONEY**  
helps restore moisture  
**ROYAL JELLY**  
(bee food) helps revive natural luster

+

**4X ANTI-FRIZZ OIL COMPLEX WITH:**  
**MORINGA OIL**  
**JOJOBA OIL**  
**SAFFLOWER OIL**  
**ALMOND OIL**

helps visibly minimize frizz so curly locks look smoother

**Elastine PropoliThera Bee Curly**  
 Bring back healthy-looking locks and visibly boost shine with intensely moisturizing formulas with a patented technology\* that helps care for curly hair to create silky, super-lustrous curls even after the first use.

- Shampoo**  
16.9 fl. oz. **059-975**  
reg. \$29  
**\$23.99**
- Conditioner**  
16.9 fl. oz. **060-846**  
reg. \$29  
**\$23.99**
- Serum**  
5.7 fl. oz. **061-565**  
reg. \$29  
**\$23.99**



\*Shampoo and conditioner only.



**FREE** Elastine PropoliThera Bee Curly Serum with purchase of Elastine PropoliThera Bee Curly Shampoo and Conditioner, page 155. Sold separately on page 155. \$29 value. Limited quantities.

**ELASTINE PROPOLITHERA REJUVENATING** styling boosters



**Aloe Dual-Active Hair Serum**  
Intense hydration with vitamins, minerals and other nutrients to bring damaged or chemically processed hair back to life. 3.4 fl. oz.  
**102-585**  
reg. \$30  
**\$25**



**Leave-In Conditioner**  
Hydrates and nourishes dry hair, infusing it with rich luster. 8.1 fl. oz.  
**102-570**  
reg. \$19  
**\$15**



**Curl Cream**  
Rich hydration for bouncy, defined curls. Reduces frizz for a smooth, healthy-looking shine. 5 fl. oz.  
**102-475**  
reg. \$19  
**\$15**



**Serum Treatment**  
Upon contact with water, nutrient-rich, moisturizing liquid visibly transforms into a creamy formula. 7.8 fl. oz.  
**359-821**  
reg. \$22  
**\$18**



**Volumizing Mousse**  
Helps add lift, bounce and body, and minimizes breakage for a flexible hold with long-lasting style and shine. 5 fl. oz.  
**847-550**  
reg. \$19  
**\$15**



**ELASTINE MOISTURE ESSENTIALS**



**Shine Hair Oil Serum argan oil\***  
Helps to tame frizz, seal split ends for lustrous-looking shine. 2.54 fl. oz.  
**495-144** reg. \$9  
**\$6.99**



\*Does not contain ceramide.

**ceramide + argan oil**  
Helps moisturize and reduce split ends, and keeps locks looking shiny and smooth.

**Shampoo**  
**495-125**  
**Conditioner**  
**495-130**  
Each,  
12.7 fl. oz.  
reg. \$9  
**\$6.99**  
each



**ELASTINE MOISTURE ESSENTIALS**

With richly moisturizing ceramide to help visibly strengthen strands, protect hair from wear and tear, and promote elasticity and shine.



**ceramide + biotin**  
Helps dry, damaged hair look and feel fuller and healthier.

**Shampoo**  
**495-106**  
**Conditioner**  
**495-110**  
Each,  
12.7 fl. oz.  
reg. \$9  
**\$6.99**  
each





## SPRING IS IN THE HAIR!

Shampoo and conditioner in one, with patented 2-in-1 technology, moisturizes hair while controlling odors so it looks and feels fresh and smooth, with a **fragranced formula** to give it a forever-springtime scent. Free of sulfates and parabens. Suitable for daily use.

**Love Me**  
Jasmine and ylang-ylang. 8.45 fl. oz.  
154-857 reg. \$16  
**\$12.99**

**Fresh Citrus**  
Lime, mandarin and basil. 8.45 fl. oz.  
154-876 reg. \$16  
**\$12.99**

**Pure Breeze**  
White rose and Bulgarian rose. 8.45 fl. oz.  
154-861 reg. \$16  
**\$12.99**

**BUY ONE, GET ONE FREE** Elastine Perfume 2-in-1 shampoo of same scent. Page 158. Limited quantities.

## dry hair?

**Cherry Blossom & Hyaluronic Acid**  
Moisturize dry, damaged hair with our hyaluronic acid-infused formula as thirsty strands drink it up.

**Moisturizing Shampoo**  
239-943

**Conditioner**  
240-059

6.7 fl. oz.  
reg. \$4.50  
**\$3.79**  
each



## want volume?

**Rosemary & Sea Salt**

With rosemary to help promote thicker hair and scalp health, sea salt to add body.

**Volumizing Shampoo**  
240-556

**Conditioner**  
246-831

6.7 fl. oz.  
reg. \$4.50  
**\$3.79**  
each



## frizzy hair?

**Argan & Castor**

With nourishing ingredients, helps protect hair from damage and breakage. Adds luster and smoothness.

**Anti-Frizz Shampoo**  
150-866

**Conditioner**  
150-904

6.7 fl. oz.  
reg. \$5.39  
**\$4.49**  
each



**NO** • Parabens • Silicone • Mineral oil  
• Triclocarban • Triclosan



**CHI® ESSENTIALS / CHI® ESSENTIALS REVIVE KERATIN + BONDING**

**CHI® Essentials Replenishing Shampoo**  
Gentle daily shampoo with essential vitamins, minerals and amino acids. No sulfates or parabens, so it won't strip hair of natural oils. Safe for color-treated hair. 12 fl. oz. **589-140 reg. \$20 \$16.99**



**CHI® Essentials Moisturizing Conditioner**  
Lightweight daily conditioner. Infused with aloe to lock in rich moisture. With vitamins A and B to help strengthen hair from roots to ends, increase elasticity and help smooth split ends and frizz. 12 fl. oz. **589-409 reg. \$20 \$16.99**



**CHI® Essentials Repairing Serum**  
Deeply penetrating-yet-lightweight serum helps strengthen, protect, moisturize and smooth. With vitamin A to help seal split ends, and rosemary to help boost volume and shine. 6 fl. oz. **589-413 reg. \$33 \$27.59**



**CHI® Essentials Revive Keratin + Bonding Restoring Shampoo**  
Cleanses, moisturizes and protects against split ends and frizz. 12 fl. oz. **451-192 reg. \$25 \$19.99**

**CHI® Essentials Revive Keratin + Bonding Protecting Serum**  
Apply to damp or dry hair for smoothness and shine, and as a hair shield from the sun. 3 fl. oz. **451-340 reg. \$42 \$34.99**

**CHI® Essentials Revive Keratin + Bonding Restoring Conditioner**  
Helps restore dry, damaged and brittle hair. 12 fl. oz. **451-211 reg. \$25 \$19.99**



**CHI® PRO STYLERS & TOOLS for salon-quality results**

**CHI® ENVIRO 54® Natural Hold Hair Spray**  
For brushable hold. Lightweight. Fast-drying. No build-up. Anti-humidity. Thermal protectant for blow-drying. With silk to help build hair's strength and resilience, and natural botanicals to add volume and enhance shine. Paraben-free. 10 oz. net wt. **908-450 reg. \$26.50 \$21.50**



**CHI® Styling Cream Gel**  
Workable styling cream gel to create sleek styles or enhance natural curls. Light-hold, non-flaking formula that adds incredible shine and control to any style. Enriched with silk to help strengthen hair. 6 fl. oz. **908-479 reg. \$20.50 \$16.80**



**BioSilk® Silk Therapy®**  
Replenishes and reconstructs to help repair and protect all hair types. Tames frizz and flyaways and leaves hair silky smooth with reflective shine. Helps shield hair from UV rays, heat and humidity. 5.64 fl. oz. **011-349 reg. \$35 \$28.99**



**CHI® 1" Volcanic Lava Ceramic Pro Spin 'n' Curl**  
Preset temperature controls with adjustable timers and LED screen display. For any hair type. 12" L. Dual voltage for travel. 11 ft. swivel cord. Use only as directed. **471-527 reg. \$199 \$179**



**CHI® Advanced Ionic Compact Hair Dryer**  
Powerful 1875-watt ion generator emits negative ions to reduce drying time. Lightweight, compact design. Rapid Clean Technology with Blue LED light for cleaner air during styling. Adjustable heat and air-speed settings. Removable filter. 6 1/2 ft. cord. Use only as directed. **471-474 reg. \$150 \$135**



**DR. GROOT** your solution to thinning hair and anti-dandruff

**Scalp Fortifying Serum Treatment**

Moisturizes and helps support healthy hair roots and growth. 6.7 fl. oz. **782-271** reg. \$35 **\$29**



**Scalp Fortifying Hair-Thickening Shampoo**

With coconut oil, cleanses as it helps moisturize dry scalp and hair. 13.5 fl. oz. **778-014** reg. \$35 **\$29**



**Premium Scalp Cleansing Brush**

Helps promote cleansing of residue while massaging to reinvigorate health of scalp as it helps to stimulate circulation. **065-776** reg. \$19 **\$16**



**KEEP SCALP AND HAIR FLAKE-FREE**

**Anti-Dandruff Scalp Care Shampoo**

No silicones. 10.1 fl. oz. **451-412** reg. \$27 **\$21.99**

**Anti-Dandruff Scalp Care 2-in-1 Shampoo and Conditioner**

10.1 fl. oz. **451-431** reg. \$27 **\$21.99**



**DR. GROOT** Gradual Effect

**cover grey the natural way in 3 weeks**

This hair-darkening shampoo and conditioner **darken grey hair gradually** while they **nourish your scalp and hair** with **hydrolyzed collagen** and **biotin**.

**NEW**

**Dr. Groot Gradual Effect for Natural Brown Hair**

Patented color-bonding technology, formulated with gentle, nonirritating ingredients derived from safflower and gardenia, known to visibly relieve hair-loss symptoms. Leaves hair with lasting natural color. For best results, use shampoo and conditioner together. Dermatologist-tested.

**Shampoo** 10.1 fl. oz. **740-432** reg. \$41 **\$34**

**Conditioner** 5.1 fl. oz. **740-447** reg. \$22 **\$18**



**HOW TO USE**

1. Apply shampoo to wet hair and massage from roots to ends.
2. Leave for three minutes.
3. Rinse off until water gets clear.
4. Apply conditioner to wet hair.
5. Leave for three minutes.
6. Rinse off until water gets clear.

**KEY BENEFITS**

- ▶ lifts hair volume from roots
- ▶ with gentle ingredients derived from safflower and gardenia known to visibly **relieve hair-loss symptoms**
- ▶ **nonirritating formula** with no harmful chemicals
- ▶ **darkens grey hair into a natural brown gradually in three weeks!\***

**BEFORE & AFTER**



before



after 1 week use



after 2 weeks use

\*Results may vary depending on how much grey hair you start with and the frequency of use.

# THE WOW DEAL

**5-PIECE SET  
ONLY \$40**

**OVER \$156 VALUE**

827-445

## COLLECTION INCLUDES:

**Isa Knox LXNEW  
Clean 2-in-1  
Exfoliating  
Cleansing Balm**  
3.5 oz. net wt.  
\$30 value

**Anew Platinum  
Night Cream**  
1.7 fl. oz.  
\$42 value

**Isa Knox Anew  
Clinical Line Eraser  
with Retinol  
Targeted Treatment**  
.67 fl. oz.  
\$40 value

**Skin So Soft  
Botanical Essence  
Bath Oil**  
16.2 fl. oz.  
\$31 value

**Avon Senses  
Fresh Bergamot  
& Wild Mint  
Hand Soap**  
10.1 fl. oz.  
\$13.99 value

FRESHEN UP THE LOOK AND FEEL  
OF YOUR SKIN ALL OVER...AND  
DON'T FORGET YOUR HANDS.



Enjoy these special prices and exclusive offers only when you shop with an Avon Representative.

© 2023 The Avon Company. All rights reserved.

**CAMPAIGN 12, 2023**  
THE AVON COMPANY  
165 BROADWAY, NY, NY 10006

To place an order, call:



Pk of 10 59508-9



Single 59507-9

Brochure effective until \_\_\_\_\_

Find me at [www.avon.com/repstore/](http://www.avon.com/repstore/) \_\_\_\_\_



Not applicable in  
Puerto Rico or  
the Caribbean.



See our commitment at  
[www.avon.com/animal-welfare](http://www.avon.com/animal-welfare)

**RETURN POLICY** If you are not satisfied, return any item within 45 days. View Avon's full 45-Day Return Policy at [avon.com/shipping-returns](http://avon.com/shipping-returns).