

AVON

CAMPAIGN 15

**special
gift!**

details inside

what we
love about
SUMMER

+

MAKEUP SALE!

up to 55% off

SUMMER INSPIRATIONS

SUMMER'S HERE AND WE'RE TAKING OUR MAKEUP CUES
FROM EVERYTHING WE LOVE ABOUT THE SEASON!
FROM JUICY WATERMELON TO SUNSETS AT THE BEACH
AND SPARKLING SUN-DAPPLED POOLS TO GOLDEN
SUNSHINE, WHAT'S YOUR SUMMER INSPO?

Featured shades: (Cover model) fmg CathyCat Shadow Gaze Matte Color Stick In Blush and fmg Glimmer Waterproof Eyeliner In Seafoam Green.
(Model on page 3) fmg Glimmer Cream Eyeliner In Blackest Black, Gel Eyeshadow In Firefly and Satin Lipstick In Blaze.

FREE glimmer eye trio

fmg Glimmer Cream Eyeliner
in Blackest Black*

+

fmg Glimmer Longwear
Gel Eyeshadow in Firefly

+

fmg Glimmer Longwear
Gel Eyeliner in Tumbleweed

with any \$25 summer makeup
purchase, pages 4-12. \$33 value.
Limited quantities.



*fmg Glimmer Cream Eyeliner sold separately on page 8.
fmg Glimmer Longwear Gel Eyeshadow and Eyeliner are not sold separately.
Enjoy special prices and offers with an Avon account or Representative.



Passion Red
327-650

B

A

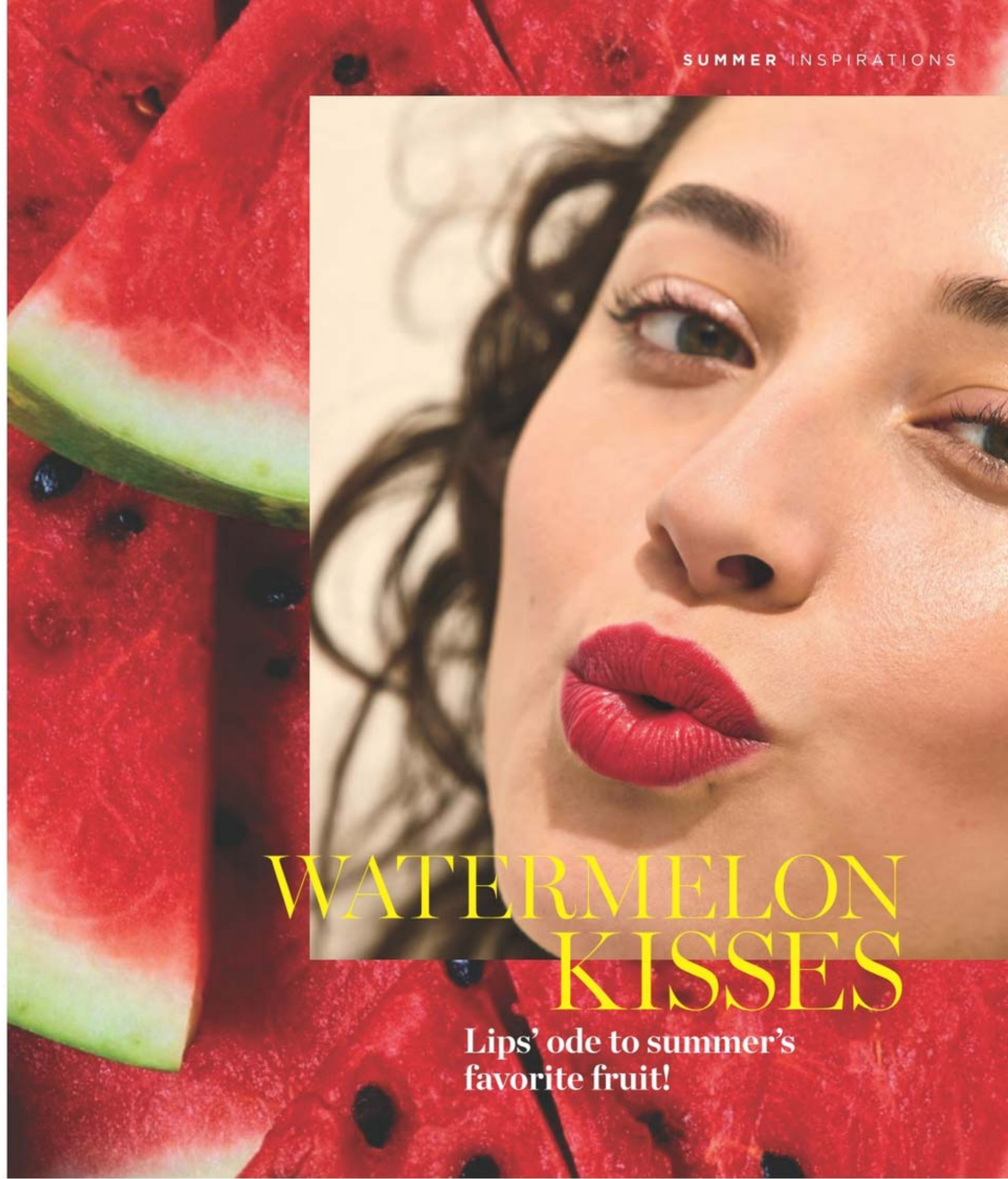
A. fmg Glimmer Lipliner*
Precise application for sculpted lips. Prevents feathering. Matte finish.
.01 oz. net wt. reg. \$9
\$3.49

Honey Peach 327-721	Lava Red 327-740	Passion Red 327-650	Red Brick 330-451
Mystery Mauve 330-538	Candy Apple 327-903	Pink Bouquet 330-356	Merlot 330-284
Au Naturel 330-318	Simply Spice 330-614	Chocolate 330-667	Perfect Plum 330-887

*Packaging may vary.

Earth Angel 886-734	Windstorm 883-845	Desert Moon 449-803
Fog 888-225	Cyclone 890-566	Twilight 449-822
Sierra Sunset 890-805	Equinox 449-818	Luna 895-170
Aster 448-769	Poppy 897-651	Songbird 897-647
Constellation (Shimmer) 449-731	Blaze 896-880	Firebolt 895-443
Aurora 726-584	Hibiscus 898-021	Wild Cherry 449-708
Wildflower 898-040	Rose Angel 897-939	Plum Blossom 449-765
Wildrose 898-533	Eclipse 448-740	Tulip 449-712
Morning Glory 449-750	Celestial 895-352	Violet Night 898-548
Stellar 726-550	Nova 898-552	Dahlia 726-350
	Honeyflower 726-531	

B. fmg Glimmer Satin Lipstick
Lightweight, smooth and creamy formula. Infused with antioxidant pomegranate extract. Buildable medium-to-full coverage. Soft satin finish. .10 oz. net wt.
reg. \$11
\$6.29



WATERMELON KISSES

Lips' ode to summer's favorite fruit!

FREE
glimmer eye trio

Details, page 3.
Limited quantities.



Eyes are a wondrous twilight of bright pinks paired with dusky purple.

WATCHING SUNSETS



A

B



NEW!
Aubergine
786-960

MATTE
Bombshell
741-170

A. fmg Glimmer Eyeshadow Quad
Creamy soft powder formula hugs lids with rich color for all-day wear, without the fallout. Free from parabens and fragrance. Available in Multi or All Matte. .21 oz. total net wt. reg. \$15 **\$7.99**

MATTE Calypso 741-261	MATTE Tigress 741-333	MATTE Bombshell 741-170	MATTE Icon 741-439
MULTI Maven 884-750	MULTI Siren 901-493	MULTI Mistress 883-902	MULTI Temptress 884-731
MULTI Goddess 901-330	MULTI Muse 880-459	MULTI Mixx 885-738	MULTI Darling 880-789
		For Multi Quad finishes, visit Avon.com.	
MULTI Idol 900-975	MULTI Vixen 901-474		

B. fmg CathyCat Shadow Gaze Matte Color Stick
Comfortable, long-wearing formula provides the perfect amount of playtime for blending and building color intensity. Once the shade sets, it will not budge or smudge. .0476 oz. net wt. reg. \$17 **\$13.99**

Buff 956-912	Rosewood 958-547	Azure 959-213	Mauve 958-331	Taupe 958-126	Espresso 958-896
Berry 958-619	Blush 958-638	NEW! Moss 786-540	NEW! Aubergine 786-960	NEW! PeriWink 787-053	NEW! Smokeshow 787-068

FREE
glimmer eye trio

Details, page 3.
Limited quantities.



SUMMER INSPIRATIONS



GLITTER
Peach
Sapphire
469-057

GLITTER
Ultramarine
469-042

A

A. fmg Glimmershadow Liquid Eyeshadow

Long-wearing, no-smudge, no-crease, buildable formula with no messy fallout. Water-resistant. Paraben-, phthalate- and sulfate-free. .07 fl. oz. reg. \$12 \$4.99

- | | | | | |
|---------------------------------------|---|---|--------------------------------------|--|
| | | | | |
| SHIMMER
Rose Gold
469-095 | SHIMMER
Iron Violet
469-061 | SHIMMER
Crystal Lilac
479-040 | SHIMMER
Pink Topaz
479-150 | SHIMMER
Bronze Age
469-100 |
| | | | | |
| GLITTER
Ultramarine
469-042 | GLITTER
Fool's Gold
469-076 | GLITTER
Diamond Dust
478-866 | GLITTER
Peach Sapphire
469-057 | |
| | | | | |
| MATTE
SATEEN
Citrine
451-120 | MATTE
SATEEN
Pink Sapphire
448-591 | MATTE
SATEEN
Tiger's Eye
500-585 | MATTE
SATEEN
Jasper
500-566 | MATTE
SATEEN
Sunstone
434-015 |

B

DIAMOND
Sterling
331-960



- | | | |
|---|---|---|
| | | |
| DIAMOND
Olive
331-940 | DIAMOND
Sterling
331-960 | DIAMOND
Black Ice
331-610 |
| | | |
| DIAMOND
Purple Rain
332-071 | DIAMOND
Twilight
Sparkle
331-553 | DIAMOND
Teal
Sparkle
331-606 |
| | | |
| DIAMOND
Sugar Plum
331-625 | DIAMOND
Brown
Sugar
331-568 | DIAMOND
Smoky
Diamond
331-280 |
| | | |
| CREAM
Blackest
Black
334-366 | CREAM
Cosmic
Brown
334-351 | CREAM
Majestic
Plum
334-313 |
| | | |
| CREAM
Emerald
Green
334-332 | CREAM
Saturn
Grey
334-328 | CREAM
Starry
Night
334-347 |
| | | |
| WATERPROOF
Smoky
Grey
332-162 | WATERPROOF
Blackest
Night
332-143 | WATERPROOF
Midnight
Blue
332-158 |
| | | |
| WATERPROOF
Blue Skies
334-237 | WATERPROOF
Brown
Chocolate
332-124 | WATERPROOF
Raisin
332-200 |
| | | |
| WATERPROOF
Seafoam
Green
334-241 | | |

B. fmg Glimmer Eyeliner*
Long-wearing. Retractable. Each, .01 oz. net wt. reg. \$9 \$3.49 each

Available in
Diamond: Finely milled pearl for a subtle sparkle.
Cream: Soft sheen finish.
Waterproof: Smudge-, transfer-, sweat- and waterproof.

*Packaging may vary.

Eyes sparkle like
sunlight dancing on water.



POOLSIDE
DAZZLE

FREE
glimmer eye trio

Details, page 3.
Limited quantities.



SUMMER INSPIRATIONS

A. fmg Glimmer Lip & Cheek Stain

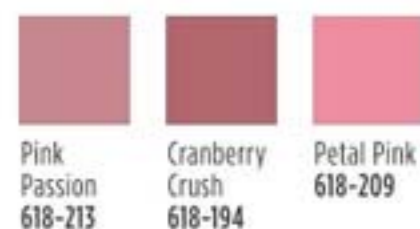
Highly pigmented luminous shades that wear all day. Lightweight gel formula blends and builds like a dream. Brush tip applicator. Transfer-proof. Free from parabens and fragrance. Vegan. .19 fl. oz. reg. \$14 **\$11.99**



Rosette
628-832

B. fmg Glimmer Powder Blush

Richly pigmented, silky pressed powder hugs cheeks. Weightless formula with ultrafine pearl for added dimension and vivid payoff blends effortlessly. Buildable coverage and soft matte finish. With skin-nourishing vitamin E for antioxidant benefits. Free from parabens, phthalates and fragrance. .28 oz. net wt. reg. \$14 **\$9.99**



B

C. fmg Glimmer Be Blushed Cheek Color

Creamy moisturizing formula glides on smoothly without streaking for a natural flush of color. Buildable coverage. Soft dewy finish. With skin-nourishing vitamin E for antioxidant benefits. Free from parabens, phthalates and fragrance. .14 oz. net wt. reg. \$14 **\$10.99**



Petal Pink
618-209

BLUSH
IN
BLOOM

Cheeks blossom with petal-soft hues.

Blushing
Nude
022-911

FREE
glimmer eye trio

Details, page 3.
Limited quantities.





A. fmg Magix Tint Radiant Tinted Moisturizer*
 Buildable coverage with a radiant finish. Lightweight non-drying formula helps even skin tone, boost moisture and blur flaws. With passion fruit, chia and sunflower seed oils and antioxidant vitamins E and B5. Ideal for normal, dry, combination and oily skin. 1 fl. oz. reg. \$14
\$4.99



*Packaging may vary.

B. fmg Illuminating Cushion Corrector
 Adds a dewy glow while hiding dark circles, blemishes and imperfections. Infused with antioxidant vitamins C and E and camellia flower extract. Buildable formula provides sheer-to-medium coverage for a flawless, radiant finish. Free from parabens, sulfates and fragrance. .52 oz. net wt. reg. \$15
\$7.99



C. fmg Glimmer Powder Illuminator
 Finely milled powder creates a multidimensional luminous glow instantly. Lightweight buildable formula with vitamin E builds and blends effortlessly, providing a naturally radiant finish. Free from parabens, phthalates and fragrance. .35 oz. net wt. reg. \$14
\$9.99



**PRIMES,
 PROTECTS
 +
 PERFECTS**



fmg Match Prime Face Perfector
 Flaw-blurring, mattifying primer with SPF 20. Shine-defying microspheres visibly minimize pores and fine lines. Sheer breathable coverage suitable for all skin tones. Soft-focus matte finish. Free from oil and parabens. 1 fl. oz. 932-377 reg. \$14
\$11.49

FREE
 glimmer eye trio

Details, page 3.
 Limited quantities.



GOLDEN HOUR

A back-from-the-beach glow that is the epitome of the perfect summer's day.



SUMMER INSPIRATIONS

Enjoy special prices and offers with an Avon account or Representative.



hello H₂Glo!

New intensely hydrating collection that feels good and is good for you!

GLOKOLOR Clean. Vegan. Hydration.

NEW

Rich serum pampers lips.

fmg GLOKOLOR Lip Serum Pencil
Infused with a burst of peppermint oil, a nourishing lip booster complex and argan oil. Lips feel smooth and refreshed. Free from parabens and fragrance.
.06 oz. net wt.
787-508 reg. \$20 \$16



MAKEUP

NEW

Ultrafine water-based formula awakens skin while locking makeup in place.

fmg GLOKOLOR Hybrid Face Mist
Spritz it anytime, anywhere for an instant boost of moisture to refresh skin. With aloe vera, agave and algae extracts to help soothe and nourish the complexion. Dermatologically tested. Free from parabens and sulfates.
2.7 fl. oz.
787-599 reg. \$24 \$20



NEW

Prep step with instant boost of moisture!

fmg GLOKOLOR Hybrid Face Primer
Light, breathable formula softens the appearance of imperfections while creating a flawless canvas for makeup. With aloe vera, agave and algae extracts to help soothe and nourish the complexion. Dermatologically tested. Free from parabens and sulfates.
1 fl. oz.
787-637 reg. \$24 \$20



**SALE
SHOP
SAVE**
UP TO 55% OFF!



Featured shade:
fmg Glimmer Lip Glaze In Flash.

LIP

Plump your pout instantly.

fmg Glimmer Lip Plumper

Volulip™ plumps, softens and moisturizes lips. Dimensional wet shine. Non-sticky creamy formula with hydrating castor seed oil and antioxidant vitamin E. No stinging or burning, just fuller lips! Shiny gloss finish gives hours of wear without feathering. Universally flattering, brilliant shade. Refreshing peppermint scent. .3 fl. oz.

Brilliance 691-130
reg. \$12
\$7.99



Get your lips ready for prime time!

fmg Glimmer Lip Polish

Sugar-based formula gently buffs away dry, flaky skin for softer, smoother lips. Helps polish and prepare lips for effortless color application. A blend of vitamin E, moisturizing squalane, and extracts of blueberry, strawberry and raspberry leaves lips feeling supple, pampered and kissably soft. .35 oz. net wt. **594-677** reg. \$14
\$5.99



Drench lips in dimensional color and shine.

fmg Glimmer Lip Glaze

Non-sticky creamy formula gives hours of wear without feathering. With antioxidant vitamin E. Buildable sheer-to-medium coverage. .3 fl. oz. reg. \$11

\$4.99



Sheen 691-236



Keep your pout soft and kissable!

fmg Glimmer Lip Conditioner

With mango seed butter, vitamin E, and jojoba and sunflower seed oils. Leaves dry, cracked lips feeling soft and smooth. .12 oz. net wt.

794-578
reg. \$12
\$7.19



A burst of vivid color with a featherlight feel and velvety soft matte finish.

Mattitude Liquid Lip

Weightless, non-drying formula that lasts for hours. Poppy seed oil and vitamin E nourish lips. Paraben-, sulfate- and phthalate-free. .13 fl. oz. reg. \$13

\$8.99



Relentless 750-607



A nude pout for every party.

Birthday Balm Lip Crayon

Butter-soft balm with a sheer color and shine. .1 oz. net wt. reg. \$12

\$8.99



PYT 250-572



**SALE
SHOP
SAVE**
UP TO 55% OFF!



Featured shade:
fmg Glimmer Nail Lacquer In
Black Hole Burgundy

GLIMMER EYE + NAIL

Easy-glide, quick-dry precision felt-tip liner delivers rich color with long-lasting wear.

fmg Glimmer Liquid Eyeliner
Matte finish. Removes with ease using soap and water or makeup remover. Transfer-, sweat- and waterproof. .037 fl. oz.
Blackest Black 354-380
reg. \$12
\$7.99



Unique cap with built-in sharpener!
fmg Glimmer Always On Point Eyeliner*
Smudge- and waterproof. Creamy, smooth formula stays color-true all day. Free from parabens, sulfates and talc. .01 oz. net wt.
reg. \$9
\$5.99

*Packaging may vary.



For natural-looking brows.

fmg Glimmer Brow Definer*
Create fine hair-like strokes. Infused with nourishing castor oil, aiding in hair growth, and coconut oil. Smudge-, transfer-, sweat- and waterproof. Retractable. .01 oz. net wt. reg. \$9
\$3.49



Get mistake-free manis at home.

fmg Glimmer Nail Lacquer Eraser Pen
Glide over nail edges after applying nail lacquer for a clean and perfected manicure. .135 fl. oz. 704-443
reg. \$10
\$7.49



Max shine and vivid color for a salon-worthy manicure that lasts!

fmg Glimmer Nail Lacquer
Gel-like cushion texture. Silky nail-strengthening formula dries down smooth and even for lasting wear that does not chip. No UV light needed. Free from parabens, talc, gluten, phthalates and fragrance. Vegan. Available in satin or metallic pearl finishes. .4 fl. oz. reg. \$10
\$7.99

SATIN
Black Hole
Burgundy
740-648

**SALE
SHOP
SAVE**

UP TO 55% OFF!



BROW + LASHES

Universal clear shade for a professional sculpted look.

fmg Colors of LOVE Hi-Brow Sculpting Brow Gel

Flexible, flake-proof formula. With moisturizing aloe and nourishing hyaluronic acid. Soft matte finish. Tapered micro-brush ensures precise application. Wear alone or over your favorite brow products. Free from parabens, phthalates and fragrance. .11 fl. oz.

Universal Love (Clear)

536-695
reg. \$17
\$12.99



Amp up brows with a sweep of tinted gel for a full, fluffy look.

fmg Colors of LOVE Hi-Brow Tinted Brow Gel

Water-resistant, smudge- and flake-proof formula fills, grooms and shapes for 24-hour wear. With heart-shaped fibers, clay and vitamin E. Soft matte finish. Tapered micro-brush. .11 fl. oz.

reg. \$17
\$7.49



Volumizing and lengthening heart-shaped fibers + intense black pigments.

fmg LOVE at 1st Lash Mascara

Love Complex™ with lycopene, olive oil and vitamin E. Transfer-resistant. Clump-, flake- and smudge-proof. .3 fl. oz.

Blackest Black 698-670
reg. \$15
\$12.99



Lash-hugging heart-, flower- and cylinder-shaped lengthening fibers for voluminous, waterproof wear.

LOVE at 1st Lash Waterproof Mascara

Love Waterproof Complex™ with Lashrez, olive oil and vitamin E. Transfer-resistant. Clump-, flake- and smudge-proof. .3 fl. oz.

Waterproof Blackest Black 293-805
reg. \$15
\$12.99

cobra brush lifts & curls



Super volume.

Avon True Color SuperShock Volumizing Mascara

Instant high-gloss lushness. .338 fl. oz.

Black 533-332
reg. \$11
\$8.99



Waterproof volume.

Wash-Off Waterproof Mascara

Washes off easily with soap and water. .21 oz. net wt.

Black 864-301
reg. \$10
\$7.99



Featured shades: fmg Colors of LOVE Hi-Brow Tinted Brow Gel In Soft Brown and LOVE at 1st Lash Mascara In Blackest Black.

Enjoy special prices and offers with an Avon account or Representative.

**SALE
SHOP
SAVE**
UP TO 55% OFF!



Featured shade:
24 Hour Foundation in Latte.

Good Housekeeping Magazine
2021 Beauty Award Winner.

fmg Cashmere 24 Hour Foundation*
24 hours of comfortable, breathable wear.
Full, flexible coverage. Soft-focus matte finish.
Visibly blurs pores and fine lines for a smoother
complexion. With antioxidant botanical extracts.
Water-resistant. Vegan. 1 fl. oz. **reg. \$32**
\$16.99

CASHMERE FACE

Cannoli (W) 123-734	Nougat (W) 126-107	Meringue (W) 126-202
Buttercream (N) 131-834	Marshmallow (N) 131-849	Strudel (C) 133-660
Macadamia (W) 136-525	Ganache (WO) 136-889	Cappuccino (N) 136-893
Chai (WO) 136-559	Toasty (N) 139-027	Praline (N) 141-406
Tiramisu (W) 137-278	Soufflé (N) 139-730	Muffin (W) 142-307
Gingerbread (C) 142-311	Pudding (N) 146-097	Amaretto (N) 146-188
Latte (W) 147-480	Brownie (WO) 147-461	Hazelnut (W) 147-495
Cognac (W) 147-681	Pecan (N) 149-699	Java (W) 149-722
Clove (N) 149-756	Truffle (C) 150-263	

*Available in Cool (C), Neutral (N), Warm (W) and Warm Olive (WO) undertones.

**Available in Cool (C), Neutral (N) and Warm (W) undertones.

CASHMERE FACE luxury in the shade of you

2-in-1 powder can be worn wet or dry. Use as foundation or setting powder.

fmg Cashmere Compact Powder Foundation**
Buildable medium-to-full coverage. Soft-focus matte finish. Amino-acid-coated pigments control shine. With collagen, lavender oil, and artichoke and chamomile extracts. Includes mirror compact and sponge. .40 oz. net wt. **reg. \$36**
\$15.99

N110 107-830	W110 111-294	W120 111-309	C110 111-313
N120 111-370	W130 111-423	W140 111-514	W150 111-438
W160 111-533	N130 111-548	N140 111-605	W170 111-610
N150 111-658	W180 112-229	N160 112-248	C120 112-286



N150
111-658

Velvety soft-matte color.

fmg Cashmere Cushion Foundation**
Enriched with soothing calendula extract, moisturizing squalane and skin-brightening niacinamide. Helps to cover the look of imperfections. Light-to-medium coverage. Includes sponge puff applicator. Free from parabens, phthalates and fragrance. .42 oz net wt. **reg. \$27**
\$12.19

W215 485-424	C215 485-481	W225 485-439	N225 485-496
C225 485-701	N235 485-500	W235 485-716	W245 486-784
N245 487-264	W255 488-639	N255 488-734	W265 488-749
N265 488-878	W275 488-863	W285 488-882	N275 489-051



W275
488-863

24 hours of comfortable, breathable wear.

fmg Cashmere 24 Hour Concealer*
Full coverage. Soft-focus matte finish. Visibly corrects dark circles and imperfections. With antioxidant botanical extracts. Water-resistant. .20 fl. oz. **reg. \$22**
\$9.99

Sugar (W) 109-484	Mochi (N) 110-761	Parfait (W) 113-058	Macaroon (N) 113-081
Tart (WO) 115-012	Butterscotch (W) 115-156	Waffle (W) 115-869	Biscuit (WO) 116-650
Tres Leches (N) 119-424	Toffee (W) 123-662	Cupcake (N) 123-715	



Tres Leches (N)
119-424

Packaging may vary.

Enjoy special prices and offers with an Avon account or Representative.

**SALE
SHOP
SAVE**
UP TO 55% OFF!

CASHMERE LIP

Good Housekeeping Magazine 2022 Beauty Award Winner

fmg Cashmere Essence Lipcream
Plant-based Bio-Retinol, known for effective anti-aging properties without the harsh irritation, improves lip hydration and protection. With ginseng cell extract, antioxidant meadowfoam seed oil and vitamin E. High-shine finish. .11 oz. net wt. reg. \$22 **\$9.99**

- | | |
|--|---|
| 
Chic Cocoa
881-584 | 
Cherry Rush
876-870 |
| 
Day Dreamer
883-773 | 
Cozy Rosy
879-626 |
| 
Coral Charm
879-148 | 
Honey Mandarin
876-024 |
| 
Pink Lady
879-296 | 
Plush Peony
873-977 |
| 
Summer Berry
881-766 | |



Featured shade: fmg Cashmere Essence in Summer Berry.

Lush color and shine.

fmg Cashmere Rouge Lacquer
High-performance all-day wear. Dual-ended. Full-coverage color dries quickly without feathering. Moisturizing top coat locks color in place for a high-shine finish. Transfer-, smudge- and feather-proof. .20 oz. total net wt. reg. \$22 **\$14.99**

- | | | |
|---|--|---|
| 
Pinkfection
336-919 | 
Ravishing Rose
334-749 | 
Beautifully Bare
334-715 |
| 
Berry Bliss
336-335 | 
Mauvelous
334-681 | 
Stunning Scarlet
334-825 |

Mauvelous 334-681



CASHMERE EYE + BROW

Intense, decadent black shades with dazzling jewel undertones for dramatic results.

fmg Cashmere 24 HR Cream Eyeliner
Comfortable kohl formula with 24-hour wear. Waterproof, matte finish. Smudge applicator to blend. Vegan. Paraben-, phthalate- and fragrance-free. .04 oz. net wt. reg. \$18 **\$9.99**

- | | | | |
|---|---|--|--|
| 
Nightfall
565-451 | 
Pitch Black
565-447 | 
After Dark
566-845 | 
Midnight
566-830 |
|---|---|--|--|



Expertly curated 9-shade palettes to create an array of looks.

fmg Cashmere Eyeshadow Palette
Long-wearing creamy powder shadows in satin, matte and sparkling finishes. Crease- and smudge-proof. Talc-, paraben- and fragrance-free. .63 oz. total net wt. reg. \$40 **\$17.99 each**



Smoother, brighter, flawless-looking eyes.

fmg Cashmere Under Eye Primer
Helps concealer wear all day. Infused with caffeine, green tea extract and vegan collagen, to help diminish the appearance of dark circles, puffiness and fine lines. Free from parabens, phthalates and fragrance. .317 oz. net wt. 010-429 reg. \$22 **\$13.99**



Fills in brows as it boosts color.

fmg Cashmere 24 Hour Brow Pomade
Smudge-proof, sweat-proof formula. Matte finish. Comes with dual-ended applicator with angled-tip brush and spoolie, 4 1/2" L. .14 oz. net wt. reg. \$24 **\$9.99**

- | | | |
|---|---|---|
| 
Blonde
423-710 | 
Light Brown
423-705 | 
Brown
423-356 |
| 
Ash Brown
423-208 | 
Dark Brown
423-227 | 
Black Brown
423-212 |



Lash-building primer that visibly lengthens and boosts volume.

fmg Cashmere Eyelash Primer
Nourishing formula keeps lashes looking healthy and strong with biotin and collagen. Maximizes the performance of any mascara for gorgeous, lush lashes. Vegan. Cruelty-free. .35 fl. oz. 948-391 reg. \$22 **\$13.99**



Sweep primer on lashes, then apply mascara.

Rich black pigmented formula with extreme staying power.

fmg Cashmere Ultimate Volume Mascara
Leaves lashes feeling soft. Won't budge, smudge or transfer. Triple sphere brush hugs lashes. Removes easily. Vegan. .27 fl. oz. Rich Black 153-736 reg. \$22 **\$13.99**



**SALE
SHOP
SAVE**
UP TO 55% OFF!

NEW

Ultrafine felt tip sculpts, fills and shapes brows and enhances your look to perfection.

TPSY Snatched Brow & Freckle Marker
Long-wearing formula. Free from paraben and talc. .01 oz. net wt. **reg. \$15 \$12**



Espresso Martini
860-420

Gloss? Balm? Even better!

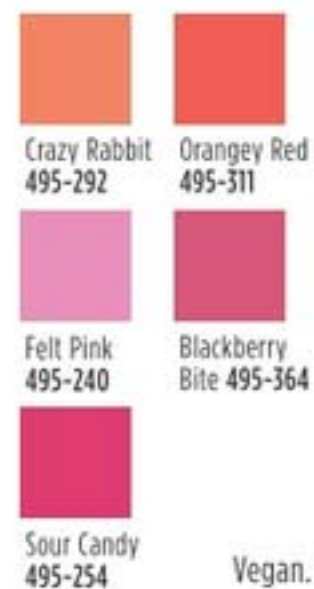
TPSY Drunk Shiny Lip Oil
A deeply moisturizing lip oil that is instantly absorbed with a tint of color and matches every lip. No hassle. No residue. No stickiness. Infused with jojoba, argan and castor oils. Use alone or over your fave Forever Lip Marker. .13 oz. net wt. **reg. \$15 \$9.99**



My Boo
495-216

Get kiss-ready with the perfect partner.

TPSY Forever Lip Marker
Hydrating formula that stays on lips all day. Unique marker design allows for easy application. Kiss-proof. .08 fl. oz. **reg. \$15 \$6.79**



Sour Candy
495-254

A drop of glow!

TPSY I Want to Highlight You Liquid Highlighter
Use as a gloss primer and highlighter, or mix into your makeup to customize your shine! Solar Glow Highlighting Complex formula with moisturizing ingredients and ultra-fine pearls for a subtle dewy finish. 1.01 fl. oz. **reg. \$18 \$10.59**



CATHYCAT

Create a sultry cat-eye look with this rich, long-wearing liquid liner.

fmg CathyCat Nine Lives Precision Liquid Eyeliner
Slim-tip brush delivers a precise line of waterproof and sweat-proof color that will not skip, tug or smudge. .068 fl. oz. **Blackest Black 800-829 reg. \$18 \$10.99**



Perfectly designed false lashes add length, dimension and volume.

fmg CathyCat LushLashes
Vegan. Includes one pair of false lashes and glue. Available in two flirty styles! **reg. \$11 \$6.99 each**



Soft & Sultry
959-304

Fierce & Flared
960-050

No-budge, water-resistant lashes, from dawn to dusk.

fmg CathyCat Play All Day Mascara
Long-wearing mascara coats each lash with rich pigments that will not budge or smudge for nine lives of perfect wear. Nourishing formula with a blend of conditioning coconut and argan oils and lash-supporting panthenol. Removes easily with soap and water. .28 oz. net wt. **Blackest Black 904-712 reg. \$17 \$10.99**



Lengthen, curl and captivate!

fmg CathyCat Curl & Flare Mascara
Long-lasting mascara applies evenly. Uniquely curved brush provides major lift, extraordinary curl and impressive length. Nourishing formula with a blend of conditioning coconut and argan oils and lash-supporting panthenol. .28 oz. net wt. **Blackest Black 901-269 reg. \$17 \$10.99**



Take your brow game to new heights!

fmg CathyCat High Arch Precision Brow Pencil
Long-wearing cream-to-powder pencil glides on smoothly, creating a well-defined look. Waterproof formula stays in place without budging or smudging for perfectly gorgeous brows. .01 oz. net wt. **reg. \$15 \$6.79**



Brown
837-442



**SALE
SHOP
SAVE**
UP TO 55% OFF!



MATCH MAKEUP

Creates an invisible veil that controls shine and sets makeup.

fmg Match Set Finishing Powder
Lightweight mineral-infused loose powder formula diffuses light and visibly blurs pores and fine lines. Silky-soft matte finish never looks cakey. Includes puff applicator. Free from talc, parabens and fragrance. .22 oz. net wt. **932-472**
reg. \$17
\$10.99



Blend of ultrafine rose quartz, ruby and tourmaline.

fmg Match Dust Finishing Powder
Weightless loose mineral powder diffuses light, visibly blurs pores and controls shine. Soft matte finish. With antioxidant green tea extract. Includes no-spill twist-and-lock sifter. Free from talc, oil and parabens. .21 oz. net wt. reg. \$17
\$10.99



Helps control oil and create a shine-free canvas.

fmg Match Blur Oil Control Primer Balm
Sheer mattifying formula. Special blurring powder microspheres help reduce the look of fine lines and pores. With nutmeg extract for antioxidant benefits. Includes sponge applicator. Free from talc and parabens. .59 oz. net wt. **932-381**
reg. \$19
\$10.49



Mineral-infused loose powder and brush in one!

fmg Match Set Finishing Powder To-Go
Creates an invisible veil that controls shine and sets makeup. Lightweight formula diffuses light and visibly blurs pores and fine lines. Silky-soft matte finish never looks cakey. Free from talc, parabens and fragrance. .09 oz. net wt. **227-063**
reg. \$19
\$10.99



Helps camouflage as it corrects and brightens.

fmg Match Corrector Brightening Perfector
Creamy veil of color helps blur flaws and reduce the appearance of fine lines, dark circles and blemishes. Buildable sheer-to-medium coverage with a demi-matte finish. Free from talc, parabens, sulfates, alcohol and fragrance. .11 oz. net wt. reg. \$13
\$7.99



Medium
932-415

**SALE
SHOP
SAVE**


UP TO 55% OFF!

Conceal + Contour +
Highlight

**fmg Match Wand
Foundation Stick**

Instantly blurs and perfects skin. Helps to control oil and shine. Full and flexible all-over coverage in a demi-matte finish. Water-resistant. With shea butter and antioxidant vitamin E. Perfect for easy touch-ups. Free from parabens, sulfates and phthalates. Vegan. .21 oz. net wt. **reg. \$16 \$10.39**

MATCH MAKEUP

 Meringue (N) 594-863	 Marshmallow (N) 594-882	 Coconut (N) 594-897
 Vanilla (W) 594-935	 Macadamia (W) 595-028	 Chai (W) 595-157
 Toasty (N) 595-229	 Cappuccino (W) 595-233	 Tiramisu (W) 595-252
 Amaretto (N) 595-267	 Latte (W) 595-400	 Hazelnut (W) 595-860
 Pecan (N) 595-946	 Truffle (C) 596-297	

Available in Warm (W), Neutral (N) and Cool (C) undertones.

Flexible shades!



Truffle (C)
596-297

Instantly hydrates, blurs and evens tone!

fmg Match Filter Serum Tint Foundation

Lightweight formula infused with hyaluronic acid, vitamin E and a berry complex. Creamy formula transforms to a demi-matte powder finish for a beautiful veil of color. Buildable sheer-to-medium coverage. Suitable for all skin types. Includes sponge applicator. Free from talc, parabens and fragrance. .31 oz. net wt. **reg. \$18 \$12.99**




 Fair 932-491	 Fair Light 932-620	 Light 932-640
 Light Medium 932-654	 Soft Medium 932-783	 Medium Deep 933-153
 Medium 932-836	 Medium Deep 933-153	
 Tan Deep 933-168	 Deep 933-172	



Camouflage imperfections.

fmg Match Wand Correcting Stick

Minimize skin concerns without creasing or caking! With shea butter and vitamin E. Free from parabens, phthalates, and sulfates. .21 oz. net wt. **reg. \$16 \$12.99**

 Gelato: brightens dullness 726-785	 Pistachio: neutralizes redness 726-770
 Sherbet: neutralizes dark circles and marks 726-790	



Pistachio
726-770

DUAL-ENDED BRUSHES & MORE

fmg Kabuki Brush

With soft, angled bristles to effortlessly blend pressed or loose powder formulas. Retractable. Cap keeps the brush head safely covered when not in use. 3 3/4" L x 1" diam. **732-370 reg. \$16 \$10.49**



fmg Flawless Complexion Sponge

With a full rounded bottom for all-over makeup application and blending, and flat side for contouring, highlighting and concealing. 1 1/2" W x 2 1/2" H. 100% PU, latex-free. **140-160 reg. \$9 \$6.99**



fmg Eyeshadow Blending Brush

With a soft, domed crease brush on one end and a flattened, all-over eyeshadow brush on the other to apply and buff eyeshadow. 6" L. **933-320 reg. \$14 \$7.99**



fmg Complexion Blending Brush

With a dense, rounded buffing foundation brush on one end and a precise, rounded concealer brush on the other to create a flawless canvas. 6 1/2" L. **933-210 reg. \$21 \$12.99**



fmg Blush & Contour Brush

With a tapered, oval blush brush on one end and a fluffy, angled contour brush on the other to add color and dimension. 7 1/4" L. **933-259 reg. \$20 \$12.99**



fmg Precision Eye Brush

With an angled eyeliner brush on one end and a pointed pencil brush on the other to highlight or add depth to eyes. 5 1/4" L. **933-187 reg. \$14 \$7.99**



**SALE
SHOP
SAVE**

UP TO 55% OFF!



Our softest reusable
makeup remover cloth ever!

fmg Unready Makeup Remover Cloth
An eco-sustainable alternative to
makeup remover wipes! Dual-sided
cloth makes makeup removal quick
and easy. Short fibers remove
makeup while the longer fibers
gently exfoliate the skin. Travel-
friendly, 100% polyester. 9 7/8" sq.
Machine wash and dry. Imported.
230-176
reg. \$12
\$9.99

MAKEUP MUST-HAVES

fmg Vanity Organizer
Makeup-theme print. Four
compartments with two removable
inside dividers, three outer pockets
and lattice elastic straps. Folds up for
easy storage. 9 1/2" L x 6" W x 5" H.
Polyester. Imported.
022-816 reg. \$30
\$17.99



Daily Beauty Tools Scrunchie Band
Keep your face hair-free while
cleansing your face, applying
a mask or taking a shower
with this soft hair
band. Polyester.
495-178
reg. \$5
\$3.19



fmg Makeup Remover Wipes
Formulated with antioxidant
vitamin E and an extract blend
of aloe, chamomile, cucumber,
marshmallow root and soothing
oat. Leaves skin feeling soft
and clean. Fragrance-free.
Resealable pack of 24 wipes.
333-867 reg. \$9
\$5.39



**Daily Beauty
Tools Tweezers**
Amp up your beauty
routine with angled
tweezers. Stainless
steel. 3 1/2" L.
747-020
reg. \$4
\$2.59



**fmg Oil Rewind
Roller Ball**
Instantly
absorbs oil
and grease and
controls shine
throughout the
day. Reusable
360° rotating
volcanic-stone
roller. Ideal for
touching up
makeup on the
go. 1" W x 3" H.
Plastic handle,
protective cap.
Imported.
508-294
reg. \$16
\$12.99



**fmg Waterproof
Lip & Eye
Makeup
Remover**
Dual-layer
oil and water
remover leaves
skin fresh and
clean. Infused
with moisturizing
blend of ether,
silicone,
hydrocarbon
and ester
oils. Mineral-
, tar-, talc- and
paraben-free.
3.7 fl. oz.
352-243
reg. \$12
\$7.99



**fmg Express
Makeup
Brush Wash**
Alcohol-free
formula.
Contains
soothing aloe
vera and green
tea extract.
Bristles are left
conditioned
with no
leftover
residue.
Convenient
spray
packaging.
1 fl. oz. 141-368
reg. \$12
\$9.99



**Avon
True Color
Makeup Setting
Spray**
Microfine
mist helps set
makeup in
place and dries
quickly to an
invisible finish.
2 fl. oz.
579-382
reg. \$15
\$9.99



Amazon Berry Boost formulas help skin look smoother and firmer, and a new serum is designed to help you see an instant lift.

NEW

Farm Rx Amazon Berry Boost Lifting & Firming Serum

With acai berry, known to help fight the effects of collagen breakdown so skin looks smoother and firmer. 1 fl. oz. 414-499 reg. \$44 **\$32.99**

Farm Rx Amazon Berry Boost Smoothing & Firming Body Cream

With moisturizing and nourishing Brazil nut oil plus murumuru and cupuaçu butters. 5 fl. oz. 027-655 reg. \$25 **\$17.99**



87% natural

85% natural

Skin looks brighter in two weeks*

Farm Rx Pineapple Plus Instant Glow Toner

Revitalizing toner helps visibly minimize pores. Use AM and PM, after cleansing. 5 fl. oz. 027-382 reg. \$25 **\$17.99**

Farm Rx Pineapple Plus Brightening Jelly Serum

Bouncy, lightweight formula helps improve dull, dry skin and reduce the appearance of fine lines, wrinkles and pores so skin looks younger, smoother, more radiant. 1 fl. oz. 027-440 reg. \$44 **\$32.99**

*Clinically shown to significantly improve the appearance of skin brightness after two weeks.



89% natural

86% natural



92% natural

Farm Rx Bakuchiol Cream

Moisturizing cream with bakuchiol, a plant-based alternative to retinol that you can use during the day. Visibly reduces wrinkles. Vegan. Hypoallergenic. Suitable for sensitive skin. 3.04 fl. oz. 004-044 reg. \$44 **\$32.99**



90% natural

98% natural

Farm Rx Bakuchiol Eye Cream

Visibly reduces dark circles, fine lines and wrinkles without irritating the delicate eye area. 1 fl. oz. 565-834 reg. \$37 **\$27.99**

Farm Rx Bakuchiol Serum

Concentrated lightweight oil-textured formula penetrates skin's surface to target fine lines, wrinkles and dullness without irritation. 1 fl. oz. 247-417 reg. \$44 **\$32.99**

FREE Farm Rx Green Goddess Cream with any \$35 Farm Rx purchase, pages 34-37. Sold on page 37. **\$44 value.** Limited quantities.





NEW

Farm Rx Super Greens Refreshing Eye Cream
With naturally nourishing Super Greens formula, plus cucumber extract. Visibly soothes, hydrates and de-puffs eye area. 1 fl. oz.
412-826
reg. \$31
\$22.99



Farm Rx Super Greens Nourishing Cleansing Balm
Helps boost moisture barrier as it dissolves makeup and impurities. For normal, dry, combination, oily and sensitive skin types. 3.3 fl. oz.
516-944 reg. \$41
\$30.99

Farm Rx Super Greens Multivitamin Moisture Cream
Locks in essential nourishing moisture. Use daily after cleansing, serums and treatments. 3.04 fl. oz.
314-141 reg. \$37
\$27.99

Farm Rx Super Greens Cooling Gel
Lightweight moisturizer helps soothe and cool skin. Apply a thicker layer, after serum, as a mask to hydrate overnight as needed. 3.04 fl. oz.
354-227 reg. \$37
\$27.99

Farm Rx Super Greens Refreshing Gel Cleanser
With soothing aloe. Convenient pump. Eco-friendly packaging and glass bottle. Use AM/PM. 8.11 fl. oz. 913-049
reg. \$25
\$17.99

Farm Rx Super Greens Refreshing Gel Cleanser Refill*
Includes two refills. 16.9 fl. oz. 913-053
reg. \$37
\$27.99

*Not shown.



CBD helps calm skin and visibly reduce redness and discomfort so skin looks healthy and radiant.

Farm Rx Green Goddess Cream
100mg CBD. Use AM/PM after serum. For added radiance, follow with Facial Oil. 3.04 fl. oz.
338-027
reg. \$44
\$32.99

Farm Rx Green Goddess High Dose Serum
300mg CBD. Skin feels softer and soothed. Use AM/PM after cleansing, before CBD cream or facial oil to visibly boost results. 1 fl. oz.
338-031 reg. \$50
\$37.99

Farm Rx Green Goddess Facial Oil
100mg broad spectrum CBD. Suitable for sensitive skin. Use AM/PM, after cleansing and serum. Fragrance-free. 1 fl. oz. 287-507
reg. \$50
\$32.99

FREE Farm Rx Green Goddess Cream with any \$35 Farm Rx purchase, pages 34-37. Sold on page 37. **\$44 value.** Limited quantities.



Why lie about your age? Your skin care can do that for you. Look more youthful day after day.



A. Anew Ultimate Multi-Performance Eye System
Visibly smooths crow's-feet and de-puffs under-eye bags. Cream, .5 oz. net wt. Elixir, .09 oz. net wt. 353-254 reg. \$42 **\$24.99**

B. Anew Ultimate Multi-Performance Day Cream Broad Spectrum SPF 25
You'll see wrinkles fade and youthful vibrance return. 1.7 oz. net wt. 156-993 reg. \$42 **\$24.99**

C. Anew Ultimate Night Repair Serum
With peptides, licorice, hyaluronic acid and niacinamide. Diminishes the appearance of fine lines and visibly improves skin tone and texture. Use PM before moisturizer. 1 fl. oz. 625-355 reg. \$45 **\$26.99**

D. Anew Ultimate Multi-Performance Night Cream
It works while you sleep to revive and recreate the look of youthful skin. 1.7 oz. net wt. 157-162 reg. \$42 **\$24.99**

E. Anew Ultimate Supreme Eye Balm
Infused with squalane, sunflower seed oil and antioxidant vitamin E. Moisturizing formula. Wear alone or under makeup. 0.1 oz. net wt. 625-340 reg. \$45 **\$26.99**

Try-It Size!

Anew Ultimate Multi-Performance Night Cream
.5 oz. net wt. 626-222 reg. \$15 **\$8.99**



Anew Ultimate Supreme Dual Elixir
A superior serum with a luxurious blend of oils. Visibly smooths and firms. See a dramatic difference in even advanced signs of aging. Serum/Oil, .67 fl. oz. each. 588-421 reg. \$60 **\$38.99**



**Anew Platinum Day Cream
Broad Spectrum SPF 25**
Fight gravity...or sun damage?
With this cream, you can do both.
1.7 oz. net wt.
120-238
reg. \$42
\$24.99



Anew Platinum Night Cream
Skin appears smoother overnight,
resculpted over time.
1.7 oz. net wt.
610-045
reg. \$42
\$24.99



Go for that low neckline and show off
your youthful-looking décolletage.

**Anew Platinum Firm and Sculpt Cream
for Neck and Chest**
Use PM after cleansing. 1.7 oz. net wt.
147-969 reg. \$42
\$24.99



Try-It Sizes!

Each, .5 oz. net wt.
reg. \$15
\$8.99 each



**Platinum
Day Cream
Broad Spectrum
SPF 25
626-199**



**Platinum
Night Cream
626-127**

Anew Platinum Eye & Lip Cream
This eye cream does double duty.
It smooths and reshapes the area around
eyes and lips, too! Dual applicator.
.5 oz. net wt.
328-072
reg. \$42
\$24.99



Powerful peptides help fight the
visible effects of collagen breakdown
for a more lifted and youthful look.



Anew Platinum Age Delay Serum
With an innovative antioxidant
technology containing niacinamide
(vitamin B3) and panthenol
(pro-vitamin B5) plus peptides.
Use AM and PM before moisturizer.
1 fl. oz.
625-609
reg. \$45
\$26.99



Anew Power Serum
Visibly improves wrinkles,
radiance, firmness and texture.
Use AM and PM after cleansing,
as your treatment before
moisturizing. 1 fl. oz.
417-187
reg. \$45
\$26.99



ISA KNOX LXNEW ULTIMATE / ISA KNOX LXNEW PLATINUM

Isa Knox LXNEW Ultimate Rejuvenating Multi-Balm Stick

With peony extract, plus a firming complex featuring castor oil, moringa and argan oil. Apply to forehead, eyes and neck, or anywhere you want extra care.

.24 fl. oz. **267-593**
reg. \$24
\$19.99



Isa Knox LXNEW Ultimate Rejuvenating Serum

With paeonol and ceramides, visibly improves elasticity, radiance and skin texture, and reduces the appearance of wrinkles.

1.35 fl. oz.
756-624 reg. \$56
\$44.99



Isa Knox LXNEW Ultimate Rejuvenating Day Cream

With paeonol, visibly reduces wrinkles and improves the look of elasticity, radiance and skin texture. With nutmeg to help visibly even skin tone.

1.7 fl. oz.
351-892
reg. \$50
\$39.99



Isa Knox LXNEW Ultimate Rejuvenating Eye Serum

Infused with paeonol and niacinamide to help visibly reduce fine lines around the eye area and depuff under-eye bags.

1 fl. oz. **567-177**
reg. \$50
\$39.99



Isa Knox LXNEW Ultimate Rejuvenating Dual Night Cream

With paeonol and macadamia oil. Volume Cream: Rice bran extract helps visibly plump skin. Firming Cream: Helps boost collagen and elastin.

Each,
.85 fl. oz.
564-015
reg. \$50
\$39.99



With glossy oil for silky-smooth lips.

Isa Knox LXNEW Ultimate Rejuvenating Tinted Lip Balm

Wear alone or over lipstick. .12 oz. net wt. Red **010-452**
reg. \$25
\$19.99



Isa Knox LXNEW Platinum Sculpting Day Cream

Infused with moisturizing hibiscus extract and smoothing ceramide. Visibly tightens facial contours.

1.7 fl. oz.
318-845
reg. \$50
\$39.99



Isa Knox LXNEW Platinum Sculpting Night Cream

With firming hibiscus extract, ceramide, squalane and shea butter. Skin looks firmer, smoother and more defined.

1.7 fl. oz.
318-850
reg. \$50
\$39.99



Isa Knox LXNEW Platinum Sculpting Oil Serum

Hibiscus extract-infused serum, with collagen-boosting peptides and rejuvenating antioxidants. Skin looks firmer and more lifted.

1.35 fl. oz.
318-720
reg. \$56
\$44.99



Isa Knox LXNEW Platinum Sculpting Eye Cream

With hibiscus extract, panthenol and antioxidants. Leaves the delicate eye area looking firmer, brighter, more defined.

.84 fl. oz.
318-883
reg. \$50
\$39.99



Isa Knox LXNEW Platinum Sculpting Neck and Chest Cream

With hibiscus extract, ceramide, shea butter, panthenol and squalane to help vulnerable skin along the neck and chest appear firmer, smoother and lifted.

1.7 fl. oz.
548-069
reg. \$50
\$39.99



MISSION LUXEREVE unparalleled luxury for your skin

Mission Luxereve Lotion

Lightweight hydration ideal for normal skin type. Improves the appearance of elasticity and firmness, and helps even tone and texture. Use AM/PM, after Mission Luxereve Serum. In AM, follow with sunscreen.

3.77 oz. net wt.
713-459
reg. \$95
\$80



Mission Luxereve Cream

Perfect for dry skin. Enriched with luxurious oils and other moisturizing ingredients, for a more youthful, sculpted appearance. Use AM/PM, after Mission Luxereve Serum. In AM, follow with sunscreen.

1.76 oz. net wt.
635-740
reg. \$350
\$280



Mission Luxereve Serum

A deluxe regenerating serum formulated to help boost skin elasticity and firmness. Use AM/PM, after Mission Luxereve Essence and before moisturizing with Mission Luxereve Cream.

1.01 fl. oz.
635-754
reg. \$225
\$180



Mission Luxereve Regimen Trial Kit

Deluxe skin care collection includes try-it size of new lotion, plus favorite mini sizes:

- **Try-it-size Serum** .23 fl. oz.
- **Try-it-size Foaming Wash** .5 fl. oz.
- **Try-it-size Lotion** .67 fl. oz.
- **Try-it-size Cream** .17 oz. net wt.

127-930 reg. \$34
\$28 the kit



FREE

Mission Luxereve Try-It-Size Cream (.17 oz. net wt.) with any Mission Luxereve purchase, page 43.

Not sold separately. Limited quantities.

SKIN CARE COLLECTIONS save on all your faves

CLEANSE & MOISTURIZE #1 SET

Try-It-Size
belif the true cream
aqua bomb
.84 fl. oz.

belif aqua bomb
hydrating body moisturizer
10.1 fl. oz.

Herb Day 365 Amino Acid
Cleansing Foam - Peony
5.7 fl. oz.

3-PIECE SET
\$45.99
OVER \$71 VALUE
070-179



HANDS, FACE & LIPS SET

Silicone Glove
Protective Hand Cream
3.4 fl. oz.

Isa Knox Anew Solaire
Active Face & Body Protection Lotion
Broad Spectrum SPF 50
2.7 fl. oz.

Anew Vitamin C
Antioxidant Lip Treatment
.13 oz. net wt.

3-PIECE SET
\$21.99
\$51 VALUE
655-380



CLEANSE & MOISTURIZE #2 SET

Herb Day 365 Master Blending
Facial Foaming Cleanser -
Lemon & Grapefruit
5.7 fl. oz.

Rice Water Bright
Cleansing Facial Wipes
50 sheets.

Calendula Essential Moisture Serum
1.35 fl. oz.

3-PIECE SET
\$14.99
OVER \$29 VALUE
257-911



SERUMS FOR FACE & LASHES SET

Anew Clinical Unlimited Lashes
Lash & Brow Activating Serum**
.10 fl. oz.

Isa Knox LXNEW Ultimate
Rejuvenating Serum
1.35 fl. oz.

2-PIECE SET
\$34.99
\$116 VALUE
063-898

**Anew Clinical Unlimited Lashes
is not intended to reverse or
reduce hair loss or grow hair.



TREATMENT MASKS PLUS SET

The Face Shop The Solution
Advanced Face Masks
Includes three masks:
• Brightening • Nourishing
• Pore Care

Jeju Volcanic Lava
3-Step Impurity-Removing
Nose Strip Kit
Includes three strips.

re:tune Inner Beauty
Hydration*
20 packets.

5-PIECE SET
\$25.99
\$38 VALUE
419-950

*Not intended to diagnose, treat, cure or prevent any disease.



SOOTHE, MOISTURIZE & LIFT SET

Farm Rx Green Goddess
Facial Oil
1 fl. oz.

Try-It-Size
Anew Platinum Day Cream
Broad Spectrum SPF 25
.5 oz. net wt.

Try-It-Size
Anew Power Serum
.23 fl. oz.

3-PIECE SET
\$27.99
OVER \$75 VALUE
063-720





Isa Knox Anew Clinical Line Eraser with Retinol Targeted Treatment
In just one week, the look of deep lines is smoothed and resurfaced. Use PM. .67 fl. oz. **729-397 reg. \$40 \$23.99**

Isa Knox Anew Clinical Line Eraser with Retinol Treatment
Great for first-time retinol users. Use AM/PM. 1 oz. net wt. **729-382 reg. \$45 \$27.99**

Isa Knox Anew Clinical Collagen Booster Eye Lift Pro Dual Eye System
With a peptide complex to help boost skin renewal. In one week, eye area looks lifted, firmer and tighter. Gel, .33 fl. oz. Cream, .33 fl. oz. **729-435 reg. \$40 \$23.99**



Isa Knox Anew Clinical Collagen Booster Microneedling Polisher
At-home alternative to micro-dermabrasion and micro-needling procedures. Visibly diminishes pores, fine lines and wrinkles. Skin looks smoother and more radiant. 1.7 fl. oz. **798-592 reg. \$34 \$19.99**



Isa Knox Anew Clinical Line Eraser with Retinol [1.0%] Advanced Retinol Serum
Our highest dose of retinol. Dramatically reduces the appearance of fine lines, wrinkles and dark spots. 1 fl. oz. **390-751 reg. \$50 \$39.99**



100% showed clinical improvement of fine lines and wrinkles in one week, with increased results over time.

Isa Knox Anew Clinical Collagen Booster Rejuvenating Serum Ampoules
Powerful peptide blend boosts skin renewal. 60 capsulated single-use ampoules. 0.08 fl. oz. each. **803-077 reg. \$62.50 \$49.99**



Isa Knox LXNEW Clinical Booster Microbiome Balance
Visibly reduces redness in 15 minutes so skin looks healthier. 1 fl. oz. **727-978 reg. \$40 \$23.99**



Isa Knox Anew Clinical Revitalize & Reveal Resurfacing Lotion for Body
Exfoliates with gentle yet effective AHA lactic acid. Moisturizes with shea butter. 5 fl. oz. **390-785 reg. \$34 \$19.99**



Isa Knox Anew Clinical Revitalize & Reveal Advanced Wrinkle Corrector
In just two weeks, wrinkles appear reduced. 1.7 fl. oz. **729-401 reg. \$40 \$23.99**



Isa Knox Anew Clinical Revitalize & Reveal Intensive Peel
An intensive resurfacing peel similar to pro acid peels. With AHA and PHA. 1 fl. oz. **780-025 reg. \$45 \$27.99**



Isa Knox Anew Clinical Revitalize & Reveal Extra Strength Retexturizing Peel
Results similar to a 35% pro glycolic peel.* 30 fragrance-free pads. 2" diam. **729-420 reg. \$40 \$23.99**

*In 6 out of 8 attributes tested over a 7-week period.



Anew Vitamin C Overnight Lip Mask

Leave-on lip mask, with vitamin C and shea butter, leaves lips looking smoother and more supple overnight. .7 oz. net wt. **157-689 reg. \$34 \$14.99**



Anew Vitamin C Overnight Radiant Mask

Visibly improves texture and boosts radiance. Apply after cleansing, treating and moisturizing. 1.7 fl. oz. **157-086 reg. \$36 \$19.99**



Anew Vitamin C Brightening Serum
Skin is visibly energized and brightened with the power of 10% pure vitamin C. 1 fl. oz. **936-406 reg. \$44 \$24.99**

NEW

Anew Vitamin C Nourishing Body Butter
With hydrating shea butter and sodium PCA, enriched with niacinamide, helps restore radiance with vitamins C and E to defend against free radical damage. Uplifting fruity-floral and citrus scent. 7.8 fl. oz. **443-767 reg. \$32 \$17.99**

NEW

Anew Vitamin C Glow Body Scrub
Sugar-based formula, with pineapple and papaya enzymes and coffee seed extract, exfoliates dry, dull skin, while a blend of sunflower seed oil and sweet almond oil replenishes moisture. Refreshing citrus scent. 9 oz. net wt. **443-752 reg. \$36 \$19.99**



Anew Vitamin C Illuminating Priming Moisturizer
With natural citrus extracts. Wear alone or under makeup. 1.7 fl. oz. **868-508 reg. \$34 \$18.99**

Anew Vitamin C Brightening Eye Cream
Visibly reduces dark circles. Leaves under-eye area looking brighter and more even-toned. .5 fl. oz. **868-512 reg. \$34 \$18.99**

Anew Vitamin C Antioxidant Lip Treatment
Nourishes lips with vitamins C and E. .13 oz. net wt. **784-547 reg. \$14 \$7.99**



Anew Vitamin C Illuminating Body Serum
Light-reflecting pigments leave skin looking luminous. 6.7 fl. oz. **157-071 reg. \$34 \$19.99**



100% mineral sunscreen with no white cast!

NEW

Isa Knox Anew Solaire Everyday Mineral Face Protection Cream Broad Spectrum SPF 50
Lightweight formula with zinc oxide. Suitable for sensitive skin. Water-resistant (40 minutes). 1.7 fl. oz. **437-143 reg. \$29 \$22.99**



Isa Knox Anew Solaire Everyday Face Protection Lotion Broad Spectrum SPF 50
Creamy lotion formula. Wear alone or under makeup. 1.7 fl. oz. **154-914 reg. \$29 \$22.99**



Isa Knox Anew Solaire Active Face & Body Protection Lotion Broad Spectrum SPF 50
Water-light formula glides on smoothly all over face and body. 2.7 fl. oz. **154-948 reg. \$31 \$24.99**



Anew Hydra Fusion Gel Cream
Skin appears smoother, refreshed and plumped with lasting hydration. 1.7 oz. net wt. 283-736 reg. \$34 \$18.99

Anew Hydra Fusion 1.5% Hyaluronic Acid Serum
With three different molecular sizes of HA that reach multiple layers of skin's surface to visibly plump skin. 1 fl. oz. 568-408 reg. \$44 \$24.99



Anew Hydra Fusion Cleansing Micellar Water
Gently lifts dirt, oil and makeup while boosting hydration. No need to rinse off. 10.1 fl. oz. 284-933 reg. \$14 \$8.99



Anew Skinvincible Deep Recovery Cream
Lessens the look of age damage in weeks. Use PM. 1 oz. net wt. 462-822 reg. \$40 \$23.99



Avon Solutions Anti-Aging Cream
Moisturizing formula works to visibly smooth the appearance of fine lines and wrinkles. 1.7 fl. oz. 906-681 reg. \$13 \$7.99



Avon Solutions Banishing Cream Skin Discoloration Improver
Visibly improves skin tone. 2.5 fl. oz. 463-374 reg. \$10 \$7.99



Avon Solutions Nurtura Replenishing Cream
Adds moisture to dry skin. 1.7 fl. oz. 161-070 reg. \$10 \$7.99



normal to dry skin
Nourishing Cream Cleanser
With panthenol (vitamin B5), rosemary and soapwort extracts. Removes impurities and makeup while restoring moisture. 5 fl. oz. 717-990 reg. \$12 \$9.99



oily to normal skin
Soothing Whipped Oil Cleanser
Amino acid-based ingredients derived from coconut eliminate impurities and excess oil. With panthenol (vitamin B5) and aloe. 5 fl. oz. 718-025 reg. \$16 \$12.99



normal, dry and combination skin
Balancing Gel Cleanser
Gel to foam. With panthenol (vitamin B5). Amino acid-based ingredients derived from coconut help remove oil and impurities while rebalancing skin. 5 fl. oz. 718-010 reg. \$12 \$9.99



normal, dry, combination and oily skin
2-in-1 Exfoliating Cleansing Balm
Melts away makeup and impurities. With panthenol (vitamin B5) and bamboo stem powder. Spatula included. 3.5 oz. net wt. 718-006 reg. \$30 \$24.99



Avon Care Silicone Glove Protective Hand Cream
Lasting protection from dryness. 3.4 fl. oz. 366-887 reg. \$6 \$2.69





Jeju Aloe Fresh Soothing Foam Cleanser
Gentle gel-to-foam formula hydrates as it cleanses. With soothing aloe, moisturizing panthenol and other refreshing herbal extracts such as cica, camellia leaf, licorice root and rosemary. 5 fl. oz. **450-090**
reg. \$11.99
\$9.99

Jeju Volcanic Lava 3-Step Impurity-Removing Nose Strip Kit
Three-step kit includes three strips to help open pores, soften sebum and refine skin.
TO USE: After cleansing, use three strips in each different step as directed. **411-519** reg. \$2
\$1.60



Jeju Aloe Fresh Soothing Mist
With 90% aloe vera extract. Oil-free. Instantly soothing and cooling. After cleansing, spray wherever skin feels dry. 4.4 fl. oz. **925-379**
reg. \$16
\$12.99



Jeju Aloe Fresh Soothing Gel
With 95% aloe vera extract, instantly hydrates and soothes dry, sensitive skin. Infused with other soothing herbal extracts, like chamomile, lemon balm, rosemary and lavender. For face and body. 10.1 fl. oz. **984-304** reg. \$8
\$6.99



Jeju Aloe Fresh Ice Soothing Gel
3-in-1 gel with aloe vera extract. Use as moisturizer, soothing after-sun care or facial pack. Refrigerate for enhanced cooling. Apply to dry, sensitive, irritated areas of face and body. 10.1 fl. oz. **925-402** reg. \$11
\$8.99



FREE Jeju Volcanic Lava 3-Step Impurity-Removing Nose Strip Kit with any \$20 The Face Shop purchase, pages 52-57. Sold separately on page 52. Limited quantities.



Herb Day 365 Amino Acid Facial Foaming Cleanser
Vegan mild hypoallergenic cleanser with cica. Formulated for optimal pH balance. For a moisturized and comforted feeling without tightness, even after cleansing. Each, 5.7 fl. oz. **reg. \$11.50**
\$9.60 each

Peony
Helps visibly boost skin clarity and helps hydrate and soothe skin. **546-229**

Aloe
Helps moisturize and soothe dry, itchy skin. **544-393**

Herb Day Cleansing Tissue
Removes makeup and impurities. With soapwort, lady's mantle, lily, chamomile and cornflower. 20 sheets. **280-670**
reg. \$2
\$1.60
70 sheets. **134-450**
reg. \$5.75
\$4.80



Herb Day 365 Master Blending Facial Foaming Cleanser
Formulated with naturally derived herbal and fruit extracts, and coconut-derived moisturizing ingredients. Free of synthetic colorants and parabens. Each, 5.7 fl. oz. **reg. \$5.25**
\$4.40 each



Mung Bean & Mugwort
For trouble-prone skin. Rich in essential minerals to help keep skin visibly smooth and clean. **135-093**



Lemon & Grapefruit
For oily skin. Helps to remove impurities and makeup residue. Skin feels refreshed. **134-666**



Aloe & Green Tea
For dry skin. Skin feels hydrated and soothed, even after cleansing. **134-647**

THE FACE SHOP Rice Water Bright

Double Cleanse for optimal results! Start with a new **Cleansing Lotion or Oil**. Follow with another Rice Water cleanser.



NEW

Rice Water Bright Light Facial Cleansing Oil
Removes every trace of makeup and gently cleanses impurities on skin. With jojoba oil and rice water extract, known to visibly brighten and moisturize skin. 5 fl. oz.
720-199 reg. \$14
\$11.99

Rice Water Bright Facial Cleansing Lotion
Rice bran oil helps brighten skin. Gently removes makeup and impurities. 6.7 fl. oz.
720-184 reg. \$12
\$9.99

Rice Water Bright Mild Cleansing Water
Removes makeup and impurities with micelles, so no need to rinse off! Use with cotton pad. 16.9 fl. oz.
288-360 reg. \$14.40
\$12



NEW

Smaller Size! Rice Water Bright Foaming Cleanser
Same formula as the 10 fl. oz. Rice Water Bright Foaming Cleanser in a more convenient size. 5 fl. oz.
478-479 reg. \$8
\$6.49



A. Rice Water Bright Facial Massage Cream
With rice water, enriched with vitamins, ceramide and minerals. Use after cleansing 2-3 times a week. 6.7 fl. oz.
450-200 reg. \$24
\$19

B. Rice Water Bright Foaming Cleanser
Light whipped foam. Cleanses and moisturizes. With rice water and soapwort extract. Skin looks clear and bright. 10 fl. oz. 508-093 reg. \$13
\$11

C. Rice Water Bright Rice Bran Gentle Exfoliating Cleanser
Daily scrub with organic rice bran powder, rice bran oil and hydrated silica. 10 fl. oz. 376-865 reg. \$15.99
\$12.99

D. Rice Water Bright Cleansing Facial Wipes
Great on the go. With rice extract to moisturize while cleansing. Removes eye makeup. 50 sheets. 508-108 reg. \$11
\$9



FREE Jeju Volcanic Lava 3-Step Impurity-Removing Nose Strip Kit with any \$20 The Face Shop purchase, pages 52-57. Sold separately on page 52. Limited quantities.



THE FACE SHOP Calendula Essential Moisture / Rice & Ceramide

Calendula Essential Moisture
Daily skin care for irritated and sensitive skin. With moisturizing calendula extract, a soothing herb complex, and the ultimate hydrator, hyaluronic acid.

A. Serum
A moisturizing and soothing serum that helps calm skin and enhance hydration. 1.35 fl. oz. 980-533 reg. \$13.50
\$11.20

B. Eye Cream
A lightweight, non-greasy, moisturizing and soothing eye cream. .67 fl. oz. 409-823 reg. \$12.50
\$10.40

C. Cream
A moisturizing cream that instantly hydrates while it gently helps soothe dry, itchy, irritated skin. 1.69 fl. oz. 465-400 reg. \$13.50
\$11.20



Rice & Ceramide Moisturizing collection
With eco-friendly mineral-enriched exfoliating rice extract and rice bran. With ceramide to help skin retain moisture.

D. Toner
A balancing and moisturizing toner. AM and PM, use after cleansing, before serum and moisturizer. 5 fl. oz. 124-142 reg. \$8.25
\$6.80

E. Emulsion
Replenishes moisture instantly and for hours. Semi-liquid consistency. AM and PM, use after cleansing or toning and before serum, moisturizer. 5 fl. oz. 876-976 reg. \$8.25
\$6.80

F. Cream
Moisturizing cream that helps give skin a visibly translucent and healthy glow. AM and PM, use after cleansing, toning and serum. 1.69 fl. oz. 124-635 reg. \$9.25
\$7.60



G. Rice & Ceramide Trial Kit
Moisturizing skin care set replenishes and refreshes your look. Try all three, or to use as a complete travel kit. Three-piece boxed mini sizes. Includes: Toner, 1.15 fl. oz.; Emulsion, 1.15 fl. oz.; Cream, 0.34 fl. oz. 543-617 reg. \$8.75
\$7.20 the kit

Enjoy special prices and offers with an Avon account or Representative.



Give your hands a moment of scented bliss

NEW

Daily Moment Vegan Hand Cream
Deeply moisturizing daily vegan hand cream with a long-lasting scent. Eco-friendly and vegan-certified. Each, 1.0 fl. oz. reg. \$4
\$3.29 each

1-Sunrise Bedroom
Bergamot, lavender and cedarwood. **741-940**

2-Morning Florist
Lemon, Bulgarian rose and violet leaf. **741-955**

3-Noon Park
Grapefruit, hyacinth and iris. **754-636**

4-Sunset Rooftop
Pear, rose and patchouli. **757-931**

5-Midnight Street
Cassis, rose and amber. **762-334**

6-Dawn Attic
Orange blossom, pimento and vetiver. **762-353**



FREE Jeju Volcanic Lava 3-Step Impurity-Removing Nose Strip Kit with any \$20 The Face Shop purchase, pages 52-57. Sold separately on page 52. Limited quantities.

The Face Shop Rich Hand V Special Care Hand Mask
Coated masks contain nourishing lotion with sunflower seed oil and urea for instant moisturization. Two disposable masks, one for each hand. **541-724**
reg. \$4
\$3



The Face Shop Smile Foot Exfoliating Cream
A unique 2-in-1 daily foot exfoliating cream that removes dead skin cells as it soothes skin. With naturally moisturizing urea, which leaves feet feeling soft and hydrated. 4 fl. oz. **535-426**
reg. \$11.99
\$9.99



The Face Shop Smile Foot Mask
Disposable foot mask, with naturally moisturizing urea, shea butter and collagen, for baby-soft feet! Refreshes with peppermint oil. Contains two masks, one for each foot. **535-957**
reg. \$4.79
\$3.99



The Face Shop The Solution Advanced Hydrating Face Mask
With hyaluronic acid, which holds 1,000 times its weight in water to help skin look youthfully plumped and baby-soft. **624-966** reg. \$3
\$2.50



The Face Shop The Solution Advanced Brightening Face Mask
With pearl powder (a beauty secret of Cleopatra), for a healthy-looking, luminescent glow. **624-970**
reg. \$3
\$2.50



The Face Shop The Solution Advanced Pore Care Face Mask
With tannic acid, a natural astringent that helps reduce shine and visibly shrink pores. **624-947**
reg. \$3
\$2.50



The Face Shop The Solution Advanced Firming Face Mask
With marine (hydrolyzed) collagen, helps reduce the appearance of wrinkles and visibly restore firmness and radiance. **624-932**
reg. \$3
\$2.50



The Face Shop The Solution Advanced Nourishing Face Mask
With antioxidant-enriched propolis extract (tree sap, bee food and beeswax) to restore the look of healthy vitality to tired skin. **624-951** reg. \$3
\$2.50





**explosive hydration...
all over!**



BELIEVE IT!
3 steps in 1
balm → cream → oil
melts away makeup and impurities
while cleansing skin with hydration

**aqua bomb
makeup removing
cleansing balm**
*For dryness, dullness
& uneven texture*
Gently removes all traces of
makeup in one step. Smooth and
refreshing like sherbet. With lotus
flower and marshmallow root, herbs
known to help boost moisture and
radiance. No oily residue. For a
double cleanse, follow with
aqua bomb jelly cleanser. 3.3 fl. oz.
**443-179 reg. \$46
\$38**

belif believe in truth
**Aqua bomb
hydrating body moisturizer**
With skin brightening niacinamide
Instantly hydrates with a
soft, lightweight gel texture*
Leaves skin feeling
smooth, not sticky?
Mineral oils
Synthetic
fragrances
Synthetic
organic dyes
Animal origin
ingredients
Dermatologically tested
With 2 Napiers formulae,
hyaluronic acid, niacinamide
*The numbers represent percentage
of ingredients added

BELIEVE IT!
93%
**of people agreed
skin appears smoother***

*Based on a clinical study.

aqua bomb hydrating body moisturizer
For dryness, dullness & uneven skin tone
A favorite lightweight gel moisturizer,
with lady's mantle, an herb known for its
antioxidant and soothing benefits—now
for your body. Intense hydration for
visibly firmer, clearer and brighter skin.
Silky finish. For all skin types. 10.13 fl. oz.
**443-040 reg. \$36
\$30**

SKIN CARE



belif believe in truth 50 ml / 1.68 fl. oz.
The true cream - aqua bomb
Increased hydration level* 70%
Dermatologically tested
**With Napiers' classic formula, Napiers original formula*

**the true cream
aqua bomb**
*For dryness, dullness
& uneven texture*
Water-based refreshing
gel-cream cools and hydrates.
Full size, 1.68 fl. oz.
**235-709 reg. \$42
\$38**
Try-it size, .84 fl. oz.
**235-713 reg. \$24
\$22**



belif believe in truth 50 ml / 1.68 fl. oz.
The true cream - moisturizing bomb
Clinically-proven* to retain
moisture for up to 26hrs
Dermatologically tested
**With Comfrey leaf, Napiers moisture formula, Napiers original formula*

**the true cream
moisturizing bomb**
*For dryness, loss of
elasticity & firmness*
Creamy, cushiony, whipped
texture, envelops skin
with intense moisture.
Full size, 1.68 fl. oz.
**948-463 reg. \$42
\$38**
Try-it size, .84 fl. oz.
**498-139 reg. \$24
\$22**



belif believe in truth aqua bomb
The true cream - aqua bomb aloe
Soothing and hydrating
formula with aloe vera!
Dermatologically tested
With Aloe Vera's classic formula, Napiers original formula

**the true cream
aqua bomb aloe**
*For redness, irritation
& dryness*
Moisturizing gel-cream
with aloe vera extract to
instantly soothe skin, plus
hydrating hyaluronic acid
and smoothing vitamin E.
1.69 fl. oz.
**788-284 reg. \$42
\$38**



BELIEVE IT!
96%
 of people said
 their skin felt
 hydrated
 after cleansing*

aqua bomb jelly cleanser
 For dryness, dullness
 & uneven texture
 Jelly to foam. Amino
 acids and glycerin-based
 cleansing agents gently
 cleanse. 5.41 fl. oz.
445-353 reg. \$35
\$30

*Based on a consumer study
 after a week of use.



BELIEVE IT!
26 hours
 of moisture
 around
 the eye area**

moisturizing eye bomb
 For dryness, loss of elasticity & firmness
 Lightweight, refreshing eye cream cools on
 contact. Helps keep eye area looking firm,
 resilient and smooth. .84 fl. oz.
445-478 reg. \$53
\$48

**Based on a clinical study.



**the true serum
 resurfacing
 PHA/AHA 10%**
 For dullness &
 uneven tone & texture
 Exfoliators help
 visibly improve tone
 and texture. With
 energizing honeysuckle.
 Apply after cleansing,
 before any belif
 moisturizer. 1.69 fl. oz.
927-769 reg. \$55
\$45

**aqua bomb
 hydrating toner**
 For an extra boost
 of hydration
 Lightweight water-
 based toner, with
 hyaluronic acid,
 honeysuckle flower
 extract and baobab
 tree seed extract.
 Leaves skin looking
 soft and smooth with
 a healthy-looking glow.
 Use after cleansing,
 before serum and
 moisturizer. 6.75 fl. oz.
952-974 reg. \$36
\$30



**aqua bomb
 sleeping mask**
 For dull, dry,
 fatigued skin
 Unique
 jelly-pudding
 texture! Skin
 feels replenished
 overnight.
 Explosive
 hydration
 for smoother
 skin and a
 healthy glow.
 2.53 oz. net wt.
514-717
reg. \$42
\$38



Enjoy special prices and offers with an Avon account or Representative.



**Avon Pure
 Diffuser**
 LED light-up
 diffuser with
 three different
 settings releases
 a fine mist of
 essential oil and
 water into the
 air. 6 1/2" H. USB
 connection.
915-424
reg. \$39
\$32



AVON PURE ROLL-ON ESSENTIAL OILS
 Transform your day wherever you go.
 Contains sweet almond oil, a carrier oil.

De-Stress With lavender and peppermint. .34 fl. oz. 098-963 reg. \$24 \$19	Aches Away With peppermint and rosemary leaf extract. .34 fl. oz. 100-420 reg. \$24 \$19	Outdoor Friend With lemon eucalyptus and lemongrass extracts. .34 fl. oz. 598-869 reg. \$24 \$19
--	--	--

AVON PURE ESSENTIAL OILS
 Use with Avon Pure Diffuser. Not for use on skin.

Lavender
 Calms and
 soothes. Helps
 with balance
 and restfulness.
 .34 fl. oz.
098-710
 reg. \$28
\$23



Eucalyptus
 Refreshes
 the mind.
 Rejuvenates
 the senses.
 .34 fl. oz.
098-724
 reg. \$21
\$17



Happiness
 Infuse the air
 with joy and
 exhilaration.
 With grapefruit,
 lemon and
 sweet orange.
 .34 fl. oz.
098-906
 reg. \$21
\$17



Citronella
 Helps you enjoy
 the outdoors (and
 indoors, too). No
 harsh chemicals.
 .34 fl. oz.
598-945
 reg. \$24
\$19



**AVON PURE
 SET**
Eucalyptus
 .34 fl. oz.
Happiness
 .34 fl. oz.
**2-PIECE
 SET**
\$24.99
\$42 value
063-424



FREE re:tune Inner Beauty Restful Sleep with any \$30
 re:tune or Avon Pure purchase, pages 61-63.
 \$25 value. Sold separately on page 63. Limited quantities.

re:tune

INNER BEAUTY*

Feel good on the inside so you can look great on the outside.

ANTI-AGING ANTIOXIDANTS

Neutralize free radicals and defend skin from the look of aging



NEW

re:tune Inner Beauty Youth Boost
With ingredients that help improve the clarity and hydration of skin while boosting antioxidant levels to help skin better defend itself from the look of aging.* 60 tablets.
456-137
reg. \$34
\$28

Enjoy special prices and offers with an Avon account or Representative.

RE:TUNE Inner Beauty



re:tune Inner Beauty Hair, Skin & Nail Health
Promotes a healthy response to skin stressors while helping build healthy hair, skin and nails.* 60 tablets.
396-908
reg. \$42
\$33



re:tune Inner Beauty Clear Complexion
Supports a visibly clear, even complexion. Helps balance the gut microbiome.* 30 capsules.
123-332
reg. \$36
\$30



re:tune Inner Beauty Be Calm
Helps enhance your ability to stay calm and focused.* 30 vegetarian capsules.
123-567
reg. \$38
\$31



re:tune Inner Beauty Metabolism Boost
A natural, plant-based energy and metabolism booster that helps you burn more calories.** 60 vegetarian capsules.
907-195
reg. \$35
\$28



re:tune Inner Beauty Collagen Booster
Supports healthy collagen production for firmer-looking radiant skin.* Add one scoop to water, juice or coffee. Unflavored.
2.65 oz. net wt. (75 g)
906-901
reg. \$69
\$56



re:tune Inner Beauty Plant Protein Powder**
A delicious, non-GMO plant-based shake with 21 grams of protein. Includes probiotics and enzymes for easy digestion.* Vegan, gluten-free, soy-free, no sugar added. 15 servings per canister.
Creamy Vanilla 332-473
Rich Chocolate 332-488
reg. \$49
\$39 each
**Not sold in California.



re:tune Inner Beauty Restful Sleep
A natural, non-habit-forming supplement to help you get your beauty sleep and wake up refreshed.* 60 vegetarian capsules.
006-487
reg. \$25
\$20



re:tune Inner Beauty Hydration
Supercharge your water for optimal hydration and more energy, and to boost skin health. Contains electrolytes, B vitamins and antioxidants.* Berry flavor.
20 packets.
966-140
reg. \$27
\$22



re:tune Inner Beauty Hunger Block
Helps reduce your food cravings for hours.* 60 vegetarian capsules.
906-920
reg. \$31
\$25



re:tune Inner Beauty HydraBoost
Helps boost hydration and visibly soften lines with hyaluronic acid.* 30 vegetarian capsules.
122-761
reg. \$34
\$28

Rich Chocolate Protein Powder**
15 servings.
Metabolism Boost
60 capsules.
2-PIECE SET
\$47.99
\$84 value
063-367



*These statements have not been evaluated by the Food and Drug Administration. This product is not intended to diagnose, treat, cure or prevent any disease. **With reduced dietary intake and exercise.



FREE re:tune Inner Beauty Restful Sleep with any \$30 re:tune or Avon Pure purchase, pages 61-63. \$25 value. Sold separately on page 63. Limited quantities.

introducing

RÊVE EN CUBE

MISTY GREEN



Explore an enchanting space where fantasy blooms, romance is uninhibited and true beauty comes to life.



NEW

**Rêve en Cube
Misty Green
Eau de Parfum**
soft floral

Get lost in a field of dreams, where lush greenery is surrounded by uplifting notes, creating a serene escape. 3.4 fl. oz. **850-863**
reg. \$70
\$59

Top: Bergamot, Grapefruit, Mandarin, Lemon

Mid: Neroli, Jasmine, **Lily of the Valley**

Dry: **White Musk**, Vetiver, Amber Wood

NEW

**Rêve en Cube
Lying on a Cloud
Eau de Parfum**
fresh green floral

Feel like you are floating on a cloud where dreams and desires are fulfilled and magical notes envelop your senses. 3.4 fl. oz. **696-109**
reg. \$70
\$59

Top: Lemon, Mandarin, **Ethereal Freesia**

Mid: **Sweet Mimosa**, Magnolia, Jasmine, **Lily of the Valley**

Dry: Cedar, Musk



FREE LYRD Peony Rosé Eau de Parfum with any Réve en Cube fragrance purchase, page 65. \$24 value. Sold separately on page 80. Limited quantities.

ADVENTURE *is a state of* **MIND.**

Wherever you go, find your own **PATH**
and explore it with **JOY.**



NEW

LIMITED EDITION

HaiKu Sunrise
Eau de Parfum
woody floral

Revel in the beauty of
the early morning light
with brilliant solar notes.
1.7 fl. oz. **091-500**
reg. \$25
\$17.99

Top: Wild Fig, Watermelon,
Madagascar Black Pepper

Mid: **Fresh Coconut Water,**
Sweet Rhubarb, Marine Accord

Dry: **Warm Cedarwood,**
Cashmere Wood, Amber

My star word is

TRANQUILITY.



Haiku
fresh green floral
Japanese yuzu, delicate muguet
and blonde woods.

**A. Intense
Travel Spray**
3 fl. oz. 880-353
reg. \$16
\$12.99

B. Hair & Body Mist
3.25 fl. oz. 572-574
reg. \$16
\$11.99

**C. Intense Luxury
Body Crème**
5 fl. oz. 806-239
reg. \$23
\$18.99

**D. Original
Eau de Parfum**
1.7 fl. oz. 601-030
reg. \$25
\$18.99

**E. Intense
Eau de Parfum**
1.7 fl. oz. 097-110
reg. \$31
\$25.99



**A. Haiku
Sacred Intense
Eau de Parfum**
fruity floral
Uplifting tangerine,
rose de mai and
earthy driftwood.
1.7 fl. oz. **579-750**
reg. \$31
\$25.99

**B. Haiku
Sacred Intense
Luxury Body Crème**
5 fl. oz. **580-000**
reg. \$23
\$18.99

**C. Haiku Reflection
Eau de Parfum**
fresh green floral
Radiant water accord,
acacia blossom and
amber wood.
1.7 fl. oz. **617-657**
reg. \$25
\$18.99

**D. Haiku Kyoto Flower
Original Eau de Parfum**
fresh green floral
Violet leaf, white peony
and soft cotton musk.
1.7 fl. oz. **144-352**
reg. \$25
\$18.99

**E. Haiku Kyoto Flower
Intense Eau de Parfum**
1.7 fl. oz. **578-811**
reg. \$31
\$25.99



FRAGRANCE SETS save on all your faves

SET INCLUDES:

Haiku Reflection Eau de Parfum
fresh green floral
Radiant water accord, acacia
blossom and amber wood. 1.7 fl. oz.

Haiku Intense Eau de Parfum
fresh green floral
Japanese yuzu, delicate muguet
and blonde woods. 1.7 fl. oz.

2-PIECE SET
\$18.99
\$56 VALUE
269-505



SET INCLUDES:

Haiku Reflection Eau de Parfum
1.7 fl. oz.

**Haiku Kyoto Flower Intense
Eau de Parfum**
fresh green floral
Violet leaf, white peony and
soft cotton musk. 1.7 fl. oz.

2-PIECE SET
\$18.99
\$56 VALUE
267-244



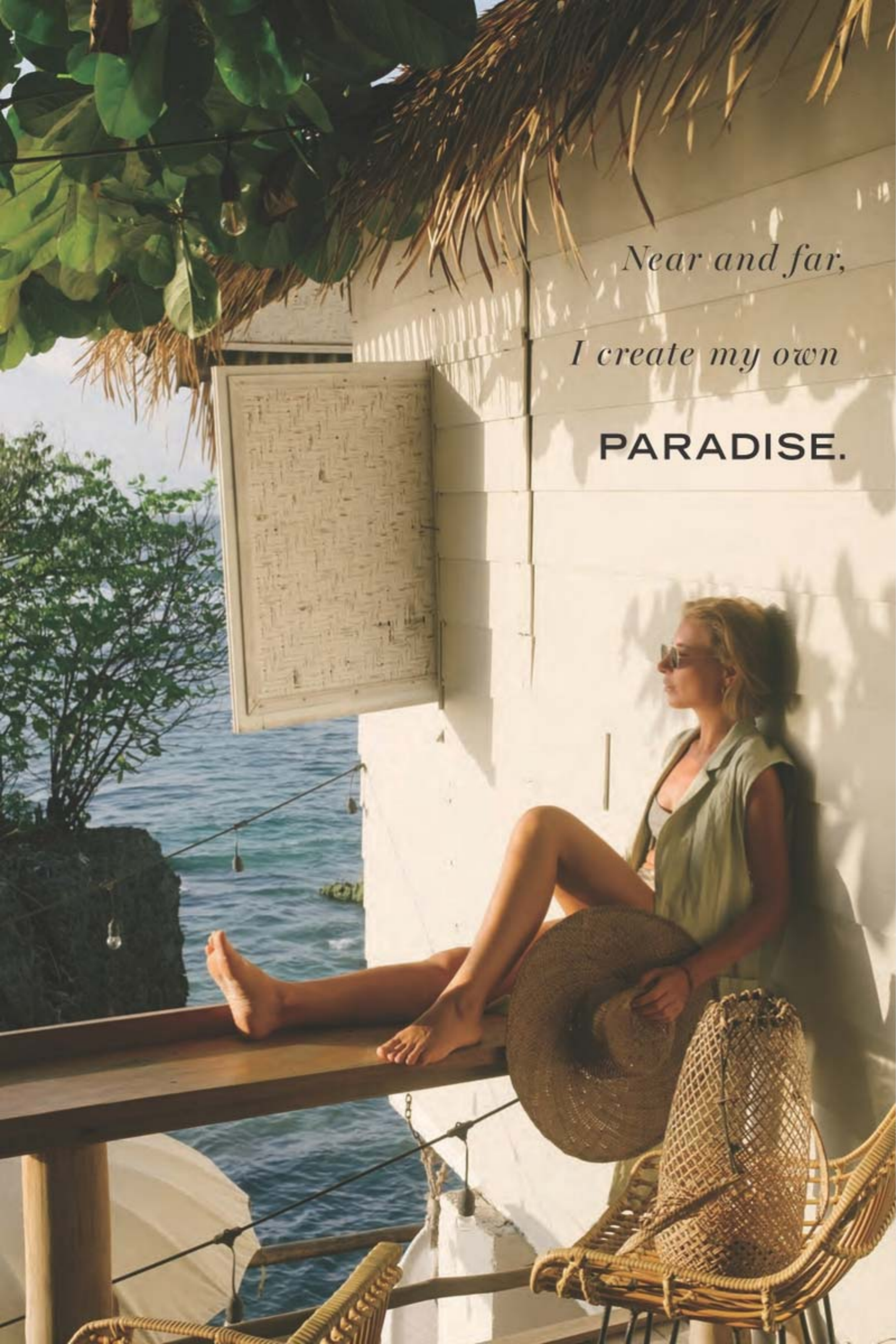
SET INCLUDES:

Haiku Reflection Eau de Parfum
1.7 fl. oz.

Haiku Sacred Intense Eau de Parfum
fruity floral
Uplifting tangerine, rose de mai and
earthy driftwood. 1.7 fl. oz.

2-PIECE SET
\$18.99
\$56 VALUE
265-859





*Near and far,
I create my own*
PARADISE.

**A. Far Away
Shimmering Body Mist**
amber floral
Freesia, sheer jasmine
and enticing amber.
3.25 fl. oz.
618-945
reg. \$20
\$15.99

**B. Far Away Intense
Eau de Parfum**
1.7 fl. oz.
931-332
reg. \$31
\$25.99

**C. Far Away
Intense Luxury
Body Crème**
5 fl. oz.
806-300
reg. \$23
\$18.99

**D. Far Away
Hair & Body Mist**
3.25 fl. oz.
572-536
reg. \$16
\$11.99

**E. Far Away Bali
Eau de Parfum**
fruity floral
Sparkling grapefruit,
salted tuberose
and golden amber.
1.7 fl. oz. 451-389
reg. \$25
\$18.99

**F. Far Away Original
Eau de Parfum**
1.7 fl. oz.
685-712
\$25 each

**GET 2 FAR AWAY
ORIGINALS
ONLY \$40
\$50 VALUE**
850-170



Enjoy special prices and offers with an Avon account or Representative.

I need room to

ROAM.

**A. Far Away Infinity
Intense Eau de Parfum**
fruity floral
Radiant bergamot,
jasmine sambac
and sandalwood.
1.7 fl. oz. **931-495**
reg. \$30
\$24.99

**B. Far Away Infinity
Original Eau de Parfum**
1.7 fl. oz. **318-481**
reg. \$25
\$18.99

**C. Far Away Gold
Eau de Parfum**
amber floral
Ylang-ylang,
Indian jasmine and
Madagascar vanilla.
1.7 fl. oz. **685-727**
reg. \$25
\$18.99

**D. Far Away
Beyond Intense
Luxury Body Crème**
woody floral
Alluring jasmine,
fresh orange
blossom and
warm tonka bean.
5 fl. oz. **932-711**
reg. \$23
\$18.99

**E. Far Away Beyond
Intense Travel Spray**
.3 fl. oz. **811-727**
reg. \$16
\$12.99

**F. Far Away Beyond
Intense Eau de Parfum**
1.7 fl. oz. **932-726**
reg. \$31
\$25.99



Meet me at **LOVE**
and **PASSION.**



Imari Eau de Toilette
amber floral
Italian bergamot,
tempting jasmine
and amber. 1.7 fl. oz.
871-496 reg. \$25
\$18.99



Imari Seduction
Eau de Toilette
amber floral
Wild berries, hypnotic
purple orchid and
patchouli. 1.7 fl. oz.
452-897 reg. \$25
\$18.99



Imari Amor
woody floral
Rich black currant,
precious orris and
warm musk.
Eau de Parfum
1.7 fl. oz.
762-573 reg. \$25
\$17.99
Travel Spray
.3 fl. oz.
091-863 reg. \$14
\$9.99

A. Rare Pearls Intense
Eau de Parfum
soft floral
Shimmering magnolia,
white pepper and
creamy rosewood.
1.7 fl. oz.
783-297
reg. \$31
\$25.99

B. Rare Pearls
Hair & Body Mist
3.25 fl. oz.
572-851
reg. \$16
\$11.99

C. Rare
Gold Intense
Eau de Parfum
amber floral
Mandarin zest,
ylang-ylang
and golden
amber. 1.7 fl. oz.
784-126
reg. \$31
\$25.99

D. Rare Pearls
Shimmering
Body Mist
3.25 fl. oz.
618-911
reg. \$20
\$15.99

E. Rare Amethyst
Eau de Parfum
fruity floral
Passionate plum
with violet and
rich sandalwood.
1.7 fl. oz.
933-062
reg. \$25
\$18.99

F. Rare
Platinum Intense
Eau de Parfum
amber floral
Iris, warm ambrette
and smooth vetiver.
1.7 fl. oz.
787-660
reg. \$30
\$24.99

G. Rare Pearls Original
Eau de Parfum
1.7 fl. oz.
933-120
reg. \$25
\$18.99





Dreamlife Cologne
soft floral
Mimosa flower,
aspirational rose
and glowing amber.
1.7 fl. oz.
236-227
reg. \$18
\$11.99

Timeless Cologne
soft floral
Cardamom,
jasmine and
patchouli.
1.7 fl. oz.
037-930
reg. \$18
\$11.99



Odyssey Cologne
soft floral
Tuberose,
ylang-ylang
and warm
oakmoss.
1.7 fl. oz.
168-697
reg. \$18
\$11.99



Candid Cologne
amber floral
Bergamot,
tuberose and
patchouli.
1.7 fl. oz.
038-295
reg. \$18
\$11.99



Sweet Honesty Cologne
soft floral
Lily of the
valley, rose and
cedarwood.
1.7 fl. oz.
037-595
reg. \$18
\$11.99



Topaze Cologne
soft floral
Jasmine, rose
and sheer musk.
1.7 fl. oz.
735-217
reg. \$18
\$11.99



Free O₂ Eau de Toilette
fresh green floral
White peach
tea, airy
honeysuckle
and musk.
1.7 fl. oz.
265-658
reg. \$18
\$11.99



Night Magic Cologne
woody floral
Neroli,
jasmine
and musk.
1.7 fl. oz.
168-682
reg. \$18
\$11.99



Ginza Stefany Wish You Were Here
fruity floral
Sweet hawthorn
berry, ripe pear and
sensuous patchouli.

Eau de Parfum
1.69 fl. oz.
405-149
reg. \$40
\$34

Hair & Body Mist
4 fl. oz.
623-826
reg. \$22
\$18

Avon Prima Noir Eau de Parfum
amber floral
Enticing violet,
opulent jasmine
and creamy
vanilla noir.
1.7 fl. oz.
829-835
reg. \$30
\$26.49



Avon Prima Eau de Parfum
amber floral
Delicate plum,
pink rose and
white patchouli.
1.7 fl. oz.
577-887
reg. \$30
\$26.49



Live Out Loud Eau de Parfum
fruity floral
A free-spirited
expression of sweet
wild strawberry,
sparkling mimosa
and comforting
fluffy vanilla. 1.7 fl. oz.
142-000
reg. \$40
\$26.49



Today Eau de Parfum
soft floral
Magnolia blossoms,
hibiscus petals
and silk musk.
1.7 fl. oz.
325-920
reg. \$30
\$26.49



LYRD Artisan Cannabis Oud Eau de Parfum
fresh citrus
 Sweet pomelo, rich agarwood, earthy cannabis leaves. Contains .01% of CBD. This eau de parfum does not contain THC.
 1.7 fl. oz.
 254-544
 reg. \$60
\$49



LYRD Oud Rose
woody floral
 Spicy saffron, romantic rose and velvety patchouli.

Eau de Parfum
 1.7 fl. oz.
 954-412
 reg. \$38
\$32

Travel Spray
 .3 fl. oz.
 448-496
 reg. \$21
\$17



LYRD Sparkling Neroli Eau de Parfum
fresh citrus
 Sparkling neroli, bergamot and warm musk.

1.7 fl. oz.
 572-521
 reg. \$36
\$29



LYRD Honeysuckle Blossom Eau de Parfum
soft floral
 Apple blossom, honeysuckle nectar and vanilla orchid.
 1.7 fl. oz.
 616-282
 reg. \$24
\$20



LYRD Peony Rosé Eau de Parfum
soft floral
 Peony petals, pink currant and sheer musk.
 1.7 fl. oz.
 616-210
 reg. \$24
\$20



let's go to the fair!

Limited-edition candles bring back the fondest scents of sunny days spent at the state fair with delicious sweets and deep-fried everything!



❖ **LYRD Candle**
 3-wick, 11 oz. candle gives 30 hours of burn time. 4 1/4" diam. x 3 1/8" H. Glass jar, paper dust cover, soy blend wax. Assembled in USA. reg. \$25
\$19.99 each

❖ **LYRD Strawberry Funnel Cake Candle**
 Deep-fried dough and powdered sugar dreams! Notes of strawberry syrup, funnel cake accord and vanilla bean. **403-700**

❖ **LYRD Saltwater Taffy Candle**
 America's favorite chewy, sticky boardwalk babies! Notes of sweet banana, red berries and sea salt. **385-809**

❖ **LYRD Piña Colada Slushie Candle**
 Refresh in a juicy and creamy sip of sunshine! Notes of Peruvian lime, coconut milk and golden pineapple. **385-320**

Never leave burning candles unattended. Keep away from children and pets.

BLACK SUEDE ULTIMATE

EFFORTLESSLY COOL

Black Suede Ultimate
woody fougère
A dynamic blend of lemon, rich lavender and tonka bean.

Eau de Toilette
3.4 fl. oz.
792-412 reg. \$27
\$22.99

Body Moisturizer
6.7 fl. oz. 003-894 reg. \$19
\$14.99

Body Wash
6.7 fl. oz. 003-875 reg. \$19
\$14.99

Black Suede
Eau de Toilette
fresh aromatic
Fusion of bergamot, soft leather and oak moss.
3.4 fl. oz.
908-703
reg. \$22
\$14.99



Black Suede
Hair & Body Wash
5 fl. oz.
366-318
reg. \$8
\$3.99



Black Suede
Aftershave
Conditioner
3.4 fl. oz.
364-353
reg. \$8
\$3.99



MESMERIZE
CAPTIVATE AT
A SINGLE GLANCE

Mesmerize Ultimate
Eau de Toilette
woody fougère
Black pepper, zesty pomelo and sensuous patchouli. 3.4 fl. oz.
897-030
reg. \$36
\$27.99

Mesmerize Cologne
fresh aromatic
Bergamot, spicy cardamom and amber.
3.4 fl. oz.
871-458
reg. \$25
\$18.99



Mesmerize Black
Eau de Toilette
woody fougère
Pepper, addictive nutmeg and tonka bean.
3.4 fl. oz.
305-667
reg. \$25
\$18.99



Mesmerize
Ultimate
Body Wash
6.7 fl. oz.
881-565
reg. \$19
\$14.99



Mesmerize Platinum
Ultimate Eau de Toilette
woody floral
Crisp pear, violet and warm amber.
3.4 fl. oz.
179-633
reg. \$36
\$27.99



Mesmerize
Platinum
Ultimate
Body
Moisturizer
6.7 fl. oz.
749-300
reg. \$19
\$14.99



MEN'S FRAGRANCES

Studio 1886 Gentleman
woody fougère
A dynamic blend of geranium, black pepper and cedarwood.

Eau de Toilette
1.7 fl. oz. 708-750
reg. \$50
\$39

Aftershave Lotion
6.7 fl. oz. 708-927
reg. \$16
\$12.99



Studio 1886 Legendary
Eau de Parfum
woody fougère
Vibrant lemon, crisp lavender, patchouli and salted amber.
1.7 fl. oz.
269-820
reg. \$50
\$39



Wild Country Cologne
fresh aromatic
Lavender, coriander seed and sandalwood.
3 fl. oz.
086-466
reg. \$22
\$14.99



Wild Country Hair & Body Wash
5 fl. oz. 364-080
reg. \$8
\$3.99



Wild Country Aftershave Splash
4 fl. oz.
366-432
reg. \$13
\$10.49



Perceive Cologne
fresh aromatic
Sparkling citrus, sage and cedarwood.
3.4 fl. oz.
194-550
reg. \$25
\$18.99



Alpha Eau de Toilette
fresh aromatic
Charismatic verbena, juniper berries and cedarwood.
3.4 fl. oz.
088-598
reg. \$25
\$18.99



Avon Exploration Eau de Toilette
fresh aromatic
Fresh orange, silver sage and vetiver.
2.5 fl. oz.
593-666
reg. \$25
\$18.99



FRAGRANCE SETS save on all your faves

SET INCLUDES:

Wild Country Cologne
fresh aromatic
Lavender, coriander seed and sandalwood. 3 fl. oz.

Avon Exploration Eau de Toilette
fresh aromatic
Fresh orange, silver sage and vetiver. 2.5 fl. oz.

2-PIECE SET
\$19.99
\$47 VALUE
650-484



SET INCLUDES:

Wild Country Cologne
3 fl. oz.

Perceive Cologne
fresh aromatic
Sparkling citrus, sage and cedarwood. 3.4 fl. oz.

2-PIECE SET
\$19.99
\$47 VALUE
650-541



SET INCLUDES:

Wild Country Cologne
3 fl. oz.

Alpha Eau de Toilette
fresh aromatic
Charismatic verbena, juniper berries and cedarwood. 3.4 fl. oz.

2-PIECE SET
\$19.99
\$47 VALUE
650-780



Avon Classics Hand Cream

Moisturizing formula with jojoba seed oil and vitamin E. Leaves skin lightly scented. Each, 2.5 fl. oz.

- Sweet Honesty 234-789
 - Night Magic 235-440
 - Timeless 234-740
- reg. \$6
\$3.99 each



Body Scrub & Wash

Gentle formula cleanses as it removes rough, dry skin. Skin is refreshed, smooth and beautifully scented. Each, 6.7 fl. oz.

- Haiku 143-208
 - Far Away 143-360
- reg. \$12
\$9.99 each



Body Lotion

Luxurious moisturizer leaves skin soft and scented. 6.7 fl. oz.

- Far Away 011-430
 - Rare Pearls 933-517
 - Haiku 447-820
- reg. \$10
\$6.99 each



Creamy softness

Perfumed Skin Softener

Moisturizing formula leaves skin soft and scented.

- Each, 5 fl. oz.
 - Haiku 813-973
 - Candid 103-926
 - Far Away 812-981
 - Night Magic 104-129
 - Odyssey 104-171
 - Sweet Honesty 104-463
 - Timeless 104-478
 - Imari 818-239
- reg. \$8
\$3.99 each



Gentology Herb & Aloe All-Over Wash

For face, hair and body. With aloe and natural herbal extracts.

- 10.1 fl. oz.
 - 533-347
- reg. \$16
\$13.65



Bar Soap

Moisturizes as it gently cleanses, leaving skin lightly fragranced.

- Each, 3.17 oz. net wt.
 - Black Suede 495-565
 - Wild Country 495-570
- reg. \$6
\$3.99 each



Deodorant Stick

All-day freshness in your favorite classic Avon scent! Nourishing formula glides on smoothly without leaving any residue. Lasting odor protection.

- Each, 1 oz. net wt.
 - Black Suede 705-602
 - Rare Pearls 727-891
 - Haiku 727-906
- reg. \$12
\$9.99 each

JUICY JEWEL TONES

necklace and earrings set



set of 3

NEW

Tropical Watermelon Collection

Multicolor beads in green, white, fuchsia, pink and red set in goldtone.

Earrings

Hoops, approx. 1 1/2" diam. Pierced.
264-279
 reg. \$12.99
\$9.99

Necklace and Earrings Gift Set

Necklace: longest layer, 26" L; shortest layer, 16 1/2" L with 3 1/2" extender. Pierced drops, approx. 1" L. **264-063**
 reg. \$29.99
\$22.99 the set

Stretch Bracelet Set

Set of three. One size fits most.
264-446
 reg. \$16.99
\$12.99 the set

SANTA FE STYLE

The look of turquoise turns on the Western charm.

necklace and earrings set



cuff bracelet stretches to fit most

NEW

Western Turquoise Collection

Reconstituted turquoise stones set in antiqued silvertone.

Necklace and Earrings Gift Set

Necklace, 16 1/2" L with 3 1/2" extender. Pierced drops, 1/2" L.
838-893
 reg. \$32.99
\$24.99 the set

Stretch Bracelet

Cuff stretches to fit most.
839-809
 reg. \$19.99
\$14.99

Hoop Earrings

1/4" diam. Pierced.
839-096
 reg. \$16.99
\$12.99

BEACHY BAUBLES

Genuine sea shells and coral colors.

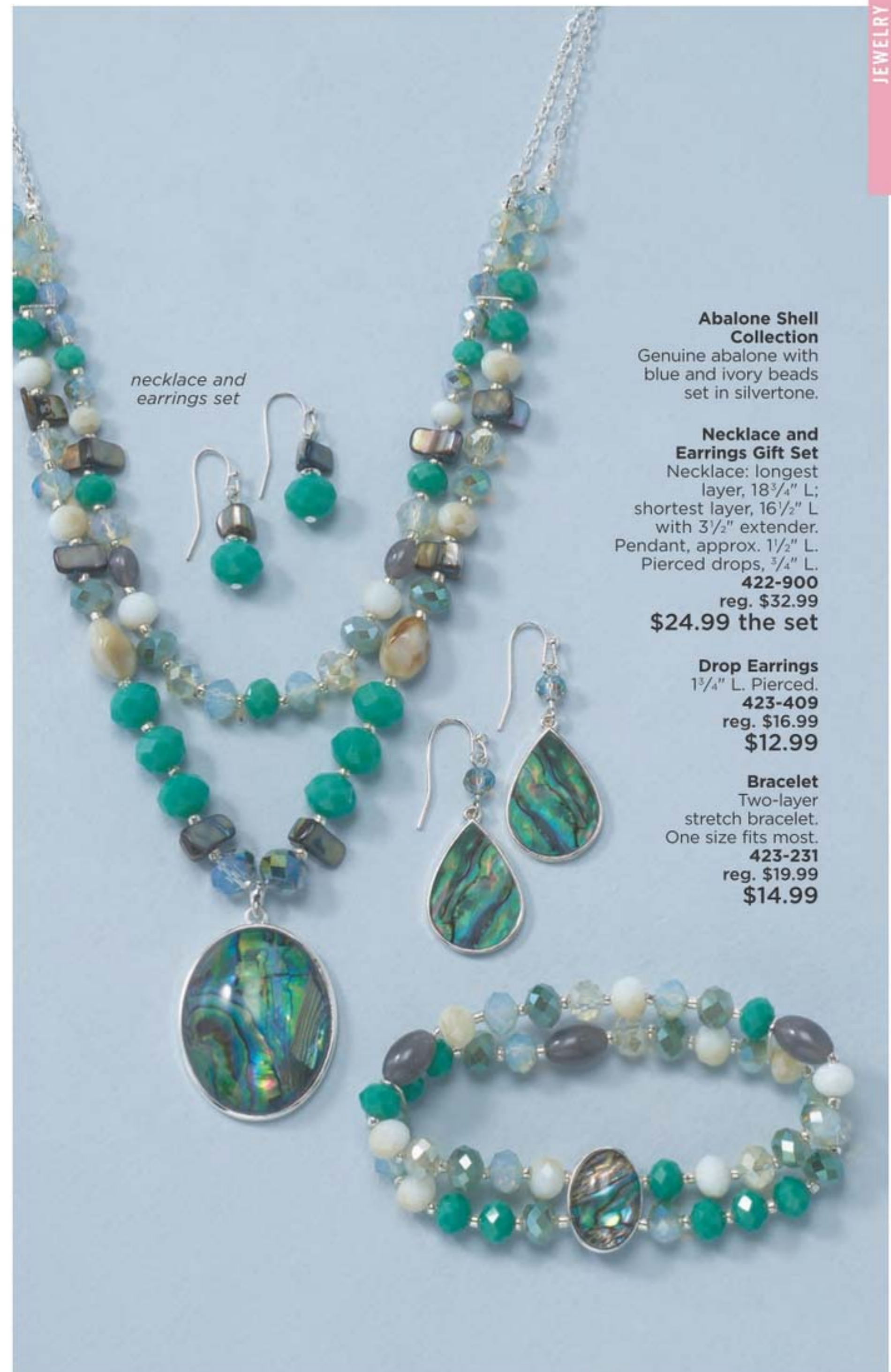


Beachy Coral Collection
Goldtone with coral-color beads and genuine shell accents.

Double-Layer Necklace
Longest layer, 36" L; shortest layer, 26" with 3 1/2" extender.
089-594
reg. \$29.99
\$22.99

Hoop Earrings
Approx. 2 1/2" L. Pierced. **089-780**
reg. \$12.99
\$9.99

Bracelet
Three-layer bracelet. One size fits most.
089-609
reg. \$19.99
\$14.99



necklace and earrings set

Abalone Shell Collection
Genuine abalone with blue and ivory beads set in silvertone.

Necklace and Earrings Gift Set
Necklace: longest layer, 18 3/4" L; shortest layer, 16 1/2" L with 3 1/2" extender. Pendant, approx. 1 1/2" L. Pierced drops, 3/4" L.
422-900
reg. \$32.99
\$24.99 the set

Drop Earrings
1 3/4" L. Pierced.
423-409
reg. \$16.99
\$12.99

Bracelet
Two-layer stretch bracelet. One size fits most.
423-231
reg. \$19.99
\$14.99

EXTRA TEXTURE

Metals with dimension:
a jewelry wardrobe
must.

necklace and
earrings set



NEW

**Textured Metal
Collection**
Antiqued silvertone
metal beads and
discs.

**Necklace and
Earrings Set**
Necklace, 26" L
with 3 1/2" extender.
Pierced drops, 1" L.
264-628
reg. \$22.99
\$16.99 the set

Drop Earrings
1 1/2" L. Pierced.
265-165
reg. \$13.99
\$10.99

Stretch Bracelet Set
Set of two.
One size fits most.
264-666
reg. \$16.99
\$12.99 the set

set of 2



Sea Life Collection
Antiqued silvertone.

Pendant Necklace
16 1/2" L with 3 1/2"
extender. Pendant,
1 1/4" L. **090-207**
reg. \$16.99
\$12.99

Drop Earrings
1 1/4" L. Pierced.
090-670
reg. \$12.99
\$9.99

Bracelet
Flexible; one
size fits most.
090-518
reg. \$16.99
\$12.99

COLOR CODED

Show off your personality with your favorite colors and symbols.



Purple/
Sivertone
840-058

Green/
Goldtone
840-540

Blue/
Sivertone
842-820

NEW
Vibrant Enamel Collection
Colored enamel and stones.

Necklace
16 1/2" L with 3 1/2" extender.
Pendant, approx. 3/4" W.
reg. \$16.99
\$12.99 each

Earrings Set
Nine-pair set of pierced studs and mini hoops.
Largest hoop, 1/2" L.
844-660
reg. \$22.99
\$16.99 the set



necklace and earrings sets

NEW
Sentimental Motif Collection
Metal tones with genuine and/or stone-like accents.

Necklace and Earrings Set
Necklace, 16 1/2" L with 3 1/2" extender.
Pendant, 1" L. Pierced drops, approx. 1/2" L.
reg. \$19.99
\$14.99 each set

Heart
(goldtone/genuine mother-of-pearl)
090-867

Cross
(silvertone/genuine dyed howlite)
090-848

Leaf
(rose goldtone/genuine abalone accent)
090-852

anklet sets

Anklet Set
Set of two. 9 1/2" L with 1" extender.
reg. \$13.99
\$10.99 each set



A. Goldtone (pearlesque)
090-871
B. Silvertone (look of turquoise)
090-943
C. Rose Goldtone (genuine abalone accent)
090-886

LUXE IN THE AFTERNOON

No need to wait for evening to sparkle like a diamond!



3-piece set



NEW

A Royal Affair Collection

Clear glass stones set in silvertone.

3-Piece Gift Set:

Necklace, 16½" L with 3½" extender. Pierced drops, 1½" L. Ring, approx. ¾" W.

Order by ring size:

6 845-050

8 845-064

10 845-079

reg. \$22.99

\$16.99

the set

Pull-Cord Bracelet

One size fits most.

845-083

reg. \$16.99

\$12.99



necklace and earrings set

Aqua and Pearly Collection

Goldtone with aqua and pearly accents.

Necklace and Earrings Set

With glass stones. Necklace, 16½" L with 3½" extender. Pierced drops, approx. 1½" L.

091-017

reg. \$22.99

\$16.99 the set

Cuff Bracelet

With beads. One size fits most.

091-112

reg. \$19.99

\$14.99

PERFECTLY PASTEL

Subtle spring shades shimmer and sparkle with elegance.



Golden Pastel Collection
Pastel glass stones set in goldtone.

Drop Earrings
With CZs.
Pierced, 2" L.
263-048 reg. \$12.99
\$9.99

Y Necklace
16 1/2" L with
3 1/2" extender.
263-029 reg. \$19.99
\$14.99

Bracelet
7 1/4" L.
Clasp closure.
263-913 reg. \$16.99
\$12.99



True Blue Princess 3-Piece Set
Sapphire-color glass stones with accent CZs set in silvertone.
Necklace, 16 1/2" L with 3 1/2" extender.
Pierced drops, 1" L.

Order by ring size:
6 263-932
8 264-044
10 265-150
reg. \$19.99
\$14.99
the set

3-piece necklace, earrings and ring set



Pearlesque Filigree Collection
Goldtone with pearlesque beads and clear stone accents.

Necklace
16 1/2" L with
3 1/2" extender.
Pendant, 1 1/2" L.
380-549
reg. \$16.99
\$12.99

Earrings
Approx. 1 1/4" L.
Pierced.
380-568
reg. \$12.99
\$9.99

STERLING SILVER

elegance

Something new...
something blue.



NEW

Sterling Silver Sparkling Spinel Collection

Blue spinel stone with CZ accent set in sterling silver.

Earrings

1/2" L drops. Stone, 1.75-carat total weight equivalent. Pierced.

845-231
reg. \$64.99
\$49.99

Necklace

17" L with 1" extender. Pendant, 1/2" L. Stone, 2-carat weight equivalent. 845-098
reg. \$67.99

\$52.99

Ring

Stone, 2-carat weight equivalent.

Sizes:

5 845-102 8 845-160
6 845-121 9 845-174
7 845-140 10 845-189

reg. \$67.99
\$52.99



STERLING SILVER

romance

The love knot, an enduring symbol of commitment.



Sterling Silver Collection
Clear CZ stones set in sterling silver.

Twist Hoops

1/2" diam. Pierced.
274-060
reg. \$69.99
\$54.99

Love Knot Necklace

17" L with 1" extender. Pendant, 1/2" L.
268-370
reg. \$64.99
\$49.99

Twist Band Engagement Ring

.65-carat weight equivalent.
Sizes:
5 274-902 8 283-540
6 277-863 9 285-409
7 278-047 10 288-651
reg. \$64.99
\$49.99

Twist Band Ring

Sizes:
5 302-194 8 305-045
6 304-622 9 306-238
7 308-026 10 306-329
reg. \$53.99
\$42.99

Blushing Mother-of-Pearl Collection
Genuine sterling silver with CZ stones.

Necklace

17" L with 1" extender. Pendant, approx. 3/4" W.
710-665 reg. \$74.99
\$59.99

Earrings

3/4" L. Pierced.
711-968 reg. \$74.99
\$59.99

Ring

3/4" L.
Sizes:
5 711-972 8 712-448
6 712-084 9 713-387
7 712-118 10 713-425
reg. \$74.99
\$59.99



style trip

Get ready for your summer escape. Free your fashion spirit with boho prints and flowy silhouettes.

❖ **Printed Handkerchief Dress**
Sleeveless printed dress with V-neck and handkerchief hem. Rayon/spandex. Center back length: 40½" (shortest point), 48½" (longest point) on medium; 42" (shortest point), 50" longest point on 1X. Machine wash and dry. Imported.
XS(0-2) **692-486**
S(4-6) **692-558**
M(8-10) **694-641**
L(12-14) **696-242**
XL(16) **699-438**
1X(18W-20W) **699-442**
2X(22W-24W) **699-461**
3X(26W-28W) **700-691**
reg. \$62.99
\$48.99

Gold-Studded Sandal
sold on page 110.



Sunglasses not available.



A. ❖ Crochet-Trim Cutout Top
Coral top with round neckline and crochet trim on shoulder and sleeves. Body: polyester/spandex; crochet trim: 100% polyester. Center back length: 25½" on medium; 27½" on 1X. Machine wash, dry flat. Imported.
XS(0-2) **665-540** XL(16) **665-612**
S(4-6) **665-555** 1X(18W-20W) **665-699**
M(8-10) **665-560** 2X(22W-24W) **666-240**
L(12-14) **665-593** 3X(26W-28W) **666-418**
reg. \$42.99
\$32.99



B. ❖ Bandana Printed Top
Purple top with paisley bandana and floral prints, split-neck detail, shirring at waist, short sleeves with elastic cuff and slight high-low hem. 100% rayon. Center length: 26" (front), 28" (back) on medium; 28" (front), 30½" (back) on 1X. Machine wash, dry flat. Imported.
XS(0-2) **667-213** XL(16) **678-289**
S(4-6) **667-486** 1X(18W-20W) **691-111**
M(8-10) **667-687** 2X(22W-24W) **691-126**
L(12-14) **667-820** 3X(26W-28W) **692-471**
reg. \$48.99
\$38.99

Sunglasses not available.

the carefree summer maxi



2-Pack



get on the bright side!

A. ♦ 2-Pack Tulip-Sleeve Tops
 Round elastic-neck tops with light shirring and short tulip sleeves in blue topaz (solid) and red print. Rayon/spandex. Center back length: 24" on medium; 25½" on 1X. Machine wash, dry flat. Imported.
 XS(0-2) **700-710** XL(16) **700-759**
 S(4-6) **700-725** 1X(18W-20W) **700-763**
 M(8-10) **700-730** 2X(22W-24W) **700-778**
 L(12-14) **700-744** 3X(26W-28W) **700-782**
 reg. \$44.99
\$34.99 pack of 2



B. ♦ Cold-Shoulder Printed Dress
 Blue-topaz-print swing dress with round neck and cutout shoulders. Viscose/spandex. Center back length: 35" on medium; 36" on 1X. Machine wash, dry flat. Imported.
 XS(0-2) **704-682** XL(16) **704-902**
 S(4-6) **704-701** 1X(18W-20W) **704-989**
 M(8-10) **704-754** 2X(22W-24W) **704-993**
 L(12-14) **704-879** 3X(26W-28W) **705-014**
 reg. \$49.99
\$39.99



♦ Smocked Maxi Dress
 Red maxi dress with round elastic neck, smocked bodice, raglan short sleeves, ruffle detail on skirt and side seam pockets. Body: 100% rayon; lining: 100% polyester. Center back length: 49" on medium and 1X. Hand wash, dry flat. Imported.
 XS(0-2) **701-019**
 S(4-6) **701-281**
 M(8-10) **701-296**
 L(12-14) **701-870**
 XL(16) **701-884**
 1X(18W-20W) **701-899**
 2X(22W-24W) **701-903**
 3X(26W-28W) **701-918**
 reg. \$53.99
\$42.99

Gold-Studded Sandal
 sold on page 110.

Sunglasses not available.

APPAREL SIZE CHART

SIZE	BUST	WAIST	HIP
XS 0/2	30.5"-32"	23.5"-25"	32.5"-34"
S 4/6	33.5"-35"	26.5"-28"	35.5"-37"
M 8/10	36.5"-38"	29.5"-31"	38.5"-40"
L 12/14	39.5"-41"	32.5"-34"	41.5"-43"
XL 16	43"-44"	35.5"-36.5"	44.5"-45.5"
1X 18W/20W	46.5"-48.5"	39"-41"	48"-50"
2X 22W/24W	50.5"-52.5"	43"-45"	52"-54"
3X 26W/28W	54.5"-56.5"	47"-49"	56"-58"

summer vibes



❖ **Eyelet Puff-Sleeve Top**
White top with eyelet-puff short sleeves with elastic cuff. Body: cotton/spandex; sleeves: polyester/cotton. Center back length: 23" on medium; 24½" on 1X. Machine wash, dry flat. Imported.

XS(0-2) 702-000
S(4-6) 702-015
M(8-10) 702-020
L(12-14) 702-034
XL(16) 702-049
1X(18W-20W) 702-053
2X(22W-24W) 702-068
3X(26W-28W) 702-072
reg. \$44.99
\$34.99

❖ **Stripe Pull-On Pants**
Striped pants with elastic waistband and side seam pockets. Polyester/spandex. Inseam: 28½" on all sizes. Machine wash, dry flat. Imported.

XS(0-2) 703-064
S(4-6) 703-834
M(8-10) 703-872
L(12-14) 703-906
XL(16) 704-500
1X(18W-20W) 704-515
2X(22W-24W) 704-572
3X(26W-28W) 704-678
reg. \$42.99
\$32.99

Double-Strap Sandal
sold on page 110.



keep it cool

A. ❖ Sleeveless Smocked Top
Blue Swiss-dot top with smocking on front and back yoke with ruffle detail on neck and sleeves. Three-button closure on back. 100% polyester. Center back length: 24" on medium; 26" on 1X. Machine wash, line dry. Imported.

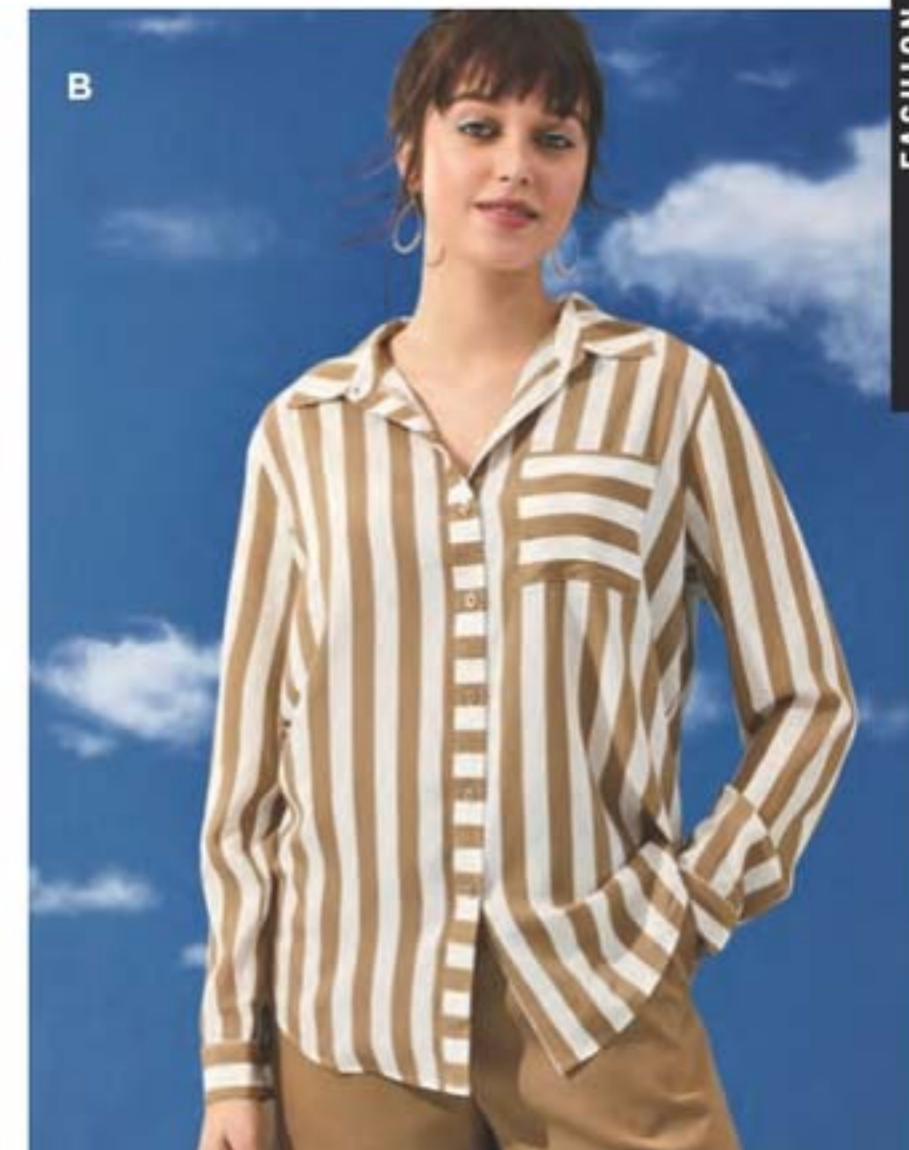
XS(0-2) 701-922 XL(16) 701-960
S(4-6) 701-937 1X(18W-20W) 701-975
M(8-10) 701-941 2X(22W-24W) 701-980
L(12-14) 701-956 3X(26W-28W) 701-994
reg. \$39.99
\$29.99

B. ❖ Stripe Button-Front Shirt
Striped button-down shirt with chest pocket, long sleeves with button cuff and shirttail hem. Rayon/polyester. Center back length: 28" on medium; 29" on 1X. Machine wash, dry flat. Imported.

XS(0-2) 700-816 XL(16) 700-869
S(4-6) 700-835 1X(18W-20W) 700-873
M(8-10) 700-840 2X(22W-24W) 700-911
L(12-14) 700-854 3X(26W-28W) 700-998
reg. \$46.99
\$36.99

C. ❖ Open-Knit Long Cardigan
White open-front cardigan with patch pockets and long sleeves. Nylon/spandex. Center back length: 40" on medium; 41" on 1X. Machine wash, dry flat. Imported.

XS(0-2) 702-087 XL(16) 702-288
S(4-6) 702-091 1X(18W-20W) 702-766
M(8-10) 702-106 2X(22W-24W) 702-790
L(12-14) 702-110 3X(26W-28W) 703-011
reg. \$53.99
\$42.99



FASHION

tee set



4-Pack



❖ 4-Pack Summer Tees

V-neck short-sleeve tees with shirttail hem in white, purple, blue topaz (solid colors) and blue print. Cotton/polyester. Center back length: 26" on medium; 28" on 1X. Machine wash, dry flat. Imported.

XS(0-2) 705-200	S(4-6) 705-215	M(8-10) 705-440	L(12-14) 705-469
XL(16) 706-340	1X(18W-20W) 706-355	2X(22W-24W) 706-360	3X(26W-28W) 706-393

reg. \$49.99
\$39.99 pack of 4



A. ❖ Sleeveless Grommet Top

Celery-green top with V-neck with grommet-strap detail. Rayon/spandex. Center back length: 27" on medium; 28" on 1X. Machine wash, dry flat. Imported.

XS(0-2) 705-033	XL(16) 705-110
S(4-6) 705-048	1X(18W-20W) 705-124
M(8-10) 705-052	2X(22W-24W) 705-181
L(12-14) 705-086	3X(26W-28W) 705-196

reg. \$42.99
\$32.99

B. ❖ 2-Piece Crinkled Pants Set

Includes green V-neck top with pleat detail, open collar, two patch pockets with button detail, short sleeves with folded cuff and shirttail hem; and matching pants with elastic waistband and side seam pockets. 100% cotton. Center back length for top: 26" on medium; 28" on 1X. Inseam for bottoms: 27" for all sizes. Hand wash, dry flat. Imported.

XS(0-2) 706-450	XL(16) 706-518
S(4-6) 706-465	1X(18W-20W) 706-522
M(8-10) 706-470	2X(22W-24W) 706-537
L(12-14) 706-503	3X(26W-28W) 706-541

reg. \$64.99
\$49.99 2-piece set



2-Piece Set

FASHION

Double-Buckle Sandal sold on page 110.



sunshine sandals

A. ♦ Gold-Studded Sandal

Tan with gold-stud detail on upper. Man-made materials. Half sizes, order size down. Imported.

6M 722-149 8M 722-172 10M 725-296
7M 722-168 9M 725-281 11M 725-300

reg. \$29.99
\$22.99

B. ♦ Double-Buckle Sandal

Two-tone sandal with adjustable double buckles. Man-made materials. Half sizes, order size down. Imported.

6M 706-556 8M 706-580 10M 706-651
7M 706-560 9M 706-613 11M 706-666

reg. \$32.99
\$24.99

C. ♦ Rhinestone T-strap Sandal

Blue with rhinestone detail on upper straps. Adjustable ankle strap. Man-made materials. Half sizes, order size down. Imported.

6M 725-315 8M 725-478 10M 728-371
7M 725-320 9M 728-367 11M 729-454

reg. \$34.99
\$26.99



♦ **2-Piece Rib-Knit Shorts Set**
Printed set includes top with round neck, side slits and short sleeves; and matching shorts with elastic waistband. Polyester/spandex. Center back length for top: 25½" on medium; 28" on 1X. Inseam for shorts: 7" on medium; 8" on 1X. Machine wash and dry. Imported.

XS(0-2) 731-594
S(4-6) 731-613
M(8-10) 732-548
L(12-14) 732-552
XL(16) 732-567
1X(18W-20W) 732-586
2X(22W-24W) 732-624
3X(26W-28W) 732-643
reg. \$48.99
\$38.99
2-piece set

strike a match

♦ Mesh Slip-On Sneaker

Elastic gore on upper. Man-made materials. Half sizes, order size up. Imported. reg. \$46.99

\$36.99 each pair

Light Grey

6M 708-195 9M 718-996
7M 713-736 10M 719-040
8M 718-981 11M 719-720

Red

6M 719-734 9M 722-115
7M 722-010 10M 722-120
8M 722-024 11M 722-134



BALI® shape-smoothing styles to contour your curves



Shown: Animal Print.

- WHITE
- SAND-SHELL
- NUDE
- CINNAMON
- ANIMAL PRINT
- COCOA BROWN
- BLACK

❖ **Bali® Comfort Revolution® EasyLite™ Wirefree Bra (3491)**
Wirefree pullover bra with side flex panels. SmoothTec® design for an invisible look under clothing. Full-coverage back smoothing and support. Cool Comfort™ moisture-wicking fabric. Removable cups. Nylon/spandex. Hand wash, line dry. Imported. Sizes: S, M, L, XL, 2XL, 3XL (all colors). **reg. \$48**
\$38.99



Shown: Almond.

- WHITE
- SAND-SHELL
- ALMOND
- BLACK

❖ **Bali® Comfort Revolution® Soft Touch Perfect T-shirt Wirefree Bra (DF3460)**
Adjustable and convertible straps. Moisture-wicking fabric keeps you cool. Hook-and-eye closure. Nylon/spandex. Hand wash, line dry. Imported. Sizes: S, M, L, XL, 2XL, 3XL (all colors). **reg. \$48**
\$38.99

PLAYTEX® comfort and smoothing support



Shown: Evening Blush.

- WHITE
- NUDE
- EVENING BLUSH
- BLACK

❖ **Playtex® Perfectly Smooth® Wirefree Bra (US4707)**
Back closure. Lightly lined. Nylon/spandex, polyester lining. Hand wash, line dry. Imported. **White, Nude, Black: 36-42B; 36-44C,D,DD; 36-42DDD.**
Evening Blush: 36-44C,D,DD.
reg. \$46
\$37.99



Shown: Taupe.

- WHITE
- PINK PIRouETTE
- TAUPE
- EVENING BLUSH
- BLACK

❖ **Playtex® Front Close® No Poke Dreamwire™ Bra (US4423)**
No pinching. No poking. Just smooth support with wicking Cool Comfort® fabric. Front closure. Nylon/spandex/polyester. Hand wash, line dry. Imported. Sizes: 38-48C,D,DD,DDD (all colors). **reg. \$46**
\$36.99



Shown: Taupe.

- WHITE
- SAND-SHELL
- TAUPE
- BLACK

❖ **Bali® Passion For Comfort® Breathable Minimizer Underwire Bra (DF3490)**
Minimizes by 1/2". Full coverage. No-slip, adjustable and convertible straps can be worn traditional or crisscross. Back closure. Nylon/polyester/spandex. Hand wash, line dry. Imported. Sizes: 34-42C-DDD (all colors). **reg. \$48**
\$38.99



Shown: Soft Taupe.

- WHITE
- SOFT TAUPE
- SAND-SHELL
- CINNAMON
- COCOA BROWN
- BLACK

❖ **Bali® Passion for Comfort® Minimizer Underwire Bra (DF3385)**
Minimizes by 1/2". Back closure. Nylon/polyester/spandex. Hand wash, line dry. Imported. Sizes: 32-44C,D,DD,DDD; 36-44G (all colors). **reg. \$48**
\$38.99



Shown: Almond.

- WHITE
- PINK PIRouETTE
- ALMOND
- BLACK

❖ **Playtex® Ultra Soft Comfortflex Fit® Convertible Wirefree Bra (US4830)**
Wire-free comfort. Lightly lined. Adjustable straps. Lightweight and flexible. Back closure. Nylon/spandex. Hand wash, line dry. Imported. Sizes: S-3X (all colors). **reg. \$46**
\$36.99



Shown: Nude Stripe.

- WHITE STRIPE
- NUDE STRIPE
- BLACK STRIPE

❖ **Playtex® Secrets® Perfectly Smooth® Underwire Bra (US4747)**
Smooths side and back bulges. 4-Way TruSUPPORT® design. Back closure. Lightly lined. Nylon/spandex/polyester/cotton. Hand wash, line dry. Imported. Sizes: 36-42B; 36-44C,D,DD; 36-42DDD (all colors). **reg. \$46**
\$37.99

Playtex® is a registered trademark used under license.

clean up crew

SAFELY REMOVE
TOUGH STAINS



❖ **Homestar Cook Top & Stainless Steel Cleaning Wipes**
Plant-based surfactants to lift and remove leftover residue and spills from glass cooktops and stainless steel. 50 wipes, each, 10½" x 9½".
149-995
reg. \$9.99
\$7.99

❖ **Homestar Rangehood & Kitchen Degreaser**
Super-strength formula with a double-solvent solution blend for hard-to-remove grease. External oven use only.
16.2 fl. oz.
918-150
reg. \$13.99
\$10.99

❖ **Homestar Cook Top Cleaner & Polish**
Cleans, polishes and protects smooth cooktop ranges for a scratch-free shine. Plant-based formula. Fresh green herbal scent. 7.7 fl. oz.
593-059
reg. \$12.99
\$9.99

HOMESTAR



❖ **Homestar Odor Eliminator for Fridge**
No-spill solid gel formula neutralizes fridge odors. Lasts up to 3 months. 14.8 oz. net wt.
793-165
reg. \$7.99
\$5.99

❖ **Homestar Multi Purpose Cleaner**
Bleach-free. With citric acid, orange oil and baking soda. Natural citrus scent. 16.9 fl. oz.
307-507
reg. \$9.99
\$7.99



❖ **Refill**
Spray nozzle not included. 30.4 fl. oz.
700-964
reg. \$11.99
\$8.99

❖ **Homestar Floor Cleaner**
Nozzle provides targeted application to apply directly to floor. Dries quickly for a streak-free shine. Great for laminate, sealed hardwood and sealed stone. Fresh lavender scent. 25.3 fl. oz.
149-980
reg. \$9.99
\$7.99



❖ **Homestar Bathroom Cleaner**
Just spray, let sit and wipe away! Fights tough soap scum, limescale, calcium and grime. Fresh green apple scent. 25.4 fl. oz.
092-635
reg. \$11.99
\$8.99



❖ **Homestar Foaming Toilet Bowl Cleaner**
Fights toilet rings and stains. Includes five pouches. 10.6 oz. total net wt.
090-298
reg. \$12.99
\$9.99



fresh zone

❖ **Fresh Fiji Sheet Detergent**
Laundry detergent in a single sheet! Seven-enzyme stain-removing blend. 30 easy-dissolving detergent sheets. Each sheet, 9" x 8".
Lavender
406-092
Fresh
184-203
reg. \$19.99
\$14.99 each



❖ **Fresh Fiji Hygienic Power Fabric Softener**
3x concentrated. Softens, freshens and protects clothes. Long-lasting rosewater and jasmine scent. Made with plant-based surfactants. Microplastic-free. Safe for skin and environment. 50 loads. 33.8 fl. oz.
792-355
reg. \$7.99
\$5.99



❖ **Fresh Fiji Hygienic Power Laundry Detergent**
With Hygienic Power formula to remove dirt you can't see, a stain-fighting solution to brighten and whiten and baking soda to help prevent odors. 25 loads. 33.8 fl. oz.
700-137
reg. \$8.99
\$6.99



FRESH FIJI

❖ **Fresh Fiji Fabric Refresher with Wrinkle Release**
Freshens fabrics and smooths wrinkles. Clean laundry scent. 16.9 fl. oz.
322-988
reg. \$11.99
\$8.99



❖ **Fresh Fiji Gel Beads Deodorizer**
Neutralizes odors for up to 70 days. Plastic. 5.29 oz. net wt.
Fresh Cotton
930-188
Calming Lavender
918-313
reg. \$11.99
\$8.99 each



❖ **Fresh Fiji Shoe Deodorizer**
Eliminates tough odors on contact with the power of baking soda and persimmon. Great for all kinds of shoes, from leather to cotton. 10.1 fl. oz.
322-256
reg. \$9.99
\$7.99



❖ **Fresh Fiji Car Air Freshener**
Clips onto car vents and allows you to control the fragrance intensity. Freshens for up to 50 days. .17 fl. oz. 2 1/4" diam. x 1 1/4" D with 2" L clip. Plastic. Imported.
Orange Blossom
721-472
White Cotton
721-597
reg. \$7.99
\$5.99 each



NO STRONG OR HARSH, SYNTHETIC, CHEMICAL FUMES.

❖ **Fresh Fiji Hinoki Room Spray**
A fine mist to freshen and deodorize every room with the light forest scent of hinoki wood. With natural essential oils. 13.5 fl. oz.
508-309
reg. \$11.99
\$8.99

❖ **Fresh Fiji Lavender Pillow Spray**
A fine mist for pillowcases, linens and bedding with the calming scent of lavender to help promote relaxation of body and mind. With natural essential oils. 13.5 fl. oz.
508-859
reg. \$11.99
\$8.99



your new squeeze

❖ **Cucina Essentials Dish Soap**
Concentrated mild gel leaves surfaces spotlessly clean. Free of chemical preservatives. Naturally derived formula with stain-removing citric acid. 16.6 fl. oz.

Lemon Verbena 918-165
Red Apple 918-170
reg. \$8.99
\$6.99 each



❖ **Cucina Essentials Glass Dish Soap Bottle**
Refillable dispenser includes pump. Holds 16 fl. oz. 3" diam. x 8 3/4" H. Glass, metal. Imported.
003-727
reg. \$12.99
\$9.99



❖ **Cucina Essentials Spray-On Dish Soap**
99% biodegradable, eco-friendly plant-based formula cuts grease on contact. Dermatologically-tested. Safe for skin. 16.9 fl. oz.
Fresh Citrus 545-992
Red Apple 545-973
reg. \$9.99
\$7.99 each



❖ **Sirius Groom Pet Detangling Mist**

No-rinse detangling mist keeps dog's fur tangle- and knot-free. Formulated with soothing and hydrating oat kernel extract and pro-vitamin B5. Use on wet or dry fur. Soft vanilla scent. Gentle and effective for all breeds. 5.1 fl. oz. **700-926**
reg. \$12.99
\$9.99

❖ **Sirius Groom Pet Grooming Mist**

Softens, soothes and hydrates your pet's skin and coat for instant freshness. Perfect for in-between washes. Moisturizing formula with centella asiatica, rosemary, oatmeal and pro-vitamin B5. Long-lasting baby powder scent. Gentle and effective for all breeds. 5.1 fl. oz. **758-794**
reg. \$12.99
\$9.99

❖ **Sirius Groom Pet Odor Eliminator for Upholstery & Fabrics**

Nature-derived rice and barley to absorb and neutralize odors. Light baby powder scent. For fabric and carpet use only. Do not spray on pets. 13.5 fl. oz. **247-565**
reg. \$12.99
\$9.99

NOT FOR USE ON PETS



❖ **SIRIUS GROOM SET INCLUDES:**

Sirius Groom Shampoo for Dogs in Baby Powder
16.2 fl. oz.

Sirius Groom Conditioner for Dogs in Baby Powder
16.2 fl. oz.

Sirius Groom Pet Detangling Mist
5.1 fl. oz.

3-PIECE SET \$19.99
OVER \$42 VALUE
850-897



❖ **Sirius Groom Shampoo for Dogs**
Anti-inflammatory oatmeal protects and soothes skin. pH-balanced formula. Nature-derived ingredients. 16.2 fl. oz.
Baby Powder 247-493
Lovely Berry 247-436
reg. \$14.99
\$11.99 each



❖ **Sirius Groom Conditioner for Dogs**
Rinse-off conditioner leaves coat soft and shiny. With aloe vera, vitamin E and oatmeal extract. Free from sulfates, colorants and silicones. Cruelty-free. 16.2 fl. oz.
Baby Powder 545-954
Lovely Berry 545-940
reg. \$14.99
\$11.99 each



Botanical Essence Bath Oil
With nourishing botanical extracts. Uplifting herbal scent. 16.2 fl. oz. **027-253** reg. \$31 **\$24.99**

Original Bath Oil
Hydrates during or after bath or shower. 16.9 fl. oz. **941-105** reg. \$24 **\$15.99**



Original Body Lotion
48 hours of moisture. 11.8 fl. oz. **935-338** reg. \$11 **\$7.69**



Original Gelled Body Oil
Dries to a silky finish. 6.76 fl. oz. **930-575** reg. \$13 **\$8.69**



Original Shower Gel
Gently cleanses and hydrates. 5 fl. oz. **933-005** reg. \$8 **\$5.19**



Original Beauty Bar Soap
Skin-nourishing bar soap. Creamy lather. Suitable for daily use on face, body and hands. 3.17 oz. net wt. **543-110** reg. \$4.50 **\$3.49**



Original Replenishing Hand Cream
24+ hours of moisturization. 3.4 fl. oz. **941-268** reg. \$5 **\$2.69**



Bonus-Size Original Body Lotion
33.8 fl. oz. **941-545** reg. \$20 **\$13.69**



Bonus-Size Original Shower Gel
Gently cleanses and hydrates. 33.8 fl. oz. **170-731** reg. \$15 **\$12.99**



Bonus-Size Original Bath Oil
Keeps skin hydrated after bath or shower. 25 fl. oz. **941-253** reg. \$30 **\$20.69**





**Bonus-Size
Soft &
Sensual
Bath Oil**
25 fl. oz.
941-110
reg. \$30
\$20.69



**Soft & Sensual
Bath Oil**
16.9 fl. oz.
504-614
reg. \$24
\$15.99



**Bonus-Size
Soft & Sensual
Shower Gel**
33.8 fl. oz.
171-848
reg. \$15
\$12.99

**Soft & Sensual
Body Lotion**
11.8 fl. oz.
934-312
reg. \$11
\$7.69

**Soft & Sensual
Replenishing
Hand Cream**
3.4 fl. oz.
867-315
reg. \$5
\$2.69

**Bonus-Size
Soft & Sensual
Body Lotion**
33.8 fl. oz.
943-806
reg. \$20
\$13.69



**Soft &
Sensual
Gelled
Body Oil**
6.76 fl. oz.
933-297
reg. \$13
\$8.69



**Soft & Sensual
Shower Gel**
5 fl. oz.
934-240
reg. \$8
\$5.19



**Soft & Sensual
Beauty Bar Soap**
3.17 oz. net wt. 543-215
reg. \$4.50
\$3.49



**Soft & Sensual
Antiperspirant
Deodorant
Roll-On**
2.6 fl. oz.
714-861
reg. \$3.60
\$2.69





Comforting Shea Bath Oil
16.9 fl. oz.
225-405
reg. \$24
\$15.99



Radiant Moisture Replenishing Hand Cream
3.4 fl. oz.
941-272
reg. \$5
\$2.69



Bonus-Size Radiant Moisture Shower Gel
33.8 fl. oz.
171-867
reg. \$15
\$12.99



Bonus-Size Radiant Moisture Body Lotion
33.8 fl. oz.
942-317
reg. \$20
\$13.69



Supreme Nourishment Enriching Coconut Oil Collection
The lasting nourishment of coconut oil.

Body Soufflé
6.7 fl. oz. 479-346
reg. \$16
\$10.49

Lip Balm
Coconut flavor.
.14 oz. net wt.
958-370 reg. \$2
\$1.39

Oil Wash
11.8 fl. oz.
933-703
reg. \$15
\$6.99



LET'S
CLEAR
SOME
THINGS
UP



developed for
all skin types with
gently exfoliating
salicylic acid

**Skin So Soft
for Acne-Prone Skin**

FOR FACE

A. Soothing Spot Gel
Skin looks radiant, even-toned. With rosemary, madecassoside and mint extracts. Leave on, dries clear. .5 fl. oz.
072-721 reg. \$18
\$13.99

B. Foaming Cleanser
With plant-based scrub, rosemary, madecassoside and mint extracts. 5 fl. oz.
041-647 reg. \$17
\$12.99

FOR BODY

C. Soothing Gel
Helps visibly improve tone and texture. Cooling sensation. With glycerin, allantoin and panthenol. Leave on, dries clear. 6.1 fl. oz. **040-636**
reg. \$20
\$15.99

D. Exfoliating Body Wash
Nondrying, nonirritating. With rosemary oil. 10.1 fl. oz. **041-556**
reg. \$20
\$15.99

E. Gentle Body Wash
Nondrying, nonirritating. With rosemary oil. 10.1 fl. oz. **039-325**
reg. \$20
\$15.99

F. Body Pads
Pre-soaked exfoliating cotton pads. Helps even tone. With hyaluronic acid and panthenol. 70 pads.
039-330 reg. \$30
\$24.99

Suitable for daily use and free of synthetic fragrances.



**AVON SENSES
GRATITUDE
LAVENDER &
CEDARWOOD**

Fill your space with the calming and soothing scents of lavender and cedarwood.

❖ A. Candle
1 wick. Soy-wax blend. 3" diam. 3½" H. Burn time, 40 hours. 7 oz. net wt. **504-686 reg. \$23 \$18.99**

B. Air Diffuser
Six diffuser reeds. Fragrance oil, 2.37 fl. oz. **504-724 reg. \$30 \$24.99**

C. Bath Salts
Pour a handful under warm running water. With sea salt, glycerin and sunflower seed oil. Use 1-3 times a week. 12.5 oz. net wt. **504-557 reg. \$23 \$18.99**

D. Shower Steamers
Place one on shower shelf and activate with shower steam (avoid heavy stream of water). Each, 1 oz. net wt. **504-428 reg. \$26 \$20.99** six shower steamers

Place candle on trivet or holder before lighting to protect furniture. Never leave burning candles unattended. Keep away from children and pets.



A. Body Mist
With aloe vera extract, refreshes and leaves skin feeling soothed. 8 fl. oz. **034-888 reg. \$18 \$14.99**

B. Shower Gel
Moisturizing cleanser derived from coconut. 10 fl. oz. **035-190 reg. \$17 \$13.99**

C. Body Lotion
Smooths and softens with moisture-rich shea butter and vitamin E. 8 fl. oz. **035-152 reg. \$17 \$13.99**

D. Hand Soap
With moisturizing glycerin, leaves hands feeling clean and soft. 10.1 fl. oz. **852-081 reg. \$13.99 \$10.69**

E. Hand Cream
With shea butter and antioxidants, leaves dry hands feeling buttery smooth. 2.5 fl. oz. **852-096 reg. \$6 \$4.99**

F. Body Scrub
Remove dry, dead skin while shea butter and olive and avocado oils help moisturize. 9 oz. net wt. **530-314 reg. \$22 \$17.99**

COZY VANILLA & COCONUT

Envelop yourself in a cozy cloud of comforting vanilla, creamy coconut and calming chamomile.

Free from parabens, mineral oil, silicone, phthalates and dyes.



SENSES Fresh Bergamot / Sparkling Grapefruit



Hand Cream
With shea butter and antioxidants.
2.5 fl. oz. **852-498** reg. \$6
\$4.99

Hand Soap
With moisturizing glycerin.
10.1 fl. oz. **852-297** reg. \$13.99
\$10.69

Shower Gel
Coconut-derived cleanser.
10 fl. oz. **034-873**
reg. \$17
\$13.99



FRESH BERGAMOT & WILD MINT
A fresh bouquet of dewy flowers mixed with spicy bergamot, clean wild mint and luminous solar musk.

Free from parabens, mineral oil, silicone, phthalates and dyes.



Hand Cream
With shea butter and antioxidants.
2.5 fl. oz. **852-120** reg. \$6
\$4.99

Hand Soap
With moisturizing glycerin.
10.1 fl. oz. **852-115** reg. \$13.99
\$10.69

Body Mist
With refreshing aloe vera extract.
8 fl. oz. **034-687**
reg. \$18
\$14.99



SPARKLING GRAPEFRUIT & ORANGE BLOSSOM
A juicy mix of zesty grapefruit, bright orange blossom, delicate honeysuckle and luscious peach.

SENSES Shower Gels / Hand Soaps



Senses Hydrating Shower Gels

Juicy Pomegranate & Mango
462-139

Silky Vanilla
462-105

Fresh Cucumber & Melon
462-071

Blushing Cherry Blossom
462-033

5 fl. oz. each
reg. \$6
\$3.69 each

Senses Silky Vanilla Hand Soap
Comforting vanilla and brown sugar.
8.1 fl. oz.
356-435
reg. \$10
\$5.99



Senses Fresh Cucumber & Melon Hand Soap
Crisp cucumber and juicy melon.
8.1 fl. oz.
359-362
reg. \$10
\$5.99



SENSES Bubble Bath



Vanilla Cream Bubble Bath
Rich and creamy.
24 fl. oz.
425-029
reg. \$11
\$8.69



Cherry Blossom Bubble Bath
Flirty and sweet.
24 fl. oz.
425-033
reg. \$11
\$8.69



Orange & Honeysuckle Bubble Bath
Fresh and sunny.
24 fl. oz.
047-808
reg. \$11
\$8.69



Endless Ocean Bubble Bath
Marine and breezy.
24 fl. oz.
425-048
reg. \$11
\$8.69



Lily & Honeysuckle Blossom Bubble Bath
Fragrant and refreshing.
24 fl. oz.
423-394
reg. \$11
\$8.69



Soft Pink Bubble Bath
Lilac and rose.
24 fl. oz.
425-052
reg. \$11
\$8.69



Sensitive Skin Bubble Bath
Chamomile scent.
24 fl. oz.
424-754
reg. \$11
\$8.69



Lavender Garden Bubble Bath
Soft and serene.
24 fl. oz.
424-735
reg. \$11
\$8.69



PHYSIOGEL HYPOALLERGENIC

Daily Moisture Therapy Body Lotion*
For dry and sensitive skin.
6.7 fl. oz.
096-258
reg. \$30
\$23.99



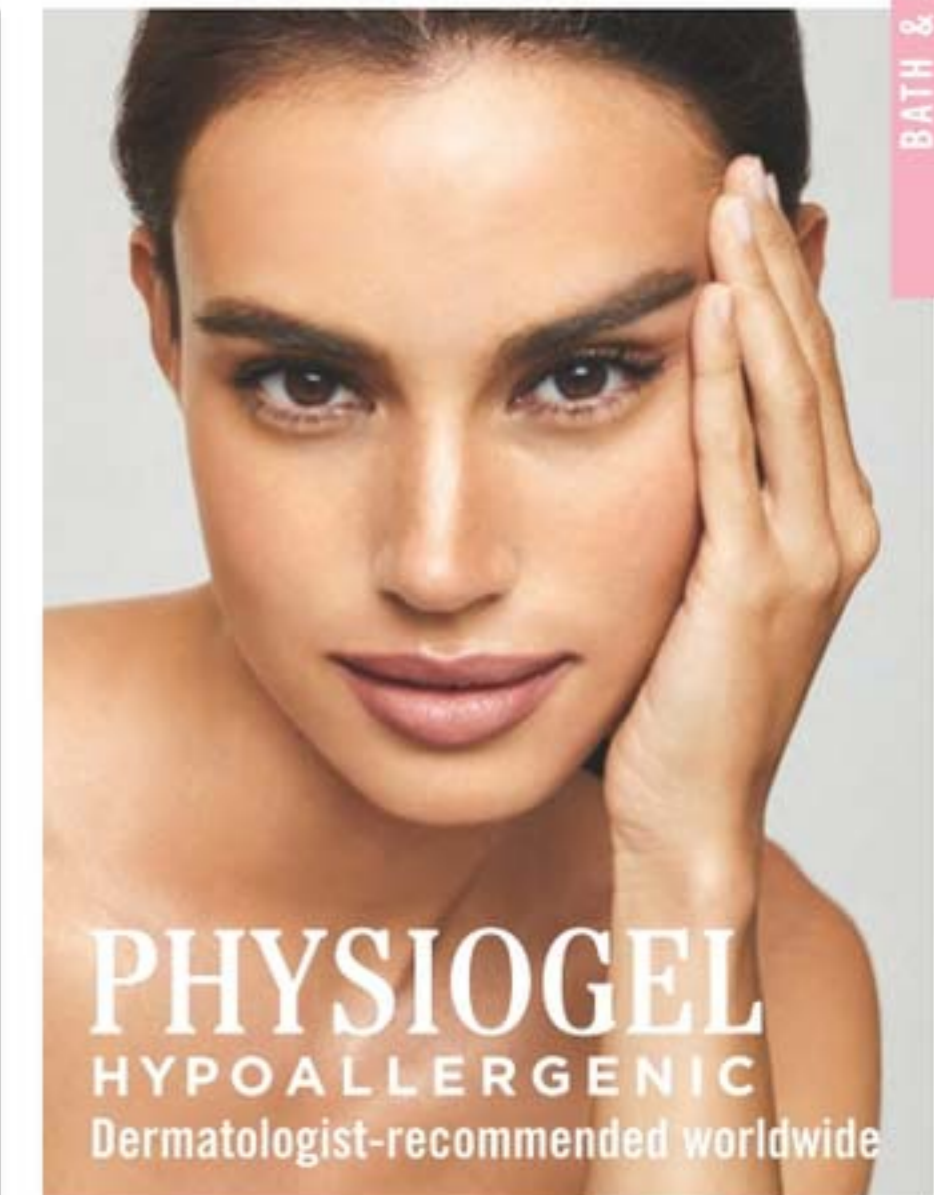
Daily Moisture Therapy Dermo-Cleanser for face
Soap-free facial cleanser for dry and sensitive skin. 5 fl. oz.
094-384
reg. \$24
\$18.99



Daily Moisture Therapy Facial Cream*
For normal to dry sensitive skin.
5.1 fl. oz.
847-511
reg. \$42
\$33.49



Daily Moisture Therapy Face Mask
With panthenol ceramide and squalane to help maintain moisture in skin for a dewy glow.
.91 fl. oz. 459-490
reg. \$25
\$19.99 pack of 5



PHYSIOGEL HYPOALLERGENIC
Dermatologist-recommended worldwide

BIOMIMIC TECHNOLOGY™
Works naturally with skin, helping to replenish lost lipids to help strengthen your moisture barrier so your skin feels less dry and sensitive. Clinically proven moisturization.

Calming Relief A.I. Cream* for face
Soothes red, itchy skin associated with dryness.
3.3 fl. oz. 096-865
reg. \$42
\$33.99



Calming Relief A.I. Face Mask
Helps calm dry, red, itchy and sensitive skin. With moisturizing panthenol, ceramide and squalane, and antioxidants to help protect skin from irritants. .91 fl. oz.
459-447 reg. \$25
\$19.99 pack of 5



*The National Eczema Association has awarded the Seal of Acceptance™ to Physiogel Hypoallergenic Calming Relief A.I. Cream and Daily Moisture Therapy Body Lotion and Facial Cream.

MOISTURE THERAPY

Extra Strength Cream
24-hour moisturization.
Fragrance-free.
6.17 oz. net wt.
772-972
reg. \$8
\$5.39



Intensive Healing & Repair Hand Cream
Relieves extremely dry, chapped hands.
Fragrance-free.
4.2 fl. oz.
786-296
reg. \$6
\$2.69



Calming Relief Hand Cream
With colloidal oatmeal. Relieves the itchiness associated with dry hands.
4.2 fl. oz.
786-349
reg. \$6
\$2.69



Intensive Healing & Repair Bonus-Size Body Lotion
72-hour moisture for extra-dry skin.
Fragrance-free.
33.8 fl. oz.
611-644
reg. \$20
\$13.99



Calming Relief Bonus-Size Body Lotion
Soothes and relieves dry, itchy skin.
Fragrance-free.
33.8 fl. oz.
611-663
reg. \$20
\$13.99



MICROBIOME

Avon Microbiome by REACH® Hygiene Deodorant Stick
With prebiotics that help control body odor by helping to keep skin's microbiome balanced. Removes sweat. Floral citrus scent. Aluminum-free. 24-hour odor protection.
2.65 oz. net wt.
524-528 reg. \$13
\$10.99



Microbiome Balance + Soothe Body Lotion
With prebiotics and para-probiotics, helps to balance and soothe your skin. Replenishes moisture to leave skin softer, smoother and healthier-looking. 13.2 fl. oz. 438-082
reg. \$25
\$20

Microbiome Balance + Soothe Body Wash
With prebiotics and para-probiotics, helps to balance and soothe your skin. Visible capsules for a refreshing cleansing experience. Softens while it gently cleanses. 13.2 fl. oz. 438-078
reg. \$23
\$18

**Smooth Moves
Anti-Cellulite Massager**

Use with gel to help firm and smooth skin. Rotating rollers help promote circulation and reduce the appearance of cellulite. Plug-in device. **011-296** reg. \$70 **\$62.99**



**Smooth Moves
Anti-Cellulite Cooling Gel**

L-carnitine and chai hu help target fat cells. 6.7 fl. oz. **722-722** reg. \$21 **\$12.99**



**Affirm Yourself
Firming Body Cream**

Caffeine complex helps skin look more toned. 6.7 fl. oz. **522-970** reg. \$21 **\$12.99**



Gentle Breeze protects against
sun+bugs+water

- SPF 30
- water-resistant
- DEET-free/PABA-free
- With vitamin E & aloe
- Repels mosquitoes that may carry and transmit the Zika virus

**BUG GUARD PLUS IR3535®
GENTLE BREEZE SPF 30 LOTION**
No need to wash off. Dermatologist-tested. 4 fl. oz. **925-819** reg. \$15 **\$9.99**



Expedition for all-in-one protection from
sun+bugs

- protects against mosquitoes, deer ticks, no-see-ums, sandflies, gnats and biting midges
- repels deer ticks that may carry and transmit Lyme disease
- DEET-free/PABA-free
- water-resistant
- SPF 28 & SPF 30

**BUG GUARD PLUS IR3535®
EXPEDITION**
No need to wash off. Dermatologist-tested.

A. Aerosol Spray SPF 28
Repels mosquitoes for 8 hours, deer ticks for 12 hours. 4 oz. net wt. **521-370** reg. \$20 **\$14.99**

B. Family Size Pump Spray SPF 30
8 fl. oz. **255-259** reg. \$24 **\$17.99**

C. Pump Spray SPF 30
Repels mosquitoes for 8 hours, deer ticks for 10 hours. 4 fl. oz. **255-278** reg. \$15 **\$9.99**

D. Travel Size Pump Spray SPF 30
2 fl. oz. **943-533** reg. \$12 **\$8.99**



Read and follow label directions and precautions.

Picaridin for when bugs are most active
dawn+dusk

- protects against mosquitoes, deer ticks, sandflies, no-see-ums, gnats, biting midges and black flies
- repels deer ticks that may carry and transmit Lyme disease
- DEET-free/PABA-free
- With vitamin E & aloe

BUG GUARD PLUS PICARIDIN

A. Travel Size Pump Spray
2 fl. oz. **009-600** reg. \$12 **\$8.99**

B. Pump Spray
Repels mosquitoes for 8 hours, deer ticks for 12 hours. 4 fl. oz. **255-373** reg. \$15 **\$9.99**

C. Family Size Pump Spray
8 fl. oz. **255-187** reg. \$24 **\$17.99**

D. Towelettes
Repels mosquitoes for 8 hours, deer ticks for 12 hours. Resealable bag holds 8 packets. Each towelette, 9" L x 5½" W. Each, .3 fl. oz. **269-562** reg. \$16 **\$11.69** pack of 8

E. Aerosol Spray*
Repels mosquitoes for 6 hours, deer ticks for 7 hours. 4 oz. net wt. **315-243** reg. \$20 **\$14.99**



Read and follow label directions and precautions. *Aerosol Spray does not contain aloe.

Your at-home spa with easy-to-use tools



NEW

Exfoliation Mitt

Helps remove dead skin and keep your skin feeling soft and smooth. Microfiber jacquard, with nylon/spandex cuff. **439-734** reg. \$11 **\$8.99**

NEW

Body Massager

Use to help stimulate circulation and relieve tension in muscles, especially in back and limbs. Fits into palm for easy control and flexibility with customizable pressure. **439-920** reg. \$11 **\$8.99**



sunless glow

Get a customized sun-kissed tan anywhere... even at home.

Veilment Lumière Sunless Tanning Serum

The more drops, the deeper the tan. Color-correcting technology visibly evens tone. Suitable for different skin tones. Antioxidant-rich with skin-nourishing hemp seed oil. Dermatologically tested, hypoallergenic and vegan. **Light/Medium 422-307** **Medium/Dark 422-326** Each, 1.01 fl. oz. reg. \$24 **\$19.99 each**



Mix and blend into daily body moisturizer for a customized, natural glow.

HIMALAYA PINK SALT

Exfoliating Soap

Daily body scrub and cleansing bar, with mineral-rich Himalayan pink salt, walnut shell, apricot seed and cranberry powder. Calming sage scent. 5.3 oz. net wt. **260-440** reg. \$8 **\$6**

Body Scrub & Cleanser

Mineral-rich Himalayan pink salt. Calming sage scent. 13.5 fl. oz. **708-252** reg. \$15 **\$13.69**



Black Rose Body Scrub & Cleanser

French rose oil and apricot-seed powder. Aromatic black rose scent. 13.5 fl. oz. **707-969** reg. \$15 **\$13.69**



Dead Sea Salt Body Scrub & Cleanser

Israeli Dead Sea salt. Energizing citrus-ginger scent. 13.5 fl. oz. **707-988** reg. \$15 **\$13.69**





Veilment CBD Soothing & Nourishing Body Cream
 Concentrated formula. Visibly soothes and smooths. Geranium scent. No THC. 1.7 fl. oz.
 524-509
 reg. \$33
\$29.50



Veilment CBD Nourishing Body Cream
 Skin feels soft, smooth and nourished. Jasmine scent. No THC. 5 fl. oz.
 524-513
 reg. \$33
\$29.50



Veilment CBD Nourishing Body Cream (Tube)
 Same formula as original, now in a convenient tube. Skin feels soft, smooth and nourished. Jasmine scent. No THC. 6.7 fl. oz.
 254-229
 reg. \$38
\$33



Veilment Hemp Seed Oil Dry Body Oil
 Light, easily absorbed. Helps deeply nourish and hydrate dry and irritated skin. Fragrance-free. Hypoallergenic. 5 fl. oz.
 564-106
 reg. \$35
\$28



Veilment Hemp Seed Oil Lip Balm
 Hemp-infused lip balm enhanced with moisturizing jojoba and coconut oils for deeply hydrated, naturally conditioned lips. .14 oz. net wt. Clear
 957-058
 reg. \$2.50
\$1.69



Veilment Hemp Seed Oil Lip Balm—Clear
 No THC. .14 oz. net wt.

Veilment CBD Soothing & Nourishing Body Cream
 No THC. 1.7 fl. oz.

2-PIECE SET
\$22.99
OVER \$35 VALUE
 438-116



Veilment CBD Nourishing Body Cream
 No THC. 5 fl. oz.

Veilment CBD Nourishing Body Cream (Tube)
 No THC. 6.7 fl. oz.

2-PIECE SET
\$35.99
\$71 VALUE
 438-140



FOOT WORKS

**Overnight
Renewing
Cream**
3.4 fl. oz.
295-205
reg. \$9
\$5.99



**Deep
Moisturizing
Cream**
2.5 fl. oz.
308-962
reg. \$6
\$4.69



**Intensive
Moisture
Foot Cream**
Suitable for
diabetics.
2.5 fl. oz.
302-012
reg. \$6
\$4.99



Pedicure Tool
4-in-1 tool!
Plastic.
3 1/8" L x
1 3/4" W x
1 1/2" H.
Includes:
fine-grain file,
metal file,
pumice,
brush.
592-712
reg. \$11
\$8.39



**Maximum
Strength
Cracked
Heel Cream**
2.5 fl. oz.
310-404
reg. \$7
\$5.99



**Arthritis
Achy
Foot and
Muscle
Cream**
2.5 fl. oz.
314-194
reg. \$7
\$5.99



Pedicure Kit
Case, 3 1/2" L x 4 3/4" W.
Metal, man-made
materials.
Includes: nail clipper,
toenail clipper,
nail file, scissors,
cuticle pusher.
121-029
reg. \$11
\$8.39



**Deodorizing
Spray**
Can also
be used in
footwear.
3.5 oz. net wt.
313-236
reg. \$10
\$7.99



**Lavender
Softening Balm**
1.7 oz. net wt. 312-560
reg. \$6
\$4.99



DEODORANTS



Black Suede 337-403
Mesmerize 663-442

**Roll-On
Anti-Perspirant
Deodorant**
Each, 2.6 fl. oz.
reg. \$3.60
\$2.69 each



On Duty Unscented 926-820
On Duty Sport 094-365
On Duty Original 393-970
Cool Confidence Original 926-777
Cool Confidence Baby Powder 926-815
Feelin' Fresh Original 925-546



Far Away 836-226
Haiku 836-264
Imari 180-887
Rare Gold 836-250
Rare Pearls 836-245
Night Magic Evening Musk 836-298
Odyssey 836-317
Timeless 941-583

**Perfumed
Liquid
Deodorant**
Soft floral
scent.
2 fl. oz.
687-681
reg. \$6
\$4.50



ESSENTIALS Lip Balms / Bar Soaps / Shower Brush

Moisture Therapy
Intensive Healing & Repair Moisturizing Lip Treatment Balm .14 oz. net wt. **207-949** reg. \$2 **99¢**



FMG Flavor Savers Lip Balm
Vanilla **209-501**
Melon **209-334**
Each, .14 oz. net wt. reg. \$2 **99¢ each**



Veilment Care Lip Balm
Infused with naturally moisturizing jojoba oil and coconut oil to keep lips soft and supple. Delicately scented and tinted.
Aloe (grape-flavored) **141-038**
Coconut **140-983**
Each, .14 oz. net wt. reg. \$2 **99¢ each**



Veilment Care Moisturizing Bar Soap
Derived from olive oil and infused with coconut oil. 2.8 oz. net wt. **380-864** reg. \$2.50 **\$1.99**



Veilment Care Soothing & Relaxing Bar Soap
Botanical and floral scent. With lavender oil extract to help calm and soothe. Free from parabens and phthalates. Each, 4.9 oz. net wt. **059-937** reg. \$8 **\$6.49** set of 3



Avon Shower Brush
Long handle to easily reach down back. Brush helps to remove dead skin cells as it cleanses. Back of brush features many massage nubs. Non-slip, comfort handle has a convenient hanging hold for easy storing and allows brush to dry quickly. **904-727** reg. \$10 **\$7.99**

EUTHYMOL uniquely flavored, classic oral care



Loved for over 122 years for its unique wintergreen flavor, this classic oral care brand is formulated to help keep teeth and gums healthy with a blend of anti-plaque and specially refreshing ingredients. **Feel the difference!**

Euthymol Toothpaste
Fluoride-free. Strong, unique flavor. With ingredients to keep breath fresh and help remove plaque. Recyclable aluminum vintage tube. 3.7 oz. net wt. **295-406** reg. \$10 **\$6.99**

Euthymol Toothbrush Regular
Small head with soft bristles reaches the back teeth and is curved to hug gum line for deep and full cleaning. **301-150** reg. \$6 **\$3.99**

Euthymol Toothbrush Classic
Larger head with soft bristles covers five teeth at a time for fast and efficient cleaning. Curved to hug gum line. **301-092** reg. \$6 **\$3.99**

REACH® & LISTERINE® FLOSS always remember to floss!

REACH® Unflavored Waxed Floss
Accepted by the American Dental Association. 55 yards. 239-317 reg. \$3 **\$1.99**



REACH® Mint Waxed Floss
The #1 selling floss from REACH®. Refreshing mint flavor. Accepted by the American Dental Association. 55 yards. 239-302 reg. \$3 **\$1.99**



LISTERINE® Cool Mint™ Floss
Waxed coating is shred-resistant. Mint flavor for the feeling of clean, fresh breath. 55 yards. 239-355 reg. \$5 **\$3.99**



LISTERINE® Ultraclean® Mint Floss
With patented MICRO GROOVES® technology for greater plaque removal and superior cleaning. 30 yards. 239-321 reg. \$5 **\$3.99**



LISTERINE® Ultraclean® Access® Mint Flosser Refill
Disposable mint-flavored floss heads. For use with the LISTERINE® Ultraclean® Access® Flosser. 239-374 reg. \$7 **\$5.64 pack of 28**

LISTERINE® Ultraclean® Access® Unflavored Flosser Refill
Disposable unflavored floss heads. For use with the LISTERINE® Ultraclean® Access® Flosser. 239-393 reg. \$7 **\$5.64 pack of 28**



REACH® advanced technology helps remove plaque where brushing can't



REACH® Professional Floss Picks
Acute angle (14°), like dental tools, for better reach. Sturdy pick easily fits between teeth. Dented handle for a better grip. Mint flavor. Pack of 90. 630-179 reg. \$6 **\$4.59 pack of 90**



BATH & BODY

REACH® Interdental Brush

Angled 14°, like dental tools, it helps clean hard-to-reach spots, including back corners. Removes up to 30% more plaque compared to brushing alone! Customized for different spaces between teeth. Specially coated wire for gum protection. Ribbed edge for a better grip. reg. \$5 **\$3.99 each**



EXTRA TIGHT
For extra-tight spaces. Pack of 10. 630-236



TIGHT
For tight spaces. Pack of 10. 630-934



WIDE
For tight to wide spaces. Pack of 10. 630-164



PERIOE THERA-WHITE contains hydrogen peroxide



Instant Whitening LED Light System
Use hydrogen peroxide gel with LED light for 10 minutes. Requires two lithium batteries (included). Refill syringe can be purchased separately. Gel, .17 fl. oz.
469-315 reg. \$55
\$32.99 the kit



Dental Whitening Strips
Whitens in just 30 minutes. In 12 days, see whiter teeth for six months. Clear gel strip with hydrogen peroxide. Apple Mint flavor.
954-719 reg. \$24
\$19.99
box of 20 strips

Whitening Gel
Use 1-2X a day. Can also be used as a refill with LED system. Gel, .17 fl. oz.
616-718 reg. \$24
\$9.99
lowest price ever



APPLY GEL with syringe. LET DRY for 1-2 minutes. Do not drink or eat for an hour. REMOVE RESIDUE. Brush or rinse.



Teeth Whitening Pen
Clear gel with hydrogen peroxide and an easy-to-use silicone tip. .13 fl. oz. **908-225**
reg. \$26
\$19.99



PERIOE Microbiome / White Action / Himalaya Pink Salt

Perioe Microbiome Toothpaste
With fluoride, plus microbiome technology containing prebiotics to help maintain a healthy oral care balance.



Sensitive
Helps soothe sensitive teeth and fight cavities. With charcoal and propolis extract. Clean Mint flavor. 3.5 oz. net wt. **543-306 reg. \$11**
\$8.99



Whitening
Helps remove stains and brighten smile while fighting cavities. With charcoal and lemon extract. Cool Mint flavor. 4.1 oz. net wt. **543-287 reg. \$7**
\$5.99



Total Care
Helps fight plaque and cavities, and promotes fresh breath. With charcoal and propolis extract. Strong Mint flavor. 5.4 oz. net wt. **543-268 reg. \$6**
\$4.99

EFFECTIVELY REMOVES PLAQUE AND STAINS

CAVITY PROTECTION

WHITENS & REMOVES PLAQUE
BLANCHIT ET ENLÈVE LA PLAQUE

NEW

Perioe White Action Toothpaste Fresh Mint
Fluoride-free. With baking soda. Cleanses and helps remove plaque. 5.6 oz. net wt. **735-384 reg. \$2.99**
\$1.99

Perioe White Action Toothbrush
Easy-grip rubber pads. Round-edge, medium bristles. **609-671 reg. \$1.29**
99¢

CLEANS AND WHITENS TEETH

FRESH MINT FLAVOR



Perioe Himalaya Pink Salt Toothpaste Pump Ice Mint
Creamy paste. Over 2.9X as much toothpaste as the tube. Fluoride-free. 10 oz. net wt. **883-883 reg. \$12**
\$10

**Whitening Essentials
Toothpaste
Perioe Black Charcoal
Clean Mint**

With 10X more activated charcoal (compared to Blanc Charcoal) to help remove stains and brighten teeth. 5.5 oz. net wt. **820-622** reg. \$11 **\$9.19**



**Whitening Essentials
Toothbrush
Medium
Blanc Charcoal**
Infused with activated charcoal to help your teeth look clean and bright. **474-162** reg. \$6 **\$4.80**

**Whitening Essentials
Toothpaste
Blanc Charcoal
Fresh Mint**

With activated charcoal to help remove stains and brighten teeth. 5.5 oz. net wt. **480-460** reg. \$10 **\$8.19**



**Whitening Essentials
Toothpaste
Original
Cool Mint**

With highly effective whitening agents to keep your smile bright. 5.5 oz. net wt. **478-259** reg. \$10 **\$8.19**



HEMP FOR HAIR

shampoo and conditioner with cold-extracted hemp seed oil



HAIR CARE

Contains **omega 3-6-9**, known to help moisturize and nourish hair and **prevent breakage** with **weightless hydration** that delivers **full volume**.

Elastine HempharmX
Vegan formulas. Both silicone-free. Shampoo is sulfate-free.

Hydrating Shampoo 359-836
Hydrating Conditioner 360-544
Each, 13.5 fl. oz. reg. \$24 **\$20 each**

ADVANCE TECHNIQUES

360 Nourish with Moroccan Argan Oil Leave-In Treatment
Moisturizes dry, damaged hair. Infuses it with instant shine and silky smoothness. 2 fl. oz. **718-867** reg. \$16 **\$11.69**

Dry Ends Serum
Helps mend and nourish split ends instantly. With pro-vitamin B. Hair looks smooth and silky. 2 fl. oz. **883-261** reg. \$11 **\$7.99**

Daily Shine 2-in-1 Shampoo & Conditioner
Leaves hair feeling clean and conditioned, and frizz-free. Suitable for daily use. 11.8 fl. oz. **803-230** reg. \$11 **\$8.99**



Root Touch-Up

An instant way to cover up your roots and bare spots. Built-in mirror. Each, .25 oz. net wt. reg. \$18 **\$15.99 each**

SIMULATION



before touch-up after touch-up



Reddish Brown
243-627

Light Brown
244-642

Dark Brown
245-213

Black
245-251



100% grey coverage and rich, long-lasting color... without ammonia, parabens, mineral oil or benzophenone. For your most luxurious locks and healthy-looking hair. **No appointment necessary.**

Elastine Salon de Color
reg. \$9.99
\$7.99 each



BROWNS
Make faded Brown color vibrant!



REDS & AUBURNS
Refresh, brighten or deepen color.



BLONDES
Lighten roots or completely color.



BLACKS
Make an impact for a dramatic look.



KICK BRASS

Visibly **repair damaged hair**. Keep it looking **vivid** and **brass-free** with healthy **shine**.



NEW

Elastine Salon de Color Color Vibe
Nonirritating formula, suitable for any hair/scalp type.
Purple Shampoo **436-109**
Purple Conditioner **436-955**
Each, 8.4 fl. oz.
reg. \$17
\$13.99 each



WHAT'S IN IT

VIOLET PIGMENT
helps neutralize brassy yellow and orange tones

CAMELLIA OIL & GREEN TEA EXTRACT
help protect and define hair color

- **HYDROLYZED KERATIN**
- **PANTHENOL** • **COLLAGEN**

help repair weakened and damaged hair

HYALURONIC ACID
helps hydrate hair and scalp and reduce frizziness

APPLE CIDER VINEGAR
helps boost radiance





Elastine PropoliThera

Volumizing

Enhances texture so hair looks fuller, thicker, stronger. Each, 16.9 fl. oz.

- A. Shampoo **892-607**
- B. Conditioner **892-870**

Damage Repair

Helps hair appear smooth and manageable. Each, 16.9 fl. oz.

- C. Shampoo **893-713**
- D. Conditioner **893-728**

E. Hair Oil Serum

Helps to strengthen, protect, moisturize and smooth hair, and to add shine while styling. 5.7 fl. oz. **895-190**

F. Hair Mask

Enriched with nutrients to help deeply nourish hair and mend damaged split ends. 10.1 fl. oz. **895-185**

reg. \$18 each
\$15.99 each



WHAT'S IN IT:

PROPOLIS
 (tree sap and beeswax)
 with antioxidants
 and minerals

HONEY
 helps restore moisture

ROYAL JELLY
 (bee food) helps revive
 natural luster



**4X ANTI-FRIZZ OIL
 COMPLEX WITH:**
MORINGA OIL
JOJOBA OIL
SAFFLOWER OIL
ALMOND OIL

helps visibly minimize
 frizz so curly locks
 look smoother

**Elastine PropoliThera
 Bee Curly**

Bring back healthy-looking locks and visibly boost shine with intensely moisturizing formulas with a patented technology* that helps care for curly hair to create silky, super-lustrous curls even after the first use.

Shampoo

16.9 fl. oz. **059-975**
 reg. \$29
\$23.99

Conditioner

16.9 fl. oz. **060-846**
 reg. \$29
\$23.99

Serum

5.7 fl. oz. **061-565**
 reg. \$29
\$23.99

*Shampoo and conditioner only.



FREE Elastine PropoliThera Hair Oil Serum with purchase of any Elastine PropoliThera Shampoo and Conditioner (including Bee Curly), pages 154 thru 155 Sold separately on page 154. \$18 value. Limited quantities.

THIN, WEAK, DAMAGED HAIR?



SEE NEW LIFE ADDED TO HAIR IN SECONDS

Serum Treatment
Upon contact with water, nutrient-rich, moisturizing liquid visibly transforms into a creamy formula. 7.8 fl. oz. 359-821 reg. \$22 \$18



Aloe Dual-Active Hair Serum
Intense hydration with vitamins, minerals and other nutrients to bring damaged or chemically processed hair back to life. 3.4 fl. oz. 102-585 reg. \$30 \$25



Curl Cream
Rich hydration for bouncy, defined curls. Reduces frizz for a smooth, healthy-looking shine. 5 fl. oz. 102-475 reg. \$19 \$15



Leave-In Conditioner
Hydrates and nourishes dry hair, infusing it with rich luster. 8.1 fl. oz. 102-570 reg. \$19 \$15



ELASTINE MOISTURE ESSENTIALS

With richly moisturizing **ceramide** to help visibly strengthen strands, protect hair from wear and tear, and promote elasticity and shine.



ceramide + biotin

Helps dry, damaged hair look and feel fuller and healthier.

Shampoo 495-106

Conditioner 495-110

Each, 12.7 fl. oz. reg. \$9 \$6.99 each



ceramide + argan oil

Helps moisturize and reduce split ends, and keeps locks looking shiny and smooth.

Shampoo 495-125

Conditioner 495-130

Each, 12.7 fl. oz. reg. \$9 \$6.99 each

argan oil[®] Shine Hair Oil Serum

Helps to tame frizz, seal split ends for lustrous-looking shine. 2.54 fl. oz. 495-144 reg. \$9 \$6.99



*Does not contain ceramide.



FREE Elastine Moisture Essentials Shine Hair Oil Serum with purchase of any two Elastine Moisture Essentials products on page 157. Sold separately on page 157. \$9 value. Limited quantities.



SPRING IS IN THE HAIR!

Shampoo and conditioner in one, with patented 2-in-1 technology, moisturizes hair while controlling odors so it looks and feels fresh and smooth, with a **fragranced formula** to give it a forever-springtime scent. Free of sulfates and parabens. Suitable for daily use.

Love Me

Jasmine and ylang-ylang. 8.45 fl. oz.
154-857 reg. \$16
\$12.99

Fresh Citrus

Lime, mandarin and basil. 8.45 fl. oz.
154-876 reg. \$16
\$12.99

Pure Breeze

White rose and Bulgarian rose. 8.45 fl. oz.
154-861 reg. \$16
\$12.99

want volume?

Rosemary & Sea Salt

With rosemary to help promote thicker hair and scalp health, sea salt to add body.

Volumizing Shampoo 240-556

Conditioner 246-831

6.7 fl. oz. reg. \$4.50

\$3.79
each



Elastine Botanicals

Infused with revitalizing babassu seed oil, chamomile flower water and lemon chestnut extract, and pH balanced, like healthy hair, it helps bring damaged hair back to life, adding dewy moisture for a smooth, natural-looking sheen.

NO • Parabens • Silicone • Mineral oil
• Triclocarban • Triclosan

dry hair?

Cherry Blossom & Hyaluronic Acid

Moisturize dry, damaged hair with our hyaluronic acid-infused formula as thirsty strands drink it up.

Moisturizing Shampoo 239-943

Conditioner 240-059

6.7 fl. oz. reg. \$4.50

\$3.79
each



frizzy hair?

Argan & Castor

With nourishing ingredients, helps protect hair from damage and breakage. Adds luster and smoothness.

Anti-Frizz Shampoo 150-866

Conditioner 150-904

6.7 fl. oz. reg. \$5.39

\$4.49
each



CHI® ESSENTIALS / CHI® ESSENTIALS REVIVE KERATIN + BONDING

CHI® Essentials Replenishing Shampoo
Gentle daily shampoo with essential vitamins, minerals and amino acids. No sulfates or parabens, so it won't strip hair of natural oils. Safe for color-treated hair. 12 fl. oz. **589-140** reg. \$20 **\$16.99**



CHI® Essentials Moisturizing Conditioner
Lightweight daily conditioner. Infused with aloe to lock in rich moisture. With vitamins A and B to help strengthen hair from roots to ends, increase elasticity and help smooth split ends and frizz. 12 fl. oz. **589-409** reg. \$20 **\$16.99**



CHI® Essentials Repairing Serum
Deeply penetrating-yet-lightweight serum helps strengthen, protect, moisturize and smooth. With vitamin A to help seal split ends, and rosemary to help boost volume and shine. 6 fl. oz. **589-413** reg. \$33 **\$27.59**



CHI® Essentials Revive Keratin + Bonding Restoring Shampoo
Cleanses, moisturizes and protects against split ends and frizz. 12 fl. oz. **451-192** reg. \$25 **\$19.99**

CHI® Essentials Revive Keratin + Bonding Protecting Serum
Apply to damp or dry hair for smoothness and shine, and as a hair shield from the sun. 3 fl. oz. **451-340** reg. \$42 **\$34.99**

CHI® Essentials Revive Keratin + Bonding Restoring Conditioner
Helps restore dry, damaged and brittle hair. 12 fl. oz. **451-211** reg. \$25 **\$19.99**



CHI® PRO STYLERS & TOOLS for salon-quality results

CHI® ENVIRO 54® Natural Hold Hair Spray
For brushable hold. Lightweight. Fast-drying. No build-up. Anti-humidity. Thermal protectant for blow-drying. With silk to help build hair's strength and resilience, and natural botanicals to add volume and enhance shine. Paraben-free. 10 oz. net wt. **908-450** reg. \$26.50 **\$21.50**



BioSilk® Silk Therapy®
Replenishes and reconstructs to help repair and protect all hair types. Tames frizz and flyaways and leaves hair silky smooth with reflective shine. Helps shield hair from UV rays, heat and humidity. 5.64 fl. oz. **011-349** reg. \$35 **\$28.99**



CHI® 1" Volcanic Lava Ceramic Pro Spin 'n' Curl
Preset temperature controls with adjustable timers and LED screen display. For any hair type. 12" L. Dual voltage for travel. 11 ft. swivel cord. Use only as directed. **471-527** reg. \$199 **\$179**



ATTACHMENTS INCLUDED



CHI® Advanced Ionic Compact Hair Dryer
Powerful 1875-watt ion generator emits negative ions to reduce drying time. Lightweight, compact design. Rapid Clean Technology with Blue LED light for cleaner air during styling. Adjustable heat and air-speed settings. Removable filter. 6 1/2 ft. cord. Use only as directed. **471-474** reg. \$150 **\$135**



DR. GROOT your solution to thinning hair and anti-dandruff

Scalp Fortifying Serum Treatment
Moisturizes and helps support healthy hair roots and growth. 6.7 fl. oz. **782-271** reg. \$35 **\$29**



Scalp Fortifying Hair-Thickening Shampoo
With coconut oil, cleanses as it helps moisturize dry scalp and hair. 13.5 fl. oz. **778-014** reg. \$35 **\$29**



Premium Scalp Cleansing Brush
Helps promote cleansing of residue while massaging to reinvigorate health of scalp as it helps to stimulate circulation. **065-776** reg. \$19 **\$16**



KEEP SCALP AND HAIR FLAKE-FREE

Anti-Dandruff Scalp Care Shampoo
No silicones. 10.1 fl. oz. **451-412** reg. \$27 **\$21.99**

Anti-Dandruff Scalp Care 2-in-1 Shampoo and Conditioner
10.1 fl. oz. **451-431** reg. \$27 **\$21.99**



DR. GROOT Gradual Effect

cover grey the natural way in 3 weeks

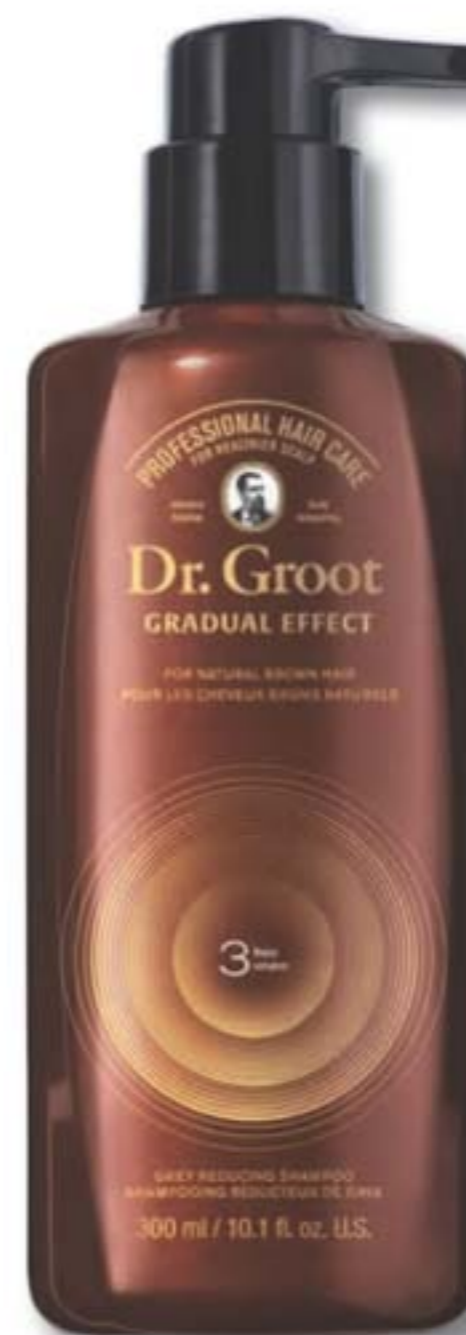
This hair-darkening shampoo and conditioner **darken grey hair gradually** while they **nourish your scalp and hair** with **hydrolyzed collagen** and **biotin**.

Dr. Groot Gradual Effect for Natural Brown Hair

Patented color-bonding technology, formulated with gentle, nonirritating ingredients derived from safflower and gardenia, known to visibly relieve hair-loss symptoms. Leaves hair with lasting natural color. For best results, use shampoo and conditioner together. Dermatologist-tested.

Shampoo
10.1 fl. oz. **740-432** reg. \$41 **\$34**

Conditioner
5.1 fl. oz. **740-447** reg. \$22 **\$18**



HOW TO USE

1. Apply shampoo to wet hair and massage from roots to ends.
2. Leave for three minutes.
3. Rinse off until water gets clear.
4. Apply conditioner to wet hair.
5. Leave for three minutes.
6. Rinse off until water gets clear.

KEY BENEFITS

- ▶ lifts hair volume from roots
- ▶ with gentle ingredients derived from safflower and gardenia known to visibly **relieve hair-loss symptoms**
- ▶ **nonirritating formula** with no harmful chemicals
- ▶ darkens grey hair into a natural brown gradually **in three weeks!***

BEFORE & AFTER



before



after 1 week use



after 2 weeks use

*Results may vary depending on how much grey hair you start with and the frequency of use.

THE WOW DEAL

**5-PIECE SET
ONLY \$40**

\$156 VALUE

269-691

THE SIMPLE SECRET TO
BEAUTIFUL SKIN: CLEANSE,
EXFOLIATE, THEN LAYER ON
A SERUM TO REJUVENATE.

COLLECTION INCLUDES:

**Veilment Natural Spa
Himalayan Pink Salt
Exfoliating Soap**
5.3 oz. net wt.
\$8 value

**Isa Knox LXNEW
Ultimate
Rejuvenating Serum**
1.35 fl. oz.
\$56 value

**Isa Knox Anew Clinical
Revitalize & Reveal
Intensive Peel**
1 fl. oz.
\$45 value

**Isa Knox Anew Clinical
Revitalize & Reveal
Resurfacing Lotion
for Body**
5 fl. oz.
\$34 value

**Rice Water Bright
Foaming Cleanser**
10 fl. oz.
\$13 value



Enjoy special prices and offers with an Avon account or Representative.

© 2023 The Avon Company. All rights reserved.

CAMPAIGN 15, 2023
THE AVON COMPANY
165 BROADWAY, NY, NY 10006

To place an order, call:



Pk of 10 59287-9



Single 59284-9

Brochure effective until _____

Find me at www.avon.com/repstore/ _____



Not applicable in
Puerto Rico or
the Caribbean.



See our commitment at
www.avon.com/animal-welfare

RETURN POLICY If you are not satisfied, return any item within 45 days. View Avon's full 45-Day Return Policy at avon.com/shipping-returns.