

# AVON

CAMPAIGN 15



shop. sale.  
splurge.

all makeup  
up to 65% off

**+ FREE GIFT**  
SEE DETAILS INSIDE

*fmg*  
CASHMERE

*fmg*

GLIMMER

*fmg*

GLIMMER

*fmg*

GLIMMER

GO.

by  
GLIMMER

*fmg*  
GLIMMER









Featured shade:  
Persistent.

give 'em 'tude.

## MATTITUDE IS BACK

NEW & IMPROVED TRANSFER-RESISTANT FORMULA

### fmg Glimmer Mattitude Liquid Lipstick

Lock in vivid, saturated color with a comfortable, non-drying, transfer-resistant formula that wears all day without fading or feathering. With vitamin E and a blend of olive and sunflower oils to help smooth and soften lips. Glides on effortlessly, delivering full coverage in one swipe with a velvety soft matte finish. Formulated without parabens, sulfates and phthalates. Vegan. .12 fl. oz. reg. \$18

**\$13.99**



|                   |                       |                      |                     |                       |                    |                      |
|-------------------|-----------------------|----------------------|---------------------|-----------------------|--------------------|----------------------|
|                   |                       |                      |                     |                       |                    |                      |
| Driven<br>419-050 | Relentless<br>418-752 | Tenacious<br>419-232 | Resolute<br>419-228 | Persistent<br>418-771 | Devoted<br>418-896 | Ambitious<br>419-266 |





**fmg Glimmer Matte Lipstick**  
Vivid color. Velvety feel. Featherlight non-drying formula with pomegranate extract. Buildable medium-to-full coverage. Matte finish. Formulated without parabens, talc, sulfates and phthalates. .10 oz. net wt. reg. \$15

**NOW \$8.49**



**fmg Glimmer Satin Lipstick**  
Lightweight creamy formula with pomegranate extract. Buildable coverage. Satin finish. Formulated without parabens and sulfates. .10 oz. net wt. reg. \$15

**NOW \$8.49**



Featured shade: Blaze.









shop. sale. splurge.  
all makeup  
up to 65% off

#### fmg LOVE Lip Butter

Sheer, high-shine formula with cupuaçu seed butter, mango extract, and apricot kernel and olive fruit oils. Buildable coverage. Vanilla scented. Formulated without parabens, sulfates and phthalates.  
.09 oz. net wt. reg. \$19

**NOW \$10.99**

|   |   |   |   |   |   |
|---|---|---|---|---|---|
|  |  |  |  |  |  |
| Love Affair<br>063-242  | Pucker Up<br>063-128  | Secret Crush<br>063-147   | Tease<br>063-132  | Rendezvous<br>063-166   | Flirtatious<br>063-219  |



#### fmg Glimmer Birthday Balm Lip Crayon

Sheer, soft shine formula with non-GMO shea butter. Formulated without parabens and gluten.  
.1 oz. net wt. reg. \$17

**NOW \$9.49**

|   |   |  |   |
|---|---|--|---|
|  |  |  |  |
| Lovin' Life<br>698-867  | PYT<br>375-691  | Cupcake<br>950-000   | Birthday Suit<br>375-706  |
|  |  |  |  |
| Private Party<br>949-990  | Glammed Up<br>953-268   | VIP<br>951-265   | Fine Wine<br>375-725  |
|  |  |  |   |
| Birthday Post<br>375-730  | Surprise!<br>375-710  |  |   |



#### fmg Glimmer Lip Conditioner

Leaves dry, cracked lips feeling soft and smooth. With mango seed butter, vitamin E, and jojoba and sunflower seed oils. Formulated without parabens, sulfates, phthalates and talc.  
.12 oz. net wt. 794-578  
reg. \$12

**NOW \$6.99**



#### fmg GLOKOLOR Lip Serum Pencil

Refreshes and smooths lips. With peppermint and argan oils. Formulated without parabens and fragrance.  
.06 oz. net wt.

787-508  
reg. \$20

**NOW \$11.99**



Best of  
K-Beauty





Featured shades: GO. by Glimmer Lacquered Lip Gel in Seeing Red, Currant Crush and Orchid Bloom; Whipped Lip & Cheek Tint in Flora and Blushed.

#### GO. by Glimmer Lacquered Lip Gel

Ultimate fusion of shiny gloss and tinted lip color in one. Non-sticky formula with gel-like texture glides on and helps to leave lips feeling soft and cushioned. Infused with a Super-Fruit Extract Complex that includes noni fruit, passionflower and amla fruit extract. Buildable coverage with a glossy finish. Formulated without parabens, talc, sulfates, phthalates and mineral oil. .14 oz. net wt. reg. \$17

**\$12.99 each**

#### NEW SHADES









|   |   |   |   |   |
|---|---|---|---|---|
|  |  |  |  |  |
| Soft<br>922-327   | Fruity Floral<br>922-312  | Whisper Pink<br>750-114   | Sunset Rose<br>750-205  | Waffle Cone<br>750-023  |
|   |   |  |  |  |
|   |   | Orchid Bloom<br>750-320   | Seeing Red<br>750-391   | Currant Crush<br>750-478  |

#### GO. by Glimmer Whipped Lip & Cheek Tint

Ultimate multi-tasker delivers beautiful color to lips and cheeks. With apple fruit extract, an antioxidant known to help promote smooth, glowing skin. Full pigmented coverage with a velvety matte powder finish. Formulated without parabens, talc, sulfates, phthalates and mineral oil. .14 oz. net wt. reg. \$18

**\$13.99 each**

#### NEW SHADES

|   |   |   |   |   |
|---|---|---|---|---|
|  |  |  |  |  |
| Velvet Vanilla<br>922-293   | Cherry Cocktail<br>922-289  | Frozen Pink<br>749-994  | Peony<br>749-865  | Hibiscus Tea<br>750-019   |
|   |   |  |  |  |
|   |   | Blushed<br>749-870  | Flora<br>749-956  | Jam<br>749-850  |





Featured shade:  
fmg Glimmer  
Be Blushed Cheek Color  
in Tropical Peach.

shop. sale. splurge. all makeup  
up to 65% off

**fmg Glimmer Be Blushed Cheek Color**  
Creamy formula with vitamin E. Buildable coverage. Dewy finish. Formulated without parabens, phthalates and fragrance. .14 oz. net wt. reg. \$17

**NOW \$9.49**



**fmg Glimmer Powder Blush**  
Weightless formula with ultrafine pearl and vitamin E. Buildable coverage. Matte finish. Formulated without parabens, phthalates and fragrance. .28 oz. net wt. reg. \$15

**NOW \$8.99**



**fmg Glimmer Powder Illuminator**  
Lightweight buildable formula with vitamin E. Radiant finish. Formulated without parabens, phthalates and fragrance. .35 oz. net wt. reg. \$15

**NOW \$8.99**



**fmg Glimmer Lip & Cheek Stain**  
Highly pigmented, long-wearing gel formula. Brush-tip applicator. Transfer-proof. Formulated without parabens and fragrance. .19 fl. oz. reg. \$17

**NOW \$9.49**



**fmg Colors of LOVE Glow Balm Duo Illuminating Stick**  
Sheer formula with blend of pomegranate extract, mango and shea butter, vitamins E and C, and avocado oil. Soft, pearlescent finish. Formulated without parabens, phthalates and fragrance. .28 oz. total net wt. 924-573 reg. \$22

**NOW \$10.99**







**fmg Glimmer Liquid Eyeshadow**  
Silky lightweight formula glides on effortlessly for ultrafine pearly color that lasts all day. Water-resistant. Will not smudge or crease. No messy fallout. Buildable coverage from a sheer wash of soft sateen sheen to full-on shimmery wow. Formulated without parabens, phthalates, sulfates and talc. Available in Matte Sateen or Shimmer finish. .07 fl. oz. reg. \$14  
**NOW \$7.99 each**

**BEST-SELLING SHIMMER SHADES ARE BACK!**

|                                  |                                     |                                 |                                   |                                    |                                     |                                      |                                    |  |
|----------------------------------|-------------------------------------|---------------------------------|-----------------------------------|------------------------------------|-------------------------------------|--------------------------------------|------------------------------------|--|
|                                  |                                     |                                 |                                   |                                    |                                     |                                      |                                    |  |
| SHIMMER<br>Pink Topaz<br>324-608 | SHIMMER<br>Crystal Lilac<br>324-593 | SHIMMER<br>Rose Gold<br>324-521 | SHIMMER<br>Fool's Gold<br>324-517 | SHIMMER<br>Diamond Dust<br>324-574 | MATTE SATEEN<br>Sunstone<br>324-392 | MATTE SATEEN<br>Moonstone<br>324-612 | MATTE SATEEN<br>Citrine<br>324-631 | MATTE SATEEN<br>Tiger's Eye<br>324-646 |

Featured shades (top to bottom):  
Rose Gold, Diamond Dust, Crystal Lilac,  
Pink Topaz, Citrine, Moonstone,  
Sunstone, Fool's Gold, Tiger's Eye.

shop. sale. splurge. all makeup  
**up to 65% off**

**fmg CathyCat Shadow Gaze  
Matte Color Stick**

Long-wearing formula will not budge or smudge. Buildable and blendable coverage. Matte finish. Formulated without parabens and fragrance. .0476 oz. net wt. reg. \$19

**NOW \$6.49**

|                  |                     |                  |                     |
|------------------|---------------------|------------------|---------------------|
|                  |                     |                  |                     |
| Berry<br>958-619 | Azure<br>959-213    | Mauve<br>958-331 | Rosewood<br>958-547 |
|                  |                     |                  |                     |
| Taupe<br>958-126 | Espresso<br>958-896 | Buff<br>956-912  |                     |



**fmg CathyCat Nine Lives  
Precision Liquid Eyeliner**

Slim-tip brush delivers a precise line of water- and sweat-resistant color that will not skip, tug or smudge. Formulated without parabens, sulfates, phthalates and talc. .068 fl. oz. **Blackest Black 800-829** reg. \$18

**NOW \$6.49**



**fmg LOVE at 1st Sight  
Eyeshadow Palette**

Nine buildable matte and shimmer shades create depth and dimension. Versatile formula with antioxidant vitamin E blends seamlessly. Formulated without parabens, phthalates, talc and fragrance. .23 oz. total net wt. **786-076** reg. \$28

**\$20**

**fmg Glimmer  
Eyeshadow Quad**

Soft powder formula lasts all day. No messy fallout. Buildable coverage. Formulated without parabens and fragrance. Available in Multi and all Matte finishes. .21 oz. total net wt. reg. \$18

**NOW \$8.99**



|                           |                            |                       |                        |
|---------------------------|----------------------------|-----------------------|------------------------|
|                           |                            |                       |                        |
| MULTI<br>Mistress 883-902 | MULTI<br>Goddess 901-330   | MULTI<br>Muse 880-459 | MULTI<br>Minx 885-738  |
|                           |                            |                       |                        |
| MULTI<br>Maven 884-750    | MULTI<br>Temptress 884-731 | MULTI<br>Idol 900-975 | MULTI<br>Vixen 901-474 |

|                          |                          |                            |                       |
|--------------------------|--------------------------|----------------------------|-----------------------|
|                          |                          |                            |                       |
| MATTE<br>Calypso 741-261 | MATTE<br>Tigress 741-333 | MATTE<br>Bombshell 741-170 | MATTE<br>Icon 741-439 |

|                          |                        |
|--------------------------|------------------------|
|                          |                        |
| MULTI<br>Darling 880-789 | MULTI<br>Siren 901-493 |

For Multi Quad finishes, visit Avon.com.



### fmg Glimmer Eyeliner

Long-wearing formula. Retractable. Formulated without parabens, sulfates and talc. Available in Diamond, Cream or Waterproof. .01 oz. net wt. reg. \$9

**NOW \$2.99**

#### DIAMOND



#### CREAM



#### WATERPROOF



### fmg Glimmer Brow Definer

Long-wearing formula with castor and coconut oils. Smudge-, transfer-, sweat- and waterproof. Retractable. Formulated without parabens, sulfates and talc. .01 oz. net wt. reg. \$9

**NOW \$2.99**



### fmg Glimmer Lipliner

Long-wearing creamy formula with vitamin E. Prevents feathering. Matte finish. Retractable. Formulated without parabens, sulfates and talc. .01 oz. net wt. reg. \$9

**NOW \$2.99**



shop. sale. splurge.  
all makeup  
up to 65% off

### fmg Glimmer Liquid Color Eyeliner Pen

Felt-tip applicator glides on smoothly, with precise application. Highly pigmented, lightweight formula. Smudge-, transfer- and sweat-proof.\* Formulated without parabens, talc, mineral oil, phthalates and fragrance. .04 fl. oz. reg. \$13

**NOW \$7.49**

\*Based on Consumer Home Use Test Study of 62 applicants.



### fmg Glimmer Liquid Eyeliner

Quick-drying, long-lasting formula. Transfer-, sweat- and waterproof. Matte finish. Formulated without parabens, phthalates and fragrance. .037 fl. oz. **Blackest Black 354-380** reg. \$13

**NOW \$7.49**

### fmg Glimmer Always On Point Eyeliner

Built-in sharpener. Smudge- and waterproof. Formulated without parabens, sulfates and talc. .01 oz. net wt. **Black 016-389** reg. \$10

**NOW \$5.99**

### MICRO TIP

creates realistic hair-like strokes

### MATTE FINISH

buildable, long-wearing, creamy, yet firm formula

### SPOOLIE

blends and grooms for a natural look



**NEW**

**fmg Glimmer Fine Line Brow Pencil** Sweat- and smudgeproof, yet easy to remove.\*\* Retractable. Great for touch-ups! Vegan. Formulated without parabens, talc, sulfates, fragrance and mineral oil. .0032 oz. net wt. reg. \$10

**\$6.99**



\*\*Based on Consumer HUT Study of 22 applicants.







**fmg Colors of LOVE  
Hi-Brow Tinted Brow Gel**  
24-hour water-resistant formula with heart-shaped fibers, clay and vitamin E. Won't clump, smudge or flake. Formulated without parabens, phthalates and fragrance. .11 fl. oz. reg. \$19

**NOW \$10.99**



**fmg Cashmere  
Eyelash Primer**  
Nourishing formula with biotin and collagen amino acids helps to keep lashes looking healthy and strong. Maximizes the performance of any mascara for gorgeous, lush lashes. Formulated without parabens, sulfates and talc. .35 fl. oz. **324-369** reg. \$24

**NOW \$13.99**



**fmg Cashmere  
Ultimate Volume Mascara**  
Volumizing formula with biotin and a vegan alternative to collagen helps to keep lashes looking healthy and strong. Glossy black finish. Formulated without parabens, sulfates and talc. .27 fl. oz. **Rich Black 153-736** reg. \$24

**NOW \$13.99**



**fmg Colors of LOVE  
Hi-Brow Sculpting Brow Gel**  
Clear formula with aloe and hyaluronic acid. Flake-proof. Formulated without parabens, phthalates and fragrance. .11 fl. oz. **536-695** reg. \$19

**NOW \$10.99**



**fmg Glimmer  
SuperShock  
Volumizing Mascara**  
Lash-building formula with plumping fibers. High-gloss finish. Won't clump, smudge or flake. Formulated without phthalates and fragrance. .338 fl. oz. **Black 698-829** reg. \$13

**NOW \$7.99**



**fmg LOVE at 1st Lash  
Waterproof Mascara**  
Lash-loving, waterproof formula with volumizing and lengthening fibers. With Lashrez, olive oil and vitamin E. Won't clump, smudge or flake. Formulated without parabens and sulfates. .29 fl. oz. **Blackest Black 480-953** reg. \$19

**NOW \$10.99**



**fmg LOVE at 1st Lash  
Mascara**  
Lash-loving volumizing and lengthening fibers. With lycopene, olive oil and vitamin E. Won't clump, smudge or flake. Formulated without parabens and sulfates. .3 fl. oz. **Blackest Black 698-670** reg. \$19

**NOW \$10.99**



**fmg Glimmer  
SuperExtend  
Nourishing Mascara**  
Long-wearing lengthening formula with vitamin E, argan and coconut oils. Won't clump, smudge or flake. Formulated without sulfates and talc. .237 fl. oz. **Black 698-848** **Brown Black 698-852** reg. \$13

**NOW \$7.99**



**fmg Glimmer  
Wash-Off  
Waterproof Mascara**  
Waterproof volume. Washes off easily with soap and water. Formulated without phthalates, fibers and fragrance. .21 oz. net wt. **Black 535-560** reg. \$13

**NOW \$6.99**





shop. sale. splurge.  
all makeup  
**up to 65% off**

Featured shade: fmg Match Tint Radiant Tinted Moisturizer in Medium-Deep and Dust Finishing Powder in Medium-Deep.



**fmg Match Tint Radiant Tinted Moisturizer**  
Brightens skin tone, boosts moisture and blurs flaws. With passion fruit, chia and sunflower seed oils, and vitamin E and provitamin B5. Buildable coverage. Radiant finish. Formulated without parabens. 1 fl. oz. reg. \$19  
**NOW \$10.99**

Medium Deep 368-416   Tan Deep 368-420   Deep 368-454



**fmg Match Prime Face Perfector**  
Flaw-blurring mattifying oil-free formula visibly minimizes pores and fine lines. Sheer coverage. Matte finish. Formulated without parabens. 1 fl. oz. 103-744 reg. \$19  
**NOW \$10.99**



# powder power

New & improved talc-free formulas.

**fmg Match Dust Finishing Powder**  
Loose powder helps to set makeup and perfect skin. Translucent formula with light-diffusing ingredients known to help blur the appearance of imperfections and silica to help control shine. Goes on smooth and provides a naturally radiant finish. Sheer to light coverage. Formulated without parabens, phthalates, sulfates, fragrance and talc. Vegan. .16 oz. net wt. reg. \$20  
**\$15.99**

Translucent Fair-Light 921-058   Translucent Medium-Deep 921-062

**fmg Match Set Finishing Powder**  
Loose powder blends effortlessly, creating an invisible veil that sets makeup for lasting wear. Translucent formula infused with light-diffusing ingredients known to help blur the appearance of imperfections and silica to help control shine. Goes on smooth and provides a soft matte finish. Formulated without parabens, phthalates, sulfates, fragrance and talc. Vegan. .16 oz. net wt. Invisible 750-975 reg. \$20  
**\$15.99**



## way to glow

Silky, liquid pearl formula with a soft-filter effect and hint of tint in sheer, flexible shades.

### fmg Match

**Airbrush Retouch Tinted Primer**  
Helps soothe and even skin tone and provides a lit-from-within dewy complexion. With skin-caring ferulic acid, panthenol (provitamin B5) and niacinamide. Formulated without parabens, phthalates, fragrance and talc. 1 fl. oz. reg. \$21

**NOW \$12.49**



Fair Light

Tan Deep

shop. sale. splurge. all makeup  
**up to 65% off**



### fmg Match Filter Serum Tint Foundation

Instantly hydrates, blurs flaws and evens tone. With hyaluronic acid, vitamin E and berry complex. Buildable coverage. Demi-matte finish. Formulated without talc, parabens and fragrance.

.31 oz. net wt. reg. \$21

**NOW \$12.49**



### fmg Match Wand Correcting Stick

Neutralizes unevenness, brightens and color corrects. Long-wearing formula with shea butter and vitamin E. Formulated without parabens, phthalates and sulfates.

.21 oz. net wt. reg. \$19

**NOW \$10.99**





shop. sale. splurge.  
all makeup  
up to 65% off



**fmg Cashmere  
Multi-Peptide Face Primer**

Preps skin. Revitalizing ingredients help to smooth the appearance of fine lines and pores and visibly plump and strengthen the skin barrier. Sheer gel formula with Matrixyl 3000 peptide blend, hyaluronic acid, collagen and niacinamide. Formulated without parabens, talc and fragrance.

1 fl. oz. **739-284** reg. \$24

**NOW \$13.99**



**fmg Cashmere  
Multi-Peptide Eyeshadow Primer**

Keeps eyeshadow in place and intensifies the color. Skin-loving ingredients help to reduce the appearance of fine lines and visibly plump and strengthen the skin barrier. Sheer formula with Matrixyl 3000 peptide blend, hyaluronic acid, collagen and panthenol. Formulated without parabens and talc. .31 oz. net wt. **906-385** reg. \$24

**NOW \$13.99**



**fmg Cashmere  
Under Eye Primer**

Helps diminish the look of dark circles and fine lines. With caffeine, green tea extract and a vegan alternative to collagen. Formulated without parabens, phthalates and fragrance. .317 oz. net wt. **010-429** reg. \$24

**NOW \$13.99**



**fmg Cashmere 24 Hour Foundation\***

24 hours of comfortable, breathable wear. Full, flexible coverage. Soft-focus matte finish. Visibly blurs pores and fine lines for a smoother complexion. With antioxidant botanical extracts. Water-resistant. Doe-foot applicator. Formulated without parabens, phthalates and sulfates. 1 fl. oz. reg. \$32

**NOW \$17.99**

|                               |                           |                            |                             |  |
|-------------------------------|---------------------------|----------------------------|-----------------------------|--|
|                               |                           |                            |                             |  |
| Cannoli<br>(W)<br>017-347     | Nougat<br>(W)<br>126-107  | Meringue<br>(W)<br>017-500 | Shortcake<br>(C)<br>018-970 | Buttercream<br>(N)<br>019-134                                      |
|                               |                           |                            |                             |  |
| Marshmallow<br>(N)<br>131-849 | Custard<br>(N)<br>019-172 | Strudel<br>(C)<br>019-225  | Macadamia<br>(W)<br>019-450 | *Available in Cool (C),<br>Neutral (N) and Warm (W)<br>undertones. |



**fmg Cashmere Compact Powder Foundation\***

Shine-control formula can be used wet or dry. Buildable medium-to-full coverage. Matte finish. With antioxidant botanicals. Sponge applicator. Formulated without parabens, phthalates and sulfates. .40 oz. net wt. reg. \$36

**NOW \$22.49**

|                 |                 |                 |                 |                 |
|-----------------|-----------------|-----------------|-----------------|-----------------|
|                 |                 |                 |                 |                 |
| N110<br>722-976 | W110<br>111-294 | W120<br>723-040 | W130<br>723-073 | W140<br>723-130 |
|                 |                 |                 |                 |                 |
| W150<br>723-088 | N130<br>111-548 | N150<br>111-658 |                 |                 |



**fmg Cashmere Cream Concealer**

Long-wearing formula helps to camouflage dark circles, acne and uneven skin tone. With hyaluronic acid and collagen. Full-coverage. Matte finish. Formulated without parabens, phthalates, talc and fragrance. .21 oz. net wt. reg. \$17

**NOW \$9.49**

|                            |                          |                              |                               |                           |
|----------------------------|--------------------------|------------------------------|-------------------------------|---------------------------|
|                            |                          |                              |                               |                           |
| Fair<br>Neutral<br>359-028 | Light<br>Cool<br>359-396 | Medium<br>Neutral<br>359-434 | Medium Tan<br>Warm<br>359-640 | Tan<br>Neutral<br>359-931 |



shop. sale. splurge.  
all makeup  
**up to 65% off**



**fmg Glimmer Nail Lacquer**  
Nail-strengthening, long-wearing, no-chip formula. Gel-like cushion texture. Formulated without parabens and phthalates. .4 fl. oz. reg. \$12

**NOW \$6.99 each**



**LIMITED EDITION**  
**fmg Glimmer**  
**Glitz A-Peel Nail Lacquer**  
Glittery quick-dry formula. No harsh acetone or remover needed. Glossy finish. Formulated without parabens, toluene, formaldehyde and camphor. .4 fl. oz. reg. \$13

**NOW \$7.49**



just "peels" off  
for fuss-free  
removal.



**fmg Glimmer**  
**Nourished Nail Cuticle Oil**  
Nourishing treatment for dry, damaged cuticles. Fortified with safflower oil to help restore and condition nails and cuticles. Formulated without phthalates, sulfates, parabens, toluene, formaldehyde and camphor. .4 fl. oz. 612-894 reg. \$14

**NOW \$7.99**



**fmg Glimmer**  
**Nail Base & Top Coat**  
Two-in-one base and top coat primes and shields nails. Glossy finish. Formulated without parabens and phthalates. .4 fl. oz. 018-161 reg. \$12

**NOW \$6.99**



**fmg Glimmer**  
**Nail Air Dry Drops**  
Need a fast finish? Accelerate your dry time with just a drop or two! Helps prevent smudges and nicks. Formulated without phthalates, sulfates, parabens, toluene, formaldehyde and camphor. .4 fl. oz. 612-913 reg. \$14

**NOW \$7.99**



**fmg Glimmer**  
**Nail Lacquer Eraser Pen**  
For a clean and perfected mani. Won't dry out nails or cuticles. Formulated without parabens and phthalates. .135 fl. oz. 704-443 reg. \$12

**NOW \$6.99**





**fmg Complexion Blending Brush**

Dual-ended: Rounded buffing foundation brush and concealer brush. 6½" L. Synthetic bristles. 933-210 reg. \$24

**NOW \$13.99**

**fmg Precision Eye Brush**

Dual-ended: Pointed pencil brush and angled eyeliner brush. 5½" L. Synthetic bristles. 933-187 reg. \$17

**NOW \$9.49**

**fmg Eyeshadow Blending Brush**

Dual-ended: Crease brush and allover eyeshadow brush. 6" L. Synthetic bristles. 933-320 reg. \$17

**NOW \$9.49**

**fmg Blush & Contour Brush**

Dual-ended: Angled contour brush and tapered, oval blush brush. 7¼" L. Synthetic bristles. 933-259 reg. \$23

**NOW \$13.49**



shop. sale. splurge. all makeup  
up to 65% off



**fmg Oil Rewind Roller Ball**

Reusable 360° rotating volcanic-stone roller instantly absorbs oil and grease without disturbing makeup. 3" L x 1" W. Plastic handle, protective cap. Imported. 508-294 reg. \$19

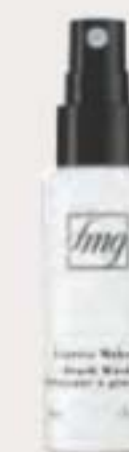
**NOW \$10.49**



**fmg Set & Fix Spray**

Controls oil and helps keep makeup smudge-proof. Non-greasy, non-sticky. Formulated without parabens, sulfates, phthalates and silicones. 1.7 fl. oz. 416-707 reg. \$15

**NOW \$7.99**



**fmg Express Makeup Brush Wash**

Easily removes dirt, oil and makeup. With aloe vera and green tea extract. Formulated without alcohol and sulfates. 1 fl. oz. 141-368 reg. \$15

**NOW \$8.99**



**fmg Flawless Complexion Sponge**

Dual-ended: Allover makeup application rounded end, and contouring and concealing flat end. 2½" L x 1½" W. 100% PU, latex-free. 140-160 reg. \$11

**NOW \$5.99**



**fmg Kabuki Brush**

Soft, angled brush for pressed or loose powder formulas. Retractable with protective cap. 3¼" L x 1" diam. Synthetic bristles. 732-370 reg. \$20

**NOW \$11.99**



**Daily Beauty Tools Tweezers**

Amp up your beauty routine with angled tweezers. Stainless steel. 3½" L. 747-020 reg. \$4

**NOW \$1.99**



**fmg Makeup Remover Wipes**

With vitamin E and aloe, chamomile, cucumber, marshmallow root and oat extracts. Resealable pack of 24 wipes. Formulated without parabens, gluten, sulfates, phthalates and fragrance. 333-867 reg. \$12

**NOW \$5.99**



**fmg Vanity Organizer**

Four compartments with two removable inside dividers, three outer pockets and lattice elastic straps. Folds for easy storage. 9½" L x 6" W x 5" H. Polyester. Imported. 022-816 reg. \$32

**NOW \$18.49**



**fmg Waterproof Lip & Eye Makeup Remover**

Dual-layer oil and water remover leaves skin fresh and clean. With ether, silicone, hydrocarbon and ester oils. Formulated without mineral oil, tar, talc and parabens. 3.7 fl. oz. 352-243 reg. \$12

**NOW \$5.99**



**fmg Moisturizing Eye Makeup Remover Lotion**

Cleans, refreshes and moisturizes as it whisks away eye makeup. Formulated without parabens, sulfates and phthalates. 2.5 fl. oz. 037-978 reg. \$8

**NOW \$4.49**



**fmg Unready Makeup Remover Cloth**

Dual-sided. Reusable and travel-friendly. 100% polyester. 9½" sq. Machine wash and dry. Imported. 230-176 reg. \$15

**NOW \$8.99**



# SKIN CARE

Healthy-looking, hydrated skin starts here. Address your skin care concerns with our high-performance treatments.

Isa Knox LXNEW Clean  
Nourishing Cream  
Cleanser

## FREE

WITH PURCHASE OF ANY 2  
ULTIMATE OR PLATINUM PRODUCTS,  
PAGES 30-33. \$15 VALUE.  
LIMITED QUANTITIES.  
Sold separately on page 56.







**Anew Ultimate Supreme  
Radiant Firming Cream**

A lightweight moisturizer perfect for daytime use. With panthenol, niacinamide and peptides to help boost hydration, visibly restore brightness and firm skin contours. With bakuchiol, an alternative to retinol, to visibly reduce wrinkles and discolorations without irritation. Clinically tested to improve skin texture and elasticity.

1.7 fl. oz. **835-052** reg. \$60

**\$41.99**



**Anew Ultimate Multi-Performance Eye System**

Visibly smooths crow's-feet and de-puffs under-eye bags. Cream, .5 oz. net wt. Elixir, .09 oz. net wt. **021-862** reg. \$42

**\$29.99**



**Anew Ultimate Night Repair Serum**

See improved tone and texture. With peptides, licorice, hyaluronic acid and niacinamide. Use PM before moisturizer.

1 fl. oz. **625-355** reg. \$45

**\$30.99**



**Anew Ultimate Supreme Eye Balm**

Moisturizing formula infused with squalane, sunflower seed oil and antioxidant vitamin E. Wear alone or under makeup.

0.1 oz. net wt. **625-340** reg. \$45

**\$30.99**



**Anew Ultimate Multi-Performance Night Cream**

It works while you sleep to revive and recreate the look of youthful skin. 1.7 oz. net wt.

**763-311** reg. \$42

**\$29.99**



**Anew Ultimate Supreme Dual Elixir**

With Black Pearl Extract and precious oils. See a dramatic difference in even advanced signs of aging. Serum/Oil, .67 fl. oz. each.

**963-925** reg. \$60

**\$41.99**



**Anew Ultimate Supreme  
Advanced Performance Crème**

With Black Pearl Extract. See a dramatic difference in deep wrinkles and skin radiance.

1.7 oz. net wt. **014-735** reg. \$60

**\$41.99**



**Anew Ultimate Multi-Performance  
Day Cream Broad Spectrum SPF 25**

See wrinkles fade and youthful vibrance return.

1.7 oz. net wt. **763-307** reg. \$42

**\$29.99**



defying gravity  
has never been easier



**Anew Platinum  
Firm and Sculpt Cream  
for Neck and Chest**

With Peptide Lifting Complex to treat the skin on your neck and chest, which is more vulnerable to wrinkles and sagging. Use PM after cleansing. 1.7 oz. net wt. 763-584 reg. \$42  
**\$29.99**

**Anew Platinum  
Night Cream**

Skin appears smoother overnight, resculpted over time. 1.7 oz. net wt. 753-439 reg. \$42  
**\$29.99**

**Anew Platinum  
Eye & Lip Cream**

Dual applicator. .5 oz. net wt. 902-614 reg. \$42  
**NOW \$22.49**

**Anew Platinum  
Day Cream  
Broad Spectrum SPF 25**

With Paxillium Technology to help defy gravity and Radiescent Microspheres to help visibly restore radiance. 1.7 oz. net wt. 184-146 reg. \$42  
**\$29.99**



**Anew Platinum Age Delay Serum**

With niacinamide, panthenol and peptide. Formulated to visibly boost elasticity for a firmer look. Use AM and PM before moisturizer. 1 fl. oz. 625-609 reg. \$45  
**NOW \$22.99**



**Anew Platinum Sculpting Sleep Mask**

An overnight mask that helps visibly lift, plump and nourish skin while you sleep. Formulated with skin-contouring ingredients, including tetrapeptide, panthenol, niacinamide and yeast extract. Clinically tested to improve skin texture and wrinkles in two weeks. 1.7 fl. oz. 835-033 reg. \$42  
**\$29.99**



**Anew Platinum  
Sculpting Body Serum**

With moisture-boosting niacinamide, panthenol (provitamin B5) and peptides. 6.7 fl. oz. 506-249 reg. \$45  
**NOW \$22.99**





## BROAD-SPECTRUM SUN PROTECTION

LEAVES NO  
VISIBLE  
WHITE CAST

PLUS...

**HYALURONIC ACID**  
helps skin feel plump  
and supple

**CERAMIDES** help  
protect the skin  
barrier

**CENTELLA ASIATICA**  
helps hydrate and  
soothe skin

**Beyond Glow Sun Milk SPF 50**  
With higher SPF. Blends  
seamlessly. Perfect for all skin  
tones. Formulated without  
fragrance. 1.7 fl. oz. 929-541  
reg. \$38  
**\$29.99**

**Beyond Glow Sun Moisturizer  
SPF 30**  
For face and body. Blends  
seamlessly. Perfect for all skin  
tones. Formulated without  
fragrance. 1.7 fl. oz.  
927-773 reg. \$38  
**\$29.99**

# sun care that doubles as skin care

NEW BEYOND GLOW SUNSCREENS



**SPF 50:**  
rich milky  
texture for  
extra care



**SPF 30:**  
lightweight  
texture for  
everyday wear

Best of  
K-Beauty





## Cleansers With Benefits



**Cleanse + Hydrate**  
For Dry Skin  
With Hyaluronic Acid & Niacinamide  
**Beyond Glow Hyaluronic Acid + Niacinamide Facial Cleanser**  
5 fl. oz. 627-821  
reg. \$15  
**\$11.99**



**Cleanse + Brighten**  
For Normal Skin  
With Vitamin C & AHA  
**Beyond Glow Vitamin C + AHA Facial Cleanser**  
5 fl. oz.  
628-450  
reg. \$15  
**\$11.99**



**Cleanse + Exfoliate**  
For Oily Skin  
With Salicylic & Citric Acids  
**Beyond Glow Salicylic + Citric Acids Facial Cleanser**  
5 fl. oz. 627-798  
reg. \$15  
**\$11.99**



fruit-infused  
cleansers

## Cleanse + Remove Makeup

For All Skin Types  
With Kiwi Extract,  
Vitamins B3, B9 and  
Provitamin B5

**Beyond Glow Gentle Foaming Cleanser with Vitamins and Kiwi**

A gentle foaming water-based cleanser that easily washes off makeup and residue without stripping your skin, leaving it feeling soft and smooth. Skin looks brighter and revitalized. 5 fl. oz. 575-760 reg. \$19

**\$14.99**

For All Skin Types  
With Mango Butter  
& Papaya Enzyme

**Beyond Glow Melting Balm Cleanser with Enzyme and Mango Butter**

Transforms into a silky oil when massaged onto skin. Add water for a creamy cleansing milk that rinses away makeup, residue and even visible blackheads and whiteheads, leaving your skin feeling soft, smooth and refreshed. 5 fl. oz. 575-865 reg. \$19

**\$14.99**

\*Based on a consumer-perception study of 33 people.





## in one use

relieves the look of redness caused by dryness<sup>†</sup>

### Beyond Glow Centella Redness Relief Serum

A soothing gel serum with centella asiatica, panthenol and glycerin to help relieve the appearance of redness. 1 fl. oz. 350-399 reg. \$34

**\$25.99**

Best of  
K-Beauty



BEFORE\*



AFTER

\*Subject's face exposed to heat for 20 minutes to induce skin irritation.

†Based on a consumer-perception study of 32 people.

\*\*Based on a consumer-perception study of 31 people.

††Based on a clinical study of 32 people.

## BEYOND GLOW

### CENTELLA COLLECTION

SKIN CARE



96%  
said skin  
feels  
instantly  
cooled\*\*

**Beyond Glow Centella Cooling Toner**  
Refreshes and moisturizes irritated skin caused by dryness in seconds. 6.7 fl. oz. 350-403 reg. \$25  
**\$19.99**

in 6 days  
skin barrier improved††

**Beyond Glow Centella Soothing Cream**  
Moisturizes and reduces the look of redness caused by dryness. Hypoallergenic and noncomedogenic. 2.7 fl. oz. 350-422 reg. \$34  
**\$25.99**



## Nourish

**Beyond Glow  
Lipcerin Intensive  
Nourishing  
Lip Care**  
reg. \$20  
**\$14.99**



Nourishing  
052-325

An intensive, glistening formula that nourishes dry lips with moisture. With a plumping peptide, moisture-enhancing glycerin and smoothing shea butter. Clear finish. .5 fl. oz.

## Plump

**Beyond Glow  
Lipcerin Plump  
and Cool Lip  
Care**  
reg. \$20  
**\$14.99**



Plump and Cool  
052-344

An intensely moisturizing, glistening formula that visibly plumps and softens lips. With cooling menthol for an instant visible increase in lip volume. Clear finish. .5 fl. oz.

## Tint

**Beyond Glow  
Lipcerin  
Hydrating Tinted  
Lip Care**  
reg. \$20  
**\$14.99**



Twinkle  
052-750



Flash  
052-909



Gleam  
053-097



Flare  
053-101



Splendor  
053-078



Smolder  
053-140

An intensely moisturizing, glistening formula that visibly softens lips and adds a glossy hint of color. With a plumping peptide, moisture-enhancing glycerin and smoothing shea butter. .5 fl. oz.



DAY SHIFT



NIGHT SHIFT

# shifting shades magic results

Presto change-o! Formula interacts with your lips' pH and transforms to your personalized shade of pink.



**Day Shift**  
Lemon/lime shade shifts to a warm pink on lips. 840-756



And it's like skin care for your lips because it has:

### ceramides

Help protect skin's moisture barrier to keep lips looking firm and smooth

### peptides

Amino acids that help boost youthful-looking plumpness

### glycerin

Helps enhance moisture

### shea butter

Helps soften and smooth dry lips

### superfruit extracts

With the antioxidant power of blueberry, amla and acai

## NEW

**Beyond Glow  
Lipcerin Color Shift  
Tinted Lip Care**  
reg. \$20

**\$14.99 each**

An intensive, glistening formula that nourishes dry lips with plumping peptide, moisturizing glycerin, smoothing shea butter and antioxidant-rich fruit extracts while it adapts to your lips for a customized shade. Each, .5 fl. oz.

**Night Shift**  
Black shade shifts to a cool pink on lips 840-760







### Beyond Glow Niacinamide 2% Cream Mist

Deliver an instant boost of hydration to your skin with this creamy, fast-absorbing spray-on serum that can be used under or over makeup for glowing skin anytime, anywhere. Infused with niacinamide.

3.3 fl. oz. **617-365** reg. \$34

**\$25.99**



### Beyond Glow Niacinamide 10% Neck Firming Cream

Nighttime hydrating neck and chest cream formulated with tried-and-true ingredients niacinamide, shea butter and squalane derived from olive oil, plus panthenol, which helps strengthen the skin barrier. Contains retinol. 3.3 fl. oz. **052-249** reg. \$38

**\$29.99**



### Beyond Glow Niacinamide 10% Eye Cream

Nighttime moisturizing eye cream formulated with tried-and-true ingredients niacinamide and caffeine, plus panthenol, which helps strengthen the skin barrier. Contains retinol.

1 fl. oz. **052-272** reg. \$30

**\$22.99**



## In just 4 weeks:

### Beyond Glow Niacinamide 10% Neck Firming Cream

- Crepey skin appears smoothed\*
- Neck and décolleté lines look improved\*

\*Based on a clinical study on 31 people.

### Beyond Glow Niacinamide 10% Eye Cream

- Crow's-feet appear reduced\*
- Helps under-eye bags look depuffed\*

\*Based on a clinical study on 30 people.

# Minimize the look of PORES

serum + cream  
together  
**3X**  
Reduction in the  
look of pores\*\*



### Beyond Glow Niacinamide 10% + Panthenol Serum

Helps improve even tone and elasticity. Niacinamide, also known as vitamin B3, helps even skin tone and replenish the skin barrier. Panthenol, also known as provitamin B5, helps lock in moisture. 1 fl. oz.

**255-612** reg. \$38

**\$29.99**

### Beyond Glow Niacinamide 10% All-in-One Cream

Nighttime facial cream that helps enhance your healthy-looking glow. All-in-one facial cream that visibly brightens skin, reduces fine lines and helps support the skin barrier. Contains retinol. 3.7 fl. oz.

**617-350** reg. \$38

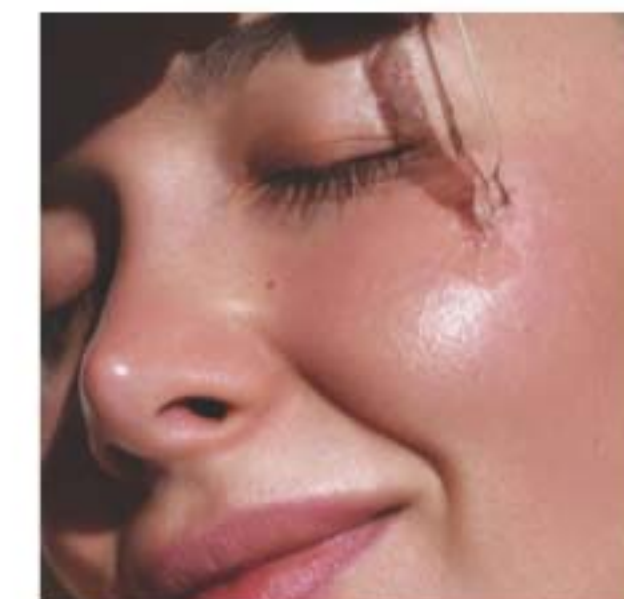
**\$29.99**

Serum + cream, when used together:  
Reduce the look of pores by

**44%<sup>++</sup>**

\*\*Versus using the serum alone, based on a clinical study.

\*\*In a 4-week clinical trial of 32 people.







**Beyond Glow**  
**Hyaluronic Acid 1.5% + Ferulic Acid Serum**

Hyaluronic acid, known as a "moisture magnet," helps infuse skin with instant and lasting hydration. Ferulic acid, a powerful antioxidant, helps defend skin from environmental stressors. 1 fl. oz. **255-593** reg. \$38

**NOW \$22.49**



**Beyond Glow**  
**Vitamin C 6% + Ferulic Acid Serum**

Vitamin C visibly improves radiance for glowing skin. Ferulic acid, a powerful antioxidant, helps protect skin from environmental stressors. 1 fl. oz. **255-589** reg. \$38

**\$29.99**

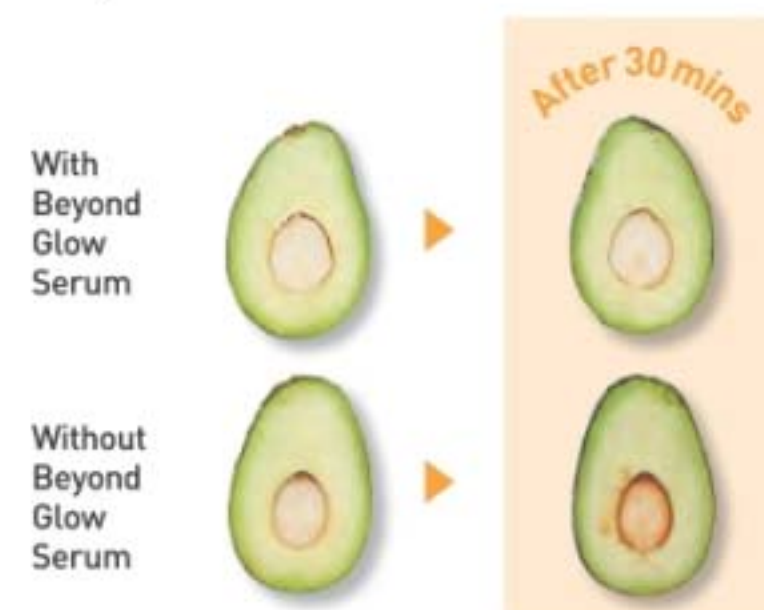
## Clinically tested to improve skin radiance in 3 days

**Q** What makes Beyond Glow Vitamin C serum so special?

**A** **125** HOUR **125-hour antioxidant effect\***

**4X** **4X stronger skin barrier in 2 weeks†**

Just look at the **antioxidant effect!**  
of Beyond Glow Vitamin C 6% + Ferulic Acid Serum



## Boosts absorption of vitamin C by **2X\*\***

Use with  
Vitamin C  
6% + Ferulic  
Acid Serum  
for optimal  
results.

**Beyond Glow**  
**Galvanic Booster Device**

Give your skin a spa treatment at home in three minutes. Red LED light helps tone the appearance of skin texture, enhances your radiant glow and visibly promotes skin health. On-the-go compact design. Automatically turns on and off. Uses two cell batteries (included). **255-627** reg. \$60

**\$49.99**

\*Evaluated by in vitro test. †Based on stripped skin instrumental study on 31 people. \*\*Evaluated by Dongduk Women's University Industry-Academia Cooperation [ex vivo test, DPPH, Oct. 13 to 24, 2023].

# The Trending Star Ingredient: SNAIL MUCIN Complex

Clinically tested to  
improve skin tone  
and brightness

**Beyond Glow Snail Mucin  
Complex + Panthenol Cream**  
Moisturizes while it visibly improves  
texture and elasticity. With snail mucin  
complex and panthenol, which helps lock  
in moisture. 3.7 fl. oz. **255-536** reg. \$36  
**\$27.99**

**Beyond Glow Snail Mucin Complex +  
Niacinamide Serum**  
Visibly brightens, moisturizes and  
retexturizes. With snail mucin complex and  
niacinamide, also known as vitamin B3,  
which helps even skin tone and strengthen  
the skin barrier. 3.3 fl. oz. **255-574** reg. \$36  
**\$27.99**

Our cream and serum, formulated with snail  
mucin complex, moisturize and help visibly  
brighten skin with a clear, cushiony yet  
fast-absorbing texture that disappears into  
the skin while plumping it up with hydration.



## Real Formulas, Real Results



"I'M GETTING SO MANY COMPLIMENTS ON MY BARE SKIN.  
I ALMOST DON'T WANT TO EVEN WEAR MAKEUP!"

"BEYOND GLOW IS A GAME CHANGER.  
I HAVE SEEN A SIGNIFICANT IMPROVEMENT IN MY SKIN."

The Ambassadors were gifted with the Beyond Glow Snail Mucin Cream, plus the four serums from the Beyond Glow regimen (pages 43-45), which they used with the Galvanic Booster Device, AM and PM, for two weeks.



# see firmer skin

## COLLAGEN BOOSTER

is formulated with **peptides, exfoliators** and **amino acids** that help stimulate skin renewal so it looks **firmer** and **smoother**

**Isa Knox Anew Clinical Collagen Booster Firming Cream**  
With peptides that boost skin renewal to help restore youthful bounce. With moisturizing and skin-plumping niacinamide and squalane. Hygienic, airless pump. 1.7 fl. oz. 069-327 reg. \$45  
**\$29.99 \$22.49**



**Isa Knox Anew Clinical Collagen Booster Eye Lift Pro Dual Eye System**  
In just 7 days, eye area looks lifted, firmer, tighter. With a peptide complex to help boost skin renewal.  
Gel, .33 fl. oz. Cream, .33 fl. oz.  
564-550 reg. \$40  
**\$24.99 18.49**



**Isa Knox Anew Clinical Collagen Booster Rejuvenating Serum Ampoules**  
Powerful peptide blend boosts skin renewal. 60 capsulated single-use ampoules. .008 fl. oz. each. 803-077 reg. \$66  
**\$54.99 \$40.99**



**Isa Knox Anew Clinical Collagen Booster Microneedling Polisher**  
At-home alternative to micro-dermabrasion and micro-needling. Visibly diminishes pores, fine lines and wrinkles. 1.7 fl. oz. 798-592 reg. \$34  
**\$20.99 \$15.49**



**9 OUT OF 10 WOMEN**  
showed improvement in  
the look of wrinkles...and  
it moisturizes, too.



**Isa Knox Anew Clinical  
Revitalize & Reveal  
Advanced Wrinkle Corrector**  
In just two weeks, wrinkles appear  
reduced. 1.7 fl. oz. **470-100**  
reg. \$40  
**\$29.99 \$22.49**



**Isa Knox Anew Clinical  
Revitalize & Reveal Resurfacing Lotion for Body**  
Exfoliates with gentle yet effective AHA lactic  
acid. Moisturizes with shea butter.  
5 fl. oz. **390-785** reg. \$34  
**\$20.99 \$15.49**



**Isa Knox Anew Clinical  
Revitalize & Reveal Intensive Peel**  
Intensive resurfacing peel similar to  
pro acid peels. With AHA and PHA.  
1 fl. oz. **780-025** reg. \$45  
**\$29.99 \$22.49**



**Isa Knox Anew Clinical Revitalize & Reveal  
Resurfacing Expert Smoothing Fluid**  
79% as effective as a pro micro-dermabrasion  
without the same irritation. 1 fl. oz.  
**852-282** reg. \$44  
**\$31.99 \$23.99**



**Isa Knox Anew Clinical  
Revitalize & Reveal  
Extra Strength Retexturizing Peel**  
Results similar to a 35% pro glycolic peel.\*  
50 fragrance-free pads, 2" diam. **632-774** reg. \$40  
**\$29.99 \$22.49**

\*In 6 out of  
8 attributes  
tested over a  
7-week period.



see more  
youthful skin

Dermatologists recommend  
retinol as the #1 wrinkle fighter



**Isa Knox Anew  
Clinical Line Eraser with Retinol  
Targeted Treatment**  
For targeted lines and wrinkles  
(expression lines) such as around  
forehead and mouth. .67 fl. oz.  
**925-159** reg. \$40  
**\$29.99 \$22.49**



**Isa Knox Anew Clinical  
Line Eraser  
with Retinol Treatment**  
Great for first-time retinol users.  
Use AM/PM. 1 oz. net wt.  
**763-330** reg. \$45  
**\$31.99 \$23.99**



**Isa Knox Anew Clinical  
Line Eraser with Retinol [1.0%]  
Advanced Retinol Serum**  
Our highest dose of retinol.  
Dramatically reduces the  
appearance of fine lines, wrinkles  
and dark spots. Use PM. 1 fl. oz.  
**390-751** reg. \$50  
**\$40.99 \$30.49**



### Anew Vitamin C Exfoliating Peel Pads

With PHA and pineapple extract, vitamin C, panthenol and glycerin. Exfoliates and helps visibly brighten. Formulated without alcohol and fragrance. 4.3 fl. oz. 70 pads. 169-143 reg. \$28

**\$22.99**



### Anew Vitamin C Antioxidant Lip Treatment

Nourishes lips with vitamins C and E. .13 oz. net wt. 784-547 reg. \$14.99

**\$9.99**



### Anew Vitamin C Brightening Eye Cream

Visibly reduces dark circles. Under-eye area looks brighter and more even-toned. .5 fl. oz. 953-602 reg. \$34

**\$23.99**



### Anew Vitamin C Brightening Serum

Skin is visibly energized and brightened with the power of 10% pure vitamin C. 1 fl. oz. 522-066 reg. \$44

**\$27.99**



### Anew Vitamin C Illuminating Priming Moisturizer

With skin-smoothing silicones. Use after Brightening Serum. Wear alone or under makeup. 1.7 fl. oz. 914-671 reg. \$34

**\$23.99**

## C Spot Go

Vitamin C is known as the go-to skin brightener. Now skin appears brighter in one week\* with a concentrated treatment formulated to target dark spots, discolorations and dullness.



**97%**  
agree

skin discolorations  
appear to fade†

\*In a clinical study.  
†In a 4-week, consumer-perception study.

### Anew Vitamin C Targeted Skin Brightener

With the triple-antioxidant power of 7% vitamin C, 2% ferulic acid and vitamin E, skin looks brighter and more even-toned with a dramatically improved appearance in overall skin clarity. With moisturizing allantoin and soothing aloe. Suitable for sensitive skin. .5 fl. oz. 169-177 reg. \$34

**\$23.99**



## EVERY BODY WANTS TO LOOK RADIANT

Vitamin C, plus other skin-nourishing ingredients, helps your skin look brighter and smoother all over.

**Anew Vitamin C Nourishing Body Butter**  
With hydrating shea butter and niacinamide, plus vitamins C and E to help restore radiance. Fruity-floral and citrus scent. 7.8 fl. oz. **443-767** reg. \$32  
**\$20.99**

**Anew Vitamin C Glow Body Scrub**  
Sugar-based formula with pineapple and papaya enzymes and coffee seed extract exfoliates dry, dull skin. Citrus scent. 9 oz. net wt. **443-752** reg. \$36  
**\$20.99**



**Isa Knox Anew Solaire Everyday Mineral Face Protection Cream Broad Spectrum SPF 50**  
Lightweight formula with zinc oxide. Suitable for sensitive skin. Water-resistant (40 minutes). 1.7 fl. oz. **911-467** reg. \$32  
**\$25.99**



**Isa Knox Anew Solaire Everyday Face Protection Lotion Broad Spectrum SPF 50**  
1.7 fl. oz. **911-400** reg. \$32  
**\$25.99**



**Isa Knox Anew Solaire Active Face & Body Protection Lotion Broad Spectrum SPF 50**  
2.7 fl. oz. **154-948** reg. \$38  
**\$29.99**



**Anew Vitamin C Dry Body Oil**  
Soothing sunflower seed and jojoba oils help keep skin feeling supple. 3.4 fl. oz. **074-432** reg. \$34  
**NOW \$14.99**



92% of women believe it dramatically improves skin's overall appearance.\*

**Anew Power Serum**  
Visibly improves wrinkles, radiance, firmness and texture. Use AM and PM after cleansing, before moisturizing. 1 fl. oz. **838-047** reg. \$45  
**\$29.99**

\*Based on those who expressed an opinion in a consumer-perception study.




**Anew Hydra Fusion  
De-Puffing  
Eye Serum**

With caffeine and hyaluronic acid. Cooling ceramic tip. Instantly boosts hydration around eye area by 3X. .5 fl. oz. **137-737** reg. \$34  
**\$22.99**

**Anew Hydra Fusion  
1.5% Hyaluronic  
Acid Serum**

With three different molecular sizes of HA that reach multiple layers of skin's surface to visibly plump skin. 1 fl. oz. **290-390** reg. \$44  
**\$25.99**

**Anew Hydra Fusion  
Cleansing  
Micellar Water**

No need to rinse off. 10.1 fl. oz. **139-380** reg. \$14  
**\$9.99**

**Anew Hydra Fusion  
Nighttime Facial  
Treatment**

Hyaluronic acid. Shea butter beads. Visibly re-plumps skin with 3X more moisture. Relaxing rose scent. 1.7 oz. net wt. **139-429** reg. \$34  
**\$22.99**

**Anew Hydra Fusion  
Gel Cream**

72 hours of long-lasting hydration. 1.7 oz. net wt. **266-893** reg. \$34  
**\$22.99**

**100%** agree:

skin looks  
smoother  
and softer\*

\*Based on a consumer-perception study.



For dry, irritated skin

**moisturizing bomb toner**  
A fast-absorbing, milky-textured toner clinically tested to increase skin's moisture levels in arid, dry conditions. 6.7 fl. oz. **929-207** reg. \$33  
**\$30**

For dryness, loss  
of elasticity and  
firmness



**moisturizing eye bomb**  
Lightweight, refreshing eye cream cools on contact. Helps keep eye area looking firm, resilient and smooth. .84 fl. oz. **021-915** reg. \$53  
**\$48**

For dryness,  
dullness and  
uneven texture



**The True Cream - Aqua Bomb**  
70% increase in hydration levels.\* 1.68 fl. oz. **556-207** reg. \$42  
**\$38**

\*Based on a clinical study.

For an extra boost  
of hydration



**aqua bomb hydrating toner**  
Water-based. With hyaluronic acid, honeysuckle flower extract and baobab tree seed extract. Use after cleansing, before serum and moisturizer. 6.7 fl. oz. **106-648** reg. \$33  
**\$30**

For dryness, loss  
of elasticity and  
firmness



**The True Cream - Moisturizing Bomb**  
26 hours of long-lasting moisture.\* 1.69 fl. oz. **079-252** reg. \$42  
**\$38**

\*Based on a clinical study.

For dryness,  
dullness and  
uneven texture



**aqua bomb jelly cleanser**  
Jelly to foam. Amino acids and glycerin-based cleansing agents gently cleanse. 5.41 fl. oz. **445-353** reg. \$35  
**\$30**

For dull, dry,  
fatigued skin



**aqua bomb sleeping mask**  
Unique jelly-pudding texture! Replenishes with explosive hydration for smoother skin and a healthy glow. 2.53 oz. net wt. **514-717** reg. \$42  
**\$38**





**NORMAL TO DRY SKIN**

**Isa Knox LXNEW Clean  
Nourishing Cream Cleanser**

Removes impurities and makeup while restoring moisture. 5 fl. oz. **717-990** reg. \$15

**NOW \$8.99**



**OILY TO NORMAL SKIN**

**Isa Knox LXNEW Clean  
Soothing Whipped Oil Cleanser**

Helps eliminate impurities and excess oil. 5 fl. oz. **718-025** reg. \$19

**\$14.99**



**NORMAL, DRY AND  
COMBINATION SKIN**

**Isa Knox LXNEW  
Clean Balancing Gel Cleanser**  
Gel to foam. Helps remove oil and impurities while rebalancing skin. 5 fl. oz. **718-010** reg. \$15

**NOW \$8.99**



**NORMAL, DRY,  
COMBINATION, OILY SKIN**

**Isa Knox LXNEW Clean 2-in-1  
Exfoliating Cleansing Balm**  
Melts away makeup and impurities. Spatula included. 3.5 oz. net wt. **718-006** reg. \$32

**NOW \$19.49**

#### Avon Solutions Banishing Serum

An intensive serum with ingredients known to help improve the appearance of dark spots and uneven skin tone. 1 fl. oz. **507-905** reg. \$18

**NOW \$10.49**

#### Avon Solutions Dramatic Firming Serum

This moisturizing serum contains effective anti-aging ingredients that help promote a more youthful appearance. 1 fl. oz. **507-871** reg. \$18

**NOW \$10.49**



**Avon Solutions Nurtura Serum**  
With skin-nourishing ingredients known to help combat dryness and flakiness, and help hydrate. 1 fl. oz. **507-924** reg. \$18

**NOW \$10.49**



#### Solutions Dramatic Firming Cream

Skin looks and feels smoother. 1.7 fl. oz. **374-657** reg. \$14

**NOW \$7.49**



#### Solutions Nurtura Replenishing Cream

Adds moisture to dry skin. 1.7 fl. oz. **908-263** reg. \$14

**\$10.99**



#### Solutions Banishing Cream Skin Discoloration Improver

Visibly improves skin tone. 1.7 fl. oz. **267-115** reg. \$14

**NOW \$7.49**



**Solutions  
Anti-Aging Cream**  
Moisturizing formula works to visibly smooth the appearance of fine lines and wrinkles. 1.7 fl. oz. **949-460** reg. \$14

**NOW \$7.49**





**Rice Water Bright  
Rice Bran  
Gentle Exfoliating  
Cleanser**  
Daily scrub with  
organic rice bran  
powder, rice bran oil  
and hydrated silica.  
10.1 fl. oz. **376-865**  
reg. \$19  
**NOW \$10.99**



**Rice Water Bright  
Facial Cleansing  
Lotion**  
Helps brighten skin.  
Gently removes  
makeup and  
impurities.  
6.7 fl. oz. **720-184**  
reg. \$14  
**\$10.99**



**Rice Water Bright  
Foaming Cleanser**  
Light whipped foam.  
With rice water and  
soapwort extract.  
Skin looks clear  
and bright.  
10.1 fl. oz. **508-093**  
reg. \$19  
**\$14.99**



**Rice Water Bright  
Mild Cleansing  
Water**  
Removes impurities  
via the micellar  
method, so no need  
to rinse off!  
16.9 fl. oz. **288-360**  
reg. \$18  
**NOW \$10.49**



**Smaller Size!  
Rice Water Bright  
Foaming Cleanser**  
Light whipped foam.  
With rice water and  
soapwort extract.  
Convenient size for  
your medicine cabinet.  
5 fl. oz. **478-479**  
reg. \$13  
**\$9.99**



**Rice Water Bright  
Light Facial  
Cleansing Oil**  
With jojoba oil  
and rice water  
extract, known to  
visibly brighten and  
moisturize skin.  
5 fl. oz. **720-199**  
reg. \$20  
**\$15.99**



**Rice Water Bright  
Cleansing  
Facial Wipes**  
Great on the go.  
With rice extract to  
moisturize while  
cleansing. Removes  
eye makeup.  
50 sheets. **508-108**  
reg. \$13  
**\$9.99**



**Rice Water Bright  
Facial Massage  
Cream**  
With rice water,  
vitamins A, B  
and E, ceramide  
and minerals. After  
cleansing, massage  
into skin 2-3 times  
a week. 6.7 fl. oz.  
**450-200** reg. \$25  
**NOW \$14.99**

**Best of  
K-Beauty**

A

B

C

**Calendula  
Essential Moisture**  
Daily skin care for irritated  
and sensitive skin. With  
moisturizing calendula  
extract, a soothing herb  
complex, and the ultimate  
hydrator, hyaluronic acid.

**A. Serum**  
A moisturizing and  
soothing serum that  
helps calm skin  
and enhance hydration.  
1.35 fl. oz. **746-263**  
reg. \$15  
**NOW \$8.99**

**B. Eye Cream**  
A lightweight, non-  
greasy, moisturizing  
and soothing eye  
cream.  
.67 fl. oz. **966-245**  
reg. \$14  
**\$10.99**

**C. Cream**  
A moisturizing cream  
that instantly hydrates  
while it gently helps  
soothe dry, itchy,  
irritated skin. 1.69 fl. oz.  
**966-101** reg. \$15  
**NOW \$8.99**



# FRAGRANCE

From alluring eau de parfums to spirited colognes, fresh florals to woody notes, each scent in our collection lets you express yourself.

elegant yet wild

**NEW**

fresh citrus

**LYRD  
Clementine &  
Poppy**

Eau de Parfum  
1.7 fl. oz. 922-384  
reg. \$45

**\$35**

Top: Fresh Air  
Accord, Blood  
Orange, Clementine,  
Bergamot, Black  
Currant

Mid: Guava, Poppy  
Flowers, Orange  
Blossom, Jasmine,  
Tuberose

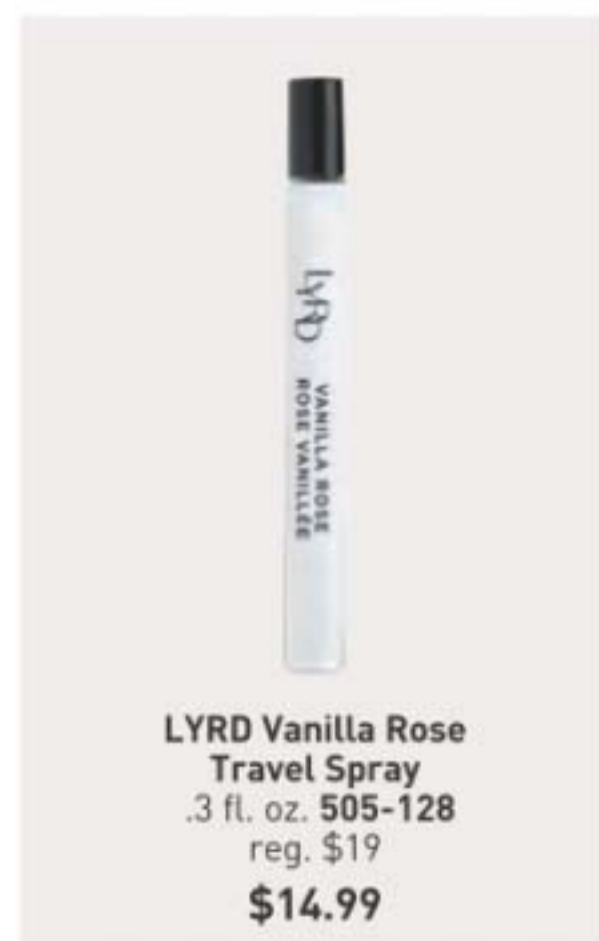
Base: Cashmere  
Woods, Sheer Musk







amber floral  
**LYRD Vanilla Rose**  
**Eau de Parfum**  
 Dewy roses, comforting  
 vanilla and cedarwood.  
 1.7 fl. oz. **094-020**  
 reg. \$42  
**\$35**



**LYRD Vanilla Rose**  
**Travel Spray**  
 .3 fl. oz. **505-128**  
 reg. \$19  
**\$14.99**



**LYRD Sultry Orchid**  
**Travel Spray**  
 .3 fl. oz. **612-799**  
 reg. \$19  
**NOW \$10.99**



amber floral  
**LYRD Sultry Orchid Eau de Parfum**  
 Pink saffron, red orchid and warm  
 amber. 1.7 fl. oz. **892-960** reg. \$42  
**\$35**



lush &  
 invigorating

**NEW**

fresh green floral  
**LYRD Pear Blossom & Bamboo**  
**Eau de Parfum**  
 1.7 fl. oz. **763-804**  
 reg. \$45  
**\$35**

Top: Lemon Zest, Lavender, Kumquat, Dewy Bamboo  
 Mid: Magnolia, Sweet Pear Blossom, Water Lily  
 Base: Cashmere Woods, White Amber, Skin Musk



# it's your time to bloom

soft floral

**LYRD Honeysuckle Blossom Eau de Parfum**  
Apple blossom, honeysuckle nectar and vanilla orchid. 1.7 fl. oz. **167-270** reg. \$34

**\$26**



## LYRD Honeysuckle Blossom Hair and Body Mist\*

Lightweight formula envelops you in a soft cocoon of scent with notes of apple blossom, honeysuckle nectar and vanilla orchid. Leaves hair with a subtle, healthy-looking shine. 3.25 fl. oz. **167-231** reg. \$19

**\$14.99**



## LYRD Peony Rosé Hair and Body Mist\*

Soft floral. Lightweight formula envelops you in a soft cocoon of scent with notes of peony petals, pink currant and sheer musk. Leaves hair with a subtle, healthy-looking shine. 3.25 fl. oz. **167-212** reg. \$19

**\$14.99**



fresh green floral

## LYRD Coastal Lotus Eau de Parfum

Sparkling mandarin, island gardenia and lotus flower. 1.7 fl. oz. **869-906** reg. \$42

**\$35**



**NEW**

## LIMITED EDITION

### ❖ LYRD Some Like It Hot Candle

Creamy coconut, juicy mandarin and warm vanilla. Gives 30 hours of burn time. 7 oz. net wt. 3 1/8" diam. x 3 1/2" H. Glass jar, soy-blend wax. Assembled in USA.

**746-450**

reg. \$25

**\$19.99**



**NEW**

## LIMITED EDITION

### ❖ LYRD Back From the Beach Candle

Orange blossom, water lily and musk. Gives 30 hours of burn time. 7 oz. net wt. 3 1/8" diam. x 3 1/2" H. Glass jar, soy-blend wax. Assembled in USA.

**747-035**

reg. \$25

**\$19.99**

Unique wooden wick design gives a clean, even burn.



**NEW**

## LIMITED EDITION

### ❖ LYRD Surf's Up, Bottoms Up Candle

Ripe banana, tropical rum and sweet whipped cream. Gives 30 hours of burn time. 7 oz. net wt. 3 1/8" diam. x 3 1/2" H. Glass jar, soy-blend wax. Assembled in USA.

**746-445** reg. \$25

**\$19.99**



## LIMITED EDITION

### ❖ LYRD Bonfire Wooden Wick Candle

Earthy oakmoss, salty beach wood and fiery amber. Gives 28 hours of burn time. 11 oz. net wt. 4 1/4" diam. x 3 1/8" H. Wooden wick, glass jar, soy-blend wax. Assembled in USA.

**765-625** reg. \$25

**\$19.99**



## IT'S YOUR LIFE, OWN IT.

Express yourself with an exciting, affirmative statement of pure confidence, fierce independence and vibrant energy.



amber floral

### Live Out Loud U Be U

Top: Nectarine, Cardamom, Marshmallow  
Mid: Sweet Fig, Coconut Praline, Jasmine  
Base: Whipped Vanilla, Creamy Woods, Musk

Body Cream 048-000  
Body Mist 047-114

fruity floral

### Live Out Loud Retro Sun

Top: Guava, Tropical Mango, Tangerine  
Mid: Plumeria, Orange Flower, Creamy Coconut  
Base: Rich Amber, Moss, Cedarwood

Body Cream 047-300  
Body Mist 047-076

fruity floral

### Live Out Loud Guilt Free

Top: Bergamot, Plum, Pink Dragon Fruit  
Mid: Muguet, Rose, Violet Leaf  
Base: Sandalwood, Vanilla, Creamy Musk

Body Cream 047-320  
Body Mist 047-100

**NEW**

### Live Out Loud Body Cream

Fluffy, whipped cream with hyaluronic acid moisturizes and nourishes, leaving skin soft, glowing and beautifully scented.

Each, 5 fl. oz. reg. \$21

**\$15.99 each**

**NEW**

### Live Out Loud Body Mist

Lightweight, refreshing mist absorbs quickly and leaves skin feeling soft, supple and beautifully scented.

Each, 3.4 fl. oz. reg. \$22

**\$16.99 each**







fruity floral

**Live Out Loud #4U**  
Eau de Parfum  
Mandarin, peach blossom  
and vanilla. 1.7 fl. oz.  
735-968 reg. \$40  
**\$30**



fruity floral

**Live Out Loud**  
Eau de Parfum  
Strawberry, mimosa and  
vanilla. 1.7 fl. oz. 142-000  
reg. \$40  
**NOW \$22.49**



fruity floral

**Live Out Loud Solar Vibes**  
Eau de Parfum  
Bergamot, coconut water and  
fluffy marshmallow. 1.7 fl. oz.  
835-822 reg. \$40  
**\$30**

love begins with you



soft floral

**Today Eau de Parfum**  
Magnolia blossoms, hibiscus petals  
and silk musk. 1.7 fl. oz. 490-855  
reg. \$40  
**\$30**

Best of  
K-Beauty

amber floral

**Avon Moments**  
**Out On A Limb**  
Eau de Toilette  
Spicy cardamom,  
honeyed mimosa  
flower and powdery  
vanilla. 1.7 fl. oz.  
196-112 reg. \$36  
**\$27.99**

amber floral

**Avon Moments**  
**Remember That Night**  
Eau de Toilette  
Sparkling grapefruit,  
opulent jasmine  
and amber. 1.7 fl. oz.  
196-662 reg. \$36  
**\$27.99**

fruity floral

**Avon Moments**  
**Day Dreamer**  
Eau de Toilette  
Quince, dewy iris and  
cedarwood. 1.7 fl. oz.  
196-772 reg. \$36  
**\$27.99**



**Avon Moments**  
**Out On A Limb Body Wash**  
7.7 fl. oz. 196-442  
reg. \$19  
**\$14.99**



**Avon Moments**  
**Remember That Night Body Wash**  
7.7 fl. oz. 196-768  
reg. \$19  
**\$14.99**



**Avon Moments**  
**Day Dreamer Body Wash**  
7.7 fl. oz. 196-844  
reg. \$19  
**\$14.99**





fruity floral

**Far Away Bali Eau de Parfum**  
Grapefruit, salted tuberose and  
amber. 1.7 fl. oz. **451-389**  
reg. \$30  
**\$22.99**



amber floral

**Far Away Eau de Parfum**  
Freesia, jasmine and amber.  
1.7 fl. oz. **685-712**  
reg. \$30  
**\$22.99**



fruity floral

**Far Away Infinity Eau de Parfum**  
Bergamot, jasmine sambac and  
sandalwood. 1.7 fl. oz. **888-301**  
reg. \$30  
**\$22.99**



amber floral

**Far Away Gold Eau de Parfum**  
Ylang-ylang, jasmine and vanilla.  
1.7 fl. oz. **888-297**  
reg. \$30  
**\$22.99**

amber floral

**Far Away Moroccan Nights  
Eau de Parfum**  
Spicy floral notes dance in  
a Moroccan dream. 1.7 fl. oz.  
**612-655** reg. \$30  
**\$22.99**

Top: Violet Leaf, Powdery  
Orris, Heliotrope  
Mid: Blooming Moroccan  
Mimosa, White Tonka,  
Cardamom, Orange Flower  
Base: Creamy Cashmere  
Woods, Musk, Sandalwood

## The Allure Of Moroccan Nights



illuminate your life

fresh green floral

**Haiku**  
**Eau de Parfum**  
Japanese yuzu, delicate  
muguet and blonde woods.  
1.7 fl. oz. **521-170**  
reg. \$30  
**\$22.99**

woody floral

**Haiku Sunrise Eau de Parfum**  
1.7 fl. oz. **091-500** reg. \$30  
**\$22.99**

Top: Wild Fig, Watermelon,  
Madagascar Black Pepper  
Mid: Fresh Coconut Water,  
Sweet Rhubarb, Marine Accord  
Base: Warm Cedarwood,  
Cashmere Wood, Amber



fresh green floral

**Haiku Kyoto Flower**  
**Eau de Parfum**  
Violet leaf, white peony and cotton  
musk. 1.7 fl. oz. **144-352** reg. \$30  
**\$22.99**



fresh green floral

**Haiku Reflection Eau de Parfum**  
Water accord, acacia blossom and  
amber wood. 1.7 fl. oz. **617-657**  
reg. \$30  
**\$22.99**







woody floral

**Imari Amor Eau de Parfum**  
Black currant, orris and warm musk.  
1.7 fl. oz. 762-573 reg. \$30  
**\$22.99**



amber floral

**Imari Seduction Eau de Toilette**  
Wild berries, purple orchid and patchouli.  
1.7 fl. oz. 452-897 reg. \$30  
**\$22.99**

embrace your desire

amber floral

**Imari Eau de Toilette**  
Bergamot, jasmine and  
amber. 1.7 fl. oz. 871-496  
reg. \$30  
**\$22.99**



amber floral

**Rare Gold Eau de Parfum**  
Mandarin zest, ylang-ylang  
and amber. 1.7 fl. oz.  
933-115 reg. \$32  
**\$24.99**



soft floral

**Rare Pearls Eau de Parfum**  
Magnolia, white pepper and rosewood.  
1.7 fl. oz. 761-615 reg. \$32  
**\$24.99**



fruity floral

**Rare Amethyst Eau de Parfum**  
Plum, violet and sandalwood.  
1.7 fl. oz. 933-062 reg. \$32  
**\$24.99**



## layering essentials

**Far Away  
Body Scrub  
& Wash**  
6.7 fl. oz.  
143-360  
reg. \$15  
**NOW  
\$7.99**



**Far Away  
Hair and Body  
Mist**  
3.25 fl. oz.  
572-536  
reg. \$18  
**NOW \$10.99**



**Far Away  
Body Lotion**  
6.7 fl. oz.  
082-881  
reg. \$14  
**NOW \$6.99**



**Haiku Hair and Body Mist**  
3.25 fl. oz. 572-574  
reg. \$18  
**NOW \$10.99**



**Haiku  
Hand Cream**  
2.5 fl. oz. 364-808 reg. \$9  
**\$6.99**



**Rare Pearls  
Hand Cream**  
2.5 fl. oz.  
364-827  
reg. \$9  
**\$6.99**



**Far Away  
Hand Cream**  
2.5 fl. oz.  
364-850  
reg. \$9  
**\$6.99**



**Rare Pearls  
Body Lotion**  
6.7 fl. oz.  
082-915  
reg. \$14  
**\$10.99**



**Rare Pearls  
Hair and Body  
Mist**  
3.25 fl. oz.  
572-851  
reg. \$18  
**NOW  
\$10.99**



**Haiku Body Lotion**  
6.7 fl. oz. 447-820  
reg. \$14  
**NOW \$7.99**



**Haiku  
Body Scrub  
& Wash**  
6.7 fl. oz.  
143-208  
reg. \$15  
**NOW  
\$7.99**





BACK BY  
POPULAR  
DEMAND!

soft floral

**Avon Classics Soft Musk Cologne**  
Peach blossom, blonde woods and  
sheer musk. 1.7 fl. oz. **787-790**  
reg. \$20  
**\$15.99**



soft floral

**Avon Classics  
Dreamlife Cologne**  
Mimosa flower, rose and amber.  
1.7 fl. oz. **236-227** reg. \$20  
**\$15.99**



woody floral

**Avon Classics  
Night Magic Cologne**  
Neroli, jasmine and musk.  
1.7 fl. oz. **439-495** reg. \$20  
**\$15.99**

## scented softness

**Perfumed Skin Softener**  
Moisturizing formula leaves skin soft and  
scented. Each, 5 fl. oz. reg. \$7  
**\$4.99 each**

Avon Classics Candid 739-160  
Avon Classics Odyssey 739-762  
Imari 738-751  
Haiku 738-694

Avon Classics Timeless 739-155  
Avon Classics Sweet Honesty 740-246  
Avon Classics Night Magic 738-766  
For Away 049-246



amber floral

**Avon Classics Candid Cologne**  
Bergamot, tuberose and  
patchouli. 1.7 fl. oz. **038-295**  
reg. \$20  
**NOW \$9.99**



soft floral

**Avon Classics Odyssey Cologne**  
Tuberose, ylang-ylang and  
oakmoss. 1.7 fl. oz. **900-391**  
reg. \$20  
**\$15.99**



soft floral

**Avon Classics  
Sweet Honesty Cologne**  
Lily of the valley, rose and cedarwood.  
1.7 fl. oz. **901-861** reg. \$20  
**\$15.99**



soft floral

**Avon Classics Timeless Cologne**  
Cardamom, jasmine and  
patchouli. 1.7 fl. oz. **037-930**  
reg. \$20  
**\$15.99**



soft floral

**Avon Classics Topaze Cologne**  
Jasmine, rose and sheer musk.  
1.7 fl. oz. **735-217**  
reg. \$20  
**\$15.99**



fresh green floral

**Free O<sub>2</sub> Eau de Toilette**  
White peach tea, honeysuckle  
and musk. 1.7 fl. oz. **490-840**  
reg. \$20  
**\$15.99**



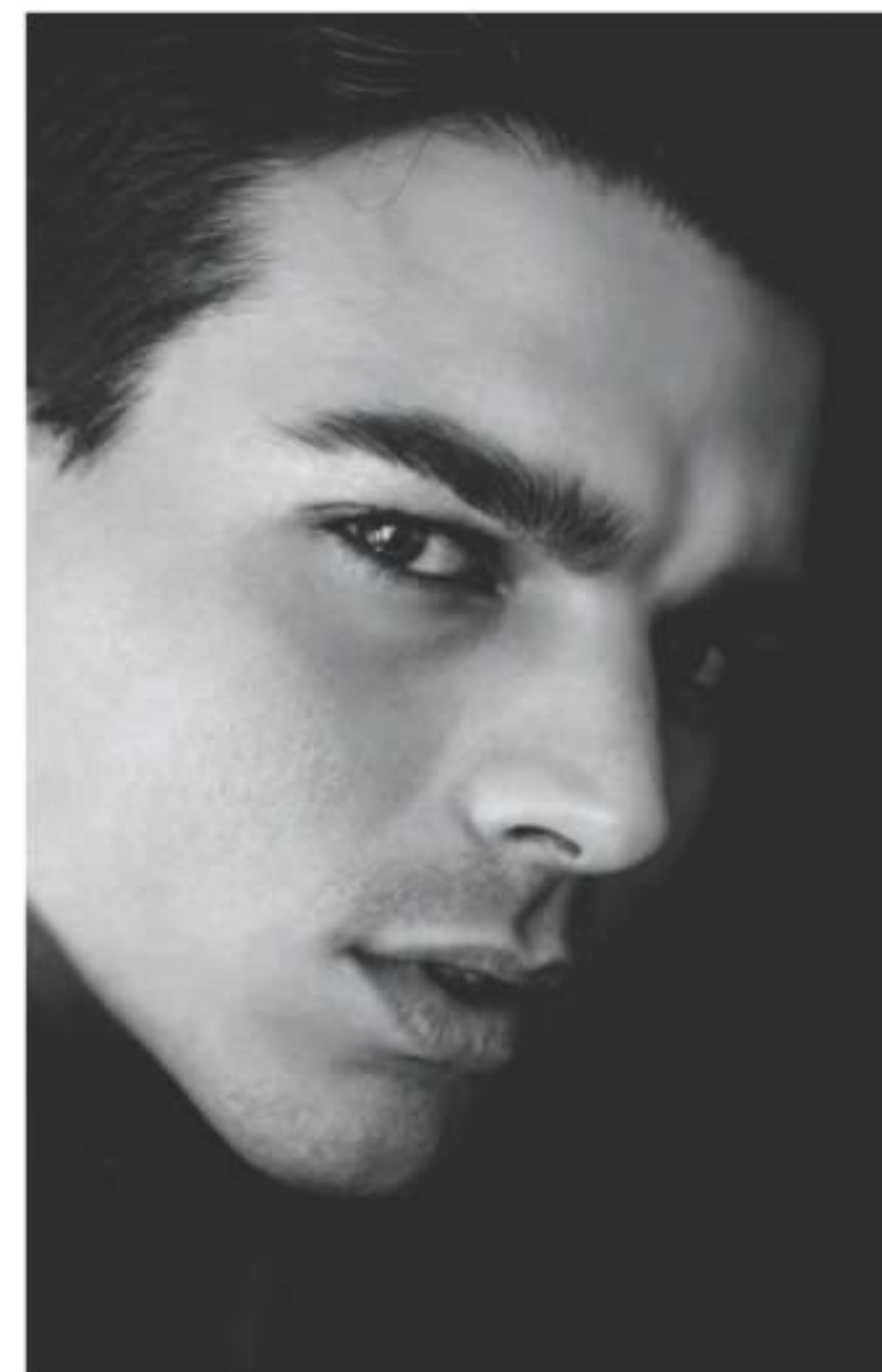


let your senses be your guide



fresh aromatic  
**Perceive Cologne**  
 3.4 fl. oz. 888-062 reg. \$32  
**\$24.99 \$18.49**

Top: Mandarin, Grapefruit, Sparkling Citrus  
 Mid: Geranium, Earthy Sage, Lavender  
 Base: Calming Cedarwood, Patchouli, Amber



fresh aromatic  
**Mesmerize Cologne**  
 Bergamot, cardamom and amber.  
 3.4 fl. oz. 871-458 reg. \$32  
**\$24.99 \$18.49**

captivate at a  
 single glance



woody fougère  
**Mesmerize Black Eau de Toilette**  
 Pepper, nutmeg and tonka bean.  
 3.4 fl. oz. 305-667 reg. \$32  
**\$24.99 \$18.49**





**Wild Country  
Hair & Body Wash**  
5 fl. oz. 215-188  
reg. \$9  
**\$6.99**



**Wild Country  
Aftershave Splash**  
4 fl. oz. 366-432  
reg. \$16  
**\$12.99**

**fresh aromatic**

**Wild Country Cologne**  
Lavender, coriander seed  
and sandalwood. 3 fl. oz.  
086-466 reg. \$25

**\$19.99**

Packaging may vary.



**cause a stir**

**woody fougère**

**Black Suede  
The Blend  
Eau de Toilette**  
Aged rum-soaked casks,  
smoky leather and spicy  
woods

3.4 fl. oz.  
433-865 reg. \$30  
**\$22.99**



**fresh aromatic**

**Black Suede Eau de Toilette**  
Bergamot, leather and oakmoss.  
3.4 fl. oz. 908-703 reg. \$25

**\$19.99**



**Black Suede  
Hair & Body Wash**  
5 fl. oz. 230-200  
reg. \$9  
**\$6.99**



# BATH & BODY

Pamper yourself from head to toe. We keep your body and hair looking healthy so you'll love your locks and have the confidence to show more skin.

## NEW Skin So Soft + RADIANT RENEW with Retinol

Retinol formulas enhanced with antioxidants and other high-performance ingredients leave your skin looking and feeling softer, smoother and rejuvenated.

### RETINOL

Known to help visibly even tone, brighten the complexion, smooth wrinkles and improve skin texture.

### BISABOLOL

An antioxidant known to help soothe skin and help it look firmer.



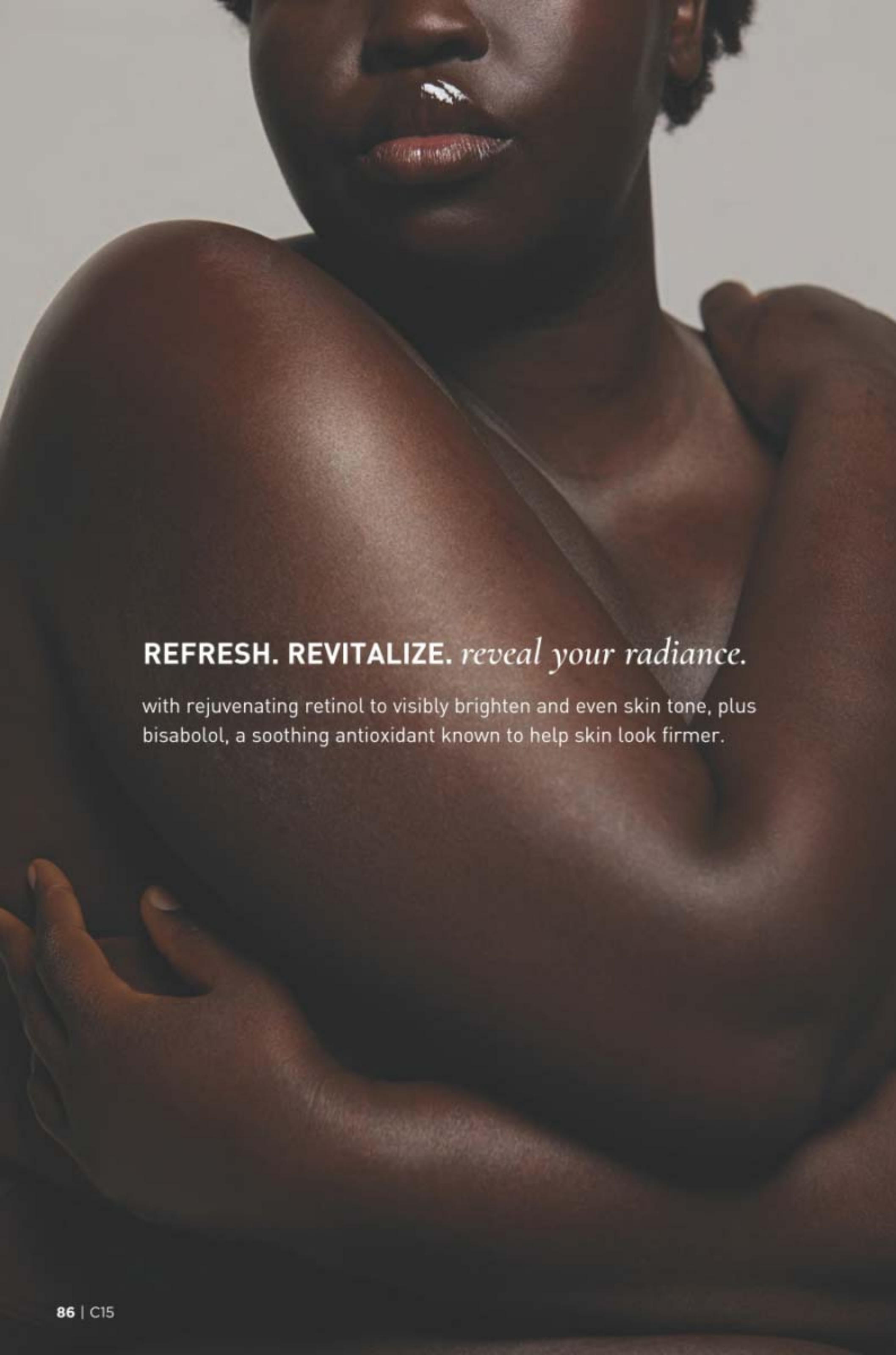
### **Bath & Body Oil**

48-hour hydration! With squalane to help boost moisture. Skin looks soft and smooth with a radiant glow. Apply during or after your bath or shower. Lightly fragranced. 11.8 fl. oz. 051-955 reg. \$38

**\$29.99**

**+ FREE BRUSH** details, page 88





**REFRESH. REVITALIZE.** *reveal your radiance.*

with rejuvenating retinol to visibly brighten and even skin tone, plus bisabolol, a soothing antioxidant known to help skin look firmer.

**NEW Skin So Soft +  
RADIANT RENEW** with Retinol



**Shower Gel**

Infused with argan oil, an abundant source of fatty acids, antioxidants and vitamin E. Skin looks softer, smoother and more radiant. Lightly fragranced. 8 fl. oz. **051-458** reg. \$23

**\$17.99**

**Body Lotion**

48-hour moisturization! With hydrating hyaluronic acid to help skin appear plump, supple and more radiant. Lightly fragranced. 11.8 fl. oz. **051-974** reg. \$26

**\$20.99**

**both for  
\$30**

**\$49 value**  
867-334

**+FREE BRUSH**

details, page 88



# THE BEAUTY OF *Jojoba Oil*

This plant extract mimics skin's natural oils, with vitamins and minerals essential to keep skin soft and smooth.

**Original Gelled Body Oil**  
Dries to a silky finish.  
6.76 fl. oz. **939-500**  
reg. \$16  
**\$12.99**

**Original Bath Oil Spray**  
Locks in hydration.  
5 fl. oz. **441-692**  
reg. \$19  
**\$13.99**

**Original Bonus-Size Bath Oil**  
Use during or after bath  
or shower. 24.6 fl. oz. **663-480**  
reg. \$35  
**\$26.99**



**Original Body Lotion**  
48 hours of moisture.  
11.8 fl. oz. **761-634**  
reg. \$17  
**\$12.99**

**Original Bonus-Size Body Lotion**  
33.8 fl. oz. **825-351**  
reg. \$26  
**\$17.99**

**Original Bonus-Size Shower Gel**  
Cleanses and hydrates.  
33.8 fl. oz. **433-444**  
reg. \$19  
**\$14.99**

**Original Shower Gel**  
5 fl. oz. **914-580**  
reg. \$9  
**\$5.99**

**Original Bath Oil**  
Fresh herbal scent.  
16.9 fl. oz. **439-040**  
reg. \$25  
**\$19.99**



**Original Replenishing Hand Cream**  
3.4 fl. oz. **776-633** reg. \$8  
**NOW \$4.49**

**Original Beauty Bar Soap**  
3.17 oz. net wt. **543-110** reg. \$5  
**\$3.99**



**FREE**  
**SHOWER BRUSH**  
WITH ANY  
\$30 SKIN SO SOFT  
PURCHASE,  
PAGES 85-97.  
\$11 VALUE.  
Limited quantities.  
Sold separately on page 118.



# THE BEAUTY OF *Argan Oil*

So precious, it's called "liquid gold."

Packed with vitamin E, it helps to visibly restore skin's luster and keep it irresistibly soft.



**Gelled Body Oil**  
Dries to a silky finish.  
6.76 fl. oz. 908-244  
reg. \$16  
**\$12.99**

**Bonus-Size Bath Oil**  
Hydrates during or  
after bath or shower.  
25 fl. oz. 862-920  
reg. \$35  
**\$26.99**



## SOFT & SENSUAL

**Shower Gel**  
5 fl. oz. 914-710 reg. \$9  
**\$5.99**

**Bath Oil**  
Spicy floral scent.  
16.9 fl. oz. 504-614 reg. \$25  
**\$19.99**

**Bonus-Size Shower Gel**  
33.8 fl. oz. 018-142 reg. \$19  
**\$14.99**

**Body Lotion**  
11.8 fl. oz. 400-720 reg. \$17  
**\$12.99**

**Replenishing Hand Cream**  
3.4 fl. oz. 779-924 reg. \$8  
**NOW \$4.49**

**Bonus-Size Body Lotion**  
33.8 fl. oz. 825-643 reg. \$26  
**\$17.99**

**Beauty Bar Soap**  
3.17 oz. net wt. 543-215 reg. \$5  
**\$3.99**





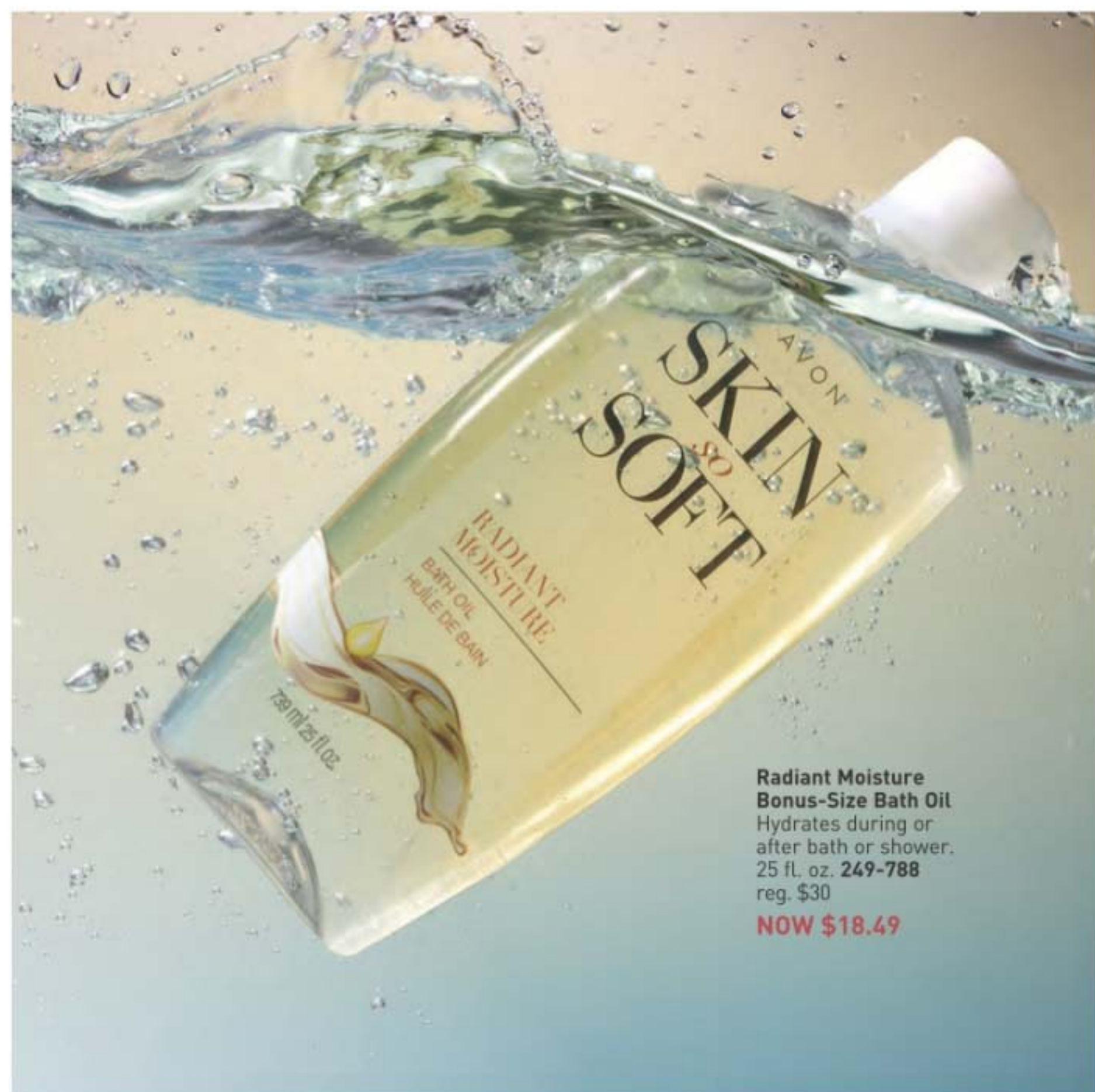
**Radiant Moisture  
Bonus-Size  
Shower Gel**  
33.8 fl. oz.  
433-922  
reg. \$19  
**NOW \$10.99**



**Radiant Moisture  
Bonus-Size  
Body Lotion**  
48 hours of moisture.  
33.8 fl. oz.  
620-956  
reg. \$26  
**NOW \$13.49**



**Botanical Essence  
Bath Oil**  
With nourishing  
botanical extracts.  
Uplifting herbal scent.  
16.2 fl. oz.  
027-253 reg. \$32  
**NOW \$18.49**



**Radiant Moisture  
Bonus-Size Bath Oil**  
Hydrates during or  
after bath or shower.  
25 fl. oz. 249-788  
reg. \$30  
**NOW \$18.49**

**Radiant Moisture  
Replenishing  
Hand Cream**  
3.4 fl. oz. 776-561  
reg. \$8  
**NOW \$4.49**



**Comforting Shea  
Bath Oil**  
With shea butter  
and oil. Vanilla,  
sandalwood and  
musk scent. 16.9 fl. oz.  
015-071  
reg. \$24  
**NOW \$13.49**



**Radiant Moisture  
Shower Gel**  
Gently cleanses  
and hydrates.  
5 fl. oz. 410-914  
reg. \$9  
**NOW \$4.49**



**Supreme Nourishment  
Enriching Coconut Oil  
Milk Lotion**  
Leaves skin feeling  
silky soft. 11.8 fl. oz.  
419-835  
reg. \$17  
**NOW \$9.49**





**SKIN SO SOFT PURE NATURE BODY COLLECTION**

Sustainable\* packaging  
Eucalyptus mint scent

**Revitalizing Body Cream**

Use after bath or shower.

12 fl. oz. **629-767**

reg. \$22

**\$16.99**

**Revitalizing Shower Gel**

Richly lathering gel.

12 fl. oz. **415-170**

reg. \$22

**\$16.99**

**Revitalizing In-Shower Body Lotion**

Apply onto wet skin after

shower or bath.

8 fl. oz. **633-857**

reg. \$22

**\$16.99**

\*Shower Gel and Body Cream bottles: 95% post-consumer recycled material, excluding cap. Body Lotion tube: 55% post-consumer recycled material, excluding cap.

**SKIN SO SOFT PURE NATURE HAIR COLLECTION**

Sustainable\* packaging  
Eucalyptus mint scent

**Nourishing Shampoo**

With moisturizing panthenol and citric acid, known to help balance the scalp's pH.

12 fl. oz. **290-074**

reg. \$23

**\$17.99**

**Nourishing Conditioner**

With panthenol. Hair looks smooth, healthy and shiny.

12 fl. oz. **290-089**

reg. \$23

**\$17.99**

**Intense Nourishing Hair Mask**

Panthenol-infused. Hair looks smoother and stronger.

8 fl. oz. **290-131**

reg. \$23

**\$17.99**

\*Shampoo and Conditioner bottles: 95% post-consumer recycled material, excluding cap. Hair Mask tube: 55% post-consumer recycled material, excluding cap.



# ooh la lavender



\*Body Lotion contains jasmine essential oil.  
Body & Bath Oil and Sugar Scrub contain jasmine extract.

**SKIN SO SOFT CALMING LAVENDER**

Infused with a superior blend of **lavender** and **chamomile** essential oils, plus **jasmine\*** oil and **extract**, for soft, smooth skin with a healthy-looking glow. **Calming lavender** scent.

**Body & Bath Oil**

Antioxidant-infused with a luxe blend of lavender and chamomile essential oils, plus jasmine extract. Skin feels so soft and supple.

11.8 fl. oz. **511-354**

reg. \$32

**\$24.99**

**Sugar Scrub**

Exfoliating scrub enhanced with a relaxing blend of essential oils and soothing allantoin. Skin looks and feels moisturized and smooth.

9 oz. net wt. **512-418**

reg. \$20

**\$15.99**

**Body Lotion**

With sunflower seed oil to help skin feel soft and smooth, rosehip seed oil and shea butter to lock in moisture, plus hydrating hyaluronic acid and soothing aloe. Contains antioxidant-rich resveratrol, known to help skin look youthful. 24-hour moisturization.

11.8 fl. oz. **511-995** reg. \$22

**\$16.99**



**Fresh & Smooth  
Meadowfoam  
Facial Hair  
Removal Cream**  
Dermatologically  
tested. 1 fl. oz.  
**562-543**  
reg. \$13  
**\$9.99**



**Fresh & Smooth  
Body Hair  
Removal Cream**  
4.2 fl. oz.  
**562-467**  
reg. \$10  
**\$7.99**



**Acne-Prone Skin  
Foaming Cleanser**  
5 fl. oz.  
**041-647**  
reg. \$17  
**NOW \$9.49**



## facial bar soaps

With Skin So Soft signature oils  
and other active anti-aging ingredients.

**Best of  
K-Beauty**



**Skin So Soft Facial Bar  
Hyaluronic Acid<sup>†</sup> &  
Niacinamide<sup>†</sup>**  
Enriches skin  
with moisture.  
3.1 oz. net wt.  
**364-573** reg. \$6  
**\$4.99**

**Skin So Soft Facial Bar  
Salicylic<sup>\*\*</sup> & Lactic<sup>\*\*</sup> Acids**  
Gently exfoliates to  
help skin look softer  
and luxuriously smooth.  
3.1 oz. net wt.  
**364-569** reg. \$6  
**\$4.99**

**Skin So Soft Facial Bar  
Retinol<sup>\*\*</sup> & Vitamin C<sup>†</sup>**  
Helps visibly even tone,  
brighten and enhance  
skin clarity.  
3.1 oz. net wt.  
**364-607** reg. \$6  
**\$4.99**

**Skin So Soft Facial Bar  
Collagen<sup>\*\*</sup> & Goat Milk<sup>\*\*\*</sup>**  
Deeply hydrates.  
3.1 oz. net wt.  
**364-626** reg. \$6  
**\$4.99**

<sup>†</sup>0.001% <sup>\*\*</sup>0.0009% <sup>††</sup>0.0001% <sup>\*\*\*</sup>0.007%

**Acne-Prone Skin  
Soothing Gel**  
6.1 fl. oz.  
**040-636**  
reg. \$20  
**NOW \$11.99**



**Acne-Prone Skin  
Exfoliating  
Body Wash**  
10.1 fl. oz.  
**041-556**  
reg. \$20  
**NOW \$11.99**



## Skin So Soft for ACNE-PRONE SKIN

Developed for all skin types  
with gently exfoliating salicylic  
acid. Suitable for daily use.  
Without synthetic fragrances.





**Moisture Therapy  
Bonus-Size Body Lotion**  
Each, 33.8 fl. oz. reg. \$25  
**\$19.99 each**

**Intensive Healing & Repair  
Bonus-Size Body Lotion**  
72-hour moisture for extra-dry  
skin. Fragrance-free. **639-745**

**Daily Skin Defense  
Bonus-Size Body Lotion**  
Helps restore moisture to  
everyday dry skin. **725-793**

**Calming Relief  
Bonus-Size Body Lotion**  
Soothes and relieves dry,  
itchy skin. Fragrance-free.  
**639-802**



**Moisture Therapy  
Intensive Healing & Repair  
Extra Strength Cream**  
24-hour moisturization.  
Fragrance-free.  
5.3 oz. net wt.  
**224-982**  
reg. \$9  
**\$6.99**



**Moisture Therapy  
Intensive Healing & Repair  
Hand Cream**  
For extremely dry skin.  
Moisturizes through hand  
washings. Fragrance-free.  
4.2 fl. oz. **845-982**  
reg. \$8  
**\$5.99**



**Moisture Therapy  
Balance + Soothe  
Body Wash**  
Softens as it  
gently cleanses.  
13.2 fl. oz.  
**438-078**  
reg. \$23  
**NOW \$13.49**



**Moisture Therapy  
Balance + Soothe  
Body Lotion**  
Skin looks softer  
and healthier.  
13.2 fl. oz.  
**438-082**  
reg. \$25  
**NOW \$14.99**



## rescue extra-dry skin

**Moisture Therapy  
Intensive Healing & Repair  
All Over Rescue Balm Stick**  
24-hour moisturization in a  
convenient, mess-free, glide-on  
stick. Fragrance-free. Apply  
anywhere on body, face and  
even lips. Great on the go.  
.63 oz. net wt. **470-004**  
reg. \$18  
**\$13.99**



**Moisture Therapy  
Intensive Healing & Repair  
All Over Rescue Balm**  
24-hour moisturization for extra-dry skin.  
With soothing and smoothing avocado oil  
and shea butter. Apply anywhere on body,  
face and even lips to seal in moisture and  
keep skin looking healthy. Fragrance-free.  
2.5 fl. oz. **419-840**  
reg. \$15  
**\$11.99**



**NEW****Senses****Aquatic Breeze**

Inhale the fresh and cool, invigorating ocean breeze with an energizing blend of mandarin zest, bergamot peel, lotus flower and driftwood.

**Bubble Bath**

Up to 24 pampering baths in every bottle.  
24 fl. oz.

**746-388**

reg. \$16

**\$12.99**

**Body Scrub**

With apricot-seed powder. 8.5 oz. net wt.

**746-426**

reg. \$24

**\$18.99**

**NEW****Senses****Sun-kissed Coconut**

Escape to the tropics with a creamy, sun-soaked splash of coconut water, a whiff of warm vanilla, a dash of dreamy jasmine, ylang-ylang and a sprinkle of sea salt.

**Bubble Bath**

Up to 24 pampering baths in every bottle.  
24 fl. oz.

**746-369**

reg. \$16

**\$12.99**

**Body Scrub**

With apricot-seed powder. 8.5 oz. net wt.

**746-407**

reg. \$24

**\$18.99**

**NEW****Senses****Caramel Sol**

Indulge in a day at the beach under the Mediterranean sun with rich and decadent notes of velvety caramel infused with warm golden rays of vanilla, a sweet sip of almond and coconut milk, and a zesty mandarin twist.

**Bubble Bath**

Up to 24 pampering baths in every bottle.  
24 fl. oz.

**746-373**

reg. \$16

**\$12.99**

**Body Scrub**

With apricot-seed powder. 8.5 oz. net wt.

**746-411**

reg. \$24

**\$18.99**

**NEW****Senses****Strawberry Sunset**

Sail away to a Caribbean summer night with a sweet and refreshing blend of luscious strawberries kissed by the warmth of the setting sun, a hint of pink magnolia and crushed mint.

**Bubble Bath**

Up to 24 pampering baths in every bottle.  
24 fl. oz.

**746-354**

reg. \$16

**\$12.99**

**Body Scrub**

With apricot-seed powder. 8.5 oz. net wt.

**746-392**

reg. \$24

**\$18.99**



## invigorate the senses

Cleanse and condition skin all over with your favorite refreshing scents.

**Senses Shower Gel**  
**Blushing Cherry Blossom**  
Flirty & feminine.  
5 fl. oz. **921-847**  
reg. \$8  
**\$5.99**

**Senses Shower Gel Juicy**  
**Pomegranate & Mango**  
Juicy & sweet.  
5 fl. oz. **248-155**  
reg. \$8  
**\$5.99**

**Senses Shower Gel**  
**Fresh Cucumber & Melon**  
5 fl. oz. **400-716**  
reg. \$8  
**\$5.99**



**Senses Shower Gel**  
**Silky Vanilla**  
5 fl. oz. **248-140**  
reg. \$8  
**\$5.99**



**Senses Lip Balm**  
**Strawberry 554-219**  
**Cherry 554-223**  
Each, .14 oz. net wt.  
reg. \$3.50  
**\$2.49 each**



## soak away stress

**Senses Bubble Bath**  
24 baths in every bottle.  
Each, 24 fl. oz.  
reg. \$16  
**\$12.99**



Cherry Blossom  
929-211



Vanilla Cream  
875-669



Cucumber Melon  
688-950



Sensitive Skin  
875-400



Orange & Honeysuckle  
633-952



Endless Ocean  
809-075

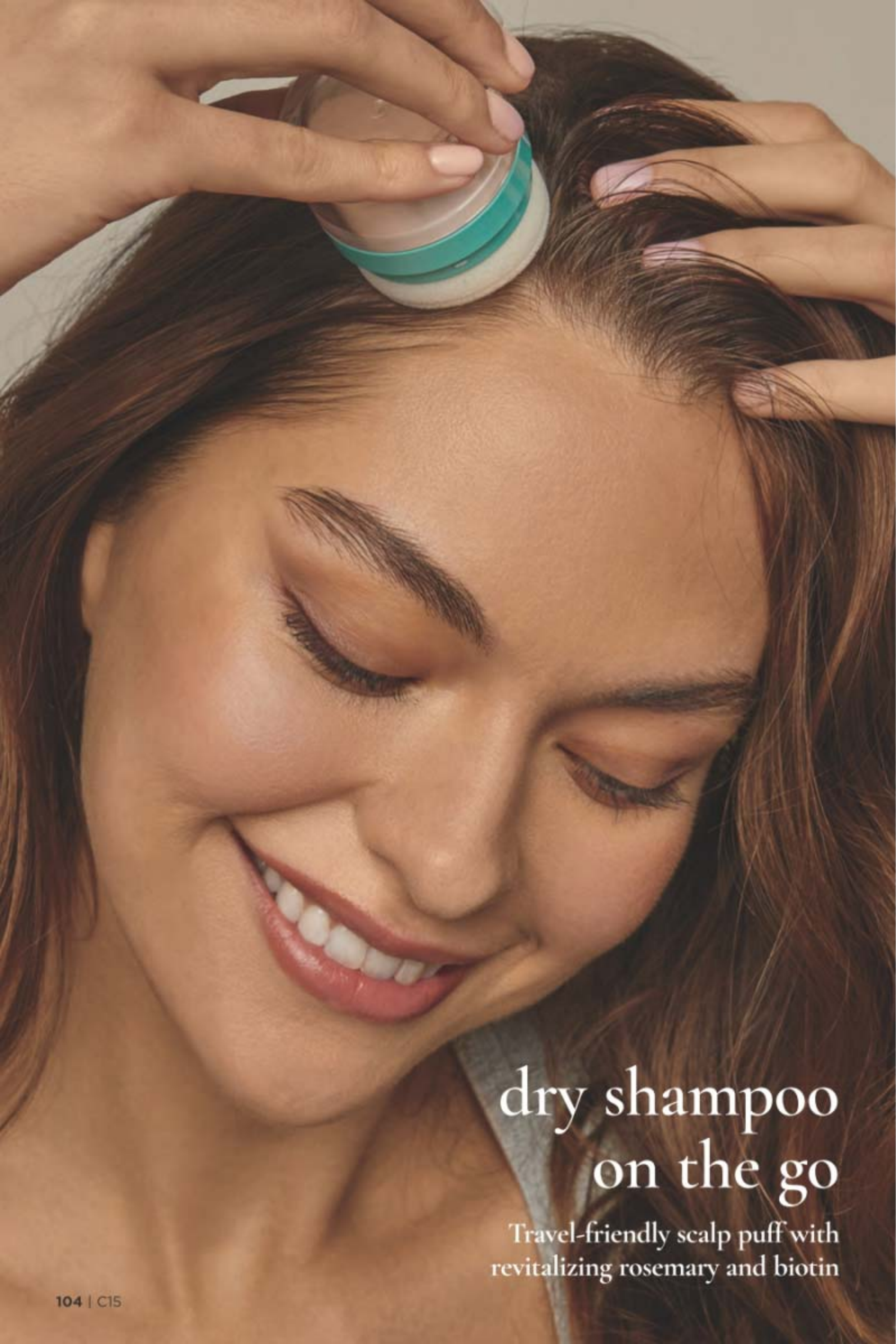


Lily & Honeysuckle Blossom  
805-524



Lavender Garden  
381-799





## dry shampoo on the go

Travel-friendly scalp puff with  
revitalizing rosemary and biotin

**NEW**

### Organist Rosemary Mint with Biotin Dry Shampoo Puff

Easy-to-use, mess-free puff applicator  
and fast-acting formula with a revitalizing  
blend of rosemary mint and biotin absorbs  
excess oil on scalp and at the roots so hair  
looks clean and fresh between washes.

Perfect on the go! Formulated without  
sulfates and parabens. 0.28 fl. oz.

078-787 reg. \$25

**\$19.99**



BEFORE



AFTER



Images are simulations for illustrative purposes only.  
Individual results may vary.



puff with  
strengthening oil

**both for  
\$29.99**

180-891

Rosemary Mint  
Hair Strengthening Oil  
sold separately  
on page 107



puff with  
shampoo

**both for  
\$27.99**

180-910

Rosemary Mint  
Strengthening Shampoo  
sold separately  
on page 106



## Organist Rosemary + Mint | *strengthening*

- helps hydrate and revitalize the scalp so it feels refreshed, and helps support a thicker-, fuller-looking mane of hair
- rich in antioxidants to support healthy-looking hair and scalp

healthy-looking hair starts at the scalp

### CLEANSE

**Rosemary Mint Strengthening Shampoo**  
With rosemary and biotin, helps keep scalp and hair looking healthy. Refreshing, cooling peppermint helps scalp feel revitalized. 16.9 fl. oz. **542-974** reg. \$22  
**\$16.99**

### CONDITION

**Rosemary Mint Strengthening Conditioner**  
With rosemary and biotin, helps keep scalp and hair looking healthy. Refreshing, cooling peppermint helps scalp feel revitalized. 16.9 fl. oz. **542-993** reg. \$22  
**\$16.99**

### THICKEN

**Rosemary Mint Scalp Strengthening Tonic**  
With rosemary, mint, biotin and caffeine. Scalp feels nourished and revitalized with a cooling sensation. Hair looks fuller, thicker, stronger. 5 fl. oz. **544-427** reg. \$25  
**\$19.99**



**96%**  
SAID THEIR  
HAIR FEELS  
STRENGTHENED\*

nourishing  
with rosemary oil

thickening  
with biotin

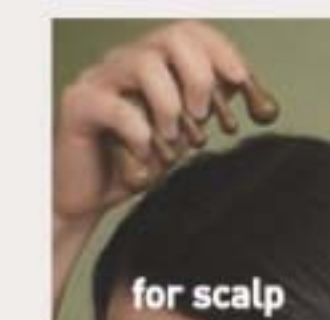
cleansing  
with mint

visibly strengthen hair from the roots

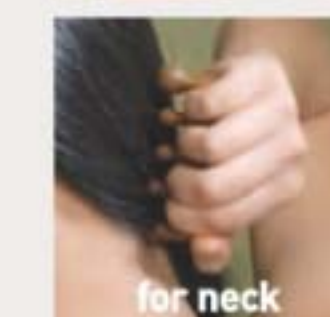
**Rosemary Mint Hair Strengthening Oil**  
2-in-1 daily-use oil for hair and scalp. With essential oils, 99% derived from plants, plus biotin. Rosemary and mint blend. Hair feels fortified, nourished and refreshed. 2 fl. oz. **542-845** reg. \$25  
**\$19.99**

### FOR HAIR & BODY

**Gua Sha Scalp Massager**  
For scalp, neck and body. Helps improve circulation for visibly strong, healthy hair. 100% wood. **542-960** reg. \$25  
**\$19.99**



for scalp



for neck

strengthen your body's  
moisture barrier

**Rosemary Mint Body Wash**  
Invigorate your senses. Formulated with AHA/BHA/PHA and panthenol. 16.9 fl. oz. **544-446** reg. \$22  
**\$16.99**





## Organist Rice Water | *nourishing*

- a time-honored Asian beauty secret
- rich in amino acids, vitamins B and E and minerals
- helps reduce breakage and split ends to smooth hair and improve shine and manageability



add moisture to dry, damaged hair for a healthy-looking shine

### CLEANSE

**Damage Care Shampoo**  
With biotin, ceramide, protein and 17 amino acids to deeply nourish each strand, restoring strength and resilience. Enriching rice water helps transform dry hair into a silky mane. 16.9 fl. oz. 381-803 reg. \$22  
**\$16.99**

### TREAT

**Damage Care Treatment**  
Perfect for hair in need of hydration and repair. Biotin, protein and 17 amino acids help nourish each strand from within. Hyaluronic acid and collagen help smooth hair for resilience and softness. 6.7 fl. oz. 381-860 reg. \$22  
**\$16.99**



jasmine  
and  
freesia  
scent

Nourishing  
Oil Layer

Hydrating  
Essence Layer



BEFORE



AFTER

nourish + hydrate  
hair with an uplifting  
fragrance mist

**Moisture Replenish Hair Mist**  
Two-layer mist: a hydrating essence plus five plant oils, including jojoba and argan oils, for deep moisturization. Rice water, biotin, ceramide, protein and amino acids help revitalize, nourish and soften dry, damaged hair. Shake well before use. Use on damp or dry hair. Fresh floral scent. 2.7 fl. oz. 381-985 reg. \$25  
**\$19.99**

Images show results using Organist Rice Water Moisture Replenish Hair Mist as directed. Mist was applied multiple times on dry hair. Minimal styling for consistency. Results may vary.

### FOR BODY

With **antioxidants** ideal for helping to moisturize dry skin

#### CLEANSE

**Nourishing Body Wash**  
With soap derived from olive oil. Contains panthenol and hyaluronic acid. Helps skin appear soft and moisturized. 16.9 fl. oz. 382-097 reg. \$19  
**\$14.99**

#### NOURISH

**Nourishing Body Milk**  
With plant-derived moisturizer and plant-derived oil (squalane) to help hydrate and nourish dry skin. Easily absorbed. Nongreasy. 10 fl. oz. 382-336 reg. \$19  
**\$14.99**





**Apple Cider Vinegar Scalp Tonic**  
 Leave-on scalp tonic with a blend of 10 natural herbs. Helps dissolve oily buildup and revitalizes scalp.  
 5 fl. oz. **482-721**  
 reg. \$24  
**\$18.99**



**Apple Cider Vinegar Clarifying Water Treatment**  
 Rinse-out treatment infused with collagen and hyaluronic acid. Formulated to clarify hair and help it look naturally soft instantly with a healthy shine.  
 6 fl. oz. **482-717**  
 reg. \$19  
**\$14.99**



**Clarifying Shampoo**  
 For oily hair. Helps clarify and nourish scalp and hair for healthy-looking shine as it cleanses. 16.9 fl. oz.  
**482-650**  
 reg. \$22  
**\$16.99**

**Clarifying Conditioner**  
 For oily, dull hair. Helps clarify and nourish scalp and hair for a healthy-looking shine. 16.9 fl. oz.  
**482-664**  
 reg. \$22  
**\$16.99**



## Organist Apple Cider Vinegar | *clarifying*

Crafted from a curated selection of natural ingredients, including exfoliating apple cider vinegar extract, detoxifying ginger, cooling menthol and enriching biotin. Formulated without silicone oil or sulfates.

### APPLE CIDER VINEGAR FOR BODY

#### Body Wash

For normal to oily skin. It blends apple cider vinegar extract with panthenol so skin feels refreshed and nourished. 16.9 fl. oz.  
**482-740** reg. \$19  
**\$14.99**

#### Exfoliating Body Scrub

With panthenol and AHA/BHA/PHA, it gently exfoliates dead skin cells to help skin look and feel refreshed all over. 6.7 fl. oz.  
**482-846** reg. \$19  
**\$14.99**







# Organist

everyday beauty  
inspired by nature

## Organist Botanical Castile Soap

Daily vegan washes for your face and body. Infused with soap made from olive oil and formulated without parabens, silicone oil or sulfates. Leaves skin feeling refreshed, revitalized and luxuriously moisturized while it cleanses.



vegan formula made  
from olive oil



## revitalize

### FOR OILY SKIN

**Tea Tree & AHA BHA**  
Controls oil as it deeply cleanses and refreshes. Fresh herbal scent. 16.2 fl. oz. 348-115 reg. \$19 **\$14.99**

## moisturize

### FOR DRY SKIN

**Rose Water & Hyaluronic Acid**  
Low-pH formula helps replenish soothing moisture. Crisp floral scent. 16.2 fl. oz. 348-100 reg. \$19 **\$14.99**

## NEW

## soothe

### FOR NORMAL SKIN

**Lavender Oil & Vitamin E**  
With ingredients that help skin feel refreshed and promote a relaxing experience. Calming lavender scent. 16.2 fl. oz. 048-398 reg. \$19 **\$14.99**



Best of  
K-Beauty



Best of  
K-Beauty

AN ORAL CARE  
INNOVATION:

## HIMALAYA PINK SALT

For a healthy-looking, whiter,  
brighter smile. Enriched with  
Himalayan Pink Salt.



### Himalaya Pink Salt Intensive Whitening Toothpaste (with Fluoride) 3-Piece Pack

Clinically tested to whiten teeth in one week; 9X more than regular toothpaste without SHMP. 24-hour stain resistance. With sodium fluoride, an anticavity ingredient that helps strengthen enamel. Pink paste. Spearmint flavor. Each, 4.2 oz. net wt. **729-689** reg. \$36

**\$26.99**  
the 3-piece pack



### Himalaya Pink Salt Purple Color Corrector + Intensive Whitening Toothpaste (with Fluoride)

Purple toothpaste with advanced color-correcting power. Clinically tested to reduce yellow stains on teeth by 2X after one use; 9X more than regular toothpaste. Visibly whiter teeth in one week. 24-hour stain resistance. Vanilla mint flavor. Formulated without parabens, gluten, phthalates and triclosan. 3.5 oz. net wt.

**383-624** reg. \$12  
**\$9.49**



### Himalaya Pink Salt Purple Whitening Toothbrush

Purple color fades as bristles wear, reminding you to replace. Clinically tested to remove 4X more interdental plaque.\* Bristles with 2X the elasticity clean narrow gaps between teeth and the gum line.

**383-165** reg. \$6  
**\$4.99**

\*Compared to LG H&H regular toothbrush with soft bristles.



### Himalaya Pink Salt Whitening Toothbrush (Medium)

Bristles are infused with Himalayan pink salt for effective cleansing and a gentle brightening effect. Medium-sized brush. High-tension bristles penetrate narrow gaps. **729-359** reg. \$6

**\$4.99**



### Himalaya Pink Salt Intensive Whitening Toothbrush (Large)

Bristles are infused with Himalayan pink salt for effective cleansing and a brightening effect. Large-sized brush. High-tension bristles penetrate narrow gaps. **035-812** reg. \$6

**\$4.99**







#### Foot Works Pedicure Tool

4 in 1:

- Fine-grain file
- Metal file
- Pumice
- Brush

592-712 reg. \$12

**\$9.49**

#### Foot Works Maximum Strength Cracked Heel Cream

Transforms the look and feel of dry, cracked heels.

2.5 fl. oz.

086-762

reg. \$12

**\$9.49**



#### Foot Works Intensive Callus Cream

Softens and moisturizes dry, rough skin.

3.2 oz. net wt.

851-310

reg. \$12

**\$9.49**



#### Foot Works Intensive Moisture Foot Cream

Suitable for diabetics.

2.5 fl. oz.

069-016

reg. \$12

**\$9.49**



CUTICLE  
PUSHER

SCISSORS

SMALL  
NAIL  
FILE

NAIL  
CLIPPER

TOENAIL  
CLIPPER



#### Foot Works Pedicure Kit

Case, 3 1/2" L x 4 3/4" W.

121-029 reg. \$15

**NOW \$8.99**

#### Foot Works Deodorizing Spray

Can also be used in footwear.

3.5 oz. net wt.

313-236

reg. \$15

**\$11.99**



#### Foot Works Arthritis Achy Foot and Muscle Cream

Contains glucosamine and chondroitin.

2.5 fl. oz.

208-400

reg. \$12

**\$9.49**





**Veilment  
Glacial Water  
Cooling Body Scrub  
& Cleanser**  
13.5 fl. oz.  
573-480  
reg. \$18  
**NOW \$10.49**



**Veilment  
Dead Sea Salt  
Body Scrub  
& Cleanser**  
13.5 fl. oz.  
781-992  
reg. \$18  
**NOW \$10.49**



**Veilment  
Black Rose  
Body Scrub  
& Cleanser**  
13.5 fl. oz.  
707-969  
reg. \$18  
**NOW \$10.49**



**Veilment  
Himalaya Pink Salt  
Exfoliating Soap**  
5.3 oz. net wt. 260-440  
reg. \$8  
**NOW \$4.49**



**Avon Shower Brush**  
Long handle to reach  
down back. Brush helps  
remove dead skin cells  
as it cleanses. Back of  
brush features massage  
nubs. Non-slip, comfort  
handle has a convenient  
hanging loop. 904-727  
reg. \$11  
**\$8.49**

**Exfoliation Mitt**  
Microfiber jacquard, with  
nylon/spandex cuff. 439-734  
reg. \$14  
**\$10.99**



Rare Pearls  
906-897

Haiiku  
809-060

Odyssey  
740-250

Sweet Honesty  
439-021

Timeless  
885-302

Candid  
656-095

Rare Gold  
613-154

Far Away  
891-376

Imari  
464-366

Night Magic  
Evening Musk  
862-590

Skin So Soft  
Soft & Sensual  
050-820

Cool Confidence  
Original  
872-469

Cool Confidence  
Baby Powder  
427-275

Feelin' Fresh  
Original  
907-750

On Duty Sport  
875-726

On Duty Unscented  
464-351

On Duty Original  
393-970

Black Suede  
813-567

Mesmerize  
875-874

Wild Country  
656-080

**Roll-On  
Anti-Perspirant  
Deodorant**  
Each, 2.6 fl. oz.  
reg. \$6.25  
**\$4.99 each**

**Perfumed Liquid Deodorant**  
Soft floral scent. Aluminum-free.  
Fast-drying. Easy fingertip application.  
2 fl. oz. 889-915  
reg. \$10  
**\$7.49**



**Avon Microbiome by Reach®  
Hygiene Deodorant Stick**  
Floral citrus scent. Aluminum-  
free. 24-hour odor protection.  
2.65 oz. net wt.  
524-528  
reg. \$16  
**\$12.99**





## make the great outdoors yours

Our DEET-free repellents protect your family without chemicals that feel harsh on skin. **Bug Guard** repels deer ticks that may carry and transmit Lyme disease.



**Bug Guard Plus  
IR3535® Expedition  
Aerosol Spray SPF 28**  
Repels mosquitoes  
that may transmit  
West Nile virus for  
8 hours. Repels deer  
ticks for 12 hours.  
4 oz. net wt.  
521-370 reg. \$25  
**\$19.99**



**Bug Guard Plus  
Picaridin  
Aerosol Spray**  
4 oz. net wt.  
315-243  
reg. \$25  
**\$19.99**



**Bug Guard Plus  
Picaridin  
Pump Spray**  
4 fl. oz.  
510-161  
reg. \$19.25  
**\$13.99**



**Bug Guard Plus  
Picaridin  
Family-Size  
Pump Spray**  
8 fl. oz.  
510-195  
reg. \$25.50  
**\$19.99**



**Bug Guard Plus  
Picaridin  
Towelettes**  
Each, 9" L x  
5 1/2" W, .3 fl. oz.  
269-562  
reg. \$16  
**\$12.99**  
pack of 8



**Bug Guard Plus  
Anti-Itch Spray**  
Provides temporary  
itch relief from insect  
bites. Does not repel  
insects. Use as  
directed. 2 fl. oz.  
510-032  
reg. \$15  
**\$10.99**



Gentle Breeze  
water-resistant plus SPF  
**sun+water+bugs**

**Bug Guard Plus IR3535®  
Gentle Breeze  
SPF 30 Lotion**  
4 fl. oz. 781-940  
reg. \$19  
**\$14.99**

- **REPELS MOSQUITOES THAT MAY CARRY AND TRANSMIT THE ZIKA VIRUS**
- **DEET-FREE / PABA-FREE**
- **NO NEED TO WASH OFF**
- **WATER-RESISTANT**
- **SPF 30**
- **WITH ALOE & VITAMIN E**
- **DERMATOLOGIST-TESTED**



CHI's unique blend of botanicals includes aloe vera, pomegranate, hibiscus and other nutrient-rich ingredients for healthy-looking hair.

**CHI® Essentials  
Moisturizing Conditioner**  
12 fl. oz. 589-409  
reg. \$23

**NOW \$13.49**

**CHI® Essentials  
Replenishing Shampoo**  
12 fl. oz. 589-140  
reg. \$23

**NOW \$13.49**



**Elastine  
Salon de Color  
Color Vibe  
Purple Shampoo**  
8.4 fl. oz. 436-109  
reg. \$19

**NOW \$10.99**



**Elastine  
Salon de Color  
Color Vibe  
Purple Conditioner**  
8.4 fl. oz. 436-955  
reg. \$19

**NOW \$10.99**



**Avon  
Blow-Dry  
Round Hairbrush**  
504-800  
reg. \$20  
**\$15.99**



**Avon  
Detangling  
Comb**  
504-820  
reg. \$9  
**\$6.49**



**CHI® Essentials  
Revive Keratin +  
Bonding  
Restoring  
Shampoo**  
12 fl. oz. 451-192  
reg. \$25  
**NOW \$14.99**



**Avon  
Compact  
Hairbrush**  
504-743  
reg. \$11  
**\$8.49**



**Avon Detangling  
Hairbrush**  
504-815  
reg. \$14  
**\$10.99**

**FREE**  
with any  
2 hair care  
purchases  
pages 122 to 127\*

\*Purchase of Avon Detangling  
Hairbrush does not count  
toward any 2 purchases.







## SALON-INSPIRED FORMULAS

### Root Touch-Up

Instantly covers roots and bare spots. With black bean and ginseng. Built-in mirror. Each, .25 oz. net wt. reg. \$20

**\$15.99 each**

- |   |   |
|---|---|
|  |  |
| Reddish Brown<br>243-627  | Light Brown<br>244-642  |
|  |  |
| Dark Brown<br>245-213   | Black<br>245-251  |



### Advance Techniques Daily Shine 2-in-1 Shampoo & Conditioner

11.8 fl. oz.  
553-413  
reg. \$19

**\$14.99**



### Elastine PropoliThera Damage Repair Shampoo

16.9 fl. oz.  
053-082  
reg. \$20

**NOW \$11.99**



### Elastine PropoliThera Damage Repair Conditioner

16.9 fl. oz.  
638-681  
reg. \$20

**NOW \$11.99**



Best of  
K-Beauty

### Elastine PropoliThera Hair Oil Serum

5.7 fl. oz.  
895-190  
reg. \$23

**NOW \$12.49**



### Elastine PropoliThera Serum Treatment

7.8 fl. oz.  
359-821  
reg. \$23

**NOW \$13.49**



### Elastine PropoliThera Hair Deep Conditioning Treatment Cap

053-761  
reg. \$9

**NOW \$4.99**



### AVON DETANGLING HAIRBRUSH

**FREE**

with any  
2 hair care  
purchases  
pages 122-127  
details, page 123







**Dr. Groot Professional Bonding System 01 Bond Fortifying Shampoo**  
Helps fortify hair from the roots and visibly restore smoothness. 13 fl. oz. **701-607**  
**\$30**



**Dr. Groot Professional Bonding System 02 Keratin Water Treatment**  
Water-to-cream formula. Hair looks instantly smoother. Use 2X-3X a week. 6.7 fl. oz. **701-611**  
**\$30**



**Dr. Groot Premium Scalp Cleansing Brush**  
Helps reinvigorate scalp health and stimulate circulation. **065-776** reg. \$20  
**\$16**



**Dr. Groot Professional Bonding System 03 Bond Fortifying Conditioner**  
Instantly helps minimize frizz.\* 8.4 fl. oz. **701-865**  
**\$30**  
\*Based on a clinical test of 19 hair tresses.



**Dr. Groot Professional Bonding System 04 Bond Fortifying Instant Repair Serum**  
Restorative leave-in serum. Apply to damp or dry hair. 4.2 fl. oz. **702-130**  
**\$30**

**Best of K-Beauty**

## WANT GREAT HAIR? START AT THE SCALP.



**Dr. Groot Scalp Revitalizing Solution**  
Think of scalp care as an extension of skin care. With **biotin** and **capsulated prebiotics**, these formulas offer a uniquely customized solution that gets to the root of your problem.

**Hair Thickening Shampoo**  
Helps hair look thicker and fuller. Infused with biotin and prebiotics. 13 fl. oz. **715-064**  
**\$30**

**Purifying Clay Shampoo**  
Instantly purify roots, hydrate dry ends. With three kinds of clay (white, herbal, glacial) plus biotin and salicylic acid. 13 fl. oz. **715-098**  
**\$30**

**Scalp Relief Tonic**  
Helps hydrate dry scalp. With calming chamomile, moisturizing niacinamide and cooling menthol. 4.73 fl. oz. **717-110**  
**\$30**

**Scalp Soothing Shampoo**  
Helps refresh, moisturize and comfort your scalp. With biotin and cica extract. 13 fl. oz. **715-083**  
**\$30**

**Miracle in Shower Treatment**  
Hair looks smoother and healthier instantly. With nourishing arginine, panthenol, niacinamide and salicylic acid. 8.4 fl. oz. **715-451**  
**\$30**



**Dr. Groot Scalp Fortifying Serum Treatment**  
Moisturizes and helps support healthy hair roots. 6.7 fl. oz. **782-271** reg. \$35  
**\$29**



**Dr. Groot Scalp Fortifying Hair-Thickening Shampoo**  
With coconut oil, cleanses as it helps moisturize dry scalp and hair. 13.5 fl. oz. **778-014** reg. \$35  
**\$29**

**AVON DETANGLING HAIRBRUSH**  
**FREE**  
with any 2 hair care purchases  
pages 122-127  
details, page 123



**Dr. Groot Anti-Dandruff Scalp Care Shampoo**  
Contains 3% salicylic acid, biotin, caffeine, rosemary and menthol. No silicones. 10.1 fl. oz. **451-412** reg. \$30  
**\$22.99**



one...  
and  
done

## NEW

### ❖ Drawstring Dress

Dusk blue V-neck dress with adjustable drawstring at waist.  $\frac{3}{4}$ -length sleeves with elastic cuff. Features ladder-lace trim at sleeve seam. 100% polyester. Center back length: 38½" on M; 39" on 1X. Machine wash, line dry. Imported.

XS(0-2) 103-180

S(4-6) 103-209

M(8-10) 103-251

L(12-14) 103-285

XL(16) 103-395

1X(18W-20W) 103-687

2X(22W-24W) 103-759

3X(26W-28W) 103-797

reg. \$49.99

**\$39.99**

Blue Modern Mosaic Collection  
sold on page 147.

ADJUSTABLE  
DRAWSTRING  
at waist

LADDER-  
LACE  
trim at  
sleeve  
seams



### ❖ Metallic Phone Case

Distressed golden metallic phone case with adjustable crossbody strap and zipper closure. Includes outside and inside slotted pocket. 4½" L x 2" W x 7" H. Strap: 27" L [fully extended]. Man-made materials. Imported. **046-983**

reg. \$32.99

**\$24.99**



## metallics in the mix

### ❖ Beaded Bloom Bag Charm

Semi-precious stones with glass and pearlesque beads. Approx. 4½" L.

Happy/Lapis 103-801

Love/Purple Amethyst 103-854

Luck/Green Aventurine 103-835

reg. \$12.99

**\$9.99 each**

### ❖ Low Heel Mule

Black open-toe sandal with golden metallic block heel. 2" L heel. Man-made materials. Imported.

6 102-968 8 103-050 10 103-084

7 103-031 9 103-065 11 103-099

reg. \$49.99

**\$39.99**





**ALL NEW**

❖ **Shadow Stripe Shirt**  
Smoke grey stripe satin shirt with collar, button front, rounded hem and long sleeves with buttoned cuff. Polyester/spandex. Center back length: 27" on M; 28" on 1X. Machine wash, line dry. Imported.

XS(0-2) 103-945

S(4-6) 104-019

M(8-10) 104-038

L(12-14) 104-042

XL(16) 104-239

1X(18W-20W) 104-372

2X(22W-24W) 104-391

3X(26W-28W) 104-698

reg. \$44.99

**\$34.99**

❖ **Front Seam Pant**

Smoke grey pull-on pants with side seam pockets and a straight-leg fit with front seam detail. Flat-front waist has an elastic back. Rayon/nylon/spandex. Inseam: 29" on all sizes. Machine wash, dry flat. Imported.

XS(0-2) 104-717

S(4-6) 104-740

M(8-10) 104-755

L(12-14) 104-831

XL(16) 104-870

1X(18W-20W) 104-884

2X(22W-24W) 104-956

3X(26W-28W) 105-020

reg. \$56.99

**\$44.99**

SATIN STRIPE  
button  
down with  
a classic  
collar

bring on  
the greys

FRONT  
SEAM  
detail and  
a straight-  
leg fit

**NEW**

❖ **Simple Ballet Flat**  
Black ballet flat with soft square toe and elastic bow. Padded insole and rubber outsole. Man-made materials. Imported.

6 105-034

7 105-144

8 105-398

9 105-417

10 105-436

11 105-675

reg. \$36.99

**\$27.99**

CLASSIC  
BALLET  
FLAT  
with bow  
detail

chic & classic

**NEW**

❖ **Lace Foot Covers**

No-show stretch lace foot covers with gel grip around top. Lightweight fabric provides ventilation. Upper: nylon. Sole: cotton/spandex. One size. Machine wash and dry. Imported.

Black 106-595

Gray 106-600

reg. \$8.99

**\$6.99 each pair**





## textured tops



### NEW

#### ❖ Textured Halter Top

Black pleated halter top with keyhole at back of neck. Features scallop-edge hem. 100% polyester. Center back length: 24½" on M; 26½" on 1X. Machine wash, dry flat. Imported.

XS(0-2) 106-428

S(4-6) 106-432

M(8-10) 106-447

L(12-14) 106-451

XL(16) 106-470

1X(18W-20W) 106-504

2X(22W-24W) 106-519

3X(26W-28W) 106-580

reg. \$39.99

**\$29.99**

Meadow Cluster Earrings  
sold on page 162.

PLEATED  
halter  
top with  
scallop-  
edge hem



**NEW**  
❖ Smocked Blouse  
Wine-colored blouse with front smocking, round neckline, short sleeves and scallop-edge hem. Polyester/spandex. Center back length: 25½" on M; 26½" on 1X. Machine wash, dry flat. Imported.

XS(0-2) 105-713

S(4-6) 105-728

M(8-10) 105-766

L(12-14) 105-770

XL(16) 106-212

1X(18W-20W) 106-380

2X(22W-24W) 106-409

3X(26W-28W) 106-413

reg. \$46.99

**\$36.99**

Classic Jewel Collection  
sold on page 163.

SMOCKED-  
FRONT  
blouse with  
scallop-edge  
hem





yay,  
chambray!

❖ **Chambray Dress**

Denim blue lightweight chambray dress with V-neckline and short sleeves. Features button front, ruffle hem and self-tie fabric belt at waist. 100% lyocell. Center back length: 36½" on M; 37½" on 1X. Machine wash, line dry (remove belt before washing). Imported.

XS(0-2) **042-002**

S(4-6) **042-055**

M(8-10) **042-060**

L(12-14) **042-074**

XL(16) **042-347**

1X(18W-20W) **042-351**

2X(22W-24W) **042-370**

3X(26W-28W) **042-969**

reg. \$56.99

**\$44.99**

Color Cascade Layered  
Collection sold on  
page 154.



❖ **Relaxed Rolled Sleeve Top**

Black relaxed-fit top with round neckline and short rolled sleeves that are fixed. Mixed material features textured front with soft-knit back. Front panel: polyester/spandex. Back panel and trim: polyester/rayon/spandex. Center back length: 22½" on M; 24½" on 1X. Machine wash and dry. Imported.

XS(0-2) **043-066**

S(4-6) **043-070**

M(8-10) **043-119**

L(12-14) **044-631**

XL(16) **044-904**

1X(18W-20W) **045-054**

2X(22W-24W) **046-099**

3X(26W-28W) **046-448**

reg. \$46.99

**\$36.99**



❖ **2-Pack V-Neck Tees**

Includes fuchsia and light green tees with V-neckline and short sleeves. 100% cotton. Center back length: 23½" on M; 25" on 1X. Machine wash and dry. Imported.

XS(0-2) **046-820**

XL(16) **046-926**

S(4-6) **046-840**

1X(18W-20W) **046-945**

M(8-10) **046-873**

2X(22W-24W) **046-950**

L(12-14) **046-907**

3X(26W-28W) **046-964**

reg. \$46.99

**\$36.99 the pack**

❖ **Striped Wide-Leg Crop Pant**

Black and multicolor stripe pleated crop pant. Features wide-leg fit and elastic waistband for easy pull-on styling. 100% polyester. Inseam: 23" on all sizes. Machine wash and dry. Imported.

XS(0-2) **046-510**

XL(16) **046-562**

S(4-6) **046-539**

1X(18W-20W) **046-581**

M(8-10) **046-543**

2X(22W-24W) **046-596**

L(12-14) **046-558**

3X(26W-28W) **046-816**

reg. \$46.99

**\$36.99**

Low Heel Mule sold on page 129.



**SHEER  
OVERLAY**  
top with lining  
and three-  
quarter length  
sleeves

**Lightweight Top**  
Sheer floral print  
overlay top with  
lining and flowy  
¾-length sleeves.  
Body and lining:  
100% polyester.  
Center back length:  
26" on M; 28" on 1X.  
Machine wash,  
line dry. Imported.  
XS(0-2) **907-377**  
S(4-6) **907-453**  
M(8-10) **907-468**  
L(12-14) **907-487**  
XL(16) **907-544**  
1X(18W-20W) **907-582**  
2X(22W-24W) **907-597**  
3X(26W-28W) **907-601**  
reg. \$44.99  
**\$34.99**

## floaty florals

❖ **Linen Pull-On Pant**  
Khaki green linen-  
blend pant with  
smocked waist.  
Features side seam  
pockets and straight  
leg fit. Polyester/  
rayon/linen. Inseam:  
29" on all sizes.  
Machine wash,  
line dry. Imported.  
XS(0-2) **907-640**  
S(4-6) **907-688**  
M(8-10) **907-692**  
L(12-14) **908-024**  
XL(16) **908-149**  
1X(18W-20W) **908-851**  
2X(22W-24W) **908-866**  
3X(26W-28W) **908-870**  
reg. \$49.99  
**\$39.99**

Island Sandal sold on page 141.

**PULL-ON**  
pant with  
smocked waist  
and straight-  
leg fit



2-PACK

❖ **2-Pack Rib-Knit Tanks**  
Includes khaki green  
and beige ribbed tanks  
with scoop neck. Cotton/  
spandex. Center back  
length: 21½" on M;  
23½" on 1X. Machine  
wash and dry. Imported.  
XS(0-2) **909-437**  
S(4-6) **909-441**  
M(8-10) **909-790**  
L(12-14) **910-054**  
XL(16) **910-422**  
1X(18W-20W) **910-437**  
2X(22W-24W) **910-441**  
3X(26W-28W) **910-480**  
reg. \$32.99

**\$24.99 the pack**



❖ **Knit Pullover**  
Beige lightweight  
pullover with V-neck  
and side slits. Versatile  
layering piece can be  
worn over a swimsuit  
or tank. Polyester/  
spandex. Center back  
length: 26" on M/L;  
27" on XL/1X.  
Machine wash and dry.  
Imported.  
XS/S **911-008**  
M/L **911-103**  
XL/1X **911-122**  
2X/3X **911-180**  
reg. \$49.99  
**\$39.99**

Moonlight Waves Collection sold on  
page 159. Knit Pullover is paired with  
the beige 2-Pack Rib-Knit Tank.





# sunshine vibes

Keep it light and bright in summer-ready white with golden stripes and a flowy fit that flits.

## ❖ Metallic Stripe Wrap Dress

White surplice dress with golden metallic stripes. Sleeveless styling, self-tie belt at waist and back zipper closure. Bottom is lined. Body and lining: 100% polyester. Center back length: 48½" on M; 49½" on 1X. Machine wash, line dry (remove self-tie belt before washing). Imported.

XS(0-2) 906-586

S(4-6) 906-590

M(8-10) 906-830

L(12-14) 906-954

XL(16) 906-973

1X(18W-20W) 907-104

2X(22W-24W) 907-157

3X(26W-28W) 907-248

reg. \$53.99

**\$42.99**

Abalone Gemstone Collection

sold on page 158.

Shoes not sold.

SURPLICE  
faux  
wrap  
styling

BOTTOM  
LINING  
hits below  
the knee

# oh-so flamingo

## ❖ Flamingo PJ Set

2-piece striped pajama set with pink flamingo print. Top with V-neck and short sleeves. Pull-on cropped bottoms with elastic waist. Polyester/spandex. Center back length: 23½" on M; 25½" on 1X. Inseam: 21½" on all sizes. Machine wash and dry. Imported.

XS(0-2) 916-469

S(4-6) 918-658

M(8-10) 918-662

L(12-14) 918-696

XL(16) 918-901

1X(18W-20W) 918-954

2X(22W-24W) 919-582

3X(26W-28W) 920-472

reg. \$46.99

**\$36.99 the set**



## ❖ Flamingo Slippers

Soft-knit ivory slippers with embroidered flamingo motif. Features striped insole and rubber outsole. Man-made materials. Imported.

S(5-6) 915-917

L(9-10) 916-249

M(7-8) 915-936

XL(11-12) 916-454

reg. \$22.99

**\$16.99**

## APPAREL SIZE CHART

| SIZE       | BUST        | WAIST       | HIP         |
|------------|-------------|-------------|-------------|
| XS 0/2     | 30.5"-32"   | 23.5"-25"   | 32.5"-34"   |
| S 4/6      | 33.5"-35"   | 26.5"-28"   | 35.5"-37"   |
| M 8/10     | 36.5"-38"   | 29.5"-31"   | 38.5"-40"   |
| L 12/14    | 39.5"-41"   | 32.5"-34"   | 41.5"-43"   |
| XL 16      | 43"-44"     | 35.5"-36.5" | 44.5"-45.5" |
| 1X 18W/20W | 46.5"-48.5" | 39"-41"     | 48"-50"     |
| 2X 22W/24W | 50.5"-52.5" | 43"-45"     | 52"-54"     |
| 3X 26W/28W | 54.5"-56.5" | 47"-49"     | 56"-58"     |



# totes to toes

## A. ♦ Market Tote

Natural oversized canvas tote with contrasting peach straps and trim. Features front pocket. 100% cotton. 23½" L x 8" W x 14" H. Handle drop: 10½" L. Imported. **676-161** reg. \$28.99

**\$21.99**

## B. ♦ Maxi Lounge Dress\*

Peach gauze sleeveless maxi dress features round neckline, side slits and a relaxed fit. 100% cotton. Center back length: 47" on M and 1X. XS(0-2) **672-568** XL(16) **673-067** S(4-6) **672-769** 1X(18W-20W) **673-158** M(8-10) **672-807** 2X(22W-24W) **673-344** L(12-14) **672-879** 3X(26W-28W) **673-363** reg. \$49.99

**\$39.99**

## C. ♦ Spring Floral Dress\*

Light green chiffon dress with fuchsia floral print. Features V-neckline, flutter sleeves, ruffle hem and self-tie fabric belt at waist. Back zipper closure. Body and lining: 100% polyester. Center back length: 40¾" on M; 42" on 1X. (Remove self-tie fabric belt before washing.)

XS(0-2) **610-189** XL(16) **610-246** S(4-6) **610-208** 1X(18W-20W) **610-270** M(8-10) **610-212** 2X(22W-24W) **610-318** L(12-14) **610-231** 3X(26W-28W) **610-360** reg. \$56.99

**\$44.99**

## D. ♦ Beach Tote

Orange nylon-and-mesh tote with top zipper closure, multiple outside slotted pockets and inside zippered pocket. 100% polyester. 13" H x 18" W x 7" D. Handle drop: 11" L. Imported. **759-441** reg. \$39.99

**\$29.99**

## E. ♦ Roll-Up Sun Hat

Natural-colored braided roll-up sun hat. Features bow detail at back with hook-and-loop closure. Roll-up design for easy storage/travel. Paper/polyester. One size. Imported. **759-460** reg. \$22.99

**\$16.99**



\*Machine wash, line dry. \*Machine wash and dry. Imported.

## A. ♦ Petal Sleeve Top\*

Top features short petal sleeves and scallop-edged neckline. Polyester/spandex. Center back length: 22" on M; 24½" on 1X.

|                            |                            |
|----------------------------|----------------------------|
| Turquoise                  | Yellow                     |
| XS(0-2) <b>667-319</b>     | XS(0-2) <b>667-998</b>     |
| S(4-6) <b>667-653</b>      | S(4-6) <b>668-520</b>      |
| M(8-10) <b>667-763</b>     | M(8-10) <b>668-918</b>     |
| L(12-14) <b>667-816</b>    | L(12-14) <b>669-273</b>    |
| XL(16) <b>667-983</b>      | XL(16) <b>669-288</b>      |
| 1X(18W-20W) <b>669-383</b> | 1X(18W-20W) <b>669-713</b> |
| 2X(22W-24W) <b>669-546</b> | 2X(22W-24W) <b>669-819</b> |
| 3X(26W-28W) <b>669-603</b> | 3X(26W-28W) <b>669-948</b> |

reg. \$39.99

**\$29.99 each**

## B. ♦ Chunky EVA Slide

Ivory lightweight EVA slide with molded ribbed upper. Can be worn indoors or outdoors. Half sizes should size down. Man-made materials. Imported.

|                       |                        |
|-----------------------|------------------------|
| S(5-6) <b>606-869</b> | L(9-10) <b>606-983</b> |
| M(7-8) <b>606-979</b> | XL(11) <b>606-998</b>  |

reg. \$19.99

**\$14.99**

## C. ♦ Button Front Skirt\*

White crepe skirt features decorative buttons with a faux-wood finish. Flat-front waistband with an elastic back. Calf-length; lined through the knee. Body: 100% rayon. Lining: 100% polyester. Center back length: 28" on M; 29" on 1X.

|                         |                            |
|-------------------------|----------------------------|
| XS(0-2) <b>669-967</b>  | XL(16) <b>670-159</b>      |
| S(4-6) <b>669-986</b>   | 1X(18W-20W) <b>670-163</b> |
| M(8-10) <b>670-034</b>  | 2X(22W-24W) <b>670-178</b> |
| L(12-14) <b>670-068</b> | 3X(26W-28W) <b>670-182</b> |

reg. \$44.99

**\$34.99**

## D. ♦ Scatter Floral Top\*

Navy top with white floral print features double-layer flutter sleeves and tie detail at neckline. Elastic smocking at front and back top panels. Polyester/spandex. Center back length: 23" on M; 24½" on 1X.

|                         |                            |
|-------------------------|----------------------------|
| XS(0-2) <b>672-238</b>  | XL(16) <b>672-348</b>      |
| S(4-6) <b>672-300</b>   | 1X(18W-20W) <b>672-352</b> |
| M(8-10) <b>672-314</b>  | 2X(22W-24W) <b>672-443</b> |
| L(12-14) <b>672-329</b> | 3X(26W-28W) <b>672-500</b> |

reg. \$44.99

**\$34.99**

## E. ♦ Garden Striped Button-Down Top\*

Floral- and stripe-print collared shirt features button-front placket and cuff sleeves. Relaxed/oversized fit. Polyester/cotton. Center back length: 27½" on M; 29" on 1X.

|                         |                            |
|-------------------------|----------------------------|
| XS(0-2) <b>676-453</b>  | XL(16) <b>677-741</b>      |
| S(4-6) <b>676-530</b>   | 1X(18W-20W) <b>677-890</b> |
| M(8-10) <b>676-620</b>  | 2X(22W-24W) <b>677-961</b> |
| L(12-14) <b>677-699</b> | 3X(26W-28W) <b>677-976</b> |

reg. \$53.99

**\$42.99**



## ♦ Island Sandal

White leatherlike sandal features halter back and peep toe. Inside elastic on halter strap and padded insole. Half sizes should size up. Man-made materials. Imported.

6 **670-220** 8 **671-633** 10 **671-872**  
7 **670-474** 9 **671-868** 11 **672-056**

reg. \$39.99

**\$29.99**



**A. ♦ Stacked Avon T-Shirt\***

Black crew-neck tee with short sleeves and black graphic print. 100% cotton. Center back length: 29" on L.

S 636-215    XXL 636-287  
M 636-220    XXXL 636-291  
L 636-234    XXXXL 636-306  
XL 636-272  
reg. \$28.99

**\$21.99**

**B. ♦ Avon 1886 Cap**

Off-white unisex baseball cap with gold metallic embroidered logo, adjustable tuck-in strap and metal buckle. 100% cotton. One size fits most. Hand wash and hang dry. Imported.

639-855  
reg. \$24.99

**\$19.99**

**C. ♦ Avon Calling Long-Sleeve T-Shirt\***

Grey unisex tee with pink metallic and cream graphic logo, crew neck and long sleeves. 100% cotton. Center back length: 29" on L.

S 636-310    XXL 636-378  
M 636-344    XXXL 636-416  
L 636-359    XXXXL 636-473  
XL 636-363  
reg. \$32.99

**\$24.99**

**E. ♦ Split Avon Hoodie\***

Pink unisex pullover hoodie with kangaroo pocket and multicolor logo print. Cotton/polyester. Center back length: 27½" on L.

S 636-507    XXL 636-640  
M 636-511    XXXL 636-655  
L 636-621    XXXXL 636-689  
XL 636-636  
reg. \$46.99

**\$36.99**

**F. Avon Beyond Glow Pin**

The look of the serum pump dispenser with white enamel cap and label set in silvertone. 1¼" L. 011-114

reg. \$9.99

**\$7.99**

**G. Avon Skin So Soft Pin**

The look of the lotion bottle with green enamel set in silvertone. 1¼" L. 011-243

reg. \$9.99

**\$7.99**

**A. ♦ Avon Feelin' Fresh Hoodie\***

Ivory unisex pullover hoodie with kangaroo pocket and blue/green logo print. Cotton/polyester. Center back length: 27½" on L.

S 057-714    XXL 059-698  
M 057-934    XXXL 060-224  
L 058-888    XXXXL 060-300  
XL 059-406

reg. \$49.99

**\$39.99**

**B. ♦ Ring My Bell Long-Sleeve T-Shirt\***

Black unisex crew-neck tee with short sleeves and colored logo foil graphic. 100% cotton. Center back length: 29" on L.

S 060-520    XXL 060-717  
M 060-554    XXXL 060-721  
L 060-569    XXXXL 060-736  
XL 060-588

reg. \$32.99

**\$24.99**

**C. ♦ Avon Archive Mist T-Shirt\***

Pink unisex crew-neck tee with short sleeves and vintage print graphic. 100% cotton. Center back length: 29" on L.

S 060-740    XXL 060-793  
M 060-755    XXXL 060-812  
L 060-774    XXXXL 060-827  
XL 060-789

reg. \$28.99

**\$21.99**

**D. ♦ Avon Archive Nail T-Shirt\***

Ivory unisex crew-neck tee with short sleeves and vintage print graphic. 100% cotton. Center back length: 29" on L.

S 060-831    XXL 060-918  
M 060-850    XXXL 060-937  
L 060-865    XXXXL 060-941  
XL 060-870

reg. \$28.99

**\$21.99**

**E. ♦ Sweet Honesty Short-Sleeve T-Shirt\***

Pink crew-neck tee with short sleeves and green logo print. 100% cotton. Center back length: 29" on L.

S 060-315    XXL 060-478  
M 060-320    XXXL 060-497  
L 060-334    XXXXL 060-501  
XL 060-444

reg. \$28.99

**\$21.99**

**♦ Avon Button Notebook**

Spiral-bound with button-pin print graphics. Includes 100 lined pages and '24-'26 calendar. Man-made materials. 5" W x 7" L. Imported. 060-516 reg. \$20.99

**\$15.99**



## ALL NEW

**Crimson Aurora Collection**  
Crimson-colored beads with goldtone.

**Multi-Row Beaded Necklace**  
Four-row necklace. 16½" L with 3½" extender. Lobster closure. **109-010**  
reg. \$32.99  
**\$24.99**

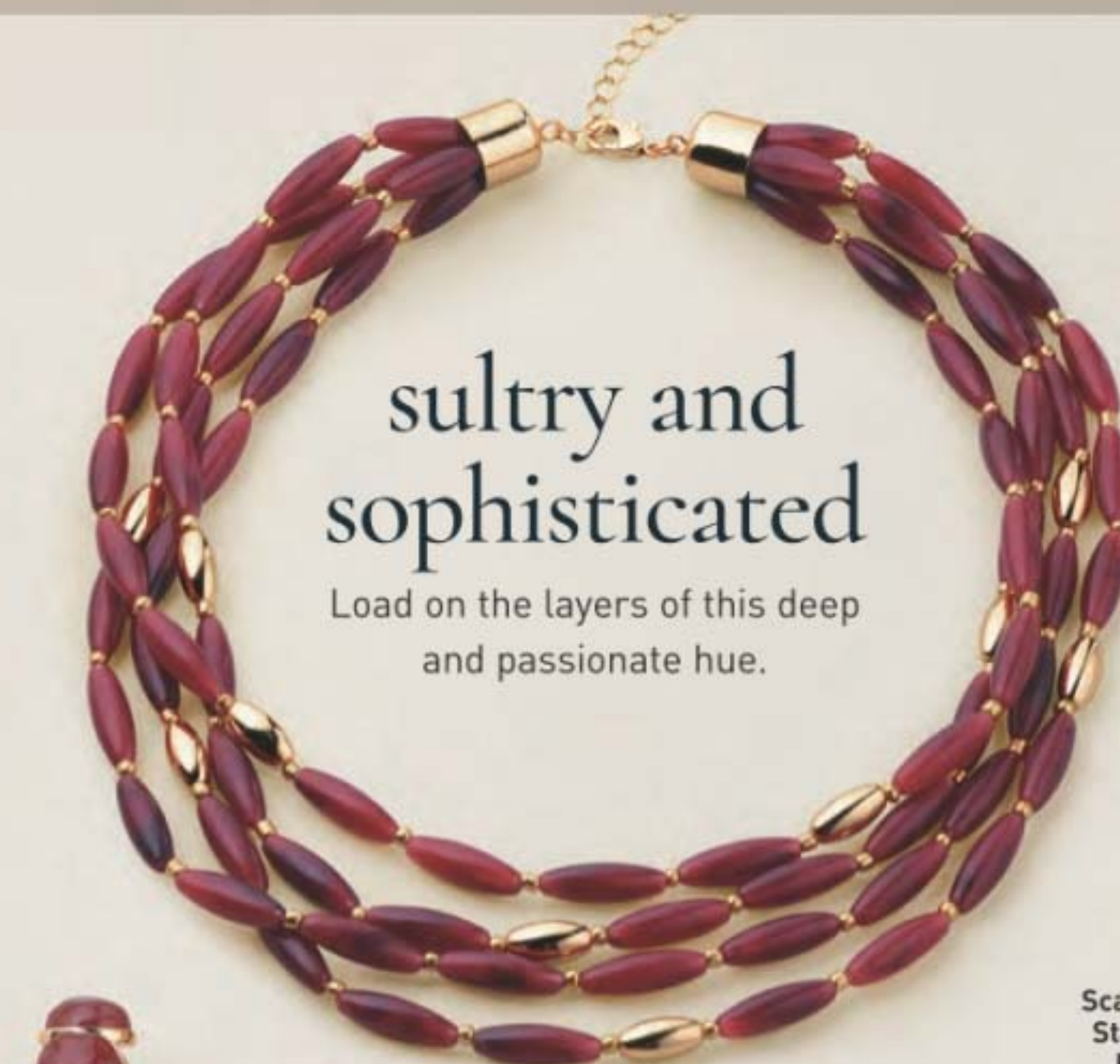
**Multi-Row Beaded Bracelet Set**  
Set of four stretch bracelets. Stretches to fit most. **109-025**  
reg. \$16.99  
**\$12.99 the set**

**Bead Hoop Earrings**  
Rounded cabochon-style beads. Approx. 1½" L. Pierced. **109-078**  
reg. \$12.99  
**\$9.99**



sultry and sophisticated

Load on the layers of this deep and passionate hue.



**Scarlet Arc Statement Earrings**

Goldtone with red curved stones. Approx. 1" L. Pierced. **109-082**  
reg. \$16.99

**\$12.99**

**Abstract Arc Statement Earrings**

Goldtone bar with multicolor drops. Approx. 1½" L. Pierced. **109-097**  
reg. \$9.99

**\$7.99**



set of 4 bracelets





**ALL NEW**

**Radiant Pavé Teardrop Set**  
SILVERTONE with pavé-accented pendant. 16½" L with 3½" extender. Pendant, 1" L. Pierced drops, approx. 1½" L.  
**109-230**  
reg. \$24.99

**\$19.99 the set**

**Radiant Pavé Pearly Set**  
GOLDTONE with pavé-accented pendant and pearly bead. 16½" L with 3½" extender. Pendant, 1½" L. Pierced drops, approx. 1" L.  
**109-470**  
reg. \$24.99

**\$19.99 the set**

necklace and earring sets

Maple Leaf/  
Goldtone  
**109-135**

Branch/  
SILVERTONE  
**109-101**

Petal/  
Goldtone  
**109-140**

**NEW**

**Pearlescent Season Leaf Necklace**  
Mother-of-pearl pendants with metal overlay. 16½" L with 3½" extender. Pendant, 1" L. Lobster closure. reg. \$12.99  
**\$9.99 each**

## mix master

Make an impact with a cool combo of bold blues and colorful accent stones.

**NEW**

**Blue Modern Mosaic Collection**  
Glass faceted and colored beads with goldtone metal accents.

**Necklace and Earring Set**  
33" L with 3½" extender. Lobster closure. Pierced drops, approx. 2½" L.

**109-169**  
reg. \$24.99

**\$19.99 the set**

**Bracelet**  
Stretches to fit most. **109-192**  
reg. \$16.99

**\$12.99**

necklace and earring set



## everyday elegance

Exquisite pieces exuding delicate pearly charm.



**Pearly Wrap Adjustable Pull-Cord Watch**  
Look of pearl bracelet watch with goldtone case, 27mm diam. Adjustable pull-cord fits most. Water-resistant to 3 ATM. **062-447**  
reg. \$46.99  
**\$36.99**

**Pure Grace Pearly 3-Piece Set**  
Goldtone with the look of pearls. Necklace, 16½" L with 3½" extender. Lobster closure. Pierced drops, 1½" L. Pull-cord bracelet stretches to fit most. **062-561**  
reg. \$22.99  
**\$16.99 the set**

necklace, earring and bracelet set

## here comes the sunflower

Bask in the warmth and radiant beauty of golden blooms.



**NEW**  
**Bloom and Glow Collection**  
Look of pearls and colored glass beads set in goldtone with accent stones.

**Pearly Necklace**  
16½" L with 3½" extender. Lobster closure. **109-541**  
reg. \$16.99  
**\$12.99**

**Pearly Bracelet**  
7¼" L with 1" extender. Lobster closure. **109-556**  
reg. \$12.99  
**\$9.99**

**Hoop Earrings**  
1½" L. Pierced. **109-704**  
reg. \$12.99  
**\$9.99**



**Azure Meadow Collection**  
Blue ceramic glass beads and accents set in silvertone.

**Layered Necklace**  
Two-row necklace. 16½" L with 3½" extender. Lobster closure. 061-068 reg. \$24.99

**\$19.99**

**Bracelet Set**  
Set of two stretch bracelets. Stretches to fit most. 061-072 reg. \$16.99

**\$12.99 the set**

**Stretch Ring**  
With reconstituted blue stone, 1" W. Stretches to fit most. 061-110 reg. \$12.99

**\$9.99**

set of 2 bracelets

## sky-blue hues

A beautiful blend of light and deep blues.

## glisten up

Gem-like clusters gleam with brilliant luster.

**Luxe Blue Flora Collection**  
Floral crystal design with aquamarine-, emerald- and sapphire-colored glass stones set in silvertone.

**Necklace and Earring Set**  
16½" L with 3½" extender. Pendant, 1½" L. Lobster closure. Pierced earrings, approx. ¾" L. 063-367 reg. \$19.99

**\$14.99 the set**

**Ring**  
1" W. 6 063-405 8 063-410 10 063-424 reg. \$12.99

**\$9.99**

necklace and earring set



**Pendant Necklace**

Goldtone chain with colored glass pendant. 24" L with 3½" extender. Pendant ranges from 1¼" L-2" L. Blue Horizon/Light Blue 061-326 Midnight Leaf/Black 061-144 Violet Dewdrop/Violet 061-182 Dusk Frame/Grey-Blue 061-130 reg. \$16.99 **\$12.99 each**

## singular statements

Captivating pendants with the look of natural stone.



## ahead of the curve

Intricate textures take classic hoops to the next level.



**Woven Glow Hoop Earrings**  
Intricate cutout texture. Approx. 1¼" L.

Goldtone 062-193  
Silvertone 061-819  
reg. \$12.99

**\$9.99 each**

**Modern Curve Hoop Earrings**  
With a ribbed wire look. Approx. 2" L.

Goldtone 061-350  
Silvertone 061-345  
reg. \$12.99

**\$9.99 each**

**Dotted Grace Hoop Earrings**  
Beaded texture. Approx. 1½" L.

Goldtone 061-622  
Silvertone 061-364  
reg. \$12.99

**\$9.99 each**



# bright outlook

Candy colors and luxe layers  
are all in the mix.



**Color Cascade  
Layered Collection**  
Three-row  
goldtone chain with  
multicolored beads,  
a paperclip chain  
and a blue pendant.  
Matching necklace  
and bracelet.

**Necklace and  
Earring Set**  
16½" L with 3½"  
extender. Pierced  
earrings, approx.  
½" L. **062-853**  
reg. \$24.99  
**\$19.99 the set**

**Bracelet**  
7¼" L with  
1" extender.  
**062-868**  
reg. \$16.99  
**\$12.99**

necklace and  
earring set



**Sleek Enamel CZ  
Collection**  
Colored enamel with  
accent CZ stones.

**Hoop Earrings**  
1½" diam. Pierced.  
Red/Goldtone **062-800**  
White/Goldtone **062-815**  
Mint/Silvertone **062-820**  
reg. \$16.99  
**\$12.99 each pair**

**Cuff Bracelet Set**  
Three-piece bracelet set  
matches hoop earrings.  
Open cuff fits most.  
**062-834**  
reg. \$23.99  
**\$17.99 the set**

set of 3

**Western  
Sunburst Collection**  
Textured antiqued  
silvertone with  
turquoise-colored  
accent stones.

**Necklace and Earring Set**  
16½" L with 3½"  
extender. Lobster  
closure. Pierced  
drops, 2" L.  
**915-826**  
reg. \$22.99  
**\$16.99 the set**

**Stretch Ring**  
Stretches to fit most.  
**915-830**  
reg. \$12.99  
**\$9.99**

necklace and  
earring set





**Luxe Eyeglass Chain**

Goldtone eyeglass chain with colored beads and pearlesque accents. With loops that slide onto temple pieces.

Approx. 31½" L.

Mist **062-796**

Pastel **062-739**

Pearly **062-762**

reg. \$12.99

**\$9.99 each**



# chic companions

Pretty pairings for your favorite eyewear.

**Keepsake Birthstone Locket**

Goldtone with birthstone-colored accent stone.  
16½" L with 3½" extender.  
Locket size, approx. ¾" diam.  
reg. \$16.99

**\$12.99 each**



January  
**911-209**



February  
**911-213**



March  
**911-490**



April  
**911-778**



May  
**912-152**



June  
**913-379**



July  
**913-766**



August  
**913-770**



September  
**913-804**



October  
**914-270**



November  
**914-284**



December  
**914-318**



**Cherished Moments Collection**  
Charms with sparkling accents, faceted beads and metal accents.

**Bracelet Set**

Two-piece sets. Stretches to fit most.

Star/Green/Goldtone **915-109**

Feather/Purple/Silvertone **915-223**

Evil Eye/White/Silvertone **915-371**

reg. \$16.99

**\$12.99 each set**

**Necklace**

16½" L with 3½" extender.

Luck/Green/Goldtone **914-834**

Family/Purple/Silvertone **914-490**

Love/Pink/Goldtone **914-519**

reg. \$19.99

**\$14.99 each**



### Abalone Gemscape Statement Collection

Mix of colored abalone, mother-of-pearl and gem-like stones set in antiqued goldtone.

#### Necklace

16½" L with 3½" extender. Lobster closure.

907-305

reg. \$32.99

**\$24.99**

### Blossom Breeze Collection

The look of mother-of-pearl set in goldtone.

#### Necklace

Glass pearlesque, blush and champagne faceted beads.

28" L with 3½" extender.

922-346

reg. \$24.99

**\$19.99**

### Moonlight Waves Collection

Semi-precious opal stones; blue, pearlesque and goldtone beads, plus charm with CZ stone accent.

#### Layered Necklace

Three-layer necklace. Shortest layer, 16" L; longest layer, 20½" with 3½" extender.

909-202 reg. \$24.99

**\$19.99**

#### Bracelet Set

Set of three. Stretches to fit most.

909-260

reg. \$19.99

**\$14.99**

the set

set of three bracelets

#### Earrings

Approx. 2" L.

Pierced.

907-362

reg. \$16.99

**\$12.99**

#### Bracelet

7¼" L with

1" extender.

Lobster closure.

907-310

reg. \$16.99

**\$12.99**

#### Interchangeable Earrings

Two-in-one. Rattan hoops with removable pearly flower motif.

Approx. 1½" L. Pierced.

922-365

reg. \$16.99

**\$12.99**

#### Bracelet

Cuff with

CZ stone.

Stretches to fit

most. 922-350

reg. \$16.99

**\$12.99**

### Seaside Collection

Starfish or shell motifs.

#### Starfish Watch

Leatherlike strap, 9" L. Goldtone case, 36mm diam. Water-resistant to 3 ATM.

Green 908-938

Blush 909-054

reg. \$39.99

**\$29.99 each**

#### Charm Beaded Bracelets

Sets of two.

Stretches to fit most.

Teal/Silvertone 909-111

Blush/Goldtone 909-126

reg. \$16.99

**\$12.99 each set**

#### Starfish Charm Drop Earrings

Goldtone with mother-of-pearl accent.

2½" L. Pierced.

909-183

reg. \$16.99

**\$12.99**

sets of two bracelets





**Charming Wishes Beaded Bracelet**  
Faceted round colored beads with goldtone charms accented with stones. Stretches to fit most.  
Blue 674-317    Pink 674-173  
Green 674-298    Purple 674-063  
reg. \$12.99  
**\$9.99 each**



**Delicate Garden Collection**  
Goldtone with multicolor and clear stones and opalescent beads.

**Ring Set**  
Set of three includes two solid goldtone rings (one of which is textured).  
Sizes:  
6 673-454  
8 673-511  
10 673-545  
reg. \$12.99

**\$9.99 the set**

**3-Piece Set**  
With pink and green flower motifs. Necklace, 16½" L with 3½" extender. Bracelet, 7½" L with 1" extender. Pierced drops, 1" L.  
673-420  
reg. \$22.99

**\$16.99 the set**

necklace,  
bracelet and  
earring set

**Spring Cocktail Jewel Ring**  
Faceted glass stone, ½" W, with crystal halo setting. reg. \$16.99  
**\$12.99 each**

|                                     |                                  |
|-------------------------------------|----------------------------------|
| Purple (pear-shaped)/<br>SILVERTONE | Green (emerald-cut)/<br>GOLDTONE |
| 6 675-280                           | 6 675-624                        |
| 8 675-347                           | 8 675-639                        |
| 10 675-571                          | 10 675-643                       |

|                                   |                               |
|-----------------------------------|-------------------------------|
| Blue (cushion-cut)/<br>SILVERTONE | Peach (oval-cut)/<br>GOLDTONE |
| 6 674-518                         | 6 675-677                     |
| 8 674-958                         | 8 675-681                     |
| 10 674-962                        | 10 675-696                    |



**Pearly Charm Initial Necklace**  
Goldtone chain with pearly pendant. 16½" L with 3½" extender. Pendant, 1" L.  
reg. \$9.99  
**\$7.99 each**



A 609-466 B 609-485 C 609-490 D 609-519



E 609-523 G 609-538 J 609-600 K 609-614 L 609-629



M 609-633 N 609-648 O 609-360 P 609-652



R 609-686 S 609-758 T 609-762 V 609-777

**Bejeweled Bliss Collection**  
Pastel-colored rectangular stones set in silvertone.

**Drop Earrings**  
Approx. 2¼" L.  
Pierced.  
672-190  
reg. \$12.99  
**\$9.99**

**Necklace**  
16½" L with 3½" extender.  
672-185  
reg. \$24.99  
**\$19.99**

**Bracelet**  
7¼" L with 1" extender.  
672-219  
reg. \$16.99  
**\$12.99**



**Seaside Charm Anklet Set**  
Two-piece goldtone sets with colored beads, charms and pearly accents. 9" L with 1" extender.  
reg. \$12.99  
**\$9.99 each set**

sets of 2





**NEW**

**Meadow Collection**  
Goldtone with  
soft-toned colored  
stones.

**Choker Necklace**  
Coiled beaded wire  
chain; one size fits  
most. 109-829  
reg. \$19.99

**\$14.99**

**Cluster Earrings**  
Glass and resin  
stones. Approx.  
2" L. Pierced.  
110-006  
reg. \$12.99

**\$9.99**



necklace and  
earring set

## stunning stones

Capture the timeless allure of gem-like tones.

**NEW**

**Classic Jewel Drop Necklace and Earring Set**

Warm-colored stones and glass pearly accents set in goldtone. 16½" L with 3½" extender. Necklace drop, approx. 3¼" L. Pierced drops, approx. ¾" L. 110-044  
reg. \$24.99

**\$19.99**



LIPLINERS

|   |   |   |   |   |   |
|---|---|---|---|---|---|
|  |  |  |  |  |  |
| Honey Peach<br>327-721  | Lava Red<br>327-740   | Passion Red<br>327-650  | Red Brick<br>330-451  | Chocolate<br>330-667  | Simply Spice<br>330-614   |
|  |  |  |  |  |  |
| Mystery Mauve<br>330-538  | Candy Apple<br>327-903  | Pink Bouquet<br>330-356   | Merlot<br>330-284   | Perfect Plum<br>330-887   | Au Naturel<br>330-318   |

EYELINERS

|   |   |   |   |  |  |
|---|---|---|---|--|--|
|    |    |    |    |   |   |
| CREAM<br>Emerald Green<br>334-332   | CREAM<br>Starry Night<br>334-347  | CREAM<br>Saturn Grey<br>334-328   | CREAM<br>Majestic Plum<br>334-313   | CREAM<br>Cosmic Brown<br>334-351   | CREAM<br>Blackest Black<br>334-366   |
|    |    |    |    |   |   |
| DIAMOND<br>Sterling<br>331-960  | DIAMOND<br>Teal Sparkle<br>331-606  | DIAMOND<br>Olive<br>331-940   | DIAMOND<br>Twilight Sparkle<br>331-553  | DIAMOND<br>Sugar Plum<br>331-625   | DIAMOND<br>Purple Rain<br>332-071  |
|   |   |   |   |  |  |
| DIAMOND<br>Smoky Diamond<br>331-280   | DIAMOND<br>Brown Sugar<br>331-568   | DIAMOND<br>Black Ice<br>331-610   | WATERPROOF<br>Blue Skies<br>334-237   | WATERPROOF<br>Brown Chocolate<br>332-124   | WATERPROOF<br>Raisin<br>332-200  |
|  |  |  |  |  |  |
| WATERPROOF<br>Seafoam Green<br>334-241  | WATERPROOF<br>Smoky Grey<br>332-162   | WATERPROOF<br>Blackest Night<br>229-491   | WATERPROOF<br>Midnight Blue<br>332-158  |  |  |

BROW DEFINERS

|   |   |   |   |   |   |
|---|---|---|---|---|---|
|  |  |  |  |  |  |
| Light Blonde<br>331-109   | Blonde<br>331-113   | Tawny<br>331-128  | Light Brown<br>331-151  | Dark Brown<br>331-147   | Brunette<br>331-242   |

fmg Glimmer Liners for Eyes, Brows and Lips  
Long-wearing. Retractable. Formulated without parabens, sulfates and talc. Each, .01 oz. net wt. reg. \$9

NOW \$2.99 each

Available in Lipliner, Brow Definer and Cream, Diamond and Waterproof Eyeliner. Excludes Fine Brow Pencil, Always On Point and Liquid Eyeliners.



© 2025 The Avon Company. All rights reserved.

CAMPAIGN 15, 2025  
THE AVON COMPANY  
165 BROADWAY, NY, NY 10006

avon.com

  
8 88761 73043 1  
Pk of 10 4764551

  
8 88761 73045 5  
Single 4764571

Brochure effective until \_\_\_\_\_



RETURN POLICY If you are not satisfied, return any item within 45 days. View Avon's full 45-Day Return Policy at avon.com/shipping-returns.