

# AVON

**+ FREE  
GIFT**  
DETAILS INSIDE

CAMPAIGN 18

*new Cashmere* **Soft Focus**  
*it's all a blur.*







focus on: **you**

Look effortlessly beautiful as  
you do with new flaw-blurring  
**SOFT FOCUS FOUNDATION  
AND CONCEALER** and a  
magical **MULTI-BALM**.



**FREE**

**fmg Oil Rewind Roller Ball**

WITH ANY TWO FACE MAKEUP PURCHASES,  
PAGES 4-11. \$19 VALUE. LIMITED QUANTITIES.

Sold separately on page 27.

Featured shades: Soft Focus Foundation  
in N1 and Full Coverage Concealer in C1.



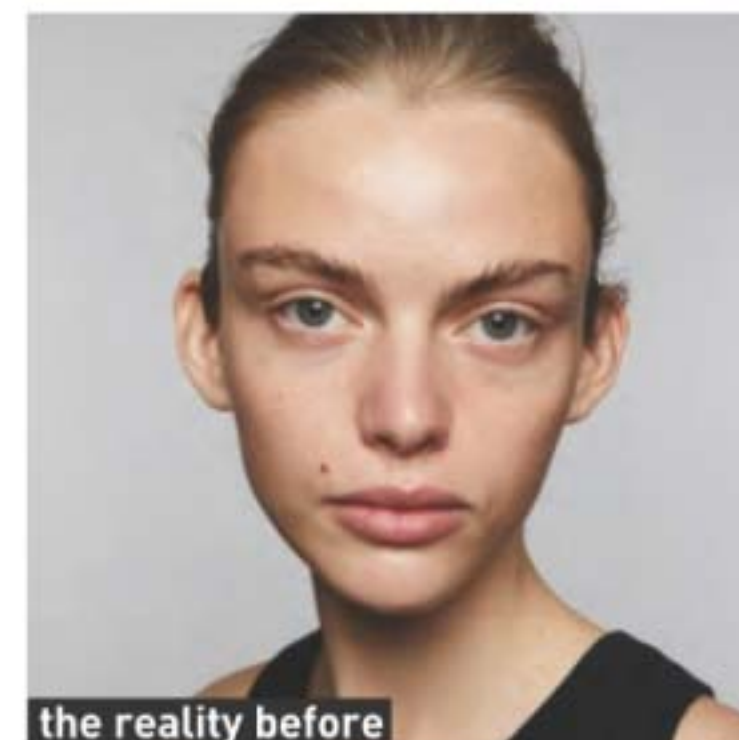
foundation that blurs



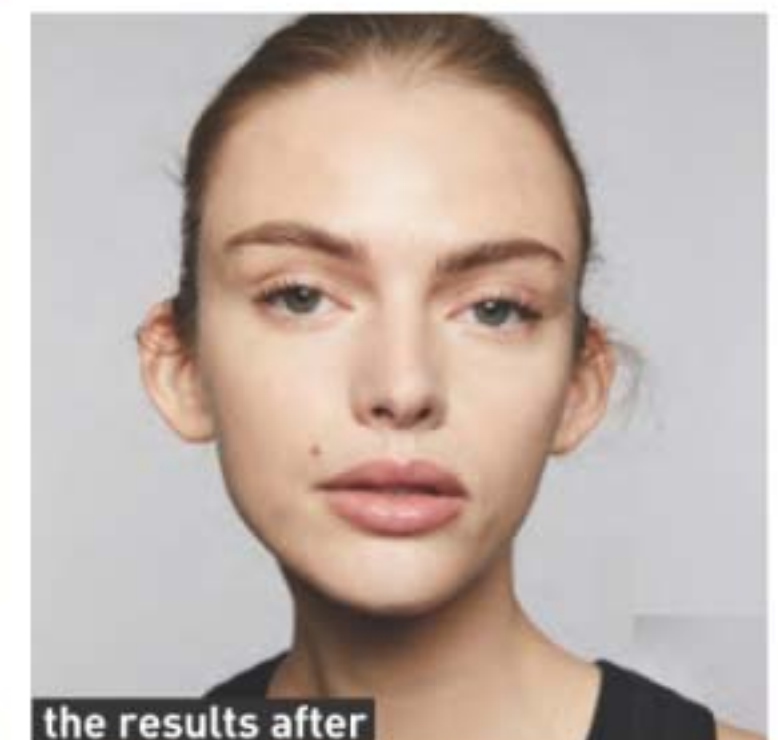
a balm that does it all



concealer that corrects



the reality before



the results after

Get stunning results with incredible ingredients, rich pigments and plush textures. With inclusive flexible shades and a variety of undertones, fmg Cashmere is luxury in the shade of you.





*focus on: blur*

Featured shade: W5.

- 24 hours of breathable wear
- Visibly blurs pores, fine lines and wrinkles
- Soft-focus satin finish
- Flexible shades to match any skin and undertone

**NEW**

### fmg Cashmere Soft Focus Foundation

Weightless hydrating formula with 2% niacinamide and oil-controlling silica powders. Helps to camouflage the appearance of imperfections and redness without transferring for smooth, even all-day complexion perfection. Blends effortlessly and never looks cakey. Buildable medium-to-full flexible coverage. Formulated without parabens and talc. 1.01 fl. oz. reg. \$25

**\$20**

**+ FREE OFFER**  
see page 2

Available in Cool (C), Neutral (N), Warm (W) and Warm Olive (WO) undertones.











N1	W1	N2	W2	C2	N3	N4	WO4	C4	N4.5	N5	W5
529-371	529-879	530-295	529-883	530-500	530-515	530-520	530-830	530-591	530-864	530-955	531-253

WO5	C5	N6	W6	N7	C7	W8	WO8	N9	W9	N10	W10
530-879	530-940	531-325	531-526	531-660	531-640	531-689	531-727	531-803	531-731	531-841	531-822





	
C1 531-856	N2 531-947
	
W02 532-010	C3 532-044
	
W3 532-116	N4 532-120
	
W5 532-211	N6 532-230
	
W7 532-719	N8 532-867

Available in Cool (C), Neutral (N), Warm (W) and Warm Olive (WO) undertones.

## focus on: flawless

Helps to camouflage the appearance of imperfections, dark circles and redness without settling or transferring.

**NEW**

### fmg Cashmere Soft Focus Full Coverage Concealer

24 hours of flawless, comfortable, breathable wear. Creamy, hydrating formula with 2% niacinamide, amino acids and lipids visibly blurs pores, fine lines and wrinkles. Blends effortlessly and never looks cakey. Buildable full coverage with a soft-focus, natural satin finish. Formulated without parabens and talc. .24 oz. net wt. reg. \$18

**\$14**

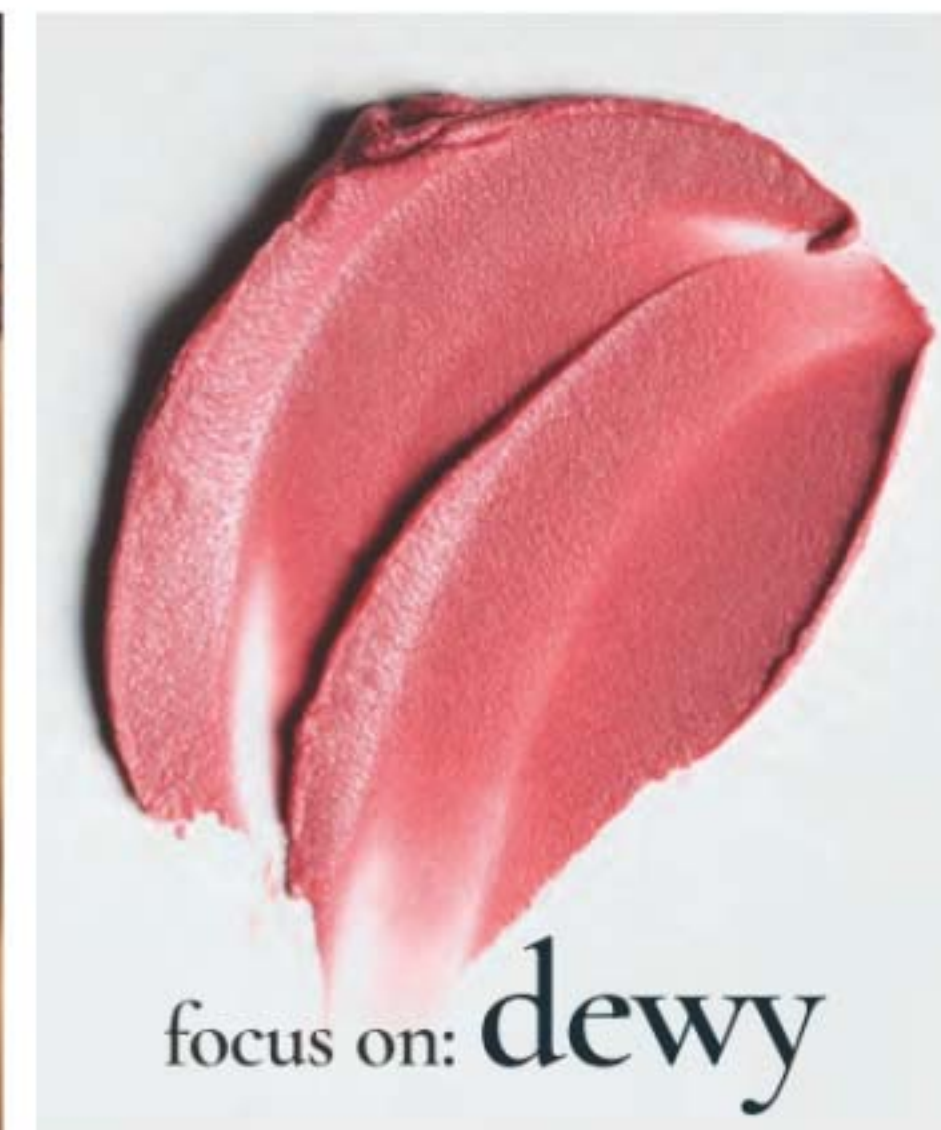
**+ FREE OFFER**  
see page 2



Featured shade: C1.



Featured shades: (on model) Beach Blush on lips and Cranberries on cheeks; (right) Bouquet.



focus on: dewy

Add a sheer wash of color to face and lips

**NEW**

**LIMITED EDITION**

### fmg Cashmere Multi-Balm

A blend of seven skin-loving peptides and moisturizing ingredients helps to visibly enhance, smooth and refine the complexion. Soft-focus tinted formula with light coverage complements your skin so the real you comes through. Dewy luminous finish with no greasy after-feel. Vegan.

Formulated without parabens and sulfates. .91 oz. net wt. reg. \$25

**\$20**

**+ FREE OFFER**  
see page 2





focus on: perfection



**FREE**  
fmg Oil Rewind  
Roller Ball  
Details on page 2

**fmg Cashmere Under Eye Primer**  
Helps diminish the look of dark circles and fine lines. With caffeine, green tea extract and a vegan alternative to collagen. Formulated without parabens, phthalates and fragrance. .317 oz. net wt. **010-429** reg. \$24 **\$19**



**fmg Cashmere Multi-Peptide Eyeshadow Primer**  
Keeps eyeshadow in place and intensifies the color. Skin-loving ingredients help to reduce the appearance of fine lines and visibly plump and strengthen the skin barrier. Sheer formula with Matrixyl 3000 peptide blend, hyaluronic acid, collagen and panthenol. Formulated without parabens and talc. .31 oz. net wt. **906-385** reg. \$24 **\$19**



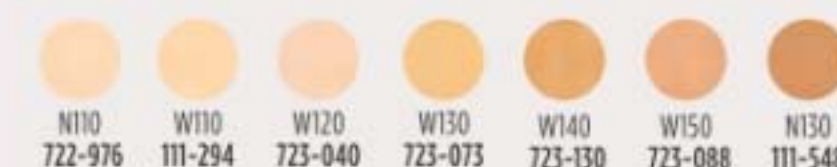
**fmg Cashmere Multi-Peptide Face Primer**  
Preps skin. Revitalizing ingredients help to smooth the appearance of fine lines and pores and visibly plump and strengthen the skin barrier. Sheer gel formula with Matrixyl 3000 peptide blend, hyaluronic acid, collagen and niacinamide. Formulated without parabens, talc and fragrance. 1 fl. oz. **739-284** reg. \$24 **\$19**



**fmg Cashmere Cream Concealer**  
Long-wearing formula helps to camouflage dark circles, acne and uneven skin tone. With hyaluronic acid and collagen. Full-coverage. Matte finish. Formulated without parabens, phthalates, talc and fragrance. .21 oz. net wt. reg. \$17 **\$13**



**fmg Cashmere Compact Powder Foundation\***  
Shine-control formula can be used wet or dry. Buildable medium-to-full coverage. Matte finish. With antioxidant botanicals. Sponge applicator. Formulated without parabens, phthalates and sulfates. .40 oz. net wt. reg. \$36 **\$24.50**



\*Available in Cool (C), Neutral (N) and Warm (W) undertones.





Featured shade:  
fmg Match Tint Radiant  
Tinted Moisturizer in  
Medium Deep.

### fmg Match Tint Radiant Tinted Moisturizer

Brightens skin tone, boosts moisture and blurs flaws. With passion fruit, chia and sunflower seed oils, and vitamin E and panthenol (provitamin B5). Buildable coverage. Radiant finish. Formulated without parabens. 1 fl. oz. reg. \$23

**\$14.99**

FULL RANGE  
OF FLEXIBLE SHADES!



### fmg Match Prime Face Perfector

Flaw-blurring mattifying oil-free formula visibly minimizes pores and fine lines. Sheer coverage. Matte finish. Formulated without parabens. 1 fl. oz. 103-744 reg. \$19

**\$14.99**



### fmg Match Airbrush Retouch Tinted Primer

Helps soothe and even skin tone and provides a lit-from-within dewy complexion. With skin-caring ferulic acid, panthenol (provitamin B5) and niacinamide. Formulated without parabens, phthalates, fragrance and talc. 1 fl. oz. reg. \$21

**\$16.99**



### fmg Match Filter Serum Tint Foundation

Instantly hydrates, blurs flaws and evens tone. With hyaluronic acid, vitamin E and berry complex. Buildable coverage. Demi-matte finish. Formulated without talc, parabens and fragrance. .31 oz. net wt. reg. \$21

**\$16.99**



### fmg Match Wand Correcting Stick

Neutralizes unevenness, brightens and color corrects. Long-wearing formula with shea butter and vitamin E. Formulated without parabens, phthalates and sulfates. .21 oz. net wt. reg. \$19

**\$14.99**



### fmg Match Dust Finishing Powder

Loose powder helps to set makeup and perfect skin. Translucent formula with light-diffusing ingredients known to help blur the appearance of imperfections and silica to help control shine. Goes on smooth and provides a naturally radiant finish. Sheer to light coverage. Formulated without parabens, phthalates, sulfates, fragrance and talc. Vegan. .16 oz. net wt. reg. \$20

**\$15.99**



### fmg Match Set Finishing Powder

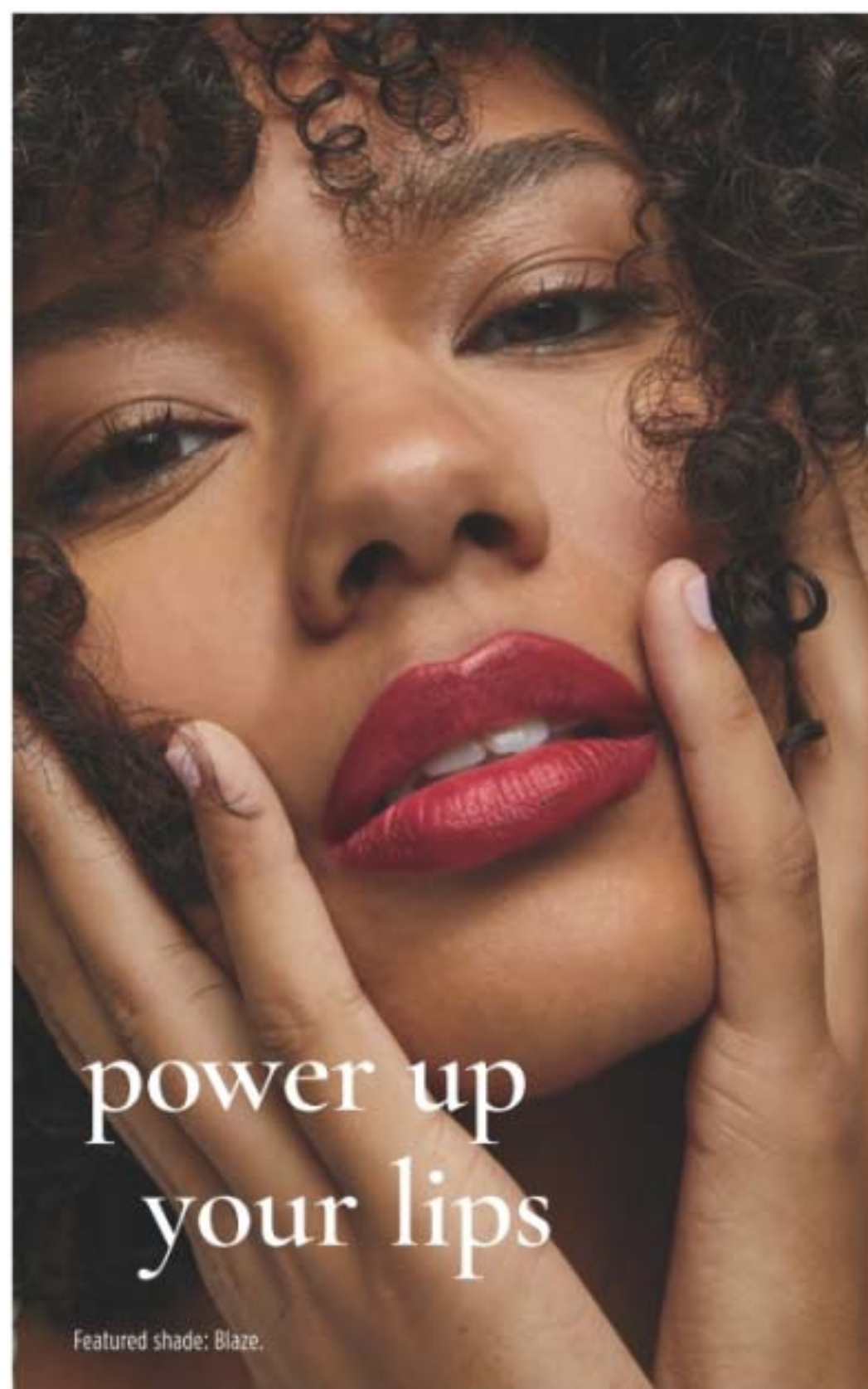
Loose powder blends effortlessly, creating an invisible veil that sets makeup for lasting wear. Translucent formula infused with light-diffusing ingredients known to help blur the appearance of imperfections and silica to help control shine. Goes on smooth and provides a soft matte finish. Formulated without parabens, phthalates, sulfates, fragrance and talc. Vegan. .16 oz. net wt. reg. \$20

**\$15.99**



**FREE**  
fmg Oil Rewind  
Roller Ball  
Details on page 2.





Featured shade: Blaze.



**fmg Glimmer Lipstick**  
Lightweight formula with pomegranate extract. Buildable coverage. Available in **Matte**, **Satin** or **Shimmer** finishes. Formulated without parabens and sulfates. .10 oz. net wt. reg. \$15  
**\$11.49 each**

**SATIN**

Blaze 896-880	Wild Cherry 449-708	Hibiscus 898-021
Poppy 897-651	Aster 448-769	Desert Moon 449-803
Twilight 449-822	Cyclone 890-566	Sierra Sunset 890-805
Plum Blossom 449-765	Dahlia 726-350	Rose Angel 897-939
Wildflower 898-040	Eclipse 448-740	Tulip 449-712
Wildrose 898-533	Stellar 726-550	Honeyflower 726-531
Morning Glory 449-750	Equinox 449-818	Luna 895-170
Aurora 726-584	<b>SHIMMER</b> Constellation 449-731	

**GO. by Glimmer  
Lacquered Lip Gel**

Ultimate fusion of shiny gloss and tinted lip color in one. Non-sticky formula with gel-like texture glides on and helps to leave lips feeling soft and cushioned. Infused with a Super-Fruit Extract Complex that includes noni fruit, passionflower and amla fruit extract. Buildable coverage with a glossy finish. Formulated without parabens, talc, sulfates, phthalates and mineral oil. .14 oz. net wt. reg. \$17

**\$12.99**

Soft 922-327	Fruity Floral 922-312	Whisper Pink 750-114	Sunset Rose 750-205
Waffle Cone 750-023	Orchid Bloom 750-320	Seeing Red 750-391	Currant Crush 750-478



**Best of  
K-Beauty**



**GO. by Glimmer  
Whipped Lip & Cheek Tint**

Ultimate multi-tasker delivers beautiful color to lips and cheeks. With apple fruit extract, an antioxidant known to help promote smooth, glowing skin. Full pigmented coverage with a velvety matte powder finish. Formulated without parabens, talc, sulfates, phthalates and mineral oil. .14 oz. net wt. reg. \$18

**\$13.99**

Velvet Vanilla 922-293	Cherry Cocktail 922-289	Frozen Pink 749-994	Blushed 749-870
Hibiscus Tea 750-019	Peony 749-865	Flora 749-956	Jam 749-850



**NEW**

**fmg LOVE Lip Butter Crème**

Ultra-creamy yet weightless formula, infused with a nourishing blend of jojoba, sweet almond, apricot, olive and evening primrose oils, mango extract and shea butter, melts into lips and drenches them in moisture, leaving them buttery soft with a kiss of glossy color. Click pen applicator. Vanilla scented. Formulated without parabens, gluten, talc, sulfates and phthalates. .10 oz. net wt. reg. \$19

**\$14.99 each**



**fmg LOVE Lip Butter**

Sheer, high-shine formula with cupuaçu seed butter, mango extract, and apricot kernel and olive fruit oils. Buildable coverage. Vanilla scented. Formulated without parabens, sulfates and phthalates. .09 oz. net wt. reg. \$19

**\$14.99**



**fmg Glimmer Lip Conditioner**

Leaves dry, cracked lips feeling soft and smooth. With mango seed butter, vitamin E, and jojoba and sunflower seed oils. Formulated without parabens, sulfates, phthalates and talc. .12 oz. net wt.

**794-578**  
reg. \$12

**\$9.49**



**fmg Glimmer Birthday Balm Lip Crayon**

Sheer, soft shine formula with non-GMO shea butter. Formulated without parabens and gluten. .1 oz. net wt. reg. \$17

**\$12.99**

**ANY 2 FOR \$18**

mix or match,  
any 2 for discount to apply.



Featured shade: Persistent.

**MATTITUDE IS BACK**

**NEW & IMPROVED TRANSFER-RESISTANT FORMULA**

**fmg Glimmer Mattitude Liquid Lipstick**

Lock in vivid, saturated color with a comfortable, non-drying, transfer-resistant formula that wears all day without fading or feathering. With vitamin E and a blend of olive and sunflower oils to help smooth and soften lips. Glides on effortlessly, delivering full coverage in one swipe with a velvety soft matte finish. Formulated without parabens, sulfates and phthalates. Vegan. .12 fl. oz. reg. \$18

**\$13.99**





# all eyes on you



## fmg LOVE at 1st Sight Eyeshadow Palette

Nine buildable matte and shimmer shades create depth and dimension. Versatile formula with antioxidant vitamin E blends seamlessly. Formulated without parabens, phthalates, talc and fragrance. .23 oz. total net wt. **786-076** reg. \$28

**\$20**

## fmg Glimmer Liquid Eyeshadow

Silky lightweight formula glides on effortlessly for ultrafine pearly color that lasts all day. Water-resistant. Will not smudge or crease. No messy fallout. Buildable coverage from a sheer wash of soft sateen sheen to full-on shimmery wow. Formulated without parabens, phthalates, sulfates and talc. Available in Matte Sateen or Shimmer finish. .07 fl. oz. reg. \$14

**\$10.99 \$7.99**



## BEST-SELLING SHIMMER SHADES ARE BACK!

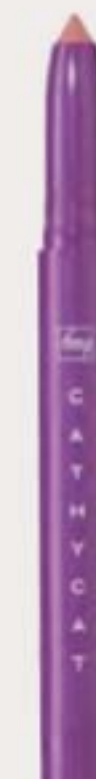
SHIMMER Pink Topaz 324-608	SHIMMER Crystal Lilac 324-593	SHIMMER Rose Gold 324-521	SHIMMER Fool's Gold 324-517	SHIMMER Diamond Dust 324-574
MATTE SATEEN Sunstone 324-392	MATTE SATEEN Moonstone 324-612	MATTE SATEEN Citrine 324-631	MATTE SATEEN Tiger's Eye 324-646	

## fmg CathyCat Shadow Gaze Matte Color Stick

Long-wearing formula will not budge or smudge. Buildable and blendable coverage. Matte finish. Formulated without parabens and fragrance. .0476 oz. net wt. reg. \$19

**\$14.99 \$10.99**

Berry 958-619	Azure 959-213	Mauve 958-331	Rosewood 958-547
Taupe 958-126	Espresso 958-896	Buff 956-912	



## fmg CathyCat Nine Lives Precision Liquid Eyeliner

Slim-tip brush delivers a precise line of water- and sweat-resistant color that will not skip, tug or smudge. Formulated without parabens, sulfates, phthalates and talc. .068 fl. oz.

**Blackest Black 800-829** reg. \$18

**\$14.99 \$10.99**



## fmg Glimmer Eyeshadow Quad

Soft powder formula lasts all day. No messy fallout. Buildable coverage. Formulated without parabens and fragrance. Available in Multi and all Matte finishes. .21 oz. total net wt. reg. \$18

**\$13.99 \$10.49**

MULTI Mistress 883-902	MULTI Goddess 901-330	MULTI Muse 880-459	MULTI Minx 885-738	MULTI Darling 880-789
MULTI Maven 884-750	MULTI Temptress 884-731	MULTI Idol 900-975	MULTI Vixen 901-474	MULTI Siren 901-493
MATTE Calypso 741-261	MATTE Tigress 741-333	MATTE Bombshell 741-170	MATTE Icon 741-439	

For Multi Quad finishes, visit Avon.com.

**GET AN EXTRA 25% OFF** Final prices as shown.



# line & define

**fmg Glimmer Liners for Lips, Eyes and Brows**  
Long-wearing. Retractable. Formulated without parabens, sulfates and talc. Each, .01 oz. net wt. reg. \$9

**\$4.49 each**

## LIPLINERS

 Honey Peach 327-721	 Lava Red 327-740	 Passion Red 327-650	 Red Brick 330-451
 Chocolate 330-667	 Simply Spice 330-614	 Mystery Mauve 330-538	 Candy Apple 327-903
 Pink Bouquet 330-356	 Merlot 330-284	 Perfect Plum 330-887	 Au Naturel 330-318

## EYELINERS

 CREAM Emerald Green 334-332	 CREAM Starry Night 334-347	 CREAM Saturn Grey 334-328	
 CREAM Majestic Plum 334-313	 CREAM Cosmic Brown 334-351	 CREAM Blackest Black 334-366	
 DIAMOND Sterling 331-960	 DIAMOND Teal Sparkle 331-606	 DIAMOND Olive 331-940	 DIAMOND Twilight Sparkle 331-553
 DIAMOND Sugar Plum 331-625	 DIAMOND Purple Rain 332-071	 DIAMOND Smoky Diamond 331-280	 DIAMOND Brown Sugar 331-568
 DIAMOND Black Ice 331-610	 WATERPROOF Blue Skies 334-237	 WATERPROOF Raisin 332-200	 WATERPROOF Brown Chocolate 332-124
 WATERPROOF Seafoam Green 334-241	 WATERPROOF Smoky Grey 332-162	 WATERPROOF Blackest Night 229-491	 WATERPROOF Midnight Blue 332-158

## BROW DEFINERS

 Light Blonde 331-109	 Blonde 331-113	 Tawny 331-128
 Light Brown 331-151	 Dark Brown 331-147	 Brunette 331-242



**fmg Glimmer Liquid Color Eyeliner Pen**  
Felt-tip applicator glides on smoothly, with precise application. Highly pigmented, lightweight formula. Smudge-, transfer- and sweat-proof.\* Formulated without parabens, talc, mineral oil, phthalates and fragrance. .04 fl. oz. reg. \$13

**\$10.99**

\*Based on Consumer Home Use Test Study of 62 applicants.

 Chestnut 519-503	 Indigo 519-499
 Forest 519-518	 Smoked 519-537



**fmg Glimmer Liquid Eyeliner**  
Quick-drying, long-lasting formula. Transfer-, sweat- and waterproof. Matte finish. Formulated without parabens, phthalates and fragrance. .037 fl. oz. **Blackest Black 354-380** reg. \$13

**\$10.99**



**fmg Glimmer Always On Point Eyeliner**  
Built-in sharpener. Smudge- and waterproof. Formulated without parabens, sulfates and talc. .01 oz. net wt. **Black 016-389** reg. \$10

**\$7.99**

## MICRO TIP

creates realistic hair-like strokes



## MATTE FINISH

buildable, long-wearing, creamy, yet firm formula

## SPOOLIE

blends and grooms for a natural look



**fmg Glimmer Fine Line Brow Pencil**  
Sweat- and smudgeproof, yet easy to remove.\*\* Retractable. Vegan. Formulated without parabens, talc, sulfates, fragrance and mineral oil. .0032 oz. net wt. reg. \$10

**\$6.99**

 Blonde 888-206	 Soft Medium 888-230	 Medium 888-278	 Dark 888-282
---	--	---	---

\*\*Based on Consumer HUT Study of 22 applicants.





**fmg LOVE Hi-Brow Tinted Brow Gel**  
24-hour water-resistant formula with heart-shaped fibers, clay and vitamin E. Won't clump, smudge or flake. Formulated without parabens, phthalates and fragrance. .11 fl. oz. reg. \$19  
**\$14.99**



**fmg Cashmere Eyelash Primer**  
Nourishing formula with biotin and collagen amino acids helps to keep lashes looking healthy and strong. Maximizes the performance of any mascara for gorgeous, lush lashes. Formulated without parabens, sulfates and talc. .35 fl. oz. **324-369** reg. \$24  
**\$19**



**fmg Cashmere Ultimate Volume Mascara**  
Volumizing formula with biotin and a vegan alternative to collagen helps to keep lashes looking healthy and strong. Glossy black finish. Formulated without parabens, sulfates and talc. .27 fl. oz. **Rich Black 153-736** reg. \$24  
**\$19**



**fmg LOVE Hi-Brow Sculpting Brow Gel**  
Clear formula with aloe and hyaluronic acid. Flake-proof. Formulated without parabens, phthalates and fragrance. .11 fl. oz. **536-695** reg. \$19  
**\$14.99**



**fmg Glimmer SuperShock Volumizing Mascara**  
Lash-building formula with plumping fibers. High-gloss finish. Won't clump, smudge or flake. Formulated without phthalates and fragrance. .338 fl. oz. **Black 698-829** reg. \$13  
**\$10.99**



**fmg LOVE at 1st Lash Waterproof Mascara**  
Lash-loving, waterproof formula with volumizing and lengthening fibers. With Lashrez, olive oil and vitamin E. Won't clump, smudge or flake. Formulated without parabens and sulfates. .29 fl. oz. **Blackest Black 480-953** reg. \$19  
**\$14.99**



**fmg LOVE at 1st Lash Mascara**  
Lash-loving volumizing and lengthening fibers. With lycopene, olive oil and vitamin E. Won't clump, smudge or flake. Formulated without parabens and sulfates. .3 fl. oz. **Blackest Black 698-670** reg. \$19  
**\$14.99**



**fmg Glimmer SuperExtend Nourishing Mascara**  
Long-wearing lengthening formula with vitamin E, argan and coconut oils. Won't clump, smudge or flake. Formulated without sulfates and talc. .237 fl. oz. **Black 698-848** **Brown Black 698-852** reg. \$13  
**\$10.99**



**fmg Glimmer Wash-Off Waterproof Mascara**  
Waterproof volume. Washes off easily with soap and water. Formulated without phthalates, fibers and fragrance. .21 oz. net wt. **Black 535-560** reg. \$13  
**\$10.99**





at first blush...

Featured shade:  
fmg Glimmer Be Blushed  
Cheek Color in Tropical Peach

**fmg Glimmer Be Blushed Cheek Color**  
Creamy formula with vitamin E. Buildable coverage. Dewy finish. Formulated without parabens, phthalates and fragrance. .14 oz. net wt. reg. \$17

**\$12.99**



Tropical Peach

Petal Pink

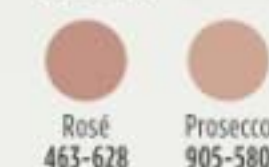
**fmg Glimmer Powder Blush**  
Weightless formula with ultrafine pearl and vitamin E. Buildable coverage. Matte finish. Formulated without parabens, phthalates and fragrance. .28 oz. net wt. reg. \$15

**\$11.99**



**fmg Glimmer Powder Illuminator**  
Lightweight buildable formula with vitamin E. Radiant finish. Formulated without parabens, phthalates and fragrance. .35 oz. net wt. reg. \$15

**\$11.99**



Rosé



**fmg Glimmer Lip & Cheek Stain**  
Highly pigmented, long-wearing gel formula. Brush-tip applicator. Transfer-proof. Formulated without parabens and fragrance. .19 fl. oz. reg. \$17

**NOW \$9.49**



**fmg LOVE Glow Balm Duo Illuminating Stick**  
Dual-ended for highlighting and definition. Sheer formula with blend of pomegranate extract, mango and shea butter, vitamins E and C, and avocado oil. Soft, pearlescent finish. Formulated without parabens, phthalates and fragrance. .28 oz. total net wt. 924-573 reg. \$22

**\$16.99**







## out of this world nails

**fmg Glimmer Nail Lacquer**  
Nail-strengthening, long-wearing, no-chip formula. Gel-like cushion texture. Formulated without parabens and phthalates. .4 fl. oz. reg. \$12

**\$9.49 \$6.99 each**

**SHIMMER**  
Carnation Constellation  
042-897

**SATIN**  
AstroNautical Blue  
042-878

**SATIN**  
Magenta Retrograde  
042-882

**SATIN**  
Full Moon Flush  
018-730

**SATIN**  
Night Sky Berry  
602-658

**SATIN**  
High Magnitude Mauve  
018-840

**SATIN**  
Supernova Red  
018-267



Carnation Constellation

AstroNautical Blue

Magenta Retrograde

**LIMITED EDITION**  
**fmg Glimmer Glitz A-Peel Nail Lacquer**  
Glittery quick-dry formula. No harsh acetone or remover needed. Glossy finish. Formulated without parabens, toluene, formaldehyde and camphor. .4 fl. oz. reg. \$13

**\$9.99 \$7.49**

**Leading Lady**  
538-430

**Best in Class**  
538-459

**Newlywed**  
538-425



just "peels" off  
for fuss-free  
removal.



**fmg Glimmer Nourished Nail Cuticle Oil**  
Nourishing treatment for dry, damaged cuticles. Fortified with safflower oil to help restore and condition nails and cuticles. Formulated without phthalates, sulfates, parabens, toluene, formaldehyde and camphor. .4 fl. oz. 612-894 reg. \$14  
**\$10.99**



**fmg Glimmer Nail Base & Top Coat**  
Two-in-one base and top coat primes and shields nails. Glossy finish. Formulated without parabens and phthalates. .4 fl. oz. 018-161 reg. \$12  
**\$9.49 \$6.99**



**fmg Glimmer Nail Air Dry Drops**  
Need a fast finish? Accelerate your dry time with just a drop or two! Helps prevent smudges and nicks. Formulated without phthalates, sulfates, parabens, toluene, formaldehyde and camphor. .4 fl. oz. 612-913 reg. \$14  
**\$10.99**



**fmg Glimmer Nail Lacquer Eraser Pen**  
For a clean and perfected mani. Won't dry out nails or cuticles. Formulated without parabens and phthalates. .135 fl. oz. 704-443 reg. \$12  
**\$9.49 \$6.99**





## brush with greatness

### fmg Complexion Blending Brush

Dual-ended: Rounded buffing foundation brush and concealer brush. 6½" L. Synthetic bristles. 933-210 reg. \$24

**\$18.99**

### fmg Precision Eye Brush

Dual-ended: Pointed pencil brush and angled eyeliner brush. 5¼" L. Synthetic bristles. 933-187 reg. \$17

**\$12.99**

### fmg Eyeshadow Blending Brush

Dual-ended: Crease brush and allover eyeshadow brush. 6" L. Synthetic bristles. 933-320 reg. \$17

**\$12.99**

### fmg Blush & Contour Brush

Dual-ended: Angled contour brush and tapered, oval blush brush. 7¼" L. Synthetic bristles. 933-259 reg. \$23

**\$17.99**



### fmg Kabuki Brush

Soft, angled brush for pressed or loose powder formulas. Retractable with protective cap. 3¾" L x 1" diam. Synthetic bristles. 732-370 reg. \$20

**\$15.99**



### fmg Flawless Complexion Sponge

Dual-ended: Allover makeup application rounded side, and contouring and concealing flat sides. 2½" L x 1½" W. 100% PU, latex-free. 140-160 reg. \$11

**\$8.49**



### fmg Oil Rewind Roller Ball

Reusable 360° rotating volcanic-stone roller instantly absorbs oil and grease without disturbing makeup. 3" L x 1" W. Plastic handle, protective cap. Imported. 508-294 reg. \$19

**\$14.99**



### fmg Waterproof Lip & Eye Makeup Remover

Dual-layer oil and water makeup remover leaves skin fresh and clean. With centella asiatica and lavender extracts. Formulated without mineral oil, tar, talc and parabens. 3.7 fl. oz. 352-243 reg. \$12

**\$8.49**



### fmg Express Makeup Brush Wash

Easily removes dirt, oil and makeup. With aloe vera and green tea extract. Formulated without alcohol and sulfates. 1 fl. oz. 141-368 reg. \$15

**\$11.99**



### fmg Moisturizing Eye Makeup Remover Lotion

Cleans, refreshes and moisturizes as it whisks away eye makeup. Formulated without parabens, sulfates and phthalates. 2.5 fl. oz. 037-978 reg. \$8

**\$6.49**



### fmg Makeup Remover Wipes

With vitamin E and aloe, chamomile, cucumber, marshmallow root and oat extracts. Resealable pack of 24 wipes. Formulated without parabens, gluten, sulfates, phthalates and fragrance. 333-867 reg. \$12

**\$8.49**



### Daily Beauty Tools Tweezers

Amp up your beauty routine with angled tweezers. Stainless steel. 3½" L. 747-020 reg. \$4

**\$2.99**



### fmg Set & Fix Spray

Controls oil and helps keep makeup smudge-proof. Non-greasy, non-sticky. Formulated without parabens, sulfates, phthalates and silicones. 1.7 fl. oz. 416-707 reg. \$15

**\$10.99**



### fmg Unready Makeup Remover Cloth

Dual-sided. Reusable and travel-friendly. 100% polyester. 9¼" sq. Machine wash and dry. Imported. 230-176 reg. \$15

**\$11.99**





# SKIN CARE

Healthy-looking, hydrated skin starts here. Address your skin care concerns with our high-performance treatments.



**Anew Vitamin C  
Brightening Eye Cream**  
**FREE**  
WITH ANY \$30 PURCHASE  
PAGES 29-35. \$34 VALUE.  
LIMITED QUANTITIES.  
Also sold separately.

**DIMINISHES**  
the look of dark circles

**Anew Vitamin C  
Brightening Eye Cream**  
Under-eye area looks  
brighter and more  
even-toned. .5 fl. oz.  
953-602 reg. \$34  
~~\$23.99~~ **\$17.99**

AVON  
**ANEW**  
VITAMIN  
**C**  
BRIGHTENING  
EYE CREAM  
CRÈME ILLUMINATRICE  
POUR LES YEUX

**GET AN EXTRA 25% OFF** Final price as shown.



### RESCUES skin from the look of drabness

#### Brightening Serum

Skin is visibly energized and brightened with the power of 10% pure vitamin C. 1 fl. oz.

522-066 reg. \$44

~~\$27.99~~ **\$20.99**



### PEELS away dullness

#### Anew Vitamin C Peel Pads

With PHA and pineapple extract, vitamin C, panthenol and glycerin. Exfoliates and helps visibly brighten.

4.3 fl. oz. 70 pads.

169-143 reg. \$28

~~\$22.99~~ **\$16.99**



### ONE SMOOTH KISS for healthy-looking lips

#### Anew Vitamin C Antioxidant Lip Treatment

Nourishes lips with vitamins C and E. .13 oz. net wt. 784-547 reg. \$14

~~\$9.99~~ **\$7.49**



### ILLUMINATES as it moisturizes and blurs imperfections

#### Anew Vitamin C Illuminating Priming Moisturizer

With skin-smoothing silicones. Use after Brightening Serum.

Wear alone or under makeup. 1.7 fl. oz.

914-671 reg. \$34

~~\$23.99~~ **\$17.99**



# triple power:

antioxidants 7% vitamin C, 2% ferulic acid and vitamin E



### TARGETS dark spots, discolorations and dullness

Anew Vitamin C  
Targeted  
Skin Brightener  
Suitable for sensitive  
skin. 0.5 fl. oz.  
169-177  
reg. \$34

~~\$23.99~~ **\$17.99**





# every body:

Get ready to look luminous all over with the Super C team! We've got you covered.

**MELTS INTO BODY** for a visibly smooth, radiant finish

**Anew Vitamin C Dry Body Oil**

Soothing sunflower seed and jojoba oils help keep skin feeling supple. 3.4 fl. oz. **074-432** reg. \$34

**\$19.99 \$14.99**

**SEE RADIANCE RESTORED** smooths on like butter

**Anew Vitamin C Nourishing Body Butter**

With hydrating shea butter and niacinamide, plus vitamins C and E to help restore radiance. Fruity-floral and citrus scent. 7.8 fl. oz. **443-767** reg. \$32

**\$20.99 \$15.49**

**SUPER EXFOLIATOR** oh, glow on!

**Anew Vitamin C Glow Body Scrub**

Sugar-based formula with pineapple and papaya enzymes and coffee seed extract exfoliates dry, dull skin. Citrus scent. 9 oz., net wt.

**443-752** reg. \$36

**\$20.99 \$15.49**



See page 29. **FREE GIFT + AN EXTRA 25% OFF** Final prices as shown.



### HYDRATING SERUM + NIGHTTIME MOISTURIZER

#### Anew Platinum Night Cream

Visibly resculpts sagging jawline and dramatically reduces the look of deep horizontal neck lines. 1.7 oz. net wt.

#### Avon Solutions Nurtura Serum

With skin-nourishing ingredients known to help combat dryness and flakiness, and help hydrate. 1 fl. oz.

**BOTH FOR \$30**

**\$60 VALUE**

397-980



### BRIGHTENING SERUM + NIGHTTIME MOISTURIZER

#### Avon Solutions Banishing Serum

Contains arbutin, niacinamide and licorice extract, ingredients known to help improve the appearance of dark spots and uneven skin tone. 1 fl. oz.

#### Anew Ultimate Multi-Performance Night Cream

It works while you sleep to revive and recreate the look of youthful skin. 1.7 oz. net wt.

**BOTH FOR \$30**

**\$60 VALUE**

397-961



### WRINKLE CORRECTOR + EXFOLIATOR

#### Isa Knox Anew Clinical Revitalize & Reveal

**Advanced Wrinkle Corrector**  
In just two weeks, wrinkles appear reduced. 1.7 fl. oz.

#### Isa Knox Anew Clinical Revitalize & Reveal

**Extra Strength Retexturizing Peel**  
Results similar to a 35% pro glycolic peel.\*  
30 fragrance-free pads. 2" diam.

**BOTH FOR \$30**

**\$80 VALUE**

397-995

\*In 6 out of 8 attributes tested over a 7-week period.



# squeeze the day

Pick your pairs, then brighten up your eyes with a vitamin C-infused eye cream—or add any of our vitamin C formulas [pages 29–33]—to your regimen and brighten up your day!



### CLEANSER + FIRMING CREAM

#### Rice Water Bright Mild Cleansing Water

Removes makeup and impurities via the micellar method, so no need to rinse off! Tired-looking, dull skin appears radiant and revitalized. 16.9 fl. oz.

#### Isa Knox Anew Clinical Collagen Booster Firming Cream

With moisturizing and skin-plumping niacinamide and squalane. Hygienic, airless pump. 1.7 fl. oz.

**BOTH FOR \$30**

**\$63 VALUE**

398-001





93% of women believe it dramatically improves skin's overall appearance.\*



**Anew Power Serum**  
Visibly improves wrinkles, radiance, firmness and texture. Use AM and PM after cleansing, before moisturizing. 1 fl. oz. 838-047 reg. \$45  
**\$29.99**

\*Based on those who expressed an opinion in a consumer-perception study.



our highest sun protection for face and body



**Isa Knox Anew Solaire Everyday Face Protection Lotion Broad Spectrum SPF 50**  
1.7 fl. oz. 911-400 reg. \$32  
**\$25.99**

**Isa Knox Anew Solaire Active Face & Body Protection Lotion Broad Spectrum SPF 50**  
2.7 fl. oz. 154-948 reg. \$38  
**\$29.99**

**Isa Knox Anew Solaire Everyday Mineral Face Protection Cream Broad Spectrum SPF 50**  
Lightweight formula with zinc oxide. Suitable for sensitive skin. Water-resistant (40 minutes). 1.7 fl. oz. 911-467 reg. \$32  
**\$25.99**





## BROAD-SPECTRUM SUN PROTECTION

LEAVES NO  
VISIBLE  
WHITE CAST

PLUS...

**HYALURONIC ACID**  
helps skin feel  
plump and supple

**CERAMIDES**  
help protect the  
skin barrier

**CENTELLA ASIATICA**  
helps hydrate  
and soothe skin

**Beyond Glow Sun Milk SPF 50**  
With higher SPF. Blends  
seamlessly. Perfect for all skin  
tones. Formulated without  
fragrance. 1.7 fl. oz. 929-541  
reg. \$38  
**\$29.99**

**Beyond Glow Sun Moisturizer  
SPF 30**  
For face and body. Blends  
seamlessly. Perfect for all skin  
tones. Formulated without  
fragrance. 1.7 fl. oz.  
927-773 reg. \$38  
**\$29.99**

# sun care that doubles as skin care

NEW BEYOND GLOW SUNSCREENS



SPF 50:  
rich milky  
texture for  
extra care



SPF 30:  
lightweight  
texture for  
everyday wear

Best of  
K-Beauty



## in one use

relieves the look of redness caused by dryness<sup>†</sup>

### Beyond Glow Centella Redness Relief Serum

A soothing gel serum with centella asiatica, panthenol and glycerin to help relieve the appearance of redness. 1 fl. oz. 350-399 reg. \$34

**\$25.99**

Best of  
K-Beauty



BEFORE\*



AFTER

\*Subject's face exposed to heat for 20 minutes to induce skin irritation.

†Based on a consumer-perception study of 32 people.

\*\*Based on a consumer-perception study of 31 people.

††Based on a clinical study of 32 people.

## BEYOND GLOW CENTELLA COLLECTION

SKIN CARE



96%  
said skin  
feels  
instantly  
cooled\*\*

**Beyond Glow Centella Cooling Toner**  
Refreshes and moisturizes irritated skin caused by dryness in seconds. 6.7 fl. oz. 350-403 reg. \$25  
**\$19.99**

in 6 days  
skin barrier improved<sup>††</sup>

**Beyond Glow Centella Soothing Cream**  
Moisturizes and reduces the look of redness caused by dryness. Hypoallergenic and noncomedogenic. 2.7 fl. oz. 350-422 reg. \$34  
**\$25.99**



## Nourish

**Beyond Glow  
Lipcerin Intensive  
Nourishing  
Lip Care**  
reg. \$25  
**\$17.99**



Nourishing  
052-325

An intensive, glistening formula that nourishes dry lips with moisture. With a plumping peptide, moisture-enhancing glycerin and smoothing shea butter. Clear finish. .5 fl. oz.

## Plump

**Beyond Glow  
Lipcerin Plump  
and Cool Lip  
Care**  
reg. \$25  
**\$17.99**



Plump and Cool  
052-344

An intensely moisturizing, glistening formula that visibly plumps and softens lips. With cooling menthol for an instant visible increase in lip volume. Clear finish. .5 fl. oz.

## Tint

**Beyond Glow  
Lipcerin  
Hydrating Tinted  
Lip Care**  
reg. \$25  
**\$17.99**



Twinkle  
052-750



Flash  
052-909



Gleam  
053-097



Flare  
053-101



Splendor  
053-078



Smolder  
053-140

An intensely moisturizing, glistening formula that visibly softens lips and adds a glossy hint of color. With a plumping peptide, moisture-enhancing glycerin and smoothing shea butter. .5 fl. oz.

# shifting shades magic results

Presto change-o! Formula interacts with your lips' pH and transforms to your personalized shade of pink.



**NEW**

**Beyond Glow  
Lipcerin Color  
Shift**

**Tinted Lip Care**  
A glistening formula that nourishes dry lips and adapts to your lips for a customized shade. Each, .5 fl. oz. reg. \$25  
**\$17.99**



**Day Shift**  
Lemon/lime shade shifts to a **warm pink** on lips.  
840-756



**Night Shift**  
Black shade shifts to a **cool pink** on lips.  
840-760

**96%**  
Said skin  
feels  
smooth\*



**100%**  
Said it  
thoroughly  
melts  
away  
makeup\*



## Cleansers with benefits

fruit-infused cleansers

For All Skin Types

With Kiwi Extract, Vitamins  
B3, B9 and Provitamin B5

**Beyond Glow Gentle Foaming Cleanser  
with Vitamins and Kiwi**

A gentle foaming water-based cleanser that easily washes off makeup and residue without stripping your skin, leaving it feeling soft and smooth. Skin looks brighter and revitalized. 5 fl. oz. **575-760** reg. \$19

**\$14.99**

For All Skin Types

With Mango Butter  
& Papaya Enzyme

**Beyond Glow Melting Balm Cleanser  
with Enzyme and Mango Butter**

Transforms into a silky oil when massaged onto skin. Add water for a creamy cleansing milk that rinses away makeup, residue and even visible blackheads and whiteheads, leaving your skin feeling soft, smooth and refreshed. 5 fl. oz. **575-865** reg. \$19

**\$14.99**

\*Based on a consumer-perception study of 33 people.

### Cleanse + Hydrate

For Dry Skin  
With Hyaluronic  
Acid & Niacinamide

**Beyond Glow  
Hyaluronic Acid +  
Niacinamide  
Facial Cleanser**  
5 fl. oz. **627-821**  
reg. \$15  
**\$11.99**



### Cleanse + Brighten

For Normal Skin  
With Vitamin C  
& AHA

**Beyond Glow  
Vitamin C + AHA  
Facial Cleanser**  
5 fl. oz.  
**628-450**  
reg. \$15  
**NOW \$8.49**



### Cleanse + Exfoliate

For Oily Skin  
With Salicylic  
& Citric Acids

**Beyond Glow  
Salicylic +  
Citric Acids  
Facial Cleanser**  
5 fl. oz. **627-798**  
reg. \$15  
**NOW \$8.49**







### Beyond Glow Niacinamide 2% Cream Mist

Deliver an instant boost of hydration to your skin with this creamy, fast-absorbing spray-on serum that can be used under or over makeup for glowing skin anytime, anywhere. Infused with niacinamide.

3.3 fl. oz. **617-365** reg. \$34

**\$25.99**



### Beyond Glow Niacinamide 10% Neck Firming Cream

Nighttime hydrating neck and chest cream formulated with tried-and-true ingredients niacinamide, shea butter and squalane derived from olive oil, plus panthenol, which helps strengthen the skin barrier. Contains retinol. 3.3 fl. oz. **052-249** reg. \$38

**\$29.99**



### Beyond Glow Niacinamide 10% Eye Cream

Nighttime moisturizing eye cream formulated with tried-and-true ingredients niacinamide and caffeine, plus panthenol, which helps strengthen the skin barrier. Contains retinol.

1 fl. oz. **052-272** reg. \$30

**\$22.99**



## In just 4 weeks:

### Beyond Glow Niacinamide 10% Neck Firming Cream

- Crepey skin appears smoothed\*
- Neck and décolleté lines look improved\*

\*Based on a clinical study on 31 people.

### Beyond Glow Niacinamide 10% Eye Cream

- Crow's-feet appear reduced\*
- Helps under-eye bags look depuffed\*

\*Based on a clinical study on 30 people.

# Minimize the look of PORES

serum + cream  
together  
**3X**  
Reduction in the  
look of pores\*\*



### Beyond Glow Niacinamide 10% + Panthenol Serum

Helps improve even tone and elasticity. Niacinamide, also known as vitamin B3, helps even skin tone and replenish the skin barrier. Panthenol, also known as provitamin B5, helps lock in moisture. 1 fl. oz.

**255-612** reg. \$38

**\$29.99**

### Beyond Glow Niacinamide 10% All-in-One Cream

Nighttime facial cream that helps enhance your healthy-looking glow. All-in-one facial cream that visibly brightens skin, reduces fine lines and helps support the skin barrier. Contains retinol. 3.7 fl. oz.

**617-350** reg. \$38

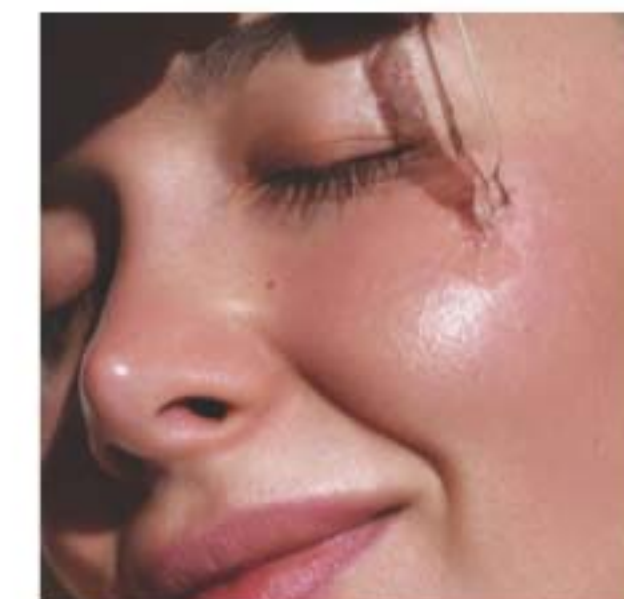
**\$29.99**

Serum + cream, when used together:  
Reduce the look of pores by

**44%<sup>++</sup>**

\*\*Versus using the serum alone, based on a clinical study.

\*\*In a 4-week clinical trial of 32 people.







**Beyond Glow**  
**Hyaluronic Acid 1.5% + Ferulic Acid Serum**

Hyaluronic acid, known as a "moisture magnet," helps infuse skin with instant and lasting hydration. Ferulic acid, a powerful antioxidant, helps defend skin from environmental stressors. 1 fl. oz. **255-593** reg. \$38

**NOW \$22.49**



**Beyond Glow**  
**Vitamin C 6% + Ferulic Acid Serum**

Vitamin C visibly improves radiance for glowing skin. Ferulic acid, a powerful antioxidant, helps protect skin from environmental stressors. 1 fl. oz. **255-589** reg. \$38

**\$29.99**

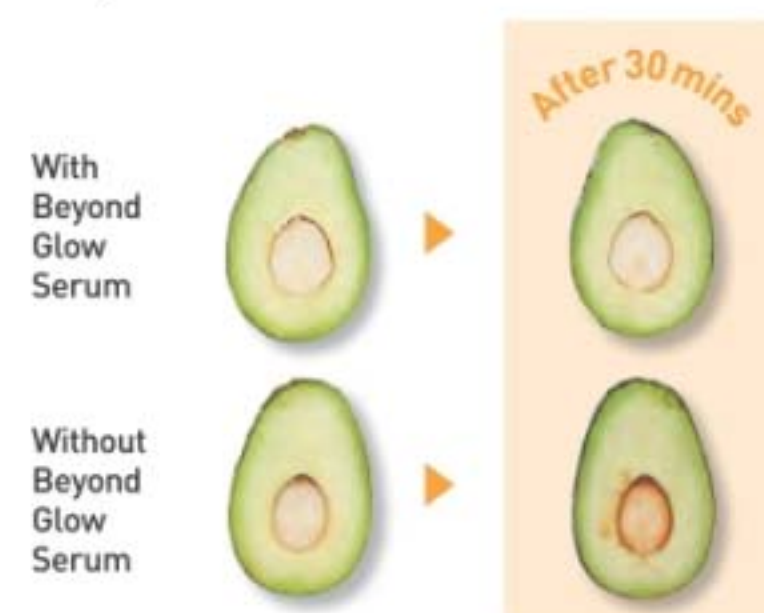
## Clinically tested to improve skin radiance in 3 days

**Q** What makes Beyond Glow Vitamin C serum so special?

**A** **125** HOUR **125-hour antioxidant effect\***

**4X** **4X stronger skin barrier in 2 weeks†**

Just look at the **antioxidant effect!**  
of Beyond Glow Vitamin C 6% + Ferulic Acid Serum



## Boosts absorption of vitamin C by **2X\*\***

Use with  
Vitamin C  
6% + Ferulic  
Acid Serum  
for optimal  
results.

**Beyond Glow**  
**Galvanic Booster Device**

Give your skin a spa treatment at home in three minutes. Red LED light helps tone the appearance of skin texture, enhances your radiant glow and visibly promotes skin health. On-the-go compact design. Automatically turns on and off. Uses two cell batteries (included). **255-627** reg. \$60

**\$49.99**

\*Evaluated by in vitro test. †Based on stripped skin instrumental study on 31 people. \*\*Evaluated by Dongduk Women's University Industry-Academia Cooperation [ex vivo test, DPPH, Oct. 13 to 24, 2023].

# The Trending Star Ingredient: SNAIL MUCIN Complex

Clinically tested to  
improve skin tone  
and brightness

**Beyond Glow Snail Mucin  
Complex + Panthenol Cream**  
Moisturizes while it visibly improves  
texture and elasticity. With snail mucin  
complex and panthenol, which helps lock  
in moisture. 3.7 fl. oz. **255-536** reg. \$36  
**\$27.99**

**Beyond Glow Snail Mucin Complex +  
Niacinamide Serum**  
Visibly brightens, moisturizes and  
retexturizes. With snail mucin complex and  
niacinamide, also known as vitamin B3,  
which helps even skin tone and strengthen  
the skin barrier. 3.3 fl. oz. **255-574** reg. \$36  
**\$27.99**

Our cream and serum, formulated with snail  
mucin complex, moisturize and help visibly  
brighten skin with a clear, cushiony yet  
fast-absorbing texture that disappears into  
the skin while plumping it up with hydration.



## Real Formulas, Real Results



"I'M GETTING SO MANY COMPLIMENTS ON MY BARE SKIN.  
I ALMOST DON'T WANT TO EVEN WEAR MAKEUP!"

"BEYOND GLOW IS A GAME CHANGER.  
I HAVE SEEN A SIGNIFICANT IMPROVEMENT IN MY SKIN."

The Ambassadors were gifted with the Beyond Glow Snail Mucin Cream, plus the four serums from the Beyond Glow regimen (pages 45-47), which they used with the Galvanic Booster Device, AM and PM, for two weeks.



in 7 days, see a  
dramatic difference:

**it lifts. it firms.  
it tightens.  
all in one.**



**Isa Knox Anew Clinical  
Collagen Booster  
Eye Lift Pro Dual Eye System**  
With a peptide complex to help  
boost skin renewal.  
Gel, .33 fl. oz.  
Cream, .33 fl. oz.  
564-550 reg. \$40  
**\$24.99**

### WITH PLUMPING PEPTIDES

Peptides jump-start skin  
renewal to help visibly **firm**  
skin, boost **elasticity** and  
restore **youthful bounce**.

**Isa Knox Anew Clinical Collagen  
Booster Firming Cream**  
With moisturizing and skin-plumping  
niacinamide and squalane. Hygienic,  
airless pump. 1.7 fl. oz.  
069-327 reg. \$45  
**\$29.99**



SKIN CARE



**Isa Knox Anew  
Clinical Collagen Booster  
Rejuvenating Serum Ampoules**  
Powerful peptide blend boosts skin renewal.  
60 capsulated single-use ampoules.  
.008 fl. oz. each.  
803-077 reg. \$66  
**\$54.99**



**Isa Knox Anew Clinical Collagen Booster  
Microneedling Polisher**  
At-home alternative to micro-dermabrasion  
and micro-needling. Visibly diminishes  
pores, fine lines and wrinkles.  
1.7 fl. oz. **798-592**  
reg. \$34  
**\$20.99**



**9 OUT OF 10 WOMEN**  
showed improvement in  
the look of wrinkles...and  
it moisturizes, too.



**Isa Knox Anew Clinical  
Revitalize & Reveal  
Advanced Wrinkle Corrector**  
In just two weeks, wrinkles appear  
reduced. 1.7 fl. oz. **470-100**  
reg. \$40  
**\$29.99**



**Isa Knox Anew Clinical  
Revitalize & Reveal Resurfacing Lotion for Body**  
Exfoliates with gentle yet effective AHA lactic  
acid. Moisturizes with shea butter.  
5 fl. oz. **390-785** reg. \$34  
**\$20.99**



**Isa Knox Anew Clinical  
Revitalize & Reveal Intensive Peel**  
Intensive resurfacing peel similar to  
pro acid peels. With AHA and PHA.  
1 fl. oz. **780-025** reg. \$45  
**\$29.99**



**Isa Knox Anew Clinical Revitalize & Reveal  
Resurfacing Expert Smoothing Fluid**  
79% as effective as a pro micro-dermabrasion  
without the same irritation. 1 fl. oz.  
**852-282** reg. \$44  
**\$31.99**



**Isa Knox Anew Clinical  
Revitalize & Reveal  
Extra Strength Retexturizing Peel**  
Results similar to a 35% pro glycolic peel.\*  
30 fragrance-free pads. 2" diam. **632-774** reg. \$40  
**\$29.99**

\*In 6 out of  
8 attributes  
tested over a  
7-week period.



see more  
youthful skin

Dermatologists recommend  
retinol as the #1 wrinkle fighter



**Isa Knox Anew  
Clinical Line Eraser with Retinol  
Targeted Treatment**  
For targeted lines and wrinkles  
(expression lines) such as around  
forehead and mouth. .67 fl. oz.  
**925-159** reg. \$40  
**\$29.99**



**Isa Knox Anew Clinical  
Line Eraser  
with Retinol Treatment**  
Great for first-time retinol users.  
Use AM/PM. 1 oz. net wt.  
**763-330** reg. \$45  
**\$31.99**



**Isa Knox Anew Clinical  
Line Eraser with Retinol [1.0%]  
Advanced Retinol Serum**  
Our highest dose of retinol.  
Dramatically reduces the  
appearance of fine lines, wrinkles  
and dark spots. Use PM. 1 fl. oz.  
**390-751** reg. \$50  
**\$40.99**





**Anew Ultimate Supreme  
Radiant Firming Cream**

A lightweight moisturizer perfect for daytime use. With panthenol, niacinamide and peptides to help boost hydration, visibly restore brightness and firm skin contours. With bakuchiol, an alternative to retinol, to visibly reduce wrinkles and discolorations without irritation. Clinically tested to improve skin texture and elasticity.

1.7 fl. oz. **835-052** reg. \$60

**\$41.99**



**Anew Ultimate Multi-Performance Eye System**

Visibly smooths crow's-feet and de-puffs under-eye bags. Cream, .5 oz. net wt. Elixir, .09 oz. net wt. **021-862** reg. \$42

**\$29.99**



**Anew Ultimate Night Repair Serum**

See improved tone and texture. With peptides, licorice, hyaluronic acid and niacinamide. Use PM before moisturizer.

1 fl. oz. **625-355** reg. \$45

**\$30.99**



**Anew Ultimate Supreme Eye Balm**

Moisturizing formula infused with squalane, sunflower seed oil and antioxidant vitamin E. Wear alone or under makeup.

0.1 oz. net wt. **625-340** reg. \$45

**\$30.99**



**Anew Ultimate Multi-Performance Night Cream**

It works while you sleep to revive and recreate the look of youthful skin. 1.7 oz. net wt.

**763-311** reg. \$42

**\$29.99**



**Anew Ultimate Supreme Dual Elixir**

With Black Pearl Extract and precious oils. See a dramatic difference in even advanced signs of aging. Serum/Oil, .67 fl. oz. each.

**963-925** reg. \$60

**\$41.99**



**Anew Ultimate Supreme  
Advanced Performance Crème**

With Black Pearl Extract. See a dramatic difference in deep wrinkles and skin radiance.

1.7 oz. net wt. **014-735** reg. \$60

**\$41.99**



**Anew Ultimate Multi-Performance  
Day Cream Broad Spectrum SPF 25**

See wrinkles fade and youthful vibrance return.

1.7 oz. net wt. **763-307** reg. \$42

**\$29.99**



defying gravity  
has never been easier



**Anew Platinum  
Firm and Sculpt Cream  
for Neck and Chest**

With Peptide Lifting Complex to treat the skin on your neck and chest, which is more vulnerable to wrinkles and sagging. Use PM after cleansing. 1.7 oz. net wt.

763-584 reg. \$42

**\$29.99**

**Anew Platinum  
Night Cream**

Skin appears smoother overnight, resculpted over time. 1.7 oz. net wt.

753-439 reg. \$42

**\$29.99**

**Anew Platinum  
Eye & Lip Cream**

Dual applicator. .5 oz. net wt.

902-614 reg. \$42

**\$29.99**

**Anew Platinum  
Day Cream**

**Broad Spectrum SPF 25**  
With Paxillium Technology to help defy gravity and Radiescent Microspheres to help visibly restore radiance. 1.7 oz. net wt.

184-146 reg. \$42

**\$29.99**



**Anew Platinum Age Delay Serum**

With niacinamide, panthenol and peptides. Formulated to visibly boost elasticity for a firmer look. Use AM and PM before moisturizer. 1 fl. oz. 625-609 reg. \$45

**\$30.99**



**Anew Platinum Sculpting Sleep Mask**

An overnight mask that helps visibly lift, plump and nourish skin while you sleep. Formulated with skin-contouring ingredients, including tetrapeptide, panthenol, niacinamide and yeast extract. Clinically tested to improve skin texture and wrinkles in two weeks. 1.7 fl. oz. 835-033 reg. \$42

**\$29.99**



**Anew Platinum  
Sculpting Body Serum**

With moisture-boosting niacinamide, panthenol (provitamin B5) and peptides. 6.7 fl. oz. 506-249 reg. \$45

**\$30.99**






**Anew Hydra Fusion  
De-Puffing  
Eye Serum**

With caffeine and hyaluronic acid. Cooling ceramic tip. Instantly boosts hydration around eye area by 3X. .5 fl. oz. **137-737** reg. \$34  
**\$22.99**

**Anew Hydra Fusion  
1.5% Hyaluronic  
Acid Serum**

With three different molecular sizes of HA that reach multiple layers of skin's surface to visibly plump skin. 1 fl. oz. **290-390** reg. \$44  
**\$25.99**

**Anew Hydra Fusion  
Cleansing  
Micellar Water**

No need to rinse off. 10.1 fl. oz. **139-380** reg. \$14  
**\$9.99**

**Anew Hydra Fusion  
Nighttime Facial  
Treatment**

Hyaluronic acid. Shea butter beads. Visibly re-plumps skin with 3X more moisture. Relaxing rose scent. 1.7 oz. net wt. **139-429** reg. \$34  
**NOW \$16.99**

**Anew Hydra Fusion  
Gel Cream**

72 hours of long-lasting hydration. 1.7 oz. net wt. **266-893** reg. \$34  
**\$22.99**

**100%** agree:

skin looks  
smoother  
and softer\*

\*Based on a consumer-perception study.



For dry, irritated skin

**moisturizing bomb toner**  
A fast-absorbing, milky-textured toner clinically tested to increase skin's moisture levels in arid, dry conditions. 6.7 fl. oz. **929-207** reg. \$33  
**\$30**

For dryness, loss  
of elasticity and  
firmness



**moisturizing eye bomb**  
Lightweight, refreshing eye cream cools on contact. Helps keep eye area looking firm, resilient and smooth. .84 fl. oz. **021-915** reg. \$53  
**\$48**

For dryness,  
dullness and  
uneven texture



**The True Cream - Aqua Bomb**  
70% increase in hydration levels.\* 1.69 fl. oz. **556-207** reg. \$42  
**\$38**

\*Based on a clinical study.

For an extra boost  
of hydration



**aqua bomb hydrating toner**  
Water-based. With hyaluronic acid, honeysuckle flower extract and baobab tree seed extract. Use after cleansing, before serum and moisturizer. 6.7 fl. oz. **106-648** reg. \$33  
**\$30**

For dryness, loss  
of elasticity and  
firmness



**The True Cream - Moisturizing Bomb**  
26 hours of long-lasting moisture.\* 1.69 fl. oz. **079-252** reg. \$42  
**\$38**

\*Based on a clinical study.

For dryness,  
dullness and  
uneven texture



**aqua bomb jelly cleanser**  
Jelly to foam. Amino acids and glycerin-based cleansing agents gently cleanse. 5.41 fl. oz. **445-353** reg. \$35  
**\$30**

For dull, dry,  
fatigued skin



**aqua bomb sleeping mask**  
Unique jelly-pudding texture! Replenishes with explosive hydration for smoother skin and a healthy glow. 2.53 oz. net wt. **514-717** reg. \$42  
**\$38**





**NORMAL TO DRY SKIN**

**Isa Knox LXNEW Clean  
Nourishing Cream Cleanser**

Removes impurities and makeup while  
restoring moisture. 5 fl. oz. **717-990** reg. \$15

**\$11.99**



**OILY TO NORMAL SKIN**

**Isa Knox LXNEW Clean  
Soothing Whipped Oil Cleanser**

Helps eliminate impurities and excess oil.  
5 fl. oz. **718-025** reg. \$19

**\$14.99**



**NORMAL, DRY AND  
COMBINATION SKIN**

**Isa Knox LXNEW  
Clean Balancing Gel Cleanser**

Gel to foam. Helps remove oil and  
impurities while rebalancing skin.  
5 fl. oz. **718-010** reg. \$15

**\$11.99**



**NORMAL, DRY,  
COMBINATION, OILY SKIN**

**Isa Knox LXNEW Clean 2-in-1  
Exfoliating Cleansing Balm**

Melts away makeup and impurities.  
Spatula included. 3.5 oz. net wt.

**718-006** reg. \$32

**NOW \$19.49**

#### Avon Solutions Banishing Serum

An intensive serum with ingredients known to  
help improve the appearance of dark spots and  
uneven skin tone. 1 fl. oz. **507-905** reg. \$18

**\$13.99**

#### Avon Solutions Dramatic Firming Serum

This moisturizing serum contains  
effective anti-aging ingredients that help  
promote a more youthful appearance.  
1 fl. oz. **507-871** reg. \$18

**\$13.99**



#### Avon Solutions Nurtura Serum

With skin-nourishing ingredients  
known to help combat dryness  
and flakiness, and help hydrate.  
1 fl. oz. **507-924** reg. \$18

**\$13.99**



#### Solutions Dramatic Firming Cream

Skin looks and  
feels smoother.  
1.7 fl. oz.  
**374-657**  
reg. \$14

**\$10.99**



#### Solutions Nurtura Replenishing Cream

Adds moisture to  
dry skin. 1.7 fl. oz.  
**908-263**  
reg. \$14

**\$10.99**



#### Solutions Banishing Cream Skin Discoloration Improver

Visibly improves  
skin tone.  
1.7 fl. oz.  
**267-115**  
reg. \$14

**\$10.99**



#### Solutions Anti-Aging Cream

Moisturizing  
formula works to  
visibly smooth the  
appearance of fine  
lines and wrinkles.  
1.7 fl. oz. **949-460**  
reg. \$14

**\$10.99**





**Rice Water Bright  
Rice Bran  
Gentle Exfoliating  
Cleanser**  
Daily scrub with  
organic rice bran  
powder, rice bran oil  
and hydrated silica.  
10.1 fl. oz. **376-865**  
reg. \$19  
**\$14.99**



**Rice Water Bright  
Facial Cleansing  
Lotion**  
Helps brighten skin.  
Gently removes  
makeup and  
impurities.  
6.7 fl. oz. **720-184**  
reg. \$14  
**\$10.99**



**Rice Water Bright  
Foaming Cleanser**  
Light whipped foam.  
With rice water and  
soapwort extract.  
Skin looks clear  
and bright.  
10.1 fl. oz. **508-093**  
reg. \$19  
**\$14.99**



**Rice Water Bright  
Mild Cleansing  
Water**  
Removes impurities  
via the micellar  
method, so no need  
to rinse off!  
16.9 fl. oz. **288-360**  
reg. \$18  
**\$13.99**



**Smaller Size!  
Rice Water Bright  
Foaming Cleanser**  
Light whipped foam.  
With rice water and  
soapwort extract.  
Convenient size for  
your medicine cabinet.  
5 fl. oz. **478-479**  
reg. \$13  
**\$9.99**



**Rice Water Bright  
Light Facial  
Cleansing Oil**  
With jojoba oil  
and rice water  
extract, known to  
visibly brighten and  
moisturize skin.  
5 fl. oz. **720-199**  
reg. \$20  
**\$15.99**



**Rice Water Bright  
Cleansing  
Facial Wipes**  
Great on the go.  
With rice extract to  
moisturize while  
cleansing. Removes  
eye makeup.  
50 sheets. **508-108**  
reg. \$13  
**\$9.99**



**Rice Water Bright  
Facial Massage  
Cream**  
With rice water,  
vitamins A, B  
and E, ceramide  
and minerals. After  
cleansing, massage  
into skin 2-3 times  
a week. 6.7 fl. oz.  
**450-200** reg. \$25  
**\$19.99**

**Best of  
K-Beauty**



**Calendula  
Essential Moisture**  
Daily skin care for irritated  
and sensitive skin. With  
moisturizing calendula  
extract, a soothing herb  
complex, and the ultimate  
hydrator, hyaluronic acid.

**A. Serum**  
A moisturizing and  
soothing serum that  
helps calm skin  
and enhance hydration.  
1.35 fl. oz. **746-263**  
reg. \$15  
**NOW \$8.99**

**B. Eye Cream**  
A lightweight, non-  
greasy, moisturizing  
and soothing eye  
cream.  
.67 fl. oz. **966-245**  
reg. \$14  
**NOW \$7.99**

**C. Cream**  
A moisturizing cream  
that instantly hydrates  
while it gently helps  
soothe dry, itchy,  
irritated skin. 1.69 fl. oz.  
**966-101** reg. \$15  
**NOW \$8.99**



# FRAGRANCE

From alluring eau de parfums to spirited colognes, fresh florals to woody notes, each scent in our collection lets you express yourself.

scents to last

**Far Away  
Perfumed Skin Softener**



**free**

WITH ANY  
FAR AWAY BRAND  
EAU DE PARFUM PURCHASES,  
PAGES 64-65. \$7 VALUE  
Limited quantities.  
Sold separately on page 81.

**Haiku  
Perfumed Skin Softener**



**free**

WITH ANY  
HAIKU BRAND EAU DE PARFUM  
PURCHASES,  
PAGES 66-67. \$7 VALUE  
Limited quantities.  
Sold separately on page 81.

**Imari  
Perfumed Skin Softener**



**free**

WITH ANY  
IMARI BRAND EAU DE PARFUM  
OR TOILETTE PURCHASES,  
PAGE 68. \$7 VALUE  
Limited quantities.  
Sold separately on page 81.





fruity floral

**Far Away Bali Eau de Parfum**  
Grapefruit, salted tuberose and amber.  
1.7 fl. oz. **451-389**  
reg. \$30  
**\$22.99 \$12.49**



amber floral

**Far Away Eau de Parfum**  
Freesia, jasmine and amber.  
1.7 fl. oz. **685-712**  
reg. \$30  
**\$22.99 \$16.99**



fruity floral

**Far Away Infinity Eau de Parfum**  
Bergamot, jasmine sambac and sandalwood.  
1.7 fl. oz. **888-301** reg. \$30  
**\$22.99 \$16.99**



soft amber

**Far Away Gold Eau de Parfum**  
Ylang-ylang, jasmine and vanilla.  
1.7 fl. oz. **888-297** reg. \$30  
**\$22.99 \$16.99**

amber floral

**Far Away Moroccan Nights**  
**Eau de Parfum**  
Spicy floral notes dance in  
a Moroccan dream. 1.7 fl. oz.  
**612-655** reg. \$30  
**\$22.99 \$16.99**

Top: Violet Leaf, Powdery  
Orris, Heliotrope  
Mid: Blooming Moroccan  
Mimosa, White Tonka,  
Cardamom, Orange Flower  
Base: Creamy Cashmere  
Woods, Musk, Sandalwood

## The Allure Of Moroccan Nights





woody floral

**Haiku Sunrise Eau de Parfum**Coconut water, rhubarb  
and cedarwood.1.7 fl. oz. **091-500**

reg. \$30

**\$22.99 \$16.99**

fresh green

**Haiku Kyoto Flower Eau de Parfum**

Violet leaf, white peony and cotton musk.

1.7 fl. oz. **144-352**

reg. \$30

**\$22.99 \$16.99**

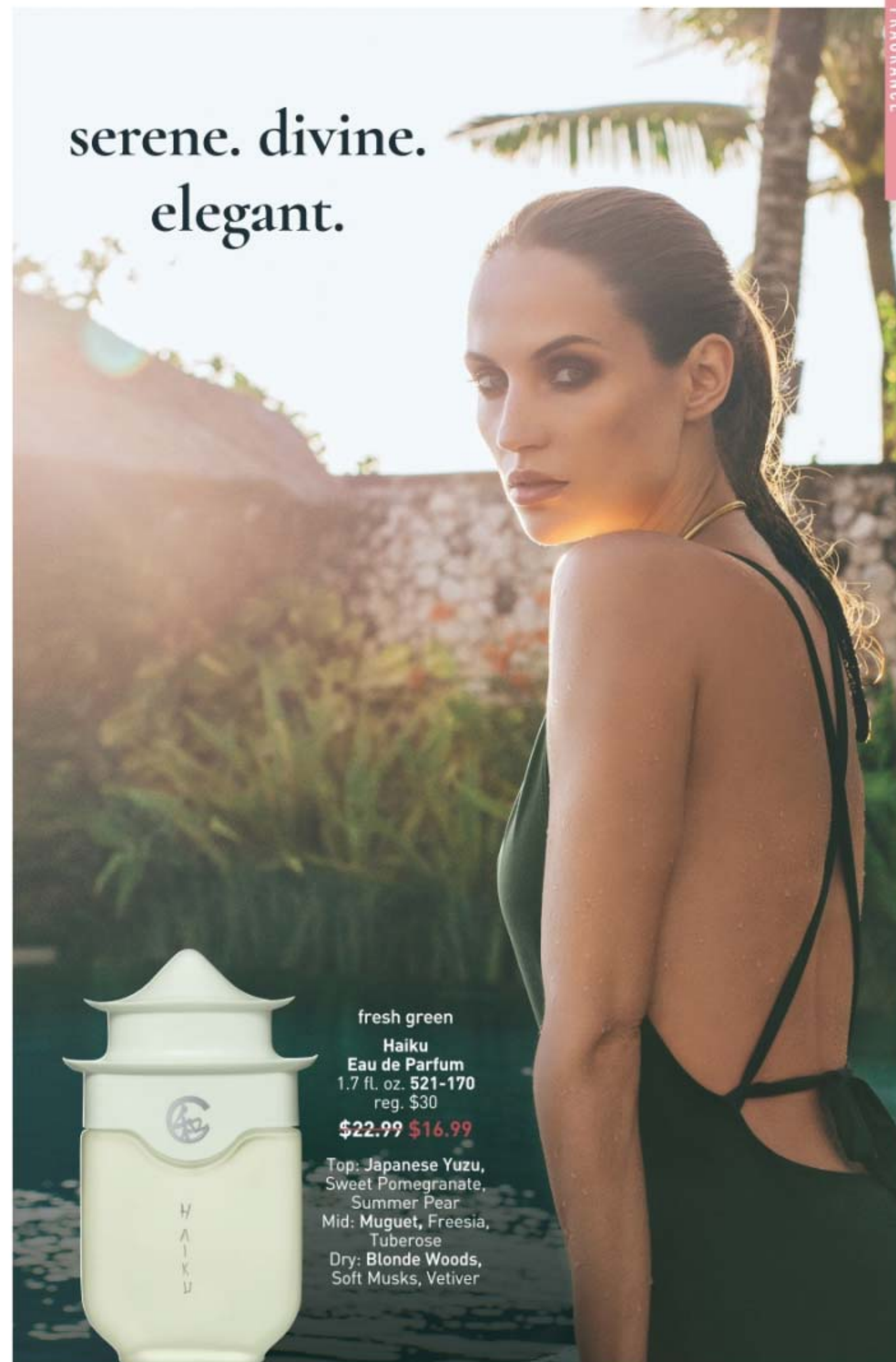
fresh green

**Haiku Reflection Eau de Parfum**

Water accord, acacia blossom and amber wood.

1.7 fl. oz. **617-657**

reg. \$30

**\$22.99 \$16.99**serene. divine.  
elegant.

fresh green

**Haiku****Eau de Parfum**1.7 fl. oz. **521-170**

reg. \$30

**\$22.99 \$16.99**Top: Japanese Yuzu,  
Sweet Pomegranate,  
Summer Pear  
Mid: Muguet, Freesia,  
TuberoseDry: Blonde Woods,  
Soft Musks, Vetiver





woody floral

**Imari Amor Eau de Parfum**  
Black currant, orris and warm musk.  
1.7 fl. oz. 762-573 reg. \$30  
**\$22.99 \$16.99**



amber floral

**Imari Seduction Eau de Toilette**  
Wild berries, purple orchid and patchouli.  
1.7 fl. oz. 452-897 reg. \$30  
**\$22.99 \$16.99**

embrace your desire

soft amber

**Imari Eau de Toilette**  
Bergamot, jasmine and  
amber. 1.7 fl. oz. 047-038  
reg. \$30  
**\$22.99 \$16.99**



soft amber

**Rare Gold Eau de Parfum**  
Mandarin zest, ylang-ylang  
and amber. 1.7 fl. oz.  
933-115 reg. \$32  
**\$24.99 \$18.49**



soft floral

**Rare Pearls Eau de Parfum**  
Magnolia, white pepper and rosewood.  
1.7 fl. oz. 761-615 reg. \$32  
**\$24.99 \$18.49**



fruity floral

**Rare Amethyst Eau de Parfum**  
Plum, violet and sandalwood.  
1.7 fl. oz. 933-062 reg. \$32  
**\$24.99 \$18.49**



## IT'S YOUR LIFE, OWN IT.

Express yourself with an exciting, affirmative statement of pure confidence, fierce independence and vibrant energy.



amber floral

### Live Out Loud U Be U

Top: Nectarine, Cardamom, Marshmallow  
Mid: Sweet Fig, Coconut Praline, Jasmine  
Base: Whipped Vanilla, Creamy Woods, Musk

Body Cream 048-000

Body Mist 047-114

fruity floral

### Live Out Loud Retro Sun

Top: Guava, Tropical Mango, Tangerine  
Mid: Plumeria, Orange Flower, Creamy Coconut  
Base: Rich Amber, Moss, Cedarwood

Body Cream 047-300

Body Mist 047-076

fruity floral

### Live Out Loud Guilt Free

Top: Bergamot, Plum, Pink Dragon Fruit  
Mid: Muguet, Rose, Violet Leaf  
Base: Sandalwood, Vanilla, Creamy Musk

Body Cream 047-320

Body Mist 047-100



**NEW**

### Live Out Loud Body Cream

Fluffy, whipped cream with hyaluronic acid moisturizes and nourishes, leaving skin soft, glowing and beautifully scented.

Each, 5 fl. oz. reg. \$21

**\$15.99 each**

**NEW**

### Live Out Loud Body Mist

Lightweight, refreshing mist absorbs quickly and leaves skin feeling soft, supple and beautifully scented.

Each, 3.4 fl. oz. reg. \$22

**\$16.99 each**







fruity floral

**Live Out Loud #4U**  
Eau de Parfum  
Mandarin, peach blossom  
and vanilla. 1.7 fl. oz.  
735-968 reg. \$40  
**\$30**



fruity floral

**Live Out Loud**  
Eau de Parfum  
Strawberry, mimosa and  
vanilla. 1.7 fl. oz. 142-000  
reg. \$40  
**NOW \$22.49**



fruity floral

**Live Out Loud Solar Vibes**  
Eau de Parfum  
Bergamot, coconut water and  
fluffy marshmallow. 1.7 fl. oz.  
835-822 reg. \$40  
**\$30**

love begins with you



soft floral

**Today Eau de Parfum**  
Magnolia blossoms, hibiscus petals  
and silk musk. 1.7 fl. oz. 490-855  
reg. \$40  
**\$30**



every  
**MOMENT**  
tells a story



soft amber

**Avon Moments**  
**Out On A Limb**  
Spicy cardamom, honeyed  
mimosa flower and powdery  
vanilla.

**Eau de Toilette 196-112**  
1.7 fl. oz. reg. \$36  
**\$27.99**

**Body Wash 196-442**  
7.7 fl. oz. reg. \$19  
**\$14.99**

**Out On A Limb Set 007-718**



amber floral

**Avon Moments**  
**Remember That Night**  
Sparkling grapefruit, opulent  
jasmine and amber.

**Eau de Toilette 196-662**  
1.7 fl. oz. reg. \$36  
**\$27.99**

**Body Wash 196-768**  
7.7 fl. oz. reg. \$19  
**\$14.99**

**Remember That Night Set**  
008-020



fruity floral

**Avon Moments Day Dreamer**  
Quince, dewy iris and  
cedarwood.

**Eau de Toilette 196-772**  
1.7 fl. oz. reg. \$36  
**\$27.99**

**Body Wash 196-844**  
7.7 fl. oz. reg. \$19  
**\$14.99**

**Day Dreamer Set 008-236**



**BOTH FOR \$30.49**

same scent  
page 73. \$55 VALUE



lush &  
invigorating



fresh green

**LYRD Pear Blossom & Bamboo  
Eau de Parfum**

Lemon zest, dewy bamboo, sweet pear blossom.  
1.7 fl. oz. **763-804** reg. \$45

**\$35**



fresh green

**LYRD Honeysuckle Blossom  
Eau de Parfum**

Apple blossom, honeysuckle nectar and  
vanilla orchid. 1.7 fl. oz. **167-270**  
reg. \$34

**\$26**



**LYRD Peony Rosé  
Hair and Body Mist\***

Soft floral. Lightweight formula envelops you in  
a soft cocoon of scent with notes of peony petals,  
pink currant and sheer musk. Leaves hair with  
a subtle, healthy-looking shine. 3.25 fl. oz.

**167-212** reg. \$19

**\$14.99**



**LYRD Honeysuckle Blossom  
Hair and Body Mist\***

Lightweight formula envelops you in a soft  
cocoon of scent with notes of apple blossom,  
honeysuckle nectar and vanilla orchid.  
Leaves hair with a subtle, healthy-looking shine.

3.25 fl. oz. **167-231** reg. \$19

**\$14.99**



fresh green

**LYRD Coastal Lotus  
Eau de Parfum**

Sparkling mandarin, island gardenia and  
lotus flower. 1.7 fl. oz.

**869-906** reg. \$42

**\$35**

elegant yet wild

**NEW**

fresh citrus

**LYRD  
Clementine &  
Poppy  
Eau de Parfum**  
1.7 fl. oz. **922-384**  
reg. \$45

**\$35**

Top: Fresh Air  
Accord, Blood  
Orange, Clementine,  
Bergamot, Black  
Currant  
Mid: Guava, Poppy  
Flowers, Orange  
Blossom, Jasmine,  
Tuberose  
Base: Cashmere  
Woods, Sheer Musk





**LIMITED EDITION**❖ **LYRD Some Like It Hot Candle**

Creamy coconut, juicy mandarin and warm vanilla. Gives 30 hours of burn time. 7 oz. net wt. 3 1/8" diam. x 3 1/2" H. Glass jar, soy-blend wax. Assembled in USA.

746-450

reg. \$25

**\$19.99****LIMITED EDITION**❖ **LYRD Back From the Beach Candle**

Orange blossom, water lily and musk. Gives 30 hours of burn time. 7 oz. net wt. 3 1/8" diam. x 3 1/2" H. Glass jar, soy-blend wax. Assembled in USA.

747-035

reg. \$25

**\$19.99****LIMITED EDITION**❖ **LYRD Surf's Up, Bottoms Up Candle**

Ripe banana, tropical rum and sweet whipped cream. Gives 30 hours of burn time. 7 oz. net wt. 3 1/8" diam. x 3 1/2" H. Glass jar, soy-blend wax. Assembled in USA.

746-445 reg. \$25

**\$19.99****LIMITED EDITION**❖ **LYRD Bonfire Wooden Wick Candle**

Earthy oakmoss, salty beach wood and fiery amber. Gives 28 hours of burn time. 11 oz. net wt. 4 1/4" diam. x 3 1/8" H. Wooden wick, glass jar, soy-blend wax. Assembled in USA.

765-625 reg. \$25

**\$19.99**

Unique wooden wick design gives a clean, even burn.

A large, clear glass bottle of LYRD Sultry Orchid Eau de Parfum. The bottle has a black cap and a label that reads "LYRD" and "SULTRY ORCHID ORCHIDÉE SENSUELLE". The background is dark with red orchid flowers.

amber floral  
**LYRD Sultry Orchid Eau de Parfum**  
Pink saffron, red orchid and warm amber. 1.7 fl. oz.  
892-960 reg. \$42  
**\$35**

**wildly indulgent. simply sublime.**

**LYRD Sultry Orchid Travel Spray**

.3 fl. oz. 612-799  
reg. \$19

**NOW \$10.99****LYRD Vanilla Rose Travel Spray**

.3 fl. oz. 505-128  
reg. \$19

**\$14.99**

## amber floral

**LYRD Vanilla Rose Eau de Parfum**

Dewy roses, comforting vanilla and cedarwood. 1.7 fl. oz.  
094-020 reg. \$42

**\$35**



## layering essentials

**Far Away  
Body Scrub  
& Wash**  
6.7 fl. oz.  
143-360  
reg. \$15  
**NOW  
\$7.99**



**Far Away  
Hair and Body  
Mist**  
3.25 fl. oz.  
572-536  
reg. \$18  
**NOW \$10.99**



**Far Away  
Body Lotion**  
6.7 fl. oz.  
082-881  
reg. \$14  
**NOW \$6.99**



**Haiku Hair and Body Mist**  
3.25 fl. oz. 572-574  
reg. \$18  
**NOW \$10.99**



**Haiku  
Hand Cream**  
2.5 fl. oz. 364-808 reg. \$9  
**\$6.99**



**Rare Pearls  
Hand Cream**  
2.5 fl. oz.  
364-827  
reg. \$9  
**\$6.99**



**Far Away  
Hand Cream**  
2.5 fl. oz.  
364-850  
reg. \$9  
**\$6.99**



**Haiku Body Lotion**  
6.7 fl. oz. 447-820  
reg. \$14  
**NOW \$7.99**



**Haiku  
Body Scrub  
& Wash**  
6.7 fl. oz.  
143-208  
reg. \$15  
**NOW  
\$7.99**



**Rare Pearls  
Body Lotion**  
6.7 fl. oz.  
082-915  
reg. \$14  
**\$10.99**



**Rare Pearls  
Hair and Body  
Mist**  
3.25 fl. oz.  
572-851  
reg. \$18  
**NOW  
\$10.99**





soft floral

**Avon Classics Soft Musk Cologne**  
Peach blossom, blonde woods and  
sheer musk. 1.7 fl. oz. **787-790**  
reg. \$20  
**\$15.99**



soft floral

**Avon Classics Dreamlife Cologne**  
Mimosa flower, rose and amber.  
1.7 fl. oz. **236-227** reg. \$20  
**\$15.99**



woody floral

**Avon Classics Night Magic Cologne**  
Neroli, jasmine and musk.  
1.7 fl. oz. **439-495** reg. \$20  
**\$15.99**

## scented softness

**Perfumed Skin Softener**  
Moisturizing formula leaves skin soft and  
scented. Each, 5 fl. oz. reg. \$7  
**\$4.99 each**

Avon Classics Candid 739-160  
Avon Classics Odyssey 739-762  
Imari 738-751  
Haiku 738-694

Avon Classics Timeless 739-155  
Avon Classics Sweet Honesty 740-246  
Avon Classics Night Magic 738-766  
Far Away 049-246



soft floral

**Avon Classics Candid Cologne**  
Bergamot, tuberose and  
patchouli. 1.7 fl. oz. **038-295**  
reg. \$20  
**NOW \$9.99**



soft floral

**Avon Classics Odyssey Cologne**  
Tuberose, ylang-ylang and  
oakmoss. 1.7 fl. oz. **900-391**  
reg. \$20  
**\$15.99**



soft floral

**Avon Classics Sweet Honesty Cologne**  
Lily of the valley, rose and cedarwood.  
1.7 fl. oz. **901-861** reg. \$20  
**\$15.99**



soft floral

**Avon Classics Timeless Cologne**  
Cardamom, jasmine and  
patchouli. 1.7 fl. oz. **037-930**  
reg. \$20  
**\$15.99**



soft floral

**Avon Classics Topaze Cologne**  
Jasmine, rose and sheer musk.  
1.7 fl. oz. **735-217**  
reg. \$20  
**\$15.99**



fresh green

**Free O<sub>2</sub> Eau de Toilette**  
White peach tea, honeysuckle  
and musk. 1.7 fl. oz. **490-840**  
reg. \$20  
**\$15.99**



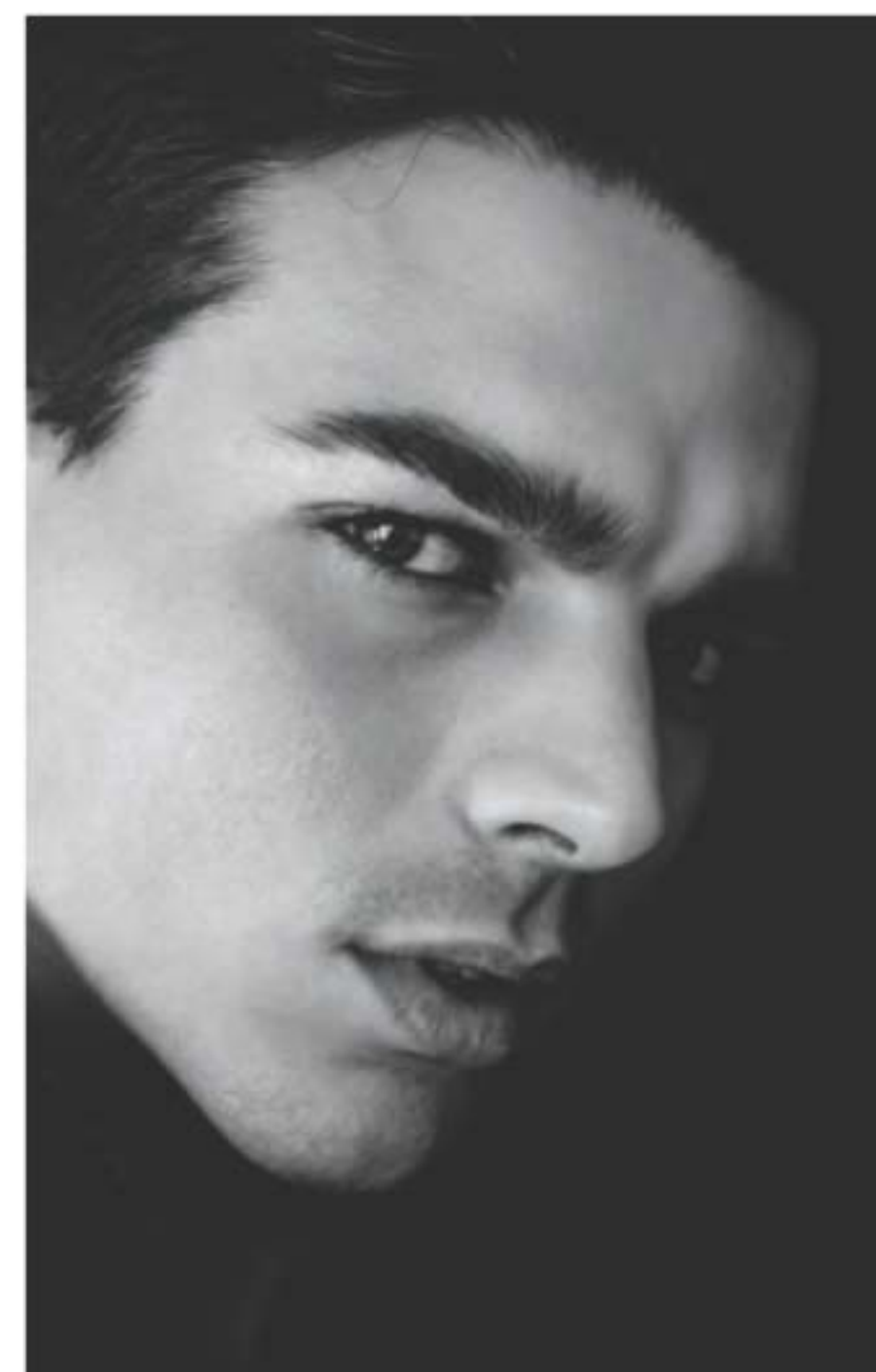


let your senses be your guide



fresh aromatic  
**Perceive Cologne**  
3.4 fl. oz. 888-062 reg. \$32  
**\$24.99**

Top: Mandarin, Grapefruit, Sparkling Citrus  
Mid: Geranium, Earthy Sage, Lavender  
Base: Calming Cedarwood, Patchouli, Amber



captivate at a  
single glance



woody  
**Mesmerize Black Eau de Toilette**  
Pepper, nutmeg and tonka bean.  
3.4 fl. oz. 305-667 reg. \$32  
**\$24.99**



fresh aromatic  
**Mesmerize Cologne**  
Bergamot, cardamom and amber.  
3.4 fl. oz. 871-458 reg. \$32  
**\$24.99**





**Wild Country  
Hair & Body Wash**  
5 fl. oz. 215-188  
reg. \$9  
**\$6.99**



**Wild Country  
Aftershave Splash**  
4 fl. oz. 366-432  
reg. \$16  
**\$12.99**

fresh aromatic

**Wild Country Cologne**  
Lavender, coriander seed  
and sandalwood. 3 fl. oz.  
086-466 reg. \$25

**\$19.99**

Packaging may vary.



cause a stir

woody

**Black Suede  
The Blend  
Eau de Toilette**  
Aged rum-soaked  
casks, smoky leather  
and spicy woods.  
3.4 fl. oz.  
433-865  
reg. \$30  
**\$22.99**



woody

**Black Suede Eau de Toilette**  
Bergamot, leather and oakmoss.  
3.4 fl. oz. 908-703 reg. \$25

**\$19.99**



**Black Suede  
Hair & Body Wash**  
5 fl. oz. 230-200  
reg. \$9  
**\$6.99**



# BATH & BODY

Pamper yourself from head to toe. We keep your body and hair looking healthy so you'll love your locks and have the confidence to show more skin.



NEW Skin So Soft +  
**Hydro-  
Plenish**  
WITH HYALURONIC ACID

A luxurious collection with hyaluronic acid adds extra hydration so skin looks youthfully plump.





NEW Skin So Soft +  
**HydroPlenish**  
 WITH HYALURONIC ACID



**NEW**

**Body Lotion**

48-hour moisturization. Replenishing body lotion with hyaluronic acid and panthenol to help boost hydration and visibly restore skin's natural glow. Lightly fragranced. 11.8 fl. oz. **764-160** reg. \$26

**\$20.99**

**Shower Gel**

With sunflower seed oil and cupuacu butter to soften and smooth while it helps to boost hydration and restore skin's natural glow. Lightly fragranced. 8 fl. oz. **763-967** reg. \$23

**\$17.99**

**Body Scrub**

Exfoliating body scrub with sunflower seed oil and cupuacu butter to soften and smooth while it helps to boost hydration and restore skin's natural glow. Lightly fragranced. 8.2 oz. net wt. **763-857** reg. \$25

**\$19.99**

**Bath & Body Oil**

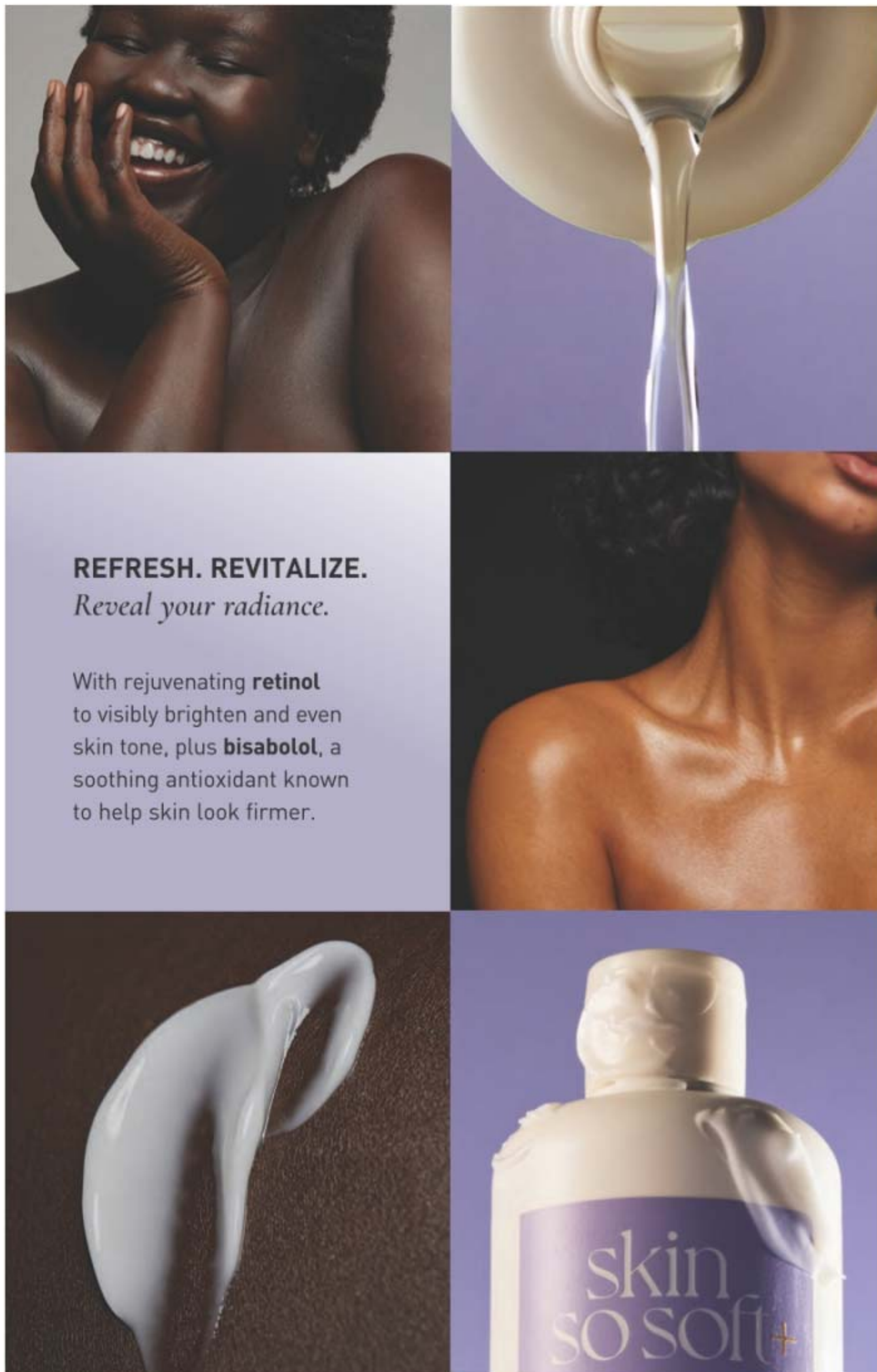
48-hour moisturization. With hyaluronic acid, sunflower seed oil and cupuacu butter to boost hydration and help skin look dewy with a natural glow. Lightly fragranced. 11.8 fl. oz. **763-971** reg. \$38

**\$29.99**

Enhanced with squalane, niacinamide and other high-performance ingredients to help boost and lock in hydration so skin appears plumper, softer and smoother with a natural healthy-looking glow.







**REFRESH. REVITALIZE.**  
*Reveal your radiance.*

With rejuvenating **retinol** to visibly brighten and even skin tone, plus **bisabolol**, a soothing antioxidant known to help skin look firmer.

**NEW Skin So Soft +  
RADIANT  
RENEW**  
with retinol



**Bath & Body Oil**  
48-hour hydration! With squalane to help boost moisturization. Skin looks smooth with a radiant glow. Apply during or after a bath or shower. Lightly fragranced. 11.8 fl. oz. **051-955** reg. \$38

**\$29.99**

**Shower Gel**  
Infused with argan oil, an abundant source of fatty acids, antioxidants and vitamin E, to help skin feel softer, smoother and rejuvenated. Lightly fragranced. 8 fl. oz. **051-458** reg. \$23

**\$17.99**

**Body Lotion**  
48-hour moisturization! With intensely hydrating hyaluronic acid. Skin looks softer, smoother, plumper and more radiant. Lightly fragranced. 11.8 fl. oz. **051-974** reg. \$26

**\$20.99**



# THE BEAUTY OF *Jojoba Oil*



## ORIGINAL

**Bath Oil**  
Fresh herbal scent.  
16.9 fl. oz. **439-040**  
reg. \$25  
**\$19.99**

**Replenishing Hand Cream**  
3.4 fl. oz. **776-633**  
reg. \$8  
**NOW \$4.49**

**Beauty Bar Soap**  
3.17 oz. net wt. **543-110**  
reg. \$5  
**\$3.99**

**Body Lotion**  
48 hours of moisture.  
11.8 fl. oz. **761-634**  
reg. \$17  
**\$12.99**

**Bonus-Size Body Lotion**  
33.8 fl. oz. **825-351**  
reg. \$26  
**\$17.99**

**Bonus-Size Shower Gel**  
Cleanses and hydrates.  
33.8 fl. oz. **433-444**  
reg. \$19  
**\$14.99**

**Shower Gel**  
5 fl. oz. **914-580**  
reg. \$9  
**\$5.99**



This plant extract mimics skin's natural oils, with vitamins and minerals essential to keep skin soft and smooth.

**Original Gelled Body Oil**  
Dries to a silky finish.  
6.76 fl. oz. **939-500**  
reg. \$16  
**\$12.99**

**Original Bath Oil Spray**  
Locks in hydration.  
5 fl. oz. **441-692**  
reg. \$19  
**\$13.99**

**Original Bonus-Size Bath Oil**  
Use during or after bath or shower. 24.6 fl. oz. **663-480**  
reg. \$35  
**\$26.99**





# THE BEAUTY OF *Argan Oil*

So precious, it's called "liquid gold."

Packed with vitamin E, it helps to visibly restore skin's luster and keep it irresistibly soft.



**Gelled Body Oil**  
Dries to a silky finish.  
6.76 fl. oz. 908-244  
reg. \$16  
**\$12.99**

**Bonus-Size Bath Oil**  
Hydrates during or  
after bath or shower.  
25 fl. oz. 862-920  
reg. \$35  
**\$26.99**



## SOFT & SENSUAL

**Shower Gel**  
5 fl. oz. 914-710 reg. \$9  
**\$5.99**

**Bath Oil**  
Spicy floral scent.  
16.9 fl. oz. 504-614 reg. \$25  
**\$19.99**

**Bonus-Size Shower Gel**  
33.8 fl. oz. 018-142 reg. \$19  
**\$14.99**

**Body Lotion**  
11.8 fl. oz. 400-720 reg. \$17  
**\$12.99**

**Replenishing Hand Cream**  
3.4 fl. oz. 779-924 reg. \$8  
**NOW \$4.49**

**Bonus-Size Body Lotion**  
33.8 fl. oz. 825-643 reg. \$26  
**\$17.99**

**Beauty Bar Soap**  
3.17 oz. net wt. 543-215 reg. \$5  
**\$3.99**





**Radiant Moisture  
Bonus-Size  
Shower Gel**  
33.8 fl. oz.  
433-922  
reg. \$19  
**NOW \$10.99**



**Radiant Moisture  
Bonus-Size  
Body Lotion**  
48 hours of moisture.  
33.8 fl. oz.  
620-956  
reg. \$26  
**NOW \$13.49**



**Botanical Essence  
Bath Oil**  
With nourishing  
botanical extracts.  
Uplifting herbal scent.  
16.2 fl. oz.  
027-253 reg. \$32  
**NOW \$18.49**



**Radiant Moisture  
Bonus-Size Bath Oil**  
Hydrates during or  
after bath or shower.  
25 fl. oz. 249-788  
reg. \$30  
**NOW \$18.49**

**Radiant Moisture  
Replenishing  
Hand Cream**  
3.4 fl. oz. 776-561  
reg. \$8  
**NOW \$4.49**



**Comforting Shea  
Bath Oil**  
With shea butter  
and oil. Vanilla,  
sandalwood and  
musk scent. 16.9 fl. oz.  
015-071  
reg. \$24  
**NOW \$13.49**



**Radiant Moisture  
Shower Gel**  
Gently cleanses  
and hydrates.  
5 fl. oz. 410-914  
reg. \$9  
**NOW \$4.49**



**Supreme Nourishment  
Enriching Coconut Oil  
Milk Lotion**  
Leaves skin feeling  
silky soft. 11.8 fl. oz.  
419-835  
reg. \$17  
**NOW \$9.49**





## SKIN SO SOFT PURE NATURE BODY COLLECTION

Sustainable\* packaging  
Eucalyptus mint scent

### Revitalizing Body Cream

Use after bath or shower.

12 fl. oz. **629-767**

reg. \$22

**\$16.99**

### Revitalizing Shower Gel

Richly lathering gel.

12 fl. oz. **415-170**

reg. \$22

**\$16.99**

### Revitalizing In-Shower Body Lotion

Apply onto wet skin after shower or bath.

8 fl. oz. **633-857**

reg. \$22

**\$16.99**

\*Shower Gel and Body Cream bottles: 95% post-consumer recycled material, excluding cap. Body Lotion tube: 55% post-consumer recycled material, excluding cap.



## SKIN SO SOFT PURE NATURE HAIR COLLECTION

Sustainable\* packaging  
Eucalyptus mint scent

### Nourishing Shampoo

With moisturizing panthenol and citric acid, known to help balance the scalp's pH.

12 fl. oz. **290-074**

reg. \$23

**\$17.99**

### Nourishing Conditioner

With panthenol. Hair looks smooth, healthy and shiny.

12 fl. oz. **290-089**

reg. \$23

**\$17.99**

### Intense Nourishing Hair Mask

Panthenol-infused. Hair looks smoother and stronger.

8 fl. oz. **290-131**

reg. \$23

**\$17.99**

\*Shampoo and Conditioner bottles: 95% post-consumer recycled material, excluding cap. Hair Mask tube: 55% post-consumer recycled material, excluding cap.



## ooh la lavender



\*Body Lotion contains jasmine essential oil.  
Body & Bath Oil and Sugar Scrub contain jasmine extract.

## SKIN SO SOFT CALMING LAVENDER

Infused with a superior blend of **lavender** and **chamomile** essential oils, plus **jasmine\*** oil and **extract**, for soft, smooth skin with a healthy-looking glow. **Calming lavender** scent.

### Body & Bath Oil

Antioxidant-infused with a luxe blend of lavender and chamomile essential oils, plus jasmine extract. Skin feels so soft and supple.

11.8 fl. oz. **511-354**

reg. \$32

**\$24.99**

### Sugar Scrub

Exfoliating scrub enhanced with a relaxing blend of essential oils and soothing allantoin. Skin looks and feels moisturized and smooth.

9 oz. net wt. **512-418**

reg. \$20

**\$15.99**

### Body Lotion

With sunflower seed oil to help skin feel soft and smooth, rosehip seed oil and shea butter to lock in moisture, plus hydrating hyaluronic acid and soothing aloe. Contains antioxidant-rich resveratrol, known to help skin look youthful. 24-hour moisturization.

11.8 fl. oz. **511-995** reg. \$22

**\$16.99**



**Fresh & Smooth  
Meadowfoam  
Facial Hair  
Removal Cream**  
Dermatologically  
tested. 1 fl. oz.  
**562-543**  
reg. \$13  
**\$9.99**



**Fresh & Smooth  
Body Hair  
Removal Cream**  
4.2 fl. oz.  
**562-467**  
reg. \$10  
**\$7.99**



**Acne-Prone Skin  
Foaming Cleanser**  
5 fl. oz.  
**041-647**  
reg. \$17  
**NOW \$9.49**



## facial bar soaps

With Skin So Soft signature oils  
and other active anti-aging ingredients.

**Best of  
K-Beauty**



**Skin So Soft Facial Bar  
Hyaluronic Acid<sup>†</sup> &  
Niacinamide<sup>†</sup>**  
Enriches skin  
with moisture.  
3.1 oz. net wt.  
**364-573** reg. \$6  
**\$4.99**

**Skin So Soft Facial Bar  
Salicylic<sup>\*\*</sup> & Lactic<sup>\*\*</sup> Acids**  
Gently exfoliates to  
help skin look softer  
and luxuriously smooth.  
3.1 oz. net wt.  
**364-569** reg. \$6  
**\$4.99**

**Skin So Soft Facial Bar  
Retinol<sup>††</sup> & Vitamin C<sup>†</sup>**  
Helps visibly even tone,  
brighten and enhance  
skin clarity.  
3.1 oz. net wt.  
**364-607** reg. \$6  
**\$4.99**

**Skin So Soft Facial Bar  
Collagen<sup>††</sup> & Goat Milk<sup>\*\*\*</sup>**  
Deeply hydrates.  
3.1 oz. net wt.  
**364-626** reg. \$6  
**\$4.99**

\*0.001%, \*\*0.0009%, †0.0001%, ††0.00001%, \*\*\*0.007%.

**Acne-Prone Skin  
Soothing Gel**  
6.1 fl. oz.  
**040-636**  
reg. \$20  
**NOW \$11.99**



**Acne-Prone Skin  
Exfoliating  
Body Wash**  
10.1 fl. oz.  
**041-556**  
reg. \$20  
**NOW \$11.99**



## Skin So Soft for ACNE-PRONE SKIN

Developed for all skin types  
with gently exfoliating salicylic  
acid. Suitable for daily use.  
Without synthetic fragrances.







**Moisture Therapy Intensive Healing & Repair All Over Rescue Balm Stick**  
24-hour moisturization in a convenient, mess-free, glide-on stick. Fragrance-free. Apply anywhere on body, face and even lips. Great on the go. .63 oz. net wt. **470-004** reg. \$18  
**\$13.99**



**Moisture Therapy Intensive Healing & Repair All Over Rescue Balm**  
24-hour moisturization for extra-dry skin. With soothing and smoothing avocado oil and shea butter. Apply anywhere on body, face and even lips to seal in moisture. Fragrance-free. 2.5 fl. oz. **419-840** reg. \$15  
**\$11.99**

**Moisture Therapy Intensive Healing & Repair Extra Strength Cream**  
24-hour moisturization. Fragrance-free. 5.3 oz. net wt. **224-982** reg. \$9  
**\$6.99**



**Moisture Therapy Intensive Healing & Repair Hand Cream**  
For extremely dry skin. Moisturizes through hand washings. Fragrance-free. 4.2 fl. oz. **845-982** reg. \$8  
**\$5.99**



**Moisture Therapy Balance + Soothe Body Wash**  
Softens as it gently cleanses. 13.2 fl. oz. **438-078** reg. \$23  
**NOW \$13.49**



**Moisture Therapy Balance + Soothe Body Lotion**  
Skin looks softer and healthier. 13.2 fl. oz. **438-082** reg. \$25  
**NOW \$14.99**



# need more? get more... with bonus-size lotions.

**Moisture Therapy Bonus-Size Body Lotion**  
Each, 33.8 fl. oz. reg. \$25  
**\$19.99 each**

**Intensive Healing & Repair Bonus-Size Body Lotion**  
72-hour moisture for extra-dry skin. Fragrance-free. **639-745**

**Daily Skin Defense Bonus-Size Body Lotion**  
Helps restore moisture to everyday dry skin. **725-793**

**Calming Relief Bonus-Size Body Lotion**  
Soothes and relieves dry, itchy skin. Fragrance-free. **639-802**





# IS IT HOT IN HERE?!

(or it is me?)

## NEW! Hit Pause

Look and feel your best through menopause and peri-menopause.

A cool rose-scented collection formulated with Superfood Amla Berry Extract.



Hot flash on the go?  
No sweat!

### Refreshing Wipes

Pre-moistened towelettes remove sweat and dirt from your face, hands and body, with no water or rinsing needed. Safe for external down-there places, armpits or anywhere you need to refresh. Rose scent. 30 wipes. 264-264 reg. \$13

\$9.99



Body craving  
moisture all over?  
Drink up.

### Hydrating Body Cream

Lightweight, fast-absorbing moisturizer with panthenol to help soothe skin and combat dryness, boost elasticity and reduce the appearance of crepiness. 6.7 fl. oz. 263-990 reg. \$22

\$16.99

Hot flash? Night sweats? Chill out.

### All Over Cooling Mist

Instant cooling refreshment for face or body to energize and hydrate. Spray anytime. 3.4 fl. oz. 264-336 reg. \$25

\$19.99



## new Organist Algae Collection for body



**97%**  
AGREED SKIN FEELS  
HYDRATED IN  
JUST ONE USE\*

**90%**  
AGREED SKIN LOOKS  
LESS CREPEY IN  
48 HOURS\*

### GREEN ALGAE COMPLEX

*Key ingredients for your body*



#### SEAWEED:

Known to combat dryness so skin feels soft and supple.



#### KELP:

A marine botanical that helps to intensely moisturize skin.



#### CHLORELLA:

Known to hydrate to help enhance skin's natural radiance.



#### HIJIKI:

A seaweed known to help moisturize for visibly glowing skin.



#### HYALURONIC ACID:

Helps deliver lasting hydration so skin looks soft and plump.



#### SQUALANE:

Helps hydrate, improve skin elasticity and visibly smooth lines.



JELLY BODY WASH  
is infused with  
Hydro Green Pearls that  
dissolve on contact  
for extra hydration.

# Replenish

and brighten the look of dry, dull skin



**NEW**

#### Organist Algae Jelly Body Wash

With skin-replenishing botanicals and algae, plus Hydro Green Pearls that dissolve on contact, to help hydrate and support moisture barrier as it cleanses. Softens and refreshes the look of dry, dull skin for a healthy-looking glow. 16.9 fl. oz. **286-520** reg. \$22

**\$16.99**

**NEW**

#### Organist Algae Whipped Body Cream

Helps deliver intense, lasting moisture for soft, supple, velvety-smooth skin and enhance natural radiance for a youthful-looking glow. Enriched with 10% squalane to help support skin's moisture barrier and visibly boost elasticity. 4.5 fl. oz. **286-591** reg. \$22

**\$16.99**





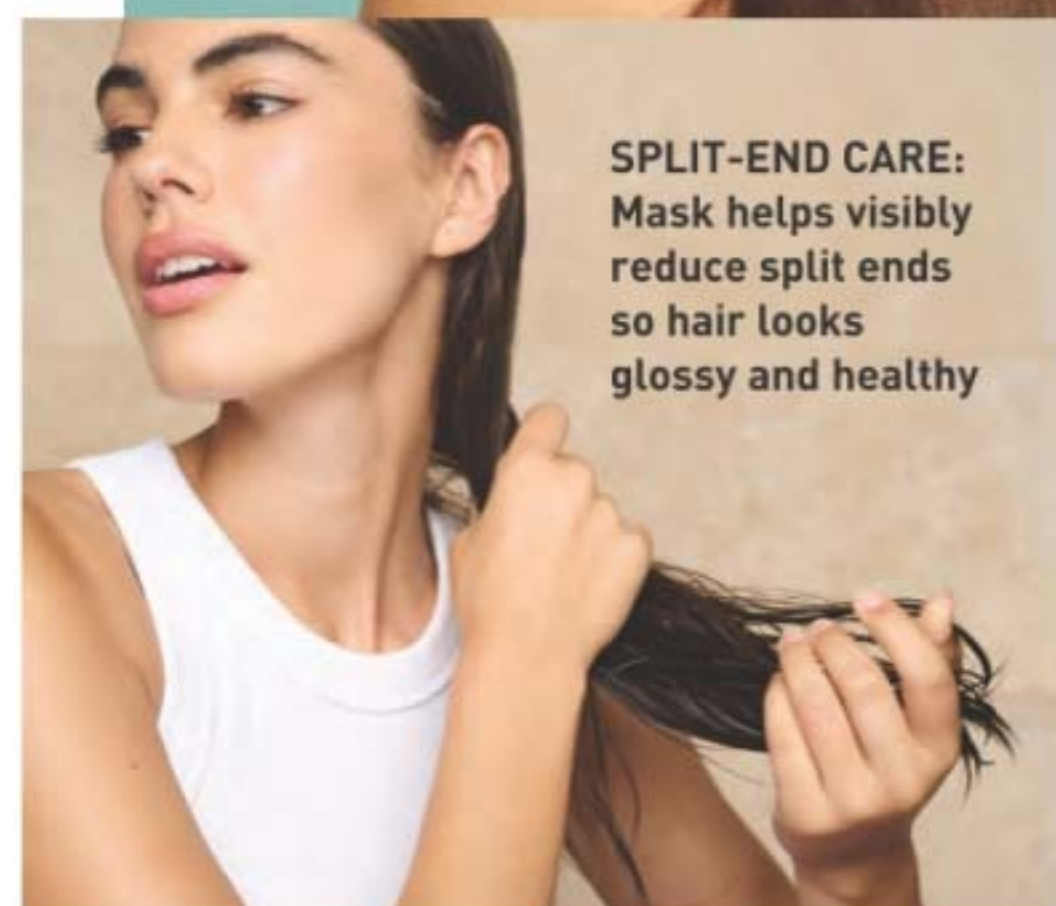
new Organist Algae Collection for hair

100%

AGREED HAIR  
LOOKS NOTICEABLY  
LESS FRIZZY\*

100%

AGREED HAIR  
FEELS SMOOTHER,  
STRONGER,  
HEALTHIER†



**SPLIT-END CARE:**  
Mask helps visibly  
reduce split ends  
so hair looks  
glossy and healthy

GREEN ALGAE  
COMPLEX for hair:

Seaweed, Kelp,  
Chlorella, Hijiki



# Quench dry, frizzy, thirsty strands



**NEW**

**Organist Algae  
Moisture Shampoo**

Lightweight jelly formula  
delivers an intense wave  
of deep hydration. Hair  
feels soft and nourished.  
Helps tame frizz and  
visibly reduce split ends  
for a sleek, polished look.  
Refreshes scalp.

16.9 fl. oz.  
286-410 reg. \$22

**\$16.99**

**NEW**

**Organist Algae  
Deep Moisture Hair Mask**

For deep moisture and  
frizz control. Perfect for  
dry hair, leaves strands  
feeling softer, stronger  
and frizz-free. Intensely  
hydrates with hyaluronic  
acid. Infused with hair-  
nourishing Hydro Green  
Pearls that dissolve on  
contact. 6.7 fl. oz.

286-462 reg. \$21

**\$15.99**



## Organist Rosemary + Mint | *strengthening*

- helps hydrate and revitalize the scalp so it feels refreshed, and helps support a thicker-, fuller-looking mane of hair
- rich in antioxidants to support healthy-looking hair and scalp



### Rosemary Mint

With rosemary and biotin, helps keep scalp and hair looking healthy. Refreshing, cooling peppermint helps scalp feel revitalized.

#### Strengthening Shampoo 542-974

#### Strengthening Conditioner 542-993

Each, 16.9 fl. oz.  
reg. \$22

**\$16.99 each**

### Rosemary Mint Scalp Strengthening Tonic

With rosemary, mint, biotin and caffeine. Scalp feels nourished and revitalized with a cooling sensation. Hair looks fuller, thicker, stronger. 5 fl. oz. **544-427**

reg. \$25

**\$19.99**

### Rosemary Mint Hair Strengthening Oil

2-in-1 daily-use oil for hair and scalp. With essential oils, 99% derived from plants, plus biotin. Hair feels fortified, nourished and refreshed. 2 fl. oz. **542-845**

reg. \$25

**\$19.99**

### Rosemary Mint Body Wash

Formulated with AHA/BHA/PHA and panthenol. 16.9 fl. oz. **544-446**

reg. \$22

**\$16.99**

### Gua Sha Scalp Massager

For scalp, neck and body. Helps improve circulation for visibly strong, healthy hair. 100% wood. **542-960**

reg. \$25

**\$19.99**



## dry shampoo on the go

Travel-friendly scalp puff with revitalizing rosemary and biotin



BEFORE



AFTER



Images are simulations for illustrative purposes only. Individual results may vary.



**NEW**

### Organist Rosemary Mint with Biotin Dry Shampoo Puff

Easy-to-use, mess-free puff applicator. Fast-acting formula with a revitalizing blend of rosemary, mint and biotin absorbs excess oil on scalp and roots. Hair looks clean and fresh between washes. Formulated without sulfates and parabens. 0.28 fl. oz. **078-787**

reg. \$25

**\$19.99**



## Organist Rice Water | *nourishing*

- a time-honored Asian beauty secret
- rich in amino acids, vitamins B and E and minerals
- helps reduce breakage and split ends to smooth hair and improve shine and manageability



add moisture to dry, damaged hair for a healthy-looking shine

### CLEANSE

#### Damage Care Shampoo

With biotin, ceramide, protein and 17 amino acids to deeply nourish each strand, restoring strength and resilience. Enriching rice water helps transform dry hair into a silky mane. 16.9 fl. oz. 381-803 reg. \$22

**\$16.99**

### TREAT

#### Damage Care Treatment

Perfect for hair in need of hydration and repair. Biotin, protein and 17 amino acids help nourish each strand from within. Hyaluronic acid and collagen help smooth hair for resilience and softness. 6.7 fl. oz. 381-860 reg. \$22

**\$16.99**



jasmine  
and  
freesia  
scent

Nourishing  
Oil Layer

Hydrating  
Essence Layer



BEFORE



AFTER

nourish + hydrate  
hair with an uplifting  
fragrance mist

#### Moisture Replenish Hair Mist

Two-layer mist: a hydrating essence plus five plant oils, including jojoba and argan oils, for deep moisturization. Rice water, biotin, ceramide, protein and amino acids help revitalize, nourish and soften dry, damaged hair. Shake well before use. Use on damp or dry hair. Fresh floral scent. 2.7 fl. oz. 381-985 reg. \$25

**\$19.99**

Images show results using Organist Rice Water Moisture Replenish Hair Mist as directed. Mist was applied multiple times on dry hair. Minimal styling for consistency. Results may vary.

### FOR BODY

With **antioxidants** ideal for helping to moisturize dry skin

### CLEANSE

#### Nourishing Body Wash

With soap derived from olive oil. Contains panthenol and hyaluronic acid. Helps skin appear soft and moisturized. 16.9 fl. oz. 382-097 reg. \$19

**\$14.99**

### NOURISH

#### Nourishing Body Milk

With plant-derived moisturizer and plant-derived oil (squalane) to help hydrate and nourish dry skin. Easily absorbed. Nongreasy. 10 fl. oz. 382-336 reg. \$19

**\$14.99**





## Organist Apple Cider Vinegar | *clarifying*

- helps remove oil and buildup accumulated on scalp and hair
- a popular rinse-off method known to help maintain the scalp's pH balance and add shine to hair

### Clarifying Shampoo

For oily hair. Helps clarify and nourish scalp and hair for healthy-looking shine as it cleanses. 16.9 fl. oz. **482-650** reg. \$22

### Clarifying Conditioner

For oily, dull hair. Helps clarify and nourish scalp and hair for a healthy-looking shine. 16.9 fl. oz. **482-664** reg. \$22

**\$16.99 each**

### Clarifying Water Treatment

Rinse-out treatment infused with collagen and hyaluronic acid. Formulated to clarify hair and help it look naturally soft instantly with a healthy shine. 6 fl. oz. **482-717** reg. \$19

**\$14.99**

### Scalp Tonic

Leave-on scalp tonic with a blend of 10 natural herbs. Helps dissolve oily buildup and revitalizes scalp.

5 fl. oz. **482-721** reg. \$24

**\$18.99**



## FOR BODY

### Apple Cider Vinegar Body Wash

For normal to oily skin. It blends apple cider vinegar extract with panthenol so skin feels refreshed and nourished. 16.9 fl. oz.

**482-740** reg. \$19

**\$14.99**



### Apple Cider Vinegar Exfoliating Body Scrub

With panthenol and AHA/BHA/PHA, it gently exfoliates dead skin cells to help skin look and feel refreshed all over. 6.7 fl. oz. **482-846** reg. \$19

**\$14.99**



## Organist Botanical Castile Soap

Daily vegan washes for face and body infused with soap made from olive oil and formulated without parabens, silicone oil or sulfates. Leaves skin feeling refreshed, revitalized and luxuriously moisturized while it cleanses.

### revitalize

#### FOR OILY SKIN

**Tea Tree & AHA BHA**  
Controls oil as it deeply cleanses and refreshes. Fresh herbal scent. 16.2 fl. oz. **348-115** reg. \$19

**\$14.99**

### moisturize

#### FOR DRY SKIN

**Rose Water & Hyaluronic Acid**  
Low-pH formula helps replenish soothing moisture. Crisp floral scent. 16.2 fl. oz. **348-100** reg. \$19

**\$14.99**

### NEW

### soothe

#### FOR NORMAL SKIN

**Lavender Oil & Vitamin E**  
With ingredients that help skin feel refreshed and promote a relaxing experience. Calming lavender scent. 16.2 fl. oz. **048-398** reg. \$19

**\$14.99**



Best of  
K-Beauty



**SENSES AQUATIC BREEZE**

**Bubble Bath**  
24 fl. oz.  
746-388  
reg. \$16  
**\$12.99**

**Body Scrub**  
8.5 oz. net wt.  
746-426  
reg. \$24  
**\$18.99**

**SENSES SUN-KISSED COCONUT**

**Bubble Bath**  
24 fl. oz.  
746-369  
reg. \$16  
**\$12.99**

**Body Scrub**  
8.5 oz. net wt.  
746-407  
reg. \$24  
**\$18.99**

**soak away stress**

**Senses Bubble Bath**  
24 baths in every bottle.  
Each, 24 fl. oz. reg. \$16  
**\$12.99**



Cherry Blossom  
929-211

Vanilla Cream  
875-669

Cucumber Melon  
688-950

Sensitive Skin  
875-400

Orange & Honeysuckle  
633-952

Lily & Honeysuckle Blossom  
805-524

Lavender Garden  
381-799

**SENSES STRAWBERRY SUNSET**

**Bubble Bath**  
24 fl. oz. 746-354  
reg. \$16  
**\$12.99**

**Body Scrub**  
8.5 oz. net wt. 746-392  
reg. \$24  
**\$18.99**

**SENSES CARAMEL SOL**

**Bubble Bath**  
24 fl. oz.  
746-373  
reg. \$16  
**\$12.99**

**Body Scrub**  
8.5 oz. net wt.  
746-411  
reg. \$24  
**\$18.99**



**Senses Lip Balm Strawberry**  
554-219  
.14 oz. net wt.  
reg. \$3.50  
**\$2.49**



**Senses Shower Gel Fresh Cucumber & Melon**  
5 fl. oz.  
400-716  
reg. \$8  
**\$5.99**



**Senses Shower Gel Blushing Cherry Blossom**  
5 fl. oz.  
921-847  
reg. \$8  
**\$5.99**



**Senses Lip Balm Cherry**  
554-223  
.14 oz. net wt.  
reg. \$3.50  
**\$2.49**



**Senses Shower Gel Silky Vanilla**  
5 fl. oz.  
248-140  
reg. \$8  
**\$5.99**



**Senses Shower Gel Juicy Pomegranate & Mango**  
5 fl. oz.  
248-155  
reg. \$8  
**\$5.99**





Best of  
K-Beauty

AN ORAL CARE  
INNOVATION:

## HIMALAYA PINK SALT

For a healthy-looking, whiter, brighter smile. Enriched with Himalayan Pink Salt.

### Himalaya Pink Salt Whitening Toothbrush (Medium)

Bristles are infused with Himalayan pink salt for effective cleansing and a gentle brightening effect. Medium-sized brush. High-tension bristles penetrate narrow gaps. **729-359** reg. \$8 **\$5.99**



### Himalaya Pink Salt Intensive Whitening Toothbrush (Large)

Bristles are infused with Himalayan pink salt for effective cleansing and a brightening effect. Large-sized brush. High-tension bristles penetrate narrow gaps. **035-812** reg. \$9 **\$6.59**



### Himalaya Pink Salt Purple Whitening Toothbrush

Purple color fades as bristles wear, reminding you to replace. Clinically tested to remove 4X more interdental plaque.\* Bristles with 2X the elasticity clean narrow gaps between teeth and the gum line. **383-165** reg. \$9 **\$6.59**

\*Compared to LG H&H regular toothbrush with soft bristles.



### Himalaya Pink Salt Intensive Whitening Toothpaste (with Fluoride) 3-Piece Pack

Clinically tested to whiten teeth in one week; 9X more than regular toothpaste without SHMP. 24-hour stain resistance. With sodium fluoride, an anticavity ingredient that helps strengthen enamel. Pink paste. Spearmint flavor. Each, 4.2 oz. net wt. **729-689** reg. \$36

**\$26.99**  
the 3-piece pack



### Himalaya Pink Salt Purple Color Corrector + Intensive Whitening Toothpaste (with Fluoride)

Purple toothpaste with advanced color-correcting power. Clinically tested to reduce yellow stains on teeth by 2X after one use; 9X more than regular toothpaste. Visibly whiter teeth in one week. 24-hour stain resistance. Vanilla mint flavor. Formulated without parabens, gluten, phthalates and triclosan. 3.5 oz. net wt. **383-624** reg. \$17 **\$12.99**



### Himalaya Pink Salt Whitening Natural Salt Toothpaste (Fluoride-Free)

Helps reduce plaque, gently whiten teeth and naturally freshen breath. Contains essential minerals and bifidus essences. Pink gel. Spearmint flavor. Formulated without parabens, gluten and triclosan. 3.9 oz. net wt. **943-112** reg. \$12 **\$8.79**





**Foot Works Intensive Moisture Foot Cream**  
Suitable for diabetics.  
2.5 fl. oz.  
069-016  
reg. \$12  
**\$9.49**



**Foot Works Arthritis Achy Foot and Muscle Cream**  
Contains glucosamine and chondroitin.  
2.5 fl. oz.  
208-400  
reg. \$12  
**\$9.49**



**Foot Works Maximum Strength Cracked Heel Cream**  
Transforms the look and feel of dry, cracked heels.  
2.5 fl. oz.  
086-762  
reg. \$12  
**\$9.49**



**Foot Works Intensive Callus Cream**  
Softens and moisturizes dry, rough skin.  
3.2 oz. net wt.  
851-310  
reg. \$12  
**\$9.49**



**Foot Works Deodorizing Spray**  
Can also be used in footwear.  
3.5 oz. net wt.  
313-236  
reg. \$15  
**\$11.99**



**Foot Works Pedicure Tool**  
592-712  
reg. \$12  
**\$9.49**  
4 in 1:  
• Fine-grain file  
• Metal file  
• Pumice  
• Brush



**Foot Works Pedicure Kit**  
Case, 3½" L x 4¾" W.  
121-029  
reg. \$15  
**NOW \$8.99**  
Kit includes:  
• Nail clipper  
• Toenail clipper  
• Scissors  
• Small nail file  
• Cuticle pusher



**Bug Guard Plus Picaridin Aerosol Spray**  
4 oz. net wt.  
315-243  
reg. \$25  
**\$19.99**



**make the great outdoors yours**

Our DEET-free repellents protect your family without chemicals that feel harsh on skin. **Bug Guard** repels deer ticks that may carry and transmit Lyme disease.



**Bug Guard Plus Picaridin Family-Size Pump Spray**  
8 fl. oz.  
510-195  
reg. \$25.50  
**\$19.99**



**Bug Guard Plus Picaridin Pump Spray**  
4 fl. oz.  
510-161  
reg. \$19.25  
**\$13.99**



**Bug Guard Plus Picaridin Towelettes**  
Each, 9" L x 5½" W, .3 fl. oz.  
269-562 reg. \$16  
**\$12.99 pack of 8**



**Bug Guard Plus IR3535® Expedition Aerosol Spray SPF 28**  
Repels mosquitoes that may transmit West Nile virus for 8 hours. Repels deer ticks for 12 hours.  
4 oz. net wt.  
521-370  
reg. \$25  
**\$19.99**



**Bug Guard Plus IR3535® Gentle Breeze SPF 30 Lotion**  
4 fl. oz.  
781-940  
reg. \$19  
**\$14.99**



**Bug Guard Plus Anti-Itch Spray**  
Provides temporary itch relief from insect bites. Does not repel insects. Use as directed. 2 fl. oz.  
510-032  
reg. \$15  
**\$10.99**





**Veilment  
Glacial Water  
Cooling Body Scrub  
& Cleanser**  
13.5 fl. oz.  
573-480  
reg. \$18  
**NOW \$10.49**



**Veilment  
Dead Sea Salt  
Body Scrub  
& Cleanser**  
13.5 fl. oz.  
781-992  
reg. \$18  
**NOW \$10.49**



**Veilment  
Black Rose  
Body Scrub  
& Cleanser**  
13.5 fl. oz.  
707-969  
reg. \$18  
**NOW \$10.49**



**Veilment  
Himalaya Pink Salt  
Exfoliating Soap**  
5.3 oz. net wt. 260-440  
reg. \$8  
**NOW \$4.49**



**Avon Shower Brush**  
Long handle to reach  
down back. Brush helps  
remove dead skin cells  
as it cleanses. Back of  
brush features massage  
nubs. Non-slip, comfort  
handle has a convenient  
hanging loop. 904-727  
reg. \$11  
**\$8.49**

**Exfoliation Mitt**  
Microfiber jacquard, with  
nylon/spandex cuff. 439-734  
reg. \$14  
**\$10.99**



**Roll-On  
Anti-Perspirant  
Deodorant**  
Each, 2.6 fl. oz.  
reg. \$6.25  
**\$4.99 each**

**Perfumed Liquid Deodorant**  
Soft floral scent. Aluminum-free.  
Fast-drying. Easy fingertip application.  
2 fl. oz. 889-915  
reg. \$10  
**\$7.49**



**Avon Microbiome by Reach®  
Hygiene Deodorant Stick**  
Floral citrus scent. Aluminum-  
free. 24-hour odor protection.  
2.65 oz. net wt.  
524-528  
reg. \$16  
**\$12.99**







## ROOTS? NEVER.

### Root Touch-Up

Instantly covers roots and bare spots. With black bean and ginseng. Built-in mirror. Each, .25 oz. net wt. reg. \$20

**\$15.99 each**



Reddish  
Brown  
243-627

Light  
Brown  
244-642

Dark Brown  
245-213

Black  
245-251



Avon  
Detangling  
Comb  
504-820  
reg. \$9  
**\$6.49**

Avon  
Blow-Dry  
Round Hairbrush  
504-800  
reg. \$20  
**\$15.99**

Avon  
Detangling  
Hairbrush  
504-815  
reg. \$14  
**\$10.99**

Avon  
Compact  
Hairbrush  
504-743  
reg. \$11  
**\$8.49**



Elastine  
PropoliThera  
Damage Repair  
Shampoo  
16.9 fl. oz.  
053-082  
reg. \$20  
**NOW \$11.99**



Elastine  
PropoliThera  
Damage Repair  
Conditioner  
16.9 fl. oz.  
638-681  
reg. \$20  
**NOW \$11.99**



Best of  
K-Beauty

Elastine PropoliThera  
Hair Deep Conditioning  
Treatment Cap  
053-761  
reg. \$9  
**NOW  
\$4.99**



Elastine  
PropoliThera  
Hair Oil Serum  
5.7 fl. oz.  
895-190  
reg. \$23  
**NOW \$12.49**







**Dr. Groot Premium Scalp Cleansing Brush**  
Helps reinvigorate scalp health and stimulate circulation.  
065-776 reg. \$20  
**\$16**



**Dr. Groot Anti-Dandruff Scalp Care Shampoo**  
Contains 3% salicylic acid, biotin, caffeine, rosemary and menthol. No silicones. 10.1 fl. oz.  
451-412 reg. \$30  
**\$22.99**



**Dr. Groot Scalp Fortifying Serum Treatment**  
Moisturizes and helps support healthy hair roots. 6.7 fl. oz.  
782-271 reg. \$35  
**\$29**



**Dr. Groot Scalp Fortifying Hair-Thickening Shampoo**  
With coconut oil, cleanses as it helps moisturize dry scalp and hair. 13.5 fl. oz.  
778-014 reg. \$35  
**\$29**



**Dr. Groot Professional Bonding System 01 Bond Fortifying Shampoo**  
Helps fortify hair from the roots and visibly restore smoothness. 13 fl. oz. 701-607  
**\$30**



**Dr. Groot Professional Bonding System 02 Keratin Water Treatment**  
Water-to-cream formula. Hair looks instantly smoother. Use 2X-3X a week. 6.7 fl. oz.  
701-611  
**\$30**



**Dr. Groot Professional Bonding System 03 Bond Fortifying Conditioner**  
Instantly helps minimize frizz.\* 8.4 fl. oz. 701-865  
**\$30**  
\*Based on a clinical test of 19 hair tresses.



**Dr. Groot Professional Bonding System 04 Bond Fortifying Instant Repair Serum**  
Restorative leave-in serum. Apply to damp or dry hair. 4.2 fl. oz.  
702-130  
**\$30**

## WANT GREAT HAIR? START AT THE SCALP.

### Dr. Groot Scalp Revitalizing Solution

Think of scalp care as an extension of skin care. With **biotin** and **capsulated prebiotics**, these formulas offer a uniquely customized solution that gets to the root of your problem.



**Scalp Revitalizing Solution Hair Thickening Shampoo**  
Helps hair look thicker and fuller. Infused with biotin and prebiotics. 13 fl. oz.  
715-064  
**\$30**

**Scalp Revitalizing Solution Purifying Clay Shampoo**  
Instantly purify roots, hydrate dry ends. With three kinds of clay (white, herbal, glacial) plus biotin and salicylic acid. 13 fl. oz.  
715-098  
**\$30**

**Scalp Revitalizing Solution Scalp Relief Tonic**  
Helps hydrate dry scalp. With calming chamomile, moisturizing niacinamide and cooling menthol. 4.73 fl. oz.  
717-110  
**\$30**

**Scalp Revitalizing Solution Scalp Soothing Shampoo**  
Helps refresh, moisturize and comfort your scalp. With biotin and cica extract. 13 fl. oz.  
715-083  
**\$30**

**Scalp Revitalizing Solution Miracle in Shower Treatment**  
Hair looks smoother and healthier instantly. With nourishing arginine, panthenol, niacinamide and salicylic acid. 8.4 fl. oz.  
715-451  
**\$30**





## NEW

### ❖ Denim Jacket

Vintage wash oversized denim jacket. Features side seam pockets, front chest pockets and faux shearling collar. Cotton/polyester/rayon/spandex. Center back length: 27½" on all sizes. Machine wash, line dry. Imported.

XS(0-2) 535-775

S(4-6) 535-828

M(8-10) 535-870

L(12-14) 535-890

XL(16) 536-126

1X(18W-20W) 537-687

2X(22W-24W) 537-706

3X(26W-28W) 537-869

reg. \$74.99

**\$59.99**

4-Pack Fall Tees sold on page 137.

OVERSIZED  
DENIM  
JACKET  
with side  
seam  
pockets

## forever faves

A denim jacket with a cool vintage wash, plus a bag with secret storage and coordinating boots are wear-now, wear-everywhere essentials you'll love to live in year after year.

## NEW

### ❖ Studded Butler Bag

Merlot-colored leatherlike tote bag with stud details on front and top zip-closure. Features removable organizer with dividers, inside slotted pockets for additional organization and outside zip-pocket on back. Body: man-made materials. Lining: 100% polyester. 17" L x 6" W x 13¼" H. Center handle drop: 11" L. Imported. 535-670

reg. \$64.99

**\$49.99**



4-Pack Fall Tees sold on page 137.

The beloved  
Butler Bag is back!  
The stylish solution to  
organization on the go.

Features removable organizer.



Smart design and hidden storage helps keep everything in its place.





**NEW**❖ **Casual Chelsea Boot**

Black leatherlike boot with outside merlot-colored elastic gore and inside zipper for easy on/off. Treaded rubber outsole. Man-made materials. Ankle-height-length shaft. 1½" L lug sole. Half sizes should size up. Imported.

6 535-684 8 535-703 10 535-722

7 535-699 9 535-718 11 535-756

reg. \$53.99

**\$42.99**

Studded Butler Bag sold on page 129. Pairs perfectly with the Casual Chelsea Boot.



cool & crisp

ELASTIC GORE inset and inside zipper for easy on/off

**NEW**❖ **Button Detail Shirt**

Ivory V-neck shirt with front button placket, chest pockets and long sleeves. Features side slits with functional button detailing. Polyester/rayon/linen.

Center back length: 27" on M; 28" on 1X. Machine wash, line dry. Imported.

XS(0-2) 538-019

S(4-6) 538-057

M(8-10) 562-414

L(12-14) 562-429

XL(16) 562-433

1X(18W-20W) 562-448

2X(22W-24W) 562-471

3X(26W-28W) 600-440

reg. \$46.99

**\$36.99**

SIDE SLITS with functional buttons



SATIN FINISH and classic pull-on styling

**NEW**❖ **Shiny Legging**

Black pull-on leggings with elastic waistband. Features a soft-shine satin finish and classic fit. Polyamide/spandex.

Inseam: 28" on all sizes. Machine wash, dry flat. Imported.

XS(0-2) 562-486

S(4-6) 565-030

M(8-10) 566-553

L(12-14) 566-610

XL(16) 568-670

1X(18W-20W) 568-690

2X(22W-24W) 568-704

3X(26W-28W) 569-060

reg. \$46.99

**\$36.99**



**NEW**❖ **Grid Print Dress**

Black/white/golden yellow grid-print dress with  $\frac{3}{4}$ -length sleeves and lining at skirt. Features V-neck with ruffle collar and fabric self-tie belt at waist. Body: polyester/spandex. Lining: 100% polyester. Center back length: 40" on M; 40½" on 1X. Machine wash, line dry. Imported.

XS(0-2) 569-165

S(4-6) 569-170

M(8-10) 569-199

L(12-14) 569-222

XL(16) 569-241

1X(18W-20W) 600-249

2X(22W-24W) 600-416

3X(26W-28W) 600-469

reg. \$53.99

**\$42.99**

Circle of Elegance Collection  
sold on page 145.

V-NECK  
with  
ruffle  
collar

pattern play

**NEW**❖ **2-Pack Mock Neck Shirts**

Includes black/white zebra-print and merlot-colored animal-print long-sleeve tops with mock neck. Polyester/spandex. Center back length: 26½" on M; 27½" on 1X. Machine wash and dry. Imported.

reg. \$42.99

**\$34.99**

XS(0-2) 600-492

S(4-6) 600-545

M(8-10) 600-550

L(12-14) 600-640

XL(16) 600-784

1X(18W-20W) 600-799

2X(22W-24W) 600-803

3X(26W-28W) 600-841

Shiny Legging sold on page 131.



## cool & comfy combos

Easy-wearing neutrals with  
complementary stripes,  
plus cozy-meets-sporty pairings...  
and bring on the tees, please.

### ❖ Striped Sweatshirt

Black/cream stripe terry sweatshirt with ribbed collar and cuffs and side slits. 100% cotton. Center back length: 23½" on M; 24½" on 1X. Machine wash, dry flat. Imported.

XS(0-2) 464-533

S(4-6) 464-662

M(8-10) 464-830

L(12-14) 464-844

XL(16) 464-859

1X(18W-20W) 464-878

2X(22W-24W) 465-070

3X(26W-28W) 465-104

reg. \$46.99

**\$36.99**

### ❖ Side Stripe Trouser

Black trousers with cream side stripe. Features button front, side seam pockets and elastic-back waist. Polyester/spandex. Inseam: 30" on all sizes. Machine wash, line dry. Imported.

XS(0-2) 465-195

S(4-6) 465-200

M(8-10) 465-248

L(12-14) 465-362

XL(16) 465-377

1X(18W-20W) 465-396

2X(22W-24W) 465-802

3X(26W-28W) 465-836

reg. \$44.99

**\$34.99**

CONTRAST  
cream  
side  
stripe



## soft wear

Paired with  
whisper white  
4-Pack Fall  
Tees sold on  
page 137.



TWO FRONT  
pockets



FLARED  
LEG  
with  
zipper  
slits



### ❖ Flared Legging

Blue classic sporty leggings with elastic waistband. Flared leg features zipper side slits at ankle. Polyamide/spandex. Inseam: 30" on all sizes. Machine wash, dry flat. Imported.

XS(0-2) 466-957

S(4-6) 467-714

M(8-10) 469-406

L(12-14) 471-656

XL(16) 472-208

1X(18W-20W) 472-580

2X(22W-24W) 472-595

3X(26W-28W) 472-614

reg. \$49.99

**\$39.99**

### ❖ Cozy Cardigan

Smoke grey soft marled open-front cardigan with two front pockets. Polyester/spandex. Center back length: 36" on M; 37" on 1X. Machine wash, line dry. Imported.

XS(0-2) 465-855

S(4-6) 465-874

M(8-10) 465-893

L(12-14) 465-908

XL(16) 465-931

1X(18W-20W) 465-965

2X(22W-24W) 466-043

3X(26W-28W) 466-593

reg. \$53.99

**\$42.99**

Celestial Spark Necklace and Earring Set sold on page 150.

Paired with whisper white 4-Pack Fall Tees sold on page 137.



## one hit wonder

Look effortlessly chic with just one piece!

**BOAT NECKLINE** plus side slits and fabric self-tie belt

❖ **Boat Neck Dress**  
Heather grey dress with boat neckline, long sleeves and side slits. Features fabric self-tie belt at waist. Cotton/polyester. Center back length: 36" on all sizes. Machine wash and dry. Imported.  
XS(0-2) **473-405**  
S(4-6) **473-477**  
M(8-10) **473-534**  
L(12-14) **473-568**  
XL(16) **473-572**  
1X(18W-20W) **473-663**  
2X(22W-24W) **473-678**  
3X(26W-28W) **473-682**  
reg. \$64.99  
**\$49.99**

Boho Wanderer Hoop Earrings and Semi-Precious Keepsake Locket sold on pages 151 & 148.



**4-PACK SET**

## tees with ease

❖ **4-Pack Fall Tees**  
Includes mocha animal-print, mocha, teal blue and whisper white classic crew-neck tees with front chest pocket and short sleeves. Cotton/polyester. Center back length: 25" on M; 27½" on 1X. Machine wash and dry. Imported.  
XS(0-2) **472-834** XL(16) **473-333**  
S(4-6) **473-003** 1X(18W-20W) **473-348**  
M(8-10) **473-041** 2X(22W-24W) **473-352**  
L(12-14) **473-238** 3X(26W-28W) **473-371**  
reg. \$49.99

**\$44.99 the pack**

(Mocha) Violet Ivy Ombré Earrings sold on page 145.

APPAREL SIZE CHART			
SIZE	BUST	WAIST	HIP
<b>XS</b> 0/2	30.5"-32"	23.5"-25"	32.5"-34"
<b>S</b> 4/6	33.5"-35"	26.5"-28"	35.5"-37"
<b>M</b> 8/10	36.5"-38"	29.5"-31"	38.5"-40"
<b>L</b> 12/14	39.5"-41"	32.5"-34"	41.5"-43"
<b>XL</b> 16	43"-44"	35.5"-36.5"	44.5"-45.5"
<b>1X</b> 18W/20W	46.5"-48.5"	39"-41"	48"-50"
<b>2X</b> 22W/24W	50.5"-52.5"	43"-45"	52"-54"
<b>3X</b> 26W/28W	54.5"-56.5"	47"-49"	56"-58"



Contour Links Earring Set sold on page 150.

FASHION



**CLASSIC CREW-NECK** tees with front pocket





**2-PACK**

## twice as nice

❖ **2-Pack Long-Sleeve Tee**  
Includes ivory and cherry long-sleeve tees with scoop neckline. Cotton/spandex. Center back length: 23" on M; 25" on 1X. Machine wash and dry. Imported.

XS(0-2)	272-440
S(4-6)	273-098
M(8-10)	273-193
L(12-14)	273-576
XL(16)	275-636
1X(18W-20W)	277-457
2X(22W-24W)	278-578
3X(26W-28W)	278-654

reg. \$49.99  
**\$39.99 the pack**



❖ **Lightweight Trench Coat**  
Black trench coat with front button closure and removable fabric self-tie belt at waist. Features cherry-colored lining. Body and lining: 100% polyester. Center back length: 36" on all sizes. Machine wash, line dry (remove belt before washing). Imported.

XS(0-2)	264-738
S(4-6)	264-757
M(8-10)	264-780
L(12-14)	264-833
XL(16)	264-962
1X(18W-20W)	265-002
2X(22W-24W)	265-199
3X(26W-28W)	265-806

reg. \$64.99  
**\$49.99**



❖ **Tassel Clutch**  
Cherry faux-leather textured clutch with top zip-closure and inside zip-pocket. Features side tassels, goldtone hardware and handle piece with functional snap closure (not removable). Man-made materials. Lining: 100% polyester. 9½" L x 4¼" W x 5¼" H. Handle drop: 4¼" L. Imported. **270-687**  
reg. \$42.99  
**\$32.99**



❖ **Animal-Print Dress**  
Animal-print dress with collar, button front and long sleeves. Features removable fabric self-tie belt at waist. Polyester/spandex. Center back length: 48½" on M; 49½" on 1X. Machine wash, line dry (remove belt before washing). Imported.

XS(0-2)	264-340	L(12-14)	264-522	2X(22W-24W)	264-670
S(4-6)	264-355	XL(16)	264-609	3X(26W-28W)	264-719
M(8-10)	264-360	1X(18W-20W)	264-647		

reg. \$49.99  
**\$39.99**

Bold Chain Luxe Necklace, Rippled Flow Hoop Earrings and Goldtone Signet Ring Set, sold on page 152.



❖ **Roll-Sleeve Button-Down Top**  
Ivory satin button-down top with adjustable roll-tab sleeves. Polyester/spandex. Center back length: 27" on M; 28" on 1X. Machine wash, line dry. Imported.

XS(0-2)	265-859
S(4-6)	265-863
M(8-10)	266-802
L(12-14)	267-244
XL(16)	267-320
1X(18W-20W)	268-293
2X(22W-24W)	268-570
3X(26W-28W)	268-585

reg. \$44.99  
**\$34.99**

❖ **Faux Suede Belted Pant**  
Burnt sienna faux-suede pull-on pant with front pockets and removable fabric self-tie belt. Straight-leg fit. Polyester/spandex. Inseam: 28" on all sizes. Machine wash, line dry (remove belt before washing). Imported.

XS(0-2)	268-604	L(12-14)	269-471	2X(22W-24W)	269-543
S(4-6)	268-700	XL(16)	269-505	3X(26W-28W)	269-581
M(8-10)	269-448	1X(18W-20W)	269-510		

reg. \$56.99  
**\$44.99**

Luminous Tides Link Collection sold on page 155.



**A. ❖ Lace-Up Sneaker**

White leatherlike lace-up sneaker with perforated floral design. Cushioned insole. Rubber outsole. Man-made materials. Imported.

6 883-644 9 883-955  
7 883-659 10 883-960  
8 883-850 11 884-067  
reg. \$46.99

**\$36.99**

**B. ❖ 2-Pack Dresses\***

Two-pack classic T-shirt dresses in turquoise and turquoise/white stripe. Features round neckline and short sleeves. Solid-colored dress: polyester/rayon/spandex. Striped dress: polyester/cotton/spandex. Center back length: 37" on M; 39" on 1X.

XS(0-2) 884-803 XL(16) 885-298  
S(4-6) 884-822 1X(18W-20W) 885-374  
M(8-10) 884-841 2X(22W-24W) 885-389  
L(12-14) 885-192 3X(26W-28W) 885-431  
reg. \$49.99

**\$39.99 the pack**

**C. ❖ Men's Polo Shirt**

Classic polo shirt with short sleeves and two-button placket. Features rib trim on sleeves and collar. 100% cotton. Center back length: 29" on M; 32" on XXL. Machine wash and dry. Imported.

reg. \$32.99

**\$24.99 each**

Grey:	Navy:
S 765-587	S 765-390
M 765-610	M 765-405
L 765-663	L 765-439
XL 765-678	XL 765-443
XXL 765-754	XXL 765-740

**D. ❖ Summer Rib 2-Piece Set**

Coral ribbed two-piece set. Top features elastic scoop neck that can be worn off the shoulder, plus elastic at bottom of sleeves and hem. Pull-on wide-leg pant has an elastic waistband. Polyester/spandex. Center back length: 19" on M; 21" on 1X. Inseam: 29" on all sizes. Machine wash and dry. Imported.

XS(0-2) 883-242 XL(16) 883-371  
S(4-6) 883-280 1X(18W-20W) 883-405  
M(8-10) 883-295 2X(22W-24W) 883-568  
L(12-14) 883-329 3X(26W-28W) 883-572  
reg. \$56.99

**\$44.99 the set**

\*Machine wash, line dry. Imported.



Soft Sands  
Beaded Collection  
sold on page 158.

**A. ❖ Tie-Front Button-Down Top\***

Red linen-blend top with V-neck, button placket, front tie detail and bell-shaped sleeves. Linen/rayon. Center back length: 20½" on M; 22½" on 1X. Line dry. XS(0-2) 763-728 XL(16) 763-766  
S(4-6) 763-732 1X(18W-20W) 763-770  
M(8-10) 763-747 2X(22W-24W) 763-785  
L(12-14) 763-751 3X(26W-28W) 763-790  
reg. \$49.99

**\$39.99**

**B. ❖ Lace-Front Sleeveless Top\***

White lace-front top with jersey-knit trim and back panel. Features front placket with functional buttons and a sleeveless silhouette with front lining. Lace body: cotton/polyester. Back panel/trim: polyester/rayon/spandex. Lining: 100% polyester. Center back length: 26" on M; 27" on 1X.

XS(0-2) 887-669 XL(16) 887-817  
S(4-6) 887-673 1X(18W-20W) 887-931  
M(8-10) 887-688 2X(22W-24W) 887-946  
L(12-14) 887-802 3X(26W-28W) 887-984  
reg. \$44.99

**\$34.99**

**C. ❖ Two-Tone Stripe Shirt\***

Blue/white stripe linen-blend shirt features button detail on front placket and on cuffed short sleeves. Cotton/linen. Center back length: 25" on M; 26½" on 1X.

XS(0-2) 886-199 XL(16) 886-309  
S(4-6) 886-218 1X(18W-20W) 886-351  
M(8-10) 886-241 2X(22W-24W) 886-457  
L(12-14) 886-260 3X(26W-28W) 886-476  
reg. \$46.99

**\$36.99**

**D. ❖ Ruffle Bottom Skirt\***

Blue lightweight skirt features ruffle hem and self-tie belt at waist. Back zip. Lined. Body: rayon/polyester. Lining: 100% polyester. Center back length: 29½" on M; 30" on 1X.

XS(0-2) 886-480 XL(16) 887-449  
S(4-6) 886-533 1X(18W-20W) 887-597  
M(8-10) 886-897 2X(22W-24W) 887-601  
L(12-14) 886-901 3X(26W-28W) 887-654  
reg. \$44.99

**\$34.99**

**E. ❖ Market Tote**

Natural oversized canvas tote with contrasting peach straps and trim. Features front pocket. 100% cotton. 23½" L x 8" W x 14" H. Handle drop: 10½" L. Imported. 676-161  
reg. \$28.99

**\$21.99**



Liberty  
Collection  
sold on  
page 159.





## ALL NEW

### Fierce Glam Drop Earrings

Leopard print set in goldtone with textured accents. 1½" L. Pierced.

604-627

reg. \$12.99

**\$9.99**



### Fierce Twist

#### Hoop Earrings

Animal print plus goldtone braided chain. 1½" L. Pierced. 604-464

reg. \$16.99

**\$12.99**



headband &  
scrunchie set



### Roar in Style Headband and Scrunchie Set

Matching leopard-print set. Headband: polyester/man-made materials. Scrunchie: 100% polyester. 603-965 reg. \$19.99

**\$14.99 the set**



## NEW

### Serpentine Glow Collection

Textured snakeskin-like pattern set in goldtone.

## spotted...

Leopard prints and snakeskin-like textures unleash a little wild style.

### A Wild Time Mesh Watch

Leopard-print mesh strap, 9" L. Goldtone case with sunburst dial, 36mm diam. Water-resistant to 3 ATM. 601-298

reg. \$39.99

**\$31.99**

### Medallion Necklace

With glass accent stone. 16½" L. with 3½" extender. Pendant, 2" L. Lobster closure. 601-431

reg. \$19.99

**\$14.99**

### Drop Earrings

With CZ stone accents and glass beads. 2" L. Pierced. 603-009

reg. \$16.99

**\$12.99**

### Stretch Ring

¾" W. Stretches to fit most. 603-051

reg. \$12.99

**\$9.99**



# follow your heart

Make your own  
sparkling statement.



## NEW

### Sparkling Heart Initial Necklace

Goldtone chain with pavé  
glass stones. 16½" L  
with 3½" extender.  
Pendant, approx. ¾" L.  
Lobster closure.  
reg. \$12.99

**\$9.99 each**



## NEW

**Circle of Elegance  
Collection**  
Goldtone with filigree  
detail and hematite-  
colored glass stone  
accents.

**Necklace**  
32" L with 3½"  
extender. Pendant,  
1" L. Lobster  
closure. **605-016**  
reg. \$16.99  
**\$12.99**

**Earrings**  
2" L. Pierced. **606-319**  
reg. \$12.99  
**\$9.99**



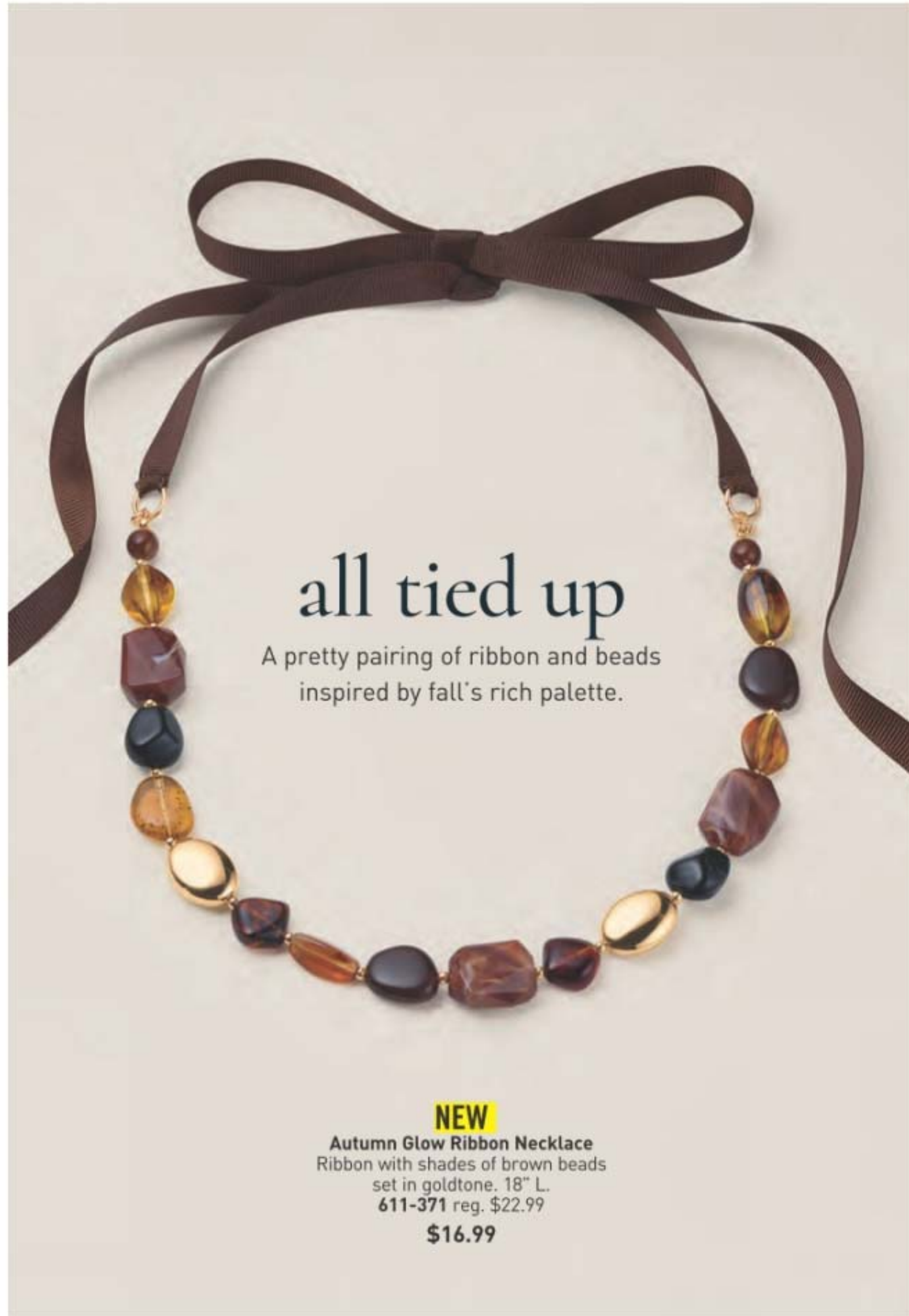
## NEW

**Violet Ivy  
Ombré  
Collection**  
Marquise-cut  
glass stones  
in shades of  
violet set in  
goldtone.

**Necklace**  
18½" L with  
3½" extender.  
**611-333**  
reg. \$22.99  
**\$16.99**

**Earrings**  
Approx. 2" L.  
Pierced.  
**611-367**  
reg. \$19.99  
**\$14.99**





## all tied up

A pretty pairing of ribbon and beads inspired by fall's rich palette.

**NEW**

**Autumn Glow Ribbon Necklace**  
Ribbon with shades of brown beads set in goldtone. 18" L.  
611-371 reg. \$22.99  
**\$16.99**

## signs of the season

Clusters of colors and sweet symbols that capture the essence of fall.



necklace and earring sets

**Pumpkin Patch Necklace and Earring Set**  
Pumpkin and amber-hued glass beads with goldtone accents. 16½" L with 3½" extender. Pendant, 1" L. Lobster closure. Pierced drops, ½" L.  
**477-726**  
reg. \$16.99

**\$12.99 the set**

**Falling Leaves Necklace and Earring Set**  
Clusters of red and green glass beads set in goldtone. 30" L with 3½" extender. Pendant, 1" L. Lobster closure. Pierced drops, 3" L.  
**477-817**  
reg. \$22.99

**\$16.99 the set**





## meaningful moments

Capture special memories with a semi-precious gemstone that speaks to you.

148 | C18

**TIGER'S EYE**  
symbolizes empowerment  
and inner strength.

**SODALITE**  
is associated with clarity,  
truth and self-expression.

**AMETHYST**  
represents emotional  
balance, understanding and  
patience.

**Semi-Precious Keepsake Locket**  
Semi-precious stone. Goldtone chain, 16½" L  
with 3½" extender. Pendant fits approx.  
¾" L x ½" W photo. Lobster closure.  
Amethyst/Goldtone **477-119**  
Tiger's Eye/Goldtone **476-658**  
Sodalite/Silvertone **477-070**  
reg. \$22.99  
**\$16.99 each**

### Warm Autumn Collection

Warm-toned and goldtone beads with a white leatherlike braided cord.

#### Beaded Necklace

20½" L with  
3½" extender.  
Lobster closure.  
**474-602**  
reg. \$22.99

**\$16.99**

#### Beaded Bracelet

Stretches to  
fit most.  
**475-097**  
reg. \$16.99

**\$12.99**

#### Statement Earrings

With burgundy  
bead accent.  
Approx. 1¼" L.  
Pierced.  
**475-120**  
reg. \$16.99

**\$12.99**



## timeless allure

Ornate filigree and  
burnished textural touches exude  
vintage-like glamour.

#### Gilded Filigree Necklace and Earring Set

Burnished filigree  
detail with golden and  
chocolate-colored stones.  
Goldtone chain, 16½" L  
with 3½" extender.  
Pendant drop, approx.  
1" L. Pierced drops,  
approx. 1" L.  
**475-173**  
reg. \$24.99

**\$19.99 the set**



**Contour Links Collection**  
Silvertone links with chain detailing.

**Necklace**  
28" L with 3½" extender. Lobster closure.  
**477-453**  
reg. \$19.99  
**\$14.99**

**Earring Set**  
Set of four hoops. Ranges from approx. ½"–¾" L. Pierced.  
**477-487**  
reg. \$16.99  
**\$12.99 the set**

**Bracelet**  
7½" L with 1" extender. Lobster closure.  
**477-468**  
reg. \$12.99  
**\$9.99**

set of 4 hoops

necklace and earring set

**Celestial Spark Necklace and Earring Set**  
Garnet-like glass baguette stones with sparkling accents set in silvertone. 16½" L with 3½" extender. Pendant, 1" L. Lobster closure. Pierced earrings, ½" L.  
**477-472**  
reg. \$19.99  
**\$14.99 the set**

## reach for the starburst

Blazing beauties alight with rich garnet-like shine.

**Boho Wanderer Collection**  
Antiqued silvertone with a mix of textures and patterns.

**Statement Necklace**  
With charms and mini coin accents. 28½" L with 3½" extender. Lobster closure.  
**477-176**  
reg. \$22.99  
**\$16.99**

## boho beauty

Antiqued...meets contemporary chic!

**Hoop Earrings**  
Approx. 1¼" L. Pierced.  
**477-290**  
reg. \$12.99  
**\$9.99**

**Drop Earrings**  
With dangling accents. Approx. 1¼" L. Pierced.  
**477-324**  
reg. \$12.99  
**\$9.99**

**Coil Bracelet**  
With coin charms. One size fits most.  
**477-233**  
reg. \$16.99  
**\$12.99**



## golden glamour

Make an impact in bold pieces with textured touches.

### Bold Chain Luxe Necklace

Goldtone intertwined links. 16½" L with 3½" extender. Lobster closure. **286-697** reg. \$24.99

**\$19.99**

### Goldtone Signet Ring Set

Set of two goldtone signet and twisted rope rings.

6 **286-845**  
8 **286-850**  
10 **287-306**  
reg. \$12.99

**\$9.99 the set**

### Rippled Flow Hoop Earrings

Goldtone ridged texture. Approx. 1½" L. Pierced.

**286-811**  
reg. \$12.99

**\$9.99**

set of 2

### Rippled Heart Statement Earrings

Goldtone ribbed texture. Approx. 1¼" L. Pierced.

**286-807**  
reg. \$12.99

**\$10.99**

### Eternal Loop Statement Earrings

Goldtone solid and textured finishes. Approx. 1" L. Pierced.

**286-769**  
reg. \$12.99

**\$9.99**

## green & serene

A soothing, grounding hue, anchored by genuine jade.

### Verdant Luxe Beaded Collection

Shades of green glass beads and stones set in goldtone.

### Ring

¾" W.  
6 **477-597**  
8 **477-688**  
10 **477-711**  
reg. \$12.99

**\$9.99**

### Drop Earrings

With CZ accents. 2" L. Pierced.

**477-530**  
reg. \$9.99

**\$7.99**

### Bracelet

7½" L. Spring-ring closure.

**477-506**  
reg. \$12.99

**\$9.99**

### Layered Necklace

With semi-precious jade pendant, 10 x 14mm. 16½" L with 3½" extender; longest layer, 18" L. Pendant drop, 1½" L. Lobster closure. **477-491**

reg. \$24.99

**\$19.99**

semi-precious  
jade pendant



### Sunset Lagoon 3-Piece Set

Multicolor beads with  
goldtone accents.  
24" L with 3½"  
extender. Lobster  
closure. Pierced  
drops, 2½" L. Bracelet  
stretches to fit most.  
286-682  
reg. \$24.99

**\$19.99 the set**

## retro vibes

A cool, colorful  
and playful  
palette  
with fun flair.

necklace,  
earring and  
bracelet set



Owl/Purple  
292-010



Elephant/Blue  
291-745



Fox/Green  
291-750

3 removable pendants:  
wear together or  
separately



**Wild Wisdom Collection**  
Goldtone pendants or charms  
with glass stone accents.

**Pendant Necklace**  
Three removable pendants. 16½" L  
with 3½" extender. 291-415  
reg. \$22.99  
**\$16.99**

**Bracelet Set**  
Set of three. With colored faceted glass,  
pearly and wood beads, plus tassel.  
Stretches to fit most. reg. \$19.99  
**\$14.99 each set**



**Luminous Tides Link Collection**  
Goldtone links adorned with the look of abalone.

**Necklace**  
20½" L with 3½" extender. 291-248  
reg. \$22.99  
**\$16.99**

**Bracelet**  
7¼" L with 1" extender. 291-310  
reg. \$12.99  
**\$9.99**

**Earrings**  
Approx. 1½" L. Pierced. 291-362  
reg. \$12.99  
**\$9.99**



## STERLING SILVER

### Midnight Halo Watch

Black leatherlike strap, 9" L. Silvertone case with the look of abalone dial, 32mm diam. Water-resistant to 3 ATM.

287-507

reg. \$39.99

**\$29.99**

### Sterling Silver Marcasite and Abalone Collection

Genuine abalone inlay with genuine marcasite pavé accents set in .925 sterling silver.

### Ring

¾" W.

5 289-916

6 290-146

7 290-241

8 290-256

9 290-328

10 290-438

reg. \$58.99

**\$49.99**

### Necklace

17" L with

1" extender.

Pendant, 1½" L.

287-511

reg. \$58.99

**\$49.99**

### Earrings

½" L. Fish hook

drops. Pierced.

289-897

reg. \$58.99

**\$49.99**



genuine  
abalone and  
marcasite  
accents

# luxé and luminous

An interplay of shimmering shades evokes the mysteries of the ocean.

## STAINLESS STEEL

### Men's Stainless Steel Trailblazer Collection

Stainless steel with gold ion-plating. Ion plating is a process that enhances the durability and brightness of the gold finish, providing long-lasting wear and a brilliant shine.

### Compass Necklace

22" L. Pendant, 1½" L. Lobster closure. 291-180

reg. \$24.99

**\$19.99**

### Dog Tag Necklace

With black textured design and CZ accent. 24" L. Pendant, 2" L. Lobster closure. 290-442

reg. \$32.99

**\$24.99**

### Ring

With golden rope texture design.

9 290-533 12 290-753

10 290-590 13 290-897

11 290-715

reg. \$24.99

**\$22.99**



JEWELRY

### Bracelet

With black leatherlike design. 9" L. 290-457

reg. \$32.99

**\$29.99**

# cool contrasts

A striking combination of black leatherlike textures accented with golden shine.





**Sunlight Glow Collection**  
Blush pink and black glass beads with goldtone charm and accents.

**Pendant Necklace**  
16½" L with 3½" extender.  
772-509 reg. \$16.99  
**\$12.99**

**Stretch Bracelet**  
Stretches to fit most.  
772-513 reg. \$12.99  
**\$9.99**



**Moonlight Glow Collection**  
Iridescent and black glass beads with silvertone charm and accents.

**Pendant Necklace**  
16½" L with 3½" extender.  
772-528 reg. \$16.99  
**\$12.99**

**Stretch Bracelet**  
Stretches to fit most.  
772-547 reg. \$12.99  
**\$9.99**



set of 4 pairs

can also be worn as hoops with removable charm

**Mixed Glow Earring Pack**  
4-pair mixed metal set with sparkling accents. Goldtone hoop/drop earrings feature removable star charm with glass CZ stone. All under 1" L. Pierced.  
885-446 reg. \$16.99  
**\$12.99 the set**

**Soft Sands Beaded Collection**  
Semi-precious quartz stones, neutral-toned beads and goldtone accents.

**Necklace**  
28" L with 3½" extender.  
885-518 reg. \$24.99  
**\$19.99**

**Bracelet**  
Stretches to fit most.  
885-719 reg. \$12.99  
**\$9.99**



**Liberty Collection**  
Red, white and blue glass beads with goldtone accents.

**Layered Necklace**  
Three-layer necklace with Murano glass accent beads and goldtone pendant.  
16½" L with 3½" extender.  
888-665 reg. \$24.99  
**\$19.99**

**Linear Earrings**  
With Murano glass accent beads.  
Approx. 2½" L. Pierced.  
888-684 reg. \$12.99  
**\$9.99**

**Statement Bracelet**  
Seven-layer bracelet. 8½" L. Lobster closure.  
888-670 reg. \$19.99  
**\$14.99**

**Stripe Nylon Watch**  
Nylon strap, 9" L with 34mm diam. goldtone case. Water-resistant to 3 ATM.  
888-650 reg. \$39.99  
**\$29.99**





**American Heartland Collection**

Red and blue accent stones set in antiqued silvertone with hammered texture.

**Hoop Earrings**  
1½" L. Pierced.  
883-625  
reg. \$12.99  
**\$9.99**

**Drop Earrings**  
2" L. Pierced.  
883-630  
reg. \$12.99  
**\$9.99**

**Ancient Allure Metal Collection**

Antiqued silvertone with hammered texture.

**Hoop Earrings**  
1½" L. Pierced.  
883-610  
reg. \$9.99  
**\$7.99**

**Medallion Necklace**  
26" L with 3½" extender. Pendant, 1½" L. Lobster closure. 883-587  
reg. \$22.99  
**\$16.99**

**Forever in Bloom Crystal Collection**

Crystal glass stones set in silvertone.

**3-Piece Set**  
Necklace, 16½" L with 3½" extender. Pendant, approx. 2" L. Pierced earrings, 1¼" L. Ring sizes: 6 887-999 8 888-005 10 888-043 reg. \$24.99  
**\$19.99 the set**

**Bracelet**  
7¼" L with 1" extender. Lobster closure. 888-058  
reg. \$9.99  
**\$7.99**

necklace, earring and ring set

**STAINLESS STEEL****blue blaze**

A striking, shimmering aqua stone takes center stage.

**Forever Daisy Stainless Steel Aqua CZ Collection**

Aqua-colored CZ center stone with clear stone accents set in stainless steel.

**Bracelet**

One size fits most. .75-carat total weight equivalent. 888-646  
reg. \$49.99

**\$39.99**

**Necklace**

17" L with 1" extender. .75-carat total weight equivalent. 888-517  
reg. \$46.99

**\$36.99**

**Ring**

½" W. .5-carat total weight equivalent.

Sizes:  
5 888-536 7 888-593 9 888-627  
6 888-589 8 888-608 10 888-631  
reg. \$46.99

**\$36.99**

**Earrings**  
1" L. 1-carat total weight equivalent. Pierced. 888-521  
reg. \$49.99  
**\$39.99**



# earthy elegance

Layer up on luxe strands of gem-like shades.

**NEW**

**Vine & Olive Collection**  
Goldtone with shades of purple, grey and olive-green beads.

**Layered Necklace**  
Shortest layer: 16 1/2" L with 3/4" extender; longest layer, 20" L. Lobster closure.  
611-386  
reg. \$24.99  
**\$19.99**

**Drop Earrings**  
With CZ stone accent. Approx. 1 1/2" L. Fish hook. Pierced.  
611-424  
reg. \$12.99  
**\$9.99**

**Layered Bracelet**  
7 1/4" L. Lobster closure.  
611-390  
reg. \$16.99  
**\$12.99**

**NEW**

**Whispering Sky Collection**  
Soft shades of blue enamel with a swirl technique set in goldtone.

**Necklace**  
38" L with 3/4" extender. Lobster closure.  
611-439  
reg. \$24.99  
**\$19.99**

**Clip-On Earrings**  
With white cat-eye glass stone. Approx. 1" L. Clip on.  
611-443  
reg. \$16.99  
**\$12.99**

**Bracelet**  
7 1/4" L. Lobster closure.  
611-458  
reg. \$16.99  
**\$12.99**

**Statement Ring**  
With white cat-eye glass stone.  
6 611-477  
8 611-481  
10 611-515  
reg. \$12.99  
**\$9.99**

# whimsical wonders

Swirls of light blue hues lend a romantic flourish.

clip-on earrings



❖ BEAUTY GRAB BAG

# 4-PIECE SET

## ONLY \$39.99

WITH ANY \$10 BROCHURE PURCHASE

❖ Beauty Grab Bag Set Includes:

• **On-The-Run Crossbody Bag**

Black crossbody bag features zip pockets on front, adjustable strap with metal buckle and ring to attach key fob. Includes inside slotted pockets. Body: 100% nylon. Lining: 100% polyester. Trim: man-made materials. 9½" L x 3¼" W x 15½" H. Strap: 34½" L (fully extended). Imported. **\$39.99 value** (Not sold separately.)

• **Isa Knox Anew Clinical Revitalize & Reveal Advanced Wrinkle Corrector**

1.7 fl. oz.

**\$40 value**

• **Isa Knox Anew Clinical Collagen Booster Eye Lift Pro Dual Eye System**

Gel, .33 fl. oz.

Cream, .33 fl. oz.

**\$40 value**

• **Avon Classics Dreamlife Cologne**

Soft floral. Mimosa flower, rose and amber. 1.7 fl. oz.

**\$20 value**

215-690

**\$139.99 if purchased separately.**

Beauty Grab Bag 4-Piece Set purchase does not qualify towards this or any other offer and is available this Brochure only.



**CAMPAIGN 18, 2025**

THE AVON COMPANY  
165 BROADWAY, NY, NY 10006

**avon.com**



See our commitment at  
[www.avon.com/animal-welfare](http://www.avon.com/animal-welfare)

**RETURN POLICY** If you are not satisfied, return any item within 45 days. View Avon's full 45-Day Return Policy at [avon.com/shipping-returns](http://avon.com/shipping-returns).



© 2025 The Avon Company. All rights reserved.