

AVON

CAMPAIGN 21



LET THE HOLIDAYS IN!
special offer inside

get carried away

THIS HOLIDAY

It's the most wonderful time of the year! The holidays are in the bag with special limited-edition gifts that are all ready to give!



NEW! LIMITED EDITION

ONLY \$14.99

Ready to Go Mini Crossbody Bag
with any \$20 holiday beauty purchase, pages 4-19.

◆ **Ready to Go Mini Crossbody Bag**
Taupe crossbody bag with zipper closure, one inner pocket with three credit card slots and one outer slip pocket. Goldtone hardware. Adjustable and removable strap. Polyurethane with polyester lining. 6³/₄" L x 4" W x 1⁵/₈" D. Handle drop (fully extended): 58" L. Imported. **145-492**
\$40 if purchased separately.

THIS BROCHURE ONLY.
LIMITED QUANTITIES.

*Ready to Go Crossbody Bag purchase does not qualify toward this or any other offer.



NEW! LIMITED EDITION

holiday open house

7 Days of Avon Beauty

Celebrate the season with seven makeup and skin care must-haves! Each door opens to a beautiful surprise! Paperboard, 7 1/8" W x 2" D x 12 7/8" H.

163-069 reg. \$66

\$29.99

7-piece set

Includes:

- Isa Knox LXNEW Ultimate Rejuvenating Serum Mini, .23 fl. oz.
- Isa Knox LXNEW Ultimate Rejuvenating Day Cream Mini, .5 fl. oz.
- fmg LOVE at 1st Lash Mini Mascara in Blackest Black, .13 fl. oz.
- fmg Glimmer Lip Plumper, .3 fl. oz.
- Farm Rx Super Greens Refreshing Gel Cleanser Mini, 1 fl. oz.
- fmg Glimmer Diamonds Eyeliner in Black Ice, .01 oz. net wt.
- fmg Glimmer Lip Glaze in Flash, .3 fl. oz.





mistletoe READY



fmg Glimmer Wish for a Kiss
30 of our best-selling
fmg Glimmer Satin Lipstick
shades in take-to-every-party
sample sizes housed in a cute
keepsake tin. Comes in gift box.
Metal. Each, .021 oz. net wt.

Includes shades:
Luna, Wild Rose, Rose Angel,
Sierra Sunset, Poppy, Violet Night,
Hibiscus, Firebolt, Thunderbird,
Fog, Eclipse, Aster, Wild Cherry,
Tulip, Constellation,
Morning Glory, Plum Blossom,
Desert Moon, Equinox and Twilight.
164-031 reg. \$100
\$29.99
31-piece set

Enjoy special prices and offers with an Avon account or Representative.

NEW! LIMITED EDITION

fmg Eye Moment Palette
Multi-finish eyeshadow
palette to create your
best holiday eyes!
Includes 10 sensational
shades in satin, shimmer,
glitter and matte finishes,
mirror and brush applicator.
Each, .03 oz. net wt.
reg. \$35
\$22 each



Beginning
163-020

New Classic
162-794

NEW! LIMITED EDITION

fmg Glimmer Pout Perfect Mini Lipstick Gift Set

Perfect your pout with a trio of cult-fave fmg Glimmer Satin mini lipsticks. Comes in gift box. Each, .04 oz. net wt.

Includes shades:

- Luna
- Plum Blossom
- **Holiday Set Exclusive!** French Rose

164-490 reg. \$36

\$29.99

3-piece set



fmg Expert Tips Nail Art Tool Kit

Merry your mani and get nails in tip-top shape with this handy kit!

Includes:

- Foam nail buffer block, 7" L.
- Nail buffer, 7" L.
- Two nail files, each, 7" L.
- Cuticle pusher, 5" L, stainless steel.
- Dual-ended marbling and dotting tool, 4" L, metal alloy.
- Cuticle cutter, stainless steel.
- Nail clipper, 2 1/2" L, stainless steel.
- Storage box, 7 1/2" L x 3 1/2" H, plastic.

006-970 reg. \$30

\$16

9-piece set



After you prep, add some nail color, sold on page 84!

nifty + gifty

fmg Mini Makeup Essentials Kit

Your must-have merry makeup essentials all ready to go for every holiday event.

Includes:

- **Holiday Set Exclusive!** fmg Glimmer Duo Eyeshadow Compact, .14 oz. total net wt.
- fmg LOVE at 1st Lash Mini Mascara in Blackest Black, .13 fl. oz.
- fmg Glimmer Mini Satin Lipstick in Wild Rose, .04 oz. net wt.
- Be Blushed Cheek Color in Blushing Nude, .14 oz. net wt.
- Clear Green Pouch Zippered, 4 3/4" L x 4 3/4" H x 4" D. PVC. Imported.

163-460 reg. \$55

\$40

5-piece set



VDL Expert Slim Glow Lip Balm Special Edition Set

Sparkle through the holidays and beyond with supersoft lips and hands! Comes in gift box.

Includes:

- VDL Expert Slim Glow Lip Balm in Pink Sparkle, .08 oz. net wt.
- VDL Lumilayer Perfumed Hand Cream in rose and peony scent, 1.01 oz. net wt.

168-018 reg. \$28.99

\$19.99

2-piece set

Enjoy special prices and offers with an Avon account or Representative.



Men's Fragrance Essentials Gift Set
fresh aromatic
 Elevate your fragrance experience
 with our best-selling classics!
 Comes in gift box.

- Includes:**
- **Wild Country Cologne:**
Lavender, coriander seed
and sandalwood. 3 fl. oz.
 - **Wild Country Aftershave Splash,**
4 fl. oz.
 - **Black Suede Eau de Toilette:**
Bergamot, soft leather and
oakmoss. 3.4 fl. oz.
- 217-195 reg. \$57
\$29.99
3-piece set



magnifi-SCENTS!

NEW! LIMITED EDITION



Haiku Serenity Gift Set
fresh green floral
 Delight in the serenity of a beautiful
 Japanese garden, blooming with
 Japanese yuzu, delicate muguet and
 blonde woods. Comes in gift box.

- Includes:**
- **Haiku Eau de Parfum,** 1.7 fl. oz.
 - **Haiku Hair & Body Mist,** 6.7 fl. oz.
 - **Haiku Intense Travel Spray,** .3 fl. oz.
- 217-161 reg. \$57
\$29.99
3-piece set

Enjoy special prices and offers with an Avon account or Representative.

ho, ho, HYDRATION!



belif in wonder holiday set

Celebrate explosive hydration!
One full-size fave plus two minis.
Limited-edition kit includes:

- The True Cream Moisturizing Bomb, 1.68 fl. oz.
- Aqua Bomb Hydrating Body Moisturizer, 1.01 fl. oz.
- Moisturizing Eye Bomb, .16 fl. oz.

Comes in festive holiday gift box.
208-562 reg. \$42

\$38

3-piece set



belif glow on the go holiday travel kit

Five must-have mini sizes.

Limited-edition kit includes:

- The True Cream Moisturizing Bomb, .33 fl. oz.
- The True Cream Aqua Bomb, .33 fl. oz.
- Moisturizing Eye Bomb, .16 fl. oz.
- Aqua Bomb Hydrating Toner, .67 fl. oz.
- Aqua Bomb Jelly Cleanser, 1.01 fl. oz.

Comes in festive holiday gift box.
210-736 reg. \$30

\$23

5-piece kit

holiday BESTIES

The Face Shop

x earp earp

Herb Day 365

Foaming Cleanser

Trio Trial Kit

Mini daily cleansers infused with naturally derived herbal and fruit extracts. Each, 2 fl. oz. Boxed set includes:

- **Lemon & Grapefruit**
Freshen oily skin.
- **Acerola & Blueberry**
See a clearer complexion.
- **Aloe & Green Tea**
Hydrate dry skin.

904-947 reg. \$11

\$8.40

3-piece kit



The Face Shop

x earp earp

Best Sellers Set

Three skin care beauties, all in one cute kit.

Boxed set includes:

- **The Therapy Vegan Blending Cream**
Lower layer of emulsified cream with an upper layer of oil gel cream. .33 fl. oz.
- **Rice Water Bright Foaming Cleanser**
Gently moisturizing foam with rice extract. 1.01 fl. oz.
- **Real Nature Rice Face Mask**
Brightening and softening sheet mask with rice extract. 7 oz. net wt.

918-060 reg. \$10

\$8

3-piece kit



NEW! LIMITED EDITION



The Face Shop x earp earp

Real Nature Mask Sheet Set

With naturally derived ingredients.

10 single-use sheet masks.

Each, .7 oz. net wt. Boxed set includes:

- **Honey mask** Hydrates for an extra glow.
- **Aloe and Potato masks**
Hydrate and soothe.
- **Lemon and Rice masks** Brighten.
- **Avocado and Green Tea masks** Hydrate.
- **Red Ginseng, Blueberry and Pomegranate masks** Help firm.

900-717 reg. \$11

\$8.80

10 masks

NEW! LIMITED EDITION



Isa Knox LXNEW Ultimate Day and Night Gift Set
With peony extract, plus niacinamide and panthenol. See younger skin blossom. Includes full-size day and night cream. Comes in gift box.

Includes:
• **Rejuvenating Day Cream**, 1.7 fl. oz.
• **Rejuvenating Dual Night Cream** Volume Cream/Firming Cream. Each, .85 fl. oz.
213-716
reg. \$100
\$39.99
2-piece set

GIVE beautifully

Farm Rx Skin De-Stressing Gift Set
Visibly improve wrinkles. Plus, massage with the relaxing wand to help ease facial tension. Comes in gift box.

Includes:
• **Farm Rx Bakuchiol Serum**, 1 fl. oz.
• **Farm Rx Bakuchiol Cream**, 3.04 fl. oz.
• **Holiday Set Exclusive! Acupressure Wand**
Lightly massage T-shaped end of wand upward to enhance absorption of serum and cream.

213-807
reg. \$106
\$35
3-piece set



winter DELIGHTS

Avon Senses Strawberry White Hot Chocolate Winter Bath Collection

An indulgent treat for your winter body care routine. Soften your skin all over while you enjoy the fresh and fruity scent of luscious strawberries with the silky sweetness of decadent white chocolate.



Body Lotion
Smooths and softens with moisture-rich shea butter and vitamin E. 8 fl. oz.
150-320 reg. \$17
\$10.99

Bubble Bath
Sweet and refreshing, delicious bubbles. 16.2 fl. oz.
150-373 reg. \$11
\$7.99

♦ **Candle**
1 wick. Soy-wax blend. 3" diam. 3 1/2" H. Burn time, 40 hours. 7 oz. net wt.
150-392 reg. \$18
\$12.99

Hair & Body Mist
With aloe vera extract, leaves hair and skin feeling refreshed. 8 fl. oz.
150-369 reg. \$18
\$10.99

YOUR GIFT is served



**Daily Moments
Vegan Hand Cream
Holiday Set**
Includes three
of your favorites.
• **Midnight Street**
A sensual fragrance infused
with luscious fruit notes.
• **Sunset Rooftop**
A cool fragrance infused
with a touch of sweetness.
• **Morning Florist**
A floral fragrance featuring
fresh rose blooms.
Each, 1.0 fl. oz.
Comes in gift box.
217-817 reg. \$9.99
\$6.99
3-piece set



**Mini-Size
Holiday Hand Cream**
Can't decide? Get them both!
Each, 1.7 fl. oz. reg. \$3
\$2.49

**Skin So Soft
Pear and Freesia**
217-200

**Moisture Therapy
Soothing and Hydrating**
Fragrance-free.
217-750



Bath Bomb Ornament
Hang 'em on your
Christmas tree. Then
run 'em under water in
your tub and unwind
with warm winter scents!
Suitable for sensitive skin.
Each, 1.6 fl. oz. reg. \$10
\$8 each

Star
(Coconut Milk)
150-426

Christmas Tree
(Brown Sugar)
150-411

great
stocking
stuffers!

BLING on the joy



NEW! LIMITED EDITION

Festive Ornament Collection

Ornaments: green and red enamel with green and red stone accents; plus ivory faux pearls, goldtone bells and red beads.



Necklace
16½" L with 3½" extender. Charms, ¾"-1" L. 221-400
reg. \$24.99
\$19.99

Drop Earrings
2¼" L. Pierced. 221-510
reg. \$16.99
\$12.99

Stretch Bracelet
One size fits most. Charms, approx. ¾" L. 221-620
reg. \$19.99
\$14.99

Pin
Green and red enamel with green, red and clear stone accents. 2" L. 221-668
reg. \$19.99
\$14.99



NEW! LIMITED EDITION

Santa's Workshop Charm Collection

12 days of Christmas motif
charms with glass faceted
beads set in silvertone.

Necklace and Earrings Set

Necklace, 17" L with 3 1/2" extender.
Lobster closure. Charms, 3/4" L.
Pierced drops, 3/4" L.
224-011 reg. \$24.99
\$19.99 the set

Bracelet

7 1/4" L with 1" extender.
Lobster closure.
Charms, 3/4" L.
224-140
reg. \$19.99
\$14.99

necklace and
earrings set

Happy Holidays Collection

With colored enamel
and clear pavé or colored
stone accents.

Stretch Bracelet

With the look of Murano
glass beads and
metal-tone rondelles.
One size fits most.
Charm, approx. 3/4" L.
Wreath (Green Beads)/
Goldtone 221-122
Reindeer (Ivory Beads)/
Goldtone 221-141
Angel (Red Beads)/
Silvertone 221-380
reg. \$16.99
\$12.99 each

Drop Earrings

1" L. Pierced.
Reindeer (Red)/Goldtone 219-915
Wreath (Green)/Goldtone 219-858
Angel (Green/Red)/Silvertone 219-972
reg. \$12.99
\$9.99 each pair



trinkets to **TREASURE**



necklace and earrings sets



Sentimental Necklace and Earrings Set

Necklace, 16½" L with 3½" extender. Pendant, ranges from approx. ½"-1" L. Pierced studs, range from approx. ¼"-½" L.
Moon (Silver-tone)/Blue Stones **222-960**
Heart (Silver-tone)/Crystal Stones **223-842**
Circle (Gold-tone)/Crystal Stones **224-007**
reg. \$16.99
\$12.99 each set

season of SENTIMENTS



January
217-874



February
217-912



March
217-927



April
218-153



May
218-172



June
218-206



July
218-244



August
218-388



September
218-540



October
218-976



November
219-289



December
219-532

**NEW!
LIMITED
EDITION**

Birthstone Cross Necklace

Colored glass stones set in silver-tone. 16½" L with 3½" extender. Lobster closure. Cross, 1" L.
reg. \$12.99
\$9.99 each

**NEW!
LIMITED
EDITION**

Let It Snow Collection
Snowflake motif
with sparkling
silvery and light blue
stone accents set in
silvertone.

Pendant Necklace
16½" L with 3½"
extender. Pendant,
approx. 1" L.
222-023
reg. \$16.99
\$12.99

Drop Earrings
Approx. 1" L. Pierced.
222-425
reg. \$12.99
\$9.99

Stretch Bracelet
One size fits most.
222-573
reg. \$16.99
\$12.99

winter WONDERS

Pearly Vine Collection
The look of pearls
with crystal stones set
in silvertone.

Y Necklace
16½" L with 3½"
extender. Lobster
closure. Drop, 1" L.
221-782
reg. \$19.99
\$14.99

Drop Earrings
¾" L. Pierced.
221-820
reg. \$12.99
\$9.99

Bracelet
Adjustable; one size
fits most. **222-019**
reg. \$12.99
\$9.99

**NEW!
LIMITED
EDITION**

**Holiday Rhinestone
Layered Stretch Ring**
With clear stone accents.
One size fits most.
Purple/Silvertone 224-944
Red/Goldtone 224-671
Blue/Silvertone 224-925
reg. \$12.99
\$9.99 each

RING IN the season

Bold Baguettes Collection
Emerald-, sapphire- and amethyst-
color stones set in silvertone.

Hoop Earrings
(Shown on model.) Approx.
1" L. Pierced. 224-246
reg. \$16.99
\$12.99

Necklace and Earrings Set
Necklace, 16 1/2" L with 3 1/2"
extender. Pierced drops (shown
below), approx. 1/2" L. 224-231
reg. \$34.99
\$26.99 the set



a glimmer of
GLAMOUR

Stretch Bracelet
One size fits most.
224-270 reg. \$22.99
\$16.99



Sparkly Filigree Collection
SILVERTONE with
filigree accents.

**Long Layered
Necklace**
With glass silvertone
beads. 30" L with
3 1/2" extender.
224-959
reg. \$24.99
\$19.99

Chandelier Earrings
Approx. 2" L.
Pierced. 225-879
reg. \$12.99
\$9.99

Stretch Bracelet
One size fits most.
Charms, approx.
3/4" L. 226-363
reg. \$16.99
\$12.99

twinkle
TWINKLE



Earrings
Studs, 1/2" L.
Pierced.
226-818
reg. \$12.99
\$9.99

Necklace
16 1/2" L with 3 1/2"
extender. Lobster
closure. 226-545
reg. \$16.99
\$12.99

Stretch Ring
One size fits most.
Approx. 3/4" L.
227-030
reg. \$16.99
\$12.99

**Flexible Cuff
Bracelet**
One size fits most.
226-856
reg. \$13.99
\$10.99

NEW! LIMITED EDITION

Sunburst Collection
Pavé crystal glass stones
set in goldtone.

Enjoy special prices and offers with an Avon account or Representative.

STERLING SILVER

NEW! LIMITED EDITION

Sterling Silver Collection
Clear pavé CZs set in sterling silver.

Bow Necklace
17" L with 1" extender.
Pendant, 3/4" L. **231-077**
reg. \$64.99
\$49.99

Dove Necklace
17" L with 1" extender.
Pendant, 3/4" L. **227-230**
reg. \$64.99
\$49.99

holiday FINERY

STERLING SILVER

**Sterling Silver
Blue Spinel Heart
Collection**
Clear CZs and blue
spinel stones set in
sterling silver.

Necklace
17" L with 1" extender.
Pendant, 3/4" L. **227-059**
reg. \$72.99
\$56.99

Earrings
Studs, 1/2" L. Pierced.
227-226
reg. \$64.99
\$49.99

Sterling Silver Genuine Aventurine Collection

Genuine green
aventurine stone
set in sterling silver.

Pendant Necklace
17" L with 1" extender.
Pendant, approx.
1/2" L. **854-510**
reg. \$69.99
\$54.99

Earrings
1/2" L drops.
Pierced.
854-524
reg. \$64.99
\$49.99

Ring
Approx. 1/2" W.
Sizes:
5 **854-539** 8 **870-246**
6 **857-580** 9 **870-356**
7 **857-595** 10 **870-375**
reg. \$69.99
\$54.99

**Sterling Silver
Genuine Onyx
Halo Collection**
Genuine onyx stone
with CZ accents set
in sterling silver.

Necklace
17" L with 1"
extender. Pendant,
1/2" L; 1.25-carat
equivalent. **502-937**
reg. \$69.99
\$54.99

Ring
1.75-carat equivalent.
Sizes:
5 **503-402** 8 **503-436**
6 **503-417** 9 **503-440**
7 **503-421** 10 **503-770**
reg. \$69.99
\$54.99

Earrings
1/4" L studs;
.75-total carat weight
equivalent. Pierced.
503-398 reg. \$67.99
\$52.99

PLAID tidings!

◆ **Plaid Button-Detail Slipper**
Plaid upper with matching button detail, black faux-fur lining and trim. Man-made materials. Imported.
reg. \$23.99
\$17.99 each pair

White/Black
S(5-6) 169-473
M(7-8) 169-860
L(9-10) 169-894
XL(11-12) 170-291

Green/Black
S(5-6) 168-022
M(7-8) 168-037
L(9-10) 168-151
XL(11-12) 168-166

Red/Black
S(5-6) 168-170
M(7-8) 168-792
L(9-10) 169-200
XL(11-12) 169-435

Enjoy special prices and offers with an Avon account or Representative.

NEW!
LIMITED
EDITION



3-piece
set
includes
headband

Models are wearing
2-Pack Christmas Socks and
Scrunchie sold on page 37.
Size chart on page 118.

◆ Snowflake Sleepshirt

Snowflake-print green henley-style long-sleeve sleepshirt with front placket and buttons. Polyester/spandex. Center back length: 32" on M; 34" on 1X. Machine wash, line dry. Imported.

XS(0-2) 204-772	XL(16) 205-908
S(4-6) 205-180	1X(18W-20W) 205-912
M(8-10) 205-817	2X(22W-24W) 205-927
L(12-14) 205-893	3X(26W-28W) 207-619
reg. \$42.99	
\$32.99	

◆ Candy Cane-Striped Pajama Set

Red-and-white-striped long-sleeve round-neck top. Matching pull-on bottom with elastic waistband and side pockets. Includes matching headband. Top and bottom: cotton. Neckline trim: cotton/spandex. Center back length for top: 25½" on M; 27" on 1X. Bottom inseam: 30" for all sizes. Machine wash and dry. Imported.

XS(0-2) 202-909	L(12-14) 203-336	2X(22W-24W) 203-393
S(4-6) 203-135	XL(16) 203-340	3X(26W-28W) 204-768
M(8-10) 203-321	1X(18W-20W) 203-355	
reg. \$56.99		
\$44.99 the set		

NEW! LIMITED EDITION

O, cozy night

◆ Whimsical Holiday Slipper

Red faux-sherpa upper with green embroidered Christmas tree and candy cane-striped insole. Man-made materials. Imported.

S(5-6) 171-738
M(7-8) 171-962
L(9-10) 171-977
XL(11-12) 171-981
reg. \$20.99
\$15.99



two pairs of socks
+ hair scrunchie

◆ 2-Pack Christmas Socks with Scrunchie

Red and green Santa and black and red reindeer socks. Comes with red scrunchie with jingle bells. Fits shoe sizes 6-10. Socks: polyester/spandex; scrunchie: 100% polyester. Machine wash and dry (socks only). Imported.

194-177
reg. \$12.99
\$9.99 the set

Enjoy special prices and offers with
an Avon account or Representative.

season of LIGHTS

◆ **Bright Moments Hurricane Glass Set Light-Up**
Vintage Christmas scene all aglow! Houses and snowflakes light up. Takes three AA batteries each (not included). On/off switch. Each, 3½" diam. Small: 4" H; large 8" H. Glass. Imported. 234-611
reg. \$32.99
\$24.99 set of 2 💡

◆ **Bright Moments Glass Tree Light-Up**
Santa is on the scene! Lights up and plays eight holiday tunes. Takes three AA batteries (not included). Switch for lights only, lights and sound or off. Glass, plastic, resin. 4" diam. x 10½" H. Imported. 235-584
reg. \$39.99
\$29.99 💡🎵



PLAYS EIGHT HOLIDAY TUNES:
Jingle Bells
We Wish You a Merry Christmas
Silent Night
Deck the Halls
Joy to the World
The First Noel
Hark! The Herald Angels Sing
O, Christmas Tree

NEW! LIMITED EDITION

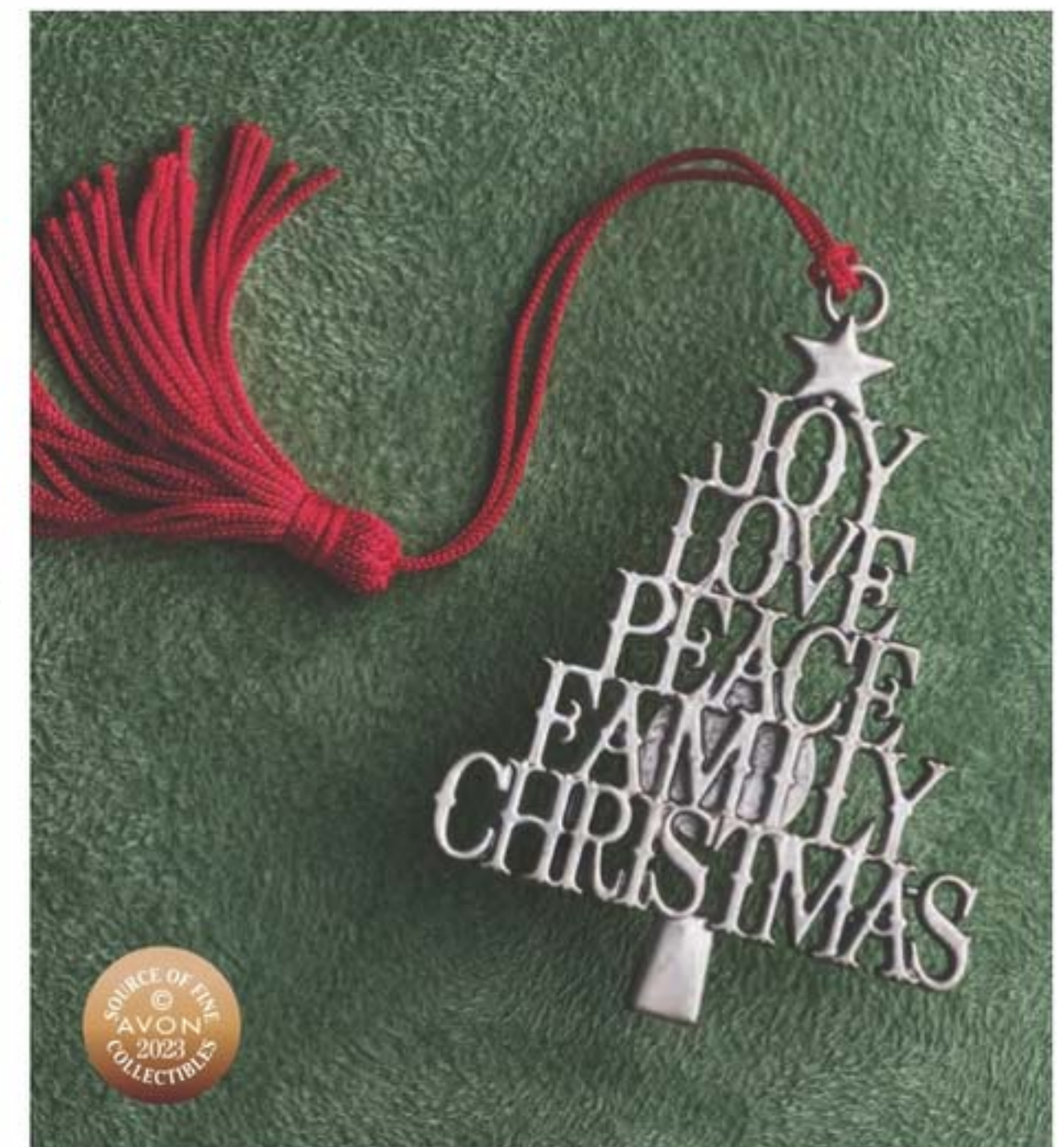


◆ **Bright Moments Bottle Brush Tree Set Light-Up**
Quintessential bottle brush Christmas trees with holiday lights. Takes three AA batteries each (not included). On/off switch. Each, 3" diam. Small: 6" H; medium: 7¾" H; large: 10¼" H. Plastic, metal. Imported. 238-291
reg. \$39.99
\$29.99 set of 3 💡

◆ **Bright Moments Inspirational Pewter Ornament**
Continue the tradition! Trim your tree with our annual collectible ornament, exclaiming Love, Joy, Peace, Family and Christmas. Embossed with the 2023 Avon Fine Collectibles stamp on back. Includes velvet keepsake pouch and easy-to-hang tassel. 2½" W x 2¾" L. Pewter, polyester. Imported. 234-573
reg. \$20.99
\$15.99

Don't forget the batteries! AA and AAA sizes available on Avon.com. For decorative use only. Keep out of reach of children.

Enjoy special prices and offers with an Avon account or Representative.



NEW

Anew Platinum Sculpting Body Serum
With niacinamide, panthenol (pro-vitamin B5) and powerful peptides, effective anti-aging ingredients known to help boost moisture, leaving skin looking firmer, smoother and more youthful. 6.7 fl. oz.
506-249
reg. \$45
\$26.99



Anew Platinum Firm and Sculpt Cream for Neck and Chest
With Peptide Lifting Complex. For skin on your neck and chest, vulnerable to sagging. Use PM after cleansing. 1.7 oz. net wt.
763-584 reg. \$42
\$24.99

Anew Platinum Night Cream
Skin appears smoother overnight, resculpted over time. 1.7 oz. net wt.
753-439 reg. \$42
\$24.99

Anew Platinum Eye & Lip Cream
Visibly smooths and reshapes the area around eyes...and lips, too! Dual applicator. .5 oz. net wt.
328-072 reg. \$42
\$24.99

Anew Platinum Day Cream Broad Spectrum SPF 25
Fight gravity...or sun damage? With this cream, you can do both. 1.7 oz. net wt.
184-146 reg. \$42
\$24.99

Anew Platinum Age Delay Serum
With niacinamide (vitamin B3) and panthenol (pro-vitamin B5), plus peptides that help visibly boost elasticity and lift facial contours for a more youthful look. Use AM and PM before moisturizer. 1 fl. oz.
625-609
reg. \$45
\$26.99



Anew Platinum Regimen Set
Includes three full-size moisturizers plus one try-it-size serum.
• **Day Cream Broad Spectrum SPF 25** 1.7 oz. net wt.
• **Night Cream** 1.7 oz. net wt.
• **Eye & Lip Cream** .5 oz. net wt.
• **Anew Power Serum** .24 fl. oz.

4-PIECE BOXED KIT
732-639 reg. \$128
\$54.99

FREE belif aqua bomb jelly cleanser* and the solution hydrating face mask** with any \$30 skin care purchase, pages 40-66. \$38 value.
*Sold separately on page 66. **Sold separately on page 63.

Why lie about your age? Your skin care can do that for you. Look more youthful day after day.



A. Anew Ultimate Multi-Performance Eye System
Visibly smooths crow's-feet and de-puffs under-eye bags. Cream, .5 oz. net wt. Elixir, .09 oz. net wt. 854-433 reg. \$42 **\$24.99**

B. Anew Ultimate Multi-Performance Day Cream Broad Spectrum SPF 25
You'll see wrinkles fade and youthful vibrance return. 1.7 oz. net wt. 763-307 reg. \$42 **\$24.99**

C. Anew Ultimate Night Repair Serum
With peptides, licorice, hyaluronic acid and niacinamide. Diminishes the appearance of fine lines and visibly improves skin tone and texture. Use PM before moisturizer. 1 fl. oz. 625-355 reg. \$45 **\$26.99**

D. Anew Ultimate Multi-Performance Night Cream
It works while you sleep to revive and recreate the look of youthful skin. 1.7 oz. net wt. 157-162 reg. \$42 **\$24.99**

E. Anew Ultimate Supreme Eye Balm
Infused with squalane, sunflower seed oil and antioxidant vitamin E. Moisturizing formula. Wear alone or under makeup. 0.1 oz. net wt. 625-340 reg. \$45 **\$26.99**



Anew Ultimate Supreme Dual Elixir
Follow with Advanced Performance Crème. Serum/Oil, .67 fl. oz. each. 588-421 reg. \$60

Anew Ultimate Supreme Advanced Performance Crème
With Black Pearl Extract. See a dramatic difference in deep wrinkles and skin radiance. 1.7 oz. net wt. 014-735 reg. \$60

\$38.99 each



Try-It Size!

Ultimate Multi-Performance Night Cream
.5 oz. net wt. 626-222 reg. \$15 **\$8.99**



give your skin care a power boost

See powerful results in:

- hydration
- smooth texture
- radiance
- lines & wrinkles diminished
- firmness

Anew Power Serum

93% of women agree it dramatically improves skin's overall appearance.* Apply AM/PM after cleansing, before moisturizing. 1 fl. oz. 417-187 reg. \$45 **\$26.99**

*Based on those who expressed an opinion in a consumer-perception study.

normal to dry skin

Nourishing Cream Cleanser

With panthenol (vitamin B5), rosemary and soapwort extracts. Removes impurities and makeup while restoring moisture.

5 fl. oz. 717-990

reg. \$12

\$9.99



oily to normal skin

Soothing Whipped Oil Cleanser

Amino acid-based ingredients derived from coconut eliminate impurities and excess oil. With panthenol (vitamin B5) and aloe.

5 fl. oz. 718-025

reg. \$16

\$12.99



normal, dry and combination skin

Balancing Gel Cleanser

Gel to foam. With panthenol (vitamin B5). Amino acid-based ingredients derived from coconut help remove oil and impurities while rebalancing skin. 5 fl. oz. 718-010 reg. \$12

\$9.99



normal, dry, combination and oily skin

2-in-1 Exfoliating Cleansing Balm

Melts away makeup and impurities. With panthenol (vitamin B5) and bamboo stem powder. Spatula included. 3.5 oz. net wt. 718-006 reg. \$30

\$24.99



Cleansing Brush

Includes one brush head. Requires two AA batteries (not included).

679-266

reg. \$47

\$28.99



ISA KNOX LXNEW ULTIMATE rejuvenating collection

NEW

Isa Knox LXNEW Ultimate Rejuvenating Multi-Corrector
Luxurious paeonol-infused serum with niacinamide and panthenol to help visibly address key signs of aging. Skin looks smoother and more youthful. Pat into areas prone to fine lines and wrinkles before moisturizer. 1.7 fl. oz. **496-595** reg. \$50 **\$34.99**



Isa Knox LXNEW Ultimate Rejuvenating Serum
With paeonol and ceramides, visibly improves elasticity, radiance and skin texture, and reduces the appearance of wrinkles. 1.35 fl. oz. **756-624** reg. \$56 **\$44.99**



Isa Knox LXNEW Ultimate Rejuvenating Eye Serum
Infused with paeonol and niacinamide to help visibly reduce fine lines around the eye area and depuff under-eye bags. 1 fl. oz. **567-177** reg. \$50 **\$39.99**



Isa Knox LXNEW Ultimate Rejuvenating Day Cream
With paeonol, visibly reduces wrinkles and improves the look of elasticity, radiance and skin texture. With nutmeg to help visibly even skin tone. 1.7 fl. oz. **351-892** reg. \$50 **\$39.99**



Isa Knox LXNEW Ultimate Rejuvenating Multi-Balm Stick
With peony extract, plus a firming complex featuring castor oil, moringa and argan oil. Apply to forehead, eyes and neck, or anywhere you want extra care. .24 fl. oz. **267-593** reg. \$24 **\$19.99**



Isa Knox LXNEW Ultimate Rejuvenating Tinted Lip Balm
With glossy oil for silky-smooth lips. Wear alone or over lipstick. .12 oz. net wt. Red **010-452** reg. \$25 **\$19.99**



Isa Knox LXNEW Ultimate Rejuvenating Dual Night Cream
With paeonol and macadamia oil. Volume Cream: Rice bran extract helps visibly plump skin. Firming Cream: Helps boost collagen and elastin. Each, .85 fl. oz. **564-015** reg. \$50 **\$39.99**



ISA KNOX LXNEW PLATINUM sculpting collection

Innovative formulas with organic hibiscus extract help skin look lifted from every angle



Isa Knox LXNEW Platinum Sculpting Oil Serum
Hibiscus extract-infused serum, with rejuvenating peptides and antioxidants. Skin looks firmer and more lifted. 1.35 fl. oz. **318-720** reg. \$56 **\$44.99**

Isa Knox LXNEW Platinum Sculpting Day Cream
Infused with moisturizing hibiscus extract and smoothing ceramide. Visibly tightens facial contours. 1.7 fl. oz. **318-845** reg. \$50 **\$39.99**

Isa Knox LXNEW Platinum Sculpting Night Cream
With firming hibiscus extract, ceramide, squalane and shea butter. Skin looks firmer, smoother and more defined. 1.7 fl. oz. **318-850** reg. \$50 **\$39.99**

Isa Knox LXNEW Platinum Sculpting Eye Cream
With hibiscus extract, panthenol and antioxidants. Leaves the delicate eye area looking firmer, brighter, more defined. .84 fl. oz. **318-883** reg. \$50 **\$39.99**

Isa Knox LXNEW Platinum Sculpting Neck and Chest Cream
With hibiscus extract, ceramide, shea butter, panthenol and squalane to help vulnerable skin along the neck and chest appear firmer, smoother and lifted. 1.7 fl. oz. **548-069** reg. \$50 **\$39.99**



SKIN CARE COLLECTIONS save on all your faves

ISA KNOX LXNEW PLATINUM SET

Isa Knox LXNEW Platinum Sculpting Day Cream
1.7 fl. oz.

Isa Knox LXNEW Platinum Sculpting Oil Serum
1.35 fl. oz.

2-PIECE SET
\$39.99
\$106 VALUE
216-681



ISA KNOX LXNEW ULTIMATE SET

Isa Knox LXNEW Ultimate Rejuvenating Day Cream
1.7 fl. oz.

Isa Knox LXNEW Ultimate Rejuvenating Serum
1.35 fl. oz.

2-PIECE SET
\$39.99
\$106 VALUE
216-548



ISA KNOX SET

Isa Knox Anew Clinical Line Eraser with Retinol [1.0%]
Advanced Retinol Serum
1 fl. oz.

Isa Knox LXNEW Clean Balancing Gel Cleanser
5 fl. oz.

Isa Knox Anew Clinical Collagen Booster Microneedling Polisher
1.7 fl. oz.

3-PIECE SET
\$29.99
\$96 VALUE
541-576



RICE WATER BRIGHT SET

Rice Water Bright Rice Bran Gentle Exfoliating Cleanser
10.1 fl. oz.

Rice Water Bright Facial Massage Cream
6.7 fl. oz.

Rice Water Bright Cleansing Facial Wipes
50 sheets.

3-PIECE SET
\$19.99
OVER \$50 VALUE
216-218



THE FACE SHOP SET

the true cream aqua bomb aloe
1.69 fl. oz.

Herb Day 365 Amino Acid Facial Foaming Cleanser—Aloe
5.7 fl. oz.

Rice Water Bright Foaming Cleanser
5 fl. oz.

Jeju Aloe Hand & Body Lotion
13.5 fl. oz.

4-PIECE SET
\$35.99
OVER \$67 VALUE
216-882



FACE & HANDS SET

Try-It-Size belif the true cream aqua bomb
.84 fl. oz.

belif aqua bomb hydrating body moisturizer
10.1 fl. oz.

Herb Day 365 Amino Acid Cleansing Foam—Peony
5.7 fl. oz.

Daily Moment Vegan Hand Cream—Sunrise Bedroom
1.0 fl. oz.

4-PIECE SET
\$45.99
OVER \$75 VALUE
216-351



CLINICAL Line Eraser / Collagen Booster

Isa Knox Anew Clinical Line Eraser with Retinol Targeted Treatment

In just one week, the look of deep lines is smoothed and resurfaced. Use PM. .67 fl. oz. **729-397** reg. \$40 **\$23.99**

Isa Knox Anew Clinical Line Eraser with Retinol Treatment
Great for first-time retinol users. Use AM/PM. 1 oz. net wt. **729-382** reg. \$45 **\$27.99**



Isa Knox Anew Clinical Collagen Booster Eye Lift Pro Dual Eye System

With a peptide complex to help boost skin renewal. In one week, eye area looks lifted, firmer and tighter. Gel, .33 fl. oz. Cream, .33 fl. oz. **729-435** reg. \$40 **\$23.99**



Isa Knox Anew Clinical Line Eraser with Retinol [1.0%] Advanced Retinol Serum

Our highest dose of retinol. Dramatically reduces the appearance of fine lines, wrinkles and dark spots. 1 fl. oz. **390-751** reg. \$50 **\$39.99**



100% showed clinical improvement of fine lines and wrinkles in one week, with increased results over time.

Isa Knox Anew Clinical Collagen Booster Microneedling Polisher

At-home alternative to micro-dermabrasion and micro-needling procedures. Visibly diminishes pores, fine lines and wrinkles. Skin looks smoother and more radiant. 1.7 fl. oz. **798-592** reg. \$34 **\$19.99**



NEW

Isa Knox Anew Clinical Collagen Booster Firming Cream

With peptides that boost skin renewal to help to visibly firm skin and restore youthful bounce. Also infused with moisturizing and skin-plumping niacinamide and squalane. For optimal results, apply following Rejuvenating Serum Ampoules. Hygienic, airless pump. 1.7 fl. oz. **069-327** reg. \$45 **\$27.99**



Isa Knox Anew Clinical Collagen Booster Rejuvenating Serum Ampoules

Powerful peptide blend boosts skin renewal. 60 capsulated single-use ampoules. .008 fl. oz. each. **803-077** reg. \$62.50 **\$49.99**



CLINICAL Revitalize & Reveal

Isa Knox Anew Clinical Revitalize & Reveal Extra Strength Retexturizing Peel

Results similar to a 35% pro glycolic peel.* 30 fragrance-free pads. 2" diam. **729-420** reg. \$40 **\$23.99**

*In 6 out of 8 attributes tested over a 7-week period.



Isa Knox Anew Clinical Revitalize & Reveal Advanced Wrinkle Corrector

In just two weeks, wrinkles appear reduced. 1.7 fl. oz. **729-401** reg. \$40 **\$23.99**



Isa Knox Anew Clinical Revitalize & Reveal Resurfacing Expert Smoothing Fluid

79% as effective as a pro micro-dermabrasion without the same irritation. 1 fl. oz. **852-282** reg. \$44 **\$27.99**



Isa Knox Anew Clinical Revitalize & Reveal Intensive Peel

An intensive resurfacing peel similar to pro acid peels. With AHA and PHA. 1 fl. oz. **780-025** reg. \$45 **\$27.99**



Isa Knox Anew Clinical Revitalize & Reveal Resurfacing Lotion for Body

Exfoliates with gentle yet effective AHA lactic acid. Moisturizes with shea butter. 5 fl. oz. **390-785** reg. \$34 **\$19.99**



Anew Vitamin C Overnight Radiant Mask

Visibly improves texture and boosts radiance. Apply after cleansing, treating and moisturizing.

1.7 fl. oz.
157-086
reg. \$36
\$19.99



Anew Vitamin C Warming Peel

With vitamin C flakes and natural seeds, exfoliates with a warming sensation.

3.4 fl. oz. 936-425
reg. \$27
\$15.99



Anew Vitamin C Brightening Serum

Skin is visibly energized and brightened with the power of 10% pure vitamin C. 1 fl. oz.

522-066
reg. \$44
\$24.99

Anew Vitamin C Nourishing Body Butter

With hydrating shea butter and sodium PCA, enriched with niacinamide, helps restore radiance with vitamins C and E to defend against free radical damage.

Uplifting fruity-floral and citrus scent. 7.8 fl. oz.

443-767 reg. \$32
\$17.99

Anew Vitamin C Glow Body Scrub

Sugar-based formula, with pineapple and papaya enzymes, and coffee seed extract, exfoliates dry, dull skin, while a blend of sunflower seed oil and sweet almond oil replenishes moisture. Refreshing citrus scent.

9 oz. net wt.
443-752 reg. \$36
\$19.99



Anew Vitamin C Illuminating Priming Moisturizer

With natural citrus extracts. Wear alone or under makeup. 1.7 fl. oz. 868-508
reg. \$34
\$18.99

Anew Vitamin C Brightening Eye Cream

Visibly reduces dark circles. Leaves under-eye area looking brighter and more even-toned. .5 fl. oz. 868-512 reg. \$34
\$18.99

Anew Vitamin C Antioxidant Lip Treatment

Nourishes lips with vitamins C and E.

.13 oz. net wt.
784-547
reg. \$14
\$7.99



Anew Vitamin C Illuminating Body Serum

Light-reflecting pigments leave skin looking luminous. 6.7 fl. oz. 157-071

reg. \$34
\$19.99



100% mineral sunscreen with no white cast!

Isa Knox Anew Solaire Everyday Mineral Face Protection Cream Broad Spectrum SPF 50

Lightweight formula with zinc oxide. Suitable for sensitive skin. Water-resistant (40 minutes).

1.7 fl. oz. 437-143
reg. \$29
\$22.99



Isa Knox Anew Solaire Everyday Face Protection Lotion Broad Spectrum SPF 50

Creamy lotion formula. Wear alone or under makeup. 1.7 fl. oz.

911-400
reg. \$29
\$22.99



Isa Knox Anew Solaire Active Face & Body Protection Lotion Broad Spectrum SPF 50

Water-light formula glides on smoothly all over face and body. 2.7 fl. oz. 154-948

reg. \$31
\$24.99



Anew Hydra Fusion Nighttime Facial Treatment
Visibly plumps skin. Increases moisture by 3X. Relaxing rose scent. 1.7 oz. net wt. **139-429** reg. \$34 **\$18.99**

Anew Hydra Fusion De-Puffing Eye Serum
With caffeine and a cooling ceramic tip. Instantly boosts hydration around the eye area by 3X. Eyes look and feel refreshed. .5 fl. oz. **137-737** reg. \$34 **\$18.99**



Anew Hydra Fusion 1.5% Hyaluronic Acid Serum
With three different molecular sizes of HA that reach multiple layers of skin's surface to visibly plump skin. 1 fl. oz. **290-390** reg. \$44 **\$24.99**



Anew Hydra Fusion Cleansing Micellar Water
Gently lifts dirt, oil and makeup while boosting hydration. No need to rinse off. 10.1 fl. oz. **139-380** reg. \$14 **\$8.99**



Anew Hydra Fusion Gel Cream
Skin appears smoother, refreshed and plumped with lasting hydration. 1.7 oz. net wt. **266-893** reg. \$34 **\$18.99**



Skinvincible Deep Recovery Cream
Lessens the look of age damage in weeks. Use PM. 1 oz. net wt. **290-351** reg. \$40 **\$23.99**



Avon Solutions Nurtura Replenishing Cream
Adds moisture to dry skin. 1.7 fl. oz. **908-263** reg. \$10 **\$7.99**



Avon Solutions Anti-Aging Cream
Moisturizing formula works to visibly smooth the appearance of fine lines and wrinkles. 1.7 fl. oz. **906-681** reg. \$13 **\$7.99**



Avon Solutions Dramatic Firming Cream
Skin looks and feels smoother. 1.7 fl. oz. **374-657** reg. \$10 **\$7.99**



Avon Solutions Banishing Cream Skin Discoloration Improver
Visibly improves skin tone. 2.5 fl. oz. **463-374** reg. \$10 **\$7.99**



Avon Care Silicone Glove Protective Hand Cream
Lasting protection from dryness. 3.4 fl. oz. **366-887** reg. \$6 **\$2.69**



NEW

Farm Rx Pineapple Plus Radiance Boosting Mask
With natural alpha hydroxy acid, plus an antioxidant-rich fruit complex to help skin look smoother and more radiant. 3 fl. oz. **456-266** reg. \$37 **\$27.99**

Farm Rx Pineapple Plus Instant Glow Toner
Revitalizing toner helps visibly minimize pores. Use AM and PM, after cleansing. 5 fl. oz. **027-382** reg. \$25 **\$17.99**

Farm Rx Pineapple Plus Brightening Jelly Serum

Helps improve dull, dry skin and reduce the appearance of fine lines, wrinkles and pores. Skin looks radiant. 1 fl. oz. **027-440** reg. \$44 **\$32.99**



NEW

Farm Rx Amazon Berry Boost Moisturizing & Firming Mask
Ultra-moisturizing face mask with acai berry, Brazil nut oil plus murumuru and cupuaçu butters. Helps skin look firmer, smoother and tighter. 3 fl. oz. **413-052** reg. \$37 **\$27.99**

Farm Rx Amazon Berry Boost Smoothing & Firming Body Cream
With moisturizing and nourishing Brazil nut oil plus murumuru and cupuaçu butters. 5 fl. oz. **027-655** reg. \$25 **\$17.99**

Farm Rx Amazon Berry Boost Lifting & Firming Serum
With acai berry, known to help fight visible effects of collagen breakdown so skin looks smoother and firmer. 1 fl. oz. **414-499** reg. \$44 **\$32.99**



Farm Rx Bakuchiol Serum
Concentrated lightweight oil-textured formula penetrates skin's surface to target fine lines, wrinkles and dullness without irritation. 1 fl. oz. **247-417** reg. \$44 **\$32.99**

98% natural



Farm Rx Bakuchiol Eye Cream
Visibly reduces dark circles, fine lines and wrinkles without irritating the delicate eye area. 1 fl. oz. **565-834** reg. \$37 **\$27.99**

90% natural



Farm Rx Bakuchiol Cream
Moisturizing cream with bakuchiol, a plant-based alternative to retinol that you can use during the day. Visibly reduces wrinkles. Vegan. Hypoallergenic. Suitable for sensitive skin. 3.04 fl. oz. **004-044** reg. \$44 **\$32.99**

92% natural



FARM RX formulated with natural ingredients

Farm Rx Super Greens Multivitamin Moisture Cream

Locks in essential nourishing moisture. Use daily after cleansing, serums and treatments. 3.04 fl. oz. 314-141 reg. \$37 \$27.99

Farm Rx Super Greens Cooling Gel

Lightweight moisturizer helps soothe and cool skin. Apply a thicker layer, after serum, as a mask to hydrate overnight as needed. 3.04 fl. oz. 354-227 reg. \$37 \$27.99

Farm Rx Super Greens Nourishing Cleansing Balm

Helps boost moisture barrier as it dissolves makeup and impurities. For normal, dry, combination, oily and sensitive skin types. 3.3 fl. oz. 516-944 reg. \$41 \$30.99

Farm Rx Super Greens Refreshing Gel Cleanser

With soothing aloe. Convenient pump. Eco-friendly packaging and glass bottle. Use AM/PM. 8.11 fl. oz. 913-049 reg. \$25 \$17.99

Farm Rx Super Greens Refreshing Gel Cleanser Refill*

Includes two refills. 16.9 fl. oz. 913-053 reg. \$37 \$27.99

*Not shown.

Farm Rx Super Greens Refreshing Eye Cream

With nourishing Super Greens formula, plus cucumber extract. Hydrates and helps skin feel soothed. Green tea helps visibly de-puff. 1 fl. oz. 412-826 reg. \$31 \$22.99



NEW

Farm Rx Super Greens Trial Kit

Includes two try-it sizes:
• Cooling Gel, 1.7 fl. oz.
• Multivitamin Moisture Cream, 1.7 fl. oz.
496-270 reg. \$25 \$17.99



CBD helps calm skin and visibly reduce redness and discomfort so skin looks healthy and radiant.



Farm Rx Green Goddess Cream
100mg CBD. Helps soothe and visibly reduce redness. Use AM/PM after serum. For added radiance, follow with Facial Oil. 3.04 fl. oz. 338-027 reg. \$44 \$32.99

Farm Rx Green Goddess High Dose Serum
300mg CBD. Skin feels softer and soothed. Use AM/PM after cleansing, before CBD cream or facial oil to visibly boost results. 1 fl. oz. 338-031 reg. \$50 \$37.99

Farm Rx Green Goddess Facial Oil
100mg broad spectrum CBD. Suitable for sensitive skin. Rich in omega acids and vitamin E. Use AM/PM, after cleansing and serum. Fragrance-free. 1 fl. oz. 934-733 reg. \$50 \$32.99



NEW

Jeju Aloe Hand and Body Lotion
With aloe vera extract, known to calm and soothe irritated skin and dry hands. Clinically proven to help dry skin feel nourished for 48 hours. 13.5 fl. oz.
069-441 reg. \$12 \$8.99

NEW

Jeju Aloe Body Wash
Helps moisturize dry skin while it cleanses, leaving skin feeling nourished. Light aloe scent. 13.5 fl. oz.
069-509 reg. \$12 \$8.99

Jeju Aloe Fresh Soothing Foam Cleanser

Gentle gel-to-foam formula hydrates as it cleanses. With soothing aloe, moisturizing panthenol and other refreshing herbal extracts such as cica, camellia leaf, licorice root and rosemary. 5 fl. oz.
450-090 reg. \$11.99 \$9.99



Jeju Aloe Fresh Soothing Mist

With 90% aloe vera extract. Oil-free. Instantly soothing and cooling. After cleansing, spray wherever skin feels dry. 4.4 fl. oz.
925-379 reg. \$16 \$12.99



Jeju Aloe Refreshing Face Mask

With soothing aloe, helps hydrate and nourish dry winter skin. Single-use mask. 1.01 fl. oz.
069-480 reg. \$3 \$2.50



Jeju Aloe Fresh Soothing Gel

With 95% aloe vera extract, instantly hydrates and soothes dry, sensitive skin. Infused with other soothing herbal extracts, like chamomile, lemon balm, rosemary and lavender. For face and body. 10.1 fl. oz.
984-304 reg. \$8 \$6.99



Jeju Aloe Fresh Ice Soothing Gel

3-in-1 gel with aloe vera extract. Use as moisturizer, soothing after-sun care or facial pack. Refrigerate for enhanced cooling. Apply to dry, sensitive, irritated areas of face and body. 10.1 fl. oz.
925-402 reg. \$11 \$8.99



**Rice Water Bright
Light Facial Cleansing Oil**

Removes every trace of makeup and gently cleanses impurities on skin. With jojoba oil and rice water extract, known to visibly brighten and moisturize skin. 5 fl. oz. **720-199** reg. \$14 **\$11.99**

**Rice Water
Bright
Facial
Cleansing
Lotion**

Rice bran oil helps brighten skin. Gently removes makeup and impurities. 6.76 fl. oz. **720-184** reg. \$12 **\$9.99**

**Rice Water Bright
Facial Massage Cream**

With rice water, enriched with vitamins, ceramide and minerals. Use after cleansing 2-3 times a week. 6.7 fl. oz. **450-200** reg. \$24 **\$19**



NEW

**Smaller Size!
Rice Water Bright
Foaming Cleanser**

Same formula as the 10 fl. oz. Rice Water Bright Foaming Cleanser in a more convenient size for your medicine cabinet. 5 fl. oz. **478-479** reg. \$8 **\$6.49**



**Rice Water Bright
Mild Cleansing Water**

Removes makeup and impurities with micelles, so no need to rinse off! Use with cotton pad. 16.9 fl. oz. **288-360** reg. \$14.40 **\$12**



**A. Rice Water Bright
Foaming Cleanser**

Light whipped foam leaves skin feeling cleansed and refreshed. With rice water and soapwort extract. Skin looks clear and bright. 10 fl. oz. **508-093** reg. \$13 **\$11**

**B. Rice Water Bright
Rice Bran Gentle
Exfoliating Cleanser**

Daily scrub with organic rice bran powder, rice bran oil and hydrated silica. 10 fl. oz. **376-865** reg. \$15.99 **\$12.99**

**C. Rice Water Bright
Cleansing Facial Wipes**

Great on the go. With rice extract to moisturize while cleansing. Removes eye makeup. 50 sheets. **508-108** reg. \$11 **\$9**



**Calendula
Essential Moisture**

Daily skin care for irritated and sensitive skin. With moisturizing calendula extract, a soothing herb complex, and the ultimate hydrator, hyaluronic acid.

A. Serum

A moisturizing and soothing serum that helps calm skin and enhance hydration. 1.35 fl. oz. **980-533** reg. \$13.50 **\$11.20**

B. Eye Cream

A lightweight, non-greasy, moisturizing and soothing eye cream. .67 fl. oz. **409-823** reg. \$12.50 **\$10.40**

C. Cream

A moisturizing cream that instantly hydrates while it gently helps soothe dry, itchy, irritated skin. 1.69 fl. oz. **465-400** reg. \$13.50 **\$11.20**



Rice & Ceramide Trial Kit

Moisturizing skin care set replenishes and refreshes your look. Try all three, or to use as a complete travel kit. Three-piece boxed mini sizes. Includes: Toner, 1.15 fl. oz.; Emulsion, 1.15 fl. oz.; Cream, 0.34 fl. oz. **543-617** reg. \$8.75 **\$7.20 the kit**



**Rice & Ceramide
Moisturizing**

D. Toner

Balancing. AM/PM, use after cleansing, before serum and moisturizer. 5 fl. oz. **124-142** reg. \$8.25 **\$6.80**

E. Emulsion

Replenishing. Semi-liquid. AM/PM, after cleansing or toning, before serum, moisturizer. 5 fl. oz. **876-976** reg. \$8.25 **\$6.80**

F. Cream

Moisturizing. AM/PM, after cleansing, toning and serum. 1.69 fl. oz. **124-635** reg. \$9.25 **\$7.60**



Herb Day 365 Amino Acid Facial Foaming Cleanser
Vegan mild hypoallergenic cleanser with cica. Formulated for optimal pH balance. For a moisturized and comforted feeling without tightness, even after cleansing. Each, 5.7 fl. oz. reg. \$11.50
\$9.60 each

Peony
Helps visibly boost skin clarity, and helps hydrate and soothe skin.
546-229

Aloe
Helps moisturize and soothe dry, itchy skin.
544-393



Herb Day 365 Master Blending Facial Foaming Cleanser - Mung Bean & Mugwort
For trouble-prone skin. Formulated with naturally derived herbal and fruit extracts, and coconut-derived moisturizing ingredients. Free of synthetic colorants and parabens. 5.7 fl. oz. **135-093**
reg. \$5.25
\$4.40



Herb Day Cleansing Tissue
Removes makeup and impurities. With soapwort, lady's mantle, lily, chamomile and cornflower.
20 sheets. **280-670**
reg. \$2
\$1.60
70 sheets. **134-450**
reg. \$5.75
\$4.80



The Face Shop Smile Foot Exfoliating Cream
A unique 2-in-1 daily foot exfoliating cream that removes dead skin cells as it soothes skin. With naturally moisturizing urea, which leaves feet feeling soft and hydrated.
4 fl. oz. **535-426**
reg. \$11.99
\$9.99



The Face Shop Rich Hand V Special Care Hand Mask
Coated masks contain nourishing lotion with sunflower seed oil and urea for instant moisturization. Two disposable masks, one for each hand.
541-724
reg. \$4
\$3



The Face Shop Smile Foot Mask
Disposable foot mask, with naturally moisturizing urea, shea butter and collagen, for baby-soft feet! Refreshes with peppermint oil. Contains two masks, one for each foot.
535-957
reg. \$4.79
\$3.99



The Face Shop The Solution Advanced Hydrating Face Mask
With hyaluronic acid, which holds 1,000 times its weight in water to help skin look youthfully plumped and baby-soft.
624-966 reg. \$3
\$2.50



Daily Moment Vegan Hand Cream
Deeply moisturizing daily vegan hand cream with a long-lasting scent. Eco-friendly and vegan-certified. Each, 1.0 fl. oz.
reg. \$4
\$3.29 each

1—Sunrise Bedroom
Bergamot, lavender and cedarwood.
741-940

2—Morning Florist
Lemon, Bulgarian rose and violet leaf.
741-955

3—Noon Park
Grapefruit, hyacinth and iris.
754-636

4—Sunset Rooftop
Pear, rose and patchouli.
757-931

5—Midnight Street
Cassis, rose and amber.
762-334

6—Dawn Attic
Orange blossom, pimento and vetiver.
762-353





**explosive hydration...
all over!**



BELIEVE IT!

3 steps in 1 balm → cream → oil

melts away makeup and impurities
while cleansing skin with hydration

**aqua bomb
makeup removing
cleansing balm**
*For dryness, dullness
& uneven texture*
Gently removes all traces of
makeup in one step. Smooth and
refreshing like sherbet. With lotus
flower and marshmallow root, herbs
known to help boost moisture and
radiance. No oily residue. For a
double cleanse, follow with
aqua bomb jelly cleanser. 3.3 fl. oz.
**443-179 reg. \$46
\$38**

BELIF believe in truth for your skin

**aqua bomb
hydrating body moisturizer**
*For dryness, dullness &
uneven skin tone*
A favorite lightweight gel
moisturizer, with lady's
mantle, an herb known for
its antioxidant and soothing
benefits—now for your body.
Intense hydration for visibly
firmer, clearer and brighter
skin. Silky finish. For all skin
types. 10.13 fl. oz.
**443-040 reg. \$36
\$30**

BELIEVE IT!
93%
**of people agreed
skin appears smoother***

*Based on a clinical study.

belif believe in truth
Aqua bomb hydrating body moisturizer
With skin brightening niacinamide
Instantly hydrates with a
soft lightweight gel texture?
Leaves skin feeling
smooth, not sticky?
Mineral oils
Synthetic
fragrances
Synthetic
organic dyes
Animal origin
ingredients
Dermatologically tested
With 2 Napiers formulas,
hyaluronic acid, niacinamide.
*The numbers represent percentage
of ingredients added



**the true cream
aqua bomb**
*For dryness, dullness
& uneven texture*
Water-based
refreshing gel-cream
cools and hydrates.
(Full size not available.)
Try-it size, .84 fl. oz.
**235-713 reg. \$24
\$22**



**the true cream
moisturizing bomb**
*For dryness, loss of
elasticity & firmness*
Creamy, cushiony, whipped
texture, envelops skin
with intense moisture.
Full size, 1.68 fl. oz.
**948-463 reg. \$42
\$38**
Try-it size, .84 fl. oz.
**498-139 reg. \$24
\$22**



**the true cream
aqua bomb aloe**
*For redness, irritation
& dryness*
Moisturizing gel-cream
with aloe vera extract to
instantly soothe skin, plus
hydrating hyaluronic acid
and smoothing vitamin E.
1.69 fl. oz.
**788-284 reg. \$42
\$38**



BELIEVE IT!

96%
of people said their
skin felt hydrated
after cleansing*

aqua bomb jelly cleanser
For dryness, dullness
& uneven texture
Jelly to foam. Amino acids
and glycerin-based cleansing
agents gently cleanse.
5.41 fl. oz. **445-353 reg. \$35**
\$30

*Based on a clinical study.

aqua bomb hydrating toner

For an extra boost
of hydration
Lightweight
water-based toner,
with hyaluronic
acid, honeysuckle
flower extract and
baobab tree seed
extract. Leaves
skin looking soft
and smooth
with a healthy-
looking glow. Use
after cleansing,
before serum and
moisturizer.
6.75 fl. oz.
952-974 reg. \$36
\$30



moisturizing eye bomb

For dryness, loss of
elasticity & firmness
Lightweight, refreshing eye
cream cools on contact.
Helps keep eye area looking
firm, resilient and smooth.
.84 fl. oz. **445-478 reg. \$53**
\$48



aqua bomb sleeping mask

For dull, dry, fatigued skin
Unique jelly-pudding texture!
Skin feels replenished
overnight. Explosive hydration
for smoother skin and a
healthy glow. 2.53 oz. net wt.
514-717 reg. \$42
\$38



Mission Luxereve Cream
Perfect for dry skin.
With luxurious oils and other
moisturizing ingredients for
a more youthful, sculpted
appearance. Use AM/PM,
after Mission Luxereve Serum.
In AM, follow with sunscreen.
1.76 oz. net wt.
635-740 reg. \$350
\$280



Mission Luxereve Lotion
Lightweight
hydration ideal
for normal skin.
Improves the
appearance of
elasticity and
firmness, and
helps even tone
and texture.
Use AM/PM,
after Serum.
In AM, follow
with sunscreen.
3.77 oz. net wt.
713-459 reg. \$95
\$80



Mission Luxereve Serum
Deluxe
regenerating
serum
formulated
to help boost
skin elasticity
and firmness.
Use AM/PM,
before
moisturizing
with Cream
or Lotion.
1.01 fl. oz.
635-754 reg. \$225
\$180



Avon Pure Essential Oil Eucalyptus
Refreshes the mind.
Rejuvenates the senses.
Use with either
Avon Pure Diffuser.
Not for use on skin.
.34 fl. oz.
098-724 reg. \$21
\$17



Avon Pure Ceramic Aroma Diffuser
Premium ceramic.
Whisper-quiet.
Also functions
as a humidifier.
BPA-free plastic
water reservoir.
Auto shutdown on
timer or when the
water runs out.
6.8 fl. oz. capacity.
Approx. 3 3/4" diam. x 6 3/4" H.
141-846 reg. \$71
\$57



Avon Pure Diffuser
LED light-up
diffuser with three
different settings
releases a fine
mist of essential
oil and water into
the air so that you
can easily fill your
space with the
essence of
the oils. 6 1/2" H.
USB connection.
915-424 reg. \$39
\$32



Avon Pure Essential Oil Case
Fits up to 48
essential oils and
roll-ons. Man-made
material with easy
maintenance. Two
padded stackable
trays for added
protection of glass
bottles. Includes
handle and
all-around zipper.
8 1/4" L x 6 1/8" W
x 7 1/2" H. **179-470 reg. \$51**
\$41



Avon Pure Roll-On De-Stress Essential Oil
With lavender
and peppermint.
Apply directly
on skin. Instantly
transform your
day. Contains
sweet almond
oil, a carrier oil.
.34 fl. oz.
098-963 reg. \$24
\$19



re:tune

INNER BEAUTY*

Feel good on the inside
so you can look great
on the outside.

ANTI-AGING ANTIOXIDANTS

Neutralize free radicals
and defend skin from
the look of aging



re:tune Inner Beauty Youth Boost
With ingredients that help improve
the clarity and hydration of skin
while boosting antioxidant levels to
help skin better defend itself from
the look of aging.* 60 tablets.
456-137
reg. \$34
\$28



RE:TUNE INNER BEAUTY feel good inside, look great outside

re:tune Inner Beauty Be Calm

Helps enhance your ability
to stay calm and focused.*
30 vegetarian capsules.
123-567
reg. \$38
\$31



re:tune Inner Beauty HydraBoost

Helps boost hydration and
visibly soften lines with
hyaluronic acid.*
30 vegetarian capsules.
122-761 reg. \$34
\$28



re:tune Inner Beauty Clear Complexion

Supports a visibly clear, even
complexion. Helps balance
the gut microbiome.*
30 capsules. 123-332
reg. \$36
\$30



re:tune Inner Beauty Hair, Skin & Nail Health

Promotes a healthy response
to skin stressors while helping
build healthy hair, skin and
nails.* 60 tablets.
396-908
reg. \$42
\$33



re:tune Inner Beauty Metabolism Boost

A natural, plant-based energy
and metabolism booster
that helps you burn more
calories.** 60 vegetarian
capsules.
907-195
reg. \$35
\$28



re:tune Inner Beauty Hydration

Supercharge your water for
optimal hydration and more
energy, and to boost skin health.
Contains electrolytes, B vitamins
and antioxidants.* Berry flavor.
20 packets. 966-140
reg. \$27
\$22



re:tune Inner Beauty Plant Protein Powder**

Non-GMO. Probiotics, enzymes
for easy digestion.* Vegan,
gluten-free, soy-free, no sugar
added. 15 servings.
Creamy Vanilla 332-473
reg. \$49
\$39



**Not
sold in
California.

re:tune Inner Beauty Hunger Block

Helps reduce your food
cravings for hours.*
60 vegetarian capsules.
906-920
reg. \$31
\$25



RE:TUNE INNER BEAUTY SET

Clear Complexion

30 capsules.
Hunger Block
60 vegetarian capsules.
2-PIECE SET
\$29.99
\$67 value
232-274



*These statements have not been evaluated by the Food and Drug Administration. This product is not intended to diagnose, treat, cure or prevent any disease. **With reduced dietary intake and exercise.

**FACE
MAKEUP &
TOOLS
SAVE UP
TO 30%!**

PAGES 71-79

helloH₂Glo!

Intensely hydrating
collection that
feels good and is
good for you!

GLOKOLOR Clean. Vegan. Hydration.

Rich serum
pampers lips.

**fmg GLOKOLOR
Lip Serum Pencil**
Infused with a burst
of peppermint oil, a
nourishing lip booster
complex and argan
oil. Lips feel smooth
and refreshed.
Free from parabens
and fragrance.
.06 oz. net wt.
**787-508 reg. \$20
\$14**



Ultrafine water-
based formula
awakens skin while
locking makeup
in place.

**fmg GLOKOLOR
Hybrid Face Mist**
Spritz it anytime,
anywhere for an
instant boost of
moisture to refresh
skin. With aloe vera,
agave and algae
extracts to help
soothe and nourish
the complexion.
Dermatologically
tested. Free from
parabens and sulfates.
2.7 fl. oz.
**787-599
reg. \$24
\$16**



Prep step with
instant boost
of moisture!

**fmg GLOKOLOR
Hybrid Face Primer**
Light, breathable
formula softens
the appearance of
imperfections while
creating a flawless
canvas for makeup.
With aloe vera,
agave and algae
extracts to help
soothe and nourish
the complexion.
Dermatologically
tested. Free from
parabens and
sulfates.
1 fl. oz.
**787-637
reg. \$24
\$16**



CASHMERE FACE

		
Nougat (W) 126-107		
		
Marshmallow (N) 131-849	Macadamia (W) 136-525	Ganache (WO) 136-889
		
Cappuccino (N) 136-893	Chai (WO) 136-559	Toasty (N) 139-027
		
Praline (N) 141-406	Tiramisu (W) 137-278	Soufflé (N) 139-730
		
Muffin (W) 142-307	Gingerbread (C) 142-311	Pudding (N) 146-097
		
Amaretto (N) 146-188	Latte (W) 147-480	Brownie (WO) 147-461
		
Hazelnut (W) 147-495	Cognac (W) 147-681	Pecan (N) 149-699
		
Java (W) 149-722	Clove (N) 149-756	Truffle (C) 150-263

Featured shade:
24 Hour Foundation In Java.

Good Housekeeping Magazine
2021 Beauty Award Winner.

fmg Cashmere 24 Hour Foundation*

24 hours of comfortable, breathable wear.
Full, flexible coverage. Soft-focus matte finish.
Visibly blurs pores and fine lines for a smoother complexion. With antioxidant botanical extracts.
Water-resistant. Vegan. 1 fl. oz. **reg. \$32**
\$19.99

*Available in Cool (C), Neutral (N), Warm (W) and Warm Olive (WO) undertones.











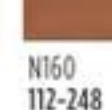

**Available in Cool (C), Neutral (N) and Warm (W) undertones.

CASHMERE FACE luxury in the shade of you

2-in-1 powder can be worn wet or dry.

fmg Cashmere Compact Powder Foundation**

Use as foundation or setting powder. Buildable medium-to-full coverage. Soft-focus matte finish. Controls shine. With collagen, lavender oil, and artichoke and chamomile extracts. .40 oz. net wt. **reg. \$36**
\$19.99

		
N110 107-830	W110 111-294	C110 111-313
		
W140 111-514	W160 111-533	N130 111-548
		
N140 111-605	W170 111-610	N150 111-658
		
W180 112-229	N160 112-248	C120 112-286

N150
111-658



Velvety soft-matte color.

fmg Cashmere Cushion Foundation**

Enriched with soothing calendula extract, moisturizing squalane and skin-brightening niacinamide. Helps to cover the look of imperfections. Light-to-medium coverage. Includes sponge puff applicator. Free from parabens, phthalates and fragrance. .42 oz. net wt. **reg. \$27**
\$19.99

			
W215 485-424	C215 485-481	W225 485-439	N225 485-496
			
C225 485-701	N235 485-500	W235 485-716	W245 486-784
			
N245 487-264	W255 488-639	N255 488-734	W265 488-749
			
N265 488-878	W275 488-863	W285 488-882	N275 489-051

W275
488-863



24 hours of comfortable, breathable wear.

fmg Cashmere 24 Hour Concealer*

Full coverage. Soft-focus matte finish. Visibly corrects dark circles and imperfections. With antioxidant botanical extracts. Water-resistant. .20 fl. oz. **reg. \$22**
\$13.99

		
Sugar (W) 109-484	Parfait (W) 113-058	Tart (WO) 115-012
		
Butterscotch (W) 115-156	Waffle (W) 115-869	Biscuit (WO) 116-650
		
Tres Leches (N) 119-424	Toffee (W) 123-662	Cupcake (N) 123-715

Tres Leches (N)
119-424



Enjoy these special prices and exclusive offers only when you shop with an Avon Representative.

MATCH MAKEUP

Tint + Moisturize + Glow

**fmg Magix Tint
Radiant Tinted Moisturizer***
Buildable coverage with a radiant finish. Evens skin tone, boosts moisture and blurs flaws. Suitable for all skin types. 1 fl. oz.
reg. \$14
\$8.99

*Packaging may vary.



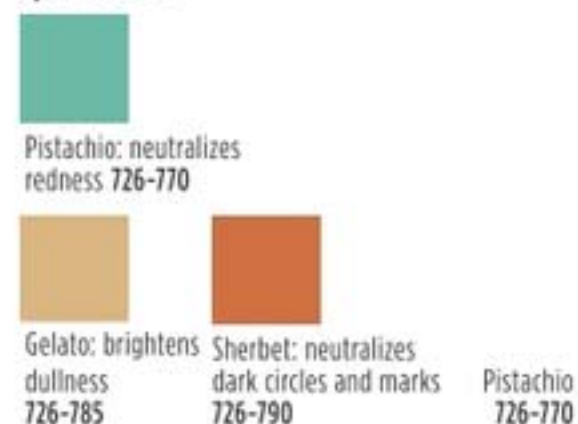
Instantly hydrates, blurs and evens tone!

fmg Match Filter Serum Tint Foundation
Infused with hyaluronic acid, vitamin E and a berry complex. Demi-matte powder finish. Buildable sheer-to-medium coverage. Suitable for all skin types. Includes sponge applicator. Free from talc, parabens and fragrance. .31 oz. net wt.
reg. \$18
\$12.99



Camouflage imperfections.

**fmg Match Wand
Correcting Stick**
Minimize skin concerns without creasing or caking! With shea butter and vitamin E. Free from parabens, phthalates, and sulfates. .21 oz. net wt.
reg. \$16
\$12.99



Conceal + Contour + Highlight

**fmg Match Wand
Foundation Stick**
Instantly blurs and perfects skin. Helps to control oil and shine. Full and flexible all-over coverage in a demi-matte finish. Water-resistant. With shea butter and antioxidant vitamin E. Perfect for easy touch-ups. Free from parabens, sulfates and phthalates. Vegan. .21 oz. net wt.
reg. \$16
\$11.19



Available in Warm (W), Neutral (N) and Cool (C) undertones.

MATCH MAKEUP



Mineral-infused loose powder and brush in one!

fmg Match Set Finishing Powder To-Go
Creates an invisible veil that controls shine and sets makeup. Lightweight formula diffuses light and visibly blurs pores and fine lines. Silky-soft matte finish never looks cakey. Free from talc, parabens and fragrance. .09 oz. net wt. **227-063**
reg. \$19
\$12.99



Creates an invisible veil that controls shine and sets makeup.

fmg Match Set Finishing Powder
Lightweight mineral-infused loose powder formula diffuses light and visibly blurs pores and fine lines. Silky-soft matte finish never looks cakey. Includes puff applicator. Free from talc, parabens and fragrance. .22 oz. net wt.
932-472
reg. \$17
\$13.99



Helps control oil and create a shine-free canvas.

fmg Match Blur Oil Control Primer Balm
Sheer mattifying formula. Special blurring powder microspheres help reduce the look of fine lines and pores. With nutmeg extract for antioxidant benefits. Includes sponge applicator. Free from talc and parabens. .59 oz. net wt.
932-381
reg. \$19
\$12.99



Blend of ultrafine rose quartz, ruby and tourmaline.

fmg Match Dust Finishing Powder
Weightless loose mineral powder diffuses light, visibly blurs pores and controls shine. Soft matte finish. Includes no-spill twist-and-lock sifter. Free from talc, oil and parabens. .21 oz. net wt. reg. \$17
\$13.99



Helps camouflage as it corrects and brightens.

fmg Match Corrector Brightening Perfector
Creamy veil of color helps blur flaws and reduce the appearance of fine lines, dark circles and blemishes. Buildable sheer-to-medium coverage with a demi-matte finish. Free from talc, parabens, sulfates, alcohol and fragrance. .11 oz. net wt.
reg. \$13
\$8.99



GLIMMER CHEEK + LIP

Brightens up lips and cheeks.

fmg Glimmer Lip & Cheek Stain

Highly pigmented shades that wear all day. Lightweight gel formula blends and builds like a dream, providing the perfect pop of gorgeous luminous color. Brush tip applicator. Transfer-proof. Free from parabens and fragrance. Vegan. .19 fl. oz.

reg. \$14
\$11.99

Plumeria
628-851

Rosette
628-832



Creamy formula for lips and cheeks.

fmg Glimmer Be Blushed Cheek Color

Creamy moisturizing formula glides on smoothly without streaking for a natural flush of color. Buildable coverage. Soft dewy finish. With skin-nourishing vitamin E for antioxidant benefits. Free from parabens, phthalates and fragrance. .14 oz. net wt.

reg. \$14
\$9.99

Icy Petal
022-854

Blushing
Nude
022-911

Tropical
Peach
022-964

Golden
Rose
022-840

Crushed
Berry
022-945

Blushing Nude
022-911



Instant pop of color.

fmg Glimmer Powder Blush

Richly pigmented, silky pressed powder hugs cheeks. Weightless formula with ultrafine pearl for added dimension and vivid payoff blends effortlessly. Buildable coverage and soft matte finish. With skin-nourishing vitamin E for antioxidant benefits. Free from parabens, phthalates and fragrance. .28 oz. net wt.

reg. \$14
\$8.99

Petal Pink
618-209

Pink Passion
618-213

Cranberry Crush
618-194



Petal Pink
618-209

TIP: Dust along
cheekbones, bridge
of the nose, brow
bones, collar bones
and shoulders.



Prosecco
905-580

Rosé
463-628

Subtle yet eye-catching radiance.

fmg Glimmer Powder Illuminator
Finely milled powder creates a multi-dimensional luminous glow instantly. Lightweight buildable formula with vitamin E builds and blends effortlessly, providing a naturally radiant finish. Free from parabens, phthalates and fragrance. .35 oz. net wt. reg. \$14
\$8.99 each

DUAL-ENDED BRUSHES & MORE

fmg Kabuki Brush

With soft, angled bristles to effortlessly blend pressed or loose powder formulas. Retractable. Cap keeps the brush head safely covered when not in use. 3 3/4" L x 1" diam. **732-370** reg. \$16 **\$12.59**



fmg Flawless Complexion Sponge

With a full rounded bottom for all-over makeup application and blending, and a flat side for contouring, highlighting and concealing. 1 1/2" W x 2 1/2" H. 100% PU, latex-free. **140-160** reg. \$9 **\$6.99**



fmg Eyeshadow Blending Brush

With a soft, domed crease brush on one end and a flattened, all-over eyeshadow brush on the other to apply and buff eyeshadow. 6" L. **933-320** reg. \$14 **\$9.59**



fmg Complexion Blending Brush

With a dense, rounded buffing foundation brush on one end and a precise, rounded concealer brush on the other to create a flawless canvas. 6 1/2" L. **933-210** reg. \$21 **\$14.59**



fmg Blush & Contour Brush

With a tapered, oval blush brush on one end and a fluffy, angled contour brush on the other to add color and dimension. 7 1/4" L. **933-259** reg. \$20 **\$13.79**



fmg Precision Eye Brush

With an angled eyeliner brush on one end and a pointed pencil brush on the other to highlight or add depth to eyes. 5 1/4" L. **933-187** reg. \$14 **\$9.59**



BRUSHES WITH GREATNESS

Our best brushes in one go-anywhere set!



Brush Set includes:
fmg Kabuki Brush
fmg Complexion Blending Brush
fmg Precision Eye Brush
fmg Eyeshadow Blending Brush
fmg Blush & Contour Brush

5-PIECE SET

\$29.99

\$85 VALUE

740-523

C21 | 79



Featured shades:
fmg Glimmer
Diamond Eyeliner in
Sugar Plum and
Teal Sparkle.

GLIMMER LINERS

Defines eyes perfectly.

fmg Glimmer Eyeliner*
Long-wearing.
Retractable.
Each, .01 oz. net wt.
reg. \$9
\$3.99 each

DIAMOND Olive 331-940	DIAMOND Sterling 331-960	DIAMOND Black Ice 331-610
DIAMOND Brown Sugar 331-568	DIAMOND Sugar Plum 331-625	DIAMOND Purple Rain 332-071
DIAMOND Twilight Sparkle 331-553	DIAMOND Teal Sparkle 331-606	DIAMOND Smoky Diamond 331-280
CREAM Blackest Black 334-366	CREAM Cosmic Brown 334-351	CREAM Majestic Plum 334-313
CREAM Starry Night 334-347	CREAM Emerald Green 334-332	CREAM Saturn Grey 334-328
WATERPROOF Smoky Grey 332-162	WATERPROOF Blackest Night 332-143	WATERPROOF Midnight Blue 332-158
WATERPROOF Blue Skies 334-237	WATERPROOF Brown Chocolate 332-124	WATERPROOF Raisin 332-200
WATERPROOF Seafoam Green 334-241		

Available in
Diamond: Finely milled pearl for a subtle sparkle.
Cream: Soft sheen finish.

Waterproof: Smudge-, transfer-, sweat- and waterproof.

*Packaging may vary.

GLIMMER LINERS



Prevents feathering.
fmg Glimmer Lipliner*
Precise application for sculpted lips. Prevents feathering. Matte finish.
.01 oz. net wt. reg. \$9
\$3.99

Honey Peach 327-721	Lava Red 327-740	Passion Red 327-650	Red Brick 330-451
Mystery Mauve 330-538	Candy Apple 327-903	Pink Bouquet 330-356	Merlot 330-284
Au Naturel 330-318	Simply Spice 330-614	Chocolate 330-667	Perfect Plum 330-887

Passion Red
327-650



Easy-glide, quick-dry precision felt-tip liner delivers rich color with long-lasting wear.
fmg Glimmer Liquid Eyeliner
Matte finish. Removes with ease using soap and water or makeup remover. Transfer-, sweat- and waterproof. .037 fl. oz.
Blackest Black 354-380
reg. \$12
\$9.99



Unique cap with built-in sharpener!
fmg Glimmer Always On Point Eyeliner*
Smudge- and waterproof. Creamy, smooth formula stays color-true all day. Free from parabens, sulfates and talc. .01 oz. net wt.
reg. \$9
\$6.79

Black
016-389

Black 016-389	Black Brown 016-446



For natural-looking brows.
fmg Glimmer Brow Definer*
Create fine hair-like strokes. Infused with nourishing castor oil, aiding in hair growth, and coconut oil. Smudge-, transfer-, sweat- and waterproof. Retractable. .01 oz. net wt. reg. \$9
\$3.99

Brunette
331-242

Light Blonde 331-109	Blonde 331-113	Tawny 331-128
Light Brown 331-151	Dark Brown 331-147	Brunette 331-242

GLIMMER SHADOWS



Color-coordinated shades work together for expressive eye looks that last all day.

fmg Glimmer Eyeshadow Quad

Creamy soft powder formula hugs lids with rich color for all-day wear, without the fallout. Free from parabens and fragrance. Available in Multi or All Matte. .21 oz. total net wt. reg. \$15

\$11.99



Vivid stay-all-day shimmery color.

fmg Glimmershadow Liquid Eyeshadow

Long-wearing, no-smudge, no-crease, buildable formula with no messy fallout. Ultrafine pearl finish. Water-resistant. Paraben-, phthalate- and sulfate-free. .07 fl. oz. reg. \$12

\$8.99



Available in 3 ultrafine pearl finishes: Matte Sateen, Shimmer or Glitter. Packaging may vary.

SHIMMER Pink Topaz 479-150



BROWS + LASHES

Universal clear shade for a professional sculpted look.

fmg Colors of LOVE Hi-Brow Sculpting Brow Gel

Flexible, flake-proof formula. With moisturizing aloe and nourishing hyaluronic acid. Soft matte finish. Tapered micro-brush ensures precise application. Wear alone or over your favorite brow products. Free from parabens, phthalates and fragrance. .11 fl. oz.

Universal Love (Clear)

536-695

reg. \$17

\$12.99



Amp up brows with a sweep of tinted gel for a full, fluffy look.

fmg Colors of LOVE Hi-Brow Tinted Brow Gel

Water-resistant, smudge- and flake-proof formula fills, grooms and shapes for 24-hour wear. With heart-shaped fibers, clay and vitamin E. Soft matte finish. Tapered micro-brush. .11 fl. oz.

reg. \$17

\$12.99



Volumizing and lengthening fibers.

LOVE at 1st Lash Mascara*

Transfer-resistant. Clump-, flake- and smudge-proof. Each, .3 fl. oz.

fmg Blackest Black 698-670

Waterproof Blackest Black

Cobra brush. Not shown.

293-805

reg. \$15

\$12.99 each



Long and healthy.

fmg Glimmer SuperExtend Nourishing Mascara

Enriched with vitamin E, argan and coconut oils. Won't clump, smudge or flake off. Each, .237 fl. oz.

Brown Black 698-852

reg. \$11

\$8.99



Super volume.

fmg Glimmer SuperShock Volumizing Mascara

Instant high-gloss lushness. .338 fl. oz.

Black 698-829

reg. \$11

\$8.99



Waterproof volume.

fmg Glimmer Wash-Off Waterproof Mascara

Washes off easily with soap and water. .21 oz. net wt.

Black 723-107

reg. \$10

\$7.99



*Packaging may vary.

GLIMMER LIP + NAIL

Enticing and inspiring spectrum of versatile and expressive shades.

fmg Glimmer Satin Lipstick
Lightweight, smooth and creamy formula. Infused with antioxidant pomegranate extract. Buildable medium-to-full coverage. Soft satin finish. .10 oz. net wt. reg. \$11
\$8.49

Windstorm 883-845	Equinox 449-818	Twilight 449-822	Sierra Sunset 890-805	Cyclone 890-566
Desert Moon 449-803	Aster 448-769	Honeyflower 726-531	Stellar 726-550	Luna 895-170
Poppy 897-651	Songbird 897-647	Constellation (Shimmer) 449-731	Blaze 896-880	Wild Cherry 449-708
Dahlia 726-350	Rose Angel 897-939	Aurora 726-584	Wildflower 898-040	Hibiscus 898-021
Plum Blossom 449-765	Wildrose 898-533	Eclipse 448-740	Tulip 449-712	Celestial 895-352
		Morning Glory 449-750	Violet Night 898-548	Nova 898-552



SATIN
Night Sky
Berry
740-629

Max shine and vivid color for a salon-worthy manicure that lasts!

fmg Glimmer Nail Lacquer
Gel-like cushion texture. Nail-strengthening formula dries smooth and even for lasting wear that does not chip. No UV light needed. Free from parabens, talc, gluten, phthalates and fragrances. .4 fl. oz. reg. \$10
\$7.99

SATIN Black Hole Burgundy 740-648	SATIN Night Sky Berry 740-629	SATIN Supernova Red 740-633	SATIN Lost Galaxy Plum 740-614	SATIN High Magnitude Mauve 740-781
SATIN Full Moon Flush 740-671	SATIN Cool Comet 740-667	SATIN Lunar Tan 740-652	METALLIC Meteorite Rose 740-800	METALLIC Golden Galaxy 740-796

GLIMMER LIP + NAIL

NEW

High shine and sheer color in one!

fmg LOVE Lip Butter
Ultra-creamy formula with cupuaçu seed butter, mango extract and apricot kernel and olive fruit oils, leaves lips feeling soft. Buildable coverage. .09 oz. net wt. reg. \$17
\$14.99

Love Affair 063-242	Pucker Up 063-128	Secret Crush 063-147
Tease 063-132	Flirtatious 063-219	Rendezvous 063-166

Love Affair
063-242



Sugar-based formula gently buffs away dry, flaky skin.

fmg Glimmer Lip Polish
Helps polish and prepare lips for effortless color application. Blend of vitamin E, moisturizing squalane, and extracts of blueberry, strawberry and raspberry leaves lips feeling soft and supple. .35 oz. net wt. 594-677 reg. \$14
\$10.99



Drench lips in dimensional color and shine.

fmg Glimmer Lip Glaze
Non-sticky creamy formula gives hours of wear without feathering. With antioxidant vitamin E. Buildable sheer-to-medium coverage. .3 fl. oz. reg. \$11
\$8.99

		
Shine 691-145	Glisten 691-179	
		
Sparkle 691-217	Gleam 691-198	Flash 691-183

Gleam
691-198



Keep your pout soft and kissable!

fmg Glimmer Lip Conditioner
With mango seed butter, vitamin E, and jojoba and sunflower seed oils. Leaves dry, cracked lips feeling soft and smooth. .12 oz. net wt. 794-578 reg. \$12
\$8.99



Get mistake-free manis at home.

fmg Glimmer Nail Lacquer Eraser Pen
Glide over nail edges after applying nail lacquer for a clean and perfected manicure. .135 fl. oz. 704-443 reg. \$10
\$7.49



A burst of vivid color with a featherlight feel and velvety soft matte finish.

Mattitude Liquid Lip
Weightless, non-drying formula that lasts for hours. Poppy seed oil and vitamin E nourish lips. .13 fl. oz. reg. \$13
\$10.99

		
Driven 750-664	Resolute 750-679	
		
Relentless 750-607	Tenacious 750-683	Persistent 750-626

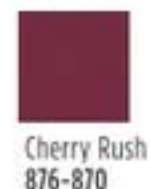
Relentless
750-607





Good Housekeeping
Magazine 2022
Beauty Award Winner

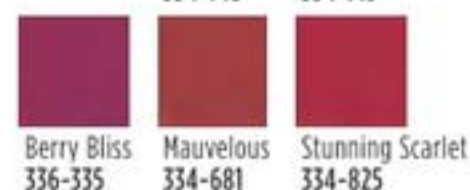
**fmg Cashmere
Essence Lipcream**
Plant-based Bio-Retinol,
known for effective anti-
aging properties without
the harsh irritation,
improves lip hydration
and protection. With
ginseng cell extract,
antioxidant meadowfoam
seed oil and vitamin E.
High-shine finish.
.11 oz. net wt. reg. \$22
\$18



Featured
shade: fmg
Cashmere
Essence in
Summer Berry.

Lush color and shine.

fmg Cashmere Rouge Lacquer
High-performance all-day wear.
Dual-ended. Full-coverage color
dries quickly without feathering.
Moisturizing top coat locks color
in place for a high-shine finish.
Transfer-, smudge- and feather-proof.
.20 oz. total net wt. reg. \$22
\$18



Mauvelous 334-681



CASHMERE EYE + BROW

Intense, decadent black
shades with dazzling
jewel undertones for
dramatic results.

**fmg Cashmere
24 HR Cream Eyeliner**
Comfortable kohl formula
with 24-hour wear. Waterproof,
matte finish. Smudge applicator
to blend. Vegan. Paraben-,
phthalate- and fragrance-free.
.04 oz. net wt. reg. \$18
\$15



After Dark
566-845

Expertly curated 9-shade palettes
to create an array of looks.

fmg Cashmere Eyeshadow Palette
Long-wearing creamy powder shadows in
satin, matte and sparkling finishes. Crease-
and smudge-proof. Talc-, paraben- and
fragrance-free. .63 oz. total net wt. reg. \$40
\$33 each



Enchanted Eyes
401-440



Essential Eyes
404-745

Smoother, brighter,
flawless-looking eyes.

**fmg Cashmere
Under Eye Primer**
Helps concealer wear all
day. Infused with caffeine,
green tea extract and vegan
collagen, to help diminish the
appearance of dark circles,
puffiness and fine lines. Free
from parabens, phthalates
and fragrance. .317 oz. net wt.
010-429 reg. \$22
\$18



Fills in brows as it boosts color.

fmg Cashmere 24 Hour Brow Pomade
Smudge-proof, sweat-proof formula. Matte
finish. Comes with dual-ended applicator with
angled-tip brush and spoolie,
4 1/2" L. .14 oz. net wt.
reg. \$24
\$20



Ash Brown 423-208 Dark Brown 423-227 Black Brown 423-212



Light Brown
423-705

Lash-building primer
that visibly lengthens
and boosts volume.

**fmg Cashmere
Eyelash Primer**
Nourishing formula keeps
lashes looking healthy and
strong with biotin and
collagen. Maximizes the
performance of any mascara
for gorgeous, lush lashes.
Vegan. Cruelty-free. .35 fl. oz.
948-391 reg. \$22
\$18

Sweep primer
on lashes, then
apply mascara.



Rich black pigmented
formula with extreme
staying power.

**fmg Cashmere
Ultimate Volume
Mascara**
Leaves lashes feeling
soft. Won't budge,
smudge or transfer.
Triple sphere brush
hugs lashes. Removes
easily. Vegan. .27 fl. oz.
Rich Black 153-736
reg. \$22
\$18



TPSY

Ultrafine felt tip sculpts, fills and shapes brows and enhances your look to perfection.

TPSY Snatched Brow & Freckle Marker
Long-wearing formula. Free from paraben and talc. .01 oz. net wt. reg. \$15 \$12



Espresso Martini
860-420



Gloss? Balm? Even better!

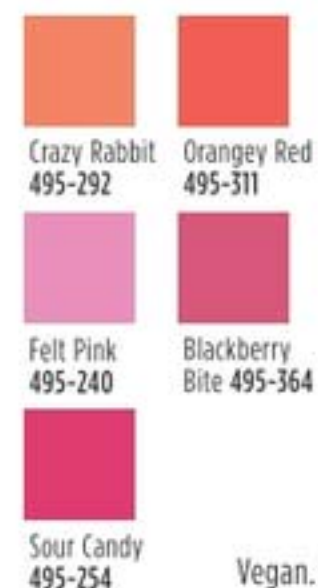
TPSY Drunk Shiny Lip Oil
A deeply moisturizing lip oil that is instantly absorbed with a tint of color and matches every lip. No hassle. No residue. No stickiness. Infused with jojoba, argan and castor oils. Use alone or over your fave Forever Lip Marker. .13 oz. net wt. reg. \$15 \$12



My Boo
495-216

Get kiss-ready with the perfect partner.

TPSY Forever Lip Marker
Hydrating formula that stays on lips all day. Unique marker design allows for easy application. Kiss-proof. .08 fl. oz. reg. \$15 \$12



Sour Candy
495-254



A drop of glow!
TPSY I Want to Highlight You Liquid Highlighter
Use as a gloss primer and highlighter, or mix into your makeup to customize your shine! Solar Glow Highlighting Complex formula with moisturizing ingredients and ultra-fine pearls for a subtle dewy finish. 1.01 fl. oz. reg. \$18 \$15



CATHYCAT

Create a sultry cat-eye look with this rich, long-wearing liquid liner.

fmg CathyCat Nine Lives Precision Liquid Eyeliner
Slim-tip brush delivers a precise line of waterproof and sweat-proof color that will not skip, tug or smudge. .068 fl. oz. **Blackest Black** 800-829 reg. \$18 \$14.99



Perfectly designed false lashes add length, dimension and volume.

fmg CathyCat LushLashes
Vegan. Includes one pair of false lashes and glue. Available in two flirty styles! reg. \$11 \$8.99 each



Soft & Sultry
959-304



Fierce & Flared
960-050

No-budge, water-resistant lashes, from dawn to dusk.

fmg CathyCat Play All Day Mascara
Long-wearing mascara coats each lash with rich pigments that will not budge or smudge for nine lives of perfect wear. Nourishing formula with a blend of conditioning coconut and argan oils and lash-supporting panthenol. Removes easily with soap and water. .28 oz. net wt. **Blackest Black** 904-712 reg. \$17 \$13.99



Lengthen, curl and captivate!

fmg CathyCat Curl & Flare Mascara
Long-lasting mascara applies evenly. Uniquely curved brush provides major lift, extraordinary curl and impressive length. Nourishing formula with a blend of conditioning coconut and argan oils and lash-supporting panthenol. .28 oz. net wt. **Blackest Black** 901-269 reg. \$17 \$13.99



Take your brow game to new heights!

fmg CathyCat High Arch Precision Brow Pencil
Long-wearing cream-to-powder pencil glides on smoothly, creating a well-defined look. Waterproof formula stays in place without budging or smudging for perfectly gorgeous brows. .01 oz. net wt. reg. \$15 \$11.99



Brown
837-442



Matte shadow stick colors and defines for all-day play.

fmg CathyCat Shadow Gaze Matte Color Stick
Comfortable, long-wearing formula provides the perfect amount of playtime for blending and building color intensity. Once the shade sets, it will not budge or smudge. .0476 oz. net wt. reg. \$17 \$13.99



Rosewood 958-547



NEW

fmg Set & Fix Spray
Lightweight formula controls oil and creates a protective shield, keeping makeup smudge-proof and looking fresh all day. Conditions and smooths skin. Ultrafine mist dries quickly to an invisible finish. Non-greasy, non-sticky. Free from parabens, sulfates, phthalates and silicones. 1.7 fl. oz. **416-707**
reg. \$15
\$9.99



PRO TIP: Spritz your brush with the fmg Set & Fix Spray prior to pressing into eyeshadow to intensify your eye makeup!

KEEP YOUR GORGEOUS GOING

No more makeup meltdowns!
A quick spritz helps set your makeup in place.

MAKEUP MUST-HAVES

fmg Vanity Organizer
Makeup-theme print. Four compartments with two removable inside dividers, three outer pockets and lattice elastic straps. Folds up for easy storage. 9 1/2" L x 6" W x 5" H. Polyester. Imported.
022-816 reg. \$30
\$22.99



fmg Unready Makeup Remover Cloth
Dual-sided cloth makes makeup removal quick and easy. Soft short fibers remove makeup while the longer fibers gently exfoliate the skin. Travel-friendly. 100% polyester. 9 7/8" sq. Machine wash and dry. Imported.
230-176
reg. \$12
\$9.99



fmg Makeup Remover Wipes
Formulated with antioxidant vitamin E and an extract blend of aloe, chamomile, cucumber, marshmallow root and soothing oat. Leaves skin feeling soft and clean. Fragrance-free. Resealable pack of 24 wipes.
333-867 reg. \$9
\$7.49 each



fmg Oil Rewind Roller Ball
Instantly absorbs oil and grease. Control shine throughout the day without disturbing makeup. Reusable 360° rotating volcanic-stone roller helps to absorb excess oil, leaving skin with a light matte finish. Ideal for touching up makeup on the go. Clean after each use. 1" W x 3" H. Plastic handle, protective cap. Imported. **508-294**
reg. \$16
\$12.99



fmg Moisturizing Eye Makeup Remover Lotion
Cleans, refreshes and moisturizes around the delicate eye area as it whisks away makeup. 2.5 fl. oz.
543-272
reg. \$8
\$5.99



fmg Express Makeup Brush Wash
Contains soothing aloe vera and green tea extract. No leftover residue. Alcohol-free. 1 fl. oz. **141-368**
reg. \$12
\$9.99



fmg Waterproof Lip & Eye Makeup Remover
Dual-layer moisturizing oil and water remover leaves skin fresh and clean. Mineral-, talc- and paraben-free. 3.7 fl. oz.
352-243
reg. \$12
\$7.99





IT'S YOUR
LIFE
OWN IT



Enjoy special prices and offers with an Avon account or Representative.



FREE Avon Classics Night Magic Cologne with any \$30 women's fragrance purchase, pages 92-108. \$18 value. Sold separately on page 107. Limited quantities.

NEW

Live Out Loud #4U
Eau de Parfum
fruity floral
Express yourself with a fresh scent brimming with exuberance.
1.7 fl. oz. **735-968**
reg. \$40
\$26.49

Top: **Juicy Mandarin**,
Pineapple, Bergamot

Mid: Orange Flower,
Peach Blossom,
Black Currant

Dry: **Sweet Vanilla**,
Musk, Patchouli

Live Out Loud
Eau de Parfum
fruity floral
A free-spirited statement of fierce independence and vibrant energy.
1.7 fl. oz. **142-000**
reg. \$40
\$26.49

Top: Juicy Mandarin,
Sweet Wild Strawberry,
Luscious Pear

Mid: Jasmine Petals,
Honeysuckle,
Sparkling Mimosa

Dry: Apricot Skin,
Sheer Patchouli,
Fluffy Vanilla



NEW

Rêve en Cube
Letter from the Stars
Eau de Parfum
fruity floral
Radiant grapefruit,
sweet gardenia
and jasmine.
3.4 fl. oz.
809-238
reg. \$70
\$59



Rêve en Cube
Misty Green Eau de Parfum
soft floral
Bergamot, lily of the valley
and white musk.
3.4 fl. oz.
850-863
reg. \$70
\$59



Ginza Stefany
Wish You Were Here
Eau de Parfum
fruity floral
Sweet hawthorn
berry, ripe pear and
sensuous patchouli.
1.69 fl. oz.
405-149
reg. \$40
\$34



Today Eau de Parfum
soft floral
Magnolia blossoms,
hibiscus petals and
silk musk. 1.7 fl. oz.
325-920
reg. \$30
\$26.49



Leaves skin feeling soft,
silky and beautifully scented,
with no greasy residue!

NEW

LIMITED EDITION

Dry Oil Spray
Quickly absorbed lightweight
nourishing oil replenishes
moisture instantly. Use on
damp skin for the perfect
post-shower glow.
Each, 3.25 fl. oz.
reg. \$22
\$17.99 each

Today
soft floral
Magnolia blossoms,
hibiscus petals and
silk musk.
463-886

Avon Prima
amber floral
Delicate plum,
pink rose and
white patchouli.
463-910



A VEIL
OF
LUXURY

Haiku

Haiku
fresh green floral

Top: Japanese Yuzu, Sweet Pomegranate, Summer Pear

Mid: Muguet, Freesia, Tuberose

Dry: Blonde Woods, Soft Musks, Vetiver

Original Eau de Parfum
1.7 fl. oz. 601-030
reg. \$25
\$18.99

Intense Eau de Parfum
1.7 fl. oz. 097-110
reg. \$31
\$25.99

Intense Travel Spray
.3 fl. oz. 880-353
reg. \$16
\$12.99

Hair & Body Mist
3.25 fl. oz. 572-574
reg. \$16
\$11.99

Intense Luxury Body Crème
5 fl. oz. 806-239
reg. \$23
\$18.99



HAIKU serene. divine. elegant.

Haiku Sacred Intense
fruity floral
Discover a divine blend of uplifting tangerine, rose de mai and earthy driftwood, balancing the beauty of nature.

Eau de Parfum
1.7 fl. oz.
579-750
reg. \$31
\$25.99

Luxury Body Crème
5 fl. oz.
580-000
reg. \$23
\$18.99



Haiku Kyoto Flower
fresh green floral
Violet leaf, white peony and soft cotton musk.

Original Eau de Parfum
1.7 fl. oz.
144-352
reg. \$25
\$18.99

Intense Eau de Parfum
1.7 fl. oz.
578-811
reg. \$31
\$25.99



Haiku Reflection
Eau de Parfum
fresh green floral
Radiant water accord, acacia blossom and amber wood.
1.7 fl. oz.
617-657
reg. \$25
\$18.99



Enjoy special prices and offers with an Avon account or Representative.

C21 | 97

Far Away

A wanderlust for the exotic.

Far Away
amber floral

Top: Bergamot,
Freesia, Peach

Mid: Jasmine
Absolute,
Ylang-Ylang,
Orange Blossom

Dry: Vanilla
Absolute, Musk,
Enticing Amber

Original
Eau de Parfum
1.7 fl. oz.
685-712
reg. \$25
\$18.99

Intense
Eau de Parfum
1.7 fl. oz.
931-332
reg. \$31
\$25.99

Shimmering
Body Mist
3.25 fl. oz.
618-945
reg. \$20
\$15.99

Hair & Body Mist
3.25 fl. oz.
572-536
reg. \$16
\$11.99

Intense Luxury
Body Crème
5 fl. oz.
806-300
reg. \$23
\$18.99

FRAGRANCE



Enjoy special prices and offers with
an Avon account or Representative.



**Far Away Bali
Eau de Parfum**
fruity floral
Sparkling grapefruit,
salted tuberose and
golden amber.
1.7 fl. oz.
451-389
reg. \$25
\$18.99



**Far Away Infinity
Eau de Parfum**
fruity floral
Radiant bergamot,
jasmine sambac and
sensual sandalwood.
1.7 fl. oz.
318-481
reg. \$25
\$18.99



**Far Away Gold
Eau de Parfum**
amber floral
Ylang-ylang,
Indian jasmine and
Madagascar vanilla.
1.7 fl. oz.
685-727
reg. \$25
\$18.99

FRAGRANCE SETS save on all your faves



SET INCLUDES:

Far Away Eau de Parfum
amber floral
Freesia, sheer jasmine and enticing
amber. 1.7 fl. oz.

Far Away Shampoo
11.8 fl. oz.

Haiku Eau de Parfum
fresh green floral
Japanese yuzu, delicate muguet
and blonde woods. 1.7 fl. oz.

3-PIECE SET
\$25.99
\$63 VALUE
995-953



SET INCLUDES:

Far Away Eau de Parfum
1.7 fl. oz.

Far Away Shampoo
11.8 fl. oz.

Haiku Kyoto Flower Eau de Parfum
fresh green floral
Violet leaf, white peony and
soft cotton musk. 1.7 fl. oz.

3-PIECE SET
\$25.99
\$63 VALUE
995-972



SET INCLUDES:

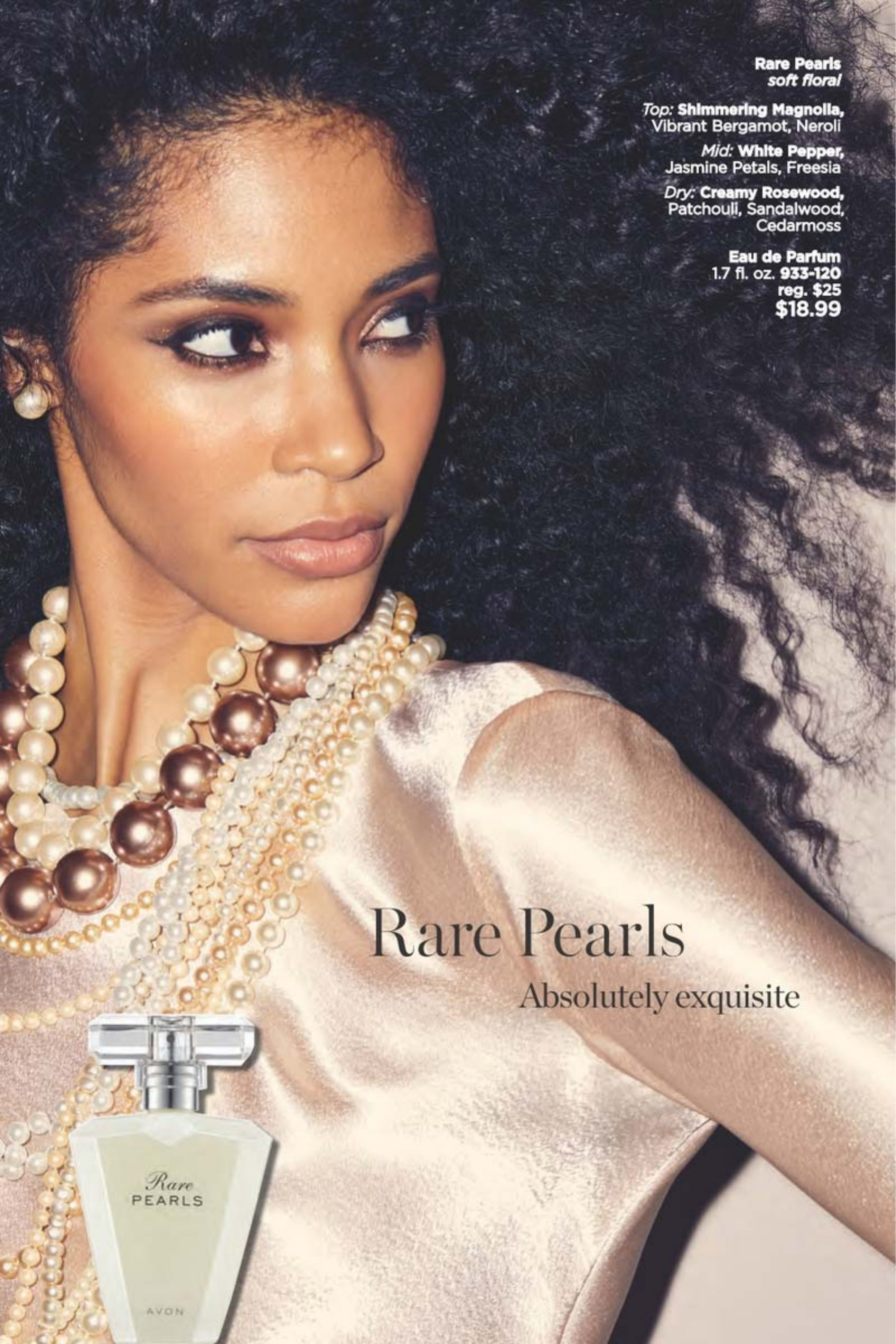
Far Away Eau de Parfum
1.7 fl. oz.

Far Away Shampoo
11.8 fl. oz.

Haiku Reflection Eau de Parfum
fresh green floral
Radiant water accord,
acacia blossom and amber wood.
1.7 fl. oz.

3-PIECE SET
\$25.99
\$63 VALUE
996-065

Far Away Shampoo sold separately on Avon.com.



Rare Pearls
soft floral

*Top: Shimmering Magnolia,
Vibrant Bergamot, Neroli*

*Mid: White Pepper,
Jasmine Petals, Freesia*

*Dry: Creamy Rosewood,
Patchouli, Sandalwood,
Cedarmoss*

Eau de Parfum
1.7 fl. oz. **933-120**
reg. \$25
\$18.99

Rare Pearls
Absolutely exquisite



RARE a treasure beyond compare

**Rare Gold
Intense
Eau de Parfum**
amber floral
Opulent notes of
mandarin zest,
ylang-ylang and
golden amber.
1.7 fl. oz.
784-126
reg. \$31
\$25.99



**Rare Pearls
Hair & Body Mist**
soft floral
3.25 fl. oz.
572-851
reg. \$16
\$11.99



**Rare Amethyst
Eau de Parfum**
fruity floral
Passionate plum,
blooming violet and
rich sandalwood.
1.7 fl. oz.
933-062
reg. \$25
\$18.99



IMARI AMOR

the first blush of love



Imari Amor woody floral

Top: Mandarin, Lychee,
Black Currant, Green Notes

Mid: Rose, Jasmine, Neroli,
Ylang-Ylang, **Precious Orris**

Dry: Sandalwood, Amber,
Patchouli, **Warm Musk**

Eau de Parfum
1.7 fl. oz.
762-573
reg. \$25
\$17.99

IMARI embrace your desire

Imari Seduction
Eau de Toilette
amber floral
1.7 fl. oz.
452-897
reg. \$25
\$18.99

Top: Succulent Plum,
Wild Berries

Mid: **Purple Orchid**,
Patchouli

Dry: Vanilla Bean,
Amber, Sensual Musk



Imari
Eau de Toilette
amber floral
1.7 fl. oz.
871-496
reg. \$25
\$18.99

Top: **Italian Bergamot**,
Peach, Iris

Mid: **Tempting Jasmine**,
Moroccan Rose

Dry: Vanilla Orchid,
Patchouli, **Amber**

Enjoy special prices and offers with an Avon account or Representative.

L I V E

Y O U R

D R E A M

**Avon Classics
Dreamlife**
soft floral
A magical blend perfect
for every fantasy.

Top: **Mimosa Flower,**
Hyacinth, Apricot

Mid: **Aspirational Rose,**
Ylang-Ylang, Vanilla

Dry: Patchouli,
Sandalwood,
Glowing Amber

Cologne
1.7 fl. oz. **236-227**
reg. \$18
\$11.99



AVON CLASSICS

ALWAYS
BEAUTIFUL

Timeless Cologne
soft floral
Cardamom, jasmine
and patchouli.
1.7 fl. oz.
037-930
reg. \$18
\$11.99



Topaze Cologne
soft floral
Jasmine, rose
and sheer musk.
1.7 fl. oz.
735-217
reg. \$18
\$11.99



Night Magic Cologne
woody floral
Neroli, jasmine
and musk.
1.7 fl. oz.
168-682
reg. \$18
\$11.99



Sweet Honesty Cologne
soft floral
Lily of the valley,
rose and cedarwood.
1.7 fl. oz.
037-595
reg. \$18
\$11.99



Odyssey Cologne
soft floral
Tuberose,
ylang-ylang and
warm oakmoss.
1.7 fl. oz.
168-697
reg. \$18
\$11.99



Free O₂
Eau de Toilette
fresh green floral
White peach tea,
airy honeysuckle
and musk.
1.7 fl. oz.
265-658
reg. \$18
\$11.99



Candid Cologne
amber floral
Bergamot,
tuberose and
patchouli.
1.7 fl. oz.
038-295
reg. \$18
\$11.99



Enjoy special prices and offers with an Avon account or Representative.

C21 | 107

LYRD Artisan Cannabis Oud Eau de Parfum
fresh citrus
 Sweet pomelo, rich agarwood and earthy cannabis leaves. Contains .01% of CBD. This eau de parfum does not contain THC. 1.7 fl. oz. **254-544** reg. \$60 **\$49**



LYRD Oud Rose
woody floral
 Spicy saffron, romantic rose and velvety patchouli.

Eau de Parfum
 1.7 fl. oz.
954-412
 reg. \$38
\$32

Travel Spray
 .3 fl. oz.
448-496
 reg. \$21
\$17



LYRD Sparkling Neroli Eau de Parfum
fresh citrus
 Sparkling neroli, bergamot and warm musk. 1.7 fl. oz. **572-521** reg. \$36 **\$29**



LYRD Honeysuckle Blossom Eau de Parfum
soft floral
 Apple blossom, honeysuckle nectar and vanilla orchid. 1.7 fl. oz. **616-282** reg. \$24 **\$20**



LYRD Peony Rosé Eau de Parfum
soft floral
 Peony petals, pink currant and sheer musk. 1.7 fl. oz. **616-210** reg. \$24 **\$20**



Seasonal Delights

Get ready for the holidays!
 Apple picking, tree trimming
 and pumpkin pie, oh my!

NEW

LIMITED EDITION

◆ **LYRD Candle**
 3-wick, 11 oz. candle gives 30 hours of burn time. 4 1/4" diam. x 3 1/8" H. Glass jar, paper dust cover, soy blend wax. Assembled in USA. reg. \$25 **\$19.99 each**

◆ **LYRD Enchanted Snowy Forest Candle**
 Take a magical walk in a winter wonderland as fresh snow falls and the air fills with notes of frost, pine and smoked woods. **082-069**

◆ **LYRD Let's Go Apple Picking! Candle**
 Family fun time at the apple orchard! Delight in the aroma of cozy cinnamon, juicy red apple and crisp cashmere woods. **082-001**

◆ **LYRD Sticky Cinnamon Goodness Candle**
 Yummy! Fluffy warm dough drizzled with sinfully sweet cinnamon sugar and ooey-goey golden caramel. **082-020**

◆ **LYRD Save Room for Pumpkin Coconut Pie Candle**
 Did someone say pie? A warm fall hug with notes of shredded coconut, creamy pumpkin puree and sweet vanilla bean extract. **082-054**

Never leave burning candles unattended. Keep away from children and pets.

MESMERIZE captivate at a single glance



Mesmerize Ultimate
Eau de Toilette
woody fougère
Black pepper, zesty pomelo and
sensuous patchouli. 3.4 fl. oz.
897-030 reg. \$36
\$27.99

Mesmerize Platinum
Ultimate Eau de Toilette
woody floral
Crisp pear, violet
and warm amber.
3.4 fl. oz.
179-633
reg. \$36
\$27.99



Mesmerize Platinum
Ultimate Body Moisturizer
6.7 fl. oz.
749-300
reg. \$19
\$14.99



Mesmerize Cologne
fresh aromatic
Bergamot, spicy
cardamom and amber.
3.4 fl. oz.
871-458
reg. \$25
\$18.99



Mesmerize Black
Eau de Toilette
woody fougère
Pepper, addictive nutmeg
and tonka bean.
3.4 fl. oz.
305-667
reg. \$25
\$18.99



FRAGRANCE SETS save on all your faves



SET INCLUDES:

Mesmerize Black Eau de Toilette
woody fougère
Pepper, addictive nutmeg and
tonka bean. 3.4 fl. oz.

Black Suede Eau de Toilette
fresh aromatic
Fusion of bergamot, soft leather
and oak moss. 3.4 fl. oz.

Black Suede Roll-On
Anti-Perspirant Deodorant
2.6 fl. oz.

3-PIECE SET
\$19.99
OVER \$50 VALUE
468-797



SET INCLUDES:

Mesmerize Cologne
fresh aromatic
Bergamot, spicy cardamom
and amber. 3.4 fl. oz.

Black Suede Eau de Toilette
3.4 fl. oz.

Black Suede Roll-On
Anti-Perspirant Deodorant
2.6 fl. oz.

3-PIECE SET
\$19.99
OVER \$50 VALUE
468-854



SET INCLUDES:

Mesmerize Black Eau de Toilette
3.4 fl. oz.

Mesmerize Cologne
3.4 fl. oz.

Mesmerize Platinum
Ultimate Body Moisturizer
woody floral
Crisp pear, violet and
warm amber. 6.7 fl. oz.

3-PIECE SET
\$30.99
\$69 VALUE
161-009

BLACK SUEDE ULTIMATE

EFFORTLESSLY COOL

**Black Suede
Ultimate**
woody fougère
A dynamic blend of
lemon, rich lavender and
tonka bean.

Eau de Toilette
3.4 fl. oz.
792-412 reg. \$27
\$22.99

Body Moisturizer
6.7 fl. oz. 003-894 reg. \$19
\$14.99

Body Wash
6.7 fl. oz. 003-875 reg. \$19
\$14.99

**Black Suede
Eau de Toilette**
fresh aromatic
Fusion of bergamot,
soft leather and
oak moss.
3.4 fl. oz.
908-703
reg. \$22
\$14.99



**Black Suede
Hair & Body Wash**
5 fl. oz.
366-318
reg. \$8
\$3.99



**Black Suede
Aftershave
Conditioner**
3.4 fl. oz.
367-238
reg. \$8
\$3.99



Studio 1886 Gentleman
woody fougère
Dynamic blend of
geranium, black pepper
and cedarwood.

Eau de Toilette
1.7 fl. oz. 708-750
reg. \$50
\$39

Aftershave Lotion
6.7 fl. oz. 708-927
reg. \$16
\$12.99



Studio 1886 Legendary
Eau de Parfum
woody fougère
Vibrant lemon, crisp
lavender, patchouli
and salted amber.
1.7 fl. oz.
269-820
reg. \$50
\$39



Wild Country Cologne
fresh aromatic
A rugged blend of
lavender, coriander
seed and sandalwood.
3 fl. oz.
086-466
reg. \$22
\$14.99



**Wild Country
Hair & Body Wash**
5 fl. oz. 364-080
reg. \$8
\$3.99



**Wild Country
Aftershave Splash**
4 fl. oz.
366-432
reg. \$13
\$10.49



Perceive Cologne
fresh aromatic
Sparkling citrus, sage
and cedarwood.
3.4 fl. oz.
194-550
reg. \$25
\$18.99



**Avon Exploration
Eau de Toilette**
fresh aromatic
Fresh orange, silver
sage and vetiver.
2.5 fl. oz.
593-666
reg. \$25
\$18.99



Avon Classics Hand Cream

Moisturizing formula with jojoba seed oil and vitamin E. Leaves skin lightly scented. Each, 2.5 fl. oz.

Sweet Honesty 234-789

Night Magic 235-440

Timeless 234-740

reg. \$6

\$3.99 each

**Body Scrub & Wash**

Gentle formula cleanses as it removes rough, dry skin. Skin is refreshed, smooth and beautifully scented. Each, 6.7 fl. oz.

Haiku 143-208

Far Away 143-360

reg. \$12

\$9.99 each

**Body Lotion**

Luxurious moisturizer leaves skin soft and scented. Each, 6.7 fl. oz.

Far Away 082-881

Rare Pearls 082-915

Haiku 447-820

reg. \$10

\$6.99 each

*Creamy softness***Perfumed Skin Softener**

Moisturizing formula leaves skin soft and scented.

Each, 5 fl. oz.

Haiku 813-973

Candid 103-926

Far Away 812-981

Night Magic

Evening Musk

104-129

Odyssey 104-171

Sweet Honesty

104-463

Timeless 104-478

Imari 818-239

reg. \$8

\$3.99 each

**Deodorant Stick**

All-day freshness in your favorite classic Avon scent! Nourishing formula glides on smoothly without leaving any residue. Lasting odor protection. Each, 1 oz. net wt.

Wild Country 692-012

Black Suede 705-602

Rare Pearls 727-891

Haiku 727-906

reg. \$12

\$9.99 each

Gentology**Herb & Aloe All-Over Wash**

For face, hair and body. With aloe and natural herbal extracts.

10.1 fl. oz.

533-347

reg. \$16

\$13.65

**Bar Soap**

Moisturizes as it gently cleanses, leaving skin lightly fragranced.

Each, 3.17 oz. net wt.

Black Suede 495-565

Wild Country 495-570

reg. \$6

\$3.99 each



signs of fall

From a brisk breeze
to the soft touch of
satin, colorful leaves
to blooming burgundy
prints...autumn has
arrived in style.

Model is wearing
Western Bootie,
sold on page 121.

A

A. ♦ Satin Printed Dress
Multicolored floral printed dress with V-neck, button detail down front and slit on center front hem, smocked waistband, $\frac{3}{4}$ sleeves with elastic cuff and zipper on center back. Lined. Polyester/spandex/polyester lining. Center back length: 50 $\frac{3}{4}$ " on M; 52" on 1X. Machine wash, line dry. Imported.
XS(0-2) **439-146**
S(4-6) **439-150**
M(8-10) **439-170**
L(12-14) **439-199**
XL(16) **439-203**
1X(18W-20W) **439-218**
2X(22W-24W) **439-222**
3X(26W-28W) **439-237**
reg. \$56.99
\$44.99

B

2-PACK



B. ♦ 2-Pack Cutout Tops
Includes solid fuchsia and brown long-sleeve tops with cutout detail on chest and right shoulder. Polyester/spandex. Center back length: 25" on M; 27" on 1X. Machine wash, dry flat. Imported.
XS(0-2) **439-241** XL(16) **439-309**
S(4-6) **439-256** 1X(18W-20W) **439-442**
M(8-10) **439-280** 2X(22W-24W) **439-457**
L(12-14) **439-294** 3X(26W-28W) **439-715**
reg. \$56.99
\$44.99 pack of 2



C. ♦ Faux-Leather Blazer
Black blazer with peak lapel and one-button closure on front, long sleeves with button detail, slit pockets and back vent. Lined. Polyester/spandex with polyurethane coating/polyester lining. Center back length: 28" on all sizes. Dry clean only. Imported.
XS(0-2) **445-960** XL(16) **448-477**
S(4-6) **448-386** 1X(18W-20W) **448-921**
M(8-10) **448-405** 2X(22W-24W) **449-000**
L(12-14) **448-462** 3X(26W-28W) **449-014**
reg. \$74.99
\$59.99

D. ♦ Slim Faux-Suede Pant
Black slim-fitting faux-suede pants with elastic waist. Polyester/spandex. Inseam: 28 $\frac{1}{2}$ " on all sizes. Hand wash, line dry. Imported.
XS(0-2) **450-048** XL(16) **451-450**
S(4-6) **450-330** 1X(18W-20W) **451-685**
M(8-10) **451-360** 2X(22W-24W) **451-833**
L(12-14) **451-446** 3X(26W-28W) **451-852**
reg. \$49.99
\$39.99

C



Model is wearing
Chain Loafer with
Charms, sold on
page 121.

a love-to-live-in layer

❖ Open-Front Plaid Cardigan

Blue plaid long cardigan with open front and $\frac{3}{4}$ sleeves. Polyester/spandex. Center back length: 37" on M; 39" on 1X. Machine wash, line dry. Imported.

XS(0-2) **452-476**
S(4-6) **452-720**
M(8-10) **453-013**
L(12-14) **453-028**
XL(16) **453-051**
1X(18W-20W) **453-324**
2X(22W-24W) **453-362**
3X(26W-28W) **453-506**
reg. \$56.99
\$44.99

Model is wearing Slim Faux-Suede Pant, sold on page 117, and Crewneck Tee in Burgundy, sold on page 121.

APPAREL SIZE CHART			
SIZE	BUST	WAIST	HIP
XS 0/2	30.5"-32"	23.5"-25"	32.5"-34"
S 4/6	33.5"-35"	26.5"-28"	35.5"-37"
M 8/10	36.5"-38"	29.5"-31"	38.5"-40"
L 12/14	39.5"-41"	32.5"-34"	41.5"-43"
XL 16	43"-44"	35.5"-36.5"	44.5"-45.5"
1X 18W/20W	46.5"-48.5"	39"-41"	48"-50"
2X 22W/24W	50.5"-52.5"	43"-45"	52"-54"
3X 26W/28W	54.5"-56.5"	47"-49"	56"-58"

A fit so easy, for when it's breezy

FASHION



A. ❖ Button-Front Top

Grey button-front top with functional button placket, chest pockets and long sleeves with tab detail. Polyester/rayon/spandex. Center back length: 26" on M; 28" on 1X. Machine wash, dry flat. Imported.

XS(0-2) **451-867** XL(16) **452-280**
S(4-6) **452-040** 1X(18W-20W) **452-404**
M(8-10) **452-218** 2X(22W-24W) **452-438**
L(12-14) **452-275** 3X(26W-28W) **452-457**
reg. \$46.99
\$36.99

B. ❖ Lace Appliqué Blouse

Blue high-crewneck blouse with cutout lace appliqué, button closure on back neck and long cuffed bubble sleeves. Viscose/spandex. Center back length: 25" on M; 26 $\frac{1}{2}$ " on 1X. Machine wash, dry flat. Imported.

XS(0-2) **439-055** XL(16) **439-108**
S(4-6) **439-060** 1X(18W-20W) **439-112**
M(8-10) **439-089** 2X(22W-24W) **439-127**
L(12-14) **439-093** 3X(26W-28W) **439-131**
reg. \$58.99
\$46.99

C. ❖ Satin Smocked Blouse

Floral-printed burgundy blouse with split V-neck, small ruffles and tie detail on neckline. Smocking at shoulders and long sleeves with elastic cuffs. Polyester/spandex. Center back length: 25 $\frac{1}{2}$ " on M; 27" on 1X. Machine wash, line dry. Imported.

XS(0-2) **439-720** XL(16) **444-175**
S(4-6) **442-995** 1X(18W-20W) **444-213**
M(8-10) **443-953** 2X(22W-24W) **444-505**
L(12-14) **444-046** 3X(26W-28W) **445-899**
reg. \$49.99
\$39.99



Enjoy special prices and offers with an Avon account or Representative.

C21 | 119

the season's signature shade

❖ **2-Piece Wide-Leg Pant Set**
Burgundy set includes long-sleeve collared top with contrasting satin button placket and pocket, wide-leg pants with elastic waistband, side seam pockets and satin trim down seams. Body: polyester/spandex. Contrast trim: polyester/spandex. Center back length: 25" on M; 27" on 1X. Inseam: 25" on all sizes. Machine wash, line dry. Imported.

XS(0-2) **455-714**
S(4-6) **455-729**
M(8-10) **455-733**
L(12-14) **455-748**
XL(16) **455-767**
1X(18W-20W) **455-862**
2X(22W-24W) **455-953**
3X(26W-28W) **455-968**
reg. \$69.99
\$54.99 2-piece set

Model is wearing
Metallic Slide Sneaker
sold on page 121.

2-PIECE
SET

satin
collar

satin
pocket

satin
trim

Color-changing leaves...and tees



New and
Improved fit!
Now with
crew neck
and slight
curved
hem.

4-PACK

❖ **4-Pack Crewneck Tees**
Includes solid burgundy, fuchsia and grey and printed blue tees with crew neck and slight curved hemline. Cotton/polyester. Center back length: 25" on M; 27" on 1X. Machine wash, dry flat. Imported.

XS(0-2) **453-946** XL(16) **455-642**
S(4-6) **455-547** 1X(18W-20W) **455-657**
M(8-10) **455-585** 2X(22W-24W) **455-661**
L(12-14) **455-638** 3X(26W-28W) **455-695**
reg. \$49.99
\$39.99 pack of 4

❖ **Western Bootie***
Faux suede Western-style booties with 2 3/4" block heel and elastic gore on sides for easy on/off. Man-made materials. Half sizes, order size up.

6M **457-190** 7M **457-281**
8M **457-296** 9M **457-300**
10M **457-501** 11M **457-540**
reg. \$64.99
\$49.99

❖ **Chain Loafer With Charms***
Black loafers with 1 1/4" block heel, chain and charm detail on upper and wavy cushion insole. Man-made materials. Half sizes, order size up.

reg. \$46.99
\$36.99

6M **456-008**
7M **456-543**
8M **456-581**
9M **456-668**
10M **456-816**
11M **456-835**

❖ **Metallic Slide Sneaker***
Slip-on sneaker slides with 1 1/4" platform, elastic gore on upper for easy on/off and cushion insole. Man-made materials. Half sizes, order size up.

6M **456-854**
7M **456-869**
8M **456-911**
9M **456-926**
10M **457-004**
11M **457-042**
reg. \$42.99
\$32.99

*Imported.

Enjoy special prices and offers with an Avon account or Representative.



Shown:
Toffee.

WHITE
NATURAL
BEIGE
TOFFEE
ZEN
BLUE
SAILOR
BLUE
BLACK

❖ **Playtex® 18 Hour® Original Comfort Strap® Wirefree Bra (4693)**

Back closure. Natural latex rubber/polyester/nylon/cotton. Hand wash, line dry. Imported.
White, Natural Beige or Toffee: 36-48B,C; 34-48D,DD; 38-48DDD. **Zen Blue:** 36-42B; 36-44C,D; 38-46DD,DDD. **Sailor Blue:** 36-44C,D; 38-46DD; 44-46DDD. **Black:** 36-48B; 36-54C; 36-50D, 54D; 38-54DD. **reg. \$39**
\$33.99



Shown:
Evening
Nude.

WHITE
NUDE
EVENING
BLUSH
BLACK

❖ **Playtex® Perfectly Smooth® Wirefree Bra (US4707)**

Back closure. Lightly lined. Nylon/spandex, polyester lining. Hand wash, line dry. Imported.
White, Nude, Black: 36-42B; 36-44C,D,DD; 36-42DDD. **Evening Blush:** 36-44C,D,DD. **reg. \$46**
\$37.99



Shown:
Taupe.

WHITE
PINK
PIROUETTE
TAUPE
EVENING
BLUSH
BLACK

❖ **Playtex® Front Close® No Poke Dreamwire™ Bra (US4423)**

No pinching. No poking. Just smooth support with wicking Cool Comfort® fabric. Front closure. Nylon/spandex/polyester. Hand wash, line dry. Imported. Sizes: 38-48C,D,DD,DDD (all colors). **reg. \$46**
\$36.99



Shown:
Sandshell.

WHITE
SAND-SHELL
NIGHT-FIRE
RED
BLACK

❖ **Playtex® Ultra Soft No Poke Dreamwire™ Bra (US4833)**

No pinching. No poking. Soft lace with satin neckline and underarm. 4-Way TruSUPPORT® design. Convertible, adjustable straps. Back closure. Lightly lined. Nylon/spandex. Hand wash, line dry. Imported. Sizes: 38-42B,C,D,DD,DDD; 44C,D,DD,DDD; 46D,DD (all colors). **reg. \$46**
\$36.99

COOL & CONFIDENT

NEW

❖ **Bali® One Smooth U® Lace Minimizer Underwire Bra (DF3386)**

Minimizes up to 1½". Lightweight, breathable lace with sheer inserts. Full coverage. Power mesh provides extra cup support, opacity, back and side smoothing. Adjustable, convertible straps. Hand wash, line dry. Imported. Nylon/spandex. **White, Evening Blush or Black:** 34-42C,D,DD,DDD. **Nightfire Red:** 36-40C,D,DD. **reg. \$49**
\$39.99

WHITE
SAND-SHELL
NIGHT-FIRE
RED
BLACK



Shown: Sandshell.



Shown:
Almond.

WHITE
ALMOND
EVENING
BLUSH
BLACK/ALMOND

❖ **Bali® Comfort Revolution® Soft Touch™ T-Shirt Underwire Bra (DF3468)**

Full-coverage. With soft microstretch fabric and flexible foam cups. Cooling and moisture-wicking. Adjustable, convertible straps, back support with back and side smoothing. Hook-and-eye back closure. Nylon/spandex. Hand wash, line dry. Imported. Sizes: 36-40B; 34-42C,D,DD (all colors). **reg. \$48**
\$38.99



Shown:
Almond.

WHITE
ANIMAL
PRINT
ALMOND
BLACK

❖ **Bali® Comfort Revolution® Soft Touch Ultimate® Wirefree Bra (DF3462)**

A wirefree bra that shapes and supports with soft-touch fabric. Cooling and moisture-wicking. Adjustable, convertible straps, back support with back and side smoothing. Hook-and-eye back closure. Nylon/spandex. Hand wash, line dry. Imported. Sizes: S,M,L,XL,2XL,3XL (all colors). **reg. \$48**
\$38.99

Playtex® is a registered trademark used under license.

clean up crew

SAFELY REMOVE TOUGH STAINS



❖ **Homestar Cook Top & Stainless Steel Cleaning Wipes**
Plant-based surfactants to lift and remove leftover residue and spills from glass cooktops and stainless steel. 50 wipes, each, 10 1/2" x 9 1/2".
149-995
reg. \$9.99
\$7.99

❖ **Homestar Rangehood & Kitchen Degreaser**
Super-strength formula with a double-solvent solution blend for hard-to-remove grease. External oven use only.
16.2 fl. oz.
918-150
reg. \$13.99
\$10.99

❖ **Homestar Cook Top Cleaner & Polish**
Cleans, polishes and protects smooth cooktop ranges for a scratch-free shine. Plant-based formula. Fresh green herbal scent. 7.7 fl. oz.
593-059
reg. \$12.99
\$9.99

HOMESTAR

❖ **Homestar Multi Purpose Cleaner**
Bleach-free. With citric acid, orange oil and baking soda. Natural citrus scent.
16.9 fl. oz.
307-507
reg. \$9.99
\$7.99

❖ **Refill**
Spray nozzle not included.
30.4 fl. oz.
700-964
reg. \$11.99
\$8.99



❖ **Homestar Floor Cleaner**
Nozzle provides targeted application to apply directly to floor. Dries quickly for a streak-free shine. Great for laminate, sealed hardwood and sealed stone. Fresh lavender scent. 25.3 fl. oz.
149-980
reg. \$9.99
\$7.99



❖ **Homestar Bathroom Cleaner**
Just spray, let sit and wipe away! Fights tough soap scum, limescale, calcium and grime. Fresh green apple scent. 25.4 fl. oz.
092-635
reg. \$11.99
\$8.99



❖ **Homestar Foaming Toilet Bowl Cleaner**
Fights toilet rings and stains. Includes five pouches. 10.6 oz. total net wt.
090-298
reg. \$12.99
\$9.99



❖ **Homestar Odor Eliminator for Fridge**
No-spill solid gel formula neutralizes fridge odors. Lasts up to 3 months.
14.8 oz. net wt.
793-165
reg. \$7.99
\$5.99



fresh zone

❖ **Fresh Fiji Sheet Detergent**
Laundry detergent in a single sheet! Seven-enzyme stain-removing blend. 30 easy-dissolving detergent sheets. Each sheet, 9" x 8".
Lavender
406-092
Fresh
184-203
reg. \$22.99
\$16.99 each



❖ **Fresh Fiji Hygienic Power Laundry Detergent**
With Hygienic Power formula to remove dirt you can't see, a stain-fighting solution to brighten and whiten and baking soda to help prevent odors. 25 loads. 33.8 fl. oz. **700-137**
reg. \$8.99
\$6.99



❖ **Fresh Fiji Hygienic Power Fabric Softener**
3x concentrated. Softens, freshens and protects clothes. Long-lasting rosewater and jasmine scent. Made with plant-based surfactants. Microplastic-free. Safe for skin and environment. 50 loads. 33.8 fl. oz. **792-355**
reg. \$7.99
\$5.99



FRESH FIJI

❖ **Fresh Fiji Fabric Refresher with Wrinkle Release**
Freshens fabrics and smooths wrinkles. Clean laundry scent. 16.9 fl. oz. **322-988**
reg. \$11.99
\$8.99



❖ **Fresh Fiji Gel Beads Deodorizer**
Neutralizes odors for up to 70 days. Plastic. 5.29 oz. net wt. **Fresh Cotton**
930-188
Calming Lavender
918-313
reg. \$11.99
\$8.99 each



❖ **Fresh Fiji Shoe Deodorizer**
Eliminates tough odors on contact with the power of baking soda and persimmon. Great for all kinds of shoes, from leather to cotton. 10.1 fl. oz. **322-256**
reg. \$9.99
\$7.99



❖ **Fresh Fiji Car Air Freshener**
Clips onto car vents and allows you to control the fragrance intensity. Freshens for up to 50 days. 17 fl. oz. 2 1/4" diam. x 1 1/4" D with 2" L clip. Plastic. Imported. **Orange Blossom**
721-472
White Cotton
721-597
reg. \$7.99
\$5.99 each



NO STRONG OR HARSH
SYNTHETIC, CHEMICAL FUMES.



❖ **Fresh Fiji Hinoki Room Spray**
A fine mist to freshen and deodorize every room with the light forest scent of hinoki wood. With natural essential oils. 13.5 fl. oz. **508-309**
reg. \$11.99
\$8.99

❖ **Fresh Fiji Lavender Pillow Spray**
A fine mist for pillowcases, linens and bedding with the calming scent of lavender to help promote relaxation of body and mind. With natural essential oils. 13.5 fl. oz. **508-859**
reg. \$11.99
\$8.99

Safe for most machine-washable fabrics. Dermatologist-tested. Let dry before skin contact. Use in a well-ventilated area. Not for use on skin or pets. Keep out of reach of children.



**Botanical
Essence Bath Oil**
With nourishing
botanical extracts.
Uplifting herbal
scent. 16.2 fl. oz.
027-253
reg. \$31
\$24.99

Original Bath Oil
Hydrates during
or after bath
or shower.
16.9 fl. oz.
439-040
reg. \$24
\$16.99



**Bonus-Size
Original
Shower Gel**
Gently
cleanses
and hydrates.
33.8 fl. oz.
170-731
reg. \$18
\$13.99



**Original
Shower Gel**
Gently cleanses
and hydrates.
5 fl. oz.
933-005
reg. \$8
\$5.19



**Original
Body Lotion**
48 hours of
moisture.
11.8 fl. oz.
935-338
reg. \$11
\$7.69



**Gelled
Body Oil**
Dries to a silky finish.
6.76 fl. oz. **930-575**
reg. \$13
\$8.69

Bath Oil Spray
Locks in hydration.
5 fl. oz. **194-325** reg. \$14
\$9.29

Bonus-Size Bath Oil
Keeps skin hydrated after
bath or shower. 25 fl. oz.
941-253 reg. \$30
\$21.69

**Bonus-Size
Original
Body Lotion**
33.8 fl. oz.
941-545
reg. \$20
\$13.99



**Original
Replenishing
Hand Cream**
24+ hours of
moisturization.
3.4 fl. oz.
941-268
reg. \$5
\$2.69



**Original
Beauty Bar Soap**
Skin-nourishing bar soap.
Creamy lather. Suitable
for daily use on face,
body and hands.
3.17 oz. net wt. **543-110**
reg. \$4.50
\$3.49





Bonus-Size Soft & Sensual Shower Gel
33.8 fl. oz.
171-848
reg. \$18
\$13.99

Soft & Sensual Body Lotion
11.8 fl. oz.
934-312
reg. \$11
\$7.69

Soft & Sensual Replenishing Hand Cream
3.4 fl. oz.
867-315
reg. \$5
\$2.69

Bonus-Size Soft & Sensual Body Lotion
33.8 fl. oz.
336-062
reg. \$20
\$13.99

Bonus-Size Soft & Sensual Bath Oil
25 fl. oz.
941-110
reg. \$30
\$21.69



Soft & Sensual Shower Gel
5 fl. oz.
435-600
reg. \$8
\$5.19



Soft & Sensual Bath Oil
16.9 fl. oz.
504-614
reg. \$24
\$16.99



Soft & Sensual Beauty Bar Soap
3.17 oz. net wt. 543-215
reg. \$4.50
\$3.49



Soft & Sensual Gelled Body Oil
6.76 fl. oz.
908-244
reg. \$13
\$8.69



Soft & Sensual Antiperspirant Deodorant Roll-On
2.6 fl. oz.
714-861
reg. \$3.60
\$2.69



Radiant Moisture Shower Gel
Gently cleanses and hydrates.
5 fl. oz.
435-777
reg. \$8
\$5.19



Radiant Moisture Replenishing Hand Cream
3.4 fl. oz.
941-272
reg. \$5
\$2.69




Radiant Moisture Bonus-Size Bath Oil
Keeps skin hydrated after bath or shower.
25 fl. oz.
249-788
reg. \$30
\$21.69



Radiant Moisture Bonus-Size Shower Gel
33.8 fl. oz.
171-867
reg. \$18
\$13.99



Radiant Moisture Bonus-Size Body Lotion
33.8 fl. oz.
942-317
reg. \$20
\$13.99



Comforting Shea Bath Oil
16.9 fl. oz.
015-071
reg. \$24
\$16.99



Supreme Nourishment Bonus-Size Body Lotion
33.8 fl. oz.
945-612
reg. \$20
\$13.99



Supreme Nourishment Enriching Coconut Oil Collection
The lasting nourishment of coconut oil.



Body Soufflé
6.7 fl. oz.
479-346
reg. \$16
\$10.49

Lip Balm
Coconut flavor.
.14 oz. net wt.
958-370 reg. \$2
\$1.39

Oil Wash
11.8 fl. oz.
366-380
reg. \$15
\$9.99



LET'S
CLEAR
SOME
THINGS
UP



developed for
all skin types with
gently exfoliating
salicylic acid

Skin So Soft for Acne-Prone Skin

FOR FACE

A. Soothing Spot Gel
Skin looks radiant, even-toned. With rosemary, madecassoside and mint extracts. Leave on, dries clear. .5 fl. oz.
072-721 reg. \$18 \$13.99

B. Foaming Cleanser
With plant-based scrub, rosemary, madecassoside and mint extracts. 5 fl. oz.
041-647 reg. \$17 \$12.99

FOR BODY

C. Soothing Gel
Helps visibly improve tone and texture. Cooling sensation. With glycerin, allantoin and panthenol. Leave on, dries clear. 6.1 fl. oz. **040-636 reg. \$20 \$15.99**

D. Exfoliating Body Wash
Nondrying, nonirritating. With rosemary oil. 10.1 fl. oz. **041-556 reg. \$20 \$15.99**

E. Gentle Body Wash
Nondrying, nonirritating. With rosemary oil. 10.1 fl. oz. **039-325 reg. \$20 \$15.99**

F. Body Pads
Pre-soaked exfoliating cotton pads. Helps even tone. With hyaluronic acid and panthenol. 70 pads. **039-330 reg. \$30 \$24.99**

Suitable for daily use and free of synthetic fragrances.

❖ **A. Candle**
1 wick. Soy-wax blend. 3" diam. 3 1/2" H. Burn time, 40 hours. 7 oz. net wt. **504-686** reg. \$23 **\$18.99**

Place candle on trivet or holder before lighting to protect furniture. Never leave burning candles unattended. Keep away from children and pets.

B. Room Spray
Instantly refresh your home. 3.25 fl. oz. **361-851** reg. \$13 **\$10.99**

C. Air Diffuser
Six diffuser reeds. Fragrance oil, 2.37 fl. oz. **504-724** reg. \$30 **\$24.99**

D. Bath Salts
Pour a handful under warm running water. With sea salt, glycerin and sunflower seed oil. Use 1-3 times a week. 12.5 oz. net wt. **504-557** reg. \$23 **\$18.99**

E. Shower Steamers
Place one on shower shelf and activate with shower steam (avoid heavy stream of water). Each, 1 oz. net wt. **504-428** reg. \$26 **\$20.99** six shower steamers

AVON SENSES GRATITUDE LAVENDER & CEDARWOOD
Fill your space with the calming and soothing scents of lavender and cedarwood.



A. Body Mist
With aloe vera extract, refreshes and leaves skin feeling soothed. 8 fl. oz. **034-888** reg. \$18 **\$14.99**

B. Shower Gel
Moisturizing cleanser derived from coconut. 10 fl. oz. **035-190** reg. \$17 **\$13.99**

C. Body Lotion
Smooths and softens with moisture-rich shea butter and vitamin E. 8 fl. oz. **035-152** reg. \$17 **\$13.99**

D. Hand Soap
With moisturizing glycerin, leaves hands feeling clean and soft. 10.1 fl. oz. **852-081** reg. \$13.99 **\$10.99**

E. Hand Cream
With shea butter and antioxidants, leaves dry hands feeling buttery smooth. 2.5 fl. oz. **015-029** reg. \$6 **\$4.99**

F. Body Scrub
Remove dry, dead skin while shea butter and olive and avocado oils help moisturize. 9 oz. net wt. **530-314** reg. \$22 **\$17.99**

COZY VANILLA & COCONUT

Envelop yourself in a cozy cloud of comforting vanilla, creamy coconut and calming chamomile.

Free from parabens, mineral oil, silicone, phthalates and dyes.



SENSES Fresh Bergamot / Sparkling Grapefruit



FRESH BERGAMOT & WILD MINT
A fresh bouquet of dewy flowers mixed with spicy bergamot, clean wild mint and luminous solar musk.

Free from parabens, mineral oil, silicone, phthalates and dyes.

Hand Cream
With shea butter and antioxidants.
2.5 fl. oz. **852-498** reg. \$6
\$4.99

Hand Soap
With moisturizing glycerin.
10.1 fl. oz. **852-297** reg. \$13.99
\$10.99

Shower Gel
Coconut-derived cleanser.
10 fl. oz. **034-873**
reg. \$17
\$13.99



SPARKLING GRAPEFRUIT & ORANGE BLOSSOM
A juicy mix of zesty grapefruit, bright orange blossom, delicate honeysuckle and luscious peach.

Hand Cream
With shea butter and antioxidants.
2.5 fl. oz. **852-120** reg. \$6
\$4.99

Hand Soap
With moisturizing glycerin.
10.1 fl. oz. **852-115** reg. \$13.99
\$10.99

Body Mist
With refreshing aloe vera extract.
8 fl. oz. **034-687**
reg. \$18
\$14.99



SENSES Bubble Bath / Shower Gel



Cherry Blossom Bubble Bath
Flirty and sweet.
24 fl. oz.
425-033
reg. \$11
\$8.99



Vanilla Cream Bubble Bath
Rich and creamy.
24 fl. oz.
214-220
reg. \$11
\$8.99



Cucumber Melon Bubble Bath
Fresh and sweet.
24 fl. oz.
688-950
reg. \$11
\$8.99



Orange & Honeysuckle Bubble Bath
Fresh and sunny.
24 fl. oz.
047-808
reg. \$11
\$8.99



Endless Ocean Bubble Bath
Marine and breezy.
24 fl. oz.
425-048
reg. \$11
\$8.99



Lily & Honeysuckle Blossom Bubble Bath
Fragrant and refreshing.
24 fl. oz.
423-394
reg. \$11
\$8.99



Soft Pink Bubble Bath
Lilac and rose.
24 fl. oz.
425-052
reg. \$11
\$8.99



Sensitive Skin Bubble Bath
Chamomile scent. 24 fl. oz.
213-151
reg. \$11
\$8.99



Lavender Garden Bubble Bath
Soft and serene.
24 fl. oz.
424-735
reg. \$11
\$8.99



Blushing Cherry Blossom Hydrating Shower Gel
5 fl. oz.
423-299
reg. \$6
\$3.69



Silky Vanilla Hydrating Shower Gel
5 fl. oz.
462-105
reg. \$6
\$3.69



Fresh Cucumber & Melon Hydrating Shower Gel
5 fl. oz.
462-071
reg. \$6
\$3.69



Juicy Pomegranate & Mango Hydrating Shower Gel
5 fl. oz.
462-139
reg. \$6
\$3.69



Exfoliation Mitt
Helps remove dead skin, and keeps skin feeling soft and smooth. Microfiber jacquard, with nylon spandex cuff. **439-734 reg. \$11 \$8.99**



Body Massager
Helps stimulate circulation and relieve tension in muscles, especially in back and limbs. Fits into palm for easy control and flexibility with customizable pressure. **439-920 reg. \$11 \$8.99**

Smooth Moves Anti-Cellulite Massager
Use with gel to help firm and smooth skin. Rotating rollers help promote circulation and reduce the appearance of cellulite. Plug-in device. **011-296 reg. \$70 \$62.99**



Smooth Moves Anti-Cellulite Cooling Gel
L-carnitine and chai hu help target fat cells. 6.7 fl. oz. **722-722 reg. \$21 \$12.99**



Affirm Yourself Firming Body Cream
Caffeine complex helps skin look more toned. 6.7 fl. oz. **522-970 reg. \$21 \$12.99**



recharge

NEW

Avon Aromatherapy Body Lotion Bright Day Ahead
Charge your day with positive energy. With citrus and ginger fragrance oils to uplift your mood. 5.8 fl. oz. **584-670 reg. \$17 \$13.99**



relax

NEW

Avon Aromatherapy Body Lotion Sleep Tight Zzz
Unwind after a long day. With rose and lavender fragrance oils to help promote a restful sleep. 5.8 fl. oz. **584-866 reg. \$17 \$13.99**



refresh

NEW

Avon Aromatherapy Body Lotion Bye-Bye Stress
Take a moment to de-stress. With refreshing spearmint and eucalyptus fragrance oils for stress relief and mental clarity. 5.8 fl. oz. **584-684 reg. \$17 \$13.99**



Avon Aromatherapy Minding My Mood 4-in-1 Essential Oil Blends
Natural multipurpose fragrance oils.

Energize With lively mandarin and stimulating ylang-ylang.
Calm With comforting lavender and soothing star anise.

Each, 1.7 fl. oz.
606-376 reg. \$32 \$25.99 boxed set of 2



Veilment Lumière Sunless Tanning Serum

The more drops, the deeper the tan. Color-correcting technology visibly evens tone. Suitable for different skin tones. Antioxidant-rich with skin-nourishing hemp seed oil. Dermatologically tested, hypoallergenic and vegan. **Light/Medium 422-307 Medium/Dark 422-326**
Each, 1.01 fl. oz. **reg. \$24 \$19.99 each**



MOISTURE THERAPY

Moisture Therapy Calming Relief Hand Cream
With colloidal oatmeal. Relieves the itchiness associated with dry hands. 4.2 fl. oz. **786-349** reg. \$6 **\$2.69**



Moisture Therapy Intensive Healing & Repair Hand Cream
Relieves extremely dry, chapped hands. Fragrance-free. 4.2 fl. oz. **482-937** reg. \$6 **\$2.69**



Extra Strength Cream
24-hour moisturization. Fragrance-free. 5.3 oz. net wt. **772-972** reg. \$8 **\$5.39**



PHYSIOGEL HYPOALLERGENIC / MICROBIOME

Physiogel Daily Moisture Therapy Dermo-Cleanser for face
Soap-free facial cleanser for dry and sensitive skin. 5 fl. oz. **094-384** reg. \$24 **\$18.99**



Physiogel Daily Moisture Therapy Facial Cream*
For normal to dry sensitive skin. 5.1 fl. oz. **847-511** reg. \$42 **\$33.49**



*The National Eczema Association has awarded the Seal of Acceptance™ to Physiogel Hypoallergenic Daily Moisture Therapy Facial Cream.



Moisture Therapy Bonus-Size Body Lotions
Each, 33.8 fl. oz. reg. \$20 **\$14.99 each**

Intensive Healing & Repair Body Lotion
72-hour moisture for extra-dry skin. Fragrance-free. **611-644**

Daily Skin Defense Body Lotion
Helps restore moisture to everyday dry skin. **603-028**

Calming Relief Body Lotion
Soothes and relieves dry, itchy skin. Fragrance-free. **611-663**



Microbiome Balance + Soothe Body Lotion
Skin looks softer and healthier. 13.2 fl. oz. **438-082** reg. \$25 **\$20**

Microbiome Balance + Soothe Body Wash
Softens as it gently cleanses. 13.2 fl. oz. **438-078** reg. \$23 **\$18**

Avon Microbiome by REACH® Hygiene Deodorant Stick
Floral citrus scent. Aluminum-free. 24-hour odor protection. 2.65 oz. net wt. **524-528** reg. \$13 **\$10.99**





Veilment CBD Nourishing Body Cream (Tube)

Same formula as original, now in a convenient tube. Skin feels soft, smooth and nourished. Jasmine scent. No THC. 6.7 fl. oz. **254-229** reg. \$38 **\$33**



Veilment CBD Nourishing Body Cream

Skin feels soft, smooth and nourished. Jasmine scent. No THC. 5 fl. oz. **524-513** reg. \$33 **\$29.50**



Veilment Hemp Seed Oil Dry Body Oil
Light, easily absorbed. Helps deeply nourish and hydrate dry and irritated skin. Fragrance-free. Hypoallergenic. 5 fl. oz. **564-106** reg. \$35 **\$28**



Veilment CBD Soothing & Nourishing Body Cream
Concentrated formula. Visibly soothes and smooths. Geranium scent. No THC. 1.7 fl. oz. **524-509** reg. \$33 **\$29.50**



Introducing an innovative exfoliating body wash that cools and refreshes with an ultimate veil of moisture

NEW

Glacial Water Cooling Body Scrub & Cleanser
Fresh Canadian glacier water with gently exfoliating apricot seed, moisturizing ceramides, cooling menthol and a clean peppermint scent. 13.5 fl. oz. **735-399** reg. \$15 **\$13.69**



HIMALAYA PINK SALT
Mineral-rich. Calming sage scent.

Exfoliating Soap
Daily body scrub and cleansing bar, with Himalayan pink salt, walnut shell, apricot seed and cranberry powder. 5.3 oz. net wt. **260-440** reg. \$8 **\$6**

Body Scrub & Cleanser
Himalayan pink salt. 13.5 fl. oz. **708-252** reg. \$15 **\$13.69**



Dead Sea Salt Body Scrub & Cleanser
Israeli Dead Sea salt. Energizing citrus-ginger scent. 13.5 fl. oz. **707-988** reg. \$15 **\$13.69**



Black Rose Body Scrub & Cleanser
French rose oil and apricot-seed powder. Aromatic black rose scent. 13.5 fl. oz. **707-969** reg. \$15 **\$13.69**





- **protects against** mosquitoes, deer ticks, no-see-ums, sandflies, gnats and biting midges
- **repels deer ticks** that may carry and transmit Lyme disease
- **DEET-free/PABA-free**
- **water-resistant**
- **SPF 28 & SPF 30**

Expedition for all-in-one protection from sun+bugs

BUG GUARD PLUS IR3535® EXPEDITION

No need to wash off. Dermatologist-tested.

A. Aerosol Spray SPF 28

Repels mosquitoes for 8 hours, deer ticks for 12 hours. 4 oz. net wt. 521-370 reg. \$20 \$14.99

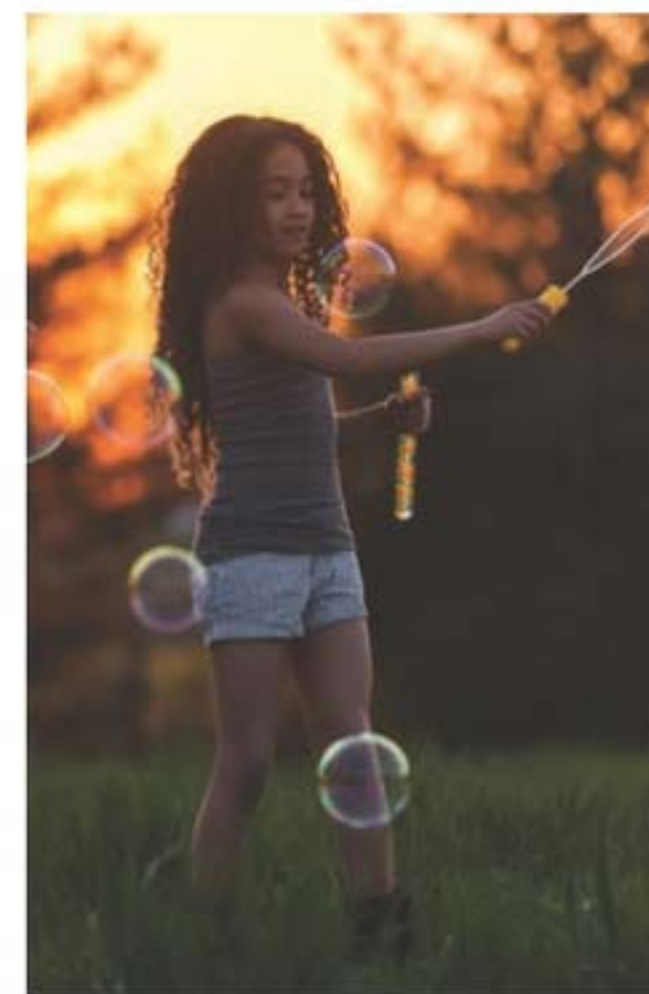
B. Family Size Pump Spray SPF 30

8 fl. oz. 255-259 reg. \$24 \$17.99

C. Pump Spray SPF 30

Repels mosquitoes for 8 hours, deer ticks for 10 hours. 4 fl. oz. 255-278 reg. \$15 \$9.99

Read and follow label directions and precautions.



- **protects against** mosquitoes, deer ticks, sandflies, no-see-ums, gnats, biting midges and black flies
- **repels deer ticks** that may carry and transmit Lyme disease
- **DEET-free/PABA-free**
- **With vitamin E & aloe**



Gentle Breeze protects against sun+bugs+water

- **SPF 30**
- **water-resistant**
- **DEET-free/PABA-free**
- **With vitamin E & aloe**
- **Repels mosquitoes** that may carry and transmit the Zika virus

BUG GUARD PLUS IR3535® GENTLE BREEZE SPF 30 LOTION

No need to wash off. Dermatologist-tested. 4 fl. oz. 925-819 reg. \$15 \$9.99



Anti-Itch Spray*

Provides temporary itch relief from insect bites. 2 fl. oz. 710-775 reg. \$11 \$7.69

*Does not repel insects.

Picaridin for when bugs are most active dawn+dusk



BUG GUARD PLUS PICARIDIN

A. Travel Size Pump Spray

2 fl. oz. 009-600 reg. \$12 \$8.99

B. Pump Spray

Repels mosquitoes for 8 hours, deer ticks for 12 hours. 4 fl. oz. 255-373 reg. \$15 \$9.99

C. Family Size Pump Spray

8 fl. oz. 255-187 reg. \$24 \$17.99

D. Towelettes

Repels mosquitoes for 8 hours, deer ticks for 12 hours. Resealable bag holds 8 packets. Each towelette, 9" L x 5 1/2" W. Each, .3 fl. oz. 269-562 reg. \$16 \$11.69 pack of 8

E. Aerosol Spray**

Repels mosquitoes for 6 hours, deer ticks for 7 hours. 4 oz. net wt. 315-243 reg. \$20 \$14.99

Read and follow label directions and precautions. **Aerosol Spray does not contain aloe.



Avon Shower Brush
Long handle to easily reach down back. Brush helps to remove dead skin cells as it cleanses. Back of brush features many massage nubs. Non-slip, comfort handle has a convenient hanging hold for easy storing and allows brush to dry quickly.
904-727 reg. \$10 \$7.99

Veilment Care Moisturizing Bar Soap
Derived from olive oil and infused with coconut oil.
2.8 oz. net wt.
380-864 reg. \$2.50 \$1.99



Moisture Therapy Intensive Healing & Repair Moisturizing Lip Treatment Balm
.14 oz. net wt.
285-117 reg. \$2 99¢



FMG Flavor Savers Lip Balm
Vanilla **209-501**
Melon **209-334**
Each, .14 oz. net wt.
reg. \$2 99¢ each



Veilment Care Lip Balm
Infused with naturally moisturizing jojoba oil and coconut oil to keep lips soft and supple all day. Delicately scented and tinted.
Cherry **604-168**
Strawberry **602-720**
Each, .14 oz. net wt.
reg. \$2 99¢ each



DEODORANTS

Roll-On Anti-Perspirant Deodorant
Each, 2.6 fl. oz. reg. \$3.60
\$2.69 each



Candid **656-095**
Far Away **836-226**
Haiku **836-264**
Imari **180-887**
Rare Gold **836-250**
Rare Pearls **836-245**
Night Magic Evening Musk **836-298**
Odyssey **836-317**
Sweet Honesty **941-579**
Timeless **941-583**



On Duty Unscented **926-820**
On Duty Sport **094-365**
On Duty Original **393-970**
Cool Confidence Original **926-777**
Cool Confidence Baby Powder **926-815**
Feelin' Fresh Original **925-546**



Black Suede **337-403**
Mesmerize **663-442**
Wild Country **941-602**

Perfumed Liquid Deodorant
Soft floral scent.
2 fl. oz.
687-681 reg. \$6 \$4.50



FOOT WORKS

**Overnight
Renewing
Cream**
3.4 fl. oz.
295-205
reg. \$9
\$5.99



**Deep
Moisturizing
Cream**
2.5 fl. oz.
308-962
reg. \$6
\$4.69



**Intensive
Moisture
Foot Cream**
Suitable for
diabetics.
2.5 fl. oz.
302-012
reg. \$6
\$4.99



**Deodorizing
Spray**
Can also be
used in footwear.
3.5 oz. net wt.
313-236
reg. \$10
\$7.99



**Maximum
Strength
Cracked
Heel Cream**
2.5 fl. oz.
310-404
reg. \$7
\$5.99



**Arthritis
Achy
Foot and
Muscle
Cream**
2.5 fl. oz.
314-194
reg. \$7
\$5.99



Pedicure Kit
Case, 3 1/2" L x 4 3/4" W.
Metal, man-made
materials. Includes: nail
clipper, toenail clipper,
nail file, scissors,
cuticle pusher. 121-029
reg. \$11
\$8.39



Pedicure Tool
4-in-1 tool! Plastic.
3 1/8" L x 1 3/4" W x 1 1/2" H.
Includes: fine-grain file,
metal file, pumice, brush.
592-712 reg. \$11
\$8.39



PERIOE HIMALAYA / MICROBIOME / EUTHYMOL

**Perioe Himalaya Pink Salt
Toothpaste Tube Ice Mint**
Pink gel paste with aloe vera
essence beads. Fluoride-free.
3.4 oz. net wt. 883-276 reg. \$6
\$5



Euthymol Toothpaste
Fluoride-free. Strong, unique flavor.
With ingredients to keep breath
fresh and help remove plaque.
Recyclable aluminum vintage tube.
3.7 oz. net wt. 295-406 reg. \$10
\$6.99



Perioe Microbiome Toothpaste
With fluoride, plus microbiome technology containing prebiotics
to help maintain a healthy oral care balance.

Whitening
Helps remove stains and
brighten smile while
fighting cavities. With
charcoal and lemon
extract. Cool Mint flavor.
4.1 oz. net wt. 543-287
reg. \$7
\$5.99



Total Care
Helps fight plaque and cavities,
and promotes fresh breath.
With charcoal and propolis
extract. Strong Mint flavor.
5.4 oz. net wt. 543-268
reg. \$6
\$4.99



REACH® & LISTERINE® FLOSS always remember to floss!

REACH® Unflavored Waxed Floss
Accepted by the American Dental Association. 55 yards.
239-317
reg. \$3
\$1.99



REACH® Mint Waxed Floss
The #1 selling floss from REACH®.
Refreshing mint flavor. Accepted by the American Dental Association. 55 yards.
239-302
reg. \$3
\$1.99



LISTERINE® Cool Mint™ Floss
Waxed coating is shred-resistant. Mint flavor for the feeling of clean, fresh breath. 55 yards.
239-355
reg. \$5
\$3.99



LISTERINE® Ultraclean® Mint Floss
With patented MICRO GROOVES® technology for greater plaque removal and superior cleaning. 30 yards.
239-321
reg. \$5
\$3.99



LISTERINE® Ultraclean® Access® Mint Flosser Refill
Disposable mint-flavored floss heads. For use with the **LISTERINE® Ultraclean® Access® Flosser**.
239-374
reg. \$7
\$5.64
pack of 28

LISTERINE® Ultraclean® Access® Unflavored Flosser Refill
Disposable unflavored floss heads. For use with the **LISTERINE® Ultraclean® Access® Flosser**.
239-393
reg. \$7
\$5.64
pack of 28



REACH® / PERIOE VIBE Dual Sonic Portable Electric Toothbrush

REACH® Interdental Brush
Angled 14°, like dental tools. Helps clean hard-to-reach spots, including back corners. Removes up to 30% more plaque compared to brushing alone! Customized for different spaces between teeth. Specially coated wire for gum protection. Ribbed edge for a better grip.
reg. \$5
\$3.99 each



WIDE
Pack of 10
630-164

TIGHT
Pack of 10
630-934

EXTRA TIGHT
Pack of 10
630-236

REACH® Professional Floss Picks
Acute angle (14°), like dental tools, for better reach. Sturdy pick easily fits between teeth. Dented handle for a better grip. Mint flavor.
Pack of 90.
630-179 reg. \$6
\$4.59
pack of 90



GOOD VIBES TO GO

Perioe Dual Sonic Portable Electric Toothbrush



MICRO AND GENERAL BRISTLES FOR EXCEPTIONAL CLEANING

TWO-MINUTE TIMER WITH 30-SECOND INTERVALS/AUTO OFF FUNCTION

LONG HANDLE COMFORT GRIP

HYGIENIC CAP FOR ON-THE-GO CONVENIENCE!

NEW

❖ **Perioe Dual Sonic Portable Electric Toothbrush**
Battery powered—great on the go! Adjustable dual mode (strong/gentle). Up to 27,000 vibrations per minute. Four replaceable brush heads. AAA alkaline replaceable battery included. **432-376**
reg. \$45
\$36.99
4 brush heads

NEW

❖ **Perioe Dual Sonic Portable Electric Toothbrush Refillable Heads**

Mix of four types of bristles targets different areas: molar, teeth surface, interdental, gum. Replace heads every three months. **433-430**
reg. \$12
\$9.99 includes 2 brush heads





100% grey coverage and rich, long-lasting color... without ammonia, parabens, mineral oil or benzophenone. For your most luxurious locks and healthy-looking hair. **No appointment necessary.**

Elastine Salon de Color
reg. \$9.99
\$7.99 each



BROWNS
Make faded Brown color vibrant!

4 / Dark Brown 038-568



4B / Dark Chocolate Brown 039-727



5B / Medium Maple Brown 041-723



5CB / Medium Chestnut Brown 040-110

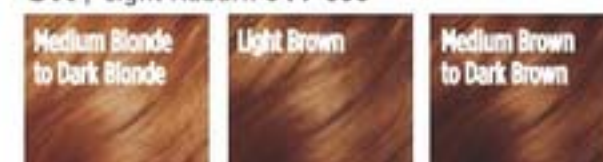


REDS & AUBURNS
Refresh, brighten or deepen color.

4R / Dark Mahogany Red 039-750



6R / Light Auburn 044-608



BLONDES
Lighten roots or completely color.

7BL / Natural Dark Blonde 047-827



10BL / Extra Light Natural Blonde 058-620



BLACKS
Make an impact for a dramatic look.

2 / Soft Black 038-553



Visibly **repair damaged hair**. Keep it looking **vivid** and **brass-free** with healthy shine.

Elastine Salon de Color Color Vibe
Nonirritating formula, suitable for any hair/scalp type.
Purple Shampoo **436-109**
Purple Conditioner **436-955**
Each, 8.4 fl. oz. reg. \$17
\$13.99 each



SIMULATION



Root Touch-Up
An instant way to cover up your roots and bare spots. Built-in mirror.
Each, .25 oz. net wt. reg. \$18
\$15.99 each



Reddish Brown
243-627

Light Brown
244-642

Dark Brown
245-213

Black
245-251

Advance Techniques 360 Nourish with Moroccan Argan Oil Leave-In Treatment
Moisturizes dry, damaged hair. Infuses it with instant shine and silky smoothness.
2 fl. oz. **511-411** reg. \$16
\$11.69



Advance Techniques Dry Ends Serum
Helps mend and nourish split ends instantly. With pro-vitamin B. Hair looks smooth and silky.
2 fl. oz. **883-261** reg. \$11
\$7.99



Advance Techniques Daily Shine 2-in-1 Shampoo & Conditioner
Leaves hair feeling clean, conditioned, and frizz-free. Suitable for daily use.
11.8 fl. oz. **803-230** reg. \$11
\$8.99



ELASTINE PROPOLITHERA**Volumizing**

Enhances texture so hair looks fuller, thicker, stronger. Each, 16.9 fl. oz.

A. Shampoo
892-607
B. Conditioner
892-870

Damage Repair

Helps hair appear smooth and manageable. Each, 16.9 fl. oz.

C. Shampoo
053-082
D. Conditioner
638-681

E. Hair Oil Serum

Helps to strengthen, protect, moisturize and smooth hair, and to add shine while styling. 5.7 fl. oz.

F. Hair Mask
Enriched with nutrients to help deeply nourish hair and mend damaged split ends. 10.1 fl. oz.

150-301
reg. \$18 each
\$15.99 each

**ELASTINE PROPOLITHERA BEE CURLY**

A patented technology* that helps care for curly hair to create silky, super-lustrous curls even after the first use.

Shampoo
16.9 fl. oz.
059-975
reg. \$29
\$23.99



Conditioner
16.9 fl. oz.
060-846
reg. \$29
\$23.99



Serum
5.7 fl. oz.
061-565
reg. \$29
\$23.99



*Shampoo and conditioner only.

Aloe Dual-Active Hair Serum

Intense hydration with vitamins, minerals and other nutrients to bring damaged or chemically processed hair back to life.

3.4 fl. oz.
102-585
reg. \$30
\$25

**Leave-In Conditioner**

Hydrates and nourishes dry hair, infusing it with rich luster.

8.1 fl. oz.
102-570
reg. \$19
\$15

**Serum Treatment**

Upon contact with water, nutrient-rich, moisturizing liquid visibly transforms into a creamy formula. 7.8 fl. oz.

359-821
reg. \$22
\$18

**Curl Cream**

Rich hydration for bouncy, defined curls. Reduces frizz for a smooth, healthy-looking shine. 5 fl. oz.

102-475
reg. \$19
\$15



Rejuvenating hair treatment for a lustrous-looking shine enriched with **GOLD-Polypeptide Protein Complex** to help repair and strengthen damaged hair and keep it looking silky smooth and voluminous.

NEW**Hair Deep Conditioning Treatment Cap**

Nourishing deep-conditioning treatment mask replenishes moisture in one cap application. With the bee goodness of propolis (tree sap and beeswax), honey and royal jelly for healthy-looking body and shine. Berry, rose and peony scent. Use as needed. Single-use cap. 1.4 oz. net wt.

053-761
reg. \$8
\$6.99



1 After shampooing, remove excess water. Cover all hair with cap.



2 Adjust cap to size of your head.



3 Lightly massage for even absorption of nutrients.



4 Remove cap after 10-15 minutes. Rinse thoroughly.



SPRING IS IN THE HAIR!

Shampoo and conditioner in one, with patented 2-in-1 technology, moisturizes hair while controlling odors so it looks and feels fresh and smooth, with a **fragranced formula** to give it a forever-springtime scent. Free of sulfates and parabens. Suitable for daily use.

Love Me

Jasmine and ylang-ylang. 8.4 fl. oz.
154-857 reg. \$16
\$12.99

Fresh Citrus

Lime, mandarin and basil. 8.4 fl. oz.
154-876 reg. \$16
\$12.99

Pure Breeze

White rose and Bulgarian rose. 8.4 fl. oz.
154-861 reg. \$16
\$12.99

STYLING BRUSH-UP

for all hair types

NEW

Avon Detangling Comb

Glides through wet or dry hair without tugging or pulling.
504-820
reg. \$5.99
\$4.99



NEW

Avon Blow-Dry Round Hairbrush

Smooth and straighten, or curl and wave. Easy, painless styling with comfort handle.
504-800
reg. \$17.99
\$14.99



NEW

Avon Detangling Hairbrush

Flexible bristles move through knots and tangles and minimize pain and split ends. 504-815
reg. \$12.99
\$9.99



NEW

Avon Compact Hairbrush

Pop it in your purse and go. Use on wet or dry hair. 504-743
reg. \$9.99
\$7.99



Elastine HempharmX

Shampoo and conditioner with cold-extracted hemp seed oil. Contains omega 3-6-9, known to help moisturize and nourish hair and prevent breakage with weightless hydration that delivers full volume. Vegan formulas. Both silicone-free. Shampoo is sulfate-free.

Hydrating Shampoo 359-836
Hydrating Conditioner 360-544
 Each, 13.5 fl. oz.
 reg. \$24
\$20 each



Elastine CBD & Hemp Seed Oil Cooling & Soothing Conditioner

Helps moisturize dry hair. Free from parabens and sulfates. No THC.

436-989
 11.8 fl. oz.
 reg. \$23
\$19



want volume?

Rosemary & Sea Salt

With rosemary to help promote thicker hair and scalp health, sea salt to add body.

Volumizing Shampoo 240-556

Volumizing Conditioner 246-831

Each, 6.7 fl. oz.

reg. \$4.50

\$3.79 each



Elastine Botanicals

Infused with revitalizing babassu seed oil, chamomile flower water and lemon chestnut extract, and pH balanced, like healthy hair, it helps bring damaged hair back to life, adding dewy moisture for a smooth, natural-looking sheen.

NO • Parabens • Silicone • Mineral oil • Triclocarban • Triclosan

Elastine Moisture Essentials

With richly moisturizing ceramide to help visibly strengthen strands, protect hair from wear and tear, and promote elasticity and shine.

ceramide + biotin

Helps dry, damaged hair look and feel fuller and healthier.

Shampoo 495-106

Conditioner 495-110

Each, 12.7 fl. oz. reg. \$9

\$6.99 each



ceramide + argan oil

Helps moisturize and reduce split ends, and keeps locks looking shiny and smooth.

Shampoo 495-125

Conditioner 495-130

Each, 12.7 fl. oz. reg. \$9

\$6.99 each



dry hair?

Cherry Blossom & Hyaluronic Acid

Moisturize dry, damaged hair with our hyaluronic acid-infused formula as thirsty strands drink it up.

Moisturizing Shampoo 239-943

Moisturizing Conditioner 240-059

Each, 6.7 fl. oz.

reg. \$4.50

\$3.79

each



frizzy hair?

Argan & Castor

With nourishing ingredients, helps protect hair from damage and breakage. Adds luster and smoothness.

Anti-Frizz Shampoo 150-866

Anti-Frizz Conditioner 150-904

Each, 6.7 fl. oz.

reg. \$5.39

\$4.49

each



CHI® ESSENTIALS / CHI® ESSENTIALS REVIVE KERATIN + BONDING

**CHI® Essentials
Replenishing Shampoo**
Gentle daily shampoo with essential vitamins, minerals and amino acids. No sulfates or parabens, so it won't strip hair of natural oils. Safe for color-treated hair. 12 fl. oz.
589-140
reg. \$20
\$16.99



**CHI® Essentials
Moisturizing Conditioner**
Lightweight daily conditioner. Infused with aloe to lock in rich moisture. With vitamins A and B to help strengthen hair from roots to ends, increase elasticity and help smooth split ends and frizz. 12 fl. oz.
589-409
reg. \$20
\$16.99



**CHI® Essentials
Repairing Serum**
Deeply penetrating-yet-lightweight serum helps strengthen, protect, moisturize and smooth. With vitamin A to help seal split ends, and rosemary to help boost volume and shine. 6 fl. oz. **589-413**
reg. \$33
\$27.59



**CHI® Essentials
Revive Keratin + Bonding
Restoring Shampoo**
Cleanses, moisturizes and protects against split ends and frizz. 12 fl. oz. **451-192**
reg. \$25
\$19.99

**CHI® Essentials
Revive Keratin + Bonding
Protecting Serum**
Apply to damp or dry hair for smoothness and shine, and as a hair shield from the sun. 3 fl. oz. **451-340**
reg. \$42
\$34.99

**CHI® Essentials
Revive Keratin + Bonding
Restoring Conditioner**
Helps restore dry, damaged and brittle hair. 12 fl. oz. **451-211**
reg. \$25
\$19.99



CHI® PRO STYLERS & TOOLS for salon-quality results

**CHI® ENVIRO 54®
Natural Hold Hair Spray**
For brushable hold. Lightweight. Fast-drying. No build-up. Anti-humidity. Thermal protectant for blow-drying. With silk to help build hair's strength and resilience, and natural botanicals to add volume and enhance shine. Paraben-free. 10 oz. net wt. **908-450**
reg. \$26.50
\$21.50



BioSilk® Silk Therapy®
Replenishes and reconstructs to help repair and protect all hair types. Tames frizz and flyaways and leaves hair silky smooth with reflective shine. Helps shield hair from UV rays, heat and humidity. 5.64 fl. oz.
011-349
reg. \$35
\$28.99



**CHI® 1" Volcanic Lava
Ceramic Pro Spin 'n' Curl**
Preset temperature controls with adjustable timers and LED screen display. For any hair type. 12" L. Dual voltage for travel. 11 ft. swivel cord. Use only as directed. **471-527**
reg. \$199
\$179



ATTACHMENTS
INCLUDED



**CHI® Advanced Ionic
Compact Hair Dryer**
Powerful 1875-watt ion generator emits negative ions to reduce drying time. Lightweight, compact design. Rapid Clean Technology with Blue LED light for cleaner air during styling. Adjustable heat and air-speed settings. Removable filter. 6 1/2 ft. cord. Use only as directed. **471-474** reg. \$150
\$135



Scalp Fortifying Serum Treatment
Moisturizes and helps support healthy hair roots and growth. 6.7 fl. oz. 782-271 reg. \$35 \$29



Scalp Fortifying Hair-Thickening Shampoo
With coconut oil, cleanses as it helps moisturize dry scalp and hair. 13.5 fl. oz. 778-014 reg. \$35 \$29



Premium Scalp Cleansing Brush
Helps promote cleansing of residue while massaging to reinvigorate health of scalp as it helps to stimulate circulation. 065-776 reg. \$19 \$16



KEEP SCALP AND HAIR FLAKE-FREE

Anti-Dandruff Scalp Care Shampoo
No silicones. 10.1 fl. oz. 451-412 reg. \$27 \$21.99

Anti-Dandruff Scalp Care 2-in-1 Shampoo and Conditioner
10.1 fl. oz. 451-431 reg. \$27 \$21.99



cover grey the natural way in 3 weeks

This hair-darkening shampoo and conditioner **darken grey hair gradually** while they **nourish your scalp and hair** with **hydrolyzed collagen** and **biotin**.

Dr. Groot Gradual Effect for Natural Brown Hair
Patented color-bonding technology, formulated with gentle, nonirritating ingredients derived from safflower and gardenia, known to visibly relieve hair-loss symptoms. Leaves hair with lasting natural color. For best results, use shampoo and conditioner together. Dermatologist-tested.

Shampoo
10.1 fl. oz. 740-432 reg. \$41 \$34

Conditioner
5.1 fl. oz. 740-447 reg. \$22 \$18



KEY BENEFITS

- lifts hair volume from roots
- with gentle ingredients derived from safflower and gardenia known to visibly relieve hair-loss symptoms
- nonirritating formula with no harmful chemicals
- darkens grey hair into a natural brown gradually in three weeks!*

BEFORE & AFTER



before



after 1 week use



after 2 weeks use

*Results may vary depending on how much grey hair you start with and the frequency of use.

HOW TO USE

1. Apply shampoo to wet hair and massage from roots to ends.
2. Leave for three minutes.
3. Rinse off until water gets clear.
4. Apply conditioner to wet hair.
5. Leave for three minutes.
6. Rinse off until water gets clear.

THE WOW DEAL

**5-PIECE SET
ONLY \$40**

OVER \$117 VALUE

749-918

REJUVENATE AND PAMPER
YOUR SKIN AND HAIR.

COLLECTION INCLUDES:

**Isa Knox LXNEW Ultimate
Rejuvenating Day Cream**
1.7 fl. oz.
\$50 value

**Isa Knox Anew Clinical
Revitalize & Reveal
Resurfacing Lotion for Body**
5 fl. oz.
\$34 value

**Rice Water Bright Gentle
Exfoliating Foaming Cleanser**
10.1 fl. oz.
\$15.99 value

**Elastine
Moisture Essentials
Moroccan Argan Oil
Shine Hair Oil Serum**
2.54 fl. oz.
\$9 value

**Elastine
Moisture Essentials
Ceramide & Argan Oil
Shine Shampoo**
12.7 fl. oz.
\$9 value



Enjoy special prices and offers with an Avon account or Representative.

© 2023 The Avon Company. All rights reserved.

CAMPAIGN 21, 2023

THE AVON COMPANY
165 BROADWAY, NY, NY 10006

To place an order, call:



Pk of 10 59340-9



Single 59339-9

Brochure effective until _____

Find me at www.avon.com/repstore/ _____



Not applicable in
Puerto Rico or
the Caribbean.



See our commitment at
www.avon.com/animal-welfare

RETURN POLICY If you are not satisfied, return any item within 45 days. View Avon's full 45-Day Return Policy at avon.com/shipping-returns.