

AWOON

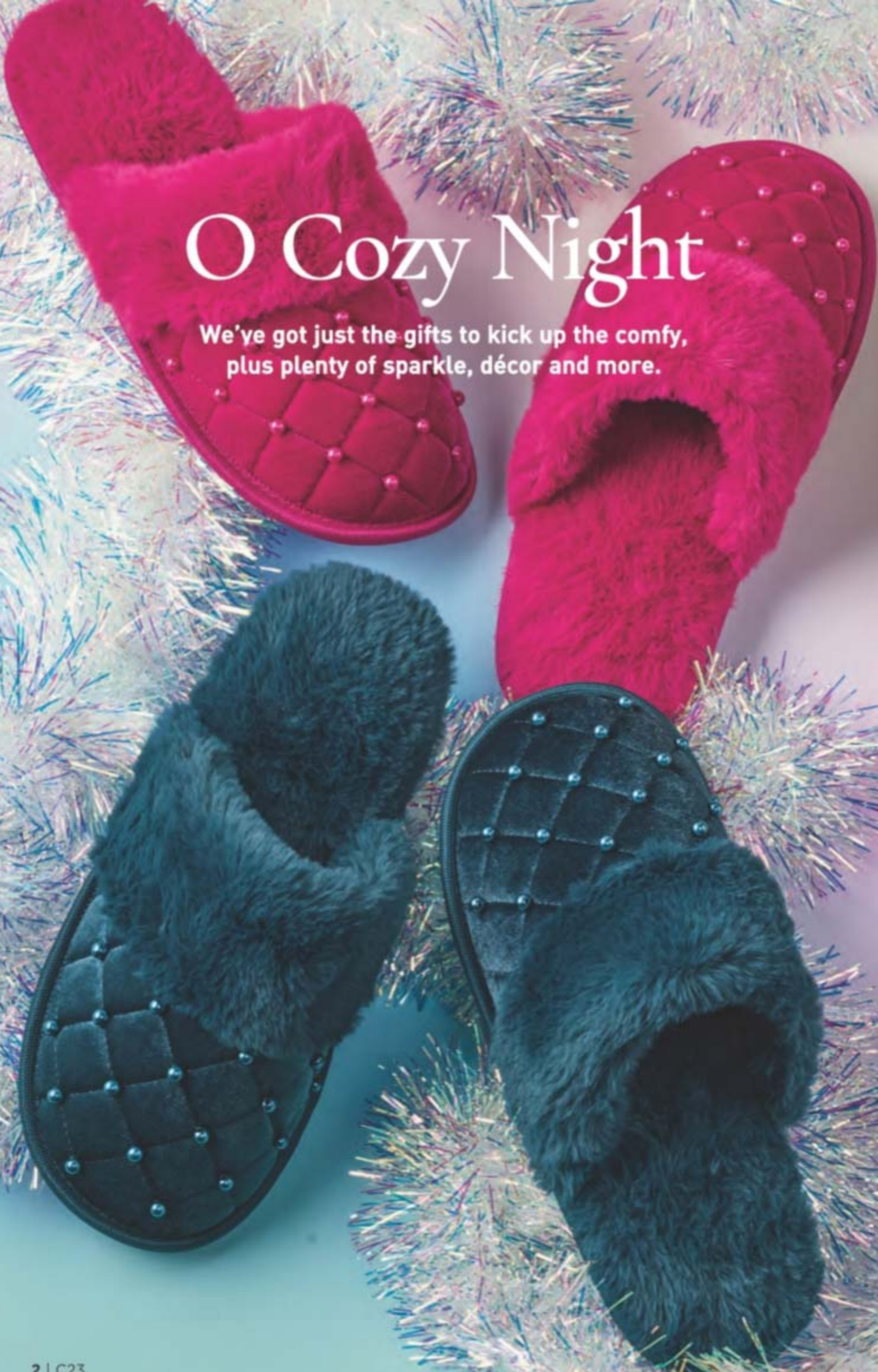
CAMPAIGN 23

*give the
Warm and
Fuzzies*



O Cozy Night

We've got just the gifts to kick up the comfy, plus plenty of sparkle, décor and more.



❖ **Pearl Slippers**
Quilted polyester velour upper with faux pearls and faux-fur collar, lining and footbed. Man-made materials. Imported. reg. \$22.99

\$16.99 each

Magenta
S(5-6) 197-730
M(7-8) 197-946
L(9-10) 197-965
XL(11-12) 198-172

Sapphire Blue
S(5-6) 197-530
M(7-8) 197-616
L(9-10) 197-669
XL(11-12) 197-673

Green
S(5-6) 196-916
M(7-8) 196-940
L(9-10) 197-200
XL(11-12) 197-472

Toasty Are We



◆ Plaid Slippers

Red plaid knit with ivory faux-shearling lining and footbed. Rubber outsole. Man-made materials. Imported.

S(5-6) 094-714 L(9-10) 095-653
M(7-8) 095-620 XL(11-12) 095-687
reg. \$22.99

\$16.99

◆ Scottie Slippers

Ivory faux shearling with holiday Scottie dog motif. Red faux-shearling lining and footbed. Rubber outsole. Man-made materials. Imported.

S(5-6) 095-691 L(9-10) 095-730
M(7-8) 095-706 XL(11-12) 096-148
reg. \$19.99

\$14.99

NEW! LIMITED EDITION

◆ **Plaid 2-Piece PJ**
Red plaid soft knit set. Top with notched collar, button-front placket and cuffed sleeves. Matching bottoms with elastic waistband. Polyester/spandex. Center back length: 25½" on M; 28" on 1X. Inseam: 29" on all sizes. Machine wash and dry. Imported.

XS(0-2) 096-650
S(4-6) 096-721
M(8-10) 097-068
L(12-14) 097-440
XL(16) 097-455
1X(18W-20W) 097-460
2X(22W-24W) 097-474
3X(26W-28W) 102-069
reg. \$49.99

\$39.99

◆ **Scottie Nightshirt**
Grey soft knit fabric with holiday Scottie dog print and front placket. Polyester/spandex. Center back length: 33½" on M; 35" on 1X. Machine wash and dry. Imported.

XS(0-2) 096-459
S(4-6) 096-478
M(8-10) 096-516
L(12-14) 096-554
XL(16) 096-569
1X(18W-20W) 096-607
2X(22W-24W) 096-626
3X(26W-28W) 096-645
reg. \$39.99

\$29.99

2-PIECE SET



NEW! LIMITED EDITION



Merry Moments

**Merry Moments
Glittering Watch**
Sparkling stone watch in silvertone with leatherlike strap. 9 1/4" L with 35mm diam. case. Water-resistant to 3 ATM.
Red 200-724
Blue 200-739
Green 200-762
reg. \$49.99
\$39.99 each



Glitter Glam Hoop Earrings
Goldtone teardrop hoops with glitter and silver-colored sparkle. Approx. 1" L. Pierced.
Red 200-959
Blue 200-853
Green 200-930
reg. \$12.99
\$9.99 each pair



**Shimmer and Shine
Pull-Cord Bracelet**
Three-row pull-cord stretch bracelet with colored glass faceted beads. One size fits most.
Red 200-820
Blue 200-796
Green 200-834
reg. \$16.99
\$12.99 each



Radiant Mother-of-Pearl Zodiac Necklace

Mother-of-pearl pendant with goldtone symbol and pavé stone accents on a goldtone chain. 16½" L with 3½" extender. reg. \$12.99

\$9.99 each



Capricorn
201-204



Aquarius
201-257



Pisces
201-276



Aries
201-300



Taurus
201-333



Gemini
201-348



Cancer
201-367



Leo
201-386



Virgo
201-405



Libra
201-458



Scorpio
201-534

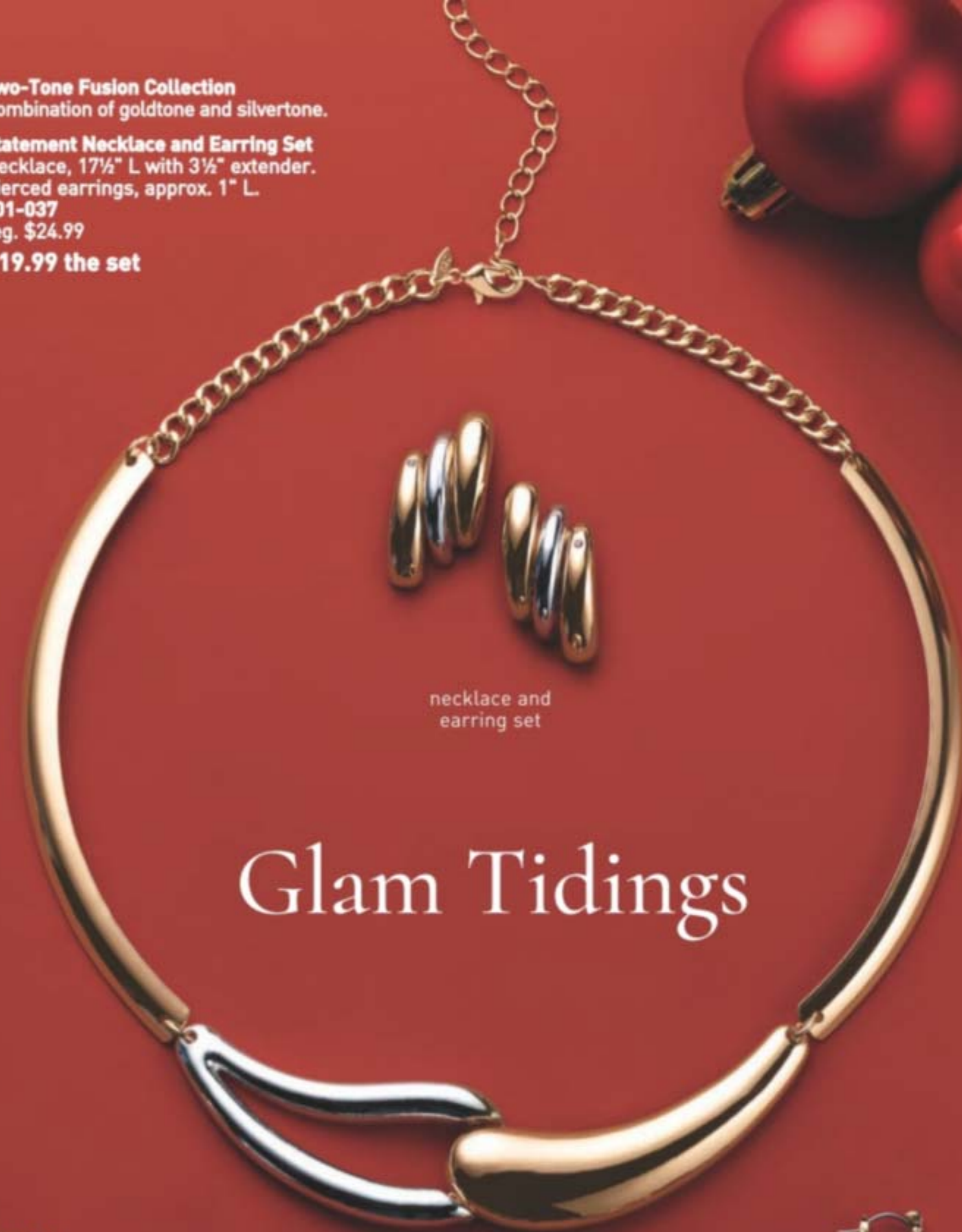


Sagittarius
201-610

Two-Tone Fusion Collection
Combination of goldtone and silvertone.

Statement Necklace and Earring Set
Necklace, 17½" L with 3½" extender.
Pierced earrings, approx. 1" L.
201-037
reg. \$24.99

\$19.99 the set



necklace and earring set

Glam Tidings

Ring Set

Set of two: one goldtone and one silvertone.

6 201-109

8 201-132

10 201-151

reg. \$12.99

\$9.99 the set

Earring Set

Set of three pairs: two goldtone and one silvertone. Approx. 1" L. Pierced.

201-170

reg. \$16.99

\$12.99 the set



set of 2

set of 3 pairs



Santa's Workshop Charm Collection
12 days of Christmas motif charms with glass faceted beads set in silvertone.

Necklace and Earring Set
Necklace, 17" L with 3 1/2" extender. Lobster closure. Charms, 3/4" L. Pierced drops, 3/4" L.
046-180
reg. \$22.99
\$16.99 the set

Bracelet
7 1/2" L with 1" extender. Lobster closure. Charms, 3/4" L.
046-266 reg. \$16.99
\$12.99



NEW! LIMITED EDITION

Jingle Ornament Charm Necklace
Shaky stone pendant with charms set in goldtone. 16 1/2" L with 3 1/2" extender. Lobster closure. Pendant, 1" L.
049-208
reg. \$16.99
\$12.99

Stay Warm Wishes Necklace
Goldtone necklace with charms. 23 1/2" L with 3 1/2" extender. Lobster closure. Pendant, 2" L.
049-227
reg. \$16.99
\$12.99

Holly Jolly Jewelry



Cozy Wishes Charm Bracelet
Goldtone two-row chain bracelet with colored enamel charm. 7 1/2" L with 1" extender. reg. \$16.99
\$12.99 each

Frosty Winter Earrings
Clear stone accents. 1" L. Pierced. reg. \$12.99
\$9.99 each pair

Snowflake **046-725**

Stocking **046-687**

Snowman **046-710**

Christmas Tree [green enamel]/Goldtone **046-672**

Reindeer [goldtone accents]/Silvertone **046-577**

Penguin [black and red enamel]/Silvertone **046-505**



Festive Fireball Jewel Collection
Glass rhinestones with acrylic pearly beads.
Necklace
16 1/2" L with 3 1/2" extender. Lobster closure. reg. \$19.99
\$14.99 each

Bracelet
Adjustable pull-cord bracelet; one size fits most. reg. \$16.99
\$12.99 each

Red/Silvertone **048-823**

Ivory-colored/Goldtone **048-952**

Green/Goldtone **048-900**

Ivory-colored/Goldtone **049-155**

Red/Silvertone **049-011**

Green/Goldtone **049-102**

Divine Guardians Necklace and Earring Set
 Necklace, 16 1/2" L with 3 1/2" extender. Pendant, ranges from 1"-1 1/4" L. Lobster closure. Pierced studs, 1/2" L.
\$12.99
 each set

Always Loved
 Heart/Goldtone 047-831

Stay Blessed
 Cross/Silvertone 047-210

Be Brave
 Angel Wings/Goldtone 047-167

necklace and earring sets

Dazzling Delights

NEW! LIMITED EDITION

Ocean Blue Mirage Collection
 Blue glass stones set in silvertone.

Necklace and Earring Set
 Y-necklace, 16 1/2" L with 3 1/2" extender. Lobster closure. Pierced drops, 1" L.
107-917
 reg. \$29.99
\$22.99 the set

3-Stone Ring
 With CZ stone accents. Approx. 1/2" W.
 6 107-921
 8 107-993
 10 108-052
 reg. \$12.99
\$9.99

necklace and earring set

Divine Birthstone Cross Necklace
 Colored glass stones set in silvertone. 16 1/2" L with 3 1/2" extender. Lobster closure. Pendant, 1" L.
 reg. \$12.99
\$9.99 each

January 048-015	February 048-072	March 048-087
April 048-216	May 048-220	June 048-350
July 048-364	August 048-440	September 048-508
October 048-603	November 048-728	December 048-785

Vibrant Enamel Jewel Collection
 Goldtone with colorful enamel stations adorned with a coordinating colored stone.

Necklace
 Two-layer necklace: shortest, 16 1/2" L; longest, 18" L with 3 1/2" extender. **108-330**
 reg. \$19.99
\$14.99

Bracelet
 7 1/2" L with 1" extender. **109-833**
 reg. \$12.99
\$9.99

Earrings
 Pierced drops, approx. 1 1/4" L. **110-082**
 reg. \$12.99
\$9.99

NEW! LIMITED EDITION



Blue/Silvertone 107-630

Green/Goldtone 107-697

Jewel Tone Drop Earrings
Colored glass stones with CZ accents. 2 1/2" L.
Pierced. reg. \$16.99

\$12.99 each pair



Red/Goldtone 107-850

Black/Goldtone 107-276

Jewel Tone Stretch Ring
Stretches to fit most.
reg. \$12.99
\$9.99 each



Red/Goldtone
108-124



Blue/Silvertone
108-143



Green/Silvertone
108-158

necklace and earring set



necklace, earring
and bracelet set

Snowfall Whispers
3-Piece Set
Silvertone with sapphire-
and aquamarine-colored
stones. Necklace, 16 1/2" L
with 3 1/2" extender.
Pierced studs, approx. 1/2" L.
Bracelet, one size fits most.
108-215
reg. \$22.99
\$16.99 the set

Crystal Cascade
Necklace and
Earring Set
Black velvet
necklace with
glass stones
set in goldtone.
Necklace,
16 1/2" L with
3 1/2" extender.
Lobster closure.
Pierced drops,
approx. 1 1/2" L.
200-982
reg. \$32.99
\$24.99
the set

Holiday
on Ice

Stainless Steel Faceted Onyx Halo Collection
Genuine onyx stone with clear CZ stone accents set in stainless steel.

Necklace
17" L with 1" extender. Pendant, 1/2" W x 1/2" L. 3-carat weight equivalent.
110-120
reg. \$44.99
\$34.99

Drop Earrings
1" L. Pierced. 2-carat total weight equivalent. **113-120**
reg. \$42.99
\$32.99

Ring
3/4" W x 1/2" L. 3-carat weight equivalent.
5 110-226 8 110-647
6 110-340 9 112-970
7 110-355 10 112-999
reg. \$42.99
\$32.99

Feather
[.04-carat total weight equivalent]
052-162

Snowflake
[1.12-carat total weight equivalent]
052-029

Heart Key
[.08-carat total weight equivalent]
052-143

Sterling Silver CZ Necklace
CZ stone accents set in .925 sterling silver. 17" L with 1" extender. Pendant, approx. 1" L. Spring-ring closure.
reg. \$64.99
\$49.99 each

NEW! LIMITED EDITION

Sterling Silver CZ Collection
.925 sterling silver with CZ stones.

3-Piece CZ Stud Pack
Set of 3 pairs. Pierced studs, 1/4" L. 4.2-carat total weight equivalent (for all three pairs). **202-602**
reg. \$58.99
\$46.99 the pack

Pavé CZ Cross Necklace
17" L with 1" extender. Pendant, 1" L. 1.3-carat total weight equivalent. Spring-ring closure. **202-306**
reg. \$53.99
\$42.99

Cushion Cut CZ Engagement Ring
1/2" W. 4.5-carat total weight equivalent.
5 202-029 8 202-062
6 202-033 9 202-110
7 202-048 10 202-177
reg. \$58.99
\$44.99

Half Eternity CZ Wedding Band
.70-carat total weight equivalent.
5 201-769 8 201-807
6 201-773 9 201-974
7 201-788 10 201-989
reg. \$49.99
\$39.99

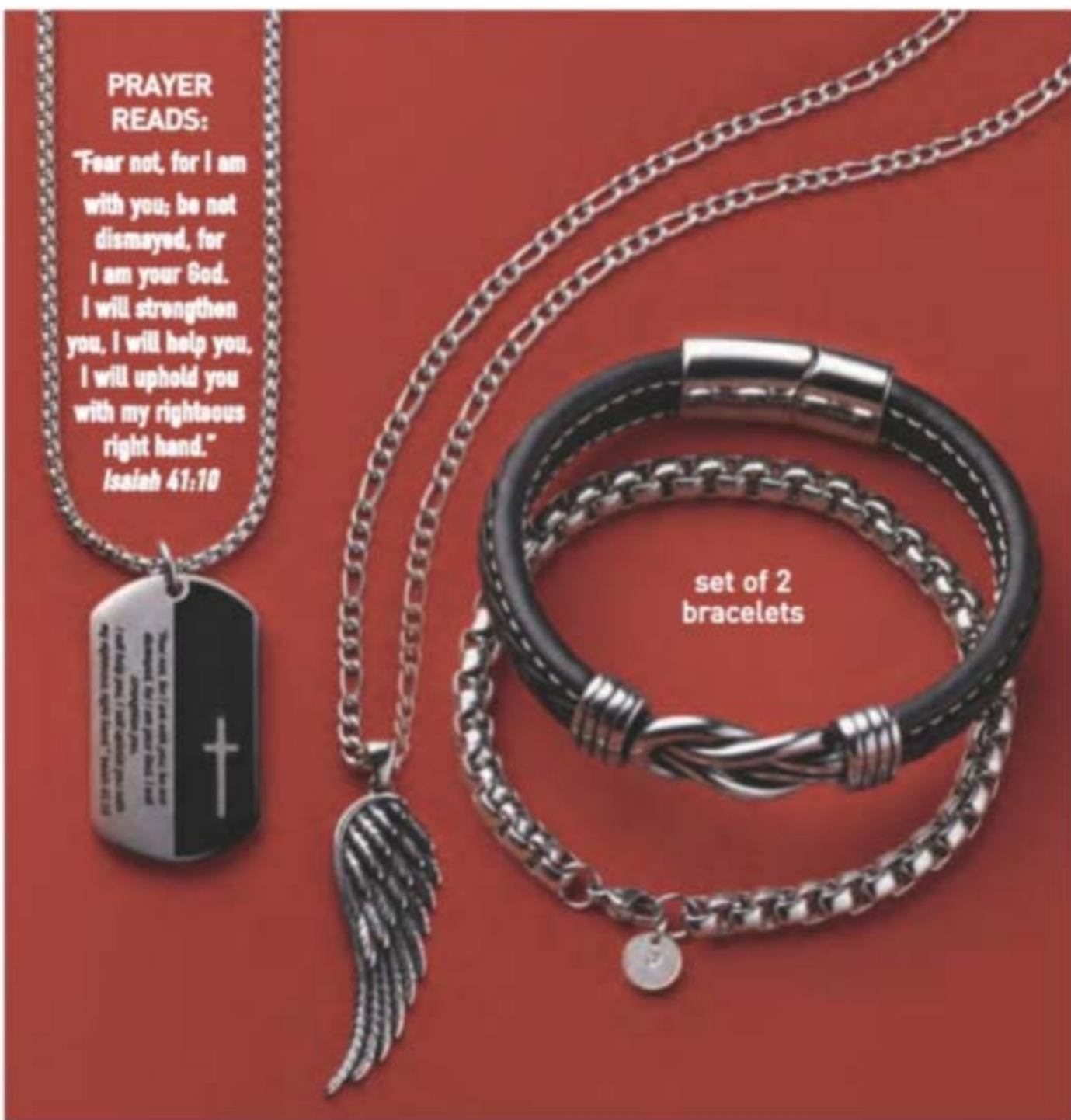
Sterling Celebrations

Men's Stainless Steel Grace Collection
Set in stainless steel.

Angelic Necklace
Chain (with CZ charm), 24" L. Angel wing pendant, 2" L. Lobster closure. **115-099**
reg. \$39.99
\$29.99

Guardian Necklace
Chain (with CZ charm), 24" L. Dog tag pendant with Bible verse, Isaiah 41:10; 1 1/2" L. Lobster closure. **115-103**
reg. \$39.99
\$29.99

Bond with Grace Bracelet Set
Set of two: 6mm stainless steel chain with CZ charm and black leatherlike bracelet. Each, 8" L. **115-180**
reg. \$39.99
\$29.99 the set



PRAYER READS:

"Fear not, for I am with you; be not dismayed, for I am your God. I will strengthen you, I will help you, I will uphold you with my righteous right hand."
Isaiah 41:10

set of 2 bracelets

set of 2 necklaces

set of 2 bracelets

Men's Stainless Steel Beaded Jet Collection
Black beads and stainless steel.

Necklace Set
Set of two: stainless steel chain with CZ charm and one with 8mm beads. Each, 20" L. Lobster closure. **114-475**
reg. \$22.99
\$16.99 the set

Bracelet Set
Set of two: stainless steel chain with CZ charm and one with 10mm beads. Each, 8 1/2" L. **114-532**
reg. \$16.99
\$12.99 the set

Men's Faux Chronograph Jet Watch
Gunmetal-colored bracelet watch with faux sub-dial. 8 1/4" L with 40mm diam. case. Water-resistant to 3 ATM. **113-388**
reg. \$58.99
\$46.99



NEW! LIMITED EDITION

Better
Watch
Out...



Hers Minimalist Bracelet Watch
Silver-tone bracelet watch with stone-bezel case and faux sub-dial. 7 1/4" L with 40mm diam. case. Water-resistant to 3 ATM. **113-149**
reg. \$58.99
\$44.99

His Minimalist Bracelet Watch
Silver-tone bracelet watch with case with faux sub-dial. 8" L with 46mm diam. case. Water-resistant to 3 ATM. **113-134**
reg. \$58.99
\$44.99

Gift Shop Central

- PLAYS EIGHT HOLIDAY TUNES:
- Jingle Bells
 - We Wish You a Merry Christmas
 - Silent Night
 - Deck the Halls
 - Joy to the World
 - The First Noel
 - Hark! The Herald Angels Sing
 - O Christmas Tree

❖ **Christmas Gift Workshop Tabletop**
 Santa and the elves are busy making gifts for all the good boys and girls! Lights up. On/off switch for lights, sound and movement or lights with movement. Takes three AA batteries (not included). 4.5V 5000mA DC jack (adapter not included). Polyresin. 7 1/4" L x 5 1/2" D x 8 3/8" H. Imported.
 118-614
 reg. \$64.99
\$49.99



GIFTS TAKE A RIDE DOWN THE SLIDE!

❖ **Light-Up Shelf Sitter**
 Santa and his snowman buddy are ready for some festive fun and to add holiday cheer to your home. Cheeks light up. On/off switch. Takes two AA batteries (not included). Bean bag bottom provides stability. Polyester. Each, 9" W x 5" D x 25" H. Imported.
 reg. \$32.99

\$24.99 each 💡



Santa
119-022

Snowman
120-242

NEW! LIMITED EDITION

Festive Friends

❖ **Santa Hanging Door and Wall Light-Up with Sound**

Who better to welcome your guests during the holiday season than Jolly Ol' Saint Nick? Motion sensor Santa greets guests and says: "Ho, Ho, Ho! Merry Christmas!" Sign lights up. Hangs on door or wall. Can be used indoors or in a covered outdoor area. On/off switch. Takes two AA batteries (not included). MDF, polyester. 12" L x 4½" D x 18" H. Imported.

118-820

reg. \$44.99

\$34.99 💡 🔊

❖ **Three-Figure Shelf Sitter**

Our Christmas trio comes bearing gifts! Santa, Elf and Reindeer welcome the season with holiday cheer. Lights up. On/off switch. Takes two AA batteries (not included). MDF base provides stability. Polyester. 14" L x 4" D x 12" H. Imported.

120-257

reg. \$49.99

\$39.99 💡



Sweet on Santa



plays eight holiday tunes

❖ Candy Shop Tabletop

Santa pops out to welcome one and all to this sugar wonderland! Lights up. On/off switch for lights, sound and movement or lights with movement. Takes three AA batteries (not included). 4.5V 5000mA DC jack (adapter not included). Plastic. 9 7/8" L x 6 7/8" D x 10 1/2" H. Imported.

123-309
reg. \$69.99

\$54.99   

NEW! LIMITED EDITION




plays eight holiday tunes

❖ Farm Fresh Tree Shop Tabletop

Nothing says Christmas like picking out your Christmas tree, fresh from the farm! Lights up. On/off switch for lights or lights with sound. Takes three AAA batteries (not included). Plastic, wire. 7 1/4" L x 4 1/2" D x 5 1/2" H. Imported.

120-276
reg. \$58.99

\$44.99  

❖ Christmas Ski Park Tabletop

Let's shred some powder! Snowboarder rides down the slope and heads back up for more thrills. Lights up. On/off switch for lights, sound and movement or lights with movement. Takes three AA batteries (not included). Polyresin, plastic. 10 1/4" L x 5 1/4" D x 5 1/4" H. Imported.

123-988
reg. \$64.99

\$49.99



plays eight holiday tunes



❖ Holiday Memories Pewter Ornament

Trim your tree with our annual collectible ornament. Embossed with the 2024 Avon Fine Collectibles stamp on back. Includes velvet keepsake pouch and easy-to-hang tassel. 2 1/4" L x 2" W. Pewter, acrylic, polyester. Imported.

123-370
reg. \$19.99

\$15.99

Joy to the World



❖ **Old World Holy Family Figurine**
Traditional vintage-style Nativity in glistening gold and white with pearly accents. Polyresin, acrylic. 4" L x 4" W x 8" H. Imported. **126-217**
reg. \$22.99
\$16.99

❖ **Wooden Silent Night Light-Up Sign**
Rustic seasonal block sign in a stacked design with Holy Family, Christmas star and "Silent Night, Holy Night." With warm white string lights. On/off switch. Takes two AAA batteries (not included). MDF. 12" L x 2" W x 11 1/2" H. Imported. **127-778**
reg. \$44.99
\$34.99 💡



NEW! LIMITED EDITION

❖ **Old World Nativity Story Ornaments-Three Pack**
Trio of traditional ornaments tell the story of the Nativity. The Holy Family, shepherd with sheep and wise men are adorned in glistening gold and white with pearly accents and goldtone star charm. Includes matching gold string for hanging. Polyresin, acrylic. Each, 4" L x 3/4" W x 10 1/4" H. Imported. **127-763**
reg. \$24.99
\$19.99 set of 3

❖ **Wooden Lighted Nativity**
Sculpted Nativity scene with back-lit filigree design creates a peaceful silhouette of the Holy Family. With warm white string lights. On/off switch. Takes two AAA batteries (not included). MDF. 13 1/4" L x 2" W x 8 1/4" H. Imported. **125-096**
reg. \$49.99
\$39.99 💡



Treasured Traditions



❖ **Old World Santa Figurine**

Traditional vintage-style Santa and owl friend celebrate the season in glistening gold and white. Polyresin. 5½" L x 4½" W x 10" H. Imported. **128-812**
reg. \$24.99
\$19.99

❖ **Frosty Glow Light-Up Tree**

Light up the season with Avon's iconic vintage-inspired Christmas tree. Warm lights twinkle from within, providing a soft glow. On/off switch. Takes three LR44 button cell batteries (included). Ceramic. 4¾" L x 3½" W x 7¾" H. Imported. **129-732**
reg. \$19.99
\$14.99 💡



NEW! LIMITED EDITION

❖ **Ceramic Angels Figurines-Three Pack**

Hark! Our trio of herald angels gleam with shimmering stars that are lit from within. Goldtone accents. Each figurine has an on/off switch and takes three LR44 button cell batteries (included). Ceramic. Each, 12" L x 2½" W x 4¾" H. Imported. **125-134**
reg. \$42.99
\$32.99 set of 3 💡



❖ **Winter Express Light-Up Train**

All aboard the winter express to Christmas. Warm lights twinkle from within, providing a soft glow. Each car has an on/off switch and takes three LR44 button cell batteries (included). Ceramic. Total train: 12" L x 2¾" W x 4¾" H. Imported. **128-975**
reg. \$32.99
\$24.99 💡



Let it glow!
 Let it glow!
 Let it glow!



Beyond Glow Snail Mucin Complex Serum & Cream Duo

- Includes box with:
- **Snail Mucin Complex + Panthenol Cream**
Helps lock in moisture. 3.7 fl. oz.
 - **Snail Mucin Complex + Niacinamide Serum**
Visibly evens tone and strengthens the skin barrier. 3.3 fl. oz.

\$39.99
BOXED SET OF 2
 050-174
\$68 VALUE



Beyond Glow Vitamin C Serum & Galvanic Booster Duo

- Includes box with:
- **Vitamin C 6% + Ferulic Acid Serum**
Visibly boosts brightness. 1 fl. oz.
 - **Galvanic Booster Device**
Boosts absorption of vitamin C by 2X*. Red LED light. Auto turn on/off. Two cell batteries (included).

\$55.99
BOXED SET OF 2
 050-208
\$98 VALUE



Beyond Glow Niacinamide 10 X 10 Duo

- Includes box with:
- **Niacinamide 10% + Panthenol Serum**
Helps improve even tone and elasticity. 1 fl. oz.
 - **Niacinamide 10% All-in-One Cream**
Visibly brightens skin and reduces fine lines. 3.7 fl. oz.

\$39.99
BOXED SET OF 2
 050-250
\$76 VALUE

NEW! LIMITED EDITION



NEW! LIMITED EDITION

Anew Ultimate Gift Set

Three full-size moisturizers:

- **Anew Ultimate Multi-Performance Day Cream Broad Spectrum SPF 25**
1.7 oz. net wt.
- **Anew Ultimate Multi-Performance Night Cream**
1.7 oz. net wt.
- **Anew Ultimate Multi-Performance Eye System Cream**, .5 oz. net wt.
Elixir, .09 oz. net wt.

\$59.99

3-PIECE SET

with a 5-pack of gift bags

050-485

\$131 VALUE

Anew Platinum Gift Set

Three full-size moisturizers:

- **Anew Platinum Day Cream Broad Spectrum SPF 25**
1.7 oz. net wt.
- **Anew Platinum Night Cream**
1.7 oz. net wt.
- **Anew Platinum Eye & Lip Cream**
Dual applicator, .5 oz. net wt.

\$59.99

3-PIECE SET

with a 5-pack of gift bags

050-265

\$131 VALUE



Give Radiantly



get a 5-pack of gift bags (\$5 value)
with any gift set purchase,
pages 32-33

Each gift bag, 8" W x 3 1/4" D x 10 1/2" H.
Paper with ribbon handle.



Spa la la la!

Avon Senses Frosted Vanilla Honey Cake Collection

Celebrate the season with the sweet aroma of freshly baked cake as you indulge in the warm, decadent fragrance of frosted vanilla with a drizzle of golden honey. Leaves your hair and body delightfully scented.

Body Lotion

Moisture-rich body lotion with smoothing shea butter. 8 fl. oz. 189-702 reg. \$18

\$14.99

Hair & Body Mist

Refreshing mist with soothing aloe vera. 8 fl. oz. 189-808 reg. \$18

\$14.99

Bubble Bath

Luxurious bubbles gently cleanse. 24 fl. oz. 189-850 reg. \$16

\$12.99

\$32.99

3-PIECE SET

with a 5-pack of gift bags

189-717

\$57 VALUE



get a 5-pack of gift bags (\$5 value) with any gift set purchase, pages 34-35

Each gift bag, 8" W x 3 1/4" D x 10 1/2" H. Paper with ribbon handle.

Avon Senses Jasmine Blossom Holiday Collection

Relax in the fantasy of a beautiful flower garden as the fresh, elegant fragrance of jasmine, lily and ylang-ylang fills the air. Leaves your body and hair delightfully scented.

Body Lotion

Moisture-rich with shea butter and vitamin E. 8 fl. oz. 731-446 reg. \$18

\$14.99

Hair & Body Mist

A refreshing mist, with soothing aloe vera extract. 8 fl. oz. 731-450 reg. \$18

\$14.99

Bubble Bath

Luxurious bubbles gently cleanse. 24 fl. oz. 731-431 reg. \$16

\$12.99

\$32.99

3-PIECE SET

with a 5-pack of gift bags

049-690

\$57 VALUE

All dermatologically tested. Body Lotion and Hair & Body Mist are formulated without parabens, mineral oil, phthalates and dyes.

NEW! LIMITED EDITION



Skin So Soft Pure Nature Holiday Gift Set

Go clean and green. Over 94% naturally derived. Includes:

Revitalizing Body Cream

Smooth on moisturizing cream after bath or shower. 12 fl. oz.

Revitalizing Shower Gel

Richly lathering gel. 12 fl. oz.

Revitalizing In-Shower Body Lotion

Hydrating and softening lotion. Apply onto wet skin after shower or bath. 8 fl. oz.

\$36.99

3-PIECE SET

with a 5-pack of gift bags

049-451

\$67 VALUE

Shower Gel and Body Cream bottles: 95% post-consumer recycled material, excluding cap. Body Lotion tube: 55% post-consumer recycled material, excluding cap.



Organist Apple Cider Vinegar For Hair Gift Set
 Cleanse, clarify and hydrate scalp and hair. With apple cider vinegar extract, ginger, organic lemon water, cooling menthol and enriching biotin for a healthy-looking shine. Formulated without silicone oil or sulfates. Includes:

Clarifying Shampoo
 For oily hair. 16.9 fl. oz.

Clarifying Conditioner
 Great for oily, dull hair. 16.9 fl. oz.

Clarifying Water Treatment
 Rinse-out treatment infused with collagen and hyaluronic acid. Helps locks look naturally soft, shiny and healthy. 6 fl. oz.

\$33.99
3-PIECE SET
 with a 5-pack of gift bags
 050-930
\$62 VALUE

Organist Apple Cider Vinegar For Body Gift Set
 Exfoliate, detox, nourish and refresh your skin. With apple cider vinegar extract, ginger, cooling menthol and enriching biotin. Includes:

Avon Shower Brush
 Brush helps to remove dead skin cells as it cleanses. With massage nubs. Non-slip, comfort handle.

Exfoliating Body Scrub
 With panthenol and AHA/BHA/PHA. 6.7 fl. oz.

Body Wash
 For normal to oily skin. With panthenol. 16.9 fl. oz.

\$28.99
3-PIECE SET
 with a 5-pack of gift bags
 051-147
\$53 VALUE



get a 5-pack of gift bags (\$5 value) with any gift set purchase, page 36

Each gift bag, 8" W x 3 1/4" D x 10 1/2" H. Paper with ribbon handle.



Organist Rosemary Mint Gift Set
 With rosemary and biotin, to help to keep your scalp and hair looking healthy. Refreshing, cooling peppermint helps your scalp feel revitalized. Includes:

Strengthening Shampoo
 3.38 fl. oz.

Strengthening Conditioner
 3.38 fl. oz.

Hair Strengthening Oil
 Hair feels fortified, nourished and refreshed. 2 fl. oz.

Gua Sha Scalp Massager
 Helps improve circulation for visibly strong, healthy hair. 100% wood.

\$35.99
4-PIECE SET
 203-279
\$56 VALUE

Winter Refreshments

NEW! LIMITED EDITION

A Scent-Sational Holiday

Daily Moisture
With vitamin E and extracts of cranberry, blueberry and acai. Hint of musk scent.
920-013

BYOND
Daily Moisture
Classic Hand Cream
Hydratation Quotidienne
30 mL / 1 fl. oz. US

Deep Moisture Olive
With moisturizing rice milk, avocado oil and olive extract. Green floral musk scent.
920-032

BYOND
Deep Moisture Olive
Classic Hand Cream
Olive Hydratation Profonde
30 mL / 1 fl. oz. US

Passion & Beyond Classic Hand Cream Collection
Plant-derived. Infused with natural ingredients and evocative fragrances. Hands feel silky soft, with a uniquely alluring scent. Each, 1 fl. oz. reg. \$6
\$3.99 each

Waterful
With rosemary and bergamot. With a light, watery, fruity note.
919-984

BYOND
Waterful
Classic Hand Cream
Aqueux
30 mL / 1 fl. oz. US



◆ **LYRD Candle**
Gives 30 hours of burn time. 7 oz. 3 1/4" diam. x 3 1/2" H. Glass jar, soy-blend wax. Assembled in USA. reg. \$24
\$18.99 each

◆ **Get Roasted**
Chestnuts roasting on an open fire, Jack Frost nipping at your nose! Let the holiday merriment begin with welcoming notes of aromatic roasted chestnuts, sugary cinnamon and whipped vanilla cream.
050-686

◆ **The Snuggle Is Real**
Grab the hot cocoa and a good book... 'Tis the season to snuggle up and get cozy by the fire with notes of rich bourbon, vanilla extract and crispy, earthy white woods.
050-724

◆ **Oh My Gourd!**
Fall's favorite mascot gets the pie treatment with delicious spicy notes of sweet pumpkin, buttery pecan and maple syrup.
050-652



Candles not intended to heat or cook food. Never leave burning candles unattended. Keep away from children and pets.

GOTTA GLOW SET

Anew Vitamin C Nourishing Body Butter
7.8 fl. oz.

Anew Vitamin C Glow Body Scrub
9 oz. net wt.

Isa Knox Anew Clinical Revitalize & Reveal Resurfacing Lotion for Body
5 fl. oz.

3-PIECE SET

\$41.99

\$102 VALUE

190-918



CLEANSE AND TREAT SET #1

Isa Knox Anew Clinical Revitalize & Reveal Extra Strength Retexturizing Peel
30 pads.

Isa Knox Anew Clinical Revitalize & Reveal Advanced Wrinkle Corrector
1.7 fl. oz.

Rice Water Bright Mild Cleansing Water
16.9 fl. oz.

3-PIECE SET

\$48.99

\$98 VALUE

190-520



CLEANSE AND TREAT SET #2

Isa Knox Anew Clinical Line Eraser with Retinol Treatment
1 oz. net wt.

Isa Knox Anew Clinical Revitalize & Reveal Resurfacing Expert Smoothing Fluid
1 fl. oz.

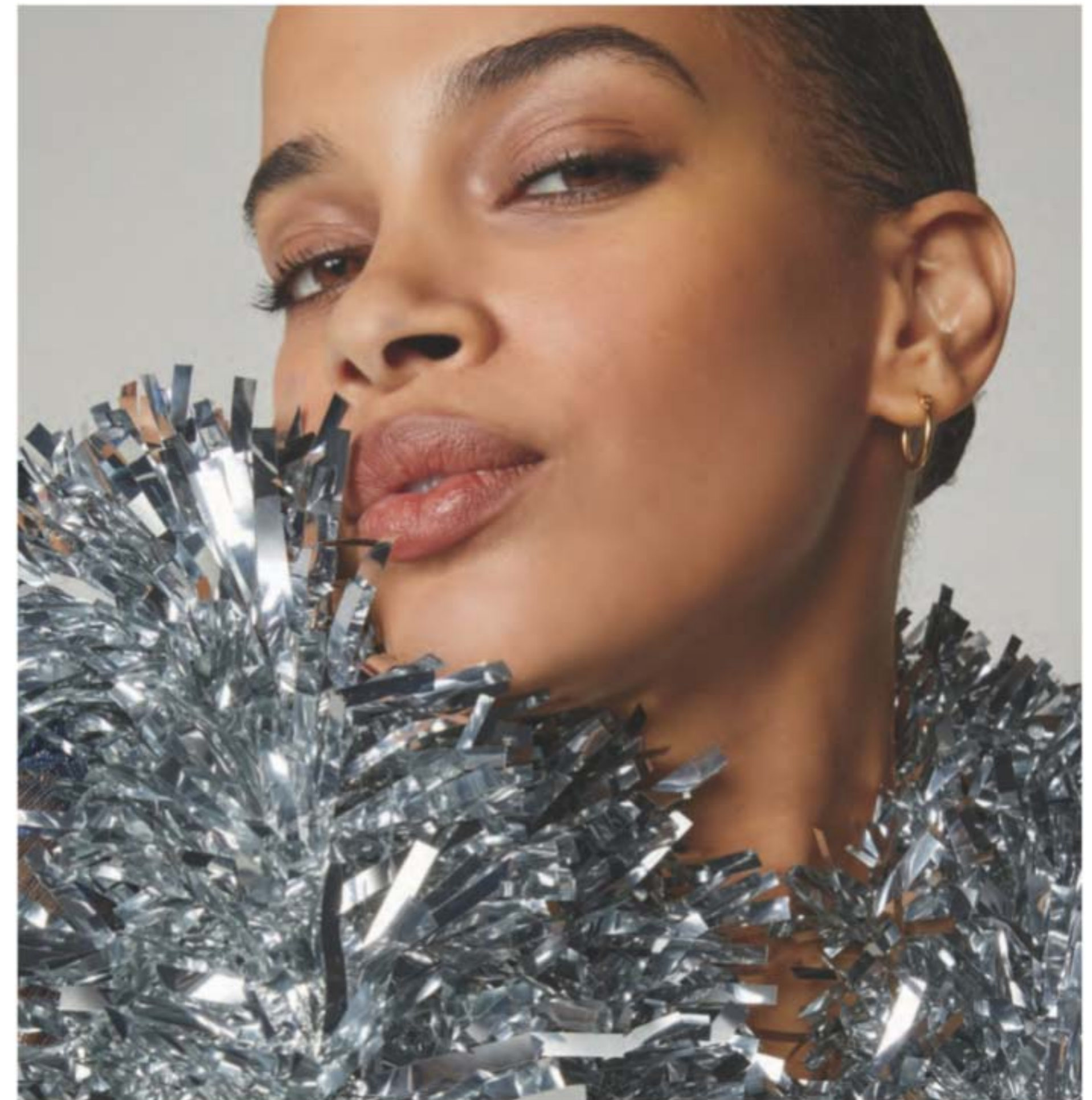
Isa Knox LXNEW Clean Nourishing Cream Cleanser
5 fl. oz.

3-PIECE SET

\$48.99

\$103 VALUE

190-679



FACE AND EYES SET

Anew Ultimate Supreme Advanced Performance Crème
1.7 oz. net wt.

Isa Knox Anew Clinical Collagen Booster Eye Lift Pro Dual Eye System
Gel, .33 fl. oz.
Cream, .33 fl. oz.

Rice Water Bright Foaming Cleanser
10.1 fl. oz.

3-PIECE SET

\$55.99

\$119 VALUE

190-540





CHI® Essentials Revive Keratin + Bonding Restoring Shampoo & Restoring Conditioner
Each, 12 fl. oz.

BOTH FOR \$27.99
\$50 VALUE
192-227



Elastine Salon de Color Color Vibe Purple Shampoo & Purple Conditioner
Each, 8.4 fl. oz.

BOTH FOR \$20.99
\$38 VALUE
192-470



Elastine HempharmX Hydrating Shampoo & Hydrating Conditioner
Each, 12 fl. oz.

BOTH FOR \$27.99
\$48 VALUE
191-379



Dr. Groot Scalp Fortifying Hair-Thickening Shampoo
13.5 fl. oz.
Premium Scalp Cleansing Brush

BOTH FOR \$31.49
\$54 VALUE
191-326



SKIN SO SOFT ORIGINAL SET

Original Beauty Bar Soap
3.17 oz. net wt.

Original Gelled Body Oil
6.76 fl. oz.

Original Bonus-Size Bath Oil
25 fl. oz.

3-PIECE SET
\$26.99
OVER \$48 VALUE
191-254



SKIN SO SOFT RADIANT MOISTURE SET

Radiant Moisture Shower Gel
5 fl. oz.

Radiant Moisture Replenishing Hand Cream
3.4 fl. oz.

Radiant Moisture Bonus-Size Bath Oil
25 fl. oz.

3-PIECE SET
\$24.99
\$45 VALUE
191-235





HAIKU HAND & BODY SET

fresh green floral
Yuzu, muguet and blonde woods.

Eau de Parfum
1.7 fl. oz.

Body Lotion
6.7 fl. oz.

Hand Cream
2.5 fl. oz.

3-PIECE SET

\$24.99

\$45 VALUE

560-741



RARE PEARLS HAIR & BODY SET

soft floral
Magnolia, white pepper and rosewood.

Eau de Parfum
1.7 fl. oz.

Body Lotion
6.7 fl. oz.

Hair and Body Mist
3.25 fl. oz.

3-PIECE SET

\$30.99

\$56 VALUE

190-152



WILD COUNTRY ROLL-ON SET

fresh aromatic
Lavender, coriander seed and sandalwood.

Cologne*
3 fl. oz.

Hair & Body Wash
5 fl. oz.

Roll-On Anti-Perspirant Deodorant
2.6 fl. oz.

3-PIECE SET

\$18.99

\$37 VALUE

561-088

*Packaging may vary.



FAR AWAY PAMPERING SET

amber floral
Freesia, jasmine and amber.

Hand Cream
2.5 fl. oz.

Body Lotion
6.7 fl. oz.

Body Scrub & Wash
6.7 fl. oz.

3-PIECE SET

\$17.99

\$35 VALUE

561-384



New Beyond Glow Lipcerin Lip Care

Improves elasticity. Boosts radiance. Gently exfoliates.



Nourish

Beyond Glow Lipcerin Intensive Nourishing Lip Care
reg. \$20
\$14.99



An intensive, glistening formula that nourishes dry lips with moisture. With a plumping peptide, moisture-enhancing glycerin and smoothing shea butter. Clear finish. .5 fl. oz.



Nourishing
052-325

Plump

Beyond Glow Lipcerin Plump and Cool Lip Care
reg. \$20
\$14.99



An intensely moisturizing, glistening formula that visibly plumps and softens lips. With cooling menthol for an instant visible increase in lip volume. Clear finish. .5 fl. oz.



Plump and Cool
052-344

Tint

Beyond Glow Lipcerin Hydrating Tinted Lip Care
reg. \$20
\$14.99



An intensely moisturizing, glistening formula that visibly softens lips and adds a glossy hint of color. With a plumping peptide, moisture-enhancing glycerin and smoothing shea butter. .5 fl. oz.



Twinkle 052-750
Flash 052-909
Splendor 053-078
Gleam 053-097
Flare 053-101
Smolder 053-140

Healthy-looking, hydrated skin starts here. Address your skin care concerns with our high-performance treatments.

Key ingredients



CERAMIDE
Helps protect skin's moisture barrier to keep lips looking firm and smooth



SEA BUCKTHORN
Known to be a powerful, natural antioxidant and help with skin health



PHA
A gentle exfoliant known to attract water molecules to moisturize

55% more exfoliated lips*

30% shorter lip lines*

15% immediate increase of lip volume*

24% softer lips*

*In 2 weeks, based on using 3x a day.

CLEANSERS with benefits

Complete your Beyond Glow regimen with cleansers that help skin feel smoother and reveal a healthy-looking glow.

93%
Said skin looks brighter after 1 use*



Cleanse + Brighten

For Normal Skin
With **Vitamin C & AHA**

Beyond Glow Vitamin C + AHA Facial Cleanser

A foaming facial cleanser that helps enhance your healthy-looking glow, leaving skin feeling soft and smooth. 5 fl. oz. **628-450** reg. \$14 **\$10.99**

96%
Said skin looks smoother after 1 use*



Cleanse + Exfoliate

For Oily Skin
With **Salicylic & Citric Acids**

Beyond Glow Salicylic Acid + Citric Acid Facial Cleanser

An exfoliating facial cleanser that helps enhance your healthy-looking glow, leaving skin feeling soft and smooth. 5 fl. oz. **627-798** reg. \$14 **\$10.99**

100%
Said skin feels hydrated after 1 use*



Cleanse + Hydrate

For Dry Skin
With **Hyaluronic Acid & Niacinamide**

Beyond Glow Hyaluronic Acid + Niacinamide Facial Cleanser

A hydrating facial cleanser that helps enhance your healthy-looking glow, leaving skin feeling soft and smooth. 5 fl. oz. **627-821** reg. \$14 **\$10.99**

*Based on a consumer-perception study of 30 people.

The New Star Ingredient: SNAIL MUCIN Complex

Clinically tested to improve skin tone and brightness

Beyond Glow Snail Mucin Complex + Panthenol Cream

Moisturizes while it visibly improves texture and elasticity. With snail mucin complex and panthenol, which helps lock in moisture. 3.7 fl. oz. **255-536** reg. \$34 **\$25.99**

Beyond Glow Snail Mucin Complex + Niacinamide Serum

Visibly brightens, moisturizes and retexturizes. With snail mucin complex and niacinamide, also known as vitamin B3, which helps even skin tone and strengthen the skin barrier. 3.3 fl. oz. **255-574** reg. \$34 **\$25.99**



Our cream and serum, formulated with snail mucin complex, moisturize and help visibly brighten skin with a clear, cushiony yet fast-absorbing texture that disappears into the skin while plumping it up with hydration.

Real Formulas, Real Results



"I'M GETTING SO MANY COMPLIMENTS ON MY BARE SKIN. I ALMOST DON'T WANT TO EVEN WEAR MAKEUP!"

"BEYOND GLOW IS A GAME CHANGER. I HAVE SEEN A SIGNIFICANT IMPROVEMENT IN MY SKIN."

The Avon Representatives were gifted with the Beyond Glow Snail Mucin Cream, plus the four serums from the Beyond Glow regimen (pages 49-52), which they used with the Galvanic Booster Device, AM and PM, for two weeks.

The Power of Niacinamide



Beyond Glow Niacinamide 2% Cream Mist

Deliver an instant boost of hydration to your skin with this creamy, fast-absorbing spray-on serum that can be used under or over makeup for glowing skin anytime, anywhere. Infused with niacinamide. 3.3 fl. oz. **617-365** reg. \$34

\$25.99



Beyond Glow Niacinamide 10% + Panthenol Serum

Helps improve even tone and elasticity. Niacinamide, also known as vitamin B3, helps even skin tone and replenish the skin barrier. Panthenol, also known as provitamin B5, helps lock in moisture. 1 fl. oz. **255-612** reg. \$38

\$29.99



Beyond Glow Niacinamide 10% All-in-One Cream

Nighttime facial cream that helps enhance your healthy-looking glow. All-in-one facial cream that visibly brightens skin, reduces fine lines and helps support the skin barrier. Contains retinol. 3.7 fl. oz. **617-350** reg. \$38

\$29.99

serum + cream together
3X
Reduction in the look of pores*

Serum + cream, when used together:

Reduce the look of pores by 44%[†]

[†]In a 4-week clinical trial of 32 people.

*Versus using the serum alone, based on a clinical study.

NEW



Beyond Glow Niacinamide 10% Neck Firming Cream

Nighttime hydrating neck and chest cream formulated with tried-and-true ingredients niacinamide, shea butter and squalane derived from olive oil, plus panthenol, which helps strengthen the skin barrier. Contains retinol. 3.3 fl. oz.

052-249 reg. \$38

\$29.99

NEW



Beyond Glow Niacinamide 10% Eye Cream

Nighttime moisturizing eye cream formulated with tried-and-true ingredients niacinamide, caffeine, plus panthenol, which helps strengthen the skin barrier. Contains retinol. 1 fl. oz. **052-272** reg. \$24

\$19.99

Niacinamide 101



Did you know?

Niacinamide is one of the top-trending skin care ingredients.

Niacinamide helps to:

- Reduce the appearance of enlarged pores
- Minimize the look of wrinkles and fine lines
- Support the skin barrier
- Promote even skin tone

Niacinamide pairs well with:

- Retinol → smooth skin
- Vitamin C → radiant skin



Hydrate

Beyond Glow
Hyaluronic Acid 1.5% + Ferulic Acid Serum

Hyaluronic acid, known as a "moisture magnet," helps infuse skin with instant and lasting hydration. Ferulic acid, a powerful antioxidant, helps defend skin from environmental stressors. 1 fl. oz. **255-593** reg. \$38

\$29.99



Brighten

Clinically tested to improve skin radiance in 3 days

Beyond Glow
Vitamin C 6% + Ferulic Acid Serum

Vitamin C visibly improves radiance for glowing skin. Ferulic acid, a powerful antioxidant, helps protect skin from environmental stressors. 1 fl. oz. **255-589** reg. \$38

\$29.99

Q What makes Beyond Glow Vitamin C serum so special?

A **125 HOUR** antioxidant effect*

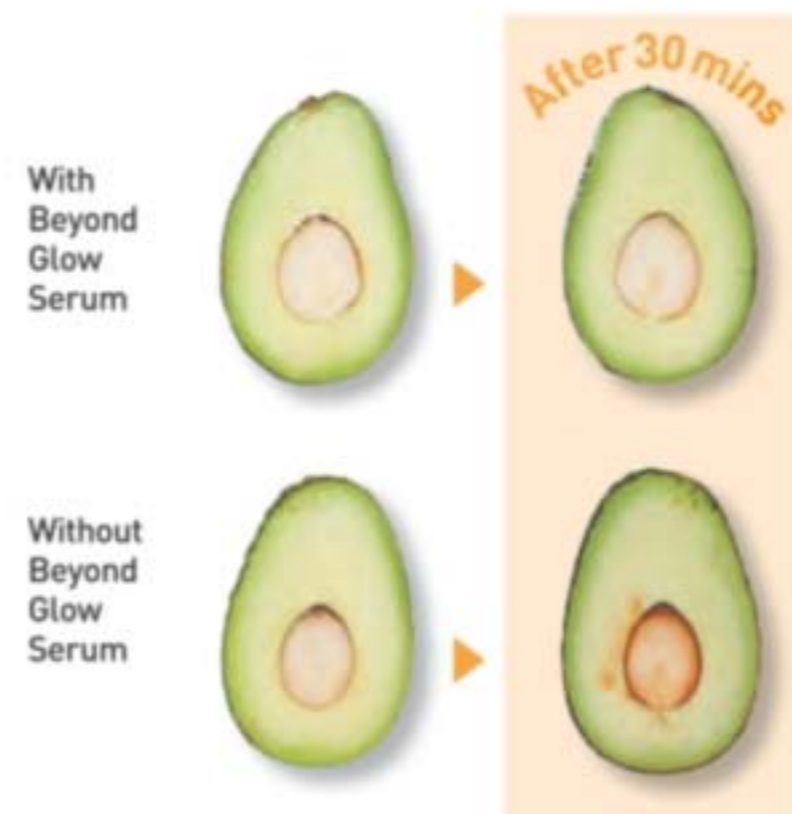
4X stronger skin barrier in 2 weeks†

*Evaluated by in vitro test.

†Based on stripped skin instrumental study on 31 people.

Just look at the antioxidant effect!

of Beyond Glow Vitamin C 6% + Ferulic Acid Serum



Galvanize your results

SKIN CARE

3-in-1:
Red LED light
Galvanic current
Vibration

Easy-grip handle

Turns on automatically when it touches the skin

3 mins
to revitalized, brighter skin

Beyond Glow Galvanic Booster Device

Give your skin a spa treatment at home in three minutes. Red LED light helps tone the appearance of skin texture, enhances your radiant glow and visibly promotes skin health. On-the-go compact design. Automatically turns on and off. Uses two cell batteries (included). **255-627** reg. \$60

\$49.99

Boosts absorption of vitamin C by **2X***

Use with Vitamin C 6% + Ferulic Acid Serum for optimal results.

*Evaluated by Dongduk Women's University Industry-Academia Cooperation (ex vivo test, DPPH, Oct. 13 to 24, 2023).



This image was generated using artificial intelligence.

face the day with supreme radiance

100%

agreed skin looks more youthful, firmer and re-contoured



NEW

Anew Ultimate Supreme Radiant Firming Cream

A lightweight moisturizer perfect for daytime use. With panthenol, niacinamide and peptides to help boost hydration, visibly restore brightness and firm skin contours. With bakuchiol, an alternative to retinol, to visibly reduce wrinkles and discolorations without irritation. Clinically tested to improve skin texture and elasticity. 1.7 fl. oz. 835-052 reg. \$60

\$39.99



Anew Ultimate Multi-Performance Night Cream
It works while you sleep to revive and recreate the look of youthful skin. 1.7 oz. net wt. 763-311 reg. \$42
\$27.99



Anew Ultimate Night Repair Serum
See improved tone and texture. With peptides, licorice, hyaluronic acid and niacinamide. Use PM before moisturizer. 1 fl. oz. 625-355 reg. \$45
\$28.99



Anew Ultimate Multi-Performance Day Cream Broad Spectrum SPF 25
See wrinkles fade and youthful vibrance return. 1.7 oz. net wt. 763-307 reg. \$42
\$27.99



Anew Ultimate Multi-Performance Eye System
Visibly smooths crow's-feet and de-puffs under-eye bags. Cream, .5 oz. net wt. Elixir, .09 oz. net wt. 854-433 reg. \$42
\$27.99



Anew Ultimate Supreme Eye Balm
Moisturizing formula infused with squalane, sunflower seed oil and antioxidant vitamin E. Wear alone or under makeup. 0.1 oz. net wt. 625-340 reg. \$45
\$28.99



Anew Ultimate Supreme Advanced Performance Crème
With Black Pearl Extract. See a dramatic difference in deep wrinkles and skin radiance. 1.7 oz. net wt. 014-735 reg. \$60
\$39.99



Anew Ultimate Supreme Dual Elixir
With Black Pearl Extract and precious oils. See a dramatic difference in even advanced signs of aging. Serum/Oil, .67 fl. oz. each. 963-925 reg. \$60
\$39.99

wake up to lifted-looking skin



90%

agreed skin looks dramatically younger, feels firmer and has more visibly youthful definition

NEW

Anew Platinum Sculpting Sleep Mask
An overnight mask that helps visibly lift, plump and nourish skin while you sleep. Formulated with skin-contouring ingredients, including tetrapeptide, panthenol, niacinamide and yeast extract. Clinically tested to improve skin texture and wrinkles in two weeks. 1.7 fl. oz. 835-033 reg. \$42
\$27.99



Anew Platinum Night Cream
Skin appears smoother overnight, resculpted over time. 1.7 oz. net wt. 753-439 reg. \$42
\$27.99



Anew Platinum Day Cream Broad Spectrum SPF 25
With Paxillium Technology to help defy gravity and Radiascent Microspheres to help visibly restore radiance. 1.7 oz. net wt. 184-146 reg. \$42
\$27.99



Anew Platinum Age Delay Serum
With niacinamide, panthenol and peptide. Formulated to visibly boost elasticity for a firmer look. Use AM and PM before moisturizer. 1 fl. oz. 625-609 reg. \$45
\$28.99



Anew Platinum Firm and Sculpt Cream for Neck and Chest
With Peptide Lifting Complex to treat the skin on your neck and chest, which is more vulnerable to wrinkles and sagging. Use PM after cleansing. 1.7 oz. net wt. 763-584 reg. \$42
\$27.99



Anew Platinum Eye & Lip Cream
Dual applicator. .5 oz. net wt. 902-614 reg. \$42
\$27.99



Anew Platinum Sculpting Body Serum
With moisture-boosting niacinamide, panthenol (provitamin B5) and peptides. 6.7 fl. oz. 506-249 reg. \$45
\$28.99



Isa Knox LXNEW Ultimate Rejuvenating Serum
 With paeonol and ceramides, visibly improves elasticity, radiance and skin texture. Reduces the appearance of wrinkles.
 1.35 fl. oz. **756-624** reg. \$56
\$22.50 LOWEST PRICE EVER



Isa Knox LXNEW Ultimate Rejuvenating Eye Serum
 Infused with paeonol and niacinamide to help visibly reduce fine lines around the eye area and depuff under-eye bags. 1 fl. oz. **567-177** reg. \$50
\$20 LOWEST PRICE EVER



Isa Knox LXNEW Platinum Sculpting Neck and Chest Cream
 With hibiscus extract, ceramide, shea butter, panthenol and squalane to help skin appear firmer, smoother and lifted. 1.7 fl. oz. **548-069** reg. \$50
\$20 LOWEST PRICE EVER

LOWEST PRICES EVER!



Isa Knox LXNEW Ultimate Rejuvenating Day Cream
 With paeonol, visibly reduces wrinkles and improves the look of elasticity, radiance and skin texture. With nutmeg to help visibly even skin tone. 1.7 fl. oz. **351-892** reg. \$50
\$20 LOWEST PRICE EVER



Isa Knox LXNEW Ultimate Rejuvenating Multi-Corrector
 Paeonol-infused serum with niacinamide and panthenol. Skin looks smoother and more youthful. 1.7 fl. oz. **496-595** reg. \$44
\$17.50 LOWEST PRICE EVER



Isa Knox LXNEW Platinum Sculpting Oil Serum
 1.35 fl. oz. **318-720** reg. \$56
\$22.50 LOWEST PRICE EVER



Isa Knox LXNEW Ultimate Rejuvenating Dual Night Cream
 With paeonol and macadamia oil. Volume Cream: Rice bran extract helps visibly plump skin. Firming Cream: Helps boost collagen and elastin. Each, .85 fl. oz. **564-015** reg. \$50
\$20 LOWEST PRICE EVER

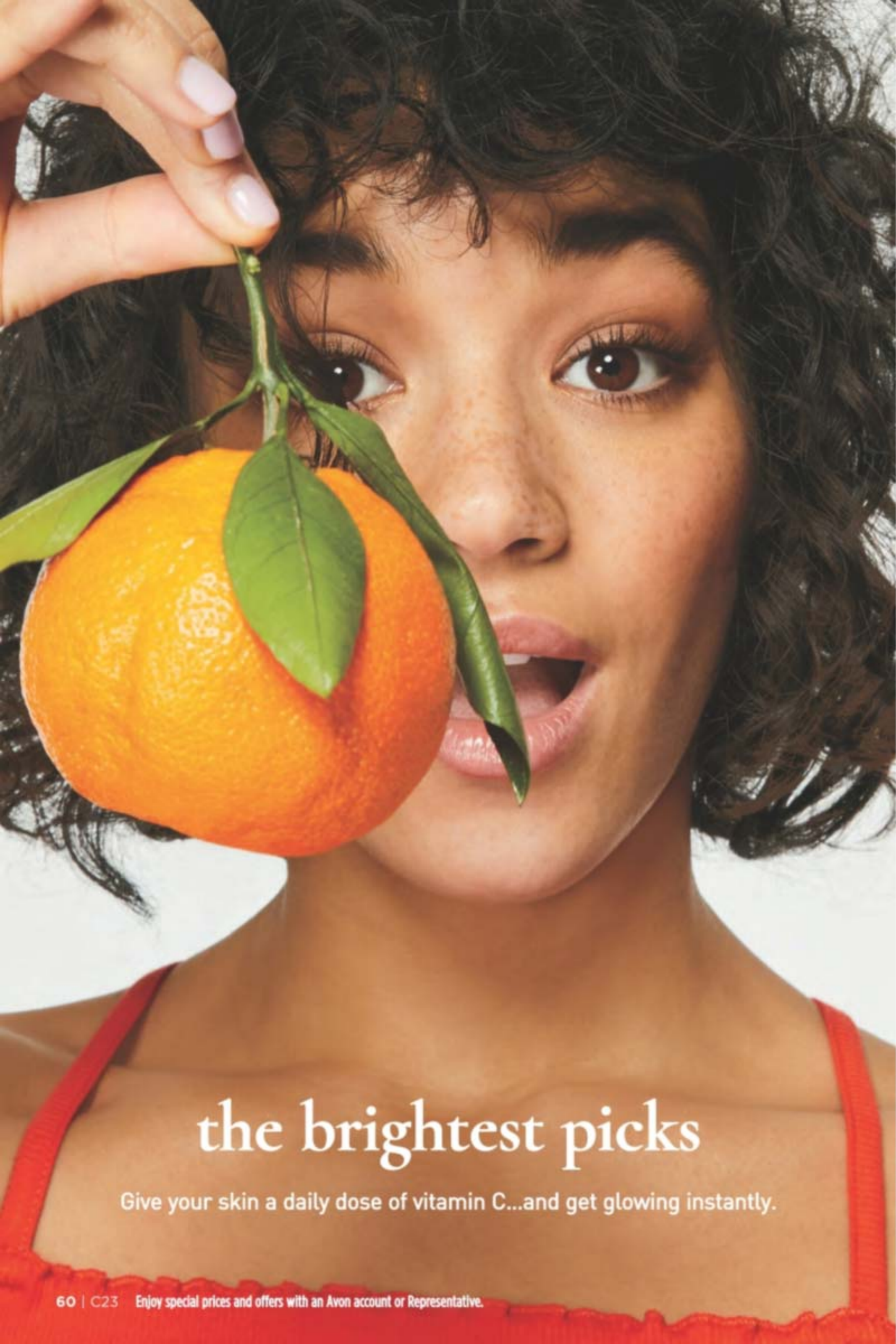


Isa Knox LXNEW Ultimate Rejuvenating Balm Stick
 With peony extract, plus a firming complex featuring castor, moringa and argan oils. Apply to forehead, eyes and neck, or anywhere you want extra care. .24 fl. oz. **267-593** reg. \$25
\$10 LOWEST PRICE EVER

Isa Knox LXNEW Platinum Sculpting Day Cream
 Infused with moisturizing hibiscus extract and ceramide. Visibly tightens facial contours. 1.7 fl. oz. **318-845** reg. \$50
\$20 LOWEST PRICE EVER

Isa Knox LXNEW Platinum Sculpting Eye Cream
 With hibiscus extract, panthenol and antioxidants. Leaves delicate eye area looking firmer, brighter and more defined. .84 fl. oz. **318-883** reg. \$50
\$20 LOWEST PRICE EVER

Isa Knox LXNEW Platinum Sculpting Night Cream
 With firming hibiscus extract, ceramide, squalane and shea butter. Skin looks firmer, smoother and more defined. 1.7 fl. oz. **318-850** reg. \$50
\$20 LOWEST PRICE EVER



the brightest picks

Give your skin a daily dose of vitamin C...and get glowing instantly.



Anew Vitamin C Brightening Eye Cream
Visibly reduces dark circles. Under-eye area looks brighter and more even-toned.
.5 fl. oz. 953-602 reg. \$34
\$22.99



Anew Vitamin C Exfoliating Peel Pads
With PHA and pineapple extract, vitamin C, panthenol and glycerin. Exfoliates and helps visibly brighten. Formulated without alcohol and fragrance. 4.3 fl. oz. 70 pads. 169-143 reg. \$28
\$20.99



Anew Vitamin C Antioxidant Lip Treatment
Nourishes lips with vitamins C and E.
.13 oz. net wt. 784-547 reg. \$14
\$7.99



Anew Vitamin C Brightening Serum
Skin is visibly energized and brightened with the power of 10% pure vitamin C.
1 fl. oz. 522-066 reg. \$44
\$25.99



Anew Vitamin C Overnight Radiant Mask
Revitalizing formula with niacinamide, shea butter and sunflower seed oil. Apply after cleansing, treating and moisturizing. 1.7 fl. oz. 157-086 reg. \$36
\$19.99



Anew Vitamin C Illuminating Priming Moisturizer
With skin-smoothing silicones. Use after Brightening Serum. Wear alone or under makeup. 1.7 fl. oz. 914-671 reg. \$34
\$22.99

EVERY BODY WANTS TO LOOK RADIANT

Vitamin C, plus other skin-nourishing ingredients, helps your skin look brighter and smoother all over.



Anew Vitamin C Nourishing Body Butter
With hydrating shea butter and niacinamide, plus vitamins C and E to help restore radiance. Fruity-floral and citrus scent. 7.8 fl. oz. 443-767 reg. \$32
\$19.99

Anew Vitamin C Glow Body Scrub
Sugar-based formula with pineapple and papaya enzymes and coffee seed extract exfoliates dry, dull skin. Citrus scent. 9 oz., net wt. 443-752 reg. \$36
\$19.99



Anew Vitamin C Illuminating Body Serum
Light-reflecting pigments leave skin looking luminous. 6.7 fl. oz. 157-071 reg. \$34
\$19.99



Anew Vitamin C Dry Body Oil
Soothing sunflower seed and jojoba oils help keep skin feeling supple. 3.4 fl. oz. 074-432 reg. \$34
\$19.99



Isa Knox Anew Solaire Everyday Face Protection Lotion Broad Spectrum SPF 50
1.7 fl. oz. 911-400 reg. \$32
\$24.99



Isa Knox Anew Solaire Active Face & Body Protection Lotion Broad Spectrum SPF 50
2.7 fl. oz. 154-948 reg. \$35
\$27.99



Isa Knox Anew Solaire Everyday Mineral Face Protection Cream Broad Spectrum SPF 50
Lightweight formula with zinc oxide. Suitable for sensitive skin. Water-resistant [40 minutes]. 1.7 fl. oz. 911-467 reg. \$32
\$24.99



92% of women believe it dramatically improves skin's overall appearance.*

Anew Power Serum
Visibly improves wrinkles, radiance, firmness and texture. Use AM and PM after cleansing, before moisturizing. 1 fl. oz. 838-047 reg. \$45
\$28.99

*Based on those who expressed an opinion in a consumer-perception study.



Isa Knox Anew Clinical Line Eraser with Retinol Targeted Treatment
For targeted lines and wrinkles (expression lines) such as around forehead and mouth. Use PM. .67 fl. oz. 925-159 reg. \$40

\$27.99

Isa Knox Anew Clinical Line Eraser with Retinol Treatment
Great for first-time retinol users. Use PM. 1 oz. net wt. 763-330 reg. \$45

\$29.99



100% showed clinical improvement of fine lines and wrinkles in one week, with increased results over time.

Isa Knox Anew Clinical Line Eraser with Retinol [1.0%] Advanced Retinol Serum

Our highest dose of retinol. Dramatically reduces the appearance of fine lines, wrinkles and dark spots. Use PM. 1 fl. oz. 390-751 reg. \$50

\$40.99



Isa Knox Anew Clinical Collagen Booster Eye Lift Pro Dual Eye System

In just 7 days, eye area looks lifted, firmer, tighter. With a peptide complex to help boost skin renewal. Gel, .33 fl. oz. Cream, .33 fl. oz. 961-406 reg. \$40

\$24.99



Isa Knox Anew Clinical Collagen Booster Rejuvenating Serum Ampoules

Powerful peptide blend boosts skin renewal. 60 capsulated single-use ampoules. .008 fl. oz. each. 803-077 reg. \$66

\$54.99



Isa Knox Anew Clinical Collagen Booster Microneedling Polisher

At-home alternative to micro-dermabrasion and micro-needling. Visibly diminishes pores, fine lines and wrinkles. 1.7 fl. oz. 798-592 reg. \$34

\$20.99



Isa Knox Anew Clinical Collagen Booster Firming Cream

With peptides that boost skin renewal to help restore youthful bounce. With moisturizing and skin-plumping niacinamide and squalane. Hygienic, airless pump. 1.7 fl. oz. 069-327 reg. \$45

\$29.99



Isa Knox Anew Clinical Revitalize & Reveal Intensive Peel
Intensive resurfacing peel similar to pro acid peels. With AHA and PHA. 1 fl. oz. 780-025 reg. \$45

\$29.99



Isa Knox Anew Clinical Revitalize & Reveal Resurfacing Lotion for Body
Exfoliates with gentle yet effective AHA lactic acid. Moisturizes with shea butter. 5 fl. oz. 390-785 reg. \$34

\$20.99



*In 6 out of 8 attributes tested over a 7-week period.

Isa Knox Anew Clinical Revitalize & Reveal Advanced Wrinkle Corrector

In just two weeks, wrinkles appear reduced. 1.7 fl. oz. 914-576 reg. \$40

\$27.99

Isa Knox Anew Clinical Revitalize & Reveal Extra Strength Retexturizing Peel

Results similar to a 35% pro glycolic peel.* 30 fragrance-free pads. 2" diam. 632-774 reg. \$40

\$27.99

Isa Knox Anew Clinical Revitalize & Reveal Resurfacing Expert Smoothing Fluid

79% as effective as a pro micro-dermabrasion without the same irritation. 1 fl. oz. 852-282 reg. \$44

\$29.99

100% agree:
skin looks smoother
and softer*

For dry,
irritated skin

**moisturizing
bomb toner**

A fast-absorbing,
milky-textured toner
clinically tested
to increase skin's
moisture levels in
arid, dry conditions.
6.7 fl. oz. **929-207**
reg. \$33

\$30



*Based on a consumer-perception study.



For dryness, loss
of elasticity and
firmness

**The True Cream -
Moisturizing Bomb**

26 hours
of long-lasting
moisture.*
1.68 fl. oz.
948-463
reg. \$42

\$38

*Based on a clinical study.



For dryness,
dullness and
uneven texture

**The True Cream -
Aqua Bomb**

70% increase in
hydration levels.*
1.68 fl. oz.
556-207
reg. \$42

\$38

*Based on a clinical study.



For dryness, loss
of elasticity and
firmness

**moisturizing
eye bomb**

Lightweight, refreshing
eye cream cools on
contact. Helps keep
eye area looking firm,
resilient and smooth.
.84 fl. oz. **445-478**
reg. \$53

\$48



For an extra boost
of hydration

**aqua bomb
hydrating toner**

Water-based. With
hyaluronic acid,
honeysuckle flower
extract and baobab
tree seed extract.
Use after cleansing,
before serum and
moisturizer.
6.7 fl. oz. **952-974**
reg. \$33

\$30



For dryness,
dullness and
uneven texture

**aqua bomb jelly
cleanser**

Jelly to foam.
Amino acids and
glycerin-based
cleansing agents
gently cleanse.
5.41 fl. oz.
445-353 reg. \$35

\$30



For dull, dry,
fatigued skin

**aqua bomb
sleeping mask**

Unique jelly-pudding
texture! Replenishes
with explosive
hydration for
smoother skin
and a healthy glow.
2.53 oz. net wt.
514-717
reg. \$42

\$38



Dominas Intensive Dark Spot Corrector

Two-step system for visibly clear, luminous skin.
Even-Tone Ampoule with vitamins C, E and enzymes
helps visibly enhance radiance. Anti-Dark Spot
Cream features vitamins C and B5 and ferulic acid.

Each, .23 fl. oz. **713-061**

\$30 the set



Dominas Retinol Youth Rejuvenating Serum

96% say deeper wrinkles look reduced.*
Also helps reduce the appearance of dark spots
and fine lines. Powered by retinol 0.05%, vitamin C
and niacinamide. 1 fl. oz. **713-004**

\$45

*Based on instrumental testing on 30 subjects at 2 weeks.



Dominas Multi Balm Special Double Set

Two all-in-one balm sticks contain an exclusive
Quinone Complex with CoQ10 and niacinamide to
help improve the look of wrinkles and dark spots.
With moisturizing shea butter and ceramide.

Each, 0.24 oz. net wt. **713-042**

\$47 the set

Reveal your
natural beauty

DOMINAS

A hydrating collection that focuses
on correcting the look of
dark spots and visibly improving
fine lines and wrinkles.



Dominas Dark Spot UV Defense Sunscreen SPF 50

Broad spectrum UVA/UVB protection.
Sheer, lightweight. With moisturizing niacinamide and
panthenol, plus peony and nutmeg extracts to visibly
enhance radiance. Formulated without PABA and
ethanol. 1.7 fl. oz. **713-057**

\$25

Avon Solutions Banishing Serum
An intensive serum with ingredients known to help improve the appearance of dark spots and uneven skin tone. 1 fl. oz. 507-905 reg. \$16
\$12.99

Avon Solutions Dramatic Firming Serum
This moisturizing serum contains effective anti-aging ingredients that help promote a more youthful appearance. 1 fl. oz. 507-871 reg. \$16
\$12.99

Avon Solutions Nurtura Serum
With skin-nourishing ingredients known to help combat dryness and flakiness, and help hydrate. 1 fl. oz. 507-924 reg. \$16
\$12.99



Solutions Dramatic Firming Cream
Skin looks and feels smoother. 1.7 fl. oz. 374-657 reg. \$14
\$9.99



Solutions Nurtura Replenishing Cream
Adds moisture to dry skin. 1.7 fl. oz. 908-263 reg. \$14
\$9.99



Solutions Banishing Cream Skin Discoloration Improver
Visibly improves skin tone. 1.7 fl. oz. 267-115 reg. \$14
\$9.99



Solutions Anti-Aging Cream
Moisturizing formula works to visibly smooth the appearance of fine lines and wrinkles. 1.7 fl. oz. 949-460 reg. \$14
\$9.99



OILY TO NORMAL SKIN
Isa Knox LXNEW Clean Soothing Whipped Oil Cleanser
Helps eliminate impurities and excess oil. 5 fl. oz. 718-025 reg. \$19
\$14.99



NORMAL, DRY, COMBINATION, OILY SKIN
Isa Knox LXNEW Clean 2-in-1 Exfoliating Cleansing Balm
Melts away makeup and impurities. Spatula included. 3.5 oz. net wt. 718-006 reg. \$32
\$25.99



NORMAL TO DRY SKIN
Isa Knox LXNEW Clean Nourishing Cream Cleanser
Removes impurities and makeup while restoring moisture. 5 fl. oz. 717-990 reg. \$14
\$10.99



NORMAL, DRY AND COMBINATION SKIN
Isa Knox LXNEW Clean Balancing Gel Cleanser
Gel to foam. Helps remove oil and impurities while rebalancing skin. 5 fl. oz. 718-010 reg. \$14
\$10.99



Anew Hydra Fusion De-Puffing Eye Serum
With caffeine and hyaluronic acid. Cooling ceramic tip. Instantly boosts hydration around eye area by 3X. .5 fl. oz. 137-737 reg. \$34
\$22.99



Anew Hydra Fusion Cleansing Micellar Water
No need to rinse off. 10.1 fl. oz. 139-380 reg. \$14
\$9.99



Anew Hydra Fusion 1.5% Hyaluronic Acid Serum
With three different molecular sizes of HA that reach multiple layers of skin's surface to visibly plump skin. 1 fl. oz. 290-390 reg. \$44
\$25.99



Anew Hydra Fusion Nighttime Facial Treatment
Hyaluronic acid. Shea butter beads. Visibly re-plumps skin with 3X more moisture. Relaxing rose scent. 1.7 oz. net wt. 139-429 reg. \$34
\$22.99



Anew Hydra Fusion Gel Cream
72 hours of long-lasting hydration. 1.7 oz. net wt. 266-893 reg. \$34
\$22.99

LOWEST
PRICES
EVER!



Farm Rx Green Goddess Facial Oil
100mg broad spectrum CBD. Suitable for sensitive skin. Rich in omega acids and vitamin E. Use AM/PM after cleansing and serum. Fragrance-free. 1 fl. oz. **934-733** reg. \$51
\$20.50
LOWEST PRICE EVER



Farm Rx Super Greens Cooling Gel
Lightweight moisturizer helps soothe and cool skin. Apply a thicker layer, after serum, as a mask to hydrate overnight as needed. 3.04 fl. oz. **354-227** reg. \$37
\$15
LOWEST PRICE EVER



Farm Rx Super Greens Multivitamin Moisture Cream
Locks in essential nourishing moisture. Use daily after cleansing, serums and treatments. 3.04 fl. oz. **314-141** reg. \$37
\$15
LOWEST PRICE EVER



Farm Rx Super Greens Refreshing Eye Cream
With nourishing Super Greens formula, plus cucumber extract. Hydrates and helps skin feel soothed. Green tea helps visibly de-puff. 1 fl. oz. **412-826** reg. \$32
\$12.50
LOWEST PRICE EVER



Farm Rx Super Greens Refreshing Gel Cleanser
With soothing aloe. Convenient pump. Eco-friendly packaging and glass bottle. Use AM/PM. 8.11 fl. oz. **913-049** reg. \$32
\$12.50 **LOWEST PRICE EVER**
Refill (not shown)
16.9 fl. oz. **913-053** reg. \$35
\$14 **LOWEST PRICE EVER**



why bakuchiol?

It's a gentle plant-based alternative to retinol that helps visibly reduce wrinkles and discolorations without the same irritation.

Farm Rx Bakuchiol Cream
Moisturizing cream visibly reduces wrinkles. Vegan. Hypoallergenic. Suitable for sensitive skin. 3.04 fl. oz. **004-044** reg. \$45

\$18
LOWEST PRICE EVER

Farm Rx Bakuchiol Serum
Lightweight oil-textured formula targets fine lines, wrinkles and dullness without irritation. 1 fl. oz. **247-417** reg. \$45

\$18
LOWEST PRICE EVER

Farm Rx Bakuchiol Eye Cream
Visibly reduces dark circles, fine lines and wrinkles without irritating the delicate eye area. 1 fl. oz. **565-834** reg. \$37

\$15
LOWEST PRICE EVER



Farm Rx Pineapple Plus Brightening Jelly Serum
Helps improve dull, dry skin and reduce the appearance of fine lines, wrinkles and pores. Skin looks radiant. 1 fl. oz. **027-440** reg. \$41
\$16.50 **LOWEST PRICE EVER**



Farm Rx Pineapple Plus Radiance Boosting Mask
With natural alpha hydroxy acid, plus an antioxidant-rich fruit complex to help skin look smoother and more radiant. 3 fl. oz. **456-266** reg. \$35
\$14 **LOWEST PRICE EVER**



Farm Rx Pineapple Plus Instant Glow Toner
Revitalizing toner helps visibly minimize pores. Use AM and PM, after cleansing. 5 fl. oz. **027-382** reg. \$25
\$9 **LOWEST PRICE EVER**



Rice Water Bright Rice Bran Gentle Exfoliating Cleanser
Daily scrub with organic rice bran powder, rice bran oil and hydrated silica. 10.1 fl. oz. **376-865** reg. \$19
\$14.99



Rice Water Bright Facial Cleansing Lotion
Helps brighten skin. Gently removes makeup and impurities. 6.7 fl. oz. **720-184** reg. \$14
\$10.99



Rice Water Bright Foaming Cleanser
Light whipped foam. With rice water and soapwort extract. Skin looks clear and bright. 10.1 fl. oz. **508-093** reg. \$19
\$14.99



Rice Water Bright Mild Cleansing Water
Removes impurities via the micellar method, so no need to rinse off! 16.9 fl. oz. **288-360** reg. \$18
\$13.99



Smaller Size! Rice Water Bright Foaming Cleanser
Light whipped foam. With rice water and soapwort extract. Convenient size for your medicine cabinet. 5 fl. oz. **478-479** reg. \$13
\$9.99



Rice Water Bright Light Facial Cleansing Oil
With jojoba oil and rice water extract, known to visibly brighten and moisturize skin. 5 fl. oz. **720-199** reg. \$20
\$15.99



Rice Water Bright Cleansing Facial Wipes
Great on the go. With rice extract to moisturize while cleansing. Removes eye makeup. 50 sheets. **508-108** reg. \$13
\$9.99



Rice Water Bright Facial Massage Cream
With rice water, vitamins A, B and E, ceramide and minerals. After cleansing, massage into skin 2-3 times a week. 6.7 fl. oz. **450-200** reg. \$25
\$19.99



Calendula Essential Moisture
Daily skin care for irritated and sensitive skin. With moisturizing calendula extract, a soothing herb complex, and the ultimate hydrator, hyaluronic acid.

Serum
A moisturizing and soothing serum that helps calm skin and enhance hydration. 1.35 fl. oz. **980-533** reg. \$15
\$11.99



The Face Shop Smile Foot Exfoliating Cream
A unique 2-in-1 daily foot exfoliating cream that removes dead skin cells as it soothes skin. With naturally moisturizing urea, which leaves feet feeling soft and hydrated. 4 fl. oz. **363-471** reg. \$15
\$11.99



The Face Shop Smile Foot Mask
Disposable foot mask, with naturally moisturizing urea, shea butter and collagen, for baby-soft feet! Refreshes with peppermint oil. Contains two masks, one for each foot. **535-957** reg. \$5
\$3.99

MAKEUP

Discover makeup that lets
the real you shine through.
Try before you buy with our
virtual makeover tool at
[Avon.com/category/makeup](https://www.avon.com/category/makeup).



fmg Precision Eye Brush

FREE

WITH ANY \$50 MAKEUP PURCHASE,
PAGES 76-97. \$15 VALUE.
LIMITED QUANTITIES.
Sold separately on page 97.



The Crème Shop
How Do Eye Look? - Ready Under Eye Patches For Depuffing & Brightening
 15 minutes is all it takes to hydrate, depuff and give eyes a vibrant look to take on the day with our fierce patches. With hyaluronic acid, vitamin C and caffeine to help hydrate and perk up puffy, fatigued eyes. .14 fl. oz. (1 pair). **717-880** reg. \$5
\$4



The Crème Shop
Be Juicy Skin Corgi Animated Face Mask
 Helps smooth rough, dry, dull skin. Niacinamide-infused sheet mask helps reduce the appearance of bumps, blemishes and hyper-pigmentation. Formulated without parabens and sulfates.
 Each, .88 oz. net wt. **723-475** reg. \$12
\$10 set of 3



THE FUN STARTS HERE

Welcome to the cosmic cutie-verse of **The Crème Shop**
 Discover the enchanting world of playful collections with the sweetest products at the sweetest prices to enhance the beauty you already have.
Cruelty-free
Paraben- and Sulfate-free
100% Inclusive



The Crème Shop
Vitamin C Gelee Mask Overnight Treatment
 Work on your glow while you catch some z's. A gelée mask fortified with vitamin C helps boost luminosity, correct discoloration and improve skin tone. Formulated without parabens and sulfates.
 2.36 oz. net wt. **768-590** reg. \$18
\$15



The Crème Shop
Juicy Makeup Removing Wipes - Narwhal
 Say good-bye to dirt, oil and waterproof makeup in a swipe! Rose water-infused wipes refresh, cleanse and hydrate your skin — with help from our adorable pal, Narwhal. Suitable for sensitive skin. Formulated without parabens, sulfates, phthalates and alcohol. 60 wipes. **423-557** reg. \$10
\$8



The Crème Shop
Go Bananas! Banana Powder
 Brightening and correcting setting powder helps eliminate dark circles, blurs imperfections. Smooths complexion without clogging pores. With grape seed, coconut and argan oils and camellia flower extract. Soft matte finish. Banana scented. Formulated without parabens. .53 oz. net wt. **717-875** reg. \$17
\$14



The Crème Shop
Brillian-C Glow Multi-Balm
 Easy-to-use stick balm triples as a moisturizer, primer or lip balm for a natural, dewy glow. With vitamin C and niacinamide. Helps minimize and smooth the appearance of pores, brightens the appearance of dark spots and clarifies the look of skin with each use. Formulated without parabens and sulfates. .3 oz. net wt. **723-399** reg. \$24
\$20



The Crème Shop
Aqua Cure Intense Hydration Multi-Balm
 Easy-to-use stick balm triples as a moisturizer, primer or lip balm. With hyaluronic acid, jojoba oil and aloe extract. Delivers a cooling effect with deep hydration and helps improve the look of skin with each use. Formulated without parabens and sulfates. .3 oz. net wt. **723-403** reg. \$24
\$20



The Crème Shop
Lip Oil Elixir
 Lightweight lip oil elixir creates a candy-like glaze effect. Keeps lips looking supple and moisturized with the perfect hint of tint. Infused with jojoba oil to help promote naturally soft lips. Glossy finish.
 .19 oz. net wt. reg. \$15
\$12

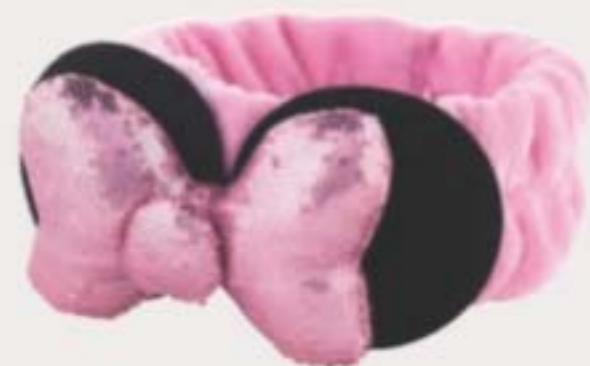
Auburn Era 719-313
Pink About Me 719-328
Twinkle 719-749
Flirty Fuchsia 719-370



The Crème Shop
Glossy 12 HR+ Lip Stain
 An ultra-moisturizing lip stain infused with sunflower seed oil and glycerin. Has a lightweight, glossy finish that lasts for 12+ hours. Leaves lips feeling soft and moisturized. .19 oz. net wt. reg. \$15
\$12

- | | | | |
|--------------------------|----------------------|-----------------------|----------------------|
| | | | |
| Wine and Dine
697-712 | New Flame
698-389 | Cherub
697-822 | Honeymoon
697-731 |
| | | | |
| Always Right
698-393 | Puppy Luv
697-951 | Heart Eyes
698-360 | Teddy
697-928 |

WE'VE GOT CHARACTER



The Crème Shop x Disney 3D Teddy Headband™ in "Princess Pink"
The perfect beauty accessory for a true Disney lover. Super-soft plush headband that holds your hair back and keeps it in place while you cleanse your face or apply cosmetics. One size. Polyester, polyurethane, latex. 7½" L x 3" W. Imported. **723-460** reg. \$17
\$14



The Crème Shop x Hello Kitty Perfect Pink Travel Case
The cutest pouch to pack all your essentials and beauty faves in! Sanrio's Hello Kitty character adds an adorable touch to this vibrant, travel-friendly case crafted with soft, vegan faux leather. Zipper closure. Easy to clean. Polyvinyl chloride, polyurethane, iron. 10" L x 3½" W x 7½" H. Imported. **717-928** reg. \$24
\$20



The Crème Shop x Disney Mickey Mouse and Minnie Mouse Travel Pouch
Add a little Disney magic to your day with the perfect travel pouch featuring none other than Mickey Mouse and Minnie Mouse, crafted in vegan faux leather. An adorable way to store and carry your everyday essentials, makeup and more. Zipper closure. Easy to clean. Polyvinyl chloride, polyester, iron. 7" L x 4" W x 5" H. Imported. **721-893** reg. \$27
\$22



The Crème Shop x Hello Kitty Macaron Lip Balm
Adorable Hello Kitty lip balm in a unique macaron shape. Creamy balm infused with soothing vitamin E in crowd-favorite flavors. Leaves your lips soft, moisturized and nourished. Formulated without parabens and sulfates. Each, .26 oz. net wt. reg. \$11
\$9 each



The Crème Shop x Hello Kitty Teddy Bear Macaron Lip Balm
Adorable Hello Kitty lip balm in a unique macaron shape. Creamy balm infused with soothing vitamin E in white chocolate flavor. Leaves your lips soft, moisturized and nourished. Formulated without parabens and sulfates. .26 oz. net wt. **717-966** reg. \$11
\$9



The Crème Shop x Hello Kitty Moisture Remedy Macaron Lip Balm
Adorable Hello Kitty lip balm in a unique macaron shape. Creamy balm infused with soothing vitamin E and shea butter in fresh and sweet strawberry rose latte flavor. Leaves your lips soft, moisturized and nourished. Formulated without parabens and sulfates. .26 oz. net wt. **717-932** reg. \$11
\$9



The Crème Shop x Keroppi Macaron Lip Balm
Sanrio's popular Keroppi character delivers the charm with this adorable lip balm in a unique macaron shape. Creamy balm infused with soothing vitamin E in green apple flavor. Leaves your lips soft, moisturized and nourished. Formulated without parabens and sulfates. .26 oz. net wt. **717-913** reg. \$11
\$9

The Crème Shop x Gudetama Handy Dandy Cream
Sanrio's eggcellent Gudetama character adds some cute tude to our hand cream. Made with shea butter and vitamin E to make your hands soft and perfect for holding! Fragrance notes of peach add a fruity touch. 1.69 oz. net wt. **721-908** reg. \$12
\$10

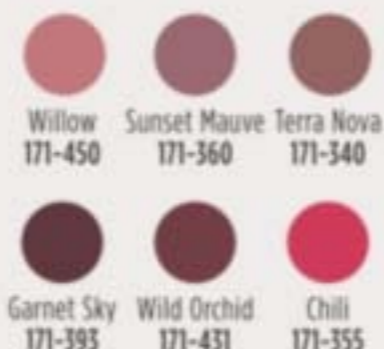




Featured shade:
fmg Glimmer Satin Lipstick In Celestial.



fmg Glimmer Matte Lipstick
Vivid color. Velvety feel. Featherlight non-drying formula with pomegranate extract. Buildable medium-to-full coverage. Formulated without parabens, talc, sulfates and phthalates.
.10 oz. net wt. reg. \$12
\$8.99



fmg Glimmer Birthday Balm Lip Crayon
Sheer, soft shine formula with non-GMO shea butter. Formulated without parabens and gluten. .1 oz. net wt. reg. \$15
\$11.99



fmg LOVE Lip Butter
Sheer, high-shine formula with cupuaçu seed butter, mango extract, and apricot kernel and olive fruit oils. Buildable coverage. Formulated without parabens, sulfates and phthalates.
.09 oz. net wt. reg. \$18
\$13.99



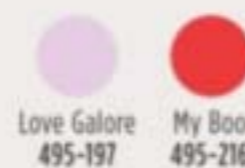
fmg Glimmer Satin Lipstick
Lightweight creamy formula with pomegranate extract. Buildable coverage. Satin finish. Formulated without parabens and sulfates.
.10 oz. net wt. reg. \$12
\$8.99



fmg Glimmer Lip Conditioner
Leaves dry, cracked lips feeling soft and smooth. With mango seed butter, vitamin E, and jojoba and sunflower seed oils. Formulated without parabens, sulfates, phthalates and talc.
.12 oz. net wt. ~~794-578~~
reg. \$12
\$8.99



TPSY Drunk Shiny Lip Oil
Glossy formula with jojoba, argan and castor oils. Formulated without parabens, sulfates, phthalates and talc. .13 oz. net wt. reg. \$17
\$13



TPSY Forever Lip Marker
Vibrant long-wearing formula with castor and sunflower oils. Matte finish. Formulated without parabens, sulfates and phthalates. .08 fl. oz. reg. \$17
\$13





shadow play

Featured shade: fmg Glimmer Multi Eyeshadow Quad in Mistress.
This image was generated using artificial intelligence.



fmg Glimmer Multi Eyeshadow Quad
Soft powder formula lasts all day. No messy fallout. Buildable coverage. Mix of satin, matte and shimmer finishes. Formulated without parabens and fragrance. .21 oz. total net wt. reg. \$15
\$11.99



fmg Glimmer Matte Eyeshadow Quad
Soft powder formula lasts all day. No messy fallout. Buildable coverage. All Matte finishes. Formulated without parabens and fragrance. .21 oz. total net wt. reg. \$15
\$11.99



fmg Cashmere Eyeshadow Palette
Long-wearing formula with crease-resistant wear. Satin, matte and sparkling finishes. Formulated without parabens, talc and fragrance. .63 oz. total net wt. reg. \$40
\$33



fmg CathyCat Nine Lives Precision Liquid Eyeliner
Slim-tip brush delivers a precise line of water- and sweat-resistant color that will not skip, tug or smudge. Formulated without parabens, sulfates, phthalates and talc. .068 fl. oz.
Blackest Black 800-829
reg. \$18
\$14.99



fmg CathyCat Shadow Gaze Matte Color Stick
Long-wearing formula will not budge or smudge. Buildable and blendable coverage. Matte finish. Formulated without parabens and fragrance. .0476 oz. net wt. reg. \$19
\$14.99





fmg Glimmer Cream Eyeliner
Long-wearing formula with soft sheen finish. Retractable. Formulated without parabens, sulfates and talc. .01 oz. net wt. reg. \$9
\$3.99

- | | | |
|--------------------------|-------------------------|---------------------------|
| | | |
| Emerald Green
334-332 | Starry Night
334-347 | Saturn Grey
334-328 |
| | | |
| Majestic Plum
334-313 | Cosmic Brown
334-351 | Blackest Black
334-366 |



fmg Glimmer Lipliner
Long-wearing creamy formula with vitamin E. Prevents feathering. Matte finish. Retractable. Formulated without parabens, sulfates and talc. .01 oz. net wt. reg. \$9
\$3.99

- | | | | |
|--------------------------|-------------------------|-------------------------|-------------------------|
| | | | |
| Honey Peach
327-721 | Lava Red
327-740 | Passion Red
327-650 | Red Brick
330-451 |
| | | | |
| Mystery Mauve
330-538 | Candy Apple
327-903 | Pink Bouquet
330-356 | Merlot
330-284 |
| | | | |
| Au Naturel
330-318 | Simply Spice
330-614 | Chocolate
330-667 | Perfect Plum
330-887 |



fmg Glimmer Diamond Eyeliner
Long-wearing formula with subtle sparkle. Retractable. Formulated without parabens, sulfates and talc. .01 oz. net wt. reg. \$9
\$3.99

- | | | |
|-----------------------------|-------------------------|------------------------|
| | | |
| Sterling
331-960 | Teal Sparkle
331-606 | Olive
331-940 |
| | | |
| Twilight Sparkle
331-553 | Sugar Plum
331-625 | Purple Rain
332-071 |
| | | |
| Smoky Diamond
331-280 | Brown
331-568 | Black Ice
331-610 |



fmg Glimmer Waterproof Eyeliner
Long-wearing, smudge- and waterproof formula. Retractable. Formulated without parabens, sulfates and talc. .01 oz. net wt. reg. \$9
\$3.99

- | | | | |
|--------------------------|-----------------------|----------------------------|--------------------------|
| | | | |
| Seafoam Green
334-241 | Smoky Grey
332-162 | Blackest Night
229-491 | Midnight Blue
332-158 |
| | | | |
| Blue Skies
334-237 | Raisin
332-200 | Brown Chocolate
332-124 | |



fmg Glimmer Brow Definer
Long-wearing formula with castor and coconut oils. Smudge-, transfer-, sweat- and waterproof. Retractable. Formulated without parabens, sulfates and talc. .01 oz. net wt. reg. \$9
\$3.99

- | | | |
|-------------------------|-----------------------|---------------------|
| | | |
| Light Blonde
331-109 | Blonde
331-113 | Tawny
331-128 |
| | | |
| Light Brown
331-151 | Dark Brown
331-147 | Brunette
331-242 |



fmg Glimmer Liquid Eyeliner
Quick-drying, long-lasting formula. Transfer-, sweat- and waterproof. Matte finish. Formulated without parabens, phthalates and fragrance. .037 fl. oz.
Blackest Black 354-380
reg. \$13
\$9.99



fmg Glimmer Always On Point Eyeliner
Built-in sharpener. Smudge- and waterproof. Matte finish. Formulated without parabens, sulfates and talc. .01 oz. net wt. reg. \$10
\$7.99

- | | |
|------------------|------------------------|
| | |
| Black
016-389 | Black Brown
016-446 |

high definition.
intense color.*

Create endless looks—
from sleek and sophisticated
to daring and dramatic!

Featured shades: fmg Glimmer Liquid Color Eyeliner Pen in Forest, Smoked and Indigo.

NEW

fmg Glimmer Liquid Color Eyeliner Pen

Felt-tip applicator glides on smoothly and provides precise application. Highly pigmented, lightweight formula is smudge-, transfer- and sweat-proof.* Formulated without parabens, talc, mineral oil, phthalates and fragrance. .04 fl. oz. reg. \$13

\$9.99 each

- | | | | |
|-------------------|-------------------|---------------------|-------------------|
| | | | |
| Forest
519-518 | Smoked
519-537 | Chestnut
519-503 | Indigo
519-499 |





bold brows & lush lashes



fmg Colors of LOVE Hi-Brow Tinted Brow Gel
24-hour water-resistant formula with heart-shaped fibers, clay and vitamin E. Won't clump, smudge or flake. Formulated without parabens, phthalates and fragrance. .11 fl. oz. reg. \$18

\$13.99



Blonde 792-499 Soft Brown 792-522 Medium Brown 792-537 Brown Black 792-556



fmg Colors of LOVE Hi-Brow Sculpting Brow Gel
Clear formula with aloe and hyaluronic acid. Flake-proof. Formulated without parabens, phthalates and fragrance. .11 fl. oz. **536-695** reg. \$18

\$13.99



fmg LOVE at 1st Lash Mascara
Lash-loving volumizing and lengthening fibers. With lycopene, olive oil and vitamin E. Won't clump, smudge or flake. Formulated without parabens and sulfates. .3 fl. oz. **Blackest Black 698-670** reg. \$18

\$13.99



fmg Cashmere Eyelash Primer
Nourishing formula keeps lashes looking healthy and strong with biotin and collagen. Maximizes the performance of any mascara for gorgeous, lush lashes. Formulated without parabens, sulfates and talc. .35 fl. oz. **324-369** reg. \$24

\$19



fmg Cashmere Ultimate Volume Mascara
Long-wearing formula with biotin and collagen. Glossy black finish. Won't budge, smudge or transfer. Formulated without parabens, sulfates and talc. .27 fl. oz. **Rich Black 153-736** reg. \$23

\$18



fmg Glimmer SuperShock Volumizing Mascara
Lash-building formula with plumping fibers. High-gloss finish. Won't clump, smudge or flake. Formulated without phthalates and fragrance. .338 fl. oz. **Black 698-829** reg. \$13

\$9.99



fmg Glimmer SuperExtend Nourishing Mascara
Long-wearing lengthening formula with vitamin E, argan and coconut oils. Won't clump, smudge or flake. Formulated without sulfates and talc. .237 fl. oz. **Black 698-848** **Brown Black 698-852** reg. \$13

\$9.99



fmg LOVE at 1st Lash Waterproof Mascara
Lash-loving, waterproof formula with volumizing and lengthening fibers. With Lashrez, olive oil and vitamin E. Won't clump, smudge or flake. Formulated without parabens and sulfates. .29 fl. oz. **Blackest Black 480-953** reg. \$18

\$13.99



fmg Glimmer Wash-Off Waterproof Mascara
Waterproof volume. Washes off easily with soap and water. Formulated without phthalates and fragrance. .21 oz. net wt. **Black 723-107** reg. \$12

\$8.99

way to glow.

Silky, liquid pearl formula with a soft-filter effect and hint of tint in sheer, flexible shades.

NEW

fmg Match Airbrush Retouch Tinted Primer
Helps soothe and even skin tone and provides a lit-from-within dewy complexion. With skin-caring ferulic acid, panthenol (provitamin B5) and niacinamide. Formulated without parabens, phthalates, fragrance and talc.
1 fl. oz. reg. \$21

\$15.99 each



fmg Match Dust Finishing Powder
Diffuses light, visibly blurs pores and controls shine. Blend of ultrafine rose quartz, ruby and tourmaline. With green tea extract. Matte finish. Formulated without talc, oil and parabens. .21 oz. net wt. reg. \$17

\$13.99



fmg Match Filter Serum Tint Foundation
Instantly hydrates, blurs flaws and evens tone. With hyaluronic acid, vitamin E and berry complex. Buildable coverage. Demi-matte finish. Formulated without talc, parabens and fragrance. .31 oz. net wt. reg. \$21

\$15.99



fmg Match Set Finishing Powder
Controls shine, visibly blurs pores and fine lines, and sets makeup. Mineral-infused formula. Matte finish. Formulated without talc, parabens and fragrance.

.22 oz. net wt. **932-472**
reg. \$19

\$14.99



fmg Match Prime Face Perfector
Flaw-blurring mattifying oil-free formula visibly minimizes pores and fine lines. Sheer coverage. Matte finish. Formulated without parabens. 1 fl. oz. **103-744**
reg. \$17

\$12.99



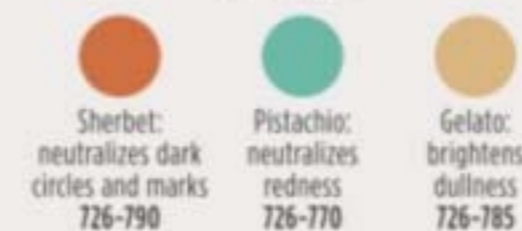
fmg Match Tint Radiant Tinted Moisturizer
Brightens skin tone, boosts moisture and blurs flaws. With passion fruit, chia and sunflower seed oils, and vitamin E and provitamin B5. Buildable coverage. Radiant finish. Formulated without parabens.
1 fl. oz. reg. \$14

\$10.99



fmg Match Wand Correcting Stick
Neutralizes unevenness, brightens and color corrects. Long-wearing formula with shea butter and vitamin E. Formulated without parabens, phthalates and sulfates.
.21 oz. net wt. reg. \$18

\$13.99





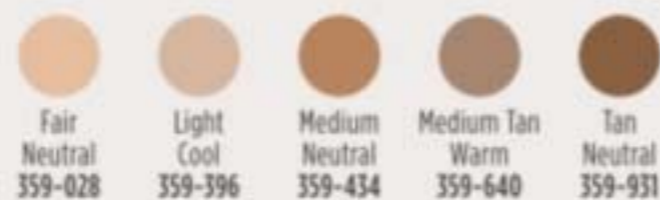
Featured shades:
fmg Cashmere Cream Concealer in Medium Neutral
and Cashmere 24 Hour Foundation in Cappuccino.



fmg Cashmere Cream Concealer

Long-wearing formula helps to camouflage dark circles, acne and uneven skin tone. With hyaluronic acid and collagen. Full-coverage. Matte finish. Formulated without parabens, phthalates, talc and fragrance. .21 oz. net wt. reg. \$17

\$13



fmg Cashmere 24 Hour Concealer*

24 hours of comfortable, breathable wear. Full coverage. Soft-focus matte finish. Visibly corrects dark circles and imperfections. With antioxidant botanical extracts. Water-resistant. Doe-foot applicator. Formulated without parabens, phthalates and sulfates. .20 fl. oz. reg. \$22

\$16



fmg Cashmere Under Eye Primer

Helps diminish the look of dark circles and fine lines. With caffeine, green tea extract and vegan collagen. Formulated without parabens, phthalates and fragrance.

.317 oz. net wt. **010-429** reg. \$24

\$19



fmg Cashmere Multi-Peptide Face Primer

Preps skin. Revitalizing ingredients help to smooth the appearance of fine lines and pores and visibly plump and strengthen the skin barrier. Sheer gel formula with Matrixyl 3000 peptide blend, hyaluronic acid, collagen and niacinamide. Formulated without parabens, talc and fragrance.

1 fl. oz. **739-284** reg. \$23

\$19



fmg Cashmere Compact Powder Foundation*

Shine-control formula can be used wet or dry. Buildable medium-to-full coverage. Matte finish. With antioxidant botanicals. Sponge applicator. Formulated without parabens, phthalates and sulfates. .40 oz. net wt. reg. \$36

\$30



\$18

fmg Cashmere Multi-Peptide Eyeshadow Primer

Keeps eyeshadow in place and intensifies the color. Skin-loving ingredients help to reduce the appearance of fine lines and visibly plump and strengthen the skin barrier. Sheer formula with Matrixyl 3000 peptide blend, hyaluronic acid, collagen and panthenol. Formulated without parabens and talc.

.31 oz. net wt. **906-385** reg. \$22

fmg Cashmere 24 Hour Foundation*

24 hours of comfortable, breathable wear. Full, flexible coverage. Soft-focus matte finish. Visibly blurs pores and fine lines for a smoother complexion. With antioxidant botanical extracts. Water-resistant.

Doe-foot applicator. Formulated without parabens, phthalates and sulfates. 1 fl. oz. reg. \$32

\$24.50





fmg Glimmer Be Blushed Cheek Color
Creamy formula with vitamin E. Buildable coverage. Dewy finish. Formulated without parabens, phthalates and fragrance.

.14 oz. net wt. reg. \$15

\$11.99



Icy Petal 022-854 Blushing Nude 022-911 Golden Rose 022-840 Tropical Peach 022-964 Crushed Berry 022-945



fmg Glimmer Powder Blush
Weightless formula with ultrafine pearl and vitamin E. Buildable coverage. Matte finish. Formulated without parabens, phthalates and fragrance.

.28 oz. net wt. reg. \$14

\$10.99



Petal Pink 618-209 Pink Passion 618-213



fmg Glimmer Lip & Cheek Stain
Highly pigmented, long-wearing gel formula. Brush-tip applicator. Transfer-proof. Formulated without parabens and fragrance.

.19 fl. oz. reg. \$17

\$12.99



Plumeria 628-851 Rosette 628-832



fmg Glimmer Powder Illuminator
Lightweight buildable formula with vitamin E. Radiant finish. Formulated without parabens, phthalates and fragrance.

.35 oz. net wt. reg. \$14

\$10.99



Rosé 463-628 Prosecco 905-580

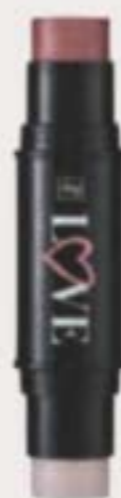


TPSY I Want to Highlight You Liquid Highlighter

Instant boost of moisture. With ultrafine pearls for a naturally radiant finish. Fragrance-free.

1.01 fl. oz. 615-965 reg. \$21

\$16



fmg Colors of LOVE Glow Balm Duo Illuminating Stick

Sheer formula with blend of pomegranate extract, mango and shea butter, vitamins E and C, and avocado oil. Soft, pearlescent finish. Formulated without parabens, phthalates and fragrance.

.28 oz. total net wt. 924-573 reg. \$22

\$16.99



fmg GLOKOLOR Hybrid Face Mist

Instant boost of moisture to refresh skin. With aloe vera, agave and algae extracts. Formulated without parabens and sulfates.

2.7 fl. oz. 787-599 reg. \$25

\$20

fmg GLOKOLOR Hybrid Face Primer

Softens the appearance of imperfections. With aloe vera, agave and algae extracts. Formulated without parabens and sulfates.

1 fl. oz. 787-637 reg. \$25

\$20

fmg GLOKOLOR Lip Serum Pencil

Refreshes and smooths lips. With peppermint and argan oils. Formulated without parabens and fragrance.

.06 oz. net wt. 787-508 reg. \$20

\$16

it's party nail season!

Let's raise a glass of bubbly and get fête-ready with the holidays' must-have mani.



NEW

LIMITED EDITION
fmg Glimmer Raise A Glass Nail Lacquer
 High-performance formula glides on smoothly and evenly for lasting color that does not chip. Helps keep nails strong and nourished. Formulated without phthalates, sulfates, parabens, toluene, formaldehyde and camphor. reg. \$12
\$8.99

-  Bubbly 032-540
-  Flushed 032-560



LIMITED EDITION
fmg Glimmer
Glitz A-Peel Nail Lacquer
 Glittery quick-dry formula stays on until you're ready to take it off. Just peel off for fuss-free removal. No harsh acetone or remover needed. Glossy finish. Formulated without parabens, toluene, formaldehyde and camphor. .4 fl. oz. reg. \$13
\$9.99

-  Best in Class 538-459
-  Newlywed 538-425
-  Leading Lady 538-430



LIMITED EDITION
fmg Glimmer
Matte-lic Crystals Nail Lacquer
 Innovative nail lacquer combines vibrant color with a matte crystal finish. Formulated without parabens, toluene, formaldehyde and camphor. .4 fl. oz. reg. \$12
\$7.99

-  Rose Citrine 256-164
-  Stolen Sapphire 256-092
-  Smoky Quartz 256-107



fmg Glimmer
Nail Lacquer
 Nail-strengthening, long-wearing, no-chip formula. Gel-like cushion texture. Formulated without parabens and phthalates. .4 fl. oz. reg. \$12
\$8.99

-  SATIN Lost Galaxy Plum 598-911
-  SATIN Black Hole Burgundy 018-286
-  SATIN Supernova Red 018-267
-  SATIN Night Sky Berry 602-658
-  SATIN High Magnitude Mauve 018-840
-  SATIN Lunar Tan 602-753
-  SATIN Cool Comet 602-830
-  SATIN Full Moon Flush 018-730
-  METALLIC Meteorite Rose 019-369
-  METALLIC Golden Galaxy 019-354



NEW
fmg Glimmer
Nourished Nail Cuticle Oil
 Nourishing treatment for dry, damaged cuticles. Fortified with safflower oil to help restore and condition nails and cuticles. Formulated without phthalates, sulfates, parabens, toluene, formaldehyde and camphor. .4 fl. oz. 612-894 reg. \$13
\$9.99



NEW
fmg Glimmer
Nail Air Dry Drops
 Need a fast finish? Accelerate your dry time with just a drop or two! Helps prevent smudges and nicks. Formulated without phthalates, sulfates, parabens, toluene, formaldehyde and camphor. .4 fl. oz. 612-913 reg. \$13
\$9.99



fmg Glimmer
Nail Base & Top Coat
 Two-in-one base and top coat primes and shields nails. Glossy finish. Formulated without parabens and phthalates. .4 fl. oz. 018-161 reg. \$12
\$8.99



fmg Glimmer
Nail Lacquer Eraser Pen
 For a clean and perfected mani. Won't dry out nails or cuticles. Formulated without parabens and phthalates. .135 fl. oz. 704-443 reg. \$12
\$8.99





fmg Unready Makeup Remover Cloth
Dual-sided. Reusable and travel-friendly. 100% polyester. 9 1/2" sq. Machine wash and dry. Imported. 230-176 reg. \$14
\$10.99



fmg Oil Rewind Roller Ball
Reusable 360° rotating volcanic-stone roller instantly absorbs oil and grease without disturbing makeup. 3" L x 1" W. Plastic handle, protective cap. Imported. 508-294 reg. \$18
\$13.99



fmg Set & Fix Spray
Controls oil and helps keep makeup smudge-proof. Non-greasy, non-sticky. Formulated without parabens, sulfates, phthalates and silicones. 1.7 fl. oz. 416-707 reg. \$15
\$9.99



fmg Express Makeup Brush Wash
Easily removes dirt, oil and makeup. With aloe vera and green tea extract. Formulated without alcohol and sulfates. 1 fl. oz. 141-368 reg. \$14
\$10.99



fmg Waterproof Lip & Eye Makeup Remover
Dual-layer oil and water remover leaves skin fresh and clean. With ether, silicone, hydrocarbon and ester oils. Formulated without mineral oil, tar, talc and parabens. 3.7 fl. oz. 352-243 reg. \$12
\$7.99



fmg Moisturizing Eye Makeup Remover Lotion
Cleans, refreshes and moisturizes as it whisks away eye makeup. Formulated without parabens, sulfates and phthalates. 2.5 fl. oz. 543-272 reg. \$8
\$5.99



Daily Beauty Tools Tweezers
Amp up your beauty routine with angled tweezers. Stainless steel. 3 1/2" L. 747-020 reg. \$4
\$2.99



fmg Flawless Complexion Sponge
Dual-ended: Allover makeup application rounded end, and contouring and concealing flat end. 2 1/2" L x 1 1/2" W. 100% PU, latex-free. 140-160 reg. \$10
\$7.99



fmg Kabuki Brush
Soft, angled brush for pressed or loose powder formulas. Retractable with protective cap. 3 3/4" L x 1" diam. Synthetic bristles. 732-370 reg. \$19
\$14.99



fmg Blush & Contour Brush
Dual-ended: Angled contour brush and tapered, oval blush brush. 7 1/4" L. Synthetic bristles. 933-259 reg. \$22
\$16.99



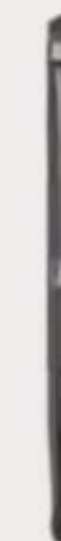
fmg Makeup Remover Wipes
With vitamin E and aloe, chamomile, cucumber, marshmallow root and oat extracts. Resealable pack of 24 wipes. Formulated without parabens, gluten, sulfates, phthalates and fragrance. 333-867 reg. \$10
\$7.99



fmg Vanity Organizer
Four compartments with two removable inside dividers, three outer pockets and lattice elastic straps. Folds for easy storage. 9 1/2" L x 6" W x 5" H. Polyester. Imported. 022-816 reg. \$30
\$23.99



fmg Complexion Blending Brush
Dual-ended: Rounded buffing foundation brush and concealer brush. 6 1/2" L. Synthetic bristles. 933-210 reg. \$23
\$17.99



fmg Precision Eye Brush
Dual-ended: Pointed pencil brush and angled eyeliner brush. 5 1/4" L. Synthetic bristles. 933-187 reg. \$15
\$11.99



fmg Eyeshadow Blending Brush
Dual-ended: Crease brush and all-over eyeshadow brush. 6" L. Synthetic bristles. 933-320 reg. \$15
\$11.99

FRAGRANCE

From alluring eau de parfums to spirited colognes, fresh florals to woody notes, each scent in our collection lets you express yourself.

Far Away
Hair and Body Mist
+ Body Lotion
FREE
WITH ANY \$50 FRAGRANCE PURCHASE,
PAGES 100-117. \$31 VALUE.
LIMITED QUANTITIES.
Sold separately on page 110.

AVON
Far Away

HAIR AND BODY MIST
MISTE POUR LE CORPS
100 mL / 3.4 FL. OZ.

AVON
Far Away

BODY LOTION
LOTION POUR LE CORPS
200 mL / 6.7 FL. OZ.

INTRODUCING AVON MOMENTS

A provocative new fragrance collection that evokes the powerful allure of unforgettable memories sweetened with the hopeful anticipation for a moment yet to be written.



Avon Moments Body Wash
Richly lathering formula leaves skin feeling cleansed and beautifully scented.
Each, 7.7 fl. oz.
Remember That Night 196-768
Out On A Limb 196-442
Day Dreamer 196-844
reg. \$17
\$12.99 each

ALL NEW

amber floral

**Out On A Limb
Eau de Toilette**

Believe in yourself. Take that leap of faith and go for bold with daring notes that unleash your spirit. 1.7 fl. oz. **196-112**
reg. \$32

\$24.99

Top: Spicy Cardamom, Leaf Green, Violet, Lilac
Mid: Jasmine, Honey Mimosa Flower, Freesia, Muguet
Dry: Tonka Bean, Musk, Powdery Vanilla

amber floral

**Remember That Night
Eau de Toilette**

It was the best night of your life! Memories come flooding back with each seductive note. 1.7 fl. oz. **196-662**
reg. \$32

\$24.99

Top: Bergamot, Sparkling Grapefruit, Orange, Pear
Mid: Opulent Jasmine, Neroli
Dry: Seductive Amber, Musk, Vanilla

fruity floral

**Day Dreamer
Eau de Toilette**

It's a beautiful day for a daydream. Explore your wildest fantasies with imaginative notes that bask in sweet reverie. 1.7 fl. oz. **196-772**
reg. \$32

\$24.99

Top: Quince, Grapefruit, Apple
Mid: Jasmine, Dewy Iris, Muguet, Freesia
Dry: Soft Musk, Amber, Cedarwood, Sandalwood



every
MOMENT
tells a story



a touch of vanilla.
a caress of roses.



NEW

amber floral

LYRD Vanilla Rose Eau de Parfum.
Warm familiar notes evoke sweet memories, wrapping you in a creamy, intoxicating embrace. 1.7 fl. oz. 094-020 reg. \$42

\$35

Top: Peach, Coconut, Rhubarb
Mid: Dewy Roses, Comforting Vanilla, Aquatic Marine Accord
Dry: Cashmere Musk, Amber, Cedarwood



LYRD Sultry Orchid Travel Spray
.3 fl. oz. 612-799
reg. \$18
\$14.99



amber floral
LYRD Sultry Orchid Eau de Parfum
Pink saffron, red orchid and warm amber.
1.7 fl. oz. 892-960
reg. \$42
\$35



fresh green floral
LYRD Coastal Lotus Eau de Parfum
Sparkling mandarin, island gardenia and lotus flower. 1.7 fl. oz. 869-906 reg. \$42
\$35



woody floral
LYRD Oud Rose Eau de Parfum
Saffron, rose and patchouli.
1.7 fl. oz. 954-412 reg. \$42
\$32



soft floral
LYRD Honeysuckle Blossom Eau de Parfum
Apple blossom, honeysuckle nectar and vanilla orchid. 1.7 fl. oz. 616-282 reg. \$30
\$24



LYRD Hair and Body Mist*
Each, 3.25 fl. oz.
Honeysuckle Blossom. 167-231
Peony Rosé Peony petals, pink currant and sheer musk. 167-212 reg. \$18
\$14.99 each

**IT'S YOUR LIFE,
SHINE RADIANTLY.**

Get that sunny feeling with this uplifting scent of optimism and endless energy, bursting with brilliance.

NEW

fruity floral

Live Out Loud Solar Vibes
Eau de Parfum

1.7 fl. oz. 835-822 reg. \$40
\$30



Top: Vibrant Bergamot, Cardamom
Mid: Coconut Water, Frangipani,
Ylang-Ylang, Orange Flower
Dry: Fluffy Marshmallow, Vanilla,
Cedarwood

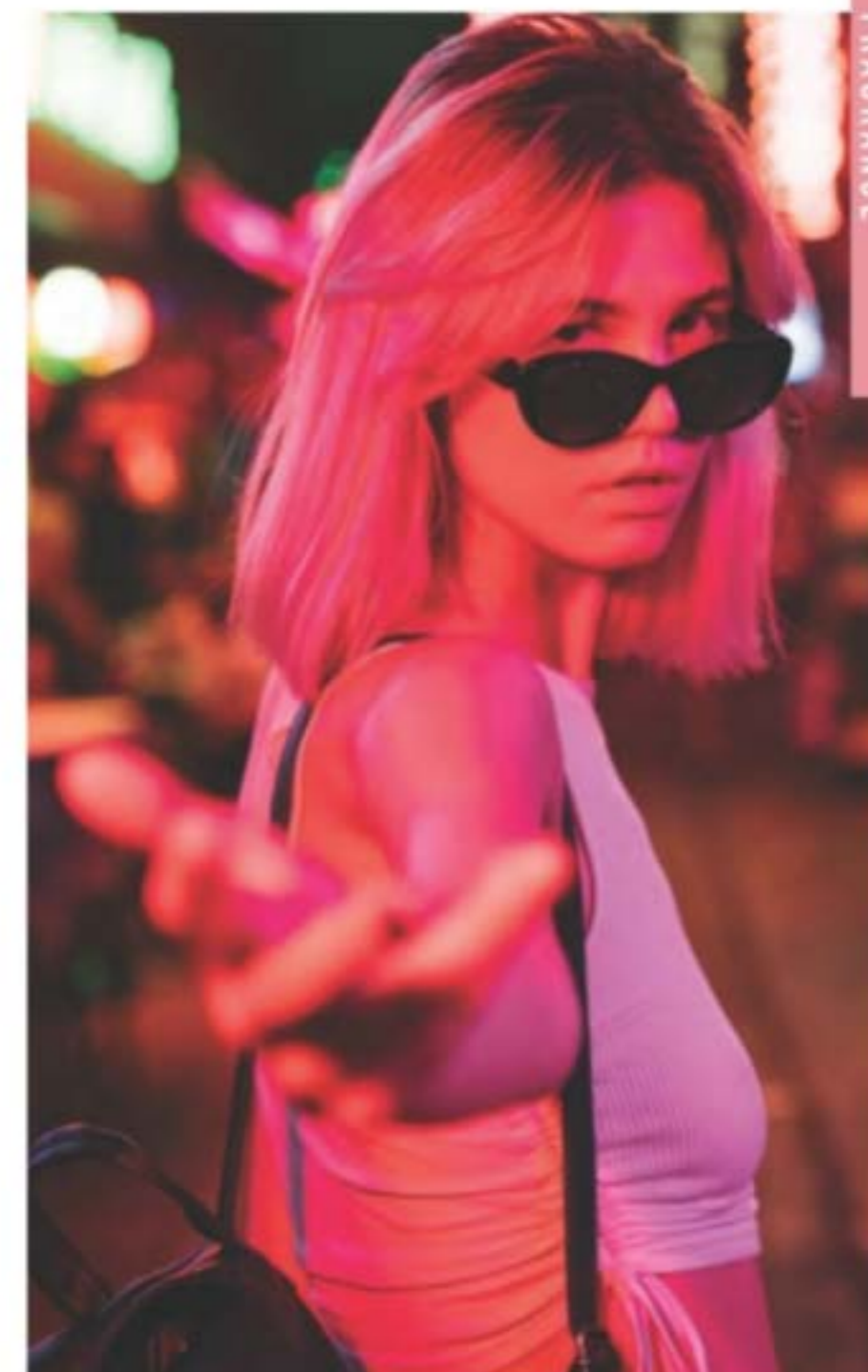


fruity floral

Live Out Loud #4U
Eau de Parfum

Mandarin, peach blossom and vanilla.
1.7 fl. oz. 735-968
reg. \$40

\$30



FRAGRANCE



fruity floral

Live Out Loud
Eau de Parfum

Strawberry, mimosa and vanilla. 1.7 fl. oz.
142-000 reg. \$40

\$30



soft floral

Today Eau de Parfum

Hibiscus, silk musk and butterfly blossoms.

1.7 fl. oz.

325-920

reg. \$40

\$30

a kiss of the Italian coast

BACK BY POPULAR DEMAND!

fruity floral

Far Away Amalfi Eau de Parfum
1.7 fl. oz. 032-502
reg. \$25
\$19.99

Top: Italian Bergamot, Crisp Pear, Coconut Flakes
Mid: Orange Flower, Coastal Tuberose, Jasmine Sambac
Dry: Vanilla, Sensual Musks, Creamy Cashmere Woods



LIMITED EDITION
fruity floral

Far Away Escape Eau de Parfum
Anjou pear, gardenia flower and cashmere wood. 1.7 fl. oz.
473-993 reg. \$25
\$19.99



amber floral

Far Away Eau de Parfum
Freesia, jasmine and amber. 1.7 fl. oz. 685-712
reg. \$25
\$19.99



fruity floral

Far Away Infinity Eau de Parfum
Bergamot, jasmine sambac and sandalwood. 1.7 fl. oz. 318-481
reg. \$25
\$19.99



amber floral

Far Away Gold Eau de Parfum
Ylang-ylang, jasmine and vanilla. 1.7 fl. oz. 685-727
reg. \$25
\$19.99

fruity floral
Far Away Bali Eau de Parfum
Grapefruit, salted tuberose and amber. 1.7 fl. oz. 451-389 reg. \$25
\$19.99





fruity floral

Rare Amethyst Eau de Parfum
Plum, violet and sandalwood.
1.7 fl. oz. 933-062 reg. \$25
\$19.99



amber floral

Rare Gold Eau de Parfum
Mandarin zest, ylang-ylang and amber.
1.7 fl. oz. 933-115 reg. \$25
\$19.99



soft floral

Rare Pearls Eau de Parfum
Magnolia, white pepper and rosewood.
1.7 fl. oz. 761-615 reg. \$25
\$19.99



amber floral

Imari Seduction Eau de Toilette
Wild berries, purple orchid and patchouli.
1.7 fl. oz. 452-897 reg. \$25
\$19.99



woody floral

Imari Amor Eau de Parfum
Black currant, orris and warm musk.
1.7 fl. oz. 762-573 reg. \$25
\$19.99



amber floral

Imari Eau de Toilette
Bergamot, jasmine and amber.
1.7 fl. oz. 871-496 reg. \$25
\$19.99



serene. divine. elegant.

fresh green floral

Haiku Eau de Parfum
Japanese yuzu, delicate
muguet and blonde woods.
1.7 fl. oz. 521-170
reg. \$25
\$19.99



woody floral

Haiku Sunrise Eau de Parfum
Coconut water, rhubarb and
cedarwood. 1.7 fl. oz. 091-500
reg. \$25
\$19.99



fresh green floral

Haiku Kyoto Flower Eau de Parfum
Violet leaf, white peony and cotton
musk. 1.7 fl. oz. 144-352 reg. \$25
\$19.99



fresh green floral

Haiku Reflection Eau de Parfum
Water accord, acacia blossom and
amber wood. 1.7 fl. oz. 617-657
reg. \$25
\$19.99

layering essentials

Rare Pearls Hair and Body Mist
3.25 fl. oz.
572-851
reg. \$18
\$14.99



Rare Pearls Hand Cream
2.5 fl. oz.
364-827
reg. \$7
\$5.99



Rare Pearls Body Lotion
6.7 fl. oz.
082-915
reg. \$13
\$9.99



Haiku Hair and Body Mist
3.25 fl. oz. 572-574
reg. \$18
\$14.99



Haiku Hand Cream
2.5 fl. oz. 364-808 reg. \$7
\$5.99



Far Away Hand Cream
2.5 fl. oz.
364-850
reg. \$7
\$5.99



Far Away Hair and Body Mist
3.25 fl. oz.
572-536
reg. \$18
\$14.99



Haiku Body Lotion
6.7 fl. oz. 447-820
reg. \$13
\$9.99



Haiku Body Scrub & Wash
6.7 fl. oz.
143-208
reg. \$15
\$10.99



Far Away Body Scrub & Wash
6.7 fl. oz.
143-360
reg. \$15
\$10.99



Far Away Body Lotion
6.7 fl. oz.
082-881
reg. \$13
\$9.99



amber floral
Candid Cologne
 Bergamot, tuberose
 and patchouli.
 1.7 fl. oz.
 038-295
 reg. \$18
\$14.99



soft floral
Dreamlife Cologne
 Mimosa flower,
 rose and amber.
 1.7 fl. oz.
 236-227
 reg. \$18
\$14.99



woody floral
Night Magic Cologne
 Neroli, jasmine
 and musk.
 1.7 fl. oz.
 168-682
 reg. \$18
\$14.99



soft floral
Odyssey Cologne
 Tuberose,
 ylang-ylang and
 oakmoss. 1.7 fl. oz.
 900-391
 reg. \$18
\$14.99



soft floral
**Sweet Honesty
 Cologne**
 Lily of the valley, rose
 and cedarwood.
 1.7 fl. oz.
 901-861
 reg. \$18
\$14.99



soft floral
Timeless Cologne
 Cardamom,
 jasmine and
 patchouli.
 1.7 fl. oz.
 037-930
 reg. \$18
\$14.99



soft floral
Topaze Cologne
 Jasmine, rose and
 sheer musk.
 1.7 fl. oz.
 735-217
 reg. \$18
\$14.99



fresh green floral
Free O₂ Eau de Toilette
 White peach tea,
 honeysuckle and musk.
 1.7 fl. oz.
 490-840
 reg. \$18
\$14.99



unique
 scents.
 soft
 skin.

NEW

LIMITED EDITION
Perfumed Skin Softener
 Leaves skin soft, silky and
 scented. Each, 5 fl. oz. reg. \$7
\$4.99 each

fresh green floral
Haiku Harmony
 Find harmonious happiness
 with balanced notes of
 grapefruit, violet and musk.
 735-547

woody floral
Imari Sequins
 Bedazzle with shimmering
 notes of freesia, guaiac wood
 and vanilla.
 745-855

woody floral
Candid Embrace
 Feel a warm caress with
 welcoming notes of pink
 pepper, lilac and sandalwood.
 751-948

fresh green floral
Sweet Honesty Innocence
 Capture the purity of sweet
 innocence with flirty notes of
 orange blossom, green apple
 and musk.
 759-729

fruity floral
Night Magic Luna Blooms
 Entice the night with
 blooming notes of pear,
 lychee and muguet.
 745-946

amber floral
Far Away Journeys
 Find your sense of adventure
 with fascinating notes of
 ginger, orchid and cedarwood.
 735-532

fresh green floral
Timeless Enchantments
 Exude classic charm and
 delight with enduring notes
 of bergamot, peony and
 sandalwood.
 751-751

amber floral
Odyssey Untamed
 Explore the unexpected with
 adventurous notes of lemon,
 freesia and amber.
 755-924



fresh aromatic
Black Suede Eau de Toilette
 Bergamot, leather and oakmoss.
 3.4 fl. oz. 908-703 reg. \$24
\$17.99



the call
 of the wild

fresh aromatic
Wild Country Cologne
 Lavender, coriander seed
 and sandalwood.
 3 fl. oz. 086-466 reg. \$24
\$17.99
 Packaging may vary.



Black Suede Bar Soap
 3.17 oz. net wt.
 495-565 reg. \$6
\$3.99



**Black Suede
 Hair & Body Wash**
 5 fl. oz. 230-200 reg. \$8
\$5.99



**Wild Country
 Aftershave Splash**
 4 fl. oz. 366-432
 reg. \$16
\$12.99



**Wild Country
 Hair & Body Wash**
 5 fl. oz. 215-188
 reg. \$8
\$5.99



**Wild Country
 Bar Soap**
 3.17 oz. net wt. 495-570
 reg. \$6
\$3.99

lead with confidence



fresh aromatic

Perceive Cologne

Citrus, sage and cedarwood.
3.4 fl. oz. 194-550 reg. \$30

\$22.99



woody fougère

Studio 1886 Gentleman Eau de Toilette

Geranium, black pepper and
cedarwood. 1.7 fl. oz. 708-750 reg. \$50

\$39



**Studio 1886 Gentleman
Aftershave Lotion**

6.7 fl. oz. 708-927 reg. \$24

\$17.99



woody fougère

Mesmerize Black Eau de Toilette

Pepper, nutmeg and tonka bean. 3.4 fl. oz.
305-667 reg. \$30

\$22.99



fresh aromatic

Mesmerize Cologne

Bergamot, cardamom and amber.
3.4 fl. oz. 871-458 reg. \$30

\$22.99



BACK BY
POPULAR DEMAND!

fresh aromatic

Alpha Eau de Toilette

3.4 fl. oz. 088-598 reg. \$35

\$26.99

Top: Italian Bergamot, Sparkling Verbena, Juniper Berries
Mid: Spiced Cardamom, Basil, Nutmeg
Dry: Brandy, Cedarwood, Olibanum

Pampering oils. Luxurious lotions. Revitalizing washes. We keep every body soft, smooth and refreshed so you can show more skin.

NEW
ORGANIST
Rice Water

See **lustrous hair** and **luminous skin** with rice water, formulated with rice extract and rice bran oil.



Nourishing Oil Layer

Hydrating Essence Layer

AVON
ORGANIST
RICE WATER
EAU DE RIZ
— BLEND / MÉLANGE —

**MOISTURE REPLENISH
HAIR MIST**
**BRUINE CAPILLAIRE
REHYDRATANTE**
FOR DRY HAIR
POUR CHEVEUX SECS

80 mL / 2.7 fl. oz. U.S.

Moisture Replenish Hair Mist
Two-layer mist: a hydrating essence plus five plant oils, including jojoba and argan oil, for deep moisturization.
2.7 fl. oz. **381-985**
reg. \$24
\$18.99



NEW
ORGANIST
Rice Water

WHY RICE WATER?

- A time-honored Asian beauty secret
- Rich in amino acids, vitamins B and E and minerals
- Helps reduce breakage and split ends to smooth hair, and improve shine and manageability

help nourish & moisturize dry, damaged hair with the power of rice water

CLEANSE

Damage Care Shampoo

With biotin, ceramide, protein and 17 amino acids to deeply nourish each strand, restoring strength and resilience. Enriching rice water helps transform dry hair into a silky mane. 16.9 fl. oz.

381-803 reg. \$19

\$14.99

TREAT

Damage Care Treatment

Perfect for hair in need of hydration and repair. Biotin, protein and 17 amino acids help nourish each strand from within. Hyaluronic acid and collagen help smooth hair for resilience and softness. 6.7 fl. oz.

381-860 reg. \$19

\$14.99

REPLENISH

Moisture Replenish Hair Mist

Two-layer mist: a hydrating essence plus five plant oils, including jojoba and argan oil, for deep moisturization. Rice water, biotin, ceramide, protein and amino acids help revitalize, nourish and soften dry, damaged hair. Shake well before use.

Use on damp or dry hair.

Fresh floral scent. 2.7 fl. oz.

381-985 reg. \$24

\$18.99

Nourishing Oil Layer

Hydrating Essence Layer



FOR BODY

With antioxidants ideal for helping to moisturize dry skin

CLEANSE

Nourishing Body Wash

With soap derived from olive oil. Contains panthenol and hyaluronic acid. Helps skin appear soft and moisturized. 16.9 fl. oz.

382-097 reg. \$19

\$14.99

NOURISH

Nourishing Body Milk

With plant-derived moisturizer and plant-derived oil (squalane) to help hydrate and nourish dry skin. Easily absorbed. Nongreasy.

10 fl. oz. 382-336

reg. \$19

\$14.99

hair & scalp look stronger with the natural goodness of rosemary

1

CLEANSE

Organist Rosemary Mint Strengthening Shampoo + Conditioner

With rosemary and biotin, to help to keep your scalp and hair looking healthy. Refreshing, cooling peppermint helps your scalp feel revitalized.

Each, 16.9 fl. oz.

Shampoo
542-974

Conditioner
542-993
reg. \$19

\$14.99 each



2

THICKEN

Organist Rosemary Mint Scalp Strengthening Tonic

With rosemary, mint, biotin and caffeine. Scalp feels nourished and revitalized with a cooling sensation. Hair looks fuller, thicker, stronger.

5 fl. oz.

544-427 reg. \$24

\$18.99



3

NOURISH

Organist Rosemary Mint Hair Strengthening Oil

Hair feels fortified, nourished and refreshed. 2 fl. oz.

542-845 reg. \$24

\$18.99



OVER
80%
AGREED
HAIR FELT
STRONGER*



strengthen
your **BODY's**
moisture barrier

Gua Sha Scalp Massager

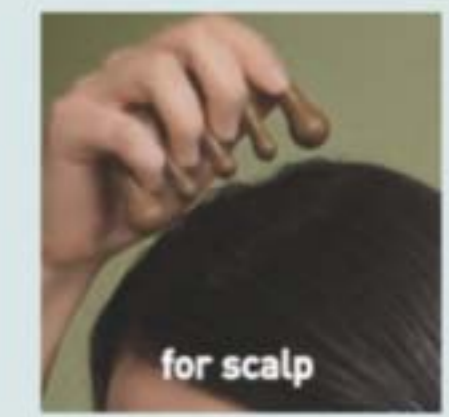
For scalp, neck and body. Helps improve circulation for visibly strong, healthy hair. 100% wood.

542-960 reg. \$24

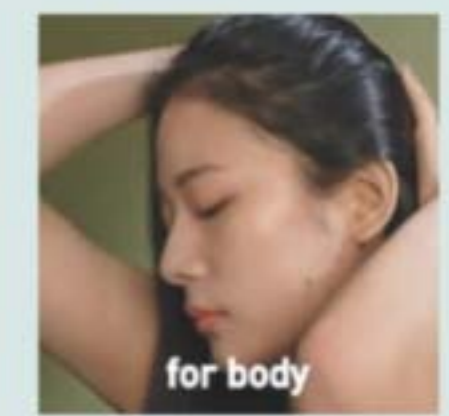
\$18.99



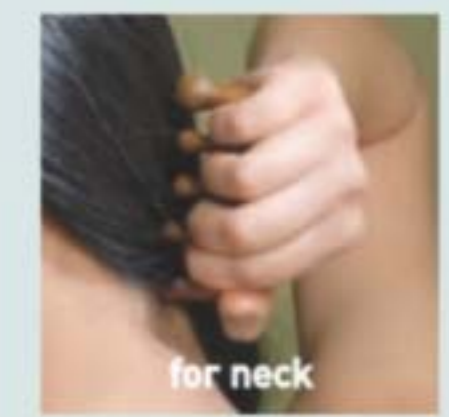
FOR HAIR & BODY



for scalp



for body



for neck



Organist Rosemary Mint Body Wash

Invigorate your senses. Formulated with AHA/BHA/PHA and panthenol.

16.9 fl. oz.

544-446 reg. \$19

\$14.99

*Evaluated by Elead (HUT Study), Organist Rosemary Mint Hair Strengthening Oil when used with Organist Rosemary Mint Shampoo, Conditioner, Tonic.

ORGANIST
Botanical Castile Soap

Daily vegan washes for face and body infused with soap made from olive oil and formulated without parabens, silicone oil or sulfates. Leaves skin feeling refreshed, revitalized and luxuriously moisturized while it cleanses.

FOR OILY SKIN

Tea Tree & AHA BHA

Controls oil as it deeply cleanses and refreshes. Fresh herbal scent. 16.2 fl. oz. **348-115** reg. \$13

\$10.99

FOR DRY SKIN

Rose Water & Hyaluronic Acid

Low-pH formula helps replenish soothing moisture. Crisp floral scent. 16.2 fl. oz. **348-100** reg. \$13

\$10.99



Organist Apple Cider Vinegar Body Wash
For normal to oily skin. It blends apple cider vinegar extract with panthenol so skin feels refreshed and nourished. 16.9 fl. oz. **482-740** reg. \$19
\$14.99

Organist Apple Cider Vinegar Exfoliating Body Scrub
With panthenol and AHA/BHA/PHA, it gently exfoliates dead skin cells to help skin look and feel refreshed all over. 6.7 fl. oz. **482-846** reg. \$19
\$14.99



ORGANIST
Apple Cider Vinegar

Cleanse, clarify & hydrate with exfoliating apple cider vinegar extract, detoxifying ginger, organic lemon water, cooling menthol and enriching biotin. Formulated without silicone oil or sulfates.

1

Clarifying Shampoo
For oily hair. Helps clarify and nourish scalp and hair for a healthy-looking shine while it cleanses. 16.9 fl. oz. **482-650** reg. \$19

Clarifying Conditioner
Great for oily, dull hair. Helps clarify and nourish scalp and hair for a healthy-looking shine. 16.9 fl. oz. **482-664** reg. \$19

\$14.99 each

3

Scalp Tonic
Leave-on scalp tonic made with a blend of 10 natural herbs. Helps dissolve oily buildup and revitalizes the scalp. 5 fl. oz. **482-721** reg. \$24
\$18.99

2

Clarifying Water Treatment
Rinse-out treatment infused with collagen and hyaluronic acid. Formulated to clarify hair and help it look naturally soft and flowing instantly with a healthy shine. 6 fl. oz. **482-717** reg. \$19
\$14.99





Original Bonus-Size Bath Oil
25 fl. oz.
037-690
reg. \$30
\$24.99



Original Bath Oil
Hydrates during or after bath or shower.
16.9 fl. oz.
439-040
reg. \$24
\$17.99



Original Bath Oil Spray
Locks in hydration.
5 fl. oz.
824-580
reg. \$19
\$12.99



Original Shower Gel
Gently cleanses and hydrates.
5 fl. oz.
914-580
reg. \$8
\$4.99



Soft & Sensual Gelled Body Oil
Dries to a silky finish.
6.76 fl. oz. 908-244
reg. \$14

\$10.99

Soft & Sensual Bath Oil
Hydrates during or after bath or shower. 16.9 fl. oz. 504-614
reg. \$24

\$17.99

Soft & Sensual Body Lotion
48-hour moisture.
11.8 fl. oz. 400-720
reg. \$15

\$11.99

Soft & Sensual Replenishing Hand Cream
24+ hours of moisturization.
3.4 fl. oz. 905-355
reg. \$7

\$5.99

Soft & Sensual Shower Gel
Gently cleanses and hydrates. 5 fl. oz. 914-710
reg. \$8

\$4.99



Original Gelled Body Oil
Dries to a silky finish.
6.76 fl. oz.
939-500
reg. \$14
\$10.99



Original Replenishing Hand Cream
24+ hours of moisturization.
3.4 fl. oz.
519-690
reg. \$7
\$5.99



Original Beauty Bar Soap
Skin-nourishing. Creamy lather. Suitable for daily use on face, body and hands.
3.17 oz. net wt.
543-110
reg. \$4.50
\$3.49

Soft & Sensual Bonus-Size Bath Oil
Hydrates during or after bath or shower. 25 fl. oz.
862-920
reg. \$30
\$24.99



Soft & Sensual Beauty Bar Soap
Skin-nourishing. Creamy lather. Suitable for daily use on face, body and hands. 3.17 oz. net wt.
543-215
reg. \$4.50
\$3.49



Original Body Lotion
48-hour moisture.
11.8 fl. oz.
761-634
reg. \$15
\$11.99



Original Bonus-Size Body Lotion
48-hour moisture.
33.8 fl. oz.
825-351
reg. \$26
\$17.99



Original Bonus-Size Shower Gel
Gently cleanses and hydrates.
33.8 fl. oz.
433-444
reg. \$18
\$14.49



Soft & Sensual Bonus-Size Body Lotion
48-hour moisture.
33.8 fl. oz.
825-643
reg. \$26
\$17.99



Soft & Sensual Bonus-Size Shower Gel
Gently cleanses and hydrates.
33.8 fl. oz.
018-142
reg. \$18
\$14.49



Radiant Moisture Shower Gel
Gently cleanses and hydrates.
5 fl. oz. 410-914
reg. \$8
\$4.99

Radiant Moisture Bonus-Size Shower Gel
Gently cleanses and hydrates.
33.8 fl. oz. 433-922
reg. \$18
\$14.49



Radiant Moisture Bonus-Size Bath Oil
Hydrates during or after bath or shower.
25 fl. oz. 249-788
reg. \$30
\$24.99




Skin So Soft Botanical Essence Bath Oil
16.2 fl. oz.
027-253
reg. \$31
\$24.99



Radiant Moisture Replenishing Hand Cream
24+ hours of moisturization.
3.4 fl. oz. 892-650
reg. \$7
\$5.99



Radiant Moisture Bonus-Size Body Lotion
48 hours of moisture.
33.8 fl. oz. 826-343
reg. \$26
\$17.99



Comforting Shea Bath Oil
Locks in moisture.
16.9 fl. oz. 015-071
reg. \$24
\$17.99



Skin So Soft Pure Nature Revitalizing Shower Gel
96% naturally derived.
Richly lathering gel.
12 fl. oz. 415-170
reg. \$20
\$15.99

Revitalizing In-Shower Body Lotion
95% naturally derived.
Hydrating and softening lotion.
Apply onto wet skin after shower or bath. 8 fl. oz.
633-857 reg. \$21
\$16.49

Revitalizing Body Cream
94% naturally derived. Smooth on moisturizing cream after bath or shower. 12 fl. oz.
629-767 reg. \$21
\$16.49



Shower Gel and Body Cream bottles: 95% post-consumer recycled material, excluding cap.
Body Lotion tube: 55% post-consumer recycled material, excluding cap.

Supreme Nourishment Enriching Coconut Oil Wash
With nourishing vitamin E.
11.8 fl. oz. 366-380
reg. \$15
\$12.99



Supreme Nourishment Enriching Coconut Oil Milk Lotion
Leaves skin feeling silky soft.
11.8 fl. oz. 419-835
reg. \$17
\$11.99



Supreme Nourishment Bonus-Size Body Lotion
48 hours of moisture.
33.8 fl. oz. 826-817
reg. \$26
\$17.99





Skin So Soft for Acne-Prone Skin
developed for all skin types with gently exfoliating salicylic acid

for face
Acne-Prone Skin Soothing Spot Gel
.5 fl. oz. 072-721 reg. \$18
\$13.99
Acne-Prone Skin Foaming Cleanser
5 fl. oz. 041-647 reg. \$17
\$12.99

for body
Acne-Prone Skin Soothing Gel
6.1 fl. oz. 040-636 reg. \$20
\$15.99
Acne-Prone Skin Exfoliating Body Wash
10.1 fl. oz. 041-556 reg. \$20
\$15.99
Acne-Prone Skin Body Pads
70 pads. 039-330 reg. \$30
\$24.99
Acne-Prone Skin Gentle Body Wash
10.1 fl. oz. 039-325 reg. \$20
\$15.99



Skin So Soft Facial Bar Salicylic* & Lactic Acids**
Gently exfoliates to help skin look softer and luxuriously smooth. 3.1 oz. net wt.
364-569 reg. \$6
\$4.99



Skin So Soft Facial Bar Hyaluronic Acid* & Niacinamide*
Enriches skin with moisture. 3.1 oz. net wt.
364-573 reg. \$6
\$4.99



Skin So Soft Facial Bar Retinol & Vitamin C***
Helps visibly even tone, brighten and enhance skin clarity. 3.1 oz. net wt.
364-607 reg. \$6
\$4.99



Skin So Soft Facial Bar Collagen & Goat Milk*****
Deeply hydrates. 3.1 oz. net wt.
364-626 reg. \$6
\$4.99

serious therapy for dry skin

Moisture Therapy Bonus-Size Body Lotions
Each, 33.8 fl. oz. reg. \$24
\$16.99 each

Intensive Healing & Repair
72-hour moisture for extra-dry skin. Fragrance-free.
828-111

Daily Skin Defense
Helps restore moisture to everyday dry skin.
827-890

Calming Relief
Soothes and relieves dry, itchy skin. Fragrance-free.
828-164



Moisture Therapy Intensive Healing & Repair Extra Strength Cream
24-hour moisturization. Fragrance-free. 5.3 oz. net wt.
224-982 reg. \$8
\$5.99



Moisture Therapy Balance + Soothe Body Wash
Softens as it gently cleanses. 13.2 fl. oz.
438-078 reg. \$23
\$18



Moisture Therapy Balance + Soothe Body Lotion
Skin looks softer and healthier. 13.2 fl. oz.
438-082 reg. \$25
\$20



Physiogel Daily Moisture Therapy Hydrating Facial Cream
72 hours of long-lasting hydration. With ceramide NP, squalane and lecithin. 5.07 fl. oz. **712-400**
\$23.99



Physiogel Daily Moisture Therapy Hydrating Lotion
72 hours of long-lasting hydration. With ceramide NP, squalane and lecithin. 13.5 fl. oz. **712-835**
\$19.99



Physiogel Calming Relief Redness Relieving Facial Cream
For dry, irritated skin. Clinically proven to help reduce redness in 7 days. With palmitamide MEA, squalane and lecithin. 1.69 fl. oz. **702-144**
\$15.99



Physiogel Calming Relief Redness Relieving Facial Cream
For dry, irritated skin. Clinically proven to help reduce redness in 7 days. With palmitamide MEA, squalane and lecithin. 3.4 fl. oz. **706-044**
\$23.99



Physiogel Calming Relief Redness Relieving Lotion
For dry, irritated skin. Clinically proven to help reduce redness in 7 days. With palmitamide MEA, squalane and lecithin. 8 fl. oz. **712-376**
\$23.99



Physiogel Calming Relief Redness Relieving Lotion
For dry, irritated skin. Clinically proven to help reduce redness in 7 days. With palmitamide MEA, squalane and lecithin. 13.5 fl. oz. **712-380**
\$29.99

PHYSIOGEL

A clinically tested solution for dry, sensitive skin. **With BioMimic Technology™** containing a complex of essential lipids that help strengthen and replenish the skin barrier, which locks in moisture, so skin feels soft, smooth and less sensitive from dryness.

- Hypoallergenic and dermatologist-tested.
- Formulated without fragrances or colorants.
- Sold at dermatology clinics worldwide.



Physiogel Daily Moisture Therapy Hydrating Facial Cream
72 hours of long-lasting hydration. With ceramide NP, squalane and lecithin. 2.53 fl. oz. **712-395**
\$17.99



Awarded the National Eczema Association Seal of Acceptance™

Senses Cozy Vanilla & Coconut Body Mist

With refreshing aloe vera extract. 8 fl. oz. **034-888** reg. \$18

\$14.99

Senses Cozy Vanilla & Coconut Body Lotion

With shea butter and vitamin E. 8 fl. oz. **200-208** reg. \$18

\$14.99

Senses Cozy Vanilla & Coconut Shower Gel

Moisturizing cleanser. 10 fl. oz. **035-190** reg. \$18

\$14.99



Senses Cozy Vanilla & Coconut Body Scrub

With shea butter. 9 oz. net wt. **530-314**

reg. \$23

\$18.99



Senses Cozy Vanilla & Coconut Hand Soap

With moisturizing glycerin. 10.1 fl. oz. **178-675**

reg. \$14

\$10.99



Senses Gratitude Lavender & Cedarwood Shower Steamers

Each, 1 oz. net wt. **504-428**

reg. \$26

\$20.99

set of 6



Fill your space with calming scents

Senses Gratitude Lavender & Cedarwood Air Diffuser

Six diffuser reeds. Fragrance oil, 2.37 fl. oz. **504-724** reg. \$30

\$24.99

Senses Gratitude Lavender & Cedarwood Candle

3 1/2" H x 3" diam. 7 oz. net wt. **905-374** reg. \$25

\$19.99

Senses Gratitude Lavender & Cedarwood Room Spray

3.25 fl. oz. **361-851** reg. \$14

\$10.99

Place candle on trivet or holder before lighting to protect furniture. Never leave burning candles unattended. Keep away from children and pets.

Senses Sparkling Grapefruit & Orange Blossom Body Mist

With refreshing aloe vera extract. 8 fl. oz. **034-687** reg. \$18

\$14.99



Senses Sparkling Grapefruit & Orange Blossom Body Lotion

With shea butter and vitamin E. 8 fl. oz. **367-219** reg. \$18

\$14.99



Senses Sparkling Grapefruit & Orange Blossom Shower Gel

Moisturizing cleanser derived from coconut. 10 fl. oz. **367-204** reg. \$18

\$14.99



Senses Sparkling Grapefruit & Orange Blossom Hand Soap

With moisturizing glycerin. 10.1 fl. oz. **415-127** reg. \$14

\$10.99



Senses Shower Gel
Blushing Cherry Blossom
 5 fl. oz. 921-847
 reg. \$7
\$4.99



Senses Shower Gel
Fresh Cucumber & Melon
 5 fl. oz. 400-716
 reg. \$7
\$4.99



Senses Shower Gel
Juicy Pomegranate & Mango
 5 fl. oz. 248-155
 reg. \$7
\$4.99



Senses Shower Gel
Silky Vanilla
 5 fl. oz. 248-140
 reg. \$7
\$4.99



soak away stress

Senses Bubble Bath
 Each, 24 fl. oz. reg. \$15
\$11.99 each



Cherry Blossom
929-211



Sensitive Skin
875-400



Vanilla Cream
875-669



Orange & Honeysuckle
633-952



Endless Ocean
809-075



Lily & Honeysuckle Blossom
805-524



Cucumber Melon
688-950



Lavender Garden
381-799



Soft Pink
415-218



Avon Shower Brush
 904-727
 reg. \$10
\$7.99

Exfoliation Mitt
 Microfiber jacquard,
 with nylon/spandex cuff.
 439-734
 reg. \$13
\$9.99



**Veilment
CBD Dry
Body Oil**
3.73 fl. oz.
869-485
reg. \$37
\$30



**Veilment
CBD Nourishing
Body Cream (Tube)**
6.7 fl. oz. 254-229
reg. \$40
\$33



**Veilment
Dead Sea Salt
Body Scrub
& Cleanser**
13.5 fl. oz.
781-992
reg. \$17
\$13.99



**Veilment
Black Rose
Body Scrub &
Cleanser**
13.5 fl. oz.
707-969
reg. \$17
\$13.99



**Veilment
Glacial Water
Cooling Body Scrub
& Cleanser**
13.5 fl. oz.
573-480
reg. \$17
\$13.99



**Veilment
Himalaya Pink Salt
Body Scrub
& Cleanser**
13.5 fl. oz.
991-211 reg. \$17
\$13.99



**Veilment
Himalaya Pink Salt
Exfoliating Soap**
5.3 oz. net wt.
260-440
reg. \$8
\$6



gotta glow

Get a sun-kissed tan
anywhere...even at home.

Light/Medium
422-307

Medium/Dark
422-326

**Veilment Lumière
Sunless Tanning Serum**
The more drops, the
deeper the tan. Color-
correcting technology
visibly evens tone and
reduces redness. Suitable
for different skin tones.
With skin-nourishing
hemp seed oil and vanilla
extract. Dermatologist-
tested, hypoallergenic and
vegan. Each, 1.01 fl. oz.
reg. \$25
\$19.99 each



Mix and blend
into daily body
moisturizer for
a customized,
natural glow.



NEW

**AN ORAL CARE INNOVATION:
HIMALAYA PINK SALT**

For a healthy-looking, whiter, brighter smile. Enriched with Himalayan Pink Salt.



Himalaya Pink Salt Purple Whitening Toothbrush
Purple color fades as bristles wear, reminding you to replace. Clinically tested to remove 4X more interdental plaque.* Bristles with 2X the elasticity clean narrow gaps between teeth and the gum line.
383-165 reg. \$6
\$5.29

*Compared to LG H&H regular toothbrush with soft bristles.



Himalaya Pink Salt Purple Color Corrector + Intensive Whitening Toothpaste (with Fluoride)
Purple toothpaste with advanced color-correcting power. Clinically tested to reduce yellow stains on teeth by 2X after one use; 9X more than regular toothpaste. Visibly whiter teeth in one week. 24-hour stain resistance. Vanilla mint flavor. Formulated without parabens, gluten, phthalates and triclosan.
3.5 oz. net wt.
383-624 reg. \$12
\$9.50



Himalaya Pink Salt Intensive Whitening Toothpaste (with Fluoride) 3-Piece Pack
Clinically tested to whiten teeth in one week; 9X more than regular toothpaste without SHMP. 24-hour stain resistance. With sodium fluoride, an anticavity ingredient that helps strengthen enamel. Pink paste. Spearmint flavor. Each, 4.2 oz. net wt. **729-689 reg. \$36**
\$26.99 the 3-piece pack



Himalaya Pink Salt Whitening Toothbrush (Medium)
Bristles are infused with Himalayan pink salt for effective cleansing and a gentle brightening effect. Medium-sized brush. High-tension bristles penetrate narrow gaps.
729-359 reg. \$6
\$4.99



Himalaya Pink Salt Intensive Whitening Toothbrush (Large)
Bristles are infused with Himalayan pink salt for effective cleansing and a gentle brightening effect. Large-sized brush. High-tension bristles penetrate narrow gaps.
035-812 reg. \$6
\$5.29



Himalaya Pink Salt Whitening Travel Set (Toothpaste + Toothbrush)
Includes:
• Himalaya Pink Salt Toothpaste, spearmint flavor. 1 oz. net wt.
• Toothbrush. Medium size.
728-902 reg. \$11
\$8.99
the 2-piece pack



Himalaya Pink Salt Whitening Natural Salt Toothpaste (Fluoride-Free) 2-Piece Pack
Includes two toothpastes. Helps reduce plaque, gently whiten teeth and naturally freshen breath. Contains essential minerals and bifidus essences. Pink gel. Spearmint flavor. Formulated without parabens, gluten and triclosan.
Each, 3.9 oz. net wt.
347-836 reg. \$18
\$14.99
the 2-piece pack



Avon Aromatherapy Body Lotion Bright Day Ahead
Charge your day with positive energy. With citrus and ginger fragrance oils to uplift your mood. 5.8 fl. oz. **584-670** reg. \$17
\$13.99



Avon Aromatherapy Body Lotion Sleep Tight Zzz
Unwind with rose and lavender fragrance oils to help promote a restful sleep. 5.8 fl. oz. **584-866** reg. \$17
\$13.99



Avon Aromatherapy Body Lotion Bye-Bye Stress
De-stress with refreshing spearmint and eucalyptus fragrance oils for stress relief and mental clarity. 5.8 fl. oz. **584-684** reg. \$17
\$13.99



Avon Care Silicone Glove Protective Hand Cream
Lasting protection against dryness. 3.4 fl. oz. **366-887** reg. \$7
\$5.99



Moisture Therapy Intensive Healing & Repair Hand Cream
For extremely dry skin. Moisturizes through hand washings. Fragrance-free. 4.2 fl. oz. **482-937** reg. \$7
\$5.99



Moisture Therapy Intensive Healing & Repair Moisturizing Lip Treatment Balm
.14 oz. net wt. **285-117** reg. \$2
\$1.59



Veilment Care Lip Balm
Strawberry **602-720**
Cherry **604-168**
Each, .14 oz. net wt. reg. \$2
\$1.59 each



Perfumed Liquid Deodorant
Soft floral scent. Aluminum-free. Fast-drying. Easy fingertip application. 2 fl. oz. **889-915** reg. \$8
\$5.99



Avon Microbiome by Reach® Hygiene Deodorant Stick
Floral citrus scent. Aluminum-free. 24-hour odor protection. 2.65 oz. net wt. **524-528** reg. \$16
\$12.99

NEW
Roll-On Anti-Perspirant Deodorant
Each, 1.7 fl. oz. reg. \$4
\$2.99 each

On Duty Sport Essence 786-186

Roll-On Anti-Perspirant Deodorant
Each, 2.6 fl. oz. reg. \$5
\$3.99 each

On Duty Sport 875-726

make the great outdoors yours

Our DEET-free repellents protect your family without chemicals that feel harsh on skin. **Bug Guard** repels deer ticks that may carry and transmit Lyme disease.



Foot Works Arthritis Achy Foot and Muscle Cream
Contains glucosamine and chondroitin. 2.5 fl. oz. 208-400 reg. \$11
\$8.99



Foot Works Maximum Strength Cracked Heel Cream
Transforms the look and feel of dry, cracked heels. 2.5 fl. oz. 086-762 reg. \$11
\$8.99



Foot Works Intensive Callus Cream
Softens and moisturizes dry, rough skin. 3.4 fl. oz. 851-310 reg. \$11
\$8.99



Foot Works Overnight Renewing Cream
With jojoba oil. 3.4 fl. oz. 324-225 reg. \$11
\$8.99



Foot Works Intensive Moisture Foot Cream
Suitable for diabetics. 2.5 fl. oz. 069-016 reg. \$11
\$8.99



Foot Works Deodorizing Spray
Can also be used in footwear. 3.5 oz. net wt. 313-236 reg. \$14
\$10.99



Bug Guard Plus IR3535® Expedition Aerosol Spray SPF 28
Repels mosquitoes that may transmit West Nile virus for 8 hours. Repels deer ticks for 12 hours. 4 oz. net wt. 521-370 reg. \$20
\$15.99



Bug Guard Plus Picaridin Aerosol Spray
4 oz. net wt. 315-243 reg. \$20
\$15.99



Bug Guard Plus Picaridin Pump Spray
4 fl. oz. 827-756 reg. \$17.25
\$11.99

- 4 in 1:
- Fine-grain file
 - Metal file
 - Pumice
 - Brush



Foot Works Pedicure Tool
592-712 reg. \$11
\$8.99

- Kit includes:
- Nail clipper
 - Toenail clipper
 - Scissors
 - Small nail file
 - Cuticle pusher



Foot Works Pedicure Kit
Case, 3 1/2" L x 4 1/4" W. 121-029 reg. \$13
\$9.99



Bug Guard Plus Picaridin Family-Size Pump Spray
8 fl. oz. 827-780 reg. \$24.50
\$17.99



Bug Guard Plus Picaridin Towelettes
Each, 9" L x 5 1/2" W, .3 fl. oz. 269-562 reg. \$16
\$12.99 pack of 8



Bug Guard Anti-Itch Spray
2 fl. oz. 827-010 reg. \$15
\$9.99



With revitalizing honey, royal jelly and propolis (tree sap plus beeswax).

bee goodness for hair

Elastine PropoliThera

Volumizing
Enhances texture. Hair looks fuller, thicker, stronger. Each, 16.9 fl. oz.

A. Shampoo 892-607
B. Conditioner 892-870

Damage Repair
Helps hair appear smooth and manageable. Each, 16.9 fl. oz.

C. Shampoo 053-082
D. Conditioner 638-681

reg. \$20 each
\$15.99 each

E. Hair Mask

Enriched with nutrients to help deeply nourish hair and mend damaged split ends. 10.1 fl. oz. **150-301**
reg. \$20

\$15.99

F. Hair Oil Serum

Helps to strengthen, protect, moisturize and smooth hair, and to add shine. 5.7 fl. oz. **895-190**
reg. \$22

\$16.99



Elastine PropoliThera Serum Treatment
7.8 fl. oz. **359-821**
reg. \$22
\$17.99



Elastine PropoliThera Leave-In Conditioner
8.1 fl. oz. **102-570**
reg. \$19
\$14.99



Elastine PropoliThera Aloe Dual-Active Hair Serum
3.4 fl. oz. **102-585**
reg. \$30
\$24.99



Elastine PropoliThera Hair Deep Conditioning Treatment Cap
053-761 reg. \$8
\$6.99



Advance Techniques 360 Nourish with Moroccan Argan Oil Leave-In Treatment
Moisturizes dry, damaged hair. With vitamins B and E. 2 fl. oz. **511-411**
reg. \$16
\$11.99



Advance Techniques Daily Shine Dry Ends Serum
Helps mend and nourish split ends instantly. With provitamin B5. 2 fl. oz. **883-190**
reg. \$13
\$9.99



Advance Techniques Daily Shine 2-in-1 Shampoo & Conditioner
Leaves hair feeling clean, conditioned and frizz-free. With provitamin B5. 11.8 fl. oz. **553-413**
reg. \$19
\$14.99



Root Touch-Up
Instantly covers up roots and bare spots. With black bean and ginseng. Built-in mirror. Each, .25 oz. net wt. reg. \$20
\$15.99 each

Reddish Brown 243-627
 Light Brown 244-642
 Dark Brown 245-213
 Black 245-251

ELASTINE BOTANICALS

Infused with revitalizing babassu seed oil, chamomile flower water and lemon chestnut extract

**Argan & Castor
Anti-Frizz Shampoo**
6.7 fl. oz. 150-866
reg. \$7
\$4.99

**Cherry Blossom &
Hyaluronic Acid
Moisturizing Shampoo**
6.7 fl. oz. 239-943
reg. \$7
\$4.99

**Rosemary & Sea Salt
Volumizing Shampoo**
6.7 fl. oz. 240-556
reg. \$7
\$4.99



**Elastine Salon de Color
Color Vibe
Purple Shampoo**
8.4 fl. oz. 436-109
reg. \$19
\$14.99



**Elastine Salon de Color
Color Vibe
Purple Conditioner**
8.4 fl. oz. 436-955
reg. \$19
\$14.99



**Elastine Moisture Essentials
Volume Shampoo**
12.7 fl. oz. 495-106 reg. \$9
\$6.99



**Elastine Moisture Essentials
Volume Conditioner**
12.7 fl. oz. 495-110 reg. \$9
\$6.99



**Elastine HempharmX
Hydrating Shampoo**
13.5 fl. oz. 359-836 reg. \$24
\$20



**Argan & Castor
Anti-Frizz Conditioner**
6.7 fl. oz. 150-904 reg. \$7
\$4.99



**Cherry Blossom & Hyaluronic
Acid Moisturizing Conditioner**
6.7 fl. oz. 240-059 reg. \$7
\$4.99



**Rosemary & Sea Salt
Volumizing Conditioner**
6.7 fl. oz. 246-831 reg. \$7
\$4.99



**Elastine Moisture Essentials
Shine Shampoo**
12.7 fl. oz. 495-125 reg. \$9
\$6.99



**Elastine Moisture Essentials
Shine Conditioner**
12.7 fl. oz. 495-130 reg. \$9
\$6.99



**Elastine HempharmX
Hydrating Conditioner**
13.5 fl. oz. 360-544 reg. \$24
\$20



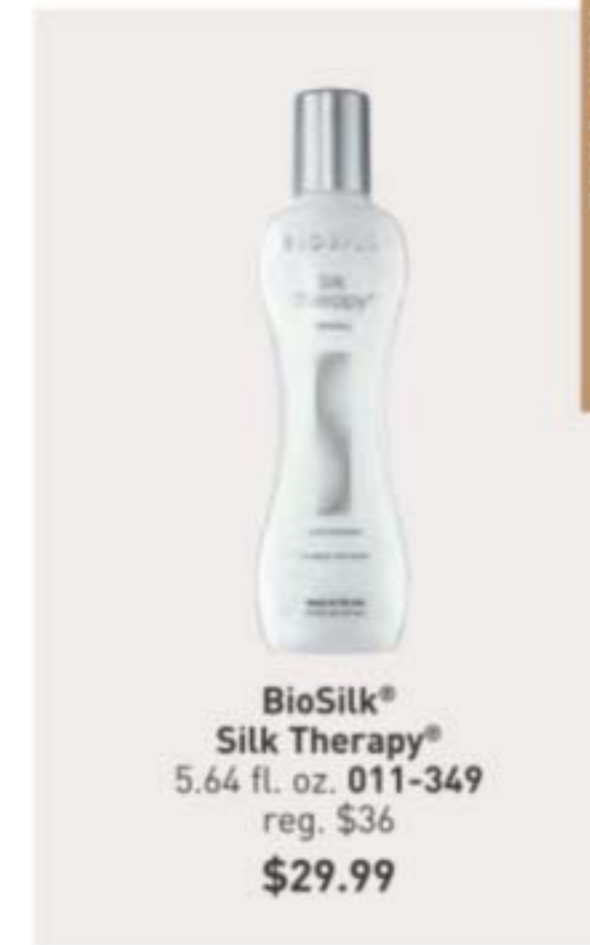
**CHI® Essentials
Revive Keratin + Bonding
Protecting Serum**
3 fl. oz. 451-340 reg. \$42
\$34.99

**CHI® Essentials
Revive Keratin + Bonding
Restoring Shampoo**
12 fl. oz. 451-192
reg. \$25
\$19.99

**CHI® Essentials
Revive Keratin + Bonding
Restoring Conditioner**
12 fl. oz. 451-211
reg. \$25
\$19.99



**CHI® Advanced Ionic
Compact Hair Dryer**
Attachments included. 471-474
reg. \$150
\$135



**BioSilk®
Silk Therapy®**
5.64 fl. oz. 011-349
reg. \$36
\$29.99



**CHI® 1" Volcanic Lava
Ceramic Pro Spin 'n' Curl**
471-527 reg. \$199
\$179



Avon Detangling Hairbrush
504-815
reg. \$13
\$9.99



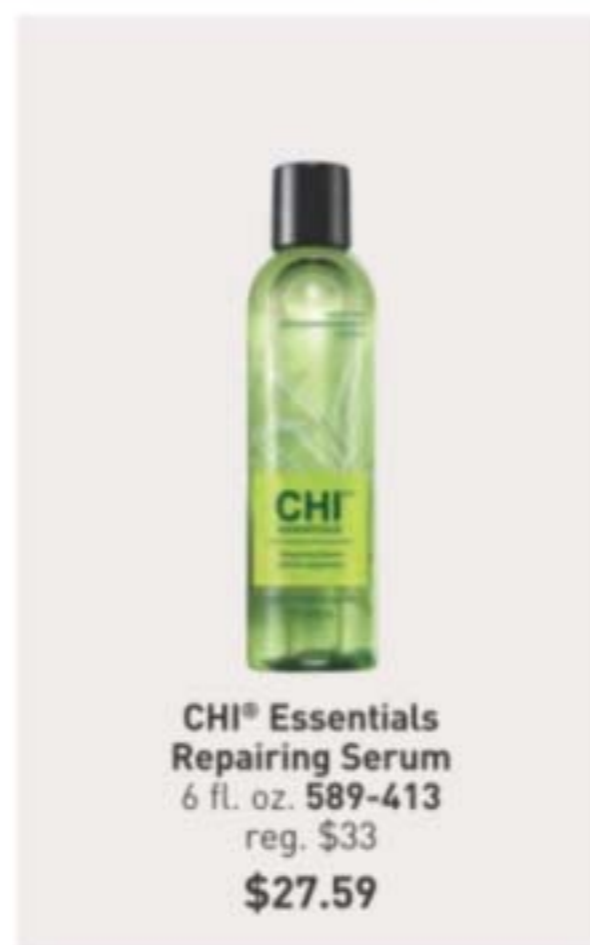
Avon Detangling Comb
504-820
reg. \$8
\$5.99



**CHI® Essentials
Replenishing Shampoo**
12 fl. oz. 589-140
reg. \$22
\$17.99



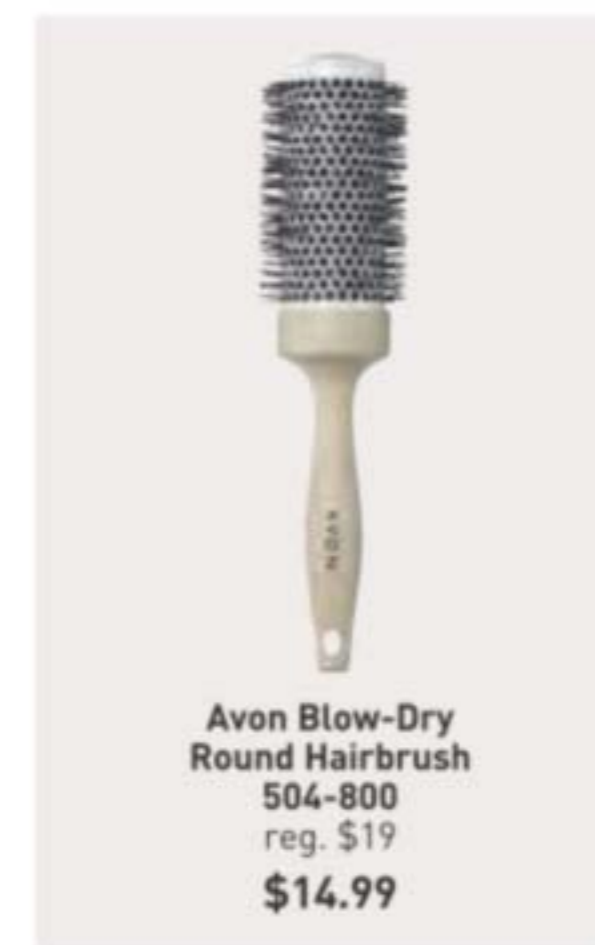
**CHI® Essentials
Moisturizing Conditioner**
12 fl. oz. 589-409
reg. \$22
\$17.99



**CHI® Essentials
Repairing Serum**
6 fl. oz. 589-413
reg. \$33
\$27.59



**CHI® ENVIRO 54®
Natural Hold Hair Spray**
10 oz. net wt. 908-450
reg. \$26.50
\$21.50



**Avon Blow-Dry
Round Hairbrush**
504-800
reg. \$19
\$14.99



**Avon
Compact Hairbrush**
504-743
reg. \$10
\$7.99



Dr. Groot Scalp Fortifying Serum Treatment
Moisturizes and helps support healthy hair roots. 6.7 fl. oz. **782-271** reg. \$35
\$29



Dr. Groot Scalp Fortifying Hair-Thickening Shampoo
With coconut oil, cleanses as it helps moisturize dry scalp and hair. 13.5 fl. oz. **778-014** reg. \$35
\$29



Dr. Groot Premium Scalp Cleansing Brush
Helps reinvigorate scalp health and stimulate circulation. **065-776** reg. \$19
\$16



Dr. Groot Anti-Dandruff Scalp Care 2-in-1 Shampoo and Conditioner
Contains 3% salicylic acid, biotin, caffeine, rosemary and menthol. 10.1 fl. oz. **451-431** reg. \$28
\$22.99



Dr. Groot Anti-Dandruff Scalp Care Shampoo
Contains 3% salicylic acid, biotin, caffeine, rosemary and menthol. No silicones. 10.1 fl. oz. **451-412** reg. \$28
\$22.99



Dr. Groot Professional Bonding System 01 Bond Fortifying Shampoo
Helps fortify hair from the roots and visibly restore smoothness. 13 fl. oz. **701-607**
\$30



Dr. Groot Professional Bonding System 02 Keratin Water Treatment
Water-to-cream formula. Hair looks instantly smoother. Use 2X-3X a week. 6.7 fl. oz. **701-611**
\$30



Dr. Groot Professional Bonding System 03 Bond Fortifying Conditioner
Instantly helps minimize frizz.* 8.4 fl. oz. **701-865**
\$30

*Based on a clinical test of 19 hair tresses.



Dr. Groot Professional Bonding System 04 Bond Fortifying Instant Repair Serum
Restorative leave-in serum. Apply to damp or dry hair. 4.2 fl. oz. **702-130**
\$30

WANT GREAT HAIR? START AT THE SCALP.

Dr. Groot Scalp Revitalizing Solution
Think of scalp care as an extension of skin care. With **biotin** and **capsulated prebiotics**, these formulas offer a uniquely customized solution that gets to the root of your problem.



Scalp Revitalizing Solution Hair Thickening Shampoo
Helps hair look thicker and fuller. Infused with biotin and prebiotics. 13 fl. oz. **715-064**
\$30

Scalp Revitalizing Solution Purifying Clay Shampoo
Instantly purify roots, hydrate dry ends. With three kinds of clay (white, herbal, glacial) plus biotin and salicylic acid. 13 fl. oz. **715-098**
\$30

Scalp Revitalizing Solution Scalp Relief Tonic
Helps hydrate dry scalp. With calming chamomile, moisturizing niacinamide and cooling menthol. 4.73 fl. oz. **717-110**
\$30

Scalp Revitalizing Solution Scalp Soothing Shampoo
Helps refresh, moisturize and comfort your scalp. With biotin and cica extract. 13 fl. oz. **715-083**
\$30

Scalp Revitalizing Solution Miracle in Shower Treatment
Hair looks smoother and healthier instantly. With nourishing arginine, panthenol, niacinamide and salicylic acid. 8.4 fl. oz. **715-451**
\$30



Shown:
Almond.



❖ **Bali® Comfort Revolution® Soft Touch™ T-Shirt Underwire Bra (DF3468)***
Cool Comfort® fabric. 2-way convertible straps. Back closure. Nylon/spandex. Sizes: 36-40B; 34-42C,D,DD [all colors]. reg. \$48
\$40.99



Shown:
Sandshell.



❖ **Bali® One Smooth U® Comfort Stretch Lace Underwire Bra (DF0084)***
Back closure. Convertible straps. Nylon/spandex. **White, Sandshell, Evening Blush or Black:** 36-40B; 34-42C,D,DD. **Soft Blue Grey or Smart Red:** 36-40C,D; 36-38DD. reg. \$48
\$40.99



Shown:
Nude Dot.



❖ **Bali® Comfort Revolution® ComfortFlex Fit® Shaping Wireless Bra (3488)***
Full coverage with seamless foam cups. Wide Comfort-U® straps. Back closure. Nylon/spandex. Sizes: S, M, L, XL, 2XL, 3XL [all colors]. reg. \$48
\$40.99



Shown:
Black.



❖ **Bali® Lace 'N Smooth Body Shaper (DF8L10)***
Firm-control shaper targets tummy, waist and rear. Built-in bra with softly lined underwire cups. Adjustable straps. LYCRA® BEAUTY spandex. Cups/Body: Nylon/spandex. Crotch lining: 100% cotton. Sizes: 34-40B,C,D,DD [all colors]. reg. \$60
\$50.99



Shown:
Black.



❖ **Bali® Beautifully Confident with Leak Protection Liner Brief (DFLLB1)***
Light leak protection liner in crotch. Body and lace: Polyester/spandex. Crotch lining: Polyester. Sizes: M, L, XL, 2XL [all colors]. reg. \$15
\$12.99



Shown:
Black.



❖ **Bali® Seamless Extra Firm Control® 2-Pack Brief (DFX245)***
Ultra-firm control targets tummy, waist and rear. Body: Nylon/spandex. Crotch lining: Cotton. Sizes: M, L, XL, 2XL [all colors]. reg. \$37
\$31.99 the pack



Shown:
Almond.



❖ **Bali® Ultimate Smoothing Lightweight T-Shirt Bra (DF4481)***
Extra wide back and sides. Ultra-flexible foam cups. 2-way convertible straps. Back closure. Nylon/spandex. Sizes: 34-42C,D,DD; 36-40 DDD [all colors]. reg. \$48
\$40.99





Shown: White.

❖ **Playtex® 18 Hour® Active Lifestyle Wirefree Bra (US4159)***

Back closure. Polyester/nylon/spandex.

White, Light Beige or Nude: 36-42B; 36-44C,D; 38-46DD; 38-44DDD. **Black:** 36-42B; 36-44C,D; 38-44DD. reg. \$39

\$33.99



Shown: Nude.

❖ **Playtex® Perfectly Smooth® Wirefree Bra (US4707)***

Back closure. Nylon/spandex, polyester lining.

White, Nude, Black: 36-42B; 36-44C,D,DD; 36-42DDD. **Evening Blush:** 36-44C,D,DD.

reg. \$46
\$39.99



Shown: White Bloom Lace.

❖ **Maidenform® Lightly Lined® Convertible Lace Bralette (DM1188)***

Wireless. 3-way convertible straps.

Mesh back panel with back closure. Nylon/spandex. Sizes: 34-36A; 34-40B,C,D [all colors].

reg. \$40
\$33.99



Shown: Black/Body Beige Lining.

❖ **Maidenform® Comfort Devotion® Convertible Full Coverage Underwire Bra (09404)***

SmartZone® cups lift and shape. Lightly lined. 2-way convertible straps. Back closure. Nylon/elastane.

Sizes: 34-42B,C,D; 34-40DD [all colors].

reg. \$48
\$40.99



Shown: Evening Blush.

❖ **Playtex® Secrets® Balconette Full-Figure Wireless Bra (US4824)***

TruSupport 4-way system with higher sides, fuller cups, wider straps and a smoothing-back band. Foam-lined wireless cups. Adjustable straps. Back closure. Nylon/spandex. Sizes: 36-44C,D,DD,DDD [all colors]. reg. \$46

\$39.99



Shown: Black.

❖ **Playtex® Secrets® Underwire Full-Coverage Smoothing Balconette T-Shirt Bra for Full Figures (US4823)***

TruSupport 4-way system. Adjustable straps. Back closure. Nylon/polyester/spandex/cotton. Sizes: 36-44C,DDD; 36-46D,DD [all colors]. reg. \$46

\$39.99



Shown: Latte Lift.

❖ **Maidenform® One Fab Fit® Everyday Full Coverage Racerback Bra (07112)***

Lace back for shaping. Adjustable straps. Front closure. Nylon/spandex.

Sizes: 36-38B; 34-40C,D; 34-38DD [all colors].

reg. \$44
\$37.99



Shown: Paris Nude.

❖ **Maidenform® One Fab Fit® Everyday Modern Demi Underwire Bra (DM7543)***

SmartZone® cups lift and shape. 2-way convertible straps. Back closure. Nylon/spandex.

Sizes: 32-36A; 32-40B; 34-40C,D [all colors].

reg. \$48
\$40.99



all about ease

Super-soft knits. Easy-wearing neutrals. Effortless essentials that upgrade your every day.



NEW

❖ **Drop Waist Dress**
Navy dress in a soft knit fabric with round neckline, long sleeves and drop waist. Polyester/spandex. Center back length: 34½" on M; 36" on 1X. Machine wash, line dry. Imported.
XS(0-2) **198-737**
S(4-6) **198-794**
M(8-10) **198-813**
L(12-14) **198-828**
XL(16) **198-832**
1X(18W-20W) **198-885**
2X(22W-24W) **198-961**
3X(26W-28W) **198-976**
reg. \$49.99
\$39.99



NEW

❖ **Side Collar Top**
Light grey soft knit pullover with side collar, drop shoulder detail, side slits and high-low hem. Rayon/polyester/spandex. Center front length: 26" on M; 28" on 1X. Center back length: 28½" on M; 30½" on 1X. Machine wash and dry. Imported.
reg. \$44.99
\$34.99

XS(0-2) **198-206**
S(4-6) **198-244**
M(8-10) **198-259**
L(12-14) **198-263**
XL(16) **198-320**
1 X(18W-20W) **198-517**
2X(22W-24W) **198-536**
3X(26W-28W) **198-722**

stylish staples

Forever pieces with a luxe feel and contrasting details. Dressed up or down, they're the perfect way to elevate your closet classics.



BOYFRIEND FIT with a glen-plaid knit fabric

SOFT faux nubuck loafer

◆ Pattern Blazer
Boyfriend blazer in a soft glen-plaid knit fabric with single button closure and front flap pockets. Polyester/spandex. Center back length: 28" on M and 1X. Machine wash, line dry. Imported.
XS(0-2) 102-312
S(4-6) 103-266
M(8-10) 103-342
L(12-14) 104-334
XL(16) 104-349
1X(18W-20W) 104-774
2X(22W-24W) 104-980
3X(26W-28W) 105-091
reg. \$53.99
\$42.99

◆ Sueded Pant
Black pull-on faux-suede pants with side seam pockets. Polyester/spandex. Inseam: 28" on all sizes. Dry clean only (or spot clean). Imported.
XS(0-2) 105-163
S(4-6) 105-819
M(8-10) 106-045
L(12-14) 106-140
XL(16) 106-155
1X(18W-20W) 106-246
2X(22W-24W) 106-485
3X(26W-28W) 106-633
reg. \$46.99
\$36.99

◆ Soft Loafer
Black soft faux-nubuck loafer with treaded rubber outsole. Man-made materials. Imported.
6 102-088 9 102-274
7 102-107 10 102-289
8 102-260 11 102-308
reg. \$42.99
\$32.99

◆ Bell Sleeve Top
Red waffle-textured V-neck top with double-layer bell sleeves. 100% polyester. Center back length: 24 1/4" on M; 25" on 1X. Machine wash and dry. Imported.
XS(0-2) 039-909 XL(16) 040-947
S(4-6) 040-158 1X(18W-20W) 040-985
M(8-10) 040-530 2X(22W-24W) 041-063
L(12-14) 040-818 3X(26W-28W) 041-140
reg. \$44.99
\$34.99

◆ Space-Dye Ribbed Pullover
Grey/brown space-dye knit pullover with long sleeves, and contrasting wine-colored trim detail at neck, gusset and sleeve cuffs. Includes button detail at gusset. Body: polyester/spandex. Trim: cotton/polyester. Center back length: 28 1/4" on M; 30" on 1X. Machine wash and dry. Imported.
XS(0-2) 106-997 XL(16) 107-041
S(4-6) 107-003 1X(18W-20W) 107-060
M(8-10) 107-018 2X(22W-24W) 107-075
L(12-14) 107-022 3X(26W-28W) 107-080
reg. \$39.99
\$29.99

◆ Sueded Shoulder Top
Grey knit long-sleeve pullover with asymmetrical black faux-suede trim panel. Body: viscose/polyester/spandex. Trim: polyester/spandex. Center back length: 26" on M; 27" on 1X. Machine wash and dry. Imported.
XS(0-2) 106-743 XL(16) 106-910
S(4-6) 106-758 1X(18W-20W) 106-944
M(8-10) 106-781 2X(22W-24W) 106-978
L(12-14) 106-796 3X(26W-28W) 106-982
reg. \$49.99
\$39.99



DOUBLE-LAYER bell sleeves



SPACE-DYE knit with contrasting trim



to a tee...

Love-to-live-in classic-fit tees in fresh shades and a fun pop of print.



NEW

◆ **Holiday 4-Pack of Tees**

Includes fuchsia, blue with black dot print, dark turquoise and brick red classic-fit tees with round neckline, short sleeves and slightly rounded hem. Cotton/polyester. Center back length: 26" on M; 27" on 1X. Machine wash and dry. Imported.

- XS(0-2) **200-557**
- S(4-6) **200-561**
- M(8-10) **200-595**
- L(12-14) **200-600**
- XL(16) **200-614**
- 1X(18W-20W) **200-629**
- 2X(22W-24W) **200-652**
- 3X(26W-28W) **200-667**
- reg. \$49.99

\$39.99 the pack



APPAREL SIZE CHART			
SIZE	BUST	WAIST	HIP
XS(0-2)	30.5"-32"	23.5"-25"	32.5"-34"
S(4-6)	33.5"-35"	26.5"-28"	35.5"-37"
M(8-10)	36.5"-38"	29.5"-31"	38.5"-40"
L(12-14)	39.5"-41"	32.5"-34"	41.5"-43"
XL(16)	43"-44"	35.5"-36.5"	44.5"-45.5"
1X(18W/20W)	46.5"-48.5"	39"-41"	48"-50"
2X(22W/24W)	50.5"-52.5"	43"-45"	52"-54"
3X(26W/28W)	54.5"-56.5"	47"-49"	56"-58"



NEW

◆ **Contrast Stitch Animal Pullover**

Black and grey animal-print pullover with waffle texture, magenta contrast stitching and high-low hem. 100% polyester. Center back length: 25½" on M; 27" on 1X. Machine wash and dry. Imported.

- XS(0-2) **199-001**
- S(4-6) **199-107**
- M(8-10) **199-293**
- L(12-14) **199-384**
- reg. \$46.99
- XL(16) **199-403**
- 1X(18W-20W) **199-475**
- 2X(22W-24W) **199-494**
- 3X(26W-28W) **199-638**

\$36.99



NEW

◆ **Corduroy Button-Front Blouse**

Lavender soft corduroy blouse with full button closure and front chest pockets. Relaxed fit. Polyester/spandex. Center back length: 30" on M; 32" on 1X. Machine wash, line dry. Imported.

- XS(0-2) **199-695**
- S(4-6) **199-700**
- M(8-10) **199-767**
- L(12-14) **199-790**
- reg. \$46.99
- XL(16) **199-987**
- 1X(18W-20W) **200-155**
- 2X(22W-24W) **200-428**
- 3X(26W-28W) **200-504**

\$36.99

WEEKEND GETAWAY 3-PIECE SET

ONLY \$34.99

WITH ANY \$15 BROCHURE PURCHASE

Weekend Getaway Set Includes:

- **Weekender Tote**

Black weekender tote bag with grosgrain adjustable shoulder strap and handles, top zipper closure, plus bottom compartment with zipper closure for extra storage. Body: 100% nylon with PVC coating. Base lining and handles: 100% polyester. 18 1/4" L (top)/ 15 1/4" L (bottom) x 8 1/4" W x 14" H. Handle drop: 9" L. Shoulder strap drop: 22" L (fully extended).

Imported.
\$49.99 value

- **Anew Platinum Day Cream Broad Spectrum SPF 25**

1.7 oz. net wt.
\$42 value

- **Isa Knox Anew Clinical Collagen Booster Firming Cream**

1.7 fl. oz.
\$45 value

558-530

\$136.99 if purchased separately.

Weekend Getaway Set purchase does not qualify towards this or any other offer and is available this brochure only. LIMITED QUANTITIES.



Enjoy special prices and offers with an Avon account or Representative.



Footwear storage at base of bag. (Shoes not included.)



© 2024 The Avon Company. All rights reserved.

CAMPAIGN 23, 2024
THE AVON COMPANY
165 BROADWAY, NY, NY 10006

avon.com



8 88761 70430 2
Pk of 10 4714391



8 88761 70432 6
Single 4714411

Brochure effective until _____



See our commitment at
www.avon.com/animal-welfare

RETURN POLICY If you are not satisfied, return any item within 45 days. View Avon's full 45-Day Return Policy at avon.com/shipping-returns.