

AWOON

CAMPAIGN 24

Special
offer!
details
inside

gifts that
DAZZLE

NEW! LIMITED EDITION



Glamorous Pearly Gift Set*
Three-piece set. Glass pearlesque beads with dazzling silvertone-plated fireballs and clear glass stone accents. 16½" L. with 3½" extender. Pierced drops, 1" L. Bracelet: one size fits most.
525-290
\$39.99 if purchased separately

THIS BROCHURE ONLY.
LIMITED QUANTITIES.

*Glamorous Pearly Gift Set purchase does not qualify toward this or any other offer and is available this brochure only.

Enjoy special prices and offers with an Avon account or Representative.



it's a PEARLY PARTY

GLAMOROUS PEARLY GIFT SET*
ONLY \$19.99 WITH ANY
\$15 HOLIDAY PURCHASE
FROM PAGES 4-53.

*necklace,
earrings and
bracelet set*

NEW! LIMITED EDITION

holiday GLAMOUR

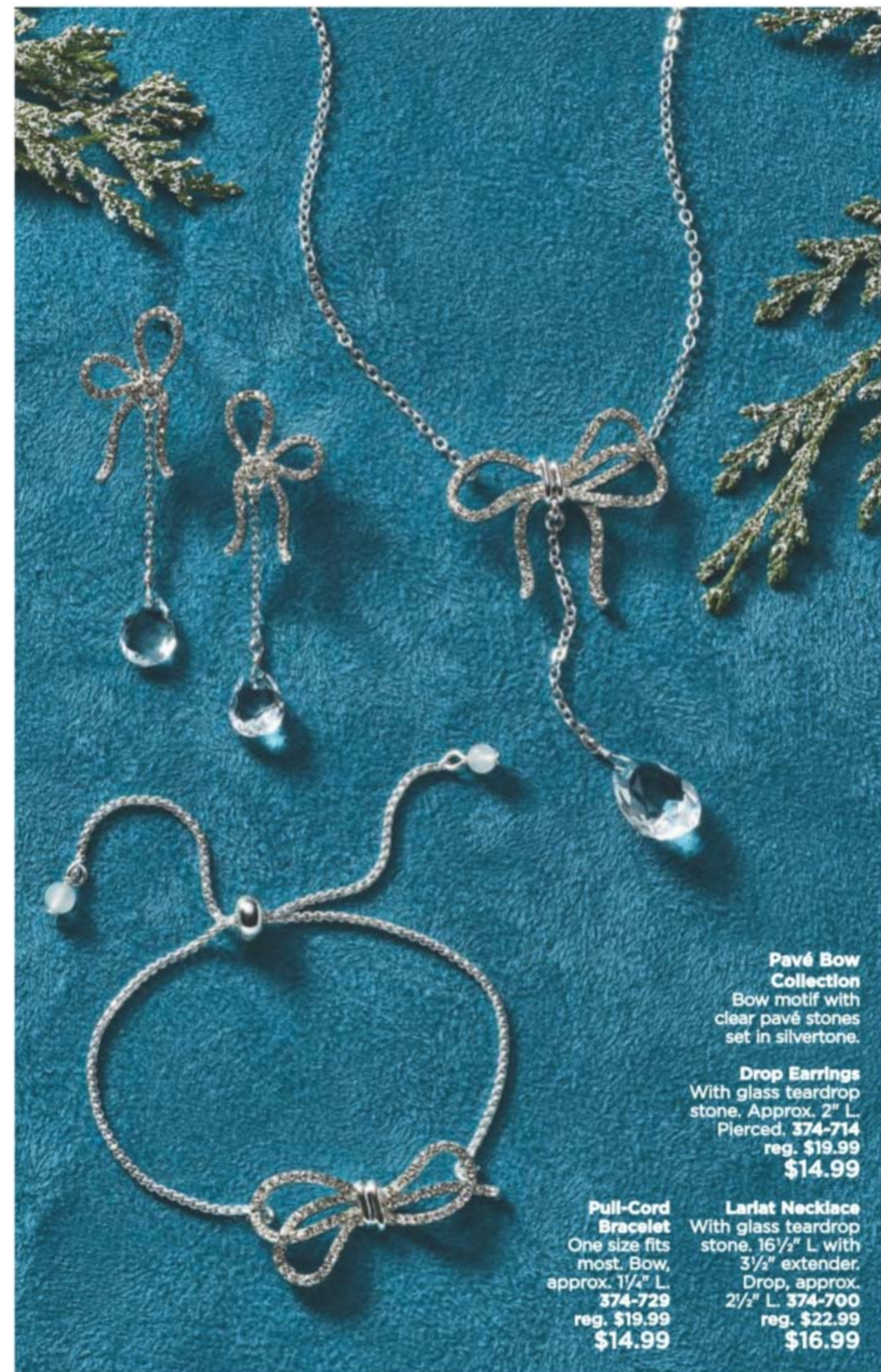
Violet Jewel-Tone Collection
Amethyst-colored and clear stones set in silvertone.

Necklace and Earrings Set
16½" L with 3½" extender. Pierced drops, ¾" L.
522-248
reg. \$24.99
\$19.99 the set

Tennis Bracelet
7½" L with 1" extender.
522-271
reg. \$16.99
\$12.99

Hoop Earrings
1" diam. Pierced.
522-362
reg. \$12.99
\$9.99

necklace and earrings set



Pavé Bow Collection
Bow motif with clear pavé stones set in silvertone.

Drop Earrings
With glass teardrop stone. Approx. 2" L. Pierced. 374-714
reg. \$19.99
\$14.99

Pull-Cord Bracelet
One size fits most. Bow, approx. 1¼" L. 374-729
reg. \$19.99
\$14.99

Lariat Necklace
With glass teardrop stone. 16½" L with 3½" extender. Drop, approx. 2½" L. 374-700
reg. \$22.99
\$16.99

necklace,
earrings and
bracelet set



**Exquisite Look of Emerald
3-Piece Set**

Emerald-like glass stones set in the look of rhodium-plated metal, 16 1/2" L with 3 1/2" extender. Pierced drops, 1 1/4" L. Bracelet: one size fits most. 522-453
reg. \$24.99
\$19.99 the set

**Faux-Gemstone
9-Piece Multi-Pack
Collection**

Nine-pair earring pack with multicolored glass stones set in silvertone. Pierced studs, approx. 1/2".

522-381
reg. \$22.99
\$16.99 the pack

9-pair
earring
pack



evergreen SPLENDOR

NEW! LIMITED EDITION

**Green Beaded
Collection**

Green faceted glass beads with hematite-colored glass beads and accents set in hematite-plated metal.

Layered Necklace

Four-row necklace. 16 1/2" L with 3 1/2" extender. 522-472
reg. \$24.99
\$19.99

**3-Row Stretch
Bracelet Set**

Set of 3. One size fits most. 522-597
reg. \$16.99
\$12.99 the set

Earrings

Pierced drops, 2 1/2" L. 522-563
reg. \$12.99
\$9.99



set of
3 bracelets

set to FÊTE

Festive Ornament Collection

Ornaments: green and red enamel with green and red stone accents; plus ivory faux pearls, goldtone bells and red beads.

Necklace

16 1/2" L with 3 1/2" extender. Charms, 3/4"-1" L. 221-400 reg. \$24.99 \$19.99

Drop Earrings

2 1/4" L. Pierced. 221-510 reg. \$16.99 \$12.99

Stretch Bracelet

One size fits most. Charms, approx. 3/4" L. 221-620 reg. \$19.99 \$14.99

Pin

Green and red enamel with green, red and clear stone accents. 2" L. 221-668 reg. \$19.99 \$14.99



NEW! LIMITED EDITION

Winter Garden Collection

Multicolor glass stones set in goldtone.

Necklace

14 1/2" L with 3 1/2" extender. 266-119 reg. \$84.99 \$64.99

Statement Earrings

2" L. Pierced. 266-229 reg. \$32.99 \$24.99

Stretch Bracelet

One size fits most. 266-123 reg. \$44.99 \$34.99

Statement Ring

Sizes: 6 266-233 8 266-252 10 266-271 reg. \$19.99 \$14.99

Metal Strap Watch

Bracelet watch set in rose goldtone. 8" L with 26mm diam. case. 266-305 reg. \$64.99 \$49.99



NEW! LIMITED EDITION

a touch of ELEGANCE

**Midnight Shimmer
Collection**
Dark blue glass beads.

Lariat Necklace
With glass seed beads.
25½" L with
3½" extender.
Y drop, 5" L.
523-149
reg. \$32.99
\$24.99

Coil Bracelet
With hematite glass beads.
One size fits most.
522-601
reg. \$19.99
\$14.99

Hoop Earrings
1½" diam. Pierced.
523-479
reg. \$12.99
\$9.99



necklace and
earrings set

Mystic Lace Collection
Glass stones with the look of mystic
topaz set in hematite-plated metal.

Stretch Bracelet
One size fits most.
375-543
reg. \$19.99
\$14.99

**Y Necklace and
Earrings Set**
20" L with 3½"
extender. Drop, 2" L.
Pierced studs, ½" L.
375-539
reg. \$22.99
\$16.99 the set

NEW! LIMITED EDITION

12 nights of SPARKLE



pack of 12
earrings,
necklaces and
bracelets

Sparkle and Shine Mega Set

Includes eight pairs of pierced studs, hoops or drops (range from 1/4" to 1/2" diam.; drops, 1" L.); two necklaces (with 3 1/2" extenders) and two bracelets (one size fits most). With a mix of colored stones, clear stone accents or faux pearls set in silvertone or goldtone. **264-723 reg. \$52.99**

\$39.99
pack of 12

12 | C24

Everything Merry 12-Piece Earrings Pack

Mix of colored studs and drops set in silvertone or goldtone. Range from 1/4" to 1/2" L. Pierced.

258-038 reg. \$24.99

\$19.99 the pack



pack of 12
earrings



Wreath (Green)/
Goldtone
219-858

Reindeer (Red)/
Goldtone
219-915

Angel (Green/Red)/
Silvertone
219-972

Wreath
(Green Beads)/
Goldtone
221-122

Reindeer
(Ivory Beads)/
Goldtone
221-141

**Happy Holidays
Collection**
With colored
enamel and clear
pavé or colored
stone accents.

Angel
(Red Beads)/
Silvertone
221-380

Drop Earrings
1" L. Pierced.
reg. \$12.99
\$9.99 each pair

Stretch Bracelet
With the look of
Murano glass
beads and metal-
tone rondelles.
One size fits most.
Charm, approx. 3/4" L.
reg. \$16.99
\$12.99 each

Enjoy special prices and offers with an Avon account or Representative.

C24 | 13

NEW! LIMITED EDITION



Heart/
Goldtone
524-126

Star/
Sivertone
524-460

Heart/
Goldtone
524-437

Cross/
Sivertone
524-441

Oval (Star)/
Sivertone
524-217

Round (Cross)/
Sivertone
524-260

Shaky Pendant Necklace
Pendant with colored stones
and metal-plated accents.
16 1/2" L with 3 1/2" extender.
Pendant, 1" L.
reg. \$16.99
\$12.99 each

**Shaky Motif
Pull-Cord Bracelet**
With colored beads. One size
fits most. Charms, 1/4" to 1/2" L.
reg. \$16.99
\$12.99 each



Amethyst/
Sivertone
523-866

Sodalite/
Goldtone
523-961

Tiger's Eye/
Sivertone
524-111

Tiger's Eye/
Sivertone
524-001

Amethyst/
Sivertone
524-016

Sodalite/
Goldtone
524-069

**Precious Energy
Collection**
With semi-precious
stones.

Hoop Earrings
Approx. 1 1/2" diam.
Pierced.
reg. \$12.99
\$9.99 each pair

Stretch Ring
One size fits most.
Stone, approx. 1/2" W.
reg. \$12.99
\$9.99 each

show your
SPIRIT

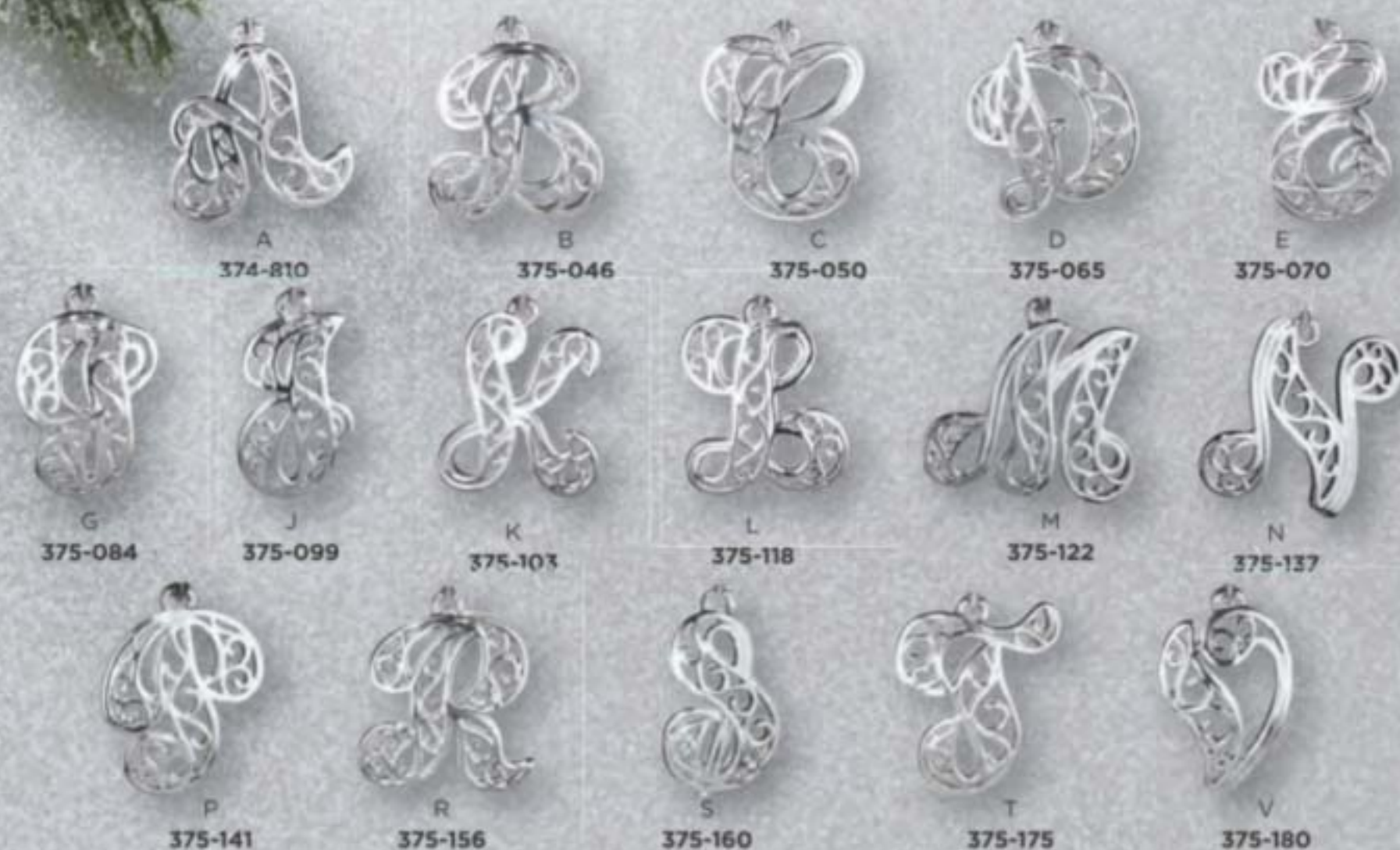
**Shimmer
Hoop Earrings**
Accented with
silver stones.
1 1/2" diam.
Pierced.
Red 375-213
Black 375-194
Clear 375-209
reg. \$16.99
**\$12.99
each pair**

Enjoy special prices and offers with an Avon account or Representative.

NEW! LIMITED EDITION



Filigree Initial Necklace
Domed filigree initial set in silvertone.
Necklace, 16½" L with 3½" extender.
Pendant, 1" L.
reg. \$12.99
\$9.99 each



merry MOMENTS

Scattered Rhinestone Watch

Leatherlike strap, 9" L.
Silvertone case with rhinestone-accented dial, 35mm diam.
Blue **375-471**
Red **375-486**
Black **375-490**
reg. \$53.99
\$42.99 each



necklace, earrings and ring set

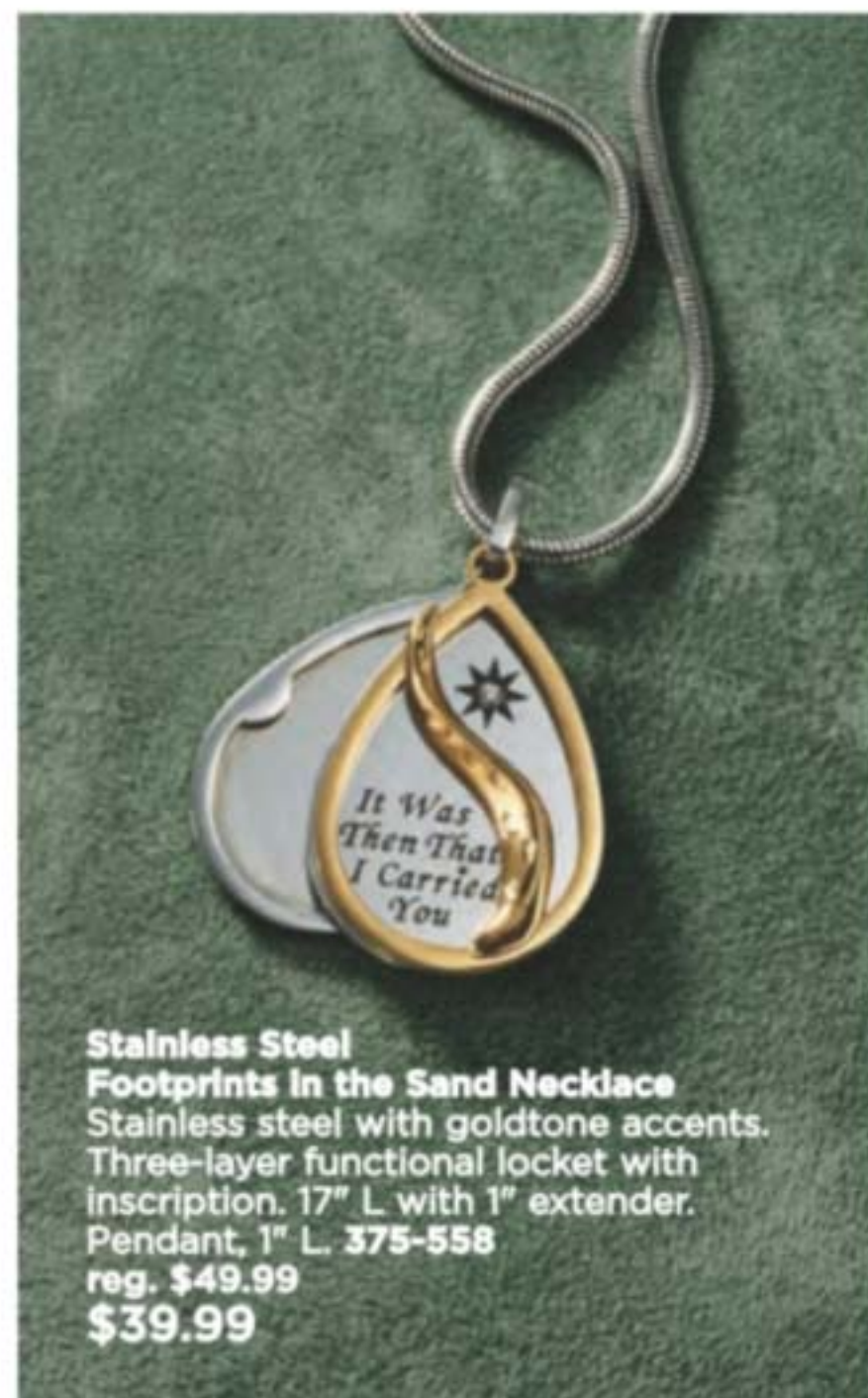
Precious Poinsettia 3-Piece Set
Goldtone with green, red and clear stone accents.
16½" L with 3½" extender.
Pendant, approx. 1" L.
Pierced studs, approx. ½" L.
Ring, approx. ½" W.

Sizes:
6 **375-505**
8 **375-524**
10 **375-510**
reg. \$22.99
\$16.99
3-piece set



**Sterling Silver
Half Eternity
Wedding Band**
With CZs, 1/8" W.
Sizes:
5 375-562 8 375-596
6 375-577 9 375-600
7 375-581 10 375-615
reg. \$49.99
\$39.99

**Sterling Silver
Trinity
Engagement Ring**
1/4" W. CZ stone,
approx. 1.25-carat
weight equivalent.
Sizes:
5 375-620 8 375-668
6 375-634 9 375-672
7 375-649 10 375-687
reg. \$58.99
\$44.99



**Stainless Steel
Footprints in the Sand Necklace**
Stainless steel with goldtone accents.
Three-layer functional locket with
inscription. 17" L with 1" extender.
Pendant, 1" L. 375-558
reg. \$49.99
\$39.99



STERLING SILVER

**Sterling Silver
CZ Cross Necklace**
Sterling silver with
CZ pavé accents.
17" L with 1" extender.
Pendant, 1" L.
524-805
reg. \$69.99
\$54.99

**Sterling Silver
Tree of Life Necklace**
Sterling silver with
genuine amethyst and
clear CZ accents.
17" L with 1" extender.
Pendant, 3/4" L.
524-810
reg. \$69.99
\$54.99

NEW! LIMITED EDITION

time to TREASURE

Women's Crystal Watch
Metal bracelet watch, 8" L.
Jet dial with bezel crystal
stones and glass stone
accents, 32mm diam. case.
524-480
reg. \$64.99
\$49.99



NEW! LIMITED EDITION

RSVP Party!

STUDIO
1886



◆ Velvet Long-Sleeve Dress

Black long-sleeve knee-length dress with scoop neck, smocked waist and zipper closure on back. Polyester/spandex. Center back length: 38" on M; 40" on 1X. Machine wash, dry flat. Imported.

XS(0-2) **369-230**
S(4-6) **369-279**
M(8-10) **369-450**
L(12-14) **369-465**
XL(16) **369-484**
1X(18W-20W) **369-537**
2X(22W-24W) **369-556**
3X(26W-28W) **369-594**
reg. \$66.99
\$52.99

Model is wearing Green Beaded Layered Necklace, sold on page 7.
See chart on page 23.



Model is wearing Shimmer Hoop Earrings, sold on page 15; and Slim Faux-Suede Pant, sold on page 22.

◆ Crushed Velvet Pintuck Tunic

Grey long-sleeve V-neck tunic with button-front placket and pintuck detail. Polyester/spandex. Center back length: 29" on M; 30" on 1X. Machine wash, line dry. Imported.

XS(0-2) **370-298** XL(16) **370-499**
S(4-6) **370-302** 1X(18W-20W) **370-522**
M(8-10) **370-389** 2X(22W-24W) **370-541**
L(12-14) **370-465** 3X(26W-28W) **370-613**
reg. \$53.99
\$42.99

◆ Faux-Leather Blazer

Black blazer with peak lapel and one button closure on front, long sleeves with button detail, slit pockets and back vent. Lined. Polyester/spandex with polyurethane coating. Polyester lining. Center back length: 28" on all sizes. Dry clean only. Imported.

XS(0-2) **445-960** XL(16) **448-477**
S(4-6) **448-386** 1X(18W-20W) **448-921**
M(8-10) **448-405** 2X(22W-24W) **449-000**
L(12-14) **448-462** 3X(26W-28W) **449-014**
reg. \$74.99
\$59.99

Pink top, jeans and earrings are not available.



wrapped in HOLIDAY STYLE

A. ♦ Faux-Fur Trim Cape

Plaid cape with fringe and faux-fur collar. Hook-and-eye closure on front. Body and collar, 100% polyester. Dry clean only. Missy: 56" L x 53" W. Plus: 61" L x 58" W. Imported. Missy **369-924** Plus **369-981** reg. \$64.99 **\$49.99**

B. ♦ Slim Faux-Suede Pant

Black slim-fitting faux-suede pants with elastic waist. Polyester/spandex. Inseam: 28½" on all sizes. Hand wash, line dry. Imported. XS(0-2) **450-048** S(4-6) **450-330** M(8-10) **451-360** L(12-14) **451-446** XL(16) **451-450** 1X(18W-20W) **451-685** 2X(22W-24W) **451-833** 3X(26W-28W) **451-852** reg. \$49.99 **\$39.99**

Model is wearing Sequin Ballet Flat, sold on page 25.

C. ♦ Lace-Sleeve Top

Red long-sleeve top with lace detail, round neck and cuffs. Body: polyester/spandex. Lace: polyester. Center back length: 24½" on M; 26" on 1X. Machine wash, line dry. Imported. XS(0-2) **369-996** S(4-6) **370-044** M(8-10) **370-082** L(12-14) **370-188** XL(16) **370-211** 1X(18W-20W) **370-230** 2X(22W-24W) **370-245** 3X(26W-28W) **370-264** reg. \$49.99 **\$39.99**

D. ♦ Long-Sleeve Sequin Pocket Tee

Black long-sleeve soft V-neck tee with sequin detail on pocket. Rayon/spandex/sequins. Center back length: 22½" on M; 25" on 1X. Machine wash, dry flat. Imported. XS(0-2) **369-609** S(4-6) **369-670** M(8-10) **369-719** L(12-14) **369-742** XL(16) **369-776** 1X(18W-20W) **369-780** 2X(22W-24W) **369-848** 3X(26W-28W) **369-871** reg. \$32.99 **\$24.99**

E. ♦ Sequin Ballet Flat

Silver sequin ballet flat with contrasting black toe cap and wavy cushion insole. Man-made materials. Half sizes, order size up. Imported. 6M **369-030** 9M **369-082** 7M **369-044** 10M **369-097** 8M **369-078** 11M **369-169** reg. \$37.99 **\$28.99**

APPAREL SIZE CHART			
SIZE	BUST	WAIST	HIP
XS 0/2	30.5"-32"	23.5"-25"	32.5"-34"
S 4/6	33.5"-35"	26.5"-28"	35.5"-37"
M 8/10	36.5"-38"	29.5"-31"	38.5"-40"
L 12/14	39.5"-41"	32.5"-34"	41.5"-43"
XL 16	43"-44"	35.5"-36.5"	44.5"-45.5"
1X 18W/20W	46.5"-48.5"	39"-41"	48"-50"
2X 22W/24W	50.5"-52.5"	43"-45"	52"-54"
3X 26W/28W	54.5"-56.5"	47"-49"	56"-58"

Enjoy special prices and offers with an Avon account or Representative.

NEW! LIMITED EDITION

Model is wearing Sunburst Jewelry Collection, sold on Avon.com.





Models are wearing 2-Pack Christmas Socks with Scrunchie, sold on page 25. Size chart on page 23.

❖ Snowflake Sleepshirt

Snowflake-print green Henley-style long-sleeve sleepshirt with front placket and buttons. Polyester/spandex. Center back length: 32" on M; 34" on 1X. Machine wash, line dry. Imported.

XS(0-2) **204-772** XL(16) **205-908**
S(4-6) **205-180** 1X(18W-20W) **205-912**
M(8-10) **205-817** 2X(22W-24W) **205-927**
L(12-14) **205-893** 3X(26W-28W) **207-619**
reg. \$42.99
\$32.99

❖ Candy Cane Striped Pajama Set

Red and white striped long-sleeve round-neck top. Matching pull-on bottom with elastic waistband and side pockets. Includes matching headband. Top and bottom: cotton. Neckline trim: cotton/spandex. Center back length for top: 25½" on M; 27" on 1X. Bottom inseam: 30" for all sizes. Machine wash and dry. Imported.

XS(0-2) **202-909** L(12-14) **203-336** 2X(22W-24W) **203-393**
S(4-6) **203-135** XL(16) **203-340** 3X(26W-28W) **204-768**
M(8-10) **203-321** 1X(18W-20W) **203-355**
reg. \$56.99
\$44.99 the set

O cozy night



NEW! LIMITED EDITION

❖ **Christmas Tree Pajama Set**
Multicolor Christmas tree print, navy blue long-sleeve round-neck top with side slits. Matching pull-on jogger bottom with rib cuff, elastic waistband and side pockets. Includes matching headband. Top and bottom: 100% cotton. Neckline trim and bottom rib cuff: cotton/spandex. Top: center back length: 25½" on M; 27½" on 1X. Bottom inseam: 29½" on all sizes. Machine wash and dry. Imported.

XS(0-2) **230-855**
S(4-6) **232-399**
M(8-10) **232-403**
L(12-14) **232-676**
XL(16) **232-680**
1X(18W-20W) **246-569**
2X(22W-24W) **246-607**
3X(26W-28W) **246-611**
reg. \$56.99
\$44.99 the set



two pairs of socks + hair scrunchie

❖ 2-Pack Christmas Socks with Scrunchie

Red and green Santa and black and red reindeer socks. Comes with red scrunchie with jingle bells. Fits shoe sizes 6-10. Socks: polyester/spandex; scrunchie: 100% polyester. Machine wash and dry (socks only). Imported.

194-177
reg. \$12.99
\$9.99 the set

❖ Whimsical Holiday Slipper

Red faux-sherpa upper with green embroidered Christmas tree and candy cane striped insole. Man-made materials. Imported.

S(5-6) **171-738**
M(7-8) **171-962**
L(9-10) **171-977**
XL(11-12) **171-981**
reg. \$20.99
\$15.99

Enjoy special prices and offers with an Avon account or Representative.

White/Black
S(5-6) 169-473
M(7-8) 169-860
L(9-10) 169-894
XL(11-12) 170-291

❖ **Plaid Button-Detail Slipper**
Plaid upper with matching button detail, black faux-fur lining and trim. Man-made materials. Imported.
reg. \$23.99
\$17.99 each pair

Green/Black
S(5-6) 168-022
M(7-8) 168-037
L(9-10) 168-151
XL(11-12) 168-166

Red/Black
S(5-6) 168-170
M(7-8) 168-792
L(9-10) 169-200
XL(11-12) 169-435

PLAID
tidings!

Enjoy special prices and offers with an Avon account or Representative.



NEW! LIMITED EDITION

A. ❖ Foil-Printed Slipper Bootie
Foil leopard-print upper with faux-fur lining, matching bow and pom-pom detail. Man-made materials. Imported.
reg. \$32.99
\$24.99 each pair

Grey	Tan
S(5-6) 246-755	S(5-6) 246-630
M(7-8) 248-447	M(7-8) 246-650
L(9-10) 248-557	L(9-10) 246-664
XL(11-12) 248-739	XL(11-12) 246-736

B. ❖ Fair Isle Unisex Slipper
Blue-and-white-knit Fair Isle slip-on slipper with grey faux-sherpa lining. Man-made materials. Imported.
S(5-6) 248-800 XL(11-12) 251-330
M(7-8) 249-348 XXL(13-14) 255-942
L(9-10) 251-196
reg. \$22.99
\$16.99

C. ❖ Classic Unisex Slipper
His or hers slip-on slipper with faux-sherpa lining. Man-made materials. Imported.
reg. \$22.99
\$16.99 each pair

Tan
S(5-6) 004-848
M(7-8) 004-829
L(9-10) 004-647
XL(11-12) 004-484
XXL(13-14) 004-465

Black
S(5-6) 004-226
M(7-8) 004-264
L(9-10) 004-374
XL(11-12) 004-412
XXL(13-14) 004-450

Grey
S(5-6) 151-331
M(7-8) 151-350
L(9-10) 151-403
XL(11-12) 151-480
XXL(13-14) 151-547

UNISEX SIZE CHART		
	women	men
S	5-6	↘
M	7-8	5-6
L	9-10	7-8
XL	11-12	9-10
XXL	13-14	11-12



NEW! LIMITED EDITION



wishing you the
WARM + FUZZIES

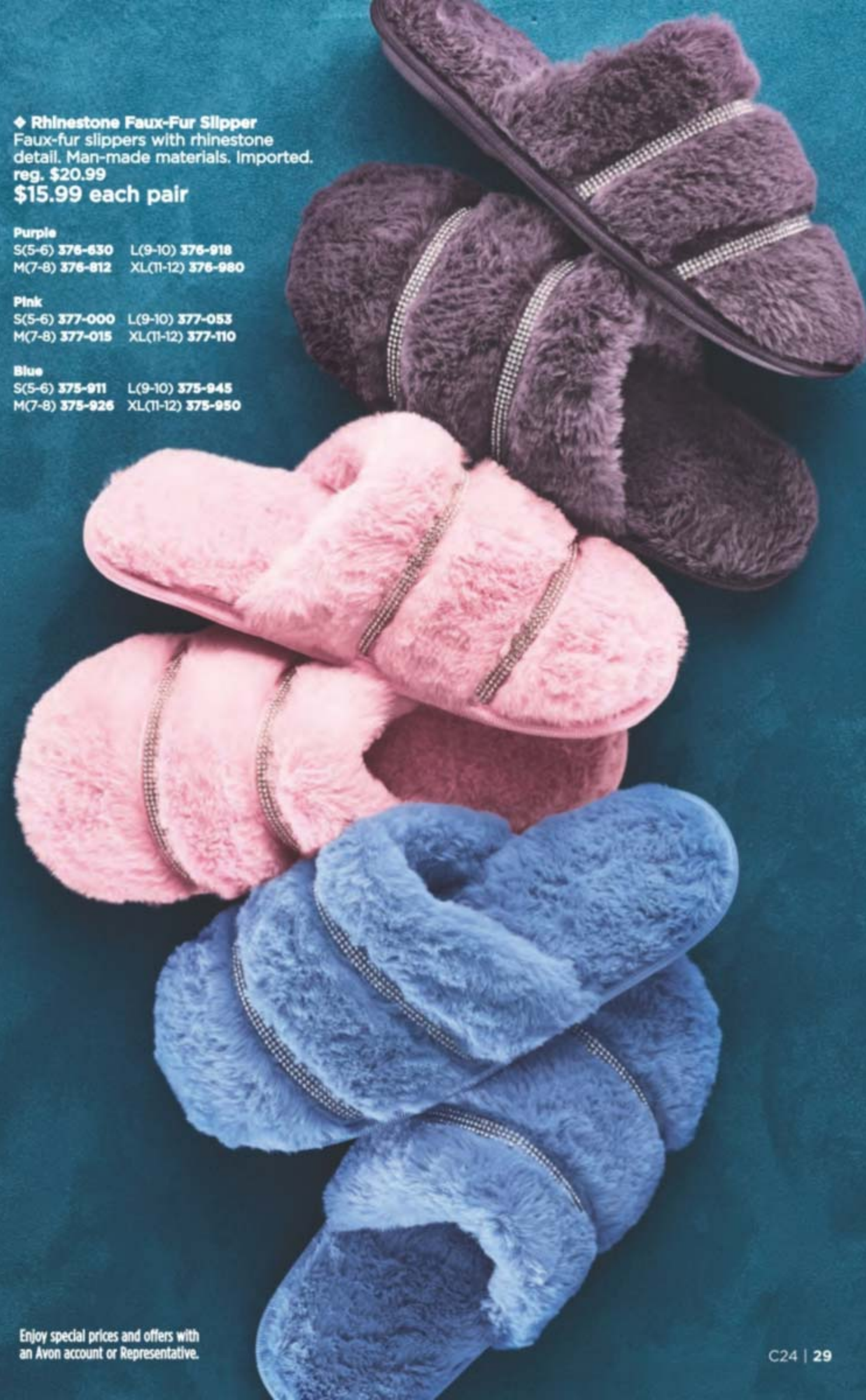


◆ **Rhinestone Faux-Fur Slipper**
Faux-fur slippers with rhinestone detail. Man-made materials. Imported.
reg. \$20.99
\$15.99 each pair

Purple
S(5-6) **376-630** L(9-10) **376-918**
M(7-8) **376-812** XL(11-12) **376-980**

Pink
S(5-6) **377-000** L(9-10) **377-053**
M(7-8) **377-015** XL(11-12) **377-110**

Blue
S(5-6) **375-911** L(9-10) **375-945**
M(7-8) **375-926** XL(11-12) **375-950**



Enjoy special prices and offers with
an Avon account or Representative.

SANTA'S TOY SHOP: open for business



◆ Toy Shop Tabletop Light-Up

Santa and the elves are busy making toys for all the good boys and girls! Center tree spins. Shop lights up. Plays eight holiday tunes (see page 31). Switch for lights, sound and movement, lights with movement or off. Takes three AA batteries (not included) with 4.5V 5000mA DC Jack (adapter not included). 9 1/4" L x 5" W x 9 1/4" H. Polyresin, plastic. Imported. 283-937
reg. \$64.99
\$49.99



DON'T FORGET THE BATTERIES!

◆ Cell Strong Batteries
Alkaline. Not rechargeable.
36 Pack AA Batteries 116-023
36 Pack AAA Batteries 116-980
reg. \$29.99
\$22.99 each pack of 36

NEW! LIMITED EDITION



Santa's
door opens
and closes

PLAYS EIGHT
HOLIDAY TUNES:
We Wish You a Merry Christmas
Hark! The Herald Angels Sing
Jingle Bells
Silent Night
Deck the Halls
Joy to the World
The First Noel
O Christmas Tree



◆ Santa in Stocking Tabletop Light-Up

Santa's door opens and our jolly friend pops out, ready to go! Stocking house, tree and street lamps light up. Switch for lights, sound and movement, lights with movement or off. Takes three AA batteries (not included) with 4.5V 5000mA DC jack (adapter not included). 9 1/4" L x 5" W x 9 1/2" H. Polyresin, plastic. Imported.
539-125
reg. \$64.99
\$49.99



❖ **Holiday Hills Ski Land Light-Up**

Christmas at the ski resort! Skiers shush down and head back up for more thrills. Lights up and plays eight holiday tunes (see page 31). Switch for lights, sound and movement, lights with movement or off. Takes three AA batteries (not included) with 4.5V 5000mA DC jack (adapter not included). 7½" L x 7¼" W x 9¼" H. Polyresin, plastic. Imported. **278-559** reg. \$64.99 **\$49.99**



NEW!
LIMITED EDITION

❖ **Holiday Church Tabletop Light-Up**

O come all ye faithful! Church and town square light up. Center Christmas tree spins. Plays eight holiday tunes (see page 31). Switch for lights, sound and movement, lights with movement or off. Takes three AA batteries (not included) with 4.5V 5000mA DC jack (adapter not included). 9¼" L x 5" W x 9½" H. Polyresin, plastic. Imported. **281-767** reg. \$64.99 **\$49.99**



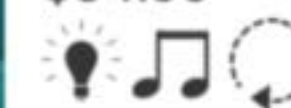
❖ **Santa's Midnight Sleigh Ride Light-Up**

Santa's ready to ride! The jolly ol' elf and his tiny reindeer dash up and down over our bottle brush forest. Trees and sleigh light up. Plays eight holiday tunes (see page 31). Switch for lights, sound and movement, lights with movement or off. Takes three AA batteries (not included) with 4.5V 5000mA DC jack (adapter not included). 8¾" L x 5" W x 12½" H. Polyresin, plastic. Imported. **278-525** reg. \$64.99 **\$49.99**



❖ **Holiday Hills Swing Light-Up**

Swing into the holidays! Child swings back and forth as Santa looks on and skaters take a turn around the rink. Trees light up. Plays eight holiday tunes (see page 31). Switch for lights, sound and movement, lights with movement or off. Takes three AA batteries (not included). 7½" L x 7¼" W x 9¼" H. Polyresin, plastic. Imported. **281-733** reg. \$69.99 **\$54.99**





Santa
013-519

Snowman
012-728

❖ **Sledding Christmas Shelf Sitter Light-Up**

Santa and his snowman buddy are ready for holiday fun! Cheeks light up on each character. On/off switch. Takes two AA batteries (not included). Each, 10" L x 4 1/2" W x 11 1/2" H. Polyester, metal. Imported.

reg. \$34.99
\$26.99 each



❖ **Over the Door Santa Greeter Light-Up**

Motion-sensor Santa greets guests with a twinkle in his cheeks. Hangs over the door. Cheeks light up. On/off switch. Takes three AA batteries (not included). 24" L x 20" W x 2" H. Polyester. Imported.

282-209
reg. \$44.99
\$34.99



*Greets guests and says:
"Merry Christmas to all,
and to all a good night!"*

NEW! LIMITED EDITION

A. ♦ Countdown to Christmas Plush

Our snowman is counting it down! Inflatable interior and base with snowman fabric overlay, detachable scarf and felt candy cane. Move the candy cane each day in December as it gets closer to Christmas. Some assembly required. Foot pump included. 15" L x 11" W x 28" H. Polyester, plastic. Imported.

014-606
reg. \$49.99
\$29.99



A

Stands 28" tall!

B

Stands 25" tall!

B. ♦ Sledding Christmas Greeter Light-Up

Let's go sledding! Sled lights up. Santa's hands can be secured to sled with hook and loop. On/off switch. Takes two AA batteries (not included). Sled: 7 1/2" L x 2 1/2" W x 19 1/2" H. Santa: 10" L x 4" W x 25" H. Wood, polyester. Imported.

014-352
reg. \$58.99
\$49.99



◆ **Woodland Winter Village Light-Up**
Sculpted woodland scene with back-lit filigree design creates a cozy silhouette of our fave festive friends. On/off switch. Takes two AAA batteries (not included). 13 1/4" L x 2" W x 8 3/4" H. MDF wood. Imported. **283-980**
reg. \$49.99
\$39.99



◆ **Bright Moments Bottle Brush Tree Set Light-Up**
Quintessential bottle brush Christmas trees with holiday lights. Each takes three AA batteries (not included). On/off switch. Each, 3" diam. Small: 6" H; medium: 7 1/4" H; large: 10 1/4" H. Plastic, metal. Imported. **238-291**
reg. \$39.99
\$29.99 set of 3



◆ **Bright Moments Inspirational Pewter Ornament**
Embossed with the 2023 Avon Fine Collectibles stamp on back. Includes velvet keepsake pouch and easy-to-hang tassel. 2 1/8" W x 2 3/4" L. Pewter, polyester. Imported. **234-573**
reg. \$20.99
\$15.99



◆ **Christmas Tree Village Set**
Let's head to the village tree stand 'cause it's time to pick out the Christmas tree! Lights up. Takes three AA batteries. On/off switch. Tree stand: 5 3/4" L x 4" W x 7" H; pickup truck: 5 1/4" L x 2 1/2" W x 2 3/4" H; side trees: 3" L x 2" W x 2" H. Polyresin, plastic. Imported. **282-854**
reg. \$58.99
\$49.99 3-piece set

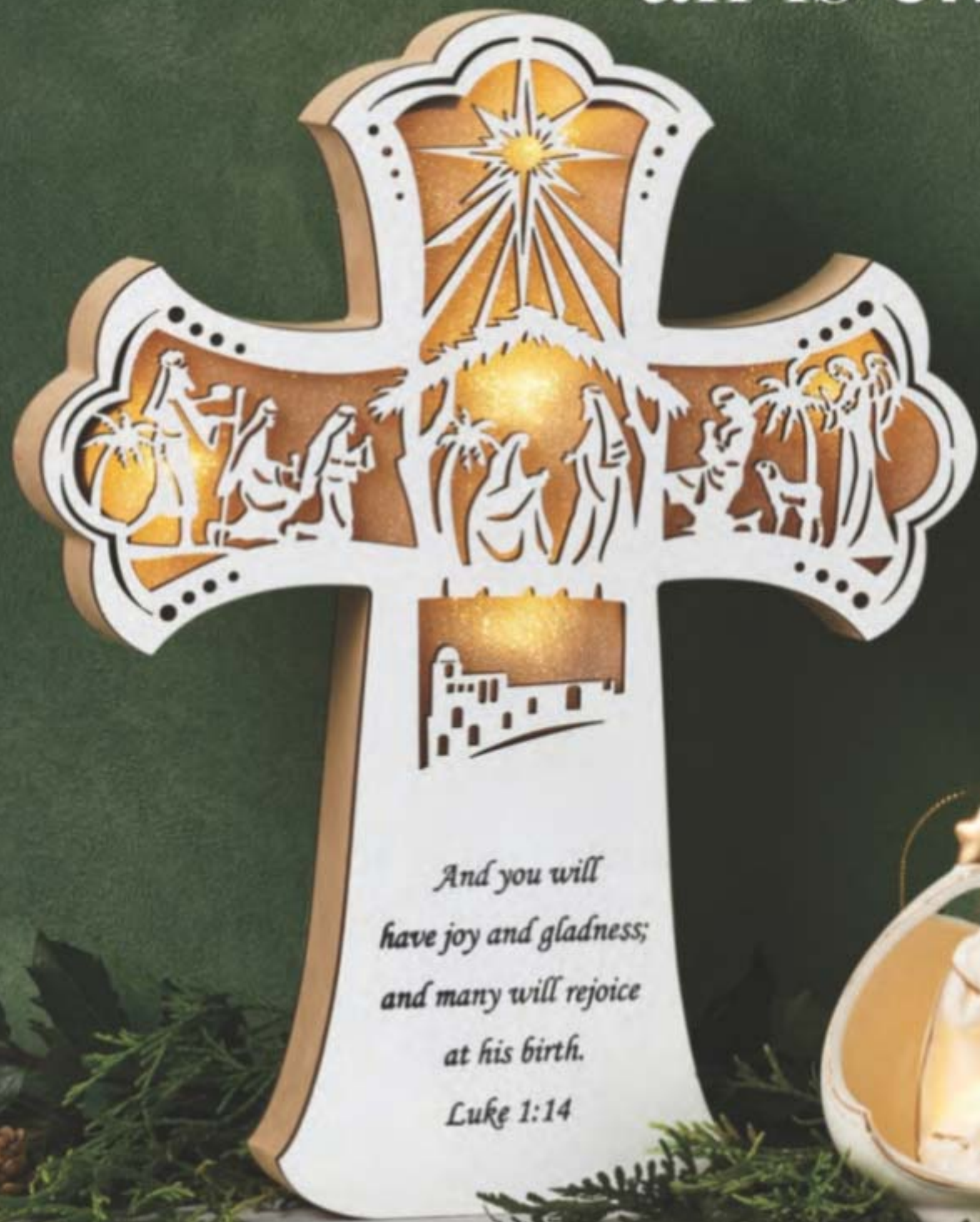


◆ **Bright Moments Hurricane Glass Set Light-Up**
Houses and snowflakes light up. Each takes three AA batteries (not included). On/off switch. Each, 3 1/2" diam. Small: 4" H; large 8" H. Glass. Imported. **234-611**
reg. \$32.99
\$24.99 set of 2

◆ **Bright Moments Glass Tree Light-Up**
Santa is on the scene! Lights up and plays eight holiday tunes (see page 31). Takes three AA batteries (not included). Switch for lights only, lights and sound or off. Glass, plastic, resin. 4" diam. x 10 1/2" H. Imported. **235-584**
reg. \$39.99
\$29.99



all is CALM... all is BRIGHT



◆ **Season's Blessings Cross Light-Up**

Back-lit nativity scene with an inscription from Luke 1:14: "And you will have joy and gladness; and many will rejoice at his birth." Can be hung up or placed on a flat surface. On/off switch. Takes two AAA batteries (not included). 10" L x 1½" W x 13" H. MDF wood, plastic. Imported. **284-020**

reg. \$44.99
\$34.99



◆ **Holy Family Ornament Light-Up**

Mary, Joseph and baby Jesus light up the Christmas tree. On/off switch. Takes three LR44 button cell batteries (Included). 3½" L x 3" W x 4½" H. Porcelain. Imported. **284-034**

reg. \$16.99
\$12.99



◆ **Peace on Earth Faux-Candle Light-Up**

Let there be peace on Earth! Flameless light flickers inside. On/off switch. Takes two AA batteries (not included). 4¾" L x 4¾" W x 6½" H. Porcelain, plastic. Imported. **284-049**

reg. \$32.99
\$24.99



◆ **Peace on Earth Angel Light-Up**

Hark! The herald angels sing! With a goldtone "Peace" charm, our angel shimmers with glowing stars on her gown. Flameless light flickers inside. On/off switch. Takes two LR44 button cell batteries (included). 5" L x 3¼" W x 11" H. Porcelain, metal. Imported. **283-994**

reg. \$39.99
\$30.99



holiday open house



7 Days of Avon Beauty

Celebrate the season with seven makeup and skin care must-haves! Each door opens to a beautiful surprise! Paperboard, 7 1/4" W x 2" D x 12 7/8" H.
163-069 reg. \$66
\$29.99
7-piece set

Includes:

- Isa Knox LXNEW Ultimate Rejuvenating Day Cream Mini, .5 fl. oz.
- fmg LOVE at 1st Lash Mini Mascara in Blackest Black, .13 fl. oz.
- fmg Glimmer Lip Plumper, .3 fl. oz.
- Isa Knox LXNEW Ultimate Rejuvenating Serum Mini, .23 fl. oz.
- fmg Glimmer Diamonds Eyeliner in Black Ice, .01 oz. net wt.
- fmg Glimmer Lip Glaze in Flash, .3 fl. oz.
- Farm Rx Super Greens Refreshing Gel Cleanser Mini, 1 fl. oz.



NEW!
LIMITED
EDITION

fmg Eye Moment Palette

Multi-finish eyeshadow palette to create your best holiday eyes! Includes 10 sensational shades in satin, shimmer, glitter and matte finishes, mirror and brush applicator. Each, .03 oz. net wt.
reg. \$35
\$22 each

fmg Glimmer Wish for a Kiss

Thirty of our best-selling fmg Glimmer Satin Lipstick shades in take-to-every-party sample sizes housed in a cute keepsake metal tin. Comes in gift box. Each, .021 oz. net wt.

Includes shades:

Luna, Wild Rose, Rose Angel, Sierra Sunset, Poppy, Violet Night, Hibiscus, Firebolt, Thunderbird, Fog, Eclipse, Aster, Wild Cherry, Tulip, Constellation, Morning Glory, Plum Blossom, Desert Moon, Equinox and Twilight.

164-031 reg. \$100

\$29.99

31-piece set

Enjoy special prices and offers with an Avon account or Representative.



NEW! LIMITED EDITION

fmg Glimmer Pout Perfect Mini Lipstick Gift Set

Perfect your pout with a trio of cult-fave fmg Glimmer Satin mini lipsticks. Comes in gift box. Each, .04 oz. net wt.

Includes shades:

- Luna
- Plum Blossom
- **Holiday Set Exclusive!** French Rose

164-490 reg. \$36

\$29.99

3-piece set



fmg Expert Tips Nail Art Tool Kit

Merry your mani and get nails in tip-top shape with this handy kit!

Includes:

- Foam nail buffer block, 7" L.
- Nail buffer, 7" L.
- Two nail files, each, 7" L.
- Cuticle pusher, 5" L, stainless steel.
- Dual-ended marbling and dotting tool, 4" L, metal alloy.
- Cuticle cutter, stainless steel.
- Nail clipper, 2 1/2" L, stainless steel.
- Storage box, 7 1/2" L x 3 1/2" H, plastic.

006-970 reg. \$30

\$16

9-piece set



After you prep, add some nail color, sold on page 92!

nifty + gifty

fmg Mini Makeup Essentials Kit

Your must-have merry makeup essentials all ready to go for every holiday event.

Includes:

- **Holiday Set Exclusive!** fmg Glimmer Duo Eyeshadow Compact, .14 oz. total net wt.
- fmg LOVE at 1st Lash Mini Mascara in Blackest Black, .13 fl. oz.
- fmg Glimmer Mini Satin Lipstick in Wild Rose, .04 oz. net wt.
- Be Blushed Cheek Color in Blushing Nude, .14 oz. net wt.
- Clear Green Pouch, Zippered, 4 3/4" L x 4 3/4" H x 4" D. PVC. Imported.

163-460 reg. \$55

\$40

5-piece set



VDL Expert Slim Glow Lip Balm Special Edition Set

Sparkle through the holidays and beyond with supersoft lips and hands! Comes in gift box.

Includes:

- VDL Expert Slim Glow Lip Balm in Pink Sparkle, .08 oz. net wt.
- VDL Lumilayer Perfumed Hand Cream in rose and peony scent, 1.01 oz. net wt.

168-018 reg. \$28.99

\$19.99

2-piece set



Enjoy special prices and offers with an Avon account or Representative.



**MEN'S
FRAGRANCE
ESSENTIALS**
GIFT SET | COFFRET-CADEAU



Men's Fragrance Essentials Gift Set
fresh aromatic
Elevate your fragrance experience
with our best-selling classics!
Comes in gift box.

- Includes:**
- **Black Suede Eau de Toilette**,
Bergamot, soft leather and
oakmoss. 3.4 fl. oz.
 - **Wild Country Cologne**,
Lavender, coriander seed
and sandalwood. 3 fl. oz.
 - **Wild Country Aftershave Splash**,
4 fl. oz.
- 217-195 reg. \$57
\$29.99
3-piece set

magnifiSCENTS!

NEW! LIMITED EDITION



HAIKU
SERENITY
GIFT SET | COFFRET-CADEAU

Haiku Serenity Gift Set
fresh green floral
Delight in the serenity of a beautiful
Japanese garden, blooming with
Japanese yuzu, delicate muguet and
blonde woods. Comes in gift box.

- Includes:**
- **Haiku Eau de Parfum**, 1.7 fl. oz.
 - **Haiku Hair & Body Mist**, 3.25 fl. oz.
 - **Haiku Intense Travel Spray**, .3 fl. oz.
- 217-161 reg. \$57
\$29.99
3-piece set

Enjoy special prices and offers with an Avon account or Representative.

ho, ho, HYDRATION!



belif in wonder holiday set

Celebrate explosive hydration!
One full-size fave plus two minis.
Limited-edition kit includes:

- The True Cream Moisturizing Bomb, 1.68 fl. oz.
- Aqua Bomb Hydrating Body Moisturizer, 1.01 fl. oz.
- Moisturizing Eye Bomb, .16 fl. oz.

Comes in festive holiday gift box.
208-562 reg. \$42

\$38

3-piece set



belif glow on the go holiday travel kit

Five must-have mini sizes.
Limited-edition kit includes:

- The True Cream Moisturizing Bomb, .33 fl. oz.
- The True Cream Aqua Bomb, .33 fl. oz.
- Moisturizing Eye Bomb, .16 fl. oz.
- Aqua Bomb Hydrating Toner, .67 fl. oz.
- Aqua Bomb Jelly Cleanser, 1.01 fl. oz.

Comes in festive holiday gift box.
210-736 reg. \$30

\$23

5-piece kit

holiday BESTIES

The Face Shop

x earp earp

Herb Day 365

Foaming Cleanser

Trio Trial Kit

Mini daily cleansers infused with naturally derived herbal and fruit extracts. Each, 2 fl. oz. Boxed set includes:

- **Lemon & Grapefruit**
Freshen oily skin.
- **Acerola & Blueberry**
See a clearer complexion.
- **Aloe & Green Tea**
Hydrate dry skin.

904-947 reg. \$11

\$8.40

3-piece kit



The Face Shop

x earp earp

Best Sellers Set

Three skin care beauties, all in one cute kit.

Boxed set includes:

- **The Therapy Vegan Blending Cream**
Lower layer of emulsified cream with an upper layer of oil-gel cream. .33 fl. oz.
- **Rice Water Bright Foaming Cleanser**
Gently moisturizing foam with rice extract. 1.01 fl. oz.
- **Real Nature Rice Face Mask**
Brightening and softening sheet mask with rice extract. 7 oz. net wt.

918-060 reg. \$10

\$8

3-piece kit



The Face Shop x earp earp

Real Nature Mask Sheet Set

With naturally derived ingredients.

10 single-use sheet masks.

Each, .7 oz. net wt. Boxed set includes:

- **Honey mask** Hydrates for an extra glow.
- **Aloe and Potato masks** Hydrate and soothe.
- **Lemon and Rice masks** Brighten.
- **Avocado and Green Tea masks** Hydrate.
- **Red Ginseng, Blueberry and Pomegranate masks** Help firm.

900-717 reg. \$11

\$8.80

10 masks

NEW! LIMITED EDITION



Isa Knox LXNEW Ultimate Day and Night Gift Set
With peony extract, plus niacinamide and panthenol. See younger skin blossom. Full-size day and night creams. Comes in gift box.

Includes:
• **Rejuvenating Day Cream**, 1.7 fl. oz.
• **Rejuvenating Dual Night Cream** Volume Cream/Firming Cream. Each, .85 fl. oz.
213-716
reg. \$100
\$39.99
2-piece set

GIVE beautifully

Farm Rx Skin De-Stressing Gift Set
Visibly improve wrinkles. Plus, massage with the relaxing wand to help ease facial tension. Comes in gift box.

Includes:
• **Farm Rx Bakuchiol Serum**, 1 fl. oz.
• **Farm Rx Bakuchiol Cream**, 3.04 fl. oz.
• **Holiday Set Exclusive! Acupressure Wand**
Lightly massage T-shaped end of wand upward to enhance absorption of serum and cream.

213-807
reg. \$106
\$35
3-piece set



winter DELIGHTS

Avon Senses Strawberry White Hot Chocolate Winter Bath Collection

An indulgent treat for your winter body care routine. Soften your skin all over while you enjoy the fresh and fruity scent of luscious strawberries with the silky sweetness of decadent white chocolate.



Body Lotion
Smooths and softens with moisture-rich shea butter and vitamin E. 8 fl. oz.
150-320 reg. \$17
\$10.99

Bubble Bath
Sweet and refreshing, delicious bubbles. 16.2 fl. oz.
150-373 reg. \$11
\$7.99

♦ **Candle**
One wick. Soy-wax blend. 3" diam. x 3 1/2" H. Burn time, 40 hours. 7 oz. net wt.
150-392 reg. \$18
\$12.99

Hair & Body Mist
With aloe vera extract, leaves hair and skin feeling refreshed. 8 fl. oz.
150-369 reg. \$18
\$10.99

YOUR GIFT is served



**Daily Moments
Vegan Hand Cream
Holiday Set**
Includes three
of your favorites.
• **Midnight Street**
A sensual fragrance infused
with luscious fruit notes.
• **Sunset Rooftop**
A cool fragrance infused
with a touch of sweetness.
• **Morning Florist**
A floral fragrance featuring
fresh rose blooms.
Each, 1.0 fl. oz.
Comes in gift box.
217-817 reg. \$9.99
\$6.99
3-piece set

**Mini-Size
Holiday Hand Cream**
Can't decide? Get them both!
Each, 1.7 fl. oz. reg. \$3
\$2.49 each

**Skin So Soft
Pear and Freesia**
217-200

**Moisture Therapy
Soothing and Hydrating**
Fragrance-free.
217-750



great
stocking
stuffers!



Bath Bomb Ornament
Hang 'em on your
Christmas tree. Then run
'em under water in your
tub and unwind with
warm winter scents!
Each, 1.6 fl. oz. reg. \$10
\$8 each

Star
(Coconut Milk)
150-426

Christmas Tree
(Brown Sugar)
150-411



A. Anew Ultimate

Multi-Performance Eye System

Visibly smooths crow's-feet and de-puffs under-eye bags. Cream, .5 oz. net wt. Elixir, .09 oz. net wt.

854-433 reg. \$42
\$27.99

B. Anew Ultimate Multi-Performance

Day Cream Broad Spectrum SPF 25

You'll see wrinkles fade and youthful vibrance return. 1.7 oz. net wt.

763-307 reg. \$42
\$27.99

C. Anew Ultimate

Night Repair Serum

With peptides, licorice, hyaluronic acid and niacinamide. Diminishes the appearance of fine lines and visibly improves skin tone and texture. Use PM before moisturizer. 1 fl. oz.

625-355 reg. \$45
\$26.99

D. Anew Ultimate

Multi-Performance Night Cream

It works while you sleep to revive and recreate the look of youthful skin. 1.7 oz. net wt.

763-311 reg. \$42
\$27.99

E. Anew Ultimate Supreme Eye Balm

Infused with squalane, sunflower seed oil and antioxidant vitamin E. Moisturizing formula. Wear alone or under makeup. 0.1 oz. net wt.

625-340 reg. \$45
\$26.99



Anew Ultimate Supreme Dual Elixir

Follow with Advanced Performance Crème. Serum/Oil, .67 fl. oz. each.

588-421 reg. \$60

Anew Ultimate Supreme

Advanced Performance Crème

With Black Pearl Extract.

See a dramatic difference in deep wrinkles and skin radiance.

1.7 oz. net wt.

014-735

reg. \$60

\$38.99

each



ANEW Ultimate Regimen Set

Includes three full-size moisturizers plus one try-it-size serum.

• **Multi-Performance Day Cream Broad Spectrum SPF 25**
1.7 oz. net wt.

• **Multi-Performance Night Cream**
1.7 oz. net wt.

• **Multi-Performance Eye System**
Cream, .5 oz. net wt.
Elixir, .09 oz. net wt.

• **Anew Power Serum**
.24 fl. oz.

4-PIECE
BOXED KIT

923-228

reg. \$128

\$54.99



Anew Platinum

Age Delay Serum

With niacinamide (vitamin B3) and panthenol (pro-vitamin B5), plus peptides that help visibly boost elasticity and lift facial contours for a more youthful look. Use AM and PM before moisturizer. 1 fl. oz.

625-609
reg. \$45
\$26.99



NEW

Anew Platinum

Sculpting Body Serum

With niacinamide, panthenol (pro-vitamin B5) and powerful peptides, effective anti-aging ingredients known to help boost moisture, leaving skin looking firmer, smoother and more youthful. 6.7 fl. oz.

506-249 reg. \$45
\$26.99



Anew Platinum

Firm and Sculpt Cream for Neck and Chest

With Peptide Lifting Complex. For skin on your neck and chest, vulnerable to sagging. Use PM after cleansing.

1.7 oz. net wt.
763-584 reg. \$42
\$27.99



Anew Platinum Night Cream

Skin appears smoother overnight, resculpted over time. 1.7 oz. net wt.

753-439
reg. \$42
\$27.99



Anew Platinum Eye & Lip Cream

Visibly smooths and reshapes the area around eyes...and lips, too! Dual applicator.

.5 oz. net wt.
328-072
reg. \$42
\$27.99



Anew Platinum

Day Cream Broad Spectrum SPF 25

Fight gravity...or sun damage? With this cream, you can do both.

1.7 oz. net wt.
184-146
reg. \$42
\$27.99



Anew Platinum Regimen Set

Includes three full-size moisturizers plus one try-it-size serum.

• **Day Cream Broad Spectrum SPF 25**
1.7 oz. net wt.

• **Night Cream**
1.7 oz. net wt.

• **Eye & Lip Cream**
.5 oz. net wt.

• **Anew Power Serum**
.24 fl. oz.

4-PIECE BOXED KIT

923-467 reg. \$128

\$54.99



Anew Power Serum

Visibly improves wrinkles, radiance, firmness and texture.

Use AM and PM after cleansing, as your treatment before moisturizing.

1 fl. oz.
417-187
reg. \$45
\$26.99



FREE

Isa Knox LXNEW Ultimate Rejuvenating Eye Serum with any \$40 skin care purchase, pages 54-78. \$50 value. Sold separately on page 56. Limited quantities.

ISA KNOX LXNEW ULTIMATE Rejuvenating collection



Isa Knox LXNEW Ultimate Rejuvenating Multi-Corrector
Luxurious paeonol-infused serum with niacinamide and panthenol to help visibly address key signs of aging. Skin looks smoother and more youthful. Pat into areas prone to fine lines and wrinkles before moisturizer. 1.7 fl. oz. **496-595**
reg. \$50
\$34.99

Isa Knox LXNEW Ultimate Rejuvenating Serum
With paeonol and ceramides, visibly improves elasticity, radiance and skin texture, and reduces the appearance of wrinkles. 1.35 fl. oz. **756-624** reg. \$56
\$44.99



Isa Knox LXNEW Ultimate Rejuvenating Eye Serum
Infused with paeonol and niacinamide to help visibly reduce fine lines around the eye area and depuff under-eye bags. 1 fl. oz. **567-177**
reg. \$50
\$39.99



Isa Knox LXNEW Ultimate Rejuvenating Balm Stick
With peony extract, plus a firming complex featuring castor, moringa and argan oils. Apply to forehead, eyes and neck, or anywhere you want extra care. .24 fl. oz. **267-593**
reg. \$24
\$19.99



Isa Knox LXNEW Ultimate Rejuvenating Day Cream
With paeonol, visibly reduces wrinkles and improves the look of elasticity, radiance and skin texture. With nutmeg to help visibly even skin tone. 1.7 fl. oz. **351-892**
reg. \$50
\$39.99



Isa Knox LXNEW Ultimate Rejuvenating Dual Night Cream
With paeonol and macadamia oil. Volume Cream: Rice bran extract helps visibly plump skin. Firming Cream: Helps boost collagen and elastin. Each, .85 fl. oz. **564-015**
reg. \$50
\$39.99



ISA KNOX LXNEW PLATINUM Sculpting collection

Innovative formulas with organic hibiscus extract help skin look lifted from every angle



Isa Knox LXNEW Platinum Sculpting Oil Serum
Hibiscus extract-infused serum, with rejuvenating peptides and antioxidants. Skin looks firmer and more lifted. 1.35 fl. oz. **318-720** reg. \$56
\$44.99

Isa Knox LXNEW Platinum Sculpting Day Cream
Infused with moisturizing hibiscus extract and smoothing ceramide. Visibly tightens facial contours. 1.7 fl. oz. **318-845** reg. \$50
\$39.99

Isa Knox LXNEW Platinum Sculpting Night Cream
With firming hibiscus extract, ceramide, squalane and shea butter. Skin looks firmer, smoother and more defined. 1.7 fl. oz. **318-850**
reg. \$50
\$39.99

Isa Knox LXNEW Platinum Sculpting Eye Cream
With hibiscus extract, panthenol and antioxidants. Leaves the delicate eye area looking firmer, brighter and more defined. .84 fl. oz. **318-883**
reg. \$50
\$39.99

Isa Knox LXNEW Platinum Sculpting Neck and Chest Cream
With hibiscus extract, ceramide, shea butter, panthenol and squalane to help vulnerable skin along the neck and chest appear firmer, smoother and lifted. 1.7 fl. oz. **548-069**
reg. \$50
\$39.99



SKIN CARE COLLECTIONS save on all your faves

CLEANSERS & HAND CARE SET

Silicone Glove Protective Hand Cream
3.4 fl. oz.

Isa Knox LXNEW Clean 2-in-1 Exfoliating Cleansing Balm
3.5 oz. net wt.

Isa Knox LXNEW Clean Balancing Gel Cleanser
5 fl. oz.

3-PIECE SET
\$39.99
\$48 VALUE
380-060



SMOOTH & MOISTURIZE SET

Farm Rx Green Goddess Cream
3.04 fl. oz.

Isa Knox Anew Clinical Collagen Booster Microneedling Polisher
1.7 fl. oz.

Isa Knox Anew Clinical Line Eraser with Retinol [1.0%] Advanced Retinol Serum
1 fl. oz.

3-PIECE SET
\$39.99
\$128 VALUE
380-113



CLEANSE ROUTINE PLUS SET 1

the true cream aqua bomb aloe
1.69 fl. oz.

Herb Day 365 Amino Acid Cleansing Foam - Aloe
5.7 fl. oz.

Rice Water Bright Facial Massage Cream
6.7 fl. oz.

3-PIECE SET
\$34.99
OVER \$77 VALUE
380-257



ISA KNOX LXNEW ULTIMATE SET

Isa Knox LXNEW Ultimate Rejuvenating Balm Stick
.24 fl. oz.

Isa Knox LXNEW Ultimate Rejuvenating Day Cream
1.7 fl. oz.

2-PIECE SET
\$32.99
\$74 VALUE
855-076



CLEANSE ROUTINE PLUS SET 2

Daily Moment Vegan Hand Cream - Midnight Street 1 fl. oz.

Rice Water Bright Mild Cleansing Water 16.9 fl. oz.

Rice Water Bright Foaming Cleanser 10 fl. oz.

Rice Water Bright Cleansing Facial Wipes 50 sheets.

4-PIECE SET
\$19.99
OVER \$42 VALUE
380-166



CALENDULA PLUS SET

Calendula Essential Moisture Cream 1.69 fl. oz.

Calendula Essential Moisture Serum .67 fl. oz.

Calendula Essential Moisture Eye Cream .67 fl. oz.

Rice Water Bright Foaming Cleanser 5 fl. oz.

4-PIECE SET
\$21.99
OVER \$47 VALUE
380-424



Isa Knox Anew Clinical Line Eraser with Retinol Targeted Treatment

In just one week, the look of deep lines is smoothed and resurfaced. Use PM. .67 fl. oz. 729-397 reg. \$40 \$23.99

Isa Knox Anew Clinical Line Eraser with Retinol Treatment
Great for first-time retinol users. Use AM/PM. 1 oz. net wt. 729-382 reg. \$45 \$27.99



Isa Knox Anew Clinical Collagen Booster Eye Lift Pro Dual Eye System

With a peptide complex to help boost skin renewal. In one week, eye area looks lifted, firmer and tighter. Gel, .33 fl. oz. Cream, .33 fl. oz. 729-435 reg. \$40 \$23.99



Isa Knox Anew Clinical Collagen Booster Microneedling Polisher
At-home alternative to micro-dermabrasion and micro-needling procedures. Visibly diminishes pores, fine lines and wrinkles. Skin looks smoother and more radiant. 1.7 fl. oz. 798-592 reg. \$34 \$19.99



Isa Knox Anew Clinical Line Eraser with Retinol [1.0%] Advanced Retinol Serum

Our highest dose of retinol. Dramatically reduces the appearance of fine lines, wrinkles and dark spots. 1 fl. oz. 390-751 reg. \$50 \$39.99



100% showed clinical improvement of fine lines and wrinkles in one week, with increased results over time.

Isa Knox Anew Clinical Collagen Booster Firming Cream

With peptides that boost skin renewal to help to visibly firm skin and restore youthful bounce. Also infused with moisturizing and skin-plumping niacinamide and squalane. For optimal results, apply following Rejuvenating Serum Ampoules. Hygienic, airless pump. 1.7 fl. oz. 069-327 reg. \$45 \$27.99



Isa Knox Anew Clinical Collagen Booster Rejuvenating Serum Ampoules

Powerful peptide blend boosts skin renewal. 60 capsulated single-use ampoules. .008 fl. oz. each. 803-077 reg. \$62.50 \$49.99



Isa Knox Anew Clinical Revitalize & Reveal Extra Strength Retexturizing Peel

Results similar to a 35% pro glycolic peel.* 30 fragrance-free pads. 2" diam. 729-420 reg. \$40 \$23.99

*In 6 out of 8 attributes tested over a 7-week period.



Isa Knox Anew Clinical Revitalize & Reveal Advanced Wrinkle Corrector

In just two weeks, wrinkles appear reduced. 1.7 fl. oz. 914-576 reg. \$40 \$23.99



Isa Knox Anew Clinical Revitalize & Reveal Resurfacing Expert Smoothing Fluid

79% as effective as a pro micro-dermabrasion without the same irritation. 1 fl. oz. 852-282 reg. \$44 \$27.99



Isa Knox Anew Clinical Revitalize & Reveal Intensive Peel

An intensive resurfacing peel similar to pro acid peels. With AHA and PHA. 1 fl. oz. 780-025 reg. \$45 \$27.99



Isa Knox Anew Clinical Revitalize & Reveal Resurfacing Lotion for Body
Exfoliates with gentle yet effective AHA lactic acid. Moisturizes with shea butter. 5 fl. oz. 390-785 reg. \$34 \$19.99



Skinvincible Deep Recovery Cream

Lessens the look of age damage in weeks. Use PM. 1 oz. net wt. 290-351 reg. \$40 \$23.99



Avon Solutions Nurtura Replenishing Cream

Adds moisture to dry skin. 1.7 fl. oz. 908-263 reg. \$14 \$9.99



Avon Solutions Anti-Aging Cream
Moisturizing formula works to visibly smooth the appearance of fine lines and wrinkles. 1.7 fl. oz. 906-681 reg. \$14 \$9.99



Avon Solutions Dramatic Firming Cream

Skin looks and feels smoother. 1.7 fl. oz. 374-657 reg. \$14 \$9.99



Avon Solutions Banishing Cream Skin Discoloration Improver

Visibly improves skin tone. 2.5 fl. oz. 463-374 reg. \$14 \$9.99



Avon Care Silicone Glove Protective Hand Cream
Lasting protection from dryness. 3.4 fl. oz. 366-887 reg. \$6 \$2.69



Anew Vitamin C Overnight Radiant Mask

Visibly improves texture and boosts radiance. Apply after cleansing, treating and moisturizing.

1.7 fl. oz.
157-086
reg. \$36
\$19.99



Anew Vitamin C Warming Peel

With vitamin C flakes and natural seeds, exfoliates with a warming sensation.

3.4 fl. oz.
936-425
reg. \$27
\$15.99



Anew Vitamin C Brightening Serum

Skin is visibly energized and brightened with the power of 10% pure vitamin C. 1 fl. oz.

522-066
reg. \$44
\$24.99

Anew Vitamin C Nourishing Body Butter

With hydrating shea butter and sodium PCA, enriched with niacinamide, helps restore radiance with vitamins C and E to defend against free radical damage.

Uplifting fruity-floral and citrus scent. 7.8 fl. oz.

443-767 reg. \$32
\$17.99

Anew Vitamin C Glow Body Scrub

Sugar-based formula with pineapple and papaya enzymes and coffee seed extract exfoliates dry, dull skin, while a blend of sunflower seed and sweet almond oils replenishes moisture. Refreshing citrus scent.

9 oz. net wt.
443-752 reg. \$36
\$19.99



Anew Vitamin C Illuminating Priming Moisturizer

With natural citrus extracts. Wear alone or under makeup. 1.7 fl. oz. 868-508 reg. \$34 \$18.99

Anew Vitamin C Brightening Eye Cream

Visibly reduces dark circles. Leaves under-eye area looking brighter and more even-toned. .5 fl. oz. 868-512 reg. \$34 \$18.99

Anew Vitamin C Antioxidant Lip Treatment

Nourishes lips with vitamins C and E. .13 oz. net wt.

784-547
reg. \$14
\$7.99



Anew Vitamin C Illuminating Body Serum

Light-reflecting pigments leave skin looking luminous. 6.7 fl. oz. 157-071 reg. \$34

\$19.99



100% mineral sunscreen with no white cast!

Isa Knox Anew Solaire Everyday Mineral Face Protection Cream Broad Spectrum SPF 50

Lightweight formula with zinc oxide. Suitable for sensitive skin. Water-resistant (40 minutes). 1.7 fl. oz.

437-143
reg. \$29
\$22.99



Isa Knox Anew Solaire Everyday Face Protection Lotion Broad Spectrum SPF 50

Creamy lotion formula. Wear alone or under makeup. 1.7 fl. oz.

911-400
reg. \$29
\$22.99



Isa Knox Anew Solaire Active Face & Body Protection Lotion Broad Spectrum SPF 50

Water-light formula glides on smoothly all over face and body. 2.7 fl. oz. 154-948 reg. \$31

\$24.99

HYDRA FUSION

Anew Hydra Fusion Nighttime Facial Treatment
Visibly plumps skin. Increases moisture by 3X. Relaxing rose scent. 1.7 oz. net wt. **139-429**
reg. \$34
\$18.99



Anew Hydra Fusion Gel Cream
Skin appears smoother, refreshed and plumped with lasting hydration. 1.7 oz. net wt. **266-893**
reg. \$34
\$18.99



Anew Hydra Fusion 1.5% Hyaluronic Acid Serum
With three different molecular sizes of HA that reach multiple layers of skin's surface to visibly plump skin. 1 fl. oz.
290-390
reg. \$44
\$24.99



Anew Hydra Fusion Cleansing Micellar Water
Gently lifts dirt, oil and makeup while boosting hydration. No need to rinse off. 10.1 fl. oz.
139-380
reg. \$14
\$8.99



Anew Hydra Fusion De-Puffing Eye Serum
With caffeine and a cooling ceramic tip. Instantly boosts hydration around the eye area by 3X. Eyes look and feel refreshed. .5 fl. oz. **137-737**
reg. \$34
\$18.99

ISA KNOX LXNEW CLEAN



normal to dry skin
Nourishing Cream Cleanser
With panthenol (vitamin B5), rosemary and soapwort extracts. Removes impurities and makeup while restoring moisture. 5 fl. oz.
717-990 reg. \$12
\$9.99

normal, dry and combination skin
Balancing Gel Cleanser
Gel to foam. With panthenol (vitamin B5). Amino acid-based ingredients derived from coconut help remove oil and impurities while rebalancing skin. 5 fl. oz.
718-010 reg. \$12
\$9.99

oily to normal skin
Soothing Whipped Oil Cleanser
Amino acid-based ingredients derived from coconut eliminate impurities and excess oil. With panthenol (vitamin B5) and aloe. 5 fl. oz.
718-025 reg. \$16
\$12.99

normal, dry, combination and oily skin
2-in-1 Exfoliating Cleansing Balm
Melts away makeup and impurities. With panthenol (vitamin B5) and bamboo stem powder. Spatula included. 3.5 oz. net wt.
718-006 reg. \$30
\$24.99

Cleansing Brush
Includes one brush head. Requires two AA batteries (not included).
679-266
reg. \$47
\$28.99



NEW

Farm Rx Pineapple Plus Radiance Boosting Mask

With natural alpha hydroxy acid, plus an antioxidant-rich fruit complex to help skin look smoother and more radiant. 3 fl. oz. **456-266 reg. \$37 \$27.99**

Farm Rx Pineapple Plus Instant Glow Toner

Revitalizing toner helps visibly minimize pores. Use AM and PM after cleansing. 5 fl. oz. **027-382 reg. \$25 \$17.99**

Farm Rx Pineapple Plus Brightening Jelly Serum

Helps improve dull, dry skin and reduce the appearance of fine lines, wrinkles and pores. Skin looks radiant. 1 fl. oz. **027-440 reg. \$44 \$32.99**



Farm Rx Amazon Berry Boost Moisturizing & Firming Mask

Ultra-moisturizing face mask with acai berry, Brazil nut oil plus murumuru and cupuaçu butters. Helps skin look firmer, smoother and tighter. 3 fl. oz. **413-052 reg. \$37 \$27.99**



Farm Rx Amazon Berry Boost Smoothing & Firming Body Cream

With moisturizing and nourishing Brazil nut oil plus murumuru and cupuaçu butters. 5 fl. oz. **027-655 reg. \$25 \$17.99**



Farm Rx Super Greens Multivitamin Moisture Cream

Locks in essential nourishing moisture. Use daily after cleansing, serums and treatments. 3.04 fl. oz. **314-141 reg. \$37 \$27.99**

Farm Rx Super Greens Cooling Gel

Lightweight moisturizer helps soothe and cool skin. As needed, after serum apply a thicker layer as a mask to hydrate overnight. 3.04 fl. oz. **354-227 reg. \$37 \$27.99**

Farm Rx Super Greens Nourishing Cleansing Balm

Helps boost moisture barrier as it dissolves makeup and impurities. For normal, dry, combination, oily and sensitive skin types. 3.3 fl. oz. **516-944 reg. \$41 \$30.99**

Farm Rx Super Greens Refreshing Gel Cleanser

With soothing aloe. Convenient pump. Eco-friendly packaging and glass bottle. Use AM/PM. 8.11 fl. oz. **913-049 reg. \$25 \$17.99**

Farm Rx Super Greens Refreshing Gel Cleanser Refill*

Includes two refills. 16.9 fl. oz. **913-053 reg. \$37 \$27.99**

*Not shown.

Farm Rx Super Greens Refreshing Eye Cream

With nourishing Super Greens formula, plus cucumber extract. Hydrates and helps skin feel soothed. Green tea helps visibly de-puff. 1 fl. oz. **412-826 reg. \$31 \$22.99**



NEW

Farm Rx Super Greens Trial Kit

Includes two try-it sizes:
• Cooling Gel, 1.7 fl. oz.
• Multivitamin Moisture Cream, 1.7 fl. oz.
496-270 reg. \$25 \$17.99





95% natural

Farm Rx Green Goddess Cream
100mg CBD. Helps soothe and visibly reduce redness. Use AM/PM after serum. For added radiance, follow with Facial Oil. 3.04 fl. oz. **338-027**
reg. \$44
\$32.99

Farm Rx Green Goddess High Dose Serum
300mg CBD. Skin feels softer and soothed. Use AM/PM after cleansing, before CBD cream or facial oil to visibly boost results. 1 fl. oz. **338-031**
reg. \$50
\$37.99

Farm Rx Green Goddess Facial Oil
100mg broad spectrum CBD. Suitable for sensitive skin. Rich in omega acids and vitamin E. Use AM/PM after cleansing and serum. Fragrance-free. 1 fl. oz. **934-733** reg. \$50
\$32.99

99% natural

Farm Rx Bakuchiol Serum
Concentrated lightweight oil-textured formula penetrates skin's surface to target fine lines, wrinkles and dullness without irritation. 1 fl. oz. **247-417**
reg. \$44
\$32.99



Farm Rx Bakuchiol Eye Cream
Visibly reduces dark circles, fine lines and wrinkles without irritating the delicate eye area. 1 fl. oz. **565-834**
reg. \$37
\$27.99



Farm Rx Bakuchiol Cream
Moisturizing cream with bakuchiol, a plant-based alternative to retinol that you can use during the day. Visibly reduces wrinkles. Vegan. Hypoallergenic. Suitable for sensitive skin. 3.04 fl. oz. **004-044**
reg. \$44
\$32.99



THE FACE SHOP Jeju Aloe

Jeju Aloe Refreshing Face Mask
With soothing aloe, helps hydrate and nourish dry winter skin. Single-use mask. 1.01 fl. oz. **069-480**
reg. \$3
\$2.50



Jeju Aloe Fresh Soothing Foam Cleanser
Gentle gel-to-foam formula hydrates as it cleanses. With soothing aloe, moisturizing panthenol and other refreshing herbal extracts such as cica, camellia leaf, licorice root and rosemary. 5 fl. oz. **450-090**
reg. \$11.99
\$9.99



Jeju Aloe Fresh Soothing Gel
With 95% aloe vera extract, instantly hydrates and soothes dry, sensitive skin. Infused with other soothing herbal extracts, like chamomile, lemon balm, rosemary and lavender. For face and body. 10.1 fl. oz. **984-304** reg. \$8
\$6.99



Jeju Aloe Fresh Ice Soothing Gel
3-in-1 gel with aloe vera extract. Use as moisturizer, soothing after-sun care or facial pack. Refrigerate for enhanced cooling. Apply to dry, sensitive, irritated areas of face and body. 10.1 fl. oz. **925-402**
reg. \$11
\$8.99




NEW

Jeju Aloe Body Wash
Helps moisturize dry skin while it cleanses, leaving skin feeling nourished. Light aloe scent. 13.5 fl. oz. **069-509** reg. \$12
\$8.99

NEW

Jeju Aloe Hand and Body Lotion
With aloe vera extract, known to calm and soothe irritated skin and dry hands. Clinically proven to help dry skin feel nourished for 48 hours. 13.5 fl. oz. **069-441** reg. \$12
\$8.99

**Rice Water Bright
Light Facial Cleansing Oil**

Removes every trace of makeup and gently cleanses impurities on skin. With jojoba oil and rice water extract, known to visibly brighten and moisturize skin. 5 fl. oz. 720-199 reg. \$14 \$11.99

**Rice Water
Bright
Facial
Cleansing
Lotion**

Rice bran oil helps brighten skin. Gently removes makeup and impurities. 6.76 fl. oz. 720-184 reg. \$12 \$9.99

**Rice Water Bright
Facial Massage Cream**

With rice water, enriched with vitamins, ceramide and minerals. Use after cleansing 2-3 times a week. 6.7 fl. oz. 450-200 reg. \$24 \$19

**Smaller Size!
Rice Water Bright
Foaming Cleanser**

Same formula as the 10 fl. oz. Rice Water Bright Foaming Cleanser in a more convenient size for your medicine cabinet. 5 fl. oz. 478-479 reg. \$8 \$6.49

**Rice Water Bright
Mild Cleansing Water**

Removes makeup and impurities with micelles, so no need to rinse off! Use with a cotton pad. 16.9 fl. oz. 288-360 reg. \$14.40 \$12

**A. Rice Water Bright
Foaming Cleanser**

Light whipped foam leaves skin feeling cleansed and refreshed. With rice water and soapwort extract. Skin looks clear and bright. 10 fl. oz. 508-093 reg. \$13 \$11

**B. Rice Water Bright
Rice Bran Gentle Exfoliating Cleanser**

Daily scrub with organic rice bran powder, rice bran oil and hydrated silica. 10 fl. oz. 376-865 reg. \$15.99 \$12.99

**C. Rice Water Bright
Cleansing Facial Wipes**

Great on the go. With rice extract to moisturize while cleansing. Removes eye makeup. 50 sheets. 508-108 reg. \$11 \$9



Toner

Balancing. AM/PM, use after cleansing, before serum and moisturizer. 5 fl. oz. 124-142 reg. \$8.25 \$6.80

Emulsion

Replenishing. Semi-liquid. AM/PM, after cleansing or toning, before serum, moisturizer. 5 fl. oz. 876-976 reg. \$8.25 \$6.80

Cream

Moisturizing. AM/PM, after cleansing, toning and serum. 1.69 fl. oz. 124-635 reg. \$9.25 \$7.60

Rice & Ceramide Trial Kit

Moisturizing skin care set replenishes and refreshes your look. Try all three, or to use as a complete travel kit. Three-piece boxed mini sizes. Includes: Toner, 1.15 fl. oz. Emulsion, 1.15 fl. oz. Cream, 0.34 fl. oz. 543-617 reg. \$8.75 \$7.20 the kit



Herb Day 365 Amino Acid Facial Foaming Cleanser
Vegan mild hypoallergenic cleanser with cica. Formulated for optimal pH balance. For a moisturized and comforted feeling without tightness, even after cleansing. Each, 5.7 fl. oz. reg. \$11.50
\$9.60 each

Peony
Helps visibly boost skin clarity, and helps hydrate and soothe skin.
546-229

Aloe
Helps moisturize and soothe dry, itchy skin.
544-393



Herb Day 365 Master Blending Facial Foaming Cleanser - Mung Bean & Mugwort
For trouble-prone skin. Formulated with naturally derived herbal and fruit extracts, and coconut-derived moisturizing ingredients. Free of synthetic colorants and parabens. 5.7 fl. oz. **135-093** reg. \$5.25
\$4.40



Herb Day Cleansing Tissue
Removes makeup and impurities. With soapwort, lady's mantle, lily, chamomile and cornflower. 70 sheets. **134-450** reg. \$5.75
\$4.80



Calendula Essential Moisture
Daily skin care for irritated and sensitive skin. With moisturizing calendula extract, a soothing herb complex, and the ultimate hydrator, hyaluronic acid.

A. Serum
A moisturizing and soothing serum that helps calm skin and enhance hydration. 1.35 fl. oz. **980-533** reg. \$13.50
\$11.20

B. Eye Cream
A lightweight, non-greasy, moisturizing and soothing eye cream. .67 fl. oz. **409-823** reg. \$12.50
\$10.40

C. Cream
A moisturizing cream that instantly hydrates while it gently helps soothe dry, itchy, irritated skin. 1.69 fl. oz. **465-400** reg. \$13.50
\$11.20



**The Face Shop
Rich Hand V Special Care Hand Mask**
Coated masks contain nourishing lotion with sunflower seed oil and urea for instant moisturization. Two disposable masks, one for each hand. **541-724 reg. \$4 \$3**



The Face Shop Smile Foot Mask
Disposable foot mask with naturally moisturizing urea, shea butter and collagen for baby-soft feet! Refreshes with peppermint oil. Contains two masks, one for each foot. **535-957 reg. \$4.79 \$3.99**



Give your hands a moment of scented bliss

**Daily Moment
Vegan Hand Cream**
Deeply moisturizing daily vegan hand cream with a long-lasting scent. Eco-friendly and vegan-certified. Each, 1.0 fl. oz. **reg. \$4 \$3.29 each**

1—Sunrise Bedroom
Bergamot, lavender and cedarwood. **741-940**

2—Morning Florist
Lemon, Bulgarian rose and violet leaf. **741-955**

3—Noon Park
Grapefruit, hyacinth and iris. **754-636**

4—Sunset Rooftop
Pear, rose and patchouli. **757-931**

5—Midnight Street
Cassis, rose and amber. **762-334**

6—Dawn Attic
Orange blossom, pimento and vetiver. **762-353**



**explosive hydration...
all over!**



BELIEVE IT!

3 steps in 1
balm → cream → oil

melts away makeup and impurities
while cleansing skin with hydration

**aqua bomb
makeup removing
cleansing balm**
*For dryness, dullness
& uneven texture*
Gently removes all traces of
makeup in one step. Smooth and
refreshing like sherbet. With lotus
flower and marshmallow root, herbs
known to help boost moisture and
radiance. No oily residue. For a
double cleanse, follow with
aqua bomb jelly cleanser. 3.3 fl. oz.
**443-179 reg. \$46
\$38**

BELIF believe in truth for your skin

**aqua bomb
hydrating body moisturizer**
*For dryness, dullness &
uneven skin tone*
A favorite lightweight gel
moisturizer with lady's
mantle, an herb known for
its antioxidant and soothing
benefits—now for your body.
Intense hydration for visibly
firmer, clearer and brighter
skin. Silky finish. For all skin
types. 10.13 fl. oz.
**443-040 reg. \$36
\$30**

BELIEVE IT!
93%
**of people agreed skin
appears smoother***

*Based on a clinical study.

belif believe in truth
**Aqua bomb
hydrating body moisturizer**
With skin brightening niacinamide
Instantly hydrates with a
soft, lightweight gel texture!
Leaves skin feeling
smooth, not sticky?
Mineral oils
Synthetic
fragrances
Synthetic
organic dyes
Animal origin
ingredients
Dermatologically tested
*With 2 Napiers formulas,
hyaluronic acid, niacinamide
*The numbers represent percentage
of ingredients added*



**the true cream
aqua bomb**
*For dryness, dullness
& uneven texture*
Water-based
refreshing gel-cream
cools and hydrates.
(Full size not available.)
Try-it size, .84 fl. oz.
**235-713 reg. \$24
\$22**



**the true cream
moisturizing bomb**
*For dryness, loss of
elasticity & firmness*
Creamy, cushiony, whipped
texture, envelops skin
with intense moisture.
Full size, 1.68 fl. oz.
**948-463 reg. \$42
\$38**
Try-it size, .84 fl. oz. (not shown)
**498-139 reg. \$24
\$22**



**the true cream
aqua bomb aloe**
*For redness, irritation
& dryness*
Moisturizing gel-cream
with aloe vera extract to
instantly soothe skin, plus
hydrating hyaluronic acid
and smoothing vitamin E.
1.69 fl. oz.
**788-284 reg. \$42
\$38**



BELIEVE IT!

96%
of people said their
skin felt hydrated
after cleansing*

aqua bomb jelly cleanser
For dryness, dullness
& uneven texture
Jelly to foam. Amino acids
and glycerin-based cleansing
agents gently cleanse.
5.41 fl. oz. **445-353 reg. \$35**
\$30

*Based on a clinical study.

**aqua bomb
hydrating toner**
For an extra boost
of hydration
Lightweight
water-based toner,
with hyaluronic
acid, honeysuckle
flower extract and
baobab tree seed
extract. Leaves
skin looking soft
and smooth
with a healthy-
looking glow. Use
after cleansing,
before serum and
moisturizer.
6.75 fl. oz.
952-974 reg. \$36
\$30



moisturizing eye bomb
For dryness, loss of
elasticity & firmness
Lightweight, refreshing eye
cream cools on contact.
Helps keep eye area looking
firm, resilient and smooth.
.84 fl. oz. **445-478 reg. \$53**
\$48



aqua bomb sleeping mask
For dull, dry, fatigued skin
Unique jelly-pudding texture!
Skin feels replenished
overnight. Explosive hydration
for smoother skin and a
healthy glow. 2.53 oz. net wt.
514-717 reg. \$42
\$38



Mission Luxereve Cream
Perfect for dry skin.
With luxurious oils and other
moisturizing ingredients for
a more youthful, sculpted
appearance. Use AM/PM,
after Mission Luxereve Serum.
In AM, follow with sunscreen.
1.76 oz. net wt.
635-740 reg. \$350
\$280



**Mission
Luxereve
Lotion**
Lightweight
hydration ideal
for normal skin.
Improves the
appearance of
elasticity and
firmness, and
helps even tone
and texture.
Use AM/PM,
after Serum.
In AM, follow
with sunscreen.
3.77 oz. net wt.
**713-459
reg. \$95**
\$80



**Mission
Luxereve
Serum**
Deluxe
regenerating
serum
formulated
to help boost
skin elasticity
and firmness.
Use AM/PM,
before
moisturizing
with Cream
or Lotion.
1.01 fl. oz.
**635-754
reg. \$225**
\$180



**Avon Pure
Roll-On De-Stress
Essential Oil**
With lavender
and peppermint.
Apply directly
on skin. Instantly
transform your
day. Contains
sweet almond
oil, a carrier oil.
.34 fl. oz.
**098-963
reg. \$24**
\$19



Avon Pure Diffuser
LED light-up
diffuser with three
different settings
releases a fine
mist of essential
oil and water into
the air so that you
can easily fill your
space with the
essence of
the oils. 6 1/2" H.
USB connection.
**915-424
reg. \$39**
\$32



**Avon Pure
Essential Oil Case**
Fits up to 48
essential oils and
roll-ons. Man-made
material with easy
maintenance. Two
padded stackable
trays for added
protection of glass
bottles. Includes
handle and
all-around zipper.
8 1/4" L x 6 1/8" W
x 7 1/2" H. **179-470
reg. \$51**
\$41



**Avon Pure Ceramic
Aroma Diffuser**
Premium ceramic.
Whisper-quiet.
Also functions
as a humidifier.
BPA-free plastic
water reservoir.
Auto shutdown on
timer or when the
water runs out.
6.8 fl. oz. capacity.
Approx. 3 3/4" diam.
x 6 3/4" H. **141-846
reg. \$71**
\$57



re:tune

INNER BEAUTY*

Feel good on the inside
so you can look great
on the outside.

ANTI-AGING ANTIOXIDANTS

Neutralize free radicals
and defend skin from
the look of aging



re:tune Inner Beauty Youth Boost
With ingredients that help improve
the clarity and hydration of skin
while boosting antioxidant levels to
help skin better defend itself from
the look of aging.* 60 tablets.
456-137
reg. \$34
\$28



RE:TUNE INNER BEAUTY feel good inside, look great outside

re:tune Inner Beauty HydraBoost
Helps boost hydration and visibly
soften lines with hyaluronic acid.*
30 vegetarian capsules.
122-761
reg. \$34
\$28



re:tune Inner Beauty Clear Complexion
Supports a visibly clear, even complexion.
Helps balance the gut microbiome.*
30 capsules.
123-332
reg. \$36
\$30



re:tune Inner Beauty Hair, Skin & Nail Health
Promotes a healthy response to skin stressors
while helping build healthy hair, skin and nails.*
60 tablets.
396-908
reg. \$42
\$33



re:tune Inner Beauty Metabolism Boost
A natural, plant-based energy and
metabolism booster that helps you burn
more calories.** 60 vegetarian capsules.
907-195
reg. \$35
\$28



re:tune Inner Beauty Hydration
Supercharge your water for optimal hydration
and more energy, and to boost skin health.
Contains electrolytes, B vitamins and
antioxidants.* Berry flavor. 20 packets.
966-140
reg. \$27
\$22



re:tune Inner Beauty Hunger Block
Helps reduce your food cravings for hours.*
60 vegetarian capsules.
906-920
reg. \$31
\$25



*These statements have not been evaluated by the Food and Drug Administration. This product is not intended to diagnose, treat, cure or prevent any disease. **With reduced dietary intake and exercise.

**HELLO,
LIP LOVERS
SAVE UP
TO 30%!**

pages 83-87

**FIND YOUR
POWER COLOR**

GLIMMER SATIN LIPSTICK



Enticing and inspiring spectrum of versatile and expressive shades.

fmg Glimmer Satin Lipstick
Lightweight, smooth and creamy formula. Infused with antioxidant pomegranate extract. Buildable medium-to-full coverage. Soft satin finish. .10 oz. net wt. reg. \$11
\$7.69



Aurora
726-584

 Desert Moon 449-803	 Stellar 726-550	 Windstorm 883-845
 Cyclone 890-566	 Twilight 449-822	 Sierra Sunset 890-805
 Luna 895-170	 Equinox 449-818	 Honeyflower 726-531
 Aster 448-769	 Poppy 897-651	 Blaze 896-880
 Dahlia 726-350	 Constellation (Shimmer) 449-731	 Wild Cherry 449-708
 Plum Blossom 449-765	 Rose Angel 897-939	 Aurora 726-584
 Hibiscus 898-021	 Wildflower 898-040	 Eclipse 448-740
 Wildrose 898-533	 Tulip 449-712	 Celestial 895-352
 Morning Glory 449-750	 Violet Night 898-548	



Good Housekeeping
Magazine 2022
Beauty Award Winner

**fmg Cashmere
Essence Lipcream**
Plant-based Bio-Retinol,
known for effective anti-
aging properties without
the harsh irritation,
improves lip hydration
and protection. With
ginseng cell extract,
antioxidant meadowfoam
seed oil and vitamin E.
High-shine finish.
.11 oz. net wt. reg. \$22
\$15.49



Lush color and shine.

fmg Cashmere Rouge Lacquer
High-performance all-day wear.
Dual-ended. Full-coverage color
dries quickly without feathering.
Moisturizing top coat locks color
in place for a high-shine finish.
Transfer-, smudge- and feather-proof.
.20 oz. total net wt. reg. \$22
\$15.49



Mauvelous 334-681



Featured
shade: fmg
Cashmere
Essence in
Summer Berry.

GLIMMER LIP

Get your lips ready
for prime time!

**fmg Glimmer
Lip Polish**
Sugar-based formula
gently buffs away dry,
flaky skin for softer,
smoother lips. Helps
polish and prepare
lips for effortless
color application.
A blend of vitamin E,
moisturizing squalane,
and extracts of blueberry,
strawberry and raspberry
leaves lips feeling supple,
pampered and kissably
soft. .35 oz. net wt.
**\$94-677 reg. \$14
\$8.99**



Drench lips in dimensional
color and shine.

fmg Glimmer Lip Glaze
Non-sticky creamy formula
gives hours of wear without
feathering. With antioxidant
vitamin E. Buildable sheer-to-
medium coverage.
.3 fl. oz. reg. \$11
\$6.99



Gleam 691-198



Keep your
pout soft and
kissable!

**fmg Glimmer
Lip Conditioner**
With mango seed
butter, vitamin E,
and jojoba and
sunflower seed oils.
Leaves dry, cracked
lips feeling soft
and smooth.
.12 oz. net wt.
**794-578
reg. \$12
\$8.29**



Brightens lips and cheeks.

fmg Glimmer Lip & Cheek Stain
Highly pigmented shades that
wear all day. Lightweight gel
formula blends and builds like a
dream, providing the perfect pop
of gorgeous luminous color. Brush
tip applicator. Transfer-proof. Free
from parabens and fragrance.
Vegan. .19 fl. oz.
reg. \$14
\$9.99



Plumeria
628-851



Prevents feathering.

fmg Glimmer Lipliner*
Long-wearing. Retractable.
Matte finish. .01 oz. net wt.
reg. \$9
\$4.99



Passion Red
327-650



*Packaging may vary.

BUTTER ME UP



Luscious lip butter, high-shine gloss and sheer color all in one!

fmg LOVE Lip Butter

Ultra-creamy formula, infused with nourishing cupuaçu seed butter, mango extract and apricot kernel and olive fruit oils, leaves lips feeling soft and kissable with intense moisture and shine. Non-sticky. Buildable coverage. Click pen applicator delivers right amount of color. Vanilla scented. Free from parabens, sulfates and phthalates. .09 oz. net wt. **reg. \$17 \$12.99**



Featured shade:
fmg LOVE Lip Butter In
Love Affair.

LIP

Deeply moisturizing lip oil.

TPSY Drunk Shiny Lip Oil

Instantly absorbed. A tint of color that matches every lip. No residue. No stickiness. Infused with jojoba, argan and castor oils. .13 oz. net wt. **reg. \$15 \$10.49**



My Boo
495-216

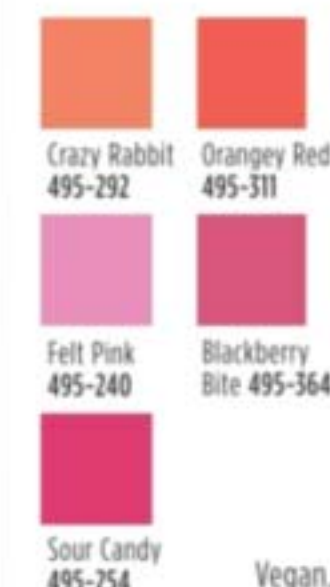
Get kiss-ready with the perfect partner.

TPSY Forever Lip Marker

Hydrating formula that stays on lips all day. Unique marker design allows for easy application. Kiss-proof. .08 fl. oz. **reg. \$15 \$10.49**



Sour Candy
495-254



Sour Candy
495-254

Vegan. Earth-friendly packaging.

A nude pout for every party.

fmg Glimmer Birthday Balm Lip Crayon
Butter-soft balm with a sheer color and shine. .1 oz. net wt. **reg. \$12 \$8.99**



PYT 375-691

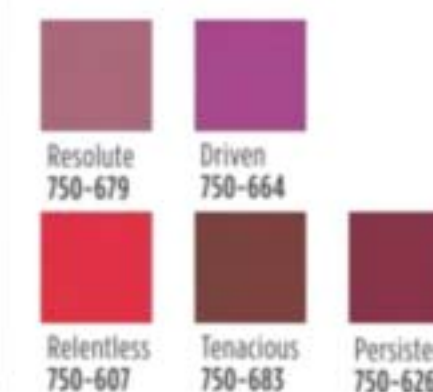


A burst of vivid color with a featherlight feel and velvety soft matte finish.

Mattitude Liquid Lip

Weightless, non-drying formula that lasts for hours. Poppy seed oil and vitamin E nourish lips. Paraben-, sulfate- and phthalate-free. .13 fl. oz. **reg. \$13 \$8.99**

Driven 750-664



Enjoy special prices and offers with an Avon account or Representative.

LASHES + BROWS

Lash-hugging heart-, flower- and cylinder-shaped lengthening fibers for voluminous, waterproof wear.

LOVE at 1st Lash Waterproof Mascara

Love Waterproof Complex™ with Lashrez, olive oil and vitamin E. Transfer-resistant. Clump-, flake- and smudge-proof. .3 fl. oz. **Waterproof Blackest Black 293-805** reg. \$15 **\$12.99**

cobra brush lifts & curls



Ultrafine felt tip sculpts, fills and shapes brows and enhances your look to perfection.

TPSY Snatched Brow & Freckle Marker

Long-wearing formula. Free from parabens and talc. .01 oz. net wt. reg. \$15 **\$12**



Espresso Martini 860-420



Irish Cream 549-228



Spiked Macchiato 860-416

Espresso Martini 860-420



Volumizing and lengthening heart-shaped fibers + intense black pigments.

fmg LOVE at 1st Lash Mascara

Love Complex™ with lycopene, olive oil and vitamin E. Transfer-resistant. Clump-, flake- and smudge-proof. .3 fl. oz. **Blackest Black 698-670** reg. \$15 **\$12.99**



Long and healthy.

fmg Glimmer SuperExtend Nourishing Mascara

Enriched with vitamin E, and argan and coconut oils. Won't clump, smudge or flake off. Each, .237 fl. oz. **Brown Black 698-852** **Black 698-848** reg. \$11 **\$8.99**



Super volume.

fmg Glimmer SuperShock Volumizing Mascara

Instant high-gloss lushness. .338 fl. oz. **Black 698-829** reg. \$11 **\$8.99**



Waterproof volume.

fmg Glimmer Wash-Off Waterproof Mascara

Washes off easily with soap and water. .21 oz. net wt. **Black 723-107** reg. \$10 **\$7.99**



EYES + BROWS



Color-coordinated shades work together for expressive eye looks that last all day.

fmg Glimmer Eyeshadow Quad

Creamy soft powder formula hugs lids with rich color for all-day wear without the fallout. Free from parabens and fragrance. Available in Multi or All Matte. .21 oz. total net wt. reg. \$15 **\$11.99**



MATTE Tigress 741-333

Universal clear shade for a professional sculpted look.

fmg Colors of LOVE Hi-Brow Sculpting Brow Gel
Flexible, flake-proof formula. With moisturizing aloe and nourishing hyaluronic acid. Soft matte finish. Tapered micro-brush ensures precise application. Wear alone or over your favorite brow products. Free from parabens, phthalates and fragrance. .11 fl. oz. **Universal Love (Clear) 536-695** reg. \$17 **\$12.99**



Amp up brows with a sweep of tinted gel for a full, fluffy look.

fmg Colors of LOVE Hi-Brow Tinted Brow Gel
Water-resistant, smudge- and flake-proof formula fills, grooms and shapes for 24-hour wear. With heart-shaped fibers, clay and vitamin E. Soft matte finish. Tapered micro-brush. .11 fl. oz. reg. \$17 **\$12.99**



Medium Brown 792-537



Vivid stay-all-day shimmery color.

**fmg Glimmershadow
Liquid Eyeshadow***

Long-wearing, no-smudge, no-crease, buildable formula with no messy fallout. Ultrafine pearl finish. Water-resistant. Paraben-, phthalate- and sulfate-free. .07 fl. oz. reg. \$12
\$8.99

		
MATTE SATEEN Citrine 451-120	MATTE SATEEN Pink Sapphire 448-591	MATTE SATEEN Tiger's Eye 500-585
		
MATTE SATEEN Jasper 500-566	SHIMMER Pink Topaz 479-150	SHIMMER Crystal Lilac 479-040
		
SHIMMER Rose Gold 469-095	SHIMMER Bronze Age 469-100	GLITTER Peach Sapphire 469-057
		
GLITTER Fool's Gold 469-076	GLITTER Ultramarine 469-042	

MATTE SATEEN
Citrine
451-120



GLIMMER LINERS

Soft sheen finish.

fmg Glimmer Cream Eyeliner*
Long-wearing. Retractable.
.01 oz. net wt. reg. \$9
\$4.99



Starry
Night
334-347

		
Blackest Black 334-366	Cosmic Brown 334-351	Majestic Plum 334-313
		
Starry Night 334-347	Emerald Green 334-332	Saturn Grey 334-328

Unique cap with
built-in sharpener!

**fmg Glimmer
Always On Point Eyeliner***
Smudge- and waterproof.
Creamy, smooth formula
stays color-true all day.
Free from parabens, sulfates
and talc. .01 oz. net wt.
reg. \$9
\$6.79



Black
016-389

	
Black 016-389	Black Brown 016-446

Subtle sparkle.

fmg Glimmer Diamond Eyeliner*
Long-wearing. Retractable.
.01 oz. net wt. reg. \$9
\$4.99



Teal
Sparkle
331-606

		
Olive 331-940	Sterling 331-960	Black Ice 331-610
		
Brown Sugar 331-568	Sugar Plum 331-625	Purple Rain 332-071
		
Twilight Sparkle 331-553	Teal Sparkle 331-606	Smoky Diamond 331-280

For natural-looking brows.

fmg Glimmer Brow Definer*
Infused with nourishing
castor oil, aiding in hair
growth, and coconut oil.
Smudge-, transfer-, sweat-
and waterproof. Retractable.
.01 oz. net wt. reg. \$9
\$4.99



Brunette
331-242








		
Light Blonde 331-109	Blonde 331-113	Tawny 331-128
		
Light Brown 331-151	Dark Brown 331-147	Brunette 331-242

Smudge- and sweatproof.

fmg Glimmer Waterproof Eyeliner*
Long-wearing. Retractable.
.01 oz. net wt. reg. \$9
\$4.99



Midnight
Blue
332-158

		
Smoky Grey 332-162	Blackest Night 332-143	Midnight Blue 332-158
		
Blue Skies 334-237	Raisin 332-200	Brown Chocolate 332-124
		
Seafoam Green 334-241		

Easy-glide, quick-dry
precision felt-tip liner
delivers rich color
with long-lasting wear.

fmg Glimmer Liquid Eyeliner
Matte finish. Removes
with ease using soap and
water or makeup remover.
Transfer-, sweat- and
waterproof. .037 fl. oz.
Blackest Black 354-380
reg. \$12
\$9.99





FLEX YOUR METAL

NEW

Mani of the moment: matte metallics!

fmg Glimmer Matte-Ilic Crystals Nail Lacquer
Innovative nail lacquer combines vibrant color with a matte crystal finish. Long-wearing formula dries quickly and provides a protective shield against chipping. Free from parabens, toluene, formaldehyde and camphor. .4 fl. oz. reg. \$10 \$7.99

Rose Citrine 843-057
Stolen Sapphire 842-998
Smoky Quartz 843-042

Max shine and vivid color for a salon-worthy manicure that lasts!

fmg Glimmer Nail Lacquer

Gel-like cushion texture. Nail-strengthening formula dries smooth and even for lasting wear that does not chip. No UV light needed. Free from parabens, talc, gluten, phthalates and fragrances. .4 fl. oz.

reg. \$10
\$7.99

SATIN Full Moon Flush 740-671	SATIN Cool Comet 740-667	SATIN Lunar Tan 740-652	SATIN High Magnitude Mauve 740-781	METALLIC Meteorite Rose 740-800	METALLIC Golden Galaxy 740-796



Get mistake-free manis at home.

fmg Glimmer Nail Lacquer Eraser Pen

Glide over nail edges after applying nail lacquer for a clean and perfected manicure. .135 fl. oz. 704-443 reg. \$10 \$7.49



Creamy formula for cheeks and lips.

fmg Glimmer Be Blushed Cheek Color

Glides on smoothly without streaking for a natural flush of color. Buildable coverage. Soft dewy finish. With skin-nourishing vitamin E for antioxidant benefits. Free from parabens, phthalates and fragrance. .14 oz. net wt.

reg. \$14
\$10.99



Subtle yet eye-catching radiance.

fmg Glimmer Powder Illuminator

Finely milled powder creates a multi-dimensional luminous glow instantly. Lightweight buildable formula with vitamin E builds and blends effortlessly, providing a naturally radiant finish. Free from parabens, phthalates and fragrance. .35 oz. net wt.

reg. \$14
\$9.99 each



Instant pop of color.

fmg Glimmer Powder Blush

Richly pigmented, silky pressed powder hugs cheeks. Weightless formula with ultrafine pearls for added dimension and vivid payoff blends effortlessly. Buildable coverage and soft matte finish. With skin-nourishing vitamin E for antioxidant benefits. Free from parabens, phthalates and fragrance. .28 oz. net wt.

reg. \$14
\$9.99



CATHYCAT

Create a sultry cat-eye look with this rich, long-wearing liquid liner.

fmg CathyCat Nine Lives Precision Liquid Eyeliner
Slim-tip brush delivers a precise line of waterproof and sweat-proof color that will not skip, tug or smudge. .068 fl. oz.
Blackest Black
800-829
reg. \$18
\$14.99



Perfectly designed false lashes add length, dimension and volume.

fmg CathyCat LushLashes
Vegan. Includes one pair of false lashes and glue. Available in two flirty styles! reg. \$11
\$8.99 each



Soft & Sultry
959-304



Fierce & Flared
960-050

No-budge, water-resistant lashes, from dawn to dusk.

fmg CathyCat Play All Day Mascara
Long-wearing mascara coats each lash with rich pigments that will not budge or smudge for nine lives of perfect wear. Nourishing formula with a blend of conditioning coconut and argan oils and lash-supporting panthenol. Removes easily with soap and water. .28 oz. net wt.
Blackest Black
904-712
reg. \$17
\$13.99



Lengthen, curl and captivate!

fmg CathyCat Curl & Flare Mascara
Long-lasting mascara applies evenly. Uniquely curved brush provides major lift, extraordinary curl and impressive length. Nourishing formula with a blend of conditioning coconut and argan oils and lash-supporting panthenol. .28 oz. net wt.
Blackest Black
901-269
reg. \$17
\$13.99



Take your brow game to new heights!

fmg CathyCat High Arch Precision Brow Pencil
Long-wearing cream-to-powder pencil glides on smoothly, creating a well-defined look. Waterproof formula stays in place without budging or smudging for perfectly gorgeous brows. .01 oz. net wt. reg. \$15
\$11.99



Brown
837-442



Matte shadow stick colors and defines for all-day play.

fmg CathyCat Shadow Gaze Matte Color Stick
Comfortable, long-wearing formula provides the perfect amount of playtime for blending and building color intensity. Once the shade sets, it will not budge or smudge. .0476 oz. net wt. reg. \$17
\$13.99



Rosewood 958-547



GLOKOLOR Clean. Vegan. Hydration.

Rich serum pampers lips.

fmg GLOKOLOR Lip Serum Pencil
Infused with a burst of peppermint oil, a nourishing lip booster complex and argan oil. Lips feel smooth and refreshed. Free from parabens and fragrance. .06 oz. net wt.
787-508 reg. \$20
\$16



Ultrafine water-based formula awakens skin while locking makeup in place.

fmg GLOKOLOR Hybrid Face Mist
Spritz it anytime, anywhere for an instant boost of moisture to refresh skin. With aloe vera, agave and algae extracts to help soothe and nourish the complexion. Dermatologically tested. Free from parabens and sulfates. 2.7 fl. oz.
787-599 reg. \$24
\$20



Prep step with instant boost of moisture!

fmg GLOKOLOR Hybrid Face Primer
Light, breathable formula softens the appearance of imperfections while creating a flawless canvas for makeup. With aloe vera, agave and algae extracts to help soothe and nourish the complexion. Dermatologically tested. Free from parabens and sulfates. 1 fl. oz.
787-637 reg. \$24
\$20





Featured shade:
24 Hour Foundation in Java.

Good Housekeeping Magazine
2021 Beauty Award Winner.

fmg Cashmere 24 Hour Foundation*
24 hours of comfortable, breathable wear.
Full, flexible coverage. Soft-focus matte finish.
Visibly blurs pores and fine lines for a smoother
complexion. With antioxidant botanical extracts.
Water-resistant. Vegan. 1 fl. oz. **reg. \$32**
\$24.50

CASHMERE FACE

	Nougat (W) 126-107		
	Marshmallow (N) 131-849		Macadamia (W) 136-525
			Ganache (WO) 136-889
	Cappuccino (N) 136-893		Chai (WO) 136-559
			Toasty (N) 139-027
	Praline (N) 141-406		Tiramisu (W) 137-278
			Soufflé (N) 139-730
	Muffin (W) 142-307		Gingerbread (C) 142-311
			Pudding (N) 146-097
	Amaretto (N) 146-188		Latte (W) 147-480
			Brownie (WO) 147-461
	Hazelnut (W) 147-495		Cognac (W) 147-681
			Pecan (N) 149-699
	Java (W) 149-722		Clove (N) 149-756
			Truffle (C) 150-263

*Available in Cool (C),
Neutral (N), Warm (W)
and Warm Olive (WO) undertones.

**Available in Cool (C), Neutral (N) and
Warm (W) undertones.

Enjoy special prices and
offers with an Avon account
or Representative.

CASHMERE FACE luxury in the shade of you

2-in-1 powder can
be worn wet or dry.

fmg Cashmere Compact Powder Foundation**

Use as foundation or setting
powder. Buildable medium-
to-full coverage. Soft-focus
matte finish. Amino-acid-
coated pigments control
shine. With collagen, lavender
oil, and artichoke and
chamomile extracts. Includes
mirror compact and sponge.
.40 oz. net wt. **reg. \$36**

\$30

	N110 107-830		W110 111-294		C110 111-313		W140 111-514
	W160 111-533		N130 111-548		N140 111-605		W170 111-610
	N150 111-658		W180 112-229		N160 112-248		C120 112-286



N150
111-658

Velvety soft-matte color.

fmg Cashmere Cushion Foundation**

Enriched with soothing
calendula extract,
moisturizing squalane and
skin-brightening niacinamide.
Helps to cover the look of
imperfections. Light-to-
medium coverage. Includes
sponge puff applicator. Free
from parabens, phthalates
and fragrance. .42 oz. net wt.
reg. \$27

\$24.50

	W215 485-424		C215 485-481		W225 485-439		N225 485-496
	C225 485-701		N235 485-500		W235 485-716		W245 486-784
	N245 487-264		W255 488-639		N255 488-734		W265 488-749
	N265 488-878		W275 488-863		W285 488-882		N275 489-051



W275
488-863

24 hours of comfortable,
breathable wear.

fmg Cashmere 24 Hour Concealer*

Full coverage. Soft-focus
matte finish. Visibly
corrects dark circles
and imperfections. With
antioxidant botanical
extracts. Water-resistant.
.20 fl. oz.

reg. \$22

\$16

	Tart (WO) 115-012		Butterscotch (W) 115-156		Waffle (W) 115-869
	Biscuit (WO) 116-650		Toffee (W) 123-662		Cupcake (N) 123-715

Toffee (W)
123-662



Packaging may vary.



FREE

fmg Oil Rewind Roller Ball, with any \$30 Cashmere face or
eye purchase, pages 96-99. \$16 value.
Sold separately on page 102. Limited quantities.

CASHMERE EYE

Expertly curated 9-shade palettes to create an array of looks.

fmg Cashmere Eyeshadow Palette
Long-wearing creamy powder shadows in satin, matte and sparkling finishes. Crease- and smudge-proof. Talc-, paraben- and fragrance-free. .63 oz. total net wt. reg. \$40
\$33 each



Enchanted Eyes
401-440



Essential Eyes
404-745



Essential Eyes
404-745

CARESS OF CASHMERE

CASHMERE EYE

Intense, decadent black shades with dazzling jewel undertones for dramatic results.

fmg Cashmere 24 HR Cream Eyeliner
Comfortable kohl formula with 24-hour wear. Waterproof, matte finish. Smudge applicator to blend. Vegan. Paraben-, phthalate- and fragrance-free. .04 oz. net wt. reg. \$18
\$15



Midnight
566-830

Nightfall
565-451

Fills in brows as it boosts color.

fmg Cashmere 24 Hour Brow Pomade
Smudge-proof, sweat-proof formula. Matte finish. Comes with dual-ended applicator with angled-tip brush and spoolie, 4 1/2" L. .14 oz. net wt. reg. \$24
\$20

Blonde
423-710

Light Brown
423-705

Brown
423-356

Ash Brown
423-208

Dark Brown
423-227

Black Brown
423-212



Light Brown
423-705

Rich black pigmented formula with extreme staying power.

fmg Cashmere Ultimate Volume Mascara
Leaves lashes feeling soft. Won't budge, smudge or transfer. Triple sphere brush hugs lashes. Removes easily. Vegan. .27 fl. oz. **Rich Black 153-736** reg. \$22
\$18



Smoother, brighter, flawless-looking eyes.

fmg Cashmere Under Eye Primer
Helps concealer wear all day. Infused with caffeine, green tea extract and vegan collagen to help diminish the appearance of dark circles, puffiness and fine lines. Free from parabens, phthalates and fragrance. .317 oz. net wt. **010-429** reg. \$22
\$18



MATCH MAKEUP

Primes, protects and perfects.

fmg Match Prime Face Perfector

Flaw-blurring mattifying primer with SPF 20. Shine-defying microspheres visibly minimize pores and fine lines. Sheer breathable coverage suitable for all skin tones. Soft-focus matte finish. Free from oil and parabens. 1 fl. oz.

932-377
reg. \$14
\$11.49



Instantly hydrates, blurs and evens tone!

fmg Match Filter Serum Tint Foundation

Infused with hyaluronic acid, vitamin E and a berry complex. Demi-matte powder finish. Buildable sheer-to-medium coverage. Suitable for all skin types. Includes sponge applicator. Free from talc, parabens and fragrance. .31 oz. net wt.

reg. \$18
\$14.99

Fair 932-491	Fair Light 932-620	Light 932-640
Light Medium 932-654	Soft Medium 932-783	Medium 932-836
Medium Deep 933-153	Tan Deep 933-168	Deep 933-172



Camouflage imperfections.

fmg Match Wand Correcting Stick

Minimizes skin concerns without creasing or caking! With shea butter and vitamin E. Free from parabens, phthalates and sulfates. .21 oz. net wt. reg. \$16

\$12.99



Pistachio: neutralizes redness 726-770



Gelato: brightens dullness 726-785



Sherbet: neutralizes dark circles and marks 726-790

Pistachio 726-770



Conceal + Contour + Highlight

fmg Match Wand Foundation Stick

Instantly blurs and perfects skin. Helps to control oil and shine. Full and flexible all-over coverage in a demi-matte finish. Water-resistant. With shea butter and antioxidant vitamin E. Perfect for easy touch-ups. Free from parabens, sulfates and phthalates. Vegan. .21 oz. net wt.

reg. \$16
\$12.99

Truffle (C)
596-297



Marshmallow (N) 594-882	Vanilla (W) 594-935	Macadamia (W) 595-028	Chai (W) 595-157
Toasty (N) 595-229	Cappuccino (W) 595-233	Tiramisu (W) 595-252	Amaretto (N) 595-267
Latte (W) 595-400	Hazelnut (W) 595-860	Pecan (N) 595-946	Truffle (C) 596-297

Available in Warm (W), Neutral (N) and Cool (C) undertones.

MATCH MAKEUP



Mineral-infused loose powder and brush in one!

fmg Match Set Finishing Powder To-Go

Creates an invisible veil that controls shine and sets makeup. Lightweight formula diffuses light and visibly blurs pores and fine lines. Silky-soft matte finish never looks cakey. Free from talc, parabens and fragrance. .09 oz. net wt. 227-063

reg. \$19
\$14.99



Creates an invisible veil that controls shine and sets makeup.

fmg Match Set Finishing Powder

Lightweight mineral-infused loose powder formula diffuses light and visibly blurs pores and fine lines. Silky-soft matte finish never looks cakey. Includes puff applicator. Free from talc, parabens and fragrance. .22 oz. net wt.

932-472
reg. \$17
\$13.99



Helps control oil and create a shine-free canvas.

fmg Match Blur Oil Control Primer Balm

Sheer mattifying formula. Special blurring powder microspheres help reduce the look of fine lines and pores. With nutmeg extract for antioxidant benefits. Includes sponge applicator. Free from talc and parabens. .59 oz. net wt.

932-381
reg. \$19
\$15.99



Blend of ultrafine rose quartz, ruby and tourmaline.

fmg Match Dust Finishing Powder

Weightless loose mineral powder diffuses light, visibly blurs pores and controls shine. Soft matte finish. Includes no-spill twist-and-lock sifter. Free from talc, oil and parabens. .21 oz. net wt. reg. \$17

\$13.99

Translucent Fair-Light
594-720

Translucent Medium-Deep
594-768



Helps camouflage as it corrects and brightens.

fmg Match Corrector Brightening Perfector

Creamy veil of color helps blur flaws and reduce the appearance of fine lines, dark circles and blemishes. Buildable sheer-to-medium coverage with a demi-matte finish. Free from talc, parabens, sulfates, alcohol and fragrance. .11 oz. net wt.

reg. \$13
\$9.99

Fair-Light 932-396
Medium 932-415
Tan-Deep 932-434



MAKEUP MUST-HAVES

fmg Vanity Organizer

Makeup-theme print. Four compartments with two removable inside dividers, three outer pockets and lattice elastic straps. Folds for easy storage. 9 1/2" L x 6" W x 5" H. Polyester. Imported.

022-816 reg. \$30
\$22.99



NEW

fmg Set & Fix Spray

Lightweight formula controls oil and creates a protective shield, keeping makeup smudge-proof and looking fresh all day. Conditions and smooths skin. Ultrafine mist dries quickly to an invisible finish. Non-greasy, non-sticky. Free from parabens, sulfates, phthalates and silicones. 1.7 fl. oz. 416-707

reg. \$15
\$9.99



fmg Makeup Remover Wipes

Formulated with antioxidant vitamin E and an extract blend of aloe, chamomile, cucumber, marshmallow root and soothing oat. Leaves skin feeling soft and clean. Fragrance-free. Resealable pack of 24 wipes.

333-867 reg. \$9
\$7.49 each



fmg Oil Rewind Roller Ball

Reusable 360° rotating volcanic-stone roller instantly absorbs oil and grease. Control shine throughout the day without disturbing makeup. Ideal for touching up makeup on the go. Clean after each use. 1" W x 3" H. Plastic handle, protective cap. Imported. 508-294

reg. \$16
\$12.99



fmg Moisturizing Eye Makeup Remover Lotion

Cleans, refreshes and moisturizes around the delicate eye area as it whisks away makeup. 2.5 fl. oz.

543-272 reg. \$8
\$5.99



fmg Express Makeup Brush Wash

Alcohol-free formula. Contains soothing aloe vera and green tea extract. Bristles are left conditioned with no leftover residue. 1 fl. oz. 141-368

reg. \$12
\$9.99



fmg Waterproof Lip & Eye Makeup Remover

Dual-layer oil and water remover leaves skin fresh and clean. Mineral-, tar-, talc- and paraben-free. 3.7 fl. oz. 352-243

reg. \$12
\$7.99



DUAL-ENDED BRUSHES & MORE

fmg Kabuki Brush

With soft, angled bristles to effortlessly blend pressed or loose powder formulas. Retractable. Cap keeps the brush head safely covered when not in use. 3 1/4" L x 1" diam.

732-370 reg. \$16
\$13.99



fmg Flawless Complexion Sponge

With a full rounded bottom for all-over makeup application and blending, and flat side for contouring, highlighting and concealing. 2 1/2" L x 1 1/2" W. 100% PU, latex-free.

140-160 reg. \$9
\$6.99



fmg Unready Makeup Remover Cloth

Dual-sided cloth makes makeup removal quick and easy. Gently exfoliates skin. 100% polyester. 9 7/8" sq. Machine wash and dry. Imported.

230-176 reg. \$12
\$9.99



fmg Eyeshadow Blending Brush

With a soft, domed crease brush on one end and a flattened, all-over eyeshadow brush on the other to apply and buff eyeshadow. 6" L.

933-320 reg. \$14
\$10.99



fmg Complexion Blending Brush

With a dense, rounded buffing foundation brush on one end and a precise, rounded concealer brush on the other to create a flawless canvas. 6 1/2" L.

933-210 reg. \$21
\$16.99



fmg Blush & Contour Brush

With a tapered, oval blush brush on one end and a fluffy, angled contour brush on the other to add color and dimension. 7 1/4" L.

933-259 reg. \$20
\$15.99



fmg Precision Eye Brush

With an angled eyeliner brush on one end and a pointed pencil brush on the other to highlight or add depth to eyes. 5 1/4" L.

933-187 reg. \$14
\$10.99



Far Away

A wanderlust for the exotic.

Far Away
amber floral

Top: Bergamot,
Freesia, Peach

Mid: Jasmine Absolute,
Ylang-Ylang,
Orange Blossom

Dry: Vanilla Absolute,
Musk, Enticing Amber

FRAGRANCE

Original
Eau de Parfum
1.7 fl. oz.
685-712
reg. \$25
\$18.99

Intense
Eau de Parfum
1.7 fl. oz.
931-332
reg. \$31
\$25.99

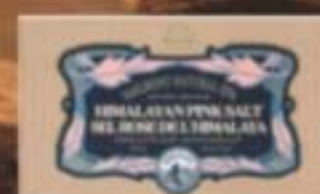
Shimmering
Body Mist
3.25 fl. oz.
618-945
reg. \$20
\$15.99

Hair & Body Mist
3.25 fl. oz.
572-536
reg. \$16
\$11.99

Intense Luxury
Body Crème
5 fl. oz.
806-300
reg. \$23
\$18.99



Enjoy special prices and offers with
an Avon account or Representative.



FREE Veilment Himalaya Pink Salt Exfoliating Soap
with any \$25 fragrance purchase, pages 105 thru 125. \$8 value.
Sold separately on page 143. Limited quantities.



**Far Away Bali
Eau de Parfum**
fruity floral
Sparkling grapefruit,
salted tuberose and
golden amber.
1.7 fl. oz.
451-389
reg. \$25
\$18.99



**Far Away Infinity
Eau de Parfum**
fruity floral
Radiant bergamot,
jasmine sambac and
sensual sandalwood.
1.7 fl. oz.
318-481
reg. \$25
\$18.99



**Far Away Gold
Eau de Parfum**
amber floral
Ylang-ylang,
Indian jasmine and
Madagascar vanilla.
1.7 fl. oz.
685-727
reg. \$25
\$18.99



SET INCLUDES:

Far Away Eau de Parfum
amber floral
Freesia, sheer jasmine and enticing
amber. 1.7 fl. oz.

**Far Away Roll-On Anti-Perspirant
Deodorant**
2.6 fl. oz.

Candid Cologne
amber floral
Bergamot, tuberose and patchouli.
1.7 fl. oz.

3-PIECE SET
\$22.99
OVER \$46 VALUE
525-467



SET INCLUDES:

Far Away Bali Eau de Parfum
fruity floral
Sparkling grapefruit, salted tuberose and
golden amber. 1.7 fl. oz.

**Far Away Roll-On Anti-Perspirant
Deodorant**
2.6 fl. oz.

Candid Cologne
1.7 fl. oz.

3-PIECE SET
\$22.99
OVER \$46 VALUE
527-201



SET INCLUDES:

Far Away Gold Eau de Parfum
amber floral
Ylang-ylang, Indian jasmine and
Madagascar vanilla. 1.7 fl. oz.

**Far Away Roll-On Anti-Perspirant
Deodorant**
2.6 fl. oz.

Candid Cologne
1.7 fl. oz.

3-PIECE SET
\$22.99
OVER \$46 VALUE
526-076

lush layers

your favorite scent, anytime, anywhere.



NEW

LIMITED EDITION

Intense Parfum Stick

Take your signature scent to go! Purse- and travel-friendly, no-mess solid formula delivers the same fragrance impression as an eau de parfum. Easy glide-on application. Leaves no residue, melts quickly into skin. Each, .11 oz. net wt.

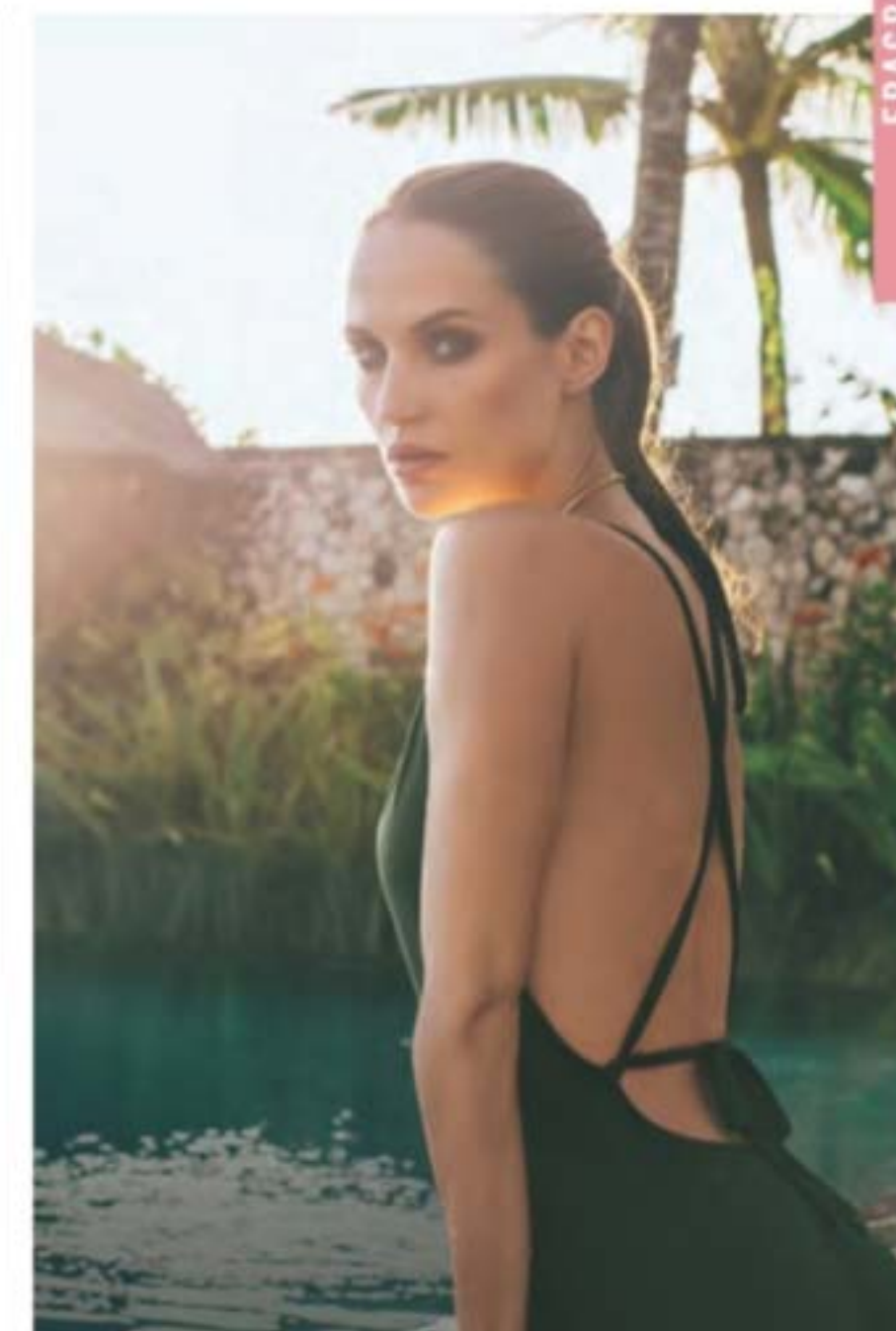
Haiku Intense 184-165
Rare Pearls Intense 184-184
Far Away Intense 184-170
 reg. \$23
\$19.99 each

HAIKU serene. divine. elegant.

Haiku
fresh green floral
 Japanese yuzu, delicate
 muguet and blonde woods.

Original Eau de Parfum
 1.7 fl. oz. 601-030
 reg. \$25
\$18.99

Hair & Body Mist
 3.25 fl. oz. 572-574
 reg. \$16
\$11.99



FRAGRANCE

Intense Eau de Parfum
 1.7 fl. oz. 097-110
 reg. \$31
\$25.99

Intense Travel Spray
 .3 fl. oz. 880-353
 reg. \$16
\$12.99

**Intense
 Luxury Body Crème**
 5 fl. oz. 806-239
 reg. \$23
\$18.99



HAIKU a serene garden of pure bliss



Haiku Kyoto Flower
fresh green floral
Violet leaf, white peony
and soft cotton musk.

Original
Eau de Parfum
1.7 fl. oz.
144-352
reg. \$25
\$18.99

Intense
Eau de Parfum
1.7 fl. oz.
578-811
reg. \$31
\$25.99



Haiku Sacred Intense
Eau de Parfum
fruity floral
Discover a divine blend
of uplifting tangerine,
rose de mai and
earthy driftwood.
1.7 fl. oz.
579-750
reg. \$31
\$25.99



Haiku Reflection
Eau de Parfum
fresh green floral
Radiant water accord,
acacia blossom and
amber wood.
1.7 fl. oz.
617-657
reg. \$25
\$18.99



RARE a treasure beyond compare

Rare Pearls
soft floral
Shimmering magnolia,
white pepper and
creamy rosewood.

Eau de Parfum
1.7 fl. oz.
761-615
reg. \$25
\$18.99

Hair & Body Mist
3.25 fl. oz.
572-851
reg. \$16
\$11.99



Rare Gold Intense
Eau de Parfum
amber floral
Opulent notes of
mandarin zest,
ylang-ylang and
golden amber.
1.7 fl. oz.
784-126
reg. \$31
\$25.99



Rare Amethyst
Eau de Parfum
fruity floral
Passionate plum,
blooming violet and
rich sandalwood.
1.7 fl. oz.
933-062
reg. \$25
\$18.99





Imari Amor
woody floral

Top: Mandarin, Lychee,
Black Currant, Green Notes

Mid: Rose, Jasmine, Neroli,
Ylang-Ylang, **Precious Orris**

Dry: Sandalwood, Amber,
Patchouli, **Warm Musk**

Eau de Parfum
1.7 fl. oz.
762-573
reg. \$25
\$17.99



Imari
Eau de Toilette
amber floral
Italian bergamot,
tempting jasmine
and amber.
1.7 fl. oz.
871-496
reg. \$25
\$18.99



Imari Seduction
Eau de Toilette
amber floral
Wild berries,
hypnotic purple
orchid and patchouli.
1.7 fl. oz.
452-897
reg. \$25
\$18.99



Rêve en Cube
Letter from the Stars
Eau de Parfum
fruity floral
The stars beam brightly
against the evening sky,
guiding you to a
dreamy world that
shines with fragrant
sparkling notes.
3.4 fl. oz. **809-238**
reg. \$70
\$59

Top: **Radiant Grapefruit**,
Lemon

Mid: **Sweet Gardenia**,
Jasmine

Dry: Fuzzy Peach,
Balsamic

RÊVE EN CUBE

Explore an enchanting space where
fantasy blooms, romance is uninhibited
and true beauty comes to life.



Rêve en Cube
Misty Green Eau de Parfum
soft floral
Get lost in a field of dreams,
where lush greenery is
surrounded by uplifting notes,
creating a serene escape.
3.4 fl. oz.
850-863
reg. \$70
\$59

Top: **Bergamot**,
Grapefruit,
Mandarin,
Lemon

Mid: Neroli,
Jasmine,
Lily of the Valley

Dry: **White Musk**,
Vetiver,
Amber Wood



IT'S YOUR
LIFE
OWN IT

NEW

Live Out Loud #4U
Eau de Parfum
fruity floral
Express yourself
with a fresh scent
brimming with
exuberance.
1.7 fl. oz. **735-968**
reg. \$40
\$26.49

*Top: Juicy
Mandarin,
Pineapple,
Bergamot*

*Mid: Orange
Flower, Peach
Blossom,
Black Currant*

*Dry: Sweet
Vanilla, Musk,
Patchouli*



Live Out Loud
Eau de Parfum
fruity floral
A free-spirited
expression of sweet
wild strawberry,
sparkling mimosa
and comforting
fluffy vanilla.
1.7 fl. oz.
142-000
reg. \$40
\$26.49



WOMEN'S FRAGRANCES

Leaves skin feeling soft,
silky and beautifully scented,
with no greasy residue!

NEW

Dry Oil Spray
Fast-absorbing lightweight
nourishing oil replenishes
moisture instantly. Use on
damp skin for the
perfect post-shower glow.
Each, 3.25 fl. oz.

Today soft floral
Magnolia blossoms, hibiscus
petals and silk musk. **463-886**

Avon Prima amber floral
Delicate plum, pink rose and
white patchouli. **463-910**
reg. \$22
\$17.99 each

Today
Eau de Parfum
soft floral
Magnolia blossoms,
hibiscus petals
and silk musk.
1.7 fl. oz.
325-920
reg. \$30
\$26.49

L I V E

Y O U R

D R E A M

**Avon Classics
Dreamlife**
soft floral
A magical blend perfect
for every fantasy.

Top: **Mimosa Flower,**
Hyacinth, Apricot

Mid: **Aspirational Rose,**
Ylang-Ylang, Vanilla

Dry: Patchouli,
Sandalwood,
Glowing Amber

Cologne
1.7 fl. oz.
236-227
reg. \$18
\$13.49



AVON CLASSICS

ALWAYS
BEAUTIFUL

Timeless Cologne
soft floral
Cardamom, jasmine
and patchouli.
1.7 fl. oz.
037-930
reg. \$18
\$13.49



Topaze Cologne
soft floral
Jasmine, rose
and sheer musk.
1.7 fl. oz.
735-217
reg. \$18
\$13.49



Night Magic Cologne
woody floral
Neroli, jasmine
and musk.
1.7 fl. oz.
168-682
reg. \$18
\$13.49



Sweet Honesty Cologne
soft floral
Lily of the valley,
rose and cedarwood.
1.7 fl. oz.
037-595
reg. \$18
\$13.49



Odyssey Cologne
soft floral
Tuberose,
ylang-ylang and
warm oakmoss.
1.7 fl. oz.
168-697
reg. \$18
\$13.49



Free O₂
Eau de Toilette
fresh green floral
White peach tea,
airy honeysuckle
and musk.
1.7 fl. oz.
265-658
reg. \$18
\$13.49



Candid Cologne
amber floral
Bergamot,
tuberose and
patchouli.
1.7 fl. oz.
038-295
reg. \$18
\$13.49



Enjoy special prices and offers with an Avon account or Representative.

LYRD Artisan Cannabis Oud Eau de Parfum
fresh citrus
 Sweet pomelo, rich agarwood and earthy cannabis leaves. Contains .01% of CBD. This eau de parfum does not contain THC. 1.7 fl. oz. **254-544** reg. \$60 **\$49**



LYRD Oud Rose
woody floral
 Spicy saffron, romantic rose and velvety patchouli.

Eau de Parfum
 1.7 fl. oz.
954-412
 reg. \$38
\$32

Travel Spray
 .3 fl. oz.
448-496
 reg. \$21
\$17



LYRD Sparkling Neroli Eau de Parfum
fresh citrus
 Sparkling neroli, bergamot and warm musk. 1.7 fl. oz. **572-521** reg. \$36 **\$29**



LYRD Honeysuckle Blossom Eau de Parfum
soft floral
 Apple blossom, honeysuckle nectar and vanilla orchid. 1.7 fl. oz. **616-282** reg. \$24 **\$20**



LYRD Peony Rosé Eau de Parfum
soft floral
 Peony petals, pink currant and sheer musk. 1.7 fl. oz. **616-210** reg. \$24 **\$20**



Seasonal Delights

Get ready for the holidays!
 Apple picking, tree trimming
 and pumpkin pie, oh my!

LIMITED EDITION

◆ **LYRD Candle**
 Three-wick, 11 oz. candle gives 30 hours of burn time. 4 1/4" diam. x 3 1/8" H. Glass jar, paper dust cover, soy blend wax. Assembled in USA. reg. \$25 **\$19.99 each**



◆ **LYRD Enchanted Snowy Forest Candle**
 Take a magical walk in a winter wonderland as fresh snow falls and the air fills with notes of frost, pine and smoked woods. **082-069**

◆ **LYRD Let's Go Apple Picking! Candle**
 Family fun time at the apple orchard! Delight in the aroma of cozy cinnamon, juicy red apple and crisp cashmere woods. **082-001**

◆ **LYRD Sticky Cinnamon Goodness Candle**
 Yummy! Fluffy warm dough, drizzled with sinfully sweet cinnamon sugar and ooey-goey golden caramel. **082-020**

◆ **LYRD Save Room for Pumpkin Coconut Pie Candle**
 Did someone say pie? A warm fall hug with notes of shredded coconut, creamy pumpkin puree and sweet vanilla bean extract. **082-054**

Never leave burning candles unattended. Keep away from children and pets.

Mesmerize Ultimate
Eau de Toilette
woody fougère
Black pepper,
zesty pomelo and
sensuous patchouli.
3.4 fl. oz. 897-030
reg. \$36
\$27.99



Mesmerize Cologne
fresh aromatic
Bergamot, spicy
cardamom and amber.
3.4 fl. oz.
871-458
reg. \$25
\$18.99



Mesmerize Black
Eau de Toilette
woody fougère
Pepper, addictive nutmeg
and tonka bean.
3.4 fl. oz.
305-667
reg. \$25
\$18.99



Mesmerize Platinum
Ultimate Eau de Toilette
woody floral
Crisp pear, violet
and warm amber.
3.4 fl. oz.
179-633
reg. \$36
\$27.99



FRAGRANCE SETS save on all your faves

SET INCLUDES:

Mesmerize Cologne
fresh aromatic
Bergamot, spicy cardamom
and amber. 3.4 fl. oz.

Perceive Cologne
fresh aromatic
Sparkling citrus, sage and
cedarwood. 3.4 fl. oz.

2-PIECE SET
\$23.99
\$50 VALUE
981-142



SET INCLUDES:

Mesmerize Black Eau de Toilette
woody fougère
Pepper, addictive nutmeg and
tonka bean. 3.4 fl. oz.

Perceive Cologne
3.4 fl. oz.

2-PIECE SET
\$23.99
\$50 VALUE
981-161



SET INCLUDES:

Black Suede Eau de Toilette
fresh aromatic
Bergamot, soft leather and
oak moss. 3.4 fl. oz.

Perceive Cologne
3.4 fl. oz.

2-PIECE SET
\$20.99
\$47 VALUE
980-768



BLACK SUEDE ULTIMATE

EFFORTLESSLY COOL

Black Suede Ultimate
woody fougère
A dynamic blend of
lemon, rich lavender
and tonka bean.

Eau de Toilette
3.4 fl. oz.
792-412 reg. \$27
\$22.99

Body Moisturizer
6.7 fl. oz. 003-894 reg. \$19
\$14.99

Body Wash
6.7 fl. oz. 003-875 reg. \$19
\$14.99

Black Suede
Eau de Toilette
fresh aromatic
Fusion of bergamot,
soft leather and
oak moss.
3.4 fl. oz.
908-703
reg. \$22
\$14.99



Black Suede
Hair & Body Wash
5 fl. oz.
366-318
reg. \$8
\$3.99



Black Suede
Aftershave
Conditioner
3.4 fl. oz.
367-238
reg. \$8
\$3.99



Studio 1886 Gentleman
woody fougère
Dynamic blend of
geranium, black pepper
and cedarwood.

Eau de Toilette
1.7 fl. oz. 708-750
reg. \$50
\$39

Aftershave Lotion
6.7 fl. oz. 708-927
reg. \$16
\$12.99



Studio 1886 Legendary
Eau de Parfum
woody fougère
Vibrant lemon, crisp
lavender, patchouli
and salted amber.
1.7 fl. oz.
269-820
reg. \$50
\$39



Wild Country Cologne
fresh aromatic
A rugged blend of
lavender, coriander
seed and sandalwood.
3 fl. oz.
086-466
reg. \$22
\$14.99



Wild Country
Hair & Body Wash
5 fl. oz. 364-080
reg. \$8
\$3.99



Wild Country
Aftershave Splash
4 fl. oz.
366-432
reg. \$13
\$10.49



Perceive Cologne
fresh aromatic
Sparkling citrus, sage
and cedarwood.
3.4 fl. oz.
194-550
reg. \$25
\$18.99



Avon Exploration
Eau de Toilette
fresh aromatic
Fresh orange, silver
sage and vetiver.
2.5 fl. oz.
593-666
reg. \$25
\$18.99



Avon Classics Hand Cream

Moisturizing formula with jojoba seed oil and vitamin E. Leaves skin lightly scented. Each, 2.5 fl. oz.

Sweet Honesty 234-789

Night Magic 235-440

Timeless 234-740

reg. \$6

\$3.99 each

**Body Scrub & Wash**

Gentle formula cleanses as it removes rough, dry skin. Skin is refreshed, smooth and beautifully scented. Each, 6.7 fl. oz.

Haiku 143-208

Far Away 143-360

reg. \$12

\$9.99 each

**Body Lotion**

Luxurious moisturizer leaves skin soft and scented. Each, 6.7 fl. oz.

Far Away 082-881

Rare Pearls 082-915

Haiku 447-820

reg. \$10

\$6.99 each

*Creamy softness***Perfumed Skin Softener**

Moisturizing formula leaves skin soft and scented.

Each, 5 fl. oz.

Haiku 813-973

Candid 103-926

Far Away 812-981

Night Magic

Evening Musk

104-129

Odyssey 104-171

Sweet Honesty

104-463

Timeless 104-478

Imari 818-239

reg. \$8

\$3.99 each

**Deodorant Stick**

All-day freshness in your favorite classic Avon scent! Nourishing formula glides on smoothly without leaving any residue. Lasting odor protection. Each, 1 oz. net wt.

Wild Country 692-012

Black Suede 705-602

Rare Pearls 727-891

Haiku 727-906

reg. \$12

\$9.99 each

Gentology Herb & Aloe All-Over Wash

For face, hair and body. With aloe and natural herbal extracts.

10.1 fl. oz.

533-347

reg. \$16

\$13.65

**Bar Soap**

Moisturizes as it gently cleanses, leaving skin lightly fragranced.

Each, 3.17 oz. net wt.

Black Suede 495-565

Wild Country 495-570

reg. \$6

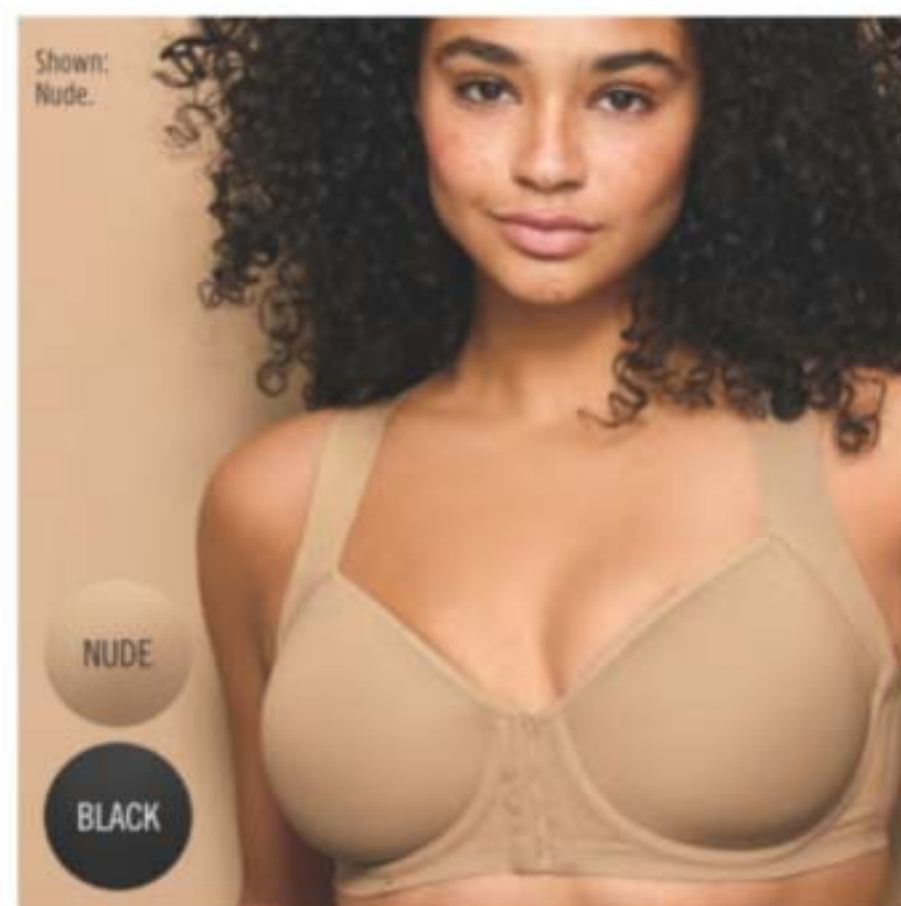
\$3.99 each



BALI® shape-smoothing styles to contour your curves



❖ **Bali® Satin Tracings® Minimizer Underwire Bra (3562)**
Back closure. Lightly lined. Polyester/nylon/spandex. Hand wash, line dry. Imported.
White: 34-48C,D,DD,DDD.
Nude, Rose or Black: 34-42C,D,DD,DDD.
reg. \$48
\$36.99



❖ **Bali® One Smooth U® Posture Boost with EverSmooth™ Back Underwire Bra (DF3450)**
Designed for all-over back support and smoothing. Features breathable cups to help keep you cool and no-slip straps. Front closure. Nylon/spandex. Hand wash, line dry. Imported. Sizes: 36-44C,D,DD (all colors).
reg. \$48
\$38.99



❖ **Bali® One Smooth U® Lace Minimizer Underwire Bra (DF3386)**
Minimizes up to 1½". Lightweight with sheer inserts. Full coverage. Power mesh provides extra cup support, opacity, back and side smoothing. Adjustable, convertible straps. Hand wash, line dry. Imported. Nylon/spandex. **White, Evening Blush or Black:** 34-42C,D,DD,DDD.
Nightfire Red: 36-40C,D,DD. reg. \$49
\$39.99



❖ **Bali® Comfort Revolution® EasyLite™ Breathable Racerback Bra (DF3499)**
Racerback pullover wirefree bra with mesh back. Cool Comfort® technology. Nylon/spandex. Hand wash, line dry. Imported. Sizes: S, M, L, XL, 2XL, 3XL (all colors).
reg. \$48
\$38.99

PLAYTEX® comfort and smoothing support



❖ **Playtex® 18 Hour® Ultimate Lift and Support Wirefree Bra (4745)**
Nylon/polyester/cotton/spandex. Hand wash, line dry. Imported. **White, Nude or Sandshell:** 36-42B; 36-44C,D; 38-46DD,DDD. **Gentle Peach, Crystal Grey, Blue Velvet or Black:** 36-40B; 36-44C,D; 38-44DD,DDD. reg. \$39
\$32.99



❖ **Playtex® Ultra Soft Comfortflex Fit® Convertible Wirefree Bra (US4830)**
Wire-free comfort. Lightly lined. Adjustable straps. Lightweight and flexible. Back closure. Nylon/spandex. Hand wash, line dry. Imported. Sizes: S-3X (all colors).
reg. \$46
\$36.99



❖ **Playtex® Secrets® Perfectly Smooth® Underwire Bra (US4747)**
Smooths side and back bulges. 4-Way TruSUPPORT® design. Back closure. Lightly lined. Nylon/spandex/polyester/cotton. Hand wash, line dry. Imported. Sizes: 36-42B; 36-44C,D,DD; 36-42DDD (all colors).
reg. \$46
\$37.99



❖ **Playtex® Smoothing Minimizer Wirefree Bra (US4697)**
Back closure. Lightly lined. Nylon/spandex. Hand wash, line dry. Imported. Sizes: 36-44C,D,DD,DDD (all colors).
reg. \$39
\$33.99

Playtex® is a registered trademark used under license.



Botanical Essence Bath Oil
With nourishing botanical extracts. Uplifting herbal scent. 16.2 fl. oz. 027-253 reg. \$31 **\$24.99**

Original Bath Oil
Hydrates during or after bath or shower. 16.9 fl. oz. 439-040 reg. \$24 **\$16.99**



Bonus-Size Original Shower Gel
Gently cleanses and hydrates. 33.8 fl. oz. 170-731 reg. \$18 **\$13.99**



Original Shower Gel
Gently cleanses and hydrates. 5 fl. oz. 933-005 reg. \$8 **\$5.19**



Original Body Lotion
48 hours of moisture. 11.8 fl. oz. 761-634 reg. \$11 **\$7.69**



Gelled Body Oil
Dries to a silky finish. 6.76 fl. oz. 939-500 reg. \$13 **\$8.69**

Bath Oil Spray
Locks in hydration. 5 fl. oz. 194-325 reg. \$14 **\$9.29**

Bonus-Size Bath Oil
Keeps skin hydrated after bath or shower. 25 fl. oz. 037-690 reg. \$30 **\$21.69**

Bonus-Size Original Body Lotion
33.8 fl. oz. 336-043 reg. \$20 **\$13.99**



Original Replenishing Hand Cream
24+ hours of moisturization. 3.4 fl. oz. 941-268 reg. \$5 **\$2.69**



Original Beauty Bar Soap
Skin-nourishing bar soap. Creamy lather. Suitable for daily use on face, body and hands. 3.17 oz. net wt. 543-110 reg. \$4.50 **\$3.49**





Bonus-Size Soft & Sensual Shower Gel
33.8 fl. oz.
171-848
reg. \$18
\$13.99

Soft & Sensual Body Lotion
11.8 fl. oz.
934-312
reg. \$11
\$7.69

Soft & Sensual Replenishing Hand Cream
3.4 fl. oz.
867-315
reg. \$5
\$2.69

Bonus-Size Soft & Sensual Body Lotion
33.8 fl. oz.
336-062
reg. \$20
\$13.99

Bonus-Size Soft & Sensual Bath Oil
25 fl. oz.
862-920
reg. \$30
\$21.69



Soft & Sensual Shower Gel
Gently cleanses and hydrates.
5 fl. oz.
435-600
reg. \$8
\$5.19



Soft & Sensual Bath Oil
Hydrates during or after a bath or shower.
16.9 fl. oz.
504-614
reg. \$24
\$16.99



Soft & Sensual Beauty Bar Soap
3.17 oz. net wt. 543-215
reg. \$4.50
\$3.49



Soft & Sensual Gelled Body Oil
Dries to a silky finish.
6.76 fl. oz.
908-244
reg. \$13
\$8.69



Soft & Sensual Antiperspirant Deodorant Roll-On
2.6 fl. oz.
714-861
reg. \$3.60
\$2.69



Radiant Moisture Replenishing Hand Cream
3.4 fl. oz.
941-272
reg. \$5
\$2.69



Bonus-Size Radiant Moisture Body Lotion
33.8 fl. oz.
337-346
reg. \$20
\$13.99



Radiant Moisture Shower Gel
Gently cleanses and hydrates.
5 fl. oz. 435-777
reg. \$8
\$5.19

Bonus-Size Radiant Moisture Shower Gel
33.8 fl. oz.
433-922
reg. \$18
\$13.99

Radiant Moisture Bonus-Size Bath Oil
With argan oil, Peony and musk scent.
25 fl. oz.
249-788
reg. \$30
\$21.69



Bonus-Size Supreme Nourishment Body Lotion
33.8 fl. oz.
337-475
reg. \$20
\$13.99



Comforting Shea Bath Oil
16.9 fl. oz.
015-071
reg. \$24
\$16.99



Supreme Nourishment Enriching Coconut Oil Wash
11.8 fl. oz.
933-703
reg. \$15
\$9.99



Supreme Nourishment Enriching Coconut Oil Lip Balm
Coconut flavor.
.14 oz. net wt.
958-370
reg. \$2
\$1.39



Fresh & Smooth Sensitive Skin
With meadowfoam oil and aloe. Fragrance-free.

Facial Hair Removal Cream
1 fl. oz. 605-088 reg. \$10

Body Hair Removal Cream
4.2 fl. oz. 923-448 reg. \$10
\$5.99 each





LET'S
CLEAR
SOME
THINGS
UP



developed for
all skin types, with
gently exfoliating
salicylic acid

Skin So Soft for Acne-Prone Skin

FOR FACE

A. Soothing Spot Gel
Skin looks radiant, even-
toned. With rosemary,
madecassoside and mint
extracts. Leave on, dries
clear. .5 fl. oz.
072-721 reg. \$18
\$13.99

B. Foaming Cleanser
With plant-based scrub,
rosemary, madecassoside
and mint extracts. 5 fl. oz.
041-647 reg. \$17
\$12.99

FOR BODY

C. Soothing Gel
Helps visibly improve
tone and texture. Cooling
sensation. With glycerin,
allantoin and panthenol.
Leave on, dries clear.
6.1 fl. oz. **040-636**
reg. \$20
\$15.99

**D. Exfoliating
Body Wash**
Nondrying, nonirritating.
With rosemary oil.
10.1 fl. oz. **041-556**
reg. \$20
\$15.99

E. Gentle Body Wash
Nondrying, nonirritating.
With rosemary oil.
10.1 fl. oz. **039-325**
reg. \$20
\$15.99

F. Body Pads
Pre-soaked exfoliating
cotton pads. Helps even
tone. With hyaluronic
acid and panthenol.
70 pads. **039-330**
reg. \$30
\$24.99

Suitable for daily use
and free of synthetic
fragrances.

❖ **A. Candle**
1 wick. Soy-wax blend. 3" diam. 3 1/2" H. Burn time, 40 hours. 7 oz. net wt. 504-686 reg. \$23 \$18.99

Place candle on trivet or holder before lighting to protect furniture. Never leave burning candles unattended. Keep away from children and pets.

B. Room Spray
Instantly refresh your home. 3.25 fl. oz. 361-851 reg. \$13 \$10.99

C. Air Diffuser
Six diffuser reeds. Fragrance oil, 2.37 fl. oz. 504-724 reg. \$30 \$24.99

D. Bath Salts
Pour a handful under warm running water. With sea salt, glycerin and sunflower seed oil. Use 1-3 times a week. 12.5 oz. net wt. 504-557 reg. \$23 \$18.99

E. Shower Steamers
Place one on shower shelf and activate with shower steam (avoid heavy stream of water). Each, 1 oz. net wt. 504-428 reg. \$26 \$20.99 six shower steamers

AVON SENSES GRATITUDE
LAVENDER & CEDARWOOD
Fill your space with the calming and soothing scents of lavender and cedarwood.



A. Body Mist
With aloe vera extract, refreshes and leaves skin feeling soothed. 8 fl. oz. 034-888 reg. \$18 \$14.99

B. Shower Gel
Moisturizing cleanser derived from coconut. 10 fl. oz. 035-190 reg. \$17 \$13.99

C. Body Lotion
Smooths and softens with moisture-rich shea butter and vitamin E. 8 fl. oz. 035-152 reg. \$17 \$13.99

D. Hand Soap
With moisturizing glycerin, leaves hands feeling clean and soft. 10.1 fl. oz. 852-081 reg. \$13.99 \$10.99

E. Hand Cream
With shea butter and antioxidants, leaves dry hands feeling buttery smooth. 2.5 fl. oz. 015-029 reg. \$6 \$4.99

F. Body Scrub
Remove dry, dead skin while shea butter and olive and avocado oils help moisturize. 9 oz. net wt. 530-314 reg. \$22 \$17.99

COZY VANILLA & COCONUT

Envelop yourself in a cozy cloud of comforting vanilla, creamy coconut and calming chamomile.

Free from parabens, mineral oil, silicone, phthalates and dyes.



SENSES Fresh Bergamot / Sparkling Grapefruit



FRESH BERGAMOT & WILD MINT
A fresh bouquet of dewy flowers mixed with spicy bergamot, clean wild mint and luminous solar musk.

Free from parabens, mineral oil, silicone, phthalates and dyes.

Hand Cream
With shea butter and antioxidants.
2.5 fl. oz. **852-498** reg. \$6
\$4.99

Hand Soap
With moisturizing glycerin.
10.1 fl. oz. **852-297** reg. \$13.99
\$10.99

Shower Gel
Coconut-derived cleanser.
10 fl. oz. **034-873**
reg. \$17
\$13.99



SPARKLING GRAPEFRUIT & ORANGE BLOSSOM
A juicy mix of zesty grapefruit, bright orange blossom, delicate honeysuckle and luscious peach.

Hand Cream
With shea butter and antioxidants.
2.5 fl. oz. **852-120** reg. \$6
\$4.99

Hand Soap
With moisturizing glycerin.
10.1 fl. oz. **852-115** reg. \$13.99
\$10.99

Body Mist
With refreshing aloe vera extract.
8 fl. oz. **034-687**
reg. \$18
\$14.99



SENSES Bubble Bath / Shower Gel



Cherry Blossom Bubble Bath
Flirty and sweet.
24 fl. oz.
425-033
reg. \$11
\$8.99



Vanilla Cream Bubble Bath
Rich and creamy.
24 fl. oz.
214-220
reg. \$11
\$8.99



Cucumber Melon Bubble Bath
Fresh and sweet.
24 fl. oz.
688-950
reg. \$11
\$8.99



Orange & Honeysuckle Bubble Bath
Fresh and sunny.
24 fl. oz.
047-808
reg. \$11
\$8.99



Endless Ocean Bubble Bath
Marine and breezy.
24 fl. oz.
425-048
reg. \$11
\$8.99



Lily & Honeysuckle Blossom Bubble Bath
Fragrant and refreshing.
24 fl. oz.
423-394
reg. \$11
\$8.99



Soft Pink Bubble Bath
Lilac and rose.
24 fl. oz.
425-052
reg. \$11
\$8.99



Sensitive Skin Bubble Bath
Chamomile scent. 24 fl. oz.
213-151
reg. \$11
\$8.99



Lavender Garden Bubble Bath
Soft and serene.
24 fl. oz.
424-735
reg. \$11
\$8.99



Blushing Cherry Blossom Hydrating Shower Gel
5 fl. oz.
423-299
reg. \$6
\$3.69



Silky Vanilla Hydrating Shower Gel
5 fl. oz.
462-105
reg. \$6
\$3.69



Fresh Cucumber & Melon Hydrating Shower Gel
5 fl. oz.
462-071
reg. \$6
\$3.69



Juicy Pomegranate & Mango Hydrating Shower Gel
5 fl. oz.
462-139
reg. \$6
\$3.69



Exfoliation Mitt
Helps remove dead skin, and keeps skin feeling soft and smooth. Microfiber jacquard, with nylon spandex cuff. **439-734 reg. \$11 \$8.99**



Body Massager
Helps stimulate circulation and relieve tension in muscles, especially in back and limbs. Fits into palm for easy control and flexibility with customizable pressure. **439-920 reg. \$11 \$8.99**



Smooth Moves Anti-Cellulite Massager
Use with gel to help firm and smooth skin. Rotating rollers help promote circulation and reduce the appearance of cellulite. Plug-in device. **011-296 reg. \$70 \$62.99**



Smooth Moves Anti-Cellulite Cooling Gel
L-carnitine and chai hu help target fat cells. 6.7 fl. oz. **722-722 reg. \$21 \$12.99**



Affirm Yourself Firming Body Cream
Caffeine complex helps skin look more toned. 6.7 fl. oz. **522-970 reg. \$21 \$12.99**



recharge

Avon Aromatherapy Body Lotion Bright Day Ahead
Charge your day with positive energy. With citrus and ginger fragrance oils to uplift your mood. 5.8 fl. oz. **584-670 reg. \$17 \$13.99**



refresh

Avon Aromatherapy Body Lotion Bye-Bye Stress
Take a moment to de-stress. With refreshing spearmint and eucalyptus fragrance oils for stress relief and mental clarity. 5.8 fl. oz. **584-684 reg. \$17 \$13.99**



relax

Avon Aromatherapy Body Lotion Sleep Tight Zzz
Unwind after a long day. With rose and lavender fragrance oils to help promote a restful sleep. 5.8 fl. oz. **584-866 reg. \$17 \$13.99**



Avon Aromatherapy Minding My Mood 4-in-1 Essential Oil Blends
Natural multipurpose fragrance oils.
Energize With lively mandarin and stimulating ylang-ylang.
Calm With comforting lavender and soothing star anise. Each, 1.7 fl. oz. **606-376 reg. \$32 \$25.99 boxed set of 2**



MOISTURE THERAPY / PHYSIOGEL / MICROBIOME

Moisture Therapy Calming Relief Hand Cream
With colloidal oatmeal. Relieves the itchiness associated with dry hands. 4.2 fl. oz. **786-349** reg. \$6 **\$2.69**



Moisture Therapy Intensive Healing & Repair Hand Cream
Relieves extremely dry, chapped hands. Fragrance-free. 4.2 fl. oz. **482-937** reg. \$6 **\$2.69**



Moisture Therapy Intensive Healing & Repair Extra Strength Cream
24-hour moisturization. Fragrance-free. 5.3 oz. net wt. **772-972** reg. \$8 **\$5.39**



Physiogel Hypoallergenic Daily Moisture Therapy Dermo-Cleanser for face
Soap-free facial cleanser for dry and sensitive skin. 5 fl. oz. **094-384** reg. \$24 **\$18.99**



Physiogel Daily Moisture Therapy Facial Cream*
For normal to dry sensitive skin. 5.1 fl. oz. **847-511** reg. \$42 **\$33.49**



*The National Eczema Association has awarded the Seal of Acceptance™ to Physiogel Hypoallergenic Daily Moisture Therapy Facial Cream.



Moisture Therapy Bonus-Size Body Lotions
Each, 33.8 fl. oz. reg. \$20 **\$14.99 each**

Intensive Healing & Repair Body Lotion
72-hour moisture for extra-dry skin. Fragrance-free. **611-644**

Daily Skin Defense Body Lotion
Helps restore moisture to everyday dry skin. **603-028**

Calming Relief Body Lotion
Soothes and relieves dry, itchy skin. Fragrance-free. **611-663**



Moisture Therapy Balance + Soothe Body Lotion
Skin looks softer and healthier. 13.2 fl. oz. **438-082** reg. \$25 **\$20**

Moisture Therapy Balance + Soothe Body Wash
Softens as it gently cleanses. 13.2 fl. oz. **438-078** reg. \$23 **\$18**

Avon Microbiome by REACH® Hygiene Deodorant Stick
Floral citrus scent. Aluminum-free. 24-hour odor protection. 2.65 oz. net wt. **524-528** reg. \$13 **\$10.99**





Veilment CBD Dry Body Oil
Lightweight. Nongreasy. Quickly nourishes skin with instantly replenishing hydration while it helps reduce redness and soothe irritation so skin looks healthy and radiant. Free of fragrance, mineral oil, parabens, phthalates and THC. 3.73 fl. oz. **869-485** reg. \$37 **\$30**



Veilment CBD Nourishing Body Cream
Skin feels soft, smooth and nourished. Jasmine scent. No THC. 5 fl. oz. **524-513** reg. \$33 **\$29.50**



Veilment CBD Nourishing Body Cream (Tube)
Same formula as original, now in a convenient tube. Skin feels soft, smooth and nourished. Jasmine scent. No THC. 6.7 fl. oz. **254-229** reg. \$38 **\$33**



Veilment CBD Soothing & Nourishing Body Cream
Concentrated formula. Visibly soothes and smooths. Geranium scent. No THC. 1.7 fl. oz. **524-509** reg. \$33 **\$29.50**



Veilment Hemp Seed Oil Dry Body Oil
Light, easily absorbed. Helps deeply nourish and hydrate dry and irritated skin. Fragrance-free. Hypoallergenic. 5 fl. oz. **564-106** reg. \$35 **\$28**



Veilment Lumière Sunless Tanning Serum
Mix and blend into daily body moisturizer for a customized, natural glow. Suitable for different skin tones. With skin-nourishing hemp seed oil. Each, 1.01 fl. oz. reg. \$24 **\$19.99 each**



Light/Medium 422-307

Medium/Dark 422-326



An innovative exfoliating body wash that cools and refreshes with an ultimate veil of moisture

Glacial Water Cooling Body Scrub & Cleanser
Fresh Canadian glacier water with gently exfoliating apricot seed, moisturizing ceramides, cooling menthol and a clean peppermint scent. 13.5 fl. oz. **735-399** reg. \$15 **\$13.69**

HIMALAYA PINK SALT
Calming sage scent.

Exfoliating Soap
Daily body scrub and cleansing bar, with Himalayan pink salt, walnut shell, apricot seed and cranberry powder. 5.3 oz. net wt. **260-440** reg. \$8 **\$6**

Body Scrub & Cleanser
Himalayan pink salt. 13.5 fl. oz. **708-252** reg. \$15 **\$13.69**



Dead Sea Salt Body Scrub & Cleanser
Israeli Dead Sea salt. Energizing citrus-ginger scent. 13.5 fl. oz. **707-988** reg. \$15 **\$13.69**



Black Rose Body Scrub & Cleanser
French rose oil and apricot-seed powder. Aromatic black rose scent. 13.5 fl. oz. **707-969** reg. \$15 **\$13.69**





- protects against mosquitoes, deer ticks, no-see-ums, sandflies, gnats and biting midges
- repels deer ticks that may carry and transmit Lyme disease
- DEET-free/PABA-free
- water-resistant
- SPF 28 & SPF 30

Expedition for all-in-one protection from sun+bugs

BUG GUARD PLUS IR3535® EXPEDITION

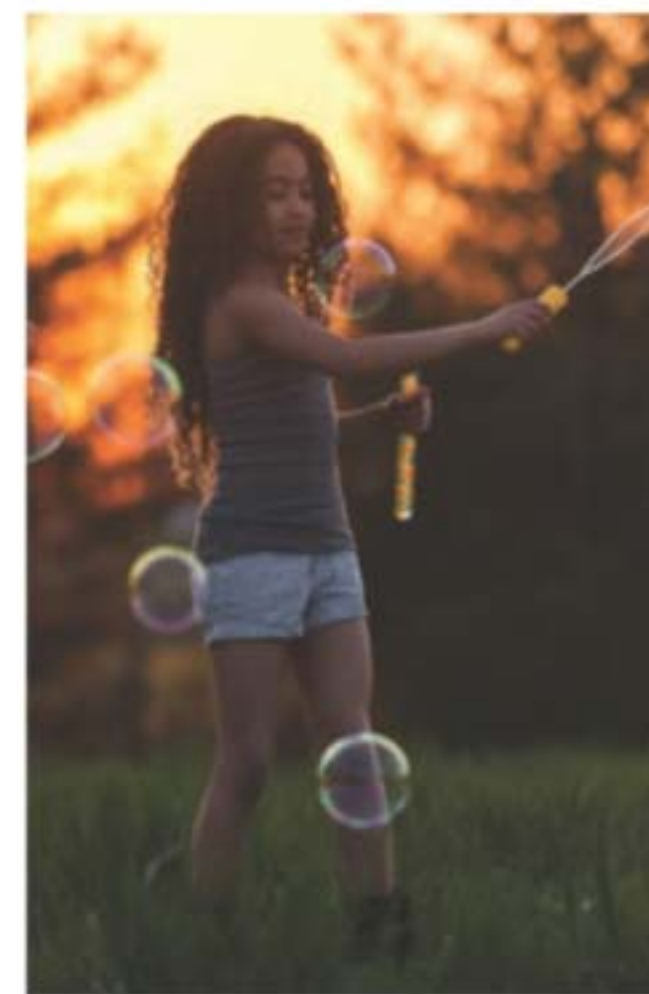
No need to wash off. Dermatologist-tested.

A. Aerosol Spray SPF 28
Repels mosquitoes for 8 hours, deer ticks for 12 hours. 4 oz. net wt. 521-370 reg. \$20 \$14.99

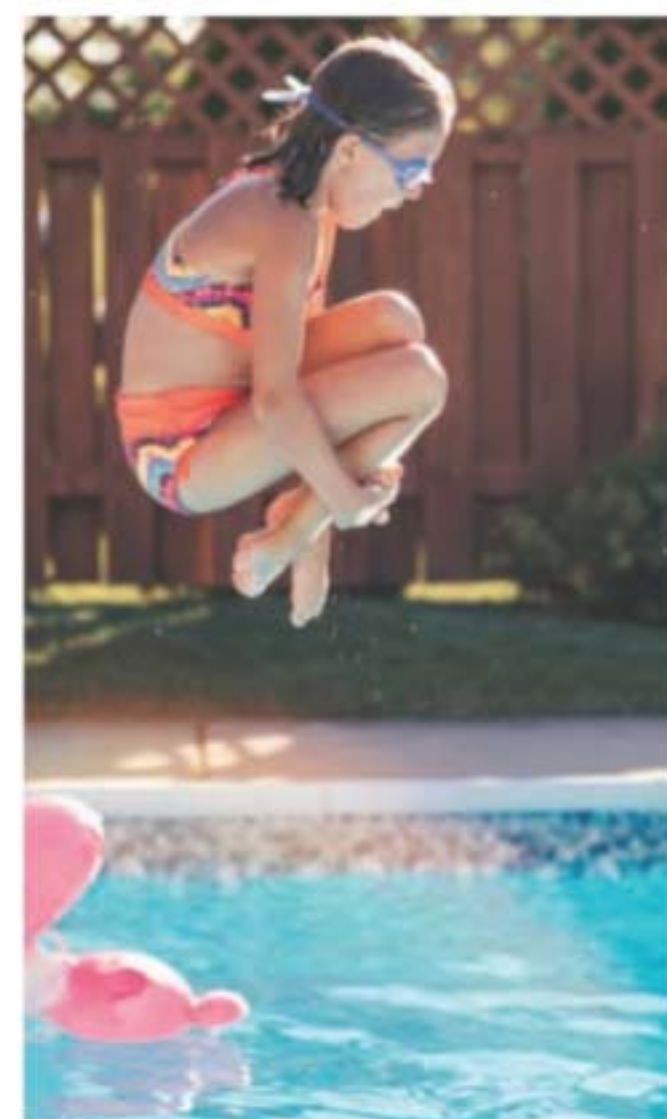
B. Family Size Pump Spray SPF 30
8 fl. oz. 255-259 reg. \$24 \$17.99

C. Pump Spray SPF 30
Repels mosquitoes for 8 hours, deer ticks for 10 hours. 4 fl. oz. 255-278 reg. \$15 \$9.99

Read and follow label directions and precautions.



- protects against mosquitoes, deer ticks, sandflies, no-see-ums, gnats, biting midges and black flies
- repels deer ticks that may carry and transmit Lyme disease
- DEET-free/PABA-free
- with vitamin E & aloe



Gentle Breeze protects against sun+bugs+water

- SPF 30
- water-resistant
- DEET-free/PABA-free
- with vitamin E & aloe
- repels mosquitoes that may carry and transmit the Zika virus

BUG GUARD PLUS IR3535® GENTLE BREEZE SPF 30 LOTION
No need to wash off. Dermatologist-tested. 4 fl. oz. 851-324 reg. \$15 \$9.99



Anti-Itch Spray*
Provides temporary itch relief from insect bites. 2 fl. oz. 972-031 reg. \$11 \$7.69

*Does not repel insects.

Picaridin for when bugs are most active dawn+dusk



BUG GUARD PLUS PICARIDIN

A. Travel Size Pump Spray
2 fl. oz. 009-600 reg. \$12 \$8.99

B. Pump Spray
Repels mosquitoes for 8 hours, deer ticks for 12 hours. 4 fl. oz. 255-373 reg. \$15 \$9.99

C. Family Size Pump Spray
8 fl. oz. 255-187 reg. \$24 \$17.99

D. Towelettes
Repels mosquitoes for 8 hours, deer ticks for 12 hours. Resealable bag holds 8 packets. Each towelette, 9" L x 5 1/2" W. Each, .3 fl. oz. 269-562 reg. \$16 \$11.69 pack of 8

E. Aerosol Spray**
Repels mosquitoes for 6 hours, deer ticks for 7 hours. 4 oz. net wt. 315-243 reg. \$20 \$14.99

Read and follow label directions and precautions. **Aerosol Spray does not contain aloe.



Avon Shower Brush
Long handle to easily reach down back. Brush helps to remove dead skin cells as it cleanses. Back of brush features many massage nubs. Non-slip comfort handle has a convenient hanging loop for easy storing and allows brush to dry quickly.
904-727 reg. \$10 \$7.99

Veilment Care Moisturizing Bar Soap
Derived from olive oil and infused with coconut oil.
2.8 oz. net wt.
380-864 reg. \$2.50 \$1.99



Moisture Therapy Intensive Healing & Repair Moisturizing Lip Treatment Balm
.14 oz. net wt.
285-117 reg. \$2 99¢



Avon Flavor Savers Lip Balm
Vanilla **209-501**
Melon **209-334**
Each, .14 oz. net wt.
reg. \$2 99¢ each



Veilment Care Lip Balm
Infused with naturally moisturizing jojoba oil and coconut oil to keep lips soft and supple all day. Delicately scented and tinted.
Cherry **604-168**
Strawberry **602-720**
Each, .14 oz. net wt.
reg. \$2 99¢ each



DEODORANTS

Roll-On Anti-Perspirant Deodorant
Each, 2.6 fl. oz. reg. \$3.60
\$2.69 each



Candid **656-095**
Far Away **836-226**
Haiku **836-264**
Imari **180-887**
Rare Gold **836-250**
Rare Pearls **906-897**
Night Magic Evening Musk **836-298**
Odyssey **836-317**
Sweet Honesty **941-579**
Timeless **941-583**



On Duty Unscented **926-820**
On Duty Sport **094-365**
On Duty Original **393-970**
Cool Confidence Original **926-777**
Cool Confidence Baby Powder **926-815**
Feelin' Fresh Original **925-546**



Black Suede **337-403**
Mesmerize **663-442**
Wild Country **941-602**

Perfumed Liquid Deodorant
Soft floral scent.
2 fl. oz.
687-681 reg. \$6 \$4.50



FOOT WORKS

**Overnight
Renewing
Cream**
3.4 fl. oz.
295-205
reg. \$9
\$5.99



**Deep
Moisturizing
Cream**
2.5 fl. oz.
308-962
reg. \$6
\$4.69



**Intensive
Moisture
Foot
Cream**
Suitable for
diabetics.
2.5 fl. oz.
302-012
reg. \$6
\$4.99



**Foot Works
Intensive
Callus Cream**
3.4 fl. oz.
851-310
reg. \$7
\$5.99



**Maximum
Strength
Cracked
Heel Cream**
2.5 fl. oz.
310-404
reg. \$7
\$5.99



**Arthritis
Achy
Foot and
Muscle
Cream**
2.5 fl. oz.
314-194
reg. \$7
\$5.99



Deodorizing Spray
Can also be used
in footwear.
3.5 oz. net wt.
313-236
reg. \$10
\$7.99



Pedicure Kit
Case, 3 1/2" L x 4 3/4" W. Metal,
man-made materials. Includes:
nail clipper, toenail clipper, nail file,
scissors, cuticle
pusher.
121-029
reg. \$11
\$8.39



Pedicure Tool
4-in-1 tool! Plastic.
3 1/8" L x 1 3/4" W x 1 1/2" H.
Includes: fine-grain file,
metal file, pumice, brush.
592-712 reg. \$11
\$8.39



PERIOE HIMALAYA / WHITENING ESSENTIALS / PERIOE MICROBIOME

**Perioe Himalaya Pink Salt
Toothpaste Tube Ice Mint**
Pink gel paste with aloe
vera essence beads.
Fluoride-free.
3.4 oz. net wt.
883-276 reg. \$6
\$5



**Whitening Essentials
Toothpaste
Perioe Black Charcoal
Clean Mint**
With 10X more activated
charcoal (compared to Blanc
Charcoal*) to help remove
stains and brighten teeth.
5.5 oz. net wt. 820-622
reg. \$11
\$9.19



*Sold online only.

**Whitening Essentials
Toothpaste
Original Cool Mint**
With highly effective
whitening agents to
keep your smile bright.
5.5 oz. net wt. 478-259
reg. \$10
\$8.19



Perioe Microbiome Toothpaste

With fluoride, plus microbiome technology containing prebiotics
to help maintain a healthy oral care balance.

Whitening
Helps remove stains and
brighten smile while fighting
cavities. With charcoal and
lemon extract. Cool Mint
flavor. 4.1 oz. net wt.
543-287 reg. \$7
\$5.99



Total Care
Helps fight plaque and
cavities, and promotes
fresh breath. With
charcoal and propolis
extract. Strong Mint flavor.
5.4 oz. net wt. 543-268
reg. \$6
\$4.99





LISTERINE® Ultraclean® Access® Flosser
Long ergonomic handle with nonslip grip. Unflavored floss heads. 239-360 reg. \$6
\$4.79
includes 8 floss heads



LISTERINE® Ultraclean® Access® Mint Flosser Refill
Disposable mint-flavored floss heads. For use with the LISTERINE® Ultraclean® Access® Flosser. 239-374 reg. \$7
\$5.64 pack of 28

LISTERINE® Ultraclean® Access® Unflavored Flosser Refill
Disposable unflavored floss heads. For use with the LISTERINE® Ultraclean® Access® Flosser. 239-393 reg. \$7
\$5.64 pack of 28



REACH® Unflavored Waxed Floss
Accepted by the American Dental Association. 55 yards. 239-317 reg. \$3
\$1.99



LISTERINE® Cool Mint™ Floss
Waxed coating is shred-resistant. Mint flavor for the feeling of clean, fresh breath. 55 yards. 239-355 reg. \$5
\$3.99



LISTERINE® Ultraclean® Mint Floss
With patented MICRO GROOVES® technology for greater plaque removal and superior cleaning. 30 yards. 239-321 reg. \$5
\$3.99

REACH® Interdental Brush
Angled 14°, like dental tools. Helps clean hard-to-reach spots, including back corners. Removes up to 30% more plaque compared to brushing alone! Customized for different spaces between teeth. Specially coated wire for gum protection. Ribbed edge for a better grip. reg. \$5
\$3.99 each



WIDE Pack of 10 630-164
TIGHT Pack of 10 630-934
EXTRA TIGHT Pack of 10 630-236

REACH® Professional Floss Picks
Acute angle (14°), like dental tools, for better reach. Sturdy pick easily fits between teeth. Dented handle for a better grip. Mint flavor. Pack of 90. 630-179 reg. \$6
\$4.59
pack of 90



GOOD VIBES TO GO

Perioe Dual Sonic Portable Electric Toothbrush



MICRO AND GENERAL BRISTLES FOR EXCEPTIONAL CLEANING

TWO-MINUTE TIMER WITH 30-SECOND INTERVALS/AUTO OFF FUNCTION

LONG HANDLE COMFORT GRIP

HYGIENIC CAP FOR ON-THE-GO CONVENIENCE!

❖ **Perioe Dual Sonic Portable Electric Toothbrush**
Battery powered—great on the go! Adjustable dual mode (strong/gentle). Up to 27,000 vibrations per minute. Four replaceable brush heads. AAA alkaline replaceable battery included. 432-376 reg. \$45
\$36.99
4 brush heads

❖ **Perioe Dual Sonic Portable Electric Toothbrush Refillable Heads**
Mix of four types of bristles targets different areas: molar, teeth surface, interdental, gum. Replace heads every three months. 433-430 reg. \$12
\$9.99 includes 2 brush heads



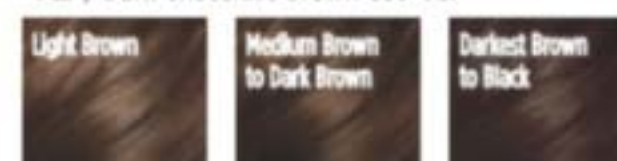


Elastine Salon de Color
100% grey coverage and rich, long-lasting color...without ammonia, parabens, mineral oil or benzophenone. For luxurious and healthy-looking hair. No appointment necessary. reg. \$9.99
\$7.99 each

BROWNS

Make faded brown color vibrant!

4B / Dark Chocolate Brown 039-727



5CB / Medium Chestnut Brown 040-110

**AUBURNS**

Refresh, brighten or deepen color.

6R / Light Auburn 044-608

**BLONDES**

Lighten roots or completely color.

7BL / Natural Dark Blonde 047-827



Advance Techniques 360 Nourish with Moroccan Argan Oil Leave-In Treatment
Moisturizes dry, damaged hair. Infuses it with instant shine and silky smoothness. 2 fl. oz.
511-411
reg. \$16
\$11.69



Advance Techniques Dry Ends Serum
Helps mend and nourish split ends instantly. With pro-vitamin B. Hair looks smooth and silky. 2 fl. oz.
883-261
reg. \$11
\$7.99



Advance Techniques Daily Shine 2-in-1 Shampoo & Conditioner
Leaves hair feeling clean, conditioned and frizz-free. Suitable for daily use. 11.8 fl. oz.
803-230
reg. \$11
\$8.99

**KICK BRASS**

Visibly **repair damaged hair**. Keep it looking **vivid** and **brass-free** with healthy **shine**.

Elastine Salon de Color Color Vibe

Nonirritating formula, suitable for any hair/scalp type.

Purple Shampoo **436-109**

Purple Conditioner **436-955**

Each, 8.4 fl. oz. reg. \$17

\$13.99 each

**WHAT'S IN IT****VIOLET PIGMENT**

helps neutralize brassy yellow and orange tones

CAMELLIA OIL & GREEN TEA EXTRACT

help protect and define hair color

- **HYDROLYZED KERATIN**
- **PANTHENOL • COLLAGEN**

help repair weakened and damaged hair

HYALURONIC ACID

helps hydrate hair and scalp and reduce frizziness

APPLE CIDER VINEGAR

helps boost radiance



Root Touch-Up
An instant way to cover up your roots and bare spots. Built-in mirror. Each, .25 oz. net wt. reg. \$18
\$15.99 each

SIMULATION

before touch-up

after touch-up



Reddish Brown
243-627

Light Brown
244-642

Dark Brown
245-213

Black
245-251

ELASTINE PROPOLITHERA

Volumizing

Enhances texture so hair looks fuller, thicker, stronger.

Each, 16.9 fl. oz.
A. Shampoo
892-607
B. Conditioner
892-870

Damage Repair

Helps hair appear smooth and manageable.

Each, 16.9 fl. oz.
C. Shampoo
053-082
D. Conditioner
638-681

E. Hair Oil Serum

Helps to strengthen, protect, moisturize and smooth hair, and to add shine while styling.

5.7 fl. oz. 895-190

F. Hair Mask

Enriched with nutrients to help deeply nourish hair and mend damaged split ends.

10.1 fl. oz. 150-301

reg. \$18

\$15.99 each



ELASTINE PROPOLITHERA BEE CURLY

A patented technology* that helps care for curly hair to create silky, super-lustrous curls even after the first use.

Shampoo
16.9 fl. oz.
059-975
reg. \$29
\$23.99



Conditioner
16.9 fl. oz.
060-846
reg. \$29
\$23.99



Serum
5.7 fl. oz.
061-565
reg. \$29
\$23.99



*Shampoo and conditioner only.

Aloe Dual-Active Hair Serum

Intense hydration with vitamins, minerals and other nutrients to bring damaged or chemically processed hair back to life.

3.4 fl. oz.
102-585
reg. \$30
\$25



Leave-In Conditioner

Hydrates and nourishes dry hair, infusing it with rich luster.

8.1 fl. oz.
102-570
reg. \$19
\$15



Serum Treatment

Upon contact with water, nutrient-rich, moisturizing liquid visibly transforms into a creamy formula.

7.8 fl. oz.
359-821
reg. \$22
\$18



Curl Cream

Rich hydration for bouncy, defined curls. Reduces frizz for a smooth, healthy-looking shine.

5 fl. oz.
102-475
reg. \$19
\$15



Rejuvenating hair treatment for a lustrous-looking shine enriched with **GOLD-Polypeptide Protein Complex** to help repair and strengthen damaged hair and keep it looking silky smooth and voluminous.

Hair Deep Conditioning Treatment Cap

Nourishing deep-conditioning treatment mask replenishes moisture in one cap application. With the bee goodness of propolis (tree sap and beeswax), honey and royal jelly for healthy-looking body and shine. Berry, rose and peony scent. Use as needed. Single-use cap. 1.4 oz. net wt.

053-761
reg. \$8
\$6.99



1 After shampooing, remove excess water. Cover all hair with cap.



2 Adjust cap to size of your head.



3 Lightly massage for even absorption of nutrients.



4 Remove cap after 10-15 minutes. Rinse thoroughly.



SPRING IS IN THE HAIR!

Shampoo and conditioner in one, with patented 2-in-1 technology, moisturizes hair while controlling odors so it looks and feels fresh and smooth, with a **fragranced formula** to give it a forever-springtime scent. Free of sulfates and parabens. Suitable for daily use.

Love Me

Jasmine and ylang-ylang. 8.4 fl. oz.
154-857 reg. \$16
\$12.99

Fresh Citrus

Lime, mandarin and basil. 8.4 fl. oz.
154-876 reg. \$16
\$12.99

Pure Breeze

White rose and Bulgarian rose. 8.4 fl. oz.
154-861 reg. \$16
\$12.99

STYLING BRUSH-UP

for all hair types

NEW

Avon Detangling Comb

Glides through wet or dry hair without tugging or pulling.
504-820
reg. \$5.99
\$4.99



NEW

Avon Blow-Dry Round Hairbrush

Smooth and straighten, or curl and wave. Easy, painless styling with comfort handle.
504-800
reg. \$17.99
\$14.99



NEW

Avon Detangling Hairbrush

Flexible bristles move through knots and tangles and minimize pain and split ends. 504-815
reg. \$12.99
\$9.99



NEW

Avon Compact Hairbrush

Pop it in your purse and go. Use on wet or dry hair. 504-743
reg. \$9.99
\$7.99



Elastine HempharmX

Shampoo and conditioner with cold-extracted hemp seed oil. Contains omega 3-6-9, known to help moisturize and nourish hair and prevent breakage with weightless hydration that delivers full volume. Vegan formulas. Both silicone-free. Shampoo is sulfate-free.

Hydrating Shampoo
359-836
Hydrating Conditioner
360-544
Each, 13.5 fl. oz.
reg. \$24
\$20 each



Elastine CBD & Hemp Seed Oil Cooling & Soothing Conditioner

Helps moisturize dry hair. Free from parabens and sulfates. No THC. 11.8 fl. oz.
436-989
reg. \$23
\$19



Elastine Moisture Essentials

With richly moisturizing ceramide to help visibly strengthen strands, protect hair from wear and tear, and promote elasticity and shine.

ceramide + biotin

Helps dry, damaged hair look and feel fuller and healthier.
Shampoo 495-106
Conditioner 495-110
Each, 12.7 fl. oz. reg. \$9
\$6.99 each



ceramide + argan oil

Helps moisturize and reduce split ends, and keeps locks looking shiny and smooth.
Shampoo 495-125
Conditioner 495-130
Each, 12.7 fl. oz. reg. \$9
\$6.99 each



want volume?

Rosemary & Sea Salt

With rosemary to help promote thicker hair and scalp health, sea salt to add body.

Volumizing Shampoo 240-556

Volumizing Conditioner 246-831

Each, 6.7 fl. oz.
reg. \$4.50
\$3.79
each



Elastine Botanicals

Infused with revitalizing babassu seed oil, chamomile flower water and lemon chestnut extract, and pH balanced, like healthy hair, it helps bring damaged hair back to life, adding dewy moisture for a smooth, natural-looking sheen.

NO • Parabens • Silicone • Mineral oil
• Triclocarban • Triclosan

dry hair?

Cherry Blossom & Hyaluronic Acid

Moisturize dry, damaged hair with our hyaluronic acid-infused formula as thirsty strands drink it up.

Moisturizing Shampoo 239-943

Moisturizing Conditioner
240-059

Each, 6.7 fl. oz.
reg. \$4.50
\$3.79
each



frizzy hair?

Argan & Castor

With nourishing ingredients, helps protect hair from damage and breakage. Adds luster and smoothness.

Anti-Frizz Shampoo 150-866

Anti-Frizz Conditioner
150-904

Each, 6.7 fl. oz.
reg. \$5.39
\$4.49
each



CHI® ESSENTIALS / CHI® ESSENTIALS REVIVE KERATIN + BONDING

**CHI® Essentials
Replenishing Shampoo**
Gentle daily shampoo with essential vitamins, minerals and amino acids. No sulfates or parabens, so it won't strip hair of natural oils. Safe for color-treated hair. 12 fl. oz. **589-140** reg. \$20 **\$16.99**



**CHI® Essentials
Moisturizing Conditioner**
Lightweight daily conditioner. Infused with aloe to lock in rich moisture. With vitamins A and B to help strengthen hair from roots to ends, increase elasticity and help smooth split ends and frizz. 12 fl. oz. **589-409** reg. \$20 **\$16.99**



**CHI® Essentials
Repairing Serum**
Deeply penetrating-yet-lightweight serum helps strengthen, protect, moisturize and smooth. With vitamin A to help seal split ends, and rosemary to help boost volume and shine. 6 fl. oz. **589-413** reg. \$33 **\$27.59**



**CHI® Essentials
Revive Keratin + Bonding
Restoring Shampoo**
Cleanses, moisturizes and protects against split ends and frizz. 12 fl. oz. **451-192** reg. \$25 **\$19.99**

**CHI® Essentials
Revive Keratin + Bonding
Protecting Serum**
Apply to damp or dry hair for smoothness and shine, and as a hair shield from the sun. 3 fl. oz. **451-340** reg. \$42 **\$34.99**

**CHI® Essentials
Revive Keratin + Bonding
Restoring Conditioner**
Helps restore dry, damaged and brittle hair. 12 fl. oz. **451-211** reg. \$25 **\$19.99**



CHI® PRO STYLERS & TOOLS for salon-quality results

**CHI® ENVIRO 54®
Natural Hold Hair Spray**
For brushable hold. Lightweight. Fast-drying. No build-up. Anti-humidity. Thermal protectant for blow-drying. With silk to help build hair's strength and resilience, and natural botanicals to add volume and enhance shine. Paraben-free. 10 oz. net wt. **908-450** reg. \$26.50 **\$21.50**



BioSilk® Silk Therapy®
Replenishes and reconstructs to help repair and protect all hair types. Tames frizz and flyaways and leaves hair silky smooth with reflective shine. Helps shield hair from UV rays, heat and humidity. 5.64 fl. oz. **011-349** reg. \$35 **\$28.99**



**CHI® 1" Volcanic Lava
Ceramic Pro Spin 'n' Curl**
Preset temperature controls with adjustable timers and LED screen display. For any hair type. 12" L. Dual voltage for travel. 11 ft. swivel cord. Use only as directed. **471-527** reg. \$199 **\$179**



ATTACHMENTS
INCLUDED



**CHI® Advanced Ionic
Compact Hair Dryer**
Powerful 1875-watt ion generator emits negative ions to reduce drying time. Lightweight, compact design. Rapid Clean Technology with Blue LED light for cleaner air during styling. Adjustable heat and air-speed settings. Removable filter. 6 1/2 ft. cord. Use only as directed. **471-474** reg. \$150 **\$135**





Premium Scalp Cleansing Brush
Helps promote cleansing of residue while massaging to reinvigorate health of scalp as it helps to stimulate circulation. **065-776**
reg. \$19
\$16



Scalp Fortifying Serum Treatment
Moisturizes and helps support healthy hair roots and growth.
6.7 fl. oz.
782-271
reg. \$35
\$29



Scalp Fortifying Hair-Thickening Shampoo
With coconut oil, cleanses as it helps moisturize dry scalp and hair.
13.5 fl. oz.
778-014
reg. \$35
\$29



KEEP SCALP & HAIR FLAKE-FREE

What's in it:

3% SALICYLIC ACID
Clears and helps prevent flakes and itching associated with dandruff.

Panthenol
Helps hydrate, soothe and protect hair.

NIACINAMIDE
Helps refresh scalp by helping to retain moisture.

BIOTIN (Vitamin B7)
Known to help visibly improve hair volume.

CAFFEINE
Known to help visibly improve scalp condition.

GINGER, ROSEMARY, FRESH MINT
Three plant-derived scalp-care ingredients.

MENTHOL
Helps scalp feel cool, clean and refreshed.

No sulfates or parabens.



Anti-Dandruff Scalp Care Shampoo
No silicones.
10.1 fl. oz. **451-412**
reg. \$27
\$21.99

Anti-Dandruff Scalp Care 2-in-1 Shampoo and Conditioner
10.1 fl. oz. **451-431**
reg. \$27
\$21.99

THE WOW DEAL

5-PIECE SET
ONLY \$40

\$156 VALUE

965-306

COLLECTION INCLUDES:

fmg Makeup
Remover Wipes
Pack of 24 wipes.
\$9 value

JUMBO SIZE
Anew Platinum
Night Cream
2.5 oz. net wt.
\$52 value

Anew
Power Serum
1 fl. oz.
\$45 value

CHI® Essentials Revive
Keratin + Bonding
Restoring Shampoo
12 fl. oz.
\$25 value

CHI® Essentials Revive
Keratin + Bonding
Restoring Conditioner
12 fl. oz.
\$25 value

SMOOTH, REFRESH AND REVITALIZE
YOUR SKIN AND HAIR.



Enjoy special prices and offers with an Avon account or Representative.

© 2023 The Avon Company. All rights reserved.

CAMPAIGN 24, 2023

THE AVON COMPANY
165 BROADWAY, NY, NY 10006

To place an order, call:



Pk of 10 59371-9



Single 59367-9

Brochure effective until _____

Find me at www.avon.com/repstore/ _____



Not applicable in
Puerto Rico or
the Caribbean.



See our commitment at
www.avon.com/animal-welfare

RETURN POLICY If you are not satisfied, return any item within 45 days. View Avon's full 45-Day Return Policy at avon.com/shipping-returns.