

AVOON

CAMPAIGN 7

+FREE GIFT
DETAILS INSIDE

100% Mattifaction Guaranteed!

NEW! FMG GLIMMER MATTE LIPSTICK

modern mattes

VIVID COLOR. VELVETY FEEL.

Creamy and comfortable, **fmg Glimmer Matte Lipstick** delivers richly pigmented shades in a featherlight formula that kisses lips for our dreamiest matte yet!

free

fmg Match Set
Finishing Powder To Go
with any \$20 makeup
purchase, pages 3-11,
80-87. \$19 value.

Sold separately on Avon.com.
Limited quantities.









NEW

fmg Glimmer Matte Lipstick

Non-drying formula with pomegranate extract to help provide antioxidant benefits. Buildable medium-to-full coverage. Formulated without parabens, talc, sulfates and phthalates. .1 oz. net wt. reg. \$12

\$8.99



- | | |
|---|---|
|  |  |
| Sunset Mauve
171-360 | Terra Nova
171-340 |
|  |  |
| Garnet Sky
171-393 | Wild Orchid
171-431 |
|  |  |
| Chili
171-355 | Willow
171-450 |



fmg Glimmer Cream Eyeliner
Long-wearing formula with soft sheen finish. Retractable. Formulated without parabens, sulfates and talc. .01 oz. net wt. reg. \$9

\$3.99



fmg Glimmer Lipliner
Long-wearing creamy formula with vitamin E. Prevents feathering. Matte finish. Retractable. Formulated without parabens, sulfates and talc. .01 oz. net wt. reg. \$9

\$3.99



TPSY Drunk Shiny Lip Oil
Glossy formula with jojoba, argan and castor oils. Formulated without parabens, sulfates, phthalates and talc. .13 oz. net wt. reg. \$17

\$13



fmg LOVE Lip Butter
Sheer, high-shine formula with cupuaçu seed butter, mango extract and apricot kernel and olive fruit oils. Buildable coverage. Formulated without parabens, sulfates and phthalates. .09 oz. net wt. reg. \$18

\$13.99



fmg Glimmer Diamond Eyeliner
Long-wearing formula with subtle sparkle. Retractable. Formulated without parabens, sulfates and talc. .01 oz. net wt. reg. \$9

\$3.99



fmg Glimmer Waterproof Eyeliner
Long-wearing, smudge- and waterproof formula. Retractable. Formulated without parabens, sulfates and talc. .01 oz. net wt. reg. \$9

\$3.99



TPSY Forever Lip Marker
Vibrant long-wearing formula with castor and sunflower oils. Matte finish. Formulated without parabens, sulfates and phthalates. .08 fl. oz. reg. \$17

\$13



fmg Glimmer Birthday Balm Lip Crayon
Sheer, soft shine formula with non-GMO shea butter. Formulated without parabens and gluten. .1 oz. net wt. reg. \$15

\$11.99



fmg Glimmer Brow Definer
Long-wearing formula with castor and coconut oils. Smudge-, transfer-, sweat- and waterproof. Retractable. Formulated without parabens, sulfates and talc. .01 oz. net wt. reg. \$9

\$3.99



fmg Glimmer Liquid Eyeliner
Quick-drying long-lasting formula. Transfer-, sweat- and waterproof. Matte finish. Formulated without parabens, phthalates and fragrance. .037 fl. oz.

Blackest Black 354-380
reg. \$12
\$9.99



fmg Glimmer Always On Point Eyeliner
Built-in sharpener. Smudge- and waterproof. Formulated without parabens, sulfates and talc. .01 oz. net wt. reg. \$10

\$7.99



fmg Glimmer Satin Lipstick
Lightweight creamy formula with pomegranate extract. Buildable coverage. Satin finish. Formulated without parabens and sulfates. .10 oz. net wt. reg. \$12

\$8.99





fmg CathyCat Shadow Gaze Matte Color Stick

Long-wearing formula will not budge or smudge. Buildable and blendable coverage. Matte finish. Formulated without parabens and fragrance. .0476 oz. net wt. reg. \$19

\$14.99



Taupe 958-126 Espresso 958-896 Buff 956-912 Rosewood 958-547



Blush 958-638 Berry 958-619 Aubergine 786-960 Azure 959-213



Smokeshow 787-068 Mauve 958-331 Moss 786-540 PeriWink 787-053



fmg Colors of LOVE Hi-Brow Brow Gel

Won't clump, smudge or flake. Matte finish. Formulated without parabens, phthalates and fragrance. .11 fl. oz. reg. \$18

\$13.99



Blonde 792-499 Soft Brown 792-522 Medium Brown 792-537 Brown Black 792-556



Clear Sculpting Gel 536-695



fmg LOVE at 1st Lash Mascara

Lash-loving volumizing and lengthening fibers. Won't clump, smudge or flake. Formulated without parabens and sulfates. **Blackest Black** .3 fl. oz. 698-670 **Waterproof Blackest Black** Cobra brush. Not shown. .29 fl. oz. 480-953 reg. \$18

\$13.99



fmg Glimmer Wash-Off Waterproof Mascara

Waterproof volume. Washes off easily with soap and water. Formulated without phthalates and fragrance. .21 oz. net wt. **Black 723-107** reg. \$12

\$8.99



fmg Glimmer Eyeshadow Quad

Soft powder formula lasts all day. No messy fallout. Buildable coverage. Available in Multi or All Matte finishes. Formulated without parabens and fragrance. .21 oz. total net wt. reg. \$15

\$11.99



MATTE Calypso 741-261 **MATTE** Tigress 741-333 **MATTE** Bombshell 741-170 **MATTE** Icon 741-439



MULTI Maven 884-750 **MULTI** Siren 901-493 **MULTI** Mistress 883-902 **MULTI** Goddess 901-330



MULTI Muse 880-459 **MULTI** Darling 880-789 **MULTI** Temptress 884-731 **MULTI** Idol 900-975



MULTI Minx 885-738 **MULTI** Vixen 901-474



fmg Cashmere Eyeshadow Palette

Long-wearing formula with crease-resistant wear. Satin, matte and sparkling finishes. Formulated without parabens, talc and fragrance. .63 oz. total net wt. reg. \$40

\$33



Enchanted Eyes 401-440 **Essential Eyes** 404-745



fmg Glimmer SuperShock Volumizing Mascara

Lash-building formula with plumping fibers. High-gloss finish. Won't clump, smudge or flake. Formulated without phthalates and fragrance. .338 fl. oz. **Black 698-829** reg. \$13

\$9.99



fmg Glimmer SuperExtend Nourishing Mascara

Long-wearing lengthening formula with vitamin E, argan and coconut oils. Won't clump, smudge or flake. Formulated without sulfates and talc. .237 fl. oz. **Black 698-848** **Brown Black 698-852** reg. \$13

\$9.99



fmg Cashmere Under Eye Primer

Helps diminish the look of dark circles and fine lines. With caffeine, green tea extract and vegan collagen. Formulated without parabens, phthalates and fragrance. .317 oz. net wt. **010-429** reg. \$24

\$19



fmg Cashmere Ultimate Volume Mascara

Long-wearing formula with biotin and collagen. Glossy black finish. Won't budge, smudge or transfer. Formulated without parabens, sulfates and talc. .27 fl. oz. **Rich Black 153-736** reg. \$23

\$18



fmg Glimmer Nail Lacquer
Nail-strengthening, long-wearing, no-chip formula. Gel-like cushion texture. Formulated without parabens and phthalates. .4 fl. oz. reg. \$12
\$8.99

- | | | | | |
|---|---|---|---|---|
|  |  |  |  |  |
| SATIN
Lost Galaxy Plum
598-911 | SATIN
Black Hole Burgundy
018-286 | SATIN
Supernova Red
018-267 | SATIN
Night Sky Berry
602-658 | SATIN High Magnitude Mauve
018-840 |
|  |  |  |  |  |
| SATIN
Lunar Tan
602-753 | SATIN
Cool Comet
602-830 | SATIN
Full Moon Flush
018-730 | METALLIC
Meteorite Rose
019-369 | METALLIC
Golden Galaxy
019-354 |



fmg Glimmer Lip & Cheek Stain
Highly pigmented long-wearing gel formula. Brush tip applicator. Transfer-proof. Formulated without parabens and fragrance. .19 fl. oz. reg. \$17

- \$12.99**
- | | |
|---|---|
|  |  |
| Plumeria
628-851 | Rosette
628-852 |



fmg Glimmer Powder Illuminator
Lightweight buildable formula with vitamin E. Radiant finish. Formulated without parabens, phthalates and fragrance. .35 oz. net wt. reg. \$14

- \$10.99**
- | | |
|---|---|
|  |  |
| Rosé
463-628 | Prosecco
905-580 |



fmg Glimmer Be Blushed Cheek Color
Creamy formula with vitamin E. Buildable coverage. Dewy finish. Formulated without parabens, phthalates and fragrance. .14 oz. net wt. reg. \$15

- \$11.99**
- | | | | | |
|---|---|---|---|---|
|  |  |  |  |  |
| Icy Petal
022-854 | Blushing Nude
022-911 | Golden Rose
022-840 | Tropical Peach
022-964 | Crushed Berry
022-945 |



fmg Glimmer Powder Blush
Weightless formula with ultrafine pearl and vitamin E. Buildable coverage. Matte finish. Formulated without parabens, phthalates and fragrance. .28 oz. net wt. reg. \$14

- \$10.99**
- | | |
|---|---|
|  |  |
| Petal Pink
618-209 | Pink Passion
618-213 |



fmg Glimmer Nail Base & Top Coat
Two-in-one base and top coat primes and shields nails. Glossy finish. Formulated without parabens and phthalates. .4 fl. oz. 018-161 reg. \$12

\$8.99



fmg Glimmer Nail Lacquer Eraser Pen
For a clean and perfected mani. Won't dry out nails or cuticles. Formulated without parabens and phthalates. .135 fl. oz. 704-443 reg. \$12

\$8.99



fmg Match Filter Serum Tint Foundation
Instantly hydrates, blurs flaws and evens tone. With hyaluronic acid, vitamin E and berry complex. Buildable coverage. Demi-matte finish. Formulated without talc, parabens and fragrance. .31 oz. net wt. reg. \$21

\$15.99



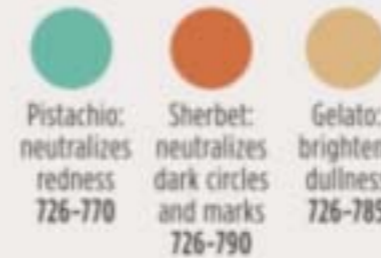
fmg Match Tint Radiant Tinted Moisturizer
Brightens skin tone, boosts moisture and blurs flaws. With passion fruit, chia and sunflower seed oils, vitamin E and pro-vitamin B5. Buildable coverage. Radiant finish. Formulated without parabens. 1 fl. oz. reg. \$14

\$10.99



fmg Match Wand Correcting Stick
Neutralizes unevenness, brightens and color corrects. Long-wearing formula with shea butter and vitamin E. Formulated without parabens, phthalates and sulfates. .21 oz. net wt. reg. \$18

\$13.99



Pistachio:
neutralizes
redness
726-770

Sherbet:
neutralizes
dark circles
and marks
726-790

Gelato:
brightens
dullness
726-785



fmg Match Set Finishing Powder
Controls shine, visibly blurs pores and fine lines and sets makeup. Mineral-infused formula. Matte finish. Formulated without talc, parabens and fragrance. .22 oz. net wt. 932-472 reg. \$19

\$14.99



fmg GLOKOLOR Lip Serum Pencil
Refreshes and smooths lips. With peppermint and argan oils. Formulated without parabens and fragrance. .06 oz. net wt. 787-508 reg. \$20

\$16



fmg GLOKOLOR Hybrid Face Mist
Instant boost of moisture to refresh skin. With aloe vera, agave and algae extracts. Formulated without parabens and sulfates. 2.7 fl. oz. 787-599 reg. \$24

\$20



fmg Match Prime Face Perfector
Flaw-blurring mattifying oil-free formula visibly minimizes pores and fine lines. Sheer coverage. Matte finish. Formulated without parabens. 1 fl. oz. 103-744 reg. \$17

\$12.99



fmg GLOKOLOR Hybrid Face Primer
Softens the appearance of imperfections. With aloe vera, agave and algae extracts. Formulated without parabens and sulfates. 1 fl. oz. 787-637 reg. \$24

\$20

free

ISA KNOX LXNEW
ULTIMATE
REJUVENATING
EYE SERUM

WITH ANY
\$40 SKIN CARE
PURCHASE,
PAGES 13-25
AND 68-73.
\$50 VALUE!

Sold separately on page 14.



Improve your Eye-Q

Eyes are first to show your age because skin around this area is thinner so it's prone to wrinkling. Treat eyes with TLC. Add an eye serum to your regimen.



Isa Knox LXNEW Ultimate Rejuvenating Day Cream

With paeonol, visibly reduces wrinkles and improves the look of elasticity, radiance and skin texture. With nutmeg to help visibly even skin tone. 1.7 fl. oz. **351-892** reg. \$50

\$39.99



Isa Knox LXNEW Ultimate Rejuvenating Dual Night Cream

With paeonol and macadamia oil. Volume Cream: Rice bran extract helps visibly plump skin. Firming Cream: Helps boost collagen and elastin. Each, .85 fl. oz.

564-015 reg. \$50

\$39.99



Isa Knox LXNEW Ultimate Rejuvenating Serum

With paeonol and ceramides, visibly improves elasticity, radiance and skin texture. Reduces the appearance of wrinkles. 1.35 fl. oz. **756-624** reg. \$56

\$44.99



Isa Knox LXNEW Ultimate Rejuvenating Eye Serum

Infused with paeonol and niacinamide to help visibly reduce fine lines around the eye area and depuff under-eye bags. 1 fl. oz. **567-177** reg. \$50

\$39.99



Isa Knox LXNEW Platinum Sculpting Neck and Chest Cream
With hibiscus extract, ceramide, shea butter, panthenol and squalane to help skin appear firmer, smoother and lifted. 1.7 fl. oz. **548-069** reg. \$50

\$39.99



Isa Knox LXNEW Ultimate Rejuvenating Multi-Corrector

Paeonol-infused serum with niacinamide and panthenol. Skin looks smoother and more youthful. 1.7 fl. oz. **496-595** reg. \$50

\$34.99



Isa Knox LXNEW Ultimate Rejuvenating Balm Stick

With peony extract, plus a firming complex featuring castor, moringa and argan oils. Apply to forehead, eyes and neck, or anywhere you want extra care. .24 fl. oz. **267-593** reg. \$24

\$19.99



Isa Knox LXNEW Platinum Sculpting Oil Serum

1.35 fl. oz. **318-720** reg. \$56

\$44.99

Isa Knox LXNEW Platinum Sculpting Day Cream

Infused with moisturizing hibiscus extract and ceramide. Visibly tightens facial contours. 1.7 fl. oz. **318-845** reg. \$50

\$39.99

Isa Knox LXNEW Platinum Sculpting Eye Cream

With hibiscus extract, panthenol and antioxidants. Leaves delicate eye area looking firmer, brighter and more defined. .84 fl. oz. **318-883** reg. \$50


\$39.99

Isa Knox LXNEW Platinum Sculpting Night Cream


With firming hibiscus extract, ceramide, squalane and shea butter. Skin looks firmer, smoother and more defined. 1.7 fl. oz. **318-850** reg. \$50

\$39.99

3X more powerful than a serum alone

Anew Ultimate Multi-Performance Day Cream Broad Spectrum SPF 25
See wrinkles fade and youthful vibrance return. 1.7 oz. net wt.
763-307 reg. \$42
\$27.99




Anew Ultimate Multi-Performance Night Cream
It works while you sleep to revive and recreate the look of youthful skin. 1.7 oz. net wt.
763-311 reg. \$42
\$27.99



A superior serum + a luxurious blend of precious oils = one supreme elixir

Anew Ultimate Supreme Dual Elixir
See a dramatic difference in even advanced signs of aging. Serum/Oil, .67 fl. oz. each.
588-421 reg. \$60
\$38.99



Anew Ultimate Supreme Eye Balm
Moisturizing formula infused with squalane, sunflower seed oil and antioxidant vitamin E. Wear alone or under makeup. .1 oz. net wt.
625-340 reg. \$45
\$26.99




Anew Ultimate Night Repair Serum
Visibly diminishes fine lines and improves tone and texture. With peptides, licorice, hyaluronic acid and niacinamide. Use PM before moisturizer. 1 fl. oz.
625-355 reg. \$45
\$26.99



Anew Ultimate Multi-Performance Eye System
Visibly smooths crow's-feet and de-puffs under-eye bags. Cream, .5 oz. net wt. Elixir, .09 oz. net wt.
854-433 reg. \$42
\$27.99



Anew Ultimate Supreme Advanced Performance Crème
With Black Pearl Extract. See a dramatic difference in deep wrinkles and skin radiance. 1.7 oz. net wt. 014-735 reg. \$60
\$38.99



Anew Ultimate Regimen Set
Includes three full-size moisturizers plus one try-it-size serum.

- Multi-Performance Day Cream Broad Spectrum SPF 25 1.7 oz. net wt.
- Multi-Performance Night Cream 1.7 oz. net wt.
- Multi-Performance Eye System Cream, .5 oz. net wt. Elixir, .09 oz. net wt.
- Anew Power Serum .24 fl. oz.

4-PIECE BOXED KIT
923-228 reg. \$128
\$54.99

Anew Platinum Sculpting Body Serum
 Skin looks firmer and smoother.
 With niacinamide, panthenol (pro-vitamin B5)
 and peptides, known to help boost moisture.
 6.7 fl. oz. 506-249 reg. \$45

\$26.99



Anew Platinum Firm and Sculpt Cream for Neck and Chest
 With Peptide Lifting Complex to treat the skin on your neck and chest, which is more vulnerable to wrinkles and sagging. Use PM after cleansing. 1.7 oz. net wt. 763-584 reg. \$42
\$27.99



Anew Platinum Day Cream Broad Spectrum SPF 25
 With Paxillium Technology to help defy gravity and Radiescent Microspheres to help visibly restore radiance. 1.7 oz. net wt. 184-146 reg. \$42
\$27.99



Anew Platinum Night Cream
 Skin appears smoother overnight, resculpted over time. 1.7 oz. net wt. 753-439 reg. \$42
\$27.99



Anew Platinum Eye & Lip Cream
 Dual applicator. .5 oz. net wt. 902-614 reg. \$42
\$27.99



Anew Platinum Age Delay Serum
 Visibly helps boost elasticity and lift facial contours. With niacinamide (vitamin B3) and panthenol (pro-vitamin B5), plus peptides. 1 fl. oz. 625-609 reg. \$45
\$26.99



Anew Platinum Regimen Set
 Includes three full-size moisturizers plus one try-it-size serum.
 • Day Cream Broad Spectrum SPF 25 1.7 oz. net wt.
 • Night Cream 1.7 oz. net wt.
 • Eye & Lip Cream .5 oz. net wt.
 • Anew Power Serum .24 fl. oz.

4-PIECE BOXED KIT
 923-467 reg. \$128
\$54.99



**Anew Vitamin C
Illuminating Priming
Moisturizer**

With natural citrus extracts.
Wear alone or under makeup.
1.7 fl. oz. 914-671 reg. \$34

\$18.99

**Anew Vitamin C
Brightening
Eye Cream**

.5 fl. oz. 953-602
reg. \$34

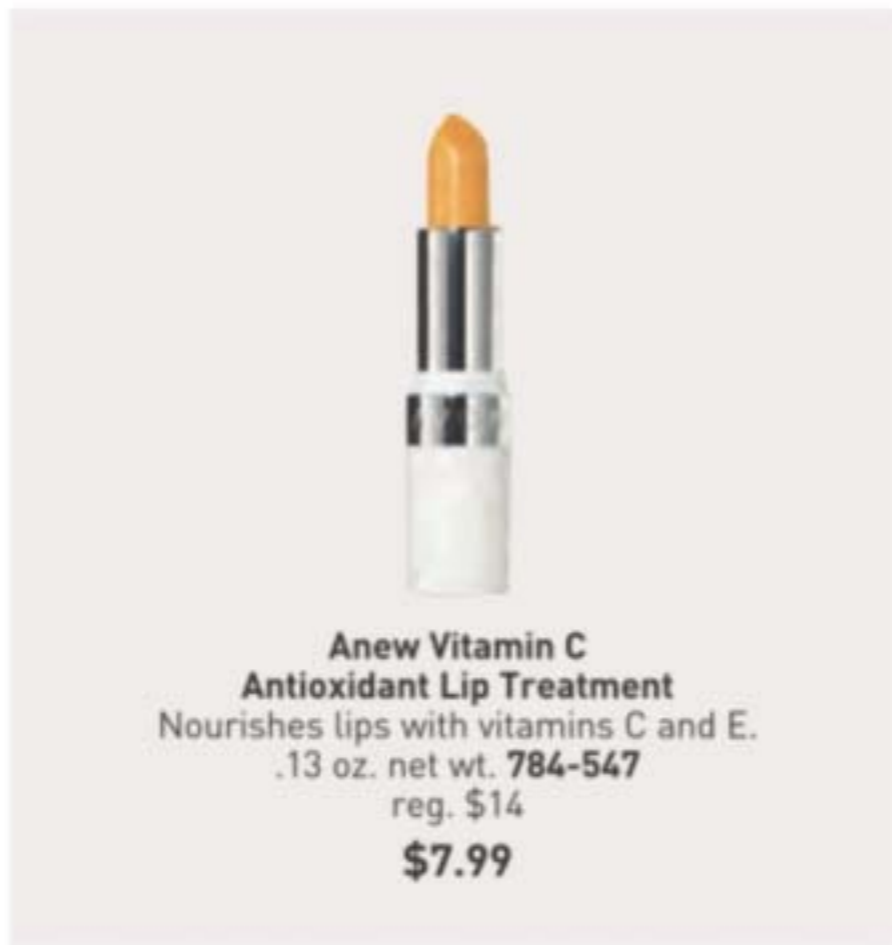
\$18.99



Anew Power Serum

See a powerful difference in hydration, smooth
texture, radiance, firmness and diminished
wrinkles. 1 fl. oz. 417-187 reg. \$45

\$26.99



**Anew Vitamin C
Antioxidant Lip Treatment**

Nourishes lips with vitamins C and E.
.13 oz. net wt. 784-547

reg. \$14

\$7.99



**Anew Vitamin C
Glow Body Scrub**

Exfoliates dry, dull skin. A blend of sunflower
seed and almond oils replenishes moisture.
Refreshing citrus scent. 9 oz. net wt.

443-752
reg. \$36

\$19.99

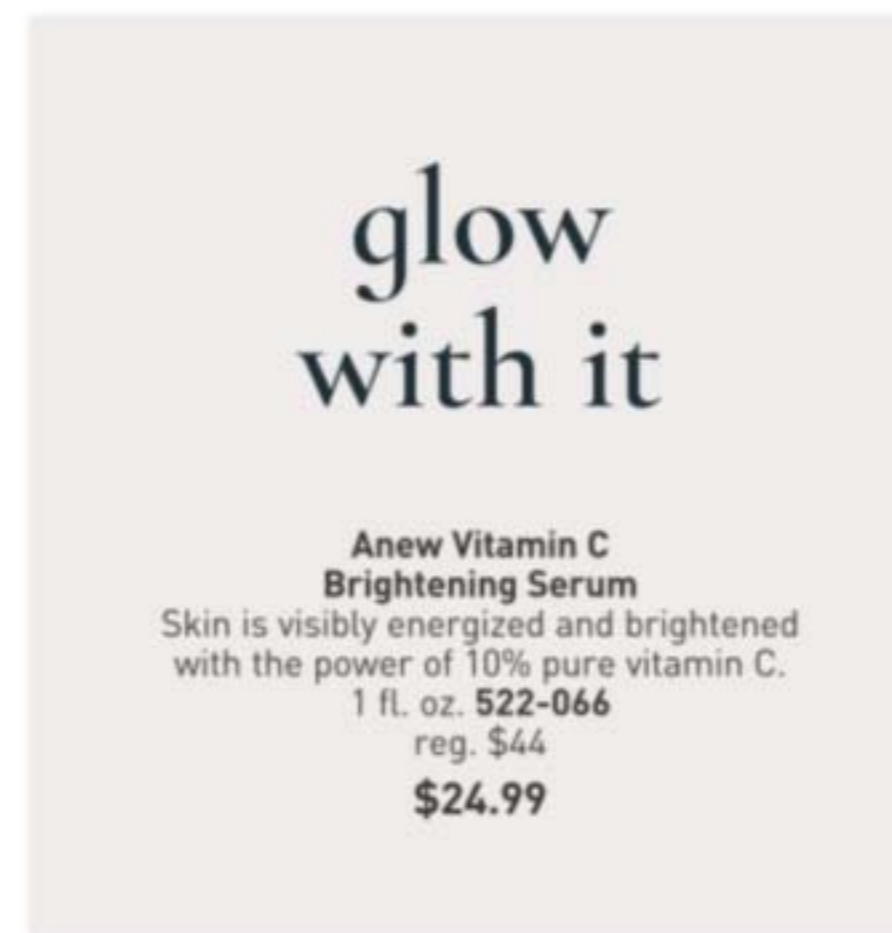


**Anew Vitamin C
Nourishing Body Butter**

With vitamins C and E. With hydrating shea butter
and niacinamide. Fruity-floral and citrus scent.

7.8 fl. oz. 443-767
reg. \$32

\$17.99



glow
with it

**Anew Vitamin C
Brightening Serum**

Skin is visibly energized and brightened
with the power of 10% pure vitamin C.

1 fl. oz. 522-066
reg. \$44

\$24.99





Isa Knox Anew Clinical Line Eraser with Retinol Targeted Treatment
In just one week, the look of deep lines is smoothed and resurfaced. Use PM. .67 fl. oz. **925-159** reg. \$40
\$23.99

Isa Knox Anew Clinical Line Eraser with Retinol Treatment
Great for first-time retinol users. Use AM/PM. 1 oz. net wt. **763-330** reg. \$45
\$27.99



100% showed clinical improvement of fine lines and wrinkles in one week, with increased results over time.

Isa Knox Anew Clinical Line Eraser with Retinol [1.0%] Advanced Retinol Serum
Our highest dose of retinol. Dramatically reduces the appearance of fine lines, wrinkles and dark spots. 1 fl. oz. **390-751** reg. \$50
\$39.99



Isa Knox Anew Clinical Revitalize & Reveal Intensive Peel
Intensive resurfacing peel similar to pro acid peels. With AHA and PHA. 1 fl. oz. **780-025** reg. \$45
\$27.99



Isa Knox Anew Clinical Revitalize & Reveal Resurfacing Expert Smoothing Fluid
79% as effective as a pro micro-dermabrasion without the same irritation. 1 fl. oz. **852-282** reg. \$44
\$27.99



Isa Knox Anew Clinical Collagen Booster Eye Lift Pro Dual Eye System
In just 7 days, eye area looks lifted, firmer, tighter. With a peptide complex to help boost skin renewal. Gel, .33 fl. oz. Cream, .33 fl. oz. **961-406** reg. \$40
\$23.99



Isa Knox Anew Clinical Revitalize & Reveal Advanced Wrinkle Corrector
In just two weeks, wrinkles appear reduced. 1.7 fl. oz. **914-576** reg. \$40
\$23.99



Isa Knox Anew Clinical Revitalize & Reveal Resurfacing Lotion for Body
Exfoliates with gentle yet effective AHA lactic acid. Moisturizes with shea butter. 5 fl. oz. **390-785** reg. \$34
\$19.99




Isa Knox Anew Clinical Collagen Booster Rejuvenating Serum Ampoules
Powerful peptide blend boosts skin renewal. 60 capsulated single-use ampoules. .008 fl. oz. each. **803-077** reg. \$62.50
\$49.99



Isa Knox Anew Clinical Collagen Booster Microneedling Polisher
At-home alternative to micro-dermabrasion and micro-needling. Visibly diminishes pores, fine lines and wrinkles. 1.7 fl. oz. **798-592** reg. \$34
\$19.99



Isa Knox Anew Clinical Collagen Booster Firming Cream
With peptides that boost skin renewal to help restore youthful bounce. With moisturizing and skin-plumping niacinamide and squalane. Hygienic, airless pump. 1.7 fl. oz. **069-327** reg. \$45
\$27.99



Isa Knox Anew Clinical Revitalize & Reveal Extra Strength Retexturizing Peel
Results similar to a 35% pro glycolic peel.* 30 fragrance-free pads. 2" diam. **632-774** reg. \$40
\$23.99

*In 6 out of 8 attributes tested over a 7-week period.



belif
**The True Cream -
 Moisturizing Bomb**
 For dryness, loss
 of elasticity and
 firmness. 26 hours
 of long-lasting
 moisture.*
 1.68 fl. oz.
948-463
 reg. \$42
\$38



belif
**The True Cream -
 Aqua Bomb**
 For dryness, dullness
 and uneven texture.
 70% increase in
 hydration levels.*
 1.68 fl. oz.
235-709
 reg. \$42
\$38



**Rice Water Bright
 Rice Bran Gentle
 Exfoliating Cleanser**
 Daily scrub with
 organic rice bran
 powder, rice bran oil
 and hydrated silica.
 10.1 fl. oz.
376-865
 reg. \$15.99
\$12.99



**Rice Water Bright
 Foaming Cleanser**
 Light whipped foam. With
 rice water and soapwort
 extract. Skin looks clear
 and bright. 10.1 fl. oz.
508-093
 reg. \$13
\$11



**Anew Hydra Fusion
 1.5% Hyaluronic Acid
 Serum**
 With three different
 molecular sizes of HA
 that reach multiple
 layers of skin's surface
 to visibly plump skin.
 1 fl. oz. **290-390**
 reg. \$44
\$24.99



**Solutions
 Dramatic Firming
 Cream**
 Skin looks and
 feels smoother.
 1.7 fl. oz.
374-657
 reg. \$14
\$9.99



**Solutions
 Nurtura
 Replenishing
 Cream**
 Adds moisture to
 dry skin. 1.7 fl. oz.
908-263 reg. \$14
\$9.99



**Smaller Size!
 Rice Water Bright
 Foaming Cleanser**
 Light whipped foam. With
 rice water and soapwort
 extract. Convenient size
 for your medicine cabinet.
 5 fl. oz. **478-479**
 reg. \$8
\$6.49



**Anew Hydra Fusion
 De-Puffing Eye Serum**
 Eyes look and feel
 refreshed. With caffeine
 and hyaluronic acid.
 Cooling ceramic tip.
 Instantly boosts hydration
 around eye area by 3X.
 .5 fl. oz. **137-737**
 reg. \$34
\$18.99



**Solutions
 Banishing Cream
 Skin Discoloration
 Improver**
 Visibly improves
 skin tone.
 2.5 fl. oz.
267-115
 reg. \$14
\$9.99



**Solutions
 Anti-Aging Cream**
 Moisturizing
 formula works to
 visibly smooth the
 appearance of fine
 lines and wrinkles.
 1.7 fl. oz. **949-460**
 reg. \$14
\$9.99



**Rice Water Bright
 Cleansing
 Facial Wipes**
 Great on the go.
 With rice extract to
 moisturize while
 cleansing. Removes
 eye makeup.
 50 sheets. **508-108**
 reg. \$11
\$9



**Farm Rx
 Bakuchiol Eye Cream**
 With bakuchiol, a
 natural alternative to
 retinol. Visibly reduces
 dark circles, fine lines
 and wrinkles without
 irritating the delicate
 eye area. 1 fl. oz.
565-834 reg. \$37
\$27.99

CLEANSE AND TREAT #1 SET

Isa Knox Anew Clinical Revitalize & Reveal
Advanced Wrinkle Corrector
1.7 fl. oz.

Isa Knox Anew Clinical Revitalize & Reveal
Extra Strength Retexturizing Peel
30 pads.

Rice Water Bright
Mild Cleansing Water
16.9 fl. oz.

3-PIECE SET
\$39.99
OVER \$94 VALUE
177-975



GOTTA GLOW SET

Anew Vitamin C Glow Body Scrub
9 oz. net wt.

Anew Vitamin C Nourishing Body Butter
7.8 fl. oz.

Isa Knox Anew Clinical Revitalize & Reveal
Resurfacing Lotion for Body
5 fl. oz.

3-PIECE SET
\$40.99
\$102 VALUE
178-106



FACE AND EYES SET

Anew Ultimate Supreme
Advanced Performance Crème
1.7 oz. net wt.

Isa Knox Anew Clinical
Collagen Booster
Eye Lift Pro
Dual Eye System
Gel, .33 fl. oz.
Cream, .33 fl. oz.

Rice Water Bright
Foaming Cleanser
10.1 fl. oz.

3-PIECE SET
\$42.99
\$113 VALUE
178-000



CLEANSE AND TREAT #2 SET

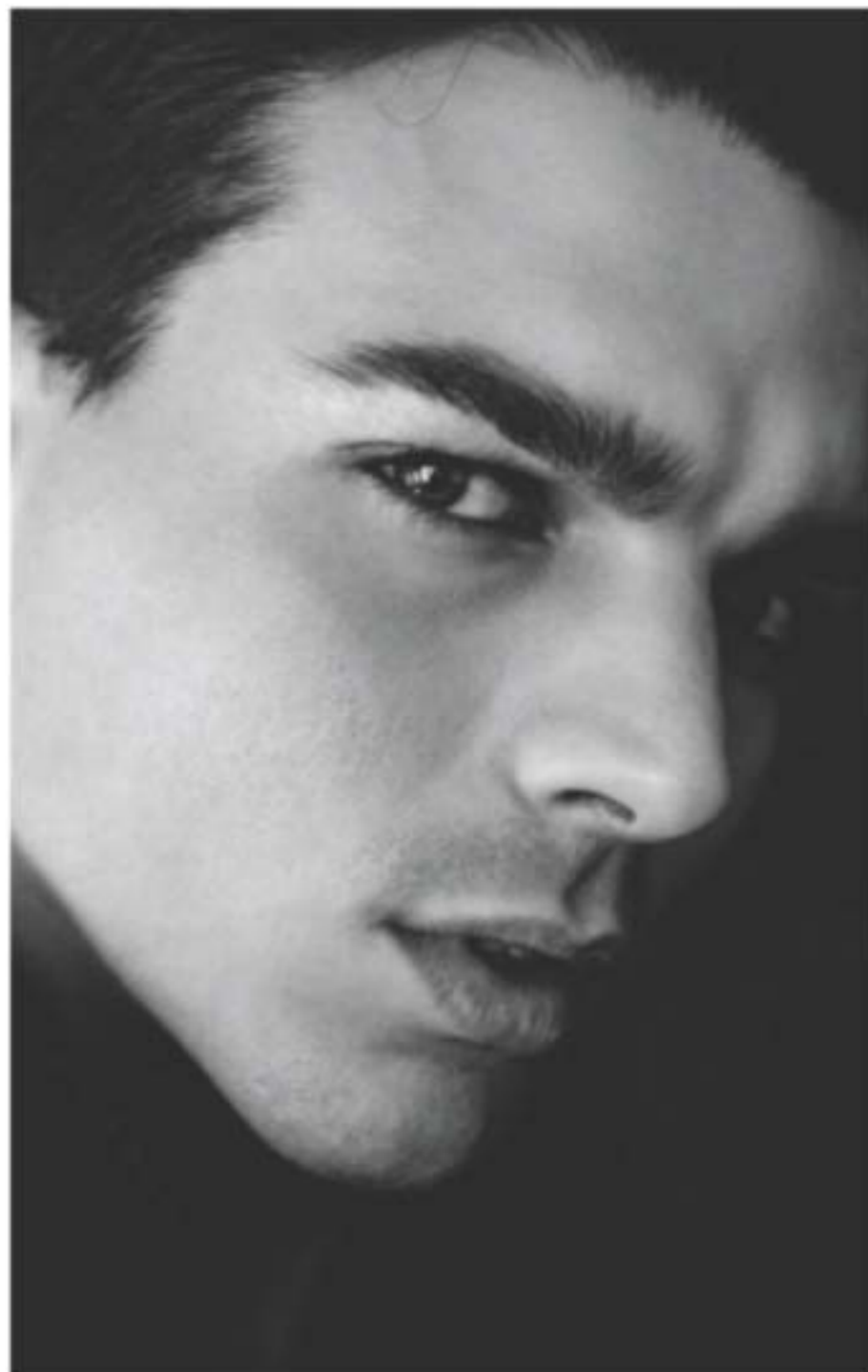
Isa Knox Anew Clinical
Revitalize & Reveal
Resurfacing Expert Smoothing Fluid
1 fl. oz.

Isa Knox Anew Clinical Line Eraser
with Retinol Treatment
1 oz. net wt.

Isa Knox LXNEW Clean
Nourishing Cream Cleanser
5 fl. oz.

3-PIECE SET
\$44.99
\$101 VALUE
178-034





always captivating

fresh aromatic
Mesmerize Cologne
Bergamot, cardamom and amber.
3.4 fl. oz. **871-458** reg. \$25
\$18.99



free

Mesmerize Cologne
with any \$30 fragrance
purchase, pages 28-37
and 74-79.
\$25 value.
Limited quantities.



woody fougère
Mesmerize Black
Eau de Toilette
Pepper, nutmeg and tonka bean.
3.4 fl. oz. **305-667** reg. \$25
\$18.99



fresh aromatic
Avon Exploration Eau de Toilette
 Orange, silver sage and vetiver. 2.5 fl. oz.
 593-666 reg. \$25
\$18.99



fresh aromatic
Perceive Cologne
 Citrus, sage and cedarwood.
 3.4 fl. oz. 194-550 reg. \$25
\$18.99

effortlessly
 cool

fresh aromatic
Black Suede Eau de Toilette
 Bergamot, leather and oakmoss.
 3.4 fl. oz. 908-703
 reg. \$22
\$14.99



fresh aromatic
Wild Country Cologne
 Lavender, coriander seed and
 sandalwood. 3 fl. oz. 086-466
 reg. \$22
\$14.99



**Wild Country
 Aftershave Splash**
 4 fl. oz. 366-432
 reg. \$13
\$10.49

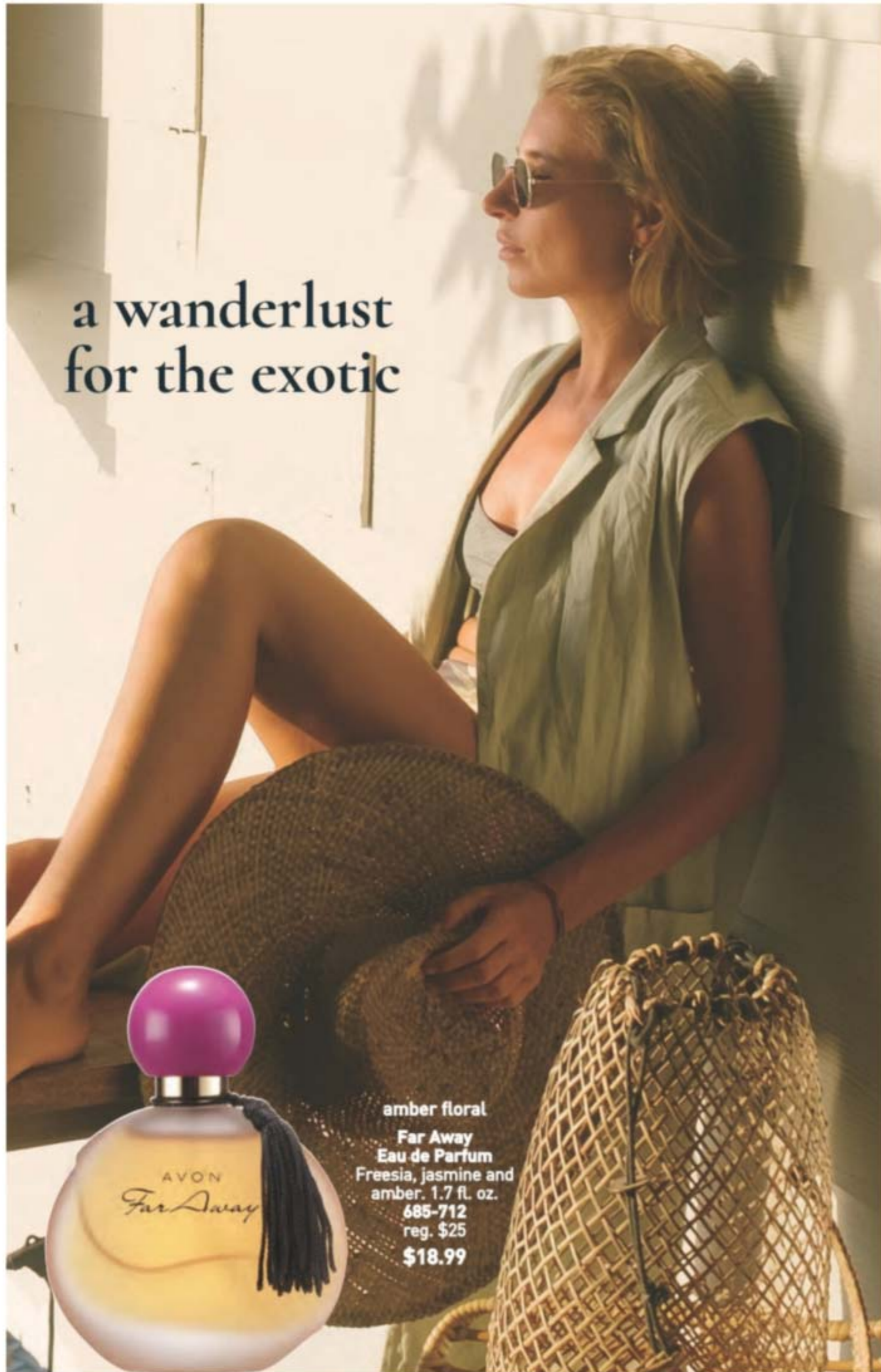


**Wild Country
 Hair & Body Wash**
 5 fl. oz. 215-188
 reg. \$8
\$3.99

**Black Suede
 Hair & Body Wash**
 5 fl. oz. 230-200
 reg. \$8
\$3.99



a wanderlust
for the exotic



amber floral
Far Away
Eau de Parfum
Freesia, jasmine and
amber. 1.7 fl. oz.
685-712
reg. \$25
\$18.99



amber floral
Far Away Gold
Eau de Parfum
Ylang-ylang, jasmine
and vanilla.
1.7 fl. oz. 685-727
reg. \$25
\$18.99



fruity floral
Far Away Infinity
Eau de Parfum
Bergamot, jasmine sambac
and sandalwood.
1.7 fl. oz. 318-481
reg. \$25
\$18.99



fruity floral
Far Away Bali
Eau de Parfum
Grapefruit, salted
tuberose and amber.
1.7 fl. oz. 451-389
reg. \$25
\$18.99



fresh green
floral

Haiku Reflection
Eau de Parfum
Water accord,
acacia blossom
and amber wood.
1.7 fl. oz. 617-657

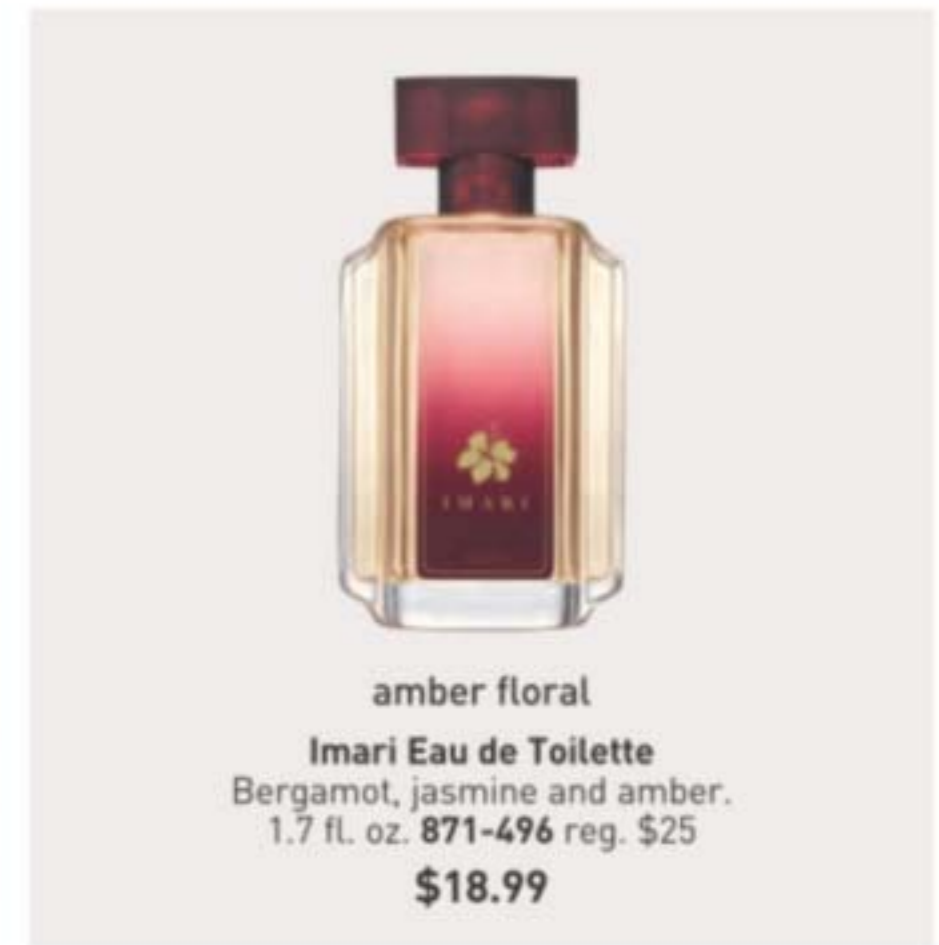
Haiku
Eau de Parfum
Yuzu, muguet and
blonde woods.
1.7 fl. oz. 601-030

Haiku Kyoto Flower
Eau de Parfum
Violet leaf, white peony
and cotton musk.
1.7 fl. oz. 144-352
reg. \$25
\$18.99 each



fruity floral
Rare Amethyst
 Eau de Parfum
 Plum, violet and
 sandalwood.
 1.7 fl. oz.
 933-062
 reg. \$25
\$18.99

shimmer with glamour



amber floral
Imari Eau de Toilette
 Bergamot, jasmine and amber.
 1.7 fl. oz. 871-496 reg. \$25
\$18.99



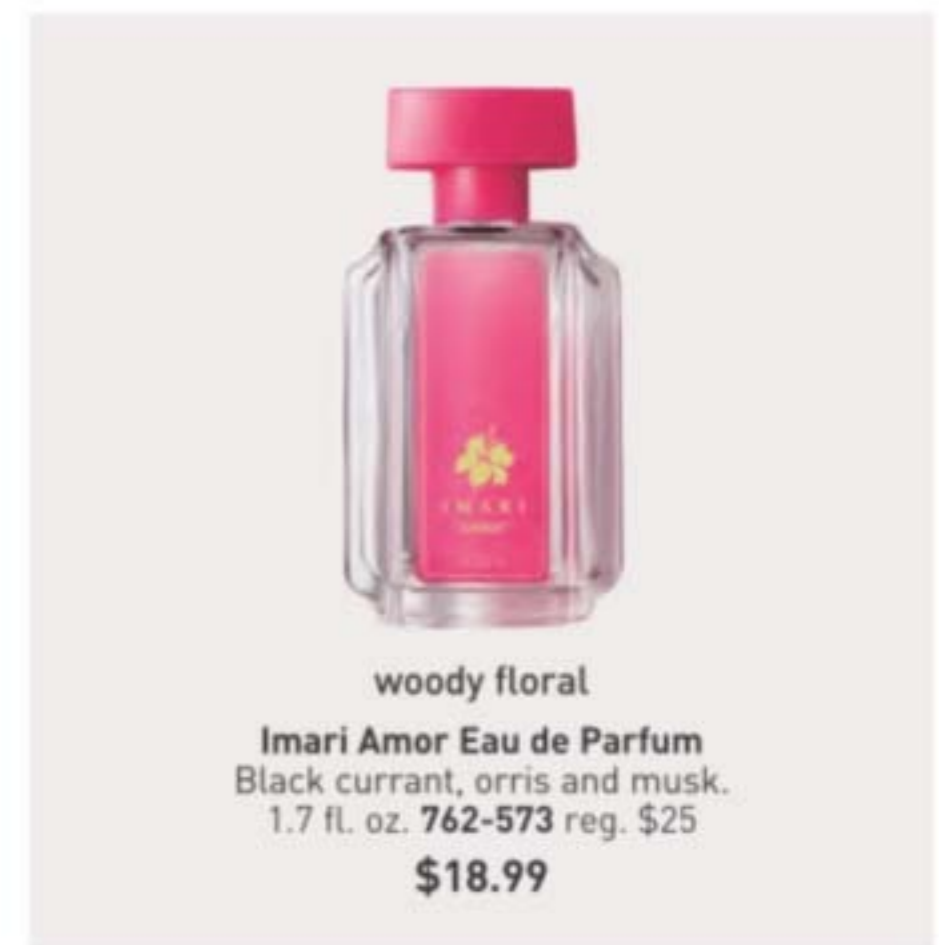
soft floral
Rare Pearls Eau de Parfum
 Magnolia, white pepper and rosewood.
 1.7 fl. oz. 761-615 reg. \$25
\$18.99



amber floral
Imari Seduction Eau de Toilette
 Wild berries, purple orchid and patchouli.
 1.7 fl. oz. 452-897 reg. \$25
\$18.99



amber floral
Rare Gold Eau de Parfum
 Mandarin zest, ylang-ylang and amber.
 1.7 fl. oz. 933-115 reg. \$25
\$18.99



woody floral
Imari Amor Eau de Parfum
 Black currant, orris and musk.
 1.7 fl. oz. 762-573 reg. \$25
\$18.99



amber floral
Candid Cologne
 Bergamot, tuberose
 and patchouli.
 1.7 fl. oz.
 038-295
 reg. \$18
\$12.99



soft floral
Dreamlife Cologne
 Mimosa flower,
 rose and amber.
 1.7 fl. oz.
 236-227
 reg. \$18
\$12.99



woody floral
Night Magic Cologne
 Neroli, jasmine
 and musk.
 1.7 fl. oz.
 168-682
 reg. \$18
\$12.99



soft floral
Odyssey Cologne
 Tuberose,
 ylang-ylang and
 oakmoss. 1.7 fl. oz.
 168-697
 reg. \$18
\$12.99



soft floral
**Sweet Honesty
 Cologne**
 Lily of the valley, rose
 and cedarwood.
 1.7 fl. oz.
 037-595
 reg. \$18
\$12.99



soft floral
Timeless Cologne
 Cardamom,
 jasmine and
 patchouli.
 1.7 fl. oz.
 037-930
 reg. \$18
\$12.99



soft floral
Topaze Cologne
 Jasmine, rose and
 sheer musk.
 1.7 fl. oz.
 735-217
 reg. \$18
\$12.99



fresh green floral
Free O₂ Eau de Toilette
 White peach tea,
 honeysuckle and musk.
 1.7 fl. oz.
 265-658
 reg. \$18
\$12.99



**scented
 softness**

**Perfumed
 Skin Softener**
 Moisturizing formula leaves
 skin soft and scented.
 Each, 5 fl. oz.
 reg. \$8
\$3.99 each



Candid 103-926



Night Magic Evening Musk 862-112



Odyssey 862-108



Sweet Honesty 104-463



Timeless 104-478



Far Away 812-981



Haiku 813-973



Imari 818-239

HAIKU HAND & BODY SET

fresh green floral

Eau de Parfum
Yuzu, muguet and blonde woods.
1.7 fl. oz.

Body Lotion
6.7 fl. oz.

Hand Cream
2.5 fl. oz.

3-PIECE SET

\$20.99

\$42 VALUE

759-221



BLACK SUEDE HAIR & BODY SET

fresh aromatic

Eau de Toilette
Bergamot, leather and oakmoss.
3.4 fl. oz.

Hair & Body Wash
5 fl. oz.

Bar Soap
3.17 oz. net wt.

3-PIECE SET

\$15.99

\$36 VALUE

325-843



RARE PEARLS HAIR & BODY SET

soft floral

Eau de Parfum
Magnolia, white pepper and rosewood. 1.7 fl. oz.

Body Lotion
6.7 fl. oz.

Hair and Body Mist
3.25 fl. oz.

3-PIECE SET

\$25.99

\$51 VALUE

766-712



WILD COUNTRY HAIR & BODY SET

fresh aromatic

Cologne
Lavender, coriander seed and sandalwood.
3 fl. oz.

Hair & Body Wash
5 fl. oz.

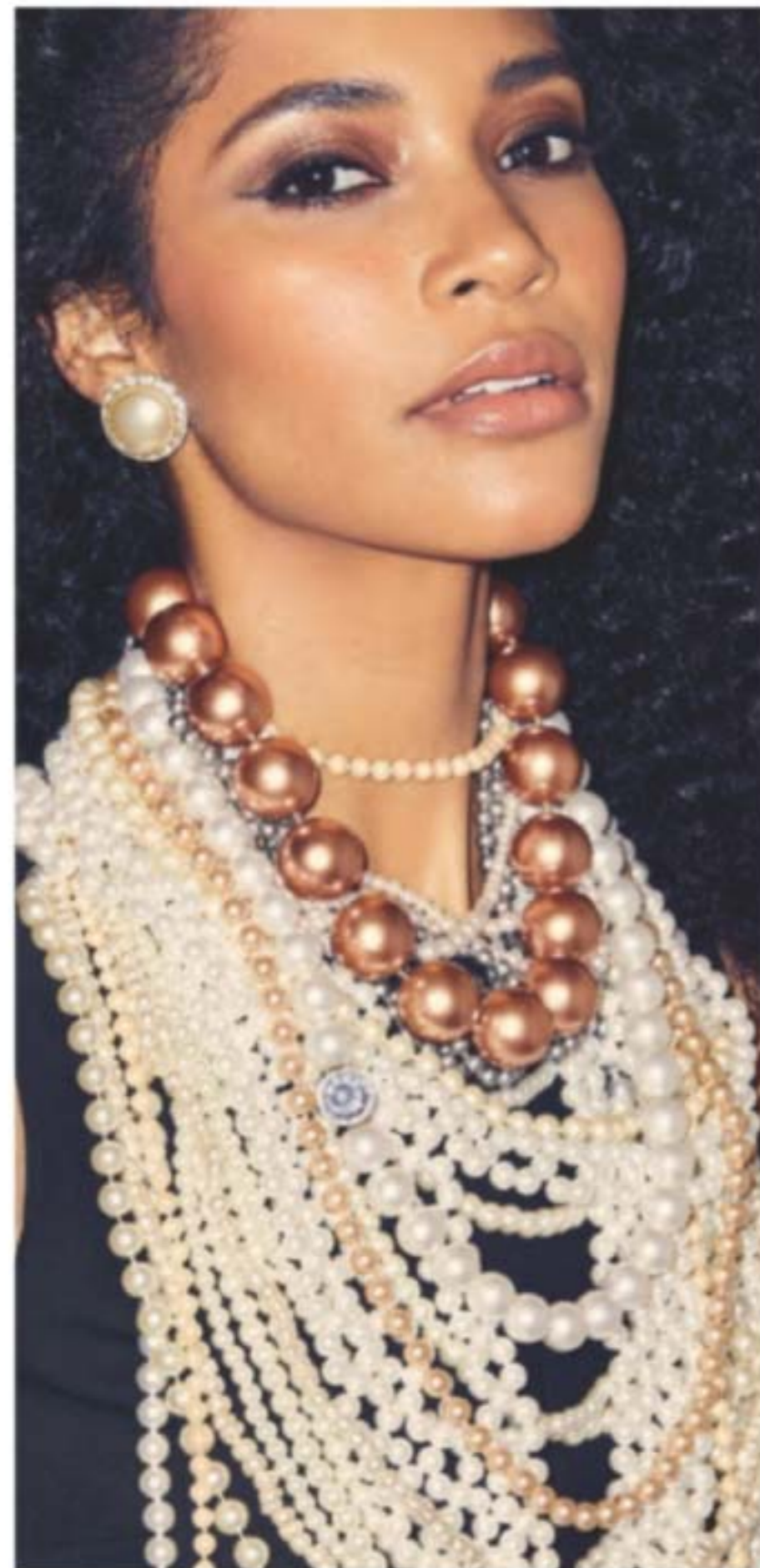
Bar Soap
3.17 oz. net wt.

3-PIECE SET

\$15.99

\$36 VALUE

734-058



free

SKIN SO SOFT SOFT & SENSUAL BATH OIL
WITH ANY \$30 PURCHASE,
PAGES 41-51 AND 88-99.
\$24 VALUE. LIMITED QUANTITIES.
Sold separately on page 43.



good for your skin.
good for the earth.

NEW

SKIN SO SOFT PURE NATURE

Revitalizing Shower Gel
96% naturally derived.
Richly lathering gel.
12 fl. oz. **415-170** reg. \$20
\$15.99

**Revitalizing In-Shower
Body Lotion**
95% naturally derived.
Hydrating and softening
lotion. Apply onto wet skin
after shower or bath.
8 fl. oz. **633-857** reg. \$21
\$16.49

**Revitalizing
Body Cream**
94% naturally derived.
Smooth on moisturizing
cream after bath or
shower. 12 fl. oz. **629-767**
reg. \$21
\$16.49

Sustainable
packaging*

Eucalyptus
mint scent



GINGER
to help skin look
smoother and more
even-toned



OLIVE OIL
to help moisturize
without clogging
pores

GREEN TEA
to help enhance
skin's glow

A clean, vegan,
plant-based,
cruelty-free bath and body
collection with **naturally
derived ingredients.**

Formulated without
parabens, phthalates or
synthetic fragrances
and dyes, and
no animal testing.

Pump sold separately.

Original
With jojoba oil.
Fresh herbal scent.

Original Gelled Body Oil
Dries to a silky finish.
6.76 fl. oz. **939-500** reg. \$13
\$8.69

Original Bath Oil Spray
Locks in hydration.
Pump sold separately.
5 fl. oz. **967-571** reg. \$14
\$9.29

Original Bonus-Size Bath Oil
Hydrates during or after bath or shower.
25 fl. oz. **037-690** reg. \$30
\$21.69

Original Body Lotion
48-hour moisture.
11.8 fl. oz.
761-634
reg. \$11
\$7.69

Soft & Sensual Body Lotion
48-hour moisture.
11.8 fl. oz.
934-312
reg. \$11
\$7.69

Original Bath Oil
Hydrates during or after bath or shower.
16.9 fl. oz.
439-040
reg. \$24
\$16.99

Soft & Sensual Bath Oil
Hydrates during or after bath or shower.
16.9 fl. oz.
504-614
reg. \$24
\$16.99

Soft & Sensual
With argan oil.
Spicy floral scent.

Soft & Sensual Bonus-Size Bath Oil
Hydrates during or after bath or shower.
25 fl. oz. **862-920**
reg. \$30
\$21.69

Soft & Sensual Gelled Body Oil
Dries to a silky finish.
6.76 fl. oz. **908-244**
reg. \$13
\$8.69

Sold separately:
Original Bath Oil Spray Pump
101-320
\$3

Original Bonus-Size Shower Gel
Gently cleanses and hydrates.
33.8 fl. oz.
433-444
reg. \$18
\$13.99

Bonus-Size Body Lotion
48-hour moisture.
33.8 fl. oz.
336-043
reg. \$23
\$18.99
Pump sold separately (page 43).

Soft & Sensual Bonus-Size Shower Gel
Gently cleanses and hydrates.
33.8 fl. oz.
018-142
reg. \$18
\$13.99

Soft & Sensual Bonus-Size Body Lotion
48-hour moisture.
33.8 fl. oz.
336-062
reg. \$23
\$18.99
Pump sold separately.

Sold separately:
Bonus-Size Skin So Soft and Moisture Therapy Body Lotion Pump
101-149
\$3



Radiant Moisture Bonus-Size Bath Oil
Hydrates during or after bath or shower. 25 fl. oz. **249-788** reg. \$30
\$21.69

Radiant Moisture Bonus-Size Shower Gel
Gently cleanses and hydrates. 33.8 fl. oz. **433-922** reg. \$18
\$13.99

Moisture Therapy Bonus-Size Body Lotions
Each, 33.8 fl. oz. reg. \$18
\$14.99 each
Pump sold separately (page 44).

Intensive Healing & Repair
72-hour moisture for extra-dry skin. Fragrance-free. **325-547**

Daily Skin Defense
Helps restore moisture to everyday dry skin. **603-028**

Calming Relief
Soothes and relieves dry, itchy skin. Fragrance-free. **761-620**

Sold separately:
Bonus-Size Skin So Soft and Moisture Therapy Body Lotion Pump
101-149
\$3

Pumps not included..

Radiant Moisture Bonus-Size Body Lotion
48 hours of moisture. 33.8 fl. oz. **337-346** reg. \$23
\$18.99
Pump sold separately.

Supreme Nourishment Bonus-Size Body Lotion
48 hours of moisture. 33.8 fl. oz. **337-475** reg. \$23
\$18.99
Pump sold separately.

Sold separately:
Bonus-Size Skin So Soft and Moisture Therapy Body Lotion Pump
101-149
\$3

Moisture Therapy Intensive Healing & Repair Extra Strength Cream
24-hour moisturization. Fragrance-free. 5.3 oz. net wt. **772-972** reg. \$8
\$5.39

Moisture Therapy Balance + Soothe Body Wash
Softens as it gently cleanses. 13.2 fl. oz. **438-078** reg. \$23
\$18

Moisture Therapy Balance + Soothe Body Lotion
Skin looks softer and healthier. 13.2 fl. oz. **438-082** reg. \$25
\$20



Senses Cozy Vanilla & Coconut Body Scrub
With shea butter.
9 oz. net wt. **530-314**
reg. \$22
\$17.99



Senses Cozy Vanilla & Coconut Shower Gel
Moisturizing cleanser. 10 fl. oz. **200-227**
reg. \$17
\$13.99



Senses Cozy Vanilla & Coconut Body Lotion
With shea butter and vitamin E. 8 fl. oz. **035-152**
reg. \$17
\$13.99



Senses Cozy Vanilla & Coconut Hand Soap
With moisturizing glycerin. 10.1 fl. oz. **178-675**
reg. \$13.99
\$10.99



Senses Cozy Vanilla & Coconut Body Mist
With refreshing aloe vera extract. 8 fl. oz. **034-888**
reg. \$18
\$14.99



Senses Cozy Vanilla & Coconut Hand Cream
With shea butter and antioxidants. 2.5 fl. oz. **015-029**
reg. \$6
\$4.99



Senses Sparkling Grapefruit & Orange Blossom
Energize with a juicy mix of zesty grapefruit, bright orange blossom and delicate honeysuckle.

Shower Gel
Moisturizing cleanser derived from coconut. 10 fl. oz. **367-204**
reg. \$17
\$13.99

Body Lotion
With shea butter and vitamin E. 8 fl. oz. **367-219**
reg. \$17
\$13.99

Body Mist
With refreshing aloe vera extract. 8 fl. oz. **034-687**
reg. \$18
\$14.99

Hand Soap
With moisturizing glycerin. 10.1 fl. oz. **415-127**
reg. \$13.99
\$10.99

Hand Cream
With shea butter and antioxidants. 2.5 fl. oz. **852-120**
reg. \$6
\$4.99



Cherry Blossom
425-033



Sensitive Skin
213-151



Vanilla Cream
214-220



Soft Pink
425-052



Cucumber Melon
688-950



Orange & Honeysuckle
633-952



Endless Ocean
425-048



Lily & Honeysuckle Blossom
423-394



Lavender Garden
424-735

**soak
away
stress**

Senses Bubble Bath
Each, 24 fl. oz. reg. \$11
\$8.99 each

bee goodness for hair

With revitalizing honey, royal jelly and propolis (tree sap plus beeswax).



Elastine PropoliThera

Volumizing

Enhances texture. Hair looks fuller, thicker, stronger. Each, 16.9 fl. oz.

A. Shampoo 892-607

B. Conditioner 892-870

Damage Repair

Helps hair appear smooth and manageable. Each, 16.9 fl. oz.

C. Shampoo 053-082

D. Conditioner 638-681

E. Hair Oil Serum

Helps to strengthen, protect, moisturize and smooth hair, and to add shine.

5.7 fl. oz. **895-190**

F. Hair Mask

Enriched with nutrients to help deeply nourish hair and mend damaged split ends.

10.1 fl. oz. **150-301**

reg. \$18 each

\$15.99 each



Root Touch-Up
Instantly covers up roots and bare spots. With black bean and ginseng. Built-in mirror. Each, .25 oz. net wt. reg. \$18

\$15.99 each



Advance Techniques 360 Nourish with Moroccan Argan Oil Leave-In Treatment
Moisturizes dry, damaged hair. With vitamins B and E. 2 fl. oz. **511-411** reg. \$16

\$11.69



Elastine PropoliThera Leave-In Conditioner
Nourishes dry hair. With royal jelly. 8.1 fl. oz. **102-570** reg. \$19

\$15



Advance Techniques Daily Shine Dry Ends Serum

Helps mend and nourish split ends instantly. With pro-vitamin B5. 2 fl. oz. **883-190** reg. \$11

\$7.99



Advance Techniques Daily Shine 2-in-1 Shampoo & Conditioner

Leaves hair feeling clean, conditioned and frizz-free. With pro-vitamin B5. 11.8 fl. oz. **358-218** reg. \$11

\$8.99

**Skin So Soft Original
Replenishing Hand Cream**
3.4 fl. oz. 941-268
reg. \$5

**Skin So Soft Radiant Moisture
Replenishing Hand Cream**
3.4 fl. oz. 892-650
reg. \$5

**Skin So Soft Soft & Sensual
Replenishing Hand Cream**
3.4 fl. oz. 867-315
reg. \$5

**Moisture Therapy
Intensive Healing & Repair
Hand Cream**
4.2 fl. oz. 482-937
reg. \$6

**Avon Care Silicone Glove
Protective Hand Cream**
3.4 fl. oz. 366-887
reg. \$6
\$2.69 each



**24-hour
odor
protection**

**Roll-On
Anti-Perspirant
Deodorant**
Each, 2.6 fl. oz.
reg. \$3.60
\$2.69 each



**Senses Shower Gel
Blushing Cherry Blossom**
5 fl. oz. 423-299
reg. \$6
\$3.69



**Senses Shower Gel
Juicy Pomegranate
& Mango**
5 fl. oz. 462-139 reg. \$6
\$3.69



**Senses Shower Gel
Fresh Cucumber & Melon**
5 fl. oz. 462-071
reg. \$6
\$3.69



**Senses Shower Gel
Silky Vanilla**
5 fl. oz. 462-105
reg. \$6
\$3.69



**Original
Shower Gel**
5 fl. oz. 914-580
reg. \$8
\$5.19



**Soft & Sensual
Shower Gel**
5 fl. oz. 435-600
reg. \$8
\$5.19



**Radiant Moisture
Shower Gel**
5 fl. oz. 410-914
reg. \$8
\$5.19



**Skin So Soft
Supreme Nourishment
Tropical Coconut Lip Balm**
.14 oz. net wt.
958-370 reg. \$2
\$1.39



**Moisture Therapy
Intensive Healing & Repair
Moisturizing
Lip Treatment Balm**
.14 oz. net wt. 285-117 reg. \$2
99¢



Perfumed Liquid Deodorant
Aluminum-free. Fast-drying.
Easy fingertip application.
Soft floral scent. 2 fl. oz.
687-681 reg. \$6
\$4.50



CHI® Essentials Revive Keratin + Bonding Restoring Shampoo & Restoring Conditioner
Each, 12 fl. oz.
\$50 total value
Both for \$27.99
938-887



Elastine Salon de Color Color Vibe Purple Shampoo & Purple Conditioner
Each, 8.4 fl. oz.
\$34 total value
Both for \$19.99
946-900



Elastine HempharmX Hydrating Shampoo & Hydrating Conditioner
Each, 12 fl. oz.
\$48 total value
Both for \$27.99
672-572



Dr. Groot Scalp Fortifying Hair-Thickening Shampoo
13.5 fl. oz.
Premium Scalp Cleansing Brush
\$54 total value
Both for \$33.99
672-740



SKIN SO SOFT ORIGINAL SET

Original Beauty Bar Soap
3.17 oz. net wt.

Original Gelled Body Oil
6.76 fl. oz.

Original Bonus-Size Bath Oil
25 fl. oz.

3-PIECE SET
\$23.99
OVER \$47 VALUE
674-025



SKIN SO SOFT RADIANT MOISTURE SET

Radiant Moisture Shower Gel
5 fl. oz.

Radiant Moisture Replenishing Hand Cream
3.4 fl. oz.

Radiant Moisture Bonus-Size Bath Oil
25 fl. oz.

3-PIECE SET
\$20.99
\$43 VALUE
673-052



make a statement

Imbue your style (and your spirit) with bold blue hues and heartfelt sentiments.



necklace and earring set

set of 3

NEW

Blue Luster Collection

Blue glass faceted beads, pearlesque beads and goldtone beaded accents set in goldtone.

Necklace and Earring Set

Four-row necklace: longest, 18" L with 3/2" extender; shortest, 7" L. Pierced hoops, 1 1/4" L. **095-357** reg. \$29.99

\$22.99 the set

Stretch Bracelet Set

Includes 3 separate bracelets. Stretches to fit most. **095-361** reg. \$16.99

\$12.99 the set



Faith/
SILVERTONE with
Abalone Shell
095-376

Love/
Goldtone with
Mother-of-Pearl
095-380

Faith/
SILVERTONE
095-400

Love/
Goldtone
095-395

NEW

Meaningful Collection

Pendant Necklace

16 1/2" L with 3/2" extender. reg. \$22.99

\$16.99 each

Beaded Stretch Bracelet

With blue or pink faceted glass beads and hanging charms. Stretches to fit most. reg. \$16.99

\$12.99 each

golden glamour

Lace-like detailing and luxe layers take center stage.



necklace and earring set



NEW

Rhinestone Lace Collection
Goldtone with clear stone accents.

Choker and Earring Set
Choker necklace, 14½" L with 3½" extender. Pierced drops, approx. 1" L.
095-414
reg. \$24.99

\$19.99 the set

Cuff Bracelet
Stretches to fit most.
095-433
reg. \$19.99

\$14.99



set of 4

set of 3

Pearly Goldtone Collection
Goldtone with pearlesque accents.

Necklace Set
Includes 4 separate necklaces (the third shown from top down is a double-row): longest, 24" L with 3½" extender; shortest, 16½" L with 3½" extender. 287-435
reg. \$24.99

\$19.99 the set

Bracelet Set
Includes 3 separate bracelets: pearly bracelet stretches to fit most; 2 chain bracelets, each, 7½" L with 1" extender. 287-469
reg. \$16.99

\$12.99 the set

Earring Pack
6-pair pack. Drops, 1½" L; hoops, approx. 1" L. Pierced. 287-473
reg. \$19.99

\$14.99 the pack

six-pair set



shades of spring

Pretty pastels and deep blues pair perfectly with whites and denim.



Pastel Flower Collection
Multicolor pastels set in goldtone.

Necklace
With freshwater pearls.
16½" L with 3½" extender.
Lobster closure.
287-420
reg. \$19.99
\$14.99

Earrings
Hoops, 1½" L. Pierced.
Turquoise-colored 287-048
White 286-879
Pink 286-898
reg. \$16.99
\$12.99 each pair



Denim Blue Collection
Mother-of-pearl beads, blue glass beads and silvertone accents set in silvertone.

Long Necklace
Two-layer necklace. 30" L with
3½" extender. Lobster closure.
271-956
reg. \$22.99
\$16.99

Earrings
Raffia fringe hoops, 2" L.
Pierced.
286-864
reg. \$16.99
\$12.99

Bracelet Set
Five-row set.
Stretches to fit most.
272-068
reg. \$19.99
\$14.99 the set

set of five

STUDIO
1886

spring refresh

Breeze into the season with light and airy looks, plus pops of patterns and prints that channel the art of effortless dressing.



ROUND NECKLINE for a flattering fit

STRIPED MESH PUFF SLEEVES add a fun and fresh contrasting detail

NEW

◆ Novelty Mesh Sleeve Top

Blue top with round neckline and striped mesh puff sleeves. Body: polyester/spandex. Contrast mesh sleeves: 100% polyester. Center back length: 22½" on M; 25" on 1X. Machine wash, line dry. Imported.

XS(0-2) 093-976 M(8-10) 094-054 XL(16) 094-126 2X(22W-24W) 094-145
S(4-6) 094-035 L(12-14) 094-069 1X(18W-20W) 094-130 3X(26W-28W) 094-236

reg. \$39.99
\$29.99



NEW

◆ Striped Button-Detail Dress

Navy-and-white-striped dress with V neckline with three-button detail, short puff sleeves with elastic cuff, empire waist and zipper closure on back. Lined. Polyester/spandex with 100% polyester lining. Center back length: 42" on M; 44" on 1X. Machine wash, line dry. Imported.

XS(0-2) 094-255
S(4-6) 094-260
M(8-10) 094-289
L(12-14) 094-308
XL(16) 094-312
1X(18W-20W) 094-327
2X(22W-24W) 094-350
3X(26W-28W) 094-370
reg. \$49.99

\$39.99



NEW

◆ Grommet Slip-On Sneaker

Navy slip-on sneaker with elastic gore and grommet detail on upper. Man-made materials. Imported.

6 094-456 9 094-619
7 094-480 10 094-638
8 094-551 11 094-695
reg. \$32.99

\$24.99



crisp classic

❖ Lightweight Woven Shirt

White-and-blue-pinstripe oversized shirt with button placket down full length of front and long sleeves with cuffs. Polyester/cotton. Center back length: 27½" on M; 29" on 1X. Machine wash, line dry. Imported.

- XS(0-2) 240-006
- S(4-6) 240-010
- M(8-10) 240-063
- L(12-14) 240-078
- XL(16) 240-120
- 1X(18W-20W) 240-135
- 2X(22W-24W) 240-154
- 3X(26W-28W) 251-469

reg. \$46.99
\$36.99



OVERSIZED FIT
with the polished look of pinstripes

gleam team

2-PACK



SEQUIN POCKET
and sleeves for a fun hint of glint

APPAREL SIZE CHART			
SIZE	BUST	WAIST	HIP
XS 0/2	30.5"-32"	23.5"-25"	32.5"-34"
S 4/6	33.5"-35"	26.5"-28"	35.5"-37"
M 8/10	36.5"-38"	29.5"-31"	38.5"-40"
L 12/14	39.5"-41"	32.5"-34"	41.5"-43"
XL 16	43"-44"	35.5"-36.5"	44.5"-45.5"
1X 18W/20W	46.5"-48.5"	39"-41"	48"-50"
2X 22W/24W	50.5"-52.5"	43"-45"	52"-54"
3X 26W/28W	54.5"-56.5"	47"-49"	56"-58"

❖ 2-Pack Sequin-Trim Tees

Includes heather grey and light purple tees with V neckline, sequined chest pocket and short sleeves. Rayon/spandex. Center back length: 22½" on M; 24" on 1X. Machine wash, dry flat. Imported.

- XS(0-2) 254-271 L(12-14) 258-626 2X(22W-24W) 259-895
- S(4-6) 258-100 XL(16) 259-861 3X(26W-28W) 259-929
- M(8-10) 258-573 1X(18W-20W) 259-880

reg. \$44.99

\$34.99 the pack

fresh for spring, fab for fall!



CREW NECKLINE and front pocket

4-PACK

SLIGHTLY CURVED HEM for shape and movement

NEW

◆ 4-Pack Modern Tees

Includes green, peach, tan and floral/leaf-print crew-neck tees with chest pocket and slightly curved hem. Cotton/polyester. Center back length: 25" on M; 27" on 1X. Machine wash, dry flat. Imported.

XS(0-2) 094-700 M(8-10) 094-805 XL(16) 094-896 2X(22W-24W) 095-247
 S(4-6) 094-729 L(12-14) 094-824 1X(18W-20W) 094-920 3X(26W-28W) 095-342

reg. \$49.99

\$39.99 the pack

LONG SLEEVES with functional button tab for adjustable length



REMOVABLE tie-waist belt

FULL BUTTON PLACKET down the front

◆ **Belted Shirt Dress**
 Olive dress with collar, two chest pockets with flaps, button placket down full length of front, long sleeves with tab and removable tie-on belt. 100% polyester. Center back length: 39½" on M; 40½" on 1X. Machine wash (remove belt prior to washing), line dry. Imported.
 XS(0-2) 239-871
 S(4-6) 239-886
 M(8-10) 239-890
 L(12-14) 239-905
 XL(16) 239-910
 1X(18W-20W) 239-977
 2X(22W-24W) 239-981
 3X(26W-28W) 239-996
 reg. \$53.99
\$42.99



Shown: White.

❖ Playtex® 18 Hour® Active Lifestyle Wirefree Bra (US4159)*

Back closure. Polyester/nylon/spandex. **White, Light Beige or Nude:** 36-42B; 36-44C,D; 38-46DD; 38-44DDD. **Black:** 36-42B; 36-44C,D; 38-44DD. reg. \$39

\$33.99



Shown: Nude.

❖ Playtex® Perfectly Smooth® Wirefree Bra (US4707)*

Back closure. Nylon/spandex, polyester lining. **White, Nude, Black:** 36-42B; 36-44C,D,DD; 36-42DDD. **Evening Blush:** 36-44C,D,DD. reg. \$46

\$39.99



Shown: Taupe.

❖ Playtex® Front Close® No Poke Dreamwire™ Bra (US4423)*

Front closure. Nylon/spandex/polyester. Sizes: 38-48C,D,DD,DDD [all colors]. reg. \$46

\$39.99



Shown: Sandshell.

❖ Playtex® Ultra Soft No Poke Dreamwire™ Bra (US4833)*

Back closure. Nylon/spandex. Sizes: 38-42B,C,D,DD,DDD; 44C,D,DD,DDD; 46D,DD [all colors]. reg. \$46

\$39.99



Shown: Natural Beige.

❖ Playtex® 18 Hour® Original Comfort Strap® Wirefree Bra [4693]*

Back closure. Natural latex rubber/polyester/nylon/cotton. **White, Natural Beige or Toffee:** 36-48B,C; 34-48D,DD; 38-48DDD. **Zen Blue:** 36-42B; 36-44C,D; 38-46DD,DDD. **Sailor Blue:** 36-44C,D; 38-46DD; 44-46DDD. **Black:** 36-48B; 36-54C; 36-50D, 54D; 38-54DD. reg. \$39

\$33.99



Shown: Light Beige.

❖ Playtex® 18 Hour® Posture Bra [E525]*

Front closure. Nylon/spandex. **White:** 34-48B,C; 36-48D,DD. **Light Beige:** 36-42B; 36-44C,D; 38-46DD. **Black:** 36-42B,C,D; 38-46DD,DDD. reg. \$39

\$33.99



Shown: Brief Taupe.



Shown: Hi-Cut Taupe.

❖ Bali® Beautifully Confident with Leak Protection Liner*

Light leak protection liner in crotch. Body and lace: Polyester/spandex. Crotch lining: Polyester. reg. \$15

\$12.99 each



Brief (DFLLB1)
Sizes: M, L, XL, 2XL [all colors].



Hi-Cut (DFLLH1)
Sizes: M, L, XL, 2XL [all colors].



Playtex® is a registered trademark used under license. *Hand wash, line dry. Imported.



Anew Ultimate Multi-Performance Eye System
 Cream, .5 oz. net wt.
 Elixir, .09 oz. net wt.
 854-433 reg. \$42
\$27.99



Anew Ultimate Multi-Performance Day Cream Broad Spectrum SPF 25
 1.7 oz. net wt.
 763-307 reg. \$42
\$27.99



Anew Ultimate Multi-Performance Night Cream
 1.7 oz. net wt.
 763-311 reg. \$42
\$27.99



Anew Ultimate Night Repair Serum
 1 fl. oz.
 625-355 reg. \$45
\$26.99



Isa Knox Anew Clinical Collagen Booster Eye Lift Pro Dual Eye System
 Gel, .33 fl. oz. Cream, .33 fl. oz.
 961-406 reg. \$40
\$23.99



Isa Knox Anew Clinical Collagen Booster Rejuvenating Serum Ampoules
 60 capsulated single-use ampoules.
 .008 fl. oz. each. 803-077
 reg. \$62.50
\$49.99



Isa Knox Anew Clinical Collagen Booster Firming Cream
 1.7 fl. oz.
 069-327 reg. \$45
\$27.99



Anew Ultimate Supreme Dual Elixir Serum/Oil
 .67 fl. oz. each.
 588-421 reg. \$60
\$38.99



Anew Ultimate Regimen Set
 Three full-size day, night and eye creams; one try-it-size serum.
 923-228 reg. \$128
\$54.99



Anew Ultimate Supreme Advanced Performance Crème
 1.7 oz. net wt.
 014-735 reg. \$60
\$38.99



Anew Ultimate Supreme Eye Balm
 0.1 oz. net wt.
 625-340 reg. \$45
\$26.99



Isa Knox Anew Clinical Collagen Booster Microneedling Polisher
 1.7 fl. oz.
 798-592 reg. \$34
\$19.99



Isa Knox Anew Clinical Revitalize & Reveal Extra Strength Retexturizing Peel
 30 fragrance-free pads. 2" diam.
 632-774 reg. \$40
\$23.99



Isa Knox Anew Clinical Revitalize & Reveal Advanced Wrinkle Corrector
 1.7 fl. oz.
 914-576 reg. \$40
\$23.99



Anew Platinum Eye & Lip Cream
 .5 oz. net wt.
 902-614 reg. \$42
\$27.99



Anew Platinum Firm and Sculpt Cream for Neck and Chest
 1.7 oz. net wt.
 763-584 reg. \$42
\$27.99



Anew Platinum Day Cream Broad Spectrum SPF 25
 1.7 oz. net wt.
 184-146 reg. \$42
\$27.99



Anew Platinum Night Cream
 1.7 oz. net wt.
 753-439 reg. \$42
\$27.99



Isa Knox Anew Clinical Revitalize & Reveal Resurfacing Lotion for Body
 5 fl. oz.
 390-785 reg. \$34
\$19.99



Isa Knox Anew Clinical Revitalize & Reveal Intensive Peel
 1 fl. oz.
 780-025 reg. \$45
\$27.99



Isa Knox Anew Clinical Revitalize & Reveal Resurfacing Expert Smoothing Fluid
 1 fl. oz.
 852-282 reg. \$44
\$27.99



Anew Platinum Age Delay Serum
 1 fl. oz.
 625-609 reg. \$45
\$26.99



Anew Platinum Sculpting Body Serum
 6.7 fl. oz.
 506-249 reg. \$45
\$26.99



Anew Platinum Regimen Set
 Three full-size day, night and eye creams; one try-it-size serum.
 923-467 reg. \$128
\$54.99



Anew Power Serum
 1 fl. oz.
 417-187 reg. \$45
\$26.99



Isa Knox Anew Clinical Line Eraser with Retinol [1.0%] Advanced Retinol Serum
 1 fl. oz.
 390-751 reg. \$50
\$39.99



Isa Knox Anew Clinical Line Eraser with Retinol Treatment
 1 oz. net wt.
 763-330 reg. \$45
\$27.99



Isa Knox Anew Clinical Line Eraser with Retinol Targeted Treatment
 .67 fl. oz.
 925-159 reg. \$40
\$23.99



**Anew Vitamin C
Illuminating Priming
Moisturizer**
1.7 fl. oz.
914-671 reg. \$34
\$18.99



**Anew Vitamin C
Brightening Serum**
1 fl. oz.
522-066
reg. \$44
\$24.99



**Anew Vitamin C
Brightening Eye Cream**
.5 fl. oz.
953-602
reg. \$34
\$18.99



**Isa Knox LXNEW Clean
Nourishing Cream
Cleanser**
5 fl. oz. 717-990
reg. \$12
\$9.99



**Isa Knox LXNEW Clean
2-in-1 Exfoliating
Cleansing Balm**
3.5 oz. net wt. 718-006
reg. \$30
\$24.99



**Anew Vitamin C
Nourishing Body Butter**
7.8 fl. oz.
443-767
reg. \$32
\$17.99



**Anew Vitamin C
Glow Body Scrub**
9 oz. net wt.
443-752
reg. \$36
\$19.99



**Anew Vitamin C
Antioxidant Lip Treatment**
.13 oz. net wt.
784-547
reg. \$14
\$7.99



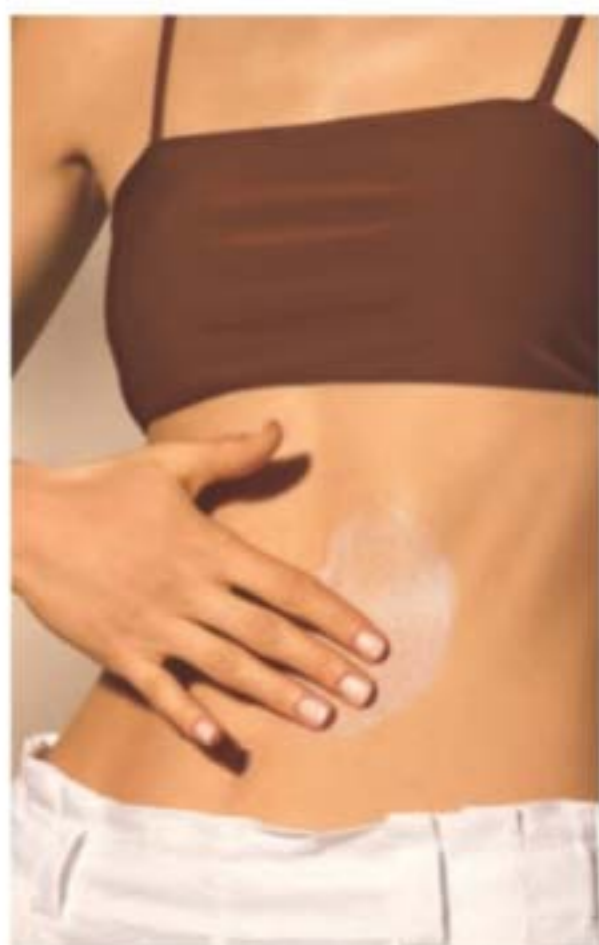
**Isa Knox LXNEW Clean
Soothing Whipped Oil
Cleanser**
5 fl. oz. 718-025
reg. \$16
\$12.99



**Anew Hydra Fusion
1.5% Hyaluronic Acid Serum**
1 fl. oz.
290-390
reg. \$44
\$24.99



**Anew Hydra Fusion
De-Puffing Eye Serum**
.5 fl. oz.
137-737
reg. \$34
\$18.99



**Isa Knox Anew Solaire
Active Face
& Body Protection Lotion
Broad Spectrum SPF 50**
2.7 fl. oz. 154-948 reg. \$35
\$27.99



**Isa Knox Anew Solaire
Everyday Face Protection Lotion
Broad Spectrum
SPF 50**
1.7 fl. oz. 911-400 reg. \$32
\$24.99



**Anew Hydra Fusion
Cleansing Micellar Water**
10.1 fl. oz.
139-380
reg. \$14
\$8.99



**Anew Hydra Fusion
Nighttime Facial Treatment**
1.7 oz. net wt.
139-429
reg. \$34
\$18.99



**Anew Hydra Fusion
Gel Cream**
1.7 oz. net wt.
266-893
reg. \$34
\$18.99



Farm Rx Bakuchiol Eye Cream
1 fl. oz. 565-834
reg. \$37
\$27.99



Farm Rx Bakuchiol Cream
3.04 fl. oz. 004-044
reg. \$44
\$32.99



Farm Rx Super Greens Multivitamin Moisture Cream
3.04 fl. oz. 314-141
reg. \$37
\$27.99



Rice Water Bright Foaming Cleanser
Smaller size! 5 fl. oz.
478-479
reg. \$8
\$6.49



Rice Water Bright Foaming Cleanser
10.1 fl. oz.
508-093
reg. \$13
\$11



Farm Rx Bakuchiol Serum
1 fl. oz. 247-417
reg. \$44
\$32.99



Farm Rx Super Greens Cooling Gel
3.04 fl. oz. 354-227
reg. \$37
\$27.99



Farm Rx Super Greens Refreshing Eye Cream
1 fl. oz. 412-826
reg. \$31
\$22.99



Rice Water Bright Rice Bran Gentle Exfoliating Cleanser
10.1 fl. oz.
376-865
reg. \$15.99
\$12.99



Rice Water Bright Cleansing Facial Wipes
50 sheets.
508-108
reg. \$11
\$9



Farm Rx Green Goddess Facial Oil
1 fl. oz. 934-733
reg. \$50
\$39.99



Farm Rx Super Greens Refreshing Gel Cleanser
8.11 fl. oz. 913-049
reg. \$25
\$17.99



Avon Solutions Nurtura Replenishing Cream
1.7 fl. oz. 908-263
reg. \$14
\$9.99



Rice Water Bright Facial Cleansing Lotion
6.76 fl. oz.
720-184
reg. \$12
\$9.99



Rice Water Bright Light Facial Cleansing Oil
5 fl. oz. 720-199
reg. \$14
\$11.99



Avon Solutions Banishing Cream Skin Discoloration Improver
2.5 fl. oz. 267-115
reg. \$14
\$9.99



Avon Solutions Anti-Aging Cream
1.7 fl. oz. 949-460
reg. \$14
\$9.99



Avon Solutions Dramatic Firming Cream
1.7 fl. oz. 374-657
reg. \$14
\$9.99



Rice Water Bright Mild Cleansing Water
16.9 fl. oz.
288-360
reg. \$14.40
\$12



Rice Water Bright Facial Massage Cream
6.7 fl. oz. 450-200
reg. \$24
\$19



**Far Away
Eau de Parfum**
1.7 fl. oz. 685-712
reg. \$25
\$18.99



**Far Away
Hair and Body Mist**
3.25 fl. oz. 572-536
reg. \$16
\$11.99



**Far Away
Body Scrub & Wash**
6.7 fl. oz. 143-360
reg. \$12
\$9.99



**Rare Gold
Eau de Parfum**
1.7 fl. oz. 933-115
reg. \$25
\$18.99



**Rare Amethyst
Eau de Parfum**
1.7 fl. oz. 933-062
reg. \$25
\$18.99



**Imari Seduction
Eau de Toilette**
1.7 fl. oz. 452-897
reg. \$25
\$18.99



**Far Away
Body Lotion**
6.7 fl. oz. 082-881
reg. \$10
\$6.99



**Far Away
Hand Cream**
2.5 fl. oz. 364-850
reg. \$7
\$4.99



**Far Away Bali
Eau de Parfum**
1.7 fl. oz. 451-389
reg. \$25
\$18.99



**Imari Amor
Eau de Parfum**
1.7 fl. oz. 762-573
reg. \$25
\$18.99



**Imari
Eau de Toilette**
1.7 fl. oz. 871-496
reg. \$25
\$18.99



**Haiku Reflection
Eau de Parfum**
1.7 fl. oz. 617-657
reg. \$25
\$18.99



**Far Away Gold
Eau de Parfum**
1.7 fl. oz. 685-727
reg. \$25
\$18.99



**Far Away Infinity
Eau de Parfum**
1.7 fl. oz. 318-481
reg. \$25
\$18.99



**Rare Pearls
Eau de Parfum**
1.7 fl. oz. 761-615
reg. \$25
\$18.99



**Haiku Kyoto Flower
Eau de Parfum**
1.7 fl. oz. 144-352
reg. \$25
\$18.99



**Haiku
Eau de Parfum**
1.7 fl. oz. 601-030
reg. \$25
\$18.99



**Haiku
Hair and Body Mist**
3.25 fl. oz. 572-574
reg. \$16
\$11.99



**Rare Pearls
Hair and Body Mist**
3.25 fl. oz. 572-851
reg. \$16
\$11.99



**Rare Pearls
Body Lotion**
6.7 fl. oz. 082-915
reg. \$10
\$6.99



**Rare Pearls
Hand Cream**
2.5 fl. oz. 364-827
reg. \$7
\$4.99



**Haiku
Body Scrub & Wash**
6.7 fl. oz. 143-208
reg. \$12
\$9.99



**Haiku
Body Lotion**
6.7 fl. oz. 447-820
reg. \$10
\$6.99



**Haiku
Hand Cream**
2.5 fl. oz. 364-808
reg. \$7
\$4.99



**LYRD Honeysuckle Blossom
Eau de Parfum**
1.7 fl. oz. 616-282
reg. \$24
\$20



**LYRD Peony Rosé
Eau de Parfum**
1.7 fl. oz. 616-210
reg. \$24
\$20



**LYRD Oud Rose
Eau de Parfum**
1.7 fl. oz. 954-412
reg. \$38
\$32



**Black Suede
Eau de Toilette**
3.4 fl. oz. 908-703
reg. \$22
\$14.99



**Black Suede
Hair & Body Wash**
5 fl. oz. 230-200
reg. \$8
\$3.99



**Black Suede
Aftershave Conditioner**
3.4 fl. oz. 367-238
reg. \$8
\$3.99



**Live Out Loud
Eau de Parfum**
1.7 fl. oz. 142-000
reg. \$40
\$26.49



**Live Out Loud #4U
Eau de Parfum**
1.7 fl. oz. 735-968
reg. \$40
\$26.49



**Today
Eau de Parfum**
1.7 fl. oz. 325-920
reg. \$30
\$26.49



Black Suede Bar Soap
3.17 oz. net wt.
495-565
reg. \$6
\$3.99



**Avon Exploration
Eau de Toilette**
2.5 fl. oz. 593-666
reg. \$25
\$18.99



**Wild Country
Cologne**
3 fl. oz. 086-466
reg. \$22
\$14.99



Mesmerize Cologne
3.4 fl. oz.
871-458
reg. \$25
\$18.99



**Mesmerize Black
Eau de Toilette**
3.4 fl. oz. 305-667
reg. \$25
\$18.99



Perceive Cologne
3.4 fl. oz.
194-550
reg. \$25
\$18.99



**Alpha
Eau de Toilette**
3.4 fl. oz. 088-598
reg. \$25
\$18.99



**Studio 1886 Gentleman
Eau de Toilette**
1.7 fl. oz. 708-750
reg. \$50
\$39



**Studio 1886 Gentleman
Aftershave Lotion**
6.7 fl. oz. 708-927
reg. \$16
\$12.99



**Wild Country
Aftershave Splash**
4 fl. oz. 366-432
reg. \$13
\$10.49



**Wild Country
Hair & Body Wash**
5 fl. oz. 215-188
reg. \$8
\$3.99



Wild Country Bar Soap
3.17 oz. net wt.
495-570
reg. \$6
\$3.99



Timeless Cologne
1.7 fl. oz.
037-930
reg. \$18
\$12.99



Timeless Hand Cream
2.5 fl. oz.
234-740
reg. \$6
\$3.99



Timeless Perfumed Skin Softener
5 fl. oz.
104-478
reg. \$8
\$3.99



Haiku Perfumed Skin Softener
5 fl. oz.
813-973
reg. \$8
\$3.99



Dreamlife Cologne
1.7 fl. oz.
236-227
reg. \$18
\$12.99



Sweet Honesty Cologne
1.7 fl. oz.
037-595
reg. \$18
\$12.99



Sweet Honesty Hand Cream
2.5 fl. oz.
234-789
reg. \$6
\$3.99



Sweet Honesty Perfumed Skin Softener
5 fl. oz.
104-463
reg. \$8
\$3.99



Imari Perfumed Skin Softener
5 fl. oz.
818-239
reg. \$8
\$3.99



Topaze Cologne
1.7 fl. oz.
735-217
reg. \$18
\$12.99



Night Magic Cologne
1.7 fl. oz.
168-682
reg. \$18
\$12.99



Night Magic Hand Cream
2.5 fl. oz.
235-440
reg. \$6
\$3.99



**Night Magic Evening Musk
Perfumed Skin Softener**
5 fl. oz. 862-112
reg. \$8
\$3.99



Far Away Perfumed Skin Softener
5 fl. oz.
812-981
reg. \$8
\$3.99



Free O₂ Eau de Toilette
1.7 fl. oz.
265-658
reg. \$18
\$12.99



Odyssey Cologne
1.7 fl. oz.
168-697
reg. \$18
\$12.99



Candid Cologne
1.7 fl. oz.
038-295
reg. \$18
\$12.99



Odyssey Perfumed Skin Softener
5 fl. oz.
862-108
reg. \$8
\$3.99



Candid Perfumed Skin Softener
5 fl. oz.
103-926
reg. \$8
\$3.99



- | | | | | | | | | |
|------------------------|---------------------|---------------------------------------|--------------------------|------------------------|----------------------|-----------------------------|-------------------------|-----------------------|
| Wild Cherry
449-708 | Blaze
896-880 | Constellation
(Shimmer)
449-731 | Stellar
726-550 | Honeyflower
726-531 | Poppy
897-651 | Aster
448-769 | Desert Moon
449-803 | Windstorm
883-845 |
| Equinox
449-818 | Twilight
449-822 | Cyclone
890-566 | Sierra Sunset
890-805 | Luna
895-170 | Wildrose
898-533 | Plum Blossom
449-765 | Dahlia
726-350 | Rose Angel
897-939 |
| Aurora
726-584 | Hibiscus
898-021 | Wildflower
898-040 | Eclipse
448-740 | Tulip
449-712 | Celestial
895-352 | Morning
Glory
449-750 | Violet Night
898-548 | |

**fmg Glimmer
Satin Lipstick**
.10 oz. net wt.
reg. \$12
\$8.99



- | | | | |
|----------------------|------------------|---------------------|----------------------|
| Aubergine
786-960 | Taupe
958-126 | Espresso
958-896 | Buff
956-912 |
| Rosewood
958-547 | Blush
958-638 | Berry
958-619 | Smokeshow
787-068 |
| Mauve
958-331 | Moss
786-540 | PeriWink
787-053 | Azure
959-213 |

**fmg CathyCat
Shadow Gaze Matte Color Stick**
.0476 oz. net wt.
reg. \$19
\$14.99



Essential Eyes
404-745



Enchanted Eyes
401-440

**fmg Cashmere
Eyeshadow Palette**
.63 oz. total net wt. reg. \$40
\$33 each



- | | |
|------------------------|--------------------------|
| Lovin' Life
698-867 | Birthday Suit
375-706 |
| PYT
375-691 | Surprise!
375-710 |
| Fine Wine
375-725 | Birthday Post
375-730 |

**fmg Glimmer
Birthday Balm Lip Crayon**
.1 oz. net wt. reg. \$15
\$11.99



- | | |
|-------------------------|------------------------|
| Love Affair
063-242 | Pucker Up
063-128 |
| Secret Crush
063-147 | Rendezvous
063-166 |
| Tease
063-132 | Flirtatious
063-219 |

fmg LOVE Lip Butter
.09 oz. net wt.
reg. \$18
\$13.99



- | | | | |
|---|---|---|--|
| MATTE SATEEN
Citrine
451-120 | MATTE SATEEN
Pink Sapphire
448-591 | MATTE SATEEN
Tiger's Eye
500-585 | MATTE SATEEN
Jasper
500-566 |
| SHIMMER
Pink Topaz
479-150 | SHIMMER
Crystal Lilac
479-040 | SHIMMER
Rose Gold
469-095 | SHIMMER
Bronze Age
469-100 |
| GLITTER
Peach Sapphire
469-057 | GLITTER
Fool's Gold
469-076 | GLITTER
Ultramarine
469-042 | |

**fmg Glimmershadow
Liquid Eyeshadow**
.07 fl. oz. reg. \$12
\$8.99



- | | | |
|-------------------------|----------------------------|----------------------|
| Plum Jam
481-873 | Cherry Crush
481-400 | Pink Fizz
481-706 |
| Felt Pink
495-240 | Blackberry Bite
495-364 | |
| Crazy Rabbit
495-292 | Sour Candy
495-254 | |

**TPSY
Forever Lip Marker**
.08 fl. oz.
reg. \$17
\$13



- | |
|------------------------|
| Love Galore
495-197 |
| My Boo
495-216 |

**TPSY
Drunk Shiny Lip Oil**
.13 oz. net wt.
reg. \$17
\$13



**fmg Glimmer
Eyeshadow Quad**
.21 oz. total net wt.
reg. \$15
\$11.99

- | | | | | |
|-----------------------------------|---------------------------------|-----------------------------------|---------------------------------|----------------------------------|
| MATTE Calypso
741-261 | MATTE Tigress
741-333 | MATTE Bombshell
741-170 | MATTE Icon
741-439 | MULTI Goddess
901-330 |
| MULTI Muse
880-459 | MULTI Minx
885-738 | MULTI Maven
884-750 | MULTI Siren
901-493 | MULTI Mistress
883-902 |
| MULTI Temptress
884-731 | MULTI Idol
900-975 | MULTI Vixen
901-474 | MULTI Darling
880-789 | |



		
Blackest Black 334-366	Saturn Grey 334-328	Majestic Plum 334-313
		
Cosmic Brown 334-351	Starry Night 334-347	Emerald Green 334-332

fmg Glimmer Cream Eyeliner
.01 oz. net wt.
reg. \$9
\$3.99




			
Honey Peach 327-721	Lava Red 327-740	Passion Red 327-650	Red Brick 330-451
			
Mystery Mauve 330-538	Candy Apple 327-903	Pink Bouquet 330-356	Merlot 330-284
			
Au Naturel 330-318	Simply Spice 330-614	Chocolate 330-667	Perfect Plum 330-887

fmg Glimmer Lipliner
.01 oz. net wt.
reg. \$9
\$3.99




	
Blonde 792-499	Soft Brown 792-522
	
Medium Brown 792-537	Brown Black 792-556

fmg Colors of LOVE Hi-Brow Tinted Brow Gel
.11 fl. oz.
reg. \$18
\$13.99



fmg Colors of LOVE Hi-Brow Sculpting Brow Gel
.11 fl. oz.
536-695
reg. \$18
\$13.99



		
Black Ice 331-610	Sterling 331-960	Smoky Diamond 331-280
		
Sugar Plum 331-625	Purple Rain 332-071	Brown Sugar 331-568
		
Twilight Sparkle 331-553	Olive 331-940	Teal Sparkle 331-606

fmg Glimmer Diamond Eyeliner
.01 oz. net wt.
reg. \$9
\$3.99



			
Blackest Night 229-491	Smoky Grey 332-162	Raisin 332-200	Brown Chocolate 332-124
			
Midnight Blue 332-158	Blue Skies 334-237	Seafoam Green 334-241	

fmg Glimmer Waterproof Eyeliner
.01 oz. net wt.
reg. \$9
\$3.99




Blackest Black 698-670

fmg LOVE at 1st Lash Mascara
.3 fl. oz.
reg. \$18
\$13.99




Waterproof Blackest Black 480-953

fmg LOVE at 1st Lash Waterproof Mascara
.29 fl. oz.
reg. \$18
\$13.99




Rich Black 153-736

fmg Cashmere Ultimate Volume Mascara
.27 fl. oz.
reg. \$23
\$18



	
Light Blonde 331-109	Blonde 331-113
	
Tawny 331-128	Light Brown 331-151
	
Dark Brown 331-147	Brunette 331-242

fmg Glimmer Brow Definer
.01 oz. net wt.
reg. \$9
\$3.99



	
Black 016-389	Black Brown 016-446

fmg Glimmer Always On Point Eyeliner
.01 oz. net wt. reg. \$10
\$7.99




Blackest Black 354-380

fmg Glimmer Liquid Eyeliner
.037 fl. oz.
reg. \$12
\$9.99




Black 723-107

fmg Glimmer Wash-Off Waterproof Mascara
.21 oz. net wt.
reg. \$12
\$8.99



	
Black 698-848	Brown Black 698-852

fmg Glimmer SuperExtend Nourishing Mascara
.237 fl. oz.
reg. \$13
\$9.99




Black 698-829

fmg Glimmer SuperShock Volumizing Mascara
.338 fl. oz.
reg. \$13
\$9.99





 Fair 932-491	 Fair Light 932-620	 Light 932-640
 Light Medium 932-654	 Soft Medium 932-783	 Medium 932-836
 Medium Deep 933-153	 Tan Deep 933-168	 Deep 933-172

fmg Match Filter Serum Tint Foundation
.31 oz. net wt.
reg. \$21
\$15.99




fmg Match Set Finishing Powder
.22 oz. net wt. **932-472**
reg. \$19
\$14.99



 Prosecco 905-580	 Rosé 463-628
---	---


fmg Glimmer Powder Illuminator
.35 oz. net wt.
reg. \$14
\$10.99












fmg GLOKOLOR Lip Serum Pencil
.06 oz. net wt.
787-508
reg. \$20
\$16



fmg Match Prime Face Perfector
1 fl. oz.
103-744
reg. \$17
\$12.99



 Fair 368-234	 Fair Light 368-249	 Light 368-253
 Light Medium 368-344	 Soft Medium 368-382	 Medium 368-397
 Medium Deep 368-416	 Tan Deep 368-420	 Deep 368-454

fmg Match Tint Radiant Tinted Moisturizer
1 fl. oz.
reg. \$14
\$10.99



 Petal Pink 618-209	 Pink Passion 618-213
---	---

fmg Glimmer Powder Blush
.28 oz. net wt.
reg. \$14
\$10.99



fmg GLOKOLOR Hybrid Face Primer
1 fl. oz. **787-637**
reg. \$24
\$20

 Sherbet: neutralizes dark circles & marks 726-790	 Gelato: brightens dullness 726-785	 Pistachio: neutralizes redness 726-770
---	--	--



fmg Match Wand Correcting Stick
.21 oz. net wt.
reg. \$18
\$13.99





fmg Cashmere Under Eye Primer
.317 oz. net wt.
010-429
reg. \$24
\$19

 Plumeria 628-851
 Rosette 628-832




fmg Glimmer Lip & Cheek Stain
.19 fl. oz.
reg. \$17
\$12.99

 Icy Petal 022-854	 Blushing Nude 022-911
 Golden Rose 022-840	 Tropical Peach 022-964
 Crushed Berry 022-945	



fmg Glimmer Be Blushed Cheek Color
.14 oz. net wt.
reg. \$15
\$11.99



fmg GLOKOLOR Hybrid Face Mist
2.7 fl. oz. **787-599**
reg. \$24
\$20



fmg Vanity Organizer
9 1/2" L x 6" W x 5" H.
022-816
reg. \$30
\$23.99



fmg Makeup Remover Wipes
Resealable pack of 24 wipes.
333-867
reg. \$10
\$7.99



fmg Set & Fix Spray
1.7 fl. oz.
416-707
reg. \$15
\$9.99



fmg Kabuki Brush
3 3/4" L x 1" diam.
732-370
reg. \$19
\$14.99



fmg Eyeshadow Blending Brush
6" L. 933-320
reg. \$15
\$11.99



fmg Blush & Contour Brush
7 1/4" L. 933-259
reg. \$22
\$16.99



fmg Moisturizing Eye Makeup Remover Lotion
2.5 fl. oz. 543-272
reg. \$8
\$5.99



fmg Waterproof Lip & Eye Makeup Remover
3.7 fl. oz. 352-243
reg. \$12
\$7.99



fmg Express Makeup Brush Wash
1 fl. oz. 141-368
reg. \$14
\$10.99



fmg Complexion Blending Brush
6 1/2" L. 933-210
reg. \$23
\$17.99



fmg Precision Eye Brush
5 1/4" L. 933-187
reg. \$15
\$11.99



Daily Beauty Tools Tweezers
3 1/2" L. 747-020
reg. \$4
\$2.99



fmg Oil Rewind Roller Ball
1" W x 3" H. 508-294
reg. \$18
\$13.99



fmg Flawless Complexion Sponge
2 1/2" L x 1 1/2" W. 140-160
reg. \$10
\$7.99



fmg Unready Makeup Remover Cloth
9 1/4" sq. 230-176
reg. \$14
\$10.99



fmg Glimmer Nail Lacquer Eraser Pen
.135 fl. oz. 704-443
reg. \$12
\$8.99



fmg Glimmer Nail Lacquer
Nail Base & Top Coat
Not shown. 018-161
Each, .4 fl. oz. reg. \$12
\$8.99



Sold separately:
Bonus-Size Skin So Soft and Moisture Therapy Body Lotion Pump
 101-149
\$3

Soft & Sensual Bonus-Size Body Lotion
 33.8 fl. oz.
 336-062
 reg. \$23
\$18.99
 Pump sold separately.

Soft & Sensual Bonus-Size Shower Gel
 33.8 fl. oz.
 018-142
 reg. \$18
\$13.99

Soft & Sensual Shower Gel
 5 fl. oz.
 435-600
 reg. \$8
\$5.19

Original Bath Oil
 16.9 fl. oz.
 439-040
 reg. \$24
\$16.99

Original Bonus-Size Bath Oil
 25 fl. oz.
 037-690
 reg. \$30
\$21.69

Original Bath Oil Spray
 5 fl. oz.
 967-571
 reg. \$14
\$9.29
 Sold separately:
Bath Oil Spray Pump
 (not shown)
 101-320
\$3

Original Gelled Body Oil
 6.76 fl. oz.
 939-500
 reg. \$13
\$8.69

Soft & Sensual Body Lotion
 11.8 fl. oz.
 934-312
 reg. \$11
\$7.69

Soft & Sensual Bonus-Size Bath Oil
 25 fl. oz.
 862-920
 reg. \$30
\$21.69

Soft & Sensual Bath Oil
 16.9 fl. oz.
 504-614
 reg. \$24
\$16.99

Soft & Sensual Gelled Body Oil
 6.76 fl. oz.
 908-244
 reg. \$13
\$8.69

Original Shower Gel
 5 fl. oz.
 914-580
 reg. \$8
\$5.19

Original Bonus-Size Shower Gel
 33.8 fl. oz.
 433-444
 reg. \$18
\$13.99

Original Body Lotion
 11.8 fl. oz.
 761-634
 reg. \$11
\$7.69

Original Bonus-Size Body Lotion
 33.8 fl. oz.
 336-043
 reg. \$23
\$18.99
 Pump sold separately.

Soft & Sensual Beauty Bar Soap
 3.17 oz. net wt.
 543-215
 reg. \$4.50
\$3.49

Soft & Sensual Replenishing Hand Cream
 3.4 fl. oz.
 867-315
 reg. \$5
\$2.69

Acne-Prone Skin Soothing Spot Gel
 .5 fl. oz.
 072-721
 reg. \$18
\$13.99

Acne-Prone Skin Foaming Cleanser
 5 fl. oz.
 041-647
 reg. \$17
\$12.99

Original Beauty Bar Soap
 3.17 oz. net wt.
 543-110
 reg. \$4.50
\$3.49

Original Replenishing Hand Cream
 3.4 fl. oz.
 941-268
 reg. \$5
\$2.69

Radiant Moisture Shower Gel
 5 fl. oz.
 410-914
 reg. \$8
\$5.19

Radiant Moisture Bonus-Size Bath Oil
 25 fl. oz.
 249-788
 reg. \$30
\$21.69

Acne-Prone Skin Body Pads
 70 pads.
 039-330
 reg. \$30
\$24.99

Acne-Prone Skin Exfoliating Body Wash
 10.1 fl. oz.
 041-556
 reg. \$20
\$15.99

Acne-Prone Skin Gentle Body Wash
 10.1 fl. oz.
 039-325
 reg. \$20
\$15.99

Acne-Prone Skin Soothing Gel
 6.1 fl. oz.
 040-636
 reg. \$20
\$15.99

Radiant Moisture Bonus-Size Shower Gel
 33.8 fl. oz.
 433-922
 reg. \$18
\$13.99

Radiant Moisture Bonus-Size Body Lotion
 33.8 fl. oz.
 337-346
 reg. \$23
\$18.99
 Pump sold separately.

Radiant Moisture Replenishing Hand Cream
 3.4 fl. oz.
 892-650
 reg. \$5
\$2.69

Supreme Nourishment Bonus-Size Body Lotion
 33.8 fl. oz.
 337-475
 reg. \$23
\$18.99
 Pump sold separately.

Sold separately:
Bonus-Size Body Lotion Pump
 101-149
\$3



Moisture Therapy Bonus-Size Intensive Healing & Repair Body Lotion
 33.8 fl. oz.
 325-547
 reg. \$18
\$14.99
 Pump sold separately.



Moisture Therapy Bonus-Size Daily Skin Defense Body Lotion
 33.8 fl. oz.
 603-028
 reg. \$18
\$14.99
 Pump sold separately.



Moisture Therapy Bonus-Size Calming Relief Body Lotion
 33.8 fl. oz.
 761-620
 reg. \$18
\$14.99
 Pump sold separately.



Avon Aromatherapy Body Lotion Bright Day Ahead
 5.8 fl. oz.
 584-670
 reg. \$17
\$13.99



Avon Aromatherapy Body Lotion Bye-Bye Stress
 5.8 fl. oz.
 584-684
 reg. \$17
\$13.99



Avon Aromatherapy Body Lotion Sleep Tight Zzz
 5.8 fl. oz.
 584-866
 reg. \$17
\$13.99

Veilment Himalaya Pink Salt Exfoliating Soap
 5.3 oz. net wt.
 260-440
 reg. \$8
\$6



Moisture Therapy Intensive Healing & Repair Extra Strength Cream
 5.3 oz. net wt.
 772-972
 reg. \$8
\$5.39



Moisture Therapy Balance + Soothe Body Wash
 13.2 fl. oz.
 438-078
 reg. \$23
\$18



Moisture Therapy Balance + Soothe Body Lotion
 13.2 fl. oz.
 438-082
 reg. \$25
\$20



Foot Works Deodorizing Spray
 3.5 oz. net wt.
 313-236
 reg. \$10
\$7.99



Veilment Glacial Water Cooling Body Scrub & Cleanser
 13.5 fl. oz.
 735-399
 reg. \$15
\$13.69



Veilment Dead Sea Salt Body Scrub & Cleanser
 13.5 fl. oz.
 707-988
 reg. \$15
\$13.69



Veilment Himalaya Pink Salt Body Scrub & Cleanser
 13.5 fl. oz.
 708-252
 reg. \$15
\$13.69



Veilment Black Rose Body Scrub & Cleanser
 13.5 fl. oz.
 707-969
 reg. \$15
\$13.69

Foot Works Overnight Renewing Cream
 3.4 fl. oz.
 324-225
 reg. \$9
\$5.99



Foot Works Deep Moisturizing Cream
 2.5 fl. oz.
 308-962
 reg. \$6
\$4.69



Foot Works Intensive Moisture Foot Cream
 2.5 fl. oz.
 302-012
 reg. \$6
\$4.99



Foot Works Arthritis Achy Foot and Muscle Cream
 2.5 fl. oz.
 208-400
 reg. \$7
\$5.99



Veilment CBD Dry Body Oil
 3.73 fl. oz.
 869-485
 reg. \$37
\$30



Veilment CBD Nourishing Body Cream (Tube)
 6.7 fl. oz.
 254-229
 reg. \$38
\$33



Veilment CBD Soothing & Nourishing Body Cream
 1.7 fl. oz.
 524-509
 reg. \$33
\$29.50



Veilment CBD Nourishing Body Cream
 5 fl. oz.
 524-513
 reg. \$33
\$29.50

Foot Works Intensive Callus Cream
 3.4 fl. oz.
 851-310
 reg. \$7
\$5.99



Foot Works Maximum Strength Cracked Heel Cream
 2.5 fl. oz.
 310-404
 reg. \$7
\$5.99



Foot Works Pedicure Kit
 121-029
 reg. \$11
\$8.39



Foot Works Pedicure Tool
 592-712
 reg. \$11
\$8.39



Skin So Soft Supreme Nourishment Enriching Coconut Oil Wash
 11.8 fl. oz.
 366-380
 reg. \$15
\$9.99



Skin So Soft Comforting Shea Bath Oil
 16.9 fl. oz.
 015-071
 reg. \$24
\$16.99

Veilment Lumière Sunless Tanning Serum
 Each, 1.01 fl. oz.
 Light/Medium 422-307
 Medium/Dark 422-326
 reg. \$24
\$19.99 each



❖ Senses Gratitude
Lavender &
Cedarwood Candle
3 1/2" H x 3" diam.
7 oz. net wt. 504-686
reg. \$23
\$18.99



Senses Gratitude
Lavender &
Cedarwood
Room Spray
3.25 fl. oz.
361-851
reg. \$13
\$10.99



Senses Gratitude
Lavender &
Cedarwood
Air Diffuser
Six diffuser
reeds.
Fragrance oil,
2.37 fl. oz.
504-724
reg. \$30
\$24.99



Senses Gratitude
Lavender &
Cedarwood
Shower Steamers
Each, 1 oz. net wt.
504-428 reg. \$26
\$20.99 set of 6



Senses
Blushing
Cherry
Blossom
Hydrating
Shower
Gel
5 fl. oz.
423-299
reg. \$6
\$3.69



Senses
Silky
Vanilla
Hydrating
Shower
Gel
5 fl. oz.
462-105
reg. \$6
\$3.69



Senses
Fresh
Cucumber
& Melon
Hydrating
Shower
Gel
5 fl. oz.
462-071
reg. \$6
\$3.69



Senses
Juicy
Pomegranate
& Mango
Hydrating
Shower Gel
5 fl. oz.
462-139
reg. \$6
\$3.69



Senses Gratitude
Lavender &
Cedarwood Bath Salts
12.5 oz. net wt.
504-557
reg. \$23
\$18.99



Senses
Sparkling
Grapefruit
& Orange
Blossom
Shower Gel
10 fl. oz.
367-204
reg. \$17
\$13.99



Senses
Sparkling
Grapefruit
& Orange
Blossom
Body Lotion
8 fl. oz.
367-219
reg. \$17
\$13.99



Senses
Sparkling
Grapefruit
& Orange
Blossom
Body Mist
8 fl. oz.
034-687
reg. \$18
\$14.99



Senses
Cherry
Blossom
Bubble
Bath
24 fl. oz.
425-033
reg. \$11
\$8.99



Senses
Vanilla
Cream
Bubble
Bath
24 fl. oz.
214-220
reg. \$11
\$8.99



Senses
Cucumber
Melon
Bubble
Bath
24 fl. oz.
688-950
reg. \$11
\$8.99



Senses
Orange &
Honeysuckle
Bubble Bath
24 fl. oz.
633-952
reg. \$11
\$8.99



Senses
Sparkling
Grapefruit
& Orange
Blossom
Hand Soap
10.1 fl. oz.
415-127
reg. \$13.99
\$10.99



Senses
Sparkling
Grapefruit
& Orange
Blossom
Hand
Cream
2.5 fl. oz.
852-120
reg. \$6
\$4.99



Senses
Cozy
Vanilla &
Coconut
Shower
Gel
10 fl. oz.
200-227
reg. \$17
\$13.99



Senses
Cozy
Vanilla &
Coconut
Body
Lotion
8 fl. oz.
035-152
reg. \$17
\$13.99



Senses
Soft Pink
Bubble
Bath
24 fl. oz.
425-052
reg. \$11
\$8.99



Senses
Sensitive
Skin
Bubble
Bath
24 fl. oz.
213-151
reg. \$11
\$8.99



Senses
Endless
Ocean
Bubble
Bath
24 fl. oz.
425-048
reg. \$11
\$8.99



Senses
Lily &
Honeysuckle
Blossom
Bubble Bath
24 fl. oz.
423-394
reg. \$11
\$8.99



Senses Cozy Vanilla
& Coconut
Body Scrub
9 oz. net wt. 530-314
reg. \$22
\$17.99



Senses
Cozy
Vanilla &
Coconut
Body Mist
8 fl. oz.
034-888
reg. \$18
\$14.99



Senses
Cozy
Vanilla &
Coconut
Hand Soap
10.1 fl. oz.
178-675
reg. \$13.99
\$10.99



Senses
Cozy
Vanilla &
Coconut
Hand
Cream
2.5 fl. oz.
015-029
reg. \$6
\$4.99



Senses
Lavender
Garden
Bubble
Bath
24 fl. oz.
424-735
reg. \$11
\$8.99



Senses
Fresh
Bergamot
& Wild Mint
Hand
Cream
2.5 fl. oz.
852-498
reg. \$6
\$4.99



Avon
Shower
Brush
904-727
reg. \$10
\$7.99



Exfoliation Mitt
439-734
reg. \$11
\$8.99





Bug Guard Plus IR3535® Expedition Family-Size Pump Spray SPF 30
8 fl. oz.
324-316
reg. \$22
\$17.99
Pump sold separately.



Bug Guard Plus Picaridin Family-Size Pump Spray
8 fl. oz.
650-666
reg. \$22
\$17.99
Pump sold separately.



Sold separately:
Bug Guard Plus Family-Size Pump
for 8 fl. oz.
101-191
\$2.50



Bug Guard Plus IR3535® Expedition Pump Spray SPF 30
4 fl. oz.
324-320
reg. \$14
\$11.99
Pump sold separately.



Bug Guard Plus Picaridin Pump Spray
4 fl. oz.
324-335
reg. \$14
\$11.99
Pump sold separately.



Sold separately:
Bug Guard Plus Pump
for 4 fl. oz.
101-225
\$2.25



Bug Guard Plus IR3535® Expedition Aerosol Spray SPF 28
4 oz. net wt.
521-370
reg. \$20
\$14.99



Bug Guard Plus Picaridin Aerosol Spray
4 oz. net wt.
315-243
reg. \$20
\$14.99



Bug Guard Plus Picaridin Towelettes
Each, 9" L x 5 1/2" W, .3 fl. oz.
269-562
reg. \$16
\$11.69
pack of 8



Bug Guard Plus IR3535® Gentle Breeze SPF 30 Lotion
4 fl. oz.
851-324
reg. \$15
\$9.99



Bug Guard Anti-Itch Spray
2 fl. oz.
972-031
reg. \$11
\$8.99
Pump sold separately.



Sold separately:
Bug Guard Anti-Itch Spray Pump
for 2 fl. oz.
101-168
\$2



Roll-On Anti-Perspirant Deodorant
Each, 2.6 fl. oz.
reg. \$3.60
\$2.69 each



On Duty Sport
875-726



Perfumed Liquid Deodorant
2 fl. oz.
687-681
reg. \$6
\$4.50



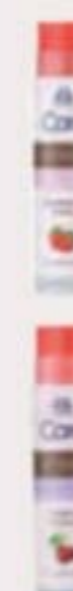
Avon Microbiome by REACH® Hygiene Deodorant Stick
2.65 oz. net wt.
524-528
reg. \$13
\$10.99



Avon Care Silicone Glove Protective Hand Cream
3.4 fl. oz.
366-887
reg. \$6
\$2.69



Skin So Soft Supreme Nourishment Tropical Coconut Lip Balm
.14 oz. net wt.
958-370
reg. \$2
\$1.39



Veilment Care Lip Balm Strawberry
602-720
Cherry 604-168
Each, .14 oz. net wt.
reg. \$2
99¢ each



Moisture Therapy Intensive Healing & Repair Moisturizing Lip Treatment Balm 285-117
Daily Defense 946-729
Each, .14 oz. net wt. reg. \$2
99¢ each



Moisture Therapy Intensive Healing & Repair Hand Cream
4.2 fl. oz.
482-937
reg. \$6
\$2.69



Root Touch-Up
Each,
.25 oz. net wt.
reg. \$18
\$15.99



**BioSilk®
Silk Therapy®**
5.64 fl. oz.
011-349
reg. \$35
\$28.99



**Dr. Groot
Scalp Fortifying
Hair-Thickening
Shampoo**
13.5 fl. oz.
778-014
reg. \$35
\$29



**Dr. Groot
Premium
Scalp
Cleansing
Brush**
065-776
reg. \$19
\$16



**CHI® Essentials
Replenishing
Shampoo**
12 fl. oz.
589-140
reg. \$20
\$16.99



**CHI® Essentials
Moisturizing
Conditioner**
12 fl. oz.
589-409
reg. \$20
\$16.99



**CHI® Essentials
Repairing
Serum**
6 fl. oz.
589-413
reg. \$33
\$27.59



**Dr. Groot
Scalp
Fortifying
Serum
Treatment**
6.7 fl. oz.
782-271
reg. \$35
\$29



**Dr. Groot
Anti-
Dandruff
Scalp Care
Shampoo**
10.1 fl. oz.
451-412
reg. \$27
\$21.99



**Dr. Groot
Anti-Dandruff
Scalp Care
2-in-1 Shampoo
and Conditioner**
10.1 fl. oz.
451-431
reg. \$27
\$21.99



**CHI® Essentials
Revive Keratin
+ Bonding
Restoring
Shampoo**
12 fl. oz.
451-192
reg. \$25
\$19.99



**CHI® Essentials
Revive Keratin
+ Bonding
Restoring
Conditioner**
12 fl. oz.
451-211
reg. \$25
\$19.99



**CHI® Essentials
Revive Keratin
+ Bonding
Protecting
Serum**
3 fl. oz.
451-340
reg. \$42
\$34.99



**Elastine
Salon de
Color
Color Vibe
Purple
Shampoo**
8.4 fl. oz.
436-109
reg. \$17
\$13.99



**Elastine
Salon de
Color
Color Vibe
Purple
Conditioner**
8.4 fl. oz.
436-955
reg. \$17
\$13.99



**Avon
Detangling
Comb**
504-820
reg. \$5.99
\$4.99



**CHI®
1" Volcanic Lava
Ceramic Pro
Spin 'n' Curl**
471-527
reg. \$199
\$179



**CHI®
Advanced
Ionic Compact
Hair Dryer**
Attachments
included.
471-474
reg. \$150
\$135



**CHI®
ENVIRO 54®
Natural Hold
Hair Spray**
10 oz. net wt.
908-450
reg. \$26.50
\$21.50



**Avon
Blow-Dry
Round
Hairbrush**
504-800
reg. \$17.99
\$14.99



**Avon
Compact
Hairbrush**
504-743
reg. \$9.99
\$7.99



**Avon
Detangling
Hairbrush**
504-815
reg. \$12.99
\$9.99



Elastine Botanicals Rosemary & Sea Salt Volumizing Shampoo 6.7 fl. oz. 240-556 reg. \$4.50 **\$3.79**



Elastine Botanicals Rosemary & Sea Salt Volumizing Conditioner 6.7 fl. oz. 246-831 reg. \$4.50 **\$3.79**



Elastine PropoliThera Volumizing Shampoo 16.9 fl. oz. 892-607 reg. \$18 **\$15.99**



Elastine PropoliThera Volumizing Conditioner 16.9 fl. oz. 892-870 reg. \$18 **\$15.99**



Elastine PropoliThera Damage Repair Shampoo 16.9 fl. oz. 053-082 reg. \$18 **\$15.99**



Elastine Botanicals Cherry Blossom & Hyaluronic Acid Moisturizing Shampoo 6.7 fl. oz. 239-943 reg. \$4.50 **\$3.79**



Elastine Botanicals Cherry Blossom & Hyaluronic Acid Moisturizing Conditioner 6.7 fl. oz. 240-059 reg. \$4.50 **\$3.79**



Elastine Botanicals Argan & Castor Anti-Frizz Shampoo 6.7 fl. oz. 150-866 reg. \$5.39 **\$4.49**



Elastine Botanicals Argan & Castor Anti-Frizz Conditioner 6.7 fl. oz. 150-904 reg. \$5.39 **\$4.49**



Elastine PropoliThera Damage Repair Conditioner 16.9 fl. oz. 638-681 reg. \$18 **\$15.99**



Elastine PropoliThera Damage Repair Hair Oil Serum 5.7 fl. oz. 895-190 reg. \$18 **\$15.99**

Elastine PropoliThera Damage Repair Hair Mask 10.1 fl. oz. 150-301 reg. \$18 **\$15.99**



Elastine Moisture Essentials Volume Shampoo 12.7 fl. oz. 495-106 reg. \$9 **\$6.99**



Elastine Moisture Essentials Volume Conditioner 12.7 fl. oz. 495-110 reg. \$9 **\$6.99**



Elastine Moisture Essentials Shine Shampoo 12.7 fl. oz. 495-125 reg. \$9 **\$6.99**



Elastine Moisture Essentials Shine Conditioner 12.7 fl. oz. 495-130 reg. \$9 **\$6.99**



Elastine PropoliThera Leave-In Conditioner 8.1 fl. oz. 102-570 reg. \$19 **\$15**



Elastine PropoliThera Serum Treatment 7.8 fl. oz. 359-821 reg. \$22 **\$18**

Elastine PropoliThera Hair Deep Conditioning Treatment Cap 053-761 reg. \$8 **\$6.99**



Advance Techniques 360 Nourish with Moroccan Argan Oil Leave-In Treatment 2 fl. oz. 511-411 reg. \$16 **\$11.69**



Advance Techniques Daily Shine Dry Ends Serum 2 fl. oz. 883-190 reg. \$11 **\$7.99**



Advance Techniques Daily Shine 2-in-1 Shampoo & Conditioner 11.8 fl. oz. 358-218 reg. \$11 **\$8.99**



Elastine CBD & Hemp Seed Oil Cooling & Soothing Conditioner 11.8 fl. oz. 436-989 reg. \$23 **\$19**



Elastine PropoliThera Aloe Dual-Active Hair Serum 3.4 fl. oz. 102-585 reg. \$30 **\$25**



Elastine HempharmX Hydrating Shampoo 13.5 fl. oz. 359-836 reg. \$24 **\$20**



Elastine HempharmX Hydrating Conditioner 13.5 fl. oz. 360-544 reg. \$24 **\$20**

try a serum

see what your skin care's been missing

**Avon Solutions
Banishing Serum**
An intensive
serum with
ingredients known
to help improve the
appearance of dark
spots and uneven
skin tone. 1 fl. oz.
507-905
reg. \$16
\$9.99



LOWEST PRICE
THIS YEAR

**Avon Solutions
Dramatic Firming Serum**
This moisturizing serum
contains effective anti-aging
ingredients that help promote
a more youthful appearance.
1 fl. oz. 507-871 reg. \$16
\$9.99

Avon Solutions Nurtura Serum
With skin-nourishing ingredients
known to help combat dryness
and flakiness, and
help hydrate. 1 fl. oz.
507-924 reg. \$16
\$9.99

Enjoy special prices and offers with an Avon account or Representative.

© 2024 The Avon Company. All rights reserved.

CAMPAIGN 7, 2024
THE AVON COMPANY
165 BROADWAY, NY, NY 10006
avon.com



Brochure effective until _____



See our commitment at
www.avon.com/animal-welfare

RETURN POLICY If you are not satisfied, return any item within 45 days. View Avon's full 45-Day Return Policy at avon.com/shipping-returns.