

AVON

CAMPAIGN 9

+ SPECIAL PRICES
on selected
beauty items



STACK UP THE SAVINGS MAKEUP SALE up to 65% off



STACK UP THE SAVINGS MAKEUP SALE

Featured shade:
fmg Glimmer Multi Eyeshadow Quad
in Darling.



up to 65% off

fmg Glimmer Multi Eyeshadow Quad
Soft powder formula lasts all day. No messy fallout.
Buildable coverage. Mix of satin, matte and shimmer finishes.
Formulated without parabens and fragrance.
.21 oz. total net wt. reg. \$15

NOW \$8.99



For Multi Quad
finishes, visit Avon.com.

It's flirt season & all eyes are on you

NEW

fmg LOVE at 1st Sight Eyeshadow Palette

Nine buildable matte and shimmer shades create depth and dimension. Versatile formula with antioxidant vitamin E blends seamlessly. Formulated without parabens, phthalates, talc and fragrance. .23 oz. total net wt.

786-076 reg. \$28

\$20



STACK UP THE SAVINGS MAKEUP SALE
up to 65% off



fmg Cashmere Eyeshadow Palette

Long-wearing formula with crease-resistant wear. Satin, matte and sparkling finishes. Formulated without parabens, talc and fragrance. .63 oz. total net wt. reg. \$40

NOW \$24.49



fmg CathyCat Shadow Gaze Matte Color Stick

Long-wearing formula will not budge or smudge. Buildable and blendable coverage. Matte finish. Formulated without parabens and fragrance. .0476 oz. net wt. reg. \$19

NOW \$6.49



fmg CathyCat Nine Lives Precision Liquid Eyeliner

Slim-tip brush delivers a precise line of water- and sweat-resistant color that will not skip, tug or smudge. Formulated without parabens, sulfates, phthalates and talc. .068 fl. oz.

Blackest Black 800-829 reg. \$18

NOW \$6.49



fmg Glimmer Matte Eyeshadow Quad

Soft powder formula lasts all day. No messy fallout. Buildable coverage. All matte finishes. Formulated without parabens and fragrance. .21 oz. total net wt. reg. \$15

NOW \$8.99



BACK BY POPULAR DEMAND

fmg Glimmer Liquid Eyeshadow Matte Sateen

Silky cream formula glides on effortlessly for a soft subtle sheen that lasts all day. Water-resistant. Will not smudge or crease. No messy fallout. Buildable coverage with matte sateen finish. Formulated without parabens, phthalates and sulfates. .07 fl. oz. reg. \$13

NOW \$7.49



fmg Glimmer Eyeliner

Long-wearing formula. Retractable. Formulated without parabens, sulfates and talc. Available in Diamond, Cream or Waterproof. .01 oz. net wt. reg. \$9

NOW \$2.99 each

DIAMOND

-  Sterling 331-960
-  Teal Sparkle 331-606
-  Olive 331-940
-  Black Ice 331-610
-  Twilight Sparkle 331-553
-  Sugar Plum 331-625
-  Purple Rain 332-071
-  Smoky Diamond 331-280
-  Brown Sugar 331-568

CREAM

-  Emerald Green 334-332
-  Starry Night 334-347
-  Saturn Grey 334-328
-  Majestic Plum 334-313
-  Cosmic Brown 334-351
-  Blackest Black 334-366

WATERPROOF

-  Seafoam Green 334-241
-  Smoky Grey 332-162
-  Blackest Night 229-491
-  Blue Skies 334-237
-  Raisin 332-200
-  Brown Chocolate 332-124
-  Midnight Blue 332-158

fmg Glimmer Brow Definer

Long-wearing formula with castor and coconut oils. Smudge-, transfer-, sweat- and waterproof. Retractable. Formulated without parabens, sulfates and talc. .01 oz. net wt. reg. \$9

NOW \$2.99

-  Light Blonde 331-109
-  Blonde 331-113
-  Tawny 331-128
-  Light Brown 331-151
-  Dark Brown 331-147
-  Brunette 331-242

fmg Glimmer Lipliner

Long-wearing creamy formula with vitamin E. Prevents feathering. Matte finish. Retractable. Formulated without parabens, sulfates and talc. .01 oz. net wt. reg. \$9

NOW \$2.99

-  Honey Peach 327-721
-  Lava Red 327-740
-  Passion Red 327-650
-  Red Brick 330-451
-  Mystery Mauve 330-538
-  Candy Apple 327-903
-  Pink Bouquet 330-356
-  Merlot 330-284
-  Au Naturel 330-318
-  Simply Spice 330-614
-  Chocolate 330-667
-  Perfect Plum 330-887



Featured shades: fmg Glimmer Cream Eyeliner in Cosmic Brown and Blackest Black.

fmg Glimmer Liquid Color Eyeliner Pen

Felt-tip applicator glides on smoothly and with precise application. Highly pigmented, lightweight formula. Smudge-, transfer- and sweat-proof.* Formulated without parabens, talc, mineral oil, phthalates and fragrance. .04 fl. oz. reg. \$13

NOW \$8.99

-  Chestnut 519-503
-  Indigo 519-499
-  Forest 519-518
-  Smoked 519-537

*Based on Consumer Home Use Test Study of 62 applicants.

fmg Glimmer Liquid Eyeliner

Quick-drying, long-lasting formula. Transfer-, sweat- and waterproof. Matte finish. Formulated without parabens, phthalates and fragrance. .037 fl. oz.

Blackest Black 354-380
reg. \$13

NOW \$7.49

fmg Glimmer Always On Point Eyeliner

Built-in sharpener. Smudge- and waterproof. Formulated without parabens, sulfates and talc. .01 oz. net wt. reg. \$10

NOW \$5.99

-  Black 016-389
-  Black Brown 016-446

**STACK UP THE SAVINGS
MAKEUP SALE**

up to 65% off



STACK UP THE SAVINGS
MAKEUP SALE
up to
65% off



**fmg Colors of LOVE
Hi-Brow Tinted Brow Gel**
24-hour water-resistant formula with heart-shaped fibers, clay and vitamin E. Won't clump, smudge or flake. Formulated without parabens, phthalates and fragrance. .11 fl. oz. reg. \$18

NOW \$10.49



Blonde 792-499
Soft Brown 792-522
Medium Brown 792-537
Brown Black 792-556



**fmg Cashmere
Eyelash Primer**
Nourishing formula keeps lashes looking healthy and strong with biotin and collagen. Maximizes the performance of any mascara for gorgeous, lush lashes. Formulated without parabens, sulfates and talc. .35 fl. oz. 324-369 reg. \$24

NOW \$15



**fmg Cashmere
Ultimate Volume Mascara**
Long-wearing formula with biotin and collagen. Glossy black finish. Won't budge, smudge or transfer. Formulated without parabens, sulfates and talc. .27 fl. oz. Rich Black 153-736 reg. \$23

NOW \$12.99



**fmg Colors of LOVE
Hi-Brow Sculpting Brow Gel**
Clear formula with aloe and hyaluronic acid. Flake-proof. Formulated without parabens, phthalates and fragrance. .11 fl. oz. 536-695 reg. \$18

NOW \$10.49



**fmg Glimmer
SuperShock
Volumizing Mascara**
Lash-building formula with plumping fibers. High-gloss finish. Won't clump, smudge or flake. Formulated without phthalates and fragrance. .338 fl. oz. Black 698-829 reg. \$13

NOW \$7.49



**fmg LOVE at 1st Lash
Waterproof Mascara**
Lash-loving, waterproof formula with volumizing and lengthening fibers. With Lashrez, olive oil and vitamin E. Won't clump, smudge or flake. Formulated without parabens and sulfates. .29 fl. oz. Blackest Black 480-953 reg. \$18

NOW \$10.49



**fmg LOVE at 1st Lash
Mascara**
Lash-loving volumizing and lengthening fibers. With lycopene, olive oil and vitamin E. Won't clump, smudge or flake. Formulated without parabens and sulfates. .3 fl. oz. Blackest Black 698-670 reg. \$18

NOW \$10.49



**fmg Glimmer
SuperExtend
Nourishing Mascara**
Long-wearing lengthening formula with vitamin E, argan and coconut oils. Won't clump, smudge or flake. Formulated without sulfates and talc. .237 fl. oz. Black 698-848 Brown Black 698-852 reg. \$13

NOW \$7.49



**fmg Glimmer
Wash-Off Waterproof
Mascara**
Waterproof volume. Washes off easily with soap and water. Formulated without phthalates and fragrance. .21 oz. net wt. Black 723-107 reg. \$12

NOW \$6.49



STACK UP THE SAVINGS
MAKEUP SALE
up to 65% off



new shades

SHIMMER
Carnation Constellation 042-897

SATIN
AstroNautical Blue 042-878

SATIN
Magenta Retrograde 042-882

SATIN
Supernova Red 018-267

SATIN
Lunar Tan 602-753

SATIN
Black Hole Burgundy 018-286

SATIN
Full Moon Flush 018-730

SATIN
Night Sky Berry 602-658

SATIN
Cool Comet 602-830

SATIN
High Magnitude Mauve 018-840

METALLIC
Meteorite Rose 019-369

METALLIC
Golden Galaxy 019-354

SHIMMER
Lost Galaxy Plum 598-911

fmg Glimmer Nail Lacquer
Nail-strengthening, long-wearing, no-chip formula. Gel-like cushion texture. Formulated without parabens and phthalates. .4 fl. oz. reg. \$12
NOW \$5.99 each

LIMITED EDITION
fmg Glimmer Glitz A-Peel Nail Lacquer
Glittery quick-dry formula. No harsh acetone or remover needed. Glossy finish. Formulated without parabens, toluene, formaldehyde and camphor. .4 fl. oz. reg. \$13
NOW \$6.99

Leading Lady 538-430

Best in Class 538-459

Newlywed 538-425



just "peels" off
for fuss-free
removal.



fmg Glimmer Nourished Nail Cuticle Oil
Nourishing treatment for dry, damaged cuticles. Fortified with safflower oil to help restore and condition nails and cuticles. Formulated without phthalates, sulfates, parabens, toluene, formaldehyde and camphor. .4 fl. oz. 612-894 reg. \$13
NOW \$8.99



fmg Glimmer Nail Base & Top Coat
Two-in-one base and top coat primes and shields nails. Glossy finish. Formulated without parabens and phthalates. .4 fl. oz. 018-161 reg. \$12
NOW \$5.99



fmg Glimmer Nail Air Dry Drops
Need a fast finish? Accelerate your dry time with just a drop or two! Helps prevent smudges and nicks. Formulated without phthalates, sulfates, parabens, toluene, formaldehyde and camphor. .4 fl. oz. 612-913 reg. \$13
NOW \$8.99



fmg Glimmer Nail Lacquer Eraser Pen
For a clean and perfected mani. Won't dry out nails or cuticles. Formulated without parabens and phthalates. .135 fl. oz. 704-443 reg. \$12
NOW \$5.99





fmg Glimmer Matte Lipstick
 Vivid color. Velvety feel. Featherlight non-drying formula with pomegranate extract. Buildable medium-to-full coverage. Matte finish. Formulated without parabens, talc, sulfates and phthalates. .10 oz. net wt. reg. \$12
NOW \$5.99



Featured shade: Chili.

- 
 Sunset Mauve
171-360
- 
 Terra Nova
171-340
- 
 Garnet Sky
171-393
- 
 Wild Orchid
171-431
- 
 Willow
171-450
- 
 Chili
171-355



fmg Glimmer Satin Lipstick
 Lightweight creamy formula with pomegranate extract. Buildable coverage. Satin finish. Formulated without parabens and sulfates. .10 oz. net wt. reg. \$12
NOW \$5.99

- | | | |
|--|---|---|
| 
Wild Cherry
449-708 | 
Blaze
896-880 | 
Constellation (Shimmer)
449-731 |
| 
Poppy
897-651 | 
Aster
448-769 | 
Desert Moon
449-803 |
| 
Twilight
449-822 | 
Cyclone
890-566 | 
Sierra Sunset
890-805 |
| 
Plum Blossom
449-765 | 
Dahlia
726-350 | 
Rose Angel
897-939 |
| 
Wildflower
898-040 | 
Eclipse
448-740 | 
Tulip
449-712 |
| 
Violet Night
898-548 | 
Stellar
726-550 | 
Honeyflower
726-531 |
| 
Windstorm
883-845 | 
Equinox
449-818 | 
Luna
895-170 |
| 
Wildrose
898-533 | 
Aurora
726-584 | 
Hibiscus
898-021 |
| 
Celestial
895-352 | 
Morning Glory
449-750 | |



STACK UP THE SAVINGS
 MAKEUP SALE
 up to
 65% off



Featured shade: Blaze.



NEW

GO. by Glimmer Lacquered Lip Gel

Ultimate fusion of shiny gloss and tinted lip color in one. Non-sticky formula with gel-like texture glides on and helps to leave lips feeling soft and cushioned. Infused with a Super-Fruit Extract Complex that includes noni fruit, passionflower and amla fruit extract. Buildable coverage with a glossy finish. Formulated without parabens, talc, sulfates, phthalates and mineral oil. .14 oz. net wt. reg. \$17

\$12.99



NEW

GO. by Glimmer Whipped Lip & Cheek Tint
 Ultimate multi-tasker delivers beautiful color to lips and cheeks. With apple fruit extract, an antioxidant known to help promote smooth, glowing skin. Full pigmented coverage with a velvety matte powder finish. Formulated without parabens, talc, sulfates, phthalates and mineral oil. .14 oz. net wt. reg. \$18

\$13.99



STACK UP THE SAVINGS MAKEUP SALE

up to 65% off

**fmg Glimmer
Birthday Balm Lip Crayon**
Sheer, soft shine formula
with non-GMO shea butter.
Formulated without
parabens and gluten.
.1 oz. net wt.
reg. \$15

NOW \$8.99 each

Featured shades
(top to bottom):

- | | |
|---|---|
|  |  |
| Lovin' Life
698-867 | PYT
375-691 |
|  |  |
| Cupcake
950-000 | Surprise!
375-710 |
|  |  |
| Birthday Suit
375-706 | Private Party
949-990 |
|  |  |
| Glammed
Up 953-268 | VIP
951-265 |
|  |  |
| Fine Wine
375-725 | Birthday Post
375-730 |



STACK UP THE SAVINGS MAKEUP SALE
up to 65% off

**TPSY
Forever Lip Marker**
Vibrant long-wearing
formula with castor and
sunflower oils. Matte
finish. Formulated
without parabens,
sulfates and phthalates.
.08 fl. oz. reg. \$17
NOW \$9.49



- | | | | | |
|---|---|---|---|---|
|  |  |  |  |  |
| Cherry Crush
481-400 | Pink Fizz
481-706 | Plum Jam
481-873 | Felt Pink
495-240 | Sour Candy
495-254 |

**TPSY
Drunk Shiny Lip Oil**
Glossy formula with
jojoba, argan and castor
oils. Formulated without
parabens, sulfates,
phthalates and talc.
.13 oz. net wt.
reg. \$17
NOW \$9.49



- | | |
|---|---|
|  |  |
| Love Galore
495-197 | My Boo
495-216 |

**fmg Glimmer
Lip Conditioner**
Leaves dry, cracked
lips feeling soft and
smooth. With mango
seed butter, vitamin
E, and jojoba and
sunflower seed oils.
Formulated without
parabens, sulfates,
phthalates and talc.
.12 oz. net wt.
794-578 reg. \$12
NOW \$5.99



fmg LOVE Lip Butter
Sheer, high-shine formula
with cupuaçu seed butter,
mango extract, and apricot
kernel and olive fruit oils.
Buildable coverage.
Formulated without
parabens, sulfates and
phthalates. .09 oz. net wt.
reg. \$18
NOW \$10.49



- | | | | | | |
|---|---|---|---|---|---|
|  |  |  |  |  |  |
| Love Affair
063-242 | Pucker Up
063-128 | Tease
063-132 | Secret Crush
063-147 | Rendezvous
063-166 | Flirtatious
063-219 |

Featured shade: Love Affair.



Featured shade:
fmg Glimmer
Be Blushed Cheek Color
in Tropical Peach.

STACK UP THE SAVINGS MAKEUP SALE
up to 65% off

fmg Glimmer Be Blushed Cheek Color
Creamy formula with vitamin E. Buildable coverage. Dewy finish. Formulated without parabens, phthalates and fragrance. .14 oz. net wt. reg. \$15

NOW \$8.99

-  Icy Petal
022-854
-  Blushing Nude
022-911
-  Tropical Peach
022-964
-  Golden Rose
022-840
-  Crushed Berry
022-945



fmg Glimmer Powder Blush
Weightless formula with ultrafine pearl and vitamin E. Buildable coverage. Matte finish. Formulated without parabens, phthalates and fragrance. .28 oz. net wt. reg. \$14

NOW \$7.99

-  Petal Pink
618-209
-  Pink Passion
618-213

fmg Glimmer Powder Illuminator
Lightweight buildable formula with vitamin E. Radiant finish. Formulated without parabens, phthalates and fragrance. .35 oz. net wt. reg. \$14

NOW \$7.99

-  Rosé
463-628
-  Prosecco
905-580

fmg Glimmer Lip & Cheek Stain
Highly pigmented, long-wearing gel formula. Brush-tip applicator. Transfer-proof. Formulated without parabens and fragrance. .19 fl. oz. reg. \$17

NOW \$9.49

-  Plumeria
628-851
-  Rosette
628-832



fmg Colors of LOVE Glow Balm Duo Illuminating Stick
Sheer formula with blend of pomegranate extract, mango and shea butter, vitamins E and C, and avocado oil. Soft, pearlescent finish. Formulated without parabens, phthalates and fragrance. .28 oz. total net wt. 924-573 reg. \$22

NOW \$10.99





way to glow

Silky, liquid pearl formula with a soft-filter effect and hint of tint in sheer, flexible shades.

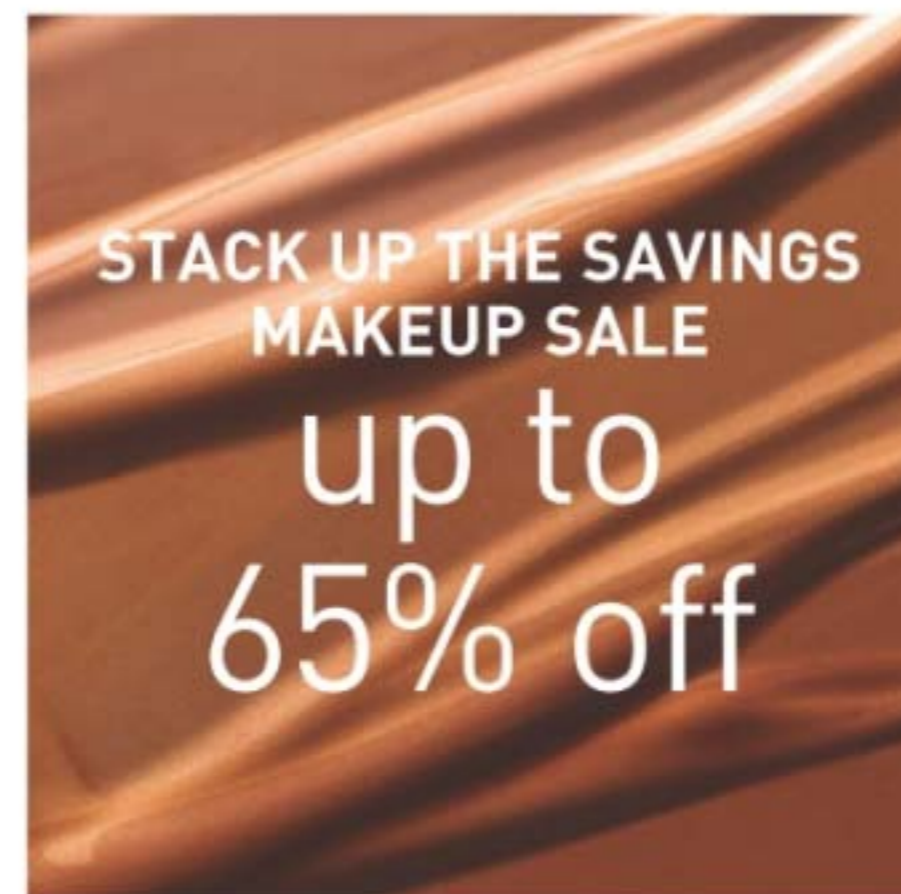
fmg Match Airbrush Retouch Tinted Primer

Helps soothe and even skin tone, and provides a lit-from-within dewy complexion. With skin-caring ferulic acid, panthenol (provitamin B5) and niacinamide. Formulated without parabens, phthalates, fragrance and talc. 1 fl. oz. reg. \$21

NOW \$13.99



- Fair Light 816-456
- Light Medium 816-494
- Medium Deep 822-424
- Tan Deep 822-439



fmg Match Tint Radiant Tinted Moisturizer

Brightens skin tone, boosts moisture and blurs flaws. With passion fruit, chia and sunflower seed oils, and vitamin E and provitamin B5. Buildable coverage. Radiant finish. Formulated without parabens. 1 fl. oz. reg. \$15

NOW \$8.99

- Medium 368-397
- Medium Deep 368-416
- Tan Deep 368-420
- Deep 368-454



fmg Match Prime Face Perfector

Flaw-blurring, mattifying oil-free formula visibly minimizes pores and fine lines. Sheer coverage. Matte finish. Formulated without parabens. 1 fl. oz. 103-744 reg. \$18

NOW \$10.49



fmg Match Filter Serum Tint Foundation

Instantly hydrates, blurs flaws and evens tone. With hyaluronic acid, vitamin E and berry complex. Buildable coverage. Demi-matte finish. Formulated without talc, parabens and fragrance. .31 oz. net wt. reg. \$21

NOW \$11.99

- Fair 932-491
- Fair Light 932-620
- Light 932-640
- Light Medium 932-654
- Soft Medium 932-783
- Medium 932-836
- Medium Deep 933-153
- Tan Deep 933-168
- Deep 933-172

fmg Match Wand Correcting Stick

Neutralizes unevenness, brightens and color corrects. Long-wearing formula with shea butter and vitamin E. Formulated without parabens, phthalates and sulfates. .21 oz. net wt. reg. \$18

NOW \$8.99

- Sherbet: neutralizes dark circles and marks 726-790
- Gelato: brightens dullness 726-785
- Pistachio: neutralizes redness 726-770










STACK UP THE SAVINGS MAKEUP SALE
up to 65% off

fmg Cashmere Cream Concealer

Long-wearing formula helps to camouflage dark circles, acne and uneven skin tone. With hyaluronic acid and collagen. Full-coverage. Matte finish. Formulated without parabens, phthalates, talc and fragrance. .21 oz. net wt. reg. \$17

NOW \$9.49

- 
 Fair Neutral
359-028
- 
 Light Cool
359-396
- 
 Medium Neutral
359-434
- 
 Medium Tan Warm
359-640
- 
 Tan Neutral
359-931



Featured shade:
fmg Cashmere Cream Concealer
in Medium Neutral.

fmg Cashmere Compact Powder Foundation*

Shine-control formula can be used wet or dry. Buildable medium-to-full coverage. Matte finish. With antioxidant botanicals. Sponge applicator. Formulated without parabens, phthalates and sulfates.

.40 oz. net wt. reg. \$36

NOW \$22.49



- | | | | | | |
|--|--|--|--|--|--|
| 
N110
722-976 | 
W110
111-294 | 
W120
723-040 | 
C110
111-313 | 
N120
111-370 | |
| 
W130
723-073 | 
W140
723-130 | 
W150
723-088 | 
W160
111-533 | 
N130
111-548 | 
N150
111-658 |

fmg Cashmere 24 Hour Concealer*

24 hours of comfortable, breathable wear. Full coverage. Soft-focus matte finish. Visibly corrects dark circles and imperfections. With antioxidant botanical extracts. Water-resistant. Doe-foot applicator. Formulated without parabens, phthalates and sulfates. .20 fl. oz. reg. \$22

NOW \$11.99


















- | | | | | |
|--|--|---|--|--|
| 
Cheesecake (C)
252-962 | 
Macaroon (N)
253-060 | 
Tart (WO)
115-012 | 
Biscuit (WO)
116-650 | 
Toffee (W)
123-662 |
|--|--|---|--|--|

fmg Cashmere 24 Hour Foundation*

24 hours of comfortable, breathable wear. Full, flexible coverage. Soft-focus matte finish. Visibly blurs pores and fine lines for a smoother complexion. With antioxidant botanical extracts. Water-resistant. Doe-foot applicator. Formulated without parabens, phthalates and sulfates. 1 fl. oz. reg. \$32

NOW \$17.99

- | | | | | |
|---|--|--|---|---|
| 
Cannoli (W)
017-347 | 
Nougat (W)
126-107 | 
Meringue (W)
017-500 | 
Shortcake (C)
018-970 | 
Buttercream (N)
019-134 |
| 
Marshmallow (N)
131-849 | 
Custard (N)
019-172 | 
Strudel (C)
019-225 | 
Macadamia (W)
019-450 | 
Soufflé (N)
139-730 |
| 
Gingerbread (C)
142-311 | 
Amaretto (N)
146-188 | 
Latte (W)
147-480 | 
Brownie (WO)
147-461 | 
Hazelnut (W)
147-495 |
| 
Cognac (W)
147-681 | 
Pecan (N)
149-699 | 
Java (W)
149-722 | 
Truffle (C)
150-263 | |



*Available in Cool (C), Neutral (N), Warm (W) and Warm Olive (WO) undertones.

STACK UP THE SAVINGS
MAKEUP SALE

up to
65% off



**fmg Cashmere
Multi-Peptide Eyeshadow Primer**
Keeps eyeshadow in place and intensifies the color. Skin-loving ingredients help to reduce the appearance of fine lines and visibly plump and strengthen the skin barrier. Sheer formula with Matrixyl 3000 peptide blend, hyaluronic acid, collagen and panthenol. Formulated without parabens and talc. .31 oz. net wt. **906-385** reg. \$23
NOW \$13.49



**fmg Cashmere
Under Eye Primer**
Helps diminish the look of dark circles and fine lines. With caffeine, green tea extract and vegan collagen. Formulated without parabens, phthalates and fragrance. .317 oz. net wt. **010-429** reg. \$24
NOW \$13.99



**fmg Cashmere
Multi-Peptide Face Primer**
Preps skin. Revitalizing ingredients help to smooth the appearance of fine lines and pores and visibly plump and strengthen the skin barrier. Sheer gel formula with Matrixyl 3000 peptide blend, hyaluronic acid, collagen and niacinamide. Formulated without parabens, talc and fragrance. 1 fl. oz. **739-284** reg. \$23
NOW \$13.49



**fmg GLOKOLOR
Hybrid Face Primer**
Softens the appearance of imperfections. With aloe vera, agave and algae extracts. Formulated without parabens and sulfates. 1 fl. oz. **787-637** reg. \$25
NOW \$14.99

**fmg GLOKOLOR
Hybrid Face Mist**
Instant boost of moisture to refresh skin. With aloe vera, agave and algae extracts. Formulated without parabens and sulfates. 2.7 fl. oz. **787-599** reg. \$25
NOW \$14.99

**fmg GLOKOLOR
Lip Serum Pencil**
Refreshes and smooths lips. With peppermint and argan oils. Formulated without parabens and fragrance. .06 oz. net wt. **787-508** reg. \$20
NOW \$11.99

fmg Complexion Blending Brush
Dual-ended: Rounded buffing foundation brush and concealer brush. 6½" L. Synthetic bristles. 933-210 reg. \$23

NOW \$13.49

fmg Precision Eye Brush
Dual-ended: Pointed pencil brush and angled eyeliner brush. 5¼" L. Synthetic bristles. 933-187 reg. \$15

NOW \$8.99

fmg Eyeshadow Blending Brush
Dual-ended: Crease brush and all-over eyeshadow brush. 6" L. Synthetic bristles. 933-320 reg. \$15

NOW \$8.99

fmg Blush & Contour Brush
Dual-ended: Angled contour brush and tapered, oval blush brush. 7¼" L. Synthetic bristles. 933-259 reg. \$22

NOW \$12.49



STACK UP THE SAVINGS MAKEUP SALE
up to 65% off



fmg Oil Rewind Roller Ball
Reusable 360° rotating volcanic-stone roller instantly absorbs oil and grease without disturbing makeup. 3" L x 1" W. Plastic handle, protective cap. Imported. 508-294 reg. \$18

NOW \$5.99



fmg Set & Fix Spray
Controls oil and helps keep makeup smudge-proof. Non-greasy, non-sticky. Formulated without parabens, sulfates, phthalates and silicones. 1.7 fl. oz. 416-707 reg. \$15

NOW \$4.99



fmg Express Makeup Brush Wash
Easily removes dirt, oil and makeup. With aloe vera and green tea extract. Formulated without alcohol and sulfates. 1 fl. oz. 141-368 reg. \$14

NOW \$7.99



fmg Flawless Complexion Sponge
Dual-ended: All-over makeup application rounded end, and contouring and concealing flat end. 2½" L x 1½" W. 100% PU, latex-free. 140-160 reg. \$10

NOW \$5.99



fmg Kabuki Brush
Soft, angled brush for pressed or loose powder formulas. Retractable with protective cap. 3¼" L x 1" diam. Synthetic bristles. 732-370 reg. \$19

NOW \$11.49



Daily Beauty Tools Tweezers
Amp up your beauty routine with angled tweezers. Stainless steel. 3½" L. 747-020 reg. \$4

NOW \$2.49



fmg Makeup Remover Wipes
With vitamin E and aloe, chamomile, cucumber, marshmallow root and oat extracts. Resealable pack of 24 wipes. Formulated without parabens, gluten, sulfates, phthalates and fragrance. 333-867 reg. \$10

NOW \$5.99



fmg Vanity Organizer
Four compartments with two removable inside dividers, three outer pockets and lattice elastic straps. Folds for easy storage. 9½" L x 6" W x 5" H. Polyester. Imported. 022-816 reg. \$30

NOW \$17.99



fmg Waterproof Lip & Eye Makeup Remover
Dual-layer oil and water remover leaves skin fresh and clean. With ether, silicone, hydrocarbon and ester oils. Formulated without mineral oil, tar, talc and parabens. 3.7 fl. oz. 352-243 reg. \$12

NOW \$3.99



fmg Moisturizing Eye Makeup Remover Lotion
Cleans, refreshes and moisturizes as it whisks away eye makeup. Formulated without parabens, sulfates and phthalates. 2.5 fl. oz. 037-978 reg. \$8

NOW \$4.49



fmg Unready Makeup Remover Cloth
Dual-sided. Reusable and travel-friendly. 100% polyester. 9½" sq. Machine wash and dry. Imported. 230-176 reg. \$14

NOW \$4.49

FRAGRANCE

From alluring eau de parfums to spirited colognes, fresh florals to woody notes, each scent in our collection lets you express yourself.

All-Day Bliss

NEW

LIMITED EDITION

Far Away Escape Diffuser Tile Gift Set

Journey to the glistening beaches of faraway islands with notes of sweet Anjou pear, exotic gardenia flower and warm cashmere wood. Hang or place the scented tile in your preferred location, such as a drawer, closet, cabinet, car or anywhere you desire a pleasant aroma.

Gift Set includes:

- Far Away Escape Mini Eau de Parfum, .13 fl. oz.
- Embossed diffuser tile, clay, approx. 2 1/8" H x 2 1/8" W.
- Decorative ribbon, polyester.

612-660 reg. \$24

\$18.99



fruity floral

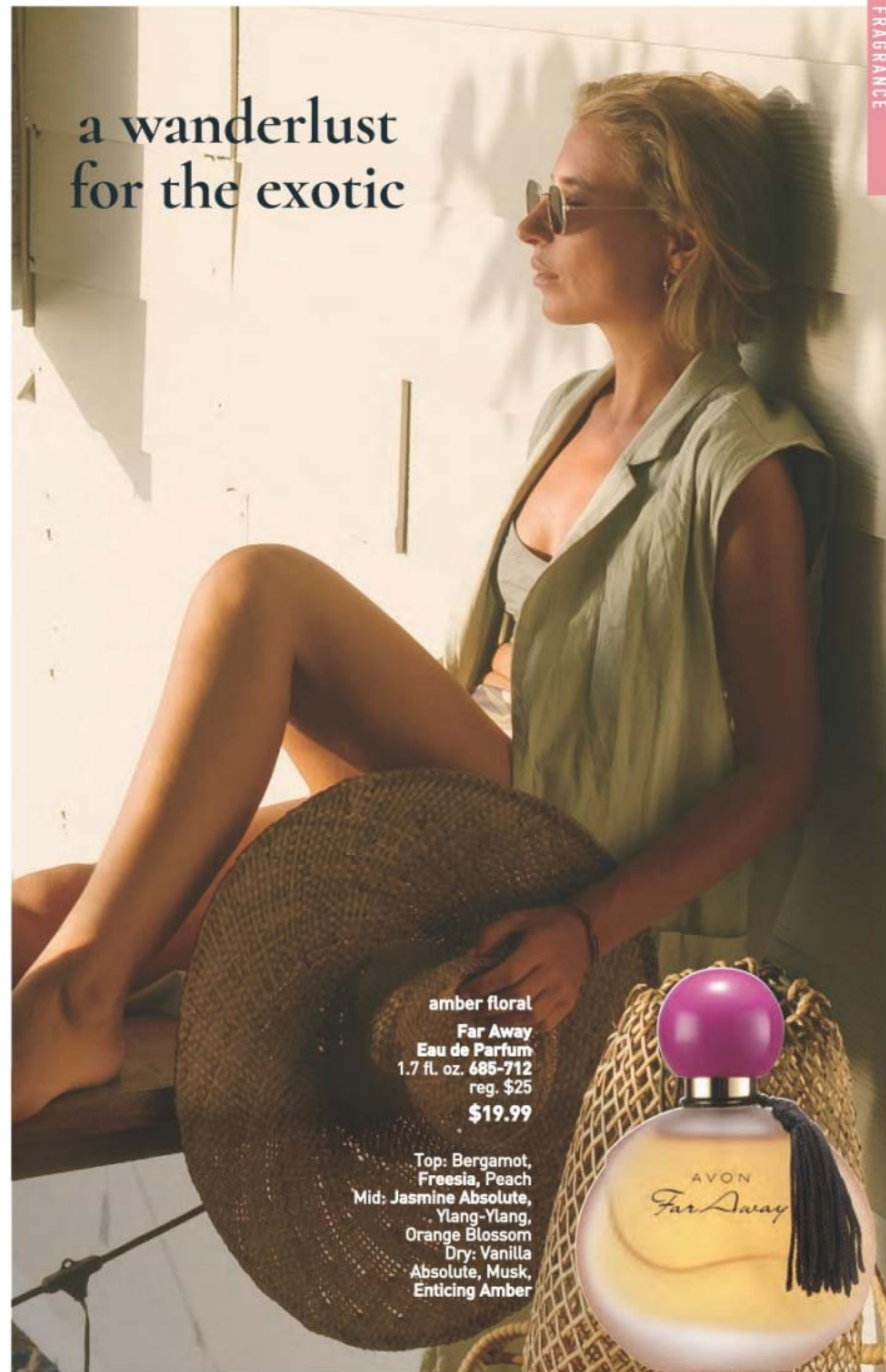
Far Away Bali Eau de Parfum
Grapefruit, salted tuberose and
amber. 1.7 fl. oz. 451-389
reg. \$25

\$10.99

LOWEST PRICE THIS YEAR



a wanderlust
for the exotic



amber floral

**Far Away
Eau de Parfum**
1.7 fl. oz. 685-712
reg. \$25

\$19.99

Top: Bergamot,
Freesia, Peach
Mid: Jasmine Absolute,
Ylang-Ylang,
Orange Blossom
Dry: Vanilla
Absolute, Musk,
Enticing Amber



fruity floral

Far Away Infinity Eau de Parfum
Bergamot, jasmine sambac and
sandalwood. 1.7 fl. oz. 318-481
reg. \$25

\$19.99



amber floral

Far Away Gold Eau de Parfum
Ylang-ylang, jasmine and vanilla.
1.7 fl. oz. 685-727
reg. \$25

\$19.99

illuminate your life



fresh green floral

**Haiku Kyoto Flower
Eau de Parfum**Violet leaf, white peony and cotton
musk. 1.7 fl. oz. **144-352** reg. \$25**\$19.99**

fresh green floral

Haiku Reflection Eau de ParfumWater accord, acacia blossom and
amber wood. 1.7 fl. oz. **617-657**
reg. \$25**\$19.99**

fresh green floral

Haiku Eau de ParfumYuzu, muguet and
blonde woods. 1.7 fl. oz.
521-170 reg. \$25**\$19.99**

woody floral

Haiku Sunrise Eau de Parfum

1.7 fl. oz.

091-500

reg. \$25

NOW \$14.99

Top: Wild Fig, Watermelon,
Madagascar Black Pepper
Mid: Fresh Coconut Water,
Sweet Rhubarb, Marine Accord
Dry: Warm Cedarwood,
Cashmere Wood, Amber



woody floral

Imari Amor Eau de Parfum
Black currant, orris and warm musk.
1.7 fl. oz. 762-573 reg. \$25
\$19.99



amber floral

Imari Seduction Eau de Toilette
Wild berries, purple orchid and patchouli.
1.7 fl. oz. 452-897 reg. \$25
\$19.99



soft floral
**Rare Pearls
Eau de Parfum**
Magnolia, white pepper
and rosewood.
1.7 fl. oz. 761-615
reg. \$25
\$19.99

embrace your desire

amber floral

Imari Eau de Toilette
Bergamot, jasmine and
amber. 1.7 fl. oz. 871-496
reg. \$25
\$19.99



amber floral

Rare Gold Eau de Parfum
Mandarin zest, ylang-ylang and amber.
1.7 fl. oz. 933-115 reg. \$25
\$19.99



fruity floral

Rare Amethyst Eau de Parfum
Plum, violet and sandalwood.
1.7 fl. oz. 933-062 reg. \$25
\$19.99



fruity floral

Live Out Loud #4U
Eau de Parfum
Mandarin, peach blossom
and vanilla. 1.7 fl. oz.
735-968 reg. \$40
NOW \$22.49



fruity floral

Live Out Loud
Eau de Parfum
Strawberry, mimosa and
vanilla. 1.7 fl. oz. 142-000
reg. \$40
\$30



soft floral

Today Eau de Parfum
Magnolia blossoms, hibiscus
petals and silk musk.
1.7 fl. oz. 490-855
reg. \$40
\$30

**IT'S YOUR LIFE,
SHINE
RADIANTLY.**

fruity floral

Live Out Loud Solar Vibes
Eau de Parfum
Bergamot, coconut water and
fluffy marshmallow. 1.7 fl. oz.
835-822 reg. \$40
NOW \$22.49



amber floral

LYRD Vanilla Rose
Eau de Parfum
Dewy roses, comforting
vanilla and cedarwood.
1.7 fl. oz. 094-020
reg. \$42
\$35



LYRD Vanilla Rose
Travel Spray
.3 fl. oz. 505-128
reg. \$19
NOW \$10.99



LYRD Sultry Orchid
Travel Spray
.3 fl. oz. 612-799
reg. \$19
\$14.99



amber floral

LYRD Sultry Orchid Eau de Parfum
Pink saffron, red orchid and warm
amber. 1.7 fl. oz. 892-960 reg. \$42
\$35

it's your time to bloom

soft floral

LYRD Honeysuckle Blossom Eau de Parfum
Apple blossom, honeysuckle nectar and vanilla orchid. 1.7 fl. oz. 167-270 reg. \$30

\$24



LYRD Honeysuckle Blossom Hair and Body Mist*

Lightweight formula envelops you in a soft cocoon of scent with notes of apple blossom, honeysuckle nectar and vanilla orchid. Leaves hair with a subtle, healthy-looking shine. 3.25 fl. oz. 167-231 reg. \$19

\$14.99



LYRD Peony Rosé Hair and Body Mist*

Soft floral. Lightweight formula envelops you in a soft cocoon of scent with notes of peony petals, pink currant and sheer musk. Leaves hair with a subtle, healthy-looking shine. 3.25 fl. oz. 167-212 reg. \$19

\$14.99



fresh green floral

LYRD Coastal Lotus Eau de Parfum

Sparkling mandarin, island gardenia and lotus flower. 1.7 fl. oz. 869-906 reg. \$42

\$35

*Packaging may vary.

meet me by the fire



Unique wooden wick design gives a clean, even burn.

NEW

LIMITED EDITION

❖ LYRD Bonfire Wooden Wick Candle

The sound of crackling wood evokes memories of cool nights with friends. Reminisce with notes of earthy oakmoss, salty beach wood and fiery amber. 11 oz. candle gives 28 hours of burn time. 4 1/4" diam. x 3 1/2" H. Wooden wick, glass jar, soy-blend wax. Assembled in USA. 765-625 reg. \$25

\$19.99

Never leave burning candles unattended. Keep away from children and pets.

AVON MOMENTS

A provocative fragrance collection that evokes the powerful allure of unforgettable memories sweetened with the hopeful anticipation for a moment yet to be written.



Avon Moments Body Wash
Richly lathering formula leaves skin feeling cleansed and beautifully scented.
Each, 7.7 fl. oz.
Remember That Night 196-768
Out On A Limb 196-442
Day Dreamer 196-844
reg. \$17
\$12.99 \$9.49 each

amber floral

Out On A Limb Eau de Toilette

Believe in yourself. Take that leap of faith and go for bold with daring notes that unleash your spirit.
1.7 fl. oz. **196-112**
reg. \$32

\$24.99 \$18.49

Top: Spicy Cardamom, Leaf Green, Violet, Lilac
Mid: Jasmine, Honey Mimosa Flower, Freesia, Muguet
Dry: Tonka Bean, Musk, Powdery Vanilla

amber floral

Remember That Night Eau de Toilette

It was the best night of your life! Memories come flooding back with each seductive note. 1.7 fl. oz.
196-662 reg. \$32

\$24.99 \$18.49

Top: Bergamot, Sparkling Grapefruit, Orange, Pear
Mid: Opulent Jasmine, Neroli
Dry: Seductive Amber, Musk, Vanilla

fruity floral

Day Dreamer Eau de Toilette

It's a beautiful day for a daydream. Explore your wildest fantasies with imaginative notes that bask in sweet reverie.
1.7 fl. oz. **196-772**
reg. \$32

\$24.99 \$18.49

Top: Quince, Grapefruit, Apple
Mid: Jasmine, Dewy Iris, Muguet, Freesia
Dry: Soft Musk, Amber, Cedarwood, Sandalwood

every
MOMENT
tells a story



GET AN EXTRA

25% OFF Final prices as shown.

layering essentials



Far Away Body Scrub & Wash
6.7 fl. oz.
143-360
reg. \$15
NOW \$7.99



Far Away Hair and Body Mist
3.25 fl. oz.
572-536
reg. \$18
NOW \$10.99



Far Away Body Lotion
6.7 fl. oz.
082-881
reg. \$13
\$9.99



Haiku Hair and Body Mist
3.25 fl. oz. 572-574
reg. \$18
NOW \$10.99



Haiku Hand Cream
2.5 fl. oz. 364-808 reg. \$8
\$5.99



Rare Pearls Hand Cream
2.5 fl. oz.
364-827
reg. \$8
\$5.99



Far Away Hand Cream
2.5 fl. oz.
364-850
reg. \$8
\$5.99



Haiku Body Lotion
6.7 fl. oz. 447-820
reg. \$13
\$9.99



Haiku Body Scrub & Wash
6.7 fl. oz.
143-208
reg. \$15
NOW \$7.99



Rare Pearls Body Lotion
6.7 fl. oz.
082-915
reg. \$13
NOW \$7.49



Rare Pearls Hair and Body Mist
3.25 fl. oz.
572-851
reg. \$18
NOW \$10.99



BACK BY POPULAR DEMAND!

soft floral

Soft Musk Cologne

Peach blossom, blonde woods and sheer musk. 1.7 fl. oz. **787-790** reg. \$19

\$14.99



soft floral

Dreamlife Cologne

Mimosa flower, rose and amber. 1.7 fl. oz. **236-227** reg. \$19

NOW \$10.99



woody floral

Night Magic Cologne

Neroli, jasmine and musk. 1.7 fl. oz. **439-495** reg. \$19

\$14.99

scented softness

Perfumed Skin Softener
Moisturizing formula leaves skin soft and scented. Each, 5 fl. oz. reg. \$7

\$4.99

Candid 739-160
Odyssey 739-762
Imari 738-751
Haiku 738-694

Timeless 739-155
Sweet Honesty 740-246
Night Magic 738-766
Far Away 049-246



amber floral

Candid Cologne

Bergamot, tuberose and patchouli. 1.7 fl. oz. **038-295** reg. \$19

\$14.99



soft floral

Odyssey Cologne

Tuberose, ylang-ylang and oakmoss. 1.7 fl. oz. **900-391** reg. \$19

\$14.99



soft floral

Sweet Honesty Cologne

Lily of the valley, rose and cedarwood. 1.7 fl. oz. **901-861** reg. \$19

\$14.99



soft floral

Timeless Cologne

Cardamom, jasmine and patchouli. 1.7 fl. oz. **037-930** reg. \$19

\$14.99



soft floral

Topaze Cologne

Jasmine, rose and sheer musk. 1.7 fl. oz. **735-217** reg. \$19

\$14.99



fresh green floral

Free O₂ Eau de Toilette

White peach tea, honeysuckle and musk. 1.7 fl. oz. **490-840** reg. \$19

\$14.99



ANY TWO FOR \$7

mix or match, any two for discount to apply, page 45.



fresh aromatic
Mesmerize Cologne
 Bergamot, cardamom and amber.
 3.4 fl. oz. 871-458 reg. \$30
\$22.99



woody fougère
Mesmerize Black Eau de Toilette
 Pepper, nutmeg and tonka bean. 3.4 fl. oz.
 305-667 reg. \$30
\$22.99

lead with confidence

BACK BY
 POPULAR DEMAND!

fresh aromatic

Alpha Eau de Toilette
 Verbena, cardamom and cedarwood. 3.4 fl. oz.
 088-598 reg. \$35
\$26.99



woody fougère
Studio 1886 Gentleman Eau de Toilette
 Geranium, black pepper and cedarwood.
 1.7 fl. oz. 708-750 reg. \$50
\$39

Studio 1886 Gentleman Aftershave Lotion
 6.7 fl. oz. 708-927 reg. \$24
NOW \$13.49



fresh aromatic
Perceive Cologne
 Citrus, sage and cedarwood.
 3.4 fl. oz. 194-550 reg. \$30
\$22.99





fresh aromatic
Wild Country Cologne
 Lavender, coriander seed and
 sandalwood. 3 fl. oz. 086-466 reg. \$24
\$17.99
 Packaging may vary.



**Wild Country
 Aftershave Splash**
 4 fl. oz. 366-432
 reg. \$16
\$12.99



**Wild Country
 Hair & Body Wash**
 5 fl. oz. 215-188
 reg. \$8
\$5.99



**Wild Country
 Bar Soap**
 3.17 oz. net wt.
 495-570
 reg. \$6
NOW \$2.99



cause a stir

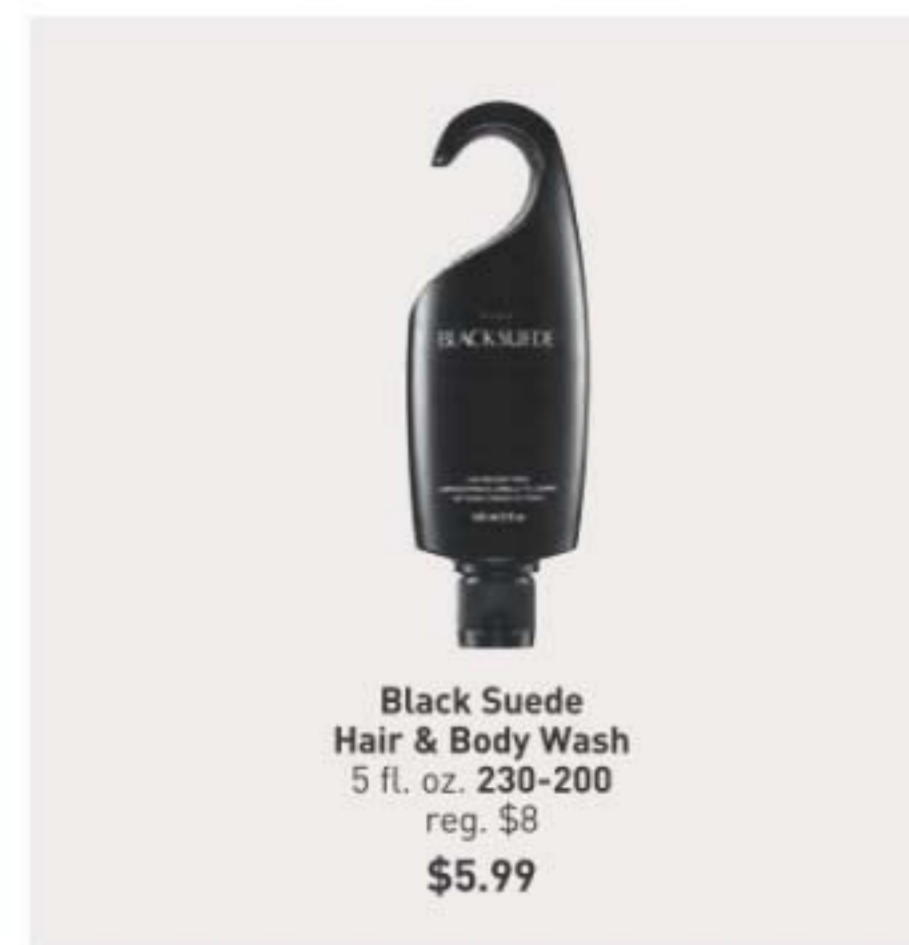
NEW

woody fougère
**Black Suede
 The Blend
 Eau de Toilette**
 A spirited mix of
 daring, masterfully
 crafted notes.
 3.4 fl. oz.
 433-865 reg. \$25
\$19.99

Top: Juniper, Violet Leaves, Aged Rum-Soaked Casks, Lemon
 Mid: Smoky Leather, Davana, Lavender
 Dry: Cedarwood, Patchouli, Vanilla, Vetiver, Spicy Woods



fresh aromatic
Black Suede Eau de Toilette
 Bergamot, leather and oakmoss.
 3.4 fl. oz. 908-703 reg. \$24
\$17.99



**Black Suede
 Hair & Body Wash**
 5 fl. oz. 230-200
 reg. \$8
\$5.99

SKIN CARE

Healthy-looking, hydrated skin starts here. Address your skin care concerns with our high-performance treatments.



Glisten Up

NEW

LIMITED EDITION
Beyond Glow Lipcerin
Lip Care Duo Gift Set
Lip-loving results that speak volumes. With a moisturizing ceramide, a plumping peptide, a gentle exfoliant and smoothing shea butter. Each, .5 fl. oz.
612-272 reg. \$36
\$26.99

Intensive Nourishing
Quenches dry lips with moisture.

Plump and Cool
With cooling menthol to visibly boost lip volume.



Lip service: see the results...



This image was generated using artificial intelligence.

Nourish

Beyond Glow Lipcerin Intensive Nourishing Lip Care
reg. \$20
\$14.99



An intensive, glistening formula that nourishes dry lips with moisture. With a plumping peptide, moisture-enhancing glycerin and smoothing shea butter. Clear finish. .5 fl. oz.

Nourishing
052-325

Plump

Beyond Glow Lipcerin Plump and Cool Lip Care
reg. \$20
\$14.99



An intensely moisturizing, glistening formula that visibly plumps and softens lips. With cooling menthol for an instant visible increase in lip volume. Clear finish. .5 fl. oz.

Plump and Cool
052-344

Tint

Beyond Glow Lipcerin Hydrating Tinted Lip Care
reg. \$20
\$14.99



An intensely moisturizing, glistening formula that visibly softens lips and adds a glossy hint of color. With a plumping peptide, moisture-enhancing glycerin and smoothing shea butter. .5 fl. oz.

- Twinkle**
052-750
- Flash**
052-909
- Splendor**
053-078
- Gleam**
053-097
- Flare**
053-101
- Smolder**
053-140

Key ingredients



CERAMIDE
Helps protect skin's moisture barrier to keep lips looking firm and smooth



SEA BUCKTHORN
Known to be a powerful, natural antioxidant and help with skin health



PHA
A gentle exfoliant that attracts water molecules to moisturize

- 55% more exfoliated lips***
- 30% shorter lip lines***
- 15% immediate increase of lip volume***
- 24% softer lips***

*In 2 weeks, based on using 3x a day.



Cleansers with benefits

SKIN CARE

new!
fruit-infused cleansers

Cleanse + Remove Makeup

For All Skin Types
With Kiwi Extract, Vitamins B3, B9 and Provitamin B5

Beyond Glow Gentle Foaming Cleanser with Vitamins and Kiwi

A gentle foaming water-based cleanser that easily washes off makeup and residue without stripping your skin, leaving it feeling soft and smooth. Skin looks brighter and revitalized. 5 fl. oz. **575-760** reg. \$19

\$14.99

For All Skin Types
With Mango Butter & Papaya Enzyme

Beyond Glow Melting Balm Cleanser with Enzyme and Mango Butter

Transforms into a silky oil when massaged onto skin. Add water for a creamy cleansing milk that rinses away makeup, residue and even visible blackheads and whiteheads, leaving your skin feeling soft, smooth and refreshed. 5 fl. oz. **575-865** reg. \$19

\$14.99

*Based on a consumer-perception study of 33 people.



in one use

relieves the look of redness caused by dryness[†]

Beyond Glow Centella Redness Relief Serum

A soothing gel serum with centella asiatica, panthenol and glycerin to help relieve the appearance of redness. 1 fl. oz. 350-399 reg. \$34

\$25.99



*Subject's face exposed to heat for 20 minutes to induce skin irritation.

†Based on a consumer-perception study of 32 people.

**Based on a consumer-perception study of 31 people.

††Based on a clinical study of 32 people.

NEW BEYOND GLOW

CENTELLA COLLECTION



96% said skin feels instantly cooled**

Beyond Glow Centella Cooling Toner
Refreshes and moisturizes irritated skin caused by dryness in seconds. 6.7 fl. oz. 350-403 reg. \$25

\$19.99

in 6 days
skin barrier improved^{††}

Beyond Glow Centella Soothing Cream
Moisturizes and reduces the look of redness caused by dryness. Hypoallergenic and noncomedogenic. 2.7 fl. oz. 350-422 reg. \$34

\$25.99



**Beyond Glow
Hyaluronic Acid 1.5% + Ferulic Acid Serum**

Hyaluronic acid, known as a "moisture magnet," helps infuse skin with instant and lasting hydration. Ferulic acid, a powerful antioxidant, helps defend skin from environmental stressors. 1 fl. oz. **255-593** reg. \$38

NOW \$22.49



**Beyond Glow
Vitamin C 6% + Ferulic Acid Serum**

Vitamin C visibly improves radiance for glowing skin. Ferulic acid, a powerful antioxidant, helps protect skin from environmental stressors. 1 fl. oz. **255-589** reg. \$38

\$29.99

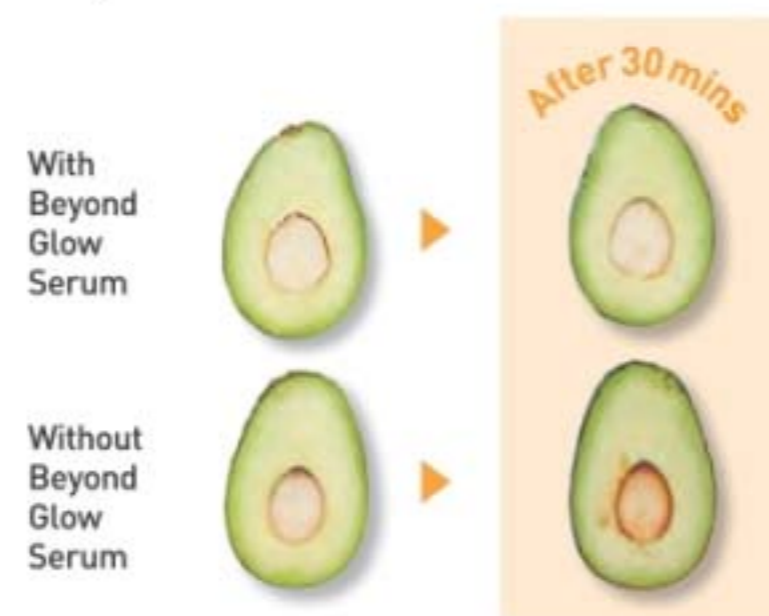
Clinically tested to improve skin radiance in 3 days

Q What makes Beyond Glow Vitamin C serum so special?

A **125 HOUR** 125-hour antioxidant effect*

4X 4X stronger skin barrier in 2 weeks†

Just look at the **antioxidant effect!** of Beyond Glow Vitamin C 6% + Ferulic Acid Serum



Boosts absorption of vitamin C by 2X**

Use with Vitamin C 6% + Ferulic Acid Serum for optimal results.

**Beyond Glow
Galvanic Booster Device**

Give your skin a spa treatment at home in three minutes. Red LED light helps tone the appearance of skin texture, enhances your radiant glow and visibly promotes skin health. On-the-go compact design. Automatically turns on and off. Uses two cell batteries (included). **255-627** reg. \$60

\$49.99

*Evaluated by in vitro test. †Based on stripped skin instrumental study on 31 people. **Evaluated by Dongduk Women's University Industry-Academia Cooperation (ex vivo test, DPPH, Oct. 13 to 24, 2023).

The Trending Star Ingredient: SNAIL MUCIN Complex

Clinically tested to improve skin tone and brightness

Beyond Glow Snail Mucin Complex + Panthenol Cream
Moisturizes while it visibly improves texture and elasticity. With snail mucin complex and panthenol, which helps lock in moisture. 3.7 fl. oz. **255-536** reg. \$34
\$25.99

Beyond Glow Snail Mucin Complex + Niacinamide Serum
Visibly brightens, moisturizes and retexturizes. With snail mucin complex and niacinamide, also known as vitamin B3, which helps even skin tone and strengthen the skin barrier. 3.3 fl. oz. **255-574** reg. \$34
\$25.99

Our cream and serum, formulated with snail mucin complex, moisturize and help visibly brighten skin with a clear, cushiony yet fast-absorbing texture that disappears into the skin while plumping it up with hydration.



Real Formulas, Real Results



"I'M GETTING SO MANY COMPLIMENTS ON MY BARE SKIN. I ALMOST DON'T WANT TO EVEN WEAR MAKEUP!"

"BEYOND GLOW IS A GAME CHANGER. I HAVE SEEN A SIGNIFICANT IMPROVEMENT IN MY SKIN."

The Ambassadors were gifted with the Beyond Glow Snail Mucin Cream, plus the four serums from the Beyond Glow regimen (pages 56-59), which they used with the Galvanic Booster Device, AM and PM, for two weeks.



**Beyond Glow
Niacinamide 2% Cream Mist**

Deliver an instant boost of hydration to your skin with this creamy, fast-absorbing spray-on serum that can be used under or over makeup for glowing skin anytime, anywhere. Infused with niacinamide. 3.3 fl. oz. 617-365 reg. \$34
\$25.99



**Beyond Glow
Niacinamide 10% Neck Firming Cream**

Nighttime hydrating neck and chest cream formulated with tried-and-true ingredients niacinamide, shea butter and squalane derived from olive oil, plus panthenol, which helps strengthen the skin barrier. Contains retinol. 3.3 fl. oz. 052-249 reg. \$38
\$29.99



**Beyond Glow
Niacinamide 10% Eye Cream**

Nighttime moisturizing eye cream formulated with tried-and-true ingredients niacinamide and caffeine, plus panthenol, which helps strengthen the skin barrier. Contains retinol. 1 fl. oz. 052-272 reg. \$24
\$19.99

Minimize the look of PORES

serum + cream together
3X
Reduction in the look of pores**



Beyond Glow Niacinamide 10% + Panthenol Serum
Helps improve even tone and elasticity. Niacinamide, also known as vitamin B3, helps even skin tone and replenish the skin barrier. Panthenol, also known as provitamin B5, helps lock in moisture. 1 fl. oz. 255-612 reg. \$38
\$29.99

Beyond Glow Niacinamide 10% All-in-One Cream
Nighttime facial cream that helps enhance your healthy-looking glow. All-in-one facial cream that visibly brightens skin, reduces fine lines and helps support the skin barrier. Contains retinol. 3.7 fl. oz. 617-350 reg. \$38
\$29.99



In just 4 weeks:

Beyond Glow Niacinamide 10% Neck Firming Cream

- Crepey skin appears smoothed*
- Neck and décolleté lines look improved*

*Based on a clinical study on 31 people.

Beyond Glow Niacinamide 10% Eye Cream

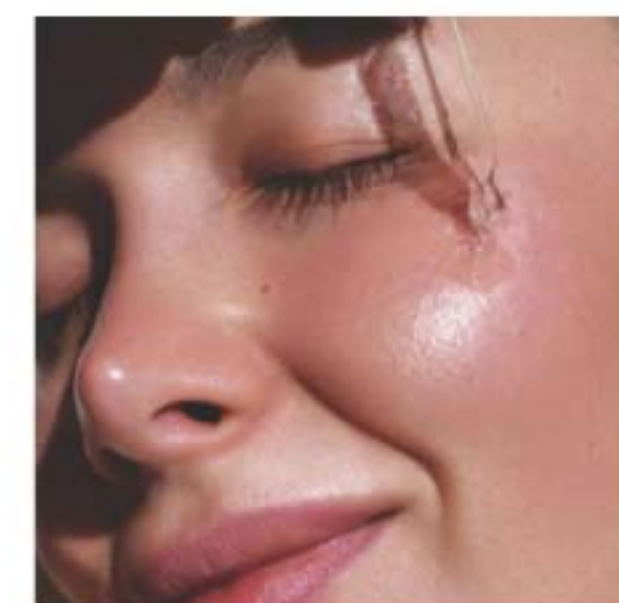
- Crow's-feet appear reduced*
- Helps under-eye bags look depuffed*

*Based on a clinical study on 30 people.

Serum + cream, when used together:
Reduce the look of pores by

44%^{††}

^{††}Versus using the serum alone, based on a clinical study.
^{††}In a 4-week clinical trial of 32 people.





great skin is
always in

Isa Knox Anew Clinical has a collection to target your concern and help keep your skin looking gorgeous.



Isa Knox Anew Clinical Line Eraser with Retinol Targeted Treatment
For targeted lines and wrinkles (expression lines) such as around forehead and mouth. .67 fl. oz. **925-159** reg. \$40
\$27.99



Isa Knox Anew Clinical Line Eraser with Retinol Treatment
Great for first-time retinol users. Use AM/PM. 1 oz. net wt. **763-330** reg. \$45
NOW \$22.49

SKIN CONCERN:
wrinkles

THE ANSWER:
LINE ERASER COLLECTION

Powered by **RETINOL**—the **#1 wrinkle-fighting ingredient** recommended by dermatologists

Isa Knox Anew Clinical Line Eraser with Retinol [1.0%] Advanced Retinol Serum
Our highest dose of retinol. Dramatically reduces the appearance of fine lines, wrinkles and dark spots. Use PM. 1 fl. oz. **390-751** reg. \$50
NOW \$30.49



100%
showed clinical improvement of fine lines and wrinkles in one week, with increased results over time



**Isa Knox Anew Clinical
Revitalize & Reveal Intensive Peel**
Intensive resurfacing peel similar to pro acid peels. With AHA and PHA.
1 fl. oz. **780-025** reg. \$45
\$29.99



**Isa Knox Anew Clinical
Revitalize & Reveal
Advanced Wrinkle Corrector**
In just two weeks, wrinkles appear reduced. 1.7 fl. oz. **470-100**
reg. \$40
NOW \$20.99



**Isa Knox Anew Clinical
Revitalize & Reveal
Resurfacing Lotion for Body**
Exfoliates with gentle yet effective AHA lactic acid. Moisturizes with shea butter. 5 fl. oz.
390-785 reg. \$34
NOW \$15.49



**Isa Knox Anew Clinical
Revitalize & Reveal
Extra Strength Retexturizing Peel**
Results similar to a 35% pro glycolic peel.*
30 fragrance-free pads. 2" diam. **632-774**
reg. \$40
NOW \$20.99

*In 6 out of 8 attributes tested over a 7-week period.

SKIN CONCERN:

uneven tone & texture

THE ANSWER:

REVITALIZE & REVEAL

Formulated with **AHAs (alpha hydroxy acids)**, miracle exfoliators that help to visibly **minimize fine lines, discoloration and dullness** for a fresh, radiant look

**Isa Knox Anew Clinical
Revitalize & Reveal
Resurfacing Expert Smoothing Fluid**
79% as effective as a pro micro-dermabrasion without the same irritation. 1 fl. oz.
852-282 reg. \$44
\$29.99



SKIN CONCERN:

loss of firmness

THE ANSWER:

COLLAGEN BOOSTER

Formulated with **peptides**, **exfoliators** and **amino acids** that help stimulate skin renewal so it looks **firmer** and **smoother**

Isa Knox Anew Clinical Collagen Booster Firming Cream

With peptides that boost skin renewal to help restore youthful bounce. With moisturizing and skin-plumping niacinamide and squalane. Hygienic, airless pump. 1.7 fl. oz. 069-327 reg. \$45

\$29.99



In just 7 days, eye area looks lifted, firmer and tighter.



Isa Knox Anew Clinical Collagen Booster Eye Lift Pro Dual Eye System

In just 7 days, eye area looks lifted, firmer, tighter. With a peptide complex to help boost skin renewal. Gel, .33 fl. oz. Cream, .33 fl. oz.

564-550 reg. \$40

\$24.99



SKIN CARE



Isa Knox Anew Clinical Collagen Booster Rejuvenating Serum Ampoules

Powerful peptide blend boosts skin renewal. 60 capsulated single-use ampoules. .008 fl. oz. each.

803-077 reg. \$66

\$54.99



Isa Knox Anew Clinical Collagen Booster Microneedling Polisher

At-home alternative to micro-dermabrasion and micro-needling. Visibly diminishes pores, fine lines and wrinkles.

1.7 fl. oz. 798-592

reg. \$34

\$20.99



Anew Ultimate Supreme Radiant Firming Cream

A lightweight moisturizer perfect for daytime use. With panthenol, niacinamide and peptides to help boost hydration, visibly restore brightness and firm skin contours. With bakuchiol, an alternative to retinol, to visibly reduce wrinkles and discolorations without irritation. Clinically tested to improve skin texture and elasticity.

1.7 fl. oz. **835-052** reg. \$60

\$39.99



Anew Ultimate Multi-Performance Eye System

Visibly smooths crow's-feet and de-puffs under-eye bags. Cream, .5 oz. net wt. Elixir, .09 oz. net wt. **021-862** reg. \$42

\$27.99



Anew Ultimate Night Repair Serum

See improved tone and texture. With peptides, licorice, hyaluronic acid and niacinamide.

Use PM before moisturizer. 1 fl. oz. **625-355** reg. \$45

NOW \$21.49



Anew Ultimate Supreme Eye Balm

Moisturizing formula infused with squalane, sunflower seed oil and antioxidant vitamin E. Wear alone or under makeup.

0.1 oz. net wt. **625-340** reg. \$45

\$28.99



Anew Ultimate Multi-Performance Night Cream

It works while you sleep to revive and recreate the look of youthful skin. 1.7 oz. net wt.

763-311 reg. \$42

\$27.99



Anew Ultimate Supreme Dual Elixir

With Black Pearl Extract and precious oils. See a dramatic difference in even advanced signs of aging. Serum/Oil, .67 fl. oz. each.

963-925 reg. \$60

\$39.99



Anew Ultimate Supreme Advanced Performance Crème

With Black Pearl Extract. See a dramatic difference in deep wrinkles and skin radiance.

1.7 oz. net wt. **014-735** reg. \$60

NOW \$29.99



Anew Ultimate Multi-Performance Day Cream Broad Spectrum SPF 25

See wrinkles fade and youthful vibrance return.

1.7 oz. net wt. **763-307** reg. \$42

\$27.99

defying gravity
has never been easier



Anew Platinum Firm and Sculpt Cream for Neck and Chest
With Peptide Lifting Complex to treat the skin on your neck and chest, which is more vulnerable to wrinkles and sagging. Use PM after cleansing. 1.7 oz. net wt. 763-584 reg. \$42
~~\$27.99~~ **\$20.99**

Anew Platinum Night Cream
Skin appears smoother overnight, resculpted over time. 1.7 oz. net wt. 753-439 reg. \$42
~~\$27.99~~ **\$20.99**

Anew Platinum Eye & Lip Cream
Dual applicator. .5 oz. net wt. 902-614 reg. \$42
~~\$27.99~~ **\$20.99**

Anew Platinum Day Cream Broad Spectrum SPF 25
With Paxillium Technology to help defy gravity and Radiestant Microspheres to help visibly restore radiance. 1.7 oz. net wt. 184-146 reg. \$42
~~\$27.99~~ **\$20.99**



Anew Platinum Age Delay Serum
With niacinamide, panthenol and peptide. Formulated to visibly boost elasticity for a firmer look. Use AM and PM before moisturizer. 1 fl. oz. 625-609 reg. \$45
~~\$28.99~~ **\$21.49**



Anew Platinum Sculpting Sleep Mask
An overnight mask that helps visibly lift, plump and nourish skin while you sleep. Formulated with skin-contouring ingredients, including tetrapeptide, panthenol, niacinamide and yeast extract. Clinically tested to improve skin texture and wrinkles in two weeks. 1.7 fl. oz. 835-033 reg. \$42
~~\$27.99~~ **\$20.99**



Anew Platinum Sculpting Body Serum
With moisture-boosting niacinamide, panthenol (provitamin B5) and peptides. 6.7 fl. oz. 506-249 reg. \$45
~~\$28.99~~ **\$21.49**

Anew Vitamin C Exfoliating Peel Pads
 With PHA and pineapple extract, vitamin C, panthenol and glycerin. Exfoliates and helps visibly brighten. Formulated without alcohol and fragrance. 4.3 fl. oz. 70 pads. 169-143 reg. \$28
NOW \$14.99



Anew Vitamin C Antioxidant Lip Treatment
 Nourishes lips with vitamins C and E. .13 oz. net wt. 784-547 reg. \$14
\$7.99



Anew Vitamin C Brightening Serum
 Skin is visibly energized and brightened with the power of 10% pure vitamin C. 1 fl. oz. 522-066 reg. \$44
\$25.99



Anew Vitamin C Brightening Eye Cream
 Visibly reduces dark circles. Under-eye area looks brighter and more even-toned. .5 fl. oz. 953-602 reg. \$34
NOW \$16.99



Anew Vitamin C Overnight Radiant Mask
 Revitalizing formula with niacinamide, shea butter and sunflower seed oil. Apply after cleansing, treating and moisturizing. 1.7 fl. oz. 157-086 reg. \$36
\$19.99



Anew Vitamin C Illuminating Priming Moisturizer
 With skin-smoothing silicones. Use after Brightening Serum. Wear alone or under makeup. 1.7 fl. oz. 914-671 reg. \$34
NOW \$16.99



C Spot Go

Vitamin C is known as the go-to skin brightener. Now skin appears brighter in one week* with a concentrated treatment formulated to target dark spots, discolorations and dullness.

SKIN CARE



97%
 agree
 skin discolorations
 appear to fade[†]

†In a clinical study. In a 4-week, consumer-perception study.

Anew Vitamin C Targeted Skin Brightener
 With the triple-antioxidant power of 7% vitamin C, 2% ferulic acid and vitamin E, skin looks brighter and more even-toned with a dramatically improved appearance in overall skin clarity. With moisturizing allantoin and soothing aloe. Suitable for sensitive skin. .5 fl. oz. 169-177 reg. \$34
\$22.99

EVERY BODY WANTS TO LOOK RADIANT

Vitamin C, plus other skin-nourishing ingredients, helps your skin look brighter and smoother all over.



Anew Vitamin C Nourishing Body Butter
With hydrating shea butter and niacinamide, plus vitamins C and E to help restore radiance. Fruity-floral and citrus scent. 7.8 fl. oz. **443-767** reg. \$32
\$19.99

Anew Vitamin C Glow Body Scrub
Sugar-based formula with pineapple and papaya enzymes and coffee seed extract exfoliates dry, dull skin. Citrus scent. 9 oz. net wt. **443-752** reg. \$36
\$19.99



Anew Vitamin C Illuminating Body Serum
Light-reflecting pigments leave skin looking luminous. 6.7 fl. oz. **157-071** reg. \$34
NOW \$14.99



Anew Vitamin C Dry Body Oil
Soothing sunflower seed and jojoba oils help keep skin feeling supple. 3.4 fl. oz. **074-432** reg. \$34
NOW \$14.99



Isa Knox Anew Solaire Everyday Mineral Face Protection Cream Broad Spectrum SPF 50
Lightweight formula with zinc oxide. Suitable for sensitive skin. Water-resistant (40 minutes). 1.7 fl. oz. **911-467** reg. \$32
\$24.99



Isa Knox Anew Solaire Everyday Face Protection Lotion Broad Spectrum SPF 50
1.7 fl. oz. **911-400** reg. \$32
\$24.99



Isa Knox Anew Solaire Active Face & Body Protection Lotion Broad Spectrum SPF 50
2.7 fl. oz. **154-948** reg. \$35
\$27.99



92% of women believe it dramatically improves skin's overall appearance.*

Anew Power Serum
Visibly improves wrinkles, radiance, firmness and texture. Use AM and PM after cleansing, before moisturizing. 1 fl. oz. **838-047** reg. \$45
\$28.99

*Based on those who expressed an opinion in a consumer-perception study.



Anew Hydra Fusion De-Puffing Eye Serum
With caffeine and hyaluronic acid. Cooling ceramic tip. Instantly boosts hydration around eye area by 3X. .5 fl. oz. **137-737** reg. \$34
NOW \$16.99

Anew Hydra Fusion 1.5% Hyaluronic Acid Serum
With three different molecular sizes of HA that reach multiple layers of skin's surface to visibly plump skin. 1 fl. oz. **290-390** reg. \$44
NOW \$19.49

Anew Hydra Fusion Cleansing Micellar Water
No need to rinse off. 10.1 fl. oz. **139-380** reg. \$14
\$9.99

Anew Hydra Fusion Nighttime Facial Treatment
Hyaluronic acid. Shea butter beads. Visibly re-plumps skin with 3X more moisture. Relaxing rose scent. 1.7 oz. net wt. **139-429** reg. \$34
NOW \$16.99

Anew Hydra Fusion Gel Cream
72 hours of long-lasting hydration. 1.7 oz. net wt. **266-893** reg. \$34
NOW \$16.99

100% agree:
skin looks smoother and softer*

*Based on a consumer-perception study.



For dry, irritated skin

moisturizing bomb toner
A fast-absorbing, milky-textured toner clinically tested to increase skin's moisture levels in arid, dry conditions. 6.7 fl. oz. **929-207** reg. \$33
\$30

For dryness, loss of elasticity and firmness

moisturizing eye bomb
Lightweight, refreshing eye cream cools on contact. Helps keep eye area looking firm, resilient and smooth. .84 fl. oz. **021-915** reg. \$53
\$48



For dryness, dullness and uneven texture

The True Cream - Aqua Bomb
70% increase in hydration levels.* 1.68 fl. oz. **556-207** reg. \$42
\$38
*Based on a clinical study.



For an extra boost of hydration

aqua bomb hydrating toner
Water-based. With hyaluronic acid, honeysuckle flower extract and baobab tree seed extract. Use after cleansing, before serum and moisturizer. 6.7 fl. oz. **952-974** reg. \$33
\$30



For dryness, loss of elasticity and firmness

The True Cream - Moisturizing Bomb
26 hours of long-lasting moisture.* 1.69 fl. oz. **079-252** reg. \$42
\$38
*Based on a clinical study.



For dryness, dullness and uneven texture

aqua bomb jelly cleanser
Jelly to foam. Amino acids and glycerin-based cleansing agents gently cleanse. 5.41 fl. oz. **445-353** reg. \$35
\$30



For dull, dry, fatigued skin

aqua bomb sleeping mask
Unique jelly-pudding texture! Replenishes with explosive hydration for smoother skin and a healthy glow. 2.53 oz. net wt. **514-717** reg. \$42
\$38





NORMAL TO DRY SKIN
Isa Knox LXNEW Clean Nourishing Cream Cleanser
 Removes impurities and makeup while restoring moisture. 5 fl. oz. 717-990 reg. \$14
\$10.99



OILY TO NORMAL SKIN
Isa Knox LXNEW Clean Soothing Whipped Oil Cleanser
 Helps eliminate impurities and excess oil. 5 fl. oz. 718-025 reg. \$19
\$14.99



NORMAL, DRY AND COMBINATION SKIN
Isa Knox LXNEW Clean Balancing Gel Cleanser
 Gel to foam. Helps remove oil and impurities while rebalancing skin. 5 fl. oz. 718-010 reg. \$14
\$10.99



NORMAL, DRY, COMBINATION, OILY SKIN
Isa Knox LXNEW Clean 2-in-1 Exfoliating Cleansing Balm
 Melts away makeup and impurities. Spatula included. 3.5 oz. net wt. 718-006 reg. \$32
NOW \$19.49

Avon Solutions Banishing Serum
 An intensive serum with ingredients known to help improve the appearance of dark spots and uneven skin tone. 1 fl. oz. 507-905 reg. \$16
\$12.99

Avon Solutions Dramatic Firming Serum
 This moisturizing serum contains effective anti-aging ingredients that help promote a more youthful appearance. 1 fl. oz. 507-871 reg. \$16
\$12.99



Avon Solutions Nurtura Serum
 With skin-nourishing ingredients known to help combat dryness and flakiness, and help hydrate. 1 fl. oz. 507-924 reg. \$16
\$12.99



Solutions Dramatic Firming Cream
 Skin looks and feels smoother. 1.7 fl. oz. 374-657 reg. \$14
\$9.99



Solutions Nurtura Replenishing Cream
 Adds moisture to dry skin. 1.7 fl. oz. 908-263 reg. \$14
\$9.99



Solutions Banishing Cream Skin Discoloration Improver
 Visibly improves skin tone. 1.7 fl. oz. 267-115 reg. \$14
\$9.99



Solutions Anti-Aging Cream
 Moisturizing formula works to visibly smooth the appearance of fine lines and wrinkles. 1.7 fl. oz. 949-460 reg. \$14
\$9.99



Rice Water Bright Rice Bran Gentle Exfoliating Cleanser
Daily scrub with organic rice bran powder, rice bran oil and hydrated silica. 10.1 fl. oz. **376-865** reg. \$19
\$14.99



Rice Water Bright Facial Cleansing Lotion
Helps brighten skin. Gently removes makeup and impurities. 6.7 fl. oz. **720-184** reg. \$14
\$10.99



Rice Water Bright Foaming Cleanser
Light whipped foam. With rice water and soapwort extract. Skin looks clear and bright. 10.1 fl. oz. **508-093** reg. \$19
\$14.99



Rice Water Bright Mild Cleansing Water
Removes impurities via the micellar method, so no need to rinse off! 16.9 fl. oz. **288-360** reg. \$18
\$13.99



Smaller Size! Rice Water Bright Foaming Cleanser
Light whipped foam. With rice water and soapwort extract. Convenient size for your medicine cabinet. 5 fl. oz. **478-479** reg. \$13
\$9.99



Rice Water Bright Light Facial Cleansing Oil
With jojoba oil and rice water extract, known to visibly brighten and moisturize skin. 5 fl. oz. **720-199** reg. \$20
\$15.99



Rice Water Bright Cleansing Facial Wipes
Great on the go. With rice extract to moisturize while cleansing. Removes eye makeup. 50 sheets. **508-108** reg. \$13
\$9.99



Rice Water Bright Facial Massage Cream
With rice water, vitamins A, B and E, ceramide and minerals. After cleansing, massage into skin 2-3 times a week. 6.7 fl. oz. **450-200** reg. \$25
\$19.99



Calendula Essential Moisture
Daily skin care for irritated and sensitive skin. With moisturizing calendula extract, a soothing herb complex, and the ultimate hydrator, hyaluronic acid.

A. Serum
A moisturizing and soothing serum that helps calm skin and enhance hydration. 1.35 fl. oz. **746-263** reg. \$15
NOW \$8.99

B. Eye Cream
A lightweight, non-greasy, moisturizing and soothing eye cream. .67 fl. oz. **966-245** reg. \$14
\$10.99

C. Cream
A moisturizing cream that instantly hydrates while it gently helps soothe dry, itchy, irritated skin. 1.69 fl. oz. **966-101** reg. \$15
NOW \$8.99

Pamper yourself from head to toe. We keep your body and hair looking healthy so you'll love your locks and have the confidence to show more skin.

Ooh La Lavender

NEW

Skin So Soft Calming Lavender

Infused with a superior blend of lavender and chamomile essential oils, plus jasmine* oil and extract, for soft, smooth skin with a healthy-looking glow. Calming lavender scent.



Body & Bath Oil

With a luxe blend of lavender and chamomile essential oils, plus jasmine extract, this antioxidant-infused, luxurious bath oil leaves skin feeling soft and supple. 11.8 fl. oz. **511-354** reg. \$27 **\$21.99**

Body Lotion

With sunflower seed oil, rosehip seed oil, shea butter, hydrating hyaluronic acid and soothing aloe so skin feels soft and smooth. Contains antioxidant-rich resveratrol, known to help skin look supple. 24-hour moisturization. 11.8 fl. oz. **511-995** reg. \$21 **\$16.49**

Sugar Scrub

Exfoliating scrub enhanced with a relaxing blend of essential oils and soothing allantoin. Skin looks and feels moisturized and smooth. 9 oz. net wt. **512-418** reg. \$19 **\$14.99**

*Body Lotion contains jasmine essential oil. Body & Bath Oil and Sugar Scrub contain jasmine extract.

good for your
BODY & HAIR
good for the earth

Clean, vegan, plant-based, cruelty-free
hair & body collections
with naturally derived ingredients.
Formulated without parabens,
phthalates or synthetic fragrances
and dyes, and no animal testing.



SKIN SO SOFT PURE NATURE BODY COLLECTION

Revitalizing Body Cream

94% naturally derived. Smooth on moisturizing cream after bath or shower. 12 fl. oz. **629-767** reg. \$21
NOW \$11.99

Revitalizing Shower Gel

96% naturally derived. Richly lathering gel. 12 fl. oz. **415-170** reg. \$20
\$15.99

Revitalizing In-Shower Body Lotion

95% naturally derived. Hydrating and softening lotion. Apply onto wet skin after shower or bath. 8 fl. oz. **633-857** reg. \$21
\$16.49

Sustainable*
packaging
Eucalyptus
mint scent



*Shower Gel and Body Cream bottles: 95% post-consumer recycled material, excluding cap. Body Lotion tube: 55% post-consumer recycled material, excluding cap.

NEW

**SKIN SO SOFT
PURE NATURE HAIR COLLECTION**

Nourishing Shampoo

With panthenol (provitamin B5), known to help moisturize, and citric acid, known to help balance the pH level of the scalp so hair looks healthier. 12 fl. oz. **290-074** reg. \$21
\$16.99

Nourishing Conditioner

With panthenol (provitamin B5), known to help moisturize and visibly improve elasticity. Leaves hair looking smooth, healthy and shiny. 12 fl. oz. **290-089** reg. \$21
\$16.99

Intense Nourishing Hair Mask

With panthenol (provitamin B5), known to help moisturize and visibly improve elasticity for visibly smoother, softer, stronger hair. 8 fl. oz. **290-131** reg. \$21
\$16.99

Sustainable*
packaging
Eucalyptus mint
scent



*Shampoo and Conditioner bottles: 95% post-consumer recycled material, excluding cap. Hair Mask tube: 55% post-consumer recycled material, excluding cap.

THE BEAUTY OF *Jojoba Oil*

This plant extract mimics skin's natural oils, with vitamins and minerals essential to keep skin soft and smooth.

- | | | |
|---|--|---|
| Gelled Body Oil
Dries to a silky finish. 6.76 fl. oz.
939-500
reg. \$14
\$10.99 | Bath Oil Spray
Locks in hydration. 5 fl. oz.
824-580
reg. \$19
\$12.99 | Bonus-Size Bath Oil
Use during or after bath or shower. 25 fl. oz. 037-690
reg. \$30
\$24.99 |
|---|--|---|



ORIGINAL

Bath Oil
Fresh herbal scent. 16.9 fl. oz. 439-040
reg. \$24
\$17.99

Replenishing Hand Cream
3.4 fl. oz. 776-633
reg. \$8
\$5.99

Beauty Bar Soap
3.17 oz. net wt. 543-110
reg. \$4.50
NOW \$2.49

Body Lotion
48 hours of moisture. 11.8 fl. oz. 761-634
reg. \$15
\$11.99

Bonus-Size Body Lotion
33.8 fl. oz. 825-351
reg. \$26
\$17.99

Bonus-Size Shower Gel
Cleanses and hydrates. 33.8 fl. oz. 433-444
reg. \$18
\$14.49

Shower Gel
5 fl. oz. 914-580
reg. \$8
\$4.99



THE BEAUTY OF *Argan Oil*

So precious, it's called "liquid gold."

Packed with vitamin E, it helps to visibly restore skin's luster and keep it irresistibly soft.



Gelled Body Oil
Dries to a silky finish.
6.76 fl. oz. 908-244
reg. \$14
\$10.99

Bonus-Size Bath Oil
Hydrates during or
after bath or shower.
25 fl. oz. 862-920
reg. \$30
\$24.99



SOFT & SENSUAL

Shower Gel
5 fl. oz. 914-710 reg. \$8
\$4.99

Bath Oil
Spicy floral scent.
16.9 fl. oz. 504-614 reg. \$24
\$17.99

Bonus-Size Shower Gel
33.8 fl. oz. 018-142 reg. \$18
\$14.49

Body Lotion
11.8 fl. oz. 400-720 reg. \$15
\$11.99

Replenishing Hand Cream
3.4 fl. oz. 779-924 reg. \$8
\$5.99

Bonus-Size Body Lotion
33.8 fl. oz. 825-643 reg. \$26
\$17.99

Beauty Bar Soap
3.17 oz. net wt. 543-215 reg. \$4.50
NOW \$2.49





Radiant Moisture Bonus-Size Bath Oil.
Hydrates during or after bath or shower.
25 fl. oz. 249-788
reg. \$30
\$24.99 \$18.49

Comforting Shea Bath Oil
With shea butter and oil. Vanilla, sandalwood and musk scent. 16.9 fl. oz. 015-071
reg. \$24
\$17.99 \$13.49




Supreme Nourishment Bonus-Size Body Lotion
48 hours of moisture. 33.8 fl. oz. 745-468
reg. \$26
\$17.99 \$13.49



Botanical Essence Bath Oil
With nourishing botanical extracts. Uplifting herbal scent. 16.2 fl. oz. 027-253 reg. \$32
\$24.99 \$18.49




Radiant Moisture Shower Gel
Gently cleanses and hydrates. 5 fl. oz. 410-914
reg. \$8
\$4.99 \$3.49



Radiant Moisture Replenishing Hand Cream
3.4 fl. oz. 776-561
reg. \$8
\$5.99 \$4.49



Radiant Moisture Bonus-Size Shower Gel
33.8 fl. oz. 433-922
reg. \$18
\$14.49 \$10.49



Radiant Moisture Bonus-Size Body Lotion
48 hours of moisture. 33.8 fl. oz. 620-956
reg. \$26
\$17.99 \$13.49




Supreme Nourishment Enriching Coconut Oil Wash
With nourishing vitamin E. 11.8 fl. oz. 366-380
reg. \$15
\$12.99 \$9.49

Supreme Nourishment Enriching Coconut Oil Milk Lotion
Leaves skin feeling silky soft. 11.8 fl. oz. 419-835
reg. \$17
\$11.99 \$8.99

**Fresh & Smooth
Meadowfoam
Facial Hair
Removal Cream**
Dermatologically
tested. 1 fl. oz.
562-543
reg. \$10
\$7.99



**Fresh & Smooth
Body Hair
Removal
Cream**
4.2 fl. oz.
562-467
reg. \$10
\$7.99



Skin So Soft FOR ACNE-PRONE SKIN

Developed for all skin types with
gently exfoliating salicylic acid.

Suitable for daily use.
Formulated without
synthetic fragrances.



**Acne-Prone Skin
Soothing Spot Gel**
.5 fl. oz.
072-721
reg. \$18
NOW \$10.49



**Acne-Prone Skin
Body Pads**
70 pads.
039-330
reg. \$30
NOW \$18.49



**Acne-Prone Skin
Soothing Gel**
6.1 fl. oz.
040-636
reg. \$20
NOW \$11.99



**Acne-Prone Skin
Foaming Cleanser**
5 fl. oz. 041-647
reg. \$17
NOW \$9.49



**Acne-Prone Skin
Exfoliating Body Wash**
10.1 fl. oz.
041-556
reg. \$20
NOW \$11.99



**Acne-Prone Skin
Gentle Body Wash**
10.1 fl. oz.
039-325
reg. \$20
NOW \$11.99



**Skin So Soft Facial Bar
Hyaluronic Acid* &
Niacinamide†**
Enriches skin
with moisture.
3.1 oz. net wt.
364-573 reg. \$6
\$4.99

**Skin So Soft Facial Bar
Salicylic* & Lactic** Acids**
Gently exfoliates to
help skin look softer
and luxuriously smooth.
3.1 oz. net wt.
364-569 reg. \$6
NOW \$3.49

**Skin So Soft Facial Bar
Retinol†† & Vitamin C†**
Helps visibly even tone,
brighten and enhance
skin clarity.
3.1 oz. net wt.
364-607 reg. \$6
\$4.99

**Skin So Soft Facial Bar
Collagen††† & Goat Milk††††**
Deeply hydrates.
3.1 oz. net wt.
364-626 reg. \$6
\$4.99

*0.001%. **0.0009%. †0.0001%. ††0.00001%. †††0.007%.

Moisture Therapy Daily Skin Defense Bonus-Size Body Lotion
 Helps restore moisture to everyday dry skin.
 33.8 fl. oz.
725-793
 reg. \$24

\$16.99



Moisture Therapy Balance + Soothe Body Wash
 Softens as it gently cleanses.
 13.2 fl. oz.
438-078
 reg. \$23
NOW \$13.49



Moisture Therapy Calming Relief Bonus-Size Body Lotion
 Soothes and relieves dry, itchy skin.
 Fragrance-free.
 33.8 fl. oz.
828-164
 reg. \$24
\$16.99



Moisture Therapy Balance + Soothe Body Lotion
 Skin looks softer and healthier.
 13.2 fl. oz.
438-082
 reg. \$25
NOW \$14.99



Moisture Therapy Intensive Healing & Repair Bonus-Size Body Lotion
 72-hour moisture for extra-dry skin.
 Fragrance-free.
 33.8 fl. oz.
828-111
 reg. \$24
\$16.99



Moisture Therapy Intensive Healing & Repair Extra Strength Cream
 24-hour moisturization.
 Fragrance-free.
 5.3 oz. net wt.
224-982
 reg. \$8
\$5.99



rescue extra-dry skin

Moisture Therapy Intensive Healing & Repair All Over Rescue Balm Stick
 24-hour moisturization in a convenient, mess-free, glide-on stick. Fragrance-free. Apply anywhere on body, face and even lips. Great on the go.
 .63 oz. net wt. **470-004**
 reg. \$16
\$12.99



Moisture Therapy Intensive Healing & Repair All Over Rescue Balm
 24-hour moisturization for extra-dry skin. With soothing and smoothing avocado oil and shea butter. Apply anywhere on body, face and even lips to seal in moisture and keep skin looking healthy. Fragrance-free.
 2.5 fl. oz. **419-840**
 reg. \$14
\$10.99

Which ORGANIST collection is right for you?

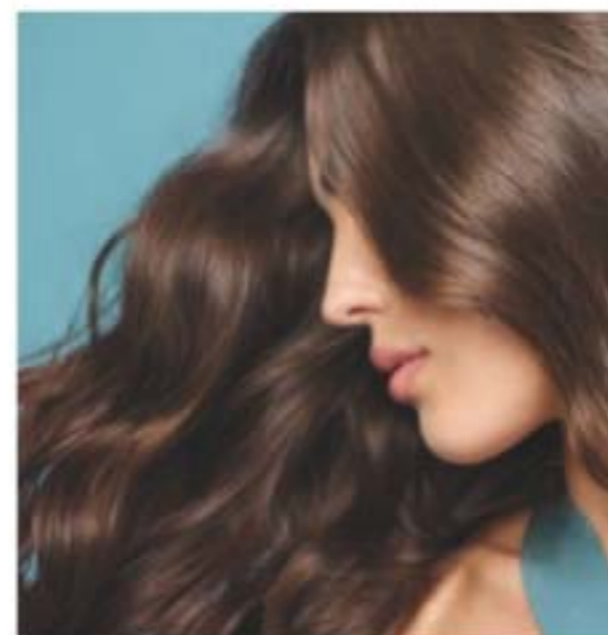
DRY, DAMAGED HAIR?



NOURISH + MOISTURIZE WITH RICE WATER



FINE HAIR?



REVITALIZE + STRENGTHEN WITH ROSEMARY + MINT



OILY SCALP + HAIR?



CLARIFY + PURIFY WITH APPLE CIDER VINEGAR



ORGANIST

for all your unique hair needs

Organist Rice Water | *nourishing*

- a time-honored Asian beauty secret
- rich in amino acids, vitamins B and E and minerals
- helps reduce breakage and split ends to smooth hair and improve shine and manageability



add moisture to dry, damaged hair for a healthy-looking shine

CLEANSE

Damage Care Shampoo
With biotin, ceramide, protein and 17 amino acids to deeply nourish each strand, restoring strength and resilience. Enriching rice water helps transform dry hair into a silky mane. 16.9 fl. oz. 381-803 reg. \$19

\$14.99

TREAT

Damage Care Treatment
Perfect for hair in need of hydration and repair. Biotin, protein and 17 amino acids help nourish each strand from within. Hyaluronic acid and collagen help smooth hair for resilience and softness. 6.7 fl. oz. 381-860 reg. \$19

\$14.99



jasmine
and
freesia
scent

Nourishing
Oil Layer

Hydrating
Essence Layer



BEFORE



AFTER

nourish + hydrate hair with an uplifting fragrance mist

Moisture Replenish Hair Mist
Two-layer mist: a hydrating essence plus five plant oils, including jojoba and argan oils, for deep moisturization. Rice water, biotin, ceramide, protein and amino acids help revitalize, nourish and soften dry, damaged hair. Shake well before use. Use on damp or dry hair. Fresh floral scent. 2.7 fl. oz. 381-985 reg. \$24

\$18.99

Images show results using Organist Rice Water Moisture Replenish Hair Mist as directed. Mist was applied multiple times on dry hair. Minimal styling for consistency. Results may vary.

FOR BODY

With **antioxidants** ideal for helping to moisturize dry skin

CLEANSE

Nourishing Body Wash
With soap derived from olive oil. Contains panthenol and hyaluronic acid. Helps skin appear soft and moisturized. 16.9 fl. oz. 382-097 reg. \$19

\$14.99

NOURISH

Nourishing Body Milk
With plant-derived moisturizer and plant-derived oil (squalane) to help hydrate and nourish dry skin. Easily absorbed. Nongreasy. 10 fl. oz. 382-336 reg. \$19

\$14.99



Organist Rosemary + Mint | *strengthening*

- helps hydrate the scalp, soothe irritation and stimulate hair growth so your mane looks thicker and fuller
- rich in antioxidants to help prevent damage of follicles that leads to hair loss

healthy-looking hair starts at the scalp

CLEANSE

Rosemary Mint Strengthening Shampoo + Conditioner
With rosemary and biotin, to help to keep scalp and hair looking healthy. Refreshing, cooling peppermint helps scalp feel revitalized. Each, 16.9 fl. oz.
Shampoo 542-974
Conditioner 542-993
reg. \$19
\$14.99 each

THICKEN

Rosemary Mint Scalp Strengthening Tonic
With rosemary, mint, biotin and caffeine. Scalp feels nourished and revitalized with a cooling sensation. Hair looks fuller, thicker, stronger. 5 fl. oz. **544-427**
reg. \$24
\$18.99

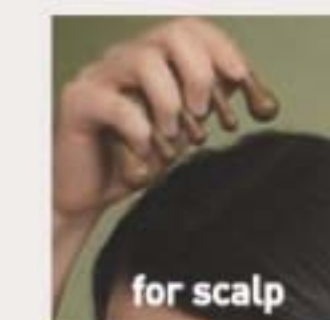


visibly strengthen hair from the roots

Rosemary Mint Hair Strengthening Oil
2-in-1 daily-use oil for hair and scalp. With essential oils, 99% derived from plants, plus biotin. Rosemary and mint blend. Hair feels fortified, nourished and refreshed. 2 fl. oz.
542-845 reg. \$24
\$18.99

FOR HAIR & BODY

Gua Sha Scalp Massager
For scalp, neck and body. Helps improve circulation for visibly strong, healthy hair. 100% wood.
542-960 reg. \$24
\$18.99



for scalp



for neck

strengthen your body's moisture barrier
Rosemary Mint Body Wash
Invigorate your senses. Formulated with AHA/BHA/PHA and panthenol. 16.9 fl. oz. **544-446**
reg. \$19
\$14.99





Organist
**Apple Cider
 Vinegar**
*hair and body
 purifying*



Organist **Apple Cider Vinegar** | *clarifying*

- helps remove oil and buildup accumulated on scalp and hair
- popular rinse-off method known to help maintain scalp's pH balance and add shine to hair



clarify with APPLE CIDER VINEGAR + COLLAGEN + HYALURONIC ACID

Clarifying Shampoo
 For oily hair. Helps clarify and nourish scalp and hair for healthy-looking shine as it cleanses.
 16.9 fl. oz.
 482-650
 reg. \$19
\$14.99

Clarifying Conditioner
 For oily, dull hair. Helps clarify and nourish scalp and hair for a healthy-looking shine.
 16.9 fl. oz.
 482-664 reg. \$19
\$14.99

Clarifying Water Treatment
 Rinse-out treatment infused with collagen and hyaluronic acid. Formulated to clarify hair and help it look naturally soft instantly with a healthy shine.
 6 fl. oz. 482-717
 reg. \$19
\$14.99

Scalp Tonic
 Leave-on scalp tonic with a blend of 10 natural herbs. Helps dissolve oily buildup and revitalizes scalp.
 5 fl. oz.
 482-721 reg. \$24
\$18.99

Organist Apple Cider Vinegar | *body purifying*

Crafted from a curated selection of natural ingredients, including exfoliating apple cider vinegar extract, detoxifying ginger, cooling menthol and enriching biotin. Formulated without silicone oil or sulfates.

Exfoliating Body Scrub
With panthenol and AHA/BHA/PHA, it gently exfoliates dead skin cells to help skin look and feel refreshed all over.
6.7 fl. oz. 482-846
reg. \$19
\$14.99

Body Wash
For normal to oily skin. It blends apple cider vinegar extract with panthenol so skin feels refreshed and nourished.
16.9 fl. oz. 482-740
reg. \$19
\$14.99



WITH
PANTHENOL
AND
AHA/BHA/PHA

tone, purify + clarify THE LOOK OF DULL SKIN



Organist Botanical Castile Soap

Daily vegan washes for face and body infused with soap made from olive oil and formulated without parabens, silicone oil or sulfates. Leaves skin feeling refreshed, revitalized and luxuriously moisturized while it cleanses.



revitalize

FOR OILY SKIN
Tea Tree & AHA BHA
Controls oil as it deeply cleanses and refreshes. Fresh herbal scent.
16.2 fl. oz. 348-115
reg. \$14
\$10.99

moisturize

FOR DRY SKIN
Rose Water & Hyaluronic Acid
Low-pH formula helps replenish soothing moisture. Crisp floral scent. 16.2 fl. oz.
348-100 reg. \$14
\$10.99

**Senses
Cozy Vanilla & Coconut
Body Scrub**
With shea butter.
9 oz. net wt. 530-314
reg. \$24
\$18.99



**Senses
Cozy Vanilla & Coconut
Body Lotion**
With shea butter and vitamin E.
8 fl. oz.
200-208
reg. \$19
\$14.99



**Senses
Cozy Vanilla & Coconut
Hand Soap**
With moisturizing glycerin.
10.1 fl. oz.
178-675
reg. \$14
\$10.99



**Senses Gratitude
Lavender & Cedarwood
Shower Steamers**
Each, 1 oz. net wt.
504-428 reg. \$26
NOW \$15.49
set of 6



**Senses Gratitude
Lavender & Cedarwood
Air Diffuser**
Six diffuser reeds.
Fragrance oil,
2.37 fl. oz.
504-724
reg. \$32
NOW \$18.49



**Senses Gratitude
Lavender & Cedarwood
Room Spray**
3.25 fl. oz.
361-851
reg. \$14
\$10.99



❖ **Senses Gratitude
Lavender & Cedarwood
Candle**
3½" H x 3" diam.
7 oz. net wt. 905-374
reg. \$25
\$19.99



Place candle on trivet or holder before lighting to protect furniture. Never leave burning candles unattended. Keep away from children and pets.

stop and
smell the
flowers



**Senses
Jasmine
Blossom
Collection**
Relax in the fantasy of a beautiful flower garden as the fresh, elegant fragrance of jasmine, lily and ylang-ylang fills the air. Leaves body and hair delightfully scented.

**Hair & Body
Mist**
A refreshing mist, with soothing aloe vera extract.
8 fl. oz.
731-450
reg. \$19
\$14.99

Bubble Bath
Luxurious bubbles gently cleanse.
24 fl. oz.
731-431
reg. \$16
\$12.99

Body Lotion
Moisture-rich with shea butter and vitamin E.
8 fl. oz.
731-446
reg. \$19
\$14.99

All dermatologically tested. Body Lotion and Hair & Body Mist are formulated without parabens, mineral oil, phthalates and dyes.

Avon Shower Brush
 Long handle to reach down back. Brush helps remove dead skin cells as it cleanses. Back of brush features massage nubs. Non-slip, comfort handle has a convenient hanging loop. **904-727** reg. \$10
\$7.99



Senses Shower Gel Blushing Cherry Blossom
 5 fl. oz. **921-847** reg. \$7
\$4.99



Senses Shower Gel Silky Vanilla
 5 fl. oz. **248-140** reg. \$7
\$4.99



Senses Shower Gel Fresh Cucumber & Melon
 5 fl. oz. **400-716** reg. \$7
\$4.99



Senses Shower Gel Juicy Pomegranate & Mango
 5 fl. oz. **248-155** reg. \$7
\$4.99



soak away stress

Senses Bubble Bath
 Each, 24 fl. oz. reg. \$16
\$12.99 each



Cherry Blossom 929-211

Sensitive Skin 875-400

Vanilla Cream 875-669



Orange & Honeysuckle 633-952

Endless Ocean 809-075

Lily & Honeysuckle Blossom 805-524



Cucumber Melon 688-950

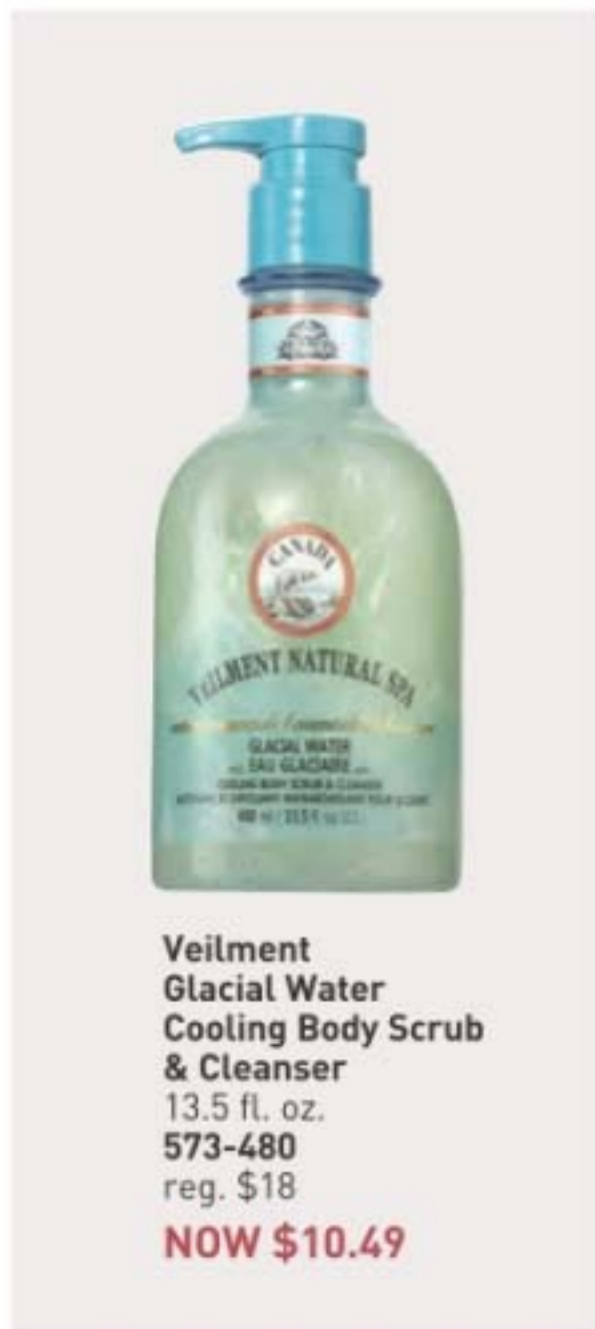
Lavender Garden 381-799

Soft Pink 415-218



**Veilment Himalaya Pink Salt
Body Scrub & Cleanser**
13.5 fl. oz. 991-211 reg. \$18
NOW \$10.49

**Veilment Himalaya Pink Salt
Exfoliating Soap**
5.3 oz. net wt. 260-440 reg. \$8
NOW \$4.49



**Veilment
Glacial Water
Cooling Body Scrub
& Cleanser**
13.5 fl. oz.
573-480
reg. \$18
NOW \$10.49



**Veilment
Black Rose
Body Scrub
& Cleanser**
13.5 fl. oz.
707-969
reg. \$18
NOW \$10.49



**Veilment
Dead Sea Salt
Body Scrub
& Cleanser**
13.5 fl. oz.
781-992
reg. \$18
NOW \$10.49



gotta glow

Get a sun-kissed tan
anywhere...even at home.

Light/Medium
422-307

Medium/Dark
422-326

**Veilment Lumière
Sunless Tanning Serum**
The more drops, the
deeper the tan. Color-
correcting technology
visibly evens tone and
reduces redness. Suitable
for different skin tones.
With skin-nourishing
hemp seed oil and vanilla
extract. Dermatologist-
tested, hypoallergenic and
vegan. Each, 1.01 fl. oz.
reg. \$25
NOW \$14.99 each



Mix and blend
into daily body
moisturizer for
a customized,
natural glow.





AN ORAL CARE
INNOVATION:
**HIMALAYA
PINK SALT**

For a healthy-looking, whiter, brighter smile. Enriched with Himalayan Pink Salt.



Himalaya Pink Salt Intensive Whitening Toothpaste (with Fluoride) 3-Piece Pack

Clinically tested to whiten teeth in one week; 9X more than regular toothpaste without SHMP. 24-hour stain resistance. With sodium fluoride, an anticavity ingredient that helps strengthen enamel. Pink paste. Spearmint flavor. Each, 4.2 oz. net wt. **729-689** reg. \$36

\$26.99 the 3-piece pack

Himalaya Pink Salt Purple Color Corrector + Intensive Whitening Toothpaste (with Fluoride)

Purple toothpaste with advanced color-correcting power. Clinically tested to reduce yellow stains on teeth by 2X after one use; 9X more than regular toothpaste. Visibly whiter teeth in one week. 24-hour stain resistance. Vanilla mint flavor. Formulated without parabens, gluten, phthalates and triclosan. 3.5 oz. net wt. **383-624** reg. \$12 **\$9.49**



Himalaya Pink Salt Purple Whitening Toothbrush

Purple color fades as bristles wear, reminding you to replace. Clinically tested to remove 4X more interdental plaque.* Bristles with 2X the elasticity clean narrow gaps between teeth and the gum line. **383-165** reg. \$6 **\$4.99**

*Compared to LG H&H regular toothbrush with soft bristles.



Himalaya Pink Salt Whitening Toothbrush (Medium)

Bristles are infused with Himalayan pink salt for effective cleansing and a gentle brightening effect. Medium-sized brush. High-tension bristles penetrate narrow gaps. **729-359** reg. \$6 **\$4.99**



Himalaya Pink Salt Intensive Whitening Toothbrush (Large)

Bristles are infused with Himalayan pink salt for effective cleansing and a gentle brightening effect. Large-sized brush. High-tension bristles penetrate narrow gaps. **035-812** reg. \$6 **\$4.99**





Avon Aromatherapy Body Lotion Bye-Bye Stress
De-stress with refreshing spearmint and eucalyptus fragrance oils for stress relief and mental clarity. 5.8 fl. oz. **584-684** reg. \$18
\$13.99



Avon Aromatherapy Body Lotion Sleep Tight Zzz
Unwind with rose and lavender fragrance oils to help promote a restful sleep. 5.8 fl. oz. **584-866** reg. \$18
\$13.99



Avon Aromatherapy Body Lotion Bright Day Ahead
Charge your day with positive energy. With citrus and ginger fragrance oils to uplift your mood. 5.8 fl. oz. **584-670** reg. \$18
\$13.99



Roll-On Anti-Perspirant Deodorant
Each, 1.7 fl. oz. reg. \$4
\$2.99 each

BUY ONE GET ONE FREE

mix or match, any 2 for discount to apply. 1.7 fl. oz. only.



Moisture Therapy Intensive Healing & Repair Hand Cream
For extremely dry skin. Moisturizes through hand washings. Fragrance-free. 4.2 fl. oz. **845-982** reg. \$8
NOW \$4.49



Senses Lip Balm Strawberry 554-219
Cherry 554-223
Each, .14 oz. net wt. reg. \$2
\$1.59 each



Perfumed Liquid Deodorant
Soft floral scent. Aluminum-free. Fast-drying. Easy fingertip application. 2 fl. oz. **889-915** reg. \$8
\$5.99



Avon Microbiome by Reach® Hygiene Deodorant Stick
Floral citrus scent. Aluminum-free. 24-hour odor protection. 2.65 oz. net wt. **524-528** reg. \$16
\$12.99



Roll-On Anti-Perspirant Deodorant
Each, 2.6 fl. oz. reg. \$5
\$3.99 each



Foot Works Intensive Moisture Foot Cream
 Suitable for diabetics.
 2.5 fl. oz.
 069-016
 reg. \$11
\$8.99



Foot Works Arthritis Achy Foot and Muscle Cream
 Contains glucosamine and chondroitin.
 2.5 fl. oz.
 208-400
 reg. \$11
\$8.99



Foot Works Maximum Strength Cracked Heel Cream
 Transforms the look and feel of dry, cracked heels.
 2.5 fl. oz.
 086-762
 reg. \$11
\$8.99



Foot Works Intensive Callus Cream
 Softens and moisturizes dry, rough skin.
 3.2 oz. net wt.
 851-310
 reg. \$11
\$8.99



Foot Works Deodorizing Spray
 Can also be used in footwear.
 3.5 oz. net wt.
 313-236
 reg. \$14
\$10.99



Foot Works Pedicure Tool
 592-712
 reg. \$11
\$8.99
 4 in 1:
 • Fine-grain file
 • Metal file
 • Pumice
 • Brush



Foot Works Pedicure Kit
 Case, 3½" L x 4¾" W.
 121-029
 reg. \$13
\$9.99
 Kit includes:
 • Nail clipper
 • Toenail clipper
 • Scissors
 • Small nail file
 • Cuticle pusher



Bug Guard Plus Picaridin Aerosol Spray
 4 oz. net wt.
 315-243
 reg. \$20
\$15.99



make the great outdoors yours

Our DEET-free repellents protect your family without chemicals that feel harsh on skin. **Bug Guard** repels deer ticks that may carry and transmit Lyme disease.



Bug Guard Plus Picaridin Family-Size Pump Spray
 8 fl. oz.
 827-780
 reg. \$25.50
\$17.99



Bug Guard Plus Picaridin Pump Spray
 4 fl. oz.
 827-756
 reg. \$17.25
\$11.99



Bug Guard Plus Picaridin Towelettes
 Each, 9" L x 5½" W, .3 fl. oz.
 269-562
 reg. \$16
\$12.99 pack of 8



Bug Guard Plus IR3535® Expedition Aerosol Spray SPF 28
 Repels mosquitoes that may transmit West Nile virus for 8 hours. Repels deer ticks for 12 hours.
 4 oz. net wt.
 521-370
 reg. \$20
\$15.99



Bug Guard Plus IR3535® Gentle Breeze SPF 30 Lotion
 4 fl. oz.
 781-940
 reg. \$19
\$14.99



Bug Guard Anti-Itch Spray
 2 fl. oz.
 827-010
 reg. \$15
\$9.99





SALON-INSPIRED FORMULAS

Root Touch-Up
Instantly covers roots and bare spots. With black bean and ginseng. Built-in mirror. Each, .25 oz. net wt. reg. \$20



\$15.99 each

-  Reddish Brown
243-627
-  Light Brown
244-642
-  Dark Brown
245-213
-  Black
245-251

Advance Techniques Daily Shine 2-in-1 Shampoo & Conditioner
11.8 fl. oz.
553-413
reg. \$19
\$14.99



Elastine PropoliThera Damage Repair Shampoo
16.9 fl. oz.
053-082
reg. \$20
NOW \$11.99



Elastine PropoliThera Damage Repair Conditioner
16.9 fl. oz.
638-681
reg. \$20
NOW \$11.99



Elastine PropoliThera Volumizing Shampoo
16.9 fl. oz.
892-607
reg. \$20
NOW \$11.99



Elastine PropoliThera Volumizing Conditioner
16.9 fl. oz.
892-870
reg. \$20
NOW \$11.99



Elastine PropoliThera Hair Mask
10.1 fl. oz.
150-301
reg. \$20
NOW \$11.99



Elastine PropoliThera Hair Oil Serum
5.7 fl. oz.
895-190
reg. \$23
NOW \$12.49



Elastine PropoliThera Hair Deep Conditioning Treatment Cap
053-761
reg. \$9
\$6.99



Elastine PropoliThera Serum Treatment
7.8 fl. oz.
359-821
reg. \$23
\$17.99



HEMP FOR HAIR

Elastine HempharmX Shampoo and conditioner with cold-extracted hemp seed oil. Contains omega 3-6-9, known to help moisturize and nourish hair and prevent breakage with weightless hydration that delivers full volume. Vegan formulas. Both silicone-free. Shampoo is sulfate-free.

Elastine HempharmX Hydrating Shampoo
13.5 fl. oz. 359-836
reg. \$24

NOW \$14.99

Elastine HempharmX Hydrating Conditioner
13.5 fl. oz. 360-544
reg. \$24

NOW \$14.99



Elastine Salon de Color Color Vibe Purple Shampoo
8.4 fl. oz. 436-109
reg. \$19

NOW \$10.99



Elastine Salon de Color Color Vibe Purple Conditioner
8.4 fl. oz. 436-955
reg. \$19

NOW \$10.99



KICK BRASS

HAIR CARE

Elastine Botanicals Rosemary & Sea Salt Volumizing Shampoo
6.7 fl. oz. 240-556
reg. \$7

NOW \$3.49



Elastine Botanicals Rosemary & Sea Salt Volumizing Conditioner
6.7 fl. oz. 246-831
reg. \$7

NOW \$3.49



Elastine Moisture Essentials Volume Shampoo
12.7 fl. oz. 495-106
reg. \$9

NOW \$4.99



Elastine Moisture Essentials Volume Conditioner
12.7 fl. oz. 495-110
reg. \$9

NOW \$4.99



HAVE A GREAT HAIR DAY, EVERY DAY

CHI®'s unique blend of botanicals includes aloe vera, pomegranate, hibiscus and other nutrient-rich ingredients for healthy-looking hair.

**CHI® Essentials
Moisturizing Conditioner**
12 fl. oz. 589-409
reg. \$23

NOW \$13.49

**CHI® Essentials
Replenishing Shampoo**
12 fl. oz. 589-140
reg. \$23

NOW \$13.49



**Avon
Blow-Dry
Round Hairbrush**
504-800
reg. \$19
\$14.99

**Avon
Detangling
Comb**
504-820
reg. \$8
\$5.99

**Avon
Detangling
Hairbrush**
504-815
reg. \$13
\$9.99

**Avon
Compact
Hairbrush**
504-743
reg. \$10
\$7.99

**CHI® Essentials
Revive Keratin +
Bonding
Restoring
Shampoo**
12 fl. oz. 451-192
reg. \$25
NOW \$14.49

**CHI® Essentials
Revive Keratin +
Bonding
Restoring
Conditioner**
12 fl. oz. 451-211
reg. \$25
NOW \$14.49



Dr. Groot Scalp Fortifying Serum Treatment
Moisturizes and helps support healthy hair roots. 6.7 fl. oz. 782-271 reg. \$35
\$29



Dr. Groot Scalp Fortifying Hair-Thickening Shampoo
With coconut oil, cleanses as it helps moisturize dry scalp and hair. 13.5 fl. oz. 778-014 reg. \$35
\$29



Dr. Groot Premium Scalp Cleansing Brush
Helps reinvigorate scalp health and stimulate circulation. 065-776 reg. \$20
\$16



Dr. Groot Anti-Dandruff Scalp Care 2-in-1 Shampoo and Conditioner
Contains 3% salicylic acid, biotin, caffeine, rosemary and menthol. 10.1 fl. oz. 451-431 reg. \$30
\$22.99



Dr. Groot Anti-Dandruff Scalp Care Shampoo
Contains 3% salicylic acid, biotin, caffeine, rosemary and menthol. No silicones. 10.1 fl. oz. 451-412 reg. \$30
\$22.99



Dr. Groot Professional Bonding System 01 Bond Fortifying Shampoo
Helps fortify hair from the roots and visibly restore smoothness. 13 fl. oz. 701-607
\$30



Dr. Groot Professional Bonding System 02 Keratin Water Treatment
Water-to-cream formula. Hair looks instantly smoother. Use 2X-3X a week. 6.7 fl. oz. 701-611
\$30



Dr. Groot Professional Bonding System 03 Bond Fortifying Conditioner
Instantly helps minimize frizz.* 8.4 fl. oz. 701-865
\$30
*Based on a clinical test of 19 hair tresses.



Dr. Groot Professional Bonding System 04 Bond Fortifying Instant Repair Serum
Restorative leave-in serum. Apply to damp or dry hair. 4.2 fl. oz. 702-130
\$30

WANT GREAT HAIR? START AT THE SCALP.



Dr. Groot Scalp Revitalizing Solution
Think of scalp care as an extension of skin care. With **biotin** and **capsulated prebiotics**, these formulas offer a uniquely customized solution that gets to the root of your problem.

Hair Thickening Shampoo
Helps hair look thicker and fuller. Infused with biotin and prebiotics. 13 fl. oz. 715-064
\$30

Purifying Clay Shampoo
Instantly purify roots, hydrate dry ends. With three kinds of clay (white, herbal, glacial) plus biotin and salicylic acid. 13 fl. oz. 715-098
\$30

Scalp Relief Tonic
Helps hydrate dry scalp. With calming chamomile, moisturizing niacinamide and cooling menthol. 4.73 fl. oz. 717-110
\$30

Scalp Soothing Shampoo
Helps refresh, moisturize and comfort your scalp. With biotin and cica extract. 13 fl. oz. 715-083
\$30

Miracle in Shower Treatment
Hair looks smoother and healthier instantly. With nourishing arginine, panthenol, niacinamide and salicylic acid. 8.4 fl. oz. 715-451
\$30



❖ **Homestar Floor Cleaner**
Nozzle provides targeted application to apply directly to floor. Dries quickly for a streak-free shine. Great for laminate, sealed hardwood and sealed stone. Fresh lavender scent. 25.3 fl. oz. **149-980**
reg. \$9.99
\$8.99



❖ **Homestar Multi Purpose Cleaner**
Bleach-free. With citric acid, orange oil and baking soda. Natural citrus scent. 16.9 fl. oz. **365-345**
reg. \$9.99
\$7.99



❖ **Fresh Fiji Lavender Pillow Spray***
A fine mist for pillowcases, linens and bedding, with the calming scent of lavender to help promote relaxation of body and mind. With natural essential oils. 13.5 fl. oz. **508-859**
reg. \$11.99
\$8.99

*Safe for most machine-washable fabrics. Dermatologist-tested. Let dry before skin contact. Use in a well-ventilated area. Not for use on skin or pets. Keep out of reach of children.



❖ **Fresh Fiji Sheet Detergent**
Laundry detergent in a single sheet! Seven-enzyme stain-removing blend. 30 easy-dissolving detergent sheets. Each sheet, 9" x 8". **Fresh 184-203**
reg. \$22.99
\$16.99



❖ **Homestar Bathroom Cleaner**
Fights tough soap scum, limescale, calcium and grime. Fresh green apple scent. 25.4 fl. oz. **092-635**
reg. \$11.99
\$10.49



❖ **Sirius Groom Odor Eliminator for Upholstery & Fabrics**
Nature-derived rice and barley to absorb and neutralize odors. Light baby powder scent. For fabric and carpet use only, do not spray on pets. 13.5 fl. oz. **247-565**
reg. \$12.99
\$9.99
NOT FOR USE ON PETS



❖ **Sirius Groom Pet Grooming Mist**
Softens, soothes and hydrates your dog's skin and coat for instant freshness. Perfect for in-between washes. Moisturizing formula with centella asiatica, rosemary, oatmeal and provitamin B5. Long-lasting baby powder scent. 5.1 fl. oz. **758-794**
reg. \$12.99
\$9.99



❖ **Homestar Odor Eliminator for Fridge**
No-spill solid gel formula neutralizes fridge odors. Lasts up to 3 months. 14.8 oz. net wt. **367-697**
reg. \$7.99
\$6.99



❖ **Homestar Foaming Toilet Bowl Cleaner**
Fights toilet rings and stains. Includes five pouches. 10.6 oz. total net wt. **090-298**
reg. \$12.99
\$9.99



❖ **Sirius Groom Shampoo for Dogs**
Anti-inflammatory oatmeal protects and soothes skin. pH-balanced formula. Nature-derived ingredients. 16.2 fl. oz. **Baby Powder 247-493**
reg. \$14.99
\$11.99



floral flourishes

Bring on spring...with sweet petal sleeves, scattered flower patterns and bright, bold blooms.



ALL NEW

❖ **Button Front Skirt**
 White crepe skirt features decorative buttons with a faux-wood finish. Flat-front waistband with an elastic back. Calf-length; lined through the knee. Body: 100% rayon. Lining: 100% polyester. Center back length: 28" on M; 29" on 1X. Machine wash, line dry. Imported.
 XS(0-2) 669-967
 S(4-6) 669-986
 M(8-10) 670-034
 L(12-14) 670-068
 XL(16) 670-159
 1X(18W-20W) 670-163
 2X(22W-24W) 670-178
 3X(26W-28W) 670-182
 reg. \$44.99
\$34.99

Island Sandal sold on page 127.

Sunglasses not sold.



❖ **Petal Sleeve Top**
 Top features short petal sleeves and scallop-edged neckline. Polyester/spandex. Center back length: 22" on M; 24½" on 1X. Machine wash, line dry. Imported.

Turquoise	Yellow
XS(0-2) 667-319	XS(0-2) 667-998
S(4-6) 667-653	S(4-6) 668-520
M(8-10) 667-763	M(8-10) 668-918
L(12-14) 667-816	L(12-14) 669-273
XL(16) 667-983	XL(16) 669-288
1X(18W-20W) 669-383	1X(18W-20W) 669-713
2X(22W-24W) 669-546	2X(22W-24W) 669-819
3X(26W-28W) 669-603	3X(26W-28W) 669-948

 reg. \$39.99
\$29.99 each

❖ **Island Sandal**
 White leatherlike sandal features halter back and peep toe. Inside elastic on halter strap and padded insole. Half sizes should size up. Man-made materials. Imported.

6 670-220	8 671-633	10 671-872
7 670-474	9 671-868	11 672-056

 reg. \$39.99
\$29.99

NEW

❖ Scatter Floral Top

Navy top with white floral print features double-layer flutter sleeves and tie detail at neckline. Elastic smocking at front and back top panels. Polyester/spandex. Center back length: 23" on M; 24½" on 1X. Machine wash, line dry. Imported.

XS(0-2) 672-238
 S(4-6) 672-300
 M(8-10) 672-314
 L(12-14) 672-329
 XL(16) 672-348
 1X(18W-20W) 672-352
 2X(22W-24W) 672-443
 3X(26W-28W) 672-500
 reg. \$44.99

\$34.99

DOUBLE-LAYER
 flutter sleeves
 and tie detail
 at neckline



flower
power

NEW

❖ Garden Striped Button-Down Top

Floral- and stripe-print collared shirt features button-front placket and cuff sleeves. Relaxed/oversized fit. Polyester/cotton. Center back length: 27½" on M; 29" on 1X. Machine wash and dry. Imported.

XS(0-2) 676-453
 S(4-6) 676-530
 M(8-10) 676-620
 L(12-14) 677-699
 XL(16) 677-741
 1X(18W-20W) 677-890
 2X(22W-24W) 677-961
 3X(26W-28W) 677-976
 reg. \$53.99

\$42.99

**RELAXED/
 OVERSIZED**
 fit

peachy & beachy

ALL NEW

❖ **Maxi Lounge Dress**
 Peach gauze sleeveless maxi dress features round neckline, side slits and a relaxed fit. 100% cotton. Center back length: 47" on M and 1X. Machine wash, line dry. Imported.
 XS(0-2) **672-568**
 S(4-6) **672-769**
 M(8-10) **672-807**
 L(12-14) **672-879**
 XL(16) **673-067**
 1X(18W-20W) **673-158**
 2X(22W-24W) **673-344**
 3X(26W-28W) **673-363**
 reg. \$49.99

\$39.99

Island Sandal sold on page 127.
 Sunglasses not sold.

OVERSIZED cotton canvas tote with front pocket



RELAXED FIT maxi dress with side slits

Seaside Charm Anklet Set sold on page 131.

tote to toes...



❖ Market Tote

Natural oversized canvas tote with contrasting peach straps and trim. Features front pocket. 100% cotton. 23 1/4" L x 8" W x 14" H. Handle drop: 10 1/2" L. Imported.
676-161
 reg. \$28.99
\$21.99

Seaside Charm Anklet Set

Two-piece goldtone sets with colored beads, charms and pearly accents. 9" L with 1" extender. reg. \$12.99

\$9.99 each set



fresh
florals



V-NECKLINE
and flutter
sleeves

❖ **Spring Floral Dress**

Light green chiffon dress with fuchsia floral print. Features V-neckline, flutter sleeves, ruffle hem and self-tie fabric belt at waist. Back zipper closure. Body and lining: 100% polyester.

Center back length: 40½" on M; 42" on 1X. Machine wash (remove self-tie fabric belt before washing), line dry. Imported.

XS(0-2) 610-189
S(4-6) 610-208
M(8-10) 610-212
L(12-14) 610-231
XL(16) 610-246
1X(18W-20W) 610-270
2X(22W-24W) 610-318
3X(26W-28W) 610-360
reg. \$56.99
\$44.99

top picks



Metallic Espadrilles sold on page 160.



FASHION

❖ **Relaxed V-Neck Pullover**

Fuchsia V-neck top with rolled sleeves and a relaxed fit. 100% polyester. Center back length: 26½" on M; 28" on 1X. Machine wash and dry. Imported.

XS(0-2) 608-967
S(4-6) 609-007
M(8-10) 609-011
L(12-14) 609-030
reg. \$46.99
\$36.99

XL(16) 609-045
1X(18W-20W) 609-079
2X(22W-24W) 609-098
3X(26W-28W) 609-117

❖ **Eyelet Top**

Navy eyelet top. Features round neckline with front tie and short puff sleeves. Polyester/spandex. Center back length: 23½" on M; 25" on 1X. Machine wash, line dry. Imported.

XS(0-2) 610-079
S(4-6) 610-083
M(8-10) 610-098
L(12-14) 610-102
reg. \$42.99
\$32.99

XL(16) 610-117
1X(18W-20W) 610-121
2X(22W-24W) 610-136
3X(26W-28W) 610-155

❖ **Chambray Pants**

Blue denim-colored lightweight chambray pants. Features front pockets, a flat front with back elastic waistband and pull-on styling. Cotton/polyester. Inseam: 26½" on all sizes. Machine wash, line dry. Imported.

XS(0-2) 609-140
S(4-6) 609-155
M(8-10) 609-193
L(12-14) 609-227
reg. \$49.99
\$39.99

XL(16) 609-246
1X(18W-20W) 609-250
2X(22W-24W) 609-265
3X(26W-28W) 609-270

❖ **Ribbed Lounge Set**

Grey ribbed two-piece lounge set with contrasting ivory scallop detail on trim. Top features round neckline and short sleeves. Pants feature side-seam pockets and elastic waist with drawstring. Polyester/spandex. Center back length: 26" on M; 27½" on 1X. Inseam: 28½" on all sizes. Machine wash and dry. Imported.
 XS(0-2) 607-004
 S(4-6) 607-019
 M(8-10) 607-095
 L(12-14) 607-129
 XL(16) 607-171
 1X(18W-20W) 607-296
 2X(22W-24W) 608-254
 3X(26W-28W) 608-288
 reg. \$49.99
\$39.99 the set



IVORY SCALLOP detail on trim

2-PIECE SET

comfy & cool

Easygoing styles to wear and pair.

LIGHTWEIGHT SLIDE can be worn indoors or outdoors

❖ **Chunky EVA Slide**

Ivory lightweight EVA slide with molded ribbed upper. Can be worn indoors or outdoors. Half sizes should size down. Man-made materials. Imported.
 S(5-6) 606-869
 M(7-8) 606-979
 L(9-10) 606-983
 XL(11) 606-998
 reg. \$19.99
\$14.99



Serene Seas Necklace sold on page 148.

lovely in lace

❖ **Lace-Sleeve Top**

Lilac soft-knit top with round neckline and lacy sleeves with cuff. Body: polyester/spandex. Lace contrast: 100% polyester. Center back length: 23" on M; 24" on 1X. Machine wash, line dry. Imported.
 XS(0-2) 573-260
 S(4-6) 573-274
 M(8-10) 573-293
 L(12-14) 573-312
 XL(16) 573-661
 1X(18W-20W) 573-695
 2X(22W-24W) 573-733
 3X(26W-28W) 573-790
 reg. \$39.99
\$29.99



❖ **Studded Sleeve Top**

Whisper blue soft-knit top with stud details and scoop neck. Polyester/spandex. Center back length: 23" on M; 24" on 1X. Machine wash, line dry. Imported.
 XS(0-2) 571-028
 S(4-6) 571-090
 M(8-10) 571-138
 L(12-14) 571-142
 XL(16) 571-381
 1X(18W-20W) 571-468
 2X(22W-24W) 571-821
 3X(26W-28W) 571-912
 reg. \$42.99
\$32.99



lax goes luxe

Dress up your everyday with an of-the-moment chic shade.



**BUTTON
PLACKET**
with pleated
details

**2-PIECE
SET**

**STRAIGHT-
LEG
fit**

❖ Relaxed 2-Piece Set

Plum top features mock collar with a V-neckline, button-front placket with pleat detailing and long sleeves with button cuff. Matching straight-leg pants feature a center-front seam, elastic waistband with functional drawstring and side seam pockets. 100% polyester. Center back length: 26" on M; 27" on 1X. Inseam: 30" on all sizes. Machine wash, line dry. Imported.

XS(0-2) 571-950
S(4-6) 571-999
M(8-10) 572-010
L(12-14) 572-282
XL(16) 572-301
1X(18W-20W) 572-316
2X(22W-24W) 572-335
3X(26W-28W) 572-392
reg. \$56.99

\$44.99 the set

Slip-on Espadrille sold on page 137.



pretty in print

❖ Patterned Dress

Black/white-print dress features round neckline with keyhole opening, cinched elastic waist, short sleeves and mid-calf length with shark-bite hem. Polyester/spandex. Center back length: 46" on M; 47" on 1X. Machine wash, line dry. Imported.

XS(0-2) 572-517 XL(16) 572-794
S(4-6) 572-631 1X(18W-20W) 572-866
M(8-10) 572-737 2X(22W-24W) 573-035
L(12-14) 572-760 3X(26W-28W) 573-054
reg. \$56.99

\$44.99

❖ Pebbled Clutch

Tan pebbled leatherlike clutch with top zipper closure, front hand strap and inside double-slotted pocket. Man-made materials. 10½" L x 7¼" W x ½" D. Imported.

574-084
reg. \$32.99

\$24.99

❖ Slip-on Espadrille

Tan pebbled leatherlike espadrille with jute rope midsole, knit-fabric toe cap and rubber outsole. Pull tab at back for easy on/off. Half sizes should size up. Man-made materials. Imported.

6 574-012 8 574-046 10 574-065
7 574-027 9 574-050 11 574-070
reg. \$42.99

\$32.99



over the rainbow

Shine bright in a show-stopping spectrum of shades.



ALL NEW

Bejeweled Bliss Collection

Pastel-colored rectangular stones set in silvertone.

Necklace

16½" L with 3½" extender.
672-185
reg. \$24.99

\$19.99

Drop Earrings

Approx. 2¼" L. Pierced.
672-190
reg. \$12.99

\$9.99

Bracelet

7¼" L with 1" extender.
672-219
reg. \$16.99

\$12.99



garden variety

Dainty designs brimming with spring charm.

ALL NEW
Delicate Garden Collection
 Goldtone with multicolor and clear stones and opalesque beads.

Ring Set
 Set of three includes two solid goldtone rings (one of which is textured).
 Sizes:
 6 673-454
 8 673-511
 10 673-545
 reg. \$12.99
\$9.99 the set



3-Piece Set
 With pink and green flower motifs. Necklace, 16 1/2" L with 3/2" extender. Bracelet, 7 1/2" L with 1" extender. Pierced drops, 1" L.
673-420
 reg. \$22.99
\$16.99 the set



necklace, bracelet and earring set



sets of 3 rings

ALL NEW

Spring Cocktail Jewel Ring
 Faceted glass stone, 1/2" W, with crystal halo setting. reg. \$16.99
\$12.99 each



Blue (cushion-cut)/ SILVERTONE	Purple (pear-shaped)/ SILVERTONE
6 674-518	6 675-280
8 674-958	8 675-347
10 674-962	10 675-571
Peach (oval-cut)/ GOLDTONE	Green (emerald-cut)/ GOLDTONE
6 675-677	6 675-624
8 675-681	8 675-639
10 675-696	10 675-643

ALL NEW

Charming Wishes Beaded Bracelet
 Faceted round colored beads with goldtone charms accented with stones. Stretches to fit most.
 Purple 674-063 Green 674-298
 Blue 674-317 Pink 674-173
 reg. \$12.99
\$9.99 each



ALL NEW
Minimalist Essentials
Collection
 Sets in goldtone or silvertone.

Necklace Set
 Set of three. 16½" L with 3½" extender.
 Goldtone 677-980
 Silvertone 678-088
 reg. \$16.99

\$12.99 each set

Earring Pack
 Three-pair packs. Includes studs with clear stone accent, bar huggies and angular hoops. Ranges from ¼"-1" L. Pierced.
 Goldtone 678-183
 Silvertone 678-460
 reg. \$12.99

\$9.99 each pack



sets of 3 necklaces

sets of 3 bracelets

3-pair earring packs

Bracelet Set
 Set of three. 7¼" L with 1" extender.
 Goldtone 678-126
 Silvertone 678-150
 reg. \$12.99
\$9.99 each set

ALL NEW
Sunlit Collection
 Paperclip-style, links and blooms set in goldtone.

Paperclip Long Layered Necklace
 30" L with 3½" extender. Lobster closure.
 678-676 reg. \$22.99
\$16.99

Paperclip Bracelet
 7¼" L with 1" extender. Lobster closure.
 678-680 reg. \$12.99
\$9.99

Link Hoop Earrings
 1¼" L. Pierced.
 678-695 reg. \$16.99
\$12.99

Flower Bloom Earrings
 Drops, 2" L. Pierced.
 678-714 reg. \$16.99
\$12.99

Petal Drop Earrings
 1¼" L. Pierced.
 678-700 reg. \$16.99
\$12.99



modern
 metals



necklace and earring set



Rose Garden Pearly Collection
Colored glass stones and pearlesque beads set in goldtone.

Necklace and Earring Set
16 1/2" L with 3 1/2" extender.
Pendant, 1" L. Lobster closure.
Pierced earrings, 1" L.
608-474
reg. \$22.99
\$16.99 the set

Pearly Bouquet Stretch Watch
Mother-of-pearl dial set in goldtone, 34mm diam. case. Pearly band stretches to fit most. Water-resistant to 3 ATM.
608-345
reg. \$49.99 **\$39.99**

Necklace
Three-row necklace, 18 1/2" L with 3 1/2" extender. Lobster closure.
608-460
reg. \$32.99
\$24.99

Ring
1" W.
6 608-565
8 608-732
10 608-747
reg. \$12.99
\$9.99

coming up roses

A brilliant bouquet accented with pearlesque perfection.





shimmery shades

necklace and earring sets

Pastel Treasures Collection
Goldtone with colored stones and clear stone accents.

Necklace and Earring Set
16 1/2" L with 3 1/2" extender. Pendant, approx. 3/4" W. Pierced earrings, 1/2" L.
Blue 610-542
Rose 610-470
reg. \$22.99
\$16.99 each set

Drop Earrings
Approx. 1 3/4" L. Pierced.
Blue 610-648
Rose 610-600
reg. \$16.99
\$12.99 each pair



- A 609-466 B 609-485 C 609-490 D 609-519
- E 609-523 G 609-538 J 609-600 K 609-614
- L 609-629 M 609-633 N 609-648
- O 609-360 P 609-652 R 609-686 S 609-758
- T 609-762 V 609-777

Pearly Charm Initial Necklace
Goldtone chain with pearly pendant. 16 1/2" L with 3 1/2" extender. Pendant, 1" L.
reg. \$9.99
\$7.99 each



Pawprints of Love Bracelet and Ring Set
Includes goldtone paperclip chain bracelet with cutout and ring with pavé crystal stones. Bracelet, 7 1/4" L with 1" extender. Lobster closure

Dog Mom	Cat Mom
6 609-815	6 609-781
8 610-030	8 609-796
10 610-064	10 609-800

reg. \$16.99
\$12.99 each set

bracelet and ring sets

pastel perfection

A pretty palette of cool-toned hues.



Serene Seas Collection
Colored glass beads set in goldtone.

Necklace
With goldtone faceted round beads and chain tassel drop. 16½" L with 3½" extender. Drop, 3½" L. 573-987 reg. \$22.99

\$16.99

Earrings
With CZ accent stone. Approx. 1¼" L. Pierced. 573-991 reg. \$9.99

\$7.99

Bracelet
With goldtone faceted round beads and chain tassel drop. Stretches to fit most. 574-008 reg. \$16.99

\$12.99

Petal Perfection Collection
Filigree flowers with glass rhinestone accents set in goldtone.

Necklace
With accent goldtone beads. 16½" L with 3½" extender. Largest flower, 2" L. 572-411 reg. \$22.99
\$16.99

Earrings
2" L drops. Pierced. 572-464 reg. \$12.99
\$9.99

Watch
10" L with 34mm diam. case. Folding clasp closure. Water-resistant to 3 ATM. 572-407 reg. \$46.99
\$36.99



filigree finery

Petals adorned with delicate details.

harness healing

with the power of semi-precious stones.

Gemstone Whispers Layered Necklace

Layered necklace with semi-precious stone set in goldtone. 20" L with 3½" extender. Lobster closure. Pendant, 1½" L.

Grey Agate **574-983**

Aventurine **574-979**

Sodalite **574-964**

Rose Quartz **574-950**
reg. \$19.99

\$14.99 each

Grey Agate:

builds up your strength, increases focus and provides stability.

Aventurine:

opens the spirit to confidence, luck and the manifestation of goals.

Sodalite:

brings balance, harmony and trust into your life with a grounding energy.

Rose Quartz:

sparks forgiveness, compassion and unconditional love.



captivating colors

with gem-like luster.



Green/Goldtone
574-141



Blue/Silvertone
574-156



Black/Goldtone
574-160



Multicolor/
Goldtone
574-137

Hue Whisper Collection

Colored baguette glass stones.

Earrings

Drops, 1" L. Pierced.
reg. \$16.99

\$12.99 each pair

set of 2 rings

Green/Goldtone

6 **574-649**

8 **574-653**

10 **574-668**

Multicolor/Goldtone

6 **574-228**

8 **574-615**

10 **574-620**



Blue/Silvertone

6 **574-730**

8 **574-907**

10 **574-945**

Ring Set Set of two. Larger band, ¾" W. reg. \$16.99

\$12.99 each set

STERLING SILVER



Sterling Silver Rose of Love CZ Collection
CZ stones set in .925 sterling silver.

Necklace
17" L with 1" extender. Pendant, 1" L. Spring-ring closure. 6-carat total weight equivalent.
621-493
reg. \$58.99
\$44.99

Ring
½" W. 6-carat total weight equivalent.
Sizes:
5 **621-660** 8 **622-117**
6 **621-680** 9 **622-136**
7 **621-694** 10 **622-360**
reg. \$58.99
\$46.99



necklace and earring set

Timeless Grace Collection
Goldtone with intricate filigree detail.

Station Necklace and Earring Set
Adorned with clear glass stones. 30½" L with 3½" extender. Pierced earrings, approx. 1" L.
610-428 reg. \$32.99
\$24.99 the set

Pull-Cord Bracelet
Adorned with clear glass stones. Adjusts to fit most.
610-451 reg. \$16.99
\$12.99



Sterling Silver Bow of Affection CZ Collection
CZ stones set in .925 sterling silver.

Necklace
17" L with 1" extender. Pendant, 1" L. Spring-ring closure. 6-carat total weight equivalent.
622-380 reg. \$49.99
\$39.99

Earrings
Pierced studs, ½" L. 6-carat total weight equivalent.
622-600 reg. \$44.99
\$34.99

Hoop Earrings
Approx. 1½" L. Pierced.
610-466 reg. \$12.99
\$9.99

ALL NEW
Men's
Stainless Steel
Jet-Set Collection
Set in durable
stainless steel.

Precision Watch
Black leatherlike
faux-croc strap,
10" L. 42mm
diam. case with
faux chronometers
on dial. Water-
resistant to 3 ATM.
679-691
reg. \$42.99
\$32.99

**CZ Dog Tag
Necklace**
Two-tone: stainless
steel with black
ion plating and
CZ stone accents.
24" L.
Pendant, ¾" L.
Lobster closure.
679-782
reg. \$32.99
\$24.99

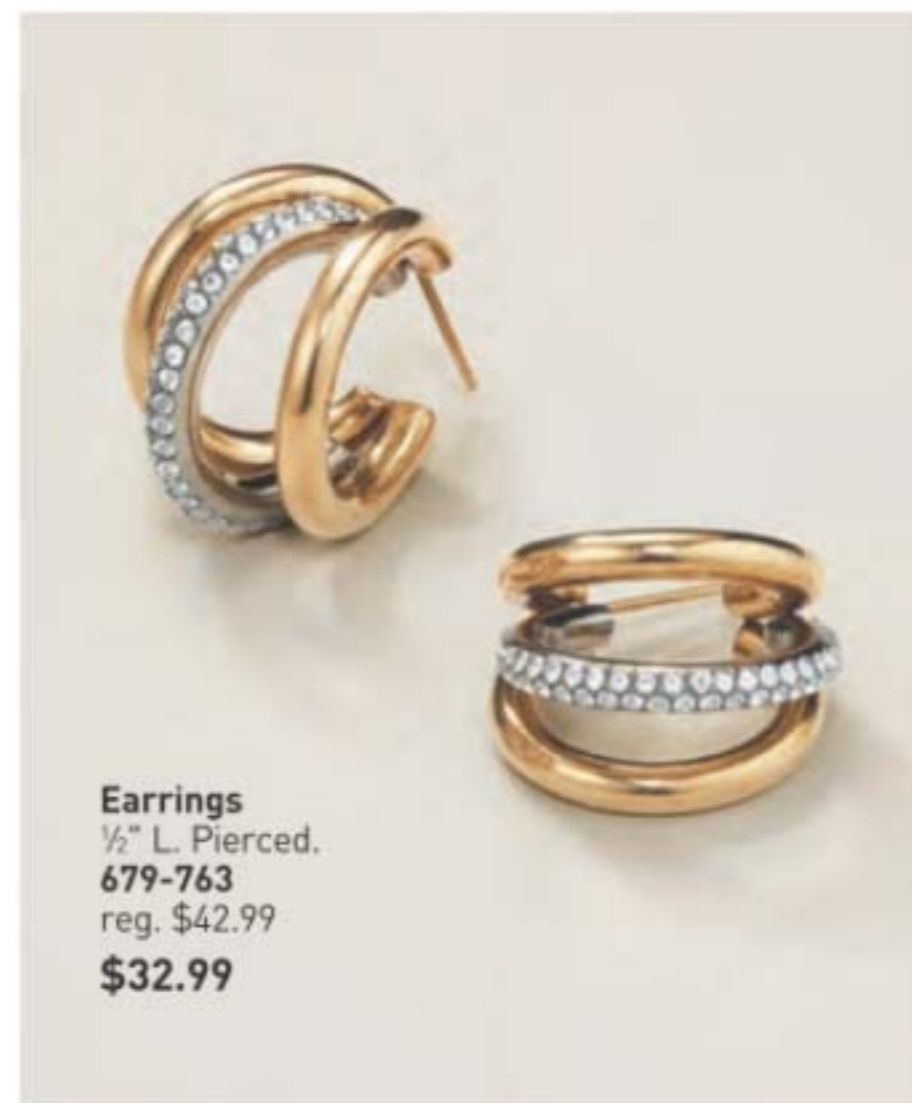
Band Ring
Two-tone: stainless steel
with black ion plating.
Sizes:
9 679-797 12 679-820
10 679-801 13 679-835
11 679-816
reg. \$29.99
\$22.99



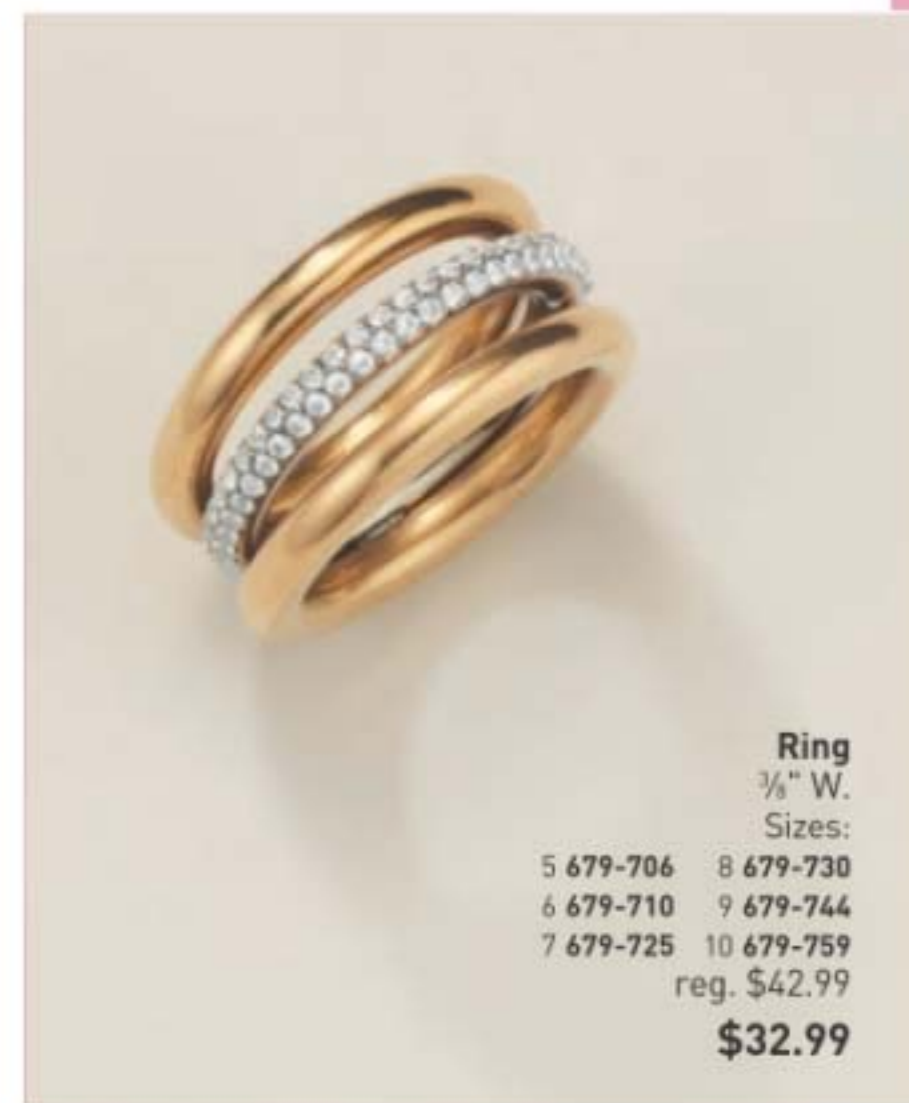
Bracelet
Black onyx beads
and stainless steel
accents on a braided
leatherlike bracelet.
Magnetic clasp.
One size fits most.
679-840
reg. \$29.99
\$22.99

twice as nice

Two-toned durable metals that make a lasting impression.



Earrings
½" L. Pierced.
679-763
reg. \$42.99
\$32.99



Ring
¾" W.
Sizes:
5 679-706 8 679-730
6 679-710 9 679-744
7 679-725 10 679-759
reg. \$42.99
\$32.99



Cuff Bracelet
One size fits most.
679-778
reg. \$49.99
\$39.99

ALL NEW

Stainless Steel Luxe Two-Tone Orbit Collection
Stainless steel with CZ and gold ion-plated accents. Ion plating is a process that enhances the durability and brightness of the gold finish, providing long-lasting wear and a brilliant shine.

Marrakesh



Vibes



◆ **Embroidered Tunic**

Black V-neck tunic with blue floral embroidery at neckline and placket.

Features decorative buttons on placket and bell sleeves. 100% rayon (excluding embroidery).

Center back length: 25½" on M; 26" on 1X. Machine wash, line dry. Imported.

XS(0-2) 614-662

S(4-6) 614-720

M(8-10) 614-734

L(12-14) 614-973

XL(16) 615-673

1X(18W-20W) 615-783

2X(22W-24W) 616-116

3X(26W-28W) 616-450

reg. \$49.99

\$39.99



set of 4

Saharan Sunset Collection

Goldtone with colored beads or tassels.

Layered Necklace

Three-layered necklace with hanging charms. Longest layer, 20" L with 3½" extender; shortest layer, 16" L. 616-631 reg. \$22.99

\$16.99

Bracelet Set

Set of four with hanging charms. Stretches to fit most. 616-703 reg. \$16.99

\$12.99 the set

Tassel Earrings

With CZ stone accent. Approx. 3" L. Pierced. 616-684 reg. \$12.99

\$9.99



**Arabesque Elegance
Collection**
Intricate two-toned
scalloped filigree designs.

**Necklace and
Earring Set**
Goldtone chain, 31½" L
with 3½" extender. Pendant,
2" L. Pierced drops, 2" L.
614-313
reg. \$19.99

\$14.99 the set

Stretch Bracelet
Stretches to fit most.
614-328
reg. \$19.99

\$14.99

necklace and
earring set



Ornate Details

Bold Designs



◆ **Puff Sleeve Dress**
Red linen puff-sleeve
shift dress with contrast
stitching at neckline.
Linen/rayon. Center
back length: 37" on M;
38" on 1X. Machine wash,
line dry. Imported.
XS(0-2) 612-765
S(4-6) 612-909
M(8-10) 613-025
L(12-14) 613-059
XL(16) 613-431
1X(18W-20W) 613-522
2X(22W-24W) 613-685
3X(26W-28W) 614-280
reg. \$56.99
\$44.99



❖ **Tassel-Front Blouse**
Ivory blouse with blue embroidery print. Features tie-front with tassels and long sleeves with button cuff. 100% polyester. Center back length: 22" on M; 24" on 1X. Machine wash, line dry. Imported.
XS(0-2) 616-923
S(4-6) 616-942
M(8-10) 617-092
L(12-14) 617-150
XL(16) 617-164
1X(18W-20W) 617-221
2X(22W-24W) 617-260
3X(26W-28W) 617-293
reg. \$44.99
\$34.99

Intricate Patterns

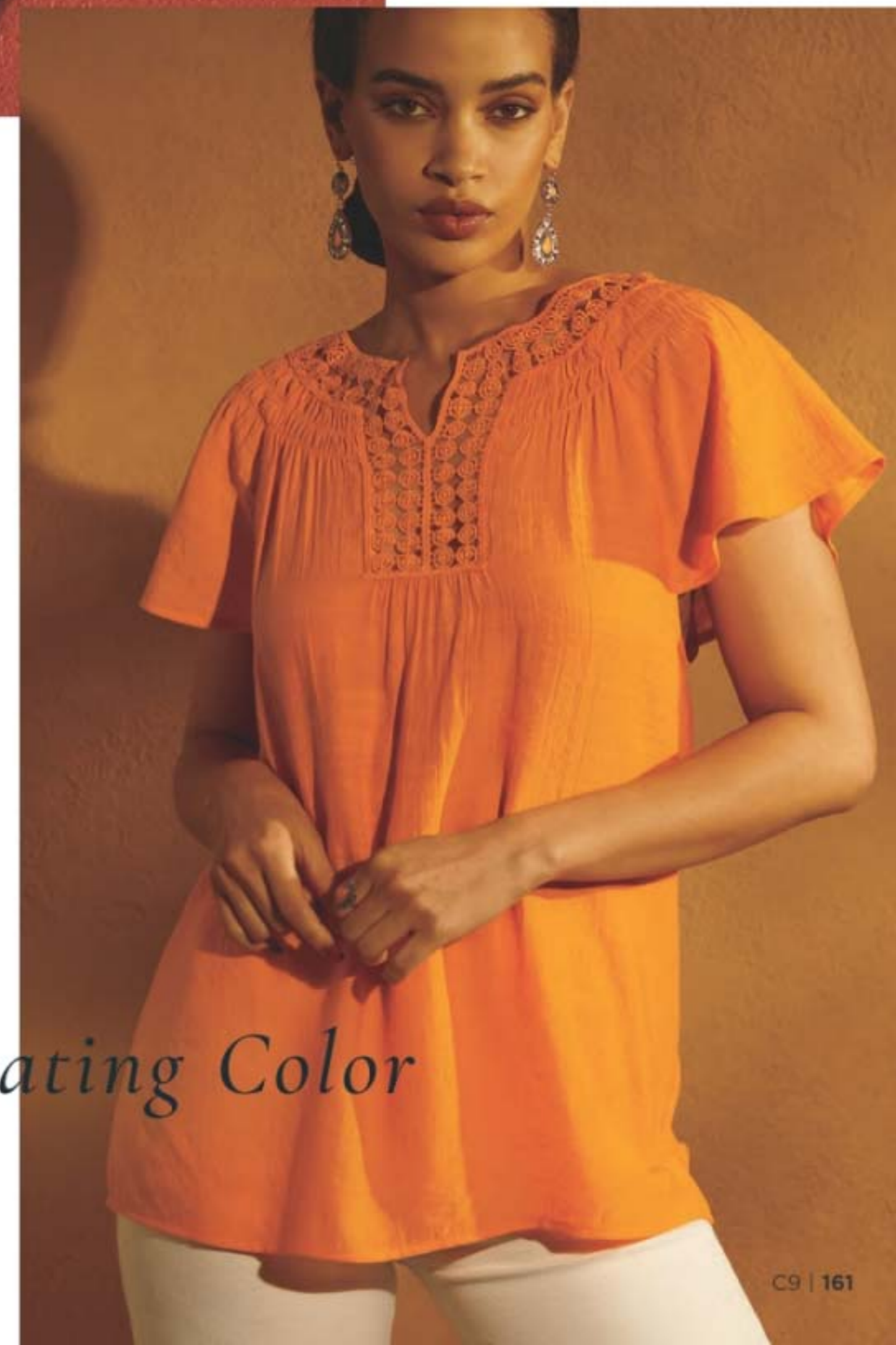


Desert Mirage Collection
Goldtone with warm enamel colors.
Drop Earrings
Approx. 2½" L. Pierced.
620-061 reg. \$16.99
\$12.99
Statement Ring
With a semi-precious amber-colored stone, ¾" W.
6 620-076
8 620-315
10 620-941
reg. \$12.99
\$9.99



❖ **Metallic Espadrille**
Natural and golden woven espadrille with jute rope midsole, knit fabric toe cap and rubber outsole. Back pull-tab for easy on/off. Man-made materials. Imported.
6 619-588 9 619-980
7 619-664 10 620-023
8 619-679 11 620-038
reg. \$44.99
\$34.99

❖ **Crochet-Trim Top**
Marigold gauze top with crochet trim at neckline and short flutter sleeves. Body: rayon/polyester. Crochet trim: 100% polyester. Center back length: 24½" on M; 26½" on 1X. Machine wash, line dry. Imported.
XS(0-2) 617-403
S(4-6) 617-532
M(8-10) 617-805
L(12-14) 617-915
XL(16) 618-505
1X(18W-20W) 618-581
2X(22W-24W) 618-600
3X(26W-28W) 619-114
reg. \$39.99
\$29.99



Captivating Color

The Allure Of
Moroccan Nights



NEW

amber floral

**Far Away Moroccan Nights
Eau de Parfum**

Spicy floral notes dance in
a Moroccan dream. 1.7 fl. oz.
612-655 reg. \$25

\$19.99

Top: Violet Leaf, Powdery
Orris, Heliotrope
Mid: Blooming Moroccan
Mimosa, White Tonka,
Cardamom, Orange Flower
Dry: Creamy Cashmere
Woods, Musk, Sandalwood

LIPLINERS

 Honey Peach 327-721	 Lava Red 327-740	 Passion Red 327-650	 Red Brick 330-451	 Chocolate 330-667	 Simply Spice 330-614
 Mystery Mauve 330-538	 Candy Apple 327-903	 Pink Bouquet 330-356	 Merlot 330-284	 Perfect Plum 330-887	 Au Naturel 330-318

EYELINERS

 CREAM Emerald Green 334-332	 CREAM Starry Night 334-347	 CREAM Saturn Grey 334-328	 CREAM Majestic Plum 334-313	 CREAM Cosmic Brown 334-351	 CREAM Blackest Black 334-366
 DIAMOND Sterling 331-960	 DIAMOND Teal Sparkle 331-606	 DIAMOND Olive 331-940	 DIAMOND Twilight Sparkle 331-553	 DIAMOND Sugar Plum 331-625	 DIAMOND Purple Rain 332-071
 DIAMOND Smoky Diamond 331-280	 DIAMOND Brown Sugar 331-568	 DIAMOND Black Ice 331-610	 WATERPROOF Blue Skies 334-237	 WATERPROOF Brown Chocolate 332-124	 WATERPROOF Raisin 332-200
 WATERPROOF Seafoam Green 334-241	 WATERPROOF Smoky Grey 332-162	 WATERPROOF Blackest Night 229-491	 WATERPROOF Midnight Blue 332-158		

BROW DEFINERS

 Light Blonde 331-109	 Blonde 331-113	 Tawny 331-128	 Light Brown 331-151	 Dark Brown 331-147	 Brunette 331-242
--	--	---	---	--	--

fmg Glimmer Liners for Eyes, Brows and Lips
Long-wearing. Retractable. Formulated without parabens, sulfates and talc. Each, .01 oz. net wt. reg. \$9

NOW \$2.99 each

Available in Lipliner, Brow Definer and Cream, Diamond and Waterproof Eyeliner. Excludes Always On Point and Liquid Eyeliners.



© 2025 The Avon Company. All rights reserved.

CAMPAIGN 9, 2025
THE AVON COMPANY
165 BROADWAY, NY, NY 10006

avon.com

8 88761 72995 4
Pk of 10 4763801

8 88761 72997 8
Single 4763821

Brochure effective until _____



RETURN POLICY If you are not satisfied, return any item within 45 days. View Avon's full 45-Day Return Policy at avon.com/shipping-returns.