

AVON

CAMPAIGN 14

**+ FREE
GIFT**
SEE DETAILS
INSIDE

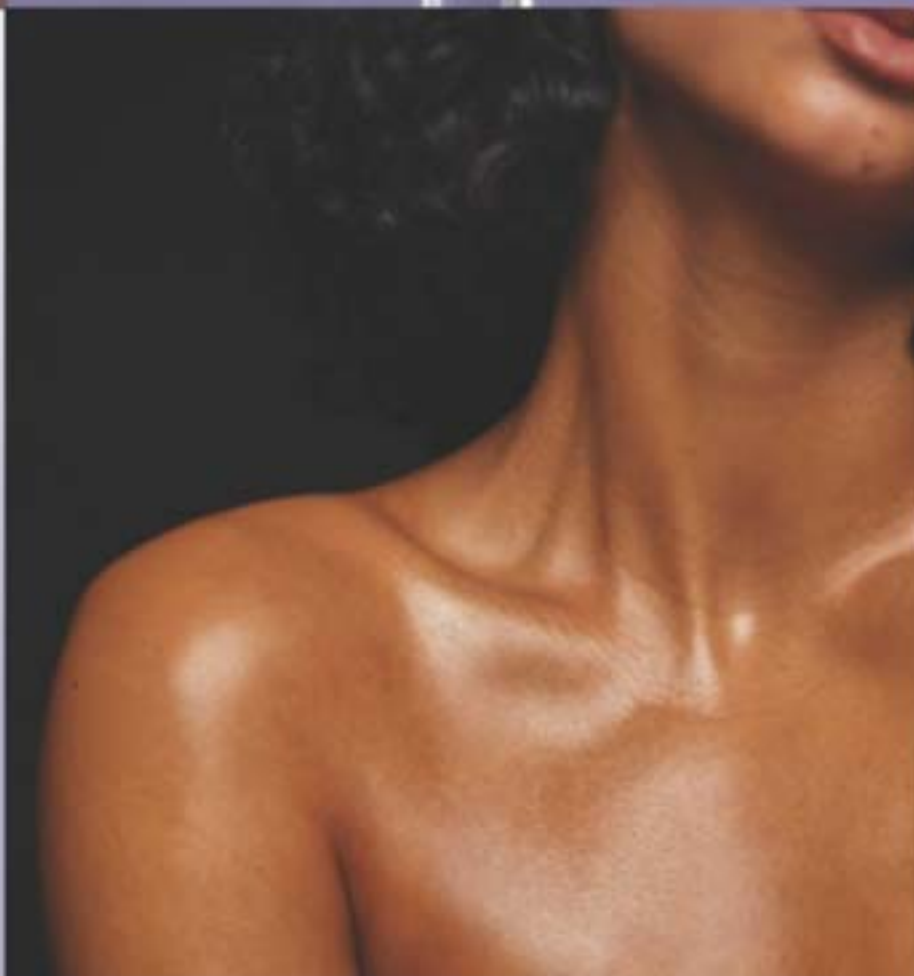
**ADVANCED
BODY CARE**
*for legendary
softness*





NEW Skin So Soft +

An advanced bath and body collection of luxurious oils infused with skin-loving ingredients for powerful results.



NEW Skin So Soft + RADIANT RENEW with Retinol

Retinol formulas enhanced with skin-loving ingredients help leave your skin looking and feeling softer, smoother and rejuvenated.

RETINOL

Known to help even the look of tone, brighten the look of complexion, reduce the appearance of wrinkles and improve the look of texture.

BISABOLOL

Known to help skin appear firmer.



Bath & Body Oil

Up to 48 hours of hydration. With squalane to help boost moisture. Skin looks soft and smooth with a radiant glow. Apply during or after your bath or shower. Lightly fragranced. 350 ml **051-955** reg. \$55

\$43.49

Formulated without mineral oils, sulfates and parabens.

+ FREE BRUSH details page 6

REFRESH. REVITALIZE. *reveal your radiance.*

With rejuvenating retinol to help brighten and even the look of skin tone, plus bisabolol, known to help skin appear firmer.

**NEW Skin So Soft +
RADIANT RENEW with Retinol**



Shower Gel

Infused with argan oil, known to be an abundant source of fatty acids, antioxidants and vitamin E. Skin looks softer, smoother and more radiant. Lightly fragranced. 236 ml **051-458** reg. \$33

\$25.99

Body Lotion

Up to 48 hours of moisturization. With hydrating hyaluronic acid to help skin appear more supple and radiant. Lightly fragranced. 350 ml **051-974** reg. \$37

\$29.99

**both for
\$42**

\$70 value
867-334

+FREE BRUSH
details page 6

Formulated without mineral oils, sulfates and parabens.

THE BEAUTY OF *Jojoba Oil*

This plant extract mimics skin's natural oils with vitamins and minerals essential to keeping skin feeling soft and smooth.

Gelled Body Oil Dries to a silky finish. 200 ml 939-500 reg. \$23 \$17.99	Bath Oil Spray Locks in hydration. 150 ml 847-583 reg. \$26.99 \$19.99	Bonus-Size Bath Oil 739 ml 663-480 reg. \$49 \$37.99
--	---	--



SKIN SO SOFT ORIGINAL

Body Lotion
350 ml 761-634
reg. \$24
\$17.99

Bonus-Size Body Lotion
1 litre 825-351
reg. \$37
\$25.49

Bonus-Size Shower Gel
1 litre 433-444
reg. \$27
\$20.99

Shower Gel
150 ml 914-580
reg. \$13
\$8.49

Bath Oil
Our bestselling bath oil. With jojoba oil. Fresh herbal scent.
500 ml 439-040
reg. \$35
\$27.99



Replenishing Hand Cream
100 ml 776-633 reg. \$11
\$8.49

Beauty Bar Soap
90 g 543-110 reg. \$7
NOW \$3.99



FREE
SHOWER BRUSH
WITH ANY
\$42 SKIN SO SOFT
PURCHASE,
PAGES 3-15.
\$16 VALUE.
Limited quantities.
Sold separately on page 34.



THE BEAUTY OF *Argan Oil*

So precious, it's called "liquid gold."
Packed with vitamin E, it helps to restore
skin's lustre and keep it feeling irresistibly soft.



Gelled Body Oil
Dries to a silky finish.
200 ml 908-244
reg. \$23
\$17.99

Bonus-Size Bath Oil
Hydrates during, or
after, bath or shower.
739 ml 862-920
reg. \$49
\$37.99



SKIN SO SOFT SOFT & SENSUAL

Bath Oil
With argan oil. Spicy floral scent.
500 ml 504-614 reg. \$35
\$27.99

Shower Gel
Gently cleanses and hydrates.
150 ml 914-710 reg. \$13
\$8.49

Bonus-Size Shower Gel
Gently cleanses and hydrates.
1 litre 018-142 reg. \$27
\$20.99

Body Lotion
Up to 48 hours of moisturization.
350 ml 400-720 reg. \$24
\$17.99

Replenishing Hand Cream
Up to 24 hours of moisturization.
100 ml 779-924 reg. \$11
\$8.49

Bonus-Size Body Lotion
Up to 48 hours of moisturization.
1 litre 825-643 reg. \$37
\$25.49

Beauty Bar Soap
Suitable for daily use.
90 g 543-215 reg. \$7
NOW \$3.99



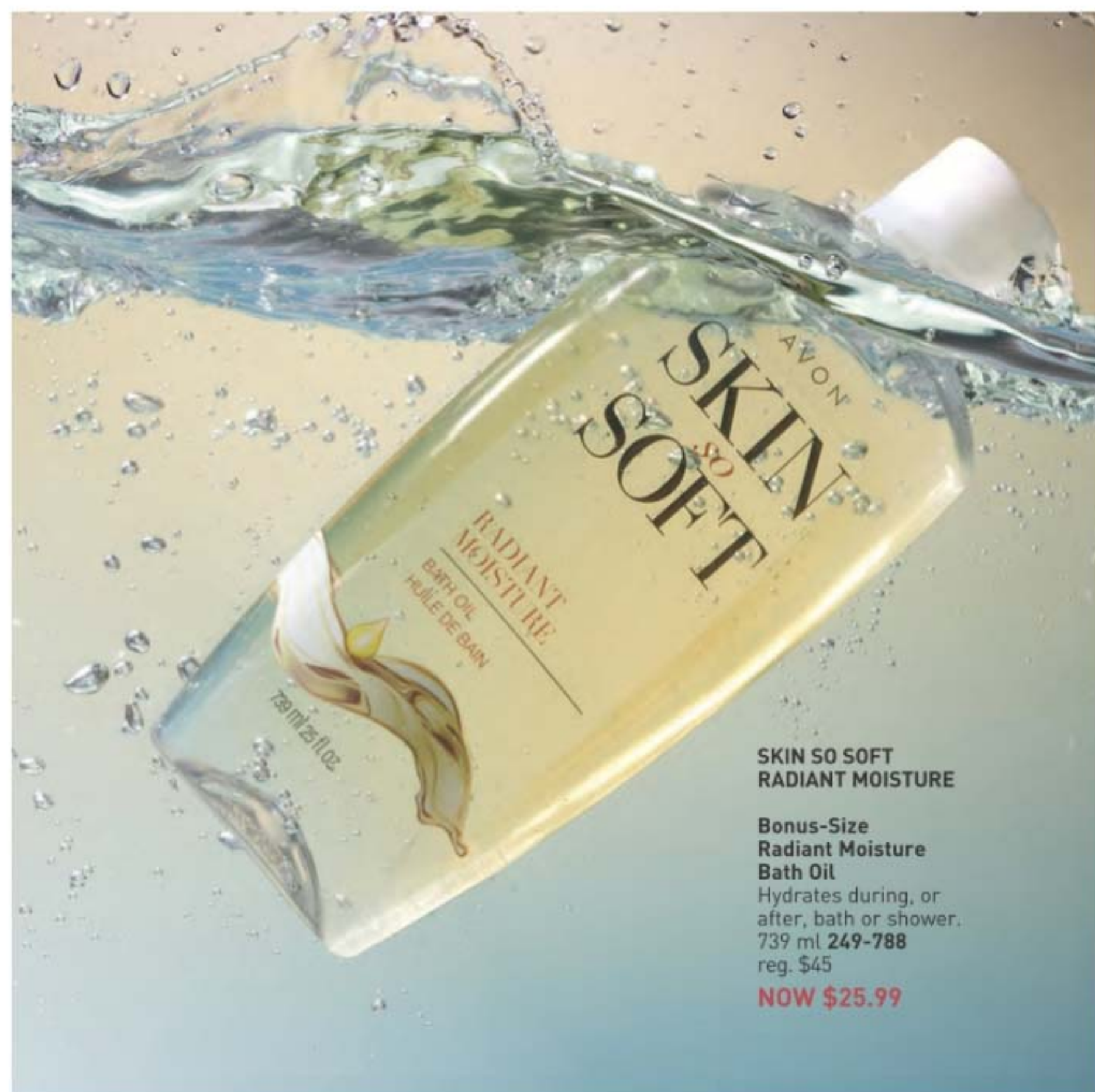
**Bonus-Size
Shower Gel**
Gently cleanses
and hydrates.
1 litre **433-922**
reg. \$25
NOW \$15.49



**Bonus-Size
Body Lotion**
Up to 48 hours
of hydration.
1 litre **620-956**
reg. \$37
NOW \$18.99



**Skin So Soft
Botanical Essence Bath Oil**
With nourishing botanical
extracts. Uplifting herbal
scent. 480 ml
027-253
reg. \$45
NOW \$25.99



**SKIN SO SOFT
RADIANT MOISTURE**

**Bonus-Size
Radiant Moisture
Bath Oil**
Hydrates during, or
after, bath or shower.
739 ml **249-788**
reg. \$45
NOW \$25.99

**Replenishing
Hand Cream**
Up to 24 hours
of hydration.
100 ml **776-561**
reg. \$11
NOW \$5.99



**Skin So Soft
Comforting Shea
Bath Oil**
With shea butter and oil.
Vanilla, sandalwood and
musk scent. 500 ml
015-071
reg. \$34
NOW \$18.99



Shower Gel
Gently cleanses
and hydrates.
150 ml **410-914**
reg. \$13
NOW \$5.99



**Skin So Soft
Supreme Nourishment
Enriching Coconut Oil
Milk Lotion**
Leaves skin feeling
silky soft. 350 ml
419-835
reg. \$24
NOW \$13.49



SKIN SO SOFT PURE NATURE REVITALIZING BODY COLLECTION
Sustainable packaging*
Eucalyptus mint scent

Body Cream
94% naturally derived.
Smooth on moisturizing cream after bath or shower.
355 ml **629-767**
reg. \$31
\$23.99

Shower Gel
96% naturally derived.
Richly lathering gel.
355 ml **415-170**
reg. \$31
\$23.99

In-Shower Body Lotion
95% naturally derived.
Hydrating and softening lotion. Apply on wet skin after shower or bath.
236 ml **633-857**
reg. \$31
\$23.99



SKIN SO SOFT PURE NATURE HAIR COLLECTION
Sustainable packaging*
Eucalyptus mint scent

Shampoo
With panthenol known to help moisturize, and citric acid, known to help hair look healthier. 355 ml **290-074**
reg. \$32
\$24.99

Conditioner
With panthenol known to help moisturize and improve the look of elasticity. Leaves locks looking smooth, healthy and shiny. 355 ml **290-089**
reg. \$32
\$24.99

Intense Hair Mask
With panthenol known to help moisturize and improve the look of elasticity for smoother, softer, stronger looking hair. 236 ml **290-131**
reg. \$32
\$24.99

*Shampoo, Conditioner, Shower Gel and Body Cream bottles: 95% post-consumer recycled material, excluding cap. Hair Mask and Body Lotion tubes: 55% post-consumer recycled material, excluding cap.



ooh la lavender



SKIN SO SOFT CALMING LAVENDER

Infused with a superior blend of **lavender** and **chamomile** essential oils, plus **jasmine**, for skin that feels softer and smoother with a healthy looking glow. **Tranquil lavender scent.**

Body & Bath Oil
With a luxe blend of lavender and chamomile essential oils, plus jasmine extract, this antioxidant-infused bath oil leaves skin feeling soft and supple. 350 ml **511-354**
reg. \$45
\$34.99

Sugar Scrub
Exfoliating scrub enhanced with jasmine extract and a relaxing blend of essential oils and allantoin. Skin looks and feels moisturized and smoother. 255 g **512-418**
reg. \$28
\$21.99

Body Lotion
With sunflower and rosehip seed oils to help skin feel softer and smoother, shea butter to lock in moisture; plus hyaluronic acid and aloe. Contains jasmine essential oil and resveratrol to help keep skin looking supple and youthful. 350 ml **511-995**
reg. \$31
\$23.99

**Skin So Soft
Fresh & Smooth
Facial Hair
Removal Cream**
Easily removes
unwanted facial
hair. 30 ml
562-543
reg. \$19
\$13.99



**Skin So Soft
Fresh & Smooth
Body Hair
Removal Cream**
Easily removes
unwanted body
hair. 125 ml
562-467
reg. \$14.50
\$11.49



**Foaming
Cleanser**
150 ml 041-647
reg. \$24
NOW \$13.99



**Soothing
Gel**
180 ml 040-636
reg. \$29
NOW \$16.99



**Exfoliating
Body Wash**
300 ml 041-556
reg. \$28
NOW \$16.99



facial bar soaps

With Skin So Soft signature oils
and other skin pampering ingredients.

**Best of
K-Beauty**



**Skin So Soft Facial Bar
Hyaluronic Acid*
& Niacinamide†**
Enriches skin with
moisture. 90 g
364-573
reg. \$9
\$6.99

**Skin So Soft Facial Bar
Salicylic* & Lactic** Acids**
Gently exfoliates to help
skin look softer and
luxuriously smooth. 90 g
364-569
reg. \$9
\$6.99

**Skin So Soft Facial Bar
Retinol†† & Vitamin C†**
Helps even the look
of tone, brighten
and enhance the
appearance of skin
clarity. 90 g
364-607
reg. \$9
\$6.99

**Skin So Soft Facial Bar
Collagen†† & Goat Milk*****
Deeply hydrates. 90 g
364-626
reg. \$9
\$6.99

*0.001%, **0.0009%, †0.0001%, ††0.00001%, ***0.007%

Skin So Soft for ACNE-PRONE SKIN

Developed for all skin types with
gently exfoliating salicylic acid.
Suitable for daily use. Formulated
without synthetic fragrances.

Bonus-Size Moisture Therapy Body Lotion1 litre
reg. \$35**\$27.99 each****Daily Skin Defense**Helps restore moisture to everyday dry skin. **725-793****Calming Relief**Relieves dry, itchy skin. Fragrance free. **639-802****Intensive Healing & Repair**Up to 72 hours of moisture for extra-dry skin. Fragrance-free. **639-745****Moisture Therapy Intensive Healing & Repair Extra Strength Cream**Up to 24 hours of moisturization. Fragrance-free. 150 g **224-982**
reg. \$13**\$9.99****Moisture Therapy Intensive Healing & Repair Hand Cream**For extremely dry skin. Fragrance-free. 125 ml **845-982**
reg. \$12**NOW \$5.99****Moisture Therapy Balance + Soothe Body Wash**Softens while it gently cleanses. 390 ml **438-078**
reg. \$33**NOW \$19.49****Moisture Therapy Balance + Soothe Body Lotion**Replenishes moisture to leave skin softer and healthier looking. 390 ml **438-082**
reg. \$35**NOW \$21**

rescue extra-dry skin

Moisture Therapy Intensive Healing & Repair All Over Rescue Balm StickUp to 24 hours of moisturization in a convenient, mess-free, glide-on stick. Fragrance-free. Apply anywhere on body, face and even lips. 18 g **470-004**
reg. \$25**\$19.99****Moisture Therapy Intensive Healing & Repair All Over Rescue Balm**Up to 24 hours of moisturization for extra-dry skin. With avocado oil and shea butter. Apply anywhere on body, face and even lips to seal in moisture and keep skin looking healthy. Fragrance-free. 75 ml **419-840**
reg. \$21**\$16.99**

Senses Aquatic Breeze

Inhale the fresh and cool, invigorating ocean breeze with an energizing blend of mandarin zest, bergamot peel, lotus flower and driftwood.

Bubble Bath

700 ml

746-388

reg. \$23

\$18.49

Body Scrub

With apricot seed powder.

240 g

746-426

reg. \$34

\$26.49

**Senses Sun-Kissed Coconut**

Escape to the tropics with a creamy, sun-soaked splash of coconut water, a whiff of warm vanilla, a dash of dreamy jasmine, ylang-ylang and a sprinkle of sea salt.

Bubble Bath

700 ml

746-369

reg. \$23

\$18.49

Body Scrub

With apricot seed powder.

240 g

746-407

reg. \$34

\$26.49

**Senses Caramel Sol**

Indulge in a day at the beach under the Mediterranean sun with rich and decadent notes of velvety caramel infused with warm golden rays of vanilla, a sweet sip of almond and coconut milk, and a zesty mandarin twist.

Bubble Bath

700 ml

746-373

reg. \$23

\$18.49

Body Scrub

With apricot seed powder.

240 g

746-411

reg. \$34

\$26.49

**Senses Strawberry Sunset**

Sail away to a Caribbean summer night with the sweet and refreshing blend of luscious strawberries kissed by the warmth of the setting sun, a hint of pink magnolia and crushed mint.

Bubble Bath

700 ml

746-354

reg. \$23

\$18.49

Body Scrub

With apricot seed powder.

240 g

746-392

reg. \$34

\$26.49

invigorate the senses

Cleanse all over with your favourite refreshing scents.

Senses Shower Gel
Blushing Cherry Blossom
150 ml
921-847
reg. \$12
\$8.49

Senses Shower Gel
Juicy Pomegranate & Mango
150 ml
248-155
reg. \$12
\$8.49

Senses Shower Gel
Fresh Cucumber & Melon
150 ml 400-716
reg. \$12
\$8.49

Senses Shower Gel
Silky Vanilla
150 ml 248-140
reg. \$12
\$8.49

Senses Lip Balm
4.1 g
Strawberry 554-219
Cherry 554-223
reg. \$5
\$3.49 each



soak away stress

Senses Bubble Bath
700 ml
reg. \$23
\$18.49 each



Cherry Blossom
929-211



Vanilla Cream
875-669



Cucumber Melon
688-950



Sensitive Skin
875-400



Orange & Honeysuckle
633-952



Endless Ocean
809-075



Lily & Honeysuckle Blossom
805-524



Lavender Garden
381-799

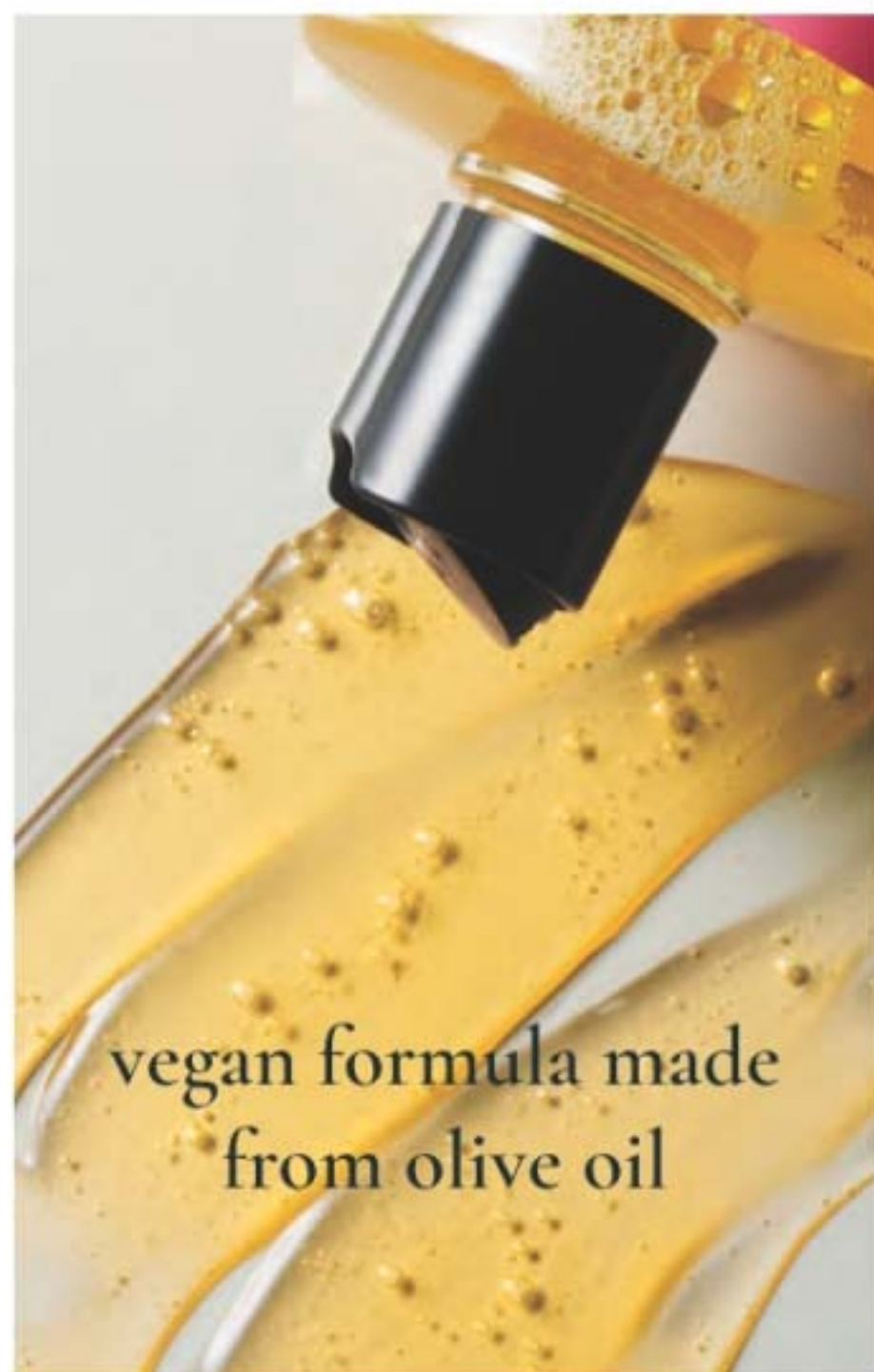


Organist

everyday beauty
inspired by nature

Botanical Castile Soap

Daily vegan washes for face and body infused with soap made from olive oil, and formulated without parabens, silicone oil or sulfates. Leaves skin feeling refreshed, revitalized and luxuriously moisturized while it cleanses.



vegan formula made
from olive oil



revitalize

FOR OILY SKIN

Tea Tree & AHA BHA
Helps target excess oil as it deeply cleanses and refreshes. Fresh herbal scent. 480 ml
348-115
reg. \$27
\$20.99

moisturize

FOR DRY SKIN

Rose Water & Hyaluronic Acid
Low-pH formula helps replenish moisture. Crisp floral scent. 480 ml
348-100
reg. \$27
\$20.99

NEW

relax

FOR NORMAL SKIN

Lavender Oil & Vitamin E
Helps skin feel refreshed while promoting a relaxing experience. Lavender scent. 480 ml
048-398
reg. \$27
\$20.99



Best of
K-Beauty

Organist Rice Water | *hydrating*

- a time-honoured Asian beauty secret
- rich in amino acids, vitamins B and E, and minerals
- helps reduce breakage and split ends to smooth hair and improve shine and manageability



add moisture to dry, damaged hair for a healthy-looking shine

CLEANSE

Damage Care Shampoo

With biotin, ceramide, protein and 17 amino acids to revitalize dry strands, helping to restore strength and resilience. Enriching rice water helps transform dry hair into a silky mane. 500 ml **381-803** reg. \$27

\$20.99

HYDRATE

Damage Care Treatment

Perfect for hair in need of hydration. Biotin, protein and 17 amino acids help revitalize dry strands from within. Hyaluronic acid and collagen help smooth hair for resilience and softness. 200 ml **381-860** reg. \$27

\$20.99



jasmine
and
freesia
scent

Nourishing
Oil Layer

Hydrating
Essence Layer



BEFORE



AFTER

hydrate hair with an uplifting fragrance mist

Moisture Replenish Hair Mist

2-layer mist. A hydrating essence layer plus 5-plant oil layer, including jojoba and argan oils, for deep moisturization. Rice water, biotin, ceramide, protein and amino acids help revitalize, nourish and soften dry, damaged hair. Shake well before use. Use on damp or dry hair. Fresh floral scent. 80 ml

381-985
reg. \$34

\$26.99

Images show results using Organist Rice Water Moisture Replenish Hair Mist as directed. Mist was applied multiple times on dry hair. Minimal styling for consistency. Results may vary.

FOR BODY

with antioxidants ideal for helping to moisturize dry skin

CLEANSE

Nourishing Body Wash

With soap derived from olive oil. Contains panthenol and hyaluronic acid. Helps skin appear soft and moisturized. 500 ml

382-097
reg. \$27

\$20.99

HYDRATE

Nourishing Body Milk

With plant-derived moisturizer and plant derived oil (squalane) to help hydrate and nourish dry skin. Easily absorbed. Nongreasy. 300 ml

382-336
reg. \$27

\$20.99



Organist Rosemary + Mint | *revitalizing*

- helps hydrate the scalp
- with the natural goodness of rosemary

healthy-looking hair starts at the scalp

CLEANSE

With rosemary and biotin, to help keep your scalp and hair looking healthy. Refreshing, cooling peppermint helps your scalp feel revitalized.

500 ml

Shampoo

542-974

Conditioner

542-993

reg. \$27

\$20.99 each

REVITALIZE

Scalp

Strengthening Tonic

With rosemary, mint, biotin and caffeine. Scalp feels revitalized with a cooling sensation. Hair looks fuller, thicker and stronger. 150 ml

544-427

reg. \$34

\$26.99



rejuvenate hair from the roots

Hair Strengthening Oil

2-in-1 daily-use oil for hair and scalp. With essential oils, 99% derived from plants, plus biotin. Rosemary and mint blend. Hair feels fortified and refreshed. 60 ml

542-845
reg. \$34
\$26.99

FOR HAIR & BODY

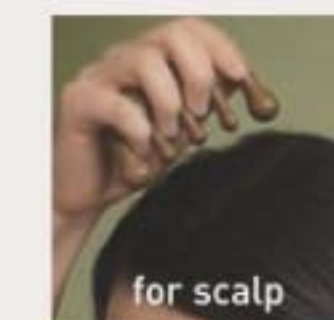
Gua Sha Scalp Massager

For scalp, neck and body. Helps promote circulation for hair that looks stronger and healthier. Wood.

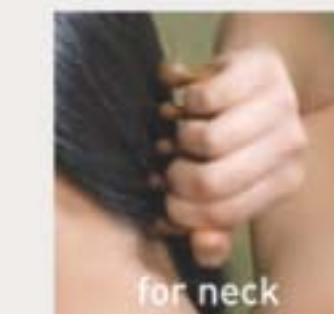
542-960

reg. \$34

\$26.99



for scalp



for neck

support your body's
moisture barrier

Body Wash

Invigorate your senses. Formulated with AHA/BHA/PHA and panthenol. 500 ml

544-446

reg. \$27

\$20.99



Scalp Tonic

Leave-on scalp tonic made with a blend of 10 natural herbs. Revitalizes the scalp. 150 ml
482-721
 reg. \$34
\$26.99

**Clarifying Water Treatment**

Infused with collagen and hyaluronic acid. Formulated to clarify and help locks look naturally soft and flowing instantly with a healthy looking shine. 180 ml **482-717**
 reg. \$27
\$20.99



Organist Apple Cider Vinegar | *clarifying*

Crafted from a curated selection of ingredients, including apple cider vinegar extract, ginger, menthol and biotin. Formulated without silicone oil or sulfates.

APPLE CIDER VINEGAR FOR BODY**Body Wash**

Blends apple cider vinegar extract with panthenol so skin feels refreshed and nourished. 500 ml
482-740
 reg. \$27
\$20.99

Exfoliating Body Scrub

With panthenol and AHA/BHA/PHA, gently exfoliates dead skin cells to help skin look and feel refreshed all over. 200 ml **482-846**
 reg. \$27
\$20.99

**APPLE CIDER VINEGAR FOR HAIR****Clarifying Shampoo**

Helps clarify and nourish scalp and hair for a healthy-looking shine while it cleanses. 500 ml
482-650
 reg. \$27
\$20.99

Clarifying Conditioner

Helps clarify and nourish scalp and hair for a healthy-looking shine. 500 ml
482-664
 reg. \$27
\$20.99





AN ORAL CARE
INNOVATION:

HIMALAYA PINK SALT

For a healthy, whiter,
brighter looking smile.
Enriched with Himalayan
Pink Salt.

Himalaya Pink Salt Purple Whitening Toothbrush

Purple colour fades
as bristles wear,
reminding you to
replace. Clinically
tested to remove 4X
more interdental
plaque.* Bristles
with 2X the elasticity
clean narrow gaps
between teeth and
the gum line.

383-165
reg. \$9

\$6.99

*Compared to LG H&H regular
toothbrush with soft bristles.



Himalaya Pink Salt Whitening Toothbrush (Medium)

Bristles are infused
with Himalayan pink
salt for effective
cleansing and a gentle
brightening effect.
Medium size brush.
High tension bristles
penetrate narrow gaps.

729-359
reg. \$9

\$6.99



Himalaya Pink Salt Intensive Whitening Toothbrush (Large)

Bristles are infused
with Himalayan pink
salt for effective
cleansing and a gentle
brightening
effect. Large size
brush. High tension
bristles penetrate
narrow gaps.

035-812
reg. \$9

\$6.99



**Véilment Natural Spa
Glacial Water Cooling
Body Scrub & Cleanser**
400 ml 573-480
reg. \$25
NOW \$14.49



**Véilment Natural Spa
Dead Sea Salt
Body Scrub & Cleanser**
400 ml 781-992
reg. \$25
NOW \$14.49



**Foot Works
Intensive Moisture
Foot Cream**
Suitable for diabetics.
75 ml 069-016
reg. \$17
\$13.99



**Foot Works
Intensive
Callus Cream**
Softens hard calluses.
90 g 851-310
reg. \$17
\$13.99



**Véilment Natural Spa
Black Rose
Body Scrub & Cleanser**
400 ml 707-969
reg. \$25
NOW \$14.49



**Véilment Natural Spa
Himalaya Pink Salt
Exfoliating Soap**
150 g 260-440
reg. \$12
NOW \$5.99



**Foot Works
Deodorizing Spray**
Can also be used in
footwear. 100 g
313-236
reg. \$21
\$16.99



SOLE MATES
step up your routine to help restore
healthy looking feet with Foot Works



Avon Shower Brush

Long handle to reach
down back. Brush helps
cleanse. Back of brush
features massage
nubs. Non-slip, comfort
handle has a convenient
hanging loop.

904-727
reg. \$16
\$11.99

Exfoliation Mitt

Microfibre jacquard with
nylon/spandex cuff. 439-734
reg. \$20

\$15.99



4 in 1:
• Fine grain file
• Metal file
• Pumice
• Brush

**Foot Works
Pedicure Tool**
592-712
reg. \$17
\$13.99



Kit includes:
• Nail clipper
• Toenail clipper
• Scissors
• Small nail file
• Cuticle pusher

Foot Works Pedicure Kit
Case, 9 cm L x 12 cm W.
121-029
reg. \$21
\$16.99 the kit





Rare Pearls
015-526



Night Magic
Evening Musk
158-594



Sweet Honesty
792-211



Timeless
913-971



Feelin' Fresh
Original
314-661



Skin So Soft
Soft & Sensual
027-511



Far Away
832-842



Haiku
438-030



Imari
896-784



Rare Gold
158-518



Cool Confidence
Original
158-431



Cool Confidence
Baby Powder
367-610



On Duty Sport
088-014



On Duty
Unscented
886-920



On Duty
Original
368-880



Black Suede
894-045



Mesmerize
893-986



Wild Country
048-842

**Roll-On
Anti-Perspirant
Deodorant**
75 ml
reg. \$7
\$5.49 each



Imari Essence
703-600



Far Away Essence
946-714



Skin So Soft
Soft & Sensual Essence
703-614



Feelin' Fresh Essence
703-576



On Duty Essence
083-668



On Duty Sport Essence
083-835

**Roll-On
Anti-Perspirant
Deodorant**
50 ml
reg. \$5.50
\$3.99 each



**Perfumed Liquid
Deodorant**
Soft floral scent.
Aluminum-free.
Fast-drying.
Easy fingertip
application.
59 ml **889-915**
reg. \$14
\$10.99



**Avon Microbiome
by Reach® Hygiene
Deodorant Stick**
Floral citrus scent.
Aluminum-free.
24-hour odour
protection. 75 g
524-528
reg. \$22
\$17.99

make the great outdoors yours



SKIN SO SOFT BUG GUARD PLUS ICARIDIN

- HELPS REPEL MOSQUITOES FOR UP TO 5 HOURS
- HELPS REPEL DEER TICKS FOR UP TO 7 HOURS
- SAFE FOR THE ENTIRE FAMILY
- NON-GREASY
- QUICK DRYING



FAMILY SIZE

Insect Repellent
Spray II
236 ml
876-100
reg. \$35.25
\$25.99

INDIVIDUAL SIZE

Insect Repellent
Spray II
118 ml
510-032
reg. \$25.99
\$17.99



EASY TRAVEL TOWELETTES

Insect Repellent
Towelettes
23 cm L x 14 cm W.
10.9 g
482-239
reg. \$22
\$17.99 pack of 8





SALON-INSPIRED FORMULAS

Root Touch-Up
Instantly covers up roots and bare spots. With black bean and ginseng. Built-in mirror. 7 g
reg. \$28
\$22.99 each



 Reddish Brown
243-627
  Light Brown
244-642
  Dark Brown
245-213
  Black
245-251

**Advance Techniques
Daily Shine
2-in-1 Shampoo
& Conditioner**
Leaves hair feeling clean, conditioned and frizz-free. 350 ml
553-413
reg. \$27
\$20.99



**Elastine PropoliThera
Hair Deep Conditioning
Treatment Cap**
Single-use cap.
053-761
reg. \$13
NOW \$7.49



**Elastine PropoliThera
Serum
Treatment**
230 ml
359-821
reg. \$31
NOW \$19.49



**Elastine PropoliThera
Damage Repair
Shampoo**
500 ml
053-082
reg. \$27
NOW \$16.99



**Elastine PropoliThera
Damage Repair
Conditioner**
500 ml
638-681
reg. \$27
NOW \$16.99



**Elastine PropoliThera
Volumizing
Shampoo**
500 ml
892-607
reg. \$27
NOW \$16.99



**Elastine PropoliThera
Volumizing
Conditioner**
500 ml
892-870
reg. \$27
NOW \$16.99



**Best of
K-Beauty**

**Elastine PropoliThera
Hair Mask**
300 ml
150-301
reg. \$27
NOW \$16.99



**Elastine PropoliThera
Hair Oil Serum**
170 ml
895-190
reg. \$31
NOW \$17.49



CHI's unique blend includes aloe vera, pomegranate, hibiscus and other ingredients for healthy looking hair.

**CHI® Essentials
Moisturizing Conditioner**
355 ml 589-409
reg. \$32

NOW \$18.49

**CHI® Essentials
Replenishing Shampoo**
355 ml 589-140
reg. \$32

NOW \$18.49



**Avon
Blow-Dry
Round Hairbrush**
504-800
reg. \$28
\$22.99



**Avon
Detangling
Hairbrush**
504-815
reg. \$20
\$15.99



**Elastine
Salon de Color
Color Vibe
Purple Shampoo**
250 ml 436-109
reg. \$27
NOW \$15.49



**Avon
Detangling Comb**
504-820
reg. \$13
\$8.99



**Elastine
Salon de Color
Color Vibe
Purple Conditioner**
250 ml 436-955
reg. \$27
NOW \$15.49



**CHI® Essentials
Revive Keratin +
Bonding
Restoring
Shampoo**
355 ml 451-192
reg. \$35
NOW \$20.99



**CHI® Essentials
Revive Keratin +
Bonding
Restoring
Conditioner**
355 ml 451-211
reg. \$35
NOW \$20.99



**Avon
Compact
Hairbrush**
504-743
reg. \$16
\$11.99



**Elastine HempharmX
Weightless Hydration
Conditioner**
400 ml 360-544
reg. \$34
NOW \$21



Best of
K-Beauty

GREAT HAIR STARTS WITH SCALP CARE

Dr. Groot Premium Scalp Cleansing Brush
Helps promote cleansing of residue while
massaging to reinvigorate scalp as it helps
to stimulate circulation. **065-776**
reg. \$28
\$21



**Dr. Groot Microbiome Scalp Fortifying
Serum Treatment**
Moisturizes and helps support
healthy looking hair. 200 ml
782-271
reg. \$49
\$41



**Dr. Groot Microbiome Scalp Fortifying
Hair-Thickening Shampoo**
With coconut oil, cleanses as it helps
moisturize dry scalp and hair. 400 ml
778-014
reg. \$49
\$41

SKIN CARE

Healthy-looking, hydrated skin starts here. Address your skin care concerns with our high-performance formulas.



Cleansers with benefits

fruit infused formulas

Cleanse + Remove Makeup

For All Skin Types

With Kiwi Extract and Vitamins B3, B9 and Provitamin B5

Beyond Glow Gentle Foaming Cleanser with Vitamins + Kiwi

A gentle foaming water-based cleanser that easily washes off makeup and residue without stripping your skin, leaving it feeling soft and smooth. Skin looks brighter and revitalized. 150 ml **575-760** reg. \$27

\$20.99



For All Skin Types

With Mango Butter & Papaya Enzyme

Beyond Glow Melting Balm Cleanser with Enzyme + Mango Butter

Transforms into a silky oil when massaged onto skin. Add water for a creamy cleansing milk that rinses away makeup and residue, leaving your skin feeling soft, smooth and refreshed. 150 ml **575-865** reg. \$27

\$20.99

*Based on a consumer perception study of 33 people.



Cleanse + Hydrate

For Dry Skin With Hyaluronic Acid & Niacinamide

Beyond Glow Hyaluronic Acid + Niacinamide Facial Cleanser
150 ml **627-821**
reg. \$20

\$15.49



Cleanse + Brighten

For Normal Skin With Vitamin C & AHA

Beyond Glow Vitamin C + AHA Facial Cleanser
150 ml **628-450**
reg. \$20

NOW \$11.49



Cleanse + Exfoliate

For Oily Skin With Salicylic & Citric Acids

Beyond Glow Salicylic + Citric Acids Facial Cleanser
150 ml **627-798**
reg. \$20

NOW \$11.49

FREE Lipcerin Key Ring Holder details page 46

Hydrate

**Beyond Glow
Lipcerin Intensive
Nourishing
Lip Care**
reg. \$28
\$24.99



Nourishing
052-325

An intensive, glistening formula that hydrates. With peptide, moisture enhancing glycerin and shea butter. Clear finish. 15 ml

Plump

**Beyond Glow
Lipcerin
Plump and Cool
Lip Care**
reg. \$28
\$24.99



Plump and Cool
052-344

An intensely moisturizing, glistening formula that plumps and softens the look of lips. With cooling menthol to help increase the appearance of lip volume. Clear finish. 15 ml

Tint

**Beyond Glow
Lipcerin
Hydrating Tinted
Lip Care**
reg. \$28
\$24.99
each



	Twinkle 052-750		Flash 052-909
	Gleam 053-097		Flare 053-101
	Splendor 053-078		Smolder 053-140

An intensely moisturizing, glistening formula that softens the look of lips and adds a glossy hint of colour. With peptide, moisture enhancing glycerin and shea butter. 15 ml

free

With any \$65 Beyond Glow purchases from pages 45-55. Limited quantities.
\$8 value



**Beyond Glow Lipcerin
Key Ring Holder**
Not sold separately. Sleek, durable silicone key ring keeps your Lipcerin easily accessible, perfect for on-the-go touch ups!

Lipcerin not included with Key Ring Holder.



DAY SHIFT



NIGHT SHIFT

shifting shades magic results

Presto change-o! Formula interacts with your lips' pH and transforms to your personalized shade of pink.



Day Shift
Lemon/lime shade shifts to a **warm pink** on lips. **840-756**



Night Shift
Black shade shifts to a **cool pink** on lips **840-760**



And it's like skin care for your lips because it has:

ceramides

Known to help support skin's moisture barrier

peptides

Known to help support a youthful look

glycerin

Known to help enhance moisture

shea butter

Known to help soften and hydrate dry lips

superfruit extracts

With the benefits of blueberry, amla and açai

NEW

**Beyond Glow
Color Shift Tinted
Lip Care**
reg. \$28

\$24.99 each

An intensive, glistening formula that hydrates dry lips with peptide, moisturizing glycerin, shea butter and fruit extracts while adapting to your lips for a customized shade. 15 ml



BROAD SPECTRUM SUN PROTECTION

WITH

- HYALURONIC ACID
- CERAMIDES
- CENTELLA ASIATICA

PLUS

- BLENDS SEAMLESSLY
- PERFECT FOR ALL SKIN TONES
- FORMULATED WITHOUT FRAGRANCE

BEYOND GLOW DAY

Milk SPF 50
With higher SPF.
50 ml
150-278
reg. \$55

Moisturizer SPF 30
For face and body.
50 ml
149-737
reg. \$55

\$42.99 each

sun care that doubles as skin care

NEW BEYOND GLOW SUNSCREENS



SPF 50
rich milky
texture for
extra care



SPF 30
lightweight
texture for
everyday wear

Best of
K-Beauty

in one use

relieves the look of redness
caused by dryness[†]

Beyond Glow Centella Redness Relief Serum

A gel serum with centella asiatica,
panthenol and glycerin. 30 ml

350-399

reg. \$48

\$35.99



BEFORE*



AFTER

*Subject's face exposed to heat for 20 minutes to induce skin irritation.

†Based on a consumer perception study of 32 people.

**Based on a consumer perception study of 31 people.

††Based on a clinical study of 32 people.

BEYOND GLOW

CENTELLA COLLECTION

SKIN CARE



96%
said skin
feels
instantly
cooled**

**Beyond Glow Centella
Cooling Toner**
Refreshes and
moisturizes
in seconds.
200 ml
350-403
reg. \$35
\$27.99

in 6 days
skin barrier improved^{††}

**Beyond Glow Centella
Soothing Cream**
Moisturizes and reduces
the look of dryness.
80 ml 350-422
reg. \$48
\$35.99

FREE Lipcerin Key Ring Holder details page 46



Beyond Glow Niacinamide 2% Cream Mist

Deliver an instant boost of hydration to your skin with this creamy, fast absorbing spray-on serum that can be used under or over makeup for glowing skin anytime, anywhere. Infused with niacinamide. 100 ml

617-365

reg. \$48

\$36.99



Beyond Glow Niacinamide 10% Firming Cream

Hydrating neck and chest cream formulated with tried and true ingredients niacinamide, shea butter and squalane derived from olive oil, plus panthenol, which helps support the skin barrier. 100 ml

052-249

reg. \$53

\$41.99



Beyond Glow Niacinamide 10% Eye Cream

Moisturizing eye cream formulated with tried and true ingredients niacinamide and caffeine, plus panthenol, which helps support the skin barrier. 30 ml

052-272

reg. \$34

\$27.99



In just 4 weeks:

Beyond Glow Niacinamide 10% Firming Cream

- Crepey skin appears smoothed*
- Neck and décolleté lines look improved*

*Based on a clinical study on 31 people.

Beyond Glow Niacinamide 10% Eye Cream

- Crow's feet appear reduced†
- Helps under-eye bags look depuffed†

†Based on a clinical study on 30 people.

Minimize the look of PORES

serum + cream
together
3X
Reduction in the
look of pores**



Beyond Glow Niacinamide 10% + Panthenol Serum

Helps improve the look of tone and elasticity. Niacinamide, also known as vitamin B3, helps even the look of skin tone and supports the skin barrier. Panthenol, also known as provitamin B5, helps lock in moisture. 30 ml / 1 fl. oz. U.S.

\$42.99

Beyond Glow Niacinamide 10% All-in-One Cream

Facial cream that helps enhance your healthy-looking glow. All-in-one facial cream helps brighten the look of skin, reduces the appearance of fine lines and helps support the skin barrier. 110 ml / 3.7 fl. oz. U.S.

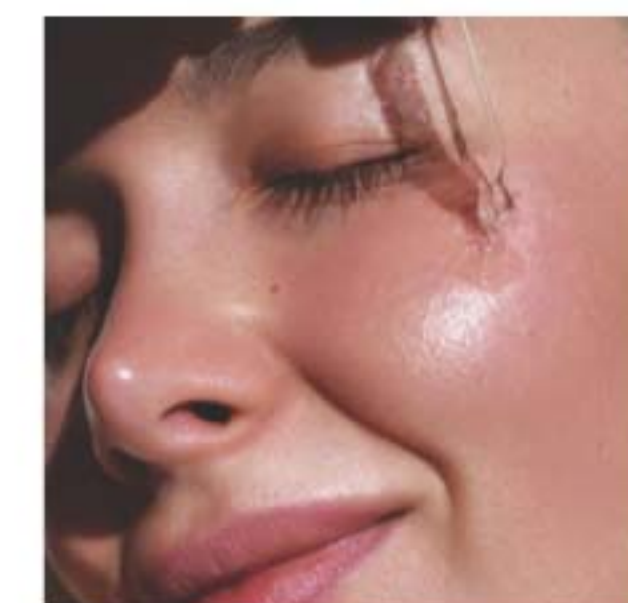
\$41.99

Serum + cream, when used together:
Reduce the look of pores by

44%^{††}

**Vs. using the serum alone, based on a clinical study. ††In a 4-week clinical trial of 32 people.

FREE Lipcerin Key Ring Holder details page 46





Beyond Glow
Hyaluronic Acid 1.5% + Ferulic Acid Serum

Hyaluronic acid, known as a "moisture magnet," helps infuse skin with instant and lasting hydration. Ferulic acid, a powerful antioxidant, helps support skin against environmental stressors. 30 ml **255-593** reg. \$55

NOW \$31.99



Beyond Glow
Vitamin C 6% + Ferulic Acid Serum

Vitamin C helps improve the appearance of radiance for a glowing look. Ferulic acid, a powerful antioxidant, helps support skin against environmental stressors. 30 ml **255-589** reg. \$55

\$42.99

Clinically tested to improve skin radiance in 3 days

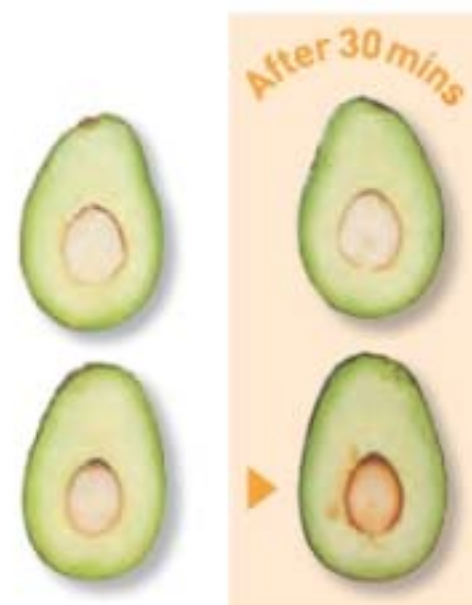
Q What makes Beyond Glow Vitamin C Serum so special?

A **125** HOUR 125-hour antioxidant effect*

4X 4X stronger skin barrier in 2 weeks†

Just look at the **antioxidant effect!**
of Beyond Glow Vitamin C 6% + Ferulic Acid Serum

With
Beyond
Glow
Serum



Without
Beyond
Glow
Serum



Boosts absorption of vitamin C by 2X**

Use with
Vitamin C
6% + Ferulic
Acid Serum
for optimal
results.

Beyond Glow
Galvanic Booster Device

Give your skin spa pampering at home in 3 minutes. Red LED light helps tone the appearance of skin texture, enhances your radiant glow and helps promote a healthy look. On-the-go compact design. Automatically turns on and off. Requires 2 cell batteries. **255-627** reg. \$85

\$69.99

*Evaluated by in vitro test. †Based on stripped skin instrumental study on 31 people. **Evaluated by Dongduk Women's University Industry-Academia Cooperation [ex vivo test, DPPH, Oct. 13 to 24, 2023].

The Trending Star Ingredient: SNAIL MUCIN Complex

Clinically tested to
improve skin tone
and brightness

**Beyond Glow Snail Mucin Complex
+ Panthenol Cream**

Moisturizes while improving the appearance of texture and elasticity. With snail mucin complex and panthenol, which helps lock in moisture. 110 ml

255-536

reg. \$48

\$36.99

**Beyond Glow Snail Mucin Complex
+ Niacinamide Serum**

Moisturizes, brightens and retexturizes the look of skin. With snail mucin complex and niacinamide, also known as vitamin B3, which helps even the look of skin tone and supports the skin barrier. 100 ml **255-574**

reg. \$48

\$36.99

Our cream and serum, formulated with snail mucin complex, moisturize and help brighten the appearance of skin with a clear, cushiony yet fast-absorbing texture that disappears into the skin while plumping its look with hydration.



Real Formulas, Real Results



"I'M GETTING SO MANY COMPLIMENTS ON MY BARE SKIN.
I ALMOST DON'T WANT TO EVEN WEAR MAKEUP!"

"BEYOND GLOW IS A GAME CHANGER.
I HAVE SEEN A SIGNIFICANT IMPROVEMENT IN MY SKIN."

The Ambassadors were gifted with the Beyond Glow Snail Mucin Cream, plus the 4 serums from the Beyond Glow regimen, which they used with the Galvanic Booster Device, AM and PM, for 2 weeks.



**Anew Ultimate Supreme
Radiant Firming Cream**

A lightweight moisturizer, perfect for daytime use. With panthenol, niacinamide and peptides to help boost hydration, and restore the look of brightness and firm skin contours. With bakuchiol, an alternative to retinol to reduce the appearance of wrinkles and discolourations without irritation. Clinically tested to improve the look of skin texture and elasticity. 50 ml

835-052
reg. \$85
\$57.99



Anew Ultimate Multi-Performance Eye System

Reduces the look of crow's feet and helps de-puff the appearance of under-eye bags.

Cream, 15 g; elixir, 2.5 g. 021-862
reg. \$59
\$41.99



Anew Ultimate Night Repair Serum

See improvement in the look of tone and texture.

With peptides, licorice, hyaluronic acid and niacinamide. Use PM before moisturizer. 30 ml

625-355 reg. \$63
\$42.99



Anew Ultimate Supreme Eye Balm

Moisturizing formula infused with squalane, sunflower seed oil and antioxidant vitamin E. Wear alone or under makeup. 2.9 g

625-340
reg. \$63
\$42.99



Anew Ultimate Multi-Performance Night Cream

It works while you sleep to revive and recreate the look of youthful skin. 50 g

763-311
reg. \$59
\$41.99



Anew Ultimate Supreme Dual Elixir

Black Pearl Extract combined with precious oils. See a dramatic difference in the appearance of even advanced signs of aging. Serum/oil, 20 ml each.

963-925 reg. \$84
\$57.99



**Anew Ultimate Supreme
Advanced Performance Crème**

With Black Pearl Extract. See a dramatic difference in the appearance of deep wrinkles and skin radiance. 50 g

014-735 reg. \$84
\$57.99



**Anew Ultimate Multi-Performance
Day Cream Broad Spectrum SPF 25**

See the look of wrinkles appear reduced and the look of youthful vibrance return. 50 g

659-769
reg. \$59
\$41.99

ANY TWO FOR \$66

mix or match any 2 for discount to apply,
pages 57-58

defying gravity
has never been easier



Anew Platinum Firm and Sculpt Cream for Neck and Chest

With Peptide Lifting Complex to target the skin on your neck and chest, which is more vulnerable to wrinkles and sagging. Use PM after cleansing. 50 g **763-584**
reg. \$59

\$41.99

Anew Platinum Night Cream

Skin appears smoother overnight and looks resculpted over time. 50 g **753-439**
reg. \$59

\$41.99

Anew Platinum Eye & Lip Cream

Smooths the appearance of the area around eyes and lips. Dual applicator. 15 g **902-614**
reg. \$59

\$41.99

Anew Platinum Day Cream Broad Spectrum SPF 25

Reduces the appearance of wrinkles for a more youthful complexion while sagging skin feels lifted. 50 g **659-439**
reg. \$59

\$41.99



Anew Platinum Age Delay Serum

With niacinamide, panthenol and peptide. Formulated to enhance the look of elasticity for a firmer appearance. Use AM and PM before moisturizer. 30 ml **625-609**
reg. \$63

\$42.99



Anew Platinum Sculpting Sleep Mask

An overnight mask that helps lift and plump the look of skin while providing hydration while you sleep. Formulated with skin-loving ingredients, including peptides, panthenol and niacinamide. Clinically tested to improve the look of skin texture and wrinkles in two weeks. 50 ml **835-033** reg. \$60

\$41.99



Anew Platinum Sculpting Body Serum

With moisture-boosting niacinamide, panthenol (pro-vitamin B5) and peptides. 200 ml **506-249**
reg. \$63

\$42.99



**Isa Knox LXNEW Ultimate
Rejuvenating Eye Serum**

Infused with paeonol and niacinamide to help reduce the look of fine lines around the eye area and de-puff the look of under-eye bags. 30 ml **567-177** reg. \$70

\$28 LOWEST PRICE EVER



**Isa Knox LXNEW Ultimate
Rejuvenating Multi-Corrector**

Paeonol-infused serum with niacinamide and panthenol. Skin looks smoother and more youthful. 50 ml **496-595** reg. \$70

\$24.50 LOWEST PRICE EVER



**Isa Knox LXNEW Ultimate
Rejuvenating Dual Night Cream**

With paeonol and macadamia oil. Volume Cream, 25 ml: rice bran extract helps plump the look of skin. Firming Cream, 25 ml: helps skin look firmer. **564-015** reg. \$70

\$28 LOWEST PRICE EVER



**Isa Knox LXNEW Ultimate
Rejuvenating Balm Stick**

With peony extract, plus a complex featuring castor, moringa and argan oils. Apply to forehead, eyes and neck, or anywhere you want extra care. 7 g **267-593** reg. \$36

\$15 LOWEST PRICE EVER



**Isa Knox LXNEW Platinum
Sculpting Day Cream**

Infused with moisturizing hibiscus extract and ceramide. Helps tighten the look of facial contours. 50 ml **318-845** reg. \$70

\$28 LOWEST PRICE EVER



**Isa Knox LXNEW Platinum
Sculpting Neck and Chest Cream**

With hibiscus extract, ceramide, shea butter, panthenol and squalane to help skin appear firmer, smoother and lifted. 50 ml **548-069** reg. \$70

\$28 LOWEST PRICE EVER



**Isa Knox LXNEW Platinum
Sculpting Oil Serum**

Helps reduce the look of wrinkles and tighten the appearance of facial contours. 40 ml **318-720** reg. \$80

\$32 LOWEST PRICE EVER

HELPS SKIN
APPEAR
RESCULPTED

Isa Knox
LXNEW Platinum

SKIN CONCERN:

loss of firmness

THE ANSWER:

COLLAGEN BOOSTER

Formulated with **peptides**, **exfoliators** and **amino acids** to help skin look **firmer** and **smoother**.

Isa Knox Anew Clinical Collagen Booster Firming Cream
With peptides to help restore a more youthful looking appearance, and moisturizing niacinamide and squalane. Hygienic, airless pump. 50 ml
069-327
reg. \$65
\$42.99



Isa Knox Anew Clinical Collagen Booster Eye Lift Pro Dual Eye System
Helps eye area look lifted, firmer, tighter. With a peptide complex. Gel, 10 ml; cream, 10 ml. 564-550
reg. \$56
\$34.99



SKIN CARE



Isa Knox Anew Clinical Collagen Booster Rejuvenating Serum Ampoules
Powerful peptide blend. 60 capsulated single-use ampoules. 0.22 ml each.
803-077
reg. \$92
\$76.99



Isa Knox Anew Clinical Collagen Booster Microneedling Polisher
At-home alternative to microdermabrasion and microneedling. Diminishes the look of pores, fine lines and wrinkles. 50 ml
798-592
reg. \$48
\$29.99

See improvement in the look of wrinkles...and it moisturizes too.



Isa Knox Anew Clinical Revitalize & Reveal Advanced Wrinkle Corrector
Wrinkles appear reduced.
50 ml **470-100**
reg. \$56
NOW \$39.99



*In 6 out of 8 attributes tested over a 7-week period.

Isa Knox Anew Clinical Revitalize & Reveal Extra Strength Retexturizing Peel
Results similar to a 35% pro glycolic peel.*
30 fragrance-free pads, 5 cm diam. **632-774**
reg. \$56
NOW \$31.49



Isa Knox Anew Clinical Revitalize & Reveal Resurfacing Expert Smoothing Fluid
Like a pro microdermabrasion but without the same irritation. 30 ml **852-282**
reg. \$62
\$44.99

get more youthful looking skin

Reduce the look of wrinkles with retinol.



Isa Knox Anew Clinical Line Eraser with Retinol Targeted Treatment
For targeted lines and wrinkles such as around forehead and mouth. Use PM. 20 ml **925-159**
reg. \$56
NOW \$39.99



Isa Knox Anew Clinical Revitalize & Reveal Resurfacing Lotion for Body
Exfoliates with gentle yet effective AHA lactic acid. Moisturizes with shea butter. 150 ml **390-785**
reg. \$48
\$29.99



Isa Knox Anew Clinical Line Eraser with Retinol [1.0%] Advanced Retinol Serum
Our highest concentration of retinol. Reduces the appearance of fine lines, wrinkles and dark spots. Use PM. 30 ml **390-751**
reg. \$72
NOW \$43.49



Isa Knox Anew Clinical Line Eraser with Retinol Treatment
For overall fine lines and wrinkles. Great for first-time retinol users. Use AM/PM. 30 ml **763-330**
reg. \$63
NOW \$42.99

Anew Vitamin C Exfoliating Peel Pads

With PHA and pineapple extract, vitamin C, panthenol and glycerin. Helps brighten skin's look. 130 ml, 70 pads. **169-143** reg. \$40

NOW \$23.99



Anew Vitamin C Antioxidant Lip Treatment

Nourishes lips with vitamins C and E. 3.8 g

784-547

reg. \$20

\$13.99



Anew Vitamin C Brightening Eye Cream

Helps reduce the look of dark circles. Under-eye area looks brighter and more even toned. 15 ml

953-602

reg. \$48

NOW \$25.49



Anew Vitamin C Brightening Serum

Skin appears energized and brighter with the power of 10% pure vitamin C. 30 ml **522-066**

reg. \$62

\$38.99



Anew Vitamin C Illuminating Priming Moisturizer

Wear alone or under makeup.

50 ml **914-671**

reg. \$48

NOW \$25.49

C Spot Go

Vitamin C is known as the go-to skin brightener.

Now skin appears brighter in 1 week* with a concentrated formula to target uneven skin tone and dullness.



97%
agree

skin discolourations
appear to fade[†]

*In a clinical study.
†In a 4-week, consumer
perception study.

Anew Vitamin C Targeted Skin Brightener

With the triple-antioxidant power of 7% vitamin C, 2% ferulic acid and vitamin E, skin looks brighter and more even toned with a dramatically improved appearance in overall skin clarity. With moisturizing allantoin and aloe. 15 ml

169-177

reg. \$48

\$32.99

EVERY BODY WANTS TO LOOK RADIANT

Vitamin C, plus other skin-nourishing ingredients, helps your skin look brighter and smoother all over.



Anew Vitamin C Nourishing Body Butter
With hydrating shea butter and niacinamide, plus vitamins C and E to help restore the look of radiance. Fruity-floral and citrus scent.
230 ml 443-767
reg. \$45
\$28.99

Anew Vitamin C Glow Body Scrub
Sugar-based formula with pineapple and papaya enzymes, and coffee seed extract, exfoliates dry, dull skin. Citrus scent.
255 g 443-752
reg. \$50
\$28.99



Anew Vitamin C Dry Body Oil
Sunflower seed and jojoba oils help skin feel supple. 100 ml
074-432
reg. \$48
\$27.99



92% of women believe it dramatically improves skin's overall appearance.*

Anew Power Serum
Improves the look of wrinkles, radiance, firmness and texture. Use AM and PM after cleansing, before moisturizing. 30 ml
838-047
reg. \$63
\$41.99

*Based on those who expressed an opinion in a consumer perception study.



ISA KNOX
ANEW
SOLAIRE

Everyday Face Lotion
Broad Spectrum SPF 50
50 ml 281-418
reg. \$45
\$35.99

Active Face & Body Lotion
Broad Spectrum SPF 50
80 ml 531-435
reg. \$55
\$41.99

Everyday Mineral Face Protection Cream
Broad Spectrum SPF 50
Suitable for sensitive skin. Lightweight formula with zinc oxide. Water-resistant up to 40 minutes.
50 ml 941-708
reg. \$45
\$35.99



Cleanse while getting
a burst of hydration

belif Aqua Bomb Jelly Cleanser

A gentle jelly-to-foam cleanser with amino
acids and glycerin-based cleansing agents.
160 ml 445-353

\$40.50



Rejuvenate dull, fatigued skin by
locking in hydration all night long

belif Aqua Bomb Sleeping Mask

Jelly pudding textured face mask
replenishes with quick absorbing
hydration for a complexion that looks
radiant and glowing. 75 ml 514-717
reg. \$59

\$51.50



**Anew Hydra Fusion
De-Puffing
Eye Serum**

Eyes look and
feel refreshed.
With caffeine and
hyaluronic acid.
Boosts hydration
around eye area by
3X. 15 ml 137-737
reg. \$48

NOW \$24.49

**Anew Hydra Fusion
1.5% Hyaluronic
Acid Serum**

With 3 different
molecular sizes
of HA that reach
multiple layers of
skin's surface to
help plump the
look of skin. 30 ml
290-390
reg. \$62

NOW \$27.49

**Anew Hydra Fusion
Cleansing Micellar
Water**

No need to rinse off.
300 ml 139-380
reg. \$21

\$13.99

**Anew Hydra Fusion
Nighttime Facial
Treatment**

Hyaluronic acid plus
shea butter beads.
Relaxing rose scent.
50 ml 139-429
reg. \$48

NOW \$24.49

**Anew Hydra Fusion
Gel Cream**

Lasting hydration.
Helps skin appear
smoother. 50 g
266-893
reg. \$48

NOW \$24.49



NORMAL TO DRY SKIN

**Isa Knox LXNEW Clean
Nourishing Cream Cleanser**

Removes impurities and makeup while
restoring moisture. 150 ml **717-990**
reg. \$21

\$16.99



NORMAL, DRY AND COMBINATION SKIN

**Isa Knox LXNEW Clean
Balancing Gel Cleanser**

Gel to foam. Helps remove oil and impurities.
150 ml **718-010**
reg. \$21

\$16.99



OILY TO NORMAL SKIN

**Isa Knox LXNEW Clean
Soothing Whipped Oil Cleanser**

Helps eliminate impurities and excess oil.
150 ml **718-025**
reg. \$27.50

\$20.99

Avon Solutions Banishing Serum
An intensive serum with ingredients
known to help improve the appearance
of dark spots and the look of uneven
skin tone. 30 ml **507-905** reg. \$25
\$19.99

**Avon Solutions
Dramatic Firming Serum**
This moisturizing serum contains
effective anti-aging ingredients
that help promote a more youthful
appearance. 30 ml **507-871**
reg. \$25
\$19.99

Avon Solutions Nurtura Serum
With nourishing ingredients known
to help combat dryness and flakiness,
and help hydrate. 30 ml **507-924**
reg. \$25
\$19.99



**Avon Solutions
Dramatic Firming
Cream**
Skin looks
and feels smoother.
50 ml
374-657
reg. \$21
\$15.99



**Avon Solutions
Nurtura
Replenishing
Cream**
Adds moisture
to dry skin. 50 ml
908-263
reg. \$21
\$15.99



**Avon Solutions
Banishing Cream
Skin Discoloration
Improver**
Helps improve the
look of skin tone.
50 ml
267-115
reg. \$21
\$15.99



**Avon Solutions
Anti-Aging Cream**
Moisturizing formula
helps to smooth the
appearance of fine
lines and wrinkles.
50 ml
949-460
reg. \$21
\$15.99

Best of
K-Beauty



**Rice Water Bright
Facial Massage
Cream**

With rice water, vitamins A, B and E, ceramide and minerals. After cleansing, massage into skin 2-3 times a week. 200 ml **450-200** reg. \$35
\$27.99

**Rice Water Bright
Foaming Cleanser**

Light whipped foam. With rice water and soapwort extract. Helps skin look clearer and brighter. 300 ml **508-093** reg. \$27
\$20.99

**Rice Water Bright
Rice Bran
Gentle Exfoliating
Cleanser**

Daily scrub with organic rice bran powder, rice bran oil and hydrated silica. 300 ml **376-865** reg. \$27
\$20.99

**Rice Water Bright
Cleansing Facial
Wipes**

Great on the go. With rice extract to moisturize while cleansing. Removes eye makeup. 50 wipes. **508-108** reg. \$18
\$13.99



**Smaller Size!
Rice Water Bright
Foaming Cleanser**
Light whipped foam. With rice water and soapwort extract. Convenient size for your bathroom cabinet. 150 ml **478-479** reg. \$18
\$13.99



**Rice Water Bright
Mild Cleansing
Water**
Removes impurities via the micellar method, so no need to rinse off! 500 ml **288-360** reg. \$25
\$19.99



**Rice Water Bright
Facial Cleansing
Lotion**
Helps brighten the appearance of skin. Gently removes makeup and impurities. 200 ml **720-184** reg. \$20
\$15.99

**Rice Water Bright
Light Facial Cleansing Oil**
With jojoba oil and rice water extract, known to moisturize and help brighten the look of skin. 150 ml **720-199** reg. \$28
\$21.99



MAKEUP

Discover makeup that lets
the real you shine through.
Try before you buy with our
virtual makeover tool at
avon.ca/category/makeup.

Best of
K-Beauty

MAXIMUM IMPACT.
minimal effort.



**GO. by Glimmer
Lacquered Lip Gel**
Ultimate fusion of shiny
gloss and tinted lip colour
in one. Non-sticky formula
with gel-like texture glides
on and helps to leave lips
feeling soft and cushioned.
Infused with a Super-
Fruit Extract Complex
that includes noni,
passionflower and
amla extract. Buildable
coverage with a glossy
finish. Formulated without
parabens, talc, sulfates,
phthalates and mineral
oil. 4 g
reg. \$24
\$18.99

NEW SHADES



Soft
922-327



Fruity Floral
922-312



Whisper Pink
750-114



Sunset Rose
750-205



Waffle Cone
750-023



Orchid Bloom
750-320



Seeing Red
750-391



Currant Crush
750-478

Best of
K-Beauty

GO. by Glimmer

Whipped Lip & Cheek Tint

Ultimate multitasker delivers beautiful colour for lips and cheeks. With apple fruit extract, an antioxidant known to help support glowing and smooth looking skin. Full pigmented coverage with a velvety matte powder finish. Formulated without parabens, talc, sulfates, phthalates and mineral oil. 4.2 g reg. \$26
\$19.99



Featured shades: Go. by Glimmer Whipped Lip & Cheek Tint in Frozen Pink and Lacquered Lip Gel in Sunset Rose.



NEW SHADES

	
Velvet Vanilla 922-293	Cherry Cocktail 922-289
	
Peony 749-865	Hibiscus Tea 750-019
	
Jam 749-850	Flora 749-956
	
Frozen Pink 749-994	Blushed 749-870

LIPS. CHEEKS. GO.

GO YOUR OWN WAY.

GO. BY GLIMMER
BLUSH LAYERING SET

Add depth and dimension to cheeks with a combo of shades. Start with Peony at the apple of the cheek and then overlay Flora, blending out towards the temples.

GO. by Glimmer
Whipped Lip & Cheek Tint in Peony

GO. by Glimmer
Whipped Lip & Cheek Tint in Flora

fmg Glimmer
SuperShock Volumizing Mascara
10 ml

3-PIECE SET

\$40.99

\$71 VALUE
063-261



GO. BY GLIMMER
LIP OMBRÉ SET

Enhance your pout with an easy ombré effect. Apply Currant Crush to entire lip, let dry. Then add Whisper Pink to the centre of lips, lightly blending outwards.

GO. by Glimmer
Lacquered Lip Gel in Currant Crush

GO. by Glimmer
Lacquered Lip Gel in Whisper Pink

fmg Glimmer
SuperShock Volumizing Mascara
10 ml

3-PIECE SET

\$40.99

\$67 VALUE
063-204





fmg Glimmer Matte Lipstick
Vivid colour. Velvety feel. Featherlight non-drying formula with pomegranate extract. Buildable medium to full coverage. Formulated without parabens, talc, sulfates and phthalates. 3 g reg. \$17
\$13.99



Featured shade: Chili.

- Sunset Mauve 171-360
- Terra Nova 171-340
- Garnet Sky 171-393
- Wild Orchid 171-431
- Willow 171-450
- Chili 171-355



power up your lips

fmg Glimmer Satin Lipstick
Lightweight creamy formula with pomegranate extract. Buildable coverage. Satin finish. Formulated without parabens and sulfates. 3 g reg. \$17
\$13.99



Featured shade: Blaze.

party on!

**fmg Glimmer
Birthday Balm Lip Crayon**
Sheer, soft shine formula with
non-GMO shea butter. Formulated
without parabens and gluten. 2.7 g
reg. \$24
\$17.99

Featured shades (top to bottom):



fmg LOVE Lip Butter
Sheer, high-shine
formula with cupuaçu
seed butter, mango
extract, and apricot
kernel and olive fruit
oils. Buildable coverage.
Formulated without
parabens, sulfates and
phthalates. 2.7 g
reg. \$27
\$20.99



Featured shade:
fmg LOVE Lip Butter
in Love Affair.

**fmg GLOKOLOR
Lip Serum Pencil**
Refreshes and
smooths lips. With
peppermint and argan
oils. Formulated
without parabens and
fragrance. 1.8 g
787-508
reg. \$29
\$23



**fmg Glimmer
Lip Conditioner**
Leaves dry, cracked lips
feeling soft and smooth.
With mango seed butter,
vitamin E, and jojoba
and sunflower seed oils.
Formulated without
parabens, sulfates,
phthalates and talc.
3.5 g 794-578
reg. \$17
\$13.99





shimmer that wows

fmg Glimmer Liquid Eyeshadow

Silky cream formula glides on effortlessly for a soft subtle sheen that lasts all day. Water resistant. Will not smudge or crease. No messy fallout. Buildable coverage. Formulated without parabens, phthalates and sulfates. 2 ml reg. \$20

\$15.99

BESTSELLING SHIMMER SHADES ARE BACK!



Featured shades (top to bottom): Rose Gold, Diamond Dust, Crystal Lilac, Pink Topaz, Citrine, Moonstone, Sunstone, Fool's Gold, Tiger's Eye.

fmg CathyCat Shadow Gaze Matte Color Stick

Long-wearing formula will not budge or smudge. Buildable and blendable coverage. Matte finish. Formulated without parabens and fragrance. 1.35 g reg. \$27

\$20.99



fmg CathyCat Nine Lives Precision Liquid Eyeliner

Slim-tip brush delivers a precise line of water- and sweat-resistant colour that will not skip, tug or smudge. Formulated without parabens, sulfates, phthalates and talc. 2 ml Blackest Black 800-829 reg. \$26

\$19.99



fmg LOVE at 1st Sight Eyeshadow Palette

Nine buildable matte and shimmer shades create depth and dimension. Versatile formula with antioxidant vitamin E blends seamlessly. Formulated without parabens, phthalates, talc and fragrance. 6.48 g **786-076** reg. \$37

\$28

fmg Glimmer Eyeshadow Quad

Soft powder formula lasts all day. No messy fallout. Buildable coverage. Formulated without parabens and fragrance. 6 g reg. \$25

\$19.99



fmg Glimmer Liners for Eyes, Brows and Lips

Long wearing and retractable. Formulated without parabens, sulfates and talc. 0.28 g reg. \$13

\$6.49 each

LIP LINERS

 Honey Peach 327-721	 Lava Red 327-740	 Passion Red 327-650	 Red Brick 330-451	 Pink Bouquet 330-356	 Merlot 330-284
 Chocolate 330-667	 Simply Spice 330-614	 Mystery Mauve 330-538	 Candy Apple 327-903	 Perfect Plum 330-887	 Au Naturel 330-318

EYELINERS

 CREAM Emerald Green 334-332	 CREAM Starry Night 334-347	 CREAM Saturn Grey 334-328	 CREAM Majestic Plum 334-313	 CREAM Cosmic Brown 334-351	 CREAM Blackest Black 334-366
 DIAMOND Sterling 331-960	 DIAMOND Teal Sparkle 331-606	 DIAMOND Olive 331-940	 DIAMOND Twilight Sparkle 331-553	 DIAMOND Sugar Plum 331-625	 DIAMOND Purple Rain 332-071
 DIAMOND Smoky Diamond 331-280	 DIAMOND Brown Sugar 331-568	 DIAMOND Black Ice 331-610	 WATERPROOF Blue Skies 334-237	 WATERPROOF Raisin 332-200	 WATERPROOF Brown Chocolate 332-124
 WATERPROOF Seafoam Green 334-241	 WATERPROOF Smoky Grey 332-162	 WATERPROOF Blackest Night 229-491	 WATERPROOF Midnight Blue 332-158		

BROW DEFINERS

 Light Blonde 331-109	 Blonde 331-113	 Tawny 331-128	 Light Brown 331-151	 Dark Brown 331-147	 Brunette 331-242
---	---	--	---	---	---

fmg Glimmer Liquid Color Eyeliner Pen

Felt tip applicator glides on smoothly and provides precise application. Highly pigmented, lightweight formula is smudge/transfer/sweat-proof.* Formulated without parabens, talc, mineral oil, phthalates and fragrance. 1.2 ml reg. \$19

\$15.99

 Chestnut 519-503	 Indigo 519-499	 Forest 519-518	 Smoked 519-537
---	---	---	---

*Based on Consumer Home Use Test Study of 62 applicants.

fmg Glimmer Liquid Eyeliner

Quick drying, long lasting formula. Transfer-, sweat- and waterproof. Matte finish. Formulated without parabens, phthalates and fragrance. 1.1 ml **Blackest Black 354-380** reg. \$18 **\$15.99**

fmg Glimmer Always On Point Eyeliner

Built-in sharpener. Smudge/waterproof. Formulated without parabens, sulfates and talc. 0.25 g **Black 016-389** reg. \$15 **\$11.99**

MICRO TIP

creates realistic hair-like strokes

MATTE FINISH

buildable, long wearing, creamy, yet firm formula



NEW

fmg Glimmer Fine Line Brow Pencil

Sweat/smudge-proof, yet easy to remove.** Retractable. Vegan. Formulated without parabens, talc, sulfates, fragrance and mineral oil. 4.1 g reg. \$14

\$9.99

 Blonde 888-206	 Soft Medium 888-230	 Medium 888-278	 Dark 888-282
---	--	---	---

**Based on Consumer HUT Study of 22 applicants.

SPOOLIE

blends and grooms for a natural look



**bold brows &
lush lashes**



**fmg Colors of LOVE
Hi-Brow Tinted Brow Gel**
24-hour water-resistant
formula with heart-shaped
fibres, clay and vitamin E.
Won't clump, smudge or flake.
Matte finish. Formulated
without parabens, phthalates
and fragrance. 3.3 ml
reg. \$27

~~\$20.99~~ **\$15.49**



**fmg Colors of LOVE
Hi-Brow Sculpting Brow Gel**
Clear formula with aloe and
hyaluronic acid. Flake-proof.
Matte finish. Formulated without
parabens, phthalates and
fragrance. 3.3 ml
536-695
reg. \$27

~~\$20.99~~ **\$15.49**



**fmg Glimmer SuperShock
Volumizing Mascara**
Lash-building formula with
plumping fibres. High-gloss
finish. Won't clump, smudge
or flake. Formulated without
phthalates and fragrance.
10 ml
Black 698-829
reg. \$19

~~\$15.99~~ **\$11.99**



**fmg Glimmer SuperExtend
Nourishing Mascara**
Long-wearing lengthening
formula with vitamin E, argan
and coconut oils. Won't clump,
smudge or flake. Formulated
without sulfates and talc.
7 ml
Black 698-848
Brown Black 698-852
reg. \$19

~~\$15.99~~ **\$11.99**



**fmg Cashmere
Ultimate Volume Mascara**
Volumizing with biotin and a
vegan alternative to collagen
to help keep lashes looking
healthy and strong. Glossy
black finish. Formulated
without parabens, sulfates
and talc. 8 ml
Rich Black 153-736
reg. \$35

~~\$26.99~~ **\$19.99**



**fmg LOVE at 1st Lash
Mascara**
Lash-loving volumizing
and lengthening fibres.
With lycopene, olive oil and
vitamin E. Won't clump,
smudge or flake. Formulated
without parabens and sulfates.
9 ml
Blackest Black 698-670
reg. \$27

~~\$20.99~~ **\$15.49**



**fmg LOVE at 1st Lash
Waterproof Mascara**
Lash-loving, waterproof formula
with volumizing and lengthening
fibres. With Lashrez, olive oil
and vitamin E. Won't clump,
smudge or flake. Formulated
without parabens and sulfates.
8.5 ml
Blackest Black 480-953
reg. \$27

~~\$20.99~~ **\$15.49**



**fmg Glimmer Wash-Off
Waterproof Mascara**
Waterproof volume.
Washes off easily with soap
and water. Formulated
without phthalates and
fragrance. 6 g
Black 535-560
reg. \$17

~~\$13.99~~ **\$10.49**



**fmg Cashmere
Eyelash Primer**
With biotin and collagen
amino acids to help keep
lashes looking healthy
and strong. Maximizes the
performance of any mascara
for gorgeous, lush lashes.
Formulated without parabens,
sulfates and talc. 10.5 ml
324-369
reg. \$35

~~\$26.99~~ **\$19.99**



at first blush...

Featured shade:
fmg Glimmer Be Blushed
Cheek Color in Tropical Peach

fmg Glimmer Be Blushed Cheek Color
Creamy formula with vitamin E. Buildable coverage. Dewy finish. Formulated without parabens, phthalates and fragrance. 4 g reg. \$24

\$17.99



fmg Glimmer Powder Blush
Weightless formula with ultrafine pearl and vitamin E. Buildable coverage. Matte finish. Formulated without parabens, phthalates and fragrance. 8 g reg. \$21

\$16.99



fmg Glimmer Powder Illuminator
Lightweight buildable formula with vitamin E. Radiant finish. Formulated without parabens, phthalates and fragrance. 10 g reg. \$21

\$16.99



fmg Glimmer Lip & Cheek Stain
Highly pigmented long-wearing gel formula. Brush-tip applicator. Transfer-proof. Formulated without parabens and fragrance. 5.5 ml reg. \$24

\$18.99



fmg Colors of LOVE Glow Balm Duo Illuminating Stick
Sheer formula with blend of pomegranate extract, mango and shea butter, vitamins E and C, and avocado oil. Soft, pearlescent finish. Formulated without parabens, phthalates and fragrance. 8 g 924-573 reg. \$30

\$24.99



way to glow

Silky, liquid pearl formula with a soft filter effect and hint of tint in sheer, flexible shades.

fmg Match Airbrush Retouch Tinted Primer
Helps even the look of skin tone and provides a lit-from-within dewy complexion. With skin-loving ferulic acid, panthenol (provitamin B5) and niacinamide. Formulated without parabens, phthalates, fragrance and talc. 30 ml reg. \$30

\$23.99



meet your match

fmg Match Tint Radiant Tinted Moisturizer
Brightens the look of skin tone, boosts moisture and blurs the appearance of flaws. With passion fruit, chia and sunflower seed oils, vitamin E and pro-vitamin B5. Buildable coverage. Radiant finish. Formulated without parabens. 30 ml reg. \$27

\$20.99



fmg Match Prime Face Perfector
Flaw-blurring mattifying oil-free formula minimizes the look of pores and fine lines. Sheer coverage. Matte finish. Formulated without parabens. 30 ml 103-744 reg. \$27

\$20.99



fmg Match Filter Serum Tint Foundation
Instantly hydrates, blurs and evens tone. With hyaluronic acid, vitamin E and berry complex. Buildable coverage. Demi-matte finish. Formulated without talc, parabens and fragrance. 9 g reg. \$30

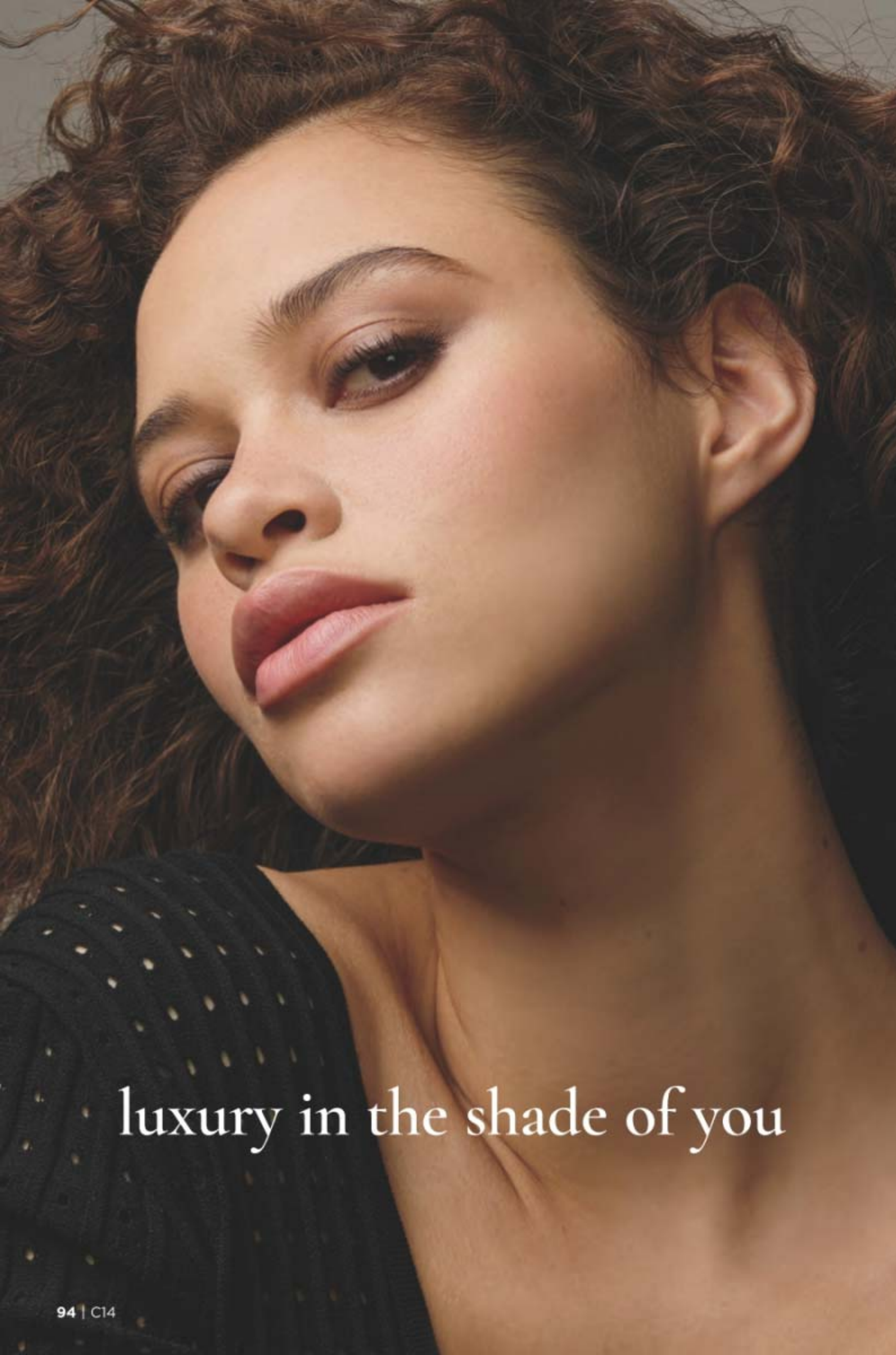
\$23.99



fmg Match Wand Correcting Stick
Neutralizes unevenness, brightens and colour corrects. Long-wearing formula with shea butter and vitamin E. Formulated without parabens, phthalates and sulfates. 6 g reg. \$27

\$20.99





luxury in the shade of you

fmg Cashmere 24 Hour Foundation*

Up to 24 hours of comfortable, breathable wear. Full, flexible coverage. Soft-focus matte finish. Helps blur the appearance of pores and fine lines for a smoother looking complexion. With antioxidant botanical extracts. Water-resistant. Formulated without parabens, phthalates and sulfates. 30 ml reg. \$45

\$34.99



fmg Cashmere Compact Powder Foundation*
Targets shine. Can be used wet or dry. Buildable medium to full coverage. Matte finish. With antioxidant botanicals. Formulated without parabens, phthalates and sulfates. 11.5 g reg. \$52

\$44.99



fmg Cashmere Cream Concealer

Long-wearing formula helps to camouflage dark circles and uneven skin tone. With hyaluronic acid and collagen. Full coverage. Matte finish. Formulated without parabens, phthalates, talc and fragrance. 6 g reg. \$23

\$17.99

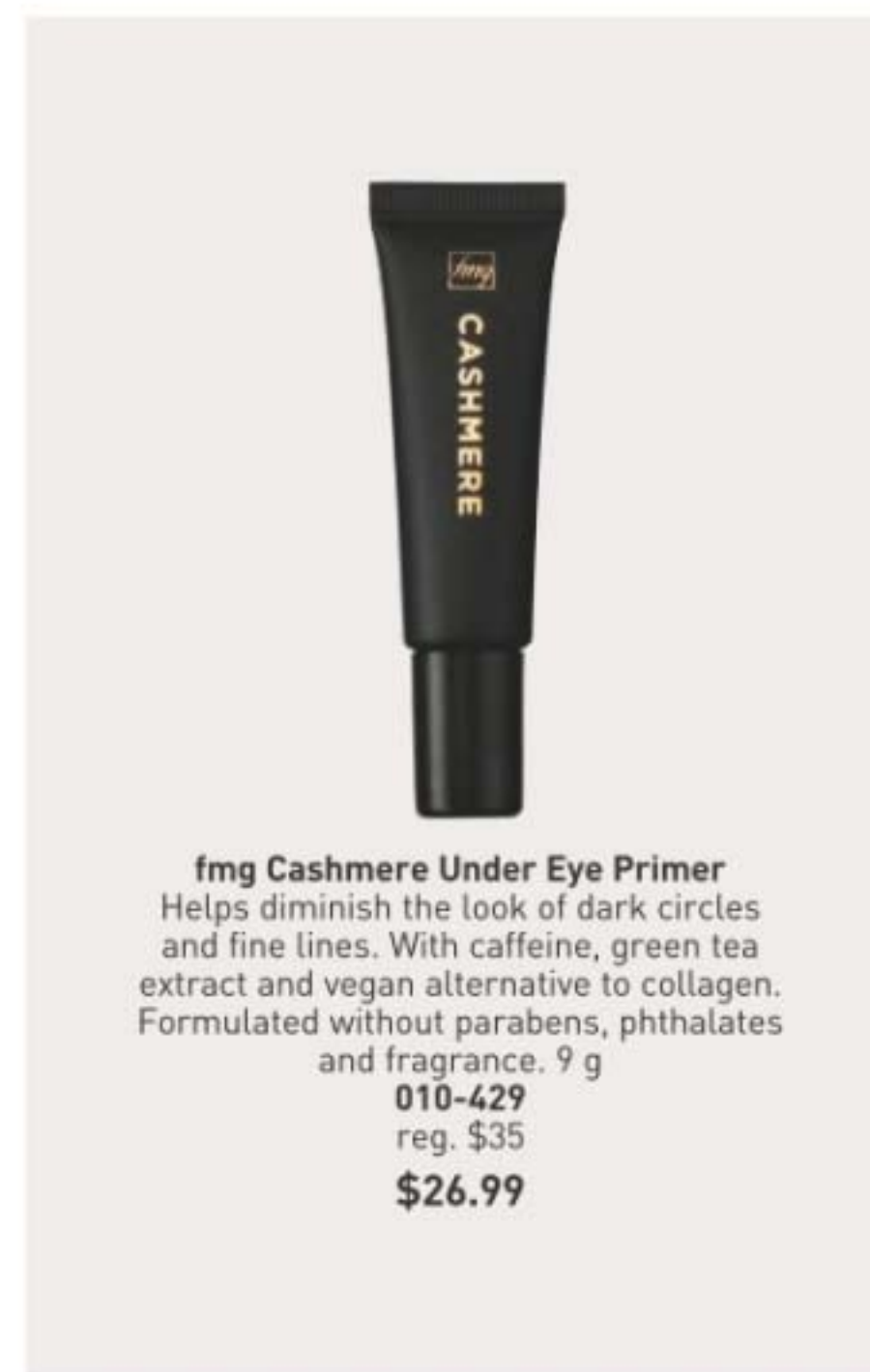




a makeup skinnovation



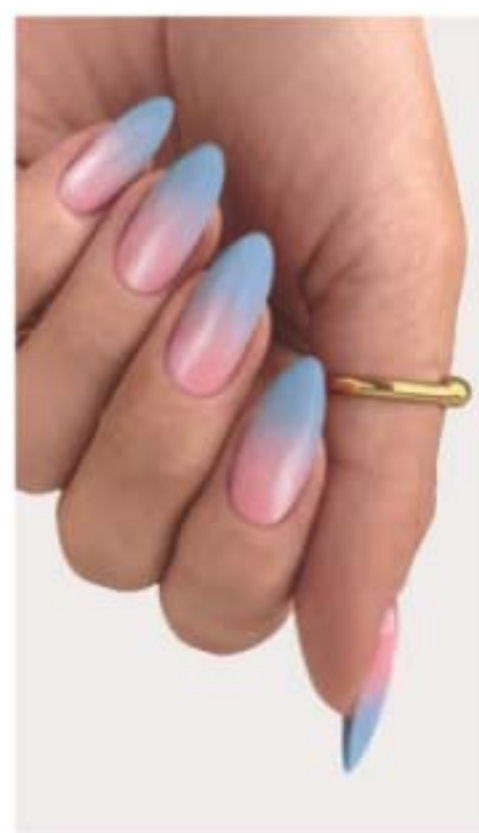
fmg Cashmere Multi-Peptide Eyeshadow Primer
Keeps eyeshadow in place and intensifies the colour. Skin-loving sheer formula with Matrixyl 3000 peptide blend, hyaluronic acid, collagen and panthenol. Formulated without parabens and talc. 9 g
906-385
reg. \$35
\$26.99



fmg Cashmere Under Eye Primer
Helps diminish the look of dark circles and fine lines. With caffeine, green tea extract and vegan alternative to collagen. Formulated without parabens, phthalates and fragrance. 9 g
010-429
reg. \$35
\$26.99



fmg Cashmere Multi-Peptide Face Primer
Revitalizing ingredients help to smooth the appearance of fine lines and pores. Sheer gel formula with Matrixyl 3000 peptide blend, hyaluronic acid, collagen and niacinamide. Formulated without parabens, talc and fragrance. 30 ml
739-284
reg. \$34
\$27.99



- | | | |
|---|---|---|
|  |  |  |
| SHIMMER
Carnation
Constellation
042-897 | SATIN
Astronautical
Blue
042-878 | SATIN
Magenta
Retrograde
042-882 |
|  |  | |
| SATIN
Full Moon
Flush
018-730 | SATIN
Night Sky
Berry
602-658 | |
|  |  | |
| SATIN
High
Magnitude
Mauve
018-840 | SATIN
Supernova
Red
018-267 | |

fmg Glimmer Nail Lacquer
Nail-strengthening, long-wearing, no-chip formula. Gel-like cushion texture. Formulated without parabens and phthalates. 12 ml reg. \$17
\$13.99



LIMITED EDITION

fmg Glimmer Glitz A-Peel Nail Lacquer

Glittery quick-dry formula stays on until you're ready to peel it off. Glossy finish. Formulated without parabens, toluene, formaldehyde and camphor. 12 ml reg. \$18

\$13.99

- | | | |
|---|---|---|
|  |  |  |
| Leading Lady
538-430 | Best in Class
538-459 | Newlywed
538-425 |



just peels off
for fuss-free
removal



fmg Glimmer Nourished Nail Cuticle Oil

Nourishing formula for dry, damaged cuticles. Fortified with safflower oil to help restore and condition nails and cuticles. Formulated without phthalates, sulfates, parabens, toluene, formaldehyde and camphor. 12 ml
612-894
reg. \$20

\$15.99



fmg Glimmer Nail Base & Top Coat

2-in-1 base and top coat primes and shields nails. Glossy finish. Formulated without parabens and phthalates. 12 ml
018-161
reg. \$17

\$13.99



fmg Glimmer Nail Air Dry Drops

Need a fast finish? Accelerate your dry time with just a drop or two! Helps prevent smudges and nicks. Formulated without phthalates, sulfates, parabens, toluene, formaldehyde and camphor. 12 ml
612-913
reg. \$20

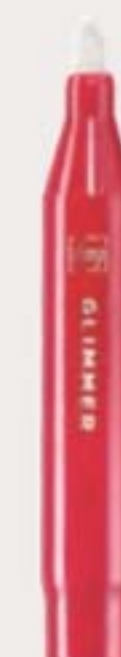
\$15.99



fmg Glimmer Nail Lacquer Eraser Pen

For a clean and perfected mani. Won't dry out nails or cuticles. Formulated without parabens and phthalates. 4 ml
704-443
reg. \$17

\$13.99





fmg Oil Rewind Roller Ball
Reusable 360° rotating volcanic stone roller instantly absorbs oil and grease without disturbing makeup. 8 cm L x 3 cm W. Plastic handle, protective cap. **508-294**
reg. \$27
\$20.99



fmg Set & Fix Spray
Helps keep makeup smudge-proof. Non-greasy, non-sticky. Formulated without parabens, sulfates, phthalates and silicones. 50 ml **416-707**
reg. \$21
\$15.99



fmg Express Makeup Brush Wash
Easily removes dirt, oil and makeup. With aloe vera and green tea extract. Formulated without alcohol and sulfates. 30 ml **141-368**
reg. \$22
\$16.99



fmg Flawless Complexion Sponge
Dual ended: all-over makeup application rounded end, and contouring and concealing flat end. 6 cm L x 4 cm W. 100% PU, latex-free. **140-160**
reg. \$15
\$11.99



fmg Kabuki Brush
Soft, angled brush for pressed or loose powders. Retractable with protective cap. 10 cm L x 3 cm diam. Synthetic bristles. **732-370**
reg. \$28
\$22.99



Daily Beauty Tools Tweezers
Amp up your beauty routine with angled tweezers. Stainless steel. 9 cm L. **747-020**
reg. \$6
\$4.99

brush with greatness



fmg Complexion Blending Brush
Dual ended: rounded buffing foundation brush and concealer brush. 17 cm L. Synthetic bristles. **933-210**
reg. \$35
\$26.99

fmg Precision Eye Brush
Dual ended: pointed pencil brush and angled eyeliner brush. 13 cm L. Synthetic bristles. **933-187**
reg. \$24
\$17.99

fmg Eyeshadow Blending Brush
Dual ended: crease brush and all-over eyeshadow brush. 15 cm L. Synthetic bristles. **933-320**
reg. \$24
\$17.99

fmg Blush & Contour Brush
Dual ended: angled contour brush and tapered, oval blush brush. 18 cm L. Synthetic bristles. **933-259**
reg. \$32
\$24.99



fmg Waterproof Lip & Eye Makeup Remover
Dual-layer oil and water remover leaves skin fresh and clean. Formulated without mineral oil, tar, talc and parabens. 110 ml **352-243**
reg. \$17
\$11.99



fmg Moisturizing Eye Makeup Remover Lotion
Cleans, refreshes and moisturizes as it whisks away eye makeup. Formulated without parabens, sulfates and phthalates. 75 ml **037-978**
reg. \$12
\$8.99



fmg Unready Makeup Remover Cloth
Dual sided. Reusable and travel friendly. 100% polyester. 25 cm sq. Machine wash and dry. **230-176**
reg. \$22
\$16.99



fmg Makeup Remover Wipes
With vitamin E and aloe, chamomile, cucumber, marshmallow root and oat extracts. Resealable pack of 24 wipes. Formulated without parabens, gluten, sulfates, phthalates and fragrance. **333-867**
reg. \$17
\$11.99



fmg Vanity Organizer
4 compartments with 2 removable inside dividers, 3 outer pockets and lattice elastic straps. Folds for easy storage. 24 cm L x 15 cm W x 13 cm H. Polyester. **022-816**
reg. \$45
\$34.99

FRAGRANCE

From alluring eau de parfums to spirited colognes, fresh florals to woody notes, each scent in our collection lets you express yourself.

elegant yet wild

NEW

fresh citrus

LYRD
Clementine & Poppy
Eau de Parfum
50 ml 922-384
reg. \$63
\$49

Top: Fresh Air
Accord, Blood
Orange, Clementine,
Bergamot, Black
Currant
Mid: Guava, Poppy
Flowers, Orange
Blossom, Jasmine,
Tuberose
Base: Cashmere
Woods, Sheer Musk



lush &
invigorating



amber floral
LYRD Vanilla Rose
Eau de Parfum
Dewy roses, comforting
vanilla and cedarwood.
50 ml 094-020
reg. \$60
\$49

NEW

fresh green floral
LYRD Pear Blossom & Bamboo
Eau de Parfum
50 ml 763-804
reg. \$63
\$49



Top: Lemon Zest, Lavender, Kumquat, Dewy Bamboo
Mid: Magnolia, Sweet Pear Blossom, Water Lily
Base: Cashmere Woods, White Amber, Skin Musk



LYRD Vanilla Rose
Eau de Parfum Travel Spray
10 ml 505-128
reg. \$27
NOW \$15.49



LYRD Sultry Orchid
Eau de Parfum Travel Spray
10 ml 612-799
reg. \$27
\$20.99



amber floral
LYRD Sultry Orchid
Eau de Parfum
Pink saffron, red orchid and warm
amber. 50 ml 892-960
reg. \$60
\$49

it's your time to bloom

soft floral

LYRD Honeysuckle Blossom Eau de Parfum

Apple blossom, honeysuckle nectar and vanilla orchid. 50 ml **167-270** reg. \$48

\$36



LYRD Honeysuckle Blossom Hair and Body Mist*

Lightweight formula with notes of apple blossom, honeysuckle nectar and vanilla orchid. Leaves hair with a subtle, healthy-looking shine. 96 ml **167-231**

reg. \$27

\$20.99



LYRD Peony Rosé Hair and Body Mist*

Lightweight formula with notes of peony petals, pink currant and sheer musk. Leaves hair with a subtle, healthy-looking shine. 96 ml **167-212**

reg. \$27

\$20.99



fresh green floral

LYRD Coastal Lotus Eau de Parfum

Sparkling mandarin, island gardenia and lotus flower. 50 ml **869-906**

reg. \$60

\$49



LIMITED EDITION

❖ **LYRD Candle - Some Like It Hot**
Creamy coconut, juicy mandarin and warm vanilla. Up to 30 hours of burn time. 198.4 g. 8 cm diam. x 9 cm H. Glass jar/soy-blend wax.

746-450

reg. \$35

\$28.49



LIMITED EDITION

❖ **LYRD Candle - Back From The Beach**
Orange blossom, water lily and musk. Up to 30 hours of burn time. 198.4 g. 8 cm diam. x 9 cm H. Glass jar/soy-blend wax.

747-035

reg. \$35

\$28.49



LIMITED EDITION

❖ **LYRD Candle - Surf's Up, Bottoms Up**
Ripe banana, tropical rum and sweet whipped cream. Up to 30 hours of burn time. 198.4 g. 8 cm diam. x 9 cm H. Glass jar/soy-blend wax.

746-445

reg. \$35

\$28.49



LIMITED EDITION

❖ **LYRD Candle - Bonfire**
Earthy oakmoss, salty beach wood and fiery amber. 312 g candle gives up to 28 hours of burn time. 11 cm diam. x 8 cm H. Wooden wick, glass jar, soy-blend wax.

765-625

reg. \$35

\$27.99

Place candle on trivet or holder before lighting to protect furniture.
Never leave burning candles unattended. Keep away from children and animals.



amber floral

LIVE OUT LOUD U BE U

Top: Nectarine, Cardamom, Marshmallow
Mid: Sweet Fig, Coconut Praline, Jasmine
Base: Whipped Vanilla, Creamy Woods, Musk

Body Cream 048-000

Body Mist 047-114

Both for \$34.99 654-350

fruity floral

LIVE OUT LOUD RETRO SUN

Top: Guava, Tropical Mango, Tangerine
Mid: Plumeria, Orange Flower, Creamy Coconut
Base: Rich Amber, Moss, Cedarwood

Body Cream 047-300

Body Mist 047-076

Both for \$34.99 654-130

fruity floral

LIVE OUT LOUD GUILT FREE

Top: Bergamot, Plum, Pink Dragon Fruit
Mid: Muguet, Rose, Violet Leaf
Base: Sandalwood, Vanilla, Creamy Musk

Body Cream 047-320

Body Mist 047-100

Both for \$34.99 654-179

CREAM + MIST \$34.99 (same scent)

IT'S YOUR LIFE, OWN IT.

Express yourself with an exciting, affirmative statement of pure confidence, fierce independence and vibrant energy.

NEW

Live Out Loud Body Cream

Fluffy, whipped cream with hyaluronic acid moisturizes, leaving skin soft, glowing and beautifully scented. 150 ml reg. \$32

\$23.99 each

NEW

Live Out Loud Body Mist

Lightweight, refreshing mist absorbs quickly and leaves skin feeling soft, supple and beautifully scented. 100 ml reg. \$34

\$25.99 each





fruity floral

Live Out Loud #4U Eau de Parfum
Mandarin, peach blossom and
vanilla. 50 ml **735-968**
reg. \$56

NOW \$31.49



fruity floral

Live Out Loud Eau de Parfum
Strawberry, mimosa and vanilla.
50 ml **142-000**
reg. \$56

\$42



fruity floral

**Live Out Loud Solar Vibes
Eau de Parfum**
Bergamot, coconut water
and fluffy marshmallow. 50 ml
835-822 reg. \$56

NOW \$31.49

love begins with you



soft floral

Today Eau de Parfum
Magnolia blossoms, hibiscus
petals and silk musk. 50 ml
490-855
reg. \$56

\$42

Best of
K-Beauty

amber floral

**Avon Moments
Out On A Limb
Eau de Toilette**
Spicy cardamom,
honeyed mimosa
flower and
powdery
vanilla. 50 ml
196-112
reg. \$45
\$34.99

amber floral

**Avon Moments
Remember That Night
Eau de Toilette**
Sparkling grapefruit,
opulent jasmine
and amber. 50 ml
196-662
reg. \$45
\$34.99

fruity floral

**Avon Moments
Day Dreamer
Eau de Toilette**
Quince, dewy iris
and cedarwood.
50 ml **196-772**
reg. \$45
\$34.99



**Avon Moments
Out On A Limb Body Wash**
230 ml **196-442**
reg. \$24
\$19.99



**Avon Moments
Remember That Night Body Wash**
230 ml **196-768**
reg. \$24
\$19.99



**Avon Moments
Day Dreamer Body Wash**
230 ml **196-844**
reg. \$24
\$19.99



**Far Away
Body Lotion**
200 ml
\$20 value

Sold separately on page 118.

free

WITH ANY TWO
FAR AWAY BRAND
EAU DE PARFUM
PURCHASES,
PAGES 114-115
Limited quantities.



**Haiku
Body Lotion**
200 ml
\$20 value

Sold separately on page 119.

free

WITH ANY TWO
HAIKU BRAND
EAU DE PARFUM
PURCHASES,
PAGE 113
Limited quantities.



**Rare Pearls
Body Lotion**
200 ml
\$20 value

Sold separately on page 118.

free

WITH ANY TWO
RARE BRAND
EAU DE PARFUM
PURCHASES,
PAGE 116
Limited quantities.



serene. divine. elegant.

fresh green floral
Haiku Eau de Parfum
Yuzu, muguet and
blonde woods.
50 ml **521-170**
reg. \$42
\$31.99



woody floral
Haiku Sunrise Eau de Parfum
Coconut water, rhubarb and
cedarwood. 50 ml **091-500**
reg. \$42
NOW \$23.99



fresh green floral
**Haiku Kyoto Flower
Eau de Parfum**
Violet leaf, white peony and cotton
musk. 50 ml **144-352**
reg. \$42
\$31.99



fresh green floral
Haiku Reflection Eau de Parfum
Water accord, acacia blossom
and amber wood. 50 ml **617-657**
reg. \$42
\$31.99



fruity floral

Far Away Bali Eau de Parfum
Grapefruit, salted tuberose
and amber. 50 ml **451-389**
reg. \$42
NOW \$17.49



amber floral

Far Away Eau de Parfum
Freesia, jasmine and amber.
50 ml **685-712**
reg. \$42
\$31.99



fruity floral

Far Away Infinity Eau de Parfum
Bergamot, jasmine sambac
and sandalwood. 50 ml **888-301**
reg. \$42
\$31.99



amber floral

Far Away Gold Eau de Parfum
Ylang-ylang, jasmine
and vanilla. 50 ml **888-297**
reg. \$42
\$31.99

amber floral

Far Away Moroccan Nights Eau de Parfum
50 ml 612-655
reg. \$42
\$31.99

Top: Violet Leaf, Powdery
Orris, Heliotrope
Mid: Blooming Moroccan
Mimosa, White Tonka,
Cardamom, Orange Flower
Base: Creamy Cashmere
Woods, Musk, Sandalwood

The Allure Of Moroccan Nights



amber floral

Rare Gold Eau de Parfum
Mandarin zest, ylang-ylang
and amber. 50 ml 933-115
reg. \$45
\$34.99



soft floral

Rare Pearls Eau de Parfum
Magnolia, white pepper and rosewood.
50 ml 761-615
reg. \$45
\$34.99



fruity floral

Rare Amethyst Eau de Parfum
Plum, violet and sandalwood.
50 ml 933-062
reg. \$45
\$34.99



woody floral

Imari Amor Eau de Parfum
Black currant, orris and musk.
50 ml 762-573
reg. \$42
\$31.99



amber floral

Imari Seduction Eau de Toilette
Wild berries, purple orchid and patchouli.
50 ml 452-897
reg. \$42
\$31.99



amber floral

Imari Eau de Toilette
Bergamot, jasmine
and amber. 50 ml 871-496
reg. \$42
\$31.99

layering essentials

**Far Away
Body Scrub
& Wash**
200 ml
143-360
reg. \$21
**NOW
\$11.49**



**Far Away
Hair and
Body Mist**
96 ml
572-536
reg. \$26
NOW \$15.49



**Far Away
Body Lotion**
200 ml
082-881
reg. \$20
NOW \$9.99



**Haiku
Hair and Body Mist**
96 ml 572-574
reg. \$26
NOW \$15.49



**Haiku
Hand Cream**
75 ml 364-808
reg. \$13
NOW \$7.49



**Rare Pearls
Hand Cream**
75 ml
364-827
reg. \$13
NOW \$7.49



**Far Away
Hand Cream**
75 ml
364-850
reg. \$13
NOW \$7.49



Haiku Body Lotion
200 ml 447-820
reg. \$20
NOW \$11.99

**Rare Pearls
Body Lotion**
200 ml
082-915
reg. \$20
NOW \$11.99



**Rare Pearls
Hair and Body
Mist**
96 ml
572-851
reg. \$26
NOW \$15.49



**Haiku
Body Scrub
& Wash**
200 ml
143-208
reg. \$21
**NOW
\$11.49**





soft floral

Soft Musk
Avon Classics Collection
Eau de Cologne Spray
Peach blossom, blonde woods
and sheer musk. 50 ml **787-790**
reg. \$28
\$22.99



soft floral

Dreamlife
Avon Classics Collection
Eau de Cologne Spray
Mimosa flower, rose and amber.
50 ml **236-227**
reg. \$28
\$22.99



woody floral

Night Magic
Avon Classics Collection
Eau de Cologne Spray
Neroli, jasmine and musk.
50 ml **439-495**
reg. \$28
\$22.99

scented softness

Perfumed Skin Softener
Moisturizing formula leaves skin feeling soft
and scented. 150 ml
reg. \$10
\$6.99 each

Avon Classics Candid 739-160
Avon Classics Odyssey 739-762
Imari 738-751
Haiku 738-694

Avon Classics Timeless 739-155
Avon Classics Sweet Honesty 740-246
Avon Classics Night Magic 738-766
Far Away 049-246



amber floral

Candid
Avon Classics Collection
Eau de Cologne Spray
Bergamot, tuberose and
patchouli. 50 ml **038-295**
reg. \$28
\$22.99



soft floral

Odyssey
Avon Classics Collection
Eau de Cologne Spray
Tuberose, ylang-ylang and
oakmoss. 50 ml **900-391**
reg. \$28
\$22.99



soft floral

Sweet Honesty
Avon Classics Collection
Eau de Cologne Spray
Lily of the valley, soft rose and
cedarwood. 50 ml **901-861**
reg. \$28
\$22.99



soft floral

Timeless
Avon Classics Collection
Eau de Cologne Spray
Cardamom, jasmine and
patchouli. 50 ml **037-930**
reg. \$28
\$22.99



soft floral

Topaze
Avon Classics Collection
Eau de Cologne Spray
Jasmine, rose and sheer musk.
50 ml **735-217**
reg. \$28
\$22.99



fresh green floral

Free O₂
Eau de Toilette
White peach tea, honeysuckle
and musk. 50 ml **490-840**
reg. \$28
\$22.99

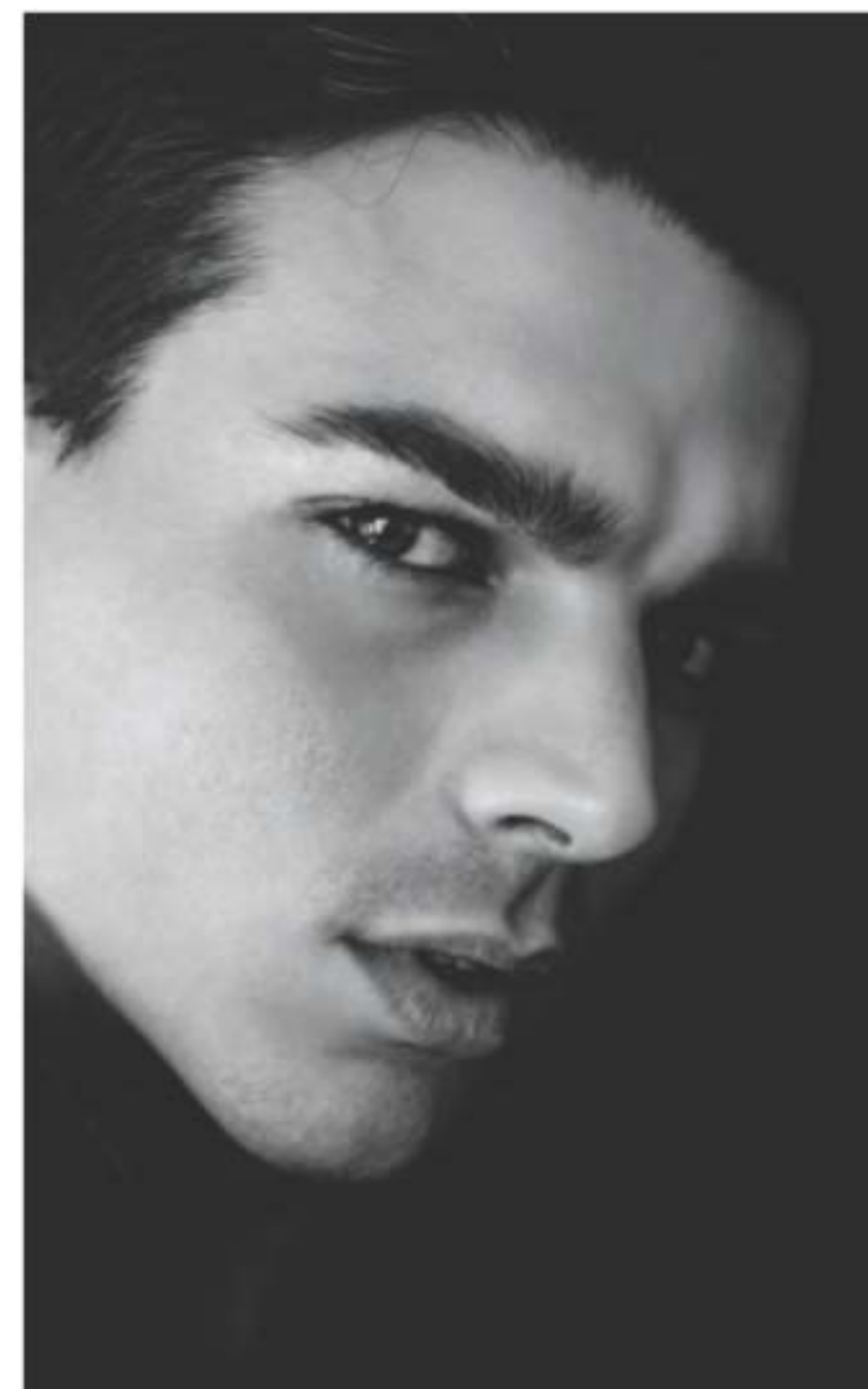


let your senses be your guide



fresh aromatic
Perceive Cologne
100 ml 888-062
reg. \$45
\$34.99

Top: Mandarin, Grapefruit, Sparkling Citrus
Mid: Geranium, Earthy Sage, Lavender
Base: Calming Cedarwood, Patchouli, Amber



captivate at a
single glance



woody fougère
Mesmerize Black Eau de Toilette
Pepper, nutmeg and tonka bean.
100 ml 305-667
reg. \$45
\$34.99



fresh aromatic
Mesmerize Cologne
Bergamot, cardamom and amber.
100 ml 871-458
reg. \$45
\$34.99



**Wild Country
Hair and Body Wash**
150 ml 215-188
reg. \$13
\$9.99



**Wild Country
Aftershave Splash**
118 ml 366-432
reg. \$23
\$18.49

fresh aromatic

**Wild Country
Cologne**

Lavender, coriander seed and
sandalwood. 88 ml 086-466
reg. \$35

\$27.99

Packaging may vary.



cause a stir

woody fougère

**Black Suede
The Blend
Eau de Toilette**
Aged rum-soaked
casks, smoky
leather and spicy
woods. 100 ml

433-865

reg. \$42

\$31.99



fresh aromatic

Black Suede Eau de Toilette
Bergamot, leather and oakmoss.
100 ml 908-703
reg. \$35
\$27.99



**Black Suede
Hair and Body Wash**
150 ml 230-200
reg. \$13
\$9.99

yay, chambray!

Flirty and flouncy, light and bright, denim blues and pops of metallic hues... put a stylish spin on summery must-dos.



NEW

❖ Chambray Dress

Denim blue lightweight chambray dress with V-neckline and short sleeves. Button front, ruffle hem and self-tie fabric belt at waist. 100% lyocell. Centre back length: 93 cm on M; 95 cm on 1X. Machine wash, line dry, remove belt before washing.

XS(0-2) 042-002

S(4-6) 042-055

M(8-10) 042-060

L(12-14) 042-074

XL(16) 042-347

1X(18W-20W) 042-351

2X(22W-24W) 042-370

3X(26W-28W) 042-969

reg. \$84.99

\$66.99



ROUND
NECKLINE
and rolled
sleeve detail

Color Cascade
Layered Collection
sold on page 148.

NEW

❖ Relaxed Rolled Sleeve Top

Black relaxed-fit top with round neckline and short rolled sleeves that are fixed. Mixed material features textured front with soft knit back. Front panel: polyester/spandex. Back panel and trim: polyester/rayon/spandex. Centre back length: 57 cm on M; 62 cm on 1X. Machine wash and dry.

reg. \$69.99

\$54.99

XS(0-2) 043-066

S(4-6) 043-070

M(8-10) 043-119

L(12-14) 044-631

XL(16) 044-904

1X(18W-20W) 045-054

2X(22W-24W) 046-099

3X(26W-28W) 046-448

pretty, pleats

ALL NEW

❖ 2-Pack V-Neck Tees

Fuchsia and light green tees with V-neckline and short sleeves. 100% cotton. Centre back length: 60 cm on M; 64 cm on 1X. Machine wash and dry.

XS(0-2) 046-820

S(4-6) 046-840

M(8-10) 046-873

L(12-14) 046-907

XL(16) 046-926

1X(18W-20W) 046-945

2X(22W-24W) 046-950

3X(26W-28W) 046-964

reg. \$69.99

\$54.99 the pack

❖ Striped Wide-Leg Crop Pant

Black and multicolour stripe pleated crop pant. Wide-leg fit and elastic waistband for easy pull-on styling. 100% polyester. Inseam: 58 cm on all sizes. Machine wash, line dry.

XS(0-2) 046-510

S(4-6) 046-539

M(8-10) 046-543

L(12-14) 046-558

XL(16) 046-562

1X(18W-20W) 046-581

2X(22W-24W) 046-596

3X(26W-28W) 046-816

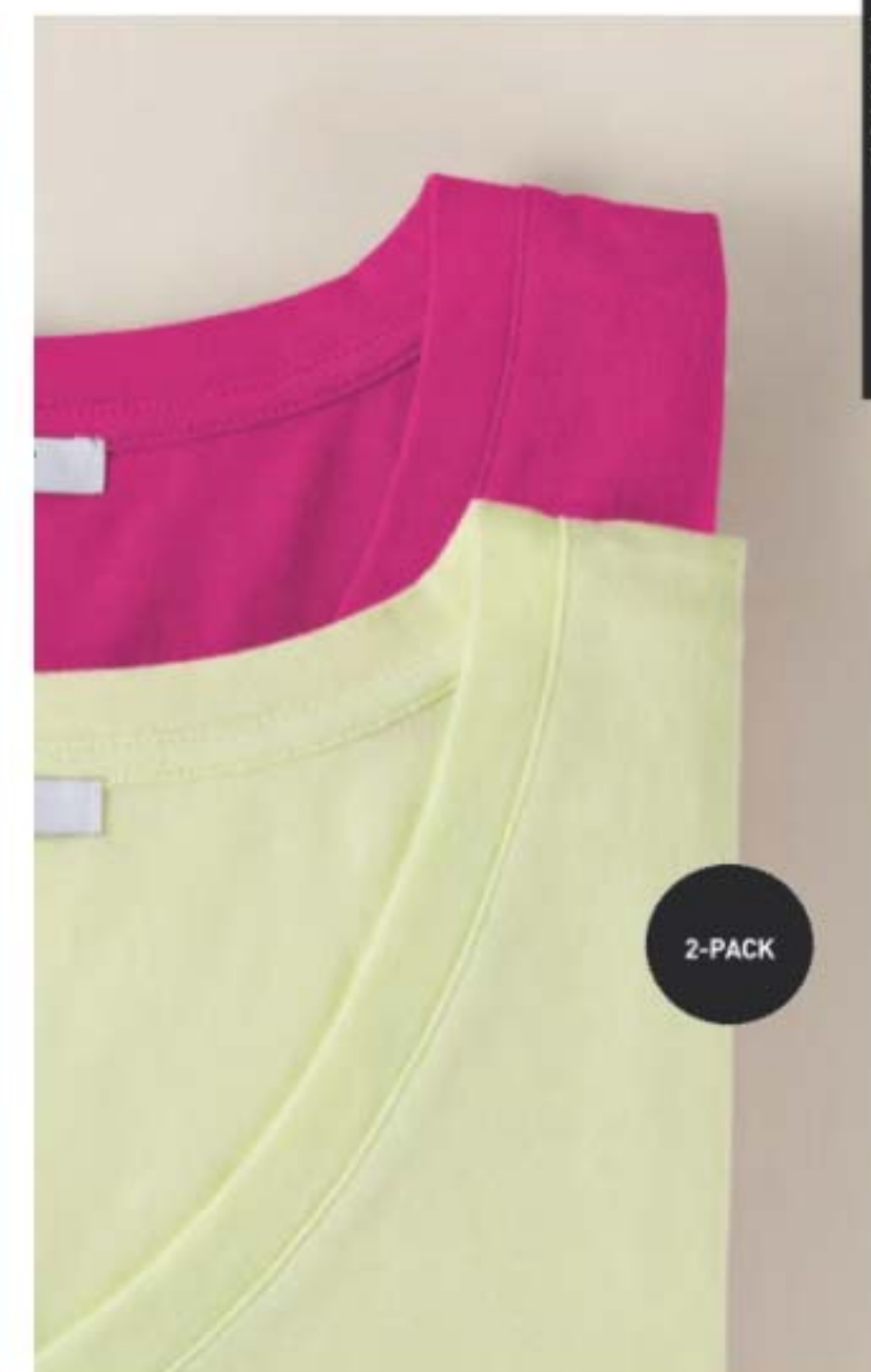
reg. \$69.99

\$54.99

Low Heel Mule sold on page 131.

V-NECKLINE
and short
sleeve tee

PLEATED
wide-leg
crop pant



Luxe Eyeglass Chain
sold on page 146.

metallics in the mix

❖ Metallic Stripe Wrap Dress

White surplice dress with golden metallic stripes. Sleeveless, self-tie belt at waist and back zipper closure. Bottom is lined. Body and lining: polyester. Centre back length: 123 cm on M; 126 cm on 1X. Machine wash, line dry (remove self-tie belt before washing).

XS(0-2) 906-586

S(4-6) 906-590

M(8-10) 906-830

L(12-14) 906-954

XL(16) 906-973

1X(18W-20W) 907-104

2X(22W-24W) 907-157

3X(26W-28W) 907-248

reg. \$80.99

\$63.99

SURPLICE
faux
wrap
styling



ALL NEW

❖ Metallic Phone Case

Distressed golden metallic phone case with adjustable crossbody strap and zipper closure. Includes outside and inside slotted pocket. 11 cm L x 5 cm W x 18 cm H. Strap: 69 cm L fully extended. Man-made materials. 046-983 reg. \$48.99

\$36.99

Beaded Bloom Bag Charm

Semi-precious stones with glass and pearlesque beads. 11 cm L.

Happy/Lapis 103-801

Love/Purple Amethyst 103-854

Luck/Green Aventurine 103-835

reg. \$18.99

\$14.99 each

❖ Low Heel Mule

Black open-toe sandal with golden metallic block heel, 5 cm H. Man-made materials.

6 102-968 7 103-031 8 103-050

9 103-065 10 103-084 11 103-099

reg. \$74.99

\$59.99



**SHEER
OVERLAY
TOP**
with lining and
three quarter
length sleeves

❖ **Floral
Lightweight Top**
Sheer floral print
overlay top with lining
and flowy ¾ length
sleeves. Body and
lining: polyester.
Centre back length:
66 cm on M; 71 cm on
1X. Machine wash,
line dry.
XS(0-2) **907-377**
S(4-6) **907-453**
M(8-10) **907-468**
L(12-14) **907-487**
XL(16) **907-544**
1X(18W-20W) **907-582**
2X(22W-24W) **907-597**
3X(26W-28W) **907-601**
reg. \$66.99
\$51.99

**PULL-ON
PANT**
with smocked
waist and
straight leg fit

floaty florals

❖ **Linen Pull-On Pant**
Khaki green linen
blend pant with
smocked waist.
Side seam pockets
and straight leg fit.
Polyester/rayon/linen.
Inseam: 74 cm all
sizes. Machine wash,
line dry.
XS(0-2) **907-640**
S(4-6) **907-688**
M(8-10) **907-692**
L(12-14) **908-024**
XL(16) **908-149**
1X(18W-20W) **908-851**
2X(22W-24W) **908-866**
3X(26W-28W) **908-870**
reg. \$74.99
\$59.99



❖ **2-Pack Rib Knit Tanks**
Khaki green and beige
ribbed tanks with scoop
neck. Cotton/spandex.
Centre back length:
55 cm on M; 60 cm on 1X.
Machine wash and dry.
XS(0-2) **909-437**
S(4-6) **909-441**
M(8-10) **909-790**
L(12-14) **910-054**
XL(16) **910-422**
1X(18W-20W) **910-437**
2X(22W-24W) **910-441**
3X(26W-28W) **910-480**
reg. \$48.99
\$36.99 the pack

❖ **Knit Pullover**
Beige lightweight
pullover with V-neck
and side slits. Versatile
layering piece can be
worn over a swimsuit
or tank. Polyester/
spandex. Centre back
length: 66 cm on M/L;
69 cm on XL/1X.
Machine wash and dry.
XS/S **911-008**
M/L **911-103**
XL/1X **911-122**
2X/3X **911-180**
reg. \$74.99
\$59.99



Moonlight Waves Collection sold
on page 154.

Pullover is shown paired with
the beige tank from the
2-Pack Rib Knit Tanks.



oh-so flamingo

❖ Flamingo PJ Set

2-piece striped pajama set with pink flamingo print. Top with V-neck and short sleeves. Pull-on cropped bottoms with elastic waist. Polyester/spandex. Centre back length: 60 cm on M; 65 cm on 1X. Inseam: 55 cm all sizes. Machine wash and dry.

XS(0-2) **916-469**

S(4-6) **918-658**

M(8-10) **918-662**

L(12-14) **918-696**

XL(16) **918-901**

1X(18W-20W) **918-954**

2X(22W-24W) **919-582**

3X(26W-28W) **920-472**

reg. \$69.99

\$54.99 the set



❖ Flamingo Slippers

Soft knit ivory slippers with embroidered flamingo motif. Striped insole and rubber outsole. Man-made materials.

S(5-6) **915-917** L(9-10) **916-249**

M(7-8) **915-936** XL(11-12) **916-454**

reg. \$33.99

\$24.99

APPAREL SIZE CHART (IN CM)

SIZE	BUST	WAIST	HIP
XS 0/2	77 - 81	60 - 64	83 - 86
S 4/6	85 - 89	67 - 71	90 - 94
M 8/10	93 - 97	75 - 79	98 - 102
L 12/14	100 - 104	83 - 86	105 - 109
XL 16	109 - 112	90 - 93	113 - 116
1X 18W/20W	118 - 123	99 - 104	122 - 127
2X 22W/24W	128 - 133	109 - 114	132 - 137
3X 26W/28W	138 - 144	119 - 124	142 - 147



2-DRESS PACK

teal appeal

❖ 2-Pack Dresses

Two classic T-shirt dresses in turquoise and turquoise/white stripe. Round neckline and short sleeves. Solid colour dress: polyester/ rayon/ spandex. Striped dress: polyester/cotton/spandex. Centre back length: 94 cm on M; 99 cm on 1X. Machine wash, line dry.

XS(0-2) **884-803**

S(4-6) **884-822**

M(8-10) **884-841**

L(12-14) **885-192**

XL(16) **885-298**

1X(18W-20W) **885-374**

2X(22W-24W) **885-389**

3X(26W-28W) **885-431**

reg. \$74.99

\$59.99 the pack

Lace-Up Sneaker sold
on page 136.



ready, set,
summer

❖ **Summer Rib 2-Piece Set**

Coral ribbed two-piece set. Top features elastic scoop neck that can be worn off the shoulder, elastic at bottom of sleeves and hem, centre back length: 48 cm on M; 53 cm on 1X. Pull-on wide leg pant has an elastic waistband, inseam: 74 cm on all sizes. Polyester/spandex. Machine wash and dry.

XS(0-2) 883-242
S(4-6) 883-280
M(8-10) 883-295
L(12-14) 883-329
XL(16) 883-371
1X(18W-20W) 883-405
2X(22W-24W) 883-568
3X(26W-28W) 883-572
reg. \$84.99

\$66.99 the set

ELASTIC
SCOOP NECK
can be worn
on or off the
shoulder

2-PIECE
SET

LEATHERLIKE
SNEAKER
with perforated
floral design



❖ **Lace-Up Sneaker**
White leatherlike lace-up sneaker with perforated floral design. Cushioned insole. Rubber outsole. Man-made materials.

6 883-644 9 883-955
7 883-659 10 883-960
8 883-850 11 884-067
reg. \$69.99

\$54.99

PULL ON
wide leg
pant

❖ **Lace-Front Sleeveless Top**

White lace-front top with jersey knit trim and back panel. Front placket with functional buttons and a sleeveless silhouette with front lining. Lace body: cotton/polyester. Back panel/trim: polyester/rayon/spandex. Lining: 100% polyester. Centre back length: 66 cm on M; 69 cm on 1X. Machine wash, line dry.

XS(0-2) 887-669
S(4-6) 887-673
M(8-10) 887-688
L(12-14) 887-802
XL(16) 887-817
1X(18W-20W) 887-931
2X(22W-24W) 887-946
3X(26W-28W) 887-984
reg. \$66.99

\$51.99



❖ **Two-Tone Stripe Shirt**

Blue/white stripe linen-blend shirt with button detail on front placket and on cuffed short sleeves. Cotton/linen. Centre back length: 64 cm on M; 67 cm on 1X. Machine wash, line dry.

XS(0-2) 886-199
S(4-6) 886-218
M(8-10) 886-241
L(12-14) 886-260
XL(16) 886-309
1X(18W-20W) 886-351
2X(22W-24W) 886-457
3X(26W-28W) 886-476
reg. \$69.99

\$54.99

❖ **Ruffle Bottom Skirt**

Blue lightweight skirt features ruffle hem and self-tie belt at waist. Back zip. Lined: 100% polyester. Body: rayon/polyester. Centre back length: 75 cm on M; 76 cm on 1X. Machine wash, line dry.

XS(0-2) 886-480
S(4-6) 886-533
M(8-10) 886-897
L(12-14) 886-901
XL(16) 887-449
1X(18W-20W) 887-597
2X(22W-24W) 887-601
3X(26W-28W) 887-654
reg. \$66.99

\$51.99



A. ♦ Chunky EVA Slide

Ivory lightweight EVA slide with molded ribbed upper. Can be worn indoors or outdoors. Half sizes order size down. Man-made materials.

S(5-6) 606-869 L(9-10) 606-983
M(7-8) 606-979 XL(11) 606-998
reg. \$29.99
\$21.99

B. ♦ Ribbed Lounge Set

Grey ribbed two-piece set with contrasting ivory scallop detail on trim. Top features round neckline and short sleeves. Pants feature side seam pockets and elastic waist with drawstring. Polyester/spandex.

XS(0-2) 607-004 XL(16) 607-171
S(4-6) 607-019 1X(18W-20W) 607-296
M(8-10) 607-095 2X(22W-24W) 608-254
L(12-14) 607-129 3X(26W-28W) 608-288
reg. \$74.99

\$59.99 the set

C. ♦ Relaxed V-Neck Pullover

Fuchsia V-neck top with rolled sleeves and a relaxed fit. Polyester.

XS(0-2) 608-967 XL(16) 609-045
S(4-6) 609-007 1X(18W-20W) 609-079
M(8-10) 609-011 2X(22W-24W) 609-098
L(12-14) 609-030 3X(26W-28W) 609-117
reg. \$69.99

\$54.99

D. ♦ Spring Floral Dress

Light green chiffon dress with fuchsia floral print. V-neckline, flutter sleeves, ruffle hem and self-tie fabric belt at waist. Back zipper closure. Body and lining: polyester.

XS(0-2) 610-189 XL(16) 610-246
S(4-6) 610-208 1X(18W-20W) 610-270
M(8-10) 610-212 2X(22W-24W) 610-318
L(12-14) 610-231 3X(26W-28W) 610-360
reg. \$84.99

\$66.99

E. ♦ Eyelet Top

Navy eyelet top. Round neckline with front tie and short puff sleeves. Polyester/spandex.

XS(0-2) 610-079 XL(16) 610-117
S(4-6) 610-083 1X(18W-20W) 610-121
M(8-10) 610-098 2X(22W-24W) 610-136
L(12-14) 610-102 3X(26W-28W) 610-155
reg. \$63.99

\$48.99

F. ♦ Chambray Pants

Blue denim coloured lightweight chambray pants. Front pockets, a flat front with back elastic waistband and pull-on styling. Cotton/polyester.

XS(0-2) 609-140 XL(16) 609-246
S(4-6) 609-155 1X(18W-20W) 609-250
M(8-10) 609-193 2X(22W-24W) 609-265
L(12-14) 609-227 3X(26W-28W) 609-270
reg. \$74.99

\$59.99

**G. ♦ Crochet Trim Top**

Marigold gauze top with crochet trim at neckline and short flutter sleeves. Body: rayon/polyester. Lace trim: polyester.

XS(0-2) 617-403 XL(16) 618-505
S(4-6) 617-532 1X(18W-20W) 618-581
M(8-10) 617-805 2X(22W-24W) 618-600
L(12-14) 617-915 3X(26W-28W) 619-114
reg. \$59.99

\$44.99

H. ♦ Puff Sleeve Dress

Red linen puff-sleeve shift dress with contrast stitching at neckline. Linen/rayon.

XS(0-2) 612-765 XL(16) 613-431
S(4-6) 612-909 1X(18W-20W) 613-522
M(8-10) 613-025 2X(22W-24W) 613-685
L(12-14) 613-059 3X(26W-28W) 614-280
reg. \$84.99

\$66.99

I. ♦ Tassel-Front Blouse

Ivory blouse with blue embroidery print. Tie front with tassels and long sleeves with button cuff. Polyester.

XS(0-2) 616-923 XL(16) 617-164
S(4-6) 616-942 1X(18W-20W) 617-221
M(8-10) 617-092 2X(22W-24W) 617-260
L(12-14) 617-150 3X(26W-28W) 617-293
reg. \$66.99

\$51.99

J. ♦ Metallic Espadrille

Natural and golden woven espadrille with jute rope midsole, knit fabric toe cap and rubber outsole. Back pull-tab for easy on/off. Man-made materials.

6 619-588 8 619-679 10 620-023
7 619-664 9 619-980 11 620-038
reg. \$66.99

\$51.99

K. ♦ Embroidered Tunic

Black V-neck tunic with blue floral embroidery at neckline and placket. Decorative buttons on placket and bell sleeves. Rayon (excluding embroidery).

XS(0-2) 614-662 XL(16) 615-673
S(4-6) 614-720 1X(18W-20W) 615-783
M(8-10) 614-734 2X(22W-24W) 616-115
L(12-14) 614-973 3X(26W-28W) 616-450
reg. \$74.99

\$59.99



tops to toes

A. ♦ Stacked Avon T-shirt
Black. Crew neck with short sleeves and black graphic. Cotton. Centre back length: 74 cm on L. Machine wash and dry.
S 636-215 XXL 636-287
M 636-220 XXXL 636-291
L 636-234 XXXXL 636-306
XL 636-272
reg. \$42.99

\$32.99

B. ♦ Avon 1886 Cap
Off-white unisex cap with gold metallic embroidered logo, adjustable tuck-in strap and metal buckle. Cotton. One size fits most. Hand wash and hang dry. 639-855
reg. \$36.99

\$29.99

C. ♦ Avon Calling Long Sleeve T-Shirt
Grey unisex tee with pink metallic and cream graphic, crew neck and long sleeves. Cotton. Centre back length: 74 cm on L. Machine wash and dry.
S 636-310 XXL 636-378
M 636-344 XXXL 636-416
L 636-359 XXXXL 636-473
XL 636-363
reg. \$48.99

\$36.99

D. Avon Far Away Bali Pin
Pearlesque cap, purple enamel and tassel with goldtone. 3 cm L. 011-100
reg. \$14.99

\$11.99

E. ♦ Split Avon Hoodie
Pink unisex pullover with kangaroo pocket and logo graphic. Cotton/polyester. Centre back length: 70 cm on L. Machine wash and dry.
S 636-507 XXL 636-640
M 636-511 XXXL 636-655
L 636-621 XXXXL 636-689
XL 636-636
reg. \$69.99

\$54.99

F. Avon Beyond Glow Pin
White enamel cap and label with silvertone. 3 cm L. 011-114
reg. \$14.99

\$11.99

G. Avon Skin So Soft Pin
Green enamel and silvertone. 3 cm L. 011-243
reg. \$14.99

\$11.99



ALL NEW

H. ♦ Avon Feelin' Fresh Hoodie
Ivory unisex pullover with kangaroo pocket and blue/green logo print. Cotton/polyester. Centre back length: 70 cm on L. Machine wash and dry.
S 057-714 XXL 059-698
M 057-934 XXXL 060-224
L 058-888 XXXXL 060-300
XL 059-406
reg. \$74.99

\$59.99

♦ T-Shirts
Crew neck tees. Cotton. Centre back length: 74 cm on L. Machine wash and dry.

I. Ring My Bell Long-Sleeve
Black unisex with long sleeves and coloured logo foil graphic.
S 060-520 XXL 060-717
M 060-554 XXXL 060-721
L 060-569 XXXXL 060-736
XL 060-588
reg. \$48.99

\$36.99

J. Avon Archive Mist
Pink unisex with short sleeves and vintage print graphic.
S 060-740 XXL 060-793
M 060-755 XXXL 060-812
L 060-774 XXXXL 060-827
XL 060-789
reg. \$42.99

\$32.99

K. Avon Archive Nail
Ivory unisex with short sleeves and vintage print graphic.
S 060-831 XXL 060-918
M 060-850 XXXL 060-937
L 060-865 XXXXL 060-941
XL 060-870
reg. \$42.99

\$32.99

L. Sweet Honesty Short Sleeve
Pink with short sleeves and green logo graphic.
S 060-315 XXL 060-478
M 060-320 XXXL 060-497
L 060-334 XXXXL 060-501
XL 060-444
reg. \$42.99

\$32.99

M. Avon Button Notebook
Spiral-bound with button-pin print graphics. 100 lined pages and '24-'26 calendar. Man-made materials. 13 cm W x 18 cm L. 060-516
reg. \$30.99

\$23.99



Layered Necklace

Two-row necklace,
42 cm L with
9 cm extender.

061-068

reg. \$36.99

\$29.99**Bracelet Set**

2-piece bracelet set.
Stretches to fit most.

061-072

reg. \$24.99

\$18.99 the set**Stretch Ring**

With reconstituted
blue stone, 3 cm W.
Stretches to fit most.

061-110

reg. \$18.99

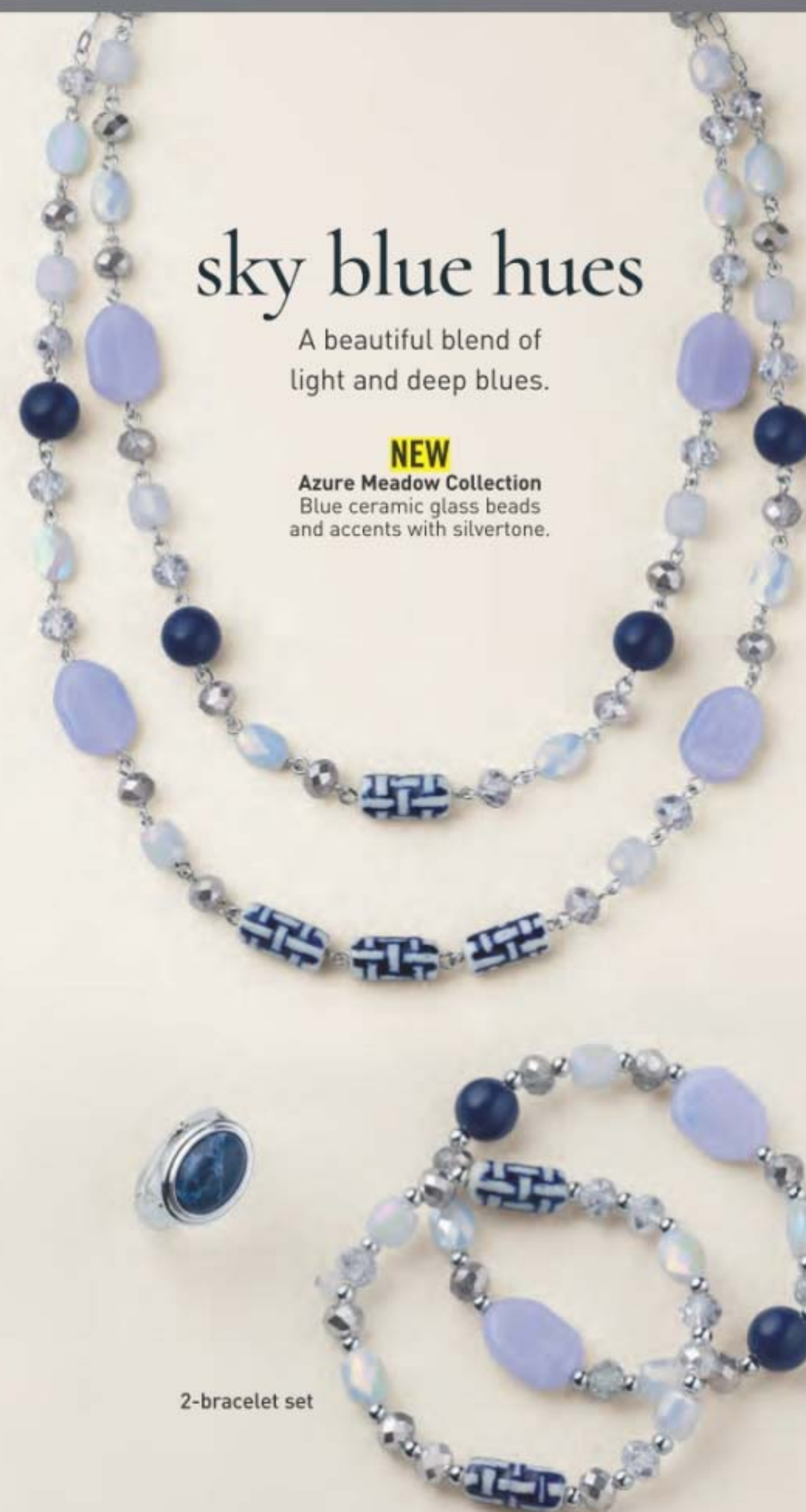
\$14.99

sky blue hues

A beautiful blend of
light and deep blues.

NEW

Azure Meadow Collection
Blue ceramic glass beads
and accents with silvertone.



2-bracelet set

NEW**Pendant Necklace**

Goldtone chain with coloured glass pendant. Chain, 61 cm L with 9 cm extender. Pendants range from 4 to 5 cm L.

Blue Horizon/Light Blue

061-326

Midnight Leaf/Black

061-144

Violet Dewdrop/Violet

061-182

Dusk Frame/Gray-Blue

061-130

reg. \$24.99

\$18.99 each

singular statements

Captivating pendants with the look of natural stone.



ahead of the curve

Intricate textures take classic hoops to the next level.

**ALL NEW****Woven Glow Hoop Earrings**

Intricate cutout texture, 3 cm L.

Goldtone 062-193

Silvertone 061-819

Dotted Grace Hoop Earrings

Beaded texture, 4 cm L.

Goldtone 061-622

Silvertone 061-364

Modern Curve Hoop Earrings

Ribbed wire look, 5 cm L.

Goldtone 061-350

Silvertone 061-345

reg. \$18.99

\$14.99 each pair

NEW

Luxe Eyeglass Chain

Goldtone eyeglass chain with coloured beads and pearlesque accents. Loops slide onto temple pieces. 80 cm L.

Mist 062-796

Pastel 062-739

Pearly 062-762

reg. \$18.99

\$14.99 each



chic companions

Pretty pairings for your favourite eyewear.

everyday elegance

Timeless pieces exuding delicate pearly charm.



necklace, earring and bracelet set

Pearly Wrap Adjustable Pull-Cord Watch
Pearlesque bracelet watch with goldtone case, 27 mm diam. Pull-cord fits most. Water-resistant to 3 ATM. 062-447
reg. \$69.99
\$54.99

ALL NEW Pure Grace Pearly 3-Piece Set
Goldtone with the look of pearls. Necklace, 42 cm L with 9 cm extender. Pierced drops, 4 cm L. Pull-cord bracelet fits most. 062-561
reg. \$33.99
\$24.99 the set

bright outlook

Candy colours and luxe layers
are all in the mix.



NEW

**Color Cascade
Layered Collection**
Three-row goldtone
chain with multicoloured
beads, a paperclip chain
and a blue pendant.

**Necklace and
Earring Set**
Chain, 42 cm L with
9 cm extender.
Pierced earrings,
1 cm L.
062-853
reg. \$36.99
\$29.99 the set

Bracelet
18 cm L with
3 cm extender.
062-868
reg. \$24.99
\$18.99

necklace and
earring set

3-bracelet set

Cuff Bracelet Set
3-piece bracelet set.
Open cuff fits most.
062-834
reg. \$35.99
\$26.99 the set

colourful coating

Playful, modern and dotted with sparkle.



NEW
**Sleek Enamel CZ
Collection**
Coloured enamel
with accent cz's.

Hoop Earrings
4 cm diam. Pierced.
Red/Goldtone **062-800**
Mint/Silvertone **062-820**
White/Goldtone **062-815**
reg. \$24.99
\$18.99 each pair

**Abalone Gemscape
Statement Collection**
Mix of abalone,
mother-of-pearl and
gem-like stones set
in antique-looking
goldtone.

Necklace
42 cm L with 9 cm
extender. **907-305**
reg. \$48.99
\$36.99

Earrings
5 cm L. Pierced.
907-362
reg. \$24.99
\$18.99

Bracelet
18 cm L with 3 cm
extender. **907-310**
reg. \$24.99
\$18.99

earthy &
enigmatic

Neutral tones with
a touch of iridescence.

delicate blooms

Pretty petals blooming
with pearly perfection.

**Blossom Breeze
Collection**
The look of
mother-of-pearl
set in goldtone.

Necklace
Glass pearlesque,
blush and champagne
beads. 71 cm L with
9 cm extender.
922-346
reg. \$36.99
\$29.99

**Interchangeable
Earrings**
2-in-1. Rattan hoops
with removable flower.
4 cm L. Pierced.
922-365
reg. \$24.99
\$18.99

Bracelet
With cz.
Fits most.
922-350
reg. \$24.99
\$18.99

Keepsake Birthstone Locket

Goldtone with birthstone coloured accent stone. Chain, 42 cm L with 9 cm extender. Locket, 2 cm diam. reg. \$24.99

\$18.99 each

		
January 911-209	February 911-213	March 911-490
		
April 911-778	May 912-152	June 913-379
		
July 913-766	August 913-770	September 913-804
		
October 914-270	November 914-284	December 914-318

**American Heartland Collection**

Red and blue accent stones set in silvertone with hammered texture.

Hoop Earrings

4 cm L. Pierced.

883-625

reg. \$18.99

\$14.99

Drop Earrings

5 cm L. Pierced.

883-630

reg. \$18.99

\$14.99

**Ancient Allure Metal Collection**

Silvertone with hammered texture.

Hoop Earrings

3 cm L. Pierced.

883-610

reg. \$14.99

\$11.99

Medallion Necklace

Chain, 66 cm L with 9 cm extender.

Pendant, 4 cm L.

883-587

reg. \$33.99

\$24.99

Cherished Moments Collection

Charms with sparkling accents, faceted beads and metal accents.

Bracelet Set

2-piece sets.

Stretches to fit most.

Star/Green/Goldtone 915-109

Feather/Purple/Silvertone 915-223

Evil Eye/White/Silvertone 915-371

reg. \$24.99

\$18.99 each set



2-bracelet sets

Necklace

42 cm L with 9 cm extender.

Luck/Green/Goldtone 914-834

Family/Purple/Silvertone 914-490

Love/Pink/Goldtone 914-519

reg. \$29.99

\$21.99 each

Western Sunburst Collection

Textured antique-looking silvertone with turquoise coloured accent stones.

Necklace and Earring Set

Necklace, 42 cm L with 9 cm extender. Pierced drops,

5 cm L. 915-826

reg. \$33.99

\$24.99 the set

Stretch Ring

Stretches to fit most.

915-830

reg. \$18.99

\$14.99

necklace and earring set



Moonlight Waves Collection

Semi-precious opals, blue, pearlesque and goldtone beads, plus charm with cz.



3-bracelet set

**Layered Necklace**

3-layer necklace. Shortest layer, 41 cm L; longest layer, 52 cm with 9 cm extender. **909-202** reg. \$36.99 **\$29.99**

Bracelet Set

3-bracelet set. Stretches to fit most. **909-260** reg. \$29.99 **\$21.99 the set**

Soft Sands Beaded Collection

Semi-precious quartz stones, neutral-toned beads and goldtone accents.

**Necklace**

71 cm L with 9 cm extender. **885-518** reg. \$36.99 **\$29.99**

Bracelet

Stretches to fit most. **885-719** reg. \$18.99 **\$14.99**

Seaside Collection
Starfish or shell motifs.**Starfish Watch**

Leatherlike strap, 23 cm L. Goldtone case, 36 mm diam. Water-resistant to 3 ATM.

Green **908-938**

Blush **909-054**

reg. \$59.99

\$44.99 each

Charm Beaded Bracelets

2-bracelet sets. Stretches to fit most.

Teal/Silvertone **909-111**

Blush/Goldtone **909-126** reg. \$24.99

\$18.99 each set



2-bracelet sets

**Starfish Charm Drop Earrings**

Goldtone with mother-of-pearl accent, 6 cm L. Pierced. **909-183** reg. \$24.99

\$18.99



Sunlight Glow Collection
Blush pink and black glass beads with goldtone charm and accents.

Pendant Necklace
42 cm L with 9 cm extender.
772-509
reg. \$24.99

\$18.99

Stretch Bracelet
Stretches to fit most.
772-513
reg. \$18.99

\$14.99



Moonlight Glow Collection
Iridescent and black glass beads with silvertone charm and accents.

Pendant Necklace
42 cm L with 9 cm extender. **772-528**
reg. \$24.99

\$18.99

Stretch Bracelet
Stretches to fit most.
772-547
reg. \$18.99

\$14.99

4-pair earring set



can also be worn
as hoops with
removable charm

Mixed Glow Earring Pack
4-pair mixed metal set with sparkling accents. Goldtone hoop/drop earrings feature removable star charm with glass stone. All pairs under 3 cm L. Pierced.
885-446
reg. \$24.99

\$18.99 the set

STAINLESS STEEL

Forever Daisy Stainless Steel Aqua CZ Collection
Aqua coloured centre cz with clear stone accents set in stainless steel.

Bracelet
One size fits most.
.75-carat total weight equivalent. **888-646**
reg. \$74.99

\$59.99

Necklace
43 cm L with 3 cm extender. .75-carat total weight equivalent.
888-517
reg. \$69.99

\$54.99

Ring
1 cm W. .5-carat total weight equivalent.
5 **888-536** 7 **888-593** 9 **888-627**
6 **888-589** 8 **888-608** 10 **888-631**
reg. \$69.99

\$54.99

Earrings
3 cm L. 1-carat total weight equivalent. Pierced.
888-521
reg. \$74.99

\$59.99



Forever in Bloom Crystal Collection
Crystal glass stones set in silvertone.

3-Piece Set
Necklace, 42 cm L with 9 cm extender. Pendant, 5 cm L. Pierced earrings, 3 cm L.

Order by ring size:
6 **887-999**
8 **888-005**
10 **888-043**
reg. \$36.99

\$29.99 the set

Bracelet
18 cm L with 3 cm extender.
888-058
reg. \$14.99

\$11.99

necklace,
earring and
ring set



STERLING SILVER



Sterling Silver Rose of Love CZ Collection
Cz's set in .925 sterling silver.

Necklace
621-493
reg. \$87.99
\$66.99

Ring
5 621-660 8 622-117
6 621-680 9 622-136
7 621-694 10 622-360
reg. \$87.99
\$66.99



Necklace
Three-row necklace.
608-460
reg. \$48.99
\$36.99

Ring
6 608-545
8 608-732
10 608-747
reg. \$18.99
\$14.99

Rose Garden Pearly Collection
Coloured glass stones and pearlesque beads with goldtone.

Necklace and Earring Set
Pierced earrings.
608-474
reg. \$33.99
\$24.99 the set

necklace and earring set

Pearly Bouquet Stretch Watch
Mother-of-pearl case, 34 mm diam. Pearly band stretches to fit most. Water-resistant to 3 ATM.
608-345
reg. \$74.99
\$59.99



STERLING SILVER



Sterling Silver Bow of Affection CZ Collection
Cz's set in .925 sterling silver.

Necklace
622-380
reg. \$74.99
\$59.99

Earrings
Pierced.
622-600
reg. \$66.99
\$51.99



Timeless Grace Collection
Goldtone.

Pull-Cord Bracelet
Clear glass stones. Adjusts to fit most.
610-451
reg. \$24.99
\$18.99

Station Necklace and Earring Set
Clear glass stones. Pierced earrings.
610-428
reg. \$48.99
\$36.99 the set

Hoop Earrings
Pierced.
610-466
reg. \$18.99
\$14.99



necklace and earring set

**Pearly Charm
Initial Necklace**
Goldtone chain
with pearly
pendant.
reg. \$14.99
\$11.99 each



A 609-466 B 609-485 C 609-490 D 609-519 E 609-523



G 609-538 J 609-600 K 609-614 L 609-629 M 609-633 N 609-648



O 609-360 P 609-652 R 609-686 S 609-758 T 609-762 V 609-777

Pawprints of Love Bracelet and Ring Set
Goldtone paperclip chain bracelet with
cutout and ring with pavé crystal stones.
Order by ring size:

Dog Mom	Cat Mom
6 609-815	6 609-781
8 610-030	8 609-796
10 610-064	10 609-800

reg. \$24.99

**\$18.99
each set**



bracelet and
ring sets



**Saharan Sunset
Collection**
Goldtone with
coloured
beads or tassels.

Layered Necklace
Three-layered
necklace
with charms.
616-631
reg. \$33.99
\$24.99

Bracelet Set
Stretches to fit
most.
616-703
reg. \$24.99

\$18.99 the set
Tassel Earrings
With cz accent.
Pierced.
616-684
reg. \$18.99
\$14.99



4-bracelet
set



**Pastel
Treasures
Collection**
Goldtone with
coloured and
clear stone
accents.

Drop Earrings
Pierced.
Rose 610-600
Blue 610-648
reg. \$24.99
**\$18.99
each pair**

**Necklace and
Earring Set**
Pierced earrings.
Rose 610-470
Blue 610-542
reg. \$33.99
**\$24.99
each set**



necklace and
earring sets

**Desert Mirage
Collection**
Goldtone with warm
enamel colours.

Statement Ring
Amber coloured
stone.
6 620-076
8 620-315
10 620-941
reg. \$18.99
\$14.99

Drop Earrings
Pierced. 620-061
reg. \$24.99
\$18.99



**Arabesque Elegance
Collection**
Two-toned scalloped
filigree designs.

Stretch Bracelet
Stretches to fit
most. 614-328
reg. \$29.99
\$21.99



necklace
and
earring set



Necklace and Earring Set
Pierced earrings. 614-313
reg. \$29.99
\$21.99 the set

glisten up

Gem-like clusters
gleam with brilliant lustre.

NEW

Luxe Blue Flora Collection
Floral crystal design with
aquamarine, emerald
and sapphire coloured glass
stones set in silvertone.

Necklace and Earring Set
Chain, 42 cm L with 9 cm
extender. Pendant, 4 cm L.
Pierced earrings, 2 cm L.
063-367
reg. \$29.99

\$21.99 the set

Ring
3 cm W.
6 063-405
8 063-410
10 063-424
reg. \$18.99
\$14.99

necklace and
earring set

❖ SUMMER SENSATIONS 4-PIECE SET \$55.99

WITH ANY \$14 BROCHURE PURCHASE

Summer Sensations Set includes:

• Multi-Use Cooler Bag

Water-resistant nylon tote with a front-zip pocket and top-zip closure, insulated lining, capacity 18 litres, 37 cm L x 41 cm W x 46 cm H. Body: polyester. Lining and handles: man-made materials. Handle drop: 25 cm L. (Not sold separately.)

• Skin So Soft Bug Guard Plus Icaridin Insect Repellent Towelettes

Pack of 8. Resealable bag. Each, 23 cm L x 14 cm W. 10.9 g

• Anew Vitamin C Brightening Serum 30 ml

• Bonus-Size Skin So Soft Radiant Moisture Shower Gel 1 litre

114-088

\$138.99 if purchased separately

Summer Sensations 4-Piece Set purchase does not qualify towards this or any other offer and is available this brochure only.



© 2025 The Avon Company Canada Limited. All rights reserved.

CAMPAIGN 14, 2025

5500 TRANS-CANADA HWY.
POINTE CLAIRE, QUEBEC
H9R 1B6

1-800-265-2866

avon.ca



8 88761 73138 4

Pk of 10 4766131



8 88761 73140 7

Single 4766151

Brochure effective until _____



See our commitment at
avon.ca > Policies > Animal Welfare Policy

RETURN POLICY If you are not satisfied, return any item within 45 days. View Avon's full 45-Day Return Policy at avon.ca > Support > Return Policy.