

# AVON

CAMPAIGN 15



shop. sale.  
splurge.

all makeup  
up to 65% off

**+ FREE GIFT**  
SEE DETAILS INSIDE

*fmg*  
CASHMERE

*fmg*

GLIMMER

*fmg*

GLIMMER

*fmg*

GLIMMER

GO.

by  
GLIMMER

*fmg*  
GLIMMER









Featured shade:  
Persistent.

give 'em 'tude.

## MATTITUDE IS BACK

NEW & IMPROVED TRANSFER-RESISTANT FORMULA

### fmg Glimmer Mattitude Liquid Lipstick

Lock in vivid, saturated colour with a comfortable, non-drying formula that wears all day without fading or feathering. With vitamin E and a blend of olive and sunflower oils to help smooth and soften lips. Glides on effortlessly, delivering full coverage in one swipe with a velvety soft matte finish. Formulated without parabens, sulfates and phthalates. Vegan. 3.5 ml  
reg. \$25

\$19.99



|                   |                       |                      |                     |                       |                    |                      |
|-------------------|-----------------------|----------------------|---------------------|-----------------------|--------------------|----------------------|
|                   |                       |                      |                     |                       |                    |                      |
| Driven<br>419-050 | Relentless<br>418-752 | Tenacious<br>419-232 | Resolute<br>419-228 | Persistent<br>418-771 | Devoted<br>418-896 | Ambitious<br>419-266 |





**fmg Glimmer Matte Lipstick**  
Vivid colour. Velvety feel. Featherlight non-drying formula with pomegranate extract. Buildable medium to full coverage. Formulated without parabens, talc, sulfates and phthalates. 3 g reg. \$22

**NOW \$12.49**

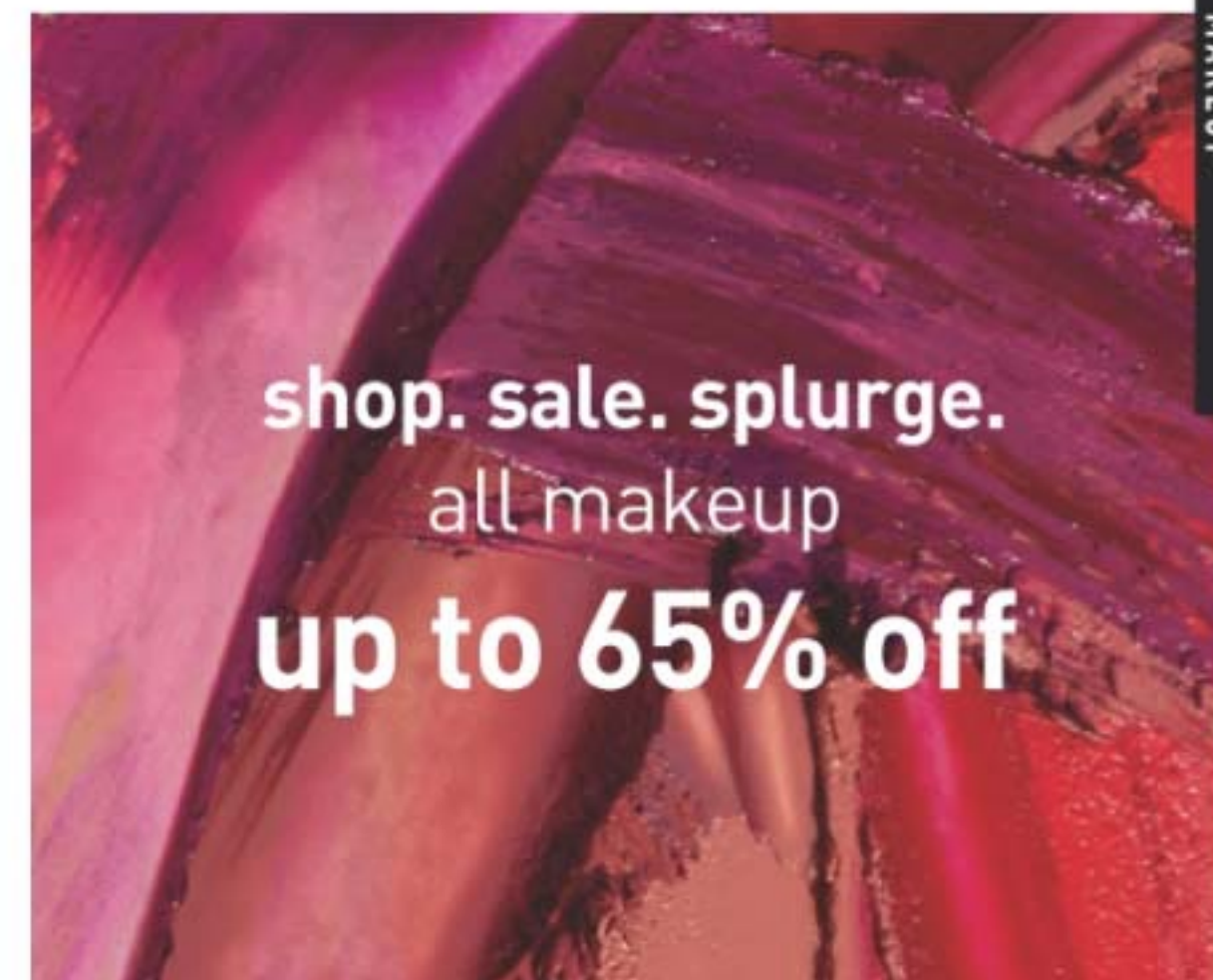


Featured shade: Chili.



**fmg Glimmer Satin Lipstick**  
Lightweight creamy formula with pomegranate extract. Buildable coverage. Satin finish. Formulated without parabens and sulfates. 3 g reg. \$22

**NOW \$12.49**



shop. sale. splurge.  
all makeup  
**up to 65% off**



Featured shade: Blaze.









shop. sale. splurge.  
all makeup  
up to 65% off

### fmg LOVE Lip Butter

Sheer, high-shine formula with cupuaçu seed butter, mango extract, and apricot kernel and olive fruit oils. Buildable coverage. Formulated without parabens, sulfates and phthalates. 2.7 g reg. \$28

**NOW \$15.49**

|   |   |   |   |   |   |
|---|---|---|---|---|---|
|  |  |  |  |  |  |
| Love Affair<br>063-242  | Pucker Up<br>063-128  | Secret Crush<br>063-147   | Tease<br>063-132  | Rendezvous<br>063-166   | Flirtatious<br>063-219  |



### fmg Glimmer Birthday Balm Lip Crayon

Sheer, soft shine formula with non-GMO shea butter. Formulated without parabens and gluten. 2.7 g reg. \$25

**NOW \$13.49**

|   |   |  |   |
|---|---|--|---|
|  |  |  |  |
| Lovin' Life<br>698-867  | PYT<br>375-691  | Cupcake<br>950-000   | Birthday Suit<br>375-706  |
|  |  |  |  |
| Private Party<br>949-990  | Glammed Up<br>953-268   | VIP<br>951-265   | Fine Wine<br>375-725  |
|  |  |  |   |
| Birthday Post<br>375-730  | Surprise!<br>375-710  |  |   |



### fmg Glimmer Lip Conditioner

Leaves dry, cracked lips feeling soft and smooth. With mango seed butter, vitamin E, and jojoba and sunflower seed oils. Formulated without parabens, sulfates, phthalates and talc. 3.5 g **794-578** reg. \$18

**NOW \$10.49**



### fmg GLOKOLOR Lip Serum Pencil

Refreshes and smooths lips. With peppermint and argan oils. Formulated without parabens and fragrance. 1.8 g **787-508** reg. \$29

**NOW \$16.99**



Best of  
K-Beauty






Featured shades: GO. by Glimmer Lacquered Lip Gel in Seeing Red, Currant Crush and Orchid Bloom; Whipped Lip & Cheek Tint in Flora and Blushed.

### GO. by Glimmer Lacquered Lip Gel

Ultimate fusion of shiny gloss and tinted lip colour in one. Non-sticky formula with gel-like texture glides on and helps to leave lips feeling soft and cushioned. Infused with a Super-Fruit Extract Complex that includes noni, passionflower and amla extract. Buildable coverage with a glossy finish. Formulated without parabens, talc, sulfates, phthalates and mineral oil. 4 g reg. \$25

**\$18.99**

#### NEW SHADES









|   |   |   |   |   |
|---|---|---|---|---|
|  |  |  |  |  |
| Soft<br>922-327   | Fruity Floral<br>922-312  | Whisper Pink<br>750-114   | Sunset Rose<br>750-205  | Waffle Cone<br>750-023  |
|   |   |  |  |  |
|   |   | Orchid Bloom<br>750-320   | Seeing Red<br>750-391   | Currant Crush<br>750-478  |

### GO. by Glimmer Whipped Lip & Cheek Tint

Ultimate multitasker delivers beautiful colour for lips and cheeks. With apple fruit extract, an antioxidant known to help support glowing and smooth looking skin. Full pigmented coverage with a velvety matte powder finish. Formulated without parabens, talc, sulfates, phthalates and mineral oil. 4.2 g reg. \$26

**\$19.99**

#### NEW SHADES

|   |   |   |   |   |
|---|---|---|---|---|
|  |  |  |  |  |
| Velvet Vanilla<br>922-293   | Cherry Cocktail<br>922-289  | Frozen Pink<br>749-994  | Peony<br>749-865  | Hibiscus Tea<br>750-019   |
|   |   |  |  |  |
|   |   | Blushed<br>749-870  | Flora<br>749-956  | Jam<br>749-850  |





Featured shade:  
fmg Glimmer  
Be Blushed Cheek Color  
in Tropical Peach.

shop. sale. splurge. all makeup  
up to 65% off

**fmg Glimmer Be Blushed Cheek Color**  
Creamy formula with vitamin E. Buildable coverage. Dewy finish. Formulated without parabens, phthalates and fragrance. 4 g reg. \$25

**NOW \$13.49**



**fmg Glimmer Powder Blush**  
Weightless formula with ultrafine pearl and vitamin E. Buildable coverage. Matte finish. Formulated without parabens, phthalates and fragrance. 8 g reg. \$22

**NOW \$12.49**



**fmg Glimmer Powder Illuminator**  
Lightweight buildable formula with vitamin E. Radiant finish. Formulated without parabens, phthalates and fragrance. 10 g reg. \$22

**NOW \$12.49**



**fmg Glimmer Lip & Cheek Stain**  
Highly pigmented long-wearing gel formula. Brush-tip applicator. Transfer-proof. Formulated without parabens and fragrance. 5.5 ml reg. \$24

**NOW \$13.99**



**fmg Colors of LOVE Glow Balm Duo Illuminating Stick**  
Sheer formula with blend of pomegranate extract, mango and shea butter, vitamins E and C, and avocado oil. Soft, pearlescent finish. Formulated without parabens, phthalates and fragrance. 8 g 924-573 reg. \$32

**NOW \$15.49**







### fmg Glimmer Liquid Eyeshadow

Silky cream formula glides on effortlessly for a soft subtle sheen that lasts all day. Water resistant. Will not smudge or crease. No messy fallout. Buildable coverage. Formulated without parabens, phthalates and sulfates. 2 ml reg. \$20

**NOW \$11.99**



Featured shades (top to bottom): Rose Gold, Diamond Dust, Crystal Lilac, Pink Topaz, Citrine, Moonstone, Sunstone, Fool's Gold, Tiger's Eye.

shop. sale. splurge. all makeup  
up to 65% off

### fmg CathyCat Shadow Gaze Matte Color Stick

Long-wearing formula will not budge or smudge. Buildable and blendable coverage. Matte finish. Formulated without parabens and fragrance. 1.35 g reg. \$27

**NOW \$15.49**



### fmg CathyCat Nine Lives Precision Liquid Eyeliner

Slim-tip brush delivers a precise line of water- and sweat-resistant colour that will not skip, tug or smudge. Formulated without parabens, sulfates, phthalates and talc. 2 ml Blackest Black 800-829 reg. \$26

**NOW \$14.99**



### fmg LOVE at 1st Sight Eyeshadow Palette

Nine buildable matte and shimmer shades create depth and dimension. Versatile formula with antioxidant vitamin E blends seamlessly. Formulated without parabens, phthalates, talc and fragrance. 6.48 g 786-076 reg. \$37

**\$28**

### fmg Glimmer Eyeshadow Quad

Soft powder formula lasts all day. No messy fallout. Buildable coverage. Formulated without parabens and fragrance. 6 g reg. \$26

**NOW \$14.99**





### fmg Glimmer Eyeliner

Long wearing. Retractable. Formulated without parabens, sulfates and talc. 0.28 g reg. \$13

**NOW \$3.99**

#### DIAMOND



#### CREAM



#### WATERPROOF



### fmg Glimmer Brow Definer

Long wearing formula with castor and coconut oils. Smudge/transfer/ sweat/ water-proof. Retractable. Formulated without parabens, sulfates and talc. 0.28 g reg. \$13

**NOW \$3.99**



### fmg Glimmer Lip Liner

Long wearing creamy formula with vitamin E. Helps prevent feathering. Matte finish. Retractable. Formulated without parabens, sulfates and talc. 0.28 g reg. \$13

**NOW \$3.99**



shop. sale. splurge.  
all makeup  
up to 65% off

### fmg Glimmer Liquid Color Eyeliner Pen

Felt tip applicator glides on smoothly and provides precise application. Highly pigmented, lightweight formula is smudge/ transfer/sweat-proof.\* Formulated without parabens, talc, mineral oil, phthalates and fragrance. 1.2 ml reg. \$19

**NOW \$11.99**

\*Based on Consumer Home Use Test Study of 62 applicants.



### fmg Glimmer Liquid Eyeliner

Quick drying, long lasting formula. Transfer/sweat/ water-proof. Matte finish. Formulated without parabens, phthalates and fragrance. 1.1 ml **Blackest Black 354-380** reg. \$18

**NOW \$11.99**

### fmg Glimmer Always On Point Eyeliner

Built-in sharpener. Smudge/water-proof. Formulated without parabens, sulfates and talc. 0.25 g **Black 016-389** reg. \$15

**NOW \$8.99**

### MICRO TIP

creates realistic hair-like strokes

### MATTE FINISH

buildable, long wearing, creamy, yet firm formula

### SPOOLIE

blends and grooms for a natural look



**fmg Glimmer Fine Line Brow Pencil**  
Sweat/smudge-proof, yet easy to remove.\*\* Retractable. Vegan. Formulated without parabens, talc, sulfates, fragrance and mineral oil. 4.1 g reg. \$14

**\$10.99**



\*\*Based on Consumer HUT Study of 22 applicants.





**fmg Colors of LOVE  
Hi-Brow Tinted Brow Gel**  
24-hour water-resistant formula with heart-shaped fibres, clay and vitamin E. Won't clump, smudge or flake. Matte finish. Formulated without parabens, phthalates and fragrance. 3.3 ml  
reg. \$28

**NOW \$15.49**



**fmg Cashmere  
Eyelash Primer**  
With biotin and collagen amino acids to help keep lashes looking healthy and strong. Maximizes the performance of any mascara for gorgeous, lush lashes. Formulated without parabens, sulfates and talc. 10.5 ml  
324-369  
reg. \$35

**NOW \$19.99**



**fmg Cashmere  
Ultimate Volume Mascara**  
Volumizing with biotin and a vegan alternative to collagen to help keep lashes looking healthy and strong. Glossy black finish. Formulated without parabens, sulfates and talc. 8 ml  
Rich Black 153-736  
reg. \$35

**NOW \$19.99**



**fmg Colors of LOVE  
Hi-Brow Sculpting Brow Gel**  
Clear formula with aloe and hyaluronic acid. Flake-proof. Matte finish. Formulated without parabens, phthalates and fragrance. 3.3 ml  
536-695  
reg. \$28

**NOW \$15.49**



**fmg Glimmer SuperShock  
Volumizing Mascara**  
Lash-building formula with plumping fibres. High-gloss finish. Won't clump, smudge or flake. Formulated without phthalates and fragrance. 10 ml  
Black 698-829  
reg. \$25

**NOW \$11.99**



**fmg LOVE at 1st Lash  
Mascara**  
Lash-loving volumizing and lengthening fibres. With lycopene, olive oil and vitamin E. Won't clump, smudge or flake. Formulated without parabens and sulfates. 9 ml  
Blackest Black 698-670  
reg. \$28

**NOW \$15.49**



**fmg LOVE at 1st Lash  
Waterproof Mascara**  
Lash-loving, waterproof formula with volumizing and lengthening fibres. With Lashrez, olive oil and vitamin E. Won't clump, smudge or flake. Formulated without parabens and sulfates. 8.5 ml  
Blackest Black 480-953  
reg. \$28

**NOW \$15.49**



**fmg Glimmer SuperExtend  
Nourishing Mascara**  
Long-wearing lengthening formula with vitamin E, argan and coconut oils. Won't clump, smudge or flake. Formulated without sulfates and talc. 7 ml  
Black 698-848  
Brown Black 698-852  
reg. \$25

**NOW \$11.99**



**fmg Glimmer Wash-Off  
Waterproof Mascara**  
Waterproof volume. Washes off easily with soap and water. Formulated without phthalates and fragrance. 6 g  
Black 535-560  
reg. \$18

**NOW \$11.99**





shop. sale. splurge.  
all makeup  
**up to 65% off**

Featured shade: fmg Match Tint Radiant Tinted Moisturizer in Medium Deep and Dust Finishing Powder in Medium-Deep.



**fmg Match Tint Radiant Tinted Moisturizer**  
Brightens the look of skin tone, boosts moisture and blurs the appearance of flaws. With passion fruit, chia and sunflower seed oils, vitamin E and pro-vitamin B5. Buildable coverage. Radiant finish. Formulated without parabens. 30 ml reg. \$28  
**NOW \$15.49**

Medium Deep 368-416   Tan Deep 368-420   Deep 368-454



**fmg Match Prime Face Perfector**  
Flaw-blurring mattifying oil-free formula minimizes the look of pores and fine lines. Sheer coverage. Matte finish. Formulated without parabens. 30 ml **103-744** reg. \$28  
**NOW \$15.49**



# powder power

New & improved talc-free formulas.

**fmg Match Dust Finishing Powder**  
Loose powder helps to set makeup. Translucent formula with light-diffusing ingredients known to help blur the appearance of imperfections and silica to help with excess shine. Goes on smooth and provides a radiant finish. Sheer to light coverage. Formulated without parabens, phthalates, sulfates, fragrance and talc. Vegan. 4.5 g reg. \$29  
**\$22.99**

Translucent Fair-Light 921-058   Translucent Medium-Deep 921-062

**fmg Match Set Finishing Powder**  
Loose powder blends effortlessly, creating an invisible veil that sets makeup for lasting wear. Translucent formula infused with light-diffusing ingredients known to help blur the appearance of imperfections and silica to help with excess shine. Goes on smooth and provides a soft matte finish. Formulated without parabens, phthalates, sulfates, fragrance and talc. Vegan. 4.5 g **Invisible 750-975** reg. \$29  
**\$22.99**



## way to glow

Silky, liquid pearl formula with a soft filter effect and hint of tint in sheer, flexible shades.

**fmg Match Airbrush Retouch Tinted Primer**  
Helps even the look of skin tone and provides a lit-from-within dewy complexion. With skin-loving ferulic acid, panthenol (provitamin B5) and niacinamide. Formulated without parabens, phthalates, fragrance and talc. 30 ml reg. \$30

**NOW \$17.99**



**fmg Match Filter Serum Tint Foundation**  
Instantly hydrates, blurs and evens tone. With hyaluronic acid, vitamin E and berry complex. Buildable coverage. Demi-matte finish. Formulated without talc, parabens and fragrance. 9 g reg. \$30

**NOW \$17.99**



**fmg Match Wand Correcting Stick**  
Neutralizes unevenness, brightens and colour corrects. Long-wearing formula with shea butter and vitamin E. Formulated without parabens, phthalates and sulfates. 6 g reg. \$28

**NOW \$15.49**



shop. sale. splurge. all makeup  
**up to 65% off**



shop. sale. splurge.  
all makeup  
up to 65% off



**fmg Cashmere Multi-Peptide Face Primer**  
Revitalizing ingredients help to smooth the appearance of fine lines and pores. Sheer gel formula with Matrixyl 3000 peptide blend, hyaluronic acid, collagen and niacinamide. Formulated without parabens, talc and fragrance. 30 ml  
739-284  
reg. \$35  
**NOW \$20.99**



**fmg Cashmere Multi-Peptide Eyeshadow Primer**  
Keeps eyeshadow in place and intensifies the colour. Skin-loving sheer formula with Matrixyl 3000 peptide blend, hyaluronic acid, collagen and panthenol. Formulated without parabens and talc. 9 g  
906-385  
reg. \$35  
**NOW \$19.99**



**fmg Cashmere Under Eye Primer**  
Helps diminish the look of dark circles and fine lines. With caffeine, green tea extract and vegan alternative to collagen. Formulated without parabens, phthalates and fragrance. 9 g  
010-429  
reg. \$35  
**NOW \$19.99**



**fmg Cashmere 24 Hour Foundation\***  
Up to 24 hours of comfortable, breathable wear. Full, flexible coverage. Soft-focus matte finish. Helps blur the appearance of pores and fine lines for a smoother looking complexion. Water-resistant. Formulated without parabens, phthalates and sulfates. 30 ml reg. \$45  
**NOW \$25.99**

|                            |                        |                         |                          |  |
|----------------------------|------------------------|-------------------------|--------------------------|--|
|                            |                        |                         |                          |  |
| Cannoli (W)<br>017-347     | Nougat (W)<br>126-107  | Meringue (W)<br>017-500 | Shortcake (C)<br>018-970 | Buttercream (N)<br>019-134                                   |
|                            |                        |                         |                          |  |
| Marshmallow (N)<br>131-849 | Custard (N)<br>019-172 | Strudel (C)<br>019-225  | Macadamia (W)<br>019-450 | *Available in Cool (C), Neutral (N) and Warm (W) undertones. |



**fmg Cashmere Compact Powder Foundation\***  
Targets shine. Can be used wet or dry. Buildable medium to full coverage. Matte finish. With antioxidant botanicals. Formulated without parabens, phthalates and sulfates. 11.5 g  
reg. \$52  
**NOW \$33.49**

|                 |                 |                 |                 |                 |
|-----------------|-----------------|-----------------|-----------------|-----------------|
|                 |                 |                 |                 |                 |
| N110<br>722-976 | W110<br>111-294 | W120<br>723-040 | W130<br>723-073 | W140<br>723-130 |
|                 |                 |                 |                 |                 |
| W150<br>723-088 | N130<br>111-548 | N150<br>111-658 |                 |                 |



**fmg Cashmere Cream Concealer**  
Long-wearing formula helps to camouflage dark circles and uneven skin tone. With hyaluronic acid and collagen. Full coverage. Matte finish. Formulated without parabens, phthalates, talc and fragrance. 6 g  
reg. \$23  
**NOW \$13.49**

|                         |                       |                           |                            |                        |
|-------------------------|-----------------------|---------------------------|----------------------------|------------------------|
|                         |                       |                           |                            |                        |
| Fair Neutral<br>359-028 | Light Cool<br>359-396 | Medium Neutral<br>359-434 | Medium Tan Warm<br>359-640 | Tan Neutral<br>359-931 |



shop. sale. splurge.  
all makeup  
**up to 65% off**



**fmg Glimmer Nail Lacquer**  
Nail-strengthening, long-wearing, no-chip formula. Gel-like cushion texture. Formulated without parabens and phthalates. 12 ml reg. \$18

**NOW \$10.49**

**SHIMMER**  
Carnation Constellation 042-897

**SATIN**  
Astronautical Blue 042-878

**SATIN**  
Magenta Retrograde 042-882

**SATIN**  
Full Moon Flush 018-730

**SATIN**  
Night Sky Berry 602-658

**SATIN**  
High Magnitude Mauve 018-840

**SATIN**  
Supernova Red 018-267



#### LIMITED EDITION

#### fmg Glimmer Glitz A-Peel Nail Lacquer

Glittery quick-dry formula stays on until you're ready to peel it off. Glossy finish. Formulated without parabens, toluene, formaldehyde and camphor. 12 ml reg. \$18

**NOW \$10.49**

**Leading Lady** 538-430

**Best in Class** 538-459

**Newlywed** 538-425



just peels off  
for fuss-free  
removal



#### fmg Glimmer Nourished Nail Cuticle Oil

Nourishing formula for dry, damaged cuticles. Fortified with safflower oil to help restore and condition nails and cuticles. Formulated without phthalates, sulfates, parabens, toluene, formaldehyde and camphor. 12 ml 612-894 reg. \$21

**NOW \$11.99**



#### fmg Glimmer Nail Base & Top Coat

2-in-1 base and top coat primes and shields nails. Glossy finish. Formulated without parabens and phthalates. 12 ml 018-161 reg. \$18

**NOW \$10.49**



#### fmg Glimmer Nail Air Dry Drops

Need a fast finish? Accelerate your dry time with just a drop or two! Helps prevent smudges and nicks. Formulated without phthalates, sulfates, parabens, toluene, formaldehyde and camphor. 12 ml 612-913 reg. \$21

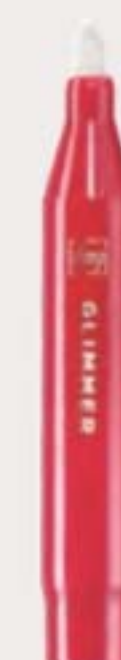
**NOW \$11.99**



#### fmg Glimmer Nail Lacquer Eraser Pen

For a clean and perfected mani. Won't dry out nails or cuticles. Formulated without parabens and phthalates. 4 ml 704-443 reg. \$18

**NOW \$10.49**





**fmg Complexion Blending Brush**  
Dual ended: rounded buffing foundation brush and concealer brush. 17 cm L. Synthetic bristles. **933-210**  
reg. \$35

**NOW \$19.99**

**fmg Precision Eye Brush**  
Dual ended: pointed pencil brush and angled eyeliner brush. 13 cm L. Synthetic bristles. **933-187**  
reg. \$25

**NOW \$13.49**

**fmg Eyeshadow Blending Brush**  
Dual ended: crease brush and allover eyeshadow brush. 15 cm L. Synthetic bristles. **933-320**  
reg. \$25

**NOW \$13.49**

**fmg Blush & Contour Brush**  
Dual ended: angled contour brush and tapered, oval blush brush. 18 cm L. Synthetic bristles. **933-259**  
reg. \$34

**NOW \$18.49**

shop. sale. splurge. all makeup  
**up to 65% off**



**fmg Oil Rewind Roller Ball**  
Reusable 360° rotating volcanic stone roller instantly absorbs oil and grease without disturbing makeup. 8 cm L x 3 cm W. Plastic handle, protective cap. **508-294**  
reg. \$28

**NOW \$15.49**



**fmg Set & Fix Spray**  
Helps keep makeup smudge-proof. Non-greasy, non-sticky. Formulated without parabens, sulfates, phthalates and silicones. 50 ml **416-707**  
reg. \$22

**NOW \$11.99**



**fmg Express Makeup Brush Wash**  
Easily removes dirt, oil and makeup. With aloe vera and green tea extract. Formulated without alcohol and sulfates. 30 ml **141-368**  
reg. \$22

**NOW \$12.49**



**fmg Flawless Complexion Sponge**  
Dual ended: allover makeup application rounded end, and contouring and concealing flat end. 6 cm L x 4 cm W. 100% PU, latex-free. **140-160**  
reg. \$16

**NOW \$8.99**



**fmg Kabuki Brush**  
Soft, angled brush for pressed or loose powders. Retractable with protective cap. 10 cm L x 3 cm diam. Synthetic bristles. **732-370**  
reg. \$29

**NOW \$16.99**



**Daily Beauty Tools Tweezers**  
Amp up your beauty routine with angled tweezers. Stainless steel. 9 cm L. **747-020**  
reg. \$6

**NOW \$3.49**



**fmg Makeup Remover Wipes**  
With vitamin E and aloe, chamomile, cucumber, marshmallow root and oat extracts. Resealable pack of 24 wipes. Formulated without parabens, gluten, sulfates, phthalates and fragrance. **333-867**  
reg. \$18

**NOW \$8.99**



**fmg Vanity Organizer**  
4 compartments with 2 removable inside dividers, 3 outer pockets and lattice elastic straps. Folds for easy storage. 24 cm L x 15 cm W x 13 cm H. Polyester. **022-816**  
reg. \$46

**NOW \$25.99**



**fmg Waterproof Lip & Eye Makeup Remover**  
Dual-layer oil and water remover leaves skin fresh and clean. Formulated without mineral oil, tar, talc and parabens. 110 ml **352-243**  
reg. \$18

**NOW \$8.99**



**fmg Moisturizing Eye Makeup Remover Lotion**  
Cleans, refreshes and moisturizes as it whisks away eye makeup. Formulated without parabens, sulfates and phthalates. 75 ml **037-978**  
reg. \$12

**NOW \$6.49**



**fmg Unready Makeup Remover Cloth**  
Dual sided. Reusable and travel friendly. 100% polyester. 25 cm sq. Machine wash and dry. **230-176**  
reg. \$22

**NOW \$12.49**



# SKIN CARE

Healthy-looking, hydrated skin starts here. Address your skin care concerns with our high-performance formulas.

Isa Knox LXNEW Clean  
Nourishing Cream  
Cleanser

## FREE

WITH PURCHASE OF ANY 2  
ANEW ULTIMATE OR PLATINUM PRODUCTS,  
PAGES 30-33. \$21 VALUE.  
LIMITED QUANTITIES.  
Sold separately on page 56.







**Anew Ultimate Supreme  
Radiant Firming Cream**

A lightweight moisturizer, perfect for daytime use. With panthenol, niacinamide and peptides to help boost hydration, and restore the look of brightness and firm skin contours. With bakuchiol, an alternative to retinol to reduce the appearance of wrinkles and discolourations without irritation. Clinically tested to improve the look of skin texture and elasticity. 50 ml

835-052  
reg. \$85  
**\$57.99**



**Anew Ultimate Multi-Performance Eye System**

Reduces the look of crow's feet and helps de-puff the appearance of under-eye bags.

Cream, 15 g; elixir, 2.5 g. 021-862  
reg. \$59  
**\$41.99**



**Anew Ultimate Night Repair Serum**

See improvement in the look of tone and texture.

With peptides, licorice, hyaluronic acid and niacinamide. Use PM before moisturizer. 30 ml

625-355 reg. \$63  
**\$42.99**



**Anew Ultimate Supreme Eye Balm**

Moisturizing formula infused with squalane, sunflower seed oil and antioxidant vitamin E. Wear alone or under makeup. 2.9 g

625-340  
reg. \$63  
**\$42.99**



**Anew Ultimate Multi-Performance Night Cream**

It works while you sleep to revive and recreate the look of youthful skin. 50 g

763-311  
reg. \$59  
**\$41.99**



**Anew Ultimate Supreme Dual Elixir**

Black Pearl Extract combined with precious oils. See a dramatic difference in the appearance of even advanced signs of aging. Serum/oil, 20 ml each.

963-925 reg. \$84  
**\$57.99**



**Anew Ultimate Supreme  
Advanced Performance Crème**

With Black Pearl Extract. See a dramatic difference in the appearance of deep wrinkles and skin radiance. 50 g

014-735 reg. \$84  
**\$57.99**



**Anew Ultimate Multi-Performance  
Day Cream Broad Spectrum SPF 25**

See the look of wrinkles appear reduced and the look of youthful vibrance return. 50 g

659-769  
reg. \$59  
**\$41.99**



defying gravity  
has never been easier



**Anew Platinum Firm and Sculpt Cream for Neck and Chest**

With Peptide Lifting Complex to target the skin on your neck and chest, which is more vulnerable to wrinkles and sagging. Use PM after cleansing. 50 g **763-584** reg. \$59

**\$41.99**

**Anew Platinum Night Cream**

Skin appears smoother overnight and looks resculpted over time. 50 g **753-439** reg. \$59

**NOW \$31.49**

**Anew Platinum Eye & Lip Cream**

Smooths the appearance of the area around eyes and lips. Dual applicator. 15 g **902-614** reg. \$59

**NOW \$31.49**

**Anew Platinum Day Cream Broad Spectrum SPF 25**

Reduces the appearance of wrinkles for a more youthful complexion while sagging skin feels lifted. 50 g **659-439** reg. \$59

**NOW \$31.49**



**Anew Platinum Age Delay Serum**

With niacinamide, panthenol and peptide. Formulated to enhance the look of elasticity for a firmer appearance. Use AM and PM before moisturizer. 30 ml **625-609** reg. \$63

**NOW \$31.99**



**Anew Platinum Sculpting Sleep Mask**

An overnight mask that helps lift and plump the look of skin while providing hydration while you sleep. Formulated with skin-loving ingredients, including peptides, panthenol and niacinamide. Clinically tested to improve the look of skin texture and wrinkles in two weeks. 50 ml **835-033** reg. \$60

**\$41.99**



**Anew Platinum Sculpting Body Serum**

With moisture-boosting niacinamide, panthenol (pro-vitamin B5) and peptides. 200 ml **506-249** reg. \$63

**NOW \$31.99**





## BROAD SPECTRUM SUN PROTECTION

### WITH

- HYALURONIC ACID
- CERAMIDES
- CENTELLA ASIATICA

### PLUS

- BLENDS SEAMLESSLY
- PERFECT FOR ALL SKIN TONES
- FORMULATED WITHOUT FRAGRANCE

### BEYOND GLOW DAY

**Milk SPF 50**  
With higher SPF.  
50 ml  
150-278  
reg. \$55

**Moisturizer SPF 30**  
For face and body.  
50 ml  
149-737  
reg. \$55

**\$42.99 each**

# sun care that doubles as skin care

NEW BEYOND GLOW SUNSCREENS



SPF 50  
rich milky  
texture for  
extra care



SPF 30  
lightweight  
texture for  
everyday wear

Best of  
K-Beauty





## Cleansers With Benefits



**Cleanse + Hydrate**  
For Dry Skin  
With Hyaluronic Acid & Niacinamide  
**Beyond Glow Hyaluronic Acid + Niacinamide Facial Cleanser**  
150 ml 627-821  
reg. \$22  
**\$17.49**



**Cleanse + Brighten**  
For Normal Skin  
With Vitamin C & AHA  
**Beyond Glow Vitamin C + AHA Facial Cleanser**  
150 ml 628-450  
reg. \$22  
**\$17.49**



**Cleanse + Exfoliate**  
For Oily Skin  
With Salicylic & Citric Acids  
**Beyond Glow Salicylic + Citric Acids Facial Cleanser**  
150 ml 627-798  
reg. \$22  
**\$17.49**



fruit-infused  
cleansers

## Cleanse + Remove Makeup

For All Skin Types  
With Kiwi Extract,  
Vitamins B3, B9 and  
Provitamin B5

**Beyond Glow Gentle Foaming Cleanser with Vitamins + Kiwi**

A gentle foaming water-based cleanser that easily washes off makeup and residue without stripping your skin, leaving it feeling soft and smooth. Skin looks brighter and revitalized. 150 ml 575-760  
reg. \$27  
**\$20.99**

For All Skin Types  
With Mango Butter  
& Papaya Enzyme

**Beyond Glow Melting Balm Cleanser with Enzyme + Mango Butter**

Transforms into a silky oil when massaged onto skin. Add water for a creamy cleansing milk that rinses away makeup and residue, leaving your skin feeling soft, smooth and refreshed. 150 ml 575-865  
reg. \$27  
**\$20.99**



\*Based on a consumer perception study of 33 people.



## in one use

relieves the look of redness  
caused by dryness<sup>†</sup>

### Beyond Glow Centella Redness Relief Serum

Suitable for sensitive skin. A gel serum  
with centella asiatica, panthenol and  
glycerin. 30 ml  
350-399  
reg. \$48  
**\$35.99**



BEFORE\*



AFTER

\*Subject's face exposed to  
heat for 20 minutes to induce  
skin irritation.

†Based on a consumer perception  
study of 32 people.

\*\*Based on a consumer perception  
study of 31 people.

††Based on a clinical study  
of 32 people.

## BEYOND GLOW

### CENTELLA COLLECTION

SKIN CARE

**96%**  
said skin  
feels  
instantly  
cooled\*\*

**Beyond Glow Centella Cooling Toner**  
Suitable for sensitive skin. Refreshes and moisturizes in seconds.  
200 ml  
350-403  
reg. \$35  
**\$27.99**

**in 6 days**  
skin barrier improved<sup>††</sup>

**Beyond Glow Centella Soothing Cream**  
Suitable for sensitive skin. Moisturizes and reduces the look of dryness.  
80 ml 350-422  
reg. \$48  
**\$35.99**



## Nourish

**Beyond Glow  
Lipcerin Intensive  
Nourishing  
Lip Care**  
reg. \$28  
**\$24.99**



Nourishing  
052-325

An intensive, glistening formula that hydrates. With peptide, moisture enhancing glycerin and shea butter. Clear finish. 15 ml

## Plump

**Beyond Glow  
Lipcerin  
Plump and Cool  
Lip Care**  
reg. \$28  
**\$24.99**



Plump and Cool  
052-344

An intensely moisturizing, glistening formula that plumps and softens the look of lips. With cooling menthol to help increase the appearance of lip volume. Clear finish. 15 ml

## Tint

**Beyond Glow  
Lipcerin  
Hydrating Tinted  
Lip Care**  
reg. \$28  
**\$24.99**  
each



Twinkle  
052-750



Flash  
052-909



Gleam  
053-097



Flare  
053-101



Splendor  
053-078



Smolder  
053-140

An intensely moisturizing, glistening formula that softens the look of lips and adds a glossy hint of colour. With peptide, moisture enhancing glycerin and shea butter. 15 ml



DAY SHIFT



NIGHT SHIFT

# shifting shades magic results

Presto change-o! Formula interacts with your lips' pH and transforms to your personalized shade of pink.



**Day Shift**  
Lemon/lime shade shifts to **warm pink** on lips. **840-756**



And it's like skin care for your lips because it has:

### ceramides

Known to help support skin's moisture barrier

### peptides

Known to help support a youthful look

### glycerin

Known to help enhance moisture

### shea butter

Known to help soften and hydrate dry lips

### superfruit extracts

With the benefits of blueberry, amla and açai

## NEW

**Beyond Glow  
Color Shift Tinted  
Lip Care**  
reg. \$28

**\$24.99 each**

An intensive, glistening formula that hydrates dry lips with peptide, moisturizing glycerin, shea butter and fruit extracts while adapting to your lips for a customized shade. 15 ml

**Night Shift**  
Black shade shifts to **cool pink** on lips **840-760**







### Beyond Glow Niacinamide 2% Cream Mist

Deliver an instant boost of hydration to your skin with this creamy, fast absorbing spray-on serum that can be used under or over makeup for glowing skin anytime, anywhere. Infused with niacinamide. 100 ml

617-365

reg. \$48

**\$36.99**



### Beyond Glow Niacinamide 10% Firming Cream

Hydrating neck and chest cream formulated with tried and true ingredients niacinamide, shea butter and squalane derived from olive oil, plus panthenol, which helps support the skin barrier. 100 ml

052-249

reg. \$53

**\$41.99**



### Beyond Glow Niacinamide 10% Eye Cream

Moisturizing eye cream formulated with tried and true ingredients niacinamide and caffeine, plus panthenol, which helps support the skin barrier. 30 ml

052-272

reg. \$43

**\$27.99**



## In just 4 weeks:

### Beyond Glow Niacinamide 10% Firming Cream

- Crepey skin appears smoothed\*
- Neck and décolleté lines look improved\*

\*Based on a clinical study on 31 people.

### Beyond Glow Niacinamide 10% Eye Cream

- Crow's feet appear reduced†
- Helps under-eye bags look depuffed†

†Based on a clinical study on 30 people.

# Minimize the look of PORES



serum + cream  
together

**3X**

Reduction in the  
look of pores\*\*

### Beyond Glow Niacinamide 10% + Panthenol Serum

Helps improve the look of tone and elasticity. Niacinamide, also known as vitamin B3, helps even the look of skin tone and supports the skin barrier. Panthenol, also known as provitamin B5, helps lock in moisture. 30 ml 255-612 reg. \$55

**\$42.99**

### Beyond Glow Niacinamide 10% All-in-One Cream

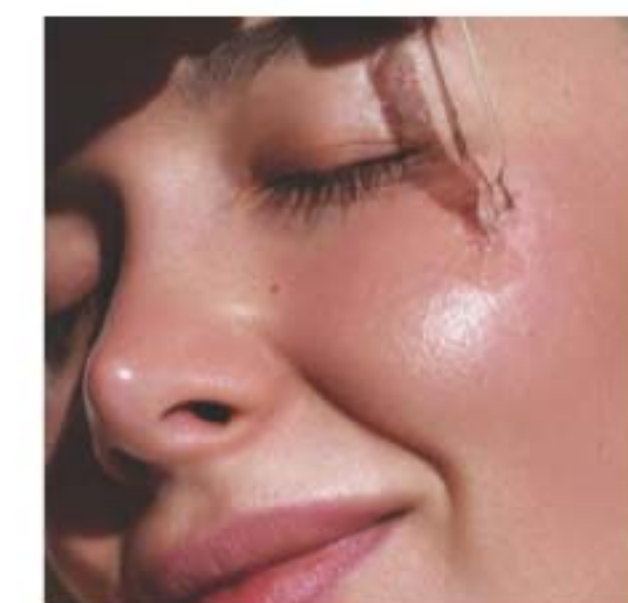
Facial cream that helps enhance your healthy-looking glow. All-in-one facial cream helps brighten the look of skin, reduces the appearance of fine lines and helps support the skin barrier. 110 ml 617-350 reg. \$54

**\$41.99**

Serum + cream, when used together:  
**Reduce the look of pores by**

**44%<sup>††</sup>**

\*\*Vs. using the serum alone, based on a clinical study. ††In a 4-week clinical trial of 32 people.







**Beyond Glow**  
Hyaluronic Acid 1.5% + Ferulic Acid Serum

Hyaluronic acid, known as a "moisture magnet," helps infuse skin with instant and lasting hydration. Ferulic acid, a powerful antioxidant, helps support skin against environmental stressors. 30 ml **255-593** reg. \$55

**NOW \$31.99**



**Beyond Glow**  
Vitamin C 6% + Ferulic Acid Serum

Vitamin C helps improve the appearance of radiance for a glowing look. Ferulic acid, a powerful antioxidant, helps support skin against environmental stressors. 30 ml **255-589** reg. \$55

**\$42.99**

## Clinically tested to improve skin radiance in 3 days

Q

What makes Beyond Glow Vitamin C Serum so special?

A



**125-hour antioxidant effect\***



**4X stronger skin barrier in 2 weeks†**

Just look at the **antioxidant effect!**  
of Beyond Glow Vitamin C 6% + Ferulic Acid Serum

With  
Beyond  
Glow  
Serum



Without  
Beyond  
Glow  
Serum



## Boosts absorption of vitamin C by **2X\*\***

Use with  
Vitamin C  
6% + Ferulic  
Acid Serum  
for optimal  
results.

**Beyond Glow**  
Galvanic Booster Device

Give your skin spa pampering at home in 3 minutes. Red LED light helps tone the appearance of skin texture, enhances your radiant glow and helps promote a healthy look. On-the-go compact design. Automatically turns on and off. Requires 2 cell batteries. **255-627** reg. \$85

**\$69.99**

\*Evaluated by in vitro test. †Based on stripped skin instrumental study on 31 people. \*\*Evaluated by Dongduk Women's University Industry-Academia Cooperation [ex vivo test, DPPH, Oct. 13 to 24, 2023].

# The Trending Star Ingredient: SNAIL MUCIN Complex

Clinically tested to  
improve skin tone  
and brightness

**Beyond Glow Snail Mucin Complex  
+ Panthenol Cream**

Moisturizes while improving the appearance of texture and elasticity. With snail mucin complex and panthenol, which helps lock in moisture. 110 ml

**255-536**

reg. \$52

**\$40.99**

**Beyond Glow Snail Mucin Complex  
+ Niacinamide Serum**

Moisturizes, brightens and retexturizes the look of skin. With snail mucin complex and niacinamide, also known as vitamin B3, which helps even the look of skin tone and supports the skin barrier. 100 ml **255-574**

reg. \$52

**\$40.99**

Our cream and serum, formulated with snail mucin complex, moisturize and help brighten the appearance of skin with a clear, cushiony yet fast-absorbing texture that disappears into the skin while plumping its look with hydration.



## Real Formulas, Real Results



"I'M GETTING SO MANY COMPLIMENTS ON MY BARE SKIN.  
I ALMOST DON'T WANT TO EVEN WEAR MAKEUP!"

"BEYOND GLOW IS A GAME CHANGER.  
I HAVE SEEN A SIGNIFICANT IMPROVEMENT IN MY SKIN."

The Ambassadors were gifted with the Beyond Glow Snail Mucin Cream, plus the 4 serums from the Beyond Glow regimen, which they used with the Galvanic Booster Device, AM and PM, for 2 weeks.



# see firmer looking skin

## COLLAGEN BOOSTER COLLECTION

Formulated with **peptides**, **exfoliators** and **amino acids** to help skin look **firmer** and **smoother**.

**Isa Knox Anew Clinical Collagen Booster Firming Cream**  
With peptides to help restore a more youthful looking appearance, and moisturizing niacinamide and squalane. Hygienic, airless pump. 50 ml  
069-327  
reg. \$65  
**\$42.99 \$31.99**



### Isa Knox Anew Clinical Collagen Booster Eye Lift Pro Dual Eye System

Helps eye area look lifted, firmer, tighter. With a peptide complex. Gel, 10 ml; cream, 10 ml. 564-550  
reg. \$56

**\$34.99 \$25.99**



**Isa Knox Anew Clinical Collagen Booster Rejuvenating Serum Ampoules**  
Powerful peptide blend. 60 capsulated single-use ampoules. 0.22 ml each. 803-077  
reg. \$92

**\$76.99 \$57.49**



**Isa Knox Anew Clinical Collagen Booster Microneedling Polisher**  
At-home alternative to microdermabrasion and microneedling. Diminishes the look of pores, fine lines and wrinkles. 50 ml 798-592 reg. \$48

**\$29.99 \$22.49**



See improvement in the look of wrinkles...and it moisturizes too.



**Isa Knox Anew Clinical  
Revitalize & Reveal  
Advanced Wrinkle Corrector**  
Wrinkles appear reduced.  
50 ml 470-100  
reg. \$56  
**\$41.99 \$31.49**



\*In 6 out of 8 attributes tested over a 7-week period.

**Isa Knox Anew Clinical  
Revitalize & Reveal  
Extra Strength Retexturizing Peel**  
Results similar to a 35% pro glycolic peel.\*  
30 fragrance-free pads, 5 cm diam. 632-774  
reg. \$56  
**\$41.99 \$31.49**



**Isa Knox Anew Clinical  
Revitalize & Reveal  
Resurfacing Expert Smoothing Fluid**  
Like a pro microdermabrasion but without the same irritation. 30 ml 852-282  
reg. \$62  
**\$44.99 \$33.49**



get more  
youthful  
looking skin

Reduce the look  
of wrinkles  
with retinol.



**Isa Knox Anew Clinical  
Line Eraser with Retinol Targeted Treatment**  
For targeted lines and wrinkles such as around forehead and mouth. Use PM. 20 ml 925-159  
reg. \$56  
**\$41.99 \$31.49**

**Isa Knox  
Anew Clinical  
Revitalize & Reveal  
Resurfacing Lotion for Body**  
Exfoliates with gentle yet effective AHA lactic acid. Moisturizes with shea butter. 150 ml 390-785  
reg. \$48  
**\$29.99 \$22.49**



**Isa Knox Anew Clinical Line Eraser with Retinol [1.0%] Advanced Retinol Serum**  
Our highest concentration of retinol. Reduces the appearance of fine lines, wrinkles and dark spots. Use PM. 30 ml 390-751  
reg. \$72  
**\$57.99 \$43.49**



**Isa Knox Anew Clinical  
Line Eraser with Retinol Treatment**  
For overall fine lines and wrinkles. Great for first-time retinol users. Use AM/PM. 30 ml 763-330  
reg. \$63  
**\$44.99 \$33.49**



#### Anew Vitamin C Exfoliating Peel Pads

With PHA and pineapple extract, vitamin C, panthenol and glycerin. Helps brighten skin's look. 130 ml, 70 pads. **169-143**  
reg. \$40  
**\$31.99**



#### Anew Vitamin C Antioxidant Lip Treatment

Nourishes lips with vitamins C and E. 3.8 g  
**784-547**  
reg. \$20  
**\$13.99**



#### Anew Vitamin C Brightening Eye Cream

Helps reduce the look of dark circles. Under-eye area looks brighter and more even toned. 15 ml  
**953-602**  
reg. \$48  
**\$33.99**



#### Anew Vitamin C Brightening Serum

Skin appears energized and brighter with the power of 10% pure vitamin C. 30 ml **522-066**  
reg. \$62  
**\$38.99**



#### Anew Vitamin C Illuminating Priming Moisturizer

Wear alone or under makeup. 50 ml **914-671**  
reg. \$48  
**\$33.99**

## C Spot Go

Vitamin C is known as the go-to skin brightener. Now skin appears brighter in 1 week\* with a concentrated formula to target uneven skin tone and dullness.

SKIN CARE



**97%**  
agree

skin discolourations appear to fade<sup>†</sup>

\*In a clinical study.  
†In a 4-week, consumer perception study.

#### Anew Vitamin C Targeted Skin Brightener

With the triple-antioxidant power of 7% vitamin C, 2% ferulic acid and vitamin E, skin looks brighter and more even toned with a dramatically improved appearance in overall skin clarity. With moisturizing allantoin and aloe. 15 ml  
**169-177**  
reg. \$48  
**\$33.99**



## EVERY BODY WANTS TO LOOK RADIANT

Vitamin C, plus other skin-nourishing ingredients, helps your skin look brighter and smoother all over.



**Anew Vitamin C Nourishing Body Butter**  
With hydrating shea butter and niacinamide, plus vitamins C and E to help restore the look of radiance. Fruity-floral and citrus scent.  
230 ml 443-767  
reg. \$45  
**\$28.99**

**Anew Vitamin C Glow Body Scrub**  
Sugar-based formula with pineapple and papaya enzymes, and coffee seed extract, exfoliates dry, dull skin. Citrus scent.  
255 g 443-752  
reg. \$50  
**\$28.99**



**Anew Vitamin C Dry Body Oil**  
Sunflower seed and jojoba oils help skin feel supple. 100 ml  
074-432  
reg. \$48  
**\$27.99**



92% of women believe it dramatically improves skin's overall appearance.\*

**Anew Power Serum**  
Improves the look of wrinkles, radiance, firmness and texture. Use AM and PM after cleansing, before moisturizing. 30 ml  
838-047  
reg. \$63  
**\$41.99**

\*Based on those who expressed an opinion in a consumer perception study.



ISA KNOX  
ANEW  
SOLAIRE

**Everyday Face Lotion**  
Broad Spectrum SPF 50  
50 ml 281-418  
reg. \$45  
**\$35.99**

**Active Face & Body Lotion**  
Broad Spectrum SPF 50  
80 ml 531-435  
reg. \$55  
**\$41.99**

**Everyday Mineral Face Protection Cream**  
Broad Spectrum SPF 50  
Suitable for sensitive skin. Lightweight formula with zinc oxide. Water-resistant up to 40 minutes.  
50 ml 941-708  
reg. \$45  
**\$35.99**





Cleanse while getting  
a burst of hydration

**belif Aqua Bomb Jelly Cleanser**

A gentle jelly-to-foam cleanser with amino acids and glycerin-based cleansing agents. 160 ml 445-353

**\$40.50**



Rejuvenate dull, fatigued skin by  
locking in hydration all night long

**belif Aqua Bomb Sleeping Mask**

Jelly pudding textured face mask replenishes with quick absorbing hydration for a complexion that looks radiant and glowing. 75 ml 514-717 reg. \$59

**\$51.50**



**Anew Hydra Fusion  
De-Puffing  
Eye Serum**

Eyes look and feel refreshed. With caffeine and hyaluronic acid. Boosts hydration around eye area by 3X. 15 ml 137-737 reg. \$48

**\$32.99**

**Anew Hydra Fusion  
1.5% Hyaluronic  
Acid Serum**

With 3 different molecular sizes of HA that reach multiple layers of skin's surface to help plump the look of skin. 30 ml 290-390 reg. \$62

**\$36.99**

**Anew Hydra Fusion  
Cleansing Micellar  
Water**

No need to rinse off. 300 ml 139-380 reg. \$21

**\$13.99**

**Anew Hydra Fusion  
Nighttime Facial  
Treatment**

Hyaluronic acid plus shea butter beads. Relaxing rose scent. 50 ml 139-429 reg. \$48

**\$32.99**

**Anew Hydra Fusion  
Gel Cream**

Lasting hydration. Helps skin appear smoother. 50 g 266-893 reg. \$48

**\$32.99**





**NORMAL TO DRY SKIN**

**Isa Knox LXNEW Clean  
Nourishing Cream Cleanser**

Removes impurities and makeup while  
restoring moisture. 150 ml **717-990**  
reg. \$21

**NOW \$12.49**



**NORMAL, DRY AND COMBINATION SKIN**

**Isa Knox LXNEW Clean  
Balancing Gel Cleanser**

Gel to foam. Helps remove oil and impurities.  
150 ml **718-010**  
reg. \$21

**NOW \$12.49**



**OILY TO NORMAL SKIN**

**Isa Knox LXNEW Clean  
Soothing Whipped Oil Cleanser**

Helps eliminate impurities and excess oil.  
150 ml **718-025**  
reg. \$27.50

**\$20.99**

**Avon Solutions Banishing Serum**  
An intensive serum with ingredients  
known to help improve the appearance  
of dark spots and the look of uneven  
skin tone. 30 ml **507-905** reg. \$25

**NOW \$14.99**

**Avon Solutions  
Dramatic Firming Serum**  
This moisturizing serum contains  
effective anti-aging ingredients  
that help promote a more youthful  
appearance. 30 ml **507-871**  
reg. \$25

**NOW \$14.99**



**Avon Solutions Nurtura Serum**  
With nourishing ingredients known  
to help combat dryness and flakiness,  
and help hydrate. 30 ml **507-924**  
reg. \$25

**NOW \$14.99**



**Avon Solutions  
Dramatic Firming  
Cream**

Skin looks  
and feels smoother.  
50 ml  
**374-657**  
reg. \$21

**NOW \$11.99**



**Avon Solutions  
Nurtura  
Replenishing  
Cream**

Adds moisture  
to dry skin. 50 ml  
**908-263**  
reg. \$21

**\$15.99**



**Avon Solutions  
Banishing Cream  
Skin Discoloration  
Improver**

Helps improve the  
look of skin tone.  
50 ml  
**267-115**  
reg. \$21

**NOW \$11.99**



**Avon Solutions  
Anti-Aging Cream**  
Moisturizing formula  
helps to smooth the  
appearance of fine  
lines and wrinkles.  
50 ml  
**949-460**  
reg. \$21

**NOW \$11.99**



Best of  
K-Beauty



**Rice Water Bright  
Facial Massage  
Cream**

With rice water, vitamins A, B and E, ceramide and minerals. After cleansing, massage into skin 2-3 times a week. 200 ml **450-200** reg. \$35

**NOW \$20.99**

**Rice Water Bright  
Foaming Cleanser**

Light whipped foam. With rice water and soapwort extract. Helps skin look clearer and brighter. 300 ml

**508-093**  
reg. \$27

**\$20.99**

**Rice Water Bright  
Rice Bran  
Gentle Exfoliating  
Cleanser**

Daily scrub with organic rice bran powder, rice bran oil and hydrated silica. 300 ml **376-865** reg. \$27

**NOW \$15.74**

**Rice Water Bright  
Cleansing Facial  
Wipes**

Great on the go. With rice extract to moisturize while cleansing. Removes eye makeup. 50 wipes. **508-108** reg. \$18

**\$13.99**



**Smaller Size!  
Rice Water Bright  
Foaming Cleanser**  
Light whipped foam. With rice water and soapwort extract. Convenient size for your bathroom cabinet. 150 ml **478-479** reg. \$18  
**\$13.99**



**Rice Water Bright  
Mild Cleansing  
Water**  
Removes impurities via the micellar method, so no need to rinse off! 500 ml **288-360** reg. \$25  
**NOW \$14.99**



**Rice Water Bright  
Facial Cleansing  
Lotion**  
Helps brighten the appearance of skin. Gently removes makeup and impurities. 200 ml **720-184** reg. \$20  
**\$15.99**

**Rice Water Bright  
Light Facial Cleansing Oil**  
With jojoba oil and rice water extract, known to moisturize and help brighten the look of skin. 150 ml **720-199** reg. \$28  
**\$21.99**





# FRAGRANCE

From alluring eau de parfums to spirited colognes, fresh florals to woody notes, each scent in our collection lets you express yourself.

elegant yet wild

**NEW**

fresh citrus

**LYRD**  
Clementine & Poppy  
Eau de Parfum  
50 ml 922-384  
reg. \$63  
**\$49**

Top: Fresh Air  
Accord, Blood  
Orange, Clementine,  
Bergamot, Black  
Currant  
Mid: Guava, Poppy  
Flowers, Orange  
Blossom, Jasmine,  
Tuberose  
Base: Cashmere  
Woods, Sheer Musk





lush &  
invigorating



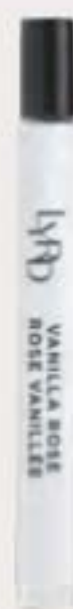
amber floral  
**LYRD Vanilla Rose**  
Eau de Parfum  
Dewy roses, comforting  
vanilla and cedarwood.  
50 ml 094-020  
reg. \$60  
**\$49**



fresh green floral  
**LYRD Pear Blossom & Bamboo**  
Eau de Parfum  
50 ml 763-804  
reg. \$63  
**\$49**

PEAR BLOSSOM & BAMBOO  
FLEURS DE POIRIER ET BAMBOU

Top: Lemon Zest, Lavender, Kumquat, Dewy Bamboo  
Mid: Magnolia, Sweet Pear Blossom, Water Lily  
Base: Cashmere Woods, White Amber, Skin Musk



**LYRD Vanilla Rose**  
Eau de Parfum Travel Spray  
10 ml 505-128  
reg. \$27  
**\$20.99**



**LYRD Sultry Orchid**  
Eau de Parfum Travel Spray  
10 ml 612-799  
reg. \$27  
**NOW \$15.49**



amber floral  
**LYRD Sultry Orchid**  
Eau de Parfum  
Pink saffron, red orchid and warm  
amber. 50 ml 892-960  
reg. \$60  
**\$49**



# it's your time to bloom

soft floral

## LYRD Honeysuckle Blossom Eau de Parfum

Apple blossom, honeysuckle nectar and vanilla orchid. 50 ml **167-270** reg. \$48

**\$36**



## LYRD Honeysuckle Blossom Hair and Body Mist\*

Lightweight formula with notes of apple blossom, honeysuckle nectar and vanilla orchid. Leaves hair with a subtle, healthy-looking shine. 96 ml **167-231**

reg. \$27

**\$20.99**



## LYRD Peony Rosé Hair and Body Mist\*

Lightweight formula with notes of peony petals, pink currant and sheer musk. Leaves hair with a subtle, healthy-looking shine. 96 ml **167-212**

reg. \$27

**\$20.99**



fresh green floral

## LYRD Coastal Lotus Eau de Parfum

Sparkling mandarin, island gardenia and lotus flower. 50 ml **869-906**

reg. \$60

**\$49**



## LIMITED EDITION

❖ **LYRD Candle - Some Like It Hot**  
Creamy coconut, juicy mandarin and warm vanilla. Up to 30 hours of burn time. 198.4 g. 8 cm diam. x 9 cm H. Glass jar/soy-blend wax.

**746-450**

reg. \$35

**\$28.49**



## LIMITED EDITION

❖ **LYRD Candle - Back From The Beach**  
Orange blossom, water lily and musk. Up to 30 hours of burn time. 198.4 g. 8 cm diam. x 9 cm H. Glass jar/soy-blend wax.

**747-035**

reg. \$35

**\$28.49**



## LIMITED EDITION

❖ **LYRD Candle - Surf's Up, Bottoms Up**  
Ripe banana, tropical rum and sweet whipped cream. Up to 30 hours of burn time. 198.4 g. 8 cm diam. x 9 cm H. Glass jar/soy-blend wax.

**746-445**

reg. \$35

**\$28.49**



## LIMITED EDITION

❖ **LYRD Candle - Bonfire**  
Earthy oakmoss, salty beach wood and fiery amber. 312 g candle gives up to 28 hours of burn time. 11 cm diam. x 8 cm H. Wooden wick, glass jar, soy-blend wax.

**765-625**

reg. \$35

**\$27.99**

Place candle on trivet or holder before lighting to protect furniture.  
Never leave burning candles unattended. Keep away from children and animals.



## IT'S YOUR LIFE, OWN IT.

Express yourself with an exciting, affirmative statement of pure confidence, fierce independence and vibrant energy.



amber floral

### Live Out Loud U Be U

Top: Nectarine, Cardamom, Marshmallow  
Mid: Sweet Fig, Coconut Praline, Jasmine  
Base: Whipped Vanilla, Creamy Woods, Musk

Body Cream 048-000

Body Mist 047-114

fruity floral

### Live Out Loud Retro Sun

Top: Guava, Tropical Mango, Tangerine  
Mid: Plumeria, Orange Flower, Creamy Coconut  
Base: Rich Amber, Moss, Cedarwood

Body Cream 047-300

Body Mist 047-076

fruity floral

### Live Out Loud Guilt Free

Top: Bergamot, Plum, Pink Dragon Fruit  
Mid: Muguet, Rose, Violet Leaf  
Base: Sandalwood, Vanilla, Creamy Musk

Body Cream 047-320

Body Mist 047-100

**NEW**

### Live Out Loud Body Cream

Fluffy, whipped cream with hyaluronic acid moisturizes, leaving skin soft, glowing and beautifully scented. 150 ml reg. \$32

**\$23.99 each**

**NEW**

### Live Out Loud Body Mist

Lightweight, refreshing mist absorbs quickly and leaves skin feeling soft, supple and beautifully scented. 100 ml reg. \$34

**\$25.99 each**







fruity floral

**Live Out Loud #4U Eau de Parfum**  
Mandarin, peach blossom and  
vanilla. 50 ml **735-968**  
reg. \$56  
**\$42**



fruity floral

**Live Out Loud Eau de Parfum**  
Strawberry, mimosa and vanilla.  
50 ml **142-000**  
reg. \$56  
**NOW \$31.49**



fruity floral

**Live Out Loud Solar Vibes  
Eau de Parfum**  
Bergamot, coconut water  
and fluffy marshmallow. 50 ml  
**835-822** reg. \$56  
**\$42**

love begins with you



soft floral

**Today Eau de Parfum**  
Magnolia blossoms, hibiscus  
petals and silk musk. 50 ml  
**490-855**  
reg. \$56  
**\$42**

Best of  
K-Beauty

amber floral

**Avon Moments  
Out On A Limb  
Eau de Toilette**  
Spicy cardamom,  
honeyed mimosa  
flower and  
powdery  
vanilla. 50 ml  
**196-112**  
reg. \$52  
**\$40.99**

amber floral

**Avon Moments  
Remember That Night  
Eau de Toilette**  
Sparkling grapefruit,  
opulent jasmine  
and amber. 50 ml  
**196-662**  
reg. \$52  
**\$40.99**

fruity floral

**Avon Moments  
Day Dreamer  
Eau de Toilette**  
Quince, dewy iris  
and cedarwood.  
50 ml **196-772**  
reg. \$52  
**\$40.99**



**Avon Moments  
Out On A Limb Body Wash**  
230 ml **196-442**  
reg. \$28  
**\$21.99**



**Avon Moments  
Remember That Night Body Wash**  
230 ml **196-768**  
reg. \$28  
**\$21.99**



**Avon Moments  
Day Dreamer Body Wash**  
230 ml **196-844**  
reg. \$28  
**\$21.99**





fruity floral

**Far Away Bali Eau de Parfum**  
Grapefruit, salted tuberose  
and amber. 50 ml **451-389**  
reg. \$42  
**\$31.99**



amber floral

**Far Away Eau de Parfum**  
Freesia, jasmine and amber.  
50 ml **685-712**  
reg. \$42  
**\$31.99**



fruity floral

**Far Away Infinity Eau de Parfum**  
Bergamot, jasmine sambac  
and sandalwood. 50 ml **888-301**  
reg. \$42  
**\$31.99**



amber floral

**Far Away Gold Eau de Parfum**  
Ylang-ylang, jasmine  
and vanilla. 50 ml **888-297**  
reg. \$42  
**\$31.99**

amber floral

**Far Away Moroccan Nights Eau de Parfum**  
50 ml 612-655  
reg. \$42  
**\$31.99**

Top: Violet Leaf, Powdery  
Orris, Heliotrope  
Mid: Blooming Moroccan  
Mimosa, White Tonka,  
Cardamom, Orange Flower  
Base: Creamy Cashmere  
Woods, Musk, Sandalwood

## The Allure Of Moroccan Nights



illuminate your life

fresh green floral

**Haiku Eau de Parfum**

Yuzu, muguet and  
blonde woods.  
50 ml **521-170**  
reg. \$42

**\$31.99**



woody floral

**Haiku Sunrise Eau de Parfum**

50 ml **091-500**  
reg. \$42

**\$31.99**

Top: Wild Fig, Watermelon,  
Madagascar Black Pepper  
Mid: Fresh Coconut Water,  
Sweet Rhubarb, Marine Accord  
Base: Warm Cedarwood,  
Cashmere Wood, Amber



fresh green floral

**Haiku Kyoto Flower Eau de Parfum**

Violet leaf, white peony and cotton musk.  
50 ml **144-352**  
reg. \$42

**\$31.99**



fresh green floral

**Haiku Reflection Eau de Parfum**

Water accord, acacia blossom  
and amber wood. 50 ml **617-657**  
reg. \$42

**\$31.99**



ANY TWO

FOR \$44

mix or match any two for discount to apply  
pages 70-74





woody floral

**Imari Amor Eau de Parfum**  
Black currant, orris and musk.  
50 ml 762-573 reg. \$42  
**\$31.99**



amber floral

**Imari Seduction Eau de Toilette**  
Wild berries, purple orchid and patchouli.  
50 ml 452-897 reg. \$42  
**\$31.99**

embrace your desire

amber floral  
**Imari Eau de Toilette**  
Bergamot, jasmine  
and amber. 50 ml 871-496  
reg. \$42  
**\$31.99**



amber floral  
**Rare Gold Eau de Parfum**  
Mandarin zest, ylang-ylang  
and amber. 50 ml 933-115  
reg. \$45  
**\$34.99**



soft floral

**Rare Pearls Eau de Parfum**  
Magnolia, white pepper and rosewood.  
50 ml 761-615  
reg. \$45  
**\$34.99**



fruity floral

**Rare Amethyst Eau de Parfum**  
Plum, violet and sandalwood.  
50 ml 933-062  
reg. \$45  
**\$34.99**



## layering essentials

**Far Away  
Body Scrub  
& Wash**  
200 ml  
143-360  
reg. \$21  
**NOW  
\$11.49**



**Far Away  
Hair and  
Body Mist**  
96 ml  
572-536  
reg. \$26  
**NOW \$15.49**



**Far Away  
Body Lotion**  
200 ml  
082-881  
reg. \$20  
**NOW \$9.99**



**Haiku  
Hair and Body Mist**  
96 ml 572-574  
reg. \$26  
**NOW \$15.49**



**Haiku  
Hand Cream**  
75 ml 364-808  
reg. \$13  
**\$9.99**



**Rare Pearls  
Hand Cream**  
75 ml  
364-827  
reg. \$13  
**\$9.99**



**Far Away  
Hand Cream**  
75 ml  
364-850  
reg. \$13  
**\$9.99**



**Rare Pearls  
Body Lotion**  
200 ml  
082-915  
reg. \$20  
**\$15.99**



**Rare Pearls  
Hair and Body  
Mist**  
96 ml  
572-851  
reg. \$26  
**NOW \$15.49**



**Haiku Body Lotion**  
200 ml 447-820  
reg. \$20  
**NOW \$11.99**



**Haiku  
Body Scrub  
& Wash**  
200 ml  
143-208  
reg. \$21  
**NOW  
\$11.49**







soft floral

**Soft Musk**  
Avon Classics Collection  
Eau de Cologne Spray  
Peach blossom, blonde woods  
and sheer musk. 50 ml **787-790**  
reg. \$28  
**\$22.99**



soft floral

**Dreamlife**  
Avon Classics Collection  
Eau de Cologne Spray  
Mimosa flower, rose and amber.  
50 ml **236-227**  
reg. \$28  
**\$22.99**



woody floral

**Night Magic**  
Avon Classics Collection  
Eau de Cologne Spray  
Neroli, jasmine and musk.  
50 ml **439-495**  
reg. \$28  
**\$22.99**

## scented softness

**Perfumed Skin Softener**  
Moisturizing formula leaves skin feeling soft  
and scented. 150 ml  
reg. \$10  
**\$6.99 each**

Avon Classics Candid 739-160  
Avon Classics Odyssey 739-762  
Imari 738-751  
Haiku 738-694

Avon Classics Timeless 739-155  
Avon Classics Sweet Honesty 740-246  
Avon Classics Night Magic 738-766  
For Away 049-246



amber floral

**Candid**  
Avon Classics Collection  
Eau de Cologne Spray  
Bergamot, tuberose and  
patchouli. 50 ml **038-295**  
reg. \$28  
**NOW \$14.99**



soft floral

**Odyssey**  
Avon Classics Collection  
Eau de Cologne Spray  
Tuberose, ylang-ylang and  
oakmoss. 50 ml **900-391**  
reg. \$28  
**\$22.99**



soft floral

**Sweet Honesty**  
Avon Classics Collection  
Eau de Cologne Spray  
Lily of the valley, soft rose and  
cedarwood. 50 ml **901-861**  
reg. \$28  
**\$22.99**



soft floral

**Timeless**  
Avon Classics Collection  
Eau de Cologne Spray  
Cardamom, jasmine and  
patchouli. 50 ml **037-930**  
reg. \$28  
**\$22.99**



soft floral

**Topaze**  
Avon Classics Collection  
Eau de Cologne Spray  
Jasmine, rose and sheer musk.  
50 ml **735-217**  
reg. \$28  
**\$22.99**



fresh green floral

**Free O<sub>2</sub>**  
Eau de Toilette  
White peach tea, honeysuckle  
and musk. 50 ml **490-840**  
reg. \$28  
**\$22.99**



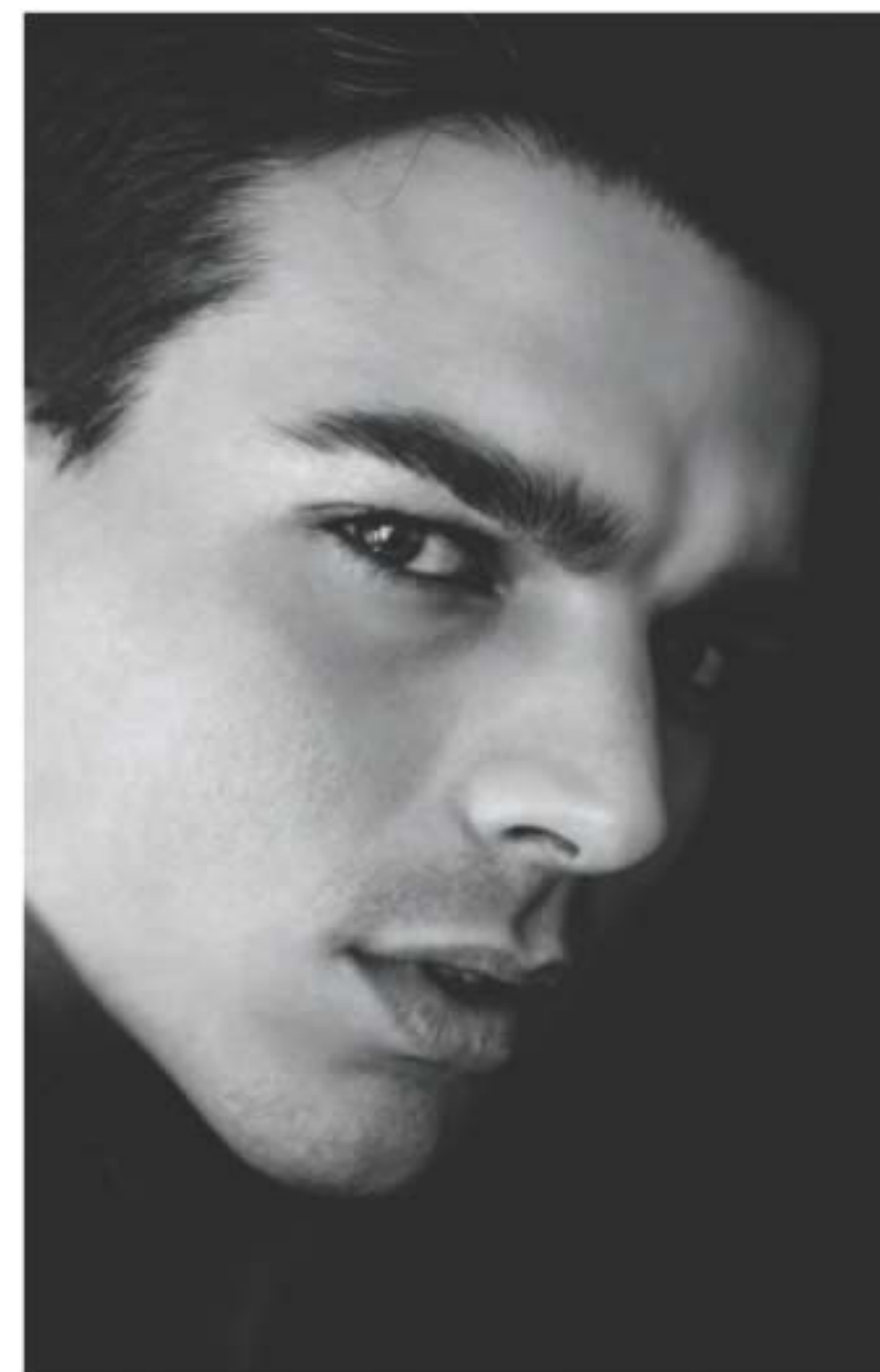


let your senses be your guide



fresh aromatic  
**Perceive Cologne**  
 100 ml 888-062  
 reg. \$45  
**\$34.99 \$25.99**

Top: Mandarin, Grapefruit, Sparkling Citrus  
 Mid: Geranium, Earthy Sage, Lavender  
 Base: Calming Cedarwood, Patchouli, Amber



fresh aromatic  
**Mesmerize Cologne**  
 Bergamot, cardamom and amber.  
 100 ml 871-458  
 reg. \$45  
**\$34.99 \$25.99**

captivate at a  
 single glance



woody fougère  
**Mesmerize Black Eau de Toilette**  
 Pepper, nutmeg and tonka bean.  
 100 ml 305-667  
 reg. \$45  
**\$34.99 \$25.99**





**Wild Country  
Hair and Body Wash**  
150 ml 215-188  
reg. \$13  
**\$9.99**



**Wild Country  
Aftershave Splash**  
118 ml 366-432  
reg. \$23  
**\$18.49**

fresh aromatic

**Wild Country  
Cologne**

Lavender, coriander seed and  
sandalwood. 88 ml 086-466  
reg. \$35

**\$27.99**

Packaging may vary.



cause a stir

woody fougère

**Black Suede  
The Blend  
Eau de Toilette**  
Aged rum-soaked  
casks, smoky  
leather and spicy  
woods. 100 ml

433-865

reg. \$42

**\$31.99**



fresh aromatic

**Black Suede Eau de Toilette**  
Bergamot, leather and oakmoss.  
100 ml 908-703  
reg. \$35  
**\$27.99**



**Black Suede  
Hair and Body Wash**  
150 ml 230-200  
reg. \$13  
**\$9.99**



# BATH & BODY

Pampering oils. Luxurious lotions. Revitalizing washes. We have so many ways to keep every body feeling soft, smooth and refreshed.

## NEW Skin So Soft + RADIANT RENEW with Retinol

Retinol formulas enhanced with skin-loving ingredients help leave your skin looking and feeling softer, smoother and rejuvenated.

### RETINOL

Known to help even the look of tone, brighten the look of complexion, reduce the appearance of wrinkles and improve the look of texture.

### BISABOLOL

Known to help skin appear firmer.



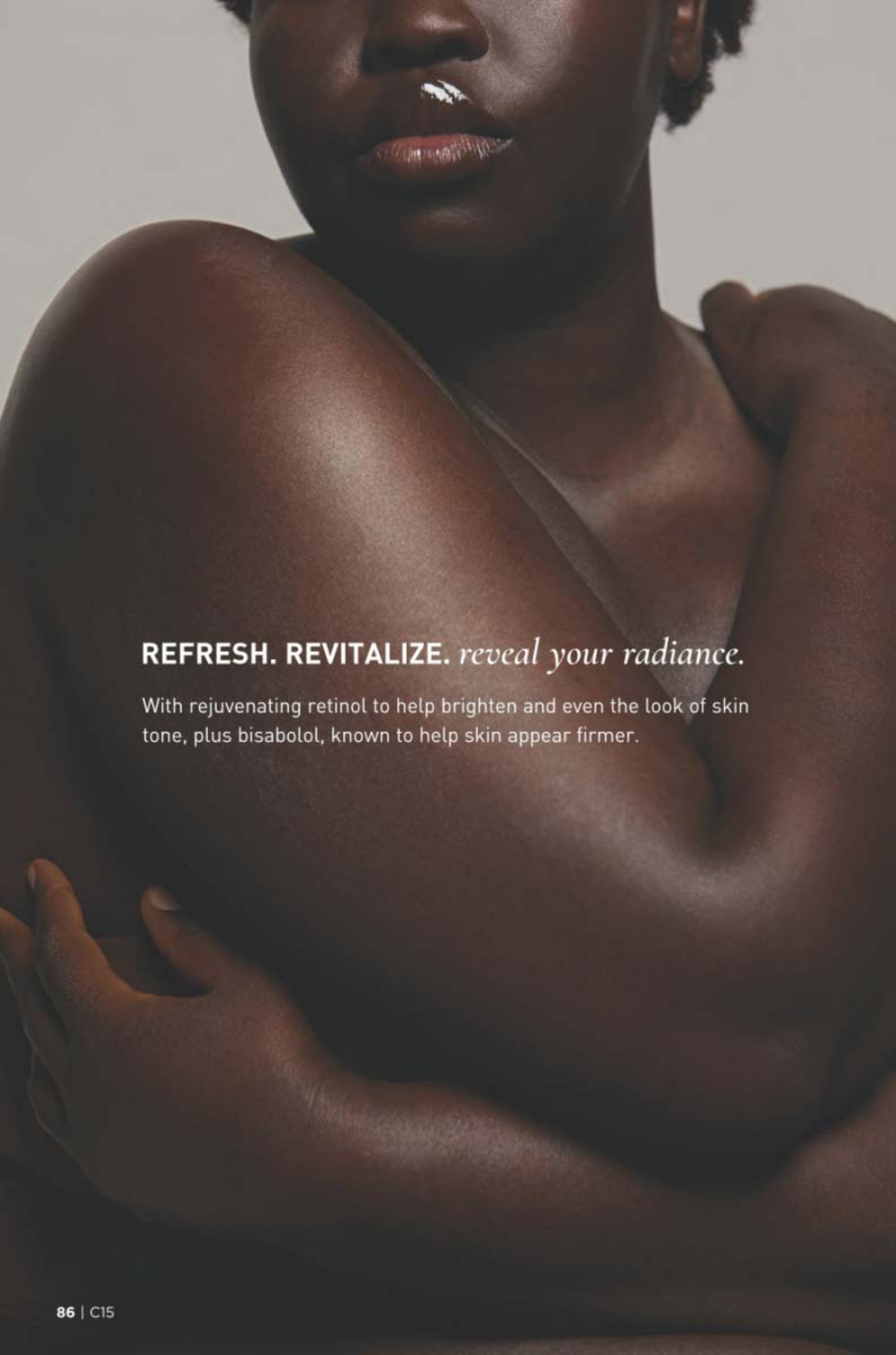
### **Bath & Body Oil**

Up to 48 hours of hydration. With squalane to help boost moisture. Skin looks soft and smooth with a radiant glow. Apply during or after your bath or shower. Lightly fragranced. 350 ml **051-955** reg. \$55

**\$43.49**

**+ FREE BRUSH** details page 88





**REFRESH. REVITALIZE.** *reveal your radiance.*

With rejuvenating retinol to help brighten and even the look of skin tone, plus bisabolol, known to help skin appear firmer.

**NEW Skin So Soft +  
RADIANT RENEW** with Retinol



**Shower Gel**

Infused with argan oil, known to be an abundant source of fatty acids, antioxidants and vitamin E. Skin looks softer, smoother and more radiant. Lightly fragranced. 236 ml **051-458** reg. \$33

**\$25.99**

**Body Lotion**

Up to 48 hours of moisturization. With hydrating hyaluronic acid to help skin appear more supple and radiant. Lightly fragranced. 350 ml **051-974** reg. \$37

**\$29.99**

**both for  
\$42**

**\$70 value**  
867-334

**+FREE BRUSH**  
details, page 88



# THE BEAUTY OF *Jojoba Oil*

This plant extract mimics skin's natural oils with vitamins and minerals essential to keeping skin feeling soft and smooth.

|  |  |  |
|--|--|--|
| <b>Gelled Body Oil</b><br>Dries to a silky finish.<br>200 ml<br>939-500<br>reg. \$23<br><b>\$17.99</b> | <b>Bath Oil Spray</b><br>Locks in hydration.<br>150 ml<br>441-692<br>reg. \$27<br><b>\$19.99</b> | <b>Bonus-Size Bath Oil</b><br>739 ml<br>663-480<br>reg. \$49<br><b>\$37.99</b> |
|--|--|--|



## SKIN SO SOFT ORIGINAL

**Body Lotion**  
350 ml 761-634  
reg. \$24  
**\$17.99**

**Bonus-Size Body Lotion**  
1 litre 825-351  
reg. \$37  
**\$25.49**

**Bonus-Size Shower Gel**  
1 litre 433-444  
reg. \$27  
**\$20.99**

**Shower Gel**  
150 ml 914-580  
reg. \$13  
**\$8.49**

**Bath Oil**  
Our bestselling bath oil. With jojoba oil. Fresh herbal scent.  
500 ml 439-040  
reg. \$35  
**\$27.99**



**Replenishing Hand Cream**  
100 ml 776-633 reg. \$11  
**\$8.49**

**Beauty Bar Soap**  
90 g 543-110 reg. \$7  
**\$5.49**



**FREE**  
**SHOWER BRUSH**  
WITH ANY  
\$42 SKIN SO SOFT  
PURCHASE,  
PAGES 85-97.  
\$16 VALUE.  
Limited quantities.  
Sold separately on page 116.





# THE BEAUTY OF *Argan Oil*

So precious, it's called "liquid gold."  
Packed with vitamin E, it helps to restore  
skin's lustre and keep it feeling irresistibly soft.



**Gelled Body Oil**  
Dries to a silky finish.  
200 ml 908-244  
reg. \$23  
**\$17.99**

**Bonus-Size Bath Oil**  
Hydrates during, or  
after, bath or shower.  
739 ml 862-920  
reg. \$49  
**\$37.99**



## SKIN SO SOFT SOFT & SENSUAL

**Bath Oil**  
With argan oil. Spicy floral scent.  
500 ml 504-614 reg. \$35  
**\$27.99**

**Shower Gel**  
Gently cleanses and hydrates.  
150 ml 914-710 reg. \$13  
**\$8.49**

**Bonus-Size Shower Gel**  
Gently cleanses and hydrates.  
1 litre 018-142 reg. \$27  
**\$20.99**

**Body Lotion**  
Up to 48 hours of moisturization.  
350 ml 400-720 reg. \$24  
**\$17.99**

**Replenishing Hand Cream**  
Up to 24 hours of moisturization.  
100 ml 779-924 reg. \$11  
**\$8.49**

**Bonus-Size Body Lotion**  
Up to 48 hours of moisturization.  
1 litre 825-643 reg. \$37  
**\$25.49**

**Beauty Bar Soap**  
Suitable for daily use.  
90 g 543-215 reg. \$7  
**\$5.49**





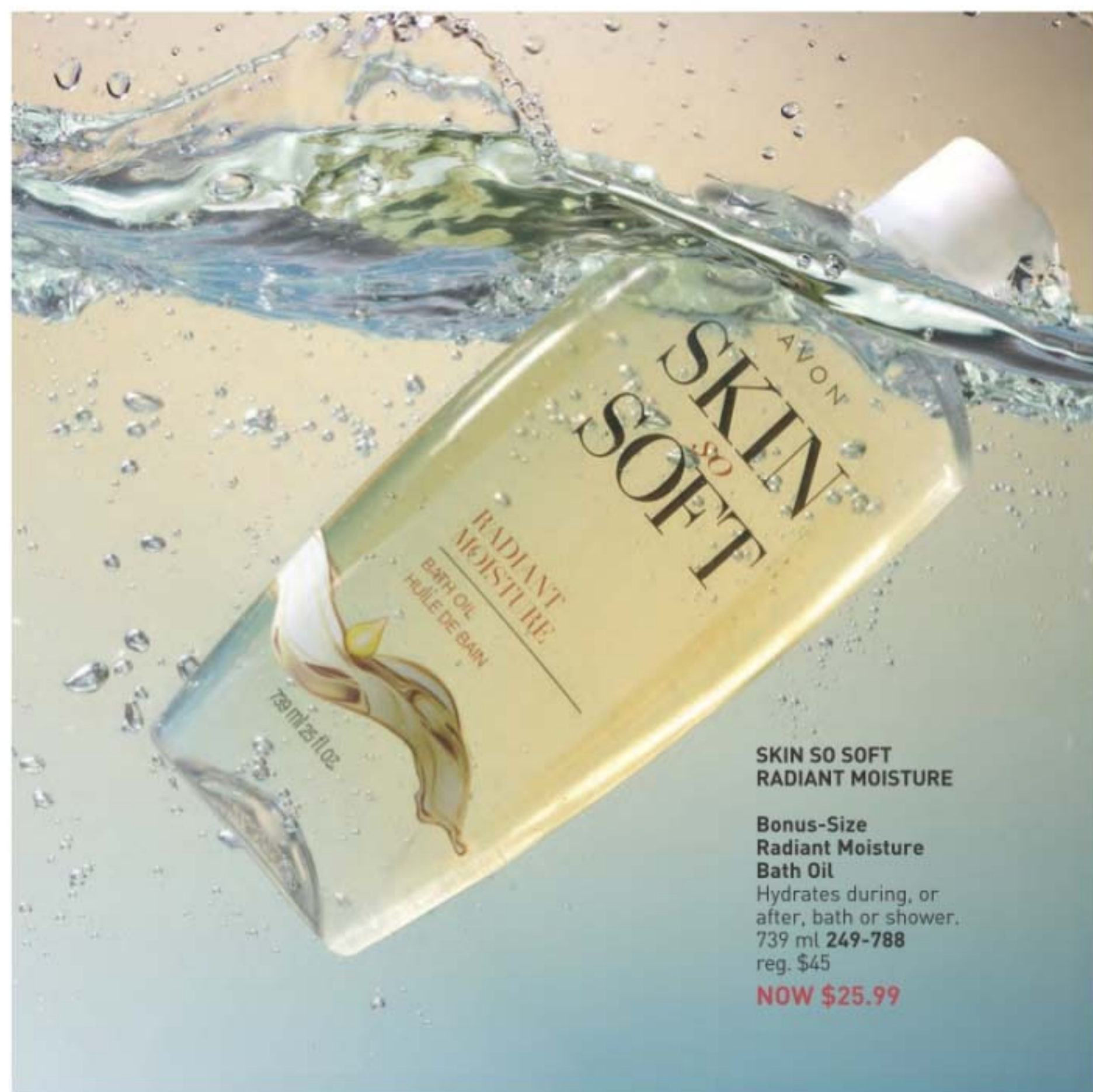
**Bonus-Size  
Shower Gel**  
Gently cleanses  
and hydrates.  
1 litre **433-922**  
reg. \$25  
**NOW \$15.49**



**Bonus-Size  
Body Lotion**  
Up to 48 hours  
of hydration.  
1 litre **620-956**  
reg. \$37  
**NOW \$18.99**



**Skin So Soft  
Botanical Essence Bath Oil**  
With nourishing botanical  
extracts. Uplifting herbal  
scent. 480 ml  
**027-253**  
reg. \$45  
**NOW \$25.99**



**SKIN SO SOFT  
RADIANT MOISTURE**

**Bonus-Size  
Radiant Moisture  
Bath Oil**  
Hydrates during, or  
after, bath or shower.  
739 ml **249-788**  
reg. \$45  
**NOW \$25.99**

**Replenishing  
Hand Cream**  
Up to 24 hours  
of hydration.  
100 ml **776-561**  
reg. \$11  
**NOW \$5.99**



**Skin So Soft  
Comforting Shea  
Bath Oil**  
With shea butter and oil.  
Vanilla, sandalwood and  
musk scent. 500 ml  
**015-071**  
reg. \$34  
**NOW \$18.49**



**Shower Gel**  
Gently cleanses  
and hydrates.  
150 ml **410-914**  
reg. \$13  
**NOW \$6.99**



**Skin So Soft  
Supreme Nourishment  
Enriching Coconut Oil  
Milk Lotion**  
Leaves skin feeling  
silky soft. 350 ml  
**419-835**  
reg. \$24  
**NOW \$14.99**





**SKIN SO SOFT PURE NATURE REVITALIZING BODY COLLECTION**  
Sustainable packaging\*  
Eucalyptus mint scent

**Body Cream**  
94% naturally derived.  
Smooth on moisturizing cream after bath or shower.  
355 ml **629-767**  
reg. \$31  
**\$23.99**

**Shower Gel**  
96% naturally derived.  
Richly lathering gel.  
355 ml **415-170**  
reg. \$31  
**\$23.99**

**In-Shower Body Lotion**  
95% naturally derived.  
Hydrating and softening lotion. Apply on wet skin after shower or bath.  
236 ml **633-857**  
reg. \$31  
**\$23.99**



**SKIN SO SOFT PURE NATURE HAIR COLLECTION**  
Sustainable packaging\*  
Eucalyptus mint scent

**Shampoo**  
With panthenol known to help moisturize, and citric acid, known to help hair look healthier. 355 ml **290-074**  
reg. \$32  
**\$24.99**

**Conditioner**  
With panthenol known to help moisturize and improve the look of elasticity. Leaves locks looking smooth, healthy and shiny. 355 ml **290-089**  
reg. \$32  
**\$24.99**

**Intense Hair Mask**  
With panthenol known to help moisturize and improve the look of elasticity for smoother, softer, stronger looking hair. 236 ml **290-131**  
reg. \$32  
**\$24.99**

\*Shampoo, Conditioner, Shower Gel and Body Cream bottles: 95% post-consumer recycled material, excluding cap. Hair Mask and Body Lotion tubes: 55% post-consumer recycled material, excluding cap.



## ooh la lavender



**SKIN SO SOFT CALMING LAVENDER**

Infused with a superior blend of **lavender** and **chamomile** essential oils, plus **jasmine**, for skin that feels softer and smoother with a healthy looking glow. **Tranquil lavender scent.**

**Body & Bath Oil**  
With a luxe blend of lavender and chamomile essential oils, plus jasmine extract, this antioxidant-infused bath oil leaves skin feeling soft and supple. 350 ml **511-354**  
reg. \$45  
**\$34.99**

**Sugar Scrub**  
Exfoliating scrub enhanced with jasmine extract and a relaxing blend of essential oils and allantoin. Skin looks and feels moisturized and smoother. 255 g **512-418**  
reg. \$28  
**\$21.99**

**Body Lotion**  
With sunflower and rosehip seed oils to help skin feel softer and smoother, shea butter to lock in moisture; plus hyaluronic acid and aloe. Contains jasmine essential oil and resveratrol to help keep skin looking supple and youthful. 350 ml **511-995**  
reg. \$31  
**\$23.99**



**Skin So Soft  
Fresh & Smooth  
Facial Hair  
Removal Cream**  
Easily removes  
unwanted facial  
hair. 30 ml  
562-543  
reg. \$19  
**\$13.99**



**Skin So Soft  
Fresh & Smooth  
Body Hair  
Removal Cream**  
Easily removes  
unwanted body  
hair. 125 ml  
562-467  
reg. \$14.50  
**\$11.49**



**Foaming  
Cleanser**  
150 ml 041-647  
reg. \$24  
**NOW \$13.99**



**Soothing  
Gel**  
180 ml 040-636  
reg. \$29  
**NOW \$16.99**



**Exfoliating  
Body Wash**  
300 ml 041-556  
reg. \$28  
**NOW \$16.99**



## facial bar soaps

With Skin So Soft signature oils  
and other skin pampering ingredients.

**Best of  
K-Beauty**



**Skin So Soft Facial Bar  
Hyaluronic Acid\*  
& Niacinamide†**  
Enriches skin with  
moisture. 90 g  
364-573  
reg. \$9  
**\$6.99**

**Skin So Soft Facial Bar  
Salicylic\* & Lactic\*\* Acids**  
Gently exfoliates to help  
skin look softer and  
luxuriously smooth. 90 g  
364-569  
reg. \$9  
**\$6.99**

**Skin So Soft Facial Bar  
Retinol\*\* & Vitamin C†**  
Helps even the look  
of tone, brighten  
and enhance the  
appearance of skin  
clarity. 90 g  
364-607  
reg. \$9  
**\$6.99**

**Skin So Soft Facial Bar  
Collagen\*\* & Goat Milk\*\*\***  
Deeply hydrates. 90 g  
364-626  
reg. \$9  
**\$6.99**

\*0.001%, \*\*0.0009%, †0.0001%, ††0.00001%, \*\*\*0.007%

## Skin So Soft for ACNE-PRONE SKIN

Developed for all skin types with  
gently exfoliating salicylic acid.  
Suitable for daily use. Formulated  
without synthetic fragrances.





**Bonus-Size Moisture Therapy Body Lotion**1 litre  
reg. \$35**\$27.99 each****Daily Skin Defense**Helps restore moisture to everyday dry skin. **725-793****Calming Relief**Relieves dry, itchy skin. Fragrance free. **639-802****Intensive Healing & Repair**Up to 72 hours of moisture for extra-dry skin. Fragrance-free. **639-745****Moisture Therapy Intensive Healing & Repair Extra Strength Cream**Up to 24 hours of moisturization. Fragrance-free. 150 g **224-982**  
reg. \$13**\$9.99****Moisture Therapy Intensive Healing & Repair Hand Cream**For extremely dry skin. Fragrance-free. 125 ml **845-982**  
reg. \$12**\$8.49****Moisture Therapy Balance + Soothe Body Wash**Softens while it gently cleanses. 390 ml **438-078**  
reg. \$33**NOW \$19.49****Moisture Therapy Balance + Soothe Body Lotion**Replenishes moisture to leave skin softer and healthier looking. 390 ml **438-082**  
reg. \$35**NOW \$21**

## rescue extra-dry skin

**Moisture Therapy Intensive Healing & Repair All Over Rescue Balm Stick**Up to 24 hours of moisturization in a convenient, mess-free, glide-on stick. Fragrance-free. Apply anywhere on body, face and even lips. 18 g **470-004**  
reg. \$25**\$19.99****Moisture Therapy Intensive Healing & Repair All Over Rescue Balm**Up to 24 hours of moisturization for extra-dry skin. With avocado oil and shea butter. Apply anywhere on body, face and even lips to seal in moisture and keep skin looking healthy. Fragrance-free. 75 ml **419-840**  
reg. \$21**\$16.99**



**Senses Aquatic Breeze**  
Inhale the fresh and cool, invigorating ocean breeze with an energizing blend of mandarin zest, bergamot peel, lotus flower and driftwood.

**Bubble Bath**  
700 ml  
**746-388**  
reg. \$23  
**\$18.49**

**Body Scrub**  
With apricot seed powder.  
240 g  
**746-426**  
reg. \$34  
**\$26.49**



**Senses Sun-Kissed Coconut**  
Escape to the tropics with a creamy, sun-soaked splash of coconut water, a whiff of warm vanilla, a dash of dreamy jasmine, ylang-ylang and a sprinkle of sea salt.

**Bubble Bath**  
700 ml  
**746-369**  
reg. \$23  
**\$18.49**

**Body Scrub**  
With apricot seed powder.  
240 g  
**746-407**  
reg. \$34  
**\$26.49**



**Senses Caramel Sol**  
Indulge in a day at the beach under the Mediterranean sun with rich and decadent notes of velvety caramel infused with warm golden rays of vanilla, a sweet sip of almond and coconut milk, and a zesty mandarin twist.

**Bubble Bath**  
700 ml  
**746-373**  
reg. \$23  
**\$18.49**

**Body Scrub**  
With apricot seed powder.  
240 g  
**746-411**  
reg. \$34  
**\$26.49**



**Senses Strawberry Sunset**  
Sail away to a Caribbean summer night with the sweet and refreshing blend of luscious strawberries kissed by the warmth of the setting sun, a hint of pink magnolia and crushed mint.

**Bubble Bath**  
700 ml  
**746-354**  
reg. \$23  
**\$18.49**

**Body Scrub**  
With apricot seed powder.  
240 g  
**746-392**  
reg. \$34  
**\$26.49**



## invigorate the senses

Cleanse all over with your favourite refreshing scents.

**Senses  
Shower Gel  
Blushing  
Cherry  
Blossom**  
150 ml  
921-847  
reg. \$12  
**\$8.49**

**Senses  
Shower Gel  
Juicy Pomegranate  
& Mango**  
150 ml  
248-155  
reg. \$12  
**\$8.49**



**Senses Shower Gel  
Fresh Cucumber & Melon**  
150 ml 400-716  
reg. \$12  
**\$8.49**



**Senses Shower Gel  
Silky Vanilla**  
150 ml 248-140  
reg. \$12  
**\$8.49**



**Senses Lip Balm**  
4.1 g  
Strawberry 554-219  
Cherry 554-223  
reg. \$5  
**\$3.49 each**

## soak away stress

**Senses  
Bubble Bath**  
700 ml  
reg. \$23  
**\$18.49 each**



Cherry Blossom  
929-211



Vanilla Cream  
875-669



Cucumber Melon  
688-950



Sensitive Skin  
875-400



Orange & Honeysuckle  
633-952



Endless Ocean  
809-075

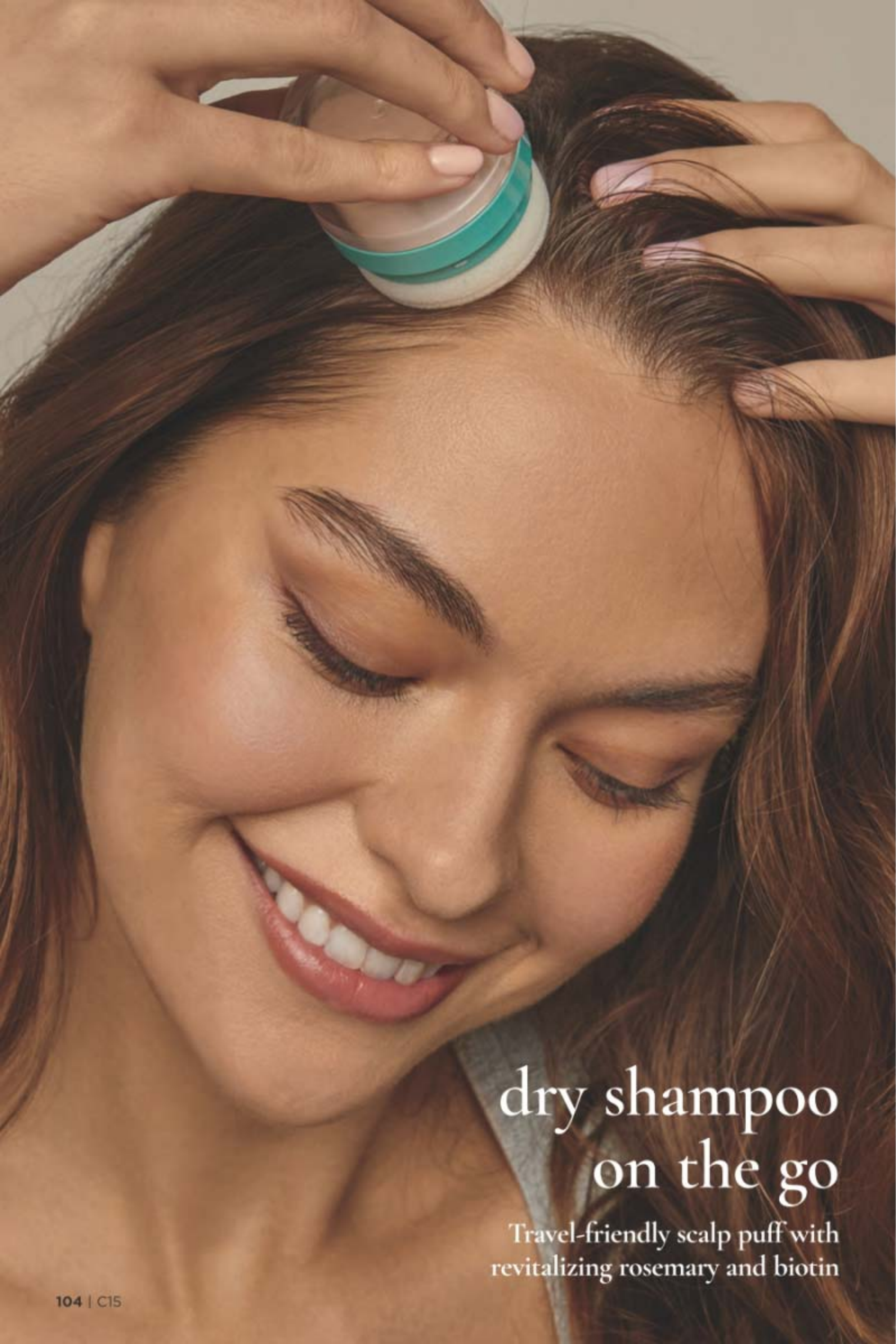


Lily & Honeysuckle Blossom  
805-524



Lavender Garden  
381-799





## dry shampoo on the go

Travel-friendly scalp puff with  
revitalizing rosemary and biotin

**NEW**

### Organist Rosemary Mint Dry Shampoo

Easy to use, mess-free puff applicator and fast-acting formula with a revitalizing blend of rosemary mint and biotin helps absorb excess oil on scalp and at the roots so hair looks clean and fresh between washes. Perfect for on the go. Formulated without sulfates and parabens. 8 g

078-787

reg. \$36

**\$28.99**



BEFORE



AFTER



Images are simulations for illustrative purposes only.  
Individual results may vary.

dry shampoo with  
hair strengthening  
oil

**both for  
\$41.99**

180-891



**Rosemary Mint  
Hair Strengthening Oil**  
60 ml  
sold separately  
on page 107

dry shampoo with  
strengthening  
shampoo

**both for  
\$37.49**

180-910



**Rosemary Mint  
Strengthening Shampoo**  
500 ml  
sold separately  
on page 106



## Organist Rosemary + Mint | *revitalizing*

- helps hydrate the scalp
- with the natural goodness of rosemary

healthy-looking hair starts at the scalp

### CLEANSE

With rosemary and biotin, to help keep your scalp and hair looking healthy. Refreshing, cooling peppermint helps your scalp feel revitalized.

500 ml

**Shampoo**

**542-974**

**Conditioner**

**542-993**

reg. \$32

**\$24.99 each**

### REVITALIZE

**Scalp**

**Strengthening Tonic**

With rosemary, mint, biotin and caffeine. Scalp feels revitalized with a cooling sensation. Hair looks fuller, thicker and stronger. 150 ml

**544-427**

reg. \$36

**\$28.99**



rejuvenate hair from the roots

### Hair Strengthening Oil

2-in-1 daily-use oil for hair and scalp. With essential oils, 99% derived from plants, plus biotin. Rosemary and mint blend. Hair feels fortified and refreshed. 60 ml

**\$28.99**

### FOR HAIR & BODY

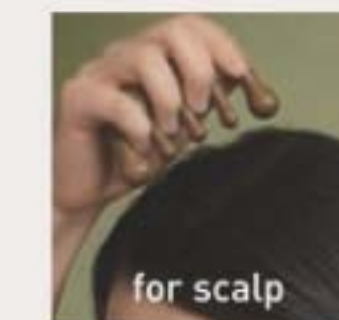
#### Gua Sha Scalp Massager

For scalp, neck and body. Helps promote circulation for hair that looks stronger and healthier. Wood.

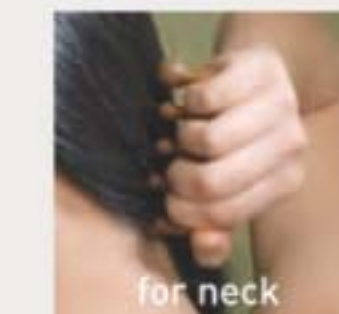
**542-960**

reg. \$36

**\$28.99**



for scalp



for neck

support your body's moisture barrier

#### Body Wash

Invigorate your senses. Formulated with AHA/BHA/PHA and panthenol. 500 ml

**544-446**

reg. \$32

**\$24.99**





## Organist Rice Water | *hydrating*

- a time-honoured Asian beauty secret
- rich in amino acids, vitamins B and E, and minerals
- helps reduce breakage and split ends to smooth hair and improve shine and manageability



add moisture to dry, damaged hair for a healthy-looking shine

### CLEANSE

#### Damage Care Shampoo

With biotin, ceramide, protein and 17 amino acids to revitalize dry strands, helping to restore strength and resilience. Enriching rice water helps transform dry hair into a silky mane. 500 ml **381-803** reg. \$32

**\$24.99**

### HYDRATE

#### Damage Care Treatment

Perfect for hair in need of hydration. Biotin, protein and 17 amino acids help revitalize dry strands from within. Hyaluronic acid and collagen help smooth hair for resilience and softness. 200 ml **381-860** reg. \$32

**\$24.99**



jasmine  
and  
freesia  
scent

Oil Layer

Essence Layer



BEFORE



AFTER

hydrate hair with an uplifting fragrance mist

#### Moisture Replenish Hair Mist

2-layer mist. A hydrating essence layer plus 5-plant oil layer, including jojoba and argan oils, for deep moisturization. Rice water, biotin, ceramide, protein and amino acids help revitalize, nourish and soften dry, damaged hair. Shake well before use. Use on damp or dry hair. Fresh floral scent. 80 ml

**381-985**  
reg. \$36

**\$28.99**

Images show results using Organist Rice Water Moisture Replenish Hair Mist as directed. Mist was applied multiple times on dry hair. Minimal styling for consistency. Results may vary.

### FOR BODY

with antioxidants ideal for helping to moisturize dry skin

### CLEANSE

#### Nourishing Body Wash

With soap derived from olive oil. Contains panthenol and hyaluronic acid. Helps skin appear soft and moisturized. 500 ml

**382-097**  
reg. \$27

**\$20.99**

### HYDRATE

#### Nourishing Body Milk

With plant-derived moisturizer and plant derived oil (squalane) to help hydrate and nourish dry skin. Easily absorbed. Nongreasy. 300 ml

**382-336**  
reg. \$27

**\$20.99**





**Scalp Tonic**

Leave-on scalp tonic made with a blend of 10 natural herbs. Revitalizes the scalp. 150 ml  
**482-721**  
 reg. \$34  
**\$26.99**

**Clarifying Water Treatment**

Infused with collagen and hyaluronic acid. Formulated to clarify and help locks look naturally soft and flowing instantly with a healthy looking shine. 180 ml **482-717**  
 reg. \$27  
**\$20.99**

**APPLE CIDER VINEGAR FOR HAIR****Clarifying Shampoo**

Helps clarify and nourish scalp and hair for a healthy-looking shine while it cleanses. 500 ml  
**482-650**  
 reg. \$32  
**\$24.99**

**Clarifying Conditioner**

Helps clarify and nourish scalp and hair for a healthy-looking shine. 500 ml  
**482-664**  
 reg. \$32  
**\$24.99**

**Organist Apple Cider Vinegar | *clarifying***

Crafted from a curated selection of ingredients, including apple cider vinegar extract, ginger, menthol and biotin. Formulated without silicone oil or sulfates.

**APPLE CIDER VINEGAR FOR BODY****Body Wash**

Blends apple cider vinegar extract with panthenol so skin feels refreshed and nourished. 500 ml  
**482-740**  
 reg. \$27  
**\$20.99**

**Exfoliating Body Scrub**

With panthenol and AHA/BHA/PHA, gently exfoliates dead skin cells to help skin look and feel refreshed all over. 200 ml **482-846**  
 reg. \$27  
**\$20.99**





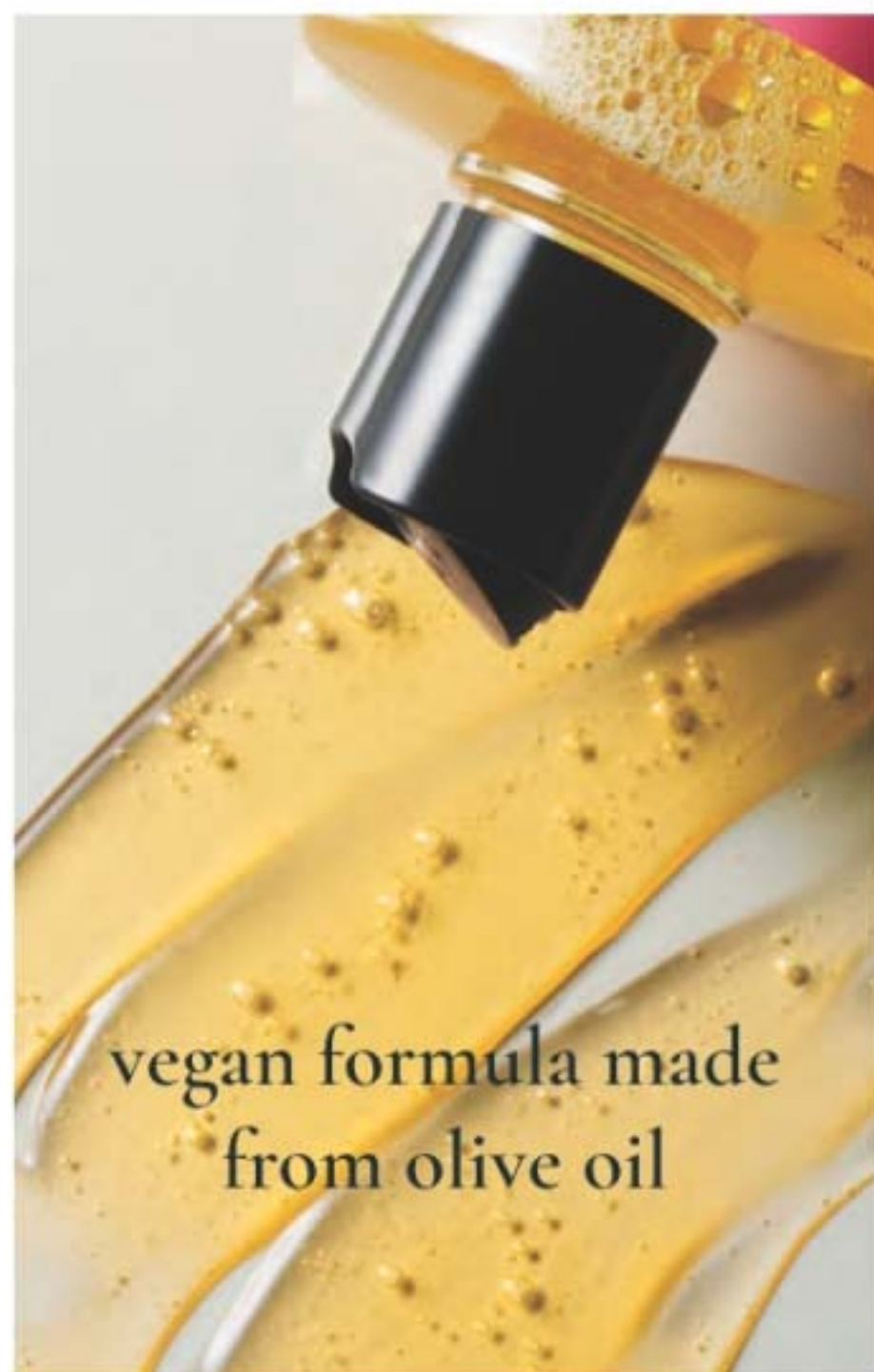


# Organist

everyday beauty  
inspired by nature

## Botanical Castile Soap

Daily vegan washes for face and body infused with soap made from olive oil, and formulated without parabens, silicone oil or sulfates. Leaves skin feeling refreshed, revitalized and luxuriously moisturized while it cleanses.



vegan formula made  
from olive oil



## revitalize

### FOR OILY SKIN

**Tea Tree & AHA BHA**  
Helps target excess oil as it deeply cleanses and refreshes. Fresh herbal scent. 480 ml  
**348-115**  
reg. \$27  
**\$20.99**

## moisturize

### FOR DRY SKIN

**Rose Water & Hyaluronic Acid**  
Low-pH formula helps replenish moisture. Crisp floral scent. 480 ml  
**348-100**  
reg. \$27  
**\$20.99**

**NEW**

## relax

### FOR NORMAL SKIN

**Lavender Oil & Vitamin E**  
Helps skin feel refreshed while promoting a relaxing experience. Lavender scent. 480 ml  
**048-398**  
reg. \$27  
**\$20.99**



Best of  
K-Beauty



Best of  
K-Beauty

AN ORAL CARE  
INNOVATION:

## HIMALAYA PINK SALT

For a healthy, whiter,  
brighter looking smile.  
Enriched with Himalayan  
Pink Salt.

### Himalaya Pink Salt Purple Whitening Toothbrush

Purple colour fades  
as bristles wear,  
reminding you to  
replace. Clinically  
tested to remove 4X  
more interdental  
plaque.\* Bristles  
with 2X the elasticity  
clean narrow gaps  
between teeth and  
the gum line.

383-165  
reg. \$9

**\$6.99**

\*Compared to LG H&H regular  
toothbrush with soft bristles.



### Himalaya Pink Salt Whitening Toothbrush (Medium)

Bristles are infused  
with Himalayan pink  
salt for effective  
cleansing and a gentle  
brightening effect.  
Medium size brush.  
High tension bristles  
penetrate narrow gaps.

729-359  
reg. \$9

**\$6.99**

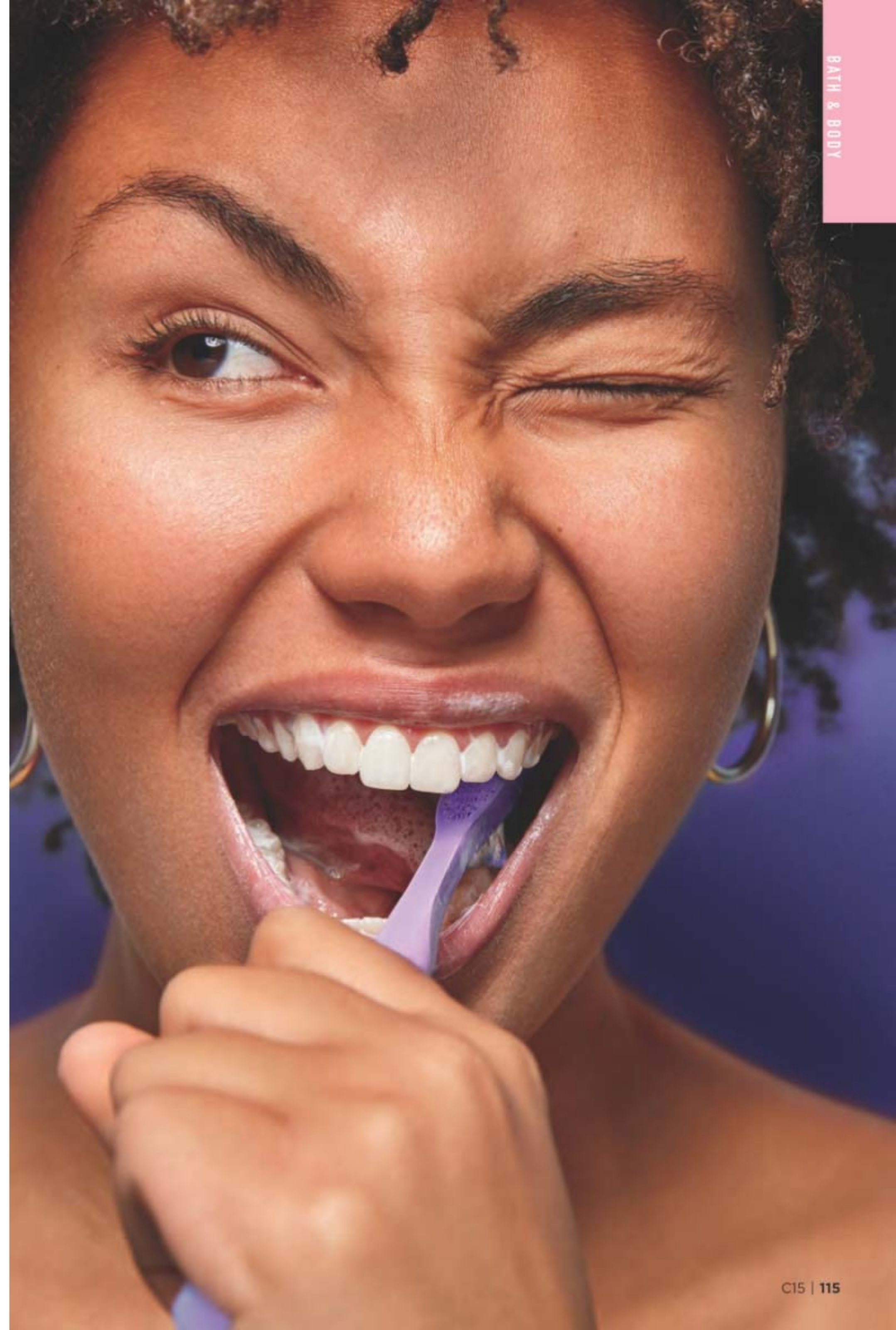


### Himalaya Pink Salt Intensive Whitening Toothbrush (Large)

Bristles are infused  
with Himalayan pink  
salt for effective  
cleansing and a  
gentle brightening  
effect. Large size  
brush. High tension  
bristles penetrate  
narrow gaps.

035-812  
reg. \$9

**\$6.99**





**Véilment Natural Spa  
Glacial Water Cooling  
Body Scrub & Cleanser**  
400 ml 573-480  
reg. \$25  
**NOW \$14.49**



**Véilment Natural Spa  
Dead Sea Salt  
Body Scrub & Cleanser**  
400 ml 781-992  
reg. \$25  
**NOW \$14.49**



**Foot Works  
Intensive Moisture  
Foot Cream**  
Suitable for diabetics.  
75 ml 069-016  
reg. \$17  
**\$13.99**



**Foot Works  
Intensive  
Callus Cream**  
Softens hard calluses.  
90 g 851-310  
reg. \$17  
**\$13.99**



**Véilment Natural Spa  
Black Rose  
Body Scrub & Cleanser**  
400 ml 707-969  
reg. \$25  
**NOW \$14.49**



**Véilment Natural Spa  
Himalaya Pink Salt  
Exfoliating Soap**  
150 g 260-440  
reg. \$12  
**NOW \$5.99**



**Foot Works  
Deodorizing Spray**  
Can also be used in  
footwear. 100 g  
313-236  
reg. \$21  
**\$16.99**



**SOLE MATES**  
step up your routine to help restore  
healthy looking feet with Foot Works



#### Avon Shower Brush

Long handle to reach  
down back. Brush helps  
cleanse. Back of brush  
features massage  
nubs. Non-slip, comfort  
handle has a convenient  
hanging loop.

**904-727**  
reg. \$16  
**\$11.99**

#### Exfoliation Mitt

Microfibre jacquard with  
nylon/spandex cuff. 439-734  
reg. \$20

**\$15.99**



#### 4 in 1:

- Fine grain file
- Metal file
- Pumice
- Brush

**Foot Works  
Pedicure Tool**  
592-712  
reg. \$17  
**\$13.99**



Kit includes:  
• Nail clipper  
• Toenail clipper  
• Scissors  
• Small nail file  
• Cuticle pusher

**Foot Works Pedicure Kit**  
Case, 9 cm L x 12 cm W.  
121-029  
reg. \$21  
**\$16.99 the kit**







Rare Pearls  
174-373



Night Magic  
Evening Musk  
174-718



Sweet Honesty  
326-008



Timeless  
326-012



Feelin' Fresh  
Original  
325-805



Skin So Soft  
Soft & Sensual  
326-141



Far Away  
174-369



Haiku  
326-247



Imari  
765-534



Rare Gold  
174-407



Cool Confidence  
Original  
325-991



Cool Confidence  
Baby Powder  
765-352



On Duty Sport  
325-972



On Duty  
Unscented  
173-802



On Duty  
Original  
325-638



Black Suede  
326-323



Mesmerize  
326-290



Wild Country  
326-027

**Roll-On  
Anti-Perspirant  
Deodorant**  
75 ml  
reg. \$9  
**\$7.49 each**



Imari Essence  
568-890



Far Away Essence  
568-852



Skin So Soft  
Soft & Sensual Essence  
326-338



Feelin' Fresh Essence  
174-957



On Duty Essence  
175-312



On Duty Sport Essence  
569-146

**Roll-On  
Anti-Perspirant  
Deodorant**  
50 ml  
reg. \$7.25  
**\$5.99 each**

**BUY ONE  
GET ONE  
FREE**

mix or match any 2  
for discount to apply,  
50 ml only



**Perfumed Liquid  
Deodorant**  
Soft floral scent.  
Aluminum-free.  
Fast-drying.  
Easy fingertip  
application.  
59 ml **889-915**  
reg. \$14  
**\$10.99**



**Avon Microbiome  
by Reach® Hygiene  
Deodorant Stick**  
Floral citrus scent.  
Aluminum-free.  
24-hour odour  
protection. 75 g  
**524-528**  
reg. \$22  
**\$17.99**



# make the great outdoors yours



## SKIN SO SOFT BUG GUARD PLUS ICARIDIN

- HELPS REPEL MOSQUITOES FOR UP TO 5 HOURS
- HELPS REPEL DEER TICKS FOR UP TO 7 HOURS
- SAFE FOR THE ENTIRE FAMILY
- NON-GREASY
- QUICK DRYING



## FAMILY SIZE

Insect Repellent  
Spray II  
236 ml  
510-195  
reg. \$35.25  
**\$25.99**

## INDIVIDUAL SIZE

Insect Repellent  
Spray II  
118 ml  
510-161  
reg. \$25.99  
**\$17.99**



## EASY TRAVEL TOWELETTES

Insect Repellent  
Towelettes  
23 cm L x 14 cm W.  
10.9 g  
942-690  
reg. \$22  
**\$17.99 pack of 8**





CHI's unique blend includes aloe vera, pomegranate, hibiscus and other ingredients for healthy looking hair.

**CHI® Essentials**  
**Moisturizing Conditioner**  
355 ml 589-409  
reg. \$32

**NOW \$18.49**

**CHI® Essentials**  
**Replenishing Shampoo**  
355 ml 589-140  
reg. \$32

**NOW \$18.49**



**Elastine**  
**Salon de Color**  
**Color Vibe**  
**Purple Shampoo**  
250 ml 436-109  
reg. \$27

**NOW \$15.49**



**Elastine**  
**Salon de Color**  
**Color Vibe**  
**Purple Conditioner**  
250 ml 436-955  
reg. \$27

**NOW \$15.49**



**Avon**  
**Blow-Dry**  
**Round Hairbrush**  
504-800  
reg. \$28  
**\$22.99**



**Avon**  
**Detangling Comb**  
504-820  
reg. \$13  
**\$8.99**



**CHI® Essentials**  
**Revive Keratin +**  
**Bonding**  
**Restoring**  
**Shampoo**  
355 ml 451-192  
reg. \$35  
**NOW \$20.99**



**Avon**  
**Compact**  
**Hairbrush**  
504-743  
reg. \$16  
**\$11.99**



**Avon**  
**Detangling**  
**Hairbrush**  
504-815  
reg. \$20  
**\$15.99**

**FREE**  
with any  
2 hair care  
purchases  
pages 122 to 127\*

\*Purchase of Avon Detangling Hairbrush does not count toward any 2 purchases.







## SALON-INSPIRED FORMULAS

**Root Touch-Up**  
Instantly covers up  
roots and bare spots.  
With black bean and  
ginseng. Built-in  
mirror, 7 g  
reg. \$28

**\$22.99 each**

|   |   |
|---|---|
|  |  |
| Reddish<br>Brown<br>243-627   | Light<br>Brown<br>244-642   |
|  |  |
| Dark Brown<br>245-213   | Black<br>245-251  |



**Advance Techniques  
Daily Shine  
2-in-1 Shampoo  
& Conditioner**  
Leaves hair feeling  
clean, conditioned  
and frizz-free. 350 ml  
553-413  
reg. \$27  
**\$20.99**



**Elastine  
PropoliThera  
Hair Deep Conditioning  
Treatment Cap**  
Single-use cap.  
053-761  
reg. \$13  
**\$9.99**



**AVON  
DETANGLING  
HAIRBRUSH**  
**FREE**  
with any  
2 hair care  
purchases  
pages 122-127  
details page 123



**Elastine  
PropoliThera  
Damage Repair  
Shampoo**  
500 ml  
053-082  
reg. \$27  
**NOW \$16.99**



**Elastine  
PropoliThera  
Damage Repair  
Conditioner**  
500 ml  
638-681  
reg. \$27  
**NOW \$16.99**



**Best of  
K-Beauty**

**Elastine  
PropoliThera  
Hair Oil Serum**  
170 ml  
895-190  
reg. \$31  
**NOW \$17.49**



**Elastine  
PropoliThera  
Serum  
Treatment**  
230 ml  
359-821  
reg. \$31  
**\$25.99**







**Dr. Groot Microbiome Scalp Fortifying Hair-Thickening Shampoo**  
With coconut oil, cleanses as it helps moisturize dry scalp and hair. 400 ml  
778-014  
reg. \$49  
**\$41**



**Dr. Groot Premium Scalp Cleansing Brush**  
Helps promote cleansing of residue while massaging to reinvigorate scalp as it helps to stimulate circulation. 065-776  
reg. \$28  
**\$22**



**Dr. Groot Microbiome Scalp Fortifying Serum Treatment**  
Moisturizes and helps support healthy looking hair. 200 ml  
782-271  
reg. \$49  
**\$41**

**AVON  
DETANGLING  
HAIRBRUSH  
FREE**  
with any  
2 hair care  
purchases  
pages 122-127  
details page 123



**GREAT HAIR STARTS  
WITH SCALP CARE**



one...  
and  
done

# NEW

## ❖ Drawstring Dress

Dusk blue V-neck dress with adjustable drawstring at waist. ¾-length sleeves with elastic cuff. Ladder lace trim at sleeve seam. 100% polyester. Centre back length: 98 cm on M; 99 cm on 1X. Machine wash, line dry. XS(0-2) 103-180  
S(4-6) 103-209  
M(8-10) 103-251  
L(12-14) 103-285  
XL(16) 103-395  
1X(18W-20W) 103-687  
2X(22W-24W) 103-759  
3X(26W-28W) 103-797  
reg. \$74.99

**\$59.99**

Blue Modern Mosaic Collection  
sold on page 147.

ADJUSTABLE  
DRAWSTRING  
at waist

LADDER  
LACE  
trim at  
sleeve  
seams



## ❖ Metallic Phone Case

Distressed golden metallic phone case with adjustable crossbody strap and zipper closure. Includes outside and inside slotted pocket. 11 cm L x 5 cm W x 18 cm H. Strap: 69 cm L fully extended. Man-made materials. 046-983  
reg. \$48.99

**\$36.99**



## metallics in the mix

### Beaded Bloom Bag Charm

Semi-precious stones with glass and pearlesque beads. 11 cm L.

Happy/Lapis 103-801

Love/Purple Amethyst 103-854

Luck/Green Aventurine 103-835  
reg. \$18.99

**\$14.99 each**

### ❖ Low Heel Mule

Black open-toe sandal with golden metallic block heel, 5 cm H. Man-made materials.

6 102-968 7 103-031 8 103-050  
9 103-065 10 103-084 11 103-099  
reg. \$74.99

**\$59.99**





**ALL NEW**❖ **Shadow Stripe Shirt**

Smoke grey stripe satin shirt with collar, button front, rounded hem and long sleeves with buttoned cuff. Polyester/spandex. Centre back length: 69 cm on M; 71 cm on 1X. Machine wash, line dry.

XS(0-2) **103-945**S(4-6) **104-019**M(8-10) **104-038**L(12-14) **104-042**XL(16) **104-239**1X(18W-20W) **104-372**2X(22W-24W) **104-391**3X(26W-28W) **104-698**

reg. \$66.99

**\$51.99**❖ **Front Seam Pant**

Smoke grey pull-on pants with side seam pockets and straight leg fit with front seam detail. Flat front waist has an elastic back. Rayon/nylon/spandex. Inseam: 74 cm all sizes. Machine wash, dry flat.

XS(0-2) **104-717**S(4-6) **104-740**M(8-10) **104-755**L(12-14) **104-831**XL(16) **104-870**1X(18W-20W) **104-884**2X(22W-24W) **104-956**3X(26W-28W) **105-020**

reg. \$84.99

**\$66.99**

SATIN STRIPE  
button-down  
with a classic  
collar

bring on  
the greys

FRONT  
SEAM  
detail and  
straight leg fit

**NEW**❖ **Simple Ballet Flat**

Black ballet flat with soft square toe and elastic bow. Padded insole and rubber outsole. Man-made materials.

6 **105-034**7 **105-144**8 **105-398**9 **105-417**10 **105-436**11 **105-675**

reg. \$54.99

**\$41.99**

CLASSIC  
BALLET  
FLAT  
with bow  
detail

chic & classic

**NEW**❖ **Lace Foot Covers**

No-show, stretch lace foot covers with gel grip around top. Lightweight fabric provides ventilation. Upper: nylon. Sole: cotton/spandex. One size. Machine wash and dry.

Black **106-595**Gray **106-600**

reg. \$12.99

**\$9.99 each pair**



## textured tops



### NEW

#### ❖ Textured Halter Top

Black pleated halter top with keyhole at back of neck. Scallop edge hem. 100% polyester. Centre back length: 62 cm on M; 67 cm on 1X. Machine wash, dry flat.

XS(0-2) 106-428

S(4-6) 106-432

M(8-10) 106-447

L(12-14) 106-451

XL(16) 106-470

1X(18W-20W) 106-504

2X(22W-24W) 106-519

3X(26W-28W) 106-580

reg. \$59.99

**\$44.99**

Meadow Cluster Earrings  
sold on page 162.

PLEATED  
halter  
top with  
scallop  
edge hem



### NEW

❖ Smocked Blouse  
Wine coloured blouse with front smocking, round neckline, short sleeves and scallop edge hem. Polyester/spandex. Centre back length: 65 cm on M; 67 cm on 1X. Machine wash, dry flat.

XS(0-2) 105-713

S(4-6) 105-728

M(8-10) 105-766

L(12-14) 105-770

XL(16) 106-212

1X(18W-20W) 106-380

2X(22W-24W) 106-409

3X(26W-28W) 106-413

reg. \$69.99

**\$54.99**

Classic Jewel Collection  
sold on page 163.

SMOCKED  
FRONT  
blouse with  
scallop edge  
hem





## yay, chambray!

### ❖ Chambray Dress

Denim blue lightweight chambray dress with V-neckline and short sleeves. Button front, ruffle hem and self-tie fabric belt at waist. 100% lyocell. Centre back length: 93 cm on M; 95 cm on 1X. Machine wash, line dry, remove belt before washing.

XS(0-2) **042-002**

S(4-6) **042-055**

M(8-10) **042-060**

L(12-14) **042-074**

XL(16) **042-347**

1X(18W-20W) **042-351**

2X(22W-24W) **042-370**

3X(26W-28W) **042-969**

reg. \$84.99

**\$66.99**



Color Cascade Layered  
Collection sold on  
page 154.



### ❖ Relaxed Rolled Sleeve Top

Black relaxed-fit top with round neckline and short rolled sleeves that are fixed. Mixed material features textured front with soft knit back. Front panel: polyester/spandex. Back panel and trim: polyester/rayon/spandex. Centre back length: 57 cm on M; 62 cm on 1X. Machine wash and dry.

XS(0-2) **043-066**

S(4-6) **043-070**

M(8-10) **043-119**

L(12-14) **044-631**

XL(16) **044-904**

1X(18W-20W) **045-054**

2X(22W-24W) **046-099**

3X(26W-28W) **046-448**

reg. \$69.99

**\$54.99**



### ❖ 2-Pack V-Neck Tees

Fuchsia and light green tees with V-neckline and short sleeves. 100% cotton. Centre back length: 60 cm on M; 64 cm on 1X. Machine wash and dry.

XS(0-2) **046-820**

XL(16) **046-926**

S(4-6) **046-840**

1X(18W-20W) **046-945**

M(8-10) **046-873**

2X(22W-24W) **046-950**

L(12-14) **046-907**

3X(26W-28W) **046-964**

reg. \$69.99

**\$54.99 the pack**

### ❖ Striped Wide-Leg Crop Pant

Black and multicolour stripe pleated crop pant. Wide-leg fit and elastic waistband for easy pull-on styling. 100% polyester. Inseam: 58 cm on all sizes. Machine wash, line dry.

XS(0-2) **046-510**

XL(16) **046-562**

S(4-6) **046-539**

1X(18W-20W) **046-581**

M(8-10) **046-543**

2X(22W-24W) **046-596**

L(12-14) **046-558**

3X(26W-28W) **046-816**

reg. \$69.99

**\$54.99**

Low Heel Mule sold on page 129.



**SHEER  
OVERLAY  
TOP**  
with lining and  
three quarter  
length sleeves

❖ **Floral  
Lightweight Top**  
Sheer floral print  
overlay top with lining  
and flowy ¾ length  
sleeves. Body and  
lining: polyester.  
Centre back length:  
66 cm on M; 71 cm on  
1X. Machine wash,  
line dry.  
XS(0-2) **907-377**  
S(4-6) **907-453**  
M(8-10) **907-468**  
L(12-14) **907-487**  
XL(16) **907-544**  
1X(18W-20W) **907-582**  
2X(22W-24W) **907-597**  
3X(26W-28W) **907-601**  
reg. \$66.99  
**\$51.99**

**PULL-ON  
PANT**  
with smocked  
waist and  
straight leg fit

## floaty florals

❖ **Linen Pull-On Pant**  
Khaki green linen  
blend pant with  
smocked waist.  
Side seam pockets  
and straight leg fit.  
Polyester/rayon/linen.  
Inseam: 74 cm all  
sizes. Machine wash,  
line dry.  
XS(0-2) **907-640**  
S(4-6) **907-688**  
M(8-10) **907-692**  
L(12-14) **908-024**  
XL(16) **908-149**  
1X(18W-20W) **908-851**  
2X(22W-24W) **908-866**  
3X(26W-28W) **908-870**  
reg. \$74.99  
**\$59.99**

Island Sandal sold on page 141.



❖ **2-Pack Rib Knit Tanks**  
Khaki green and beige  
ribbed tanks with scoop  
neck. Cotton/spandex.  
Centre back length:  
55 cm on M; 60 cm on 1X.  
Machine wash and dry.  
XS(0-2) **909-437**  
S(4-6) **909-441**  
M(8-10) **909-790**  
L(12-14) **910-054**  
XL(16) **910-422**  
1X(18W-20W) **910-437**  
2X(22W-24W) **910-441**  
3X(26W-28W) **910-480**  
reg. \$48.99  
**\$36.99 the pack**



❖ **Knit Pullover**  
Beige lightweight  
pullover with V-neck  
and side slits. Versatile  
layering piece can be  
worn over a swimsuit  
or tank. Polyester/  
spandex. Centre back  
length: 66 cm on M/L;  
69 cm on XL/1X.  
Machine wash and dry.  
XS/S **911-008**  
M/L **911-103**  
XL/1X **911-122**  
2X/3X **911-180**  
reg. \$74.99  
**\$59.99**

Moonlight Waves Collection sold  
on page 159.

Pullover is shown paired with  
the beige tank from the  
2-Pack Rib Knit Tanks.





# sunshine vibes

Keep it light and bright in summer-ready white with golden stripes and a flowy fit that flits.

## ❖ Metallic Stripe Wrap Dress

White surplice dress with golden metallic stripes. Sleeveless, self-tie belt at waist and back zipper closure. Bottom is lined. Body and lining: polyester. Centre back length: 123 cm on M; 126 cm on 1X. Machine wash, line dry (remove self-tie belt before washing).

XS(0-2) 906-586  
S(4-6) 906-590  
M(8-10) 906-830  
L(12-14) 906-954  
XL(16) 906-973  
1X(18W-20W) 907-104  
2X(22W-24W) 907-157  
3X(26W-28W) 907-248  
reg. \$80.99

**\$63.99**

Abalone Gemstone Collection  
sold on page 158.

SURPLICE  
faux  
wrap  
styling

BOTTOM  
LINING  
hits below  
the knee

# oh-so flamingo

## ❖ Flamingo PJ Set

2-piece striped pajama set with pink flamingo print. Top with V-neck and short sleeves. Pull-on cropped bottoms with elastic waist. Polyester/spandex. Centre back length: 60 cm on M; 65 cm on 1X. Inseam: 55 cm all sizes. Machine wash and dry.

XS(0-2) 916-469  
S(4-6) 918-658  
M(8-10) 918-662  
L(12-14) 918-696  
XL(16) 918-901  
1X(18W-20W) 918-954  
2X(22W-24W) 919-582  
3X(26W-28W) 920-472  
reg. \$69.99

**\$54.99 the set**



## ❖ Flamingo Slippers

Soft knit ivory slippers with embroidered flamingo motif. Striped insole and rubber outsole. Man-made materials.

S(5-6) 915-917 L(9-10) 916-249  
M(7-8) 915-936 XL(11-12) 916-454  
reg. \$33.99

**\$24.99**

### APPAREL SIZE CHART (IN CM)

| SIZE       | BUST      | WAIST     | HIP       |
|------------|-----------|-----------|-----------|
| XS 0/2     | 77 - 81   | 60 - 64   | 83 - 86   |
| S 4/6      | 85 - 89   | 67 - 71   | 90 - 94   |
| M 8/10     | 93 - 97   | 75 - 79   | 98 - 102  |
| L 12/14    | 100 - 104 | 83 - 86   | 105 - 109 |
| XL 16      | 109 - 112 | 90 - 93   | 113 - 116 |
| 1X 18W/20W | 118 - 123 | 99 - 104  | 122 - 127 |
| 2X 22W/24W | 128 - 133 | 108 - 114 | 132 - 137 |
| 3X 26W/28W | 138 - 144 | 119 - 124 | 142 - 147 |



# totes to toes

## A. ♦ Market Tote

Natural oversized canvas tote with contrasting peach straps and trim. Front pocket. Cotton. **676-161**  
reg. \$42.99

**\$32.99**

## B. ♦ Maxi Lounge Dress

Peach gauze sleeveless maxi dress. Round neckline, side slits and relaxed fit. Cotton. XS(0-2) **672-568** XL(16) **673-067**  
S(4-6) **672-769** 1X(18W-20W) **673-158**  
M(8-10) **672-807** 2X(22W-24W) **673-344**  
L(12-14) **672-879** 3X(26W-28W) **673-363**  
reg. \$74.99

**\$59.99**

## C. ♦ Spring Floral Dress

Light green chiffon dress with fuchsia floral print. V-neckline, flutter sleeves, ruffle hem and self-tie fabric belt at waist. Back zipper closure. Body and lining: polyester. Remove self-tie fabric belt before washing. XS(0-2) **610-189** XL(16) **610-246**  
S(4-6) **610-208** 1X(18W-20W) **610-270**  
M(8-10) **610-212** 2X(22W-24W) **610-318**  
L(12-14) **610-231** 3X(26W-28W) **610-360**  
reg. \$84.99

**\$66.99**

## D. ♦ Beach Tote

Orange nylon-and-mesh tote with top zipper closure, multiple outside slotted pockets and inside zippered pocket. Polyester. **759-441**  
reg. \$59.99

**\$44.99**

## E. ♦ Roll-Up Sun Hat

Natural-colored braided roll-up sun hat. Bow detail at back with hook-and-loop closure. Roll-up design for easy storage/travel. Paper/polyester. One size. **759-460**  
reg. \$33.99

**\$24.99**



## F. ♦ Petal Sleeve Top

Short petal sleeves and scallop edge neck. Polyester/spandex. Turquoise XS(0-2) **667-319** Yellow XS(0-2) **667-998**  
S(4-6) **667-653** S(4-6) **668-520**  
M(8-10) **667-763** M(8-10) **668-918**  
L(12-14) **667-816** L(12-14) **669-273**  
XL(16) **667-983** XL(16) **669-288**  
1X(18W-20W) **669-383** 1X(18W-20W) **669-713**  
2X(22W-24W) **669-546** 2X(22W-24W) **669-819**  
3X(26W-28W) **669-603** 3X(26W-28W) **669-948**  
reg. \$59.99

**\$44.99 each**

## G. ♦ Chunky EVA Slide

Ivory lightweight EVA slide with molded ribbed upper. Can be worn indoors or outdoors. Half sizes order down. Man-made materials. S(5-6) **606-869** L(9-10) **606-983**  
M(7-8) **606-979** XL(11) **606-998**  
reg. \$29.99

**\$21.99**

## H. ♦ Button Front Skirt

White crepe skirt has decorative buttons with faux wood finish. Flat front waistband with elastic back. Calf-length, lined through the knee. Body: rayon. Lining: polyester. XS(0-2) **669-967** XL(16) **670-159**  
S(4-6) **669-986** 1X(18W-20W) **670-163**  
M(8-10) **670-034** 2X(22W-24W) **670-178**  
L(12-14) **670-068** 3X(26W-28W) **670-182**  
reg. \$66.99

**\$51.99**

## I. ♦ Scatter Floral Top

Navy top with white floral print, double-layer flutter sleeves and tie detail at neckline. Elastic smocking at front and back top panels. Polyester/spandex. XS(0-2) **672-238** XL(16) **672-348**  
S(4-6) **672-300** 1X(18W-20W) **672-352**  
M(8-10) **672-314** 2X(22W-24W) **672-443**  
L(12-14) **672-329** 3X(26W-28W) **672-500**  
reg. \$66.99

**\$51.99**

## J. ♦ Garden Striped Button-Down Top

Floral/stripe collared shirt, button-front placket and cuff sleeves. Oversize fit. Polyester/cotton. XS(0-2) **676-453** XL(16) **677-741**  
S(4-6) **676-530** 1X(18W-20W) **677-890**  
M(8-10) **676-620** 2X(22W-24W) **677-961**  
L(12-14) **677-699** 3X(26W-28W) **677-976**  
reg. \$80.99

**\$63.99**

## K. ♦ Island Sandal

White, leatherlike, halter back and peep toe. Inside elastic on halter strap and padded insole. Half sizes order up. Man-made materials. 6 **670-220** 8 **671-633** 10 **671-872**  
7 **670-474** 9 **671-868** 11 **672-056**  
reg. \$59.99

**\$44.99**





**A. ♦ Stacked Avon T-shirt**  
Black. Crew neck with short sleeves and black graphic. Cotton. Centre back length: 74 cm on L. Machine wash and dry.  
S 636-215    XXL 636-287  
M 636-220    XXXL 636-291  
L 636-234    XXXXL 636-306  
XL 636-272  
reg. \$42.99

**\$32.99**

**B. ♦ Avon 1886 Cap**  
Off-white unisex cap with gold metallic embroidered logo, adjustable tuck-in strap and metal buckle. Cotton. One size fits most. Hand wash and hang dry. 639-855  
reg. \$36.99

**\$29.99**

**C. ♦ Avon Calling Long Sleeve T-Shirt**  
Grey unisex tee with pink metallic and cream graphic, crew neck and long sleeves. Cotton. Centre back length: 74 cm on L. Machine wash and dry.  
S 636-310    XXL 636-378  
M 636-344    XXXL 636-416  
L 636-359    XXXXL 636-473  
XL 636-363  
reg. \$48.99

**\$36.99**

**D. Avon Far Away Bali Pin**  
Pearlesque cap, purple enamel and tassel with goldtone. 3 cm L. 011-100  
reg. \$14.99

**\$11.99**

**E. ♦ Split Avon Hoodie**  
Pink unisex pullover with kangaroo pocket and logo graphic. Cotton/polyester. Centre back length: 70 cm on L. Machine wash and dry.  
S 636-507    XXL 636-640  
M 636-511    XXXL 636-655  
L 636-621    XXXXL 636-689  
XL 636-636  
reg. \$69.99

**\$54.99**

**F. Avon Beyond Glow Pin**  
White enamel cap and label with silvertone. 3 cm L. 011-114  
reg. \$14.99

**\$11.99**

**G. Avon Skin So Soft Pin**  
Green enamel and silvertone. 3 cm L. 011-243  
reg. \$14.99

**\$11.99**



**H. ♦ Avon Feelin' Fresh Hoodie**  
Ivory unisex pullover with kangaroo pocket and blue/green logo print. Cotton/polyester. Centre back length: 70 cm on L. Machine wash and dry.  
S 057-714    XXL 059-698  
M 057-934    XXXL 060-224  
L 058-888    XXXXL 060-300  
XL 059-406  
reg. \$74.99

**\$59.99**

**♦ T-Shirts**  
Crew neck tees. Cotton. Centre back length: 74 cm on L. Machine wash and dry.

**I. Ring My Bell Long-Sleeve**  
Black unisex with long sleeves and coloured logo foil graphic.  
S 060-520    XXL 060-717  
M 060-554    XXXL 060-721  
L 060-569    XXXXL 060-736  
XL 060-588  
reg. \$48.99

**\$36.99**

**J. Avon Archive Mist**  
Pink unisex with short sleeves and vintage print graphic.  
S 060-740    XXL 060-793  
M 060-755    XXXL 060-812  
L 060-774    XXXXL 060-827  
XL 060-789  
reg. \$42.99

**\$32.99**

**K. Avon Archive Nail**  
Ivory unisex with short sleeves and vintage print graphic.  
S 060-831    XXL 060-918  
M 060-850    XXXL 060-937  
L 060-865    XXXXL 060-941  
XL 060-870  
reg. \$42.99

**\$32.99**

**L. Sweet Honesty Short Sleeve**  
Pink with short sleeves and green logo graphic.  
S 060-315    XXL 060-478  
M 060-320    XXXL 060-497  
L 060-334    XXXXL 060-501  
XL 060-444  
reg. \$42.99

**\$32.99**

**M. ♦ Avon Button Notebook**  
Spiral-bound with button-pin print graphics. 100 lined pages and '24-'26 calendar. Man-made materials. 13 cm W x 18 cm L. 060-516  
reg. \$30.99

**\$23.99**





## NEW

### Crimson Aurora Collection

Crimson coloured beads with goldtone.

#### Bead Hoop Earrings

Rounded cabochon style beads. 3 cm L. Pierced.

109-078

reg. \$18.99

**\$14.99**

#### Multi-Row Beaded Necklace

Four-row necklace. 42 cm L with 9 cm extender. 109-010

reg. \$48.99

**\$36.99**

#### Multi-Row Beaded Bracelet Set

Set of four bracelets. Stretches to fit most.

109-025

reg. \$24.99

**\$18.99 the set**

sultry and sophisticated

Load on the layers of this deep and passionate hue.

#### Scarlet Arc Statement Earrings

Goldtone with red curved stones. 3 cm L. Pierced.

109-082

reg. \$24.99

**\$18.99**

#### Abstract Arc Statement Earrings

Goldtone bar with multicolour drops. 3 cm L. Pierced.

109-097

reg. \$14.99

**\$11.99**

set of 4 bracelets



**NEW****Radiant Pavé Teardrop Set**

Silvertone with pavé accented pendant. Chain, 42 cm L with 9 cm extender. Pendant, 3 cm L. Pierced drops, 4 cm L.  
**109-230**  
 reg. \$36.99

**\$29.99 the set**

**Radiant Pavé Pearly Set**

Goldtone with pavé accented pendant and pearly beads. Chain, 42 cm L with 9 cm extender. Pendant, 4 cm L. Pierced drops, 3 cm L.  
**109-470**  
 reg. \$36.99

**\$29.99 the set**

necklace and earring sets

Maple Leaf/  
 Goldtone  
**109-135**

Branch/  
 Silvertone  
**109-101**

Petal/  
 Goldtone  
**109-140**

**NEW****Pearlescent Season Leaf Necklace**

Mother-of-pearl pendants with metal overlay. Chain, 42 cm L with 9 cm extender. Pendant, 3 cm L.  
 reg. \$18.99

**\$14.99 each**

# mix master

Make an impact with a cool combo of bold blues and colourful accent stones.

**NEW**

**Blue Modern Mosaic Collection**  
 Glass faceted and coloured beads with goldtone metal accents.

**Necklace and Earring Set**

Necklace, 84 cm L with 9 cm extender. Pierced drops, 6 cm L.  
**109-169**  
 reg. \$36.99

**\$29.99 the set**

**Bracelet**

Stretches to fit most. **109-192**  
 reg. \$24.99

**\$18.99**

necklace and earring set



# everyday elegance

Timeless pieces exuding delicate pearly charm.



necklace, earring and bracelet set

**Pearly Wrap Adjustable Pull-Cord Watch**  
Pearlesque bracelet watch with goldtone case, 27 mm diam. Pull-cord fits most. Water-resistant to 3 ATM. **062-447**  
reg. \$69.99  
**\$54.99**

**Pure Grace Pearly 3-Piece Set**  
Goldtone with the look of pearls. Necklace, 42 cm L with 9 cm extender. Pierced drops, 4 cm L. Pull-cord bracelet fits most. **062-561**  
reg. \$33.99  
**\$24.99 the set**

# here comes the sunflower

Bask in the warmth and radiant beauty of golden blooms.



**NEW**

**Bloom and Glow Collection**  
Look of pearls and coloured glass beads with goldtone and accent stones.

**Hoop Earrings**  
4 cm L. Pierced. **109-704**  
reg. \$18.99  
**\$14.99**

**Pearly Necklace**  
42 cm L with 9 cm extender. **109-541**  
reg. \$24.99  
**\$18.99**

**Pearly Bracelet**  
18 cm L with 3 cm extender. **109-556**  
reg. \$18.99  
**\$14.99**



**Azure Meadow Collection**

Blue ceramic glass beads and accents with silvertone.

**Layered Necklace**

Two-row necklace, 42 cm L with 9 cm extender.

**061-068**

reg. \$36.99

**\$29.99**

**Bracelet Set**

2-piece bracelet set. Stretches to fit most.

**061-072**

reg. \$24.99

**\$18.99 the set**

**Stretch Ring**

With reconstituted blue stone, 3 cm W. Stretches to fit most.

**061-110**

reg. \$18.99

**\$14.99**

2-bracelet set

## sky-blue hues

A beautiful blend of light and deep blues.

## glisten up

Gem-like clusters  
gleam with brilliant lustre.

**Luxe Blue Flora Collection**

Floral crystal design with aquamarine, emerald and sapphire coloured glass stones set in silvertone.

**Necklace and Earring Set**

Chain, 42 cm L with 9 cm extender. Pendant, 4 cm L. Pierced earrings, 2 cm L.

**063-367**

reg. \$29.99

**\$21.99 the set**

**Ring**

3 cm W.

6 **063-405**

8 **063-410**

10 **063-424**

reg. \$18.99

**\$14.99**

necklace and  
earring set



**Pendant Necklace**  
 Goldtone chain  
 with coloured glass  
 pendant. Chain,  
 61 cm L with  
 9 cm extender.  
 Pendants range from  
 4 to 5 cm L.  
 Blue Horizon/Light Blue  
**061-326**  
 Midnight Leaf/Black  
**061-144**  
 Violet Dewdrop/Violet  
**061-182**  
 Dusk Frame/Gray-Blue  
**061-130**  
 reg. \$24.99  
**\$18.99 each**

## singular statements

Captivating pendants with  
 the look of natural stone.



## ahead of the curve

Intricate textures take classic  
 hoops to the next level.



**Woven Glow  
Hoop Earrings**  
 Intricate cutout  
 texture. 3 cm L.  
 Goldtone **062-193**  
 Silvertone **061-819**

**Dotted Grace  
Hoop Earrings**  
 Beaded texture.  
 4 cm L.  
 Goldtone **061-622**  
 Silvertone **061-364**

**Modern Curve  
Hoop Earrings**  
 Ribbed wire look.  
 5 cm L.  
 Goldtone **061-350**  
 Silvertone **061-345**

reg. \$18.99  
**\$14.99 each pair**



# bright outlook

Candy colours and luxe layers  
are all in the mix.



**Color Cascade  
Layered Collection**  
Three-row goldtone  
chain with multicoloured  
beads, a paperclip chain  
and a blue pendant.

necklace and  
earring set

**Necklace and  
Earring Set**  
Chain, 42 cm L with  
9 cm extender.  
Pierced earrings,  
1 cm L.  
**062-853**  
reg. \$36.99  
**\$29.99 the set**

**Bracelet**  
18 cm L with  
3 cm extender.  
**062-868**  
reg. \$24.99  
**\$18.99**

**Sleek Enamel CZ  
Collection**  
Coloured enamel  
with accent cz's.



**Hoop Earrings**  
4 cm diam. Pierced.  
Red/Goldtone **062-800**  
Mint/Silvertone **062-820**  
White/Goldtone **062-815**  
reg. \$24.99  
**\$18.99 each pair**

**Cuff Bracelet Set**  
3-piece bracelet set.  
Open cuff fits most.  
**062-834**  
reg. \$35.99  
**\$26.99 the set**

3-bracelet set

**Western Sunburst  
Collection**  
Textured antique-looking  
silvertone with turquoise  
coloured accent stones.

**Necklace and Earring Set**  
Necklace, 42 cm L with 9 cm  
extender. Pierced drops,  
5 cm L. **915-826**  
reg. \$33.99  
**\$24.99 the set**

**Stretch Ring**  
Stretches to fit most.  
**915-830**  
reg. \$18.99  
**\$14.99**

necklace and  
earring set





**Luxe Eyeglass Chain**

Goldtone eyeglass chain with coloured beads and pearlesque accents. Loops slide onto temple pieces. 80 cm L.

Mist **062-796**

Pastel **062-739**

Pearly **062-762**

reg. \$18.99

**\$14.99 each**



# chic companions

Pretty pairings for your favourite eyewear.

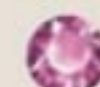
**Keepsake Birthstone Locket**

Goldtone with birthstone coloured accent stone. Chain, 42 cm L with 9 cm extender. Locket, 2 cm diam. reg. \$24.99

**\$18.99 each**



January  
911-209



February  
911-213



March  
911-490



April  
911-778



May  
912-152



June  
913-379



July  
913-766



August  
913-770



September  
913-804



October  
914-270



November  
914-284



December  
914-318

**Cherished Moments Collection**

Charms with sparkling accents, faceted beads and metal accents.

**Bracelet Set**

2-piece sets. Stretches to fit most.

Star/Green/Goldtone **915-109**

Feather/Purple/Silvertone **915-223**

Evil Eye/White/Silvertone **915-371**

reg. \$24.99

**\$18.99 each set**

**Necklace**

42 cm L with 9 cm extender.

Luck/Green/Goldtone **914-834**

Family/Purple/Silvertone **914-490**

Love/Pink/Goldtone **914-519**

reg. \$29.99

**\$21.99 each**



**Abalone Gemscape Statement Collection**

Mix of abalone, mother-of-pearl and gem-like stones set in antique-looking goldtone.

**Necklace**

42 cm L with 9 cm extender. **907-305**  
reg. \$48.99

**\$36.99**

**Blossom Breeze Collection**

The look of mother-of-pearl set in goldtone.

**Necklace**

Glass pearlesque, blush and champagne beads. 71 cm L with 9 cm extender.

**922-346**

reg. \$36.99

**\$29.99**

**Moonlight Waves Collection**

Semi-precious opals, blue, pearlesque and goldtone beads, plus charm with cz.

**Layered Necklace**

3-layer necklace. Shortest layer, 41 cm L; longest layer, 52 cm with 9 cm extender.

**909-202**

reg. \$36.99

**\$29.99**

**Bracelet Set**

3-bracelet set. Stretches to fit most.

**909-260**

reg. \$29.99

**\$21.99**

the set

3-bracelet set

**Earrings**

5 cm L. Pierced. **907-362**  
reg. \$24.99

**\$18.99**

**Bracelet**

18 cm L with 3 cm extender. **907-310**  
reg. \$24.99

**\$18.99**

**Interchangeable Earrings**

2-in-1. Rattan hoops with removable flower. 4 cm L. Pierced. **922-365**  
reg. \$24.99

**\$18.99**

**Bracelet**

With cz. Fits most. **922-350**  
reg. \$24.99

**\$18.99**

2-bracelet sets

**Seaside Collection**

Starfish or shell motifs.

**Starfish Watch**

Leatherlike strap, 23 cm L. Goldtone case, 36 mm diam. Water-resistant to 3 ATM.

Green **908-938**

Blush **909-054**

reg. \$59.99

**\$44.99 each**

**Charm Beaded Bracelets**

2-bracelet sets. Stretches to fit most.

Teal/Silvertone **909-111**

Blush/Goldtone **909-126**

reg. \$24.99

**\$18.99 each set**

**Starfish Charm Drop Earrings**

Goldtone with mother-of-pearl accent. 6 cm L. Pierced. **909-183**  
reg. \$24.99

**\$18.99**





**Charming Wishes Beaded Bracelet**  
Faceted round coloured beads with goldtone charms accented with stones. Stretches to fit most.  
Blue 674-317    Pink 674-173  
Green 674-298    Purple 674-063  
reg. \$18.99  
**\$14.99 each**

**3-ring set**

**Delicate Garden Collection**  
Goldtone with multicolour and clear stones, and opalesque beads.

**Ring Set**  
Includes two solid goldtone rings and one textured.  
6 673-454  
8 673-511  
10 673-545  
reg. \$18.99

**\$14.99 the set**

**3-Piece Set**  
With pink and green flower motifs. Necklace, 42 cm L with 9 cm extender. Bracelet, 19 cm L with 3 cm extender. Pierced drops, 3 cm L. 673-420  
reg. \$33.99

**\$24.99 the set**

necklace,  
bracelet and  
earring set

**Spring Cocktail Jewel Ring**  
Faceted glass stone, 1 cm W, with crystal halo setting. reg. \$24.99  
**\$18.99 each**

|                                     |                                  |
|-------------------------------------|----------------------------------|
| Purple (pear-shaped)/<br>SILVERTONE | Green (emerald-cut)/<br>GOLDTONE |
| 6 675-280                           | 6 675-624                        |
| 8 675-347                           | 8 675-639                        |
| 10 675-571                          | 10 675-643                       |

|                                   |                               |
|-----------------------------------|-------------------------------|
| Blue (cushion-cut)/<br>SILVERTONE | Peach (oval-cut)/<br>GOLDTONE |
| 6 674-518                         | 6 675-677                     |
| 8 674-958                         | 8 675-681                     |
| 10 674-962                        | 10 675-696                    |



**Pearly Charm Initial Necklace**  
Goldtone chain with pearly pendant.  
reg. \$14.99  
**\$11.99 each**



A 609-466 B 609-485 C 609-490 D 609-519



E 609-523 G 609-538 J 609-600 K 609-614 L 609-629



M 609-633 N 609-648 O 609-360 P 609-652



R 609-686 S 609-758 T 609-762 V 609-777

**Bejeweled Bliss Collection**  
Pastel coloured rectangular stones set in silvertone.

**Drop Earrings**  
6 cm L.  
Pierced.  
672-190  
reg. \$18.99  
**\$14.99**

**Necklace**  
42 cm L with 9 cm extender.  
672-185  
reg. \$36.99  
**\$29.99**

**Bracelet**  
18 cm L with 3 cm extender.  
672-219  
reg. \$24.99  
**\$18.99**



**Seaside Charm Anklet Set**  
Goldtone sets with coloured beads, charms and pearly accents.  
23 cm L with 3 cm extender.  
reg. \$18.99  
**\$14.99 each set**

**2-anklet sets**



Garden/Multicolour Beads  
672-060

Sea/Blue Beads  
672-075

Stars/White Beads  
672-113



**NEW****Meadow Collection**

Goldtone with soft tone coloured stones.

**Choker Necklace**

Coiled beaded wire chain; one size fits most.

**109-829**

reg. \$29.99

**\$21.99**

**Cluster Earrings**

Glass and resin stones. 5 cm L. Pierced.

**110-006**

reg. \$18.99

**\$14.99**



necklace and  
earring set

## stunning stones

Capture the timeless allure of gem-like tones.

**NEW****Classic Jewel Drop Necklace and Earring Set**

Warm coloured stones and glass pearly accents with goldtone.

Necklace, 42 cm L with 9 cm extender; drop, 8 cm L. Pierced drops, 2 cm L. **110-044**

reg. \$36.99

**\$29.99 the set**



LIP LINERS

|   |   |  |   |  |  |
|---|---|--|---|--|--|
| <br>Honey Peach<br>327-721   | <br>Lava Red<br>327-740    | <br>Passion Red<br>327-650  | <br>Red Brick<br>330-451 | <br>Chocolate<br>330-667    | <br>Simply Spice<br>330-614 |
| <br>Mystery Mauve<br>330-538 | <br>Candy Apple<br>327-903 | <br>Pink Bouquet<br>330-356 | <br>Merlot<br>330-284    | <br>Perfect Plum<br>330-887 | <br>Au Naturel<br>330-318   |

EYELINERS

|   |  |  |   |   |   |
|---|--|--|---|---|---|
| <br>CREAM<br>Emerald Green<br>334-332        | <br>CREAM<br>Starry Night<br>334-347      | <br>CREAM<br>Saturn Grey<br>334-328           | <br>CREAM<br>Majestic Plum<br>334-313        | <br>CREAM<br>Cosmic Brown<br>334-351             | <br>CREAM<br>Blackest Black<br>334-366 |
| <br>DIAMOND<br>Sterling<br>331-960           | <br>DIAMOND<br>Teal Sparkle<br>331-606    | <br>DIAMOND<br>Olive<br>331-940               | <br>DIAMOND<br>Twilight Sparkle<br>331-553   | <br>DIAMOND<br>Sugar Plum<br>331-625             | <br>DIAMOND<br>Purple Rain<br>332-071  |
| <br>DIAMOND<br>Smoky Diamond<br>331-280     | <br>DIAMOND<br>Brown Sugar<br>331-568    | <br>DIAMOND<br>Black Ice<br>331-610          | <br>WATERPROOF<br>Blue Skies<br>334-237     | <br>WATERPROOF<br>Brown<br>Chocolate<br>332-124 | <br>WATERPROOF<br>Raisin<br>332-200   |
| <br>WATERPROOF<br>Seafoam Green<br>334-241 | <br>WATERPROOF<br>Smoky Grey<br>332-162 | <br>WATERPROOF<br>Blackest Night<br>229-491 | <br>WATERPROOF<br>Midnight Blue<br>332-158 |   |   |

BROW DEFINERS

|  |  |   |   |  |  |
|--|--|---|---|--|--|
| <br>Light Blonde<br>331-109 | <br>Blonde<br>331-113 | <br>Tawny<br>331-128 | <br>Light Brown<br>331-151 | <br>Dark Brown<br>331-147 | <br>Brunette<br>331-242 |
|--|--|---|---|--|--|

**fmg Glimmer Liners for Eyes, Brows and Lips**  
Long wearing. Retractable. Formulated without parabens, sulfates and talc. 0.28 g reg. \$13

**NOW \$3.99 each**

Available in Lip Liner, Brow Definer and Cream, Diamond and Waterproof Eyeliner. Excludes Fine Brow Pencil, Always On Point and Liquid Eyeliners.



© 2025 The Avon Company Canada Limited. All rights reserved.

**CAMPAIGN 15, 2025**  
5500 TRANS-CANADA HWY.  
POINTE CLAIRE, QUEBEC  
H9R 1B6

**1-800-265-2866**  
**avon.ca**

  
8 88761 73142 1  
Pk of 10 4766171

  
8 88761 73144 5  
Single 4766191

Brochure effective until \_\_\_\_\_

 See our commitment at  
avon.ca > Policies > Animal Welfare Policy

**RETURN POLICY** If you are not satisfied, return any item within 45 days. View Avon's full 45-Day Return Policy at avon.ca > Support > Return Policy.