

# AVON

CAMPAIGN 16  
AVON.CA

Soft skin is  
always in

60<sup>th</sup>  
ANNIVERSARY



AVON  
SKIN  
*SO*  
SOFT

ORIGINAL

BATH OIL  
HUILE DE BAIN



# Skin So Soft

60 YEARS OF SOFT SKIN

Legendary formula that started it all! **ORIGINAL** with skin-replenishing jojoba oil and a fresh herbal scent.

## the wonder of bath oils

Indulge in a luxurious pampering ritual, with our moisturizing oils, for the feel of irresistibly soft skin, like never before.



bonus size  
739 ml



**Skin So Soft  
Bath Oil - Bonus Size**  
739 ml  
Original 107-681-5  
Soft & Sensual 107-736-1  
Radiant Moisture 107-681-1  
reg. 42.00

**LIMITED  
TIME OFFER**  
**19.99** each

### our GIFT to you

**Popcorn Socks**  
Pink. Fits shoe sizes 6-10. Polyester/elastane. Machine wash and dry. **6.00 VALUE**

**FREE with every 19.99 purchase from pages 3-9**

In the case of unforeseen demand, Avon reserves the right to substitute a product with that of equal or greater value.





your in luxe  
**indulge**  
 in a pampering routine

**Skin So Soft Body Lotion**  
 Provides 48-hour  
 moisturization. 1 litre  
**Original 107-765-7**  
**Radiant Moisture**  
**107-765-8**  
**Soft & Sensual 107-765-9**  
**Supreme Nourishment**  
**107-766-0**  
 reg. 28.00

**Skin So Soft Shower Gel**  
 Hydrate and cleanse  
 with a rich, creamy  
 lather. 1 litre  
**Soft & Sensual**  
**220-839-9**  
**Original 220-839-8**  
**Radiant Moisture**  
**220-840-0**  
 reg. 21.00



**LIMITED TIME OFFER**  
**17.99** each

popcorn socks **FREE** details page 2





# supreme nourishment

with Enriching Coconut Oil



Our premium coconut oil formulas are packed with skin-softening nutrients.

**Skin So Soft  
Supreme Nourishment**

**Oil Wash**  
Softens with coconut oil and vitamin E. 350 ml  
**221-206-3**  
reg. 24.00

**Milk Lotion**  
With skin-softening coconut milk. 350 ml **221-206-4**  
reg. 24.00

**Body Soufflé**  
Airy, coconut water-infused soufflé leaves skin feeling soft all day. 200 ml  
**221-206-6**  
reg. 24.00

**SPECIAL**  
**13.99** each

**Lip Balm**  
With aloe extract and shea butter. 4 g **222-944-3**  
reg. 3.00

**SPECIAL**  
**1.99**

popcorn socks **FREE** details page 2





**Skin So Soft  
Replenishing  
Hand Cream**  
Leaves hands  
feeling soft and  
smooth. 100 ml  
Radiant Moisture  
**107-728-7**  
Soft & Sensual  
**114-351-6**  
Original **107-728-6**  
reg. 7.00

**SPECIAL  
3.99** each



treasure  
your  
hands



popcorn socks **FREE** details page 2

summer  
showers



**Skin So Soft Shower Gel**  
Rich, creamy lather leaves  
skin soft, smooth and supple.  
150 ml

Soft & Sensual **107-743-5**  
Radiant Moisture **107-736-0**  
Original **107-681-0**  
reg. 12.00

**SPECIAL  
5.99**  
each





# FRESH ALL DAY

daily essentials  
don't sweat it!

- |   |  |                                |
|---|--|--------------------------------|
|   |  |                                |
| Sweet Honesty<br>370-736                    | Rare Gold<br>103-708-2                 | Night Magic<br>107-042-5       |
|   |  |                                |
| Odyssey<br>107-042-6                        | Rare Pearls<br>103-708-1               | Timeless<br>370-735            |
|   |  |                                |
| Far Away<br>107-042-7                       | Feelin' Fresh<br>Original 380-345      | On Duty Sport<br>380-309       |
|   |  |                                |
| Skin So Soft<br>Soft & Sensual<br>119-964-4 | Cool Confidence<br>Original<br>380-344 | On Duty<br>Original<br>380-342 |



24-hour  
wetness  
protection

★ Roll-On Anti-Perspirant  
Deodorant 75 ml  
5.00 each or...

**ONLY  
99¢**

WITH EVERY 20.00  
PURCHASE FROM  
THIS BROCHURE  
(excluding pages 10-11)



# BEAUTY REGIMENS

includes three full size moisturizers plus one try-it size serum

Improves texture, clarity, uneven skin tone and overall wrinkles around eyes.

## ANEW ULTIMATE Regimen Set

- Multi-Performance Day Cream Broad Spectrum SPF 25 50 g
- Multi-Performance Eye System Cream, 15 g; elixir, 2.5 g
- Multi-Performance Night Cream 50 g
- Power Serum 7 ml

220-293-5  
reg. 158.00

**LIMITED TIME OFFER**  
**69.99**

4-piece boxed set



Helps to visibly improve sagging skin down to your neckline, while reducing the look of deep wrinkles.

## ANEW PLATINUM Regimen Set

- Day Cream SPF 25 50 g
- Eye & Lip Cream Dual applicator. 15 g
- Night Cream 50 g
- Power Serum 7 ml

120-840-6  
reg. 158.00

**LIMITED TIME OFFER**  
**69.99**

4-piece boxed set





# RETINOL THE #1 ANTI-WRINKLE FIGHTER

recommended by dermatologists



100% of  
women showed  
improvement  
in the look  
of fine lines  
and wrinkles\*

**Anew Clinical Line  
Eraser with Retinol  
Treatment**  
Use AM/PM.  
Non-comedogenic.  
30 g 108-727-3  
reg. 63.00

**LIMITED  
TIME  
OFFER  
29.99**

\*Based on a clinical study.





# BUTTER SOFT LIP BALM

with a sheer hint of colour and  
shine for your best nude lip ever

Featured shade: Lovin' Life

Wearable shades  
for all skin tones



Birthday Post  
222-024-3



Fine Wine  
222-024-0



Surprise!  
222-023-5



Birthday Suit  
222-023-2



PYT  
222-022-9



Lovin' Life  
222-022-6



**Birthday Balm Lip Crayon**  
Moisturizing formula rich in  
non-GMO shea butter for soft  
supple lips. Free of mineral oil.  
Paraben/phthalates/gluten-  
free. 2.7 g  
reg. 17.00

**LIMITED  
TIME OFFER  
10.99**





Featured shade: Soft Medium

work your  
**summer**  
**magix**

Helps to control oil and look of pores. Visibly brightens and evens skin tone.

Find your perfect shade at [avonmagixmatch.ca](http://avonmagixmatch.ca)

18 | C16



Tan Deep



Fair



Soft Medium



Light Medium



Fair  
222-883-9

Fair Light  
222-884-0

Light  
222-884-1

Light Medium  
222-884-6

Soft Medium  
222-884-8

Medium  
222-884-9

Medium Deep  
222-885-1

Tan Deep  
222-885-2

Deep  
222-885-3

✦ **fmg Magix Tint Oil-Free Tinted Moisturizer**

Buildable sheer-to-medium coverage with a demi-matte finish. Helps even skin tone and blur the look of pores. Non-drying and won't settle into fine lines. Lightweight, moisturizing formula ideal for oily skin and combination skin. 30 ml

**20.00 or...**

**ONLY  
8.99**

**WITH EVERY 15.00 PURCHASE FROM THIS BROCHURE**

(excluding pages 18-19)

Packaging may vary.



**NEW**

**LIMITED EDITION  
fmg Colors of LOVE  
Lip Shine**

Sheer and shimmering hydrating lipstick, enriched with conditioning shea butter, moisturizing meadowfoam seed oil and antioxidant vitamin E to help keep lips soft and glowing all summer long. Delicate coconut flavour. Paraben-free. 3.69 g reg. 26.00 **20.00**



Beachy Peach  
222-990-9

Summer Kiss  
222-990-8

Sunset Sail  
222-991-0

# summer sun kissed

**NEW**

**LIMITED EDITION  
fmg Colors of LOVE Summer  
Eyeshadow Palette**

Mix and layer 12 pearly shimmer and soft matte shades that capture summer from sunrise to sunset. Buildable creamy colour with a featherlight feel. Long-lasting, talc-free formula with antioxidant vitamin E blends seamlessly. Includes applicator. 8.64 g total. **222-991-2**  
reg. 55.00 **45.00**



Get a goddess glow + an instant boost of hydration with a jumbo cushion bronzer!

Featured shade:  
Morning Sunflower



Morning Sunflower  
222-137-3



Evening Sunflower  
222-263-7



Morning Sunflower

**fmg Colors of LOVE  
Sun-Kissed Cushion  
Bronzer**

Silky, water-based formula infused with hyaluronic acid to instantly hydrate, soothe and visibly plump skin, plus rosemary extract for antioxidant benefits. Buildable sheer-to-medium coverage.

23 g  
reg. 55.00

**LIMITED  
TIME  
OFFER  
35.00**





Featured shade:  
Mistress

# sun shades

Colour coordinated shades work together to enhance eyes for your most expressive summer look yet.



Mirrored compact with sponge applicator

MAKEUP



Perfectly pigmented eyeshadows in matte and shimmer finishes

**NEW**

**fmg Glimmer Eyeshadow Quad**

Perfectly pigmented shadows in matte and shimmer finishes. Creamy soft powder formula hugs lids with rich colour for all day wear, without the fallout. Buildable, medium to full coverage. 6 g total. reg. 20.00

**SPECIAL 16.99**





find your **summer** power colour



MAKEUP

Featured shade: Whirlwind

Enticing and inspiring spectrum of 20 versatile and expressive shades for every mood and attitude.

**NEW**

**fmg Glimmer Satin Lipstick**

Lightweight, smooth and creamy formula is infused with pomegranate extract to help provide antioxidant benefits. Soft satin finish delivers rich, comfortable colour with buildable medium-full coverage. 3 g reg. 16.00

**SPECIAL**  
**12.99**



It's easy to get eye-catching nails with our gel finish 7-in-1 benefits formula.

# summer shine



Featured shade: Purplicious



- |   |   |   |
|---|---|---|
|  |  |  |
| <b>CRÈME</b><br>Very Berry<br>112-310-8   | <b>CRÈME</b><br>Purplicious<br>112-310-7  | <b>SHIMMER</b><br>Dazzle Pink<br>112-310-5  |
|  |  |  |
| <b>CRÈME</b><br>Mint To Be<br>108-822-2   | <b>SPARKLE</b><br>Glimmer<br>434-549  | <b>GEL FINISH</b><br>Top Coat<br>109-228-7  |

**Gel Finish 7-in-1 Nail Enamel**  
Shine, gel-like finish, protection, strengthener, base and top coat. 12 ml

**Gel Finish Top Coat**  
Extend the life of your mani. 12 ml **109-228-7**  
reg. 14.00  
**8.99 each or...**

**CHOOSE ANY 2 FOR 14.00**  
**PAGES 26-27**  
To get the 2 FOR price, order in multiples of 2.



# liquid sunshine

Put your eyes in the spotlight with a buildable, silky, creamy, water-resistant formula.



Featured shade: Sunstone

Available in 3 ultrafine pearl finishes: Matte Sateen, Glitter or Shimmer

			
SHIMMER Pink Topaz 221-851-3	MATTE SATEEN Citrine 222-434-6	MATTE SATEEN Pink Sapphire 222-434-5	MATTE SATEEN Jasper 222-434-7
			
MATTE SATEEN Sunstone 222-434-3	GLITTER Peach Sapphire 221-139-4	MATTE SATEEN Moonstone 222-434-4	SHIMMER Rose Gold 221-139-8
			
GLITTER Fool's Gold 221-139-6	MATTE SATEEN Tiger's Eye 222-434-8	SHIMMER Bronze Age 221-139-9	
			
GLITTER Diamond Dust 221-850-2	SHIMMER Crystal Lilac 221-851-1	SHIMMER Iron Violet 221-139-5	



Diamond Dust

Stay all-day, no smudge, no crease.

**fmg Glimmershadow Liquid Eyeshadow**  
Buildable formula with no messy fallout. Water-resistant. Paraben/phtalate/sulfate-free. 2 ml  
17.00 or...

**ONLY 6.49**

WITH EVERY 10.00 PURCHASE FROM PAGES 16-49 (excluding page 29)



# Defines eyes perfectly


**Avon True Color Glimmersticks Eyeliner**  
Retractable, long-wearing liners.  
0.28 g  
**13.00**

Purple Rain



Create the eye-catching looks you love with creamy gel shadow and liner.

Featured shades: fmg Glimmer Longwear Gel Eyeshadows in Dragonfly and Firefly and Eyeliner in Tornado



4 matte eyeliner shades

**NEW**

### fmg Glimmer Longwear Gel Eyeliner

Richly pigmented formula provides a creamy line of high-performance colour that wears all day and dries to an intense matte finish. Use as an eyeshadow base to amp up overlying colours. Full, opaque coverage. Smudge/flake-proof. Fade-resistant. 6 g  
reg. 18.00  
**14.99**

4 shimmer eyeshadow shades

# swipe glimmer done

**NEW**

### fmg Glimmer Longwear Gel Eyeshadow

Long-wearing, creamy weightless formula with delicate pearls that capture and reflect light, so lids look shimmery all day and night. Richly pigmented colour glides on easily and sets for a vibrant finish. Seamless, buildable coverage, never looks heavy or cakey. Crease/smudge-proof. Fade-resistant. 6 g  
reg. 18.00  
**14.99**





# mascara match- maker

Fill every lash wish!

**helix brush**  
coats lashes for root-to-tip volume



**tapered wire brush**  
thickens and separates lashes



**flexi-brush**  
defines and lengthens lashes



Plumping  
microfibres.

**Avon True Color  
Super Shock  
Volumizing  
Mascara**  
10 ml  
Black 110-323-2  
16.00 or...

Waterproof  
formula.

**Wash-Off  
Waterproof Mascara**  
Washes off with  
soap and water. 6 g  
Black 100-388  
14.00 or...

Long and healthy.

**Avon True Color  
Super Extend  
Nourishing Mascara**  
With argan and  
coconut oil. 7 ml  
Black 113-543-7  
Brown Black  
113-543-8  
16.00 or...

**CHOOSE  
ANY 2 FOR  
20.00**

**PAGES 32-33**

To get the 2 FOR price,  
order in multiples of 2.





Black  
220-000-5

Ultra fine and super sleek  
**Avon True Color Super Extend Precise Liquid Pen**  
1 ml  
reg. 13.00  
**9.99**



Black Brown  
111-787-1

Bonus! Built in sharpener  
**Avon True Color Always On Point Eyeliner**  
0.31 g  
reg. 13.00  
**9.99**



Black  
100-844-2

Calligraphy tip for ultimate control.  
**Mega Effects Liquid Eyeliner**  
1 ml  
reg. 13.00  
**7.99**



Length and volume.  
**Love at 1st Lash Mascara**  
9 ml  
**Blackest Black**  
220-247-9  
reg. 23.00  
**16.99**



Waterproof formula.  
**Love at 1st Lash Waterproof Mascara**  
8.5 ml  
**Blackest Black**  
222-014-9  
reg. 23.00  
**16.99**



**Anew Clinical Unlimited Lashes Lash & Brow Activating Serum\***  
84% of women agreed lashes look longer and fuller after 8 weeks of use.\*\* Use PM.  
3 ml **220-342-0**  
reg. 84.00  
**45.00**



Light Blonde  
110-663-1

Blonde  
112-304-1

Tawny  
112-304-2

Light Brown  
112-304-5

Dark Brown  
112-304-3

Brunette  
112-304-6

Fills and shapes brows  
**Avon True Color Glimmersticks Brow Definer**  
Retractable, self-sharpening. 0.28 g  
reg. 13.00  
**5.99**



Blonde  
221-447-9

Soft Brown  
221-448-0

Medium Brown  
221-448-1

Brown Black  
221-448-2

**Hi-Brow Sculpting Gel**  
Smudge-proof, flake-proof and water-resistant flexible formula.  
3.7 ml  
reg. 24.00  
**18.99**

\*Anew Clinical Unlimited Lashes is not intended to reverse or reduce hair loss or grow hair. \*\*Based on an 8-week consumer-perception study.



# take it off... gently!

## Two highly-effective formulas

remove all traces of makeup while being gentle on dehydrated skin.



Come clean in a swipe.

**Makeup Remover Wipes with Mineral Complex**

For face and eyes.  
24 wipes. 104-396-5

16.00 or...

**2 FOR 17.00**

To get the 2 FOR price, order in multiples of 2.

Moisturizes and conditions lashes and delicate skin around the eye area.

**Avon True Color Moisturizing Eye Makeup Remover Lotion**  
80 ml 109-574-9

12.00 or...

**2 FOR 10.00**

To get the 2 FOR price, order in multiples of 2.





# invisible

multi-tasking  
shine  
stoppers

HELPS REDUCE  
THE LOOK OF FINE  
LINES AND PORES

**NEW**

**fmg Magix Blur Oil Control  
Primer Balm**

Velvety, sheer formula with special blurring powder microspheres creates an ultra-smooth shine-free canvas for improved makeup wear. Formulated with **nutmeg extract for antioxidant benefits**. Includes a sponge applicator. Paraben/talc-free. 17 g  
**Invisible 222-878-9**  
reg. 28.00  
22.99



SETS MAKEUP  
AND HELPS  
CONTROL SHINE

**NEW**

**A. fmg Magix Dust  
Finishing Powder**

Lightweight, mineral-infused loose powder diffuses light and visibly blurs pores and fine lines. Velvety-soft matte finish. No-spill, twist and lock sifter for a no-mess application. Comes with powder puff applicator. Talc/paraben/fragrance-free. 6.5 g  
**Invisible 222-877-9**  
reg. 24.00  
19.99

**B. fmg Magix Dust  
Finishing Powder**

Weightless loose mineral powder diffuses light, visibly blurs pores, and controls shine. Silky feel with a naturally glowing, soft matte finish. Blend of micro-milled rose quartz, ruby and tourmaline plus **antioxidant green tea extract** to enhance and smooth skin. Wear alone or to set makeup. Zero flashback. No-spill, twist and lock sifter for a no-mess application. Talc/oil/paraben-free. 6 g  
**reg. 24.00**  
19.99





**MAGIX**

**NEW SHADES!  
NEW LOOK!**

**fmg Magix Tint Tinted Moisturizers Radiant (R)**  
Infused with passion fruit, chia and sunflower seed and antioxidant vitamins E and B5 to soothe and keep skin hydrated. Vegan. **Buildable sheer-to-medium coverage with a radiant finish.** 30 ml reg. 20.00 **15.99**

**NEW**

**fmg Magix Tint Tinted Moisturizers Natural (N)**  
Lightweight moisturizing formula with hyaluronic acid, vitamin E and papaya complex enhances complexion and provides instant hydration and antioxidant benefits. **Sheer veil of colour with a natural demi-matte finish.** 30 ml reg. 20.00 **15.99**

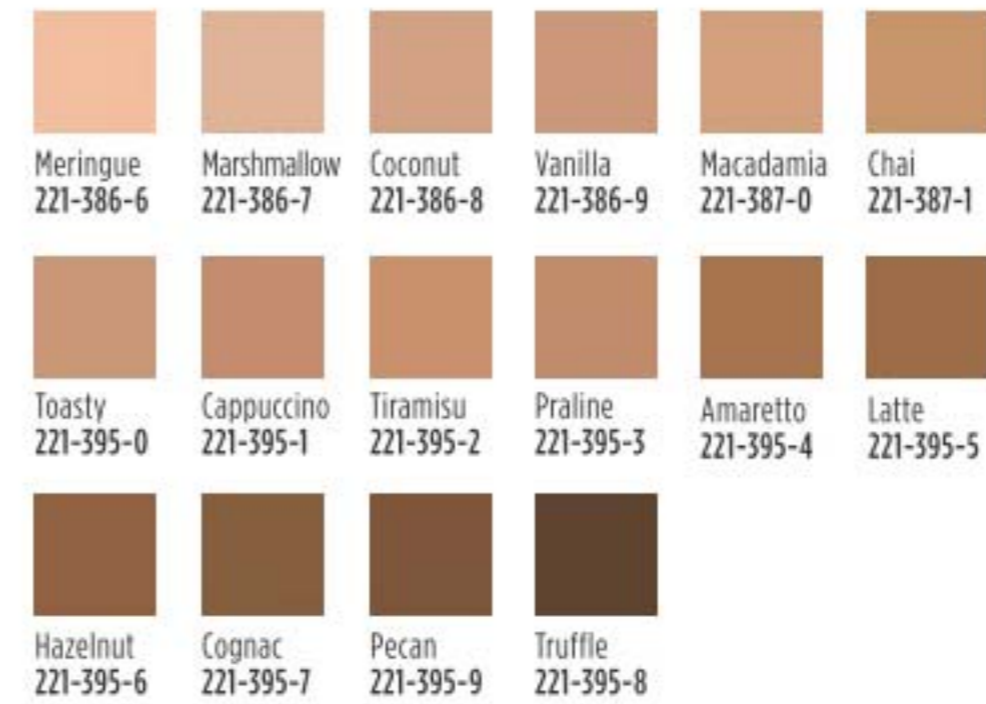


work your  
**magix**



R = RADIANT N = NATURAL

**MAGIX** perfect for all skin tones and types



**Magix Wand Foundation Stick**  
Buildable sheer to full coverage. **Light-as-air, demi-matte finish.** Infused with shea butter and antioxidant vitamin E. Paraben/sulfate/phthalate-free. Vegan. 6 g reg. 23.00 **18.99**



MAKEUP

**NEW**

**fmg Magix Corrector Brightening Perfector**  
Lightweight formula infused with caffeine, soothing marigold and vitamin E to help perfect skin. Won't settle into fine lines. **Buildable sheer-to-medium coverage and a demi-matte finish.** Great for on-the-go touch-ups. 3.2 g reg. 19.00 **14.99**



Fair/Light

Prime + protect with **SPF 20 colourless primer.** **Magix Prime Face Perfector SPF 20 Sunscreen** Oil-free primer preps skin for improved makeup wear. 30 ml **221-300-9** reg. 20.00 **15.99**





**CASHMERE COMPLEXION** with 24 hours of comfortable, breathable wear

Cushiony doe-foot applicator for easy, precise application.



Cannoli (W) 221-448-3	Nougat (W) 221-448-4	Meringue (W) 221-448-5	Shortcake (C) 221-448-6	Buttercream (N) 221-448-7	Marshmallow (N) 221-448-8	Custard (N) 221-448-9	Strudel (C) 221-449-0
Macadamia (W) 221-449-2	Ganache (WO) 221-449-4	Coconut (W) 221-449-1	Cappuccino (N) 221-449-5	Chai (WO) 221-449-3	Vanilla (W) 221-450-0	Toasty (N) 221-449-7	Praline (N) 221-449-9
Tiramisu (W) 221-449-6	Soufflé (N) 221-449-8	Muffin (W) 221-450-1	Gingerbread (C) 221-450-2	Pudding (N) 221-450-3	Amaretto (N) 221-450-4	Latte (W) 221-450-6	Brownie (WO) 221-450-5
						Available in: Cool (C), Neutral (N), Warm (W) and Warm Olive (WO) undertones.	
Hazelnut (W) 221-450-7	Cognac (W) 221-450-8	Pecan (N) 221-450-9	Java (W) 221-451-0	Clove (N) 221-451-1	Truffle (C) 221-451-2		

**Longwear Foundation**

Full, flexible coverage with a matte finish. Blurs pores and fine lines for a smoother complexion. With antioxidant botanical extracts. Ideal for all skin types. Vegan. 30 ml  
reg. 45.00  
**35.00**



@MyAvonCanada

Corrects dark circles and imperfections.

**Longwear Concealer**  
Creamy lightweight texture. Soft focus matte finish. With antioxidant botanical extract. Vegan. 6 ml  
reg. 31.00  
**23.00**

Sugar (W) 221-452-3	Mochi (N) 221-452-4	Cheesecake (C) 221-452-5	Parfait (W) 221-452-6
Macaroon (N) 221-452-7	Tart (WO) 221-452-8	Butterscotch (W) 221-452-9	Waffle (W) 221-453-0
Biscuit (WO) 221-453-5	Tres Leches (N) 221-453-6	Toffee (W) 221-454-0	Cupcake (N) 221-454-8

Available in: Cool (C), Neutral (N), Warm (W) and Warm Olive (WO) undertones.



Tres Leches



MAKEUP

Featured shade: N110

N110 (N) 222-137-5	W110 (W) 222-137-6	W120 (W) 222-137-7	C110 (C) 222-137-8	N120 (N) 222-137-9	W130 (W) 222-138-0
W140 (W) 222-138-2	W150 (W) 222-138-1	W160 (W) 222-138-3	N130 (N) 222-138-4	N140 (N) 222-138-5	W170 (W) 222-138-6
				Available in Cool (C) Neutral (N) and Warm (W) undertones.	
N150 (N) 222-138-7	W180 (W) 222-138-8	N160 (N) 222-138-9	C120 (C) 222-139-0		

**Cashmere Complexion**  
mirror compact and sponge for seamless touch-ups

Luxuriously soft weightless formula with a long-lasting matte finish.

**fmg Compact Powder Foundation**  
Use as foundation or setting powder for buildable medium to full coverage. Amino-acid coated pigments control shine and visibly smooth skin for perfected, all-day wear. With vegan collagen, lavender oil, artichoke and chamomile extracts. 9.5 g  
reg. 52.00  
**42.00**



W150



**fmg Colors of LOVE Kiss Me Cushion**

Skin-loving colour, water-based formula with hyaluronic acid instantly boosts hydration. Antioxidant non-GMO water lily and green tea extracts leave skin feeling silky and nourished. Buildable sheer-to-medium coverage. Cushion compact includes sponge applicator and mirror for on-the-go love. Available in Blush or Highlighter. Each, 8 g  
 reg. 38.00  
**32.00 each**



Sweet Pea

**HIGHLIGHTER**



**BLUSH**



**NEW**

**fmg Colors of LOVE Glow Balm**

Lightweight formula glides on smoothly with skin-loving blend of pomegranate extract, mango and shea butter, vitamins E and C, and avocado oil. 8 g  
 reg. 23.00  
**18.99 each**

**ILLUMINATING STICK**

Ultrafine pearls blend for a soft, natural, radiant glow. Lightweight creamy formula glides on smoothly.



Moonstruck

Glowin' Real Good 222-877-7

**BRONZING STICK**

Create instant radiance, leave skin with a warm, healthy-looking glow.



Heart of Gold



Featured shade: Glow Balm Illuminating Stick in Sparks Flying

# love the glow

light up the room with a skin-loving glow collection that's truly illuminating!



Wild Hearts

Queen of Hearts



**NEW**

**fmg Colors of LOVE Glow Beads Illuminating Powder**

Luminous heart-shaped and round powder beads blend beautifully to create instant radiance. The lightweight formula provides a delicate pearlescent finish on all skin tones. 20 g  
 reg. 42.00  
**35.00**

**NEW**

**fmg Colors of LOVE Heart-Warming Bronzer Matte Mineral Powder**

Skin-loving mineral powder adds effortless warmth to complexion and helps reduce the appearance of shine. Silky matte formula with moisturizing phytosqualane glides on evenly without appearing cakey. Special-effect pigments hug the skin for a lasting bronzed finish. Get a back from the beach, natural-looking tan all year long. Perfect for all skin types. Vegan. 11.8 g  
 reg. 35.00  
**29.00**



My Sunshine 222-940-3

Golden Days 222-940-4

Sunset Kiss 222-940-5



Golden Days



LIPSTICKS

# caress your lips in cashmere

SATIN (S) OR MATTE (M) FINISH



Matte finish

Satin finish



Satin Rich Berry

Matte Rich Berry

ONE LUXE FORMULA.  
TWO FAB FINISHES.  
NINE SEXY SHADES.

Lightweight, soft and comfortable formula caresses lips in luxury with rich vivid pigments for hours of kissable wear.

**fmg Cashmere Lipcream**  
Infused with antioxidant vitamins C and E, shea butter, avocado, and coconut oils to nourish and soften lips. **Satin finish (S) in traditional case and matte finish (M) in chic slimline case.**  
Each, 3.5 g  
reg. 32.00  
**26.00**



Featured shade: Coral Charm



**fmg Cashmere Essence Lipcream**  
Melting balm-like texture glides on effortlessly, wrapping lips in luscious shine and comfort. Enriched with a concentrated blend of anti-aging ingredients, including Bio-Retinol complex, ginseng cell extract, antioxidant meadowfoam seed oil and vitamin E. **Opulent high shine finish with buildable medium-full coverage.** 3 g  
reg. 32.00  
**26.00**



Inner core provides anti-aging hydration and protection

**ANTI-AGING LIPSTICK**  
that combines colour and care for a luxurious experience

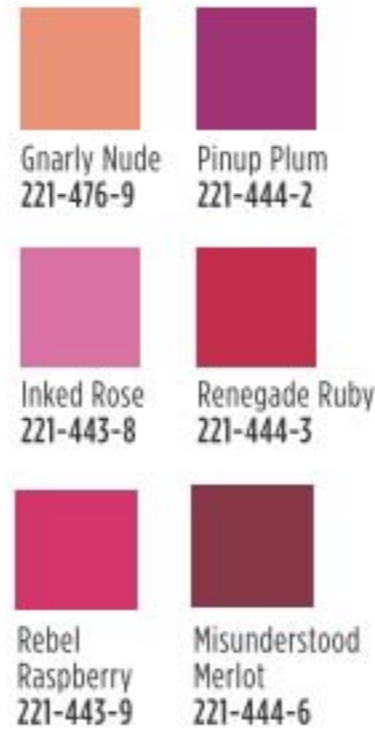


# LIPCOLOUR



## 2-in-1 Lip Tattoo Lip Line & Fill Duo

Semi-permanent lip stain with all-day wear. Infused with sunflower seed oil to help hydrate lips. Paraben/gluten/phthalate/sulfate-free. Vegan. 1.6 ml  
**reg. 19.00**  
**13.99**



Featured shade:  
Glimmerkiss Liquid Lipstick in Ruby.

**Glimmerkiss Liquid Lipstick**  
 Drench lips in vivid sparkling colour in a single swipe. Shimmering gem-like finish. Weightless, silky-smooth gel-cream formula. Water-resistant. Long-lasting wear. Paraben/sulfate/phthalate-free. 2 ml  
**reg. 20.00**  
**13.99**



## Mattitude Soft Matte Liquid Lip

Non-drying formula that lasts for hours. Poppy seed oil and vitamin E nourish and smooth lips. Paraben/sulfate/phthalate-free. 4 ml  
**reg. 19.00**  
**13.99**

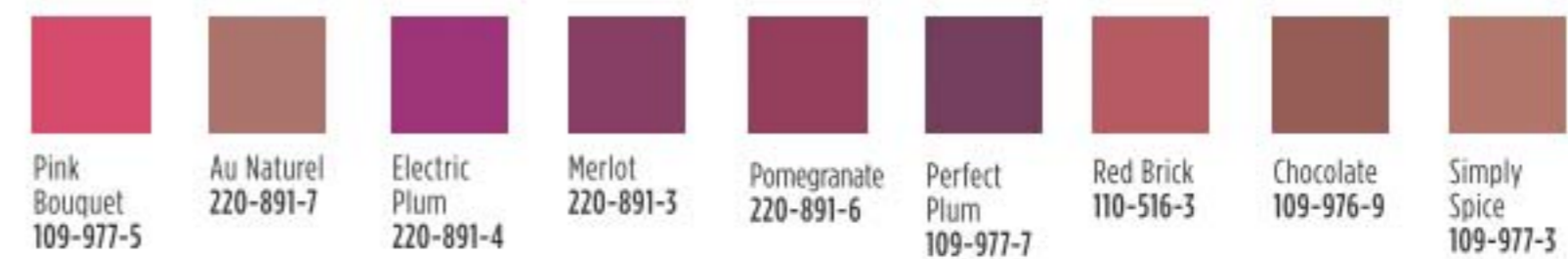


## Avon Crave Lip Gloss

Addictive gourmand scents and ultra shine. Vitamin E formula moisturizes, smooths and softens lips. 9 ml  
**reg. 13.00**  
**8.49**



\*Last time in brochure.



Prevents lipstick from feathering.  
**Avon True Color Glimmersticks Lip Liner**  
 0.28 g  
**reg. 13.00**  
**5.99**



Red Brick





IT'S YOUR TIME TO BLOOM

LYRD layers redefined

**NEW LOOK!**

The essence of lush, glistening blooms in the early morning light.

**LYRD Peony Rosé**  
Eau de Parfum  
*fresh & clean*

A fresh composition of watery florals, a new day unfolds with sparkling notes of dewy peony petals, pink currant, and sheer musk.  
50 ml **223-300-5**  
reg. 42.00  
**28.00**



NEW LOOK! SAME GREAT SCENTS!

**NEW LOOK!**

A bright floral that lets you shine.

**LYRD**  
**Honeysuckle Blossom**  
Eau de Parfum  
*fresh & sweet*

Sparkling notes of delicate apple blossom, lively honeysuckle nectar and radiant vanilla orchid.  
50 ml  
**223-300-7**  
reg. 42.00  
**28.00**





# Soy blend candles

crafted by expert perfumers

Each 3-wick candle gives 30 hours of burn time!



❖ **LYRD Candles**  
11 cm diam. x 8 cm H. Glass/paper/soy blend wax.  
reg. 35.00  
**28.00** each

**Rose Blossom & Musk**

Pink peony, sophisticated rose blossom and soft musk. **222-910-2**

**Juicy Currant & Magnolia**

Juicy currant, sweet rhubarb and blooming magnolia. **222-910-1**

**Violet & Birch**

Delicate violet, crisp birch and warm vanilla. **222-910-3**

**NEW!**

**Peony & Cedar**

Fresh eucalyptus, enchanting peony and white cedar. **222-951-3**

Never leave burning candles unattended. Keep away from children and pets.



**LYRD**  
**Rose du Soleil**  
**Eau de Parfum**  
*fresh & vibrant*  
Radiant notes of sun-ripened raspberry, enchanting rose and spicy patchouli. 50 ml  
**222-611-6**  
reg. 52.00  
**42.00**

**LYRD**  
**Bouquet de Freesia**  
**Eau de Parfum**  
An unexpected mix of sweet freesia, tulip and warm amber. 50 ml  
**222-611-3**  
reg. 52.00  
**42.00**

**LYRD Sparkling Neroli**  
*fresh & vibrant*  
Experience the crisp and vibrant freshness of sparkling neroli, blended with uplifting bergamot and warm musk.  
**Eau de Parfum** 50 ml **222-246-6** reg. 52.00 **42.00**  
**Eau de Parfum Travel Spray** 10 ml **222-428-9** reg. 26.00 **21.99**





legacy. powerful.  
vibrant.

**Gilded Eau de Parfum**  
*fresh & vibrant*

Celebrate the opulence with an exquisite blend of watery rhubarb, violet leaves and rich black currant, transporting you back in time with a modern twist. 50 ml

222-599-3  
reg. 70.00  
55.00



fragrance collection  
**STUDIO  
1886**

Be inspired by the past,  
embrace the present,  
look to the future.



Inspired by Avon's  
135-year heritage, the  
Studio 1886 Collection  
offers a unique fragrance  
journey of the finest perfumery  
ingredients and celebrates fearless  
women throughout every era.



**Gilded**  
Shower Gel 222-697-2  
Body Lotion 222-694-0  
Each, 200 ml  
reg. 28.00  
21.99 each



**XXI**  
Shower Gel 222-697-3  
Body Lotion 222-694-1  
Each, 200 ml  
reg. 28.00  
21.99 each



**Tectopian**  
Shower Gel 222-697-4  
Body Lotion 222-697-1  
Each, 200 ml  
reg. 28.00  
21.99 each

FRAGRANCE



intelligent.  
courageous.  
confident.

**XXI Eau de Parfum**  
*fresh & clean*

Bold and addictive blend that embraces the fearless entrepreneurial women of today with sparkling orange, fresh sage and patchouli, inspiring confidence. 50 ml

222-599-4  
reg. 70.00  
55.00



individuality.  
trendsetter.  
boldness.

**Tectopian Eau de Parfum**  
*fresh & vibrant*

Blurring the lines between the virtual and natural world, this electrifying disruption looks to the future with notes of magnolia, white rose and warm musk. 50 ml

222-598-8  
reg. 70.00  
55.00





## GINZA STEFANY


**Always Beside You  
Eau de Parfum**
*warm & exotic*

Intoxicating notes of orange leaf, tuberose and earthy musk filled the air as Steve and Stefany shared a loving embrace. 50 ml

**222-811-5**  
reg. 74.00  
**62.00**


**In My Arms  
Eau de Parfum**
*fresh & sweet*

Under a sunlit gardenia tree, as notes of black currant and delicate peach filled the air, their undying passion was professed.

50 ml **222-792-2**  
reg. 58.00  
**49.00**


**Wish You Were  
Here Eau de Parfum**
*fresh & clean*

Be transported back in time with our lovers to a quiet, dewy meadow at dawn where fragrant notes of sweet hawthorn berry, ripe pear and sensuous patchouli filled the air. 50 ml

**222-792-1**  
reg. 58.00  
**49.00**

# GINZA STEFANY

Long ago, a traveller from afar fell in love with an elegant beauty in the bustling Ginza district of Tokyo. A chance encounter to forbidden passion and heartbreaking distance, their love endures through hundreds of letters. Follow Steve and Stefany's exchange of captivating letters and experience the romance as their love blossoms.



# Haiku Intense

Create a sense of harmony and elegance with tranquil clean notes.

**NEW**

**Haiku Intense Eau De Parfum**  
*fresh & clean*

An airy floral evoking the serenity of a beautiful garden oasis, blooming with Japanese yuzu, delicate muguet and blonde woods. 50 ml **222-619-6**  
reg. 45.00

**34.99**

**Travel Spray**

10 ml **222-952-4**  
reg. 22.00

**18.99**



## HAIKU ESSENTIALS COLLECTION

FRAGRANCE

**NEW**

**Haiku Kyoto Flower Intense Eau De Parfum**  
*fresh & clean*

Surrender your senses to a tranquil garden of pure bliss. Delight in an elegant, potent bouquet of violet leaf, white peony and soft cotton musk. 50 ml **222-619-7**

reg. 45.00

**34.99**

**NEW**

**Haiku Sacred Intense Eau De Parfum**  
*fresh & clean*

Inspired by the alluring contrast of freshness and warmth, discover a divine blend of uplifting tangerine, rose de mai and earthy driftwood, balancing the beauty of nature. 50 ml

**222-672-0**

reg. 45.00

**34.99**

**Luxury Body Crème**

150 ml **222-621-6**

reg. 33.00

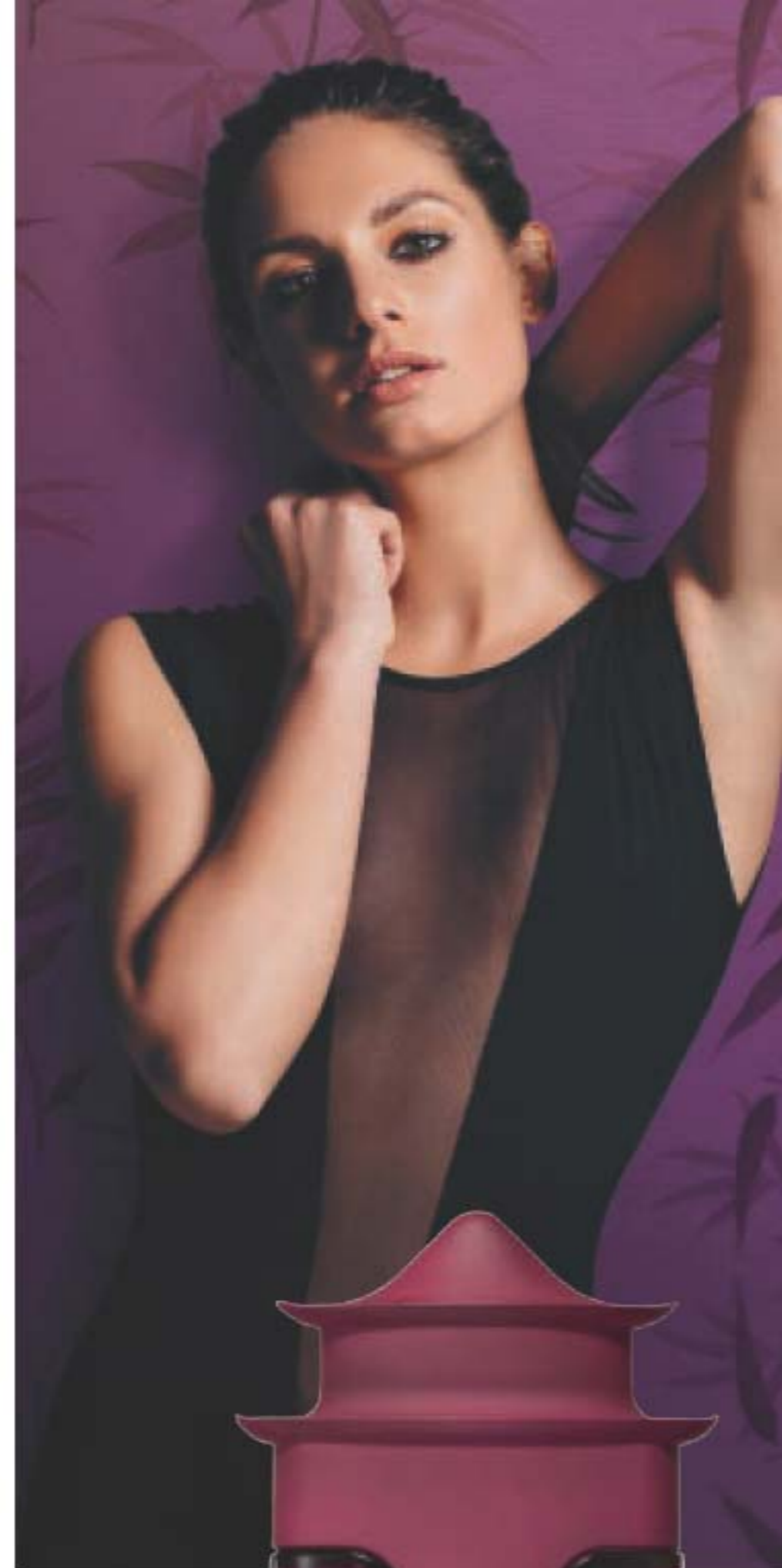
**26.99**

**Luxury Body Wash**

200 ml **222-950-6**

reg. 30.00

**21.99**





# Haiku

The original Haiku fragrances you know and love!



A cool and balanced moment of mindfulness.

**Haiku Reflection**  
Eau de Parfum  
*fresh & clean*

Radiant water accord, acacia blossom and amber wood.  
50 ml **115-861-8**  
reg. 35.00  
**22.99**

A fresh airy floral that's the essence of enlightenment.

**Haiku Eau de Parfum**  
*fresh & clean*

Japanese yuzu, delicate muguet and blonde woods.  
50 ml **220-269-8**  
reg. 35.00  
**22.99**

A tranquil garden of pure bliss.

**Haiku Kyoto Flower**  
Eau de Parfum  
*fresh & clean*

Violet leaf, white peony and soft cotton musk.  
50 ml **435-140**  
reg. 35.00  
**22.99**



FRAGRANCE



## Lather. Scent. Repeat.

Luxurious shampoo in a fave classic Avon scent for the ultimate sensory shower experience.

**NEW**

Create your me moment with a harmonious blend of Japanese yuzu, delicate muguet and blonde woods.

### Haiku Shampoo

Beautifully scented rich, nourishing lather cleanses and protects without weighing hair down for ultimate volume. Lightweight formula leaves hair feeling soft and looking healthy and vibrant. Formulated to be gentle on all hair types. 350 ml  
**222-950-9**  
reg. 19.00  
**15.99**



# RARE EDP collection

Show off every facet of your beauty!

**Rare Amethyst  
Eau de Parfum**  
*warm &  
indulgent*

Sweet plum,  
blooming violet  
and sandalwood.

50 ml

102-456-8

reg. 35.00

22.99

**Rare Pearls  
Eau de Parfum**  
*warm & dreamy*

Shimmering  
magnolia, white  
pepper and  
rosewood.

50 ml

102-457-0

reg. 35.00

22.99

**Rare Diamonds  
Eau de Parfum**  
*warm & dreamy*

Sparkling  
plum blossom,  
diamond orchid  
and cashmere  
woods. 50 ml

106-258-0

reg. 35.00

22.99

**Rare Gold  
Eau de Parfum**  
*warm &  
indulgent*

Mandarin zest,  
ylang-ylang and  
golden amber.

50 ml

102-456-9

reg. 35.00

22.99

Packaging may vary.



FRAGRANCE



## LUXE UP your shower

✦ **Rare Pearls Shampoo**

Luxurious shampoo in the classic Rare Pearls scent. The rich, nourishing lather cleanses and protects without weighing hair down. Formulated to be gentle on all hair types. 350 ml

222-950-3

19.00 or...

**ONLY  
9.99**

WITH EVERY RARE EDP  
PURCHASE FROM PAGE 62



## FAR AWAY COLLECTION bring out your inner wanderlust

Enjoy the exotic blend of freesia, sheer jasmine and enticing amber with every hair toss.

### Far Away Shampoo

Beautifully scented rich, nourishing lather cleanses and protects without weighing hair down for ultimate volume. Lightweight formula leaves hair feeling soft and looking healthy and vibrant. Formulated to be gentle on all hair types. 350 ml  
**222-950-0**  
reg. 19.00  
**15.99**



Bask in a golden dream of intoxicating far-off lands.

### Far Away Gold Eau de Parfum

*warm & exotic*  
Rich Mohéli ylang-ylang, Indian jasmine and seductive Madagascar vanilla. 50 ml  
**453-015**  
reg. 35.00  
**22.99**



A sweet and luminous escape, filled with infinite possibilities.

### Far Away Infinity Eau de Parfum

*fresh & sweet*  
Bright marigold, Indian jasmine sambac and vanilla. 50 ml  
**122-508-4**  
reg. 35.00  
**22.99**



A blend of warm spices transports you to the exotic and beyond.

### Far Away Eau de Parfum

*warm & exotic*  
Warm peach, jasmine, spiced amber and spirit-moving woods. 50 ml  
**220-222-6**  
reg. 35.00  
**22.99**



## IT'S BACK LIMITED EDITION

### Far Away Amalfi Eau de Parfum

*fresh & vibrant*  
This solar citrus-floral transports you with notes of Italian bergamot and orange flower, highlighted with coastal tuberose. 50 ml  
**221-839-9**  
reg. 35.00  
**24.99**



# Seductive scents

Perfect for the woman who wants a scent as seductive and alluring as she is.



### Imari Seduction Eau de Toilette

*warm & indulgent*  
Plum, purple orchid, vanilla, amber and musk. 50 ml  
**220-270-2**  
reg. 35.00  
**22.99**

### Imari Eau de Toilette

*warm & exotic*  
Radiant bergamot, opulent jasmine and vanilla orchid. 50 ml  
**222-370-1**  
reg. 35.00  
**22.99**



## LUXURY SCENTS

### Live Out Loud Eau de Parfum *fresh & vibrant*

A free-spirited expression of sweet wild strawberry, sparkling mimosa and comforting fluffy vanilla. 50 ml **221-142-5**  
reg. 56.00  
**35.00**



Your beautiful love story begins with you

### Today Eau de Parfum *fresh & clean*

Joyful notes of hibiscus and silk musk. 50 ml **836-39**  
reg. 42.00  
**32.00**



**Velvet**  
Eau de Parfum  
*warm & indulgent*  
Luscious Mediterranean fig, pomegranate, sumptuous Bulgarian rose and warm velvet patchouli. 50 ml **220-473-7**  
reg. 42.00  
**30.00**

Perfectly poised, yet mysteriously intriguing.

### Avon Prima Noir Eau de Parfum

*warm & indulgent*  
Violet, jasmine and creamy vanilla noir. 50 ml **119-733-8**  
reg. 42.00  
**28.00**

An elegant embodiment of strength and grace.

**Avon Prima**  
Eau de Parfum  
*warm & dreamy*  
Plum, rose and white patchouli. 50 ml **122-508-3**  
reg. 42.00  
**28.00**



# Sexy & sophisticated

Fruity accents combined with slightly woody notes give this fragrance a strong personality with a touch of mystery.



### KATE Eau de Toilette *fresh & vibrant*

Notes of watermelon, fresh ginger, jasmine, peony sandalwood and musk. 50 ml **222-436-2**  
reg. 40.00

**LIMITED TIME OFFER**  
**30.00**



# Classic scents

that are tried-and-true favourites!

**Free O<sub>2</sub> Eau de Toilette**  
*fresh & clean*

Refreshing white peach tea, airy honeysuckle and musk. 50 ml  
**222-618-9**  
**26.00 or...**

**Candid Cologne**  
*warm & exotic*

Bergamot, tuberose and patchouli. 50 ml  
**110-321-3**  
**26.00 or...**

**Night Magic Cologne**  
*warm & exotic*

Neroli, jasmine and musk. 50 ml  
**110-300-9**  
**26.00 or...**

**Odyssey Cologne**  
*warm & dreamy*

Muguet, ylang-ylang and warm oakmoss. 50 ml  
**110-321-2**  
**26.00 or...**

**Timeless Cologne**  
*warm & exotic*

Bergamot, jasmine and patchouli. 50 ml  
**110-373-1**  
**26.00 or...**



**CHOOSE  
ANY 2 FOR  
25.00**

**PAGES 68-69**

To get the 2 FOR price,  
please order in multiples of 2.



# Rich & creamy

Luxurious, long lasting scents with rich emollients.

**Perfumed Skin Softener**  
150 ml  
Sweet Honesty 222-623-0  
Haiku 222-702-2  
Imari 222-701-8  
Far Away 222-702-0  
Timeless 222-623-1  
Odyssey 222-623-4  
Candid 222-623-3  
Night Magic 222-623-2  
reg. 12.00  
**5.99 each**



# Scented body lotions

Leaves skin soft, smooth and lightly scented.



FRAGRANCE



**Body Lotion**  
200 ml  
Far Away 382-962  
Haiku 155-600  
Rare Pearls 102-953-3  
reg. 17.00  
**8.99 each or...**

**CHOOSE ANY 2 FOR 14.99**  
PAGE 71

To get the 2 FOR price, please order in multiples of 2.



# Gentology for men

Herb & aloe total care. No parabens or mineral oil. Dermatologist-tested.

head-to-toe  
clean



**2-in-1 Hair and Body Wash**  
Washes away dirt and sweat without over drying. Aloe and natural herbal extracts help to calm and soothe, refresh, energize, and deodorize.  
300 ml **222-371-8**  
reg. 23.00  
**18.99**

one-and-done  
moisturizer



**Total Care Moisturizer**  
Convenient lotion/essence formula tones, moisturizes, helps visibly brighten and smooth wrinkles all in one. Use AM/PM on face, neck and body after cleansing and shaving. With aloe, herbal and citrus extracts, and niacinamide. 150 ml  
**222-371-7**  
reg. 23.00  
**18.99**

# Enhance his grooming routine



**Studio 1886 Legendary Eau de Toilette**  
*fresh & aromatic*  
Vibrant lemon eases into crisp lavender for a fresh faceted opening. Notes of patchouli and salted amber provide complexity and depth, revealing exquisite ingredients for a memorable fragrance experience. 50 ml  
**222-706-0**  
reg. 70.00  
**55.00**

**Studio 1886 Legendary All-In-One Gel Moisturizer**  
Lightweight gel moisturizer that softens beard hair and helps to soothe irritated skin after shaving.  
150 ml **222-906-0**  
reg. 28.00  
**21.99**

**Studio 1886 Legendary All-in-One Hair & Body Wash**  
Richly lathering formula that leaves hair and skin feeling clean and lightly scented.  
200 ml **222-847-3**  
reg. 28.00  
**21.99**



## FREE GIFT!

All-in-One Gel Moisturizer try-it size (30 ml) with every Studio 1886 Legendary purchase. In case of unforeseen demand, Avon reserves the right to substitute products of equal or greater value.



## MEN'S FRAGRANCE capture his spirit

### LIMITED EDITION

**Wild Country  
Aftershave Splash**  
Leaves skin feeling  
smooth after shaving  
and lightly scented.  
118 ml **222-574-4**  
reg. 19.00  
**14.99**

splash on face  
and neck after  
shaving



## MEN'S FRAGRANCE effortlessly cool

**Black Suede  
Aftershave  
Conditioner**  
100 ml  
**222-701-5**  
reg. 12.00  
**5.99**



FRAGRANCE

# Wild Country

A rugged blend  
of lavender,  
coriander seed  
and sandalwood.

**Wild Country Duo**  
*fresh & aromatic*

Include:

- **Cologne**  
88 ml
- **Hair & Body Wash**  
150 ml

**896-344-2**  
**2-PIECE PACK**  
**19.99**



VALUE  
44.00

# Black Suede

Fresh aromatic  
notes of bergamot,  
soft leather and  
oak moss.

**Black Suede Duo**  
*fresh & aromatic*

Include:

- **Eau de Toilette**  
100 ml
- **Hair & Body Wash**  
150 ml

**896-371-8**  
**2-PIECE PACK**  
**19.99**



VALUE  
44.00





**Mesmerize Cologne**  
*warm & intoxicating*  
 Bergamot, spicy  
 cardamom and  
 amber. 100 ml  
**222-370-2**  
 reg. 35.00  
**22.99**



**Mesmerize Black  
 Eau de Toilette**  
*warm & intoxicating*  
 Pepper, addictive  
 nutmeg and tonka  
 bean. 100 ml  
**108-628-3**  
 reg. 35.00  
**22.99**



**Alpha  
 Eau de Toilette**  
*fresh & aromatic*  
 Charismatic  
 verbena, spiced  
 cardamom  
 and refined  
 cedarwood.  
 100 ml  
**104-118-3**  
 reg. 35.00  
**22.99**



**Exploration  
 Eau de Toilette**  
*fresh & clean*  
 Volcanic orange,  
 fresh rosemary  
 and driftwood.  
 75 ml  
**122-508-2**  
 reg. 35.00  
**22.99**



**Prime  
 Eau de Toilette**  
*fresh & clean*  
 Lavender,  
 spearmint  
 and cedarwood.  
 75 ml **114-322-0**  
 reg. 35.00  
**22.99**



**Attract and enlighten**  
 with this modern fresh cologne



**Perceive  
 Cologne**  
*fresh & clean*  
 Citrus, earthy sage  
 and cedarwood.  
 100 ml **831-73**  
 reg. 35.00  
**22.99**



# THE BEAUTY COLLECTIVE

We're dedicated to bringing you a portfolio of *world-class brands*, each with a curated collection of the *most innovative, on-trend beauty products* available. Whether you're looking for prismatic primers, luxury makeup or cutting-edge skin care, we've got the *best of the best*.



## MISSION LUXEREVE

Special fermentation technologies derived from natural ingredients

### CYTOFERM

Combines 86 different plants, harvested over four seasons for peak potency, then fermented for another year to achieve maximum efficacy to help promote the look of smooth, radiant skin.

### WINEFERM

A wine extract from naturally fermented grapes, which have a higher content of polyphenols than unfermented grapes, and are rich in antioxidants to keep skin looking healthy.

### MISSION LUXEREVE CREAM

Enriched with luxurious oils and other moisturizing ingredients, this indulgent cream helps skin look smoother, firmer and radiantly healthy, for a more youthful, sculpted appearance. Use after Mission Luxereve Serum. 50 g **222-577-0**  
reg. 400.00

NOW  
**\$330**

### MISSION LUXEREVE SERUM

A deluxe rejuvenating serum formulated to help boost skin elasticity and firmness for the smoothest, most youthful-looking skin ever. Use after cleansing and before moisturizing with Mission Luxereve Cream. 30 ml **222-577-1**  
reg. 260.00

NOW  
**\$220**





# MISSION LUXEREVE

Special fermentation technologies derived from natural ingredients



**NEW**

## MISSION LUXEREVE EYE CREAM SET

Anti-aging eye care set includes:

- **Eye Cream**  
Luxurious yet lightweight hypoallergenic cream helps visibly restore firmness and elasticity around the eyes. 15 ml
- **Rose Quartz Eye Massagers**  
Set of natural stone massagers soothes and cools eye area, and helps relieve fatigue for a refreshed look. Ergonomically designed. Each, 3.5 x 3.75 cm

222-909-8  
reg. 255.00  
NOW  
**\$205** the set



**NEW**

## MISSION LUXEREVE FOAMING WASH SET

Deluxe set include:

- **Full-size Foaming Wash**  
Rich foamy lather effectively removes pore-clogging impurities while leaving feeling clean, moisturized and refreshed. 150 ml
- **Try-it-size Essence**  
Preps skin for the Mission Luxereve regimen with the power of natural fermentation while it deeply hydrates and smooths skin. Follow with Mission Luxereve Serum. 20 ml

222-909-5  
reg. 110.00  
NOW  
**\$90** the set

## MISSION LUXEREVE SERUM GIFT SET

Deluxe 3-piece collection includes:

- **Full-size Luxereve Serum**  
30 ml
- **Half-size Luxereve Cream**  
25 g
- **Blue Aventurine Rolling Face Massager**

Made from 100% Brazilian blue aventurine. Helps stimulate circulation and promote absorption of serum, and cream to help visibly firm and tighten as it cools skin.

10 x 4 cm 222-909-9  
reg. \$260  
NOW  
**\$220**  
the set



## MISSION LUXEREVE ESSENCE SET

Deep hydration to prep skin for the Mission Luxereve regimen as it enhances the regimen's rejuvenating power and smooths skin. Deluxe skin care collection includes:

- **Full-size Essence**,  
Use AM/PM after cleansing and before Mission Luxereve Serum and Cream. 110 ml
- **Try-it-size Serum**, 7 ml
- **Try-it-size Cream**, 5 g

222-825-7  
reg. 125.00  
NOW  
**\$100**  
the set







**88%**  
of people  
felt skin  
feels softer  
and more  
elastic in  
1 week\*

**NEW**  
**the true serum**  
**revitalizing**  
niacinamide/amino  
acids solution 10%

**For elasticity, loss of firmness  
and the look of pores**

This powerful serum with niacinamide amino acids solution and a special blend of herbs helps shrink the look of pores for a smoother appearance. Rose hip oil helps boost collagen for visibly firmer skin. Apply after cleansing and follow with your favourite belif moisturizer.

50 ml **222-486-6**  
**65.00**



**Niacinamide (vitamin B3)**  
Helps visibly improve enlarged pores while controlling excess oil.

**Amino acids solution**  
Helps to improve uneven skin texture and reduce pore size.

**NEW**  
**the true serum**  
**resurfacing**  
PHA/AHA 10%

**For dullness and uneven  
tone and texture**

With PHA + AHA 10%, this potent serum helps gently and effectively exfoliate dead surface skin cells to visibly improve skin tone and texture and reveal a fresher, more youthful appearance. Honeysuckle helps energize skin for a more radiant look. Apply after cleansing and follow with your favourite belif moisturizer. 50 ml

**222-486-8**  
**65.00**

**PHA (polyhydroxy acid)**  
Helps to gently exfoliate while supporting skin's moisture barrier.

**AHA (alpha hydroxy acid)**  
Helps to slough away dead cells and visibly diminish discoloration.

**92%**  
of people felt  
skin texture  
feels to have  
improved  
in 1 week\*



\*Based on a consumer-perception study.





- NO synthetic dyes
- NO synthetic fragrances
- NO mineral oil
- NO animal products
- NO parabens
- NO sulfates
- NO phthalates



### the true cream aqua bomb

70% increase in hydration\*

**For dryness, dullness and uneven texture**

This ultralight, water-based, refreshing gel cream bursts upon application to instantly cool skin and release a flood of weightless moisture. Helps visibly improve skin elasticity. Skin looks healthy, smooth and supple. Suitable for sensitive skin.

Full size, 50 ml <b>222-400-9</b> 50.00	Try-it size, 25 ml <b>222-401-2</b> 29.00
---	---



### the true cream moisturizing bomb

26 hours of intense hydration\*

**For dryness, loss of elasticity and firmness**

This lightweight yet indulgent cream, with a comforting, cushiony, whipped texture, envelops skin with intense, long-lasting moisture. Skin looks and feels smooth, supple and deeply nourished. Suitable for sensitive skin.

Full size, 50 ml <b>222-401-6</b> 50.00	Try-it size, 25 ml <b>222-401-7</b> 29.00
---	---



### aqua bomb jelly cleanser

97% of women felt it was gentle while cleansing\*\*

**For dryness, dullness and uneven texture**

Jelly-to-foam. Explosive hydration like True Cream Aqua Bomb. Amino acids and glycerin-based cleansing agents gently remove makeup without stripping skin of moisture. 160 ml **222-316-8**

34.00



### moisturizing eye bomb

26 hours of moisture around eye area\*

**For dryness, loss of elasticity and firmness**

This lightweight, refreshing eye cream cools on contact and helps keep eye area firm, resilient and smooth for crease-free makeup application. 25 ml **222-319-0**

60.00

\*Based on a clinical study.  
\*\*Based on a consumer-perception study.





**SET OF 2**  
one travel size  
spray + refill

for an extra  
boost of  
hydration

**NEW**

**belif aqua  
bomb mist**

**pH balancing for  
oil-water levels**  
Ultra-fine, soft, and  
lightweight cooling mist  
hydrates skin for a radiant,  
healthy glow. Travel size  
with refill. Use throughout  
the day under or over  
makeup whenever needed.  
Each, 60 ml **222-917-1**  
**45.00** set of 2



an enticing walk  
in the woods

**NEW**

**the woods  
eau de parfum**

**fresh + sweet**  
Invigorating floral greens  
transport you into the  
woods, where belif  
discovered the secrets of  
herbal remedies. A burst of  
lemon zest and dewy bamboo,  
intensified with fresh-picked  
pear blossom and water lily,  
is wrapped in the sophisticated  
warmth of amber and musk for  
a fresh, revived feeling.  
50 ml **222-921-0**  
**reg. 80.00**  
**65.00**



for dull, dry and  
fatigued skin

**NEW**

**belif aqua bomb  
sleeping mask**

**Jelly pudding-like texture**  
Replenishes with explosive hydration  
for smoother, more supple-looking  
skin and a healthy glow. Use after or  
instead of moisturizer. Rinse off in AM.  
75 ml **222-916-5**  
**45.00**



large  
75 ml



a refreshing  
burst of spring!

**the garden  
eau de parfum**

**fresh + vibrant**  
Opening with notes of sparkling citrus  
and sweet berry, dewy spring blossoms  
and white flower entwine to capture  
nature's vitality. Smooth white musk and  
woods are wrapped in an earthy base  
for an unforgettable fragrance with a  
bright, fresh feeling. 50 ml **222-914-1**  
**reg. 80.00**  
**65.00**





# belif x VDL

Free of mineral oils, synthetic fragrances and dyes.



## Aqua Bomb Glow Water Cream

Water-based formula envelops skin for instant hydration and glow. Silky cream texture absorbs smoothly into skin and visibly evens tone, creating the perfect luminous base for makeup. Free of mineral oils, synthetic fragrances and dyes. Vegan. 75 ml  
**222-464-4**  
 reg. 94.00  
**79.00**

## Glow Moist Primer

Water-gel serum with hydrating micropearls quench dry skin, fill and smooth the look of fine lines and pores, leaving a dewy glow and soft veil finish. Hydro-magnet ingredients help to prep skin so makeup grips and holds for improved wear. Vegan. 30 ml  
**222-464-6**  
 reg. 70.00  
**59.00**

## Glow Moist Fix & Mist

Weightless 2-in-1 setting spray primes and preps skin and then sets makeup for a naturally radiant finish. Ultrafine mist with hydrating ingredients, keeps makeup smudge-proof and looking fresh, even in high humidity. Non-greasy, non-sticky sheer formula absorbs and dries quickly. Use prior to makeup for dewy glowing skin and then to set and refresh makeup throughout the day. 100 ml  
**222-464-8**  
 reg. 65.00  
**54.00**

# VDL + PANTONE™

Colour of the Year 2021



TRY THEM ALL AND FIND ONE THAT'S PERFECT FOR YOU!

## NEW

### VDL + Pantone™ Skin Illuminating Primer Trial Kit

Beloved lumilayer, rosy and mattifying primers that correct, even, brighten and smooth skin, in trial-sizes. Great for on-the-go!

- Lumilayer Primer (glass-skin effect)
- Lumilayer Primer Fresh (hydrating glow essence)
- Lumilayer Rosy Perfect Primer (rosy vitality)
- Satin Veil Primer (mattifying)

Each trial-size primer, 5 ml  
**222-987-2**  
 reg. 62.00  
**50.00** the 4-piece boxed set

PANTONE IS THE GLOBAL AUTHORITY ON COLOUR.





# EYESHADOW PRIMER

Stay fix system extends the wear of eye makeup for an all-day creaseless, smudge-proof vivid look.



**Original**  
222-935-0  
Great for your everyday basic makeup routine.

**Serenity**  
222-935-1  
Great for matte shadows or to brighten dull eyes.

**Shimmer**  
222-935-2  
Great alone or to give your shadow extra oomph.

**VDL Expert Color Primer for Eyes**  
Enhances shadow shades for a more vibrant, brighter result. Infused with skin-caring Tahitian black pearl powder and silk protein. 6.5 g  
reg. 35.00  
**28.00 each**

# PRIMERS

with VDL Lumilayer Technology™

**VDL Lumilayer Rosy Perfect Primer**  
For a velvety smooth, healthy-looking and radiant complexion. Instantly moisturizes, blurs pores and corrects skin tone. Locks down and extends the wear of base makeup. Infused with skin caring damask rose water, rose enfleurage oil, and lady's mantle.  
30 ml **222-935-3**  
reg. 60.00

**VDL Lumilayer Primer**  
Enhances the wear of foundation for a long-lasting silky texture. Visibly brightens, plumps and sculpts the look of skin for added dimension and volume. Can be worn alone, under foundation, or as a sheer highlighter.  
30 ml  
**222-306-8**  
reg. 58.00

**VDL Lumilayer Primer Fresh**  
Sparkling blend of pearls reflect light to create a warm radiant glow. Over 70% moisturizing essence for continuous all-day hydration and smooth skin. 30 ml **222-306-9**  
reg. 58.00



**LIMITED TIME OFFER 40.00 each**





Soothe skin with nature's  
miracle moisturizer

# ALOE VERA

Sourced from the pristine Korean island of Jeju, known for its fertile volcanic soil and lush flora, south of the Korean peninsula, this natural wonder is a natural skin smoother.

## NEW

### A. Jeju Aloe Fresh Soothing Mist

Instantly soothing and cooling facial mist for face or body, with 90% aloe vera extract. Oil-free and quickly absorbed. After cleansing, spray wherever skin feels dry. 130 ml

**222-337-3**

reg. 23.00

**18.99**

## NEW

### B. Jeju Aloe Fresh Ice Soothing Face Mask

Moisturizing gel-cream face mask with Jeju aloe extract. Can be refrigerated for enhanced cooling. Soothes sun irritation. Refreshing and non-sticky. Apply sheet mask after cleansing, leave on for 10 minutes and gently pat remaining cream into face. One single-use mask.

**223-093-6**

reg. 6.00

**5.00**

### C. Jeju Aloe 99% Fresh Soothing Gel

With 99% aloe vera extract and infused with 9 other soothing herb extracts: chamomile, spearmint, lemon balm, rosemary, lavender, bergamot, basil, sage and oregano. Non-sticky absorption, suitable for face and body. 300 ml

**222-337-2**

reg. 13.00

**9.99**



thoroughly  
hydrates  
and soothes  
complexion

C

## NEW

### D. Jeju Aloe Fresh Ice Soothing Gel

3-in-1 gel with aloe vera extract. Use as a moisturizer, soothing after-sun care or as a facial mask. **Can be refrigerated for a more effective soothing result especially during hot summer days.** Apply to dry, sensitive, areas of face and body. 300 ml

**223-093-5**

reg. 16.00

**12.99**

D

3-in-1 benefits:  
moisturizing,  
soothing  
and cooling



## RICE WATER CLEANSING

Rice water, the milky white water obtained from rinsing rice, is enriched with vitamins A, B and E, ceramide and minerals to help skin feel moisturized and look radiant.

**NEW**

### Bright Rice Bran Gentle Exfoliating Cleanser

Daily scrub with organic rice bran powder, rice bran oil and hydrated silica for gentle exfoliation to remove impurities and help skin feel soft and look fresh and radiant. 300 ml  
**223-093-3**  
 reg. 23.00  
**19.00**



### Bright Cleansing Facial Wipes

Refreshing at home and on the go. With rice extract to moisturize while cleansing. Removes eye makeup. 50 wipes.  
**221-900-8**  
 reg. 16.00  
**13.00**



### Bright Foaming Cleanser

Cleanses and moisturizes in one. Lathers up into a creamy foam. With rice water and soapwort extract that leave skin looking clear and bright. 300 ml  
**221-900-0**  
 reg. 19.00  
**16.00**



## MANGO SEED ADVANCED

Dermatologist-tested.  
 Naturally-derived ingredients.  
 Vegan and paraben-free skin care.

**Radiant Moisturizing Oil**  
 Multi-use facial oil helps to hydrate while creating a protective barrier. Suitable for dry skin. Use AM/PM. Lightweight. Apply 1 to 2 drops, tap lightly to promote absorption. Formulated without 6 parabens\*. 40 ml  
**221-939-8**  
 reg. 45.00  
**36.00**

**Moisturizing Butter**  
 Nutrient-dense butter gives skin a dewy, radiant glow. Suitable for dry skin. Use AM/PM. Non-greasy. Formulated without 6 parabens\*. 50 ml  
**221-939-9**  
 reg. 45.00  
**36.00**



**MOISTURIZING OIL**  
 can also be applied to dry elbows, knees and hair

\*6 Parabens (Methyl; Ethyl; Propyl; Isopropyl; Butyl, Isobutyl)paraben).

**The Solution Face Mask**  
 Single-use sheet mask. Feels light as air. Hugs face snugly and comfortably. Semipermeable to help skin absorb ingredients. No parabens.  
 reg. 3.50  
**3.00 each**



**NOURISHING**  
 with propolis extract  
**222-242-9**

**FIRMING**  
 with collagen  
**221-967-3**

**PORE CARE**  
 with tannins  
**222-242-8**



# THE FACE SHOP

		
Be My Pink 221-902-7	London Red 221-902-5	Fluffy Pink 221-903-2
		
Solar Beige 221-902-9	Mellow Coral 221-903-0	Scarlet Red 221-903-1
		
Cassis Red 221-902-6	Darjeeling Red 221-902-2	



## Flat Velvet Lipstick

Flat tip shapes, lines, contours and fills lips effortlessly. Powdery, velvet matte finish. Visibly smooths fine lines. Infused with soothing calendula oil. 1.4 g

reg. 17.00  
**14.00**

Discover your lipstick formula and shade at [avonlipmatch.ca](http://avonlipmatch.ca)

		
Vintage Pink 221-903-5	Rose & Rose 221-903-6	Tropical Pink 221-903-7
		
Fiesta Red 221-903-9	Love Me Red 221-904-0	
		
About Coral 221-903-8	Chestnut Brown 221-904-2	



liquid lip stain glides on sleek and dries down to a silky soft matte finish

**Ink Lip Tint Tattoo Matte**  
Lightweight, long-lasting liquid lip stain with vivid colour. Glides on sleek, dries down to a silky-soft matte finish. 5 g  
reg. 25.00  
**20.00**

Package labels may vary.

# EASY OMBRÉ

vivid shades with complementary combinations



Featured shade:  
Purple with Beige

	
Purple with Beige 222-466-6	Beige Effect 222-466-5
	
Pink Delight 222-466-3	Double Up Pink 222-466-4
	
Orange Meets Red 222-466-1	Brown Effect 222-466-2

## Flat Two-Tone Lipstick

Slim two-tone lipstick creates a gorgeous natural gradient ombré look in a single stroke. Unique flat tip for precise, smooth application. Blends easily with a shiny gloss finish. Paraben-free. 1.3 g  
reg. 23.00  
**19.00**



# MAKEUP REMOVER

Moisturizing dual-oil and water leaves skin fresh and clean.



## Waterproof Lip & Eye Makeup Remover

Gently removes even the most stubborn waterproof makeup. Infused with moisturizing oils. Mineral/talc/paraben-free. Shake well to activate. 110 ml  
**222-381-9**  
 reg. 17.00  
**14.00**

- |   |   |
|---|---|
| <br>Blonde<br>222-316-9       | <br>Dark Brown<br>222-317-2   |
| <br>Light Brown<br>222-317-0 | <br>Black Brown<br>222-317-4 |
| <br>Brown<br>222-317-1       | <br>Dark Grey<br>222-317-3   |

**Tattoo Station Proof Brow Pencil**  
 Softly defines and fills in brows for an all-day, long-lasting natural, perfected look. Powdery, light and silky finish. No clumping or flaking. Waterproof. Applies smoothly. Spoolie on end. 0.5 g  
**reg. 15.00**  
**11.00**



Featured shades:  
 Brow Pencil and Pomade in Dark Brown

# ARCH SUPPORT



## Tattoo Station Proof Brow Pomade

24 hours of waterproof wear. Brows go from soft and natural to bold and defined in seconds. Creamy formula with rich pigments glides on weightlessly to fill in brows as it boosts colour. Matte finish. Dual-ended applicator with angled tip brush and spoolie grooms and applies with precision, 11 cm L. 4 g  
**reg. 33.00**  
**27.00**

- |  |   |  |   |  |
|--|---|--|---|--|
| <br>Blonde<br>222-316-2 | <br>Brown<br>222-316-5 | <br>Dark Brown<br>222-316-6 | <br>Black Brown<br>222-316-7 | <br>Grey Brown<br>222-316-4 |
|--|---|--|---|--|



includes dual-ended applicator

Blonde



unique cushion makes application easy, foundation looks light, not cakey

**Ink Lasting Cushion Foundation Slim Fit**

Smooth, natural matte finish. Buildable medium-to-full coverage. Infused with niacinamide to visibly brighten and even skin tone. Weightless feel, no caking. Antibacterial applicator and mirror included. 15 g  
reg. 45.00  
**35.00**



Fair Light

LIGHT	MEDIUM	DEEP
 C10 Neutral Ivory 221-897-5	 C30 Medium Tan 221-898-4	 C50 Tan 221-899-4
 N10 Porcelain 221-896-4	 W30 Medium Sand 221-898-6	 N50 Medium Tan 221-899-2
 W10 Fair Light 221-896-6	 C40 Neutral Tan 221-899-3	 W50 Rich 221-899-5
 W20 Ivory 221-897-2	 N40 Neutral Sand 221-898-9	 C60 Honey Deep 221-899-7
	 W40 Sand 221-899-1	 N60 Rich Honey 221-899-6
		 N70 Deep 221-899-8

Available in 18 long-wearing shades with Warm (W), Neutral (N) or Cool (C) undertones.

for a subtle and pearlescent glow

**Moisture Cushion Highlighter**

Portable cushion highlighter is great for on-the-go. Illuminates skin with just one touch. Antibacterial applicator and mirror included. Lightly tap onto cheeks, forehead, nose, cupid's bow and row bone. 8 g  
221-901-9  
reg. 23.00  
**19.00**



**Tone Up Primer**  
Colour-correcting primers instantly hydrate and leave skin prepped and ready for foundation. 30 ml  
reg. 35.00  
**29.00**



**MINT** for UNEVEN SKIN:  
Neutralizes red, blotchy areas.  
221-900-5

**LAVENDER** For SALLOW SKIN:  
Corrects yellowish undertones.  
221-900-4

**PINK** for PALE SKIN:  
Revives skin tone and brightens.  
221-900-3

**LUMIERE** for DULL SKIN:  
Iridescent pearl boosts skin's radiance.  
221-900-2

**Ink Lasting Primer**  
Mattifies and controls oil. Minimizes the appearance of pores. 30 ml  
221-931-8  
reg. 35.00  
**29.00**

Package labels may vary.

**PRIME & TONE**



# PHYSIOGEL FACE & BODY

Born in Europe.  
Powered by science.  
Dermatologist-recommended  
worldwide.

CLINICALLY  
PROVEN  
MOISTURIZATION



## CALMING RELIEF FOR FACE

Skin feels dry, itchy, red,  
sensitive and irritated?

### A. A.I. Lotion

Facial lotion for instant and long-lasting, soothing relief of redness and itching due to dryness. Light cream emulsion. 200 ml **222-791-7**  
reg. 59.00  
**47.99**

### B. A.I. Cream

Facial cream for instant and long-lasting, soothing relief of redness and itching due to dryness. 100 ml **222-791-9**  
reg. 59.00  
**47.99**

Hypoallergenic and non-comedogenic.  
No fragrances, preservatives or colourants.



## FOR BODY

### Body Lotion

Lightweight, quickly absorbed lotion with the feel of a light emulsion cream. 200 ml **222-791-3**  
reg. 42.00  
**33.99**

## DAILY MOISTURE THERAPY FOR FACE

Sensitive skin feels dry and tight?

### C. Dermo-Cleanser

Mild and gentle, soap-free facial cleanser. Appropriate for frequent use, with or without water (can apply with cotton pad). Leaves skin feeling clean and soft. 150 ml **222-791-5**  
reg. 34.00  
**26.99**

### D. Intensive Cream

Rich daily facial cream provides long-lasting, intensive moisturization. 100 ml **222-791-4**  
reg. 56.00  
**44.99**

### E. Facial Lotion

Lightweight, quickly absorbed lotion with the feel of a light emulsion cream. 200 ml **222-615-5**  
reg. 45.00  
**34.99**

### Facial Cream

Day cream provides long-lasting moisture for normal to dry sensitive skin.

**F. 150 ml 222-615-9**  
reg. 59.00  
**47.99**

**G. 75 ml 222-615-7**  
reg. 41.00  
**32.99**



ISA KNOX ANEW LX ULTIMATE

# discover the rejuvenating Power of peonies

Infused with paeonol, our unique extract harvested at its peak from rare peonies in a patented compound specially formulated for a rejuvenated look beyond the ultimate.



### Rejuvenating Day Cream

This multi-purpose paeonol-infused day cream visibly reduces wrinkles and improves elasticity, radiance and skin texture. With nutmeg to help visibly even skin tone, and soothe skin. 50 ml  
**222-443-7**  
reg. 70.00  
**56.00**

### Rejuvenating Dual Night Cream

Two-step cream infused with paeonol and macadamia oil. Volume Cream with rice bran extract to help visibly plump skin. Firming Cream with peptides to support production of collagen and elastin. Each, 25 ml  
**222-443-8**  
reg. 70.00  
**56.00**

### Rejuvenating Eye Serum

Infused with paeonol and ceramides to help visibly reduce fine lines around the eye area, diminish dark circles and depuff bags. 30 ml  
**222-444-0**  
reg. 70.00  
**56.00**



# Gel to oil cleanser

Hydrating cleanser leaves skin soft and radiant looking

**NEW**

### Rejuvenating Gel to Oil Cleanser

Premium hydrating facial cleanser, infused with paeonol and blended oils. Upon contact with water, formula becomes a milky emulsion, leaving complexion feeling soft and looking radiant as it dissolves makeup and washes away impurities. 125 ml  
**222-985-1**  
reg. 30.00  
**23.99**





ISA KNOW ANEW CLINICAL

# collagen... the skin plumper

see the look of youthfully  
re-plumped skin

Skin looks visibly smoother

## Collagen Booster™ Rejuvenating Serum Ampoules

With a powerful peptide blend that visibly boosts the body's natural production of collagen. Vegan. Hypoallergenic and clinically- and dermatologist-tested. Use 1 ampoule each AM & PM. 60 ampoules, 0.22 ml each. **221-391-4**  
reg. 88.00  
**69.99**



### TO USE

After applying serum, grip handle and gently roll upward and outward over forehead, cheeks and neck. Promotes the absorption of serums and moisturizers.

### Avon Eclat D'or Youth Activating Massager

This chrome-plated roller deeply kneads the curvature of your face and décolletage to help revive and tighten tired, stressed skin. 15 cm L. Use AM/PM. **221-932-0**  
reg. 70.00  
**55.00**



# boost your regimen



Enhance the benefits of your moisturizers with powerful results!

### Anew Power Serum

93% of women agree it dramatically improves skin's overall appearance.\* Apply AM/PM after cleansing, before moisturizing. 30 ml **106-273-6**  
reg. 63.00  
**37.99**

\*Based on those who expressed an opinion in a consumer-perception study.



**ANEW ULTIMATE** combats multiple signs of aging

Try-it sizes.

**Multi-Performance Day Cream Broad Spectrum SPF 25**  
15 g **122-904-5**  
reg. 21.00  
**11.99**

**Multi-Performance Night Cream**  
15 g **122-357-0**  
reg. 21.00  
**11.99**



Skin looks visibly firmer with fewer wrinkles and appears more luminous than ever before.

**Multi-Performance Day Cream Broad Spectrum SPF 25**  
50 g **122-903-9**  
reg. 59.00  
**33.99**



Open your eyes to a smoother and firmer look with this 2-in-1 treatment.

**Multi-Performance Eye System**  
Visibly smooths the look of crow's-feet and de-puffs under eyes. Cream, 15 g; elixir, 2.5 g **122-538-2**  
reg. 59.00  
**33.99**



Works while you sleep to revive and recreate the look of youthful skin.

**Multi-Performance Night Cream**  
Restores a radiant and youthful appearance. 50 g **122-904-2**  
reg. 59.00  
**33.99**



Indulge in your best you yet with this most luxurious night crème.

**Supreme Advanced Performance Crème**  
50 g **112-399-3**  
reg. 84.00  
**55.00**



3X more powerful together than an oil or serum alone.

**Supreme Dual Elixir**  
Two innovative formulas...a unique serum and a luxurious blend of precious oils. Use after cleansing. Serum/oil, 20 ml each. **220-843-3**  
reg. 84.00  
**55.00**



**ANEW PLATINUM**

Try-it sizes.

**Day Cream SPF 25**  
15 g **244-708**  
reg. 21.00  
**11.99**

**Night Cream**  
15 g **106-722-2**  
reg. 21.00  
**11.99**



Visibly lifts and firms the look of your jawline.

**Day Cream SPF 25**  
Helps restore the look of youthful skin. 50 g **244-709**  
reg. 59.00  
**33.99**



Overnight, skin appears smoother.

**Night Cream**  
Over time, skin appears resculpted. 50 g **106-588-4**  
reg. 59.00  
**33.99**



Dual-purpose treatment for eyes and lips.

**Eye & Lip Cream**  
Dual applicator. 15 g **429-062**  
reg. 59.00  
**33.99**



Boost your regimen with Power Serum, page 107

95% of women showed a visibly re-contoured neck area\*

**Firm and Sculpt Cream for Neck and Chest**  
Use PM after cleansing. 50 g **116-652-7**  
reg. 59.00  
**33.99**



\*Based on a clinical study.





# make SPF your BFF

This light lotion is no “lightweight”!  
**Anew Skinvincible Day Lotion Broad Spectrum SPF 50**  
 Powerful SPF and 24-hour moisture. With an advanced antioxidant complex and our highest SPF. Use AM. Fragrance-free for sensitive skin. 30 ml **108-951-9**  
 reg. 56.00  
**32.99**



SPF 50



SPF 25



SPF 50

Revives the look of your skin's natural radiance  
**Anew Vitale Day Lotion Broad Spectrum SPF 25**  
 Powered by VitaTone Complex, this lightweight, oil-free lotion shrinks the look of pores and evens out the look of skin tone. 50 ml **103-988-9**  
 reg. 56.00  
**32.99**

Sunscreen filters provide broad spectrum protection.  
**Anew Hydra Fusion Daily Beauty Defense Broad Spectrum Sunscreen Lotion SPF 50**  
 Smooth over face after moisturizing, before applying makeup and before sun exposure. 50 ml **221-070-7**  
 reg. 48.00  
**26.99**



SPF 25

Restores a virtually line-free look in just one week  
**Anew Complete Renewal Day Lotion Broad Spectrum SPF 25**  
 Our formula, with exclusive Tri-Elastinex, works above and within skin's surface layers to reduce the look of lines and wrinkles like never before. 50 ml **102-973-4**  
 reg. 56.00  
**32.99**



**HYDRA FUSION** what your skin's been thirsting for



Instant eye-opener!  
**De-Puffing Eye Serum**  
 With caffeine and a cooling ceramic tip. Eyes look and feel refreshed.  
 15 ml  
**220-388-1**  
 reg. 48.00  
**26.99**



This gel cream has a weightless feel!

**Gel Cream**  
 The water-like gel absorbs instantly making skin appear smoother, refreshed and plumped with hydration.  
 50 g **220-387-9**  
 reg. 48.00  
**26.99**



Visibly plums the look of skin.

**Nighttime Facial Treatment**  
 Increases moisture by 3X. Relaxing rose scent.  
 50 g **220-851-5**  
 reg. 48.00  
**26.99**



Cleanse... no water needed!

**Cleansing Micellar Water**  
 Gently lifts dirt, oil and makeup while boosting hydration. No need to rinse off!  
 300 ml  
**220-388-3**  
 reg. 20.00  
**11.49**



with 1.5% hyaluronic acid  
**see plumper, bouncier skin!**

50% MORE serum than our regular full size



**NEW**

**JUMBO SIZE**  
**Anew Hydra Fusion 1.5% Hyaluronic Acid Serum**

- With our **highest concentration** of hyaluronic acid, which can hold up to 1,000 times its weight in water for **immediate and lasting hydration**.
- Three molecular sizes of HA reach multiple layers of skin's surface for the look of **instant elasticity and bounce**.

Use before moisturizer.  
 45 ml  
**222-706-3**  
 reg. 103.00  
**43.99**





# glow with it

*Our expanded Vitamin C Collection helps reveal the look of radiance all over every inch of you.*

## NEW

### Dry Body Oil

Nourishing plant-based dry body oil with antioxidant vitamins C and E quickly melts into skin to instantly hydrate and visibly brighten skin. Soothing sunflower seed and jojoba oils help keep skin feeling supple. Lightweight and non-greasy. 100 ml  
**222-985-3**  
reg. 48.00  
**29.99**

## NEW

### Illuminating Body Serum

With antioxidant vitamins C and E to visibly improve skin texture and boost radiance. Soothing sunflower seed oil and panthenol (vitamin B5) help skin retain essential moisture. Light-reflecting pigments leave skin looking luminous all over. 200 ml  
**222-985-4**  
reg. 48.00  
**29.99**



Massage all over body after shower for a silky finish

**BODY SERUM**

**BODY OIL**

After cleansing skin, use alone or after Dry Body Oil to visibly enhance an all-over glow

**VITAMIN C** now for all over your body!

## NEW

### Overnight Radiant Mask

- Visibly improves skin texture and boosts radiance.
- With powerful antioxidant vitamins C and E.
- Contains niacinamide (vitamin B3), known to improve skin tone.
- Infused with shea butter and sunflower seed oil to help nourish and moisturize.

50 ml **222-985-5**  
reg. 50.00  
**29.99**

**FACE MASK**

## NEW

### Overnight Lip Mask

Enriched with antioxidant vitamin C and nourishing shea butter, this moisturizing mask conditions and treats lips while visibly improving lip texture. 20 g  
**222-985-6**  
reg. 48.00  
**21.99**

**LIP MASK**





# essential vitamin C family

Reveal the look of natural radiance.



SERUM

50% MORE serum than our regular full size

## JUMBO SIZE Brightening Serum

Skin looks visibly energized and brightened with the power of 10% pure vitamin C. Use AM and PM. Noncomedogenic. 45 ml **222-678-1** reg. 103.00 **43.99**



SERUM

**Brightening Serum**  
30 ml **220-694-4**  
reg. 62.00 **34.99**

**Antioxidant Lip Treatment**  
Colourless treatment plumps, nourishes and protects to keep lips looking youthful. Visibly plumps, smooths and conditions lips. 3.8 g **222-256-6** reg. 20.00 **11.99**



LIP TREATMENT



## ANEW VITAMIN C

Dual exfoliation facial mask



WARMING PEEL



**Warming Peel**  
Dual exfoliation, with vitamin C flakes and natural seeds, gently buffs skin with a warming sensation when activated with water, opening pores to remove impurities. 100 ml **221-072-6** reg. 38.00 **22.99**

**Brightening Eye Cream**  
Formulated with a powerful combination of vitamin C and niacinamide (vitamin B3), our revitalizing eye cream visibly reduces the appearance of dark circles and leaves under-eye area looking brighter and more even-toned. 15 ml **221-940-3** reg. 48.00 **26.99**



EYE CREAM



PRIMING MOISTURIZER

**Illuminating Priming Moisturizer**  
Fragrance-free. With natural citrus extracts. Use after Brightening Serum. Wear alone or under makeup. 50 ml **221-940-4** reg. 48.00 **26.99**



INTRODUCING

# ISA KNOX LXNEW CLEAN



An innovative collection of customized cleansers with skin-nourishing ingredients formulated for your skin type. Free from parabens, synthetic fragrances and dyes, and mineral oil.



NEW

FOR NORMAL DRY,  
COMBINATION AND OILY SKIN

### 2-in-1 Exfoliating Cleansing Balm

Melt away makeup and impurities with this exfoliating cleansing balm enriched with panthenol (vitamin B5) and bamboo stem powder. Use with spatula (included).

100 ml **222-986-3**

reg. 42.00

**36.99**

What's so hot about **Bamboo stem powder**:

- fine-milled, plant-based fibres help draw out impurities for visibly smoother, clearer, more radiant skin
- helps replenish collagen to keep skin looking supple
- helps protect skin from damage with antioxidants

# come clean



# power cleanse

LUXURIOUS, ULTRASOFT  
BRISTLES... SUITABLE FOR  
SENSITIVE SKIN

Vibrating  
cleansing  
brush  
cleanses  
5X better\*

❖ **Cleansing Brush**  
Includes one  
brush head.  
Requires two  
AA batteries  
(not included).  
**223-158-8**  
reg. 58.00  
**39.99**

**Cleansing  
Brush Refills**  
Contains 2  
brush heads.  
**223-158-9**  
reg. 24.00  
**16.49**

\*Versus cleansing by hand. Based on a clinical  
study with an ordinary cleanser.

## INTRODUCING ISA KNOX LXNEW CLEAN

NEW

FOR NORMAL,  
DRY AND  
COMBINATION SKIN

### Balancing Gel Cleanser

Invigorating gel-to-foam cleanser with moisturizing panthenol (vitamin B5) rebalances the skin. Mild amino acid-based ingredients derived from coconut help gently remove oil and impurities. 150 ml

**222-986-6**  
reg. 18.00  
**14.99**

OILY TO  
NORMAL SKIN

### Soothing Whipped Oil Cleanser

Gentle whipped oil formula contains panthenol (vitamin B5) and aloe.

Mild amino acid-based ingredients derived from coconut eliminate impurities and excess oil without leaving any residue.

150 ml **223-124-6**  
reg. 24.00  
**18.99**

FOR NORMAL,  
DRY AND COMBINATION SKIN

### Nourishing Cream Cleanser

Luxurious cream cleanser infused with panthenol (vitamin B5), and soothing rosemary and soapwort extracts gently removes impurities and makeup while restoring moisture. 150 ml

**222-986-2**  
reg. 18.00  
**14.99**





## ANEW CLINICAL

Targets cheeks, chin, jawline and jowl.

### Infinite Lift Targeted Contouring Serum

Formulated with Polypeptide Lift Complex that helps to firm and lift facial skin for a younger, natural look. 30 ml **442-280**  
reg. 63.00  
**37.99**



Uneven skin? Look no further!

### Absolute Even Multi-Tone Skin Corrector

Reduces the look of seven common problems: dark spots, uneven skin tone, post-acne marks, brown patches, blotchy red patches, freckles and sallowness. 30 g **406-425**  
reg. 62.00  
**34.99**



Yes, it can visibly improve, skin tone, texture and clarity!

### Skinvincible Deep Recovery Cream

Use PM. Fragrance-free for sensitive skin. 30 g **108-951-8**  
reg. 56.00  
**32.99**



Retexturize skin in just one night.\*

### Resurfacing Expert Smoothing Fluid

30 g **100-760-9**  
reg. 62.00  
**34.99**



Visibly lifts, firms and tightens.

### Eye Lift Pro Dual Eye System

See a dramatic difference in 7 days.\* Gel, 10 ml; cream, 10 ml **429-115**  
reg. 56.00  
**31.99**



\*Based on a clinical study vs. 3 professional microdermabrasion treatments over 12 weeks.

\*\*This is a cosmetic product for external use only. Follow usage instructions on product packaging.

## ANEW CLINICAL treat your skin like a professional

Like a pro glycolic peel...but better!†

### Extra Strength Retexturizing Peel

See how radiant and smooth your skin will look. 30 fragrance-free pads. **120-005-5**  
reg. 56.00  
**31.99**



†In 6 out of 8 attributes tested over a 7-week period.

Visibly improves skin's appearance by increasing elasticity.

**Advanced Wrinkle Corrector**  
Moisturizes dry skin while it diminishes the look of wrinkles. 50 ml **430-152**  
reg. 56.00  
**31.99**



It moisturizes. It exfoliates. All in one!

### AHA Refining Cream

It's so mild, you can use it every day...aha! Use it at night after cleanser as your moisturizer. 50 g **110-237-4**  
reg. 56.00  
**31.99**



A face lift in a jar!

### ThermaFirm Face Lifting Cream

Moisturizes dry skin as it firms. 30 ml **220-222-5**  
reg. 56.00  
**31.99**





**RE:TUNE**

thirsting for better hydration?

**NEW**

**re:tune Hydration**

Great-tasting and refreshing antioxidant drink mix. Helps support immune function and provides a source of electrolytes. Berry flavoured. 20 packets. **223-086-7**  
reg. 37.00  
**30.00** box of 20 packets

**DIRECTIONS:** Take 1 packet daily. Add contents of 1 packet to 235 ml (8 fl. oz.) of cold water. Mix well until dissolved. Take with food, a few hours before or after taking medications or natural health products.



20 PACKETS



hair skin & nail health

**NEW**

**re:tune Hair, Skin & Nail Health**  
Helps to maintain healthy hair, skin and nails. Source of antioxidants that help reduce cell damage caused by free radicals. 60 tablets. **223-086-3**  
reg. 55.00  
**45.00**

**DIRECTIONS:** (Adults): Take 2 tablets daily, with food (containing oil/fat), a few hours before or after taking other medications or natural health products. Avoid taking at bedtime.

the A-BOX



try-it size



full size

**NEW**

- **Keep Calm & Care On**
- Anew Ultimate Supreme Advanced Performance Crème, 7 ml
- Anew Clinical Eye Lift Pro Dual Eye System, Gel and Cream, 10 ml each
- The Face Shop Tone Up Primer in Mint 10 ml

**223-371-7**  
**ONLY 14.99**

WITH EVERY 50.00 PURCHASE FROM THIS BROCHURE

(excluding the A-Box)

**75.00 VALUE**

Packaging may vary. In case of unforeseen demand, Avon reserves the right to substitute products of equal or greater value.





# clean green + serene

Hemp-derived facial oil nourishes, balances and soothes for calm, happy and radiant skin.

## BEAUTIFUL BENEFITS:

- lightweight
- absorbs easily
- suitable for sensitive skin
- vegan
- paraben/gluten-free
- non-comedogenic
- hypoallergenic

### Hemp Seed Facial Oil

Use AM/PM, after cleansing. If using serum(s) and/or moisturizer, use oil as last step of routine. 30 ml **222-913-9** reg. 50.00 **39.99**



## FACIAL OIL NURTURES SKIN

Contains naturally-derived ingredients such as cannabis sativa seed, grapeseed and jojoba seed oils, rich in omega fatty acids and vitamin E to relieve skin discomfort and redness due to dryness.

## CLEARSKIN® your ally against acne



### CLEARSKIN® PROFESSIONAL COLLECTION

Includes:

- **Professional Liquid Extraction Strip\***  
Apply on T-zone (nose, forehead, chin) for deep cleansing. Use 1-2 times a week. 30 ml
- **Professional Deep Pore Cleansing Scrub**  
125 ml
- **Professional Clarifying Toner Pads\***  
45 pads.

58.00 value

896-335-2

**3-PIECE PACK**  
**29.99**

\*Not an acne treatment product.

use loop end  
to remove  
whiteheads



use flat end  
to remove  
blackheads

**Blackhead  
Remover Tool**  
Stainless  
steel. 12 cm L.  
**9.00 value**

**FREE**  
WITH PURCHASE  
OF THE CLEARSKIN®  
COLLECTION



**AVON SOLUTIONS** got a skin concern? we've got an easy solution!

Give your skin its youthful, tight look back.

**Dramatic Firming Cream**

With collagen for firmer, smoother-looking skin. Works to firm and smooth while simultaneously moisturizing your face to return skin's healthy elasticity.

50 ml **916-07**  
reg. 14.00  
**8.99**

**Bonus-Size**  
75 ml **222-703-4**  
reg. 21.00  
**11.99**



Moisturizes skin.

**Bonus-Size Nurtura Replenishing Cream**

Combats dryness and flakiness by supplying skin with the moisture it needs. 75 ml **222-703-5**  
reg. 21.00  
**11.99**



With grape extract.

**Banishing Cream Skin Discoloration Improver**

Helps reduce the appearance of unwanted dark spots and discolorations. 75 ml **917-47**  
reg. 14.00  
**8.99**



With chia seed extract.

**Oil-Balancing Cream**

Refreshing gel-cream eliminates excess shine and minimizes the appearance of pores. 50 ml **222-703-3**  
reg. 19.00  
**10.49**



With sunflower seed extract.

**Anti-Aging Cream**

Moisturizing formula works to visibly smooth the appearance of fine lines and wrinkles. 50 ml **222-703-2**  
reg. 19.00  
**10.49**



**AVON CARE**

with  
**soybean**

to help soften  
rough, dry skin  
for long-lasting  
smoothness



SKIN CARE



**Rich Moisture Comforting Nourishing Cream**  
Designed for the gentle skin on your face. Hypoallergenic. Dermatologist-tested. Non-comedogenic. 150 ml **222-387-4**  
reg. 10.00

**LIMITED TIME OFFER 7.99**



# A Shore Bet

In shades of sunsets and seashores, the contemporary accessories of summer are easy breezy.



**NEW**

### Beach Chic Collection

Glass stones and shell-like accents set in silvertone.

#### Pendant Necklace

Chain, 42 cm with 8 cm extender. 2 cm diam.

Blue **223-221-0**

Coral **223-221-1**

Ivory **223-221-2**

reg. 31.99

**23.99** each

#### Beaded Bracelet

One size fits most.

Coral **223-225-5**

Blue **223-225-6**

reg. 23.99

**18.99** each

#### ❖ Sparkling Silicone Dial Watch

One size fits most.

Pastel Aqua **223-221-6**

Lavender **223-221-7**

reg. 48.99

**37.99** each

#### Drop Earrings

Pierced studs, 2 cm L

Blue **223-225-3**

Coral **223-225-4**

reg. 17.99

**13.99** each set





# Shell Game

Ocean inspirations and genuine shell details come together for the love of summer.



**NEW**

**Summer Chic Beaded Collection**

Choose from silvertone with turquoise and acrylic beads or goldtone with mother-of-pearl and acrylic beads.

**A. Hoop Earrings**  
3 cm diam. Pierced.  
Aqua 223-200-8  
Ivory 223-200-7  
reg. 13.99  
**10.99**  
each pair

**B. Necklace**  
42 cm L with  
9 cm extender.  
Aqua 223-200-6  
Ivory 223-200-5  
reg. 23.99  
**18.99** each

**C. Stretch Bracelet**  
One size fits most.  
Aqua 223-235-7  
Ivory 223-235-6  
reg. 17.99  
**13.99** each

**NEW**

**D. Summer Aqua Statement Ring**  
Textured silvertone with reconstituted turquoise stone, 3 cm L.  
6 223-202-1  
8 223-202-2  
10 223-202-3  
reg. 17.99  
**13.99**



Summer chic beaded collection also available in ivory

**NEW**

**E. Goldtone Coral-Like Statement Ring**  
Textured goldtone with reconstituted coral stone, 3 cm L.  
6 223-201-0  
8 223-201-1  
10 223-201-2  
reg. 17.99  
**13.99**

**NEW**

**F. Goldtone Coral-Like Y Necklace**  
Goldtone with the look of coral accent stone.  
71 cm L with 9 cm extender. 223-200-9  
reg. 27.99  
**20.99**

**NEW**

**G. ♡ Summer Chic Everyday Watch**  
Tan leather-like strap, 23 cm L. Goldtone case, 34 mm diam.  
223-228-6  
reg. 62.99  
**47.99**

Ring sizer, page 147



# Blushing ombré

An elegant collection featuring varying shades of pink glass.

**NEW**

## Blushing Ombré Collection

Shades of pink glass in goldtone.

### Hoop Earrings

3 cm diam.  
Pierced.

223-222-0

reg. 23.99

18.99

### Pendant Necklace

Necklace 42 cm L  
with 9 cm extender.  
Pendant, 3 cm diam.

223-221-9

reg. 23.99

18.99

### Stretch Bracelet

Beaded. Stretches  
to fit most.

223-222-1

reg. 20.99

15.99



**NEW**

## Radiant Azure Collection

The lavish look of sapphire in silvertone.

### Pendant Necklace

Chain, 41 cm with  
8 cm extender.

Lobster clasp  
closure. 223-222-2

reg. 23.99

18.99

### Drop Earrings

Teardrop casting  
with drop hook.

223-222-3

reg. 13.99

10.99

### Statement Ring

Teardrop casting.

6 223-222-4

8 223-222-5

10 223-222-6

reg. 17.99

13.99

Ring sizer, page 147

# True Blue

Statement pieces with opulent teardrop silhouettes, reminiscent of royalty.

JEWELLERY





# Infinite Sparkle

**NEW**

**Lovely Infinitely 3-Piece Set Collection**

Clear stones in delicately curved details set in goldtone.

**Necklace, Ring and Earring Set**

Chain, 42 cm with 9 cm extender. Lobster clasp closure. Pierced stud.

Order by ring size:

6 **223-221-3**

8 **223-221-4**

10 **223-221-5**

reg. 31.99

**23.99**

the set



**3-PIECE SET**  
necklace,  
earrings & ring



**Bracelet**

Adjustable pull-cord; one size fits most.

**223-221-8**

reg. 20.99

**15.99**



## Going Glam

Choose the look of diamonds and amethysts to dress up any look, day or night.

**3-PIECE**  
interchangeable  
pendant set



JEWELLERY



Ring sizer, page 147

**NEW**

**Pear Solitaire Ring**

Clear glass stone, with pavé accents set in silvertone.

6 **223-126-4**

8 **223-126-5**

10 **223-126-6**

reg. 17.99

**13.99**

**NEW**

**Interchangeable Necklace Set**

Silvertone with interchangeable glass stone and pearlesque pendants. 42 cm with 9 cm extender. Lobster clasp closure.

**223-125-7**  
reg. 31.99

**23.99** the set

**NEW**

**Pear Stone Pull Cord Bracelet**

Clear glass stones set in silvertone. One size fits most.

**223-125-8**

reg. 23.99

**18.99**





**D**  
6-PAIR  
earring pack

## treasured

Summer sparkles with shore things like abalone and coral-like beads.



2-PIECE  
anklet  
sets

**NEW**

**A. Aqua Beaded Anklet Set**  
Set of 2. Silvertone with the aqua accents. 23 cm with 3 cm extender.  
**223-203-4**  
reg. 17.99  
**13.99** the set

**NEW**

**B. Goldtone Pearly Anklet Set**  
Set of 2. Goldtone with the look of pearl accents. 23 cm with 3 cm extender.  
**223-203-5**  
reg. 17.99  
**13.99** the set

**NEW**

**C. Silvertone Crystal Anklet Set**  
Set of 2. Silvertone with the crystal accents. 23 cm with 3 cm extender.  
**223-203-3**  
reg. 17.99  
**13.99** the set

**NEW**

**D. Summer Multi-Earring Pack**  
Set of 6 pierced goldtone earrings with assorted coral-, turquoise- or pearl-like beads.  
**223-202-8**  
reg. 31.99  
**23.99** the pack



**Hoop Earrings**  
Pierced drop, 5 cm L.  
**223-126-0**  
reg. 23.99  
**18.99**

**NEW**

**Pretty Pearly Collection**  
Silvertone and pearlesque beads.



## be luminous

The look of pearls adds lustre and a radiant glow to any style.

❖ **Everyday Elegant Watch**  
Glossy white face, 31 mm diam. 23 cm L leather-like strap. **223-141-0**  
reg. 54.99  
**42.99**

**Stretch Bracelet**  
Stretches to fit most.  
**223-126-8**  
reg. 17.99  
**13.99**

**"Y" Necklace**  
51 cm L with 9 cm extender.  
**223-126-7**  
reg. 27.99  
**20.99**





# extra texture

Jewellery that nails it in hammered finishes.

**NEW**

### Hammered Metals Collection

Hammered textured goldtone or silvertone.

#### Statement Necklace

42 cm L necklace with 9 cm extender. Lobster closure. Discs, 3 cm diam.

Goldtone **223-150-2**  
Silvertone **223-150-3**

reg. 31.99  
**23.99 each**

#### Drop Earrings

3 cm L drop with 3 cm diam. disc. Pierced.

Goldtone **223-150-4**  
Silvertone **223-150-5**

reg. 13.99  
**10.99 each pair**

#### Ring

3 cm W.

Goldtone	Silvertone
6 <b>223-150-6</b>	6 <b>223-150-7</b>
8 <b>223-214-4</b>	8 <b>223-214-7</b>
10 <b>223-214-5</b>	10 <b>223-214-8</b>

reg. 17.99  
**13.99 each**



#### Stretch Bracelet

Stretches to fit most. Discs, 2 cm diam.

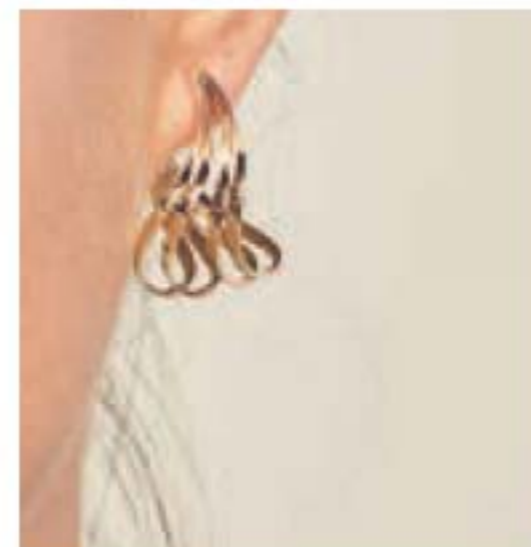
Goldtone **223-150-8**  
Silvertone **223-150-9**

reg. 23.99  
**18.99 each**



#### ❖ Essentials Two Tone Watch

Goldtone case with white face, 22 x 26 mm. 24 cm L silvertone mesh strap.  
**223-195-9**  
reg. 66.99  
**51.99**



Available in goldtone and silvertone

#### Multi Metals Earring Pack

3-piece pack. Pierced hoops range from 3-4 cm diam.

Goldtone **223-151-7**  
Silvertone **223-151-6**

reg. 23.99  
**18.99 each pack**

**NEW**

### Wavy Links Collection

Asymmetrical wavy designs available in rose goldtone and silvertone.



#### Cuff Bracelet

Stretches to fit most. 5 cm W.

Rose goldtone **223-151-8**  
Silvertone **223-151-9**

reg. 23.99  
**18.99 each**



#### 5-Piece Stack Ring Set

Pavé accents

Rose goldtone	Silvertone
6 <b>223-151-4</b>	6 <b>223-151-5</b>
8 <b>223-219-7</b>	8 <b>223-219-5</b>
10 <b>223-219-8</b>	10 <b>223-219-6</b>

reg. 17.99  
**13.99 each set**

Ring sizer, page 147

Available in rose goldtone and silvertone



#### Necklace & Earring Set

71 cm L necklace with 9 cm extender. Pendant, 4 cm diam.

Rose goldtone **223-151-0**  
Silvertone **223-151-1**

reg. 23.99  
**18.99 each set**

Necklace and earring set



**NEW**

**Frosted Collection**

With coloured beads or pear-shaped stones. Blue and pink set in silvertone; purple set in goldtone.



**Double Layer Necklace with Charm**  
42 cm L with 9 cm extender. Sand dollar charm drop, 2 cm diam.  
Pink **223-205-6**  
Purple **223-205-7**  
Blue **223-205-5**  
reg. 23.99  
**18.99 each**

**Teardrop Pull Cord Bracelet**  
Adjustable pull-cord; one size fits most.  
Pink **223-205-8**  
Purple **223-206-0**  
Blue **223-205-9**  
reg. 17.99  
**13.99 each**

**Teardrop Earrings**  
Pierced, 3 cm L drop.  
Pink **223-205-2**  
Purple **223-205-3**  
Blue **223-205-4**  
reg. 13.99  
**10.99 each**

# ocean charm

Jewellery collections inspired by the beauty of the sea.



Blue (silvertone)  
**223-204-3**



**3-BRACELET set**



Pink (goldtone)  
**223-204-4**



**5-RING set**

**NEW**  
**Sea Life Charm Stretch Bracelet Set**  
Set of 3 bracelets with coloured beads. One size fits most. Charm, 1 cm diam.  
reg. 23.99  
**18.99 each set**

**NEW**

**Sea Life Pendant Necklace**  
42 cm L with 9 cm extender. Pendant with coloured stone, 2 cm L.  
Turtle (silvertone) **223-204-0**  
Seahorse (goldtone) **223-203-9**  
Starfish (goldtone) **223-203-8**  
reg. 17.99  
**13.99 each**

**NEW**

**Sea Life Stacked Ring Set**  
Set of 5 rings with coloured stone accents.  
Blue (silvertone) Pink (goldtone)  
6 **223-204-9** 6 **223-204-5**  
8 **223-205-0** 8 **223-204-6**  
10 **223-205-1** 10 **223-204-7**  
reg. 17.99  
**13.99 each set**

Ring sizer, page 147



# do good, feel good



**NEW**

**✿ Rose Quartz Cord Bracelet**

Genuine rose quartz set in goldtone with goldtone ribbon charm. Adjustable pull-cord; one size fits most. **223-062-0**

**15.00**



**NEW**

**✿ Rose Quartz Drop Earrings**

Genuine rose quartz set in goldtone. Pierced, 3 cm L drop. **223-061-9**

**14.00**



3-bracelet set

**NEW**

**✿ Breast Cancer Cat's Eye Stretch Bracelets**

Set of 3 stretch bracelets. Silvertone beads with the look of cat's eye pink beads. One size fits most. Ribbon charm, 1 cm L. **223-206-2**

**21.00 the set**



**NEW**

**✿ Breast Cancer Cat's Eye Teardrop Necklace**

Silvertone with the look of pink cat's eye stone. 42 cm L with 9 cm extender. Pendant, 3 cm L. **223-206-4**

**18.00**

## layer it on

**NEW**

**Genuine Stone Collection**

Genuine stones in silvertone and goldtone.

**3-Piece Necklace**

42 cm L with 9 cm extender. Pendant, 2 cm L.

reg. 36.99

**28.99**

each set

**Multi-Layered Bracelets**

Leather-like cords. 18 cm with 3 cm extender.

reg. 27.99

**20.99** each

3-PIECE necklace sets wear together or separately



Amethyst (silvertone) **223-129-5**

White Quartz (goldtone) **223-129-4**

Reconstituted Turquoise (silvertone) **223-129-6**



Amethyst (silvertone) **223-129-0**



Freshwater pearl (goldtone) **223-128-9**



Reconstituted Turquoise (silvertone) **223-129-1**

**SHOP FOR THE CAUSE  
10% CONTRIBUTION**

**AVON WILL DONATE 10%** of the sale price from these breast cancer fundraising products to the Avon Foundation for Women, Canada to support the cause. Learn more at [avongivesback.ca](http://avongivesback.ca)



# STERLING BEAUTY

Genuine amethyst gemstones pair with sterling silver for a truly timeless look.



**NEW**

**Sterling Silver Amethyst Collection**  
Genuine amethyst stone set in sterling silver.

**Necklace**  
46 cm L with 3 cm extender and 2 cm L pendant.  
0.5 cm stone.  
**223-152-0**  
**77.99**

**Earrings**  
0.5 cm. Pierced.  
**223-152-1**  
**59.99**

**Ring**  
0.5 cm.  
5 **223-152-2**  
6 **223-152-3**  
7 **223-152-4**  
8 **223-152-5**  
9 **223-152-6**  
10 **223-152-7**  
**65.99**



**NEW**

**Sterling Silver Pearl Collection**  
Genuine pearl set in sterling silver.

**Drop Earrings**  
2 cm L drop. Pearl, 0.5 cm diam. Pierced.  
**223-152-8**  
**42.99**

**Sliding Pearl Necklace**  
46 cm L with 3 cm extender.  
Pearl, 1 cm diam.  
**223-199-8**  
**55.99**

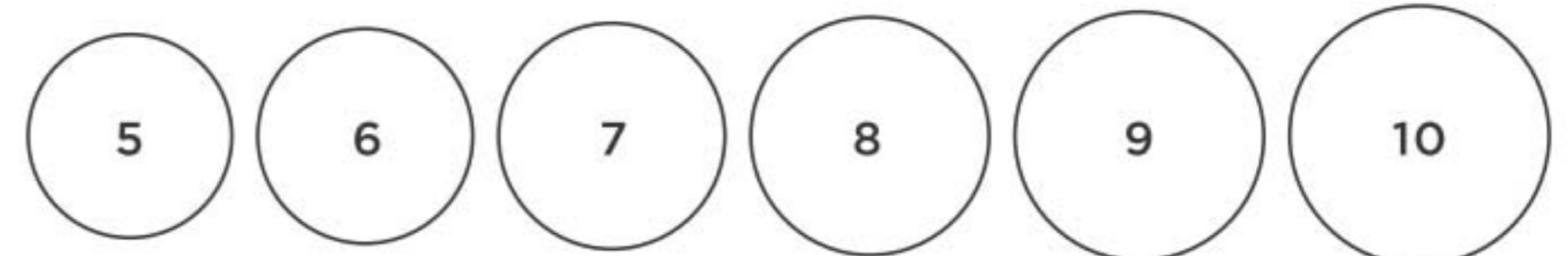
**Ring**  
Pearl, 0.5 cm diam.  
5 **223-183-8**  
6 **223-183-9**  
7 **223-184-0**  
8 **223-184-1**  
9 **223-184-2**  
10 **223-184-3**  
**49.99**



**Sterling Silver Clear CZ Ring**  
With cz stones.  
5 **222-882-7**  
6 **222-882-8**  
7 **222-882-9**  
8 **222-883-0**  
9 **222-883-1**  
10 **222-883-2**  
**49.99**



**FIND YOUR RING SIZE** match your ring to one of these circles







Genuine diamond accent

**NEW**

❖ **Men's Diamond Accent Two Tone Watch**

Real gold flash plating. 42 mm diam. case. Edge-to-edge glass dial with genuine diamond accent. Band, 20 cm L. **223-188-7** reg. 170.00 **140.00**

# QUALITY TIME FOR HIM

Stately timepieces from Boussivie. Always timely and forever of the moment.



Genuine lapis

**NEW**

**Lapis Ring**

Genuine lapis stone.

9 **223-133-4** 10 **223-133-5** 11 **223-133-6**

12 **223-133-7** 13 **223-133-8**

reg. 54.99

**42.99**



Engravable band

**NEW**

**Cuff Bracelet**

One size fits most. **223-133-3**

reg. 36.99

**28.99**



**NEW**

**Ornate Cross Necklace**

Textured details.

61 cm L with 4 cm L pendant.

**223-132-8**

reg. 39.99

**31.99**



**NEW**

❖ **Men's Nylon Strap Watch**

Black nylon strap, 25 cm L with blue dial and 32 mm diam. case.

**223-125-9**

reg. 54.99

**42.99**

Genuine onyx

**NEW**

**Onyx Necklace**

Tag necklace with genuine onyx stone inlay.

61 cm L with 5 cm L pendant.

**223-132-6**

reg. 53.99

**39.99**



STUDIO  
1886

# THE COLOURS OF SUMMER

break out all  
the shades.  
it's summertime  
and the fashion  
is easy.

**NEW**

❖ **Tie-Dye Summer Dress**

Pullover sleeveless tie-dye swing dress. Rayon/spandex. Centre back length: 94 cm on medium; 100 cm on 1X. Machine wash and dry.

XS (0-2) **223-173-5**

S (4-6) **223-173-6**

M (8-10) **223-173-7**

L (12-14) **223-173-8**

XL (16) **223-173-9**

**52.99**

1X (18W-20W) **223-174-0**

2X (22W-24W) **223-174-1**

3X (26W-28W) **223-174-2**

**57.99**

**NEW**

❖ **Side Tie Tee**

Marigold cap sleeve pullover top with round neckline and tie-front detail. Cotton/modal/spandex. Centre back length: 65 cm on medium; 70 cm on 1X. Machine wash, dry flat.

XS (0-2) **223-164-7** 1X (18W-20W) **223-165-2**

S (4-6) **223-164-8** 2X (22W-24W) **223-165-3**

M (8-10) **223-164-9** 3X (26W-28W) **223-165-4**

L (12-14) **223-165-0** **39.99**

XL (16) **223-165-1**

**34.99**

Elegant  
long  
cardigan  
with chiffon  
back

**NEW**

❖ **Mixed Media Duster Cardigan**

Blue long-sleeve open cardigan with chiffon back detail. Rayon/spandex; chiffon: polyester. Centre back length: 100 cm on medium; 104 cm on 1X. Machine wash, dry flat.

XS (0-2) **223-171-9** 1X (18W-20W) **223-172-4**

S (4-6) **223-172-0** 2X (22W-24W) **223-172-5**

M (8-10) **223-172-1** 3X (26W-28W) **223-172-6**

L (12-14) **223-172-2** **59.99**

XL (16) **223-172-3**

**54.99**

FASHION

Tie-front  
detail





**NEW**

❖ **Ruffle T-Shirt Dress**

Thyme pullover short sleeve dress with round neckline and ruffle detail hem. Cotton/modal/spandex. Centre back length: 93 cm on medium; 95 cm on 1X. Machine wash, dry flat.

XS (0-2) **223-174-3** 1X (18W-20W) **223-174-8**  
 S (4-6) **223-174-4** 2X (22W-24W) **223-174-9**  
 M (8-10) **223-174-5** 3X (26W-28W) **223-175-0**  
 L (12-14) **223-174-6** **62.99**  
 XL (16) **223-174-7**  
**57.99**



**NEW**

❖ **Tiered Sleeveless Maxi Dress**

Blue sleeveless maxi with 4 tiers and lace detail. V-neck with tie detail. Rayon/polyester; lining: polyester/spandex. Centre back length: 137 cm on all sizes. Machine wash, line dry.

XS (0-2) **223-172-7** 1X (18W-20W) **223-173-2**  
 S (4-6) **223-172-8** **223-173-2**  
 M (8-10) **223-172-9** 2X (22W-24W) **223-173-3**  
 L (12-14) **223-173-0** **223-173-3**  
 XL (16) **223-173-1** 3X (26W-28W) **223-173-4**  
**73.99** **78.99**

a cool way to get your summer frills



Eyelet design with flutter sleeves

**NEW**

❖ **Eyelet Pattern Top**

Flutter sleeve eyelet top. Round neckline with subtle shirring. Polyester/spandex. Centre back length: 64 cm on medium; 69 cm on 1X. Machine wash, line dry.

Fuchsia  
 XS (0-2) **223-179-2**  
 S (4-6) **223-179-3**  
 M (8-10) **223-179-4**  
 L (12-14) **223-179-5**  
 XL (16) **223-179-6**  
**41.99**  
 1X (18W-20W) **223-180-2**  
 2X (22W-24W) **223-180-3**  
 3X (26W-28W) **223-180-4**  
**46.99**

Blue  
 XS (0-2) **223-179-7**  
 S (4-6) **223-179-8**  
 M (8-10) **223-179-9**  
 L (12-14) **223-180-0**  
 XL (16) **223-180-1**  
**41.99**  
 1X (18W-20W) **223-180-5**  
 2X (22W-24W) **223-180-6**  
 3X (26W-28W) **223-180-7**  
**46.99**



## NEW

### ❖ Mixed Media Split Front Top

Coral sleeveless knit top with chiffon split front overlay. Slightly longer in the front. Rayon/spandex; chiffon inset: polyester. Centre back length: 79 cm on medium; 84 cm on 1X. Machine wash, dry flat.

XS (0-2) **223-171-1** 1X (18W-20W) **223-171-6**  
 S (4-6) **223-171-2** 2X (22W-24W) **223-171-7**  
 M (8-10) **223-171-3** 3X (26W-28W) **223-171-8**  
 L (12-14) **223-171-4** **57.99**

XL (16) **223-171-5**

**52.99**

### ❖ 2-Pack Everyday Leggings

Includes black and grey full-length leggings with elastic waistband. Cotton/spandex. Inseam: 71 cm for all sizes. Machine wash, dry flat.

XS (0-2) **222-449-4** 1X (18W-20W) **222-449-9**  
 S (4-6) **222-449-5** 2X (22W-24W) **222-450-0**  
 M (8-10) **222-449-6** 3X (26W-28W) **222-450-1**  
 L (12-14) **222-449-7** **54.99 pack of 2**  
 XL (16) **222-449-8**

**49.99 pack of 2**

black

grey



Sandals sold on page 160.



Cut-out  
neckline  
detail

cool, casual,  
colourful  
is in

## NEW

### ❖ Sleeveless Cut-Out Neckline Top

Seagrass sleeveless top with cut-out neckline detail. Polyester/spandex. Centre back length: 65 cm on medium; 69 cm on 1X. Machine wash, line dry.

XS (0-2) **223-180-8** 1X (18W-20W) **223-181-3**  
 S (4-6) **223-180-9** 2X (22W-24W) **223-181-4**  
 M (8-10) **223-181-0** 3X (26W-28W) **223-181-5**  
 L (12-14) **223-181-1** **47.99**

XL (16) **223-181-2**  
**42.99**

## NEW

### ❖ Tie Front V-Neck Dress

Fuchsia pullover V-neck dress with cap sleeves and empire waist with tie. Rayon/spandex. Centre back length: 99 cm on medium; 100 cm on 1X. Machine wash, dry flat.

XS (0-2) **223-182-2** 1X (18W-20W) **223-182-7**  
 S (4-6) **223-182-3** 2X (22W-24W) **223-182-8**  
 M (8-10) **223-182-4** 3X (26W-28W) **223-182-9**  
 L (12-14) **223-182-5** **62.99**

XL (16) **223-182-6**  
**57.99**







**NEW**

❖ **Printed Mesh Button Front Shirt**

Animal print long-sleeve mesh shirt with functional button down front and tab detail on sleeves. Polyester/spandex. Centre back length: 89 cm on medium; 91 cm on 1X. Machine wash, line dry.

XS (0-2) **223-178-4** 1X (18W-20W) **223-178-9**  
 S (4-6) **223-178-5** 2X (22W-24W) **223-179-0**  
 M (8-10) **223-178-6** 3X (26W-28W) **223-179-1**  
 L (12-14) **223-178-7** **57.99**  
 XL (16) **223-178-8**  
**52.99**

Features  
goldtone  
rings at  
neckline



summer looks are  
a breeze with easy  
silhouettes

**NEW**

❖ **Ring Top Detail**

Thyme 3-ring detail top with elbow-length sleeves and slight high/low hem. Polyester/spandex. Centre back length: 70 cm on medium; 74 cm on 1X. Machine wash, line dry.

XS (0-2) **223-169-5** 1X (18W-20W) **223-170-0**  
 S (4-6) **223-169-6** 2X (22W-24W) **223-170-1**  
 M (8-10) **223-169-7** 3X (26W-28W) **223-170-2**  
 L (12-14) **223-169-8** **47.99**  
 XL (16) **223-169-9**  
**42.99**

156 | C16

it's the details that  
make a casual top  
memorable

**NEW**

❖ **Asymmetrical Cold Shoulder Top**

Printed pullover off-shoulder tunic top. Polyester/spandex. Centre back length: 75 cm on medium; 81 cm on 1X. Machine wash, line dry.

XS (0-2) **223-170-3** 1X (18W-20W)  
 S (4-6) **223-170-4** **223-170-8**  
 M (8-10) **223-170-5** 2X (22W-24W)  
 L (12-14) **223-170-6** **223-170-9**  
 XL (16) **223-170-7** 3X (26W-28W)  
**49.99** **223-171-0**  
**54.99**

**NEW**

❖ **Lace Trim Capri Leggings**

Black crop leggings with elastic waistband and lace detail on hem. Cotton/spandex; lace: nylon/spandex. Inseam: 66 cm on all sizes. Machine wash, dry flat.

XS (0-2) **223-175-1** 1X (18W-20W)  
 S (4-6) **223-175-2** **223-175-6**  
 M (8-10) **223-175-3** 2X (22W-24W)  
 L (12-14) **223-175-4** **223-175-7**  
 XL (16) **223-175-5** 3X (26W-28W)  
**42.99** **223-175-8**  
**47.99**

FASHION SIZE CHART			
SIZE	BUST	WAIST	HIP
XS 0/2	80 - 83 CM	62 - 65 CM	84 - 86 CM
S 4/6	85 - 89 CM	67 - 71 CM	90 - 94 CM
M 8/10	93 - 97 CM	75 - 79 CM	98 - 102 CM
L 12/14	100 - 104 CM	83 - 86 CM	105 - 109 CM
XL 16	108 - 112 CM	90 - 94 CM	113 - 117 CM
1X 18W/20W	118 - 123 CM	99 - 104 CM	122 - 127 CM
2X 22W/24W	128 - 133 CM	109 - 114 CM	132 - 137 CM
3X 26W/28W	138 - 144 CM	119 - 124 CM	142 - 147 CM

Visit [avon.ca/fitguide](http://avon.ca/fitguide) for additional size and fit information.



Lace  
detail  
on hem

Sandals sold  
on page 160.

FASHION

C16 | 157





**NEW**

❖ **2-Piece Summer Lounge Set**

Camo printed short-sleeve tee and shorts with elastic waistband and decorative tie-on front. Polyester/spandex. Top: centre back length: 58 cm on medium; 64 on 1X. Shorts: 13 cm inseam for XS-XL; 18 cm inseam for 1X-3X. Machine wash, line dry.

XS (0-2) <b>223-175-9</b>	1X (18W-20W) <b>223-176-4</b>
S (4-6) <b>223-176-0</b>	2X (22W-24W) <b>223-176-5</b>
M (8-10) <b>223-176-1</b>	3X (26W-28W) <b>223-176-6</b>
L (12-14) <b>223-176-2</b>	<b>59.99</b>
XL (16) <b>223-176-3</b>	

**54.99 the set**



❖ **2 Pack Reversible Tanks**

Includes black and white tanks that reverse from V-neck to scoop neck. Cotton/polyester. Machine wash, dry flat. Centre back length: 66 cm on medium; 70 cm on 1X.

XS (0-2) **223-010-6**  
 S (4-6) **223-010-7**  
 M (8-10) **223-010-8**  
 L (12-14) **223-010-9**  
 XL (16) **223-011-0**

**27.99 the pack**

1X (18W-20W) **223-011-3**  
 2X (22W-24W) **223-011-4**  
 3X (26W-28W) **223-011-5**  
**32.99 the pack**



Have a  
summer  
tee party

PACK  
OF 4  
TEES

**NEW**

❖ **Vibrant Summer 4 Pack Tees**

Includes marigold tie dye print, fuchsia, thyme and blue V-neck short sleeve tees with rounded hem and chest pocket. Cotton/polyester. Centre back length: 66 cm on medium; 71 cm on 1X. Machine wash, dry flat.

XS (0-2) <b>223-144-4</b>	1X (18W-20W) <b>223-144-9</b>
S (4-6) <b>223-144-5</b>	2X (22W-24W) <b>223-145-0</b>
M (8-10) <b>223-144-6</b>	3X (26W-28W) <b>223-145-1</b>
L (12-14) <b>223-144-7</b>	<b>59.99 pack of 4</b>
XL (16) <b>223-144-8</b>	

**54.99 pack of 4**



## NEW

### ❖ Double Buckle Comfort Slides

Slip-on slide with double buckle detail.

Gold: man-made materials; blue: faux suede.

**42.99** each pair

Blue	Gold
6M 223-148-2	6M 223-147-6
7M 223-148-3	7M 223-147-7
8M 223-148-4	8M 223-147-8
9M 223-148-5	9M 223-147-9
10M 223-148-6	10M 223-148-0
11M 223-148-7	11M 223-148-1

## NEW

### ❖ Two-Tone Buckle Sandals

Tan/gold sandal with buckle detail and adjustable ankle strap. Man-made materials.

**42.99**

6M 223-147-0
7M 223-147-1
8M 223-147-2
9M 223-147-3
10M 223-147-4
11M 223-147-5



## NEW

### ❖ Classic Slip On Sneakers

Sneaker with elastic gore for easy slip on. Upper with grommet detail. Man-made materials.

**42.99** each pair

	Fuchsia	Green
6M	223-149-4	223-148-8
7M	223-149-5	223-148-9
8M	223-149-6	223-149-0
9M	223-149-7	223-149-1
10M	223-149-8	223-149-2
11M	223-149-9	223-149-3



walking on  
sunshine is  
easy with  
slip-ons

Elastic gore  
for easy  
slip-on



**Versatile blouse can be worn alone or layered over a tank top.**

**NEW**

❖ **White Tencel® Blouse**

White. 100% woven Tencel®. Centre back length: 71 cm on medium; 75 cm on 1X. Machine wash, line dry.

S (4-6) **223-335-5**

M (8-10) **223-335-6**

L (12-14) **223-335-7**

XL (16) **223-335-8**

**75.00**

1X (18W-20W) **223-335-9**

2X (22W-24W) **223-336-0**

3X (26W-28W) **223-336-1**

**80.00**

**limited quantities**

Roll-tabs at sleeves so you can wear them up or down

Button-up blouse with a relaxed fit and two chest pockets



Ankle length with tapered leg

Sandals sold on page 164.



Decorative rivets at ankle

**NEW**

❖ **7/8 Pull-On Pants with Embellished Legs**

Black pants with elastic waistband. Rayon/nylon/spandex. Hand wash, line dry. Inseam: 71 cm for all sizes.

S (4-6) **223-331-3**

M (8-10) **223-331-4**

L (12-14) **223-331-5**

XL (16) **223-331-6**

**65.00**

1X (18W-20W)

**223-331-7**

2X (22W-24W)

**223-331-8**

3X (26W-28W)

**223-331-9**

**70.00**

**limited quantities**



Comfortable and cool thong style sandals.

GENUINE cork footbeds

Made in Spain

Adjustable side buckle

**NEW**

❖ **Genuins® Rosas Toe Thong Adjustable Instep Sandals**  
Thong sandal with anatomically shaped footbed for added comfort. Cork/suede/metal/man-made materials.  
**89.99** each pair  
limited quantities

**GENUINS**  
FROM SPAIN

White  
6 223-282-9  
7 223-283-0  
8 223-283-1  
9 223-283-2  
10 223-283-3

Black  
6 223-282-3  
7 223-282-4  
8 223-282-5  
9 223-282-6  
10 223-282-7  
11 223-282-8

Soft, knit sweater with V-neck design

Side slits at hem

Embroidered details embellish the tapered sides

**NEW**

❖ **V-Neck Lightweight Sweater**  
Lightweight sweater in bright yellow. Cami not included. Rayon/polyester. Hand wash, line dry. Centre back length: 72 cm on medium; 78 cm on 1X.  
S (4-6) 223-333-4 1X (18W-20W) 223-333-8  
M (8-10) 223-333-5 2X (22W-24W) 223-333-9  
L (12-14) 223-333-6 3X (26W-28W) 223-334-0  
XL (16) 223-333-7 **70.00**  
**65.00**  
limited quantities

**NEW**

❖ **Pull On Ankle Length Denim Pant with Trim**  
Classic 5-pocket design. Cotton/polyester/spandex. Machine wash, line dry. Inseam: 71 cm for all sizes.  
6 223-332-7 18 223-333-3  
8 223-332-8 20 223-368-7  
10 223-332-9 22 223-368-8  
12 223-333-0 **90.00**  
14 223-333-1  
16 223-333-2  
**85.00**  
limited quantities



Anatomically-shaped footbed with arch support and deeper heel cups for comfort.

**NEW**

❖ **Genuins® Hawaii Double Buckle Sandals**

Double-buckle sandals with anatomically-shaped footbed for added comfort. Cork/suede/metal/man-made materials.

**89.99** each pair  
limited quantities

White

- 6 223-281-8
- 7 223-281-9
- 8 223-282-0
- 9 223-282-1
- 10 223-282-2

Brown

- 6 223-281-2
- 7 223-281-3
- 8 223-281-4
- 9 223-281-5
- 10 223-281-6
- 11 223-281-7

Black

- 6 223-280-6
- 7 223-280-7
- 8 223-280-8
- 9 223-280-9
- 10 223-281-0
- 11 223-281-1



GENUINE  
cork  
footbeds

Made in  
Spain

Adjustable  
double  
buckle



**NEW**

❖ **Print Jacket**

Bright, modern jacket with front and back yokes and silvertone hardware. Rayon/nylon/spandex. Centre back length: 56 cm on medium; 60 cm on 1X. Hand wash, line dry.

S 223-332-0

M 223-332-1

L 223-332-2

XL 223-332-3

**80.00**

1X 223-332-4

2X 223-332-5

3X 223-332-6

**85.00**

limited  
quantities



Spandex  
provides just  
the right  
amount of  
stretch





**2-PAIR  
PACK  
LOW-CUT  
SOCKS**

## CAT'S MEOW

❖ **Ladies' Stay-in-Place Fun Cat Socks - 2-Pair Pack**

Two-pair pack; one black, one grey. Fits shoe sizes 6-10. Cotton/polyester/spandex. Machine wash, hang to dry.

**223-236-2**

**6.99 2-pair pack**  
limited quantities

Cute cat design with pink accent on ears and tongue



## SEE AND BE SEEN

in fashionable readers



**READERS**  
available in two strengths



### NEW

❖ **Fashion Readers**

Each reader comes with a wipe cloth and sleeve case. Frame, polycarbonate; lense, acrylic; cloth, polyester; sleeve, neoprene.

**Black Frame**

1.5 Strength **223-200-1**

2.0 Strength **223-200-2**

**13.00** each pair

**Purple Frame**

1.5 Strength **223-200-3**

2.0 Strength **223-200-4**





Socks are made from recycled plastic bottles and can be still recycled after.

Lightweight, ideal to wear with flats or sneakers

**❖ Eco Friendly Socks - 4-Pack**  
Pack of 4 pairs of socks in colours shown. Fits shoe sizes 6-10. Recycled polyester/rubber/spandex. Machine wash, lay flat to dry. **223-091-2**  
**16.99** a 4-pair pack  
limited quantities

**PACK OF 4 PAIRS**



## NON-BINDING SOCKS

with wicking and anti-microbial feature

Soft mesh weave leg

Comfortable smooth toe

**NEW**

**❖ Non-Binding Comfort Socks**  
Lavender. Fits shoe sizes 6-10. Polyester/cotton/rubber/spandex. Machine wash and dry. **223-496-1**  
**8.99** a pair  
limited quantities



# BALLERINA STYLE FOOT COVERS

**NEW**

❖ **Soft Like Bathing Suit Foot Cover**

Black. Fits shoe sizes 6-10. Cotton/nylon/spandex. Hand wash, lay flat to dry.

**223-092-0**

**7.99 a pair**

**limited quantities**



Full inner silicone band maintains sock in place

Full inner silicone band maintains sock in place

Fine lace with metallic thread detail for a feminine touch.

**NEW**

❖ **Lace & Sparkle Foot Cover**

Black. Nylon/cotton/spandex/metallic thread. Fits shoe sizes 6-10. Hand wash, lay flat to dry. **223-091-9**

**7.99 a pair**

**limited quantities**



Comfortable cotton soles



**TWO COLOURS TO CHOOSE FROM!**

❖ **Low Cut Crochet Sock**

Fits shoe sizes 6-10. Cotton/nylon/spandex. Hand wash, lay flat to dry.

Ivory **223-091-6**

Black **223-091-5**

**6.99 each pair**

**limited quantities**

Crochet style adds a feminine touch



## FRESH FIJI

### ❖ Shoe Deodorizer

Eliminates tough odours on contact with the power of baking soda and persimmon. Great for all kinds of shoes, from leather to cotton. 300 ml  
222-442-7  
11.99

Quick-drying & lasting fresh scent for all shoe types!



### ❖ Delicates Washing Machine Bag

Prevents stretching, fraying and damage to lingerie, hosiery and other delicate fabrics. Mesh bag with 4 compartments and zipper closure. Polyester. 36 cm L x 15 cm H. 222-817-4  
14.99



### ❖ Laundry Stain Remover Spray

Pre-treats and removes tough set-in stains with a powerful enzyme formula. Helps to remove stains better than just laundry detergent alone. For direct application without damaging fabrics. 500 ml  
222-485-0  
13.99



### ❖ Sheet Detergent

30 sheets, each 23 x 20 cm. Sheets can be separated depending on your load.  
222-440-7  
20.99

For up to 60 loads!



No measuring!



### ❖ Fabric Refresher with Wrinkle Release

Freshen fabrics and smooth wrinkles. Each, 500 ml  
**Fresh:** Clean laundry scent  
222-445-0  
**Crisp:** Vibrant aromatic scent  
222-442-9  
12.99 each



### ❖ Gel Bead Deodorizer

Neutralize odours. Each, 150 ml  
**Calming Lavender**  
222-445-3  
**Fresh Cotton**  
222-443-0  
11.99 each



## GERM DEFENSE KEY

# STAY SAFE!

## BACK BY POPULAR DEMAND

### ❖ Germ Defense Key

Touch-free tool attaches to keys for easy access. 8 cm L x 3 cm W x 3.8 mm thick. Silvertone. Zinc alloy/iron. To clean, wipe gently with an alcohol wipe or damp cloth with antibacterial sanitizer.  
222-963-5  
12.99

limited quantities



### MULTIPLE USES:

The Germ Defense Key is a tool that can be used to avoid contact with surfaces in high traffic areas that might hold germs or bacteria. It can be used to push buttons on ATM pads, open doors, pull out drawers, carry bags, touch screens and more!





**HOMESTAR** powerful solutions that keep your home fresh and clean!

**NEW**

❖ **Bathroom Cleaner**

Just spray, let sit and wipe away! Fights tough soap scum, limescale, calcium and grime. Triple-action low-pH formula safely breaks down and removes messes. Fresh green apple scent. 750 ml  
**222-708-9**  
**12.99**



❖ **Foaming Toilet Bowl Cleaner**

Fights toilet rings and stains. Convenient pouch dispenser. Use every two weeks. 60 g each pouch  
**222-708-8**  
**13.99**  
the pack of 5



❖ **Glass Cleaner**

Keep windows, mirrors, glass and more sparkling clean. Removes dirt, grime and fingerprints. Quick-drying, anti-fogging formula. 500 ml  
**222-709-0**  
**9.99**



❖ **Mop Stick**

Easy-grip handle. Full length, 1 metre. Head, 25 cm L x 10 cm W. Plastic/EVA/aluminum.  
**222-440-5**  
**21.99**

❖ **Mop Cloths**

Remove and clean dirt and dust from multi-surfaces. Can be used with or without mop. Safe on most finished floors. Reversible and disposable. 40 sheets each, 28 cm L x 21 cm W.  
**Dry or Wet cloths available.**

❖ **Dry Mop Cloths:**

Textured diamond pattern. Uses static electricity to lock in dust. **222-484-0**  
**8.99**

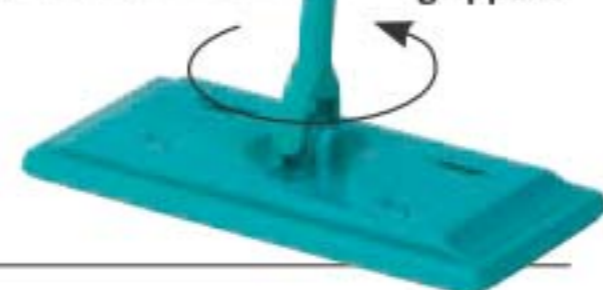
❖ **Wet Mop Cloths:**

Textured dot pattern reduces friction for maximized cleaning. **222-483-8**  
**12.99**



traps & locks in dirt & dust

360° swivel head with cloth grippers



lasts up to 3 months!

**NEW**

❖ **Odor Eliminator for Fridge**

No-spill solid gel formula with persimmon and eucalyptus extracts neutralizes odours in fridge. After gel dissipates, simply recycle the plastic container. 420 g  
**223-153-0**  
**11.99**

❖ **Multi-Purpose Cleaner**

Bleach-free, triple-action power cleaner for the kitchen and beyond. With citric acid, orange oil and baking soda to remove stubborn water stains. Natural citrus scent. For use on nonporous surfaces only. 500 ml  
**222-442-2**  
**11.99**



# BANISH MUSTY ODOURS

perfect for bathrooms, closets, basements

**NEW**

❖ **Homestar Moisture Absorber**

Absorbs excess moisture and prevents mildew and musty odours. 3 containers, 275 g each. **223-322-8**  
**8.99** the pack

PACK OF 3



❖ **Rangehood and Kitchen Degreaser**

Double-solvent solution blend for hard-to-remove grease stains on range hoods, stovetops, BBQ grills and more! Just spray and watch foaming bubbles go to work, then simply rinse. External oven use only. 480 ml  
**223-134-1**  
**15.99**





## HOME ESSENTIALS

### ❖ Cucina Essentials Automatic Dishwasher Detergent

All-in-one detergent and rinse aid cleans and prevents water stains. Water-soluble formula dissolves easily in wash cycle. Nature-derived ingredients. Phosphate/toxin-free. Fresh citrus scent. 55 tablets. **222-709-1**  
**20.00**  
pack of 55 tablets



### ❖ Cucina Essentials Dish Soap

Free of six chemical preservatives. No animal testing or animal ingredients. Naturally derived formula with stain-removing citric acid and microbubbles. Each, 490 ml  
**Lemon & Verbena** **222-445-2**  
**Garden Basil** **222-445-1**  
**10.50** each



### ❖ Cucina Essentials Multi-Purpose Wipes

Naturally derived formula with citric acid and pomegranate vinegar. Dermatologically-tested. Pomegranate scent. 60 wipes. **223-134-2**  
**10.00**  
pack of 60 wipes

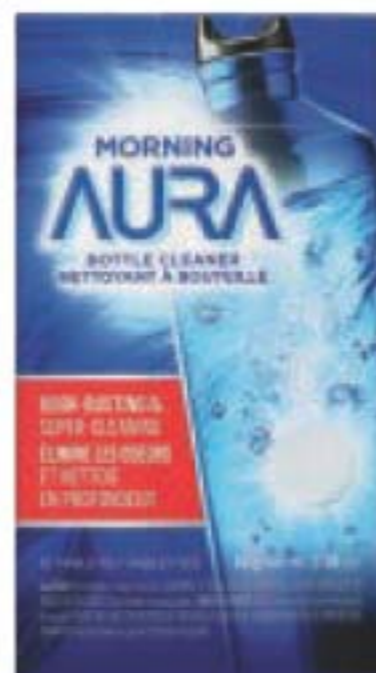
now 10% thicker sheets



### ❖ Morning Aura Bottle Cleaner

Effervescent cleaning tablets breakdown and lift stains from water bottles. Let sit and rinse. Includes *Cleaning in Progress* sticker included. 42 g total. **223-056-7**  
**8.99**  
pack of 12 tablets

WARNING: Liquid in bottle during cleaning process is harmful if swallowed. Use sticker provided and keep out of reach of children.



3-piece set



### ❖ Morning Aura Bottle Brush Set

Plastic/TPR. Includes:

- A.** For glasses, water bottles, thermoses, and more. 35 cm L x 6 cm diam.
- B.** For cleaning reusable straws and small items. 26 cm L x 1 cm diam.
- C.** For water bottle caps and smaller surfaces. 11 cm L x 4 cm diam.

**222-942-6**  
**14.99** the set

## SIRIUS GROOM



**NEW**

### ❖ Sirius Groom Shampoo for Dogs

Helps alleviate itchiness and dryness by washing away allergens. Formulated with oatmeal to help soothe skin. pH-balanced formula. Long-lasting scents. Nature-derived ingredients. 480 ml  
**Lovely Berry** **223-087-2**  
**Baby Powder** **223-087-3**  
**16.99** each



**NEW**

### ❖ Sirius Groom Pet Bath Massager

Gently massages shampoo while penetrating deep into the coat. Easy-to-grasp strap fits any hand size. Made from a durable, waterproof material that offers superior performance. TPR. 13 cm L x 8 cm W x 2 cm H. **223-109-1**  
**7.99** each



**NEW**

### ❖ Sirius Groom Odor Eliminator

Removes the toughest pet odours from fabrics and carpets. Leaves a light and fresh baby powder scent. Nature-derived ingredients including rice and barley to neutralize and absorb odours. For fabric and carpet use only, do not spray on pets. 400 ml **223-087-4**  
**13.99**



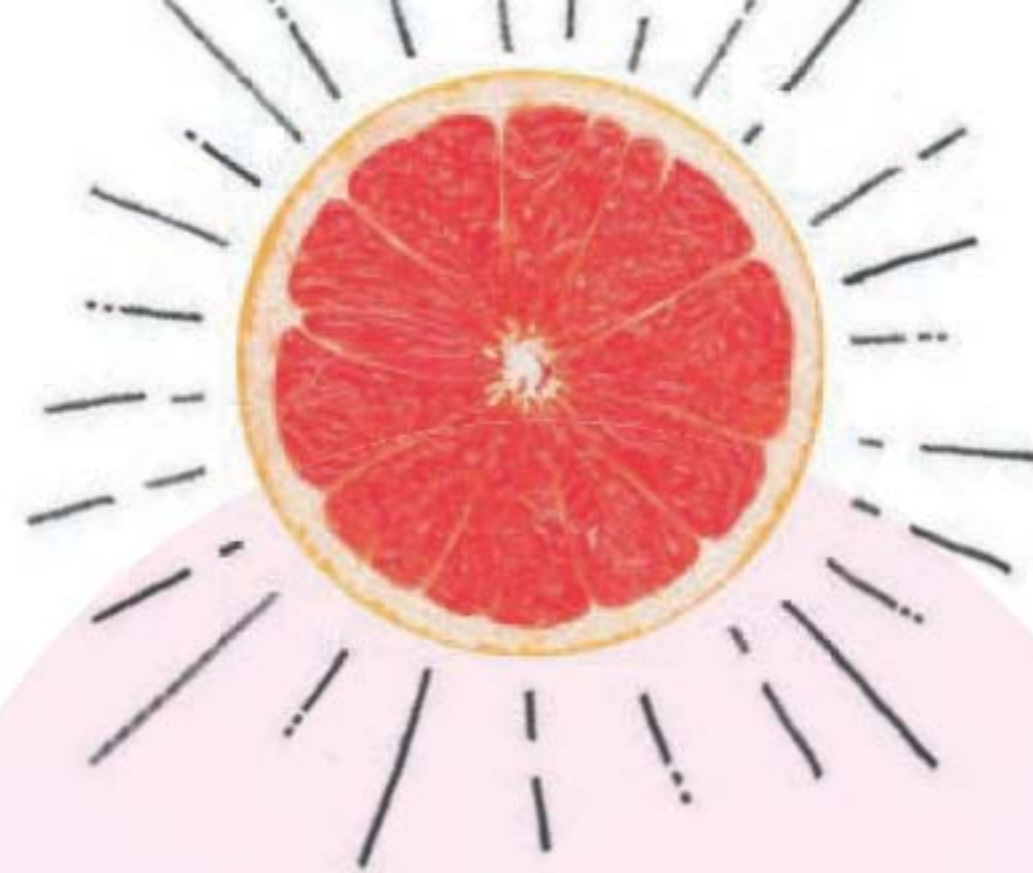
# good vibes are in the air

Scent your home and fill your space with the benefits of your favourite Avon Pure Essential Oil.



**HOW TO USE:**  
Fill reservoir with water and add a few drops of a single or blended essential oil.

❖ **Avon Pure Diffuser**  
LED light-up diffuser with three different settings releases a fine mist of essential oil and water into the air and helps refresh and purify your surroundings. 17 cm H. USB connection (USB power cord included).  
**222-928-9**  
**42.00**



## natural energy

Pure essential oils to use with a diffuser. Infuse your home and fill your space with the benefits of pure essential oils.  
**Take a breath!**

❖ **Avon Pure Essential Oils**

- Paraben/ gluten/ phthalate/ sulfate-free
  - Vegan
  - Made in Canada
- 10 ml

**Rosemary**

Stuck in neutral? This will help you get going.  
**223-206-5**

**Grapefruit**

Brightens up your day. **223-206-3**

**24.00 each or...**



**CHOOSE  
ANY 2 FOR  
34.00**

**PAGE 181**

To get the 2 FOR price, please order in multiples of 2.





**Bodyguard**  
Gives you a boost with an all-natural, powerful blend of sweet almond, clove, lemon, cinnamon, eucalyptus and rosemary. **221-704-5**

**Travel Ease**  
Bon voyage! This carefully blended formula includes ginger, almond, sweet orange, bergamot, lavender, rosemary and peppermint. **222-427-8**



**De-Stress**  
Like yoga in a bottle...it helps calm you. With sweet almond oil, lavender and peppermint. **223-204-8**

## get rolling

Pop a rollette in your pocket or purse and instantly transform your day wherever you go with the perfect blend of oils.

**Energize**  
Wakes you up from that mid-day slump. With sweet almond oil, grapefruit peel oil, sweet orange peel oil and rosemary leaf extract. **223-204-2**



**Focus**  
Helps boost alertness and concentration. With sweet almond oil, lemon peel oil and rosemary leaf extract. **223-206-1**



**HOW TO USE:**  
Apply roll-on directly to key areas of your skin (back of neck, temples, inside elbow) to experience the benefits.

❖ **Avon Pure Roll-On Essential Oils**  
• Paraben/ gluten/ phthalate/ sulfate-free  
• Vegan  
• Made in Canada  
10 ml  
**24.00 each**



## start fresh

Awaken your senses with this fresh and fortifying aroma. It's like hitting reset.



**Detox**  
Awakens your senses with a blend of sweet almond, juniper berry, lemon, peppermint, sweet fennel, rosemary and sandalwood. **221-631-8** reg. 24.00

**LIMITED TIME OFFER**  
**16.00**



# cooling sensation

From a natural blend of pure essential oils. May help with night sweats.

❖ **Avon Pure Keep Your Cool Essential Oil Cooling Mist**

Clary sage, known for its relaxing qualities, plus the cooling combination of peppermint and menthol, provide fast cooling relief to skin. May help with night sweats. Made in Canada. 115 ml  
223-207-9  
reg. 24.00  
20.00



**HOW TO USE:**  
Spray 2-3 times on the back of your neck, 1-3 times per day.

# sweet dreams

This calming mist will help you unwind and prepare for a good night's sleep.



**HOW TO USE:**  
Spray lightly on your pillow for a soothing night's sleep.



❖ **Avon Pure Essential Oils Lavender Pillow Spray**  
Shake well before use. Vegan. Not tested on animals. Petroleum/chlorine bleach/ammonia/phosphate-free. Made in Canada. 115 ml  
223-208-1  
reg. 27.00  
22.00





Relieve fatigue and promote alertness.

**Helps to temporarily relieve fatigue, promote endurance and enhance motor performance.**

Made with coffee fruit extract and clinically-studied caffeine from green tea.

**Natural Energy**

30 vegetarian, gluten-free capsules. Take 1 capsule daily.

**220-536-9**

reg. 30.00

**14.99 or...**

limited quantities



Go ahead, sleep!

**Naturally-sourced and non-habit forming, this supplement**

contains a proprietary combination of ingredients with melatonin to help reduce the time it takes to fall asleep.

**Restful Sleep**

Ideal for shift workers and people experiencing jet lag. 60 vegetarian capsules.

**220-539-7**

reg. 24.00

**14.99 or...**

limited quantities



Feel fuller, longer.

**Helps to temporarily support a feeling of fullness.**

To be used with a program of reduced calorie intake and increased physical activity to help weight management.

**Hunger Block**

60 vegetarian, gluten-free capsules. Take 2 capsules, three times daily with 240 ml (8 fl oz) of water and meals.

**220-540-8**

reg. 30.00

**14.99 or...**

limited quantities

**CHOOSE ANY 2 FOR 26.00**

**PAGE 186**

To get the 2 FOR price, please order in multiples of 2.

**LIVE A MORE VIBRANT LIFE, NATURALLY**

Support your overall health and experience results you can see and feel.

**SATISFYING PROTEIN SUPPLEMENT**

with sprouted quinoa and amaranth, yellow peas and globe artichokes.



CREAMY VANILLA



RICH CHOCOLATE

**Plant Power Protein**

Fuel up with naturally-sourced plant protein: 17.6 g for chocolate/18.3 g for vanilla. Providing essential amino acids for athletic support, and the maintenance of good health and digestive enzymes.

**10-Pack of Single-Serving Sachets**

Each sachet, 30 g

Vanilla **220-536-5**

Chocolate **220-536-4**

reg. 40.00

**ONLY 29.99**

each pack

limited quantities



**PACK OF 10 ONLY 120 CALORIES PER SERVING!**



TRANQUIL MOMENTS

# SOAK YOUR STRESS AWAY

Creates a relaxing cloud of softly scented bubbles that leaves skin supple and smooth.

473 ML

Soothe your senses with a serene blend of sheer bergamot, jasmine, rich florals and sandalwood.

**Relaxation Foam Bath**  
473 ml 184-764  
reg. 16.00  
**8.99**

**Room Spray**  
125 ml 185-005  
reg. 14.00  
**6.99**

**Bath & Shower Gel**  
150 ml 111-849  
reg. 12.00  
**5.99**



LARGE  
700 ML



**Tranquil Moments Relaxation Foam Bath**  
700 ml 232-501  
reg. 20.00  
**10.99**

**Body Exfoliation Gloves**  
One size fits most. Polyester. Hand wash, lay flat to dry.  
222-914-0  
**4.99 a pair**  
limited quantities



Use gloves in the shower or bath with your favourite cleanser





Got stress?  
**TAKE A LONG BATH!**



- AVON SENSES BUBBLE BATH**  
Dermatologically-tested. 700 ml
- Cherry Blossom **109-259-8**
  - Lily & Honeysuckle Blossom **109-228-8**
  - Cucumber Melon **109-260-3**
  - Sensitive Skin **109-282-4**
  - Orange & Honeysuckle **109-259-7**
  - Soft Pink **109-260-2**
  - Vanilla Cream **109-259-5**
  - Endless Ocean **109-260-1**
  - Lavender Garden **109-282-3**  
reg. 16.00  
**9.99 each**

**BACK BY POPULAR DEMAND**

**Wooden Bath Brush**  
Wash with soap and water, hang to dry between each use. 35 cm L x 7 cm W. Boar hair bristles/lotus wood handle/polypropylene cord.  
**222-552-3**  
**10.99**  
**limited quantities**





# GERMS DON'T STAND A CHANCE!



**Kills 99.99%**  
of bacteria in  
15 seconds.

**Antibacterial  
Hand Gel**  
Mild and gentle  
to skin. No water  
needed. 75 ml  
Fresh Cucumber &  
Melon **222-568-1**  
Silky Vanilla  
**222-568-0**  
reg. 10.00  
**5.99 each**

**SENSES** gently cleanses without drying

Hooked on  
shower gel.

**Hydrating  
Shower Gel**  
150 ml  
Silky Vanilla **108-470-6**  
Juicy Pomegranate &  
Mango **108-471-4**  
Fresh Cucumber  
& Melon **108-427-5**  
Blushing Cherry  
Blossom **108-425-2**  
reg. 9.00  
**5.99 each**



**Hand Soap**  
240 ml  
Fresh Cucumber & Melon **113-538-8**  
Silky Vanilla **113-538-7**  
reg. 14.00  
**8.39 each**





# REFRESH YOUR SENSES

Free from parabens, mineral oil, silicone, phthalates and dyes.

## AVON SENSES luxuriously scented, spa-inspired collections

### Fresh Bergamot & Wild Mint

Seize the day with a fresh bouquet of dewy flowers mixed with spicy bergamot, clean wild mint and luminous solar musk.

**Shower Gel**  
295 ml **221-935-4**  
reg. 24.00  
**19.99**

**Body Mist**  
236 ml **221-935-2**  
reg. 25.50  
**20.99**

**Body Lotion**  
236 ml **221-935-3**  
reg. 24.00  
**19.99**



### Sparkling Grapefruit & Orange Blossom

Wake up your senses with a juicy mix of zesty grapefruit, bright orange blossom, delicate honeysuckle and luscious peach.

**Shower Gel**  
295 ml **221-935-7**  
reg. 24.00  
**19.99**

**Body Mist**  
236 ml **221-935-5**  
reg. 25.50  
**20.99**

**Body Lotion**  
236 ml **221-935-6**  
reg. 24.00  
**19.99**



### Cozy Vanilla & Coconut

Envelop yourself in a cozy cloud of comforting vanilla, creamy coconut and calming chamomile.

**Shower Gel**  
295 ml **221-936-0**  
reg. 24.00  
**19.99**

**Body Mist**  
236 ml **221-935-8**  
reg. 25.50  
**20.99**

**Body Lotion**  
236 ml **221-935-9**  
reg. 24.00  
**19.99**





AVON AROMATHERAPY

# essential oils

help to improve the wellbeing of your **mind, body and spirit!**

**FOUR WAYS TO USE:**

1. Apply directly on skin (wrists, neck, temples, base of skull, bottom of feet)
2. Add to a warm bath
3. Mix into body lotion
4. Add to a room diffuser

SET OF  
2 OILS

**CALM OIL**

Find your inner bliss with comforting lavender and soothing star anise.

**Minding My Mood 4-in-1 Essential Oil Blends**

Includes Calm oil and Energize Oil. Each, 50 ml

**221-839-6**

reg. 40.00

**34.00** the set

**ENERGIZE OIL**

Feel refreshed and focused with lively mandarin and stimulating ylang-ylang.



## rosy all over

**Passion & Beyond  
Rose Silk Bouquet Shower Gel**  
Soft, silky lather of nourishing plant-derived glycerin and a naturally derived, mild cleanser leaves skin refreshed, lightly scented and moisturized. 300 ml  
**222-568-3**  
reg. 33.00  
**26.00**

**Passion & Beyond  
Rose Silk Bouquet Body Emulsion**  
Elegantly scented with calming damask rose water and infused with moisturizing and soothing provitamin B5, it helps revitalize tired skin, leaving it feeling petal soft and exquisitely scented. 300 ml  
**222-568-4**  
reg. 40.00  
**31.00**

BATH & BODY



# INDULGE IN THE LUXURY

of a world-class spa with natural ingredients sourced from around the world for the ultimate veil of moisture.

calming sage scent



**Himalaya Pink Salt Exfoliating Soap**  
Daily body scrub and cleansing bar, with mineral-rich Himalayan pink salt, walnut shell, apricot seed and cranberry powder. Calming sage scent. 150 g **222-462-0** reg. 12.00 **8.50**

**Himalaya Pink Salt Body Scrub & Cleanser**  
Mineral-rich Himalayan pink salt. Calming sage scent. 400 ml **221-903-4** reg. 21.00 **18.00**



## VEILMENT NATURAL SPA

**Black Rose Body Scrub & Cleanser**  
French rose oil and apricot seed powder. 400 ml **221-902-1** reg. 21.00 **18.00**

**Dead Sea Salt Body Scrub & Cleanser**  
Israeli Dead Sea salt. 400 ml **221-902-8** reg. 21.00 **18.00**

**Bamboo Charcoal Body Wash**  
Infused natural plant-derived exfoliants, including Korean bamboo charcoal, Israeli Dead Sea salt, apricot seed and spruce. 400 ml **222-443-6** reg. 33.00 **25.00**





# véilment hemp seed oil ultra-nourishing

A naturally derived oil enriched with omega-3-6-9 fatty acids and vitamin E.

## Dry Body Oil

Helps deeply nourish and hydrate dry skin to keep it looking healthy. 150 ml

222-338-6  
reg. 49.00  
40.00

## Shower Shake

Creamy yet light. Leaves skin feeling sumptuously soft and smooth. Shake before use. 300 ml

222-338-5  
reg. 33.00  
25.00

## Bathing Bar

Gently cleanses without stripping skin's moisture. Leaves skin feeling soft and nourished.

90 g 222-338-7  
reg. 7.00  
6.00

## Lip Balm

Hemp-infused lip balm enhanced with moisturizing jojoba and coconut oils for deeply hydrating, naturally conditioned lips. 4 g

Red 222-938-0  
Clear 222-938-1  
reg. 3.50  
2.49 each



Rich in vitamins and omega acids for luxuriously nourished, soft skin and antioxidants to help skin look radiantly youthful.



BATH & BODY

## INTRODUCING véilment macadamia oil

**NEW**

### Revitalizing Foaming Shower Gel

A gel cleansing foam infused with macadamia nut oil to deeply nourish and condition skin so it feels soft and pampered. 190 g 221-483-6  
reg. 34.00  
27.00

**NEW**

### Revitalizing Body Mousse

A soft, foamy mousse that deeply nourishes skin with pampering macadamia nut oil. So lightweight, it quickly melts into the skin for long-lasting moisturization. 190 g 221-483-5  
reg. 34.00  
27.00





No time?  
No worries!

**Elastine Restore & Detox Dry Shampoo**  
No wetting or resetting. Just spray, comb... done! Hair looks fresh instantly. Great for on-the-go or for extending time between shampoos.  
142 g  
reg. 27.00  
**22.49** each

# More than just a dry shampoo.

Our no-rinse, leave-in shampoo does all this instantly:

- CLEANSSES** No water needed. Leaves hair cleansed and freshly scented without rinsing.
- DETOXIFIES** With charcoal extract and soothing white tea powder, absorbs oil, sweat and odour. No talc powder or starch. No residue.
- ENHANCES COLOUR** Three shade-matching formulas. One is clear, great for blondes.
- EXTENDS STYLING** Leaves hair looking refreshed and restored with added volume.

## 3 shade matching formulas

- Enigmatic Dark  
**222-550-8**
- Fearless Brunette  
**222-550-9**
- Incredible Invisible  
**222-550-7**





# YOUR SOLUTION TO THINNING HAIR

Ginger and ginseng soothes redness and itching, and biotin helps thicken hair. No sulfates, parabens or silicones.



**Scalp Fortifying Exfoliating Shampoo**  
With rosemary extract, it gently exfoliates, helping to remove dirt and impurities. 250 ml  
**222-566-1**  
reg. 49.00  
**41.00**

**Scalp Fortifying Hair Thickening Shampoo**  
With coconut oil, it deep cleanses while helping moisturize dry scalp and hair. 400 ml  
**222-566-0**  
reg. 49.00  
**41.00**

**Scalp Fortifying Serum Treatment**  
Upon contact with water, the concentrated liquid transforms into a creamy formula that moisturizes and helps support healthy hair roots. 200 ml  
**222-566-2**  
reg. 49.00  
**41.00**

**Scalp Fortifying Massaging Tonic**  
With sophora root, an herb known to help support scalp health. Massage it in to help hair follicles absorb essential nutrients. 150 ml  
**222-566-3**  
reg. 66.00  
**55.00**

# HEMP FOR HAIR

Shampoo and conditioner with cold extracted hemp oil.

**Elastine HempharmX**  
Contains **omega 3-6-9**, known to help moisturize and nourish hair, and prevent breakage for weightless hydration that delivers full volume. 400 ml  
Shampoo **222-687-3**  
Conditioner **222-687-4**  
reg. 34.00  
**28.00 each**







## ELASTINE PROPOLITHERA

NO sulfates or parabens



**A. Volumizing Shampoo**  
Adds weightless volume and enhances texture to make hair look fuller, thicker and stronger. 500 ml  
222-244-8  
reg. 26.00  
22.49

**C. Hair Oil Serum**  
Helps to strengthen, protect, moisturize and smooth hair, and to add shine, while styling. 170 ml  
222-245-4  
reg. 26.00  
22.49

**B. Damage Repair Shampoo**  
Helps repair and soften damaged hair so it appears smooth and manageable. 500 ml  
222-245-1  
reg. 26.00  
22.49 each

**D. Hair Mask**  
Enriched with nutrients to help deeply nourish hair and mend damaged split ends. 300 ml  
222-245-3  
reg. 26.00  
22.49



## STYLING BOOSTERS

Nourish dry, thin and weak hair with the bee goodness of honey, vitamin-enriched propolis extract and royal jelly for healthy-looking body and shine, plus hydrolized collagen to infuse every strand with moisture for manageability and lustrous volume.

**Aloe Dual-Active Hair Serum**  
Packed with intensive hydration, it penetrates each strand with nutrients from vitamins and minerals to bring damaged or chemically processed hair back to life. Hydra Emulsion and Nutri Essence, 50 ml each.  
222-551-2  
reg. 42.00  
35.00

**Curl Cream**  
Rich hydration for bouncy, defined curls. Reduces frizz for a smooth, healthy-looking shine. 150 ml  
222-551-0  
reg. 27.00  
21.00

**Volume Spray**  
Adds weightless volume and lustrous texture to thinning hair. 200 ml  
222-551-3  
reg. 27.00  
21.00

**Leave-In Conditioner**  
Hydrates and nourishes dry hair, infusing it with rich lustre. 240 ml  
222-551-1  
reg. 27.00  
21.00

**Rejuvenating Serum Treatment**  
Upon contact with water, nutrient-rich liquid visibly transforms into a creamy formula. 230 ml  
222-627-0  
reg. 31.00  
26.00

**NEW Rejuvenating Volumizing Mousse**  
Lightweight formula helps add lift, bounce and body. Enhances elasticity and minimizes breakage for a flexible hold with natural-looking, long-lasting style and shine. Protects against heat, so it's perfect for blow-drying. 142 g  
222-551-4  
reg. 27.00  
21.00





## CHI® PRO TOOLS for salon-quality results

### BioSilk® Silk Therapy® Leave-In Treatment

Tames frizz and flyaways and leaves hair silky smooth with reflective shine. Helps shield hair from UV rays, heat and humidity. 167 ml  
**222-387-5**  
 reg. 48.00  
**39.00**



smooth  
as silk...  
weightless,  
leave-in  
silk  
treatment

### CHI® Styling Cream Gel

Create sleek styles or enhance natural curls with this workable styling cream gel with a light-hold, non-flaking formula that adds incredible shine and control to any style. Enriched with silk to strengthen hair. 177 ml  
**222-521-4**  
 reg. 29.00  
**24.00**



perfect  
prep for  
smooth  
blowouts

### CHI® ENVIRO 54® Natural Hold Hair Spray

For brushable hold of any style and texture. Anti-humidity. Thermal protectant ideal for blow drying. With silk to help build hair's strength and resilience, and natural botanicals to add volume and enhance shine. Paraben-free. 284 g  
**222-539-3**  
 reg. 38.00  
**31.00**



lightweight  
and fast-drying  
with no build-up

### ❖ CHI® Advanced Ionic Compact Hair Dryer

Powerful 1875-watt ion generator emits negative ions to reduce drying time for shiny, smooth, frizz-free hair. Adjustable heat and air-speed settings. 1.9 metre cord. **222-337-9**  
 reg. 175.00  
**159.00**



### ❖ CHI® Volcanic Lava Ceramic Pro Spin 'n' Curl

2.5 cm (1") pro automatic rotating curling device. Preset temperature controls with adjustable timers and LED screen display, for all hair types. 30 cm L. Dual voltage for travel. 3.35 metre swivel cord. **222-338-1**  
 reg. 210.00  
**189.00**



### ❖ CHI® Ceramic Hairstyling Iron

This 2.5 cm (1") W styling iron straightens, curls, flips, waves and smooths frizz with an all-in-one ergonomic design. Hair looks instantly healthy, silky and shiny. Ceramic floating plates for versatile styles. 31 cm L. 2.74 metre swivel cord. Dual voltage for travel. **222-338-0**  
 reg. 145.00  
**129.00**



## CHI® ESSENTIALS

*'do it*  
**LIKE A PRO**



### Replenishing Shampoo

Gentle daily shampoo with essential vitamins, minerals and amino acids. No sulfates or parabens—so it won't strip hair of natural oils. Safe for colour-treated hair. 355 ml **222-707-3**  
 reg. 26.00  
**22.50**



### Moisturizing Conditioner

Lightweight daily conditioner. Infused with aloe to lock in rich moisture. With vitamins A and B to help strengthen hair from root to ends, increase elasticity and help smooth split ends and frizz. 355 ml **222-707-4**  
 reg. 26.00  
**22.50**



### Repairing Serum

Deeply penetrating-yet-lightweight serum helps strengthen, protect, moisturize and smooth. With vitamin A to help seal split ends, and rosemary to help boost volume and shine. 177 ml **222-707-5**  
 reg. 44.00  
**37.00**



### Thermal Protecting Spray

Helps protect hair from the damaging heat from styling tools. Silk molecules help lock in moisture and strengthen cuticles for frizz-free, shiny hair. 177 ml **222-707-6**  
 reg. 38.00  
**31.00**



HAIR CARE



## WRAP & TWIST HAIR TOWEL

Luxurious soft microfibre towel dries hair in no time!

**Black Microfibre Hair Towel**  
Black polyester/nylon/plastic. Tapered design fits most. Machine wash, hang to dry. 65 x 28 cm at widest point. **222-615-3**  
**12.50**  
limited quantities



## GOODBYE KNOTS AND TANGLES!

Unique hairbrush glides through wet or dry hair without tugging or pulling for pain-free detangling.

Ergonomic shape fits perfectly in your hand



Flexible bristles move easily through knots and tangles, minimizing hair breakage

**NEW**

**Detangling Hairbrush**  
18 x 7 x 3 cm. ABS/thermoplastic polyester elastomer. **223-251-1**  
**8.99**  
limited quantities

Modern marble-like design



# ELASTINE BOTANICALS

Infused with revitalizing babassu seed oil, chamomile flower water, and lemon chestnut extract, and pH balanced

**NO**

Parabens  
Silicone  
Mineral oil  
Triclocarban  
Triclosan



**Cherry Blossom & Hyaluronic Acid**  
**Moisturize dry, damaged hair with our hyaluronic acid-infused formula as thirsty strands drink it up. 200 ml Shampoo **222-566-4** Conditioner (not shown) **222-566-5****

**Avocado & Quinoa Anti-Frizz**  
With nourishing avocado oil and quinoa seed extract to help protect hair from damage and prevent breakage. 200 ml Shampoo **222-566-8** Conditioner (not shown) **222-567-0**

**Rosemary & Sea Salt Volumizing**  
With rosemary to help promote thicker and healthier hair, and sea salt to add body. 200 ml Shampoo **222-566-6** Conditioner (not shown) **222-566-7** reg. 8.00 **6.29 each**





## ADVANCE TECHNIQUES

### 360 Nourish Leave-In Treatment with Moroccan Argan Oil

Leave-in treatment for all hair types, leaves hair looking softer and healthier. Formulated with argan oil, provitamin B5 and vitamin E, it helps to nourish and smooth, dry, damaged hair. 60 ml **119-335-1** reg. 22.50 **14.99**

### Daily Shine 2-in-1 Shampoo & Conditioner

Cleanses and conditions in one simple step. Leaves hair feeling soft and shiny. 350 ml **242-085** reg. 12.50 **7.99**

### Daily Shine Dry Ends Serum

Smooth away frizz and flyaways. Leaves hair soft, silky and smooth. 60 ml **243-496** reg. 16.00 **10.49**

## BEAUTY SLEEP

Minimize frizz and split ends with our luxurious satin pillowcase.

### Good Hair Day Satin Pillowcase

Fits a standard size pillow. Polyester. 51 x 66 cm. Machine wash, hang to dry. **222-428-6** **13.49** limited quantities



Helps to keep hair healthy, shiny and a longer-lasting blow-out!

Soft fabric allows skin to breathe and prevents sleep creases

Features flap to secure pillow



## MINI BRUSH

smooths and detangles



 Pocket-sized fits in your purse

### NEW

Great for styling and touchups.

### Lavender Travel Brush

14 cm L. Man-made materials. **222-396-1** **3.99** limited quantities



**LISTERINE® REACH®** your oral care is in good hands

**Total Care™ Dental Floss**  
Removes up to 2X more plaque than the leading easy-gliding floss. Fresh minty flavour. Polypropylene multi-filament. 27.4 metres  
**223-267-7**  
**4.99**



**Cool Mint™ Extra-Wide Waxed Floss**  
A hint of mint flavour every time you floss. Polypropylene multi-filament/wax. 41.1 metres. **223-266-8**  
**3.49**



**Waxed Floss**  
Polypropylene multi-filament/wax. 50.3 metres  
**Cool Mint™**  
A hint of mint every time you floss. **223-266-7**

**Fresh Burst™**  
Leaves your mouth feeling fresh with a burst of mint. **223-267-1**  
**2.99 each**



**Waxed Floss**  
Polypropylene multi-filament/wax. 182.8 metres  
**Unflavoured**  
Floss slides easily and cleans between teeth for a fresher mouth and healthier smile. **223-268-4**  
**Fresh Burst™**  
Leaves your mouth feeling fresh with a burst of mint. **223-267-0**  
**7.99 each**

VALUE SIZE



To use:  
Move floss up and down between each tooth. Clean below the gum line. Rinse floss as needed. Replace head daily.



**Ultraclean™ Flosser + 8 Heads**  
Includes 1 flosser and 8 disposable snap-on heads that enable quick, hygienic changes. Polypropylene multi-filament/plastic. **223-268-0**  
**6.99 9-piece set**



**PERIOE ORAL CARE** for a healthy bright smile

**White Action Toothpaste**  
Fluoride-free formula with baking soda effectively cleans and whitens teeth, and naturally refreshes breath. Each, 160 g  
Strong Mint **222-694-6**  
Original Mint **222-694-5**  
reg. 5.99  
**4.19 each**



**White Action Toothbrush**  
Effectively removes plaque and surface stains. Round-edge medium bristles for a gentle clean and healthy mouth.  
Green **222-711-7**  
Blue **222-694-7**  
reg. 3.00  
**2.49 each**

**2-in-1 Whitening Toothpaste**  
Booster gel activates whitening toothpaste to remove stains and whiten teeth faster and more effectively than with either alone. Fluoride-free. Innovative dual system! Booster gel accelerates whitening power. Whitening toothpaste with hydrogen peroxide. 140 g  
reg. 42.00  
**34.99 each**



**Pink Mild Mint**  
**222-371-9**

**Charcoal Cool Mint**  
with activated charcoal **222-431-6**

**Royal Black Bee Honey Mint Toothpaste**  
Fluoride-free. With royal jelly and Australian propolis extract. Helps remove plaque and whiten teeth. 100 g  
**222-555-7**  
reg. 9.00  
**7.00**



With hydrogen peroxide, helps to instantly remove stains from food, coffee, wine and lipstick.  
**Teeth Whitening Pen**  
Clear gel with hydrogen peroxide with easy silicone tip. 4 ml **222-825-6**  
reg. 37.00  
**27.99**







**ITCH RELIEF**

**Anti-Itch Cream**

For temporary relief of minor irritations due to eczema, psoriasis and insect bites. Suitable for sensitive skin. Medicinal ingredient: Hydrocortisone, 0.5%. 56.7 g  
**223-102-7**  
 reg. 13.99  
**11.49**



**FOR CUTS, SCRAPES & BURNS**

**Poly Antibiotic Ointment**

Helps prevent infection in minor cuts, scrapes and burns. Active ingredients: Bacitracin and Polymyxin B Sulfate. 28 g  
**223-103-0**  
 reg. 19.99  
**15.49**



the well-stocked  
**medicine cabinet**

**WIPES**

**Babience Baby Wipes**

Gentle and safe. Dermatologically-tested. Free of alcohol, perfume and parabens. 98% pure water. 70 sheets. **222-444-5**  
 reg. 9.00  
**6.99**

**70 SHEETS**  
 PH balanced  
 to match  
 baby's skin



**TOOTHPASTE**

**Perioe Strawberry Pumping® Toothpaste**

Fluoride-free formula suitable for kids under age 5. 160 g  
**222-337-7**  
 reg. 24.00  
**19.99**

fluoride free with  
 strawberry flavour!



**BODY LOTION**

**Babience Kids Body Lotion**

Moisturizing body lotion with shea butter and olive oil infuses dry skin with intense moisture and leaves it feeling nourished. Dermatologically-tested. No parabens. 380 ml  
**222-337-5**  
 reg. 28.00  
**22.99**

peach  
 scent



**HAIR & BODY WASH**

**Babience Kids Hair & Body Wash**

2-in-1 wash with shea butter and olive oil. Cleanses while it conditions. Rich, creamy foam leaves your little one's hair feeling soft and smooth. Dermatologically-tested. No sulfates or dyes. Peach scent. 380 ml  
**222-337-4**  
 reg. 24.00  
**19.99**





**DAILY ESSENTIALS**

**NEW**

**Véilment Care Lip Balm**

Infused with moisturizing jojoba oil and shea butter to keep lips soft and supple all day. Delicately scented and tinted. 4 g  
reg. 3.00  
**1.99 each**



Cherry  
222-937-8

Strawberry  
222-937-9

Coconut (with coconut oil)  
223-132-1

Aloe (with aloe extract)  
223-132-2

**Lip Balm** Each, 4 g

**Moisture Therapy Moisturizing Lip Treatment Balm**

Intensive Healing & Repair  
221-985-3  
Daily Defense 222-571-5  
Calming Relief 222-571-4

**Dew Kiss Lip Dew**

221-971-2  
**Flavor Savers Lip Balm**  
Vanilla 221-971-9  
Strawberry 221-971-7  
Melon 221-971-8

reg. 3.00  
**1.99 each**



**Perfumed Liquid Deodorant**

- Easy fingertip application
- Long-lasting odour protection
- Aluminum-free
- Delicate floral scent
- Quick-drying
- Anti-stain formula

59 ml  
298-088  
reg. 9.00  
**5.99**



**Véilment Care Moisturizing Bar Soap**

Plant-based cleanser, derived from olive oil and infused with coconut oil, moisturizes as it gently cleanses, leaving skin beautifully soft and delicately fragranced. 80 g  
222-694-9  
reg. 3.50  
**2.79**

creamy,  
comforting  
coconut  
scent



**back scrubber**

Double-sided scrubber provides gentle exfoliation and deep cleansing.

Reaches all areas of your back



60 cm long!

**NEW**

**Exfoliating Back Scrubber**  
One side features textured surface for exfoliating, the other side features soft terry for cleansing. 60 x 9.5 cm. Terry/polyester/rayon/polyurethane. Machine wash, line dry. 223-229-9  
**9.99**  
limited quantities



**FOOT WORKS** hard-working formulas for hard-working feet



**Overnight  
Renewing Cream**  
Conditions while  
you sleep. With  
jojoba oil. 100 ml  
**116-647-7**  
reg. 13.00  
**7.99**



**Deep  
Moisturizing  
Cream**  
24-hour  
moisturization.  
75 ml  
**116-648-2**  
reg. 10.00  
**5.99**



**Intensive  
Moisture  
Foot Cream**  
Gentle, mild  
and suitable  
for sensitive  
skin. 75 ml  
**116-647-9**  
reg. 10.00  
**5.99**



**Cracked  
Heel Cream**  
Helps soften dry,  
cracked heels.  
75 ml **117-059-2**  
reg. 10.00  
**5.99**



**Arthritis Achy  
Foot & Muscle  
Cream**  
Provides warming  
pain relief. Contains  
glucosamine  
and chondroitin.  
75 ml **117-059-3**  
reg. 10.00  
**5.99**



**Deodorizing  
Spray**  
Can also  
be used in  
footwear.  
100 g  
**116-648-6**  
reg. 13.00  
**8.49**



**Antifungal Spray  
for Athlete's Foot**  
Helps relieve itching  
and cracking.  
100 ml  
**117-955-3**  
reg. 13.00  
**7.99**



**Lavender  
Softening Balm**  
With vitamin E,  
jojoba oil, cocoa  
butter and shea  
butter. 50 g  
**116-648-4**  
reg. 10.00  
**5.99**



Soften and pamper  
your feet to the max  
with our Intensive  
Callus Cream.



**Intensive Callus Cream**  
Softens hard calluses and significantly  
improves the look of dry, rough feet.  
100 ml **117-663-5**  
reg. 13.00

**LIMITED TIME OFFER**  
**4.99**



# Moisture Therapy Balance & Soothe



**Moisture Therapy +Balance and Soothe Body Lotion**  
Replenishes moisture to leave skin softer, smoother and healthier-looking.  
390 ml **222-431-8**  
reg. 35.00  
**28.00**

**Moisture Therapy +Balance and Soothe Body Wash**  
Gently cleanses and leaves skin soft, smooth and healthy-looking.  
390 ml **222-431-7**  
reg. 33.00  
**25.00**

**Moisture Therapy +Balance and Soothe Body Cream**  
Replenishes skin with moisture for smoother, softer, healthier look.  
150 ml **222-431-9**  
reg. 26.00  
**21.00**

# Goodbye, dry... hello, hydrated skin!

So intense! Healing moisture lasts up to 24 hours!



**Moisture Therapy Intensive Healing & Repair Extra Strength Cream**  
Healing moisture that lasts 24 hours. With regular use, relieves the most severe dry skin conditions. Fragrance-free  
150 g **101-614-5**  
**12.00 each or...**  
**2 FOR 10.00**  
To get the 2 FOR price, order in multiples of 2.



# hydration heroes to the rescue



**Moisture Therapy  
Body Lotion**  
Dermatologist  
tested.  
Hypoallergenic.  
Fragrance-free  
1 litre.  
**Intensive Healing  
& Repair**  
101-739-0  
**Daily Skin Defense**  
101-624-0  
**Calming Relief**  
102-011-8  
reg. 28.00  
**18.99 each**

1 LITRE  
body lotions



# TLC for your hands!

quickly relieves  
dry, itchy skin

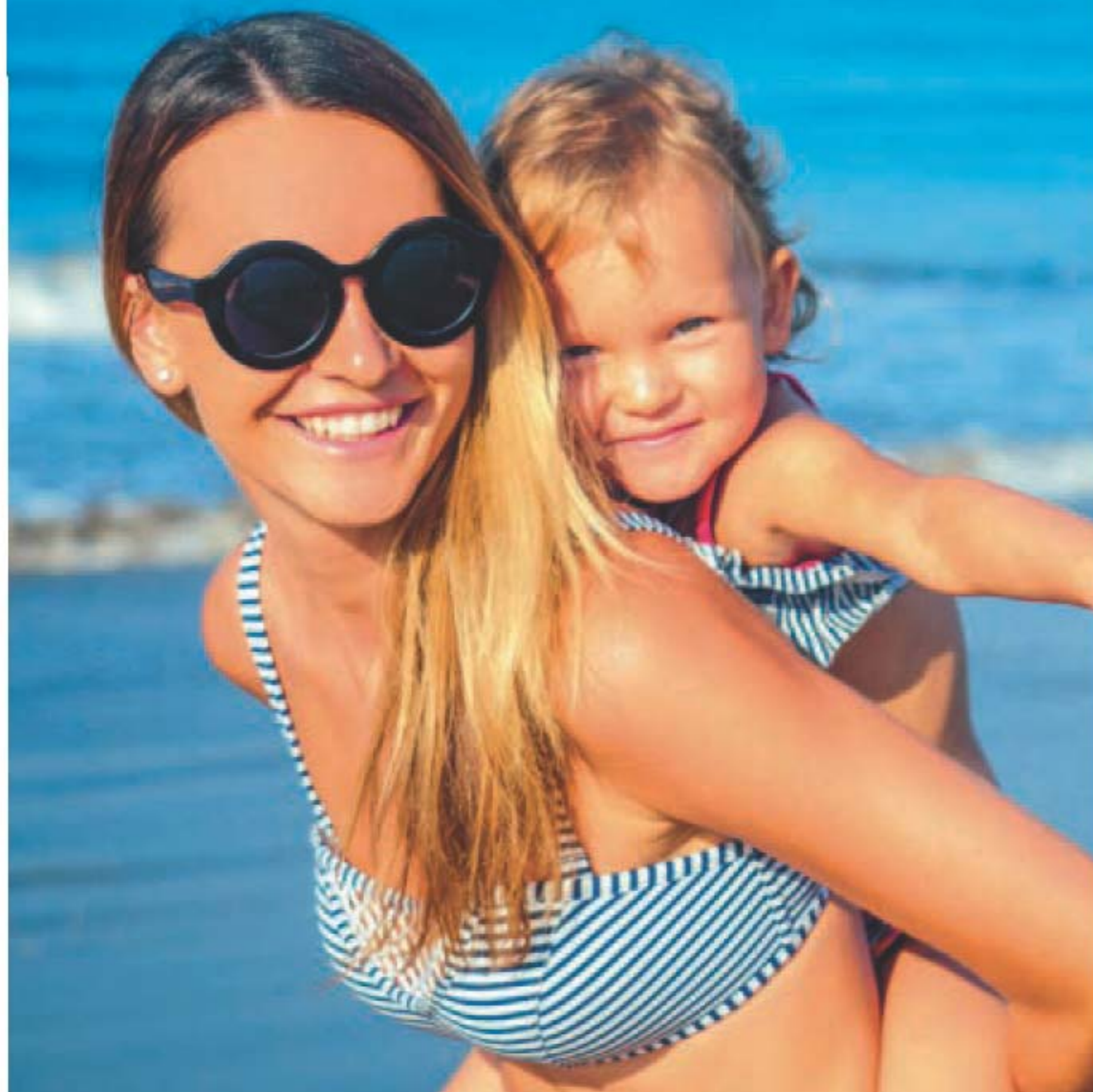
**Moisture Therapy  
Hand Cream**  
125 ml  
Daily Skin Defense **101-614-9**  
Calming Relief **101-614-8**  
Intensive Healing &  
Repair **101-615-3**  
reg. 9.00  
**3.99 each**





# natural mineral protection

for every day in the sun



## for body:

Water and sweat resistant for up to 80 minutes.



## for face:

Light texture, non-whitening.



**AVON PURE**  
Broad-spectrum protection.  
Hypoallergenic. Biodegradable.  
**Natural and organic certified.**  
Great for the whole family.

## NEW

### ❖ Natural Mineral Sunscreen Lotion Broad Spectrum SPF 40

Its hydrating formula with SPF 40, protects and nourishes skin. Gluten and GMO free. Not tested on animals. 90 ml **223-410-4** reg. 24.99 **21.99**

## NEW

### ❖ Natural Mineral Face Sunscreen Broad Spectrum SPF 25

This lightweight formula with SPF 25, protects and hydrates skin. Vegan. Gluten and GMO free. Not tested on animals. 40 ml **223-410-5** reg. 24.99 **21.99**



# take back the great outdoors



## Skin So Soft Bug Guard *plus* Icaridin ALWAYS DEET-FREE

Strong, dependable protection\*

- Repels mosquitoes for 5 hours
- Repels deer ticks for 7 hours
- Pleasant scent
- Non-greasy

### pack of 8



#### Skin So Soft Bug Guard *Plus* Icaridin Insect Repellent Towelettes

Eight individually wrapped towelettes that fit easily in your pocket. **107-390-6**  
reg. 20.00  
**12.99** pack of 8

### aerosol spray:

fast drying



#### Skin So Soft Bug Guard *Plus* Icaridin Insect Repellent Spray I

113 g **453-314**  
reg. 23.00  
**14.99**

### 118 ml

fast drying

Skin So Soft  
Bug Guard *Plus*  
Icaridin Insect  
Repellent Spray II  
118 ml **120-440-3**  
reg. 17.00  
**9.99**



### family size

fast drying

Skin So Soft Bug  
Guard *Plus* Icaridin  
Insect Repellent  
Spray II - Family Size  
236 ml **120-437-7**  
reg. 27.00  
**17.99**

\*Against certain insects. Read and follow label directions and precautions.





**SEA SALT AND AMALFI LEMON**

Fresh and delicate with sparkling notes of Amalfi lemon and soft sea salt.



**POMPELMO**

Fresh and slightly tangy, Pompelmo is a citrusy blend of grapefruit and cucumber.



**LIME ZEST AND CYPRESS**

Feisty lime zest meets warm and comforting cypress.



**CORIANDER AND OLIVE TREE**

A delicate blend of coriander seeds and olive wood.



luxuriously scented  
**hand  
creams**



Comes in an elegant gift box



**Cucina Hand Cream Gift Set Includes:**

Enriched with first cold-pressed olive oil. 50 ml each.

- Sea Salt and Amalfi Lemon
  - Pompelmo
  - Coriander and Olive Tree
  - Lime Zest and Cypress
- 223-158-0  
20.00 the set while supplies last

**BUY 1  
GIFT SET  
GET 1  
HALF  
PRICE!**



# nourishing hand soaps & lotions

Inspired by Italian tradition, Cucina is formulated with the highest-quality natural ingredients. Gentle on your hands as it is on the environment.



## SEA SALT AND AMALFI LEMON

Fresh and delicate with sparkling notes of Amalfi lemon and soft sea salt.

**Hand Soap 1 Litre Refill**  
1 litre. 223-207-5  
reg. 38.00  
**28.50**

**Hand Lotion**  
300 ml 221-939-1  
reg. 24.00  
**20.00**



**Waterless Hand Soap**  
Cleans hands in seconds, no rinsing necessary. Enriched with plant-derived glycerin. No colourants.  
240 ml 222-559-3  
reg. 18.00  
**13.00**

## CORIANDER AND OLIVE TREE

A delicate blend of coriander seeds and olive wood.

**Hand Cream**  
60 ml 221-939-4  
reg. 12.00  
**10.00**

**Hand Lotion**  
300 ml 221-939-0  
reg. 24.00  
**20.00**

**Hand Soap 1 Litre Refill**  
1 litre. 223-207-4  
reg. 38.00  
**28.50**

**Mini Refill Hand Soap**  
250 ml 223-520-3  
**8.00**







keep hands  
**clean & soft**

**LIME ZEST AND CYPRESS**

Energizing and invigorating feisty lime zest meets warm and comforting cypress.

**Hand Soap Refill**

600 ml  
221-938-9  
reg. 26.00  
22.00

**Hand Lotion**

300 ml  
221-939-3  
reg. 24.00  
20.00



**VERBENA AND YUZU**

Sparkling and fruity the uplifting freshness of verbena and sweet yuzu.

**Hand Soap Refill**

600 ml  
222-389-7  
reg. 26.00  
22.00

**Hand Lotion**

300 ml  
222-389-8  
reg. 24.00  
20.00





**CUCINA**  
FRUITS & PASSION

# delicately scented hand soaps

Inspired by Italian tradition



## VERBENA AND YUZU

Sparkling and fruity the uplifting freshness of verbena and sweet yuzu. **222-389-6**

## SEA SALT AND AMALFI LEMON

Fresh and delicate with sparkling notes of Amalfi lemon and soft sea salt. **222-550-5**



Cucina is formulated with the highest-quality natural ingredients.

Gentle on your hands as it is on the environment.

## GRAPEFRUIT AND RHUBARB

Bright and illuminating. Zesty grapefruit combined with refreshing rhubarb. **222-550-6**

## CORIANDER AND OLIVE TREE

A delicate blend of coriander seeds and olive wood. **222-549-1**

⊛ Hand Soap  
400 ml  
24.00 each or..

**ONLY  
12.99**

WITH EVERY 20.00  
PURCHASE FROM  
PAGES 188-235



# add rich moisture to dry skin

rich, emollient  
face cream  
combats dryness  
and flakiness

**Solutions Nurtura  
Replenishing Cream**  
50 ml  
115-893-9  
reg. 14.00

**LIMITED  
TIME OFFER  
6.99**



**BUY NOW! BROCHURE IS VALID FOR A LIMITED TIME. SEE BELOW.**

## Campaign 16, 2021

The advertised prices featured in this brochure (errors and omissions excluded) are Avon's retail prices for this current campaign and are applicable to online or Representative channel purchases only. [Your] Representative[s] set[s] their own selling price depending on the channel of purchase. All prices exclude applicable taxes. All prices and promotions (excluding delivery) featured in this brochure are valid for orders placed during this campaign only.



See our commitment at:  
[avongivesback.ca](http://avongivesback.ca)



Member of The Canadian  
Direct Sellers Association

**KINDLY SUBMIT YOUR ORDER BY:** \_\_\_\_\_



@MyAvonCanada

1-800-265-2866  
[avon.ca](http://avon.ca)

## 100% SATISFACTION GUARANTEED

If you are not happy with any purchase,  
return the product through  
the same channel of purchase.

**If you purchased online**, return the product  
to Avon within 30 calendar days from the date  
stated on your receipt for your money back.

**If you purchased from an Avon Independent  
Sales Representative**, products must be  
returned to your Representative along with  
your receipt within 30 calendar days from the  
delivery date stated for a replacement,  
exchange or your money back.

Certain restrictions apply. Details of the Return  
Policy can be found on your receipt or at [avon.ca](http://avon.ca).

FSC (IND.) 4465741  
FSC (10) 4465771