

AVON

CAMPAIGN 17



brighten
up!

FREE

Vitamin C Illuminating Priming Moisturizer
See inside



Avon Vitamin C Illuminating Priming Moisturizer
Wear alone or under makeup.
50 ml 914-671
reg. \$48
\$33.99 \$25.49

FREE

Avon Vitamin C Illuminating Priming Moisturizer
with \$42 purchase, pages 2-9. \$48 value
Limited quantities.

brighten up with the **power of C**

Vitamin C, a super ingredient known to help **brighten** the look of **dullness** and **skin tone**, also has **antioxidant properties** known for helping skin to look **healthy** and **radiant**.



has as much
vitamin C as
30 ORANGES

Avon Vitamin C Brightening Serum
Skin appears energized and brighter with the power of 10% pure vitamin C. 30 ml
522-066
reg. \$62
\$38.99 \$28.99

GET AN EXTRA 25% OFF Final prices as shown.



**the radiance squad
that helps your
face, eyes & lips
look brighter**

REDUCES
the look of dark circles

**Anew Vitamin C
Brightening Eye Cream**
Under-eye area looks
brighter and more even
toned. 15 ml **953-602**
reg. \$48

~~\$33.99~~ **\$25.49**

PEELS
away dullness

**Anew Vitamin C
Exfoliating Peel Pads**
With PHA and pineapple
extract, vitamin C, panthenol
and glycerin. Helps brighten
skin's look. 130 ml,
70 pads. **169-143**
reg. \$40

~~\$31.99~~ **\$23.99**

**healthy looking lips in
ONE SMOOTH KISS**

**Anew Vitamin C
Antioxidant Lip Treatment**
Hydrates lips with vitamins
C and E. 3.8 g
784-547
reg. \$20

~~\$13.99~~ **\$10.49**



triple power:

antioxidants 7% vitamin C, 2% ferulic acid and vitamin E



TARGETS
the look of
uneven skin tone
and dullness

**Anew Vitamin C
Targeted Skin
Brightener**
Skin looks brighter
and more even toned
with a dramatically
improved appearance
in overall skin clarity.
With moisturizing
allantoin and aloe.
15 ml
169-177
reg. \$48

~~\$33.99~~ **\$25.49**

See page 2. **FREE GIFT + AN EXTRA 25% OFF** Final prices as shown.



every body:

Get ready to look luminous all over with the Super C team! We've got you covered.

MELTS INTO BODY for a radiant finish

Anew Vitamin C Dry Body Oil
Sunflower seed and jojoba oils help skin feel supple.
100 ml 074-432
reg. \$48
\$27.99 \$20.99

SEE RADIANCE LOOK RESTORED smooths on like butter

Anew Vitamin C Nourishing Body Butter
Hydrating shea butter and niacinamide, plus vitamins C and E, help restore the look of radiance. Fruity-floral and citrus scent. 230 ml 443-767
reg. \$45
\$28.99 \$21.49

SUPER EXFOLIATOR oh, glow on!

Anew Vitamin C Glow Body Scrub
Sugar base with pineapple and papaya enzymes, and coffee seed extract. Citrus scent. 255 g 443-752
reg. \$50
\$28.99 \$21.49



See page 2. **FREE GIFT + AN EXTRA 25% OFF** Final prices as shown.

NIGHTTIME MOISTURIZER + HYDRATING SERUM

Anew Platinum Night Cream

Helps firm the look of sagging jawline and reduces the appearance of horizontal neck lines. 50 g

Avon Solutions Nurtura Serum

With skin-loving ingredients known to help combat dryness and flakiness, and help hydrate. 30 ml

BOTH FOR \$42

\$84 VALUE

397-980



NIGHTTIME MOISTURIZER + BANISHING SERUM

Anew Ultimate Multi-Performance Night Cream

Works while you sleep to revive and recreate the look of youthful skin. 50 g

Avon Solutions Banishing Serum

With arbutin, niacinamide and licorice extract to help improve the appearance of uneven skin tone. 30 ml

BOTH FOR \$42

\$84 VALUE

397-961



WRINKLE CORRECTOR + PEEL

Isa Knox Anew Clinical Revitalize & Reveal Advanced Wrinkle Corrector

Helps reduce the look of lines and wrinkles. 50 ml

Isa Knox Anew Clinical Revitalize & Reveal Extra Strength Retexturizing Peel

Results similar to a 35% pro glycolic peel.* 30 fragrance-free pads.

*In 6 out of 8 attributes tested over a 7-week period.

BOTH FOR \$42

\$112 VALUE

397-995



squeeze the day

Pick your pairs, then add
Anew Vitamin C Illuminating
Priming Moisturizer - or any
of our vitamin C formulas
(pages 2-7) - to your regimen
and brighten up your day!



FIRMING CREAM + CLEANSER

Isa Knox Anew Clinical Collagen Booster Firming Cream

With moisturizing niacinamide and squalane. Hygienic, airless pump. 50 ml

Rice Water Bright Mild Cleansing Water

Removes makeup and impurities via the micellar method, so no need to rinse off! Tired-looking, dull skin appears radiant and revitalized. 500 ml

BOTH FOR \$42

\$90 VALUE

398-001



92% of women believe it dramatically improves skin's overall appearance.*



Anew Power Serum
Improves the look of wrinkles, radiance, firmness and texture. Use AM and PM after cleansing, before moisturizing. 30 ml
838-047
reg. \$63
\$41.99

*Based on those who expressed an opinion in a consumer perception study.



our highest sun protection for face and body



ISA KNOX ANEW SOLAIRE

Everyday Face Lotion
Broad Spectrum SPF 50
50 ml 281-418
reg. \$45
\$35.99

Active Face & Body Lotion
Broad Spectrum SPF 50
80 ml 531-435
reg. \$55
\$41.99

Everyday Mineral Face Protection
Cream Broad Spectrum SPF 50
Suitable for sensitive skin.
Lightweight formula with zinc oxide.
Water-resistant up to 40 minutes.
50 ml 941-708
reg. \$45
\$35.99



BROAD SPECTRUM SUN PROTECTION

WITH

- HYALURONIC ACID
- CERAMIDES
- CENTELLA ASIATICA

PLUS

- BLENDS SEAMLESSLY
- PERFECT FOR ALL SKIN TONES
- FORMULATED WITHOUT FRAGRANCE

BEYOND GLOW DAY

Milk SPF 50
With higher SPF.
50 ml
150-278
reg. \$55

Moisturizer SPF 30
For face and body.
50 ml
149-737
reg. \$55

\$42.99 each

sun care that doubles as skin care

BEYOND GLOW SUNSCREENS



SPF 50
rich milky
texture for
extra care



SPF 30
lightweight
texture for
everyday wear

Best of
K-Beauty

Hydrate

**Beyond Glow
Lipcerin Intensive
Nourishing
Lip Care**
reg. \$35
\$25.99



Nourishing
052-325

An intensive, glistening formula that hydrates. With peptide, moisture enhancing glycerin and shea butter. Clear finish. 15 ml

Cool

**Beyond Glow
Lipcerin
Plump and Cool
Lip Care**
reg. \$35
\$25.99



Plump and Cool
052-344

An intensely moisturizing, glistening formula that plumps and softens the look of lips. With cooling menthol to help increase the appearance of lip volume. Clear finish. 15 ml

Tint

**Beyond Glow
Lipcerin
Hydrating Tinted
Lip Care**
reg. \$35
\$25.99
each



Twinkle
052-750



Flash
052-909



Gleam
053-097



Flare
053-101



Splendor
053-078



Smolder
053-140

An intensely moisturizing, glistening formula that softens the look of lips and adds a glossy hint of colour. With peptide, moisture enhancing glycerin and shea butter. 15 ml

shifting shades magic results

Presto change-o! Formula interacts with your lips' pH and transforms to your personalized shade of pink.



**Beyond Glow Lipcerin
Color Shift Tinted
Lip Care**
reg. \$35
\$25.99 each

An intensive, glistening formula that hydrates dry lips with peptide, moisturizing glycerin, shea butter and fruit extracts while adapting to your lips for a customized shade. 15 ml



Day Shift
Lemon/lime shade shifts to a **warm pink** on lips.
840-756



Night Shift
Black shade shifts to a **cool pink** on lips.
840-760

96%
Said skin
feels
smooth*



100%
Said it
thoroughly
melts
away
makeup*



Cleansers with benefits

fruit-infused cleansers

Cleanse + Remove Makeup

For All Skin Types

With Kiwi Extract, Vitamins B3, B9 and Provitamin B5

**Beyond Glow
Gentle Foaming Cleanser
with Vitamins + Kiwi**

A gentle foaming water-based cleanser that easily washes off makeup and residue without stripping your skin, leaving it feeling soft and smooth. Skin looks brighter and revitalized. 150 ml

575-760
reg. \$27

\$20.99

For All Skin Types

With Mango Butter
& Papaya Enzyme

**Beyond Glow
Melting Balm Cleanser
with Enzyme + Mango Butter**

Transforms into a silky oil when massaged onto skin. Add water for a creamy cleansing milk that rinses away makeup and residue, leaving your skin feeling soft, smooth and refreshed. 150 ml

575-865
reg. \$27

\$20.99

*Based on a consumer perception study of 33 people.

Cleanse + Hydrate

For Dry Skin
With Hyaluronic
Acid & Niacinamide

**Beyond Glow
Hyaluronic Acid +
Niacinamide
Facial Cleanser**
150 ml 627-821
reg. \$22
\$17.49



Cleanse + Brighten

For Normal Skin
With Vitamin C
& AHA

**Beyond Glow
Vitamin C + AHA
Facial Cleanser**
150 ml 628-450
reg. \$22
NOW \$15.49



Cleanse + Exfoliate

For Oily Skin
With Salicylic
& Citric Acids

**Beyond Glow
Salicylic +
Citric Acids
Facial Cleanser**
150 ml 627-798
reg. \$22
NOW \$15.49



in one use

relieves the look of redness caused by dryness[†]

Beyond Glow Centella Redness Relief Serum

Suitable for sensitive skin. A gel serum with centella asiatica, panthenol and glycerin. 30 ml
350-399
reg. \$48
\$35.99

Best of
K-Beauty



BEFORE*



AFTER

*Subject's face exposed to heat for 20 minutes to induce skin irritation.

†Based on a consumer perception study of 32 people.

**Based on a consumer perception study of 31 people.

††Based on a clinical study of 32 people.

BEYOND GLOW CENTELLA COLLECTION

SKIN CARE



96%
said skin
feels
instantly
cooled**

Beyond Glow Centella Cooling Toner
Suitable for sensitive skin. Refreshes and moisturizes in seconds. 200 ml
350-403
reg. \$35
\$27.99

in 6 days
skin barrier improved^{††}

Beyond Glow Centella Soothing Cream
Suitable for sensitive skin. Moisturizes and reduces the look of dryness. 80 ml
350-422
reg. \$48
\$35.99



Beyond Glow Niacinamide 2% Cream Mist

Deliver an instant boost of hydration to your skin with this creamy, fast absorbing spray-on serum that can be used under or over makeup for glowing skin anytime, anywhere. Infused with niacinamide. 100 ml

617-365

reg. \$48

\$36.99



Beyond Glow Niacinamide 10% Firming Cream

Hydrating neck and chest cream formulated with tried and true ingredients niacinamide, shea butter and squalane derived from olive oil, plus panthenol, which helps support the skin barrier. 100 ml

052-249

reg. \$55

\$42.99



Beyond Glow Niacinamide 10% Eye Cream

Moisturizing eye cream formulated with tried and true ingredients niacinamide and caffeine, plus panthenol, which helps support the skin barrier. 30 ml

052-272

reg. \$43

\$32.99



In just 4 weeks:

Beyond Glow Niacinamide 10% Firming Cream

- Crepey skin appears smoothed*
- Neck and décolleté lines look improved*

*Based on a clinical study on 31 people.

Beyond Glow Niacinamide 10% Eye Cream

- Crow's feet appear reduced†
- Helps under-eye bags look depuffed†

†Based on a clinical study on 30 people.

Minimize the look of PORES



serum + cream
together

3X

Reduction in the
look of pores**

Beyond Glow Niacinamide 10% + Panthenol Serum

Helps improve the look of tone and elasticity. Niacinamide, also known as vitamin B3, helps even the look of skin tone and supports the skin barrier. Panthenol, also known as provitamin B5, helps lock in moisture. 30 ml / 1 fl. oz. U.S.

\$42.99

Beyond Glow Niacinamide 10% All-in-One Cream

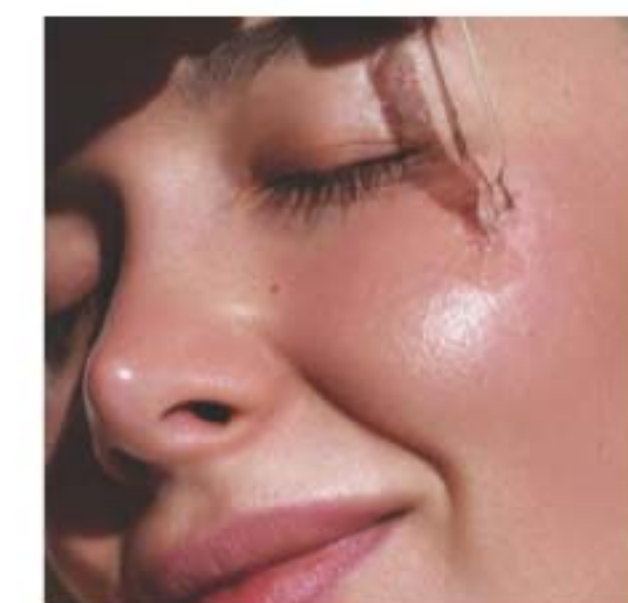
Facial cream that helps enhance your healthy-looking glow. All-in-one facial cream helps brighten the look of skin, reduces the appearance of fine lines and helps support the skin barrier. 110 ml / 3.7 fl. oz. U.S.

\$42.99

Serum + cream, when used together:
Reduce the look of pores by

44%^{††}

^{††}Vs. using the serum alone, based on a clinical study. [†]In a 4-week clinical trial of 32 people.





Beyond Glow
Hyaluronic Acid 1.5% + Ferulic Acid Serum

Hyaluronic acid, known as a "moisture magnet," helps infuse skin with instant and lasting hydration. Ferulic acid, a powerful antioxidant, helps support skin against environmental stressors. 30 ml **255-593** reg. \$55

NOW \$31.99



Beyond Glow
Vitamin C 6% + Ferulic Acid Serum

Vitamin C helps improve the appearance of radiance for a glowing look. Ferulic acid, a powerful antioxidant, helps support skin against environmental stressors. 30 ml **255-589** reg. \$55

\$42.99

Clinically tested to improve skin radiance in 3 days

Q

What makes Beyond Glow Vitamin C Serum so special?

A



125-hour antioxidant effect*



4X stronger skin barrier in 2 weeks†

Just look at the **antioxidant effect!**
of Beyond Glow Vitamin C 6% + Ferulic Acid Serum

With
Beyond
Glow
Serum



Without
Beyond
Glow
Serum



Boosts absorption of vitamin C by 2X**

Use with
Vitamin C
6% + Ferulic
Acid Serum
for optimal
results.

Beyond Glow
Galvanic Booster Device

Give your skin spa pampering at home in 3 minutes. Red LED light helps tone the appearance of skin texture, enhances your radiant glow and helps promote a healthy look. On-the-go compact design. Automatically turns on and off. Requires 2 cell batteries. **255-627** reg. \$85

\$69.99

*Evaluated by in vitro test. †Based on stripped skin instrumental study on 31 people. **Evaluated by Dongduk Women's University Industry-Academia Cooperation [ex vivo test, DPPH, Oct. 13 to 24, 2023].

The Trending Star Ingredient: SNAIL MUCIN Complex

Clinically tested to
improve skin tone
and brightness

**Beyond Glow Snail Mucin Complex
+ Panthenol Cream**

Moisturizes while improving the appearance of texture and elasticity. With snail mucin complex and panthenol, which helps lock in moisture. 110 ml

255-536

reg. \$52

\$40.99

**Beyond Glow Snail Mucin Complex
+ Niacinamide Serum**

Moisturizes, brightens and retexturizes the look of skin. With snail mucin complex and niacinamide, also known as vitamin B3, which helps even the look of skin tone and supports the skin barrier. 100 ml **255-574**

reg. \$52

\$40.99

Our cream and serum, formulated with snail mucin complex, moisturize and help brighten the appearance of skin with a clear, cushiony yet fast-absorbing texture that disappears into the skin while plumping its look with hydration.



Real Formulas, Real Results



"I'M GETTING SO MANY COMPLIMENTS ON MY BARE SKIN.
I ALMOST DON'T WANT TO EVEN WEAR MAKEUP!"

"BEYOND GLOW IS A GAME CHANGER.
I HAVE SEEN A SIGNIFICANT IMPROVEMENT IN MY SKIN."

The Ambassadors were gifted with the Beyond Glow Snail Mucin Cream, plus the 4 serums from the Beyond Glow regimen, which they used with the Galvanic Booster Device, AM and PM, for 2 weeks.

see firmer
looking skin
in the eye area



**Isa Knox Anew Clinical
Collagen Booster
Eye Lift Pro
Dual Eye System**
Helps eye area look lifted, firmer, tighter.
With a peptide complex. Gel, 10 ml;
cream, 10 ml. **564-550**
reg. \$56
\$34.99

COLLAGEN BOOSTER COLLECTION

Formulated with **peptides**,
exfoliators and **amino
acids** to help skin look
firmer and **smoother**.

**Isa Knox Anew Clinical
Collagen Booster
Firming Cream**
With peptides to help
restore a more youthful
looking appearance, and
moisturizing niacinamide
and squalane. Hygienic,
airless pump. 50 ml
069-327
reg. \$65
\$42.99



**Isa Knox Anew Clinical
Collagen Booster Rejuvenating Serum Ampoules**
Powerful peptide blend. 60 capsulated single-use
ampoules. 0.22 ml each. **803-077**
reg. \$92
\$76.99



**Isa Knox Anew Clinical
Collagen Booster Microneedling Polisher**
At-home alternative to microdermabrasion
and microneedling. Diminishes the look of pores,
fine lines and wrinkles. 50 ml **798-592**
reg. \$48
\$29.99

See improvement in the
look of wrinkles...and it
moisturizes too.



**Isa Knox Anew Clinical
Revitalize & Reveal
Advanced Wrinkle Corrector**
Wrinkles appear reduced.
50 ml **470-100**
reg. \$56
NOW \$31.49



*In 6 out of
8 attributes
tested over a
7-week period.

**Isa Knox Anew Clinical
Revitalize & Reveal
Extra Strength Retexturizing Peel**
Results similar to a 35% pro glycolic peel.*
30 fragrance-free pads, 5 cm diam. **632-774**
reg. \$56
NOW \$31.49



**Isa Knox Anew Clinical
Revitalize & Reveal
Resurfacing Expert Smoothing Fluid**
Like a pro microdermabrasion but without the
same irritation. 30 ml **852-282**
reg. \$62
\$44.99



**Isa Knox Anew Clinical
Line Eraser with Retinol Targeted Treatment**
For targeted lines and wrinkles such as around
forehead and mouth. Use PM. 20 ml **925-159**
reg. \$56
\$41.99

get more
youthful
looking skin

Reduce the look
of wrinkles
with retinol.



**Isa Knox
Anew Clinical
Revitalize & Reveal
Resurfacing Lotion for Body**
Exfoliates with gentle yet
effective AHA lactic acid.
Moisturizes with shea butter.
150 ml **390-785**
reg. \$48
NOW \$22.49



**Isa Knox Anew Clinical Line Eraser with
Retinol [1.0%] Advanced Retinol Serum**
Our highest concentration of retinol. Reduces the
appearance of fine lines, wrinkles and dark spots.
Use PM. 30 ml **390-751**
reg. \$72
NOW \$43.49



**Isa Knox Anew Clinical
Line Eraser with Retinol Treatment**
For overall fine lines and wrinkles.
Great for first-time retinol users. Use AM/PM. 30 ml
763-330
reg. \$63
NOW \$33.49



Anew Ultimate Supreme Radiant Firming Cream

A lightweight moisturizer, perfect for daytime use. With panthenol, niacinamide and peptides to help boost hydration, and restore the look of brightness and firm skin contours. With bakuchiol, an alternative to retinol to reduce the appearance of wrinkles and discolourations without irritation. Clinically tested to improve the look of skin texture and elasticity. 50 ml

835-052

reg. \$85

\$57.99



Anew Ultimate Multi-Performance Eye System

Reduces the look of crow's feet and helps de-puff the appearance of under-eye bags.

Cream, 15 g; elixir, 2.5 g. 021-862

reg. \$59

\$41.99



Anew Ultimate Night Repair Serum

See improvement in the look of tone and texture.

With peptides, licorice, hyaluronic acid and niacinamide. Use PM before moisturizer. 30 ml

625-355 reg. \$63

NOW \$31.99



Anew Ultimate Supreme Eye Balm

Moisturizing formula infused with squalane, sunflower seed oil and antioxidant vitamin E. Wear alone or under makeup. 2.9 g

625-340

reg. \$63

\$42.99



Anew Ultimate Multi-Performance Night Cream

It works while you sleep to revive and recreate the look of youthful skin. 50 g

763-311

reg. \$59

\$41.99



Anew Ultimate Supreme Dual Elixir

Black Pearl Extract combined with precious oils. See a dramatic difference in the appearance of even advanced signs of aging. Serum/oil, 20 ml each.

963-925 reg. \$84

\$57.99



Anew Ultimate Supreme Advanced Performance Crème

With Black Pearl Extract. See a dramatic difference in the appearance of deep wrinkles and skin radiance. 50 g

014-735

reg. \$84

NOW \$43.49



Anew Ultimate Multi-Performance Day Cream Broad Spectrum SPF 25

See the look of wrinkles appear reduced and the look of youthful vibrance return. 50 g

659-769

reg. \$59

\$41.99

defying gravity
has never been easier



Anew Platinum Firm and Sculpt Cream for Neck and Chest

With Peptide Lifting Complex to target the skin on your neck and chest, which is more vulnerable to wrinkles and sagging. Use PM after cleansing. 50 g **763-584** reg. \$59

\$41.99

Anew Platinum Night Cream

Skin appears smoother overnight and looks resculpted over time. 50 g **753-439** reg. \$59

\$41.99

Anew Platinum Eye & Lip Cream

Smooths the appearance of the area around eyes and lips. Dual applicator. 15 g **902-614** reg. \$59

\$41.99

Anew Platinum Day Cream Broad Spectrum SPF 25

Reduces the appearance of wrinkles for a more youthful complexion while sagging skin feels lifted. 50 g **659-439** reg. \$59

\$41.99



Anew Platinum Age Delay Serum

With niacinamide, panthenol and peptide. Formulated to enhance the look of elasticity for a firmer appearance. Use AM and PM before moisturizer. 30 ml **625-609** reg. \$63

\$42.99



Anew Platinum Sculpting Sleep Mask

An overnight mask that helps lift and plump the look of skin while providing hydration while you sleep. Formulated with skin-loving ingredients, including peptides, panthenol and niacinamide. Clinically tested to improve the look of skin texture and wrinkles in two weeks. 50 ml **835-033** reg. \$60

\$41.99



Anew Platinum Sculpting Body Serum

With moisture-boosting niacinamide, panthenol (pro-vitamin B5) and peptides. 200 ml **506-249** reg. \$63

\$42.99





Cleanse while getting
a burst of hydration

belif Aqua Bomb Jelly Cleanser

A gentle jelly-to-foam cleanser with amino acids and glycerin-based cleansing agents. 160 ml **445-353**

\$40.50



Rejuvenate dull, fatigued skin by
locking in hydration all night long

belif Aqua Bomb Sleeping Mask

Jelly pudding textured face mask replenishes with quick absorbing hydration for a complexion that looks radiant and glowing. 75 ml **514-717**

reg. \$59
\$51.50



**Anew Hydra Fusion
De-Puffing
Eye Serum**

Eyes look and feel refreshed. With caffeine and hyaluronic acid. Boosts hydration around eye area by 3X. 15 ml **137-737**

reg. \$48
NOW \$24.49

**Anew Hydra Fusion
1.5% Hyaluronic
Acid Serum**

With 3 different molecular sizes of HA that reach multiple layers of skin's surface to help plump the look of skin. 30 ml **290-390**

reg. \$62
NOW \$27.49

**Anew Hydra Fusion
Cleansing Micellar
Water**

No need to rinse off. 300 ml **139-380**

reg. \$21
\$13.99

**Anew Hydra Fusion
Nighttime Facial
Treatment**

Hyaluronic acid plus shea butter beads. Relaxing rose scent. 50 ml **139-429**

reg. \$48
NOW \$24.49

**Anew Hydra Fusion
Gel Cream**

Lasting hydration. Helps skin appear smoother. 50 g **266-893**

reg. \$48
NOW \$24.49



NORMAL TO DRY SKIN
Isa Knox LXNEW Clean
Nourishing Cream Cleanser
 Removes impurities and makeup while
 restoring moisture. 150 ml **717-990**
 reg. \$21
\$16.99



NORMAL, DRY AND COMBINATION SKIN
Isa Knox LXNEW Clean
Balancing Gel Cleanser
 Gel to foam. Helps remove oil and impurities.
 150 ml **718-010**
 reg. \$21
\$16.99



OILY TO NORMAL SKIN
Isa Knox LXNEW Clean
Soothing Whipped Oil Cleanser
 Helps eliminate impurities and excess oil.
 150 ml **718-025**
 reg. \$27.50
\$20.99

Avon Solutions Banishing Serum
 An intensive serum with ingredients
 known to help improve the appearance
 of dark spots and the look of uneven
 skin tone. 30 ml **507-905** reg. \$25
\$19.99



Avon Solutions
Dramatic Firming Serum
 This moisturizing serum contains
 effective anti-aging ingredients
 that help promote a more youthful
 appearance. 30 ml **507-871**
 reg. \$25
\$19.99



Avon Solutions Nurtura Serum
 With nourishing ingredients known
 to help combat dryness and flakiness,
 and help hydrate. 30 ml **507-924**
 reg. \$25
\$19.99



Avon Solutions
Dramatic Firming
Cream
 Skin looks
 and feels smoother.
 50 ml
374-657
 reg. \$21
\$15.99



Avon Solutions
Nurtura
Replenishing
Cream
 Adds moisture
 to dry skin. 50 ml
908-263
 reg. \$21
\$15.99



Avon Solutions
Banishing Cream
Skin Discoloration
Improver
 Helps improve the
 look of skin tone.
 50 ml
267-115
 reg. \$21
\$15.99



Avon Solutions
Anti-Aging Cream
 Moisturizing formula
 helps to smooth the
 appearance of fine
 lines and wrinkles.
 50 ml
949-460
 reg. \$21
\$15.99

Best of
K-Beauty



**Rice Water Bright
Facial Massage
Cream**

With rice water, vitamins A, B and E, ceramide and minerals. After cleansing, massage into skin 2-3 times a week. 200 ml **450-200** reg. \$35
\$27.99

**Rice Water Bright
Foaming Cleanser**

Light whipped foam. With rice water and soapwort extract. Helps skin look clearer and brighter. 300 ml **508-093** reg. \$27
\$20.99

**Rice Water Bright
Rice Bran
Gentle Exfoliating
Cleanser**

Daily scrub with organic rice bran powder, rice bran oil and hydrated silica. 300 ml **376-865** reg. \$27
\$20.99

**Rice Water Bright
Cleansing Facial
Wipes**

Great on the go. With rice extract to moisturize while cleansing. Removes eye makeup. 50 wipes. **508-108** reg. \$18
\$13.99



**Smaller Size!
Rice Water Bright
Foaming Cleanser**
Light whipped foam. With rice water and soapwort extract. Convenient size for your bathroom cabinet. 150 ml **478-479** reg. \$18
\$13.99



**Rice Water Bright
Mild Cleansing
Water**
Removes impurities via the micellar method, so no need to rinse off! 500 ml **288-360** reg. \$25
\$19.99



**Rice Water Bright
Facial Cleansing
Lotion**
Helps brighten the appearance of skin. Gently removes makeup and impurities. 200 ml **720-184** reg. \$20
\$15.99

**Rice Water Bright
Light Facial Cleansing Oil**
With jojoba oil and rice water extract, known to moisturize and help brighten the look of skin. 150 ml **720-199** reg. \$28
\$21.99



MAKEUP

Discover makeup that lets
the real you shine through.
Try before you buy with our
virtual makeover tool at
avon.ca/category/makeup.



FREE fmg SET & FIX SPRAY
WITH ANY TWO FMG MATCH OR CASHMERE FACE MAKEUP
PURCHASES, PAGES 38-43
\$22 VALUE Limited quantities. Sold separately on page 59.

way to glow

Silky, liquid pearl formula with a soft filter effect and hint of tint in sheer, flexible shades.

fmg Match Airbrush Retouch Tinted Primer

Helps even the look of skin tone and provides a lit from within dewy complexion. With skin-loving ferulic acid, panthenol (provitamin B5) and niacinamide. Formulated without parabens, phthalates, fragrance and talc. 30 ml reg. \$30

\$23.99



FREE

fmg SET & FIX SPRAY
Details page 37.



Featured shade:
fmg Match Tint Radiant Tinted
Moisturizer in Medium Deep.

fmg Match Tint Radiant Tinted Moisturizer

Brightens the look of skin tone, boosts moisture and blurs the appearance of flaws. With passion fruit, chia and sunflower seed oils, vitamin E and pro-vitamin B5. Buildable coverage. Radiant finish. Formulated without parabens. 30 ml reg. \$33

\$25.99

FULL RANGE OF FLEXIBLE SHADES





fmg Match Wand Correcting Stick
Neutralizes unevenness, brightens and colour corrects. Long-wearing formula with shea butter and vitamin E. Formulated without parabens, phthalates and sulfates. 6 g reg. \$28
\$20.99



Gelato:
brightens
dullness
726-785



Sherbet:
helps the look
of unevenness
726-790



Pistachio:
neutralizes
redness
726-770



fmg Match Filter Serum Tint Foundation
Instantly hydrates, blurs and evens tone. With hyaluronic acid, vitamin E and berry complex. Buildable coverage. Demi-matte finish. Formulated without talc, parabens and fragrance. 9 g reg. \$30
\$23.99



Fair
932-491



Fair Light
932-620



Light
932-640



Light Medium
932-654



Soft Medium
932-783



Medium
932-836



Medium Deep
933-153



Deep
933-172



fmg Match Prime Face Perfector
Flaw-blurring mattifying oil-free formula minimizes the look of pores and fine lines. Sheer coverage. Matte finish. Formulated without parabens. 30 ml 103-744 reg. \$28
\$20.99



powder power

New & improved talc-free formulas.

fmg Match Dust Finishing Powder
Loose powder helps to set makeup. Translucent formula with light-diffusing ingredients known to help blur the appearance of imperfections and silica to help with excess shine. Goes on smooth and provides a radiant finish. Sheer to light coverage. Formulated without parabens, phthalates, sulfates, fragrance and talc. Vegan. 4.5 g reg. \$29
\$22.99



Translucent Fair-Light
921-058

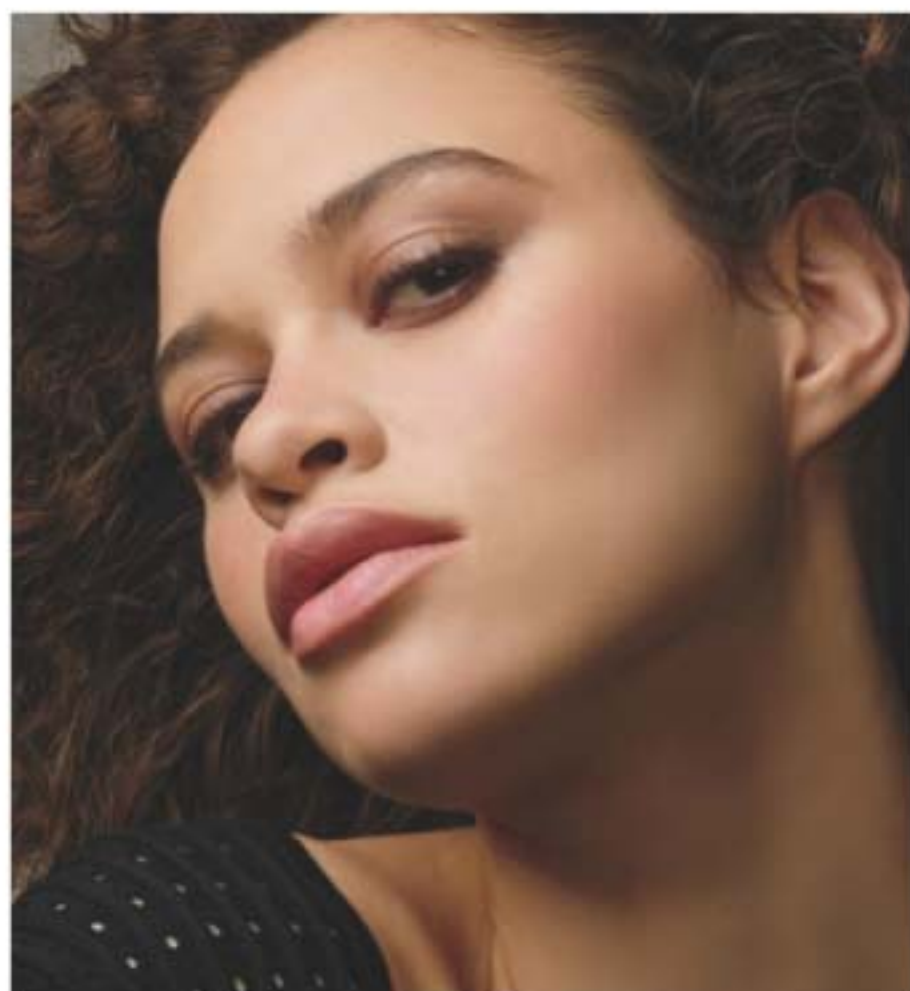


Translucent Medium-Deep
921-062

fmg Match Set Finishing Powder
Loose powder blends effortlessly, creating an invisible veil that sets makeup for lasting wear. Translucent formula infused with light-diffusing ingredients known to help blur the appearance of imperfections and silica to help with excess shine. Goes on smooth and provides a soft matte finish. Formulated without parabens, phthalates, sulfates, fragrance and talc. Vegan. 4.5 g
Invisible 750-975
reg. \$29
\$22.99



FREE
fmg SET & FIX SPRAY
Details page 37.



fmg Cashmere 24 Hour Foundation*

Up to 24 hours of comfortable, breathable wear. Full, flexible coverage. Soft-focus matte finish. Helps blur the appearance of pores and fine lines for a smoother looking complexion. Water-resistant. Formulated without parabens, phthalates and sulfates. 30 ml
reg. \$45

\$34.99



fmg Cashmere Cream Concealer

Long-wearing formula helps to camouflage dark circles and uneven skin tone. With hyaluronic acid and collagen. Full coverage. Matte finish. Formulated without parabens, phthalates, talc and fragrance. 6 g
reg. \$23

\$17.99



fmg Cashmere Compact Powder Foundation*

Targets shine. Can be used wet or dry. Buildable medium to full coverage. Matte finish. With antioxidant botanicals. Formulated without parabens, phthalates and sulfates. 11.5 g
reg. \$52

\$44.99



fmg Cashmere Under Eye Primer

Helps diminish the look of dark circles and fine lines. With caffeine, green tea extract and vegan alternative to collagen. Formulated without parabens, phthalates and fragrance. 9 g
010-429
reg. \$35

\$26.99



fmg Cashmere Multi-Peptide Face Primer

Revitalizing ingredients help to smooth the appearance of fine lines and pores. Sheer gel formula with Matrixyl 3000 peptide blend, hyaluronic acid, collagen and niacinamide. Formulated without parabens, talc and fragrance. 30 ml
739-284
reg. \$35

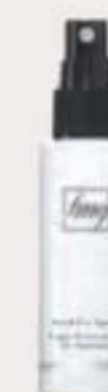
\$27.99



fmg Cashmere Multi-Peptide Eyeshadow Primer

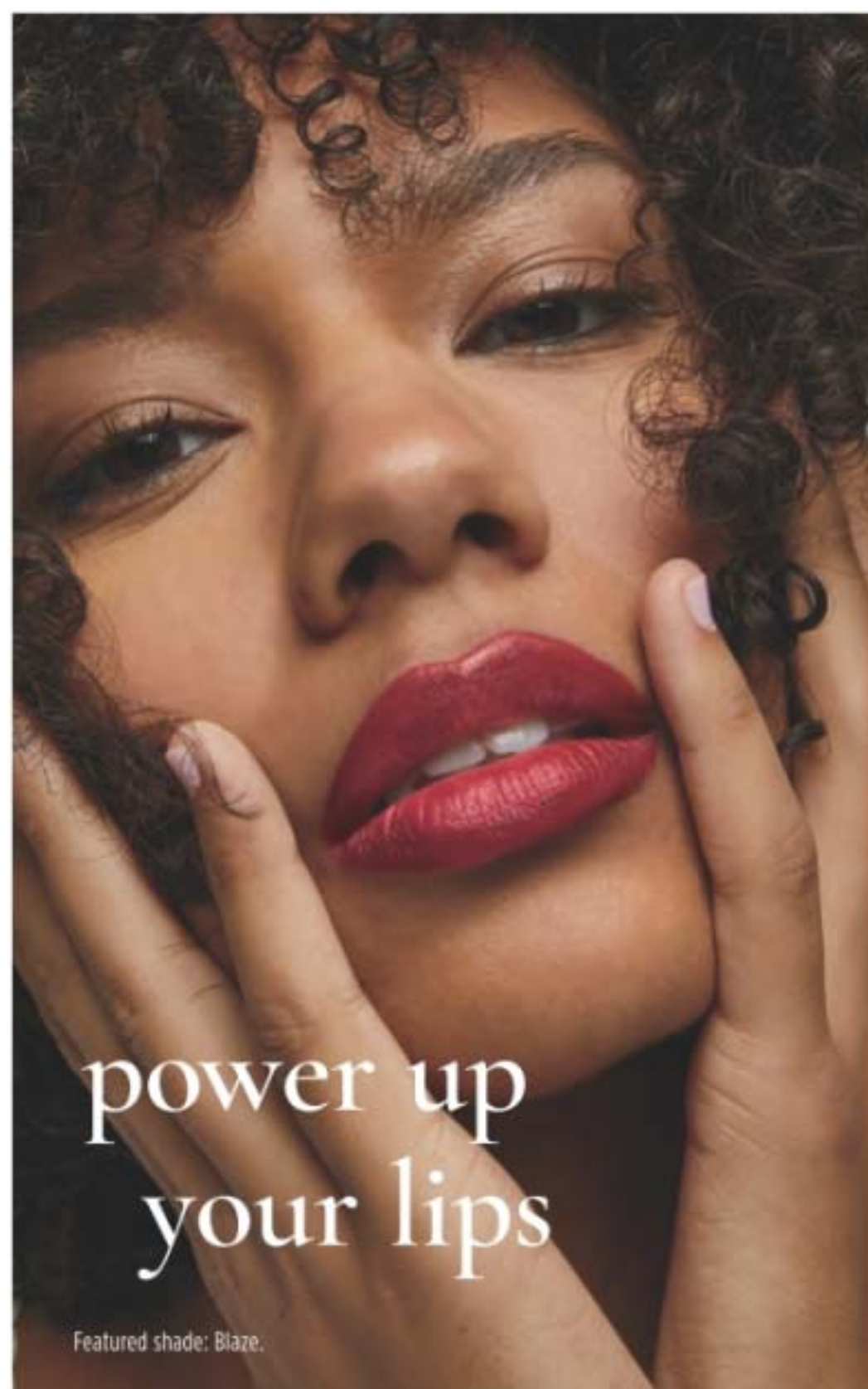
Keeps eyeshadow in place and intensifies the colour. Skin-loving sheer formula with Matrixyl 3000 peptide blend, hyaluronic acid, collagen and panthenol. Formulated without parabens and talc. 9 g
906-385
reg. \$35

\$26.99



FREE

fmg SET & FIX SPRAY
Details page 37.



power up
your lips

Featured shade: Blaze.



MATTE

- | | | | | | |
|------------------|-------------------------|-------------------|------------------------|-----------------------|-----------------------|
| | | | | | |
| Chili
171-355 | Sunset Mauve
171-360 | Willow
171-450 | Wild Orchid
171-431 | Terra Nova
171-340 | Garnet Sky
171-393 |



fmg Glimmer Lipstick
Lightweight formula with pomegranate extract. Buildable coverage. Available in **Matte**, **Satin** or **Shimmer** finishes. Formulated without parabens and sulfates. 3 g reg. \$22

\$16.99

SATIN

- | | | |
|--------------------------|------------------------|--------------------------|
| | | |
| Blaze
896-880 | Wild Cherry
449-708 | Hibiscus
898-021 |
| | | |
| Poppy
897-651 | Aster
448-769 | Desert Moon
449-803 |
| | | |
| Twilight
449-822 | Cyclone
890-566 | Sierra Sunset
890-805 |
| | | |
| Plum Blossom
449-765 | Dahlia
726-350 | Rose Angel
897-939 |
| | | |
| Wildflower
898-040 | Eclipse
448-740 | Tulip
449-712 |
| | | |
| Wildrose
898-533 | Stellar
726-550 | Honeyflower
726-531 |
| | | |
| Morning Glory
449-750 | Equinox
449-818 | Luna
895-170 |

SHIMMER

- | | |
|-------------------|--------------------------|
| | |
| Aurora
726-584 | Constellation
449-731 |

MATTITUDE IS BACK

NEW & IMPROVED TRANSFER-RESISTANT FORMULA

fmg Glimmer Mattitude Liquid Lipstick

Lock in vivid, saturated colour with a comfortable, non-drying formula that wears all day without fading or feathering. With vitamin E and a blend of olive and sunflower oils to help smooth and soften lips. Glides on effortlessly, delivering full coverage in one swipe with a velvety soft matte finish. Formulated without parabens, sulfates and phthalates. Vegan. 3.5 ml reg. \$25

\$19.99

- | | | | | | | |
|-----------------------|-------------------|----------------------|---------------------|----------------------|-----------------------|--------------------|
| | | | | | | |
| Relentless
418-752 | Driven
419-050 | Tenacious
419-232 | Resolute
419-228 | Ambitious
419-266 | Persistent
418-771 | Devoted
418-896 |



Best of
K-Beauty



**MAXIMUM IMPACT.
minimal effort.**




GO. by Glimmer

Whipped Lip & Cheek Tint

Ultimate multitasker delivers beautiful colour for lips and cheeks. With apple fruit extract, an antioxidant known to help support glowing and smooth looking skin. Full pigmented coverage with a velvety matte powder finish. Formulated without parabens, talc, sulfates, phthalates and mineral oil. 4.2 g reg. \$26

\$19.99

		
Velvet Vanilla 922-293	Cherry Cocktail 922-289	
<hr/>		
		
Peony 749-865	Hibiscus Tea 750-019	Jam 749-850
		
Flora 749-956	Frozen Pink 749-994	Blushed 749-870

GO. by Glimmer Lacquered Lip Gel

Ultimate fusion of shiny gloss and tinted lip colour in one. Non-sticky formula with gel-like texture glides on and helps to leave lips feeling soft and cushioned. Infused with a Super-Fruit Extract Complex that includes noni, passionflower and amla extract. Buildable coverage with a glossy finish. Formulated without parabens, talc, sulfates, phthalates and mineral oil. 4 g reg. \$25

\$18.99

		
Soft 922-327	Fruity Floral 922-312	
<hr/>		
		
Whisper Pink 750-114	Sunset Rose 750-205	Waffle Cone 750-023
		
Orchid Bloom 750-320	Seeing Red 750-391	Currant Crush 750-478



show your lips some LOVE

Our bestselling LOVE Lip Butter now with more colour, more shine and more moisture!



Featured shade: Girlfriend.

NEW

fmg LOVE Lip Butter Crème

Ultra-creamy yet weightless formula, infused with a blend of jojoba, sweet almond, apricot, olive and evening primrose oils, mango extract and shea butter, melts onto lips and drenches them in luscious moisture, leaving them feeling buttery soft with a kiss of glossy colour. Click pen applicator. Vanilla scented. Formulated without parabens, gluten, talc, sulfates and phthalates. 3 g reg. \$28

\$20.99



fmg LOVE Lip Butter

Sheer, high-shine formula with cupuaçu seed butter, mango extract, and apricot kernel and olive fruit oils. Buildable coverage. Formulated without parabens, sulfates and phthalates. 2.7 g reg. \$28

\$20.99



fmg Glimmer Birthday Balm Lip Crayon

Sheer, soft shine formula with non-GMO shea butter. Formulated without parabens and gluten. 2.7 g reg. \$25

\$17.99



fmg Glimmer Lip Conditioner

Leaves dry, cracked lips feeling soft and smooth. With mango seed butter, vitamin E, and jojoba and sunflower seed oils. Formulated without parabens, sulfates, phthalates and talc. 3.5 g 794-578 reg. \$18

\$13.99



fmg Glimmer Be Blushed Cheek Color

Creamy formula with vitamin E. Buildable coverage. Dewy finish. Formulated without parabens, phthalates and fragrance. 4 g reg. \$25

\$17.99



fmg Glimmer Powder Blush

Weightless formula with ultrafine pearl and vitamin E. Buildable coverage. Matte finish. Formulated without parabens, phthalates and fragrance. 8 g reg. \$22

\$16.99



fmg Glimmer Powder Illuminator

Lightweight buildable formula with vitamin E. Radiant finish. Formulated without parabens, phthalates and fragrance. 10 g reg. \$22

\$16.99



fmg Glimmer Lip & Cheek Stain

Highly pigmented long-wearing gel formula. Brush-tip applicator. Transfer-proof. Formulated without parabens and fragrance. 5.5 ml reg. \$24

\$18.99



fmg Colors of LOVE Glow Balm Duo Illuminating Stick

Sheer formula with blend of pomegranate extract, mango and shea butter, vitamins E and C, and avocado oil. Soft, pearlescent finish. Formulated without parabens, phthalates and fragrance. 8 g 924-573 reg. \$32

\$24.99



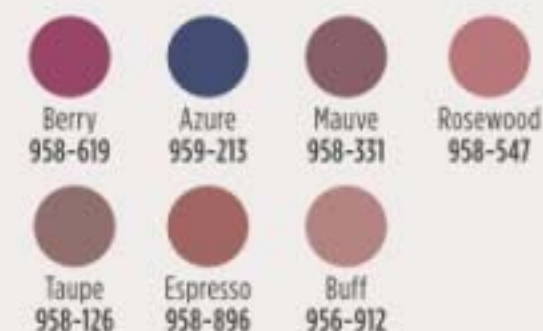
all eyes on you



fmg LOVE at 1st Sight Eyeshadow Palette
 Nine buildable matte and shimmer shades create depth and dimension. Versatile formula with antioxidant vitamin E blends seamlessly. Formulated without parabens, phthalates, talc and fragrance. 6.48 g **786-076**
 reg. \$37
\$28

fmg CathyCat Shadow Gaze Matte Color Stick
 Long-wearing formula will not budge or smudge. Buildable and blendable coverage. Matte finish. Formulated without parabens and fragrance. 1.35 g
 reg. \$27

\$20.99 \$14.99



fmg CathyCat Nine Lives Precision Liquid Eyeliner
 Slim-tip brush delivers a precise line of water- and sweat-resistant colour that will not skip, tug or smudge. Formulated without parabens, sulfates, phthalates and talc. 2 ml
Blackest Black 800-829
 reg. \$26

\$19.99 \$14.99



fmg Glimmer Liquid Eyeshadow
 Silky cream formula glides on effortlessly for a soft subtle sheen that lasts all day. Water resistant. Will not smudge or crease. No messy fallout. Buildable coverage. Formulated without parabens, phthalates and sulfates. 2 ml
 reg. \$20

\$15.99 \$11.99



fmg Glimmer Eyeshadow Quad
 Soft powder formula lasts all day. No messy fallout. Buildable coverage. Formulated without parabens and fragrance. 6 g
 reg. \$26

\$22.99 \$16.99



For Multi Quad finishes, visit avon.ca

GET AN EXTRA 25% OFF Final prices as shown.

fmg Glimmer Eyeliner

Long wearing. Retractable. Formulated without parabens, sulfates and talc. 0.28 g reg. \$13

\$6.49

LIP LINERS

					
Honey Peach 327-721	Lava Red 327-740	Passion Red 327-650	Red Brick 330-451	Pink Bouquet 330-356	Merlot 330-284
					
Chocolate 330-667	Simply Spice 330-614	Mystery Mauve 330-538	Candy Apple 327-903	Perfect Plum 330-887	Au Naturel 330-318

EYELINERS

					
CREAM Emerald Green 334-332	CREAM Starry Night 334-347	CREAM Saturn Grey 334-328	CREAM Majestic Plum 334-313	CREAM Cosmic Brown 334-351	CREAM Blackest Black 334-366
					
DIAMOND Sterling 331-960	DIAMOND Teal Sparkle 331-606	DIAMOND Olive 331-940	DIAMOND Twilight Sparkle 331-553	DIAMOND Sugar Plum 331-625	DIAMOND Purple Rain 332-071
					
DIAMOND Smoky Diamond 331-280	DIAMOND Brown Sugar 331-568	DIAMOND Black Ice 331-610	WATERPROOF Blue Skies 334-237	WATERPROOF Raisin 332-200	WATERPROOF Brown Chocolate 332-124
					
WATERPROOF Seafoam Green 334-241	WATERPROOF Smoky Grey 332-162	WATERPROOF Blackest Night 229-491	WATERPROOF Midnight Blue 332-158		

BROW DEFINERS

					
Light Blonde 331-109	Blonde 331-113	Tawny 331-128	Light Brown 331-151	Dark Brown 331-147	Brunette 331-242

fmg Glimmer Liquid Color Eyeliner Pen

Felt tip applicator glides on smoothly and provides precise application. Highly pigmented, lightweight formula is smudge/transfer/sweat-proof.* Formulated without parabens, talc, mineral oil, phthalates and fragrance. 1.2 ml reg. \$19

\$15.99

			
Chestnut 519-503	Indigo 519-499	Forest 519-518	Smoked 519-537

*Based on Consumer Home Use Test Study of 62 applicants.

fmg Glimmer Liquid Eyeliner

Quick drying, long lasting formula. Transfer/sweat/water-proof. Matte finish. Formulated without parabens, phthalates and fragrance. 1.1 ml **Blackest Black** 354-380 reg. \$18

\$15.99

fmg Glimmer Always On Point Eyeliner

Built-in sharpener. Smudge/water-proof. Formulated without parabens, sulfates and talc. 0.25 g **Black** 016-389 reg. \$15

\$11.99

MICRO TIP

creates realistic hair-like strokes

MATTE FINISH

buildable, long wearing, creamy yet firm formula



fmg Glimmer Fine Line Brow Pencil

Sweat/smudge-proof, yet easy to remove.** Retractable. Vegan. Formulated without parabens, talc, sulfates, fragrance and mineral oil. 4.1 g reg. \$14

\$10.99

			
Blonde 888-206	Soft Medium 888-230	Medium 888-278	Dark 888-282

**Based on Consumer HUT Study of 22 applicants.

SPOOLIE

blends and grooms for a natural look



**fmg Colors of LOVE
Hi-Brow Tinted Brow Gel**
24-hour water-resistant formula with heart-shaped fibres, clay and vitamin E. Won't clump, smudge or flake. Matte finish. Formulated without parabens, phthalates and fragrance. 3.3 ml reg. \$28

\$20.99



**fmg Cashmere
Eyelash Primer**
With biotin and collagen amino acids to help keep lashes looking healthy and strong. Maximizes the performance of any mascara for gorgeous, lush lashes. Formulated without parabens, sulfates and talc. 10.5 ml **324-369** reg. \$35
\$26.99



**fmg Cashmere
Ultimate Volume Mascara**
Volumizing with biotin and a vegan alternative to collagen to help keep lashes looking healthy and strong. Glossy black finish. Formulated without parabens, sulfates and talc. 8 ml **Rich Black 153-736** reg. \$35
\$26.99



**fmg Colors of LOVE
Hi-Brow Sculpting Brow Gel**
Clear formula with aloe and hyaluronic acid. Flake-proof. Matte finish. Formulated without parabens, phthalates and fragrance. 3.3 ml **536-695** reg. \$28
\$20.99



**fmg Glimmer SuperShock
Volumizing Mascara**
Lash-building formula with plumping fibres. High-gloss finish. Won't clump, smudge or flake. Formulated without phthalates and fragrance. 10 ml **Black 698-829** reg. \$25
\$15.99



**fmg LOVE at 1st Lash
Waterproof Mascara**
Lash-loving, waterproof formula with volumizing and lengthening fibres. With Lashrez, olive oil and vitamin E. Won't clump, smudge or flake. Formulated without parabens and sulfates. 8.5 ml **Blackest Black 480-953** reg. \$28
\$20.99



**fmg LOVE at 1st Lash
Mascara**
Lash-loving volumizing and lengthening fibres. With lycopene, olive oil and vitamin E. Won't clump, smudge or flake. Formulated without parabens and sulfates. 9 ml **Blackest Black 698-670** reg. \$28
\$20.99



**fmg Glimmer SuperExtend
Nourishing Mascara**
Long-wearing lengthening formula with vitamin E, argan and coconut oils. Won't clump, smudge or flake. Formulated without sulfates and talc. 7 ml **Black 698-848** **Brown Black 698-852** reg. \$25
\$15.99



**fmg Glimmer Wash-Off
Waterproof Mascara**
Waterproof volume. Washes off easily with soap and water. Formulated without phthalates and fragrance. 6 g **Black 535-560** reg. \$25
\$15.99



out of this world nails

fmg Glimmer Nail Lacquer

Nail-strengthening, long-wearing, no-chip formula. Gel-like cushion texture. Formulated without parabens and phthalates. 12 ml reg. \$18

~~\$12.99~~ \$10.49

SHIMMER
Carnation Constellation
042-897

SATIN
Astronautical Blue
042-878

SATIN
Magenta Retrograde
042-882

SATIN
Full Moon Flush
018-730

SATIN
Night Sky Berry
602-658

SATIN
High Magnitude Mauve
018-840

SATIN
Supernova Red
018-267



LIMITED EDITION

fmg Glimmer Glitz A-Peel Nail Lacquer

Glittery quick-dry formula stays on until you're ready to peel it off. Glossy finish. Formulated without parabens, toluene, formaldehyde and camphor. 12 ml reg. \$18

~~\$12.99~~ \$10.49

Leading Lady
538-430

Best in Class
538-459

Newlywed
538-425



just peels off
for fuss-free
removal



fmg Glimmer Nourished Nail Cuticle Oil

Nourishing formula for dry, damaged cuticles. Fortified with safflower oil to help restore and condition nails and cuticles. Formulated without phthalates, sulfates, parabens, toluene, formaldehyde and camphor. 12 ml reg. \$21

~~\$15.99~~



fmg Glimmer Nail Base & Top Coat

2-in-1 base and top coat primes and shields nails. Glossy finish. Formulated without parabens and phthalates. 12 ml reg. \$18

~~\$12.99~~ \$10.49



fmg Glimmer Nail Air Dry Drops

Need a fast finish? Accelerate your dry time with just a drop or two! Helps prevent smudges and nicks. Formulated without phthalates, sulfates, parabens, toluene, formaldehyde and camphor. 12 ml reg. \$21

~~\$15.99~~



fmg Glimmer Nail Lacquer Eraser Pen

For a clean and perfected mani. Won't dry out nails or cuticles. Formulated without parabens and phthalates. 4 ml reg. \$18

~~\$12.99~~ \$10.49



brushes with greatness

fmg Complexion Blending Brush

Dual ended: rounded buffing foundation brush and concealer brush. 17 cm L. Synthetic bristles. **933-210**

reg. \$35

\$26.99

fmg Precision Eye Brush

Dual ended: pointed pencil brush and angled eyeliner brush. 13 cm L. Synthetic bristles. **933-187**

reg. \$25

\$17.99

fmg Eyeshadow Blending Brush

Dual ended: crease brush and all-over eyeshadow brush. 15 cm L. Synthetic bristles. **933-320**

reg. \$25

\$17.99

fmg Blush & Contour Brush

Dual ended: angled contour brush and tapered, oval blush brush. 18 cm L. Synthetic bristles. **933-259**

reg. \$34

\$24.99



fmg Makeup Remover Wipes

With vitamin E and aloe, chamomile, cucumber, marshmallow root and oat extracts. Resealable pack of 24 wipes. Formulated without parabens, gluten, sulfates, phthalates and fragrance. **333-867**

reg. \$18

\$11.99



fmg Vanity Organizer

4 compartments with 2 removable inside dividers, 3 outer pockets and lattice elastic straps. Folds for easy storage. 24 cm L x 15 cm W x 13 cm H. Polyester. **022-816**

reg. \$46

\$34.99



fmg Oil Rewind Roller Ball

Reusable 360° rotating volcanic stone roller instantly absorbs oil and grease without disturbing makeup. 8 cm L x 3 cm W. Plastic handle, protective cap. **508-294**

reg. \$28

\$20.99



fmg Flawless Complexion Sponge

Dual ended: all-over makeup application rounded end, and contouring and concealing flat end. 6 cm L x 4 cm W. 100% PU, latex-free. **140-160**

reg. \$16

\$11.99



fmg Set & Fix Spray

Helps keep makeup smudge-proof. Non-greasy, non-sticky. Formulated without parabens, sulfates, phthalates and silicones. 50 ml **416-707**

reg. \$22

\$15.99



fmg Express Makeup Brush Wash

Easily removes dirt, oil and makeup. With aloe vera and green tea extract. Formulated without alcohol and sulfates. 30 ml **141-368**

reg. \$22

\$16.99



fmg Kabuki Brush

Soft, angled brush for pressed or loose powders. Retractable with protective cap. 10 cm L x 3 cm diam. Synthetic bristles. **732-370**

reg. \$29

\$22.99



Daily Beauty Tools Tweezers

Amp up your beauty routine with angled tweezers. Stainless steel. 9 cm L. **747-020**

reg. \$6

\$4.99



fmg Waterproof Lip & Eye Makeup Remover

Dual-layer oil and water remover leaves skin fresh and clean. Formulated without mineral oil, tar, talc and parabens. 110 ml **352-243**

reg. \$18

\$11.99



fmg Moisturizing Eye Makeup Remover Lotion

Cleans, refreshes and moisturizes as it whisks away eye makeup. Formulated without parabens, sulfates and phthalates. 75 ml **037-978**

reg. \$12

\$8.99



fmg Unready Makeup Remover Cloth

Dual sided. Reusable and travel friendly. 100% polyester. 25 cm sq. Machine wash and dry. **230-176**

reg. \$22

\$16.99

FRAGRANCE

From alluring eau de parfums to spirited colognes, fresh florals to woody notes, each scent in our collection lets you express yourself.

cause a stir

woody fougère

Black Suede

The Blend

Eau de Toilette

100 ml 433-865

reg. \$42

~~\$31.99~~ \$23.99

AVON
BLACK SUEDE
THE BLEND
LE MÉLANGE

Top: Juniper, Violet Leaves,
Aged Rum-Soaked Casks,
Lemon
Mid: Smoky Leather, Davana,
Lavender
Base: Cedarwood, Patchouli,
Vanilla, Vetiver, Spicy Woods

GET AN EXTRA 25% OFF Final price as shown.



Wild Country
Hair and Body Wash
150 ml 215-188
reg. \$13
\$9.99 \$7.49



Wild Country
Aftershave Splash
118 ml 366-432
reg. \$23
\$18.49 \$13.49



Black Suede
Hair and Body Wash
150 ml 230-200
reg. \$13
\$9.99 \$7.49

fresh aromatic

Wild Country
Cologne

Lavender, coriander seed and
sandalwood. 88 ml 086-466
reg. \$35

\$27.99 \$20.99

Packaging may vary.



effortlessly
cool

fresh aromatic

Black Suede
Eau de Toilette

100 ml 908-703
reg. \$35

\$27.99 \$20.99

Top: Bergamot,
Mandarin, Apple
Mid: Spearmint,
Coriander,
Cardamom,
Soft Leather
Base: Amber,
Myrrh, Oakmoss

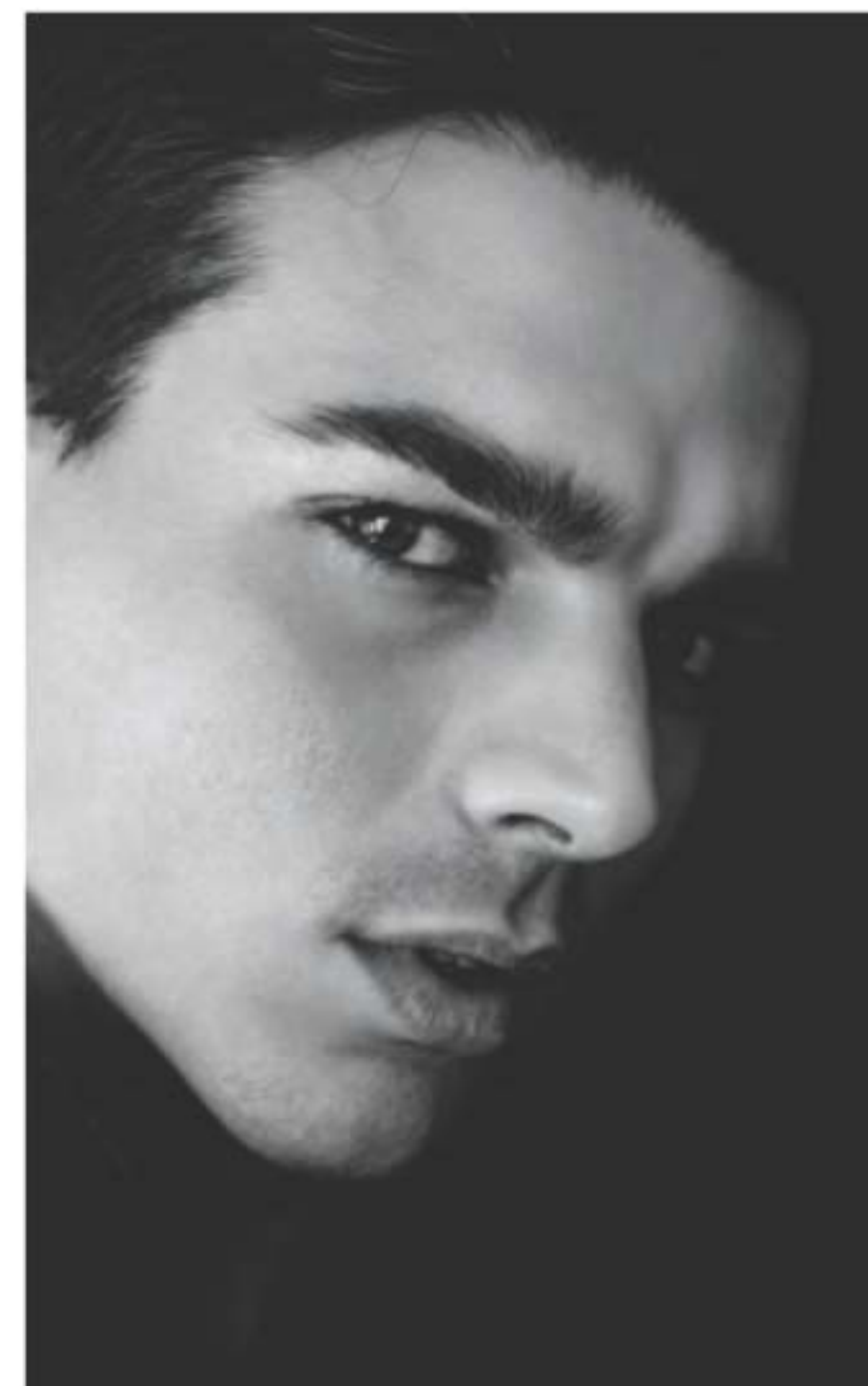


let your senses be your guide



fresh aromatic
Perceive Cologne
 100 ml 888-062
 reg. \$45
\$34.99

Top: Mandarin, Grapefruit, Sparkling Citrus
 Mid: Geranium, Earthy Sage, Lavender
 Base: Calming Cedarwood, Patchouli, Amber



captivate at a
 single glance



fresh aromatic
Mesmerize Cologne
 Bergamot, cardamom and amber.
 100 ml 871-458
 reg. \$45
\$34.99



woody fougère
Mesmerize Black Eau de Toilette
 Pepper, nutmeg and tonka bean.
 100 ml 305-667
 reg. \$45
\$34.99

IT'S YOUR LIFE, OWN IT.

Express yourself with an exciting, affirmative statement of pure confidence, fierce independence and vibrant energy.



amber floral

Live Out Loud U Be U

Top: Nectarine, Cardamom, Marshmallow
Mid: Sweet Fig, Coconut Praline, Jasmine
Base: Whipped Vanilla, Creamy Woods, Musk

Body Cream 048-000

Body Mist 047-114

fruity floral

Live Out Loud Retro Sun

Top: Guava, Tropical Mango, Tangerine
Mid: Plumeria, Orange Flower, Creamy Coconut
Base: Rich Amber, Moss, Cedarwood

Body Cream 047-300

Body Mist 047-076

fruity floral

Live Out Loud Guilt Free

Top: Bergamot, Plum, Pink Dragon Fruit
Mid: Muguet, Rose, Violet Leaf
Base: Sandalwood, Vanilla, Creamy Musk

Body Cream 047-320

Body Mist 047-100

Live Out Loud Body Cream

Fluffy, whipped cream with hyaluronic acid moisturizes, leaving skin soft, glowing and beautifully scented. 150 ml reg. \$32

\$23.99 each

Live Out Loud Body Mist

Lightweight, refreshing mist absorbs quickly and leaves skin feeling soft, supple and beautifully scented. 100 ml reg. \$34

\$25.99 each





fruity floral

Live Out Loud #4U Eau de Parfum
Mandarin, peach blossom and
vanilla. 50 ml **735-968**

reg. \$56

NOW \$31.49



fruity floral

Live Out Loud Eau de Parfum
Strawberry, mimosa and vanilla.
50 ml **142-000**

reg. \$56

\$42



fruity floral

**Live Out Loud Solar Vibes
Eau de Parfum**
Bergamot, coconut water and fluffy
marshmallow. 50 ml **835-822**

reg. \$56

NOW \$31.49

love begins with you



soft floral

Today Eau de Parfum
Magnolia blossoms, hibiscus
petals and silk musk. 50 ml
490-855

reg. \$56

\$42

elegant yet wild

fresh citrus

**LYRD
Clementine & Poppy
Eau de Parfum**
50 ml **922-384**
reg. \$63
\$49

Top: Fresh Air
Accord, Blood
Orange, Clementine,
Bergamot, Black
Currant
Mid: Guava, Poppy
Flowers, Orange
Blossom, Jasmine,
Tuberose
Base: Cashmere
Woods, Sheer Musk



lush & invigorating



LIMITED EDITION

❖ **LYRD Candle - Some Like It Hot**
Creamy coconut, juicy mandarin and warm vanilla. Up to 30 hours of burn time. 198.4 g. 8 cm diam. x 9 cm H. Glass jar/soy-blend wax.
746-450
reg. \$35
\$28.49



LIMITED EDITION

❖ **LYRD Candle - Back From The Beach**
Orange blossom, water lily and musk. Up to 30 hours of burn time. 198.4 g. 8 cm diam. x 9 cm H. Glass jar/soy-blend wax.
747-035
reg. \$35
\$28.49



LIMITED EDITION

❖ **LYRD Candle - Surf's Up, Bottoms Up**
Ripe banana, tropical rum and sweet whipped cream. Up to 30 hours of burn time. 198.4 g. 8 cm diam. x 9 cm H. Glass jar/soy-blend wax.
746-445
reg. \$35
\$28.49



LIMITED EDITION

❖ **LYRD Candle - Bonfire**
Earthy oakmoss, salty beach wood and fiery amber. 312 g candle gives up to 28 hours of burn time. 11 cm diam. x 8 cm H. Wooden wick, glass jar, soy-blend wax.
765-625
reg. \$35
\$27.99

Unique wooden wick design gives a clean, even burn.



fresh green floral
LYRD Pear Blossom & Bamboo
Eau de Parfum
50 ml **763-804**
reg. \$63
\$49

Top: Lemon Zest, Lavender, Kumquat, Dewy Bamboo
Mid: Magnolia, Sweet Pear Blossom, Water Lily
Base: Cashmere Woods, White Amber, Skin Musk

it's your time to bloom

soft floral

LYRD Honeysuckle Blossom Eau de Parfum

Apple blossom, honeysuckle nectar and vanilla orchid. 50 ml 167-270

reg. \$48

\$36



LYRD Honeysuckle Blossom Hair and Body Mist*

Lightweight formula with notes of apple blossom, honeysuckle nectar and vanilla orchid. Leaves hair with a subtle, healthy-looking shine. 96 ml 167-231

reg. \$27

\$20.99



LYRD Peony Rosé Hair and Body Mist*

Lightweight formula with notes of peony petals, pink currant and sheer musk. Leaves hair with a subtle, healthy-looking shine. 96 ml 167-212

reg. \$27

\$20.99



fresh green floral

LYRD Coastal Lotus Eau de Parfum

Sparkling mandarin, island gardenia and lotus flower. 50 ml 869-906 reg. \$60

\$49



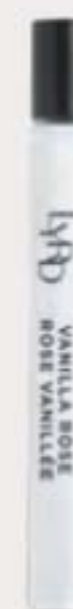
amber floral

LYRD Vanilla Rose Eau de Parfum

Dewy roses, comforting vanilla and cedarwood. 50 ml 094-020

reg. \$60

\$49



LYRD Vanilla Rose Eau de Parfum Travel Spray 10 ml 505-128

reg. \$27

NOW \$15.49



LYRD Sultry Orchid Eau de Parfum Travel Spray 10 ml 612-799

reg. \$27

\$20.99



amber floral

LYRD Sultry Orchid Eau de Parfum

Pink saffron, red orchid and warm amber. 50 ml 892-960 reg. \$60

\$49

**Best of
K-Beauty**

amber floral

**Avon Moments
Out On A Limb
Eau de Toilette**

Spicy cardamom,
honeyed mimosa
flower and
powdery
vanilla. 50 ml
196-112
reg. \$52

\$40.99

amber floral

**Avon Moments
Remember That Night
Eau de Toilette**

Sparkling grapefruit,
opulent jasmine
and amber. 50 ml
196-662
reg. \$52

\$40.99

fruity floral

**Avon Moments
Day Dreamer
Eau de Toilette**

Quince, dewy iris
and cedarwood.
50 ml 196-772
reg. \$52

\$40.99



serene. divine. elegant.

fresh green floral

Haiku Eau de Parfum

Yuzu, muguet and
blonde woods.
50 ml 521-170
reg. \$42

\$31.99



**Avon Moments
Out On A Limb Body Wash**
230 ml 196-442
reg. \$28
\$21.99



**Avon Moments
Remember That Night Body Wash**
230 ml 196-768
reg. \$28
\$21.99



**Avon Moments
Day Dreamer Body Wash**
230 ml 196-844
reg. \$28
\$21.99



woody floral
Haiku Sunrise Eau de Parfum
Coconut water, rhubarb and
cedarwood. 50 ml 091-500
reg. \$42
NOW \$23.99



fresh green floral
Haiku Kyoto Flower Eau de Parfum
Violet leaf, white peony and cotton
musk. 50 ml 144-352
reg. \$42
\$31.99



fresh green floral
Haiku Reflection Eau de Parfum
Water accord, acacia blossom
and amber wood. 50 ml 617-657
reg. \$42
\$31.99



fruity floral

Far Away Bali Eau de Parfum
Grapefruit, salted tuberose
and amber. 50 ml **451-389**
reg. \$42
NOW \$17.49



amber floral

Far Away Eau de Parfum
Freesia, jasmine and amber.
50 ml **685-712**
reg. \$42
\$31.99



fruity floral

Far Away Infinity Eau de Parfum
Bergamot, jasmine sambac
and sandalwood. 50 ml **888-301**
reg. \$42
\$31.99



amber floral

Far Away Gold Eau de Parfum
Ylang-ylang, jasmine
and vanilla. 50 ml **888-297**
reg. \$42
\$31.99

amber floral

Far Away Moroccan Nights Eau de Parfum
Spicy floral notes dance in
a Moroccan dream.
50 ml **612-655**
reg. \$42
\$31.99

Top: Violet Leaf, Powdery
Orris, Heliotrope
Mid: Blooming Moroccan
Mimosa, White Tonka,
Cardamom, Orange Flower
Base: Creamy Cashmere
Woods, Musk, Sandalwood

The Allure Of Moroccan Nights



woody floral

Imari Amor Eau de Parfum
Black currant, orris and musk.
50 ml 762-573 reg. \$42
\$31.99



amber floral

Imari Seduction Eau de Toilette
Wild berries, purple orchid and patchouli.
50 ml 452-897 reg. \$42
\$31.99

embrace your desire

amber floral
Imari Eau de Toilette
Bergamot, jasmine
and amber. 50 ml 871-496
reg. \$42
\$31.99



amber floral
Rare Gold Eau de Parfum
Mandarin zest, ylang-ylang
and amber. 50 ml 933-115
reg. \$45
\$34.99



soft floral
Rare Pearls Eau de Parfum
Magnolia, white pepper and rosewood.
50 ml 761-615
reg. \$45
\$34.99



fruity floral
Rare Amethyst Eau de Parfum
Plum, violet and sandalwood.
50 ml 933-062
reg. \$45
\$34.99

layering essentials

Far Away
Body Scrub
& Wash
200 ml
143-360
reg. \$21
**NOW
\$11.49**



Far Away
Hair and
Body Mist
96 ml
572-536
reg. \$26
NOW \$15.49



Far Away
Body Lotion
200 ml
082-881
reg. \$20
NOW \$9.99



Haiku
Hair and Body Mist
96 ml 572-574
reg. \$26
NOW \$15.49



Haiku
Hand Cream
75 ml 364-808
reg. \$13
\$9.99



Rare Pearls
Hand Cream
75 ml
364-827
reg. \$13
\$9.99



Far Away
Hand Cream
75 ml
364-850
reg. \$13
\$9.99



Haiku Body Lotion
200 ml 447-820
reg. \$20
\$15.99



Haiku
Body Scrub
& Wash
200 ml
143-208
reg. \$21
**NOW
\$11.49**



Rare Pearls
Body Lotion
200 ml
082-915
reg. \$20
**NOW
\$11.99**



Rare Pearls
Hair and Body
Mist
96 ml
572-851
reg. \$26
NOW \$15.49



soft floral

Soft Musk
Avon Classics Collection
Eau de Cologne Spray
Peach blossom, blonde woods
and sheer musk. 50 ml **787-790**
reg. \$28
\$22.99



soft floral

Dreamlife
Avon Classics Collection
Eau de Cologne Spray
Mimosa flower, rose and amber.
50 ml **236-227**
reg. \$28
\$22.99



woody floral

Night Magic
Avon Classics Collection
Eau de Cologne Spray
Neroli, jasmine and musk.
50 ml **439-495**
reg. \$28
\$22.99

scented softness

Perfumed Skin Softener

Moisturizing formula leaves skin feeling soft
and scented. 150 ml
reg. \$10

\$6.99 each

Avon Classics Candid 739-160
Avon Classics Odyssey 739-762
Imari 738-751
Haiku 738-694

Avon Classics Timeless 739-155
Avon Classics Sweet Honesty 740-246
Avon Classics Night Magic 738-766
Far Away 049-246



amber floral

Candid
Avon Classics Collection
Eau de Cologne Spray
Bergamot, tuberose and
patchouli. 50 ml **038-295**
reg. \$28
\$22.99



soft floral

Odyssey
Avon Classics Collection
Eau de Cologne Spray
Tuberose, ylang-ylang and
oakmoss. 50 ml **900-391**
reg. \$28
\$22.99



soft floral

Sweet Honesty
Avon Classics Collection
Eau de Cologne Spray
Lily of the valley, soft rose and
cedarwood. 50 ml **901-861**
reg. \$28
\$22.99



soft floral

Timeless
Avon Classics Collection
Eau de Cologne Spray
Cardamom, jasmine and
patchouli. 50 ml **037-930**
reg. \$28
\$22.99



soft floral

Topaze
Avon Classics Collection
Eau de Cologne Spray
Jasmine, rose and sheer musk.
50 ml **735-217**
reg. \$28
\$22.99



fresh green floral

Free O₂
Eau de Toilette
White peach tea, honeysuckle
and musk. 50 ml **490-840**
reg. \$28
\$22.99



BATH & BODY

Pamper yourself from head to toe. We keep your body and hair looking healthy so you'll love your locks and have more confidence.





NEW Skin So Soft + HydroPlenish

WITH HYALURONIC ACID

Enhanced with
squalane, niacinamide and other
high-performance ingredients
to help boost and lock in hydration
so skin appears plumper,
softer and smoother with a
healthy looking glow.

NEW

Body Scrub

Exfoliating body scrub with sunflower seed oil and cupuaçu butter to help soften, smooth and improve the look of skin's texture while helping to boost hydration and restore the look of skin's natural glow. Lightly fragranced. 233 g **763-857**
reg. \$36

\$28.99

NEW

Shower Gel

Multitasking body cleanser with sunflower seed oil and cupuaçu butter to help soften, smooth and improve the look of skin's texture while helping to boost hydration and restore the look of skin's natural glow. Lightly fragranced. 236 ml **763-967**
reg. \$33

\$25.99

formulated with:

**HYALURONIC
ACID**

SQUALANE

NIACINAMIDE



BOTH FOR \$38.49 \$69 value

182-291



Indulge in these ultra-luxe, hydrating body moisturizers to give your skin a healthy and dewy looking glow all day.



NEW Skin So Soft + HYDROPLENISH with Hyaluronic Acid



NEW

Body Lotion

48-hour moisturization. Replenishing body lotion with hyaluronic acid and panthenol to help boost hydration and restore the look of skin's glow. Lightly fragranced. 350 ml
764-160
reg. \$37
\$29.99

NEW

Bath & Body Oil

48-hour moisturization. With hyaluronic acid, sunflower seed oil and cupuaçu butter to boost hydration, help skin look dewy and restore the look of skin's glow. Lightly fragranced. 350 ml
763-971
reg. \$55
\$43.49

BOTH FOR \$51.49 \$92 value

182-287

**NEW Skin So Soft +
RADIANT RENEW**
with Retinol

REFRESH. REVITALIZE. REVEAL *your radiance.*

with rejuvenating retinol known to help brighten the appearance and even the look of skin tone, plus bisabolol, known to help skin look firmer.

Retinol formulas enhanced with skin-loving ingredients help leave skin looking and feeling softer, smoother and rejuvenated.



Bath & Body Oil
Up to 48 hours of hydration. With squalane to help boost moisture. Skin looks soft and smooth with a radiant glow. Apply during or after your bath or shower. Lightly fragrances. 350 ml **051-955**
reg. \$55
\$43.49

Shower Gel
Infused with argan oil, known to be an abundant source of fatty acids, antioxidants and vitamin E. Skin looks softer, smoother and more radiant. Lightly fragrances. 236 ml **051-458**
reg. \$33
\$25.99

Body Lotion
Up to 48 hours of moisturization. With hydrating hyaluronic acid to help skin appear more supple and radiant. Lightly fragrances. 350 ml **051-974**
reg. \$37
\$29.99

THE BEAUTY OF *Jojoba Oil*



SKIN SO SOFT ORIGINAL

Bath Oil
500 ml 439-040
reg. \$35
\$27.99

Replenishing Hand Cream
100 ml 776-633
reg. \$11
\$8.49

Beauty Bar Soap
90 g 543-110
reg. \$7
NOW \$3.99

Body Lotion
350 ml 761-634
reg. \$24
\$17.99

Bonus-Size Body Lotion
1 litre 825-351
reg. \$37
\$25.49

Bonus-Size Shower Gel
1 litre 433-444
reg. \$27
\$20.99

Shower Gel
150 ml 914-580
reg. \$13
\$8.49

This plant extract mimics skin's natural oils with vitamins and minerals essential to keeping skin feeling soft and smooth.

**Gelled
Body Oil**
Dries to a
silky finish.
200 ml
939-500
reg. \$23
\$17.99

**Bath Oil
Spray**
Locks in
hydration.
150 ml
441-692
reg. \$27
\$19.99

**Bonus-Size
Bath Oil**
729 ml
663-480
reg. \$49
\$37.99



THE BEAUTY OF *Argan Oil*

So precious, it's called "liquid gold."

Packed with vitamin E, it helps to restore the look of skin's lustre and keep it feeling irresistibly soft.



Gelled Body Oil
Dries to a silky finish.
200 ml 908-244
reg. \$23
\$17.99

Bonus-Size Bath Oil
Hydrates during, or
after, bath or shower.
739 ml 862-920
reg. \$49
\$37.99



SKIN SO SOFT SOFT & SENSUAL

Bath Oil
With argan oil. Spicy floral scent.
500 ml 504-614 reg. \$35
\$27.99

Shower Gel
Gently cleanses and hydrates.
150 ml 914-710 reg. \$13
\$8.49

Bonus-Size Shower Gel
Gently cleanses and hydrates.
1 litre 018-142 reg. \$27
\$20.99

Body Lotion
Up to 48 hours of moisturization.
350 ml 400-720 reg. \$24
\$17.99

Replenishing Hand Cream
Up to 24 hours of moisturization.
100 ml 779-924 reg. \$11
\$8.49

Bonus-Size Body Lotion
Up to 48 hours of moisturization.
1 litre 825-643 reg. \$37
\$25.49

Beauty Bar Soap
Suitable for daily use.
90 g 543-215 reg. \$7
NOW \$3.99



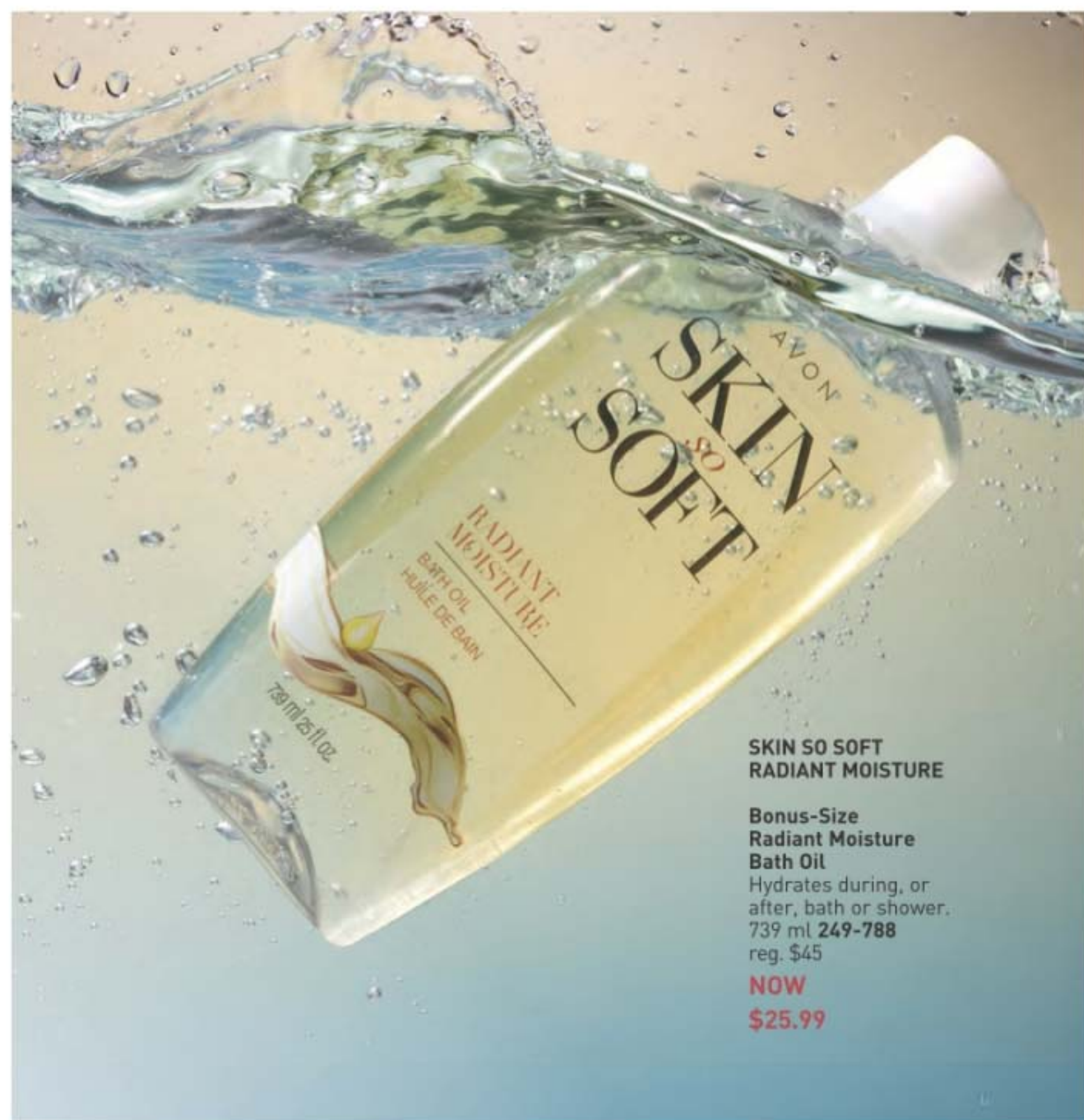
**Bonus-Size
Shower Gel**
Gently cleanses
and hydrates.
1 litre **433-922**
reg. \$25
NOW
\$15.49



**Bonus-Size
Body Lotion**
Up to 48 hours
of hydration.
1 litre **620-956**
reg. \$37
NOW
\$18.99



**Skin So Soft
Botanical Essence Bath Oil**
With nourishing botanical
extracts. Uplifting herbal
scent. 480 ml
027-253
reg. \$45
NOW \$25.99



**SKIN SO SOFT
RADIANT MOISTURE**

**Bonus-Size
Radiant Moisture
Bath Oil**
Hydrates during, or
after, bath or shower.
739 ml **249-788**
reg. \$45
NOW
\$25.99

**Replenishing
Hand Cream**
Up to 24 hours
of hydration.
100 ml **776-561**
reg. \$11
NOW
\$5.99



**Skin So Soft
Comforting Shea
Bath Oil**
With shea butter and oil.
Vanilla, sandalwood and
musk scent. 500 ml
015-071
reg. \$34
NOW \$18.49



Shower Gel
Gently cleanses
and hydrates.
150 ml **410-914**
reg. \$13
NOW
\$6.99



**Skin So Soft
Supreme Nourishment
Enriching Coconut Oil
Milk Lotion**
Leaves skin feeling
silky soft. 350 ml
419-835
reg. \$24
NOW \$13.49



SKIN SO SOFT PURE NATURE REVITALIZING BODY COLLECTION
Sustainable packaging*
Eucalyptus mint scent

Body Cream
94% naturally derived.
Smooth on moisturizing cream after bath or shower.
355 ml **629-767**
reg. \$31

NOW \$17.99

Shower Gel
96% naturally derived.
Richly lathering gel.
355 ml **415-170**
reg. \$31

\$23.99

In-Shower Body Lotion
95% naturally derived.
Hydrating and softening lotion. Apply on wet skin after shower or bath.
236 ml **633-857**
reg. \$31

\$23.99

SKIN SO SOFT PURE NATURE HAIR COLLECTION
Sustainable packaging*
Eucalyptus mint scent

Shampoo
With panthenol known to help moisturize, and citric acid, known to help hair look healthier. 355 ml **290-074**
reg. \$32

\$24.99

Conditioner
With panthenol known to help moisturize and improve the look of elasticity. Leaves locks looking smooth, healthy and shiny. 355 ml **290-089**
reg. \$32

\$24.99

Intense Hair Mask
With panthenol known to help moisturize and improve the look of elasticity for smoother, softer, stronger looking hair. 236 ml **290-131**
reg. \$32

\$24.99

*Shampoo, Conditioner, Shower Gel and Body Cream bottles: 95% post-consumer recycled material, excluding cap. Hair Mask and Body Lotion tubes: 55% post-consumer recycled material, excluding cap.



ooh la lavender



SKIN SO SOFT CALMING LAVENDER

Infused with a superior blend of **lavender** and **chamomile** essential oils, plus **jasmine**, for skin that feels softer and smoother with a healthy looking glow. **Tranquil lavender scent.**

Body & Bath Oil
With a luxe blend of lavender and chamomile essential oils, plus jasmine extract, this antioxidant-infused bath oil leaves skin feeling soft and supple. 350 ml **511-354**
reg. \$45
\$34.99

Sugar Scrub
Exfoliating scrub enhanced with jasmine extract and a relaxing blend of essential oils and allantoin. Skin looks and feels moisturized and smoother. 255 g **512-418**
reg. \$28
\$21.99

Body Lotion
With sunflower and rosehip seed oils to help skin feel softer and smoother, shea butter to lock in moisture; plus hyaluronic acid and aloe. Contains jasmine essential oil and resveratrol to help keep skin looking supple and youthful. 350 ml **511-995**
reg. \$31
\$23.99

**Skin So Soft
Fresh & Smooth
Facial Hair
Removal Cream**
Easily removes
unwanted facial
hair. 30 ml
562-543
reg. \$19
\$13.99



**Skin So Soft
Fresh & Smooth
Body Hair
Removal Cream**
Easily removes
unwanted body
hair. 125 ml
562-467
reg. \$14.50
\$11.49



**Foaming
Cleanser**
150 ml 041-647
reg. \$24
NOW \$13.99



**Soothing
Gel**
180 ml 040-636
reg. \$29
NOW \$16.99



**Exfoliating
Body Wash**
300 ml 041-556
reg. \$28
NOW \$16.99



facial bar soaps

With Skin So Soft signature oils
and other skin pampering ingredients.

**Best of
K-Beauty**



**Skin So Soft Facial Bar
Hyaluronic Acid*
& Niacinamide***
Enriches skin with
moisture. 90 g
364-573
reg. \$9
\$6.99

**Skin So Soft Facial Bar
Salicylic** & Lactic** Acids**
Gently exfoliates to help
skin look softer and
luxuriously smooth. 90 g
364-569
reg. \$9
NOW \$4.99

**Skin So Soft Facial Bar
Retinol** & Vitamin C***
Helps even the look
of tone, brighten
and enhance the
appearance of skin
clarity. 90 g
364-607
reg. \$9
\$6.99

**Skin So Soft Facial Bar
Collagen** & Goat Milk*****
Deeply hydrates. 90 g
364-626
reg. \$9
\$6.99

*0.001%, **0.0009%, †0.0001%, ††0.00001%, ***0.007%

Skin So Soft for ACNE-PRONE SKIN

Developed for all skin types with
gently exfoliating salicylic acid.
Suitable for daily use. Formulated
without synthetic fragrances.



Moisture Therapy Intensive Healing & Repair All Over Rescue Balm Stick
Up to 24 hours of moisturization in a convenient, mess-free, glide-on stick. Fragrance-free. Apply anywhere on body, face and even lips. 18 g 470-004 reg. \$25
\$19.99



Moisture Therapy Intensive Healing & Repair All Over Rescue Balm
Up to 24 hours of moisturization for extra-dry skin. With avocado oil and shea butter. Apply anywhere on body, face and even lips to seal in moisture and keep skin looking healthy. Fragrance-free. 75 ml 419-840 reg. \$21
\$16.99

Moisture Therapy Intensive Healing & Repair Extra Strength Cream
Up to 24 hours of moisturization. Fragrance-free. 150 g 224-982 reg. \$13
\$9.99



Moisture Therapy Intensive Healing & Repair Hand Cream
For extremely dry skin. Fragrance-free. 125 ml 845-982 reg. \$12
NOW \$5.99



Moisture Therapy Balance + Soothe Body Wash
Softens while it gently cleanses. 390 ml 438-078 reg. \$33
NOW \$19.49



Moisture Therapy Balance + Soothe Body Lotion
Replenishes moisture to leave skin softer and healthier looking. 390 ml 438-082 reg. \$35
NOW \$21



Need more? Get more with bonus size lotions.

Bonus-Size Moisture Therapy Body Lotion
1 litre
reg. \$35
\$27.99 each

Daily Skin Defense
Helps restore moisture to everyday dry skin. 725-793

Calming Relief
Relieves dry, itchy skin. Fragrance free. 639-802

Intensive Healing & Repair
Up to 72 hours of moisture for extra-dry skin. Fragrance-free. 639-745



IS IT HOT IN HERE?!

(or it is me?)

NEW! Hit Pause

Look and feel your best through menopause and perimenopause.

A cool rose scented collection formulated with Superfood Amla Berry Extract.



hit pause.

hydrating body cream
with superfood amla berry extract
crème hydratante
pour le corps
avec extrait de baie
d'amlà, un superaliment

hit pause.

refreshing wipes
lingettes rafraîchissantes

hit pause.

all over cooling mist
with superfood amla berry extract
brume rafraîchissante
pour le corps
avec extrait de baie d'amlà
un superaliment

**Hot flash on the go?
No sweat!**

Refreshing Wipes
With Superfood Amla Berry Extract. Pre-moistened towelettes remove sweat and dirt from your face, hands and body, with no water or rinsing needed. Safe for external down-there places, armpits or anywhere you need to refresh. Rose scent. 30 wipes. **264-264**
reg. \$19
\$14.49

**Body craving
moisture all over?
Drink up.**

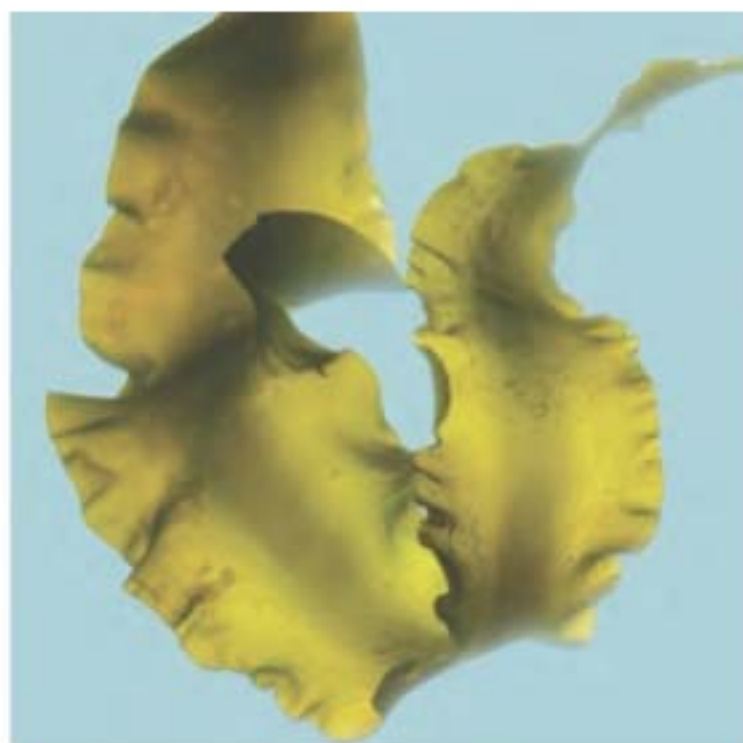
Hydrating Body Cream
With Superfood Amla Berry Extract. Lightweight, fast absorbing moisturizer with panthenol to help skin and combat dryness, boost the look of elasticity and reduce the appearance of crepiness. Rose scent. 200 ml **263-990**
reg. \$32
\$24.49

Hot flash? Night sweats? Chill out.

All Over Cooling Mist
With Superfood Amla Berry Extract. Cooling refreshment for face or body to energize and hydrate. Spray anytime. Rose scent. 100 ml **264-336**
reg. \$36
\$28.99

ALL 3 FOR \$47.99 179-906

new Organist Algae Collection for body and hair



Our micro-algae complex combines with kelp and seaweed to deliver an intense wave of hydration.



Frizzy strands and dry skin look and feel radiantly smooth.



Unique formulations for body and hair are enriched with sea vegetables.



ALL NEW

Organist Algae Moisture Shampoo

Lightweight jelly formula delivers an intense wave of deep hydration so hair feels soft. Helps tame frizz and reduce the look of split ends for a sleek, polished appearance. Refreshes scalp. 500 ml **286-410** reg. \$32

\$24.99

Organist Algae Deep Moisture Hair Mask

For deep moisture and frizz control. Perfect for dry hair, leaves strands feeling softer, stronger and frizz-free. Intensely hydrates with hyaluronic acid. Infused with Hydro Green Pearls that dissolve on contact. 200 ml **286-462** reg. \$31

\$22.99

BOTH FOR \$35.99

179-834



Organist Algae Jelly Body Wash

Replenishing botanicals and algae, plus Hydro Green Pearls that dissolve on contact, helps hydrate and support the moisture barrier as it cleanses. Softens and refreshes the look of dry, dull skin for a healthy looking, youthful glow. 500 ml **286-520** reg. \$32

\$24.99

Organist Algae Whipped Body Cream

Helps deliver intense, lasting moisture for soft, supple, velvety smooth skin and enhanced natural radiance for a youthful looking glow. Enriched with 10% squalane to help support skin's moisture barrier and enhance the look of elasticity. 130 g **286-591** reg. \$32

\$24.99

BOTH FOR \$35.99

589-671

Organist Rosemary + Mint | *revitalizing*

- helps hydrate the scalp
- with the natural goodness of rosemary



With rosemary and biotin, to help keep your scalp and hair looking healthy. Refreshing, cooling peppermint helps your scalp feel revitalized.

500 ml
Shampoo
542-974
Conditioner
542-993
reg. \$32
\$24.99 each

Scalp Strengthening Tonic
With rosemary, mint, biotin and caffeine. Scalp feels revitalized with a cooling sensation. Hair looks fuller, thicker and stronger. 150 ml
544-427
reg. \$36
\$28.99

Hair Strengthening Oil
2-in-1 daily-use oil for hair and scalp. With essential oils, 99% derived from plants, plus biotin. Rosemary and mint blend. Hair feels fortified and refreshed. 60 ml
542-845
reg. \$36
\$28.99

Body Wash
Invigorate your senses. Formulated with AHA/BHA/PHA and panthenol. 500 ml
544-446
reg. \$32
\$24.99

Gua Sha Scalp Massager
For scalp, neck and body. Wood.
542-960
reg. \$36
\$28.99



dry shampoo on the go

Travel-friendly scalp puff with revitalizing rosemary and biotin



BEFORE



AFTER



Images are simulations for illustrative purposes only. Individual results may vary.



NEW

Organist Rosemary Mint Dry Shampoo

Easy to use, mess-free puff applicator and fast-acting formula with a revitalizing blend of rosemary mint and biotin helps absorb excess oil on scalp and at the roots so hair looks clean and fresh between washes. Perfect for on the go. Formulated without sulfates and parabens. 8 g
078-787
reg. \$36
\$28.99

Organist Rice Water | *hydrating*

- a time-honoured Asian beauty secret
- rich in amino acids, vitamins B and E, and minerals
- helps reduce breakage and split ends to smooth hair and improve shine and manageability



add moisture to dry, damaged hair for a healthy-looking shine

CLEANSE

Damage Care Shampoo

With biotin, ceramide, protein and 17 amino acids to revitalize dry strands, helping to restore strength and resilience. Enriching rice water helps transform dry hair into a silky mane. 500 ml **381-803** reg. \$32

\$24.99

HYDRATE

Damage Care Treatment

Perfect for hair in need of hydration. Biotin, protein and 17 amino acids help revitalize dry strands from within. Hyaluronic acid and collagen help smooth hair for resilience and softness. 200 ml **381-860** reg. \$32

\$24.99



jasmine
and
freesia
scent

Oil Layer

Essence Layer



BEFORE



AFTER

hydrate hair with an uplifting fragrance mist

Moisture Replenish Hair Mist

2-layer mist. A hydrating essence layer plus 5-plant oil layer, including jojoba and argan oils, for deep moisturization. Rice water, biotin, ceramide, protein and amino acids help revitalize, nourish and soften dry, damaged hair. Shake well before use. Use on damp or dry hair. Fresh floral scent. 80 ml

381-985
reg. \$36

\$28.99

Images show results using Organist Rice Water Moisture Replenish Hair Mist as directed. Mist was applied multiple times on dry hair. Minimal styling for consistency. Results may vary.

FOR BODY

with antioxidants ideal for helping to moisturize dry skin

CLEANSE

Nourishing Body Wash

With soap derived from olive oil. Contains panthenol and hyaluronic acid. Helps skin appear soft and moisturized. 500 ml

382-097
reg. \$27

\$20.99

HYDRATE

Nourishing Body Milk

With plant-derived moisturizer and plant derived oil (squalane) to help hydrate and nourish dry skin. Easily absorbed. Nongreasy. 300 ml

382-336
reg. \$27

\$20.99



Organist Apple Cider Vinegar | *clarifying*

Crafted from a curated selection of ingredients, including apple cider vinegar extract, ginger, menthol and biotin. Formulated without silicone oil or sulfates.

Clarifying Shampoo

Helps clarify and nourish scalp and hair for a healthy-looking shine while it cleanses. 500 ml **482-650**
reg. \$32
\$24.99

Clarifying Conditioner

Helps clarify and nourish scalp and hair for a healthy-looking shine. 500 ml **482-664**
reg. \$32
\$24.99

Clarifying Water Treatment

Infused with collagen and hyaluronic acid. Formulated to clarify and help locks look naturally soft and flowing instantly with a healthy looking shine. 180 ml **482-717**
reg. \$27
\$20.99

Scalp Tonic

Leave-on scalp tonic made with a blend of 10 natural herbs. Revitalizes the scalp. 150 ml **482-721**
reg. \$34
\$26.99



FOR BODY

Body Wash

Blends apple cider vinegar extract with panthenol so skin feels refreshed and nourished. 500 ml **482-740**
reg. \$27
\$20.99



Exfoliating Body Scrub

With panthenol and AHA/BHA/PHA, gently exfoliates dead skin cells to help skin look and feel refreshed all over. 200 ml **482-846**
reg. \$27
\$20.99



Organist Botanical Castile Soap

Daily vegan washes for face and body infused with soap made from olive oil, and formulated without parabens, silicone oil or sulfates. Leaves skin feeling refreshed, revitalized and luxuriously moisturized while it cleanses.

revitalize

FOR OILY SKIN

Tea Tree & AHA BHA

Helps target excess oil as it deeply cleanses and refreshes. Fresh herbal scent. 480 ml **348-115**
reg. \$27
\$20.99

moisturize

FOR DRY SKIN

Rose Water & Hyaluronic Acid

Low-pH formula helps replenish moisture. Crisp floral scent. 480 ml **348-100**
reg. \$27
\$20.99

relax

FOR NORMAL SKIN

Lavender Oil & Vitamin E

Helps skin feel refreshed while promoting a relaxing experience. Lavender scent. 480 ml **048-398**
reg. \$27
\$20.99



Best of
K-Beauty

SENSES AQUATIC BREEZE

Bubble Bath
700 ml
746-388
reg. \$23
\$18.49

Body Scrub
240 g
746-426
reg. \$34
\$26.49

**SENSES SUN-KISSED COCONUT**

Bubble Bath
700 ml
746-369
reg. \$23
\$18.49

Body Scrub
240 g
746-407
reg. \$34
\$26.49

**soak away stress**

**Senses
Bubble Bath**
700 ml
reg. \$23
\$18.49 each



Cherry
Blossom
929-211

Vanilla
Cream
875-669

Cucumber
Melon
688-950

Sensitive
Skin
875-400

Orange &
Honeysuckle
633-952

Lily & Honeysuckle
Blossom
805-524

Lavender
Garden
381-799

SENSES STRAWBERRY SUNSET

Bubble Bath
700 ml
746-354
reg. \$23
\$18.49

Body Scrub
240 g
746-392
reg. \$34
\$26.49

**SENSES CARAMEL SOL**

Bubble Bath
700 ml
746-373
reg. \$23
\$18.49

Body Scrub
240 g
746-411
reg. \$34
\$26.49



Senses Lip Balm
4.1 g
Strawberry
554-219
reg. \$5
\$3.49



**Senses
Shower Gel**
Fresh
Cucumber &
Melon
150 ml
400-716
reg. \$12
\$8.49



**Senses
Shower Gel**
Blushing
Cherry
Blossom
150 ml
921-847
reg. \$12
\$8.49



Senses Lip Balm
4.1 g
Cherry
554-223
reg. \$5
\$3.49



**Senses
Shower Gel**
Silky Vanilla
150 ml
248-140
reg. \$12
\$8.49



**Senses
Shower Gel**
Juicy Pomegranate
& Mango
150 ml
248-155
reg. \$12
\$8.49



Best of
K-Beauty

AN ORAL CARE
INNOVATION:

HIMALAYA PINK SALT

For a healthy, whiter,
brighter looking smile.
Enriched with Himalayan
Pink Salt.

Himalaya Pink Salt Purple Whitening Toothbrush

Purple colour fades
as bristles wear,
reminding you to
replace. Clinically
tested to remove 4X
more interdental
plaque.* Bristles
with 2X the elasticity
clean narrow gaps
between teeth and
the gum line.

383-165
reg. \$13

\$9.49

*Compared to LG H&H regular
toothbrush with soft bristles.



Himalaya Pink Salt Whitening Toothbrush (Medium)

Bristles are infused
with Himalayan pink
salt for effective
cleansing and a gentle
brightening effect.
Medium size brush.
High tension bristles
penetrate narrow gaps.

729-359
reg. \$12

\$8.99

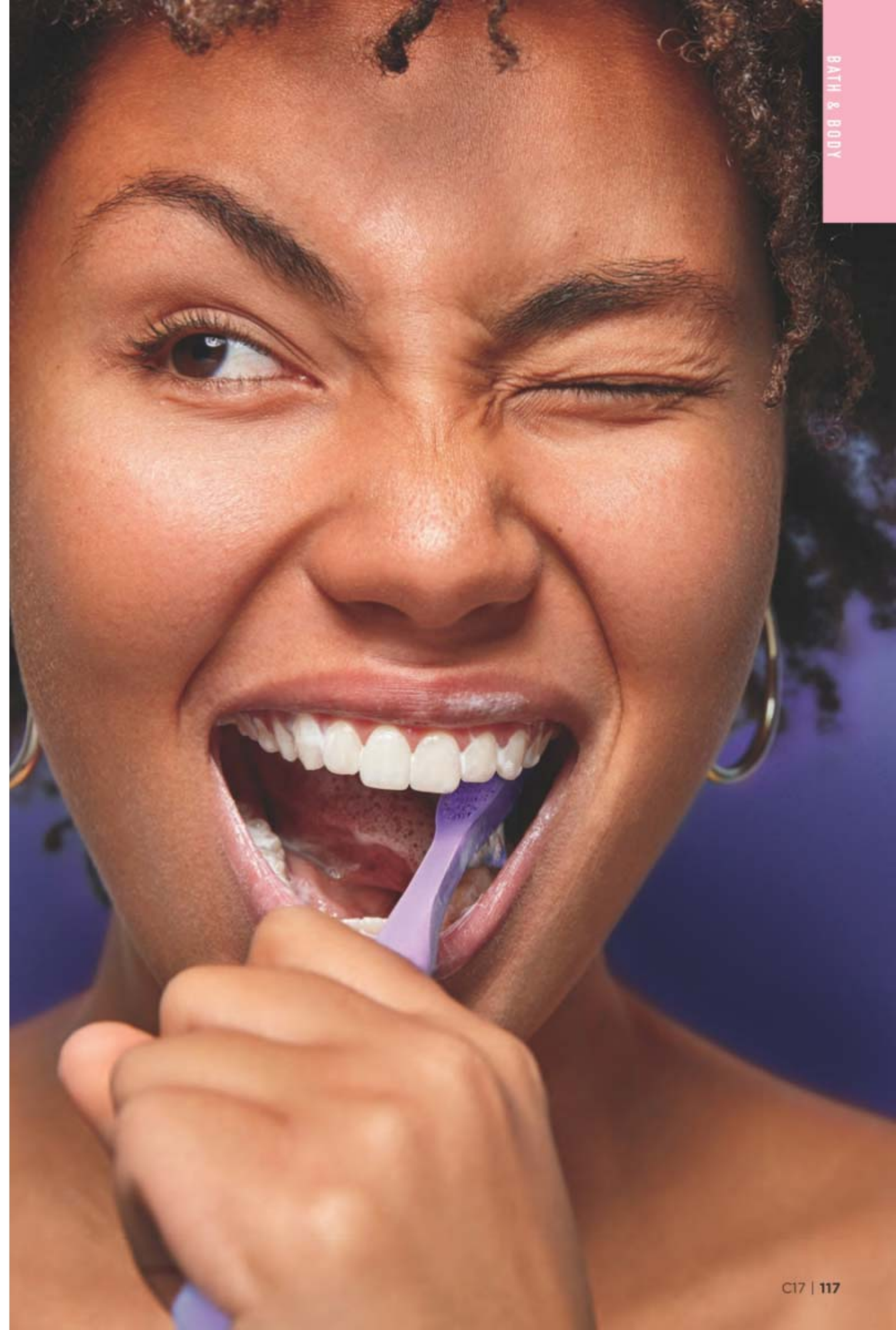


Himalaya Pink Salt Intensive Whitening Toothbrush (Large)

Bristles are infused
with Himalayan pink
salt for effective
cleansing and a
gentle brightening
effect. Large size
brush. High tension
bristles penetrate
narrow gaps.

035-812
reg. \$13

\$9.49





**Foot Works
Intensive Moisture
Foot Cream**
Suitable for
diabetics. 75 ml
069-016
reg. \$17
\$13.99



**Foot Works
Intensive Callus
Cream**
Softens hard
calluses. 90 g
851-310
reg. \$17
\$13.99



SOLE MATES

Step up your routine to help restore healthy-looking feet with Foot Works



**Foot Works
Deodorizing Spray**
Can also be used
in footwear. 100 g
313-236
reg. \$21
\$16.99



4 in 1:
• Fine-grain file
• Metal file
• Pumice
• Brush
**Foot Works
Pedicure Tool**
592-712
reg. \$17
\$13.99



Kit includes:
• Nail clipper
• Toenail clipper
• Scissors
• Small nail file
• Cuticle pusher
Foot Works Pedicure Kit
Case, 9 cm L x 12 cm W.
121-029
reg. \$21
\$16.99



make the
great outdoors
yours

Non-greasy and quick drying,
Bug Guard Plus Icaridin helps repel
mosquitoes for up to 5 hours, deer
ticks for up to 7 hours and is safe
for the entire family.



**Insect Repellent
Spray II**
236 ml
510-195
reg. \$35.25
\$25.99



**Insect Repellent
Spray II**
118 ml
510-161
reg. \$25.99
\$17.99

Sweet Honey
326-008Night Magic
Evening Musk
174-718Rare Pearls
174-373Timeless
326-012Haiku
326-247Far Away
174-369Feelin' Fresh
Original
325-805

**Roll-On
Anti-Perspirant
Deodorant**
75 ml
reg. \$9
\$7.49 each

Skin So Soft
Soft & Sensual
326-141Imari
765-534Rare Gold
174-407On Duty Sport
325-972On Duty
Unscented
173-802On Duty
Original
325-638Mesmerize
326-290Black Suede
326-323Wild Country
326-027Cool Confidence
Original
325-991Cool Confidence
Baby Powder
765-352Imari Essence
568-890Far Away Essence
568-852Skin So Soft
Soft & Sensual Essence
326-338Feelin' Fresh Essence
174-957On Duty Essence
175-312On Duty Sport Essence
569-146Black Suede
Essence
175-456Wild Country
Essence
178-460

**Roll-On
Anti-Perspirant
Deodorant**
50 ml
reg. \$7.25
\$5.99 each

Avon Shower Brush

Long handle to reach down back. Brush helps cleanse. Back of brush features massage nubs. Non-slip, comfort handle has a convenient hanging loop.

904-727
reg. \$16
\$11.99

Exfoliation Mitt

Microfibre jacquard with nylon/spandex cuff. **439-734**
reg. \$20

\$15.99



Perfumed Liquid Deodorant

Soft floral scent. Aluminum-free. Fast-drying. Easy fingertip application. 59 ml **889-915**
reg. \$14

\$10.99



Avon Microbiome by Reach® Hygiene Deodorant Stick

Floral citrus scent. Aluminum-free. 24-hour odour protection. 75 g **524-528**
reg. \$22

\$17.99

CHI's unique blend includes aloe vera, pomegranate, hibiscus and other ingredients for healthy looking hair.

CHI® Essentials
Moisturizing Conditioner
355 ml 589-409
reg. \$32
NOW \$18.49

CHI® Essentials
Replenishing Shampoo
355 ml 589-140
reg. \$32
NOW \$18.49



Elastine
Salon de Color
Color Vibe
Purple Shampoo
250 ml 436-109
reg. \$27
NOW \$15.49



Elastine
Salon de Color
Color Vibe
Purple Conditioner
250 ml 436-955
reg. \$27
NOW \$15.49



Avon
Blow-Dry
Round Hairbrush
504-800
reg. \$28
\$22.99



Avon
Detangling Comb
504-820
reg. \$13
\$8.99



CHI® Essentials
Revive Keratin +
Bonding
Restoring
Shampoo
355 ml 451-192
reg. \$35
NOW \$20.99



Avon
Compact
Hairbrush
504-743
reg. \$16
\$11.99



Avon
Detangling
Hairbrush
504-815
reg. \$20
\$15.99





ROOTS? NEVER.

Root Touch-Up

Instantly covers up roots and bare spots. With black bean and ginseng. Built-in mirror. 7 g reg. \$28

\$22.99 each



Reddish
Brown
243-627



Light
Brown
244-642



Dark Brown
245-213



Black
245-251



Elastine
PropoliThera
Hair Oil Serum
170 ml
895-190
reg. \$31
NOW \$17.49



Elastine
PropoliThera
Damage Repair
Shampoo
500 ml
053-082
reg. \$27
NOW \$16.99



Best of
K-Beauty

Elastine
PropoliThera
Serum
Treatment
230 ml
359-821
reg. \$31
\$25.99



Elastine
PropoliThera
Hair Deep Conditioning
Treatment Cap
Single-use cap.
053-761
reg. \$13
\$9.99



Elastine
PropoliThera
Damage Repair
Conditioner
500 ml
638-681
reg. \$27
NOW \$16.99



Best of
K-Beauty

GREAT HAIR STARTS WITH SCALP CARE

Dr. Groot Premium Scalp Cleansing Brush
Helps promote cleansing of residue while
massaging to reinvigorate scalp as it helps
to stimulate circulation. **065-776**
reg. \$28
\$22



**Dr. Groot Microbiome Scalp Fortifying
Serum Treatment**
Moisturizes and helps support
healthy looking hair. 200 ml
782-271
reg. \$49
\$41



**Dr. Groot Microbiome Scalp Fortifying
Hair-Thickening Shampoo**
With coconut oil, cleanses as it helps
moisturize dry scalp and hair. 400 ml
778-014
reg. \$49
\$41

cool & comfy combos

Easy wearing neutrals with complementary stripes, cozy meets sporty pairings... plus, bring on the tees, please.



ALL NEW

❖ Striped Sweatshirt

Black/cream stripe terry sweatshirt with ribbed collar and cuffs, and side slits. Cotton. Centre back length: 60 cm on M; 62 cm on 1X. Machine wash, dry flat.

XS(0-2) 464-533
S(4-6) 464-662
M(8-10) 464-830
L(12-14) 464-844
XL(16) 464-859

1X(18W-20W) 464-878
2X(22W-24W) 465-070
3X(26W-28W) 465-104
reg. \$69.99

\$54.99

❖ Side Stripe Trouser

Black trousers with cream side stripe. Button front, side seam pockets and elastic back waist. Polyester/spandex. Inseam: 76 cm all sizes. Machine wash, line dry.

XS(0-2) 465-195
S(4-6) 465-200
M(8-10) 465-248
L(12-14) 465-362
XL(16) 465-377

1X(18W-20W) 465-396
2X(22W-24W) 465-802
3X(26W-28W) 465-836
reg. \$66.99

\$51.99

Contour Links Collection and
Boho Wanderer Hoop Earrings
sold on pages 145-146.



NEW❖ **Flared Legging**

Blue classic sporty leggings with elastic waistband. Flared leg features zipper side slits at ankle. Polyamide/spandex. Inseam: 76 cm all sizes. Machine wash, dry flat.

XS(0-2) **466-957**S(4-6) **467-714**M(8-10) **469-406**L(12-14) **471-656**XL(16) **472-208**1X(18W-20W) **472-580**2X(22W-24W) **472-595**3X(26W-28W) **472-614**

reg. \$74.99

\$59.99

Celestial Spark Necklace and Earring Set sold on page 146.



Paired with whisper white 4-Pack Fall Tees sold on page 133.
Simple Ballet Flats sold on page 137.

FLARED LEG with zipper slits



soft wear

CARDIGAN with open front

TWO FRONT pockets

**NEW**❖ **Cozy Cardigan**

Smoke grey soft marled open-front cardigan with two front pockets. Polyester/spandex. Centre back length: 91 cm on M; 94 cm on 1X. Machine wash, line dry.

XS(0-2) **465-855**S(4-6) **465-874**M(8-10) **465-893**L(12-14) **465-908**XL(16) **465-931**1X(18W-20W) **465-965**2X(22W-24W) **466-043**3X(26W-28W) **466-593**

reg. \$80.99

\$63.99

Celestial Spark Necklace and Earring Set sold on page 146.



4-PACK SET

CLASSIC CREW NECK tee with front pocket

tees with ease

Contour Links Collection sold on page 146.



NEW

❖ 4-Pack Fall Tees

Includes mocha animal print, mocha, teal blue and whisper white classic crew neck tees with front chest pocket and short sleeves. Cotton/polyester. Centre back length: 64 cm on M; 69 cm on 1X. Machine wash and dry.

XS(0-2) 472-834	XL(16) 473-333
S(4-6) 473-003	1X(18W-20W) 473-348
M(8-10) 473-041	2X(22W-24W) 473-352
L(12-14) 473-238	3X(26W-28W) 473-371

reg. \$74.99

\$66.99 the pack

Celestial Spark Necklace and Earring Set sold on page 146.

one hit wonders

Look effortlessly chic with just one piece!

BOAT NECKLINE
plus side slits
and fabric
self-tie belt

NEW

❖ Boat Neck Dress

Heather grey dress with boat neckline, long sleeves and side slits. Fabric self-tie belt at waist. Cotton/polyester. Centre back length: 91 cm all sizes. Machine wash and dry.

XS(0-2) **473-405**

S(4-6) **473-477**

M(8-10) **473-534**

L(12-14) **473-568**

XL(16) **473-572**

1X(18W-20W) **473-663**

2X(22W-24W) **473-678**

3X(26W-28W) **473-682**

reg. \$96.99

\$74.99

Boho Wanderer Hoop Earrings and Semi-Precious Keepsake Locket sold on pages 144-145.



❖ Animal Print Dress

Animal print midi-length dress with collar, button front and long sleeves. Removable fabric self-tie belt at waist. Polyester/spandex. Centre back length: 123 cm on M; 126 cm on 1X. Machine wash, line dry, remove belt before washing.

XS(0-2) **264-340**

S(4-6) **264-355**

M(8-10) **264-360**

reg. \$74.99

\$59.99

Bold Chain Luxe Necklace, Rippled Flow Hoop Earrings and Goldtone Signet Ring Set sold on page 151.

L(12-14) **264-522**

XL(16) **264-609**

1X(18W-20W) **264-647**

2X(22W-24W) **264-670**

3X(26W-28W) **264-719**



❖ Drawstring Dress

Dusk blue V-neck dress with adjustable drawstring at waist. ¾-length sleeves with elastic cuff. Ladder lace trim at sleeve seam. 100% polyester. Centre back length: 98 cm on M; 99 cm on 1X. Machine wash, line dry.

XS(0-2) **103-180**

S(4-6) **103-209**

M(8-10) **103-251**

reg. \$74.99

\$59.99

Blue Moon Mosaic Collection sold on page 152.

L(12-14) **103-285**

XL(16) **103-395**

1X(18W-20W) **103-687**

2X(22W-24W) **103-759**

3X(26W-28W) **103-797**

timeless trench

❖ **Lightweight Trench Coat**
Black trench coat with front button closure and removable fabric self-tie belt at waist. Cherry coloured lining. Body and lining: polyester. Centre back length: 91 cm on all sizes. Machine wash, line dry, remove belt before washing.

XS(0-2) 264-738

S(4-6) 264-757

M(8-10) 264-780

L(12-14) 264-833

XL(16) 264-962

1X(18W-20W) 265-002

2X(22W-24W) 265-199

3X(26W-28W) 265-806

reg. \$96.99

\$74.99



❖ Tassel Clutch

Cherry faux leather, textured clutch with top zip closure and inside zip pocket. Side tassels, goldtone hardware and handle piece with functional snap closure (not removable). Man-made materials. Lining: polyester. 24 cm L x 11 cm W x 13 cm H. Handle drop: 11 cm L.

270-687

reg. \$63.99

\$48.99

Paired with the cherry tee sold on page 137.

APPAREL SIZE CHART (IN CM)

SIZE	BUST	WAIST	HIP
XS 0/2	77 - 81	60 - 64	83 - 86
S 4/6	85 - 89	67 - 71	90 - 94
M 8/10	93 - 97	75 - 79	98 - 102
L 12/14	100 - 104	83 - 86	105 - 109
XL 16	109 - 112	90 - 93	113 - 116
1X 18W/20W	118 - 123	99 - 104	122 - 127
2X 22W/24W	126 - 133	109 - 114	132 - 137
3X 26W/28W	138 - 144	119 - 124	142 - 147



❖ **2-Pack Long Sleeve Tee**
Ivory and cherry long sleeve tees with scoop neckline. Cotton/spandex. Centre back length: 58 cm on M; 64 cm on 1X. Machine wash and dry.

XS(0-2) 272-440

S(4-6) 273-098

M(8-10) 273-193

L(12-14) 273-576

XL(16) 275-636

1X(18W-20W) 277-457

2X(22W-24W) 278-578

3X(26W-28W) 278-654

reg. \$74.99

\$59.99 the pack



❖ **Simple Ballet Flat**
Black ballet flat with soft square toe and elastic bow. Padded insole and rubber outsole. Man-made materials. reg. \$54.99

\$41.99

6 105-034

7 105-144

8 105-398

9 105-417

10 105-436

11 105-675



A

Classic Jewel Drop Necklace
and Earring Set sold
on page 152.



B

Meadow Cluster
Earrings sold
on page 153.



C

Luminous Tides Link Collection
sold on page 148.

D

A. ♦ Smocked Blouse

Wine coloured blouse with front smocking, round neckline, short sleeves and scallop edge hem. Polyester/spandex. Centre back length: 65 cm on M; 67 cm on 1X. Machine wash, dry flat.

XS(0-2) 105-713	XL(16) 106-212
S(4-6) 105-728	1X(18W-20W) 106-380
M(8-10) 105-766	2X(22W-24W) 106-409
L(12-14) 105-770	3X(26W-28W) 106-413

reg. \$69.99
\$54.99

B. ♦ Textured Halter Top

Black pleated halter top with keyhole at back of neck. Scallop edge hem. 100% polyester. Centre back length: 62 cm on M; 67 cm on 1X. Machine wash, dry flat.

XS(0-2) 106-428	XL(16) 106-470
S(4-6) 106-432	1X(18W-20W) 106-504
M(8-10) 106-447	2X(22W-24W) 106-519
L(12-14) 106-451	3X(26W-28W) 106-580

reg. \$59.99
\$44.99

C. ♦ Roll-Sleeve Button-Down Top

Ivory satin button-down top with adjustable roll-tab sleeves. Polyester/spandex. Centre back length: 69 cm on M; 71 cm on 1X. Machine wash, line dry.

XS(0-2) 265-859	XL(16) 267-320
S(4-6) 265-863	1X(18W-20W) 268-293
M(8-10) 266-802	2X(22W-24W) 268-570
L(12-14) 267-244	3X(26W-28W) 268-585

reg. \$66.99
\$51.99

D. ♦ Faux Suede Belted Pant

Burnt sienna faux suede, pull-on pant with front pockets and removable fabric self-tie belt. Straight leg fit. Polyester/spandex. Inseam: 71 cm all sizes. Machine wash, line dry, remove belt before washing.

XS(0-2) 268-604	XL(16) 269-505
S(4-6) 268-700	1X(18W-20W) 269-510
M(8-10) 269-448	2X(22W-24W) 269-543
L(12-14) 269-471	3X(26W-28W) 269-581

reg. \$84.99
\$66.99



E

E. ♦ Lace Foot Covers

No-show stretch lace foot covers with gel grip around top. Light-weight fabric provides ventilation. Upper: nylon. Sole: cotton/spandex. One size. Black 106-595 Grey 106-600 reg. \$12.99

\$9.99 each pair



F

bring on the greys

F. ♦ Shadow Stripe Shirt

Smoke grey stripe satin shirt with collar, button front, rounded hem and long sleeves with buttoned cuff. Polyester/spandex. Centre back length: 69 cm on M; 71 cm on 1X. Machine wash, line dry.

XS(0-2) 103-945
S(4-6) 104-019
M(8-10) 104-038
L(12-14) 104-042
XL(16) 104-239

1X(18W-20W) 104-372
2X(22W-24W) 104-391
3X(26W-28W) 104-698

reg. \$66.99
\$51.99

G. ♦ Front Seam Pant

Smoke grey pull-on pants with side seam pockets and straight leg fit with front seam detail. Flat front waist has an elastic back. Rayon/nylon/spandex. Inseam: 74 cm all sizes. Machine wash, dry flat.

XS(0-2) 104-717
S(4-6) 104-740
M(8-10) 104-755
L(12-14) 104-831
XL(16) 104-870
1X(18W-20W) 104-884
2X(22W-24W) 104-956
3X(26W-28W) 105-020

reg. \$84.99
\$66.99

beach to street

A. ♦ Spring Jacket

Black zip-up jacket with side pockets. Ribbed trim at collar, cuffs and hem. Body: polyamide/spandex. Trim: cotton/spandex.

XS(0-2) 741-630 XL(16) 742-268
S(4-6) 741-993 1X(18W-20W) 742-359
M(8-10) 742-067 2X(22W-24W) 742-416
L(12-14) 742-249 3X(26W-28W) 742-488
reg. \$84.99

\$66.99

B. ♦ Printed Sarong

Multicolour print. Includes instruction card detailing multiple ways to wear. Rayon.

XS-XL (0-16) 760-312
1X-3X (18W-28W) 760-327
reg. \$59.99

\$44.99

C. ♦ 2-Pack Dresses

T-shirt dresses in turquoise and turquoise/white stripe. Round neckline and short sleeves. Solid colour dress: polyester/rayon/spandex. Striped dress: polyester/cotton/spandex.

XS(0-2) 884-803 XL(16) 885-298
S(4-6) 884-822 1X(18W-20W) 885-374
M(8-10) 884-841 2X(22W-24W) 885-389
L(12-14) 885-192 3X(26W-28W) 885-431
reg. \$74.99

\$59.99 the pack

D. ♦ Beach Tote

Orange nylon and mesh tote with top zip close, multiple outside slot pockets and inside zip pocket. Polyester. 759-441

reg. \$59.99

\$44.99

E. ♦ Roll-Up Sun Hat

Natural coloured braided roll-up hat. Bow detail at back with hook-and-loop closure. Roll-up design for easy storage/travel. Paper/polyester. One size. 759-460

reg. \$33.99

\$24.99



F. ♦ Flowy Lace Top

Purple overlay top with lining, lace trim at neckline and side ties. Body: rayon/polyester. Lining: polyester/rayon/spandex. Lace trim: polyester.

XS(0-2) 762-569 XL(16) 763-508
S(4-6) 762-721 1X(18W-20W) 763-512
M(8-10) 763-273 2X(22W-24W) 763-603
L(12-14) 763-364 3X(26W-28W) 763-713
reg. \$66.99

\$51.99

G. ♦ Tie-Front Button-Down Top

Red linen blend top with V-neck, button placket, front tie detail and bell shaped sleeves. Linen/rayon.

XS(0-2) 763-728 XL(16) 763-766
S(4-6) 763-732 1X(18W-20W) 763-770
M(8-10) 763-747 2X(22W-24W) 763-785
L(12-14) 763-751 3X(26W-28W) 763-790
reg. \$74.99

\$59.99

H. ♦ Floral Sleeveless Dress

Multicolour floral maxi dress has a halter-like look and self-tie fabric belt at waist. Back zipper and back button closure at neck. Body and lining: polyester.

XS(0-2) 761-209 XL(16) 761-380
S(4-6) 761-357 1X(18W-20W) 761-400
M(8-10) 761-361 2X(22W-24W) 761-414
L(12-14) 761-376 3X(26W-28W) 761-672
reg. \$93.99

\$72.99

I. ♦ Casual Pant

White lightweight pull-on pants with front pockets and flat front waist with elastic back. Rayon/lyocell.

XS(0-2) 761-730 XL(16) 761-983
S(4-6) 761-854 1X(18W-20W) 762-057
M(8-10) 761-964 2X(22W-24W) 762-186
L(12-14) 761-979 3X(26W-28W) 762-540
reg. \$74.99

\$59.99

J. ♦ Footbed Sandal

Natural coloured braided crisscross sandals with a raffia look. Adjustable back strap with buckle and molded footbed for comfort. Tread rubber outsole. Man-made materials.

6 760-331 9 760-752
7 760-399 10 760-810
8 760-403 11 760-843
reg. \$69.99

\$54.99



green & serene

A tranquil, grounding hue anchored by genuine jade.

semi-precious
jade pendant

ALL NEW

Verdant Luxe Beaded Collection
Shades of green glass beads and stones set in goldtone.

Layered Necklace

Semi-precious jade pendant, 10 x 14 mm. Chain 42 cm L with 9 cm extender; longest layer, 46 cm L. Pendant drop, 4 cm L. **477-491**
reg. \$36.99

\$29.99

Drop Earrings

CZ accents. 5 cm L. Pierced. **477-530**
reg. \$14.99

\$11.99

Ring

2 cm W. **6 477-597**
8 477-688
10 477-711
reg. \$18.99

\$14.99

Bracelet

19 cm L. **477-506**
reg. \$18.99

\$14.99

Gilded Filigree Necklace and Earring Set

Burnished filigree detail with golden and chocolate coloured stones. Goldtone chain, 42 cm L with 9 cm extender. Pendant drop, 3 cm L. Pierced drops, 3 cm L. **475-173**
reg. \$36.99

\$29.99 the set



necklace and earring set

timeless allure

Ornate filigree and burnished textural touches exude vintage-like glamour.



meaningful moments

Capture special memories with a semi-precious gemstone that speaks to you.

TIGER'S EYE
symbolizes empowerment
and inner strength

SODALITE
is associated with clarity,
truth and self-expression

AMETHYST
represents emotional balance,
understanding and patience

NEW

Semi-Precious Keepsake Locket
Semi-precious stone. Goldtone chain,
42 cm L with 9 cm extender. Pendant fits
2 cm L x 1 cm W photo.
Amethyst/Goldtone **477-119**
Tiger's Eye/Goldtone **476-658**
Sodalite/Silvertone **477-070**
reg. \$33.99
\$24.99 each

NEW

Boho Wanderer Collection
Antiqued silvertone with a mix
of textures and patterns.

Hoop Earrings
3 cm L. Pierced.
477-290
reg. \$18.99
\$14.99

Drop Earrings
Dangling accents.
4 cm L. Pierced.
477-324
reg. \$18.99
\$14.99



boho beauty

Antique look meets
contemporary chic!

Statement Necklace
Charms and mini faux
coin accents. 72 cm L with
9 cm extender.
477-176
reg. \$33.99
\$24.99

Coil Bracelet
Faux coin charms. One
size fits most.
477-233
reg. \$24.99
\$18.99

NEW

Contour Links Collection
SILVERTONE links with chain detailing.

Earring Set
Four hoops range from 1 to 2 cm L. Pierced.
477-487
reg. \$24.99
\$18.99 the set

Bracelet
18 cm L with 3 cm extender.
477-468
reg. \$18.99
\$14.99

Necklace
71 cm L with 9 cm extender. **477-453**
reg. \$29.99
\$21.99

set of 4 hoops

NEW

Celestial Spark Necklace and Earring Set
Garnet-like glass baguette stones with sparkling accents set in silvertone. Chain, 42 cm L with 9 cm extender. Pendant, 3 cm L. Pierced earrings, 1 cm L.
477-472
reg. \$29.99
\$21.99 the set

necklace and earring set

reach for the starburst

Blazing beauties alight with rich garnet-like shine.

here comes the sunflower

Bask in the warmth and radiant beauty of golden blooms.

Bloom and Glow Collection
Look of pearls and coloured glass beads with goldtone and accent stones.

Hoop Earrings
4 cm L. Pierced.
109-704
reg. \$18.99
\$14.99

Pearly Necklace
42 cm L with 9 cm extender. **109-541**
reg. \$24.99
\$18.99

Pearly Bracelet
18 cm L with 3 cm extender. **109-556**
reg. \$18.99
\$14.99

splashes of shimmer

Iridescent lustre inspired by the splendour of the sea.

Luminous Tides Link Collection
Goldtone links adorned with the look of abalone.

Necklace
52 cm L with 9 cm extender.
291-248
reg. \$33.99
\$24.99

Bracelet
18 cm L with 3 cm extender.
291-310
reg. \$18.99
\$14.99

Earrings
4 cm L. Pierced.
291-362
reg. \$18.99
\$14.99



3-bracelet sets

Wild Wisdom Collection
Goldtone pendants or charms with glass stone accents.

Pendant Necklace
Three removable pendants. 42 cm L with 9 cm extender.
291-415
reg. \$33.99
\$24.99

Bracelet Set
With coloured faceted glass, pearly and wood beads, plus tassel. Stretches to fit most.
Owl/Purple **292-010**
Elephant/Blue **291-745**
Fox/Green **291-750**
reg. \$29.99
\$21.99 each set

3 removable pendants to wear together or separately



sweet symbols

Take a shine to delightful creatures armed with charm.

Radiant Pavé Teardrop Set

Silvertone with pavé accented pendant. Chain, 42 cm L with 9 cm extender. Pendant, 3 cm L. Pierced drops, 4 cm L.
109-230
 reg. \$36.99

\$29.99 the set

Radiant Pavé Pearly Set

Goldtone with pavé accented pendant and pearly beads. Chain, 42 cm L with 9 cm extender. Pendant, 4 cm L. Pierced drops, 3 cm L.
109-470
 reg. \$36.99

\$29.99 the set

necklace and earring sets

Maple Leaf/
 Goldtone
109-135

Branch/
 Silvertone
109-101

Petal/
 Goldtone
109-140

Pearlescent Season Leaf Necklace
 Mother-of-pearl pendants with metal overlay.
 Chain, 42 cm L with 9 cm extender. Pendant, 3 cm L.
 reg. \$18.99

\$14.99 each

golden glamour

Make an impact in bold pieces with textured touches.

2-ring set

Rippled Heart Statement Earrings

Goldtone ribbed texture. 3 cm L. Pierced.
286-807
 reg. \$18.99
\$15.99

Eternal Loop Statement Earrings

Goldtone solid and textured finishes. 3 cm L. Pierced.
286-769
 reg. \$18.99
\$14.99

Bold Chain Luxe Necklace

Goldtone intertwined links. 42 cm L with 9 cm extender. **286-697**
 reg. \$36.99

\$29.99

Goldtone Signet Ring Set

Goldtone signet and twisted rope rings.
 6 **286-845**
 8 **286-850**
 10 **287-306**
 reg. \$18.99

\$14.99 the set

Rippled Flow Hoop Earrings

Goldtone ridged texture. 4 cm L. Pierced.
286-811
 reg. \$18.99
\$14.99

necklace and
earring set

Blue Modern Mosaic Collection
Glass faceted and coloured beads
with goldtone metal accents.

Necklace and Earring Set
Necklace, 84 cm L with 9 cm
extender. Pierced drops, 6 cm L.
109-169
reg. \$36.99

\$29.99 the set

Bracelet
Stretches to fit most.
109-192
reg. \$24.99
\$18.99

necklace and
earring set

**Classic Jewel Drop
Necklace and Earring Set**
Warm coloured stones and glass pearly
accents with goldtone. Necklace,
42 cm L with 9 cm extender; drop,
8 cm L. Pierced drops, 2 cm L.

110-044
reg. \$36.99
\$29.99 the set

Meadow Collection
Goldtone with soft tone
coloured stones.

Choker Necklace
Coiled beaded wire
chain; one size fits most.
109-829
reg. \$29.99

\$21.99

Cluster Earrings
Glass and resin stones.
5 cm L. Pierced.
110-006
reg. \$18.99

\$14.99

stunning
stones

Capture the timeless allure
of gem-like tones.

Crimson Aurora Collection
Crimson coloured beads with goldtone.

Multi-Row Beaded Necklace
Four-row necklace. 42 cm L with 9 cm extender. **109-010**
reg. \$48.99

\$36.99

Bead Hoop Earrings
Rounded cabochon style beads. 3 cm L. Pierced. **109-078**
reg. \$18.99

\$14.99

Multi-Row Beaded Bracelet Set
Set of four bracelets. Stretches to fit most. **109-025**
reg. \$24.99

\$18.99 the set

sultry and sophisticated

Load on the layers of this deep and passionate hue.



set of 4 bracelets



Scarlet Arc Statement Earrings
Goldtone with red curved stones. 3 cm L. Pierced. **109-082**
reg. \$24.99

\$18.99



Abstract Arc Statement Earrings
Goldtone bar with multicolour drops. 3 cm L. Pierced. **109-097**
reg. \$14.99

\$11.99

Sunset Lagoon 3-Piece Set
Multicolour beads with goldtone accents. Necklace, 61 cm L with 9 cm extender. Pierced drops, 6 cm L. Bracelet stretches to fit most. **286-682**
reg. \$36.99

\$29.99 the set

retro vibes

A cool, colourful and playful palette with fun flair.

necklace, earring and bracelet set



STERLING SILVER

Midnight Halo Watch

Black leatherlike strap, 23 cm L. Silvertone case with dial that has the look of abalone, 32 mm diam. Water-resistant to 3 ATM.

287-507
reg. \$59.99
\$44.99

Sterling Silver Marcasite and Abalone Collection

Genuine abalone inlay with genuine marcasite pavé accents set in .925 sterling silver.

Ring

2 cm W.
5 289-916
6 290-146
7 290-241
8 290-256
9 290-328
10 290-438
reg. \$87.99

\$74.99

Necklace

Chain, 43 cm L with 3 cm extender. Pendant, 4 cm L.

287-511
reg. \$87.99

\$74.99

Earrings

1 cm L. Pierced.
289-897
reg. \$87.99

\$74.99



genuine
abalone and
marcasite
accents

luxé and luminous

An interplay of shimmering shades evokes the mysteries of the ocean.

STAINLESS STEEL

Men's Stainless Steel Trailblazer Collection

Stainless steel with gold ion-plating. Ion plating is a process that enhances the durability and brightness of the gold finish, providing long lasting wear and a brilliant shine.

Compass Necklace

Chain, 56 cm L. Pendant, 4 cm L.

291-180
reg. \$36.99

\$29.99

Dog Tag Necklace

With black textured design and cz accent. Chain, 61 cm L. Pendant, 5 cm L.

290-442
reg. \$48.99

\$36.99

Ring

Golden rope texture design.
9 290-533 12 290-753
10 290-590 13 290-897
11 290-715
reg. \$36.99

\$33.99



Bracelet
Black leatherlike design. 23 cm L.
290-457
reg. \$48.99

\$44.99

cool contrasts

A striking combination of black leatherlike textures accented with golden shine.

**Marine Dream
Statement
Collection**
Goldtone
embellished
with turquoise
coloured
enamel,
rhinestones and
pearly beads.

Necklace
764-451
reg. \$59.99
\$44.99

Bracelet
764-470
reg. \$48.99
\$36.99

Earrings
764-485
reg. \$29.99
\$21.99

Beachside Woven Teardrop Earrings
Natural coloured raffia-like drops and
goldtone. Pierced. **764-447**
reg. \$24.99
\$18.99

Charm Medley Link Collection
Goldtone chain with charms.

Necklace
764-375
reg. \$29.99
\$21.99

Bracelet
764-380
reg. \$29.99
\$21.99



Coastal Spirit Collection
Sea theme charms.

Layered Necklace
Two-layer goldtone
necklace with
multicoloured beads.
764-394
reg. \$24.99
\$18.99

Bracelet
One size fits most.
Turtle/Silvertone
with the look of turquoise
764-432
Crab/Goldtone
with the look of howlite
764-409
reg. \$18.99
\$14.99 each



Turquoise Tides Collection
Semi-precious or reconstituted turquoise stones with pearly accents set in goldtone.



necklace and earring set

Ring
6 764-815
8 765-185
10 765-190
reg. \$18.99
\$14.99

Statement Earrings
Reconstituted turquoise stones. Pierced.
764-724
reg. \$24.99
\$18.99

Linear Earrings
Reconstituted turquoise stones. Pierced.
764-710
reg. \$18.99
\$14.99

Necklace and Earring Set
Semi-precious turquoise pendant. Pierced drops.
764-705
reg. \$33.99
\$24.99 the set

Pearly Ocean Links Collection
Pearly accents and goldtone.

Necklace and Earring Set
Pierced drops. 764-490
reg. \$33.99
\$24.99 the set

Bracelet
764-504
reg. \$24.99
\$18.99



necklace and earring set

Pop and Shine Hoop Earrings
Coloured enamel set in goldtone. Pierced.
Blue 764-519
Red 764-557
Yellow 764-523
reg. \$18.99
\$14.99 each



STAINLESS STEEL

Men's Stainless Steel Golden Faith Collection

Stainless steel with gold ion-plated accents, excluding watch. Ion plating is a process that enhances the durability and brightness of the gold finish, providing long lasting wear and brilliant shine.



Golden Edge Watch
Stainless steel with goldtone plating. 40 mm diam. case. Water-resistant to 3 ATM. 765-219
reg. \$74.99
\$59.99



Ring
9 765-864
10 766-196
11 766-234
12 766-272
13 766-330
reg. \$44.99
\$33.99

Dog Tag Necklace
765-826
reg. \$48.99
\$36.99

Chain Bracelet
765-850
reg. \$48.99
\$36.99



RIB TRIM on collar and sleeves



❖ **Men's Polo Shirt**
Classic polo shirt with short sleeves and two button placket. Rib trim on sleeves and collar. Cotton.
reg. \$48.99
\$36.99 each

Grey	Navy
S 765-587	S 765-390
M 765-610	M 765-405
L 765-663	L 765-439
XL 765-678	XL 765-443
XXL 765-754	XXL 765-740



NEW

Warm Autumn Collection

Warm tone and goldtone beads with a white leatherlike braided cord.

Statement Earrings

Burgundy bead accent. 4 cm L. Pierced.

475-120
reg. \$24.99

\$18.99

Beaded Necklace

52 cm L with 9 cm extender.

474-602
reg. \$33.99

\$24.99

Beaded Bracelet

Stretches to fit most.

475-097
reg. \$24.99

\$18.99

signs of the season

Warm and earthy tones inspired by fall's rich palette, plus sweet symbols and sets.

JEWELRY

necklace and earring sets

ALL NEW

Pumpkin Patch Necklace and Earring Set

Pumpkin and amber hued glass beads with goldtone accents.

Chain, 42 cm L with 9 cm extender.

Pendant, 3 cm L.

Pierced drops, 1 cm L.

477-726

reg. \$24.99

\$18.99 the set

Falling Leaves Necklace and Earring Set

Clusters of red and green glass beads set in goldtone. Chain, 76 cm L with 9 cm extender.

Pendant, 3 cm L.

Pierced drops, 8 cm L.

477-817

reg. \$33.99

\$24.99 the set

THE WOW DEAL

**4-PIECE SET
ONLY \$55.99**

\$185 VALUE
491-230

Far Away Bali Eau de Parfum
50 ml

Anew Platinum Eye & Lip Cream
Dual applicator. 15 g

Anew Platinum Age Delay Serum
30 ml

Isa Knox LXNEW Clean
Nourishing Cream Cleanser
150 ml

LOOK AND FEEL REFRESHED FOR SUMMER. DRIFT AWAY TO YOUR DREAM DESTINATION WITH A FRUITY FLORAL FRAGRANCE. KEEP SKIN MOISTURIZED WITH A CREAM CLEANSER AND REJUVENATE YOUR LOOK WITH A SERUM. EYES AND LIPS NEED TLC TOO.



© 2025 The Avon Company Canada Limited. All rights reserved.

CAMPAIGN 17, 2025

5500 TRANS-CANADA HWY.
POINTE CLAIRE, QUEBEC
H9R 1B6

1-800-265-2866

avon.ca



8 88761 73150 6

Pk of 10 4766251



8 88761 73152 0

Single 4766271

Brochure effective until



See our commitment at
[avon.ca](https://www.avon.ca) > Policies > Animal Welfare Policy

RETURN POLICY If you are not satisfied, return any item within 45 days. View Avon's full 45-Day Return Policy at [avon.ca](https://www.avon.ca) > Support > Return Policy.