

AVON

CAMPAIGN 20
AVON.CA

**NEW fmg
Cashmere Cushion
Foundation**

+ FREE GIFT
(with qualifying purchase)



LUXURY

IN THE SHADE OF YOU

your guide to a flawless face

Get gorgeous with cashmere soft skin, sultry eyes and luxe lips. All you need are these makeup musts and the right tools! We'll show you how!



Isa Knox LXNEW Clinical Booster Moisture Lock

This powerhouse formula delivers instant hydration that lasts for 72 hours and protects the moisture barrier for a visibly soft, supple complexion. 30 ml

FREE

with every 40.00 purchase, pages 4-13.

56.00 REG. VALUE

In case of unforeseen demand, Avon reserves the right to substitute a free product with that of equal or greater value.



apply yourself

After daily skin care outline and primer, use sponge puff applicator and press into cushion to pick up foundation. Then pat onto centre of face and blend outward to perfect.



FREE Isa Knox LXNEW Clinical Booster Moisture Lock
see details page 2

SOFT AS CASHMERE

NEW

Nourishing and exquisite, indulge in the luxury of Cashmere Cushion Foundation.



NEW

fmg Cashmere Cushion Foundation

Enriched with soothing calendula extract, moisturizing squalane and skin-brightening niacinamide. Lightweight, breathable formula applies evenly, helping to cover the look of imperfections with buildable velvety soft-matte colour. Light-to-medium coverage. Includes sponge puff applicator. Free from parabens, phthalates and fragrance. 12 g reg. 39.00

36.00

- | | | |
|-------------------------|---------------------------|---------------------------|
| Cannoli (W) 223-323-7 | Nougat (W) 223-323-8 | Meringue (W) 223-323-9 |
| Shortcake (C) 223-324-0 | Buttercream (N) 223-324-1 | Marshmallow (N) 223-324-2 |
| Custard (N) 223-324-3 | Strudel (C) 223-324-4 | Macadamia (W) 223-324-6 |
| Ganache (WO) 223-324-8 | Coconut (W) 223-324-5 | Cappuccino (N) 223-324-9 |
| Chai (WO) 223-324-7 | Vanilla (W) 223-325-4 | Toasty (N) 223-325-1 |
| Praline (N) 223-325-3 | Tiramisu (W) 223-325-0 | Soufflé (N) 223-325-2 |
| Muffin (W) 223-325-5 | Gingerbread (C) 223-325-6 | Pudding (N) 223-325-7 |
| Amaretto (N) 223-325-8 | Latte (W) 223-326-0 | Brownie (WO) 223-325-9 |
| Hazelnut (W) 223-326-1 | Cognac (W) 223-326-2 | Java (W) 223-326-4 |
| Pecan (N) 223-326-3 | Clove (N) 223-326-5 | Truffle (C) 223-326-6 |

fmg Cashmere 24 Hour Foundation
 24 hours of comfortable, breathable wear. Full, flexible coverage. Soft-focus matte finish. Visibly blurs pores and fine lines for a smoother complexion. Water-resistant. Vegan. 30 ml
 reg. 45.00
35.00

Good Housekeeping Magazine 2021 Beauty Award Winner.



FLAWLESS
 LOOKS GOOD ON YOU

fmg Kabuki Brush
 9 cm L x 3 cm diam.
 223-424-7
 reg. 24.00
18.99

fmg Cashmere Compact Powder Foundation
 2-in-1 powder can be worn wet or dry. Buildable medium-to-full coverage. Soft-focus matte finish. Includes mirror compact and sponge.
 9.5 g
 reg. 52.00
42.00



- | | |
|--------------------|--------------------|
| N110 (N) 222-137-5 | W110 (W) 222-137-6 |
| W120 (W) 222-137-7 | C110 (C) 222-137-8 |
| N120 (N) 222-137-9 | W130 (W) 222-138-0 |
| W140 (W) 222-138-2 | W150 (W) 222-138-1 |
| W160 (W) 222-138-3 | N130 (N) 222-138-4 |
| N140 (N) 222-138-5 | W170 (W) 222-138-6 |
| N150 (N) 222-138-7 | W180 (W) 222-138-8 |
| N160 (N) 222-138-9 | C120 (C) 222-139-0 |

apply yourself

Apply foundation in your shade and blend with the Complexion Blending Brush. With the Blush & Contour Brush, apply foundation two shades darker under cheeks to contour. Give a quick sweep of Cashmere Powder with the Kabuki Brush to set.



fmg Complexion Blending Brush
 17 cm L. 224-615-6
 reg. 31.00
24.99

fmg Blush & Contour Brush
 18 cm L. 224-615-8
 reg. 30.00
23.99



FREE Isa Knox LXNEW Clinical Booster Moisture Lock details page 2

fmg Cashmere 24 Hour Concealer
 24 hours of comfortable wear. Full coverage. Soft-focus matte finish. Visibly corrects dark circles and imperfections. With antioxidant botanical extracts. Water-resistant. 6 ml
 reg. 31.00
23.00

Available in Cool (C), Neutral (N), Warm (W) and Warm Olive (WO) undertones. Packaging may vary.

-  Sugar (W) 223-391-1
-  Mochi (N) 223-391-2
-  Cheesecake (C) 223-391-3
-  Parfait (W) 223-391-4
-  Macaroon (N) 223-391-5
-  Tart (WO) 223-391-6
-  Butterscotch (W) 223-391-7
-  Waffle (W) 223-391-8
-  Biscuit (WO) 223-391-9
-  Tres Leches (N) 223-392-0
-  Toffee (W) 223-392-1
-  Cupcake (N) 223-392-2

-  Blonde 225-088-8
-  Light Brown 225-088-7
-  Brown 225-088-6
-  Ash Brown 225-088-3
-  Dark Brown 225-088-5
-  Black Brown 225-088-4

fmg Cashmere 24 Hour Brow Pomade
 Ultra-creamy, weightless pomade fills in brows as it boosts colour. Smudge-proof, sweat-proof formula. Matte finish. Dual-ended applicator with angled-tip brush and spoolie. Applicator, 11 cm L. 4 g
 reg. 35.00
28.00

Model is wearing Brow Pomade in Brown and Concealer in Butterscotch.

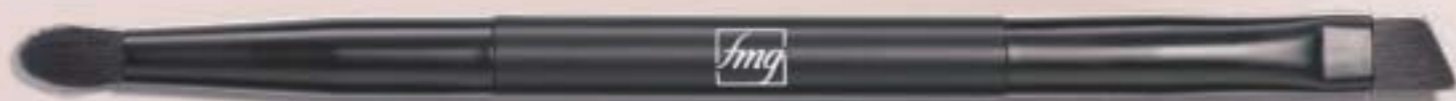


BROW LIFT

apply yourself

Apply your shade of Cashmere 24 Hour Brow Pomade with angle end of the Precision Eye Brush. Dot Cashmere 24 Hour Concealer under the brow. Blend using the pointed pencil brush end of the Precision Eye Brush.

fmg Precision Eye Brush
 13 cm L. 224-615-5
 reg. 21.00
15.99



FREE Isa Knox LXNEW Clinical Booster Moisture Lock
 details page 2



fmg
Eyeshadow
Blending
Brush
 15 cm L.
224-615-9
 reg. 21.00
15.99

SMOOTH + SMOKY

apply yourself

Sweep a neutral eyeshadow over the lid, a lighter shade in the inner corner and then the darkest shade in the outer corner with the Eyeshadow Blending Brush. Apply eyeliner and smudge. Finish with mascara.

Model is wearing Eyeshadow Palette in Enchanted Eyes, Eyeliner in After Dark and Mascara in Rich Black.

fmg Cashmere Ultimate Volume Mascara

Creates full, lush lashes that last. Unique triple sphere brush hugs lashes for panoramic volume. With lash-loving biotin and collagen. Won't budge, smudge or transfer, but removes easily. Vegan.

Cruelty-free. 8 ml
Rich Black
224-700-0
 reg. 32.00
26.00

Enchanted Eyes
 223-066-1

fmg Cashmere Eyeshadow Palette

9-shade palettes to create an array of looks. Long-wearing creamy powder shadows in satin, matte and sparkling finishes. Crease- and smudge-proof wear. Vegan.

Talc/paraben/fragrance-free.
 18 g total.
 reg. 58.00
48.00

Essential Eyes
 223-066-0



fmg Cashmere 24 Hour Cream Eyeliner

Intense decadent black shades with dazzling jewel undertones for dramatic results. Comfortable kohl formula with 24-hour wear. Waterproof, matte finish. Smudge applicator to blend. Vegan. Paraben/phthalate/fragrance-free. 1.31 g

reg. 26.00
22.00



FREE Isa Knox LXNEW Clinical Booster Moisture Lock
 details page 2

-  Day Dreamer
222-947-0
-  Cozy Rosy
222-946-6
-  Honey Mandarin
222-946-2
-  Pink Lady
222-946-5
-  Plush Peony
222-946-1
-  Coral Charm
222-946-4
-  Cheeky Red
222-946-9
-  Cherry Rush
222-946-3
-  Chic Cocoa
222-946-7
-  **TOP-SELLER** 
Summer Berry
222-946-8

**fmg Cashmere
Essence Lipcream**
Plant-based Bio-Retinol, known for effective anti-aging properties without the harsh irritation, improves lip hydration and protection. High-shine finish. 3 g reg. 32.00
26.00

apply yourself

Lavish your lips. Sweep on vivid lip colour and let dry. Then turn up the shine with the clear lacquer top coat.

Good Housekeeping Magazine 2022 Beauty Award Winner.



-  Beautifully Bare
224-731-7
-  Pinkfection
224-732-1
-  Stunning Scarlet
224-731-9
-  Mauvelous
224-731-6
-  Ravishing Rose
224-731-8
-  Berry Bliss
224-732-0

NEW

**fmg Cashmere
Rouge Lacquer**
Dual-ended. Ultra-pigmented lip colour and brilliant clear lacquer deliver high-performance wear throughout the day. Full-coverage colour dries quickly without feathering. Moisturizing top coat locks colour in place for a high-shine finish that keeps lips looking beautiful and feeling comfortable for hours. Transfer-, smudge- and feather-proof. Vegan. Free from parabens. 5.6 g total weight.
reg. 32.00
26.00

Model is wearing Matte Lipcream in Rich Berry and Essence Lipcream in Honey Mandarin.

-  True Red
(S) 222-519-8
(M) 222-432-8
-  Soft Crimson
(S) 222-519-7
(M) 222-432-7
-  **TOP-SELLER** 
Rich Berry
(S) 222-519-6
(M) 222-432-6
-  Dark Cherry
(S) 222-519-5
(M) 222-432-5
-  Soft Mauve
(S) 222-519-4
(M) 222-432-4
-  Nude Blush
(S) 222-519-3
(M) 222-432-3
-  Nude Beige
(S) 222-519-2
(M) 222-432-2
-  **TOP-SELLER** 
Nude Rose
(S) 222-519-0
(M) 222-432-0
-  Nude Pink
(S) 222-519-1
(M) 222-432-1

**fmg Cashmere
Lipcream**
Infused with antioxidant vitamins C and E, shea butter, avocado, and coconut oils to nourish and soften lips.
Satin finish (S)
in traditional case and **matte finish (M)** in chic slimline case.
Each, 3.5 g
reg. 32.00
26.00 each



Nude Rose

COLOR MEETS SHINE



FREE Isa Knox LXNEW Clinical Booster Moisture Lock
details page 2



THIS FALL SEASON

SEE SKIN REJUVENATED

Specially formulated to visibly diminish wrinkles and improve the appearance of skin texture, tone and clarity for a rejuvenated look beyond the ultimate.

With **nutmeg** to help visibly diminish discolourations and even skin tone, and calm and soothe skin

things to love

- Infused with paeonol extract derived from rare peonies
- Visibly reduces wrinkles
- 9 out of 10 women said it made their skin look and feel dramatically smoother*
- 9 out of 10 women said it makes skin look and feel firmer*



ISA KNOX ANEW LX ULTIMATE Rejuvenating Day Cream

This multi-purpose paeonol-infused day cream visibly reduces the look of wrinkles and improves elasticity, radiance and skin texture. 50 ml
224-488-670.00 or...

ONLY 29.99
WITH EVERY 20.00 PURCHASE FROM THIS BROCHURE
(excluding page 15)



THIS FALL SEASON

ELEVATE YOUR SPACE

Make your home gather-ready and welcoming with new unique fine fragrance candles crafted by expert perfumers.

Snickerdoodle

Family baking time! The buttery sweet aroma of Christmas cookies fill the air with notes of cinnamon, almond and vanilla. **224-613-7**

Pumpkin Pie

Decadent pumpkin, sweet cinnamon sugar and vanilla create a comforting and delectable delight for the senses. **225-122-3**

Fir Balsam Fireplace

Addictive, crisp winter scent that captures warm holiday memories of pine cones and balsam with notes of pistachio and caramel for a touch of seasonal sweetness. **224-613-1**

Spicy Hot Toddy

Soothe your seasonal soul. Snuggle up this winter and relax by a crackling fire with a holiday hot toddy and notes of caramel, ginger and vanilla cream. **225-131-7**



Rose Blossom & Musk

Pink peony, sophisticated rose blossom and soft musk. **222-910-2**



Juicy Currant & Magnolia

Juicy currant, sweet rhubarb and blooming magnolia. **222-910-1**



Peony & Cedar

Fresh eucalyptus, enchanting peony and white cedar. **222-951-3**



Violet & Birch

Delicate violet, crisp birch and warm vanilla. **222-910-3**

NEW limited edition



things to love

- soy-blend candles for a cleaner burn
- gives 30 hours of burn time
- 3-wick candle

❖ LYRD Candle

11 cm diam. x 8 cm H. Glass jar/paper dust cover/soy-blend wax. reg. 35.00

SPECIAL
28.00 EACH



THIS FALL SEASON

GET THIS LOOK FLAWLESS FLUTTER

Heart-shaped, lash-hugging fibres provide instant length and weightless volume in just one application.

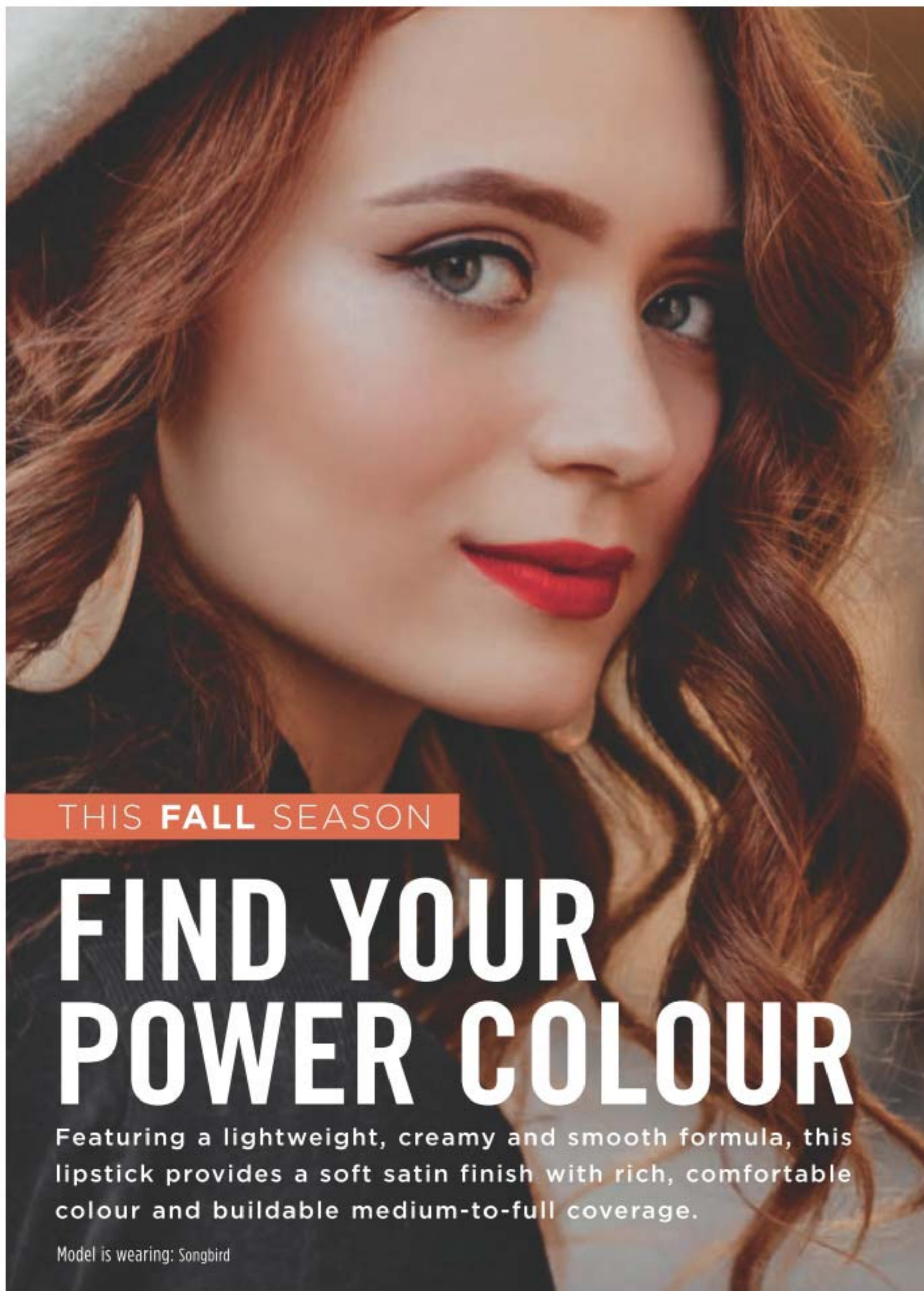
things to love

- Vitamins A, C and E condition lashes
- Olive oil and lycopene strengthens lashes
- Ophthalmologist-tested
- Smudge-free, clump-free and won't flake off
- Paraben-free, sulfate-free, talc-free
- Vegan



**Avon True Color
Love at 1st Lash Mascara**
With lash-conditioning Love Complex™, and black pigments for a clump-free intense finish. Safe for contact lens wearers. 9 ml
Blackest Black 220-247-9
reg. 23.00

**LIMITED
TIME OFFER
12.99**



THIS FALL SEASON

FIND YOUR POWER COLOUR

Featuring a lightweight, creamy and smooth formula, this lipstick provides a soft satin finish with rich, comfortable colour and buildable medium-to-full coverage.

Model is wearing: Songbird

 Thunder 222-949-2	 Nova 222-949-1	 Morning Glory 224-850-1	 Celestial 222-948-0	 Violet Night 222-949-0	 Fog 222-947-5	 Cyclone 222-947-6	 Twilight 224-850-5	 Equinox 224-850-4	
 Desert Moon 224-850-3	 Thunderbird 222-947-9	 Sierra Sunset 222-947-7	 Luna 222-947-8	 Earth Angel 222-947-4	 Windstorm 222-947-3	 Blaze 222-948-3	 Firebolt 222-948-2	 Poppy 222-948-5	
 Songbird 222-948-4	 TOP-SELLER Aster 224-849-7	 Constellation (Shimmer) 224-850-0	 Tulip 224-849-9	 Wild Cherry 224-849-8	 Eclipse 224-849-6	 Whirlwind 222-948-1	 TOP-SELLER Wildrose 222-948-9	 TOP-SELLER Plum Blossom 224-850-2	
 Hibiscus 222-948-7	 Wildflower 222-948-8	 TOP-SELLER Rose Angel 222-948-6							



Luna

**fmg Glimmer
Satin Lipstick**
3 g
16.00 or...

things to love

- An enticing and inspiring spectrum of 30 versatile and expressive shades
- Lightweight, smooth and creamy formula
- With pomegranate extract for antioxidant benefits

**CHOOSE
ANY 2 FOR
22.00**

PAGES 20-21

To get the 2 FOR price,
please order in multiples of 2.

take your brow game to **NEW HEIGHTS!**



Model is wearing Brown.



Spoolie grooms brows to perfection

NEW

fmg CathyCat High Arch Precision Brow Pencil

Long-wearing cream-to-powder pencil glides on smoothly, creating a well-defined look. Waterproof formula stays in place without budging or smudging for perfectly gorgeous brows. 0.5 g

21.99 or...










ONLY 7.99
WITH EVERY 10.00 PURCHASE FROM THIS BROCHURE
(excluding pages 22-23)

- 
Blonde
223-415-9
- 
Light Brown
223-416-0
- 
Brown
223-416-1
- 
Ash Brown
223-416-3
- 
Dark Brown
223-416-2
- 
Black Brown
223-416-4

GLIMMER UP!



EYELINER DIAMOND

					
Olive 223-258-2	Sterling 223-258-3	Black Ice 223-258-0	Brown Sugar 223-257-8	Sugar Plum 223-258-1	Purple Rain 223-258-4
					
Twilight Sparkle 223-257-7	Teal Sparkle 223-257-9	Smoky Diamond 223-257-6			

EYELINER WATERPROOF

						
Smoky Grey 223-252-7	Blackest Night 223-252-5	Midnight Blue 223-252-6	Brown Chocolate 223-252-4	Seafoam Green 223-253-0	Blue Skies 223-252-9	Raisin 223-252-8

EYELINER CREAM

					
Cosmic Brown 223-258-9	Majestic Plum 223-258-5	Starry Night 223-258-8	Emerald Green 223-258-7	Saturn Grey 223-258-6	Blackest Black 223-259-0

BROW DEFINER

					
Tawny 223-412-8	Light Blonde 223-412-6	Blonde 223-412-7	Light Brown 223-413-0	Dark Brown 223-412-9	Brunette 223-413-1

LIPLINER

					
Honey Peach 223-255-4	Lava Red 223-255-5	Candy Apple 223-255-6	Passion Red 223-255-3	Red Brick 223-256-0	Au Naturel 223-255-8
					
Simply Spice 223-256-2	Merlot 223-255-7	Perfect Plum 223-256-4	Pink Bouquet 223-255-9	Chocolate 223-256-3	Mystery Mauve 223-256-1

Long-wearing retractable liners for eyes, brows and lips.

fmg Glimmer Eyeliner
Define eyes perfectly. Rich pigments provide vivid, opaque colour laydown. Fade-resistant. 0.28 g

fmg Glimmer Brow Definer
Waterproof formula infused with nourishing castor oil, aiding in hair growth and with coconut oil, leaving brows feeling soft and smooth. Smudge/transfer/sweat-proof. 0.28 g

fmg Glimmer Lipliner
Super-precise application for high-definition, sculpted lips. Prevents feathering and extends the wear of lip colour. Fade-resistant. Matte finish. 0.28 g

13.00 each or...

CHOOSE ANY 3 FOR 10.99

PAGES 24-25

To get the 3 FOR price, please order in multiples of 3.



Mirrored compact for on-the-go touch-ups

Colour-coordinated shades work together to enhance eyes for your most expressive looks yet.

fmg Glimmer Eyeshadow Quad
Perfectly pigmented shadows in matte and shimmer finishes. Creamy soft powder formula hugs lids with rich colour for all-day wear, without the fallout. Buildable, medium-to-full coverage. 6 g total.
reg. 20.00
16.99

fmg Glimmer Longwear Gel Eyeliner
Richly pigmented formula dries to an intense matte finish. Use as an eyeshadow base to amp up overlaying colours. Full, opaque coverage. Smudge-, flake-proof. Fade-resistant. 6 g
reg. 18.00
14.99

4 MATTE EYELINER SHADES



SWIPE GLIMMER DONE

4 SHIMMER EYESHADOW SHADES



fmg Glimmer Longwear Gel Eyeshadow
Long-wearing, creamy weightless formula with delicate pearls that capture and reflect light. Seamless, buildable coverage, never looks heavy or cakey. Crease- and smudge-proof. Fade-resistant. 6 g
reg. 18.00
14.99

FREE

Mattitude Soft Matte Liquid Lip
Persistent
19.00 value
with every 2 purchases from pages 26-27



In case of unforeseen demand, Avon reserves the right to substitute the free product with one of equal or greater value.



Anew Clinical Unlimited Lashes & Brow Activating Serum*
84% of women agreed lashes look longer and fuller after 8 weeks of use.**
Use PM. 3 ml
220-342-0
reg. 84.00
39.99



Waterproof formula.
Wash-Off Waterproof Mascara
Washes off with soap and water. 6 g
Black 100-388
reg. 14.00
11.49



Waterproof formula.
Love at 1st Lash Waterproof Mascara
8.5 ml
Black 222-014-9
reg. 23.00
16.99



Big & bold volumizing
Avon True Color Super Shock Volumizing Mascara
10 ml
Black 110-323-2
reg. 16.00
12.99



Long and healthy.
Avon True Color Super Extend Nourishing Mascara
With argan and coconut oil. 7 ml
Black 113-543-7
Brown Black 113-543-8
reg. 16.00
12.99

CATHYCAT

Create eyes that captivate

- Long-wearing
- Nourishing formulas with a blend of conditioning coconut and argan oils and lash-supporting panthenol

Lengthen, curl & captivate!

fmg CathyCat Curl & Flare Mascara
Long-lasting mascara applies evenly. Uniquely curved brush provides major lift, extraordinary curl and impressive length. 8 g
Blackest Black 224-774-1
reg. 23.99
19.99

Chubby curved brush for doe-eyed lashes

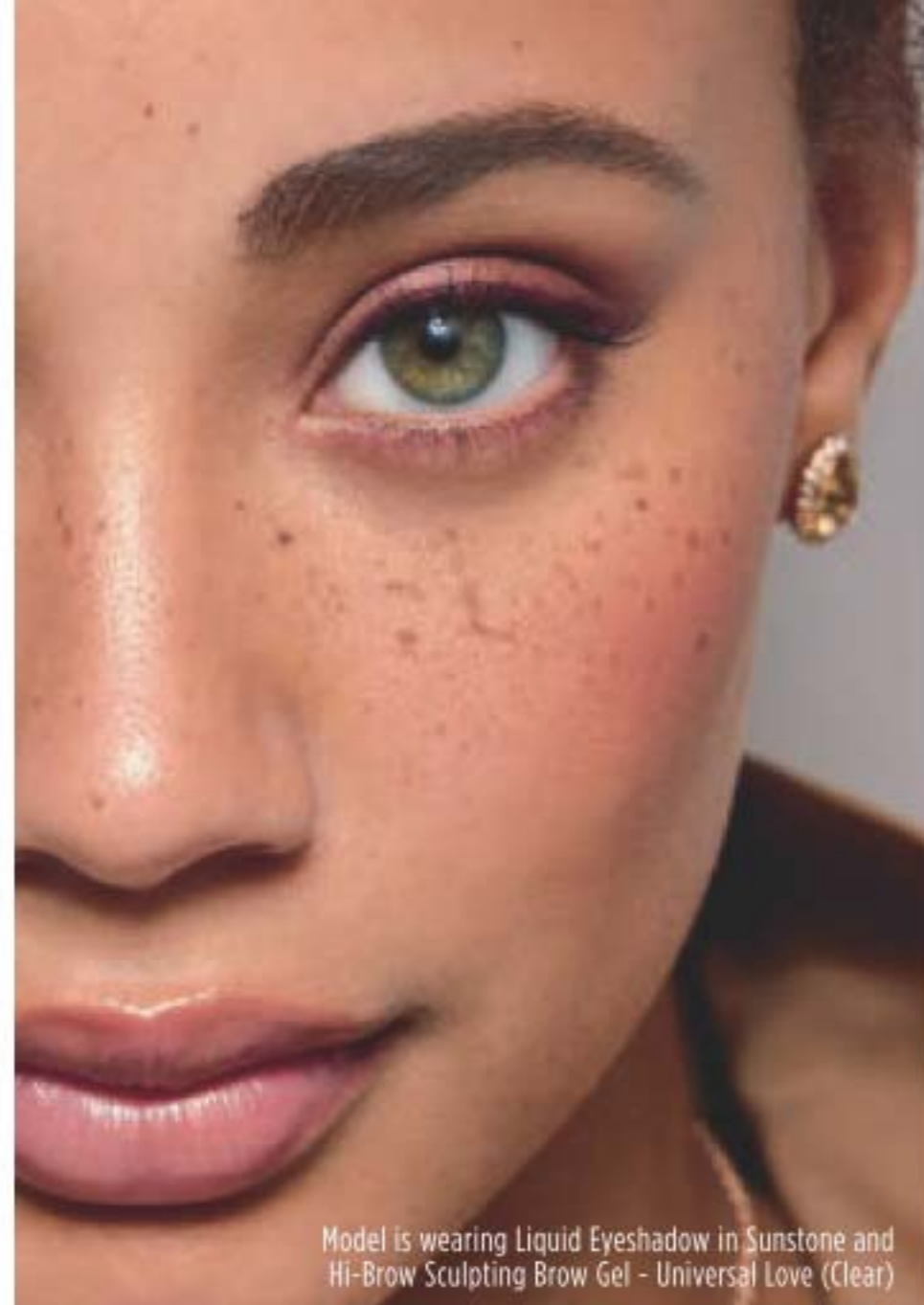


No budge, water resistant lashes, from dawn to dusk.

fmg CathyCat Play All Day Mascara
Long-wearing mascara coats each lash with rich pigments that will not budge or smudge for nine lives of perfect wear. Removes easily with soap and water. 8 g
Blackest Black 224-780-2
reg. 23.99
19.99

Straight-round brush fans out lashes

*Anew Clinical Unlimited Lashes is not intended to reverse or reduce hair loss or grow hair. **Based on an 8-week consumer-perception study.



Model is wearing Liquid Eyeshadow in Sunstone and Hi-Brow Sculpting Brow Gel - Universal Love (Clear)

BROWS

Get wow-worthy brows!

BROW BAR STAR

Clear sculpting gel tames, fluffs, shapes and grooms



Amp up brows with a sweep of tinted gel for a full, fluffy look.

fmg Colors of LOVE Hi-Brow Tinted Brow Gel

Water/resistant/smudge flake-proof formula fills, grooms and shapes for 24 hour wear. With clay and vitamin E. Soft matte finish. 3.3 ml
reg. 24.00
18.99

Universal clear shade for a professional sculpted look.

fmg Colors of LOVE Hi-Brow Sculpting Brow Gel

With moisturizing aloe and nourishing hyaluronic acid. Soft matte finish. Parabens/phthalates/fragrance-free 3.3 ml
reg. 24.00
18.99



MAKEUP



Glittery wow EYES

Vivid sparkling colour for eyes, available in 3 ultrafine pearl finishes: Matte Sateen, Glitter or Shimmer

fmg Glimmershadow Liquid Eyeshadow

Buildable silky cream formula glides on effortlessly for a soft, subtle sheen that lasts all day. Water-resistant. Crease/smudge-proof. Paraben/phthalate/sulfate-free. 2 ml
reg. 17.00
11.49

Package labels may vary.



Dual-ended brush

Grooms brows for a polished look.

3-in-1 Brow Brush
Polystyrene/polypropylene/PBT. 13 cm L.
224-986-1
reg. 13.00
7.99
limited quantities



Set of 2 razors

Trim with ease.
Daily Beauty Tools Eyebrow Trimmers
Stainless steel blade trims fine hairs with precision. Great for shaping arches. ABS/stainless steel. Includes caps. Each, 13 cm L.
223-877-9
3.99 the set
limited quantities

Angled for precision



Get every fine hair!
Daily Beauty Tools Tweezers
Amp up your beauty routine with angled tweezers. Stainless steel. 9 cm L.
224-612-4
reg. 6.00
4.99



Quick-dry precision felt tip liner

Blackest Black
223-883-9

fmg Glimmer Liquid Eyeliner
Easy-glide, quick-dry precision felt-tip liner delivers rich colour with long-lasting wear. Matte finish. Transfer/sweat/waterproof. 1.1 ml
reg. 18.00
14.99

READY FOR TAKEOFF

Turn makeup removal into a moisturizing skin-soothing ritual.



MAKEUP



Avon True Color Moisturizing Eye Makeup Remover Lotion
Works quickly and easily to gently remove all traces of eye makeup. Plus, it conditions and moisturizes your lashes and the fragile skin around your eyes! Lightweight, water-based, formula. 80 ml
109-574-9
12.00 each or...

2 FOR 9.99

To get the 2 FOR price, please order in multiples of 2.

TPSY

A drop of glow!

TPSY I Want to Highlight You Liquid Highlighter

Use as a gloss primer and highlighter, or mix into your makeup to customize your shine! Solar Glow Highlighting Complex formula with moisturizing ingredients and ultrafine pearls for a subtle dewy finish.

30 ml
reg. 30.00
25.00



Glow
224-859-7



Glow

Gloss? Balm?
Even better!

TPSY Shiny Lip Oil

A deeply moisturizing lip oil that is instantly absorbed with a tint of colour and matches every lip. No hassle. No residue. No stickiness. Infused with jojoba, argan and castor oil. Vegan. Earth friendly packaging. Use alone or over your fave Forever Lip Marker. 3.7 g

reg. 22.00
18.00



Love Galore
224-859-8



DO THINGS COLOURFUL

Be yourself... be spontaneous, live it up!
Because **life should be anything but routine.**

MAKEUP



Felt Pink
224-860-0

Sour Candy
224-860-1

Crazy Rabbit
224-860-2

Orangeyred
224-860-3

Blackberrybite
224-860-4

Get kiss-ready with the perfect partner.

TPSY Forever Lip Marker

Hydrating formula that stays on lips all day. Unique marker design allows for easy application and a vibrant, juicy look. Kiss-proof. 2.5 ml
reg. 22.00
18.00



Model is wearing fmg Glimmer Lip Glaze in Sheen.

your prep steps for a PERFECT POUT

Get your lips ready for prime time!



plump
With hydrating castor seed oil and antioxidant vitamin E.
fmg Glimmer Lip Plumper
Non-sticky. No stinging or burning, just fuller lips! Shiny gloss finish gives hours of wear without feathering. Universally flattering, brilliant shade. Refreshing peppermint scent. 9 ml
Brilliance 223-379-9
reg. 17.00
13.99



gloss
Glossy radiance in shimmery colours.
fmg Glimmer Lip Glaze
Smooth, lip-hugging texture gives hours of wear without feathering. Non-sticky creamy formula with antioxidant vitamin E. Buildable sheer to medium coverage with lustrous glossy finish. 9 ml
reg. 16.00
12.99



polish
Blend of vitamin E, moisturizing squalane, and extracts of blueberry, strawberry and raspberry.
fmg Glimmer Lip Polish
Sugar-based formula helps polish and prepare lips for effortless lip colour application. Leaves lips feeling supple, pampered and kissably soft. 10 g
224-935-1
reg. 20.00
15.99



nourish
With mango seed butter, vitamin E, and jojoba and sunflower seed oil.
fmg Glimmer Lip Conditioner
Keep your pout soft and kissable! Leaves dry, cracked lips feeling soft and smooth. 3.5 g
223-379-6
reg. 16.00
12.99

LIP COLOUR



Get a polished shine, instant hydration and visibly plump lips with 7 essential oils and intense vivid colour.

fmg Ink High-Gloss Lacquer

Sweet almond, borage seed, calendula, chamomile flower, lavender, rose flower and rosemary leaf oil helps to keep lips feeling luxurious, supple and hydrated. 5 g
 reg. 30.00
24.00



A nude pout... perfect for summer.

Birthday Balm Lip Crayon

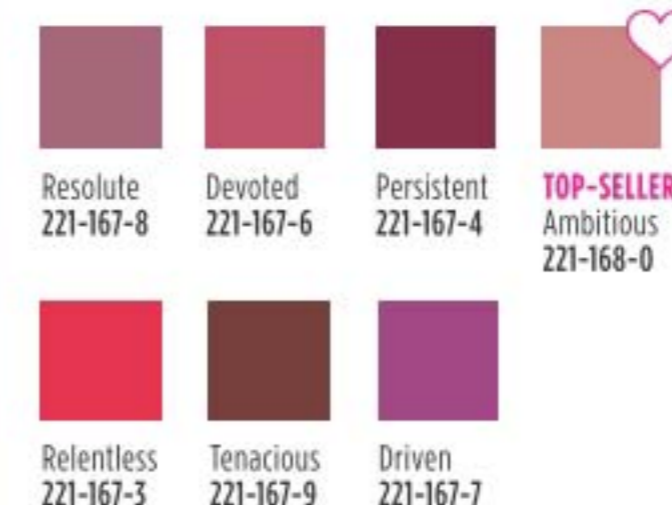
Moisturizing formula rich in non-GMO shea butter for soft supple lips. Mineral oil/paraben/phthalate/gluten-free. 2.7 g
 reg. 17.00
13.99



VELVETY SOFT MATTE FINISH



MAKEUP



Weightless, non-drying formula that lasts for hours.

Mattitude Soft Matte Liquid Lip

Micronized pigments release vivid colour. Poppy seed oil and vitamin E nourish and smooth lips. Paraben/sulfate/phthalate-free. 4 ml
 reg. 19.00
13.99



2-in-1 Lip Tattoo Lip Line & Fill Duo

Semi-permanent lip stain with all-day wear. Infused with sunflower seed oil to help hydrate lips. Paraben/gluten/phthalate/sulfate-free. Vegan. 1.6 ml
 reg. 19.00
13.99

Let us help you find your perfect formula and shade at avonlipmatch.ca

MATCH perfect for all skin tones and types

fmg Match Blur Oil Control Primer Balm

Special blurring powder microspheres help reduce the look of fine lines and pores. With **nutmeg extract** for **antioxidant benefits**. Includes a sponge applicator for quick touch-ups. Talc/paraben-free. 17 g
224-364-5
 reg. 28.00
22.99



Sheer mattifying formula helps control oil

Demi-matte finish



fmg Match Corrector Brightening Perfector

Creamy veil of colour helps reduce the appearance of fine lines, dark circles, blemishes and blurs imperfections. Lightweight formula infused with **caffeine, soothing marigold** and **vitamin E**. Buildable sheer-to-medium coverage with a demi-matte finish. Great for on-the-go. Talc/paraben/sulfate/alcohol/fragrance-free. 3.2 g
 reg. 19.00
14.99



fmg Match Dust Finishing Powder

Weightless loose mineral powder with soft matte finish. Wear alone or to set makeup. Includes no-spill twist-and-lock sifter. Free from talc, oil and parabens. 6 g
 reg. 24.00
19.99



Diffuses light, visibly blurs pores and controls shine



MAKEUP

POWDER POWER

Keep your complexion looking flawless on-the-go!

NEW

Mineral-infused loose powder and brush in one!

fmg Match Set Finishing Powder To-Go

Creates an invisible veil that controls shine and sets makeup. Lightweight formula diffuses light and visibly blurs pores and fine lines. Silky-soft matte finish never looks cakey. Talc/paraben/fragrance-free, 2.7 g
222-878-0
 reg. 24.00
19.99

Twist. Shake. Dust. Take me everywhere!

fmg Match Set Finishing Powder

Mineral-infused loose powder creates an invisible veil. Lightweight formula diffuses light and visibly blurs pores and fine lines. Silky-soft matte finish never looks cakey. Includes powder puff. Talc/paraben/fragrance-free. 6.5 g
224-487-0
 reg. 24.00
19.99



Sets makeup and helps control shine

THE MULTI TASKERS

Let the real you shine through with no-makeup makeup! Our targeted tinted moisturizers blur flaws, even skin tone and boost moisture.

BOOSTS RADIANCE



fmg Magix Tint Radiant Tinted Moisturizer (R)
Buildable coverage. With **passion fruit, chia** and **sunflower seed oil** and **antioxidant vitamins E and B5**. For normal, dry, combination and oily skin. Paraben-free. 30 ml
reg. 20.00
15.99

CONTROLS SHINE



fmg Magix Tint Oil-Free Tinted Moisturizer (OF)
Buildable coverage with a demi-matte finish. With **niacinamide, clay** and **green tea extract**. For oily and combination skin. Paraben/talc/phthalate/fragrance/alcohol-free. 30 ml
reg. 20.00
15.99

INSTANTLY HYDRATES



fmg Magix Tint Natural Tinted Moisturizer (N)
Sheer veil of colour with a natural demi-matte finish. With **hyaluronic acid, antioxidant vitamin E** and **papaya complex**. For normal, dry, combination and oily skin. Paraben/talc/phthalate/fragrance/alcohol-free. 30 ml
reg. 20.00
15.99

Flexible shade range in Radiant (R), Oil-Free (OF) and Natural (N)

	Fair (R) 223-196-1 (OF) 222-883-9 (N) 222-880-7
	Fair Light (R) 222-941-3 (OF) 222-884-0
	Light (R) 223-196-2 (OF) 222-884-1
	Light Medium (R) 223-196-3 (OF) 222-884-6
	Soft Medium (R) 222-941-4 (OF) 222-884-8 (N) 222-882-5
	Medium (R) 223-196-4 (OF) 222-884-9 (N) 222-882-6
	Medium Deep (R) 223-196-5 (OF) 222-885-1 (N) 222-883-3
	Tan Deep (R) 222-941-5 (OF) 222-885-2 (N) 222-883-4
	Deep (R) 223-196-6 (OF) 222-885-3 (N) 222-883-6

MATCH

fmg Match Filter Serum Tint Foundation
Lightweight formula infused with **hyaluronic acid, vitamin E** and a **berry complex**. Creamy formula transforms to a demi-matte powder finish for a beautiful veil of colour. Buildable sheer-to-medium coverage. Suitable for all skin types. Talc/paraben/fragrance-free. Includes sponge applicator. 12 g
reg. 24.00
21.99



Fair 223-965-0	Fair Light 223-965-1	Light 223-965-2	Light Medium 223-965-3	Soft Medium 223-965-4	Medium 223-965-5	Medium Deep 223-965-6	Tan Deep 223-965-7	Deep 223-965-8

Meringue (N) 224-693-0	Marshmallow (N) 224-693-1	Coconut (N) 224-693-2	Vanilla (W) 224-693-3
Macadamia (W) 224-693-4	Chai (W) 224-693-5	Toasty (N) 224-693-6	Cappuccino (W) 224-693-7
Tiramisu (W) 224-693-8	Amaretto (N) 224-693-9	Latte (W) 224-694-0	Hazelnut (W) 224-694-1
		Available in Warm (W), Neutral (N) or Cool (C) undertones.	
Pecan (N) 224-694-2	Truffle (C) 224-694-3		



Cover + Perfect + Blur

fmg Match Wand Foundation Stick
Full and flexible all-over coverage in a demi-matte finish. Helps to control oil and shine. Water-resistant. With **shea butter** and **antioxidant vitamin E**. Conceal, contour and highlight with the on-the-go wand perfect for easy touch-ups. Paraben/sulfate/phthalate-free. Vegan. 6 g
reg. 23.00
18.99

Packaging may vary.

THE BLUSH OF LOVE

Love the subtle boost of radiance!

fmg Colors of LOVE Blushing Beads Powder Blush

Colourful heart-shaped and round blush beads blend beautifully, creating a balanced flush of colour. Lightweight powder formula provides a delicate pearlescent finish that is perfect for all skin tones. Free from parabens, phthalates and fragrance. 20 g
reg. 42.00
35.00



Heart-shaped and round beads create instant radiance.

fmg Colors of LOVE Glow Beads Illuminating Powder

Lightweight formula with pearlescent finish. Vegan. 20 g
reg. 42.00
35.00



44 | C20

BLUSHING BEADS
Charming

BLUSHING BEADS
Butterflies

GLOW BEADS
Queen of Hearts

GLOW BEADS
Wild Hearts



COLORS OF LOVE

Soft radiant glow.

fmg Colors of LOVE Glow Balm Illuminating Stick

Lightweight creamy formula with ultrafine pearls blend for a soft, natural, radiant glow. 8 g
reg. 23.00
18.99



Moonstruck



Warm, healthy-looking glow.

fmg Colors of LOVE Glow Balm Bronzing Stick

Lightweight creamy formula with ultrafine pearls blend for a warm, healthy-looking glow. 8 g
reg. 23.00
18.99



Warmhearted



Dual-ended glow stick.

fmg Colors of LOVE Glow Balm Duo Illuminating Stick

Sheer dual-ended illuminating stick with complementary shades that blend and layer beautifully for expert highlighting and definition. Lightweight formula with multi-colour, ultrafine and bold pearls, glides on smoothly for a soft, shimmery finish. 8 g total.
reg. 30.00
23.99

Heartthrob
222-877-8



fmg Colors of LOVE Heart-Warming Bronzer Matte Mineral Powder

Skin-loving mineral powder helps reduce the appearance of shine. Silky matte formula with moisturizing phytosqualane glides on evenly without appearing cakey. Special-effect pigments hug the skin for a lasting bronzed finish. Perfect for all skin types. Vegan. 11.8 g
reg. 35.00
29.00



Golden Days





Evening Sunflower

BRONZER

Silky water-based formula with hyaluronic acid.

fmg Colors of LOVE Sun-Kissed Cushion Bronzer

Instantly hydrates, soothes and visibly plumps skin, plus rosemary extract with antioxidant benefits. Buildable sheer-to-medium coverage. Free from parabens, phthalates and fragrance. 8 g
reg. 38.00
32.00



Morning Sunflower
224-564-6



Evening Sunflower
224-564-9



Cherry Blossom

HIGHLIGHTER

Instantly boosts hydration.

fmg Colors of LOVE Kiss Me Cushion Highlighter

Skin-loving colour, water-based formula with hyaluronic acid. Buildable sheer-to-medium coverage. 8 g
reg. 38.00
32.00



Cherry Blossom
224-545-4



Fairy Dahlia
222-413-5



Golden Lily
222-414-4



Passion Rose

BLUSH

Skin-loving colour.

fmg Colors of LOVE Kiss Me Cushion Blush

Water-based formula with hyaluronic acid instantly boosts hydration. Buildable sheer-to-medium coverage. 8 g
reg. 38.00
32.00



Hibiscus Kiss
224-541-5



Passion Rose
224-540-7



Orchid Kiss
222-264-0



Midnight Lily
222-264-1



Sweet Pea
222-263-8



Queen Carnation
222-263-9



SO ILLUMINATING!

Model is wearing Medium.

Buildable luminous coverage for summer



Add a dewy glow while hiding dark circles, blemishes and flaws.

fmg Illuminating Cushion Corrector

Perfect your complexion! Infused with antioxidant vitamins C and E and camellia flower extract. Buildable formula provides sheer-to-medium coverage for a flawless, radiant finish. Includes sponge applicator and mirror. Paraben/sulfate/fragrance-free. 15 g
reg. 22.00
18.00



Fair-Light
224-804-0



Medium
224-821-4



Tan-Deep
224-821-7

BEAUTY ESSENTIALS

NEW

Nail Brush

Works better than soap and water alone to clean dirt under fingernails and on hands. 10 x 5 x 3 cm. Polystyrene/polypropylene.

225-514-2

3.99

limited quantities



Gently removes even the most stubborn waterproof makeup.

Waterproof Lip & Eye Makeup Remover

Infused with moisturizing oils. Mineral/talc/paraben-free. Shake well to activate.

110 ml

222-381-9

reg. 17.00

~~14.00~~

7.99

TRY-IT PRICE!



Infused with charcoal known to help eliminate impurities.

Daily Beauty Tool Charcoal & Konjac Cleansing Puff

Wet puff and apply cleanser to face. Massage skin in small circular motions for a gentle, deep cleanse. Reusable.

13 cm W x 18 cm L.

223-877-8

6.99

limited quantities



Perfect for liquid or cream makeup.

Avon Pro Flawless Makeup Blender

Eliminates visible lines and streaks for seamless makeup application. 5 x 3 cm. Non-latex polyurethane.

110-389-9

reg. 11.00

6.49



Set it and forget it.

Avon True Color Makeup Setting Spray

Helps set foundation, blush and eye makeup without drying skin. Ultra-lightweight, fast-drying spray.

60 ml

114-594-4

reg. 21.00

13.99



Travel-friendly resealable pack.

fmg Makeup Remover Wipes

Unscented wipes gently and easily remove it all... from stubborn makeup to dirt and oil. Leaves skin feeling soft and clean without leaving behind a heavy residue.

224-321-5

reg. 13.00

10.49 each pack



Pack of 24 WIPES



Double-sided nail file with leopard print design.

Leopard Print Nail File

Grit paper/EVA.

18 cm L. 224-505-7

reg. 3.00

2.49

limited quantities

AT-HOME MANI MADE EASY!

MAKEUP

Each set includes 14 STICKERS

Glimmering Gold 225-114-8



Kaleidoscope 225-114-9

LIMITED EDITION

NEW

fmg Glimmer Gel Nail Stickers

Easy-to-apply glossy gel nail stickers add a fun pattern to your nails without having to take a trip to the salon. No-mess application doesn't require additional tools or dry time. Available in two fun glimmer and glitz prints that are perfect for any occasion. Each set includes 14 stickers.

reg. 14.00

12.00 each set



full size

try-it size

try-it size

full size

GOTTA GET IT!

NEW

- Keep Your Glow Up
- fmg Glimmer Lip Glaze in Shine 9 ml
- fmg Glimmer Cream Eyeliner in Majestic Plum 0.28 g
- belif Aqua Bomb Jelly Cleanser 30 ml
- Imari Amor Eau de Parfum Travel Spray 10 ml

225-258-2

ONLY 14.99

WITH EVERY 50.00 PURCHASE FROM THIS BROCHURE

(excluding page 50)

56.00 VALUE

50 | C20



Comes in a pouch

In case of unforeseen demand, Avon reserves the right to substitute with products of equal or greater value.

A MIST OF SCENT

A light essence of your favourite scent for hair, there and everywhere!



FRAGRANCE



Hair & Body Mist
 Caress your tresses with featherlight microconditioners that won't weigh your hair down. Lightweight formula envelops you in a soft cocoon of scent, while leaving hair with a subtle, healthy-looking shine. 96 ml

Far Away 223-058-6
Haiku 223-058-7
Rare Pearls 223-058-8
 reg. 22.00
16.99 each

C20 | 51

INTENSE FRAGRANCE COLLECTIONS

An alluring contrast of freshness & warmth.

Haiku Sacred Intense *fresh & clean*

Discover a divine blend of uplifting tangerine, rose de mai and earthy driftwood, balancing the beauty of nature.

Eau de Parfum
fresh & clean
50 ml **222-672-0**
reg. 45.00
34.99

Luxury Body Wash
200 ml **222-950-6**
reg. 30.00
21.99

Luxury Body Crème
150 ml **222-621-6**
reg. 33.00
26.99



Travel to the destination of your dreams.

Far Away Beyond Intense *warm & exotic*

A potent blend of alluring jasmine, fresh orange blossom and warm tonka bean.

Eau de Parfum
50 ml **222-671-8**
reg. 45.00
34.99

Luxury Body Wash
200 ml **222-935-6**
reg. 30.00
21.99

Luxury Body Crème
150 ml
222-621-2
reg. 33.00
26.99



Rare Platinum
INTENSE
Unforgettably
confident.

Rare Platinum Intense
warm & dreamy
A potent fragrance with notes of iris, warm ambrette and smooth vetiver immerse you in dreamy luxury.

Eau de Parfum
50 ml **222-671-9**
reg. 45.00
34.99

Luxury Body Wash
200 ml **222-950-1**
reg. 30.00
21.99

Luxury Body Crème
150 ml
222-626-6
reg. 33.00
26.99

INTENSE FRAGRANCE COLLECTION

Haiku Intense Kyoto Flower Eau de Parfum *fresh & clean*

Delight in an elegant bouquet of violet leaf, white peony and soft cotton musk.

50 ml

222-619-7
reg. 45.00
34.99



Haiku Intense Eau de Parfum *fresh & clean*

An airy floral evoking the serenity of a beautiful garden oasis, blooming with Japanese yuzu, delicate muguet and blonde woods.

50 ml

222-619-6
reg. 45.00
34.99



Rare Gold Intense Eau de Parfum *warm & indulgent*

Opulent notes of mandarin zest, ylang-ylang and golden amber.

50 ml

222-619-9
reg. 45.00
34.99



Rare Pearls Intense Eau de Parfum *warm & dreamy*

A luminous blend of shimmering magnolia, white pepper and creamy rosewood.

50 ml

222-619-8
reg. 45.00
34.99



Far Away Infinity Intense Eau de Parfum *fresh & sweet*

A potent, luminous blend of radiant bergamot, jasmine sambac and sensual sandalwood takes you wherever you desire.

50 ml

222-619-1
reg. 45.00
34.99



Far Away Intense Eau de Parfum *warm & exotic*

Be transported to the exotic and beyond with a potent blend of freesia, jasmine absolute and enticing amber.

50 ml

222-619-0
reg. 45.00
34.99



DAILY ESSENTIALS keep your scent going strong

Scented body lotion

The fragranced, creamy body lotion leaves skin soft, smooth and beautifully scented.

Body Lotion

200 ml

Haiku **155-600**

Rare Pearls **102-953-3**

reg. 17.00

8.99 each



Luxurious shampoo in your fave scent

Nourishing lather cleanses and protects without weighing hair down for ultimate volume.

Shampoo

350 ml

Haiku **223-252-0**

Rare Pearls **223-251-9**

Far Away **222-950-0**

reg. 19.00

15.99 each



STUDIO 1886

Legacy. Powerful. Vibrant.

Gilded
Eau de Parfum
fresh & vibrant
 An exquisite blend of watery rhubarb, violet leaves and rich black currant, transporting you back in time with a modern twist.
 50 ml
222-599-3
 reg. 70.00
55.00

GILDED
fresh & vibrant
 Watery rhubarb, violet leaves and rich black currant.
Body Lotion
 200 ml
222-694-0
 reg. 28.00
21.99



TECHTOPIAN
fresh & vibrant
 Magnolia, white rose and warm musk.
Body Lotion
 200 ml
222-697-1
 reg. 28.00
21.99
 Last time in brochure.
 While supplies last.



XXI
fresh & clean
 Sparkling orange, fresh sage and patchouli.
Body Lotion
 200 ml
222-694-1
 reg. 28.00
21.99



GINZA STEFANY

The power of eternal love

Always Beside You
Eau de Parfum
warm & exotic
 Intoxicating notes of orange leaf, tuberose and earthy musk. 50 ml **222-811-5**
 reg. 74.00
62.00

Wish You Were Here
Eau de Parfum
fresh & clean
 Fragrant notes of sweet hawthorn berry, ripe pear and sensuous patchouli. 50 ml **222-792-1**
 reg. 58.00
49.00

In My Arms
Eau de Parfum
fresh & sweet
 Sunlit gardenia tree, black currant and delicate peach. **222-792-2**
 reg. 58.00
49.00

LYRD Artisan

unisex fragrances for him or her



Santal Musk
warm & exotic
Indian sandalwood mixes with magnetic white musk.

Eau de Parfum
50 ml **222-376-4**
reg. 75.00
60.00

Eau de Parfum Travel Spray
10 ml **222-376-7**
reg. 30.00
24.00



Cherry Vetiver
warm & indulgent
Wild cherry blends with smooth Haitian vetiver.

Eau de Parfum
50 ml **221-958-8**
reg. 75.00
60.00

Eau de Parfum Travel Spray
10 ml **221-959-0**
reg. 30.00
24.00



A world of authentic fragrances expertly crafted by master perfumers with unexpected combinations of the finest ingredients.



LYRD

layers of exclusive ingredients

Sparkling Neroli
fresh & vibrant
Sparkling neroli, blended with uplifting bergamot and warm musk.

Eau de Parfum
50 ml **223-517-4**
reg. 52.00
42.00

Eau de Parfum Travel Spray
10 ml **223-468-9**
reg. 26.00
21.99



Oud Rose
Eau de Parfum
warm & indulgent
An intoxicating dance of seductive oud and alluring rose.
50 ml **223-185-0**
reg. 52.00
42.00



Honeysuckle Blossom
Eau de Parfum
fresh & sweet
Delicate apple blossom, lively honeysuckle nectar and radiant vanilla orchid. 50 ml
223-300-7
reg. 42.00
28.00



Peony Rosé
Eau de Parfum
fresh & clean
Sparkling notes of dewy peony petals, pink currant, and sheer musk.
50 ml **223-300-5**
reg. 42.00
28.00





NIGHT MAGIC

Sizzling with
a sultry blend
of warm and
exotic notes.

An enigmatic
mix to heat up
the night.

**Night Magic
Cologne**

Neroli, jasmine
and musk. 50 ml
110-300-9
reg. 26.00

**LIMITED
TIME OFFER**
12.99



CLASSIC SCENTS
that are tried-and-true favourites!

AVON CLASSICS COLLECTION



Awaken your spirit.
Free O2 Eau de Toilette
fresh & clean
White peach tea, airy honeysuckle and musk. 50 ml **222-618-9**

A refreshing, outspoken blend.
Candid Cologne
warm & exotic
Bergamot, tuberose and patchouli. 50 ml **110-321-3**

An enduring classic.
Timeless Cologne
warm & exotic
Bergamot, jasmine and patchouli. 50 ml **110-373-1**

A wanderlust of spice.
Odyssey Cologne
warm & dreamy
Muguet, ylang-ylang and warm oakmoss. 50 ml **110-321-2**

Exquisite expression.
Topaze Cologne
fresh & clean
Jasmine, rose and sheer musk. 50 ml **223-321-3**

A sweet moment.
Sweet Honesty Cologne
warm & dreamy
Roses, peach and sandalwood. 50 ml **110-437-8**

reg. 26.00
SPECIAL
15.99 each

LUXURIOUS SCENTS FOR HER

Live Out Loud Eau de Parfum *fresh & vibrant*

A free-spirited expression of sweet wild strawberry, sparkling mimosa and comforting fluffy vanilla. 50 ml
221-142-5
reg. 56.00
35.00



Today
Eau de Parfum
fresh & clean
Joyful notes of hibiscus and silk musk. 50 ml
836-39
reg. 42.00
32.00



Kate Eau de Toilette *fresh and vibrant*

An evocative scent with fresh fruity accents, glistening blooms and woody notes. 50 ml
222-436-2
40.00



Prima
Eau de Parfum
warm & dreamy
Plum, rose and white patchouli. 50 ml
122-508-3
reg. 42.00
28.00

Prima Noir
Eau de Parfum
warm & indulgent
Violet, jasmine and creamy vanilla noir. 50 ml
119-733-8
reg. 42.00
28.00



MEN'S FRAGRANCES

EAU SO CHIC scents for him

Alpha
Eau de Toilette
fresh & aromatic
Charismatic verbena, spiced cardamom and refined cedarwood. 100 ml
104-118-3
reg. 35.00
22.99



Exploration
Eau de Toilette
fresh & clean
Fresh orange, silver sage and vetiver. 75 ml
122-508-2
reg. 35.00
22.99



Blue Escape
Eau de Toilette
fresh & clean
Ocean mist, white pepper, tropical driftwood and musk. 75 ml
391-946
reg. 35.00
22.99



Perceive
Cologne
fresh & clean
Sparkling citrus, sage and cedarwood. 100 ml
831-73
reg. 35.00
22.99



Prime
Eau de Toilette
fresh & clean
Lavender, spearmint and cedarwood. 75 ml
114-322-0
reg. 35.00
22.99





Bright marigold,
Indian jasmine
sambac and
vanilla.

**Far Away Infinity
Eau de Parfum**
fresh & sweet
50 ml
223-197-4
reg. 35.00
22.99 or...



Warm peach,
jasmine, spiced
amber and
spirit-moving
woods.

**Far Away
Eau de Parfum**
warm & exotic
50 ml
223-198-3
reg. 35.00
22.99 or...



Rich Mohéli
ylang-ylang,
Indian jasmine
and seductive
Madagascar
vanilla.

**Far Away Gold
Eau de Parfum**
warm & exotic
50 ml
223-197-1
reg. 35.00
22.99 or...



Classic fragrance favourites for her

ANY 2 FOR 38.00

MIX OR MATCH PAGES 66-71
To get the 2 FOR price, please order in multiples of 2.

Passionate
plum,
mysterious
violet and
sandalwood.

**Rare Amethyst
Eau de Parfum**
*warm &
indulgent*
50 ml
102-456-8
reg. 35.00
22.99 or...



Rich orange
flowers
sparkle with
bergamot
and precious
amber.

**Rare Gold
Eau de Parfum**
*warm &
indulgent*
50 ml
102-456-9
reg. 35.00
22.99 or...



Pearlescent
flower accord,
creamy
magnolia, fresh
rosewood and
sandalwood.

**Rare Pearls
Eau de Parfum**
warm and dreamy
50 ml
102-457-0
reg. 35.00
22.99 or...



Sparkling plum,
diamond
orchid and
cashmere
woods.

**Rare Diamonds
Eau de Parfum**
warm & dreamy
50 ml
106-258-0
reg. 35.00
22.99 or...





Japanese yuzu, delicate muguet and blonde woods.

Haiku
Eau de Parfum
fresh & clean
50 ml
220-269-8
reg. 35.00
22.99 or...



Radiant water accord, acacia blossom and amber wood.

Haiku Reflection
Eau de Parfum
fresh & clean
50 ml
115-861-8
reg. 35.00
22.99 or...



Violet leaf, white peony and soft cotton musk.

Haiku Kyoto Flower
Eau de Parfum
fresh & clean
50 ml
435-140
reg. 35.00
22.99 or...



Classic fragrance favourites for her

ANY 2 FOR 38.00

MIX OR MATCH PAGES 66-71
To get the 2 FOR price, please order in multiples of 2.



Flirtacious blend of seductive rose, playful jasmine and warm woody notes of sandalwood.

Imari Amor
Eau de Parfum
warm & dreamy
50 ml
224-353-2
reg. 35.00
22.99 or...



Luscious plum, hypnotic purple orchid, warm vanilla, amber and musk.

Imari Seduction
Eau de Toilette
warm & indulgent
50 ml
220-270-2
reg. 35.00
22.99 or...



Radiant bergamot, opulent jasmine and vanilla orchid.

Imari
Eau de Toilette
warm & exotic
50 ml
222-370-1
reg. 35.00
22.99 or...





Classic fragrance favourites for him

Bergamot,
spicy
cardamom
and amber.

**Mesmerize
Cologne**
*warm &
intoxicating*
100 ml
222-370-2
reg. 35.00
22.99 or...



Pepper,
addictive
nutmeg and
tonka bean

**Mesmerize
Black
Eau de Toilette**
*warm &
intoxicating*
100 ml
108-628-3
reg. 35.00
22.99 or...



ANY 2 FOR 38.00

MIX OR MATCH PAGES 66-71
To get the 2 FOR price, please order in multiples of 2.

GENTLEMEN

Fall is upon us... that calls for cozy sweaters, brisk walks, and the time to switch up your fragrance. Look for a warm scent with nutmeg, cardamom, or a blend with sandalwood.



A rugged
blend of
lavender,
coriander
seed and
sandalwood.

**Wild Country
Cologne**
*fresh &
aromatic*
88 ml **836-47**
reg. 32.00
19.99 or...



A fusion blend
of bergamot,
soft leather
and oak moss.

**Black Suede
Eau de Toilette**
fresh & aromatic
100 ml
222-427-9
reg. 32.00
19.99 or...



BLACK SUEDE

A fusion blend of bergamot, soft leather and oak moss.

fresh & aromatic

Hair & Body Wash
150 ml 222-701-7
reg. 12.00
5.99

Aftershave Conditioner
100 ml 222-701-5
reg. 12.00
5.99



WILD COUNTRY

A rugged blend of lavender, coriander seed and sandalwood.

fresh & aromatic

Aftershave Splash
118 ml 222-574-4
reg. 19.00
14.99

Hair & Body Wash
150 ml 222-701-6
reg. 12.00
5.99



Black Suede
224-707-2

RAISE THE BAR

Moisturizing soap leaves skin lightly fragranced in your signature scent.

Wild Country
224-707-3

Bar Soap
Moisturizes as it gently cleanses. 90 g
reg. 9.00
5.99 each

GENTOLOGY FOR MEN

Herb & aloe total care. No parabens or mineral oil.
Dermatologist-tested.

Hair &
body
wash



Moisturizer



2-in-1 Hair and Body Wash
Washes away dirt and sweat without over drying. Aloe and natural herbal extracts help to calm and soothe, refresh, energize, and deodorize. 300 ml **222-371-8**
reg. 23.00
18.99

Total Care Moisturizer
Convenient lotion/essence formula tones, moisturizes, helps visibly brighten and smooth wrinkles all in one. Use AM/PM on face, neck and body after cleansing and shaving. With aloe, herbal and citrus extracts, and niacinamide. 150 ml **222-371-7**
reg. 23.00
18.99



STUDIO 1886

Enhance his grooming routine.

FRAGRANCE

Studio 1886 Legendary Eau de Toilette
fresh & aromatic
Vibrant lemon, patchouli and salted amber. 50 ml
222-706-0
reg. 70.00
55.00

Studio 1886 Legendary All-in-One Hair and Body Wash
Leaves hair and skin feeling clean and lightly scented. 200 ml
222-847-3
reg. 28.00
21.99





an explosion of moisture!

belif combines time-trusted apothecary herbal traditions with modern Korean skin science. **Honesty, simplicity and transparency** are in all aspects of the brand. Believe in our truth for your skin.

NO synthetic dyes or fragrances, mineral oil, animal products, parabens, sulfates or phthalates

belif the true cream - moisturizing bomb mini
This lightweight yet indulgent cream helps skin look and feel smooth and supple. 10 ml
10.00 value

26 hours
of intense
hydration*



FREE MINI
with every belif purchase
from pages 78-83

In case of unforeseen demand, Avon reserves the right to substitute with a product of equal or greater value.

*Based on a clinical study.



moisturize face & eyes

For dullness and uneven tone and texture



For dryness, loss of elasticity and firmness



the true cream - aqua bomb

This ultralight, water-based, refreshing gel cream bursts upon application to instantly cool skin and release a flood of weightless moisture. Helps visibly improve skin elasticity. Skin looks healthy, smooth and supple. Suitable for sensitive skin.

Full size, 50 ml
222-400-9
50.00

Try-it size, 25 ml
222-401-2
29.00

the true cream - moisturizing bomb

This lightweight yet indulgent cream, with a comforting, cushiony, whipped texture, envelops skin with intense, long-lasting moisture. Skin looks and feels smooth, supple and deeply nourished. Suitable for sensitive skin.

Full size, 50 ml
222-724-1
50.00

Try-it size, 25 ml
222-401-7
29.00

For redness, irritation and dryness



the true cream - aqua bomb aloe

A moisturizing gel-cream with aloe vera extract to instantly soothe skin, plus a multi-level blend of hyaluronic acid that penetrates different layers for intense hydration, and vitamin E to visibly smooth texture and even tone. 50 ml
223-213-2
50.00

For dryness, loss of elasticity and firmness



moisturizing eye bomb

This lightweight, refreshing eye cream cools on contact and helps keep eye area firm, resilient and smooth for crease-free makeup application. 25 ml
222-319-0
62.00



FREE MINI
details page 77



cleanse, scrub, tone & treat

Super hydrating cleansing balm changes from balm to cream to oil upon contact with skin



aqua bomb makeup removing cleansing balm

With lotus flower, marshmallow root and lady's mantle to hydrate skin and boost radiance while removing all traces of dirt and makeup. No oily residue. 100 ml **223-417-2 48.00**

FREE MINI
details page 77

Cleanse with a **burst of hydration!**



aqua bomb jelly cleanser

97% of women felt it was gentle while cleansing* Jelly-to-foam formulated with amino acids and glycerin-based cleansing agents gently remove makeup without stripping skin of moisture. 160 ml **222-316-8 37.00**

*Based on a consumer-perception study.

With lemon balm to help **prevent breakouts**



NEW mild and effective facial scrub

With lemon balm, a detoxifying herb from the mint family that soothes and smooths skin and helps prevent skin blemishes for a clear, healthy-looking complexion. 100 ml **222-808-5 29.00**

Leaves skin looking soft and smooth with a **healthy-looking glow**



aqua bomb hydrating toner

Lightweight water-based toner with super-hydrating hyaluronic acid, soothing honeysuckle flower extract and moisture-enhancing baobab tree seed extract. Use after cleansing, before serum and moisturizer. Sulfates/paraben/phtalate-free. 200 ml **222-319-4 39.00**

For fine lines and wrinkles, look of pores, and **loss of firmness and elasticity**



youth creator - age knockdown bomb

Antioxidant-rich serum helps reduce the appearance of enlarged pores and boosts elasticity for smoother, younger-looking skin. With nourishing ceramides. 50 ml **222-841-9 80.00**

For elasticity, loss of firmness and the **look of pores**



the true serum revitalizing niacinamide/amino acids solution 10%

This powerful serum with niacinamide, amino acids solution and a special blend of herbs help shrink the look of pores for a smoother appearance. 50 ml **222-486-6 65.00**

For dullness and uneven **tone and texture**



the true serum resurfacing PHA/AHA 10%

Helps gently and effectively exfoliate to visibly improve skin tone and texture and reveal a fresher, more youthful look. 50 ml **222-486-8 65.00**



hydrate & refresh



Soothing
lightweight gel
formula **lip mask**



Large 75 ML
For an extra boost
of hydration



Top notes:
Sparkling
citrus and
sweet berry
Mid notes:
Spring
blossoms and
white flower
Dry notes:
White musk
and woods



Top notes:
Lemon zest
and dewy
bamboo
Mid notes:
Pear blossom
and water lily
Dry notes:
Amber and
musk

aqua bomb overnight lip mask
Formulated with cica, shea butter, antioxidants and vitamins Rich, nourishing mask helps soothe and moisturize dry, irritated lips overnight, while helping to reduce the appearance of fine lines and wrinkles on lips. 20 g **224-691-9 25.00**

aqua bomb sleeping mask
This mask locks in moisture and replenishes skin with explosive hydration. Jelly pudding-like texture. Replenishes with explosive hydration for smoother, more supple-looking skin and a healthy glow. Use after or instead of moisturizer. Rinse off in AM. 75 ml **222-916-5 48.00**

fresh scents
Discover belif's eau de parfums that capture nature's vitality.

the garden eau de parfum
fresh + vibrant
Energize your senses with an invigorating fragrance that takes you on a stroll into a garden, where belif unearthed the energy of nature. 50 ml **222-914-1 reg. 80.00 65.00**

the woods eau de parfum
fresh + sweet
Invigorating floral greens transport you into the woods, where belif discovered the secrets of herbal remedies. 50 ml **222-921-0 reg. 80.00 65.00**



FREE MINI
details page 77



DR. BELMEUR Skin-Sync Rx™

with plant-based, skin-friendly ingredients.

Cica is more than just a trendy beauty ingredient—it's known to relieve irritated skin, strengthen the skin barrier and gently moisturize. In fact, cica was named "tiger grass" after tigers were discovered rolling in it to heal their wounds.

ON-THE-GO KIT

to keep skin soothed and hydrated wherever you go!

A complete regimen
in handy mini sizes!



Includes:

- **Amino Clear Bubble Foaming Cleanser** 30 ml
- **Advanced Cica Recovery Cream** 10 ml
- **Advanced Cica Eye Cream** 8 ml
- **2 Cica Peptide Ampoules** 6 ml each

**LIMITED-EDITION
The Face Shop Dr. Belmeur
Daily Skin Care Kit**

Try-it sizes of our best-sellers.
224-106-9
reg. 37.00

SPECIAL 20.00

5-PIECE BOXED SET

Derma Collagen Neck Patch

With 7 Peptide complex to help visibly firm the skin on the neck for a more youthful appearance. Provides lightweight moisture to plump and firm the neckline. 1 single-use patch.

225-067-0
reg. 9.00
7.00



Derma Collagen Eye Patches

Collagen infused gel eye patches help to hydrate and smooth the look of fine lines and wrinkles for a more youthful, vibrant appearance. 2 single-use patches.

225-067-2
reg. 9.00
7.00



Intense Face Mask Cica Peptide

Visibly soothes, and smooths for naturally glowing skin. Sheet mask gently adheres to skin without irritation. After cleansing, before moisturizing.

1 single-use sheet mask. **222-945-8**
reg. 6.00
4.00



Daily Repair Cica Moisturizing Lip Balm

Soothes dry, sensitive lips. Moisturizing cica-infused oil glides over lips to keep them soft and smooth. Free of fragrance and mineral oil. Suitable for sensitive skin.

Dermatologically-tested. 4 g
222-915-5
reg. 21.00
18.00



Advanced Cica Eye Cream

Helps moisturize and firm dry, delicate area around eyes, with soothing cica extract and wrinkle-smoothing pro-retinol. With ceramide and pro-vitamin B5 to lock in and enhance moisture. Hypoallergenic. 25 ml

224-113-4
reg. 65.00
52.00



Cica Recovery Cream

For extra-dry and damaged skin. Strengthening ceramide helps restore the moisture barrier. Dermatologically-tested. Suitable for sensitive skin.

50 ml **221-900-9**
reg. 60.00
48.00



DR.BELMEUR
for visibly soothed,
smooth glowing skin

Cica Peptide Ampoule

For skin that needs firming. A concentrated blend of cica and peptides. Dermatologically-tested. Suitable for sensitive skin. Use after cleansing and before moisturizing with Cica Recovery Cream. 45 ml

221-966-1
reg. 65.00
52.00

Clarifying Facial Moisturizer

Soothes and moisturizes skin. Dermatologically-tested. Suitable for sensitive skin.

Use after cleansing. 120 ml
223-406-6
reg. 34.00
27.00

Amino Clear Bubble Foaming Cleanser

With salicylic acid and amino acid-based ingredients to help unclog pores and clean away dead skin cells. 150 ml

221-965-6
reg. 23.00
18.00



SKIN CARE

MISSION LUXEREVE

Reveal the remarkable youthful look you've always dreamed of.



Special fermentation technologies derived from natural ingredients

Serum

A deluxe rejuvenating serum formulated to help boost skin elasticity and firmness for the smoothest, most youthful-looking skin ever. Use after cleansing and before moisturizing with Mission Luxereve Cream. 30 ml

222-577-1
reg. 260.00
220.00

Cream

Enriched with luxurious oils and other moisturizing ingredients, this indulgent cream helps skin look smoother, firmer and radiantly healthy, for a more youthful, sculpted appearance. Use after Mission Luxereve Serum. 50 g

222-577-0
reg. 400.00
330.00



MISSION LUXEREVE GIFT SETS



Eye Cream Set

Helps visibly restore firmness and elasticity around the eyes. Includes:

- **Eye Cream** 15 ml
- **Rose Quartz Eye Massagers**
Set of natural massagers soothes and cools eye area, and helps relieve fatigue for a refreshed look. Ergonomic design lets you massage both eye areas at once. 3.5 x 3.75 cm

222-909-8
reg. 255.00
205.00
the set

Essence Set

Deep hydration to prep skin as it enhances the regimen's rejuvenating power and smooths skin. Includes:

- **Essence**
Use AM/PM after cleansing and before Mission Luxereve Serum and Cream. 110 ml (full-size)
- **Serum**
(try-it-size) 7 ml
- **Cream**
(try-it-size) 5 g

222-825-7
reg. 125.00
100.00
the set



for visibly firmer, more YOUTHFUL LOOKING SKIN

With **organic hibiscus extract** for visibly firmer, youthfully plumped skin, and enriched with **peptides** and other **rejuvenating ingredients**, our innovative formulas help skin look **resculpted and lifted from every angle**.



ISA KNOX LXNEW PLATINUM SCULPTING COLLECTION

A. Oil Serum

Helps visibly smooth wrinkles and tighten facial contours for a firmer, smoother, more lifted look. Hypoallergenic. 40 ml **223-197-7**
reg. 80.00
64.00

B. Day Cream

Visibly tightens facial contours and reduces the appearance of wrinkles for a firmer, smoother, more sculpted look. Hypoallergenic. 50 ml **223-197-6**
reg. 70.00
56.00

C. Night Cream

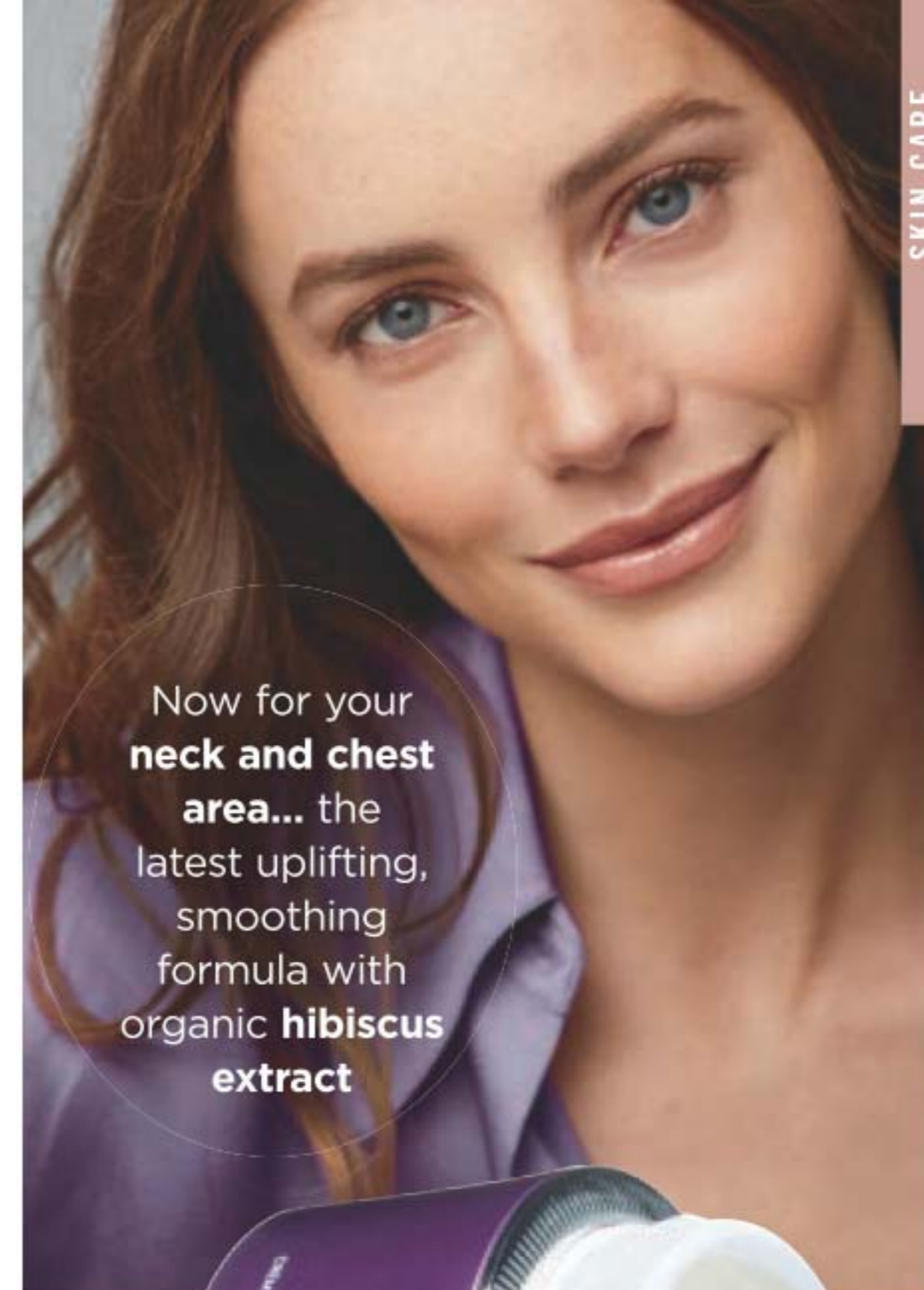
Visibly tightens facial contours and reduces the appearance of wrinkles for a firmer, smoother, more defined look. Hypoallergenic. 50 ml **223-197-5**
reg. 70.00
56.00

D. Eye Cream

Revitalizing antioxidants leaves the delicate eye area looking firmer, brighter, more defined. 25 ml **223-197-8**
reg. 70.00
56.00

E. Neck and Chest Cream

A blend of anti-aging ingredients including ceramide, shea butter, panthenol and squalane so vulnerable skin along neck and chest appears firmer, smoother and lifted. 50 ml **224-106-2**
reg. 70.00
56.00



Now for your
neck and chest
area... the
latest uplifting,
smoothing
formula with
organic **hibiscus**
extract



SKIN-NOURISHING, anti-aging skin and lip care

Infused **with paeonol**, our unique extract harvested at its peak from rare peonies in a patented compound specially formulated **for a rejuvenated look beyond the ultimate.**

ISA KNOX ANEW LX ULTIMATE REJUVENATING COLLECTION

Dual Night Cream

Two-step cream.
Volume Cream (pink)
with rice bran extract
to help visibly plump
skin. Firming Cream
(white) with peptides.
Each, 25 ml
224-488-5
reg. 70.00
56.00

Eye Serum

Helps visibly reduce
fine lines around the
eye area, diminish
dark circles and
depuff bags. 30 ml
224-488-8
reg. 70.00
56.00

Serum

Reduces the
appearance
of fine lines and
wrinkles for a
younger, smoother,
firmer look. 40 ml
224-488-7
reg. 80.00
64.00



glossy, moisture-
replenishing formula
for silky-smooth lips

Model is wearing Red.

Isa Knox Anew LX Ultimate Lip Balm

Luxurious paeonol-
infused tinted lip
balm provides long-
lasting hydration.
Wear alone or over
lipstick. 3.4 g
Red **224-497-1**
Pink **224-497-0**
reg. 35.00
29.99 each



ANEW PLATINUM firms and redefines the look of facial contours

TOTALLY UPLIFTING

Why lie about your age?
Our creams can do that
for you and smooth
the way to a more
youthful look.

Overnight, skin appears smoother.

Night Cream

Over time, skin appears resculpted.

50 g **106-588-4**

reg. 59.00

33.99



Dual-purpose treatment
for eyes and lips.

Eye & Lip Cream

Dual applicator.

15 g **429-062**

reg. 59.00

33.99



Visibly lifts and firms the look
of your jawline.

Day Cream Broad Spectrum

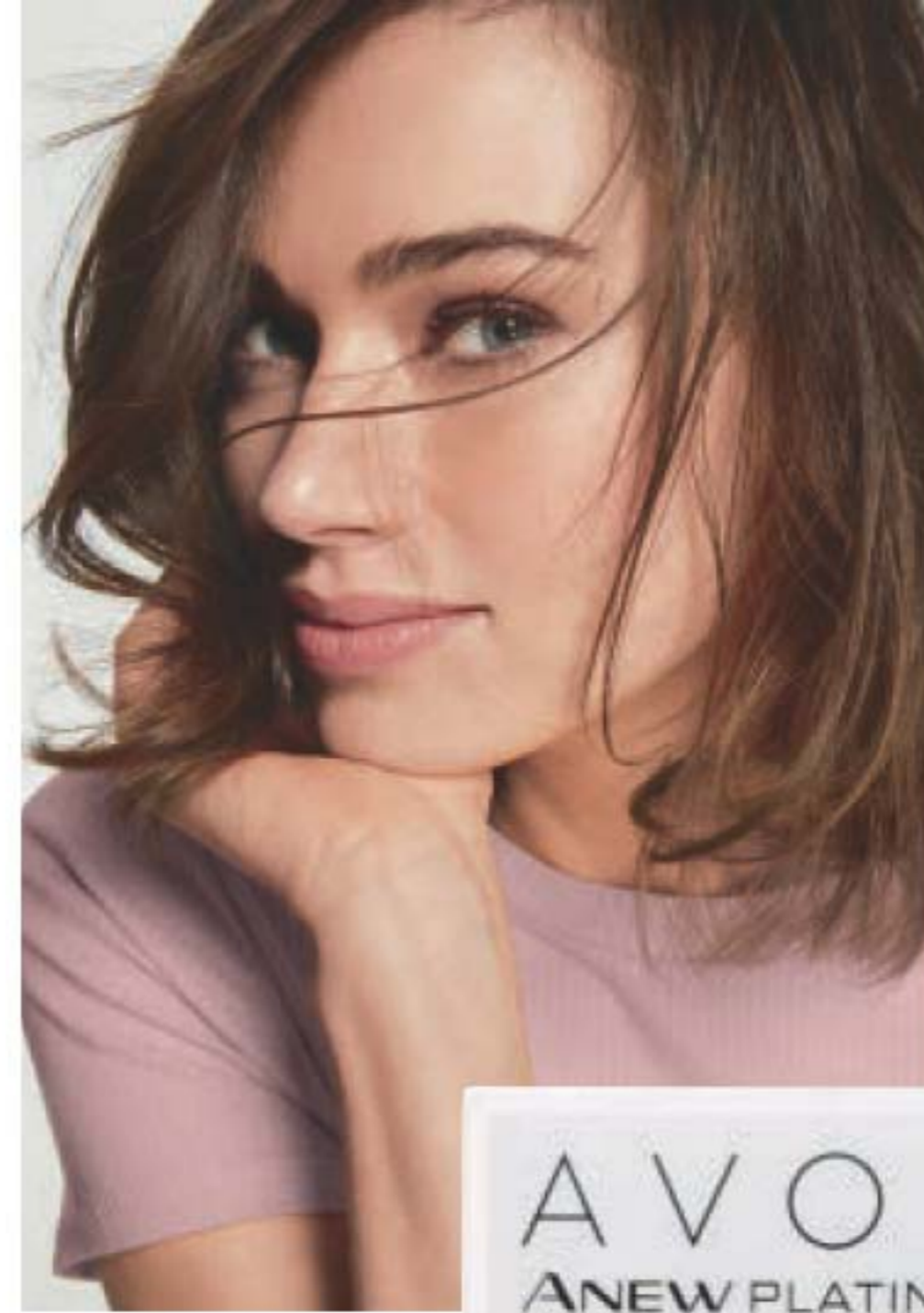
Sunscreen SPF 25

Helps restore the look of youthful skin.

50 g **223-642-3**

reg. 59.00

33.99



ANEW PLATINUM

REGIMEN SET

Includes three full size moisturizers
plus one try-it size serum.

PLATINUM Regimen Set

- Day Cream Broad Spectrum Sunscreen SPF 25 50 g
- Night Cream 50 g
- Eye & Lip Cream Dual applicator. 15 g
- Power Serum 7 ml

224-069-2

reg. 158.00

4-PIECE BOXED SET

79.99



\$158
VALUE

combat multiple SIGNS OF AGING

with our multi-performance skin care that improves texture, clarity, uneven skin tone and overall wrinkles around eyes.

Skin looks visibly firmer with fewer wrinkles and appears more luminous than ever before.

Multi-Performance Day Cream Broad Spectrum Sunscreen SPF 25
50 g 223-650-7
reg. 59.00
33.99



Indulge in your best you yet with this most luxurious night crème.

Supreme Advanced Performance Crème
50 g 112-399-3
reg. 84.00
55.00



Open your eyes to a smoother and firmer look with this 2-in-1 treatment.

Multi-Performance Eye System
Visibly smooths the look of crow's-feet and under eyes look visibly de-puffed.
Cream, 15 g; elixir, 2.5 g
122-538-2
reg. 59.00
33.99



Supreme Dual Elixir

Two innovative formulas—a unique serum and a luxurious blend of precious oils—combine for one supreme elixir that's 3X more powerful than a serum alone. Serum/oil, 20 ml each.
222-400-7
reg. 84.00
55.00



REGIMEN SET

Includes three full size moisturizers plus one try-it size serum.

ULTIMATE Regimen Set
• **Multi-Performance Day Cream Broad Spectrum SPF 25** 50 g
• **Multi-Performance Night Cream** 50 g
• **Multi-Performance Eye System** Cream, 15 g, elixir, 2.5 g
• **Power Serum** 7 ml
224-069-3
reg. 158.00
4-PIECE BOXED SET 79.99



\$158
VALUE

ANEW HYDRA FUSION what your skin's been thirsting for

LASTING HYDRATION

With hyaluronic acid and raspberry antioxidant, keeps skin looking refreshed and glowing!

Our highest concentration of hyaluronic acid for visibly plumper, bouncier skin.

1.5% Hyaluronic Acid Serum

Three molecular sizes of hyaluronic acid penetrate surface layers for visibly plumper, bouncier skin and overall deep hydration. 30 ml

222-488-8
reg. 62.00
34.99

This gel cream has a weightless feel!

Gel Cream

The water-like gel absorbs instantly making skin appear smoother, refreshed and plumped with hydration. 50 g **220-387-9**

reg. 48.00
26.99

Instant eye-opener!

De-Puffing Eye Serum

Eyes appear refreshed with hyaluronic acid, caffeine and raspberry antioxidant. Ceramic tip cools for an instant refreshing feeling. 15 ml **220-388-1**

reg. 48.00
26.99



SKIN CARE

FRAGRANCE-FREE FORMULA suitable for sensitive skin

HYDRATE & PROTECT

Smartrepair™ technology, inspired by pioneering scientific research, fights the look of environmental age damage.

SPF 50

Anew SkinVincible Day Lotion Broad Spectrum SPF 50

With our highest SPF available. Targets dehydrated skin and wrinkles. Use AM. 30 g

223-650-8
reg. 56.00
32.99

see brighter skin instantly

Wake up to softer, smoother more vibrant-looking skin with our Anew Vitamin C Collection

FACE MASK

Overnight Radiant Mask

With vitamins C and E, powerful antioxidants that visibly improve skin texture and boost radiance. Leave on overnight. 50 ml

222-985-5
reg. 50.00
29.99



LIP MASK

Overnight Lip Mask

Enriched with antioxidant vitamin C and nourishing shea butter, this moisturizing mask conditions and treats lips. 20 g

222-985-6
reg. 48.00
21.99



PRIMING MOISTURIZER

Illuminating Priming Moisturizer

Instantly illuminates and hydrates your complexion for a healthy, radiant look. Wear alone or under makeup. 50 ml

221-940-4
reg. 48.00
26.99



FACIAL PEEL

Warming Peel

Dual exfoliation, with vitamin C flakes and natural seeds, gently buffs skin with a warming sensation when activated with water, opening pores to remove impurities. 100 ml

221-072-6
reg. 38.00
22.99



LIP SCRUB

Smoothing Lip Scrub

Enriched with antioxidant vitamin C and sugar crystals, this gentle scrub removes dead skin cells. 20 g

222-985-9
reg. 48.00
21.99



SKIN CARE



88% of women showed an improvement in under-eye clarity in 2 weeks.*

Brightening Eye Cream
Reduces the appearance of dark circles and leaves under-eye area looking brighter and more even-toned. 15 ml

221-940-3
reg. 48.00
LIMITED TIME OFFER
19.99

*Based on a clinical study.

ALL OVER RADIANCE!

Double up on **body illuminating formulas!**



Leaves skin looking luminous

Exfoliates for softer, more radiant-looking skin

Instantly hydrates and visibly brightens the look of skin



Anew Vitamin C Dry Body Oil
Quickly melts into skin to instantly hydrate and help keep skin feeling supple. 100 ml
222-985-3
48.00 or...

Anew Vitamin C Illuminating Body Serum
With vitamins C and E, panthenol and sunflower seed oil. Visibly improves skin texture and helps skin retain essential moisture. 200 ml
222-985-4
48.00 or...

Isa Knox Anew Clinical Revitalize & Reveal Resurfacing Lotion for Body
Boosts skin's natural exfoliation process with lactic acid and moisturizes with shea butter to help visibly smooth rough, bumpy and crepey skin. 150 ml
223-261-2
48.00 or...

CHOOSE ANY 2 FOR 45.00
To get the 2 FOR price, please order in multiples of 2.

rev up your regimen with BOOSTERS

Small but mighty, this superlight skin care powerhouse, Isa Knox LXNEW Clinical Booster, has a high concentration of a single ingredient or two to target specific concerns.



Clinical Booster Moisture Lock
Instant hydration that lasts for 72 hours. 30 ml
223-425-2
reg. 56.00
32.99

Clinical Booster Pore Perfector
Visibly reduces pores and blemishes in 15 minutes. 30 ml
223-425-0
reg. 56.00
32.99

Clinical Booster Microbiome Balance
Visibly reduces redness in 15 minutes so skin looks healthier. 30 ml
223-425-1
reg. 56.00
32.99

the super exfoliator GLYCOLIC ACID

With the smallest molecules of AHAs to penetrate the outer skin layer, formulas with it help minimize the look of fine lines, discoloration and dullness so skin looks smoother, fresher and more radiant.

Advanced Wrinkle Corrector
In just two weeks, wrinkles appear reduced. 50 ml
223-262-0
reg. 56.00
32.99

Resurfacing Expert Smoothing Fluid
79% as effective as a pro micro-dermabrasion without the same irritation.*
30 ml 223-188-4
reg. 62.00
38.99

*In 6 out of 8 attributes tested over a 7-week period.



SKIN CARE

THE SKIN PLUMPER COLLAGEN

Collagen named from the Greek word “kólla,” which means glue, it’s skin’s **strength-building protein**.

In two weeks, wrinkles are significantly diminished, and skin appears firmer looking, more elastic.

Isa Knox Anew Clinical Collagen Booster™ Rejuvenating Serum Ampoules

With a powerful peptide blend. Vegan. Hypoallergenic. Clinically/dermatologist-tested. Use 1 ampoule each AM & PM. 60 ampoules, 0.22 ml each.
221-391-4
reg. 88.00
69.99



At-home skin-resurfacing alternative to microdermabrasion and microneedling procedures.

Isa Knox Anew Clinical Collagen Booster™ Microneedling Polisher

A combination of gentle exfoliators polishes away dull skin cells, diminishes the look of fine lines and wrinkles, and improves the appearance of pores. Use PM up to 3X per week. 50 ml
221-459-9
reg. 48.00

**LIMITED
TIME OFFER
19.99**

CLEANSERS

Cleansing helps eliminate excess oil, debris and makeup while refreshing skin. Make sure to thoroughly cleanse skin AM and PM in order to clear away dead skin cells and unclog pores.



Melts away impurities

Restores moisture

Eliminates excess oil

Rebalances skin

Isa Knox LXNEW Clean 2-in-1 Exfoliating Cleansing Balm

Exfoliating cleansing balm enriched with panthenol (vitamin B5) and bamboo stem powder. Use with spatula (included). 100 ml **222-986-3** reg. 42.00 **36.99**

Isa Knox LXNEW Clean Nourishing Cream Cleanser

Luxurious cream cleanser infused with panthenol (vitamin B5) and soothing rosemary and soapwort extracts. 150 ml **222-986-2** reg. 18.00 **14.99**

Isa Knox LXNEW Clean Soothing Whipped Oil Cleanser

Gentle whipped oil formula contains panthenol (vitamin B5) and aloe. Mild amino acid-based ingredients derived from coconut. 150 ml **223-124-6** reg. 24.00 **18.99**

Isa Knox LXNEW Clean Balancing Gel Cleanser

Invigorating gel-to-foam cleanser with moisturizing panthenol (vitamin B5) rebalances the skin. Mild amino acid-based ingredients derived from coconut. 150 ml **222-986-6** reg. 18.00 **14.99**

EXFOLIATE & SOFTEN

Flexible silicone pads gently massage for soft, clean skin.



Dual-textured bristles and nubs for a deeper clean and handles provide a good grip



Set of 2

✦ Silicone Cleansing Pads
2 flexible silicone pads feature handles for better grip. Apply cleanser to face, then gently massage skin with the pad to remove impurities. Each, 6 x 5 x 1 cm **222-278-6** **6.99** the set or...

ONLY 2.99
WITH EVERY PURCHASE FROM PAGES 78-123

(excluding cleansing pads) **limited quantities**

RICE WATER

Rice water, the milky white water obtained from rinsing rice, is enriched with **vitamins A, B and E, ceramide and minerals** to help skin feel moisturized and look radiant.

Gentle exfoliation leaves skin looking radiant



Gently removes makeup residue without irritating skin

Dry, sensitive and normal skin.

The Face Shop Rice Water Bright Foaming Cleanser

Cleanses and moisturizes in one. Lathers up into a creamy foam. With rice water and soapwort extract that leave skin looking clear and bright.

300 ml **221-900-0**
reg. 19.00
16.00

Suitable for all skin types.

The Face Shop Rice Water Bright Rice Bran Gentle Exfoliating Cleanser

Daily scrub with organic rice bran powder, bran oil and hydrated silica.

300 ml **223-093-3**
reg. 23.00
19.00

ACTIVATING MASSAGER

Stimulates circulation and helps promote the absorption of creams



Rotates 360°



SKIN CARE



Eclat D'or Youth Activating Massager

Chrome-plated roller deeply kneads the curvature of your face and décolletage to help revive and tighten tired, stressed skin. After applying your serum, grip handle and gently roll upward and outward over forehead, cheeks and neck. 15 cm L.

221-932-0
reg. 70.00
55.00

The Face Shop Rice Water Bright Facial Massage Cream

Moisturizes dry skin, helps visibly brighten complexion and helps boost elasticity and radiance. After cleansing, massage into skin. Use 2-3 times a week. 200 ml **224-113-9**
reg. 34.00

LIMITED TIME OFFER
19.99

THE FACE SHOP

Smooth Exfoliating Body Spray

Convenient body spray gently exfoliates dead skin cells. Formulated with mung bean, black bean and rice extracts to smooth, moisturize and cleanse skin. 300 ml **223-093-2** reg. 17.99 **14.99**



Lightly spray and rub for easy exfoliation

Smile Foot Mask

Contains highly moisturizing urea, shea butter and collagen, plus peppermint oil for a refreshing sensation. Perfect for tired feet. Contains 2 single-use foot masks - 1 pair.

223-093-1
reg. 6.99
5.99



Disposable foot mask contains powerful, natural moisturizing ingredients

Rich Hand V Special Care Hand Mask

Delivers rich moisture and softness to dry rough hands. Disposable hand mask is coated with nourishing lotion that contains sunflower seed oil and urea to deliver instant moisturization, leaving dry hands feeling smooth and supple. Contains 2 single-use gloves - 1 pair.

223-093-4
reg. 6.00
4.50



Smile Foot Exfoliating Cream

A unique 2-in-1 daily foot exfoliating cream that instantly removes dead skin cells and delivers a soothing effect. This gentle formula contains urea, a natural moisturizing ingredient, which leaves feet feeling soft and hydrated. Wipe off with towel after use. 120 ml **223-093-0** reg. 17.99 **14.99**

Remove dead skin cells without having to rinse



JEJU ALOE

Fresh Soothing Foam Cleanser

With aloe, panthenol, and other refreshing herbal extracts such as cica, camellia leaf, licorice root and rosemary. 150 ml **224-113-3** reg. 11.99 **9.99**



Fresh Ice Soothing Gel

3-in-1 gel with aloe vera extract. Use as a moisturizer, soothing after-sun care or as a facial mask. Can be refrigerated for more effective soothing results. Apply to dry, sensitive areas of face and body. 300 ml **223-093-5** reg. 16.00 **12.99**



Fresh Ice Soothing Face Mask

Can be refrigerated for enhanced cooling. Soothes sun irritation. Refreshing and non-sticky. Apply sheet mask after cleansing, leave on for 10 minutes and gently pat remaining cream into face. One single-use mask. **223-093-6** reg. 6.00 **5.00**



Fresh Soothing Mist

Instantly soothing and cooling facial mist for face or body, with 90% aloe vera extract. Oil-free and quickly absorbed. After cleansing, spray wherever skin feels dry. 130 ml **222-337-3** reg. 23.00 **18.99**



CLEARSKIN® your ally against acne

Use loop end to remove whiteheads



Use flat end to remove blackheads

Blackhead Remover Tool
Stainless steel. 12 cm L.
221-822-2
reg. 9.00
5.99

Clears, reduces and helps prevent acne blemishes



Professional Deep Pore Cleansing Scrub
Contains our exclusive Oil Control System. Exfoliates pores; leaves skin feeling cool, clean and healthier-looking.
125 ml **115-002-9**
reg. 14.00
9.99

Use 2-3 times a week

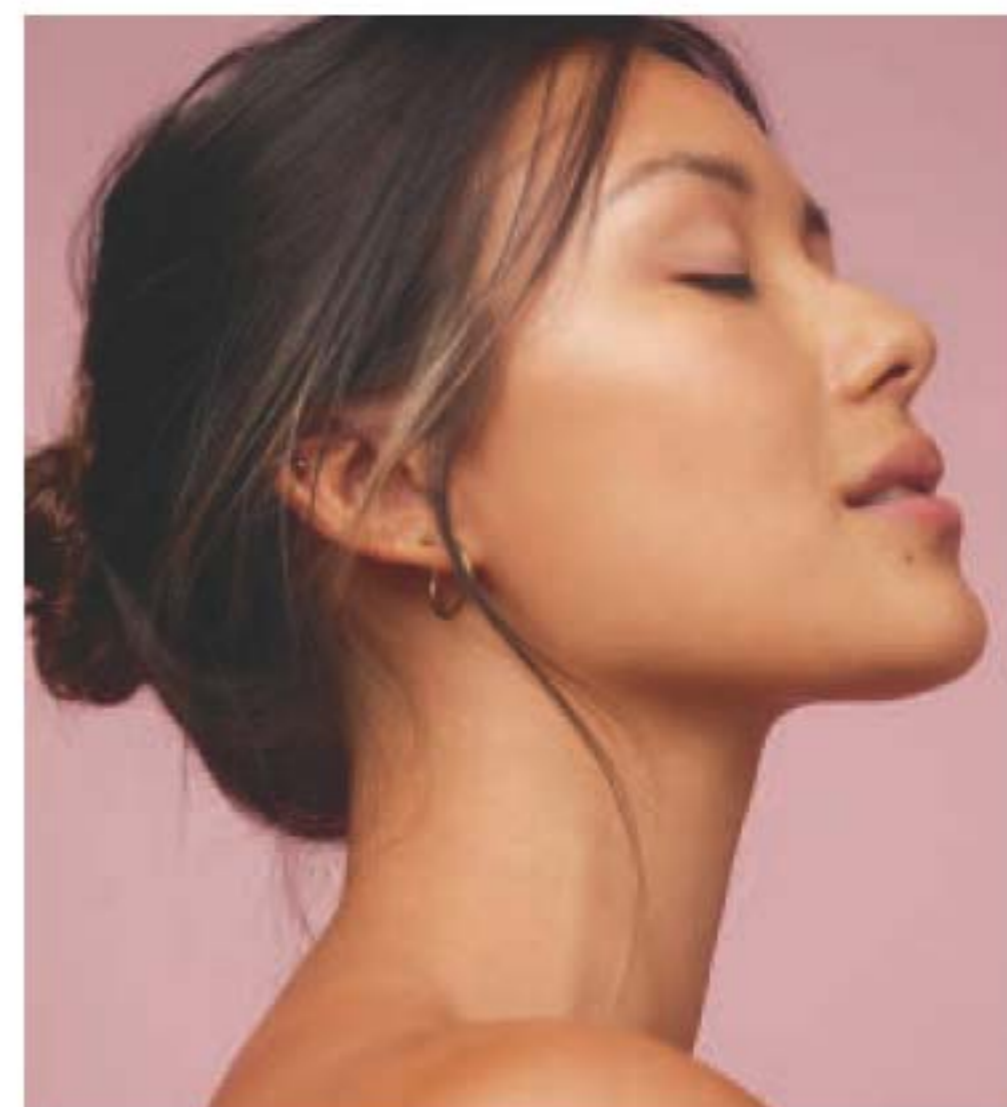


Pore Penetrating Black Mineral Mask
Unique formula with oil-absorbing clay. Mask changes colour and cools while it tightens! 75 ml
409-246
reg. 14.00
8.99

Instantly strips away pore-clogging dirt and oil



Professional Liquid Extraction Strip*
Apply on T-zone (nose, forehead, chin) for deep cleansing. Use 1-2 times a week.
30 ml **410-586**
reg. 23.00
12.99



your skin care SOLUTION

Helps soften rough, dry skin for long-lasting smoothness.



Add rich moisture and protects with SPF 15



Helps reduce the appearance of shine



SOLUTIONS

Rich Moisture Comforting Nourishing Cream

Hypoallergenic. Dermatologist-tested. Non-comedogenic.
150 ml **222-387-4**
reg. 10.00
8.99

Tinted Moisture Shield SPF 15

Adds rich moisture to dry skin and gives skin a sheer hint of colour for a sun-kissed glow.
50 ml **223-653-4**
reg. 14.00
8.99

Oil-Balancing Cream

Refreshing gel-cream eliminates excess shine and minimizes the appearance of pores. 50 ml **222-703-3**
reg. 19.00
10.49

FARM RX

A VEGAN SKIN CARE COLLECTION

CHOOSE THE CREAM THAT'S RIGHT FOR YOU!



92%
NATURAL

Visibly reduce the look of wrinkles



FOR FACE

Bakuchiol Cream
Formulated with a blend of botanical extracts to visibly reduce the look of wrinkles and improve skin texture for a more youthful look. Vegan formula is hypoallergenic, dermatologist-tested and suitable for sensitive skin. 90 ml **224-113-1**
reg. 63.00
47.99

86%
NATURAL

Helps soothe and cool skin



COOLING HYDRATION

Super Greens Cooling Gel
Use as a lightweight moisturizer to help soothe and cool skin, or apply thicker, after serum, as a mask to hydrate overnight as needed. 90 ml **223-642-5**
reg. 53.00
39.99

98%
NATURAL

Locks in essential nourishing moisture



NOURISHING MOISTURE

Super Greens Multivitamin Moisture Cream
Locks in essential nourishing moisture. Use daily after cleansing, serums and treatments. 90 ml **223-642-6**
reg. 53.00
39.99

STRICT BLACKLIST BANNING:

- parabens
- phthalates
- mineral oil
- sulfates
- synthetic dyes/fragrances
- animal testing

NEW

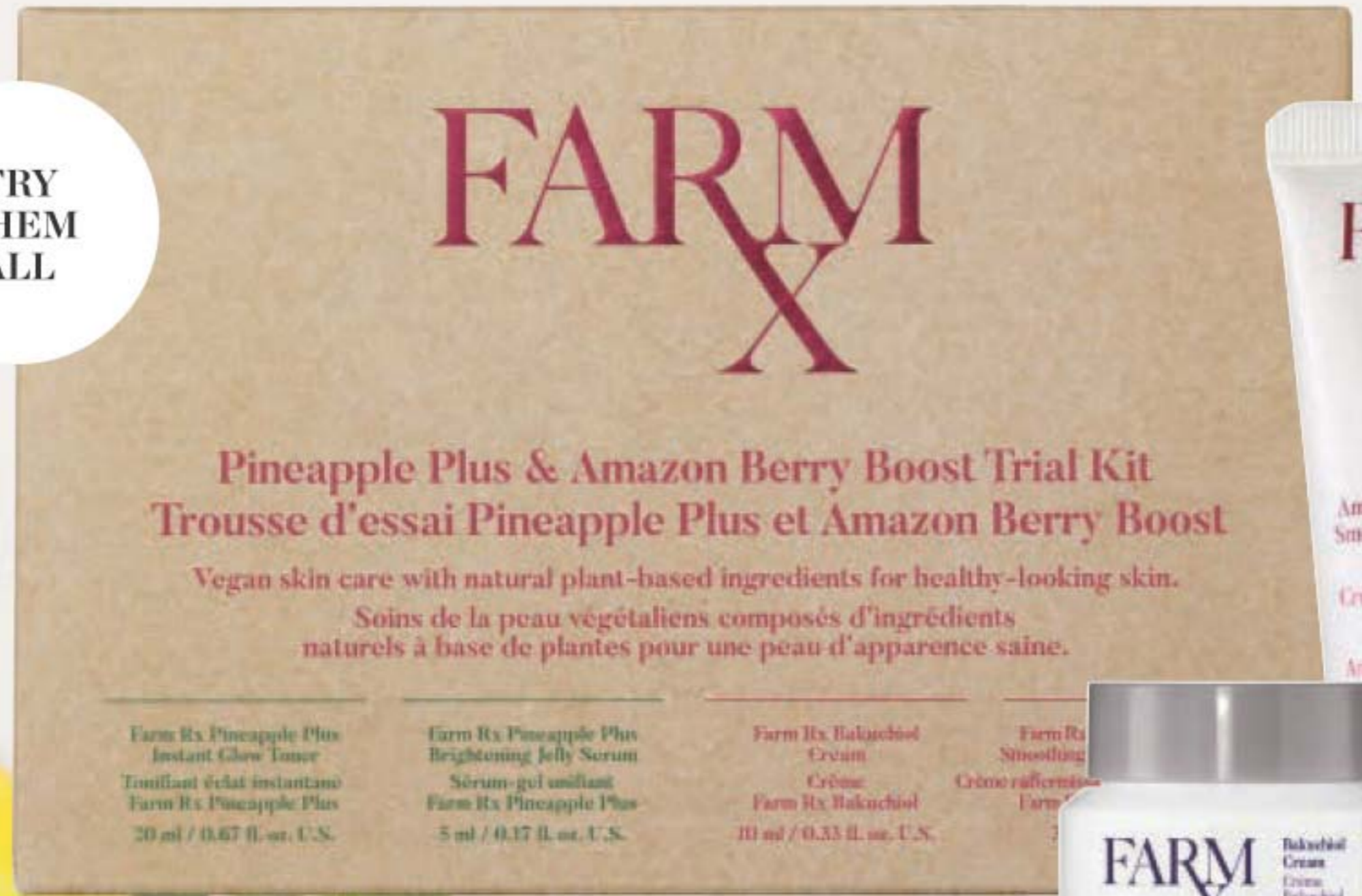
FARM RX GIVE YOUR SKIN A FRESH PINEAPPLE GLOW

REVEAL THE LOOK OF SKIN'S NATURAL GLOW

With **pineapple extract**, containing natural alpha hydroxy acid (AHA). It also includes **Five Fruits Complex**, an antioxidant blend of watermelon, papaya, fermented pomegranate, tomato and lemon extracts.

FULL SIZES
coming next
brochure

TRY
THEM
ALL



NEW

Farm Rx Pineapple Plus & Amazon Berry Boost Trial Kit

Vegan skin care with natural plant-based ingredients for healthy-looking skin. Includes:

- Bakuchiol Cream 10 ml
- Amazon Berry Boost Smoothing & Firming Body Cream 30 ml
- Pineapple Plus Instant Glow Toner 20 ml
- Pineapple Plus Brightening Jelly Serum 5 ml

225-007-7
reg. 27.99

19.99

4-piece

re:tune

Beauty is more than skin deep. It starts at your very core. re:tune helps you feel good on the inside so you look great on the outside. Key supplements help deliver nutritional support to help maintain a healthy, radiant appearance.



A GOOD NIGHT'S SLEEP is an essential part of your beauty regimen

Restful Sleep

Naturally-sourced non-habit-forming supplement helps reduce the time it takes to fall asleep. With magnesium, hops, chamomile and melatonin. 60 vegetarian capsules. **223-087-0** reg. 19.00 **14.99**

Helps reset your body's sleep-wake cycle



Helps re-set the body's sleep-wake cycle
Aide à rétablir le cycle veille-sommeil
60 VEGETARIAN CAPSULES / 60 CAPSULES VÉGÉTARIENNES



Helps to temporarily support a feeling of fullness

FEEL FULLER, LONGER

Hunger Block
60 vegetarian capsules.
223-086-6
reg. 42.00

LIMITED TIME OFFER
14.99

re:tune

Beauty is more than skin deep. It starts at your very core.



helps to
maintain
**HEALTHY
HAIR,
SKIN AND
NAILS**

Helps in the
development
and maintenance
of bones, cartilage,
teeth and/or gums



Hair, Skin & Nail Health

Helps to maintain immune function. Source of antioxidants that help reduce cell damage caused by free radicals. 60 tablets. **223-086-3** reg. 55.00

**LIMITED
TIME OFFER
24.99**

JEWELLERY TRENDS SPOTTED

Sharpen your instincts for animal-inspired jewellery.



Necklace and earring set



Ring sizer, page 140



NEW

Alluring Animal Shell Collection

Animal print patterned shells with goldtone.

Necklace and Earring Gift Set

Chain, 42 cm L with 9 cm extender. Mother-of-pearl pendant, 6 cm L. Pierced drops, 4 cm L.

225-139-7
reg. 54.99
42.99 the set

Coil Bracelet

Brown leather-like cord. One size fits most. **225-140-1**

reg. 28.99
21.99

Ring

3 cm diam with cz accents.

6 **225-139-8**
8 **225-139-9**
10 **225-140-0**
reg. 18.99
14.99



❖ Watch

Animal-print strap, 23 cm L. Jet black dial, 30 mm diam.

225-140-7
reg. 69.99
55.99

SMOKE & MIRRORS

Jet beads, smoky glass and reflective hematite mingle for dark glamour.



Ring sizer, page 140

NEW

Metallic Monochrome Collection

Black and hematite-coloured beads and glass beads with silvery accents.

Earrings

Pierced drops,
3 cm L. **225-139-0**
reg. 18.99
14.99

Stretch Bracelet

Stretches to fit most.
225-139-4
reg. 18.99
14.99

Ring

3 cm W.
6 **225-139-1**
8 **225-139-2**
10 **225-139-3**
reg. 18.99
14.99



81 cm L necklace



Layered Necklace

81 cm L with 9 cm extender; 71 cm L (shortest strand).
225-138-7
reg. 49.99
38.99

TEXTURAL SHINE

A modern collection of sculptural and hammered metals.

Necklace and earring set

NEW

Sculptural Silvertone Collection
Silvertone with textured hammered finish.

Necklace and Earring Set

Chain, 42 cm L with 9 cm extender.
Pierced earrings, 3 cm L.

225-133-1
reg. 37.99
29.99 the set



❖ **Hammered Watch**
Hinged closure.
One size fits most.
Face, 27 x 33 mm
225-218-7
reg. 74.99
59.99

Bracelet
One size fits most.
225-133-5
reg. 24.99
19.99

Ring
6 **225-133-2**
8 **225-133-3**
10 **225-133-4**
reg. 16.99
13.99



Ring sizer, page 140

**COLLECTION
AVAILABLE
IN SILVERTONE
AND GOLDTONE**

Necklace
and
earring
set

Fine Filigree Collection
With cz accent stones.

Necklace and Earring Set
Necklace, 42 cm L with
9 cm extender. Pendant,
5 cm L. Pierced earrings,
4 cm L drop.

Goldtone **224-847-1**
SILVERTONE **224-847-2**
reg. 32.99
24.99 each set

Stretch Bracelet
Stretches to fit most.
Goldtone **224-847-7**
SILVERTONE **224-847-6**
reg. 28.99
21.99 each

Ring
Goldtone SILVERTONE
6 **224-848-3** 6 **224-848-0**
8 **224-848-4** 8 **224-848-1**
10 **224-848-5** 10 **224-848-2**
reg. 14.99
11.99 each



Ring sizes, page 140

NEW

**Chunky Chain
Rose Goldtone
Collection**

Oversized chain links
in rose goldtone.

Necklace
42 cm L with 9 cm
extender. **225-070-4**
reg. 45.99
35.99

Bracelet
20 cm L.
225-070-6
reg. 24.99
19.99

Ring
6 **225-070-7**
8 **225-070-8**
10 **225-070-9**
reg. 16.99
13.99

Earring Pack
Six pairs
of pierced
earrings, clear
stone accents.
Includes: 1 cm
hoop, chain-link
drop and cz
stud earrings.
225-070-5
reg. 24.99
**19.99 the
pack**



6-pair
earring
pack

AUTUMN INSPIRATIONS

NEW

Autumnal Charm Collection

Goldtone, rose goldtone and silvertone with pavé stones.

Pendant Necklace

42 cm L with 9 cm extender. Pendant, 3 cm L. reg. 24.99 **19.99** each

Earring Pack

Set of 3 pierced studs. reg. 18.99 **14.99** each set

Cord Bracelet

Pull-through closure. One size fits most. Motif charm, 2 cm L. reg. 24.99 **19.99** each



Owl/Silvertone
225-253-5



Pumpkin/Goldtone
225-253-7



Leaf/Rose Goldtone
225-253-6

3-pair earring packs



Owl/Silvertone
225-254-1



Pumpkin/Goldtone
225-254-3



Leaf/Goldtone
225-254-2



Owl/
Silvertone/
Dark-brown Cord
225-253-8



Leaf/
Rose Goldtone/
Red Cord
225-254-0



Pumpkin/
Goldtone/
Light-brown Cord
225-253-9



Blessed
silvertone with
blue pendant
225-099-2

Thankful
goldtone with green
pendant 225-099-0

Cherished
rose goldtone
with purple
pendant
225-099-1

NEW

Naturally Inspired Necklace
Coloured stones and beads
with metal charms. 42 cm L
with 9 cm extender.
reg. 28.99
21.99 each

Naturally Inspired Bracelet
Coloured beads with metal
charms. Stretches to fit most.

- A. Blessed**
Sky blue and light blue beads with
silvertone accents
225-099-5
- B. Thankful**
Green and brown beads with
goldtone accents 225-099-3
- C. Cherished**
Purple and dark red beads with
rose goldtone accents 225-099-4

reg. 24.99
19.99 each set



2-bracelet
sets

COSMIC CLASSICS

The heavenly look
of pearls align with
the symbols of
the zodiac.



Pretty Pearly Zodiac Stretch Bracelet
Pearlesque beads with shell accents and goldtone astrology symbols.
One size fits most. reg. 18.99
14.99 each



FALL FOR PAVÉ

Glass stones in autumnal jewel tone colours create a rich, warm look for fall.



Ring sizer, page 140



NEW

Autum Pavé Collection

Multicoloured glass stones set in goldtone.

Cuff Bracelet

One size fits most.

225-134-1
reg. 28.99
21.99

Huggie Earrings

2 cm diam.
Pierced.

225-133-7
reg. 16.99
13.99

Ring

1 cm L.

6 **225-133-8**
8 **225-133-9**
10 **225-134-0**
reg. 16.99
13.99

Necklace

42 cm L
with 9 cm
extender.
Pendant, 2 cm L.

225-133-6
reg. 28.99
21.99



NEW

Sparkling Clusters Collection

Clear glass stones set in silvertone.

Collar Necklace

38 cm L with
9 cm extender.

225-134-3
reg. 32.99
24.99

Band Ring

6 **225-134-6**
8 **225-134-7**
10 **225-134 8**
reg. 16.99
13.99

Bracelet

Adjustable,
pull-cord; one
size fits most.

225-134-5
reg. 24.99
19.99



Ring sizer, page 140

NEW

Very Violet Cushion Cut Collection

Amethyst-coloured stones with crystal accents set in rose goldtone.

Necklace and Ring Set

Necklace, 42 cm L with 9 cm extender. Stone drop, 3 cm. Ring, 1 cm stone.

Order by ring size:

6 **225-091-0**

8 **225-091-1**

10 **225-091-2**

reg. 32.99

24.99 the set

Drop Earrings

3 cm drop. Pierced.

225-091-3

reg. 18.99

14.99

Bracelet

18 cm L tennis bracelet with extender clasp.

225-125-5

reg. 24.99

19.99

Necklace and ring set

PURPLE PASSIONS

Estate-jewellery charm adds to the glamour of a classic cushion-cut collection.

Sunset Shimmer Collection

Goldtone with pink and orange stone accents.

Statement Ring

3 cm L.

6 **224-952-2**

8 **224-952-3**

10 **224-952-4**

reg. 18.99

14.99

Pendant Necklace

Chain, 42 cm L with 9 cm extender.

Pendant, 4 cm L.

224-952-1

reg. 24.99

19.99

Drop Earrings

Pierced drops, 4 cm L.

224-952-5

reg. 18.99

14.99



Necklace and earrings set

3-ring set

Ring sizer, page 140

Verdant Green Pavé Collection

Emerald-coloured stones set in goldtone.

Hoop Earrings

3 cm diam. Pierced.

224-800-1

reg. 20.99

15.99

Necklace and Earring Set

Chain, 42 cm L with 9 cm extender.

Pendant, 3 cm diam. Pierced studs.

224-799-8

reg. 27.99

20.99 the set

3-Piece Ring Set

Set of 3 rings.

6 **224-800-2**

8 **224-800-3**

10 **224-800-4**

reg. 23.99

18.99 the set

NEW

Sterling Silver Magnificent Marcasite Collection
Genuine marcasite and sterling silver.

Earrings
Pierced drops, 3 cm L. **225-131-3**
89.99

Necklace
43 cm L with 3 cm extender. Pendant, 2 cm L. **225-063-7**
89.99

Ring
1 cm L.
5 **225-063-9**
6 **225-064-0**
7 **225-064-1**
8 **225-064-2**
9 **225-064-3**
10 **225-064-4**
84.99

Genuine marcasite

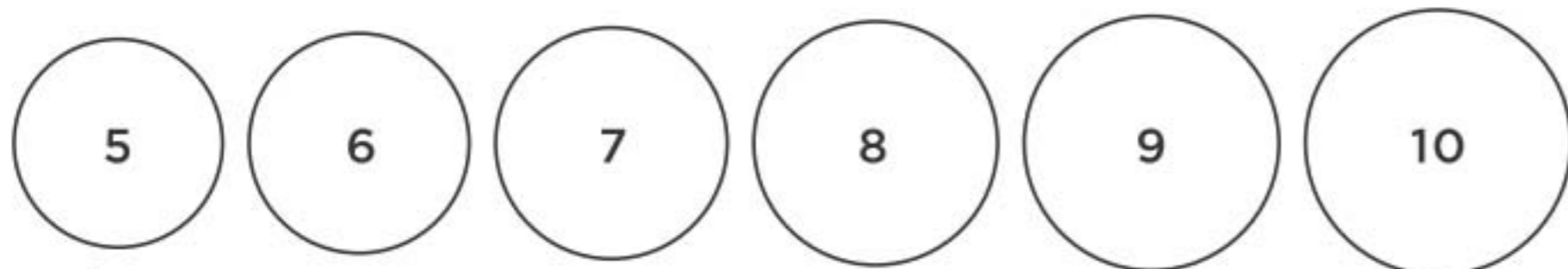


Sterling Silver Simulated Opal Collection
Simulated opal with cz accents.

Halo Necklace
46 cm L with 3 cm extender. Pendant, 1 cm L. **224-681-1**
84.99

Stud Earrings
6 mm L. Pierced. **224-681-3**
69.99

FIND YOUR RING SIZE match your ring to one of these circles



stainless steel with
GENUINE ABALONE

The beauty of the sea melds with the strength and lustre of steel for designs that rival the finest collections.



NEW

Stainless Steel Abalone Leaf Collection
Genuine abalone set in stainless steel.

Earrings
Pierced drops, 4 cm L. **225-062-4**
64.99

Necklace
46 cm L with 3 cm extender and 3 cm L pendant. **225-062-2**
55.99

Bracelet
Includes three charms: 3 cm abalone leaf, 2 cm metal leaf, 1/2 carat weight equivalent cz stone. One size fits most. **225-063-5**
64.99



fall fashion
field guide

STUDIO
1886

Get ready for fall. Keep an eye open for changing colours, cozy textures and cooler silhouettes. It's time for prints, plaids and comfort. Autumn is in the air.

NEW

❖ Plaid Button Shirt

Button front plaid shirt with pockets, shirt-tail hem and long sleeves with tab details. Polyester. Centre back length: 70 cm on medium; 72 cm on 1X. Machine wash, line dry.

XS (0-2) **225-105-0**

S (4-6) **225-105-1**

M (8-10) **225-105-2**

L (12-14) **225-105-3**

XL (16) **225-105-4**

54.99

1X (18W-20W) **225-107-5**

2X (22W-24W) **225-107-6**

3X (26W-28W) **225-107-7**

59.99

NEW

❖ Cold Shoulder Grommet Top

Blue long sleeve top with cuffs, cold shoulder with grommet details and boat neckline. Polyester/rayon/spandex. Centre back length: 60 cm on medium; 65 cm on 1X. Machine was, dry flat.

XS (0-2) **225-094-3**

S (4-6) **225-094-4**

M (8-10) **225-094-5**

L (12-14) **225-094-6**

XL (16) **225-094-7**

49.99

1X (18W-20W) **225-094-8**

2X (22W-24W) **225-094-9**

3X (26W-28W) **225-095-0**

54.99



NEW**❖ Open Front Printed Cardigan**

Long, open-front, cardigan in an animal-print with 3/4-length sleeves.

Polyester/spandex. Centre back length: 94 cm on medium; 99 cm on 1X. Machine wash, line dry.

XS (0-2) **225-113-2**

S (4-6) **225-113-3**

M (8-10) **225-113-4**

L (12-14) **225-113-5**

XL (16) **225-113-6**

64.99

1X (18W-20W) **225-113-7**

2X (22W-24W) **225-113-8**

3X (26W-28W) **225-113-9**

69.99

Model is wearing 2-Pack Tees and Everyday 2-Pack Leggings sold on page 153.

follow
your
instincts

**NEW****❖ Long Sleeve Top with Lace Insets**

Rose coloured top with ruffle detail neckline. Button closure on back of neck. Lace inset on upper part of sleeves with elastic cuffs. Body: polyester. Lace: nylon/spandex. Centre back length: 65 cm on medium; 70 cm on 1X. Machine wash, line dry.

XS (0-2) **225-075-7** 1X (18W-20W) **225-076-2**

S (4-6) **225-075-8** 2X (22W-24W) **225-076-3**

M (8-10) **225-075-9** 3X (26W-28W) **225-076-4**

L (12-14) **225-076-0** **64.99**

XL (16) **225-076-1**

59.99

**NEW****❖ Mixed Print Dress**

Printed dress with elastic neckline and 3/4-length sleeves with elastic cuffs. Smocked waist with decorative tie on front. Rayon. Centre back length: 90 cm on medium; 94 cm on 1X. Machine wash, line dry.

XS (0-2) **225-112-4**

S (4-6) **225-112-5**

M (8-10) **225-112-6**

L (12-14) **225-112-7**

XL (16) **225-112-8**

69.99

1X (18W-20W) **225-112-9**

2X (22W-24W) **225-113-0**

3X (26W-28W) **225-113-1**

74.99



NEW

❖ **Plaid Zip Front Jacket**

Cozy plaid jacket with front zipper, long sleeves and standing collar. Fully lined. Body: cotton/polyester/acrylic/nylon. Lining: polyester. Centre back length: 66 on medium; 70 cm on 1X. Machine wash, dry flat.

XS (0-2) **225-120-0**

S (4-6) **225-120-1**

M (8-10) **225-120-2**

L (12-14) **225-120-3**

XL (16) **225-120-4**

84.99

1X (18W-20W) **225-120-5**

2X (22W-24W) **225-120-6**

3X (26W-28W) **225-120-7**

89.99

Model is wearing
Fall 4-Pack of Pocket Tees
sold oxn page 148.

bring
inside
comfort
outdoors



**2-PACK
TUNICS**

NEW

❖ **2-Pack Cutout Tunics**

Includes cinnamon and grey long sleeve tunics with neckline cutouts and shirt-tail hem. Polyester/rayon/spandex. Centre back length: 71 cm on medium; 76 cm on 1X. Machine wash, dry flat.

XS (0-2) **225-074-9**

S (4-6) **225-075-0**

M (8-10) **225-075-1**

L (12-14) **225-075-2**

XL (16) **225-075-3**

69.99 pack of 2

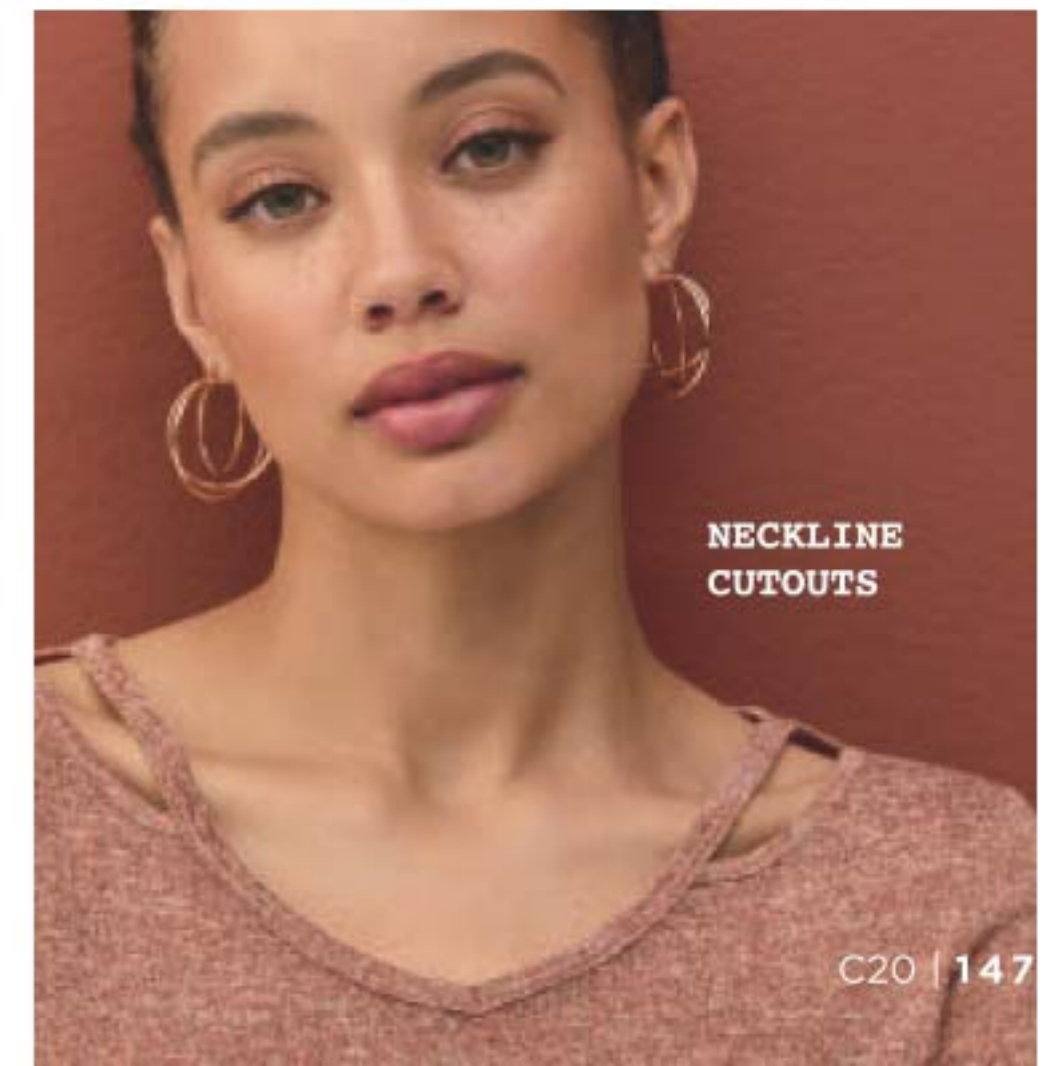
1X (18W-20W) **225-075-4**

2X (22W-24W) **225-075-5**

3X (26W-28W) **225-075-6**

74.99 the pack of 2

**NECKLINE
CUTOUTS**





NEW

❖ **Fall 4-Pack Pocket Tees**

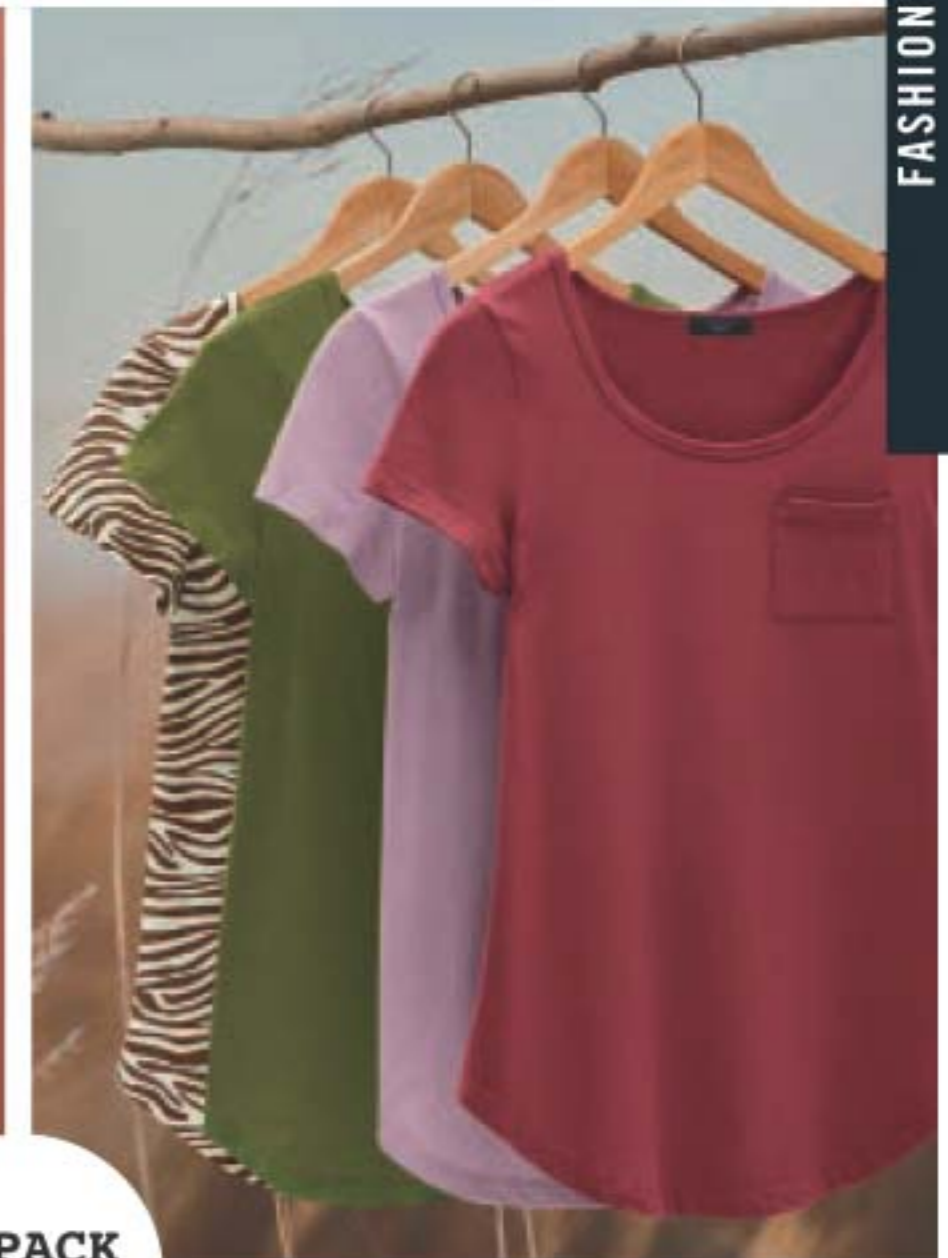
Set of four tees in red, mauve, olive, and animal print. Round neckline, chest pocket. Cotton/polyester. Centre back length: 66 cm on medium; 71 cm on 1X. Machine wash, dry flat.

- XS (0-2) **225-074-1**
- S (4-6) **225-074-2**
- M (8-10) **225-074-3**
- L (12-14) **225-074-4**
- XL (16) **225-074-5**

59.99
pack of 4

- 1X (18W-20W) **225-074-6**
 - 2X (22W-24W) **225-074-7**
 - 3X (26W-28W) **225-074-8**
- 64.99**
pack of 4

basics:
the natural
selection



**4-PACK
TEES**



Our Racerback Comfort Support Bra is the perfect fit for under our Waffle-Knit Top. Bra sold on page 162.

NEW

❖ **2-Piece Waffle Knit Set**

Olive green waffle knit top with long sleeves, draped neckline, and drawstring detail. Matching jogger style pant with side seam pockets, elastic waist and drawstring. Polyester/spandex. Centre back length on top: 66 cm on medium; 71 cm on 1X. Inseam, 69 cm on medium; 70 cm on 1X.

Machine wash, dry flat.

XS (0-2) **225-115-0**

S (4-6) **225-115-1**

M (8-10) **225-115-2**

L (12-14) **225-115-3**

XL (16) **225-115-4**

74.99 2-piece set

1X (18W-20W) **225-115-5**

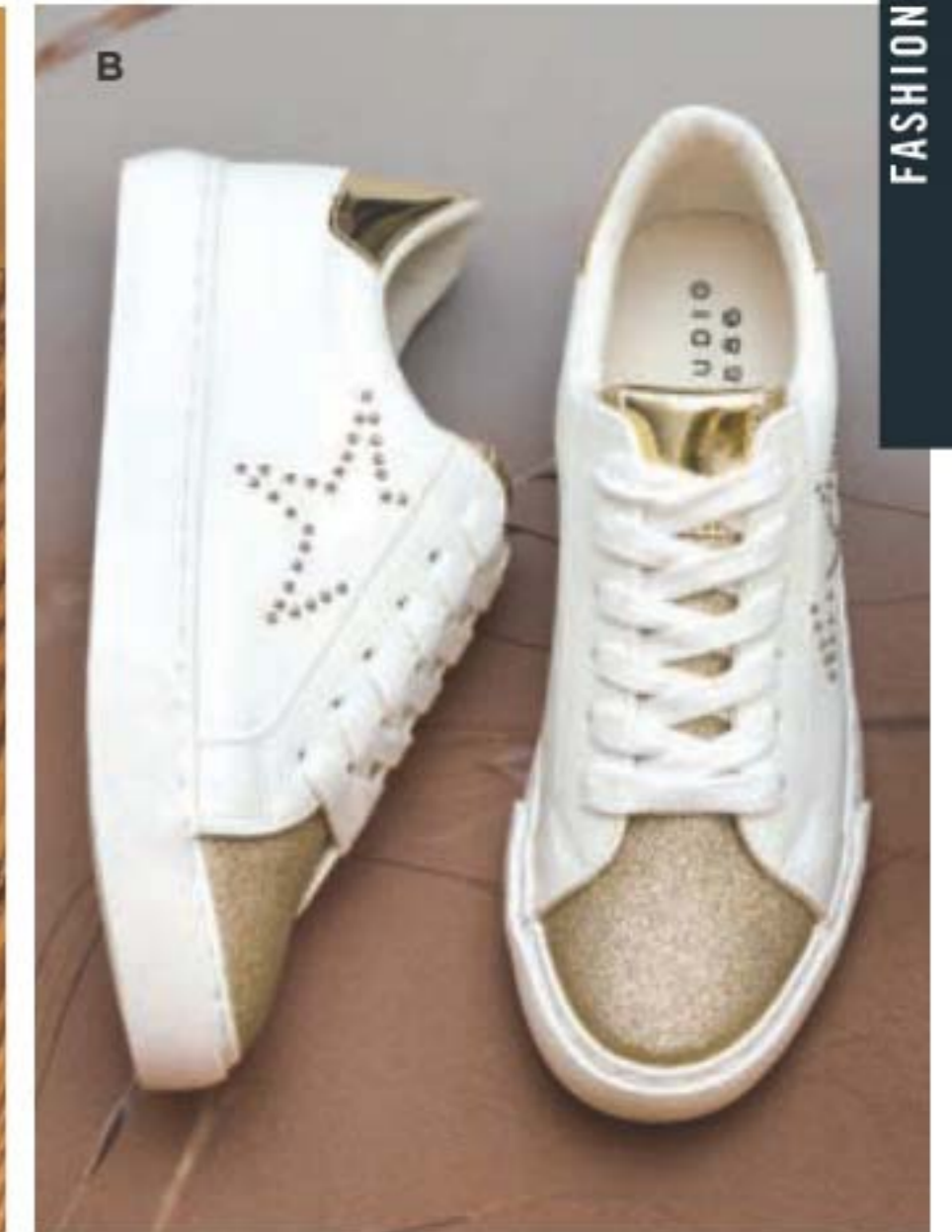
2X (22W-24W) **225-115-6**

3X (26W-28W) **225-115-7**

79.99 2-piece set

2-PIECE SET

warm up
to knits



ALL NEW

A. ❖ Embossed Loafers*

Black embossed flat loafers with goldtone buckle. Wavy cushion insoles for comfort. Man-made materials.

6M **225-117-2** 7M **225-117-3** 8M **225-117-4**
9M **225-117-5** 10M **225-117-6** 11M **225-117-7**

54.99

B. ❖ Glitter Star Sneakers*

White lace-up sneakers with studded star and gold glitter accents. Man-made materials.

6M **225-118-4** 7M **225-118-5** 8M **225-118-6**
9M **225-118-7** 10M **225-118-8** 11M **225-118-9**

49.99

C. ❖ Sherpa Trim Sneakers with Zipper Detail*

Tan lace-up sneakers with faux sherpa trim and functional side zippers. Man-made materials.

6M **225-117-8** 7M **225-117-9** 8M **225-118-0**
9M **225-118-1** 10M **225-118-2** 11M **225-118-3**

49.99

*Half sizes, order one size up.

seasonal style staples



HIS OR HERS
SLIPPERS

❖ **Classic Unisex Slippers**
His or hers slip-on slippers with faux-sherpa lining. Man-made materials.
24.99
each pair

Black	Tan	Grey
S (5-6) 222-511-1	S (5-6) 222-538-7	S (5-6) 223-494-8
M (7-8) 222-511-2	M (7-8) 222-538-6	M (7-8) 223-494-9
L (9-10) 222-511-3	L (9-10) 222-538-5	L (9-10) 223-495-0
XL (11-12) 222-511-4	XL (11-12) 222-538-4	XL (11-12) 223-495-1
XX L(13-14) 222-511-5	XXL (13-14) 222-538-3	XXL (13-14) 223-495-2

UNISEX SIZE CHART		
SIZE	WOMEN'S	MEN'S
S	5-6	—
M	7-8	5-6
L	9-10	7-8
XL	11-12	9-10
XXL	13-14	11-12



2-PACK
TEES

2-PACK
LEGGINGS

Models are
wearing shoes
sold on page 151.

❖ **2-Pack Crew-Neck Pocket Tees**
Includes black and white tees with rounded hem, crew neckline and chest pocket detail. Cotton/polyester. Centre back length: 66 cm on M; 71 cm on 1X. Machine wash, dry flat.
XS (0-2) **222-448-6** 1X (18W-20W) **222-449-1**
S (4-6) **222-448-7** 2X (22W-24W) **222-449-2**
M (8-10) **222-448-8** 3X (26W-28W) **222-449-3**
L (12-14) **222-448-9** **34.99 the pack of 2**
XL (16) **222-449-0**
29.99 pack of 2

❖ **2-Pack Everyday Leggings**
Includes black and grey full-length leggings with elastic waistband. Cotton/spandex. Inseam: 71 cm for all sizes. Machine wash, dry flat.
XS (0-2) **222-449-4** 1X (18W-20W) **222-449-9**
S (4-6) **222-449-5** 2X (22W-24W) **222-450-0**
M (8-10) **222-449-6** 3X (26W-28W) **222-450-1**
L (12-14) **222-449-7** **57.99 the pack of 2**
XL (16) **222-449-8**
52.99 the pack of 2



TANKS
REVERSE
FROM
V-NECK
TO SCOOP
NECK

2-PACK
TANKS

❖ **2-Pack Reversible Tanks**
Includes black and white reversible tanks. Cotton/polyester. Centre back length: 66 cm on M; 70 cm on 1X. Machine wash, dry flat.
XS (0-2) **223-010-6** 1X (18W-20W) **223-011-3**
S (4-6) **223-010-7** 2X (22W-24W) **223-011-4**
M (8-10) **223-010-8** 3X (26W-28W) **223-011-5**
L (12-14) **223-010-9** **34.99 the pack of 2**
XL (16) **223-011-0**
29.99 the pack of 2

FASHION SIZE CHART			
SIZE	BUST	WAIST	HIP
XS 0/2	80 - 83 CM	62 - 65 CM	84 - 86 CM
S 4/6	85 - 89 CM	67 - 71 CM	90 - 94 CM
M 8/10	93 - 97 CM	75 - 79 CM	98 - 102 CM
L 12/14	100 - 104 CM	83 - 86 CM	105 - 109 CM
XL 16	108 - 112 CM	90 - 94 CM	113 - 117 CM
1X 18W/20W	118 - 123 CM	99 - 104 CM	122 - 127 CM
2X 22W/24W	128 - 133 CM	109 - 114 CM	132 - 137 CM
3X 26W/28W	138 - 144 CM	119 - 124 CM	142 - 147 CM

Visit avon.ca/fitguide for additional size and fit information

SKECHERS



SOFT
CANVAS
UPPERS
WITH
FRAYED
DETAILS

DECORATIVE
KNOTTED-LACE
FRONT

NEW

❖ Skechers® BOBS - Be Extra Cute*
Memory Foam™ cushioned comfort
insoles. 1 cm platform midsoles. Flexible
traction outsoles. Machine washable.
100% vegan man-made materials.

79.00 each pair
limited quantities

Chestnut			
6M	225-214-9	9M	225-215-2
7M	225-215-0	10M	225-215-3
8M	225-215-1	11M	225-215-4
Black			
6M	225-214-3	9M	225-214-6
7M	225-214-4	10M	225-214-7
8M	225-214-5	11M	225-214-8

*Half sizes, order one size up.

walking on a cloud



LEATHER AND
SYNTHETIC
UPPERS WITH
AN ATHLETIC
MESH TRIM

3 CM HIDDEN WEDGE WITH 4 CM HEELS

NEW

❖ Skechers® Uno Wedge Fit - Off White*
Air-Cooled Memory Foam™ footbeds and
Skech-Air™ visible air-cushioned midsoles.
Rubber traction outsoles. Man-made
materials.

115.00
limited quantities

6M	225-217-3
7M	225-217-4
8M	225-217-5
9M	225-217-6
10M	225-217-7
11M	225-217-8

NEW

❖ **Comfort Compression Heart Design Socks**

Blue socks with black heartbeat design. Large welt for comfort. Fits shoe sizes 6-10. Polyester/nylon/cotton/spandex. Machine wash, line dry. **225-262-0**

13.99 a pair
limited quantities

8-15 MMHG
LIGHT
COMPRESSION



ANTIMICROBIAL
PROPERTIES
HELP PREVENT
BACTERIAL
AND FUNGAL
GROWTH



all day comfort

Compression socks are ideal for travel, and standing or sitting for long periods of time.

NEW

❖ **Comfort Compression Contrast Toe & Heel Socks**

Black socks with contrasting orchid coloured toes and heels. Fits shoe sizes 6-10. Polyester/cotton/spandex. Machine wash, line dry. **225-262-2**

13.99 a pair
limited quantities



LARGE
WELT FOR
COMFORT

8-15 MMHG
LIGHT
COMPRESSION

ANTIMICROBIAL
PROPERTIES
HELP PREVENT
BACTERIAL
AND FUNGAL
GROWTH

NEW

❖ **Comfort Compression Cat Design Socks**

Black socks with grey cat head and red paw prints. Large welt for comfort. Fits shoe sizes 6-10. Polyester/cotton/spandex. Machine wash, line dry. **225-262-1**

13.99 a pair
limited quantities

8-15 MMHG
LIGHT COMPRESSION



ANTIMICROBIAL
PROPERTIES
HELP PREVENT
BACTERIAL
AND FUNGAL
GROWTH



NEW

❖ **Patterned Crew Socks**

Lightweight crew socks. Fits shoe sizes 6-10. Polyester/cotton/spandex. Machine wash and dry. **225-263-7** **6.99 a pair** limited quantities



TONE ON TONE DESIGN

NEW

❖ **Cardinal Song Sock**

Fits shoe sizes 6-10. Polyester/cotton/spandex. Machine wash and dry. **225-262-5** **6.99 a pair** limited quantities



GREY CREW SOCKS WITH CARDINAL GRAPHICS

show off your personality

in fun, patterned styles.

NEW

❖ **Cat Walk Sock**

Fits shoe sizes 6-10. Polyester/cotton/spandex. Machine wash and dry. **225-262-6** **6.99 a pair** limited quantities

BLACK CREW SOCKS WITH CAT HEAD GRAPHICS



crew socks

Treat your feet to comfort and style.

NON-BINDING SOCKS SUITABLE FOR DIABETICS

NEW

❖ **3-Pack Roll Top Non-Binding Socks**

Cushioned footbed with extra padding for comfort. With anti-microbial properties. Fits shoe sizes 6-10. Polyester/spandex. Machine wash and dry. **225-261-8**

19.99 the 3-pair pack limited quantities



3-PAIR PACK

WITH ANTI-MICROBIAL PROPERTIES

NON-BINDING TOP BAND PROVIDES A COMFORTABLE FIT AND PROMOTES CIRCULATION

MOISTURE-WICKING FABRIC KEEPS FEET DRY TO HELP PREVENT SKIN INFECTION

TWO COLOURS TO CHOOSE FROM!

SMOOTH TOE HELPS PREVENT RUBBING AND BLISTERS

Blue/Orchid
225-269-5

Grey/Pink
225-261-9

NEW

❖ **Non-Binding Comfort Striped Socks**
Cushioned footbed with extra padding to help prevent injury. Anti-microbial properties help prevent bacterial and fungal growth. Fits shoe sizes 6-10. Polyester/cotton/rubber/spandex. Machine wash and dry.
10.99 each pair
limited quantities

non-binding socks

Suitable for diabetics. Provides a comfortable fit and helps promote circulation.

CUSHIONED, NON-BINDING MESH LEG

NEW

❖ **Non-Binding Comfort Socks**
Cushioned footbed with extra padding to help prevent injury. Anti-microbial properties help prevent bacterial and fungal growth. Fits shoe sizes 6-10. Polyester/cotton/rubber/spandex. Machine wash and dry. **225-262-4**
9.99 a pair
limited quantities

SMOOTH TOE HELPS PREVENT RUBBING AND BLISTERS

MOISTURE-WICKING FABRIC KEEPS FEET DRY TO HELP PREVENT SKIN INFECTION

shape

BY STUDIO 1886



Available
in black
and beige

❖ Racerback Comfort Support Bra

Sleek, smooth and invisible under clothes. Adjustable straps. Wire-free cups with removable pads. Nylon/spandex. Hand wash, line dry.

Black

XS (0-2) **224-710-2**
S (4-6) **224-710-3**
M (8-10) **224-710-4**
L (12-14) **224-710-5**
XL (16) **224-710-6**

31.99

1X (18W-20W) **224-711-2**
2X (22W-24W) **224-711-3**
3X (26W-28W) **224-711-4**
36.99

Beige

XS (0-2) **224-710-7**
S (4-6) **224-710-8**
M (8-10) **224-710-9**
L (12-14) **224-711-0**
XL (16) **224-711-1**

31.99

1X (18W-20W) **224-711-5**
2X (22W-24W) **224-711-6**
3X (26W-28W) **224-711-7**
36.99



A

A. ❖ Shaping Tank

Seamless shaping scoop-neck tank. Nylon/spandex. Centre back length: 61 cm on medium; 65 cm on 1X. Hand wash, line dry.

Black

XS (0-2) **223-878-1**
S (4-6) **223-878-2**
M (8-10) **223-878-3**
L (12-14) **223-878-4**
XL (16) **223-878-5**

24.99

1X (18W-20W) **223-879-1**
2X (22W-24W) **223-879-2**
3X (26W-28W) **223-879-3**
29.99

Beige

XS (0-2) **223-878-6**
S (4-6) **223-878-7**
M (8-10) **223-878-8**
L (12-14) **223-878-9**
XL (16) **223-879-0**

24.99

1X (18W-20W) **223-879-4**
2X (22W-24W) **223-879-5**
3X (26W-28W) **223-879-6**
29.99

Stretchy
fabric with
built-in
tummy
control

Available in
black and beige

D



B

XS (0-2) **223-883-4**
S (4-6) **223-883-5**
M (8-10) **223-883-6**
L (12-14) **223-883-7**
XL (16) **223-883-8**

34.99

1X (18W-20W) **223-884-0**
2X (22W-24W) **223-884-1**
3X (26W-28W) **223-884-2**
39.99

Bra not included.



C

Black

XS (0-2) **223-881-3**
S (4-6) **223-881-4**
M (8-10) **223-881-5**
L (12-14) **223-881-6**
XL (16) **223-881-7**

24.99

1X (18W-20W) **223-882-3**
2X (22W-24W) **223-882-4**
3X (26W-28W) **223-882-5**
29.99

Bra not included.

Available in
black and beige

B. ❖ Shaping Open-Bust Bodysuit

Beige seamless shaping bodysuit. Open bust to wear your own bra. Allover smoothing for tummy, waist, back, hips and thighs. Prevents chafing. Nylon/spandex. Hand wash, line dry.



D

Black

XS (0-2) **223-879-7**
S (4-6) **223-879-8**
M (8-10) **223-879-9**
L (12-14) **223-880-0**
XL (16) **223-880-1**

31.99

1X (18W-20W) **223-880-7**
2X (22W-24W) **223-880-8**
3X (26W-28W) **223-880-9**
36.99

Available in
black and beige

C. ❖ Shaping High Waist Brief

Seamless shaping brief contours waist. Extra firm panel for tummy control. Nylon/spandex. Hand wash, line dry.

Beige

XS (0-2) **223-881-8**
S (4-6) **223-881-9**
M (8-10) **223-882-0**
L (12-14) **223-882-1**
XL (16) **223-882-2**

24.99

1X (18W-20W) **223-882-6**
2X (22W-24W) **223-882-7**
3X (26W-28W) **223-882-8**
29.99

D. ❖ High Waist Thigh Shaper

Seamless thigh-shaping shorts. Double-layer panel for tummy control. Prevents chafing. Nylon/spandex. Inseam 39 cm on medium; 43 cm on 1X. Hand wash, line dry.

Beige

XS (0-2) **223-880-2**
S (4-6) **223-880-3**
M (8-10) **223-880-4**
L (12-14) **223-880-5**
XL (16) **223-880-6**

31.99

1X (18W-20W) **223-881-0**
2X (22W-24W) **223-881-1**
3X (26W-28W) **223-881-2**
36.99

❖ **Conditioner for Dogs**

Rinse-off conditioner leaves coat soft and shiny. Soothes, hydrates and helps to alleviate itchiness. With aloe vera, vitamin E and oatmeal extract. Free from sulfates, colourants and silicones. Cruelty-free. Use with Sirius Groom Shampoo for a complete coat care regimen. 480 ml

Lovely Berry 224-716-5

Baby Powder 224-716-6

16.99 each

❖ **Shampoo for Dogs**

Helps alleviate itchiness and dryness by washing away allergens. Formulated with oatmeal to help soothe skin. pH-balanced formula. Long-lasting scents. Nature-derived ingredients. 480 ml

Lovely Berry 223-087-2

Baby Powder 223-087-3

16.99 each



❖ **Odor Eliminator**

Removes the toughest pet odours from fabrics and carpets. Leaves a light and fresh baby powder scent. Nature-derived ingredients including rice and barley to neutralize and absorb odours. For fabric and carpet use only; do not spray on pets. 400 ml
223-087-4
13.99



PUPPY LOVE

Grooming mist... no rinsing necessary!

Gentle and effective for all breeds

NEW

❖ **Sirius Groom Pet Grooming Mist**

Softens, soothes and hydrates your pet's skin and coat for instant freshness. Perfect for in-between washes. Moisturizing formula with centella asiatica, rosemary, oatmeal and Pro-Vitamin B5. 150 ml
224-716-9
13.99

Long-lasting baby powder scent



SPRAY, WIPE AND RINSE!

Clean dishes and appliances without scrubbing.

❖ **Spray-On Dish Soap**
99% biodegradable, eco-friendly plant-based formula cuts grease on contact. Dermatologically-tested and safe for skin. 500 ml
Red Apple 224-716-7
Fresh Citrus 224-716-8
reg. 12.00
9.99 each



❖ **Multi-Purpose Wipes**
Free of bleach and chemical preservatives. Naturally derived formula with citric acid and pomegranate vinegar. Dermatologically-tested. Pomegranate scent. Resealable package. 60 wipes. **223-134-2**
10.00 pack of 60 wipes

pack of 60 wipes



❖ **Automatic Dishwasher Detergent**
All-in-one detergent and rinse aid cleans and prevents water stains. Water-soluble formula dissolves easily in wash cycle. Nature-derived ingredients. Phosphate/toxin-free. Fresh citrus scent. 55 tablets. **222-709-1**
20.00
pack of 55 tablets

pack of 55 tablets



DISH SOAP REFILLS

❖ **Dish Soap Refill**
Naturally derived formula with stain-removing citric acid and micro bubbles. 970 ml
Lemon & Verbena 223-207-1
Garden Basil 223-207-0
Red Apple 225-019-6
14.00 each



❖ **Glass Dish Soap Bottle**
Refillable dispenser is screen printed with Cucina Essentials design. Includes pump. Comes empty. 22 cm H x 8 cm diam. Glass/metal. **223-153-1**
14.00



❖ **Dish Soap**
Naturally derived formula with stain-removing citric acid and micro bubbles. 490 ml
Lemon & Verbena 222-445-2
Garden Basil 222-445-1
Red Apple 223-206-8
10.50 each



No need to dilute or rinse.

❖ **Floor Cleaner**
Nozzle provides targeted application to apply directly to floor. Dries quickly for a streak-free shine. No need to dilute or rinse. Great for laminate, sealed hardwood and sealed stone. 750 ml
224-690-1
11.99

Fresh lavender scent



A. ❖ Eraser Sponge 3-Pack
Just add water to erase tough grease, soap scum and permanent marks. Textured side for tougher marks. Melamine. Each, 11 x 8 cm **224-849-3**
5.99 the pack of 3

B. ❖ Non-Scratch Scrub Sponge 3-Pack
Dual-sided. Non-scratch scrubber scours stains, dirt and grime fast and safely, even on non-stick surfaces. S-shape design. Cellulose. Each, 11 x 8 cm **224-690-2**
8.99 the pack of 3



Wipes can be used with our Mop Stick.

❖ **Heavy Duty Cleaning Wipes**
Textured pattern to cut through the toughest messes including oil. No rinsing needed. 50 wipes, 24 x 28 cm. **223-327-0**
12.99 pack of 50



Fresh lemon scent

❖ **Mop Stick**
Easy-grip handle. Full length, 1 metre. Head, 25 cm L x 10 cm W. Plastic/EVA/aluminum. **222-440-5**
21.99

360° swivel head with cloth grippers



❖ **Dish Soap Ultra Degreaser**
Keep your dishes clean with this fresh liquid soap. 980 ml **224-105-5**
8.99

Vegan and cruelty-free certified



SAFELY REMOVE TOUGH STAINS

50 unscented cleaning wipes

Scratch-free cleaning for delicate surfaces



❖ **Cook Top & Stainless Steel Cleaning Wipes**
Plant-based surfactants for safer yet powerful cleaning to lift and remove leftover residue and spills from glass cooktops and stainless steel. Unscented. 50 wipes, each 27 x 24 cm **224-716-4**
11.99

❖ **Rangehood & Kitchen Degreaser**
Double-solvent solution blend for hard-to-remove grease stains on range hoods, stovetops, BBQ grills and more! External oven use only. 480 ml **223-134-1**
15.99

❖ **Cook Top Cleaner & Polish**
Cleans, polishes and protects smooth cooktop ranges for a scratch-free shine. Plant-based formula cuts through the toughest grease and grime. Fresh green herbal scent. 230 ml **224-716-3**
13.99

FOOTWEAR REFRESH

Quick-drying and lasting fresh scent for all shoe types!

❖ **Shoe Deodorizer**

Eliminates tough odours on contact with the power of baking soda and persimmon. Great for all kinds of shoes, from leather to cotton.

300 ml **222-442-7**
11.99



❖ **Fabric Refresher with Wrinkle Release**

Freshens fabrics and smooths wrinkles. Prevents static electricity. With corn derived dextrin for wrinkle control, green tea and persimmon leaf extracts for odour control. Clean laundry scent. 500 ml

Fresh **222-445-0**
12.99



❖ **Sheet Detergent**

100% water soluble. With baking soda and natural fragrance oils. Works in all washers. For machine wash fabrics only. Sheets can be cut depending on your laundry load. 30 fast-dissolving sheets, each 23 x 20 cm

Lavender
223-206-7
Fresh
222-440-7
20.99 each

Up to 60 loads*



❖ **Laundry Stain Remover Spray**

For direct application without damaging fabrics. Pre-treats and removes tough set-in stains with a powerful enzyme formula. 500 ml

222-485-0
13.99



❖ **4X Super Concentrated Liquid Laundry Detergent**

Seven stain-removing enzyme-blend and 4X concentrated cleaning power in every drop for whiter and brighter clothes. Prevents future stains with continued use. Works in all washers. For machine wash fabrics only. Contains no phosphates or optical brighteners. Dermatologically-tested. 1 litre

222-941-2
20.99

*Based on regular loads for standard machine.



Cleaning power for 63 loads!*

HYGIENIC POWER

Look, smell, be clean...live hygienic.

Up to 50 loads*

Deep cleaning formulas are tough on stains and odours, yet gentle on skin.

❖ **Laundry Bar & Stain Remover**
With baking soda to help prevent odours for a deeper clean. Perfect for pretreating or targeted spot treating, hand washing, and travel. Safe for skin with moisturizing ingredients. 180 g
224-105-7
3.49

❖ **Fabric Softener**
3X concentrated. Softens, freshens, and protects clothes. Long-lasting rosewater and jasmine scent. Made with plant-based surfactants. Microplastic-free. Safe for skin and the environment. 50 loads. 1 litre
224-105-9
8.99

Breaks down stains pre-wash



*Based on regular loads for standard machine.

HOME & CAR ESSENTIALS

Reliable power for the devices you use everyday.

❖ Cell Strong Batteries

Non-rechargeable alkaline batteries with long-lasting power.

AA **225-019-9**

AAA **225-020-0**

17.99 each pack of 20 batteries



Holds all phones cases from 5 - 9 cm W

Universal mounting on dash or window.

❖ Car Cell Phone Holder

Easy lock/release for quick mount/removal. Reusable suction cup for a powerful hold. 360° rotation for landscape or portrait viewing. 15 cm H x 6 cm W x 11 cm D. Extends to 22 cm H. Plastic.

224-703-0

18.99

Last time in brochure. While supplies last.



Contents not included.

9-pocket organizer protects seats from scratches, spills and more!

❖ Backseat Car Organizer*

Quick-release, adjustable top and bottom straps. Water-resistant fabric. Pocket with clear touch-screen viewer window fits tablets up to 25 cm.

41 cm L x 61 cm H. Polyester.

224-705-4

27.99

Last time in brochure. While supplies last.



9-Pocket organizer

HOME & CAR ESSENTIALS

ROAD TRIP READY

Don't leave home without these convenient car essentials!

IMPROVE YOUR POSTURE

Easy-to-use device gently reminds you to adjust your back and shoulders when needed to **improve your overall posture.**



Uses gentle vibration to prompt you to straighten your posture



Comfortable, ergonomic design with adjustable straps for a perfect fit

NEW

❖ **Posture Corrector**

Vibrates when your back slouches more than 25 degrees, reminding you to straighten up. One size fits most. On/off button. 17 x 4 x 1 cm. ABS/polycarbonate/nylon. **225-127-1**

29.99

limited quantities

AVON PURE

MADE IN CANADA

WELLNESS

EPSOM SALT with essential oil

Bath soaks formulated with **Epsom salt (magnesium sulfate)** known for its health benefits readily absorbed through the skin, combined with the purifying properties of **essential oil**, provide soothing comfort.



Relax & De-Stress with Lavender

Soak away the stress of the day and prepare for a restful sleep. **225-504-7**

Purify & Revitalize with Eucalyptus

Soak away tension, congestion and fatigue. **225-504-8**

NEW

❖ **Avon Pure Epsom Salt Soothing Bath Soak**

Soak sore muscles and stress away with our soothing blend of Epsom salt formulated with moisturizing vitamin E and pure grapeseed oil. 750 g

15.00 each

limited quantities

BOOST YOUR WELLNESS

with the rich properties of botanical essence.

❖ Essential Oils

Add a few drops to a diffuser to experience the benefits.

- Paraben/gluten/phthalate/sulfate-free
 - Vegan
- 10 ml

NEW

Cinnamon

Uplifting scent of warm, spicy cinnamon. **225-675-1**
24.00



Zen

Create a sense of tranquility with lavender, peppermint and chamomile. **223-203-1**
27.00



Sweet Dreams

Create a serene environment with lavender and chamomile. **223-203-6**
27.00



Rosemary

Energize your space with rosemary. **223-206-5**
24.00



Peppermint

Stimulate and refresh your space with peppermint. **223-203-0**
23.00



Eucalyptus

Refresh the mind with eucalyptus. **223-204-1**
20.00



Happiness

Infuse the air with joy. Blend of grapefruit, lemon and sweet orange. **223-203-2**
19.00



Tea Tree

Refresh and purify your surroundings with tea tree. **224-919-6**
24.00



Lavender

Calms and soothes with lavender. **223-202-9**
24.00



ZEST UP YOUR DAY

Citrus essential oils...
your new zest friend!

Made with citrus oils



Helps boost alertness and concentration

Fresh and uplifting

❖ Avon Pure Pack Includes:

• Natural Deodorant Citrus Zest

Non-whitening formula is tough on odours while being gentle on skin. 50 g

• Roll-On Essential Oils Focus

With sweet almond oil, lemon peel oil and rosemary leaf extract. 10 ml

• Essential Oils Grapefruit

10 ml

896-437-5
3-PIECE PACK
39.99
57.00 value

REFRESHING + RADIANT

Fresh Bergamot & Wild Mint

Seize the day with a fresh bouquet of dewy flowers mixed with spicy bergamot, clean wild mint and luminous solar musk.

Shower Gel

Moisturizing cleanser derived from coconut. 295 ml

221-935-4
reg. 24.00
19.99

Body Mist

With aloe vera extract, refreshes and leaves skin feeling soothed.

236 ml 221-935-2
reg. 25.50
20.99

Body Lotion

Smooths and softens with moisture-rich shea butter and vitamin E. 236 ml 221-935-3

reg. 24.00
19.99

Hand Soap

With moisturizing glycerin, leaves hands feeling clean and soft. 300 ml 222-938-3

reg. 20.00
13.99

Free from parabens, mineral oil, silicone, phthalates and dyes



Gently cleanses without drying.



Hand Cream

With shea butter and antioxidants, Dermatologist-tested. Hypoallergenic. 75 ml

9.00 value

FREE
WITH EVERY 2
PURCHASES FROM
PAGES 178-185

In case of unforeseen demand, Avon reserves the right to substitute the free product with one of equal or greater value.

WARM & SULTRY

Hand Cream

Dermatologist-tested.
Hypoallergenic. **222-938-7**
reg. 9.00
6.99

Body Mist

With aloe vera extract.
Refreshes and leaves skin
feeling soothed. 236 ml
221-935-8
reg. 25.50
20.99

Shower Gel

Moisturizing cleanser
derived from coconut.
295 ml **221-936-0**
reg. 24.00
19.99

Body Lotion

Smooths and softens with
moisture-rich shea butter
and vitamin E. 236 ml
221-935-9
reg. 24.00
19.99

Hand Soap

With moisturizing glycerin,
leaves hands feeling clean
and soft. 300 ml
222-938-4
reg. 20.00
13.99



FREE
HAND CREAM
details page 179

Cozy Vanilla & Coconut

Envelop yourself
in a cozy cloud of
comforting vanilla,
creamy coconut and
calming chamomile.



ENERGIZING & PLAYFUL

Hand Cream
 Dermatologist-tested.
 Hypoallergenic. **222-938-5**
 reg. 9.00
6.99

Body Mist
 With aloe vera extract.
 Refreshes and leaves skin
 feeling soothed. 236 ml
221-935-5
 reg. 25.50
20.99

Shower Gel
 Moisturizing cleanser derived
 from coconut. 295 ml
221-935-7
 reg. 24.00
19.99

Body Lotion
 Smooths and softens with
 moisture-rich shea butter
 and vitamin E. 236 ml
221-935-6
 reg. 24.00
19.99

Hand Soap
 With moisturizing glycerin,
 leaves hands feeling clean
 and soft. 300 ml
222-938-2
 reg. 20.00
13.99

**Sparkling Grapefruit
 & Orange Blossom**
 Energize your hands and
 body with a juicy mix of
 zesty grapefruit, bright
 orange blossom, delicate
 honeysuckle and luscious
 peach.



FREE
HAND CREAM
 details page 179



Antibacterial Hand Gel Fresh Cucumber & Melon
 Germs don't stand a chance! Mild and gentle to skin. No water needed. 75 ml
222-568-1
 reg. 10.00
5.99

Hand Soap
 Leaves hands soft, cleansed and lightly scented. 240 ml
 Silky Vanilla **113-538-7**
 Fresh Cucumber & Melon **113-538-8**
 reg. 14.00
8.39 each



Fresh & clean go hand in hand!

Bubble Bath Lavender Garden
 Up to 24 pampering baths in every bottle. Dermatologically-tested. 700 ml **109-282-3**
 reg. 16.00
9.99

Soft and serene



SHOWER POWER

Hydrating Shower Gel
 Rich, creamy lather conditions skin with moisture. 150 ml
 Juicy Pomegranate & Mango **108-471-4**
 Blushing Cherry Blossom **108-425-2**
 Fresh Cucumber & Melon **108-427-5**
 reg. 9.00
5.99 each

FREE
HAND CREAM
 details page 179



NEW

❖ **Pumpkin Spice Latte Fragrance for Decorative Diffuser Set**

To be used with Fruits & Passion Reed Diffuser Set (coming soon in C21). Infuse reeds to keep your space scented with minimal effort. 125 ml
225-523-3
15.50

❖ **Pumpkin Spice Latte Ambiance Room Spray**

Spray into the air around your home. 125 ml **225-523-2**
20.00



NEW

Hand Soap

Biodegradable formula enriched with plant-based glycerin and vitamins E and B5. Recyclable bottle. 250 ml

Pumpkin Spice Latte 225-522-9
Applewood 224-556-5
12.00 each or...



HAND SOAP
ANY 2 FOR
18.00

To get the 2 FOR price, please order in multiples of 2.

GOURMET SCENTED CANDLE

Up to 35 hours of burn time burn!

WARM APPLEWOOD

Gourmet notes, including McIntosh apple, green almond and Anjou pear enhanced with the sweet woody scents of sandalwood and applewood.



NEW

❖ **Aura Fruits & Passion Warm Applewood Perfumed Candle**
 1-wick candle. Wax/glass. Comes with a decorative bamboo lid. 11 cm diam. x 8 cm H. 220 g
224-556-6
18.50 each or...

Never leave burning candles unattended. Keep out of reach of children and pets.

GET 2 FOR
35.00

PAGE 187

To get the 2 FOR price, please order in multiples of 2.

ALO FRUITS & PASSION delight your senses

Hand Cream

50 ml
 Ocean Flower **222-382-8**
 Grapefruit Guava **222-564-7**
 Orange Cantaloup **222-816-3**
 Pear Peony **222-383-3**
 reg. 5.50
3.99 each

Delicately scented
hand cream



❖ **Perfumed Candle***

1-wick candle. Handmade with plant-based wax. Glass/wax.
 Orange Cantaloup **222-685-5**
 Grapefruit Guava **222-381-4**
 Ocean Flower **222-382-7**
 reg. 18.50
13.49

35 hours of burn time



*Never leave a burning candle unattended. Keep out of reach of children and pets.

PAMPERING ESSENTIALS



WE'VE GOT
YOUR BACK!

Extra long handle allows you to easily reach down your back.

Avon Shower Brush
 Features massage points on the back of the brush to help relax your muscles. Includes hanging cord. Man-made materials. 36 cm L x 7 cm W.
224-951-5
14.00
 limited quantities



Features massage points on back of brush

1 litre Foaming Bath



Bonus Size Milky Foaming Bath Refill
 Enriched with vitamins E and B5. 1 litre
 Orange Cantaloup **222-718-9**
 Ocean Flower **222-719-4**
 Pear Peony **222-389-5**
 Grapefruit Guava **223-299-6**
 reg. 29.00
21.99 each



Lather and detoxify with this charcoal-infused bath pouf

Charcoal Bath Pouf
 12 cm diam. Polyethylene/polyester/charcoal powder.
223-981-5
4.99
 limited quantities



Double side back scubber.

Exfoliating Back Scrubber
 Double-sided back scrubber; one side features textured sponge surface other side features soft smooth surface. Polyester/rayon/polyurethane. Machine wash, hang to dry. 60 x 10 cm
223-229-9
9.99
 limited quantities



HAND-LOVING SOFTNESS

Inspired by Italian tradition, Cucina is formulated with the **highest-quality natural ingredients**.

Cucina Fruits & Passion Hand Soap 1 Litre Refill
1 litre

Coriander and Olive Tree
A delicate blend of coriander seeds and olive wood.
223-207-4

Sanguinelli Orange and Fennel
Delectable sanguinelli orange with fresh, green fennel.
222-745-2

Sea Salt and Amalfi Lemon
Sparkling notes of Amalfi lemon and soft sea salt.
223-207-5

Lime Zest and Cypress
Enticing lime zest meets warm cypress. **222-744-6**

reg. 38.00
28.50 each or...



1 litre Refill



CHOOSE ANY 2 FOR 55.00
PAGES 190

To get the 2 FOR price, please order in multiples of 2.

NOURISHING & FRESH

Coriander and Olive Tree a delicate blend of coriander seeds and olive wood.



MINICOFFRET DÉCOUVERTE / MINI DISCOVERY SET
coriandre et olivier / coriander and olive tree

LIMITED EDITION

Cucina Mini Discovery Set

Includes:

- Hand Soap with Olive Oil 60 ml
- Antibacterial Hand Gel 60 ml
- Fragrant Kitchen Mist 60 ml
- Regenerating Hand Cream 50 ml

224-919-9

reg. 18.00

SPECIAL 14.50 the set



VÉILMENT

Leaves skin feeling soft and nourished.

Hemp Seed Oil Ultra-Nourishing Bathing Bar

Gently cleanses without stripping skin's moisture.

90 g

222-338-7
reg. 7.00
6.00



Creamy coconut scent.

Care Moisturizing Bar Soap

Plant-based cleanser, derived from olive oil and infused with coconut oil, moisturizes as it gently cleanses, leaving skin beautifully soft and delicately fragranced.

80 g

222-694-9
reg. 3.50
2.79



Deeply nourish and hydrates.

Hemp Seed Oil Ultra-Nourishing Dry Body Oil

Helps deeply nourish and hydrate dry skin to keep it looking healthy.

150 ml
222-338-6
reg. 49.00
40.00



A gel cleansing foam infused with macadamia nut oil.

Macadamia Oil Revitalizing Foaming Shower Gel

Deeply nourishes and conditions skin so it feels soft and pampered.

190 g
221-483-6
reg. 34.00
27.00



Creamy yet light.

Hemp Seed Oil Ultra-Nourishing Shower Shake

Leaves skin feeling sumptuously soft and smooth. Shake before use.

300 ml
222-338-5
reg. 33.00
25.00



Deeply nourishes skin with pampering macadamia nut oil.

Macadamia Oil Revitalizing Body Mousse

A soft, foamy mousse, so lightweight, it quickly melts into the skin for long-lasting moisturization.

190 g
221-483-5
reg. 34.00
27.00



VÉILMENT

Israeli dead sea salt.

Dead Sea Salt Body Scrub & Cleanser

400 ml

221-902-8
reg. 21.00
18.00



Charcoal, Israeli Dead Sea salt, apricot seed and spruce.

Bamboo Charcoal Body Scrub & Cleanser

400 ml

222-443-6
reg. 33.00
25.00



Mineral-rich himalayan pink salt.

Himalaya Pink Salt Body Scrub & Cleanser

400 ml

221-903-4
reg. 21.00
18.00



French rose oil and apricot seed powder.

Black Rose Body Scrub & Cleanser

400 ml

221-902-1
reg. 21.00
18.00



Enriched with comforting lavender oil extract to help calm and soothe.

Véilment Care Essential Lavender Bar Soap

Free from parabens and phthalates. Each, 140 g

223-953-7
reg. 12.00
9.00
the pack

Pack of 3



Calming sage scent.

Himalaya Pink Salt Exfoliating Soap

Cleansing bar, with mineral-rich Himalayan pink salt, walnut shell, apricot seed and cranberry powder.

150 g
222-462-0
reg. 12.00
8.50



SPA ESSENTIALS

Roll in a back-and-forth motion, applying more pressure for a deeper, more invigorating massage

Rollerball Massager

6 x 6 x 5.5 cm. Polypropylene/resin.

For adult use only. **222-620-1**

12.99

limited quantities

Place in freezer to help soothe inflammation



Fits easily in your hand

A quick and easy way to relax any time - just let the flexible, smooth-tipped wires massage your scalp.

Head Massager

9 cm W x 24 cm H.

Aluminium/stainless steel/resin/iron.

223-229-2

6.50

limited quantities



Give yourself a head massage

Into facials, masks and other beauty treatments?

Keep your hair in check with our plush spa headband.

Grey Headband

Hand/machine wash,

hang dry. Polyester/cotton.

224-701-0

5.00

limited quantities



Vented Circle Brush

Specially designed vent ports work to channel airflow when used with a blow dryer.

ABS/nylon.

23 x 10 x 3 cm

223-973-6

10.99

limited quantities



Anti-slip handle

Flexible anti-snag bristles

Great for upper lip, cheeks, hairline



Set of 3 razors

Includes cap

ELIMINATES peach fuzz in seconds!

Exfoliates gently, allowing for better absorption of skin care products and a more flawless makeup application.

Ombre Facial Hair Removal Wands

Provides precise and safer hair grooming. Glide the razor downward at a 45 degree angle. Rinse razor and dry before placing safety cap on. 15 cm L. Plastic/stainless steel. **222-532-7**

7.99 set of 3
limited quantities



SKIN SO SOFT NUTRIENT-RICH COCONUT OIL



Rich and creamy
yet light and airy



Softens with
coconut oil
and vitamin E



With skin-
softening
coconut milk



Body Soufflé
Airy, coconut water-infused soufflé leaves skin feeling soft all day.
200 ml
221-206-6
reg. 24.00
14.99

Oil Wash
Softens with coconut oil and vitamin E.
350 ml
221-206-3
reg. 24.00
14.99

Milk Lotion
With skin-softening coconut milk.
350 ml
221-206-4
reg. 24.00
14.99

Lip Balm
With aloe extract and shea butter.
4.1 g
222-944-3
reg. 3.00
1.99



Tropical coconut
flavour



SKIN SO SOFT

ORIGINAL

with jojoba oil
and a fresh
herbal scent.

Bath Oil

Locks in hydration
during a bath or
shower and leaves
skin feeling soft.
500 ml
107-681-3
reg. 34.00
21.99



Lip Balm

With jojoba
oil, shea
butter and
aloe extract.
Grape
flavour. 4.1 g
222-944-2
reg. 3.00
1.99



Shower Gel

Gently
cleanses
and hydrates.
150 ml
107-681-0
reg. 12.00
5.99



Beauty Bar Soap

Skin-nourishing
bar soap cleanses
and softens skin.
Suitable for
daily use
on face,
body and
hands.
90 g
224-348-1
reg. 6.50
4.99



SKIN SO SOFT

Shower Gel

Gently
cleanses
and
hydrates.
150 ml
107-743-5
reg. 12.00
5.99



Beauty Bar Soap

Skin-nourishing
bar soap cleanses
and softens skin.
Suitable for
daily use
on face,
body and
hands.
90 g
224-348-2
reg. 6.50
4.99



Bath Oil

Locks in
hydration
after a bath
or shower.
500 ml
107-743-7
reg. 34.00
21.99



SOFT & SENSUAL

with argan oil and
a spicy floral scent.

the well-stocked MEDICINE CABINET



Itch relief

Anti-Itch Cream

For temporary relief of minor irritations due to eczema, psoriasis and insect bites. Suitable for sensitive skin. Medicinal ingredient: Hydrocortisone, 0.5%. 56.7 g
223-102-7
13.99 or...

For cuts, scrapes & burns

Poly Antibiotic Ointment

Helps prevent infection in minor cuts, scrapes and burns. Active ingredients: Bacitracin and Polymyxin B Sulfate. 28 g
223-103-0
19.99 or...

Deep & potent pain relief

Arthritis Pain Relief Cream

Temporarily relieves aches and pains of muscles and joints associated with arthritis. Odour-free. Medicinal ingredient: Capsaicin, 0.107%. 42.5 g
223-102-6
19.99 or...

Back & joint pain

Pain Relief Cream for Muscles, Back and Joints

Temporary relief of aches and pains of muscles and joints associated with backaches, lumbagos, strains and sprains. Medicinal ingredients: Methyl Salicylate, 30%, Menthol, 10%, Camphor, 4%. 56.7 g
223-101-1
13.99 or...

CHOOSE ANY 2 FOR 22.00 PAGES 200-201

ORGANIC COTTON

helps you stay dry and protected, and keeps you feeling your best.



SOFY® 100% Organic Cotton Cover Pads and Panty Liners

- 100% organic cotton
- Free of dye, fragrance and chlorine... so won't irritate your intimate areas
- Thin, flexible material
- Unique design for instant absorption and prevention of side leakage
- Full coverage from light to heavy flow
- Secure adhesion

Regular Panty Liners

Pack of 40, 15 cm L.
223-211-7
reg. 17.49
13.99 the pack or...

Regular Pads

Pack of 20, 25 cm L.
223-208-3
reg. 17.49
13.99 the pack or...

Overnight Pads

Pack of 10, 33 cm L.
223-211-6
reg. 13.99
11.49 the pack or...

**CHOOSE
ANY 2 FOR
22.00
MIX OR MATCH
PAGES 200-201**

To get the 2 FOR price, please order in multiples of 2

LISTERINE® your oral care is in good hands

Designed for wider-set teeth



Cool Mint™ Extra-Wide Waxed Floss
A hint of mint flavour every time you floss. Polypropylene multi-filament/wax. 41.1 metres
225-013-2
3.49



Waxed Floss
For a cleaner, fresh breath feeling. Polypropylene multi-filament/wax. 50.3 metres

A. Cool Mint™
A hint of mint every time you floss. **225-013-1**

B. Fresh Burst™
Leaves your mouth feeling fresh with a burst of mint. **225-012-6**
2.99 each



Total Care™ Dental Floss
Removes up to 2X more plaque than the leading easy-gliding floss. Fresh minty flavour. Polypropylene multi-filament. 27.4 metres
225-013-3
4.99



Listerine® Ultraclean™ Flosser Replacement Heads

Disposable heads to replace daily. To snap off: place handle on hard surface, put finger on neck of handle, press down gently to release. To snap on: with floss facing up, insert handle up through centre of head, align notches and push down to snap in place. 28 single-use refill heads. Polypropylene multi-filament/plastic.
225-013-6
6.99 set of 28

Waxed Floss
Polypropylene multi-filament/wax. 182.8 metres

Unflavoured
This unflavoured floss slides easily and cleans between teeth for a fresher mouth and healthier smile. **225-013-0**

Fresh Burst™
Leaves your mouth feeling fresh with a burst of mint. **225-012-7**
7.99 each



makes flossing **EVEN EASIER!**

Great for first-time floss users and people with limited manual dexterity.



TO USE:
Move floss up and down between each tooth. Clean below the gum line. Rinse floss as needed. Replace head daily.

Ultraclean™ Flosser + 8 Heads
Includes 1 flosser and 8 disposable snap-on heads that enable quick, hygienic changes. Polypropylene multi-filament/plastic.
225-013-4
6.99 9-piece set





Lip Balm 4 g
Véilment Hemp Seed Oil Ultra-Nourishing Lip Balm
 Red 222-938-0
 Clear 222-938-1
 reg. 3.50
2.49 each

fmg Flavor Savers
 Pomegranate 224-004-0
 Lemon 224-003-9

Avon Sun+ SPF 15
 224-362-7

Dew Kiss Lip Dew
 221-971-2

Véilment Care
 Cherry 222-937-8
 Strawberry 222-937-9
 Aloe (with aloe extract; grape flavoured) 223-132-2
 Coconut (with coconut oil) 223-132-1
 reg. 3.00
1.99 each

Skin So Soft Original
 222-944-2

Flavor Savers
 Vanilla 221-971-9
 Strawberry 221-971-7
 Melon 221-971-8

Moisture Therapy
 Intensive Healing & Repair 221-985-3
 Daily Defense 222-571-5
 Calming Relief 222-571-4
 reg. 3.00
1.99 each

Anti-stain formula.
Perfumed Liquid Deodorant
 Long-lasting odour protection. Aluminum-free, quick-drying formula. Easy fingertip application.
 59 ml
 298-088
 reg. 9.00
5.99



NOURISH & PROTECT HANDS

Nourishing hand butter, enriched with first cold-pressed olive oil to help maintain skin's elasticity, softness and hydration while leaving a non-greasy protective film.

Cucina Fruits & Passion Nourishing Hand Butter
 60 ml
 reg. 13.50
10.00 each



Sanguinelli Orange and Fennel
 223-300-0

Lime Zest and Cypress
 222-735-7

Sea Salt and Amalfi Lemon
 223-461-1

Coriander and Olive Tree
 222-742-2

PAMPERING FOOT ESSENTIALS

Stainless steel toenail clipper with chevron design.

Chevron Grip Toenail Clipper
8 cm L. Stainless steel.
224-070-1
6.99
limited quantities



Put on footwear without straining your back.

Steel Shoe Horn
Carbon steel.
42 cm L.
221-086-9
12.99
limited quantities



Foot Works Antifungal Spray for Athlete's Foot
Helps relieve itching and cracking. 100 ml
223-885-4
reg. 13.00
8.99



Foot Works Deodorizing Spray
Can also be used in footwear. 100 g
116-648-6
reg. 13.00
8.99



REFLEXOLOGY

is based on a centuries old healing art

Gently apply pressure by using small, circular motions to help relieve tension in targeted areas.



These socks are a printed map of your reflexology zones - the organs connected to the pressure points of your feet.

Reflexology Socks

Crew-length socks with reflexology diagram printed on soles. Fits shoe sizes 6-10. Machine wash, hang dry. Polyester/spandex. 222-242-2

9.99

limited quantities

STEP UP YOUR FOOT CARE

With vitamin E, jojoba oil, cocoa butter and shea butter.

Lavender Softening Balm
50 g
116-648-4
reg. 10.00
6.99



Pedicure kit... perfect for travel!

Pedicure Kit
Metal/man-made materials.
Case, 9 x 12 cm 441-304
reg. 16.00
10.99 the kit



Do-it-yourself pedicure essential with four features in one tool!

Pedicure Tool
Tool features: fine grain file, metal file, brush and pumice stone. Plastic.
8 x 4 x 4 cm 102-612-1
reg. 16.00
10.99



CURVED FOOT FILE

Stainless steel micro-file effortlessly removes tough calluses.



Unique curve and wide surface makes this tool easy to use

Long ergonomic handle

IT'S BACK!

Callus Remover
ABS/rubber/stainless steel. 27 x 7 cm
222-621-7
12.99
limited quantities

thin hair?

These formulas were created to help
hair feel thicker and fuller.

**DR. GROOT'S
PREBIOTICS &
PARA-PROBIOTICS
HELP BALANCE
HEALTHY SCALP
AND HAIR FOR A
FULLER LOOK**



rosemary extract
helps rejuvenate
scalp and hair
**DR. GROOT
MICROBIOME
SCALP FORTIFYING
Serum Treatment**
200 ml **222-566-2**
reg. 49.00
41.00



biotin helps visibly
thicken hair shafts
**DR. GROOT
MICROBIOME
SCALP FORTIFYING
HAIR-THICKENING
Shampoo**
400 ml **222-566-0**
reg. 49.00
41.00



propolis and
honey help visibly
enhance volume
**ELASTINE
PROPOLITHERA
VOLUMIZING
Shampoo**
500 ml **222-244-8**
reg. 26.00
22.49



royal jelly
helps
retexturize
**ELASTINE
PROPOLITHERA
VOLUMIZING
Conditioner**
500 ml **222-244-9**
reg. 26.00
22.49



ceramide richly moisturizes
to visibly strengthen strands
biotin helps dry, damaged hair
feel thicker, fuller and healthier
**ELASTINE MOISTURE
ESSENTIALS VOLUME
Shampoo**
375 ml **224-075-9**
Conditioner
375 ml **224-076-0**
reg. 12.50
9.99 each

**RICHLy
MOISTURIZING
CERAMIDE +
BIOTIN
HELPS TO VISIBLY
STRENGTHEN
STRANDS**



**ECO-BOTANIC
ESSENCE™ IS
pH-BALANCED,
LIKE HEALTHY
HAIR**

rosemary helps promote
thicker hair and scalp health
sea salt adds body
**ELASTINE BOTANICALS
ROSEMARY & SEA SALT
VOLUMIZING
Shampoo**
200 ml **222-566-6**
Conditioner
200 ml **222-566-7**
reg. 8.00
6.29 each
**Free of parabens, mineral oil,
triclocarban and triclosan**

Nourish your scalp while you **clarify** and **detox** from build-up of impurities.

exfoliates
DR. GROOT MICROBIOME SCALP FORTIFYING Exfoliating Shampoo
 With rosemary extract
 250 ml **222-566-1**
 reg. 49.00
41.00

helps **stimulate** circulation
DR. GROOT PREMIUM SCALP Cleansing Brush
 Massages and helps cleanse. **223-965-9**
 reg. 26.00
21.00

nourishes
DR. GROOT MICROBIOME SCALP FORTIFYING Massaging Tonic
 With sophora root, helps support the health of scalp.
 150 ml
222-566-3
 reg. 66.00
55.00



PREBIOTICS & PARA-PROBIOTICS HELP RESTORE SCALP'S HEALTHY FLOR, WHILE PLANT-BASED INGREDIENTS HELP SOOTHE ITCHING

Style with a customized, easy-to-use tool. Enhance with mousse, cream or gel. Finish with spray.

boost **volume**

A. ELASTINE PROPOLITHERA VOLUMIZING Mousse
 Protects against heat, great for blow drying.
 142 g **222-551-4**
 reg. 27.00
21.00

B. ELASTINE PROPOLITHERA VOLUME Spray
 200 ml **222-551-3**
 reg. 27.00
21.00

create instant **curls**

C. ELASTINE PROPOLITHERA Curl Cream
 Rich hydration.
 150 ml **222-551-0**
 reg. 27.00
21.00

D. ❖ CHI® Volcanic Lava Ceramic Pro Spin 'n' Curl
 Get shiny and bouncy curls with this 2.5 cm (1") pro automatic rotating curling device.
222-338-1
 reg. 210.00
189.00

for any **style**

E. CHI® ENVIRO 54® Natural Hold Hair Spray
 Brushable hold. Paraben-free.
 284 g **222-539-3**
 reg. 38.00
31.00

G. ❖ CHI® Advanced Ionic Compact Hair Dryer
 1875-watt ion generator. Adjustable heat and air-speed settings. Removable filter. Includes air nozzle concentrator and diffuser. **222-337-9**
 reg. 175.00
159.00

F. CHI® Styling Cream Gel
 Create sleek styles or enhance natural curls. 177 ml
222-521-4
 reg. 29.00
24.00



colour concerns?

BROWNS

4 / Dark Brown 223-437-1



4B / Dark Chocolate Brown 223-437-2



5B / Medium Maple Brown 223-437-5



5CB / Medium Chestnut Brown 223-437-4



BLACKS

2 / Soft Black 223-436-8



BLONDES

7BL / Natural Dark Blonde 223-437-7



8BL / Medium Golden Blonde 223-437-8



10BL / Extra Light Natural Blonde 223-437-9



REDS & AUBURNS

4R / Dark Mahogany Red 223-437-3



6R / Light Auburn 223-437-6



Start with pre-color treatment. Follow with color in two steps. Finish with conditioning mask.

ELASTINE SALON DE COLOR

100% grey coverage with rich, long-lasting colour; With pro-keratin, collagen and ceramides. Free of ammonia, parabens, mineral oil and benzophenone for healthy-looking hair. Refresh, brighten or deepen colour. reg. 13.99
11.99 each kit

Find your **perfect hair shade**, cover roots in minutes, and refresh and revive between shampoos... with our complete line of colour and care.

ELASTINE RESTORE & DETOX DRY SHAMPOO

Cleanses and detoxifies between shampoos. With charcoal extract. No water needed! 142 g

Enigmatic Dark 222-550-8
Fearless Brunette 222-550-9
Incredible Invisible 222-550-7
reg. 27.00
22.49 each

ROOT TOUCH-UP

Covers grey and bare spots in seconds. Extends time between salon visits. 7 g reg. 26.00
22.00 each



These **rejuvenating formulas** help tame frizz, repair breakage, seal split ends and restore smooth, lustrous locks.



ELASTINE PROPOLITHERA REJUVENATING

- A. Hair Deep Conditioning Treatment Cap**
Single use cap.
Two caps included.
224-349-0
reg. 26.00
22.49 pack of 2
- B. Hair Oil Serum**
170 ml 222-245-4
reg. 26.00
22.49

- C. Damage Repair Shampoo**
500 ml 222-245-1
reg. 26.00
22.49

- D. Damage Repair Conditioner**
500 ml 222-245-2
reg. 26.00
22.49

- E. Hair Mask**
300 ml 222-245-3
reg. 26.00
22.49

WITH PROPOLIS TO REPLENISH BRITTLE HAIR
HONEY TO RESTORE MOISTURE
ROYAL JELLY TO REVIVE LUSTRE



before after

WITH REPLENISHING **KERATIN AND PLANT-BASED BONDING AGENTS**

NEW

CHI® ESSENTIALS REVIVE KERATIN + BONDING COLLECTION

Restoring Shampoo
Cleanses, moisturizes and protects against split ends and frizz. 355 ml 224-991-6
reg. 35.00
27.99

Restoring Conditioner
Helps restore dry, damaged and brittle hair. 355 ml 224-991-7
reg. 35.00
27.99

Protecting Serum
Apply to damp or dry hair for smoothness and shine as a finisher and UV protectant. 88 ml 224-991-8
reg. 59.00
48.99

Free of sulfate and paraben. PH balanced. Colour-safe.



extremely damaged hair?

With richly moisturizing **ceramide** to help **strands, protect** hair from wear and tear, and promote **elasticity** and **shine**.



VISIBLY
ENHANCES
SHINE

**ELASTINE
MOISTURE
ESSENTIALS SHINE**

Hair Oil Serum
75 ml **224-076-3**

Conditioner
375 ml
224-076-2

Shampoo
375 ml **224-076-1**
reg. 12.50
9.99 each



**ARGAN OIL-INFUSED
FORMULA, WITH VITAMINS
AND ANTIOXIDANTS,
HELPS MOISTURIZE AND
REDUCE BREAKAGE AND
SPLIT ENDS AND KEEP
LOCKS LOOKING SHINY
AND SMOOTH.**



BioSilk® Silk Therapy®

Leave-In Treatment

Weightless leave-in silk treatment replenishes and reconstructs to help repair and protect all hair types. Helps shield hair from UV rays, heat and humidity. 167 ml

222-387-5

reg. 48.00

39.00

Tames **frizz** and **flyaways**
and leaves hair **silky smooth**
with reflective **shine**.

dry, limp and dull hair?

WITH HEMP SEED OIL, RICH IN OMEGA 3-6-9 FATTY ACIDS, TO HELP MOISTURIZE DRY, DAMAGED HAIR AND PREVENT BREAKAGE



ELASTINE HEMPHARMX Shampoo
Weightless hydration. Vegan formula. Silicone-free. Sulfate-free. 400 ml
222-687-3
reg. 34.00
28.00



ELASTINE HEMPHARMX Conditioner
Silicone-free, vegan formula hydrates every strand for healthier-looking hair. 400 ml
222-687-4
reg. 34.00
28.00



CHI® ESSENTIALS REPLENISHING Shampoo
With panthenol to help strands retain moisture. Safe for dry colour-treated hair. 355 ml
222-707-3
reg. 26.00
22.50



CHI® ESSENTIALS MOISTURIZING Conditioner
With panthenol (vitamin B5) to help strengthen hair, smooth split ends and fight frizz. 355 ml
222-707-4
reg. 26.00
22.50



CHI® ESSENTIALS REPAIRING Serum
With rosemary to help repair split ends and enhance shine. 177 ml
222-707-5
reg. 44.00
37.00



CHI® ESSENTIALS THERMAL Protecting Spray
With silk molecules, helps protect hair from the damaging heat from styling tools. 177 ml
222-707-6
reg. 38.00
31.00

WITH NOURISHING ALOE VERA, POMEGRANATE AND HIBISCUS

ELASTINE BOTANICALS CHERRY BLOSSOM & HYALURONIC ACID MOISTURIZING Conditioner
With revitalizing babassu seed oil, helps bring damaged hair back to life, adding dewy moisture for a smooth, natural-looking sheen. 200 ml
222-566-5
reg. 8.00
6.29



ELASTINE BOTANICALS CHERRY BLOSSOM & HYALURONIC ACID MOISTURIZING Shampoo
With chamomile flower water and lemon chestnut extract for healthier-looking hair. 200 ml
222-566-4
reg. 8.00
6.29



MOISTURIZE DRY, DAMAGED HAIR WITH SUPER-HYDRATING HYALURONIC ACID

ELASTINE PROPOLITERA Leave-In Conditioner
Hydrates and nourishes dry hair, infusing it with rich lustre. 240 ml
222-551-1
reg. 27.00
21.00



REJUVENATING STYLING BOOSTERS COMBINE THE BEE GOODNESS OF HONEY WITH NOURISHING HYDROLYZED COLLAGEN



ELASTINE PROPOLITERA Aloe Dual-Active Hair Serum
With propolis, which contains vitamins, minerals and other nutrients. 100 ml total.
222-551-2
reg. 42.00
35.00



ELASTINE PROPOLITERA Serum Treatment
Adds life to your locks in seconds. Upon contact with water, nutrient-rich liquid visibly transforms into a creamy formula. Targets areas where needed most. 230 ml
222-627-0
reg. 31.00
26.00

dry, limp and dull hair?

NEW



2-1 shampoo & conditioner luxuriously scented



Love Me
Jasmine and
ylang-ylang.
224-812-2



Fresh Citrus
Lime, mandarin
and basil.
224-813-2



Pure Breeze
White rose and
Bulgarian rose.
224-812-3

PATENTED 2-IN-1 TECHNOLOGY HELPS HYDRATE HAIR FOR SMOOTHER STRANDS WHILE INFUSING HAIR WITH A LONG-LASTING, DELIGHTFUL FRAGRANCE

NEW

ELASTINE PERFUME 2-IN-1 SHAMPOO Turn your morning shower to a sense-awakening session. Moisturizes hair while controlling oil-derived odours. Free of sulfates and parabens. Suitable for daily use. 250 ml reg. 23.00 17.99 each

LIGHTWEIGHT HAIR SCISSORS

Trim split ends and bangs between salon appointments. 17 cm L. Stainless steel.

224-646-0

17.99

limited quantities



MARBLE DETANGLING BRUSH

ABS/thermoplastic polyester elastomer. 18 x 7 x 3 cm

223-251-1

8.99

limited quantities

**SOFT FABRIC
ALLOWS SKIN TO
BREATHE AND
HELPS PREVENT
SLEEP CREASES**



**FEATURES
FLAP TO SECURE
PILLOW**

GOOD HAIR DAY SATIN PILLOWCASE

White, soft satiny pillowcase. Fits a standard size pillow. Polyester. Machine wash, hang to dry. 51 x 66 cm

224-087-9

11.99

limited quantities

**NUMBER CODED
COMB GUIDES FOR A
PROFESSIONAL RESULT
SELF-SHARPENING
STAINLESS
STEEL BLADES**

Precision cutting and styling at home.

20-PIECE HAIRCUT KIT



ACCESSORIES:

- Ten comb guides
- Barber cape
- Two styling clips
- Lubricating oil
- Barber scissors
- Cleaning brush
- Barber comb
- Blade guard (not shown)

NEW

❖ Conair® for Men® NUMBER CUT® Number Coded Comb Guide Haircut Kit

Easy-to-use haircut kit will save you time and money with fewer trips to the barber. Plastic/metal.

225-791-6

29.99 the kit

limited quantities

**CORDED WITH A LONG-LASTING MAGNETIC MOTOR
INCLUDES DRAWSTRING POUCH**

NEW



STYLING BLOW OUT

Mid-size dryer

- Features two heat settings and two speeds for styling control
- Concentrator attachment to focus air
- Removable filter and convenient hang ring for easy storage

2 heat settings
2 speeds



Concentrator



NEW

❖ **Conair® 1875 Watt Hair Dryer**
 Powerful enough to dry hair fast, and compact enough to take on-the-go. This blow dryer combines performance with convenience. 1875 watts. 1.5 metre (5 ft) power cord. Electrical. **225-807-0**
39.99

limited quantities

Out-of-the way hanging ring

CONAIR®

NEW



Waffle weave is luxuriously soft and moisture-wicking

Luxe spa-like towel dries hair in no time!

WRAP & TWIST HAIR TOWEL

1

Wrap hair in towel and gently twist



2

Unique twist & loop system keeps towel in place



- Enhances the benefits of leave-in treatments
- Reduces blow-drying time
- Gentle on hair with less frizz and breakage

NEW

White Hair Towel
Tapered design fits most. Terylene/chinlon. Machine wash, hang to dry. 65 x 28 cm at widest point. **225-506-9**

12.99

limited quantities

Tapered design for a comfortable fit



ESCAPE TO A BLISSFUL RETREAT

Balance your mind and heighten your senses with soothing aromatherapy.

Infused with bergamot, jasmine and sandalwood, this uplifting scent will melt your worries away and surround you with Tranquil Moments.

TRANQUIL MOMENTS
Room Spray
100 ml
224-362-6
reg. 14.00
6.99

Bath & Shower Gel
150 ml
111-849
reg. 12.00
5.99

Relaxation Foam Bath
700 ml
232-501
reg. 20.00
10.99

Wooden Bath Brush
Wash with soap and water, hang to dry between each use. 35 cm L x 7 cm W. Boar hair bristles/lotus wood handle/polypropylene cord. **222-552-3**
10.99
limited quantities

LARGE
700 ml



BACK BY POPULAR DEMAND!

Long lotus wood handle helps to exfoliate your back and hard-to-reach areas



FRESH

all day
don't sweat it!



Non-whitening, quick drying and anti-staining anti-perspirants.

- Mesmerize **103-708-3**
- Wild Country **369-866**
- Black Suede **114-898-5**
- Haiku **107-042-4**
- Timeless **370-735**
- Imari **106-378-3**
- Sweet Honesty **370-736**
- Rare Gold **103-708-2**
- Night Magic **107-042-5**
- Odyssey **107-042-6**
- Far Away **107-042-7**
- Rare Pearls **103-708-1**
- On Duty Original **380-342**
- On Duty Sport **380-309**
- On Duty Unscented **380-343**
- Feelin' Fresh Original **380-345**
- Cool Confidence Original **380-344**
- Cool Confidence Baby Powder **380-346**
- Skin So Soft
- Soft & Sensual **119-964-4**
- Tranquil Moments **107-425-6**

Roll-On Anti-Perspirant Deodorant

24-hour wetness protection. 75 ml
5.00 each or...

**ONLY
99¢**
WITH EVERY 20.00
PURCHASE FROM THIS
BROCHURE
(excluding pages 232-233)



cozy relief fund

You know how good a cozy blanket feels after a long day...

Physiogel skin care brings that same feeling of comfort to sensitive skin, which is why we want to share some cozy relief with someone who needs it.

Avon will donate \$5

to the **Canadian Cancer Society's Cozy Bed and Blanket program** for every Physiogel product you purchase to provide comfortable beds and blankets to people receiving cancer treatment away from home as well as 500 Physiogel care packages.

Learn more about the Canadian Cancer Society and its programs at cancer.ca

IN SUPPORT OF



Canadian Cancer Society



BIOMIMIC TECHNOLOGY™

Works naturally helping to replenish and protect skin's moisture barrier so your skin feels less dry and sensitive.

Clinically proven moisturization.



Dry, sensitive skin? Try our SOOTHING CARE KIT

Physiogel Hypoallergenic Daily Moisture Therapy lightweight formulas are absorbed quickly and provide long-lasting moisture to help protect against dryness.

things to love

- Triple action: Repairs dry skin. Restores. Hydrates.
- Dermatologist-recommended worldwide
- Hypoallergenic • No colourants



NEW

Physiogel Hypoallergenic Daily Moisture Therapy Travel Kit

Three essentials for on-the-go. Comes in a convenient plastic bag. Includes:

- Dermo-Cleanser 50 ml
- Facial Lotion 50 ml
- Facial Cream 30 ml

224-349-1
reg. 43.00

SPECIAL 34.99

3-PIECE KIT

NEW

SHOWER UP in tropical scents



ALO Fruits & Passion Bonus Size Shower Gel

Enriched with vitamins E and B5 leaves skin feeling soft, smooth and delightfully scented. 950 ml

NEW Pear Peony 225-658-8

NEW Pink Coconut 225-537-2

Orange Cantaloupe 223-886-2

Grapefruit Guava 223-886-4

Ocean Flower

223-886-3

reg. 19.99

LIMITED TIME OFFER

17.99

 each

BUY NOW! BROCHURE IS VALID FOR A LIMITED TIME. SEE BELOW.

Campaign 20, 2022

The advertised prices featured in this brochure (errors and omissions excluded) are Avon's retail prices for this current campaign and are applicable to online or Representative channel purchases only. [Your] Representative[s] set[s] their own selling price depending on the channel of purchase. All prices exclude applicable taxes. All prices and promotions (excluding delivery) featured in this brochure are valid for orders placed during this campaign only.



See our commitment at:
avongivesback.ca



Member of The Canadian
Direct Sellers Association

100% SATISFACTION GUARANTEED

If you are not happy with any purchase, return the product through the same channel of purchase.

If you purchased online, return the product to Avon within 30 calendar days from the date stated on your receipt for your money back.

If you purchased from an Avon Independent Sales Representative, products must be returned to your Representative along with your receipt within 30 calendar days from the delivery date stated for a replacement, exchange or your money back.

Certain restrictions apply. Details of the Return Policy can be found on your receipt or at avon.ca.

KINDLY SUBMIT YOUR ORDER BY: _____



@MyAvonCanada

1-800-265-2866
avon.ca

FSC (IND.) 4636111
FSC (10) 4636131