

# AVON

CAMPAIGN 4  
AVON.CA

## COLOURS OF **SPRING**

Cool makeup trends from fingertips to lips with new nail essentials and matte eyeshadow shades.



*special gifts*

WITH PURCHASES



# BERRY ON-TREND



Bring on the **BRIGHT BERRIES** this spring with this must-have mani.

Model is wearing Crimson Red.

Chip resistant and quick drying.

★ **Pro Nail Polish**  
Long-lasting nail polish with a high gloss finish. Goes on streak-free for easy application. Vegan. 12.5 ml **12.00 or...**

**ONLY 7.99**

**WITH EVERY 10.00 PURCHASE FROM THIS BROCHURE**  
(excluding pages 2-3)

Art at your  
finger tips.

**fmg Glimmer  
Gel Nail Stickers**

Easy-to-apply  
glossy gel nail  
stickers add a  
fun pattern to  
your nails without  
having to take  
a trip to the  
salon. No mess  
application doesn't  
require additional  
tools or waiting  
for nails to dry!

**Each set includes  
14 stickers.**  
reg. 14.00

**12.00** each set



Ultraviolet Waves  
224-361-5



Stargazer  
224-361-4



Kaleidoscope  
225-114-9



Glimmering Gold  
225-114-8



# ACCENT ON STYLE

Give your mani a little  
*ooh la la* with **SUBTLE SPARKLE**  
and **ARTSY ACCENTS.**

Model is wearing Pro Nail Polish in Light Blue and  
Glimmer Gel Nail Stickers in Ultraviolet Waves.



**NEW**

Get mistake-free  
manis at-home

**fmg Glimmer Nail  
Lacquer Eraser Pen**

Glide over nail edges  
after applying nail  
lacquer for a clean and  
perfected manicure.

4 ml **224-101-7**  
reg. 14.00

**10.99**

**NEW**

2-in-1 base and top  
coat preps and sets nails

**fmg Glimmer Nail Base and Top Coat**

Breathable, nail hugging formula provides a  
smooth base to prime nails and helps prevent  
discolouration and then works as a glossy,  
sheer protective top coat to help keep nails  
strong, shielding your manicure from chipping  
and streaking. Parabens/talc/gluten/phthalates/  
fragrance-free. Vegan. 12 ml **223-519-6**

reg. 14.00

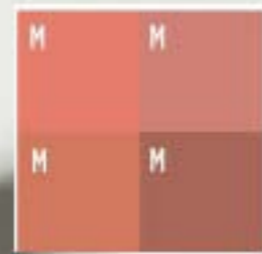
**11.99**

NAIL ERASER  
PEN CLEANS UP  
EDGES

BASE AND TOP  
COAT PREVENTS  
CHIPPING

**NEW**

4 NEW QUADS  
**MATTE  
SHADES!**



**NEW! MATTE**  
Tigress 225-660-9



**NEW! MATTE**  
Icon 225-661-0



**NEW! MATTE**  
Bombshell  
225-660-7



**NEW! MATTE**  
Calypso  
225-660-8

Colour-coordinated shades work together for expressive eye looks that last all day.

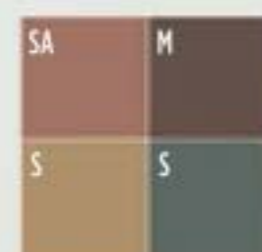
**fmg Glimmer Eyeshadow Quad**  
Perfectly coordinated shadows in matte, satin and shimmer finishes. Vibrant pigments for a pop of colour in a single swipe. Creamy soft powder formula hugs lids with rich colour for all day wear, without the fallout. Paraben/fragrance-free. Available in Multi or All Matte. 6 g total.  
reg. 20.00  
**16.99**



Temptress 223-183-1



Goddess 223-183-5



Siren 223-183-7



Idol 223-183-4



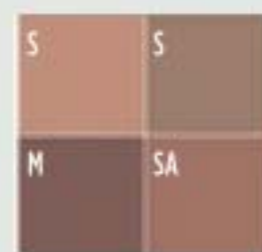
**TOP-SELLER**  
Vixen 223-183-6



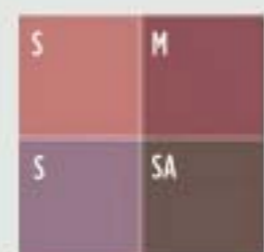
Maven 223-183-2



Mistress 223-183-0



Minx 223-183-3



Darling 223-181-9



Muse 223-181-8

Matte (M)  
Satin (SA)  
Shimmer (S)



Go soft glam in **SOFT BLUSH MATTE SHADES** that are the epitome of darling.

FLIRT  
**IN HUSHED  
TONES**

Model is wearing Matte Quad in Tigress.

## DIAMOND



## WATERPROOF



## CREAM



Rich pigments provide vivid, opaque colour laydown.

### fmg Glimmer Eyeliner

Creamy-smooth formulas glide on effortlessly. Fade-resistant. Comes off easily with soap and water or makeup remover (waterproof).

0.28 g

reg. 13.00

**5.49**



### TREND TIP!

Go beyond your favourite colour and pick a colour that complements both your eyes and your outfit. Remember opposites attract!



# DREAMY & DAZZLING

try **UNEXPECTED COLOUR COMBOS**  
for eyes that really pop!

Model is wearing Diamond Eyeliners in Sugar Plum and Teal Sparkle.

**TREND TIP!**

Start with a creamy blush and then set it with a lightweight powder blush. Experiment and create your own custom shade!



# BLUSH ON THE DOUBLE

Model is wearing Be Blushed Cheek Color in Blushing Nude and Glimmer Powder Blush in Petal Pink.

**LAYER BLUSH** for a **FRESH FLUSHED LOOK** that defines, contours and adds a dewy dimension to cheeks.



For cheeks and lips.

**fmg Glimmer Be Blushed Cheek Color**  
Creamy moisturizing formula glides on smoothly for a natural flush of color. Buildable coverage. Soft dewy finish. With skin-nourishing vitamin E. Free from parabens, phthalates and fragrance. 4 g  
reg. 19.00  
**12.99**

Richly pigmented, silky pressed powder hugs cheeks.

**fmg Glimmer Powder Blush**  
Weightless formula with ultrafine pearl. Buildable coverage and soft matte finish. With skin-nourishing vitamin E. Free from parabens, phthalates and fragrance. 8 g  
reg. 20.00  
**14.99**

**ANY 2 FOR 20.00**

**MIX & MATCH PAGES 11-13**

To get the 2 FOR price, order in multiples of 2.



# LIPS ON POP!

Lips speak volumes with **PUNCHED UP COLOUR** and a sophisticated smile.



Model is wearing Hibiscus.

 Thunder 222-949-2	 Nova 222-949-1	 Morning Glory 224-850-1
 Celestial 222-948-0	 Violet Night 222-949-0	 Fog 222-947-5
 Cyclone 222-947-6	 Twilight 224-850-5	 Equinox 224-850-4
 Desert Moon 224-850-3	 Thunderbird 222-947-9	 Sierra Sunset 222-947-7
 Luna 222-947-8	 Earth Angel 222-947-4	 Windstorm 222-947-3
 Blaze 222-948-3	 Firebolt 222-948-2	 Poppy 222-948-5
 Songbird 222-948-4	 Aster 224-849-7	 Constellation (Shimmer) 224-850-0
 Tulip 224-849-9	 Wild Cherry 224-849-8	 Eclipse 224-849-6
 Whirlwind 222-948-1	 Wildrose 222-948-9	 Plum Blossom 224-850-2
 Hibiscus 222-948-7	 Wildflower 222-948-8	 Rose Angel 222-948-6



Hibiscus

Enticing and inspiring spectrum of versatile and expressive shades.

### fmg Glimmer Satin Lipstick

Lightweight, smooth and creamy formula. Infused with antioxidant pomegranate extract. Buildable medium-to-full coverage. Soft satin finish. 3 g reg. 16.00

**12.99 or...**

**TREND TIP:** Prep and condition lips for maximum payoff. Glimmer Lip Polish and Conditioner sold on page 32.

**ANY 2 FOR 20.00**

**MIX & MATCH PAGES 11-13**

To get the 2 FOR price, order in multiples of 2.





Long-wearing,  
precision, playful  
yet practical.

CATHYCAT

Create a sultry cat-eye look with this rich, long-wearing liquid liner.

**Nine Lives Precision Liquid Eyeliner**

Slim-tip brush delivers a precise line of waterproof and sweatproof colour that will not skip, tug or smudge. 2 ml

**Blackest Black**  
224-973-3  
reg. 26.00

**LIMITED  
TIME OFFER  
16.99**



**fmg CATHYCAT** create eyes that captivate

Take your brow game to new heights!

**High Arch Precision Brow Pencil**

Long-wearing cream-to-powder pencil glides on smoothly, creating a well-defined look. Waterproof formula stays in place without budging or smudging for perfectly gorgeous brows. 0.5 g  
reg. 21.99  
**17.99**



Perfectly designed false lashes add length, dimension and volume.

**LushLashes**

Vegan. Includes one pair of false lashes and glue. Available in two flirty styles!  
Lash glue: 1 g  
reg. 16.00  
**12.99**



No budge, water resistant lashes, from dawn to dusk.

**Play All Day Mascara**

Long-wearing mascara coats each lash with rich pigments that will not budge or smudge. Nourishing formula with a blend of conditioning coconut and argan oils and lash-supporting panthenol. Removes easily with soap and water. 8 g  
**Blackest Black**  
224-780-2  
reg. 23.99  
**19.99**



Lengthen, curl and captivate!

**Curl & Flare Mascara**

Long-lasting mascara applies evenly. Uniquely curved brush provides major lift, extraordinary curl and impressive length. Nourishing formula with a blend of conditioning coconut and argan oils and lash-supporting panthenol. 8 g  
**Blackest Black**  
224-774-1  
reg. 23.99  
**19.99**





# LINE & DEFINE

**A**  
Felt tip  
precision liner

**B**  
Twist cap to  
sharpen



Easy-glide, quick dry precision felt tip liner delivers rich colour with long-lasting wear.

**A. Liquid Eyeliner**  
Create any kind of eye look with this effortlessly smooth formula that does not smudge, run, feather or fade. Matte finish. Transfer/sweat/waterproof. Paraben/phtalate/fragrance-free. Vegan/cruelty-free. 1.1 ml  
**Blackest Black**  
223-883-9  
reg. 18.00  
**14.99**

Your new fave eyeliner with a built-in sharpener for a consistently perfect point!

**B. Always On Point Eyeliner**  
Smudge- and waterproof. Creamy, smooth formula stays colour-true all day. Paraben/sulfate/talc-free. 0.25 g  
reg. 13.00  
**9.99**



Rainstorm

High-performance creamy colour wears all day.

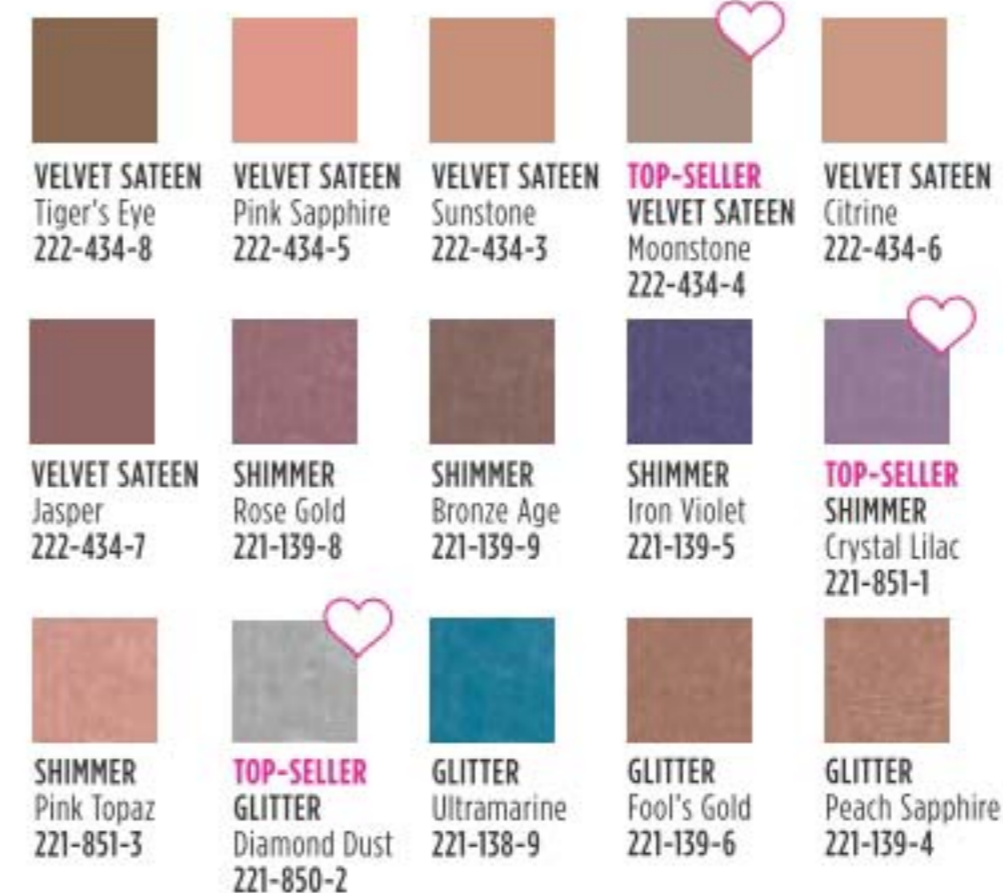
**Longwear Gel Eyeliner**  
Richly pigmented formula dries to an intense matte finish. Use as an eyeshadow base to amp up overlaying colours. Full, opaque coverage. Smudge/flake-proof. Fade-resistant. 6 g  
reg. 18.00  
**14.99**



Dragonfly

Lids look shimmery all day and night.

**Longwear Gel Eyeshadow**  
Long-wearing, creamy weightless formula with delicate pearls that capture and reflect light. Seamless, buildable coverage, never looks heavy or cakey. Crease/smudge-proof. Fade-resistant. 6 g  
reg. 18.00  
**14.99**



Crystal Lilac

Vivid stay-all-day shimmery colour.  
**Glimmershadow Liquid Eyeshadow**  
Long-wearing, no-smudge, no-crease, buildable formula with no messy fallout. Sheer wash of sateen colour to full-on glittery wow. Water-resistant. Paraben/phtalate/sulfate-free. 2 ml  
reg. 17.00  
**11.49**  
Available in 3 ultrafine pearl finishes: Matte Sateen, Shimmer or Glitter.

**fmg CASHMERE EYE & BROW**

Sweep primer on top and bottom lashes.

**Eyelash Primer**  
Visibly lengthens and boosts volume. Nourishing formula keeps lashes looking healthy and strong with biotin and collagen. Maximizes the performance of any mascara for gorgeous, lush lashes. Vegan. Cruelty-free. 10.5 ml  
**224-949-0**  
reg. 32.00  
**26.00**



Apply mascara to primed lashes.

**Ultimate Volume Mascara**  
Rich black pigmented formula with extreme staying power. Long-wearing formula leaves lashes feeling soft. Won't budge, smudge or transfer but removes easily. Vegan. Cruelty-free. 8 ml  
**Rich Black**  
**224-700-0**  
reg. 32.00  
**26.00**



Smoother, brighter, flawless-looking eyes.

**Under Eye Primer**  
Helps concealer wear all day. Infused with caffeine, green tea extract to help diminish the appearance of dark circles, puffiness and fine lines. Paraben/phthalate/fragrance-free. Vegan. 9 g  
**224-948-4**  
reg. 32.00  
**26.00**



Ultra-creamy, weightless pomade fills in brows as it boosts colour.

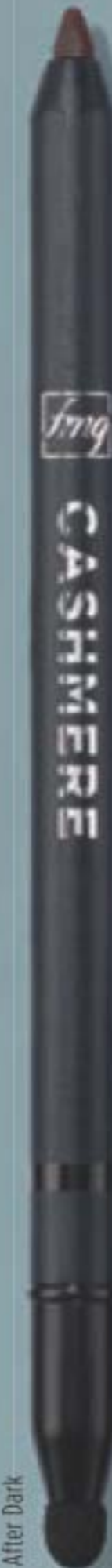
**24-Hour Brow Pomade**  
Smudge-proof, waterproof formula. Matte finish. Includes dual-ended applicator with angled tip brush and spoolie. 4 g  
reg. 35.00  
**28.00**

- |   |  |
|---|--|
|  |  |
| Blonde<br>225-088-8   | Light Brown<br>225-088-7   |
|  |  |
| Brown<br>225-088-6  | Ash Brown<br>225-088-3   |
|  |  |
| Dark Brown<br>225-088-5   | Black Brown<br>225-088-4   |



# CAPTIVATE EYES IN CASHMERE

MAKEUP



After Dark

- |   |   |
|---|---|
|  |  |
| After Dark<br>223-066-5   | Midnight<br>223-066-4   |
|  |  |
| Nightfall<br>223-066-3  | Pitch Black<br>223-066-2  |

Intense decadent black shades with dazzling jewel undertones for dramatic results.

**24-Hour Cream Eyeliner**  
Comfortable kohl formula with 24-hour wear. Waterproof, matte finish. Smudge applicator to blend. Vegan. Paraben/phthalate/fragrance-free. 1.31 g  
reg. 26.00

**LIMITED  
TIME  
OFFER  
14.99**



## MASCARAS



Length and volume.  
**Love at 1st Lash Mascara**  
 9 ml  
**Blackest Black**  
 220-247-9  
 reg. 23.00  
**16.99**



Waterproof formula.  
**Love at 1st Lash Waterproof Mascara**  
 8.5 ml  
**Blackest Black**  
 222-014-9  
 reg. 23.00  
**16.99**



Waterproof formula.  
**Wash-Off Waterproof Mascara**  
 Washes off with soap and water. 6 g  
**Black**  
 100-388  
 reg. 14.00  
**11.49**



**NEW LOOK**  
 Super volume.  
**fmg Glimmer SuperShock Volumizing Mascara**  
 Instant high-gloss lushness. 10 ml  
**Black**  
 224-784-9  
 reg. 16.00  
**12.99**



**NEW LOOK**  
 Long and healthy.  
**fmg Glimmer SuperExtend Nourishing Mascara**  
 Enriched with vitamin E. 7 ml  
**Black Brown**  
 224-785-1  
**Black** 224-785-0  
 reg. 16.00  
**12.99**

With argan & coconut oils

## BROWS



Light Blonde  
223-412-6

Tawny  
223-412-8

Blonde  
223-412-7

Light Brown  
223-413-0

Dark Brown  
223-412-9

Brunette  
223-413-1

Retractable, self-sharpening.  
**fmg Glimmer Brow Definer**  
 Smudge/transfer/sweat/waterproof. 0.28 g  
 reg. 13.00  
**5.99**

### fmg Colors of LOVE Hi-Brow Sculpting Brow Gel

With moisturizing aloe and nourishing hyaluronic acid. Soft matte finish. Paraben/phthalate/fragrance-free. 3.3 ml

**Universal Love (Clear)** 224-555-6  
 reg. 24.00  
**18.99**

### fmg Colors of LOVE Hi-Brow Tinted Brow Gel

Water-resistant/smudge/flake-proof formula fills, grooms and shapes for 24-hour wear. With clay and vitamin E. Soft matte finish. 3.3 ml

reg. 24.00  
**18.99**



Blonde  
223-284-4

Soft Brown  
223-284-5

Medium Brown  
223-284-6

Brown Black  
223-284-7

Get every fine hair!

**Daily Beauty Tools Tweezers**  
 Amp up your beauty routine with angled tweezers. Stainless steel. 9 cm L.  
**224-612-4**  
 reg. 6.00  
**4.99**



Trim with ease.

**Daily Beauty Tools Eyebrow Trimmers**  
 Stainless steel blade trims fine hairs with precision. Great for shaping arches. ABS/stainless steel. 13 cm L. Includes cap.  
**223-877-9**  
**3.99 the set**  
**limited quantities**



Set of 2 razors



THE MULTI TASKERS

**Filter Serum Tint Foundation**

Lightweight formula infused with **hyaluronic acid, vitamin E** and a **berry complex**. Creamy formula transforms to a demi-matte powder finish for a beautiful veil of colour. Buildable sheer-to-medium coverage. Suitable for all skin types. Talc/paraben/fragrance-free. Includes sponge applicator. 9 g  
 reg. 24.00  
**21.99**



**fmg MATCH** perfect for all skin types and tones

Helps control oil and create a shine-free canvas.

**Blur Oil Control Primer Balm**

Special blurring powder microspheres help reduce the look of fine lines and pores. With **nutmeg extract** for **antioxidant benefits**. Includes a sponge applicator for quick touch-ups. Talc/paraben-free. 17 g **224-364-5**  
 reg. 28.00  
**22.99**

Sheer mattifying formula helps control oil



Helps camouflage as it corrects and brightens.

**Corrector Brightening Perfector**

Creamy veil of colour helps blur flaws and reduce the appearance of fine lines, dark circles and blemishes. Buildable sheer-to-medium coverage with a demi-matte finish. Talc/paraben/sulfate/alcohol/fragrance-free. 3.2 g  
 reg. 19.00  
**14.99**



**FREE**  
 \$11 VALUE

**Avon Pro Flawless Makeup Blender**

with every 2 purchases pages 22-31

In case of unforeseen demand, Avon reserves the right to substitute with a product of equal or greater value.

**fmg MATCH** perfect for all skin types and tones

# POWDER POWER

Keep your complexion looking flawless **on-the-go!**

Mineral-infused loose powder and brush in one!

### Set Finishing Powder To-Go

Creates an invisible veil that controls shine and sets makeup. Lightweight formula diffuses light and visibly blurs pores and fine lines. Silky-soft matte finish never looks cakey. Talc/paraben/fragrance-free, 2.7 g  
**222-878-0**  
 reg. 24.00  
**19.99**



Twist. Shake. Dust.  
Take me everywhere!

Blend of ultrafine rose quartz, ruby and tourmaline.

### Dust Finishing Powder

Weightless loose mineral powder with soft matte finish. Wear alone or to set makeup. Includes no-spill twist-and-lock sifter. Talc/oil/paraben-free. 6 g  
 reg. 24.00  
**19.99**



Creates an invisible veil that controls shine and sets makeup.

### Set Finishing Powder

Mineral-infused loose powder creates an invisible veil. Lightweight formula diffuses light and visibly blurs pores and fine lines. Silky-soft matte finish never looks cakey. Includes powder puff. Talc/paraben/fragrance-free. 6.5 g  
**224-487-0**  
 reg. 24.00  
**19.99**



**Magix Tint Radiant Tinted Moisturizer**  
 Buildable coverage. With **passion fruit, chia** and **sunflower seed oil** and **antioxidant vitamins E** and **B5**. For normal, dry, combination and oily skin. Paraben-free.  
 30 ml  
 reg. 20.00  
**15.99**



- |                           |                          |
|---------------------------|--------------------------|
|                           |                          |
| Fair Light<br>222-941-3   | Fair<br>223-196-1        |
|                           |                          |
| Light Medium<br>223-196-3 | Light<br>223-196-2       |
|                           |                          |
| Medium<br>223-196-4       | Soft Medium<br>222-941-4 |
|                           |                          |
| Tan Deep<br>222-941-5     |                          |
|                           |                          |
| Medium Deep<br>223-196-5  |                          |
|                           |                          |
| Deep<br>(R) 223-196-6     |                          |

Model is wearing Soft Medium.



**FREE**  
\$11 VALUE

**Avon Pro Flawless Makeup Blender**

with every 2 purchases pages 22-31

In case of unforeseen demand, Avon reserves the right to substitute with a product of equal or greater value.

**fmg CASHMERE COMPLEXION** with 24 hours of comfortable wear

**Cushion Foundation**

Lightweight, breathable formula applies evenly, helping to cover the look of imperfections with buildable velvety soft-matte colour. Light-to-medium coverage. Includes sponge puff applicator. Paraben/phtalate/fragrance-free. 12 g  
 reg. 39.00  
**36.00**



W215 224-539-9	C215 224-540-1	W225 224-540-0	N225 224-540-2
C225 224-540-4	N235 224-540-3	W235 224-540-5	W245 224-540-6
N245 224-540-8	W255 224-540-9	N255 224-541-0	W265 224-541-1
N265 224-541-3	W275 224-541-2	W285 224-541-4	N275 224-542-8

Available in: Cool (C), Neutral (N) and Warm (W) undertones.

**Complexion Compact Powder Foundation**

Can be used wet or dry, as a foundation or setting powder. Buildable medium-to-full coverage. Amino-acid coated pigments control shine and visibly smooth skin for perfected, all-day wear. With collagen, lavender oil, artichoke and chamomile extracts. Mirror compact and sponge for seamless touch-ups. 9.5 g  
 reg. 52.00  
**42.00**

N110 (N) 222-137-5	W110 (W) 222-137-6	W120 (W) 222-137-7	C110 (C) 222-137-8	N120 (N) 222-137-9	W130 (W) 222-138-0
W140 (W) 222-138-2	W150 (W) 222-138-1	W160 (W) 222-138-3	N130 (N) 222-138-4	N140 (N) 222-138-5	W170 (W) 222-138-6
				Available in Cool (C) Neutral (N) and Warm (W) undertones.	
N150 (N) 222-138-7	W180 (W) 222-138-8	N160 (N) 222-138-9	C120 (C) 222-139-0		



Available in Cool (C), Neutral (N), Warm (W) and Warm Olive (WO) undertones.

Corrects dark circles and imperfections.

**24-Hour Concealer**  
 Creamy lightweight texture. Soft focus matte finish. With antioxidant botanical extract. Vegan. 6 ml  
 reg. 31.00  
**23.00**

Sugar (W) 223-391-1	Mochi (N) 223-391-2	Cheesecake (C) 223-391-3	Parfait (W) 223-391-4	Macaroon (N) 223-391-5	Tart (WO) 223-391-6
Butterscotch (W) 223-391-7	Waffle (W) 223-391-8	Biscuit (WO) 223-391-9	Tres Leches (N) 223-392-0	Toffee (W) 223-392-1	Cupcake (N) 223-392-2



**FREE**  
 \$11 VALUE

**Avon Pro Flawless Makeup Blender**

with every 2 purchases pages 22-31

In case of unforeseen demand, Avon reserves the right to substitute with a product of equal or greater value.

## fmg COLORS OF LOVE + CORRECTOR

### Kiss Me Cushion Highlighter

Skin-loving colour, water-based formula with hyaluronic acid. Buildable sheer-to-medium coverage. 8 g

reg. 38.00  
32.00



### Sun-Kissed Cushion Bronzer

Instantly hydrates, soothes and visibly plumps skin, plus rosemary extract with antioxidant benefits. Buildable sheer-to-medium coverage. Paraben/phthalate/fragrance-free. 8 g

reg. 38.00  
32.00



### Kiss Me Cushion Blush

Water-based formula with hyaluronic acid instantly boosts hydration. 8 g

reg. 38.00  
32.00



### Illuminating Cushion Corrector

Buildable formula provides sheer-to-medium coverage for a flawless, radiant finish. Includes sponge applicator and mirror. Paraben/sulfate/fragrance-free. 15 g

reg. 22.00  
18.00



## fmg COLORS OF LOVE

Soft radiant glow.

### Glow Balm Illuminating Stick

Lightweight creamy formula with ultrafine pearls blend for a soft, natural, radiant glow. 8 g

reg. 23.00  
18.99



Warm, healthy-looking glow.

### Glow Balm Bronzing Stick

Lightweight creamy formula with ultrafine pearls blend for a warm, healthy-looking glow. 8 g

reg. 23.00  
18.99



## DUAL-ENDED GLOW STICK

**Glow Balm Duo Illuminating Stick**  
Lightweight formula with multi-colour, ultrafine and bold pearls, glides on smoothly for a soft, shimmery finish. 8 g total.

**Heartthrob 222-877-8**  
reg. 30.00

**LIMITED TIME OFFER**  
**17.99**



**FREE**  
\$11 VALUE

**Avon Pro Flawless Makeup Blender**

with every 2 purchases pages 22-31

In case of unforeseen demand, Avon reserves the right to substitute with a product of equal or greater value.



Model is wearing Heart-Warming Bronzer in Golden Days and Glow Beads Illuminating Powder in Wild Hearts.

## fmg COLORS OF LOVE

### Heart-Warming Bronzer Matte Mineral Powder

Skin-loving mineral powder bronzer adds effortless warmth to complexion. Helps reduce the appearance of shine. Matte finish. Vegan. 11.8 g  
reg. 35.00  
**29.00**



My Sunshine  
222-940-3



Sunset Kiss  
222-940-5



Golden Days  
222-940-4



### Glow Beads Illuminating Powder

Heart-shaped and round beads create instant radiance. Lightweight formula with pearlescent finish. Vegan. 20 g  
reg. 42.00  
**35.00**



Wild Hearts  
222-939-8



Queen of Hearts  
222-939-7



Queen of Hearts

### Blushing Beads Powder Blush

Lightweight powder formula provides a delicate pearlescent finish that is perfect for all skin tones. Paraben/pthalate/fragrance-free. 20 g  
reg. 42.00  
**35.00**



Butterflies  
224-506-3



Butterflies

## TPSY

Get kiss-ready with the perfect partner.

### Forever Lip Marker

Hydrating formula that stays on lips all day. Unique marker design allows for easy application and a vibrant, juicy look. Kiss-proof. 2.5 ml  
reg. 22.00  
**18.00**



Felt Pink  
224-860-0

Sour Candy  
224-860-1

Crazy Rabbit  
224-860-2

Orangeyred  
224-860-3

Blackberrybite  
224-860-4

A drop of glow!

### I Want to Highlight You Liquid Highlighter

Use as a gloss primer and highlighter, or mix into your makeup to customize your shine! Solar Glow Highlighting Complex formula with moisturizing ingredients and ultrafine pearls for a subtle dewy finish. 30 ml  
reg. 30.00  
**25.00**



Glow  
224-859-7

Gloss? Balm? Even better!

### Shiny Lip Oil

A deeply moisturizing lip oil that is instantly absorbed with a tint of colour and matches every lip. **No hassle. No residue. No stickiness.** Infused with jojoba, argan and castor oil. Vegan. Earth friendly packaging. Use alone or over your fave Forever Lip Marker. 3.7 g  
reg. 22.00  
**18.00**



Love Galore  
224-859-8



**FREE**  
\$11 VALUE

### Avon Pro Flawless Makeup Blender

with every 2 purchases pages 22-31

In case of unforeseen demand, Avon reserves the right to substitute with a product of equal or greater value.



# NOURISHING LIP CARE

Your prep steps  
for a perfect pout.

Model is wearing Glimmer Lip Glaze in Sheen.



## POLISH

Helps polish and prepare lips for effortless lip colour application.

### *fmg* Glimmer Lip Polish

A blend of vitamin E, moisturizing squalane, and extracts of blueberry, strawberry and raspberry, leaves lips feeling supple, pampered and soft. Sugar-based formula gently buffs away dry, flaky skin for softer, smoother lips. 10 g  
**224-935-1**  
reg. 20.00  
**15.99**



## CONDITION

Moisturizes, protects and nourishes lips.

### *fmg* Glimmer Lip Conditioner

With mango seed butter, vitamin E, and jojoba and sunflower seed oils. Leaves dry, cracked lips feeling soft and smooth. 3.5 g  
**223-379-6**  
reg. 16.00  
**12.99**



## PLUMP

Non-sticky creamy formula with hydrating castor seed oil and antioxidant vitamin E.

### *fmg* Glimmer Lip Plumper

Volulip™ plumps pout, softens and moisturizes lips. Dimensional wet shine. No stinging or burning, just fuller lips! Shiny gloss finish gives hours of wear without feathering. Universally flattering, brilliant shade. Refreshing peppermint scent. 9 ml  
**Brilliance 223-379-9**  
reg. 17.00  
**13.99**



## GLOSS

Glossy radiance in shimmery colours.

### *fmg* Glimmer Lip Glaze

Smooth, lip-hugging texture gives hours of wear without feathering. Non-sticky creamy formula with antioxidant vitamin E. Buildable sheer-to-medium coverage with lustrous glossy finish. 9 ml  
reg. 16.00  
**12.99**





Model is wearing Matte Lipcream in Rich Berry and Essence Lipcream in Honey Mandarin.

True Red (S) 222-519-8 (M) 222-432-8	Soft Crimson (S) 222-519-7	Soft Mauve (S) 222-519-4 (M) 222-432-4	Nude Pink (M) 222-432-1	Nude Blush (S) 222-519-3
<b>TOP-SELLER</b> Rich Berry (S) 222-519-6 (M) 222-432-6	Dark Cherry (S) 222-519-5 (M) 222-432-5	Nude Beige (S) 222-519-2	<b>TOP-SELLER</b> Nude Rose (M) 222-432-0	

**fmg Cashmere Lipcream**

Infused with antioxidant vitamins C and E, shea butter, avocado, and coconut oils to nourish and soften lips. **Satin finish (S) in traditional case and matte finish (M) in chic slimline case.** Each, 3.5 g reg. 32.00 **26.00**

Satin shades are while supplies last.



Rich Berry

Mauvelous

# CASHMERE FOR LIPS

CLEAR LACQUER

DUAL ENDED

**Step 1:**

Apply the lip colour and let dry.

**Step 2:**

Follow with clear lacquer top coat.

LIP COLOUR



Stunning Scarlet  
224-731-9

Berry Bliss  
224-732-0

**TOP-SELLER**  
Pinkfection  
224-732-1

Ravishing Rose  
224-731-8

Beautifully Bare  
224-731-7

Mauvelous  
224-731-6



MAKEUP

Experience pure lip luxury.

**fmg Cashmere Rouge Lacquer**

Ultra-pigmented lip colour and brilliant clear lacquer deliver high-performance wear throughout the day. Full-coverage colour dries quickly without feathering. Moisturizing top coat locks colour in place for a high shine finish that keeps lips looking beautiful and feeling comfortable for hours. Transfer, smudge and feather-proof. Vegan. Free from parabens. 5.6 g total weight. **reg. 32.00 26.00**

## LIP COLOUR



Long-wearing retractable liners for lips.

### fmg Glimmer Lipliner

Super-precise application for high-definition, sculpted lips. Prevents feathering and extends the wear of lip colour. Fade-resistant. Matte finish. 0.28 g  
reg. 13.00  
5.99



Candy Apple

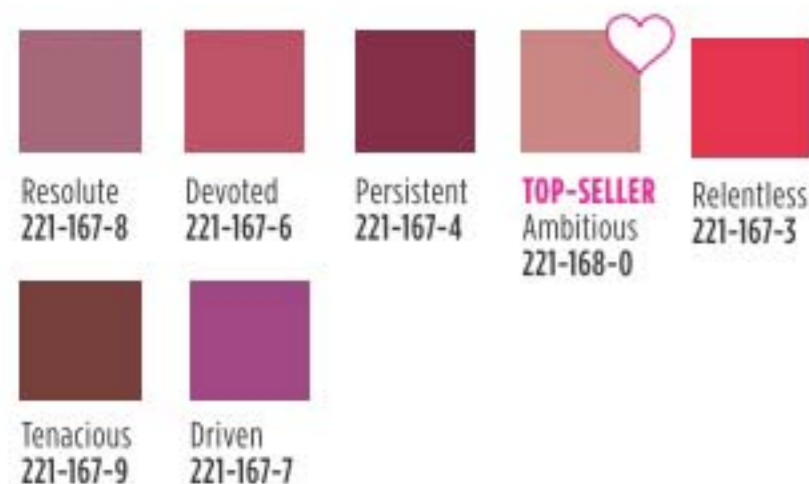


### 2-in-1 Lip Tattoo Lip Line & Fill Duo

Dual-ended, semi-permanent lip stain with all-day wear. Infused with sunflower seed oil to help hydrate lips. Paraben/gluten/phthalate/sulfate-free. Vegan. 1.6 ml  
reg. 19.00  
13.99



Inked Rose



Weightless, non-drying formula that lasts for hours.

### Mattitude Soft Matte Liquid Lip

Micronized pigments release vivid colour. Poppy seed oil and vitamin E nourish and smooth lips. Paraben/sulfate/phthalate-free. 4 ml  
reg. 19.00  
13.99



Relentless

Let us help you find your perfect formula and shade at [avonlipmatch.ca](http://avonlipmatch.ca)



### Crave Lip Gloss

Addictive gourmand scents and ultra shine. Vitamin E formula moisturizes, smooths and softens lips. 9 ml  
reg. 13.00  
8.49

Decadent gourmand lip gloss scents

## LINERS, GLOSS & COLOUR



A perfect nude pout.

### Birthday Balm Lip Crayon

Moisturizing formula rich in non-GMO shea butter for soft supple lips. Mineral oil/paraben/phthalate/gluten-free. 2.7 g  
reg. 17.00  
13.99



VDL for dreamers and glow-getters!



**Expert Color Primer for Eyes**

Enhances shadow shades for a more vibrant, brighter result. Infused with skin-caring Tahitian black pearl powder and silk protein. 6.5 g

**A. Original** Great for your everyday basic makeup routine. **222-935-0**

**B. Serenity** Great for matte shadows or to brighten dull eyes. **222-935-1**

reg. 35.00  
**28.00**



## UPDATE YOUR BROWSER

Dual-ended slim, flat-cut brow pencil and spoolie fills, grooms and defines brows.

**Eyefine Double Edge Eyebrow Pencil**

Wax-to-powder long-lasting formula resists breakage and glides on smoothly. Hugs to brows effortlessly. Flexible shades create well groomed, natural-looking brows. Smudge-proof. 0.2 g

reg. 35.00  
**28.00**



## PRIME RESULTS

Multitasking primers lock down and extend the wear of base makeup.



VDL

MAKEUP

For a velvety smooth, healthy-looking and radiant complexion.

**Lumilayer**

**Rosy Perfect Primer**

Instantly moisturizes, blurs pores and helps improve the look of skin tone. Infused with skin caring damask rose water, rose enfleurage oil, and lady's mantle.

30 ml **222-935-3**  
reg. 60.00  
**46.00**

Sparkling blend of pearls reflect light to create a warm radiant glow.

**Lumilayer Primer Fresh**

With VDL Lumilayer Technology™. Over 70% moisturizing essence for continuous all-day hydration and smooth skin. 30 ml **222-306-9**

reg. 58.00  
**46.00**

Enhances the wear of foundation for a long-lasting silky texture.

**Lumilayer Primer**

With VDL Lumilayer Technology™. Visibly brightens, plumps and sculpts the look of skin for added dimension and volume. Can be worn alone, under foundation, or as a sheer highlighter.

30 ml **222-306-8**  
reg. 58.00  
**46.00**



Premium silky, vegan bristles deliver professional results.

## MAKEUP BRUSHES

**A. fmg Eyeshadow Blending Brush**  
With a soft, domed crease brush on one end and a flattened, all-over eyeshadow brush on the other to apply and buff eyeshadow. 15 cm L. **224-615-9** reg. 21.00 **15.99**

**B. fmg Precision Eye Brush**  
With a pointed pencil brush on one end and an angled eyeliner brush on the other to highlight or add depth to eyes. 13 cm L. **224-615-5** reg. 21.00 **15.99**

**C. fmg Blush & Contour Brush**  
With a fluffy angled contour brush on one end and a tapered, oval blush brush on the other to add colour and dimension. 18 cm L. **224-615-8** reg. 30.00 **23.99**

**D. fmg Complexion Blending Brush**  
With a dense, rounded buffing foundation brush on one end and a precise rounded concealer brush on the other to create a flawless canvas. 17 cm L. **224-615-6** reg. 31.00 **24.99**

**E. fmg Kabuki Brush**  
With soft, angled bristles to effortlessly blend pressed or loose powder formulas. Retractable. Cap keeps the brush head safely covered when not in use. 10 cm L. **223-424-7** reg. 24.00 **18.99**

## KEEP YOUR ESSENTIALS AT THE READY!

Oversized organizer with plenty of compartments and pockets.



Contents not included.



**fmg Vanity Organizer**  
Makeup-themed print. Four compartments with two removable inside dividers, three outer pockets and lattice elastic straps. Folds up for easy storage. 24 cm L x 15 cm W x 13 cm H. Polyester. **225-067-5** reg. 40.00 **32.99**

## BEAUTY ESSENTIALS

Travel-friendly resealable pack.

### **fmg Makeup Remover Wipes**

Unscented wipes gently and easily remove it all... from stubborn makeup to dirt and oil. Leaves skin feeling soft and clean without leaving behind a heavy residue.

**225-523-0**

reg. 13.00

**10.49** each pack

Pack of 24  
WIPES



### **Daily Beauty Tools Scrunchie Band**

Use when cleansing face, applying makeup or showering. Polyester. Machine wash and dry.

**224-991-2**

reg. 7.99

**5.99**

Keeps hair out  
of your face



Infused with activated charcoal.

### **Daily Beauty Tools Charcoal & Konjac Cleansing Puff**

Wet puff and apply cleanser to face. Massage skin in small circular motions for a gentle, deep cleanse. Rinse puff after use and hang to dry. Reusable. Includes hanging cord. 13 x 18 cm

**223-877-8**

reg. 6.99

**5.99**

limited  
quantities

Infused with  
charcoal  
known to help  
eliminate  
impurities



Set it and forget it.

### **True Color Makeup Setting Spray**

Helps set foundation, blush and eye makeup without drying skin. Ultra-lightweight, fast-drying spray. 60 ml

**114-594-4**

reg. 21.00

**13.99**



**AFTER:**  
Excess oil is absorbed, leaving  
skin with a light matte finish.



**BEFORE:** Skin looks  
uneven and shiny.



Includes cap  
to protect  
roller when  
not in use



360° rotating  
volcanic stone  
roller

**NEW**

Helps to absorb  
excess oil, leaving  
skin with a light  
matte finish.

### **fmg Oil Rewind Roller Ball**

Control shine  
throughout the day  
without disturbing  
makeup. Ideal for  
touching up makeup  
on the go. Reusable  
and washable. Clean  
after each use. 3 cm  
W x 8 cm H. Plastic  
handle.

**225-664-7**

reg. 23.00

**18.99**

## BEAUTY ESSENTIALS

# OIL- ABSORBING VOLCANIC ROLLER

Makes shine and grease  
disappear, instantly!

**NEW**

**Studio 1886  
Gentleman  
Aftershave Lotion**  
200 ml  
**VALUE 23.00**



**FREE**  
**WITH EVERY 30.00  
PURCHASE FROM  
PAGES 44-51**

In case of unforeseen demand, Avon reserves the right to substitute a product with one of equal or greater value.

A new bold and dynamic Studio 1886 heroic fragrance that captures the ever-evolving journey of the modern man. The perfect balance of confidence and strength.



**NOTES**  
*Top:* Bergamot, **Cardamom**, Juniper  
*Mid:* Coriander, **Geranium**, **Black Pepper**, Lavender  
*Base:* **Cedarwood**, Guaiacwood, Patchoulchouli

**NEW**

**Studio 1886  
Gentleman  
Eau de Toilette  
woody fougère**  
50 ml  
**225-000-9**  
reg. 70.00  
**55.00**



**Studio 1886  
Legendary  
Eau de Toilette  
woody fougère**  
Vibrant lemon eases into crisp lavender for a fresh faceted opening. Notes of patchouli and salted amber provide complexity and depth, revealing exquisite ingredients for a memorable fragrance experience.  
50 ml **222-706-0**  
reg. 70.00  
**55.00**

STUDIO 1886  
**GENTLEMAN**

BE ICONIC. BE LEGENDARY. BE A GENTLEMAN.

## PLATINUM ULTIMATE

Be drawn in by an alluring blend of crisp pear, violet and warm amber.

<b>Mesmerize Platinum Ultimate Eau de Toilette</b> <i>woody floral</i> Crisp pear, violet and warm amber. 100 ml 223-057-7 reg. 50.00 <b>39.99</b>	<b>Body Wash</b> 200 ml 222-971-4 reg. 28.00 <b>21.99</b>
	<b>Body Moisturizer</b> 200 ml 222-970-1 reg. 28.00 <b>21.99</b>



## ULTIMATE

Magnetic blend of black pepper, zesty pomelo and sensuous patchouli.

<b>Mesmerize Ultimate Eau de Toilette</b> <i>woody fougère</i> 100 ml 222-952-5 reg. 50.00 <b>39.99</b>	<b>Body Wash</b> 200 ml 223-057-9 reg. 28.00 <b>21.99</b>
	<b>Body Moisturizer</b> 200 ml 223-058-0 reg. 28.00 <b>21.99</b>



**FREE**  
Aftershave Lotion  
details page 45



Sophisticated,  
seductive and  
distinctive.

## MESMERIZE BOLD & CONFIDENT

## BLACK

Pepper, addictive nutmeg and tonka bean.

**Mesmerize Black Eau de Toilette**  
*woody fougère*  
100 ml  
108-628-3  
reg. 35.00  
**24.99**



## MESMERIZE

Bergamot, spicy cardamom and amber.

**Mesmerize Cologne**  
*fresh aromatic*  
100 ml  
222-370-2  
reg. 35.00  
**24.99**





# BLACK SUEDE

A smooth fragrance of warm, woody notes highlighted by a leather accord.

Eau de Toilette  
fresh aromatic  
100 ml  
223-988-3  
reg. 32.00  
19.99



# BLACK SUEDE ULTIMATE

Effortlessly cool, unreservedly charming and brimming with confidence.



Black Suede Pack  
woody fougère  
896-462-9  
**3-PIECE PACK**  
**39.99**  
77.00 VALUE

Includes:  
• Black Suede Ultimate  
Eau de Toilette 100 ml  
• Black Suede Ultimate  
Body Moisturizer  
200 ml  
• Black Suede Bar Soap  
90 g

**FREE**  
Aftershave Lotion  
details page 45



# EAU SO CHIC SCENTS FOR HIM

**Alpha**  
Eau de Toilette  
*fresh aromatic*  
Charismatic  
verbena,  
spiced  
cardamom  
and refined  
cedarwood.  
100 ml  
**104-118-3**  
reg. 35.00  
**24.99**



**Exploration**  
Eau de Toilette  
*fresh aromatic*  
Fresh orange,  
silver sage and  
vetiver. 75 ml  
**122-508-2**  
reg. 35.00  
**24.99**



**Blue Escape**  
Eau de Toilette  
*fresh aromatic*  
Ocean mist,  
white pepper,  
tropical  
driftwood  
and musk.  
75 ml  
**391-946**  
reg. 35.00  
**24.99**



**Perceive Cologne**  
*fresh aromatic*  
Sparkling citrus, sage  
and cedarwood.  
100 ml **831-73**  
reg. 35.00  
**24.99**



**Prime**  
Eau de Toilette  
*fresh aromatic*  
Lavender,  
spearmint  
and cedarwood.  
75 ml  
**114-322-0**  
reg. 35.00  
**24.99**



**FREE**  
Aftershave Lotion  
details page 45

# WILD COUNTRY

Capture your untamed  
spirit with a rugged  
blend of fresh and  
aromatic notes.

**NOTES**

*Top:* Coriander,  
Bergamot  
*Mid:* Lavender,  
Geranium  
*Base:* Coumarin,  
**Sandalwood**

**Wild Country**  
*fresh aromatic*

**Bar Soap**  
Moisturizes  
as it gently  
cleanses.  
90 g  
**224-707-3**  
reg. 9.00  
**5.99**

**Cologne\***  
88 ml **836-47**  
reg 32.00  
**19.99**

**Aftershave  
Splash**  
118 ml  
**222-574-4**  
reg. 19.00  
**14.99**

\*Packaging may vary.



# HAIKU

## poetry for your senses

A fresh green floral blooming with delicate jasmine, yuzu, muguet and blonde woods.

**Haiku Pack**  
*fresh green floral*  
Includes:

- Roll-On Anti-Perspirant Deodorant 75 ml
- Body Scrub & Wash 200 ml
- Haiku Eau de Parfum 50 ml

896-463-3

**3-PIECE PACK  
ONLY  
30.00**

57.00 VALUE



## HAIKU COLLECTION

**Haiku Sacred Intense**  
*fruity floral*  
Uplifting tangerine,  
rose de mai and  
earthy driftwood.

**Eau de Parfum**  
50 ml  
222-672-0  
reg. 45.00  
**34.99**

**Luxury Body**  
**Crème**  
150 ml  
222-621-6  
reg. 33.00  
**26.99**



**Haiku Reflection**  
**Eau de Parfum**  
*fresh green floral*  
Radiant water  
accord, acacia  
blossom and  
amber wood.  
50 ml  
115-861-8  
reg. 35.00  
**24.99**



**Haiku Kyoto**  
**Flower Intense**  
**Eau de Parfum**  
*fresh green*  
*floral*  
An elegant,  
potent bouquet  
of violet leaf,  
white peony  
and soft cotton  
musk. 50 ml  
222-619-7  
reg. 45.00  
**34.99**



**Haiku**  
**Kyoto Flower**  
**Eau de Parfum**  
*fresh green floral*  
Violet leaf, white  
peony and soft  
cotton musk.  
50 ml  
435-140  
reg. 35.00  
**24.99**



**FIND  
YOUR  
ZEN**  
with the  
Haiku  
collection

**Haiku**  
*fresh green floral*  
Japanese yuzu, delicate  
muguet and blonde woods.

**Intense**  
**Eau de Parfum**  
10 ml (travel spray)  
222-952-4  
reg. 22.00  
**18.99**  
50 ml 222-619-6  
reg. 45.00  
**34.99**  
**Hair & Body Mist**  
96 ml 223-058-7  
reg. 22.00  
**16.99**  
**Body Lotion**  
200 ml 155-600  
reg. 17.00  
**8.99**



## RARE COLLECTION

**Rare Platinum Intense**  
*amber floral*  
Iris, warm ambrette  
and smooth vetiver.

**Luxury Body  
Crème**  
150 ml  
222-626-6  
reg. 33.00  
26.99



**Eau de Parfum**  
50 ml  
222-671-9  
reg. 45.00  
34.99

**Rare Amethyst**  
**Eau de Parfum**  
*fruity floral*  
Sweet plum,  
blooming  
violet and  
sandalwood.  
50 ml  
102-456-8  
reg. 35.00  
24.99



**Rare Gold**  
**Eau de Parfum**  
*amber floral*  
Mandarin zest,  
ylang-ylang and  
golden amber.  
50 ml  
102-456-9  
reg. 35.00  
24.99



**Rare Gold Intense**  
**Eau de Parfum**  
*amber floral*  
Opulent notes  
of mandarin zest,  
ylang-ylang  
and golden  
amber. 50 ml  
222-619-9  
reg. 45.00  
34.99



**Rare Pearls**  
*soft floral*  
Shimmering magnolia,  
white pepper and creamy  
rosewood.

**Rare Pearls Original**  
50 ml  
102-457-0  
reg. 35.00  
24.99

**Rare Pearls Intense**  
**Eau de Parfum**  
50 ml 222-619-8  
reg. 45.00  
34.99

**Hair & Body Mist**  
96 ml 223-058-8  
reg. 22.00  
16.99

**Shimmering Body Mist**  
96 ml 224-615-7  
reg. 28.00  
21.99

**Body Lotion**  
200 ml 102-953-3  
reg. 17.00  
8.99



## FAR AWAY COLLECTION

**Far Away  
Infinity Intense  
Eau de Parfum**  
*fruity floral*  
A potent, luminous  
blend of radiant  
bergamot,  
jasmine sambac  
and sensual  
sandalwood.  
50 ml  
**222-619-1**  
reg. 45.00  
**34.99**



**Far Away Infinity  
Eau de Parfum**  
*fruity floral*  
Bergamot,  
jasmine sambac  
and sensual  
sandalwood.  
50 ml  
**223-197-4**  
reg. 35.00  
**24.99**



**Far Away Gold  
Eau de Parfum**  
*amber floral*  
Ylang-ylang,  
Indian jasmine  
and Madagascar  
vanilla. 50 ml  
**223-197-1**  
reg. 35.00  
**24.99**



**Far Away Beyond Intense**  
*woody floral*  
A potent blend of alluring jasmine, fresh  
orange blossom and warm tonka bean.

<b>Luxury Body Crème</b> 150 ml <b>222-621-2</b> reg. 33.00 <b>26.99</b>	<b>Eau de Parfum Travel Spray</b> 10 ml <b>222-952-3</b> reg. 22.00 <b>18.99</b>
<b>Eau de Parfum</b> 50 ml <b>222-671-8</b> reg. 45.00 <b>34.99</b>	



## FAR AWAY

**Far Away  
amber floral**  
A potent blend  
of freesia, jasmine  
absolute and  
enticing amber.

**Intense  
Eau de Parfum**  
50 ml **222-619-0**  
reg. 45.00  
**34.99**

**Original  
Eau de Parfum**  
50 ml **223-198-3**  
reg. 35.00  
**24.99**

**Body Lotion**  
200 ml **223-198-5**  
reg. 17.00  
**8.99**

**Body Scrub  
& Wash**  
200 ml  
**225-001-2**  
reg. 17.00  
**13.99**

**Hair & Body Mist**  
96 ml  
**223-058-6**  
reg. 22.00  
**16.99**

**Shimmering  
Body Mist**  
96 ml **224-616-0**  
reg. 28.00  
**21.99**

**NEW**





## Imari Collection SEDUCTIVE SCENTS

Let your passion bloom.

**Imari Amor**  
Eau de Parfum  
Travel Spray  
*woody floral*  
10 ml  
224-353-5  
reg. 20.00  
14.99



Flirtacious blend of seductive rose, playful jasmine and warm woody notes of sandalwood.

**Imari Amor**  
Eau de Parfum  
*woody floral*  
50 ml  
224-353-2

Radiant bergamot, opulent jasmine and vanilla orchid.

**Imari**  
Eau de Toilette  
*amber floral*  
50 ml  
222-370-1

Luscious plum, hypnotic purple orchid, warm vanilla, amber and musk.

**Imari Seduction**  
Eau de Toilette  
*amber floral*  
50 ml  
220-270-2

reg. 35.00

**24.99** each

**LYRD** layers redefined

**Sparkling Neroli**  
*fresh citrus*

Sparkling neroli, blended with uplifting bergamot and warm musk.

**Eau de Parfum**  
50 ml  
**223-517-4**  
reg. 52.00  
**42.00**

**Eau de Parfum**  
**Travel Spray**  
10 ml  
**223-468-9**  
reg. 26.00  
**21.99**



**Oud Rose**  
**Eau de Parfum**  
*woody floral*

An intoxicating dance of seductive oud and alluring rose.

50 ml **223-185-0**  
reg. 52.00  
**42.00**

**Eau de Parfum**  
**Travel Spray**  
10 ml  
**223-216-9**  
reg. 30.00  
**24.99**



A romantic floral that surprises and delights.

**Bouquet de Freesia**  
**Eau de Parfum**  
*soft floral*

An unexpected mix of sweet freesia, tulip and warm amber. 50 ml  
**222-611-3**  
reg. 52.00  
**42.00**



A bright floral that lets you shine.

**Honeysuckle Blossom**  
**Eau de Parfum**  
*soft floral*

Delicate apple blossom, lively honeysuckle nectar and radiant vanilla orchid. 50 ml **223-300-7**  
reg. 42.00  
**28.00**



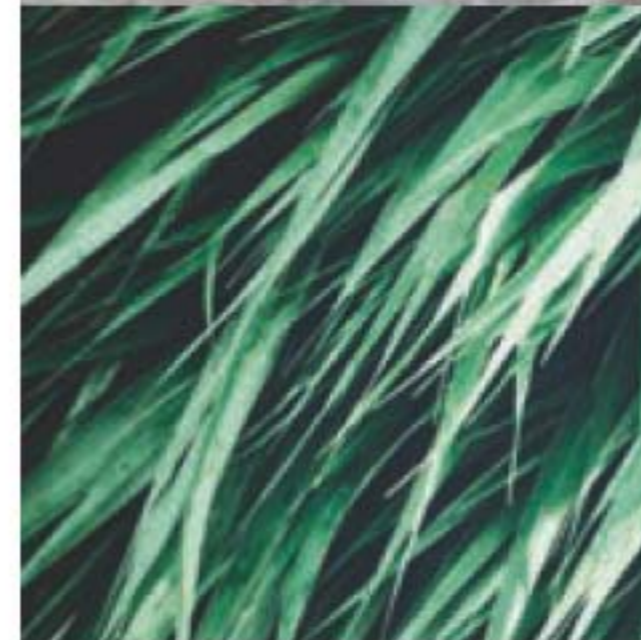
A fresh composition of watery florals.

**Peony Rosé**  
**Eau de Parfum**  
*soft floral*

Sparkling notes of dewy peony petals, pink currant, and sheer musk. 50 ml  
**223-300-5**  
reg. 42.00  
**28.00**



A world of authentic fragrances expertly crafted by master perfumers with unexpected combinations of the finest ingredients.



**LYRD Artisan**

unisex fragrances  
for him or her

**Cherry Vetiver**  
**Eau de Parfum**  
*amber floral*  
Wild cherry blends with smooth Haitian vetiver. 50 ml **221-958-8**  
**75.00**

**Santal Musk**  
**Eau de Parfum**  
*woody floral*  
Indian sandalwood mixes with magnetic white musk. 50 ml **222-376-4**  
**75.00**



**Santal Musk**  
**Eau de Parfum**  
**Travel Spray**  
10 ml  
value 30.00

**FREE**  
with every  
**Eau de Parfum 50 ml**  
purchase from page 63



## LUXURIOUS SCENTS

**Prima**  
**Eau de Parfum**  
*amber floral*  
Plum, rose and  
white patchouli.  
50 ml  
**122-508-3**  
reg. 42.00  
**28.00**



**Today**  
**Eau de Parfum**  
*soft floral*  
Joyful notes of  
hibiscus and silk  
musk. 50 ml  
**836-39**  
reg. 42.00  
**32.00**



**Prima Noir**  
**Eau de Parfum**  
*amber floral*  
Violet, jasmine  
and creamy  
vanilla noir.  
50 ml **119-733-8**  
reg. 42.00  
**28.00**



**Live Out Loud Eau de Parfum**  
*fruity floral*  
A free-spirited expression  
of sweet wild strawberry,  
sparkling mimosa and  
comforting fluffy  
vanilla. 50 ml  
**221-142-5**  
reg. 56.00  
**35.00**



## SOFT FLORAL

Fruity accents combine with woody notes in this sexy and sophisticated blend, giving it a strong personality with a touch of mystery.

### NOTES

*Top:* Watermelon,  
Ginger  
*Mid:* Jasmine, Peony  
*Base:* Sandalwood,  
Musk

**KATE**  
**Fruits & Passion**  
**Eau de Toilette**  
*soft floral*  
50 ml **222-436-2**  
**40.00**



# CLASSIC SCENTS

that are tried-and-true favourites!



Awaken your spirit.

**Free O2**  
Eau de Toilette  
*fresh green floral*  
White peach tea, airy honeysuckle and musk.  
50 ml  
222-618-9  
26.00 or...

A refreshing, outspoken blend.

**Candid**  
Cologne  
*amber floral*  
Bergamot, tuberose and patchouli.  
50 ml  
110-321-3  
26.00 or...

An enduring classic.

**Timeless**  
Cologne  
*soft floral*  
Bergamot, jasmine and patchouli.  
50 ml  
110-373-1  
26.00 or...

An enigmatic mix to heat up the night.

**Night Magic**  
Cologne  
*woody floral*  
Neroli, jasmine and musk.  
50 ml  
110-300-9  
26.00 or...

A wanderlust of spice.

**Odyssey**  
Cologne  
*soft floral*  
Muguet, ylang-ylang and warm oakmoss. 50 ml  
110-321-2  
26.00 or...

Exquisite expression.

**Topaze**  
Cologne  
*soft floral*  
Jasmine, rose and sheer musk. 50 ml  
223-321-3  
26.00 or...

A sweet moment.

**Sweet Honesty**  
Cologne  
*soft floral*  
Roses, peach and sandalwood.  
50 ml  
110-437-8  
26.00 or...

Live your dream!

**Dreamlife**  
Cologne  
*soft floral*  
Mimosa, ylang-ylang and sandalwood.  
50 ml  
224-615-4  
26.00 or...

**CHOOSE ANY 2 FOR 25.00**

**PAGES 66-67**

To get the 2 FOR price, please order in multiples of 2.

**DAILY ESSENTIALS** keep your scent going strong

## CREAMY skin softeners

Luxurious, long-lasting scents with rich emollients.

### Perfumed Skin Softener

150 ml  
Sweet Honesty 222-623-0  
Haiku 222-702-2  
Imari 222-701-8  
Far Away 222-702-0  
Timeless 222-623-1  
Odyssey 222-623-4  
Candid 222-623-3  
Night Magic 222-623-2  
reg. 12.00  
**5.99 each**



## DEODORANT sticks

All day freshness.  
Long-lasting odour  
protection.

### Deodorant Stick

Nourishing formula glides on smoothly without leaving any residue.  
28 g  
Rare Pearls 223-059-8  
Haiku 223-059-9  
Black Suede 222-670-4  
reg. 17.00  
**13.99 each**



# SCENTED HAND CREAMS

Keep hands soft, smooth  
and delicately scented.



FRAGRANCE

**NEW**

### Hand Cream

Richly moisturizing formula infused with jojoba seed oil and vitamin E. Leaves skin lightly scented.

75 ml

Sweet Honesty 224-092-1

Timeless 224-092-0

Night Magic 224-092-2

reg. 9.00

**5.99 each**



Freshen up your car interior for a relaxing drive.

# ENJOY THE RIDE

To diffuse oil place a drop of oil onto the wood bead



**NEW**

Fill with your favourite Avon Pure Essential Oil and hit the road!

❖ **Avon Pure Essential Oil Car Diffuser**  
Scent and beautify your car interior. Glass/wood/polyester. 2.5 x 2.5 x 8 cm (excluding hanging cord). **225-954-6**  
reg. 14.00  
**10.00**  
limited quantities

AVON PURE ESSENTIAL OILS singles and blends

MADE IN CANADA

WELLNESS

# BOOST YOUR WELLNESS

with the rich properties of botanical essence.

❖ **Essential Oils**  
Add a few drops to a diffuser to experience the benefits.  
• Paraben/gluten/phthalate/sulfate-free  
• Vegan  
10 ml

**Rosemary**  
Energize your space with rosemary.  
**223-206-5**  
reg. 24.00  
**21.00**



**Zen**  
Create a sense of tranquility with lavender, peppermint and chamomile.  
**223-203-1**  
reg. 27.00  
**24.00**



**Cinnamon**  
Uplifting scent of warm, spicy cinnamon.  
**225-675-1**  
reg. 24.00  
**21.00**



**Grapefruit**  
Brighten up your day with grapefruit.  
**223-206-3**  
reg. 24.00  
**21.00**



**Peppermint**  
Stimulate and refresh your space with peppermint.  
**223-203-0**  
reg. 23.00  
**19.00**



**Eucalyptus**  
Refresh the mind with eucalyptus.  
**223-204-1**  
reg. 20.00  
**18.00**



**Happiness**  
Infuse the air with joy. Blend of grapefruit, lemon and sweet orange.  
**223-203-2**  
reg. 19.00  
**17.00**



**Tea Tree**  
Refresh and purify your surroundings with tea tree.  
**224-919-6**  
reg. 24.00  
**21.00**



**Lavender**  
Calm and soothe with lavender.  
**223-202-9**  
reg. 24.00  
**21.00**



# ESSENTIAL OIL SPRAYS

Enjoy the benefits of premium quality essential oils.

❖ **De-Stress Relaxing Mists**

Made from a blend of lavender, sweet fennel, peppermint and Roman chamomile essential oils. 115 ml **224-101-5** reg. 29.00 **24.00**

❖ **Lavender Pillow Spray**

Shake well before use. Vegan. Not tested on animals. Petroleum/chlorine bleach/ammonia/phosphate-free. 115 ml **223-208-1** reg. 27.00 **22.00**



❖ **Bathroom Bestie Spray**

When sprayed inside the bowl, the scent creates a film over water, trapping bad smells inside. Vegan. Not tested on animals. Petroleum/chlorine bleach/ammonia/phosphate-free. Spray 3-5 times into the toilet bowl before you go. 115 ml **223-207-6** reg. 26.00 **21.00**

❖ **Keep Your Cool Cooling Mist**

Clary sage, known for its relaxing qualities, plus the cooling combination of peppermint and menthol, provide fast cooling relief to skin. Spray 2-3 times on the back of your neck, 1-3 times per day. 115 ml **223-207-9** reg. 24.00 **20.00**

❖ **Auto Spa Spray**

Get rid of funky car smells. Not tested on animals. Petroleum/chlorine bleach/ammonia/phosphate-free. Non-toxic. Spray onto fabric car seats, floor mats, carpets or trunk space. 115 ml **223-208-0** reg. 24.00 **19.00**



Paraben/gluten/phthalate/sulfate-free. Vegan.



❖ **Energize**

Wakes you up from that mid-day slump. With sweet almond oil, grapefruit peel oil, sweet orange peel oil and rosemary leaf extract. 10 ml **223-204-2** reg. 24.00 **21.00**



❖ **De-Stress**

Like yoga in a bottle... it helps calm you. With sweet almond oil, lavender and peppermint. 10 ml **223-204-8** reg. 24.00 **21.00**



❖ **Focus**

Helps boost alertness and concentration. With sweet almond oil, lemon peel oil and rosemary leaf extract. 10 ml **223-206-1** reg. 24.00 **21.00**



❖ **Detox**

Awakens your senses with a blend of sweet almond, juniper berry, lemon, peppermint, sweet fennel, rosemary and sandalwood. 10 ml **221-631-8** reg. 24.00 **21.00**



❖ **Bodyguard**

Gives you a boost with an all-natural, powerful blend of sweet almond, clove, lemon, cinnamon, eucalyptus and rosemary. 10 ml **221-704-5** reg. 24.00 **21.00**



# PERFECT SLEEP REGIMEN

❖ **Avon Pure Sleep Stones®**  
 Place stones in a bowl by your bedside. Shake stones to activate the oils. Cover bowl when not in use to prolong aroma.  
 175 g **225-138-1**  
 reg. 20.00  
**16.00**



**re:tune Restful Sleep**  
 Naturally-sourced non-habit-forming supplement helps reduce the time it takes to fall asleep. With magnesium, hops, chamomile and melatonin. 60 vegetarian capsules.  
**223-087-0**  
 reg. 19.00  
**14.99**



❖ **Avon Pure Essential Oils Sweet Dreams**  
 Create a serene environment with lavender and chamomile. Paraben/gluten/phtalate/sulfate-free. Vegan. 10 ml  
**223-203-6**  
 reg. 27.00  
**24.00**

Add a few drops to a diffuser to experience the benefits



# DEEP RESTFUL SLEEP

Elevate your beauty rest with this luxurious weighted eye mask.

**NEW**

❖ **Weighted Eye Mask**  
 One size fits most.  
 Body/Sponge: cotton/polyester.  
 Band: polyester/spandex.  
 Interior: natural rubber yarn/nylon.  
 Hand wash, lay flat to dry.  
 22 x 9 cm  
**226-025-9**  
 reg. 30.00  
**19.99**

Weighted stimulation is known to help reduce stress and promote relaxation

Applies even pressure on and around the eyes with a soft comfortable feel



# DOUBLE UP & SAVE!

Take your skin care to the next level

Double up on your favourite skin care or try something new. See amazing results with our skin care line up.

Shop pages 77-89

## COMBAT MULTIPLE SIGNS OF AGING

Indulge in your best you yet with this most luxurious night crème.

**Anew Ultimate Supreme Advanced Performance Crème**  
Wake up to visibly softer and smoother skin. Use PM after cleansing. 50 g  
112-399-3  
84.00 or...

3X more powerful together than an oil or serum alone.

**Anew Ultimate Supreme Dual Elixir**  
Two innovative formulas, a unique serum and a luxurious blend of precious oils. Use after cleansing. Serum/oil, 20 ml each. 222-400-7  
84.00 or...

Ultra-moisturizing formula helps support skin's moisture barrier.

**Anew Ultimate Supreme Eye Balm**  
Eye serum infused with nourishing squalane, sunflower seed oil and antioxidant vitamin E. Ultra-moisturizing formula helps support the skin's moisture barrier so skin around eye area looks smoother. Wear alone or under makeup. 2.9 g 224-621-8  
63.00 or...



ANY 2 FOR  
**78.00**

MIX & MATCH  
PAGES 76-77

To get the 2 FOR price, order in multiples of 2.

# ANEW ULTIMATE & PLATINUM

From youth-boosters that target fine lines and wrinkles to power lifters that resculpt and lift your look from every angle.

Visibly lifts and firms the look of the your jawline.

**Anew Platinum Day Cream Broad Spectrum Sunscreen SPF 25**  
Helps restore the look of youthful skin. 50 g **223-642-3 59.00 or...**

95% of women showed a visibly re-contoured neck area\*

**Anew Platinum Firm and Sculpt Cream for Neck and Chest**  
Use PM after cleansing. 50 g **116-652-7 59.00 or...**  
\*Based on a clinical study.

Skin looks visibly firmer with fewer wrinkles and appears more luminous than ever before.

**Anew Ultimate Multi-Performance Day Cream Broad Spectrum SPF 25**  
50 g **223-650-7 59.00 or...**

Open your eyes to a smoother and firmer look with this 2-in-1 treatment.

**Anew Ultimate Multi-Performance Eye System**  
Visibly smooths the look of crow's-feet and de-puffs under eyes. Cream, 15 g; elixir, 2.5 g **122-538-2 59.00 or...**



**ANY 2 FOR  
52.00**  
**MIX & MATCH  
PAGES 78-79**  
To get the 2 FOR price,  
order in multiples of 2.



# FARM RX

## A VEGAN SKIN CARE COLLECTION

Visibly reduces the look of fine lines and wrinkles.

Helps reduce the appearance of fine lines, wrinkles and pores.

### Pineapple Plus Brightening Jelly Serum

Contains pineapple extract, watermelon, papaya, fermented pomegranate, tomato and lemon extracts. 30 ml **224-938-1**  
**62.00 or...**

Helps soothe, cool and hydrate skin.

### Super Greens Cooling Gel

Use as a lightweight moisturizer to help soothe and cool skin, or apply thicker, after serum, as a mask to hydrate overnight as needed. 90 ml **223-642-5**  
**53.00 or...**



Locks in essential nourishing moisture.

### Super Greens Multivitamin Moisture Cream

Use daily after cleansing, serums and treatments. 90 ml **223-642-6**  
**53.00 or...**

Target the appearance of fine lines, wrinkles and dullness without irritation.

### Bakuchiol Serum

Concentrated lightweight oil-textured formula penetrates the skin's surface. 30 ml **223-643-7**  
**63.00 or...**

For a smoother, brighter and firmer look.

### Bakuchiol Eye Cream

Hydrating and revitalizing formula reduces the look of dark circles, fine lines and wrinkles, without irritating the delicate eye area. 30 ml **223-643-8**  
**53.00 or...**

Improves the appearance of skin texture for a more youthful look.

### Bakuchiol Cream

Formulated with a blend of botanical extracts to visibly reduce the look of wrinkles. Hypoallergenic, dermatologist-tested and suitable for sensitive skin. 90 ml **224-113-1**  
**63.00 or...**



ANY 2 FOR  
**58.00**

MIX & MATCH  
PAGES 80-85

To get the 2 FOR price,  
order in multiples of 2.



# TARGET SPECIFIC CONCERNS

Power up your skin care regimen with serums.

Refines texture and visibly improves the look of skin tone.

**Anew Vitamin C Brightening Serum**

Skin looks visibly energized and brightened with the power of 10% pure vitamin C. Use AM and PM. Noncomedogenic. 30 ml **220-694-4 62.00 or...**

Our highest concentration of hyaluronic acid for visibly plumper, bouncier skin.

**Anew Hydra Fusion 1.5% Hyaluronic Acid Serum**

Three molecular sizes of hyaluronic acid penetrate surface layers for visibly plumper, bouncier skin and overall deep hydration. 30 ml **222-488-8 62.00 or...**

With AHAs to reveal the look of a smoother, brighter complexion.

**Isa Knox Anew Clinical Revitalize & Reveal Resurfacing Expert Smoothing Fluid**

79% as effective as a pro micro-dermabrasion without the same irritation. 30 ml **223-188-4 62.00 or...**



Get lush lashes that are all yours!

**Anew Clinical Unlimited Lashes Lash & Brow Activating Serum\***

84% of women agreed lashes look longer and fuller after 8 weeks of use.\*\* Use PM. 3 ml **220-342-0 84.00 or...**

\*Anew Clinical Unlimited Lashes is not intended to reverse or reduce hair loss or grow hair. \*\*Based on an 8-week consumer-perception study.

Vegan and paraben-free skin care.

**Hemp Seed Facial Oil**  
Lightweight. Suitable for sensitive skin. Non-comedogenic and hypallergenic. Use AM and PM, after cleansing and moisturizing. 30 ml **222-913-9 50.00 or...**

Multi-use facial oil helps to hydrate while creating a protective barrier.

**The Face Shop Mango Seed Advanced Radiant Moisturizing Oil**

Suitable for dry skin. Use AM and PM. Lightweight. Apply 1 to 2 drops, tap lightly to promote absorption. Formulated without 6 parabens\*\*\*. 40 ml **224-126-9 38.00 or...**

\*\*\*6 Parabens (Methyl; Ethyl; Propyl; Isopropyl; Butyl, Isobutylparaben).



ANY 2 FOR **58.00**

MIX & MATCH PAGES 80-85

To get the 2 FOR price, order in multiples of 2.



# TARGET SPECIFIC CONCERNS

See amazing results with powerful serums, that visibly minimizes multiple signs of aging.

Enhance the benefits of your moisturizers with powerful results!

**Anew Power Serum**  
93% of women agree it dramatically improves skin's overall appearance.\* Apply AM and PM after cleansing, before moisturizing. 30 ml **106-273-6**  
**63.00 or...**

Targets cheeks, chin, jawline and jowl.

**Anew Clinical Infinite Lift Targeted Contouring Serum**  
Formulated with Polypeptide Lift Complex that helps to firm and lift the look of facial skin for a younger, natural look. 30 ml **442-280**  
**63.00 or...**

\*Based on those who expressed an opinion in a consumer-perception study.

Visibly smooth away overall fine lines and wrinkles.

**Isa Knox Anew Clinical Line Eraser with Retinol Treatment**  
100% of women showed improvement in the look of fine lines and wrinkles.\* Use AM and PM. 30 g **223-262-3**  
**63.00 or...**



In one week, even deep wrinkles start to show improvement.

**Isa Knox Anew Clinical Line Eraser with Retinol Targeted Treatment**  
In just one week, the look of deep lines are smoothed and resurfaced. Use PM.\* 20 ml **223-262-8**  
**56.00 or...**

A fast penetrating serum that visibly minimizes multiple signs of aging.

**Anew Platinum Age Delay Serum**  
With an innovative antioxidant technology containing niacinamide (vitamin B3) and panthenol (pro-vitamin B5) plus peptides. Use AM and PM before moisturizer. 30 ml **224-622-0**  
**63.00 or...**

Overnight, the appearance of skin is smoother, firmer brighter.

**Anew Ultimate Repair Night Serum**  
Advanced restorative formula diminishes the appearance of fine lines and visibly improves skin tone and texture. Use PM before moisturizer. 30 ml **224-621-9**  
**63.00 or...**



ANY 2 FOR  
**58.00**

MIX & MATCH  
PAGES 80-85

To get the 2 FOR price, order in multiples of 2.



# TARGET SPECIFIC CONCERNS

With boosting moisturizers, serums and skin correctors.

Visibly plumps the look of skin.

**Anew Hydra Fusion Nighttime Facial Treatment**

Increases moisture by 3X. Relaxing rose scent. 50 g  
222-488-9  
48.00 or...

Provides 72 hours of long-lasting hydration.

**Anew Hydra Fusion Gel Cream**

The water-like gel absorbs instantly making skin appear smoother, refreshed and plumped with hydration. 50 g  
220-387-9  
48.00 or...

Visibly reduces redness due to dryness.

**Isa Knox Anew Clinical Booster Microbiome Balance**

With a blend of prebiotics, postbiotics, and probiotic extract. 30 ml  
223-425-1  
56.00 or..

Provides long-lasting hydration.

**Isa Knox Anew Clinical Booster Moisture Lock**

With NMF (natural moisturizing factor), HA (hyaluronic acid) and ceramides. 30 ml  
223-425-2  
56.00 or...



Reduces the appearance of pores.

**Isa Knox Anew Clinical Booster Pore Perfector**

Visibly reduces the appearance of pores and blemishes in 15 minutes. 30 ml  
223-425-0  
56.00 or...

Suitable for sensitive skin.

**Anew Skinvincible Day Lotion Broad Spectrum SPF 50**

With our highest SPF available. Targets dehydrated skin and wrinkles. Use AM. 30 g  
223-650-8  
56.00 or...

Minimizes the appearance of sun spots, fine lines and post-acne marks.

**Isa Knox Anew Clinical Revitalize & Reveal Extra Strength Retexturizing Peel**

Results similar to a 35% pro glycolic peel.\* 30 fragrance-free pads. 223-188-5  
56.00 or...

Smooths the appearance of fine lines and wrinkles.

**Isa Knox Anew Clinical Revitalize & Reveal Advanced Wrinkle Corrector**

In just two weeks, wrinkles appear reduced. 50 ml  
223-262-0  
56.00 or..

\*In 6 of 8 attributes tested over a 7-week period.



ANY 2 FOR  
**48.00**

MIX & MATCH  
PAGES 86-89

To get the 2 FOR price,  
order in multiples of 2.



# TARGET SPECIFIC CONCERNS

With our age-defying skin care for face and body.

Visibly reduces the appearance of under eye circles.

**Anew Vitamin C Brightening Eye Cream**

Leaves under-eye area looking brighter and more even-toned. 15 ml **221-940-3** **48.00** or...

Reduces the look of dark spots, helps even out the look of skin tone and enhance radiance.

**Anew Vitamin C Overnight Radiant Mask**

With vitamins C and E, powerful antioxidants that visibly improve skin texture and boost radiance. Leave on overnight. 50 ml **222-985-5** **50.00** or...

Brightens skin's appearance and creates a smooth canvas to extend makeup wear.

**Anew Vitamin C Illuminating Priming Moisturizer**

Instantly illuminates and hydrates your complexion for a healthy, radiant look. Wear alone or under makeup. 50 ml **221-940-4** **48.00** or...

Lightweight, non-greasy body oil.

**Anew Vitamin C Dry Body Oil**

Nourishing plant-based dry body oil with antioxidant vitamins C and E quickly melts into skin to instantly hydrate and visibly brighten skin. 100 ml **222-985-3** **48.00** or...

Light-reflecting pigments leave skin looking luminous all over.

**Anew Vitamin C Illuminating Body Serum**

With antioxidant vitamins C and E to visibly improve skin texture and boost radiance. Soothing sunflower seed oil and panthenol (vitamin B5) help skin retain essential moisture. 200 ml **222-985-4** **48.00** or...

Alpha hydroxy formula for your body.

**Isa Knox Anew Clinical Revitalize & Reveal Resurfacing Lotion for Body**

Advanced, luxurious formula, powered by lactic acid, boosts skin's natural exfoliation process and moisturizes with shea butter to help visibly smooth rough, bumpy and crepey skin. As a result, skin feels softer and looks more radiant. 150 ml **223-261-2** **48.00** or...

Berry goodness for your body.

**FarmRX Amazon Berry Boost Smoothing & Firming Body Cream**

With moisturizing and nourishing Brazil nut oil plus murumuru and capuacu butters. 150 ml **224-946-0** **35.00** or...



**ANY 2 FOR 48.00**

**MIX & MATCH PAGES 86-89**

To get the 2 FOR price, order in multiples of 2.



# MISSION LUXEREVE

Reveal the remarkable youthful look you've always dreamed of.



### Cream

Enriched with luxurious oils and other moisturizing ingredients, this indulgent cream helps skin look smoother, firmer and radiantly healthy, for a more youthful, sculpted appearance. Use after Mission Luxereve Serum.

50 g **222-577-0**  
reg. 400.00  
**330.00**

### Serum

A deluxe rejuvenating serum formulated to help boost skin elasticity and firmness for the smoothest, most youthful-looking skin ever. Use after cleansing and before moisturizing with Mission Luxereve Cream.

30 ml **222-577-1**  
reg. 260.00  
**220.00**

### Eye Cream Set

Helps visibly restore firmness and elasticity around the eyes. Includes:

- **Eye Cream** 15 ml
- **Rose Quartz Eye Massagers**  
Set of natural massagers soothes and cools eye area, and helps relieve fatigue for a refreshed look. Ergonomic design lets you massage both eye areas at once. 3.5 x 3.75 cm

**222-909-8**  
reg. 255.00  
**205.00** the set



Formulated with special fermentation technologies derived from natural ingredients. Enhances the look of elasticity and firmness with an ultra-light feel!



**TRY IT!**  
**NEW LOTION**  
coming in  
Brochure 6!

## NEW

### Mission Luxereve Regimen Trial Kit

Deluxe skin care collection includes try-it size of new lotion, coming in in Brochure 6, plus favourite mini sizes.

**225-532-6**  
reg. 50.00  
**42.00** the kit

Includes:

- **Try-it size Serum**  
Helps boost skin elasticity and firmness. Use AM and PM, after Mission Luxereve Essence and before moisturizing with Mission Luxereve Cream or NEW Lotion. 7 ml
- **NEW! Try-it size Lotion**  
Helps visibly improve tone and texture and improve the look of elasticity and firmness. 20 ml
- **Try-it size Foaming Wash**  
Removes pore-clogging impurities while leaving skin feeling clean, moisturized and refreshed. 15 ml
- **Try-it size Cream**  
Helps skin look smoother, firmer, more youthful. Use AM and PM, after Mission Luxereve Serum. In AM, follow with sunscreen. 5 g

skin-nourishing  
**ANTI-AGING**  
care for  
skin and lips

**Lip Balm**

Luxurious paeonol-infused tinted lip balm provides long-lasting hydration. Wear alone or over lipstick. 3.4 g  
Red **224-497-1**  
Pink **224-497-0**  
reg. 35.00  
**29.99** each



**Day Cream**

This multi-purpose paeonol-infused day cream visibly reduces the appearance of wrinkles and improves the appearance of elasticity, radiance and skin texture. With nutmeg to help visibly even skin tone, and soothe skin.  
50 ml **224-488-6**  
reg. 70.00  
**56.00**



**Dual Night Cream**

Two-step cream infused with paeonol and macadamia oil. Volume Cream (pink) with rice bran extract to help visibly plump the appearance of skin. Firming Cream (white) with peptides.  
Each, 25 ml  
**224-488-5**  
reg. 70.00  
**56.00**



**Eye Serum**

Infused with paeonol and ceramides to help visibly reduce the appearance of fine lines around the eye area, diminish dark circles and depuff bags. 30 ml  
**224-488-8**  
reg. 70.00  
**56.00**



**Serum**

The luxurious serum, infused with paeonol and ceramides, visibly improves the appearance of elasticity, skin texture and radiance, and reduces the appearance of fine lines and wrinkles. 40 ml  
**224-488-7**  
reg. 80.00  
**64.00**



**NEW**

**Day Cream Broad Spectrum SPF 30**

Deeply moisturizing formula, with firming hibiscus extract and a blend of anti-aging ingredients, including cica and panthenol. 50 ml  
**224-731-3**  
reg. 70.00  
**56.00**



**Oil Serum**

Hibiscus extract-infused serum, peptides and rejuvenating antioxidants, helps visibly smooth wrinkles and tighten facial contours for a firmer, smoother, more lifted look. 40 ml  
**223-197-7**  
reg. 80.00  
**64.00**



**Day Cream**

Deeply moisturizing hibiscus extract-infused formula with smoothing ceramide, visibly tightens facial contours and reduces the appearance of wrinkles for a firmer, smoother, more sculpted look. 50 ml  
**223-197-6**  
reg. 70.00  
**56.00**



**Night Cream**

Infused with firming hibiscus extract, ceramide, squalane and shea butter, it visibly tightens facial contours and reduces the appearance of wrinkles for a firmer, smoother, more defined look. 50 ml  
**223-197-5**  
reg. 70.00  
**56.00**



**Eye Cream**

Hibiscus extract-infused formula with hydrating panthenol and revitalizing antioxidants leaves the delicate eye area looking firmer, brighter, more defined. 25 ml  
**223-197-8**  
reg. 70.00  
**56.00**



**Neck and Chest Cream**

A blend of anti-aging ingredients including ceramide, shea butter, panthenol and squalane so vulnerable skin along neck and chest appears firmer, smoother and lifted. 50 ml  
**224-106-2**  
reg. 70.00  
**56.00**



# BEAUTY REGIMENS

Includes three full size moisturizers plus one try-it size serum.

## Ultimate Regimen Set

Includes three full size moisturizers plus one try-it size serum.

- **Multi-Performance Day Cream Broad Spectrum SPF 25** 50 g
- **Multi-Performance Night Cream** 50 g
- **Multi-Performance Eye System Cream**, 15 g, elixir, 2.5 g
- **Power Serum** 7 ml

224-069-3  
reg. 158.00

**79.99** 4-piece boxed set



\$158  
VALUE

## Platinum Regimen Set

Includes three full size moisturizers plus one try-it size serum.

- **Day Cream Broad Spectrum Sunscreen SPF 25** 50 g
- **Night Cream** 50 g
- **Eye & Lip Cream** Dual applicator. 15 g
- **Power Serum** 7 ml

224-069-2  
reg. 158.00

**79.99**  
4-piece boxed set

## ISA KNOX LXNEW TRIAL KITS



5-piece  
trial kit

## Ultimate Trial Kit

Includes:

- **Rejuvenating Eye Serum** 5 ml
- **Rejuvenating Day Cream** 15 ml
- **Rejuvenating Dual Night Cream** (Firming 5 ml and Volumizing 5 ml)
- **Rejuvenating Serum** 7 ml

225-780-4  
reg. 46.00

**37.00** 5-piece trial kit

## Platinum Special Trial Kit

Includes:

- **Sculpting Day Cream** 15 ml
- **Sculpting Night Cream** 15 ml
- **Sculpting Eye Cream** 5 ml
- **Sculpting Oil Serum** 7 ml

223-652-0  
reg. 46.00

**37.00** 4-piece kit

4-piece  
trial kit



3-piece  
trial kit

## Platinum Sculpting Kit

Includes:

- **Sculpting Neck and Chest Cream** 15 ml
- **Sculpting Day Cream** 15 ml
- **Sculpting Oil Serum** 7 ml

224-706-7  
reg. 40.00

**32.00** the 3-piece set





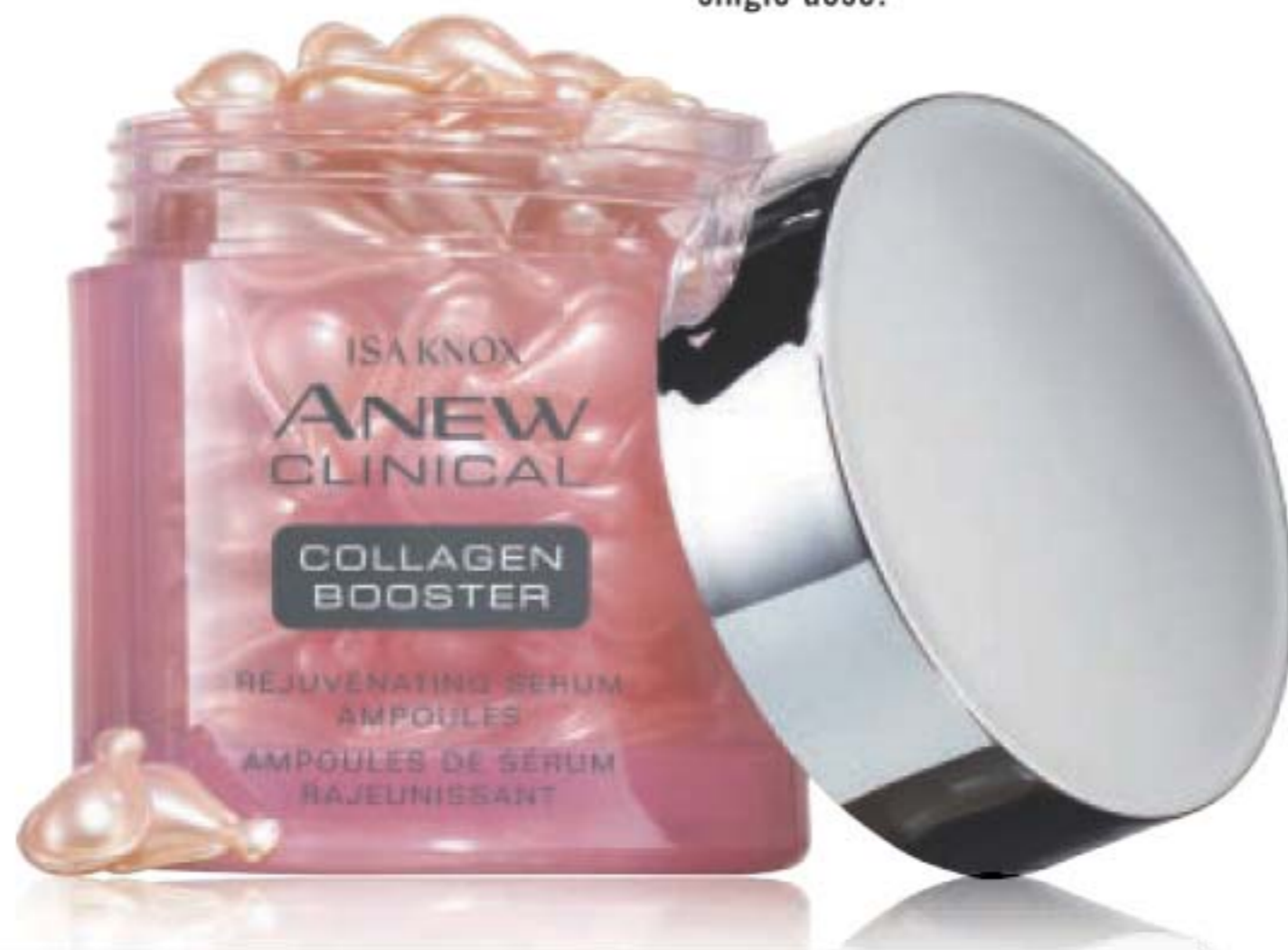
# YOUTH ENHANCING COLLAGEN SERUM

Clinical results show in 2 weeks:  
Wrinkles are significantly diminished.  
Skin looks firmer, more elastic.\*

Each ampoule is a  
pre-measured  
single dose!

### Anew Clinical Collagen Booster™ Rejuvenating Serum Ampoules

With a powerful peptide blend. Hypoallergenic and clinically- and dermatologist-tested. Use 1 ampoule each AM and PM. Smooth gently over cleansed skin in an upward and outward motion. 60 ampoules, 0.22 ml each. **221-391-4**  
reg. 88.00  
**69.99**



\*Based on a clinical study.



# OUR MOST ADVANCED WRINKLE FIGHTER EVER!



Visibly refreshes  
skin's texture  
for a smoother,  
brighter look



**NEW**

See dramatic results with our highest dose of retinol (1%), the #1 wrinkle-fighting ingredient recommended by dermatologists.

**Isa Knox Anew Clinical Line Eraser with Retinol [1.0%] Advanced Retinol Serum**  
High-performance serum dramatically reduces the appearance of fine lines, wrinkles and dark spots. 30 ml  
**223-424-8**  
reg. 72.00  
**55.99**

# DISCOVER the benefits Dr. Belmeur



## GET

- 2 Cica Peptide Ampoule Samples
- 2 Cica Recovery Cream Samples

**FREE**  
WITH EVERY  
PURCHASE FROM  
PAGE 98-99

In case of unforeseen demand, Avon reserves the right to replace a product with that of equal or greater value.

## DR. BELMEUR

**Dr. Belmeur  
Skin-Sync Rx™**  
with  
plant-based,  
skin-friendly  
ingredients.

### Clarifying Facial Moisturizer

Soothes and moisturizes skin. Dermatologically-tested. Suitable for sensitive skin. Use after cleansing. 120 ml

**224-998-0**  
reg. 34.00  
**27.00**



### Derma Collagen Eye Patches

Collagen infused gel eye patches help to hydrate and smooth the look of fine lines and wrinkles. 2 single-use patches.

**225-067-2**  
reg. 9.00  
**7.00**



### Derma Collagen Neck Patch

With 7-Peptide Complex to help visibly firm the skin on the neck for a more youthful appearance. 1 single-use patch.

**225-067-0**  
reg. 9.00  
**7.00**



### Advanced Cica Eye Cream

With ceramide and pro-vitamin B5 to lock in and enhance moisture. Hypoallergenic. 25 ml

**224-113-4**  
reg. 65.00  
**52.00**



### Cica Recovery Cream

Strengthening ceramide helps restore the moisture barrier. Dermatologically-tested. Suitable for sensitive skin.

50 ml **221-900-9**  
reg. 60.00  
**48.00**



# REVITALIZE & FIRM



Developed to address tired-looking skin, this quick-absorbing ampoule **helps to energize, smooth and firm skin.**

### ★ The Face Shop Dr. Belmeur Cica Peptide Ampoule

For skin that needs firming. A concentrated blend of cica and peptides. Dermatologically-tested. Suitable for sensitive skin. Use after cleansing and before moisturizing with Cica Recovery Cream. 45 ml **221-966-1**  
**65.00 or...**

**ONLY  
29.99**

**WITH EVERY PURCHASE  
FROM THIS BROCHURE**

(excluding Cica Peptide Ampoule)

# DITCH THE DRIPS CUFFS

Slip them onto your wrists to prevent water from dripping down your arms during your skin care routine



SET OF 2

## Non-Drip Cuffs

One size fits most. Machine wash and dry. Polyester. 10 x 6 cm **225-747-9**  
**16.00 the set or...**

**ONLY 8.99** THE SET

WITH EVERY PURCHASE FROM THIS BROCHURE

(excluding Cuffs)  
limited quantities



# CHOOSE THE RIGHT CLEANSER

shop facial cleaners pages 101-113

**Cleanse with a burst of hydration!**  
This jelly-to-foam cleanser creates an explosive burst of hydration.



Jelly to foam cleanser

97% of women felt it was gentle while cleansing\*

With LADY'S MANTLE an herb known for its antioxidant benefits.

## belif aqua bomb jelly cleanser

For dryness, dullness and uneven texture. Amino acids and glycerin-based cleansing agents gently remove makeup without stripping skin of moisture. 160 ml **222-316-8**  
**37.00**

\*Based on a consumer-perception study.

# CHOOSE THE RIGHT CLEANSER

Innovative customized cleansers with skin-nourishing ingredients formulated for your skin type. **Free from parabens, synthetic fragrances, dyes and mineral oil.**



# REFRESH & RESTORE MOISTURE

SKIN CARE



**Isa Knox LXNEW Clean Nourishing Cream Cleanser**  
Luxurious cream cleanser infused with panthenol (vitamin B5) and soothing rosemary and soapwort extracts. 150 ml **222-986-2** reg. 18.00

**Isa Knox LXNEW Clean Balancing Gel Cleanser**  
Invigorating gel-to-foam cleanser with moisturizing panthenol (vitamin B5) rebalances the skin. Mild amino acid-based ingredients derived from coconut. 150 ml **222-986-6** reg. 18.00

**LIMITED  
TIME  
OFFER  
12.99 EACH**

**CHOOSE  
THE RIGHT  
CLEANSER**

# RICE WATER CLEANSING

Rice water, the milky white water obtained from rinsing rice, is **enriched with vitamins A, B and E, ceramide and minerals** to help skin feel moisturized and look radiant.



Remove  
makeup while  
moisturizing

50 wipes



Large 500 ml  
no rinse  
cleansing water



Large 300 ml  
foaming cleanser



Large 300 ml  
exfoliating cleanser

**The Face Shop Rice Water Cleansing Facial Wipes**  
Easily removes face or eye makeup on the go! With rice extract to moisturize while cleansing. 50 wipes. **221-900-8 16.00 or...**

**The Face Shop Rice Water Bright Mild Cleansing Water**  
Removes makeup and impurities with micelles, so no need to rinse off! Tired-looking, dull skin appears radiant and revitalized. Suitable for sensitive skin. 500 ml **224-135-7 20.00 or...**

**The Face Shop Rice Water Bright Foaming Cleanser**  
Cleanses and moisturizes in one. Lathers up into a creamy foam. With rice water and soapwort extract that leave skin looking clear and bright. 300 ml **221-900-0 19.00 or...**

**The Face Shop Rice Water Bright Rice Bran Gentle Exfoliating Cleanser**  
Daily scrub with organic rice bran powder, bran oil and hydrated silica. 300 ml **223-093-3 23.00 or...**

**ANY 2 FOR  
24.00**  
**MIX & MATCH  
PAGES 104-105**  
To get the 2 FOR price,  
order in multiples of 2.

# CHOOSE THE RIGHT CLEANSER

**Harness the skin-soothing power of aloe.** Gentle gel-to-foam formula hydrates as it cleanses. With soothing aloe, moisturizing panthenol and other refreshing herbal extracts.



Gel to foam cleanser

## The Face Shop Jeju Aloe Fresh Soothing Foam Cleanser

With aloe, panthenol, and other refreshing herbal extracts such as cica, camellia leaf, licorice root and rosemary. 150 ml  
**224-113-3**  
 reg. 11.99

**LIMITED TIME OFFER 8.99**



# CLEAN BEAUTY VEGAN CLEANSERS

## Farm RX Super Greens Nourishing Cleansing Balm

87% natural, clean beauty formula helps protect skin's moisture barrier as it dissolves makeup and impurities. Jar and spatula made of 50% post-consumer recycled material. 100 ml  
**223-198-1**  
 reg. 58.00  
**45.99**

## Farm RX Super Greens Refreshing Gel Cleanser Refill

Made of 30% post-consumer recycled material. 500 ml  
**224-113-0**  
 reg. 53.00  
**39.99**

## Farm RX Super Greens Refreshing Gel Cleanser

With natural nourishing ingredients to cleanse skin, remove dirt and makeup, and keep skin looking healthy. 240 ml  
**224-108-4**  
 reg. 37.00  
**27.99**

Gel cleanser infused with soothing aloe for clean, healthy skin in an eco-friendly glass bottle



Pouch refills your bottle twice

Cleansing Balm with richly moisturizing avocado and marula oils

## CHOOSE THE RIGHT CLEANSER

An at-home alternative to microdermabrasion and microneedling procedures.



## EXFOLIATE AFTER CLEANSING



97% agreed it makes your skin feel dramatically smoother after just 1 week of use.\*

Skin looks instantly smoother, younger, more radiant.

### Isa Knox Anew Clinical Collagen Booster Microneedling Polisher

A highly effective combination of gentle exfoliators polishes away dull skin cells, diminishes the look of fine lines and wrinkles, and improves the appearance of pores. Vegan formula. 50 ml  
221-459-9  
reg. 48.00

**LIMITED  
TIME OFFER  
19.99**

\*Based on a consumer-perception study.

# CHOOSE THE RIGHT CLEANSING TOOL

Need a little extra help with skin cleansing? These spa-quality tools will power up your skin care routine.

## Exfoliating Mitt

Removes impurities and gives your face an invigorating cleanse. Massage in circular motions to cleanse and exfoliate the skin. One size fits most. Cotton/olefin/polyester/other fibres. Rinse and hang to dry. 12 x 21 cm  
**225-119-6**  
 reg. 18.00  
**14.99**  
 limited quantities



Vibrating cleansing brush cleanses 5X better\*



SET OF 2



\*Vs. cleansing by hand. Based on a clinical study with an ordinary cleanser.

❖ **Anew Clean Cleansing Brush**  
 Includes one brush head. Requires 2 AA batteries (not included). 17 cm L x 5 cm W. Plastic with nylon bristles.  
**223-158-8**  
 reg. 58.00  
**44.99**

**Anew Clean Cleansing Brush Refills**  
 Contains 2 brush heads. Plastic with nylon bristles. Replace heads every 3 months. 5 cm diam. **223-158-9**  
 reg. 24.00  
**19.99** set of 2

❖ **Pore Cleansing System**  
 Includes 4 suction heads, 12 sponge filters and 6 gel rings. Features an ergonomic handle for comfort and ease. Gently glide over face, using only on T-zone areas (forehead, nose and chin). Requires 2 AA batteries (not included). ABS/polystyrene.  
**223-539-2**  
 reg. 49.99  
**34.99** the set  
 limited quantities

20+ PIECES to help keep your skin clear



**Collagen-Infused Makeup Remover Cloths - Set of 2**  
 Ultra-soft large-sized washcloths are ideal for sensitive skin. Eco-friendly. Polyester. Machine wash and dry. 39 x 19 cm **225-554-5**  
 reg. 26.00  
**19.99** the set  
 limited quantities

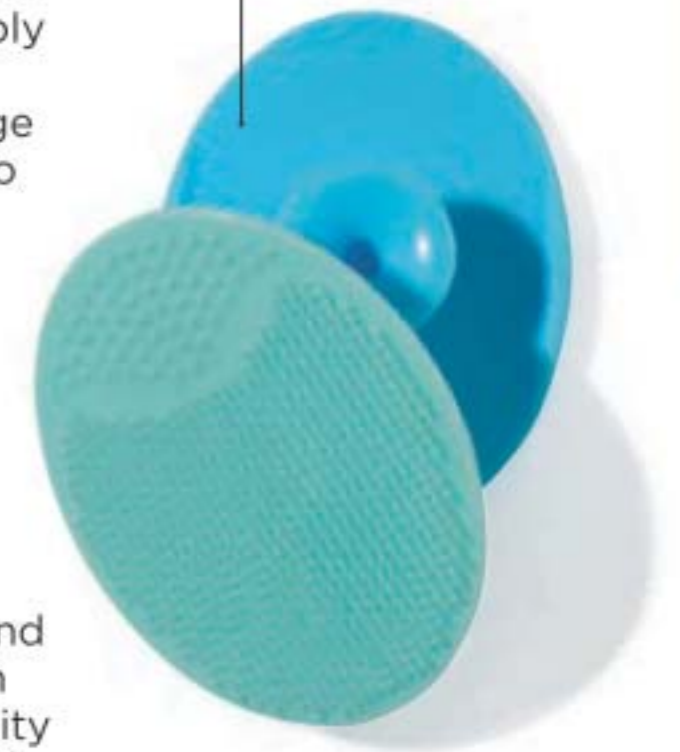
**Hanging Facial Brush**  
 Apply cleanser to face, then gently massage the skin with brush in circular motions. Includes rope to hang. ABS/PBT/polypropylene. 15 cm L x 4 cm W. **224-756-9**  
 reg. 15.00  
**9.99**  
 limited quantities

Set of 2 large-sized cloths



**Silicone Cleansing Pads**  
 2 flexible silicone pads feature handles for better grip. Apply cleanser to face, then gently massage the skin with pad to remove impurities. Each, 6 x 5 x 1 cm **222-278-6**  
 reg. 6.99  
**4.99** the set  
 limited quantities

SET OF 2 cleansing pads



❖ **Facial Steamer**  
 Exfoliate, hydrate and moisturize skin with this warm, spa-quality facial steamer. ABS/resin. Electrical. **223-329-3**  
**69.99**  
 limited quantities

Steaming helps clear your complexion





**Rice Water Bright Facial Massage Cream**

Moisturizes dry skin, helps visibly brighten complexion and helps boost elasticity and radiance. After cleansing, massage into skin. Use 2-3 times a week. 200 ml **224-113-9**  
reg. 34.00  
**26.99**



**Rice & Ceramide Moisturizing Collection Emulsion**

Replenishes moisture instantly and for hours. Milky, non-sticky texture with a semi-liquid consistency. Use AM and PM, after cleansing, toning and before serum and moisturizer. 150 ml **224-123-2**  
reg. 12.00  
**10.00**



**Rice & Ceramide Moisturizing Collection Cream**

A moisturizing cream that helps give skin a visibly translucent and healthy glow. Use AM and PM, after cleansing, toning and serum. 50 ml **225-757-9**  
reg. 13.00  
**11.00**



**Rice & Ceramide Moisturizing Collection Toner**

A balancing and moisturizing toner. Use AM and PM, after cleansing, before serum and moisturizer. 150 ml **224-467-7**  
reg. 12.00  
**10.00**



**Jeju Aloe Fresh Soothing Gel**

With 95% aloe vera extract, instantly hydrates and soothes dry, sensitive skin. Infused with other soothing herbal extracts, like chamomile, lemon balm, rosemary and lavender. For face and body. 300 ml **225-126-5**  
reg. 13.00  
**9.99**



**Jeju Aloe Fresh Ice Soothing Gel**

3-in-1 gel with aloe vera extract. Use as a moisturizer, soothing after-sun care or as a facial mask. Can be refrigerated for more effective soothing results. Apply to dry, sensitive areas of face and body. 300 ml **223-093-5**  
reg. 16.00  
**12.99**



**Jeju Aloe Fresh Ice Soothing Face Mask**

Can be refrigerated for enhanced cooling. Soothes sun irritation. Refreshing and non-sticky. Apply sheet mask after cleansing, leave on for 10 minutes and gently pat remaining cream into face. One single-use mask. **223-093-6**  
reg. 6.00  
**5.00**



**Jeju Aloe Fresh Soothing Mist**

Soothing and cooling facial mist for face or body, with 90% aloe vera extract. Oil-free and quickly absorbed. After cleansing, spray wherever skin feels dry. 130 ml **222-337-3**  
reg. 23.00  
**18.99**



# BELIEVE YOUR EYES!

It helps lift, firm and tighten the appearance of skin around the eye.  
**All in one!**

In just 7 days,  
eye area looks  
lifted, firmer  
and tighter.\*



## OUR #1 EYE CREAM

🌟 Isa Knox Anew Clinical Collagen Booster Eye Lift Pro Dual Eye System

With a peptide complex. See a dramatic difference in one week. Upper eye gel, 10 ml; lower eye cream, 10 ml  
223-261-7

56.00 or...

**ONLY  
19.99**

WITH EVERY 20.00  
PURCHASE FROM  
THIS BROCHURE

(excluding page 115)

\*Based on a clinical study.



# moisturize face & eyes



For dullness and uneven tone and texture

For dryness, loss of elasticity and firmness



For redness, irritation and dryness

For dryness, loss of elasticity and firmness



### the true cream aqua bomb

This ultralight, water-based, refreshing gel cream bursts upon application to instantly cool skin and release a flood of weightless moisture. Helps visibly improve skin elasticity. Skin looks healthy, smooth and supple. Suitable for sensitive skin.

Full size, 50 ml | Try-it size, 25 ml  
222-722-7 | 222-723-8  
50.00 | 29.00

### the true cream moisturizing bomb

This lightweight yet indulgent cream, with a comforting, cushiony, whipped texture, envelops skin with intense, long-lasting moisture. Skin looks and feels smooth, supple and deeply nourished. Suitable for sensitive skin.

Full size, 50 ml | Try-it size, 25 ml  
225-386-5 | 222-724-9  
50.00 | 29.00

### the true cream aqua bomb aloe

A moisturizing gel-cream with aloe vera extract to instantly soothe skin, plus a multi-level blend of hyaluronic acid that penetrates different layers for intense hydration, and vitamin E to visibly smooth texture and even tone. 50 ml 223-213-2 50.00

### moisturizing eye bomb

This lightweight, refreshing eye cream cools on contact and helps keep eye area firm, resilient and smooth for crease-free makeup application. 25 ml 222-319-0 62.00



# serums

For fine lines and wrinkles, look of pores, and loss of firmness and elasticity



### youth creator - age knockdown bomb

Antioxidant-rich serum helps reduce the appearance of enlarged pores and boosts elasticity for smoother, younger-looking skin. With nourishing ceramides. 50 ml **222-841-9 80.00**

For elasticity, loss of firmness and the look of pores



### the true serum revitalizing niacinamide/amino acids solution 10%

This powerful serum with niacinamide, amino acids solution and a special blend of herbs help shrink the look of pores for a smoother appearance. 50 ml **222-486-6 65.00**

For dullness and uneven tone and texture



### the true serum resurfacing PHA/AHA 10%

Helps gently and effectively exfoliate to visibly improve skin tone and texture and reveal a fresher, more youthful look. 50 ml **222-486-8 65.00**

Activating massager stimulates circulation and helps promote the absorption of serums



Rotates 360°

### Eclat D'or Youth Activating Massager

Chrome-plated roller deeply kneads the curvature of your face and décolletage to help revive and tighten tired, stressed skin. 15 cm L. **221-932-0 reg. 70.00 55.00**

# fresh scents

Discover belif's eau de parfums that capture nature's vitality.



**Top notes:** Sparkling citrus and sweet berry  
**Mid notes:** Spring blossoms and white flower  
**Base notes:** White musk and woods



### the garden eau de parfum *fruity floral*

Energize your senses with an invigorating fragrance that takes you on a stroll into a garden, where belif unearthed the energy of nature. 50 ml **222-914-1 reg. 80.00 65.00**

**Top notes:** Lemon zest and dewy bamboo  
**Mid notes:** Pear blossom and water lily  
**Base notes:** Amber and musk



### the woods eau de parfum *fresh green floral*

Invigorating floral greens transport you into the woods, where belif discovered the secrets of herbal remedies. 50 ml **222-921-0 reg. 80.00 65.00**

## CALMING RELIEF FOR FACE

Skin feels dry, itchy, red, sensitive and irritated?

### A.I. Cream

Facial cream for instant and long-lasting, soothing relief of redness and itching due to dryness. 100 ml **222-791-9** reg. 59.00 **47.99** or...

### A.I. Lotion

Facial lotion for instant and long-lasting, soothing relief of redness and itching due to dryness. Light cream emulsion. 200 ml **222-791-7** reg. 59.00 **47.99** or...



## DAILY MOISTURE THERAPY FOR FACE & BODY

Sensitive skin feels dry and tight?

### Dermo-Cleanser

Mild and gentle, soap-free facial cleanser. Appropriate for frequent use, with or without water (can apply with cotton pad). Leaves skin feeling clean and soft. 150 ml **222-791-5** reg. 34.00 **26.99** or...

### Body Lotion

Lightweight, quickly absorbed lotion with the feel of a light emulsion cream. 200 ml **222-791-3** reg. 42.00 **33.99** or...



# PHYSIOGEL face & body

## BUY 1 GET 1 HALF PRICE

PAGES 120-121  
Of equal or lesser value.

### Calming Relief

#### A.I. Soothing Masks

Calms and soothes dry, red, itchy and sensitive skin due to dryness. 5 single-use sheet masks. **224-075-8** reg. 35.00 **27.99** pack of 5 or...

#### Daily Moisture Therapy Cream Masks

Provides instant and long-lasting moisturization. 5 single-use sheet masks. **224-311-6** reg. 35.00 **27.99** pack of 5 or...

Hypoallergenic and non-comedogenic.  
No fragrances, preservatives or colourants.

Pack of 5



Pack of 5

### Therapy Facial Cream

Day cream provides long-lasting moisture for normal to dry sensitive skin. 75 ml **222-615-7** reg. 41.00 **32.99**  
150 ml **222-615-9** reg. 59.00 **47.99** or...

### Facial Lotion

Lightweight, quickly absorbed lotion with the feel of a light emulsion cream. 200 ml **222-615-5** reg. 45.00 **34.99** or...



# SHADES OF SPRING

Pale pastels set the scene for the season.

Purple/Silvertone  
225-779-5



Pink/Goldtone  
225-779-4



White/Goldtone  
225-779-7



Blue/Silvertone  
225-779-6



## NEW

### Stone Cluster Collection

Coloured stones with sparkling accents.

#### Earrings

Studs,  
1 cm diam.  
Pierced.  
reg. 14.99  
11.99 each

#### Cuff Bracelet

One size  
fits most.  
reg. 28.99  
21.99 each

Purple/Silvertone  
225-779-9



Pink/Goldtone  
225-779-8



White/Goldtone  
225-780-1



Blue/Silvertone  
225-780-0



# PEARLY ELEGANCE

Tastefully accented with the elegant look of seed pearls and gold.

**NEW**

## Rosy and Pearly Collection

Opalesque and pearly accents set in rose goldtone.

### Layered Necklace

3-layered necklace. Longest layer: 51 cm L with 9 cm extender; shortest layer: 42 cm L. **225-787-1** reg. 32.99 **24.99**

### Stretch Bracelet Set

Set of 3. Stretches to fit most. **225-787-2** reg. 24.99 **19.99** the set

### Earrings

6 cm L. Pierced. **225-787-0** reg. 18.99 **14.99**

3-PIECE bracelet set

3-PIECE bracelet set

## Black and White Layers Collection

Black and white faceted glass and cat-eye beads set in silvertone.

### Long Tassel Necklace

91 cm L with toggle closure. **225-741-8** reg. 37.99 **29.99**

### Stretch Bracelets

Set of 3. One size fits most. **225-745-4** reg. 24.99 **19.99** the set

### Hoop Earrings

Pierced. 6 cm diam. **225-745-3** reg. 18.99 **14.99**

# STAR STRUCK

Show off your **astrological constellation** and sparkle like the stars!



2-PIECE SET necklace & earrings



**AQUARIUS**  
Jan. 20 - Feb. 18



**ARIES**  
Mar. 21 - Apr. 19  
225-777-4



**LIBRA**  
Sep. 23 - Oct. 22  
225-778-0



**TAURUS**  
Apr. 20 - May 20  
225-777-5



**SCORPIO**  
Oct. 23 - Nov. 21  
225-778-1



**GEMINI**  
May 21 - Jun. 20  
225-777-6



**SAGITTARIUS**  
Nov. 22 - Dec. 21  
225-778-2



**CANCER**  
Jun. 21 - Jul. 22  
225-777-7



**CAPRICORN**  
Dec. 22 - Jan. 19  
225-778-3



**LEO**  
Jul. 23 - Aug. 22  
225-777-8



**AQUARIUS**  
Jan. 20 - Feb. 18  
225-778-4



**VIRGO**  
Aug. 23 - Sep. 22  
225-777-9



**PISCES**  
Feb. 19 - Mar. 20  
225-778-5

## Zodiac Constellations Necklace and Earring Gift Set

Blue stones and the look of pearls set in goldtone. Chain, 42 cm L with 9 cm extender. Pendant, 3 cm diam. Pierced studs.  
reg. 24.99  
**19.99 each set**

# SUNSET HUES

Peach, pink and shimmering purple stones create evening splendour.



2-PIECE SET necklace & earrings



3-PIECE bracelet set



## NEW

**Purple Sunset Collection**  
Layers of purple-coloured beads and coral-coloured accents set in goldtone.

**Necklace & Earring Set**  
3-layered necklace. 42 cm L with 9 cm extender. Pendant, 3 cm L. **225-682-4**  
reg. 45.99  
**35.99 the set**

**Bracelet Set**  
Three-piece set. Stretches to fit most. **225-682-5**  
reg. 24.99  
**19.99 the set**

❖ **Purple Strap Watch**  
Purple leather-like croc strap, 22 cm L. Silvertone pavé bezel case, 27 x 27 mm **225-682-6**  
reg. 68.99  
**54.99**



SAINT PATRICK'S DAY IS MARCH 17

# SIMPLY CHARMING

Captivate with the symbols of luck and love.



Ring sizer, page 134

**NEW**

## Sparkling Clover Collection

Light green stones and clear stone accents set in goldtone.

### Necklace

Chain, 42 cm L with 9 cm extender.  
Pendant, 3 cm L.  
**225-787-3**  
reg. 24.99  
**19.99**

### Earrings

Pierced, 1 cm diam.  
**225-787-4**  
reg. 18.99  
**14.99**

### Ring

2 cm diam.  
6 **225-787-6**  
8 **225-787-7**  
10 **225-787-8**  
reg. 18.99  
**14.99**

# FROM THE HEART

A collection heavy with romance and charm.



Ring sizer, page 134



JEWELLERY

## Love You To Pieces Collection

Rose- and siam-coloured glass stones with clear stone accents set in silvertone.

### Ring

1 cm L.  
6 **225-645-9**  
8 **225-646-0**  
10 **225-646-1**  
reg. 18.99  
**14.99**

### Necklace

Chain, 42 cm L with 9 cm extender.  
Pendant, 3 cm L.  
**225-645-5**  
reg. 24.99  
**19.99**

### ❖ Watch

Red leather-like strap, 23 cm L.  
Silvertone case, 28 mm diam. with clear stone accents on bezel.  
**225-651-0**  
reg. 68.99  
**54.99**

### Earrings

Pierced studs, 1 cm L.  
**225-645-7**  
reg. 18.99  
**14.99**

### Pull-Cord Bracelet

Adjustable pull-cord; one size fits most.  
**225-645-8**  
reg. 18.99  
**14.99**

# RAINBOW HUES

A parade of pastel stones brightens up the season.



**NEW**

**Radiant Rainbow Collection**  
Multi-colour baguette epoxy or glass stones set in silvertone.

**Necklace**  
Chain, 42 cm L with 9 cm extender. **225-786-5**  
reg. 24.99  
**19.99**

**Ear Crawler Earrings**  
Pierced, 2 cm L. **225-786-3**  
reg. 14.99  
**11.99**

**Ring**  
6 **225-785-9**  
8 **225-786-0**  
10 **225-786-1**  
reg. 18.99  
**14.99**

**Stretch Bracelet**  
One size fits most. **225-786-2**  
reg. 28.99  
**21.99**

**Earring Pack**  
6-pair pack of pierced hoops and studs. Hoops, 1 cm L. **225-786-4**  
reg. 28.99  
**21.99 the pack**



Ring sizer, page 134

6-pair earring pack



**Blush and Blue Gems Collection**  
Blue and blush coloured stones set in goldtone.

**Statement Necklace and Earring Set**  
42 cm L with 9 cm extender. Pierced studs, 2 cm diam. **225-768-1**  
reg. 44.99  
**34.99 the set**

**Stretch Bracelet**  
Stretches to fit most. **225-768-2**  
reg. 32.99  
**24.99**

**Statement Ring**  
3 cm diam. **6 225-768-3**  
**8 225-768-4**  
**10 225-768-5**  
reg. 18.99  
**14.99**

2-PIECE SET  
necklace &  
earrings





**NEW**

**Filigree Flower Collection**

Goldtone filigree flower motif with cz stone accents.

**Earrings**  
Pierced drops, 5 cm L.  
**225-780-8**  
reg. 18.99  
**14.99**

**Necklace**  
3-layer beaded chain necklace. 51 cm L with 9 cm extender. Pendant, 4 cm L.  
**225-780-9**  
reg. 32.99  
**24.99**

❖ **Cuff Watch**  
With glass stones. One size fits most with hinged closure. 26 mm diam. case.  
**225-780-6**  
reg. 96.99  
**72.99**

**Stretch Bracelet**  
Stretches to fit most.  
**225-780-7**  
reg. 24.99  
**19.99**



**LAYER IT ON**

Take the guesswork out of the layering trend.

**NEW**

**Laidback Layers Collection**  
Layered looks in silvertone.

**Necklace**  
Longest layer: 56 cm L; shortest layer: 46 cm L. **225-780-2**  
reg. 32.99  
**24.99**

**Earring Pack**  
5-pair pack. Ranges from 1 cm diam. (studs) to 6 cm diam. (hoops). Pierced. **225-780-5**  
reg. 28.99  
**21.99 the pack**

**Cuff Bracelet**  
Fits most wrists. **225-780-3**  
reg. 28.99  
**21.99**



5-PAIR earring pack



STERLING SILVER

# violet passion

Genuine amethyst stones in a modern sterling silver setting.



GENUINE amethyst



**NEW**

### Sterling Silver Genuine Amethyst Collection

Genuine amethyst stone and sterling silver.

#### Necklace

43 cm L with 3 cm extender. Pendant, 2 cm L; <sup>3</sup>/<sub>4</sub> carat weight equivalent. **225-778-6 86.99**

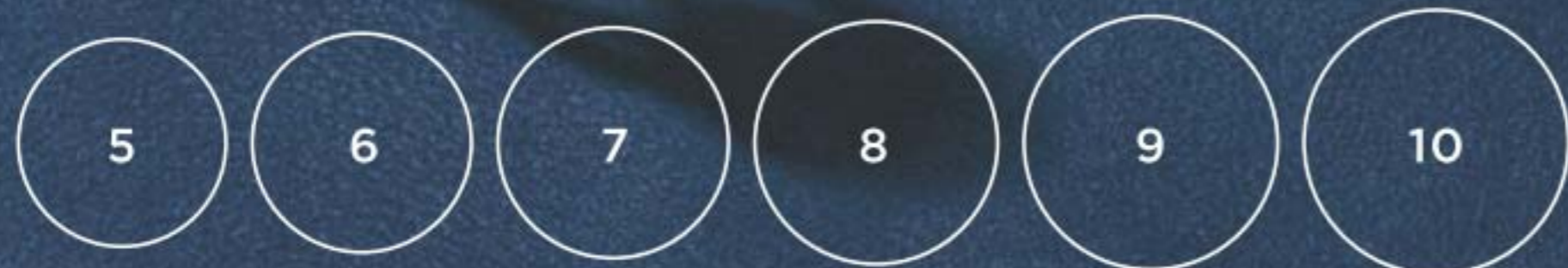
#### Earrings

Pierced drops, 2 cm L; <sup>1</sup>/<sub>2</sub> carat weight equivalent. **225-778-7 79.99**

#### Ring

1 carat weight equivalent.  
5 **225-778-8**  
6 **225-778-9**  
7 **225-779-0**  
8 **225-779-1**  
9 **225-779-2**  
10 **225-779-3**  
**79.99**

FIND YOUR RING SIZE match your ring to one of these circles



STERLING SILVER

# heart to heart

Make a love connection with interconnected hearts.

### Sterling Silver Heart Collection

Genuine sterling silver with cz stones.

#### Earrings

1 cm L. Pierced. **225-715-5 72.99**

#### Necklace

43 cm L with 3 cm extender. Pendant, 4 cm W. **225-715-4 79.99**

#### Ring

2 cm L.  
5 **225-715-6** 8 **225-715-9**  
6 **225-715-7** 9 **225-716-0**  
7 **225-715-8** 10 **225-716-1**  
**72.99**



**NEW**

### Sterling Silver Claddagh Ring

Symbolizes love, loyalty and friendship. CZ, <sup>1</sup>/<sub>4</sub> carat weight equivalent, set in sterling silver.



5 **225-838-3** 8 **225-838-6**  
6 **225-838-4** 9 **225-838-7**  
7 **225-838-5** 10 **225-838-8**  
**64.99**

# LIVE IN THE PINK

**Your purchases can  
make a difference  
in women's lives.**

Purchases of Avon Breast Cancer fundraising products have helped fund breast cancer research, enabled more than 18 million women to access breast cancer screenings and educated more than 145 million people about breast health around the globe. Sales of these products turn diagnoses into more stories of survival.

**SHOP FOR THE CAUSE  
10% CONTRIBUTION**



**AVON WILL DONATE 10%** of the sale price from these breast cancer fundraising products to the Avon Foundation for Women, Canada to support the cause. Learn more at [avongivesback.ca](http://avongivesback.ca)



**2 PIECE SET  
necklace &  
earrings**

**NEW**

✿ **Breast Cancer Awareness  
from the Heart Necklace  
and Earring Set**

Silvertone with light pink accents. Chain, 42 cm L with 9 cm extender.

Pendant, 3 cm L. Pierced drops, 2 cm L. **225-907-1  
21.00 the set**

✿ **Breast Cancer Awareness  
Charming Bracelet**

Shades of pink glass beads and silvertone metal beads with light pink enamel ribbon charm.

One size fits most. **225-907-2  
18.00**

❖ **V-Neck Plaid Top**

Blue plaid top with open collar, inverted pleat detail on front and long sleeves with cuffs. Polyester. Centre back length: 74 cm on medium; 76 cm on 1X. Machine wash, line dry.  
XS (0-2) **225-612-7**  
S (4-6) **225-612-8**  
M (8-10) **225-612-9**  
L (12-14) **225-613-0**  
XL (16) **225-613-1**

**59.99**

1X (18W-20W) **225-613-2**  
2X (22W-24W) **225-613-3**  
3X (26W-28W) **225-613-4**  
**64.99**

**cool** *style*

Fashion pieces with soft textures in plaid or casual silhouettes.



❖ **Side Twist Crew Neck Top**

Purple top with round neckline, long sleeves and twisted side detail. Rayon/spandex. Centre back length: 66 cm on medium; 71 cm on 1X. Machine wash, dry flat.  
XS (0-2) **225-600-6**  
S (4-6) **225-600-7**  
M (8-10) **225-600-8**  
L (12-14) **225-600-9**  
XL (16) **225-601-0**

**49.99**

1X (18W-20W) **225-601-1**  
2X (22W-24W) **225-601-2**  
3X (26W-28W) **225-601-3**  
**54.99**

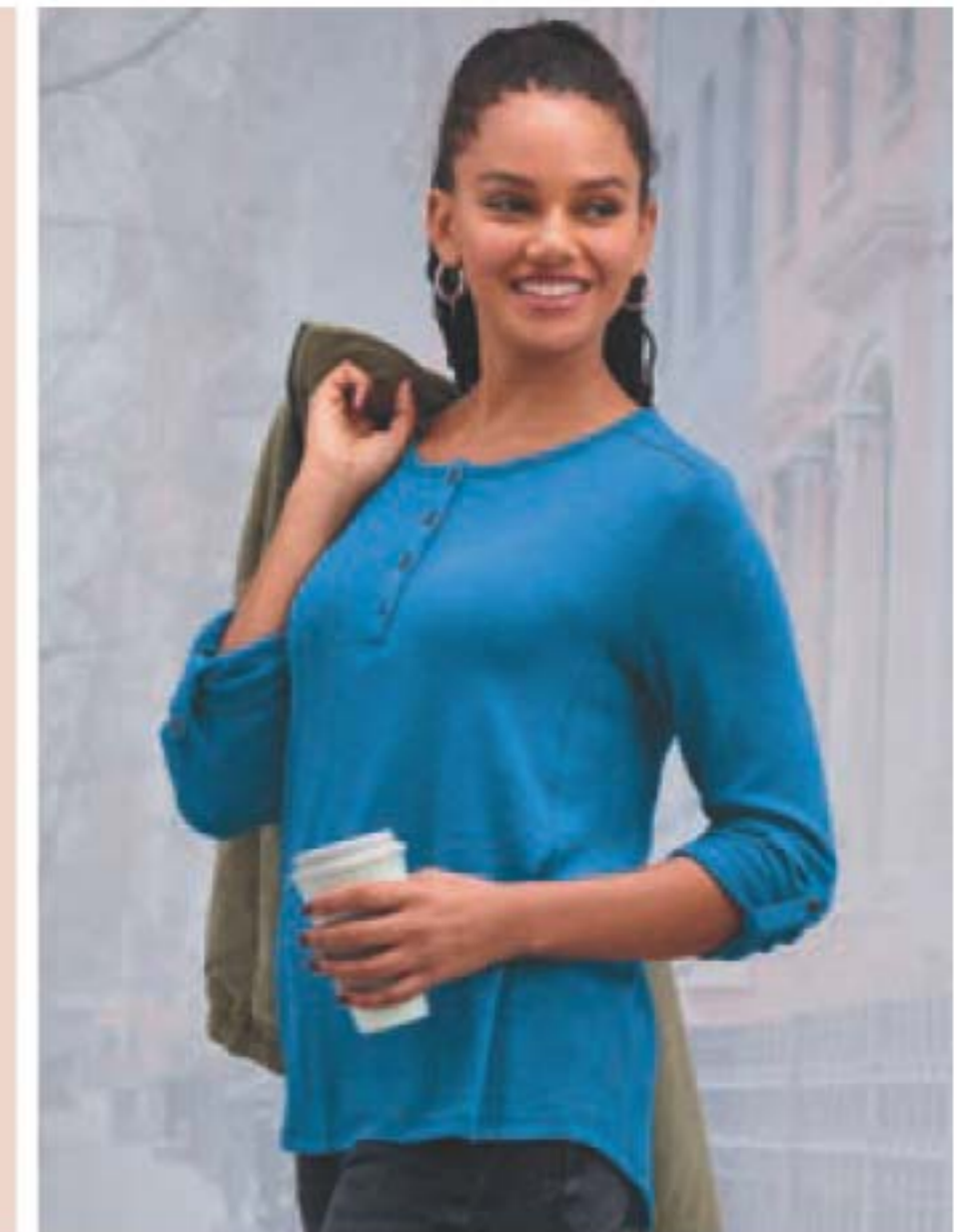
Model is wearing Faux-Leather Leggings sold on page 142.

❖ **Henley Knit Top**

Blue knit top with round neckline, half placket with buttons, long sleeves with tab detail and shirttail hem. Polyester/cotton/spandex. Centre back length: 66 cm on medium; 71 cm on 1X. Machine wash, dry flat.

XS (0-2) **225-604-8**  
S (4-6) **225-604-9**  
M (8-10) **225-605-0**  
L (12-14) **225-605-1**  
XL (16) **225-605-2**  
**49.99**

1X (18W-20W) **225-605-3**  
2X (22W-24W) **225-605-4**  
3X (26W-28W) **225-605-5**  
**54.99**



Sleeves feature jacquard print

# casual fashion

Stylish casual wear that's cozy and comfy.

2-PIECE SET

Jogger style bottoms feature side pockets

### ❖ 2-Piece Lounge Set

Grey 2-piece set. Top with round neckline and contrasting jacquard-printed sleeves with cuffs. Jogger style bottoms with side seam pockets. Polyester/rayon/spandex. Centre back length: 57 cm on medium; 62 cm on 1X. Inseam: 70 cm for all sizes. Machine wash, dry flat.

XS (0-2) **225-605-7**  
S (4-6) **225-605-8**  
M (8-10) **225-605-9**  
L (12-14) **225-606-0**  
XL (16) **225-606-1**

**83.99 the set**

1X (18W-20W) **225-606-2**  
2X (22W-24W) **225-606-3**  
3X (26W-28W) **225-606-4**

**88.99 the set**

Model is wearing Canvas Sneakers sold on page 153.

**NEW**

### ❖ Asymmetrical Zip Pullover

Ivory long sleeve pullover top with functional double zipper detail on front. Polyester/rayon/spandex. Centre back length: 70 cm on medium; 75 cm on 1X.

Machine wash, dry flat.

XS (0-2) **225-611-8**

S (4-6) **225-611-9**

M (8-10) **225-612-0**

L (12-14) **225-612-1**

XL (16) **225-612-2**

**66.99**

1X (18W-20W) **225-612-3**

2X (22W-24W) **225-612-4**

3X (26W-28W) **225-612-5**

**71.99**



Functional zipper detail on front sides

# cool+ index

Latest styles with on-trend patterns and textures.

## ❖ Printed V-Neck Grommet Top

Printed top with V-neckline, long sleeves and grommet detail on front. Polyester/spandex. Centre back length: 64 cm on medium; 69 cm on 1X. Machine wash, dry flat.

XS (0-2) <b>225-602-2</b>	1X (18W-20W) <b>225-602-7</b>
S (4-6) <b>225-602-3</b>	<b>225-602-7</b>
M (8-10) <b>225-602-4</b>	2X (22W-24W) <b>225-602-8</b>
L (12-14) <b>225-602-5</b>	<b>225-602-8</b>
XL (16) <b>225-602-6</b>	3X (26W-28W) <b>225-602-9</b>
<b>59.99</b>	<b>64.99</b>

## ❖ Faux-Leather Leggings

Black pull-on faux-leather leggings with elastic waist band. Polyester/spandex. Inseam: 72 cm for all sizes. Machine wash, dry flat.

XS (0-2) <b>225-606-5</b>	1X (18W-20W) <b>225-607-1</b>
S (4-6) <b>225-606-6</b>	<b>225-607-1</b>
M (8-10) <b>225-606-7</b>	2X (22W-24W) <b>225-607-2</b>
L (12-14) <b>225-606-8</b>	<b>225-607-2</b>
XL (16) <b>225-606-9</b>	3X (26W-28W) <b>225-607-3</b>
<b>57.99</b>	<b>62.99</b>

Model is wearing  
Faux-Fur Side  
Zip Sneakers  
sold on  
page 152.



## ❖ Cowl Neck Fringe Pullover

Black pullover top with cowl neckline, long sleeves and fringe detail. Polyester/spandex. Centre back length: 71 cm on medium; 76 cm on 1X. Machine wash, dry flat.

XS (0-2) <b>225-601-4</b>
S (4-6) <b>225-601-5</b>
M (8-10) <b>225-601-6</b>
L (12-14) <b>225-601-7</b>
XL (16) <b>225-601-8</b>
<b>66.99</b>

1X (18W-20W) <b>225-601-9</b>
2X (22W-24W) <b>225-602-0</b>
3X (26W-28W) <b>225-602-1</b>
<b>71.99</b>



# fashion forward

Versatile fashion pieces that take you from season to season.

## ❖ Sequin Pullover Top

Pink raglan long-sleeve top with sequin panel on front. Polyester/spandex. Centre back length: 69 cm on medium; 74 cm on 1X. Machine wash, dry flat.

XS (0-2) **225-603-9**

S (4-6) **225-604-0**

M (8-10) **225-604-1**

L (12-14) **225-604-2**

XL (16) **225-604-3**

**54.99**

1X (18W-20W)

**225-604-4**

2X (22W-24W)

**225-604-5**

3X (26W-28W)

**225-604-6**

**59.99**

Elegant sequin panel front

Model is wearing Faux-Leather Leggings sold on page 142.

## ❖ Button Shirt

Tan corduroy collar shirt with long sleeves, buttoned cuff and front pockets with flaps. Polyester/spandex. Centre back length: 76 cm on medium; 81 cm on 1X. Machine wash, dry flat.

XS (0-2) **225-603-0**

S (4-6) **225-603-1**

M (8-10) **225-603-2**

L (12-14) **225-603-3**

XL (16) **225-603-4**

**71.99**

1X (18W-20W)

**225-603-5**

2X (22W-24W)

**225-603-6**

3X (26W-28W)

**225-603-7**

**76.99**

**NEW**

❖ **Wrap Front Cardigan**

Oatmeal heather wrap-front cardigan with tie detail on side and long sleeves. Viscose/polyester. Centre back length: 69 cm on medium; 74 cm on 1X. Machine wash, dry flat.

XS (0-2) **225-610-9**

S (4-6) **225-611-0**

M (8-10) **225-611-1**

L (12-14) **225-611-2**

XL (16) **225-611-3**

**74.99**

1X (18W-20W) **225-611-4**

2X (22W-24W) **225-611-5**

3X (26W-28W) **225-611-6**

**79.99**

❖ **2-Pack Everyday Leggings**

Includes black and grey full-length leggings with elastic waistband. Cotton/spandex. Inseam: 71 cm for all sizes.

Machine wash, dry flat.

XS (0-2) **222-449-4**

S (4-6) **222-449-5**

M (8-10) **222-449-6**

L (12-14) **222-449-7**

XL (16) **222-449-8**

**52.99**

the pack of 2

1X (18W-20W) **222-449-9**

2X (22W-24W) **222-450-0**

3X (26W-28W) **222-450-1**

**57.99**

the pack of 2

**BLACK**

**GREY**



❖ **Quilted Zip-Up Jacket**

Green quilted jacket with long sleeves, elastic cuffs, high collar, zipper closure on front and side seam pockets. Polyester/viscose. Centre back length: 64 cm on medium; 69 cm on 1X. Machine wash, line dry.

XS (0-2) **225-610-0**

S (4-6) **225-610-1**

M (8-10) **225-610-2**

L (12-14) **225-610-3**

XL (16) **225-610-4**

**104.99**

1X (18W-20W) **225-610-5**

2X (22W-24W) **225-610-6**

3X (26W-28W) **225-610-7**

**109.99**

**FASHION SIZE CHART**

SIZE	BUST	WAIST	HIP
XS 0/2	80 - 83 CM	62 - 65 CM	84 - 86 CM
S 4/6	85 - 89 CM	67 - 71 CM	90 - 94 CM
M 8/10	93 - 97 CM	75 - 79 CM	98 - 102 CM
L 12/14	100 - 104 CM	83 - 86 CM	105 - 109 CM
XL 16	108 - 112 CM	90 - 94 CM	113 - 117 CM
1X 18W/20W	118 - 123 CM	99 - 104 CM	122 - 127 CM
2X 22W/24W	128 - 133 CM	109 - 114 CM	132 - 137 CM
3X 26W/28W	138 - 144 CM	119 - 124 CM	142 - 147 CM

Visit [avon.ca/fitguide](http://avon.ca/fitguide) for additional size and fit information

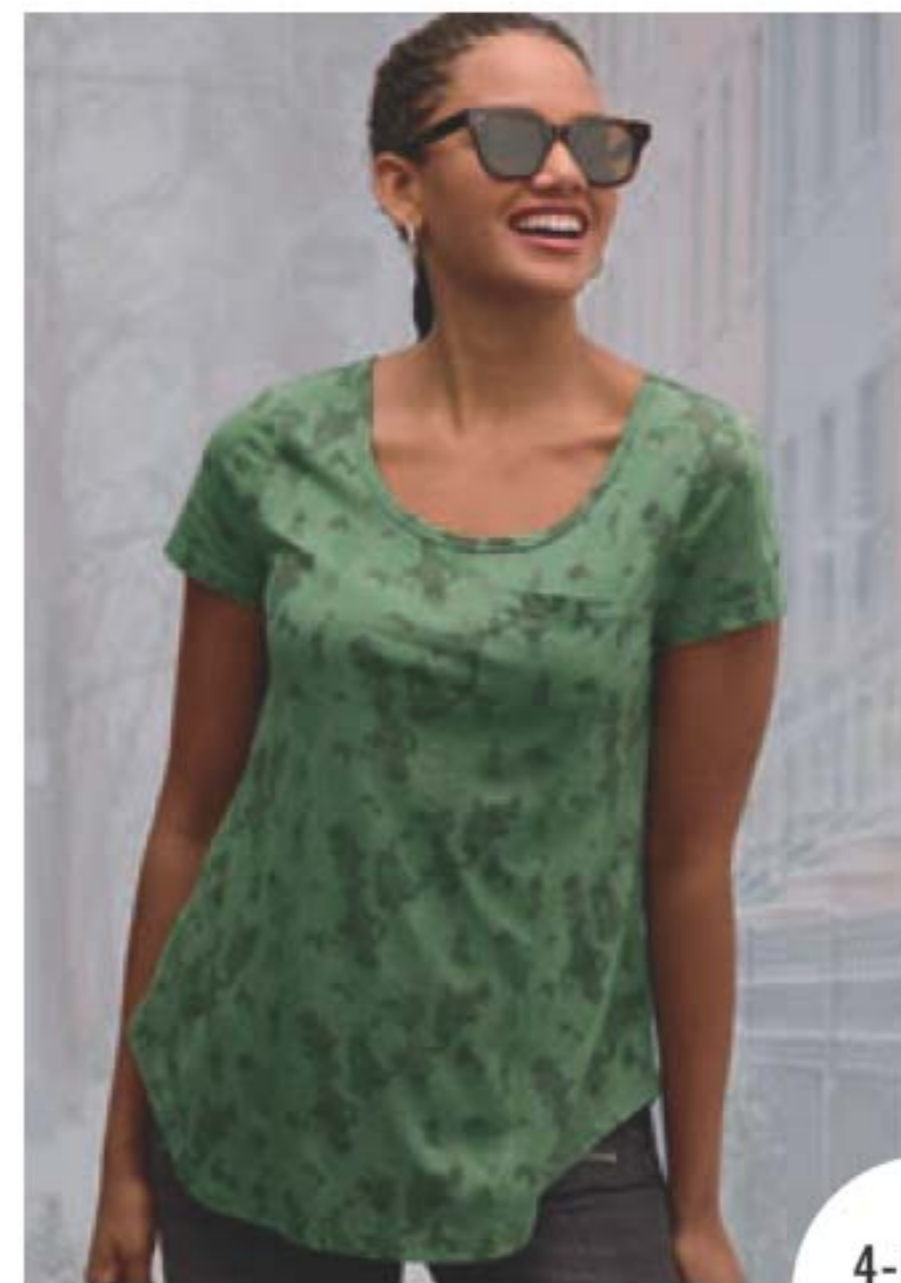


Model is wearing Faux-Fur Side Zip Sneaker sold on page 152.



Criss-cross detail on neckline

2-PACK TOP



❖ 4-Pack Pocket Crew Neck Tees

Pack includes printed green and solid blue, pink and grey tees with round neckline, short sleeves and front pocket. Cotton/polyester. Centre back length: 66 cm on medium; 71 cm on 1X. Machine wash, dry flat.

- XS (0-2) 225-607-4
- S (4-6) 225-607-5
- M (8-10) 225-607-6
- L (12-14) 225-607-7
- XL (16) 225-607-8

**66.99** the pack of 4

- 1X (18W-20W) 225-608-0
- 2X (22W-24W) 225-608-1
- 3X (26W-28W) 225-608-2

**71.99** the pack of 4

4-PACK TEES



High collared vest with side seam pockets

❖ 2-Pack Criss-Cross Tops

Pack includes black and grey tops with long sleeves. Polyester/rayon/spandex. Centre back length: 66 cm on medium; 71 on 1X. Machine wash, dry flat.

- XS (0-2) 225-608-3
- S (4-6) 225-608-4
- M (8-10) 225-608-5
- L (12-14) 225-608-6
- XL (16) 225-608-7
- 1X (18W-20W) 225-608-8
- 2X (22W-24W) 225-608-9
- 3X (26W-28W) 225-609-0

**71.99** the pack of 2

❖ Fleece Zip Front Vest

Grey zip-front vest. Polyester. Centre back length: 65 cm on medium; 71 cm on 1X. Hand wash, line dry.

- XS (0-2) 225-609-2
- S (4-6) 225-609-3
- M (8-10) 225-609-4
- L (12-14) 225-609-5
- XL (16) 225-609-6
- 1X (18W-20W) 225-609-7
- 2X (22W-24W) 225-609-8
- 3X (26W-28W) 225-609-9

**74.99**



# soft denim

A new take on a denim jacket.



Functional tie at waistband creates a beautiful cinched look

## NEW

### ❖ Easy Going Denim Jacket

Two pouch pocket jacket in soft denim. Centre back length: 66 cm on medium; 69 cm on XL. Cotton/polyester/spandex. Machine wash, hang to dry.

S (4-6) **225-911-5**  
 M (8-10) **225-911-6**  
 L (12-14) **225-911-7**  
 XL (16) **225-911-8**  
**110.00**  
 1X (8W-20W) **225-911-9**  
 2X (22W-24W) **225-912-0**  
 3X (26W-28W) **225-912-1**

**115.00**  
 limited quantities



Jacket features snap closure front and pouch pockets

Snap closure tabs

La Seta

## NEW

### ❖ La Seta 3/4 Sleeve Muted Floral Print T-Shirt

V-neck top with 3/4 length sleeves. Polyester. Centre back length: 66 cm on medium; 69 cm on XL. Machine wash and dry.

XS (0-2) **225-901-5** XL (16) **225-901-9**  
 S (4-6) **225-901-6** XXL (18) **225-902-0**  
 M (8-10) **225-901-7** **95.00**  
 L (12-14) **225-901-8**

**90.00**  
 limited quantities

## NEW

### ❖ La Seta Garment Dye Ankle Pants

Sage green Euro twill pants with 5-pocket design. Contoured, comfort waistband. Cotton/spandex. Inseam: 71 cm for all sizes. Machine wash, dry flat.

0 **225-902-1** 16 **225-902-9**  
 2 **225-902-2** 18 **225-903-0**  
 4 **225-902-3** **130.00**  
 6 **225-902-4**  
 8 **225-902-5**  
 10 **225-902-6**  
 12 **225-902-7**  
 14 **225-902-8**

**125.00**  
 limited quantities



MUTED SLEEVE FLORAL T-SHIRT				
SIZE	BUST*	WAIST*	SWEEP*	CBN**
XS	94 CM	90 CM	98 CM	64 CM
S	99 CM	95 CM	103 CM	65 CM
M	104 CM	100 CM	108 CM	66 CM
L	112 CM	108 CM	116 CM	67 CM
XL	121 CM	117 CM	124 CM	69 CM
XXL	129 CM	126 CM	133 CM	70 CM

\*CIRCUMFERENCE \*\*CBN - LENGTH FROM CENTRE BACK

### GARMENT DYE ANKLE PANTS

SIZE	WAIST	HIP
0	67.5 CM	85 CM
2	70 CM	87.5 CM
4	72.5 CM	90 CM
6	75 CM	92.5 CM
8	77.5 CM	95 CM
10	80 CM	97.5 CM
12	82.5 CM	100 CM
14	86 CM	104 CM
16	90 CM	108 CM
18	95 CM	113 CM



# stylish footwear

Fab footwear for whether you're stepping out in style or just chillin' at home.



Features functional zipper and faux-fur trim



Tassel details and zipper closure



Slip-on style



## ❖ Faux-Fur Side Zip Sneakers

Olive green high-top sneakers with quilted detail, functional zipper, lace-up front and faux-fur trim. Man-made materials.

6M 225-616-0 7M 225-616-1 8M 225-616-2  
9M 225-616-3 10M 225-616-4 11M 225-616-5  
**78.99 the pair**

## ❖ Side Tassel Booties

Black short booties with tassel detail and zipper closure. Man-made materials.

6M 225-614-9 7M 225-615-0 8M 225-615-1  
9M 225-615-2 10M 225-615-3 11M 225-615-4  
**66.99 the pair**

## ❖ Canvas Fashion Sneakers

Printed canvas sneakers with elastic criss-cross detail on front for easy on/off. Man-made materials.

6M 225-625-1 7M 225-625-2 8M 225-625-3  
9M 225-625-4 10M 225-625-5 11M 225-625-6  
**58.99 the pair**

## ❖ Cozy-Lined Booties

Tan faux suede booties with faux-fur lining and double buckle detail on side. Man-made materials.

6M 225-613-6 7M 225-613-7 8M 225-613-8  
9M 225-613-9 10M 225-614-0 11M 225-614-1  
**54.99 the pair**

For all styles; half sizes, order one size up.

# tunic tees

Your favourite go-to staple, perfect for mindful yoga sessions and laid-back weekends.



NOW AVAILABLE IN TWO NEW COLOURS!



4-way active stretch with UPF\* 40+ protection

Hi-low shirttail hem with side slits

## NEW

### ❖ Skechers® GoDri™ Swift Tunic Tee

Moisture wicking, quick dry fabric. Polyester/spandex. Centre back length: 76 cm on medium; 80 cm on XL. Machine wash and dry.

#### Lavender

XS (0-2) **225-825-4**  
S (4-6) **225-825-5**  
M (8-10) **225-825-6**  
L (12-14) **225-825-7**

**47.00**

XL (16-18) **225-825-8**  
XXL (18W-20W) **225-825-9**  
XXXL (22W-24W) **225-826-0**  
**52.00**

#### Black

XS (0-2) **225-827-5**  
S (4-6) **225-827-6**  
M (8-10) **225-827-7**  
L (12-14) **225-827-8**

**47.00**

XL (16-18) **225-827-9**  
XXL (18W-20W) **225-828-0**  
XXXL (22W-24W) **225-828-1**  
**52.00**

# SKECHERS



Features double layer compression high-waisted waistband and exterior side pockets

Contrast floral print panels

## NEW

### ❖ Skechers® GoFlex™ Ultraviolet Legging

Black athletic pants with double-layer compression waistband and 2 side pockets. Moisture-wicking, quick drying breathable GoFlex™ fabric. Inseam: 64 cm for all sizes. Nylon/spandex. Machine wash and dry.

XS (0-2) **225-824-7**  
S (4-6) **225-824-8**  
M (8-10) **225-824-9**  
L (12-14) **225-825-0**  
**80.00**  
XL (16-18) **225-825-1**  
XXL (18W-20W) **225-825-2**  
XXXL (22W-24W) **225-825-3**

**85.00**

limited quantities

#### SKECHERS® SIZE CHART

SIZE	WAIST	HIP	CHEST
XS 0/2	64-67 CM	88-91 CM	83-85 CM
S 4/6	70-72 CM	93-97 CM	88-90 CM
M 8/10	74-77 CM	98-102 CM	93-95 CM
L 12/14	81-85 CM	105-109 CM	99-103 CM
XL 16/18	90-93 CM	114-117 CM	107-110 CM
XXL 18W/20W	99-102 CM	123-126 CM	114-119 CM
XXXL 22W/24W	108-110 CM	132-135 CM	123-128 CM

\* UPF (Ultraviolet Protection Factor) indicates how much UV radiation a fabric allows to reach the skin through the fabric.



Features a soft cotton-like hand feel matte finish and UPF\* 40+ protection

# workout or casual

Delivers flexible comfort and versatility for every activity



Double layer  
compression  
high-waisted  
waistband

## NEW

❖ **Skechers® GoWalk™ Joy Pant**  
Black athletic pants with moisture-wicking, quick drying breathable GoFlex™ fabric. Inseam: 81 cm for all sizes. Nylon/spandex. Machine wash and dry.

XS (0-2) <b>225-823-3</b>	XL (16-18) <b>225-823-7</b>
S (4-6) <b>225-823-4</b>	XXL (18W-20W)
M (8-10) <b>225-823-5</b>	<b>225-823-8</b>
L (12-14) <b>225-823-6</b>	XXXL (22W-24W)
<b>65.00</b>	<b>225-823-9</b>
<b>limited quantities</b>	<b>70.00</b>

\* UPF (Ultraviolet Protection Factor) indicates how much UV radiation a fabric allows to reach the skin through the fabric.



Exterior  
side and  
back  
pockets

Features a soft  
cotton-like hand  
feel matte finish  
and UPF\*40+  
protection

Semi-flare  
hem

# SKECHERS

## NEW

❖ **Skechers® GoDri™ Swift Club Polo**  
Polo features a soft moisture-wicking and quick-drying GoDri™ fabric, basic collar with partial button placket, short sleeves, chafe-free seams for total comfort and a side slit hem. Polyester/spandex. Machine wash and dry.

XS (0-2) **225-824-0**  
S (4-6) **225-824-1**  
M (8-10) **225-824-2**  
L (12-14) **225-824-3**

**57.00**

XL (16-18)  
**225-824-4**  
XXL (18W-20W)  
**225-824-5**  
XXXL (22W-24W)  
**225-824-6**  
**62.00**

Features  
moisture  
wicking,  
quick drying  
and UPF\*40+  
protection

Lace-up style  
with engineered  
knit upper



3 cm heel



Contoured shock-absorbing midsole

## NEW

❖ **Skechers® Squad Air Sweet Encounter**

Cushioned Memory Foam™ insole and a visible airbag midsole. Man-made materials. Half sizes, order one size up.

6M <b>225-675-9</b>	9M <b>225-676-2</b>
7M <b>225-676-0</b>	10M <b>225-676-3</b>
8M <b>225-676-1</b>	11M <b>225-676-4</b>

**100.00**

**limited quantities**

Collar  
tee with  
5-button  
placket



❖ Skechers® BOBS - Be Extra Cute\*

Memory Foam™ cushioned comfort insoles. 1 cm flatform midsoles. Flexible traction outsoles. Machine washable. Man-made materials.

**79.00** each pair  
limited quantities

**Black**

- 6M 225-214-3
- 7M 225-214-4
- 8M 225-214-5
- 9M 225-214-6
- 10M 225-214-7
- 11M 225-214-8

**NEW**

**White**

- 6M 225-675-2
- 7M 225-675-3
- 8M 225-675-4
- 9M 225-675-5
- 10M 225-675-6
- 11M 225-675-7



Decorative knotted-lace front

Soft canvas uppers with frayed details

❖ Skechers® GoRun Consistent™\*

Features mesh and synthetic uppers with stretchable instep straps, responsive ULTRA LIGHT cushioning and Skechers® Air-Cooled Goga Mat™ cushioned insoles. 3 cm heels. Man-made materials.

- 6M 225-216-1
- 7M 225-216-2
- 8M 225-216-3
- 9M 225-216-4
- 10M 225-216-5
- 11M 225-216-6

**100.00**  
limited quantities

\*Half sizes, order one size up.



Slip-on style in lightweight comfort

Flexible traction outsoles

# warm up to easy comfort

Slip-on casual clog design with perforated uppers.



Soft shearling trim and lining



Dual-density outsoles for added stability and support

❖ Skechers® GoWalk 5™ Foamies - Relax\*

Features lightweight responsive ULTRA GO™ cushioning and high-rebound COMFORT PILLAR TECHNOLOGY™ for the ultimate in walking comfort. Man-made materials.

- 6M 225-624-2    9M 225-624-5
- 7M 225-624-3    10M 225-624-6
- 8M 225-624-4    11M 225-624-7

reg. 72.00

**62.00**

limited quantities

\*Half sizes, order one size up.





# playful designs

Show off your fun personality with a variety of patterns and styles.

## NEW

❖ **Sheer Mid Crew Socks**  
Fits shoe sizes 6-10. Cotton/nylon/spandex. Machine wash, dry flat. **225-791-1**  
**6.99 a pair**  
limited quantities



Elegant floral design

Solid grey bands, heels and soles



Gnome and Saint Patrick's Day graphics

## NEW

❖ **Gnome Saint Patrick's Day Socks**  
Grey and green. Fits shoe sizes 6-10. Polyester/cotton/spandex. Machine wash and dry. **225-671-8**  
**6.99 a pair**  
limited quantities



Low-cut socks with sheer and black stripes

## NEW

❖ **Low Cut Sheer Stripe Socks**  
Fits shoe sizes 6-10. Cotton/nylon/polyester/spandex. Machine wash, dry flat. **225-791-2**  
**6.99 a pair**  
limited quantities

## NEW

❖ **Multi-Design Crew Socks**  
White and grey crew socks. Fits shoe sizes 6-10. Polyester/cotton/spandex. Machine wash and dry. **225-791-4**  
**6.99 a pair**  
limited quantities



Intricate jacquard and floral design



Non-binding top band

Cushioned footbed

# non-binding

Provides a comfortable fit and helps support circulation.

## NEW

### ❖ Non-Binding Socks

With anti-Microbial treatment to help prevent bacterial and fungal growth. Fits shoe sizes 6-10. Polyester/cotton/rubber/spandex. Machine wash, hang to dry. White/Orchid 225-795-8 White/Grey 225-795-7 10.99 each pair limited quantities

Seamless toe helps prevent rubbing and blisters

# comfort & style

Low-cut sport socks with a honeycomb design.



Y heel for better fit and heel tab for heel protection

Features arch support and half-cushioned for shock absorption



## NEW

### ❖ Low Cut Sport Sock with Tab - 2-Pack

Fits shoe sizes 6-10. Polyester/spandex. Machine wash and dry. 225-795-9 9.99 pack of 2 limited quantities

## A. ♦ Shaping Tank

Seamless shaping scoop-neck tank. Nylon/spandex. Centre back length: 61 cm on medium; 65 cm on 1X. Hand wash, line dry.

### Black

XS (0-2) **223-878-1**  
S (4-6) **223-878-2**  
M (8-10) **223-878-3**  
L (12-14) **223-878-4**  
XL (16) **223-878-5**

**24.99**

1X (18W-20W) **223-879-1**  
2X (22W-24W) **223-879-2**  
3X (26W-28W) **223-879-3**  
**29.99**

### Beige

XS (0-2) **223-878-6**  
S (4-6) **223-878-7**  
M (8-10) **223-878-8**  
L (12-14) **223-878-9**  
XL (16) **223-879-0**

**24.99**

1X (18W-20W) **223-879-4**  
2X (22W-24W) **223-879-5**  
3X (26W-28W) **223-879-6**  
**29.99**

Available in black and beige

Stretchy fabric with built-in tummy control



### Black

XS (0-2) **225-640-1**  
S (4-6) **225-640-2**  
M (8-10) **225-640-3**  
L (12-14) **225-640-4**  
XL (16) **225-640-5**

**28.99**

1X (18W-20W) **225-640-6**  
2X (22W-24W) **225-640-7**  
3X (26W-28W) **225-640-8**  
**33.99**

BEIGE

BLACK

Available in black and beige



## NEW

## B. ♦ Shaping High Waisted Brief

New jacquard pattern. Seamless, high-waisted shaping with tummy toning panel. Nylon/spandex. Hand wash, line dry.

### Beige

XS (0-2) **225-650-2**  
S (4-6) **225-650-3**  
M (8-10) **225-650-4**  
L (12-14) **225-650-5**  
XL (16) **225-650-6**

**28.99**

1X (18W-20W) **225-650-7**  
2X (22W-24W) **225-650-8**  
3X (26W-28W) **225-650-9**  
**33.99**

### Black

XS (0-2) **223-879-7**  
S (4-6) **223-879-8**  
M (8-10) **223-879-9**  
L (12-14) **223-880-0**  
XL (16) **223-880-1**

**31.99**

1X (18W-20W) **223-880-7**  
2X (22W-24W) **223-880-8**  
3X (26W-28W) **223-880-9**  
**36.99**

BEIGE

BLACK

Available in black and beige



10-PAIR PACK of ankle socks

## ♦ 10-Pair Multi-Pack Ankle Socks

Pack of 10 ankle socks in a variety of solid colours and prints. Fits shoe sizes 6-10. Polyester/spandex. Machine wash and dry. **225-539-7**  
**22.99** the 10-pair pack



Shown: Black

### Black

XS (0-2) **224-710-2**  
S (4-6) **224-710-3**  
M (8-10) **224-710-4**  
L (12-14) **224-710-5**  
XL (16) **224-710-6**

**31.99**

1X (18W-20W) **224-711-2**  
2X (22W-24W) **224-711-3**  
3X (26W-28W) **224-711-4**  
**36.99**

BEIGE

BLACK

Available in black and beige

## C. ♦ Racerback Comfort Support Bra

Sleek, smooth and invisible under clothes. Adjustable straps. Wire-free cups with removable pads. Nylon/spandex. Machine wash and dry.

### Beige

XS (0-2) **224-710-7**  
S (4-6) **224-710-8**  
M (8-10) **224-710-9**  
L (12-14) **224-711-0**  
XL (16) **224-711-1**

**31.99**

1X (18W-20W) **224-711-5**  
2X (22W-24W) **224-711-6**  
3X (26W-28W) **224-711-7**  
**36.99**

## D. ♦ High Waist Thigh Shaper

Seamless thigh-shaping shorts. Double-layer panel for tummy control. Prevents chafing. Nylon/spandex. Inseam 39 cm on medium; 43 cm on 1X. Hand wash, line dry.

### Beige

XS (0-2) **223-880-2**  
S (4-6) **223-880-3**  
M (8-10) **223-880-4**  
L (12-14) **223-880-5**  
XL (16) **223-880-6**

**31.99**

1X (18W-20W) **223-881-0**  
2X (22W-24W) **223-881-1**  
3X (26W-28W) **223-881-2**  
**36.99**

Detachable, adjustable shoulder strap with max drop of 66 cm L

❖ **Bench® Weekender Bag**

Khaki coloured. 3 interior pockets (one zip pocket and two open slash pockets). Double handles: 8 cm L. 44 cm L x 23 cm D x 37 cm H. Polyester/polyvinyl chloride/PET/polypropylene/zinc. **225-795-5** reg. 95.00

**76.00**

limited quantities



# totally awesome

We've got something for every occasion - weekend get-away, city touring or everyday use.

Double handle, 28 cm L drop

❖ **Bench® Quilted Satchel Tote Bag**

Black. 3 interior pockets (one zip pocket and two open slash pockets). 39 cm L x 18 cm W x 36 cm H. Polyester/polyethylene/polyurethane/PET/polypropylene. **225-795-2** reg. 75.00

**56.00**

limited quantities



One shoulder sling back bag



❖ **Bench® Unisex Sling Bag**

Khaki coloured bag features two interior pockets (one zip and one open slash pockets). Mesh side pocket with elastic. Padded shoulder strap: 131 cm L max. Padded mesh back panel for comfort. 23 cm L x 8 cm D x 36 cm H. Polyester/polyvinyl chloride/polyethylene/PET/polypropylene/plastic. **225-795-6**

**60.00**

limited quantities

**Bench.**

❖ **Bench® Quilted Cross Body Bag**

Grey. 3 interior pockets (one zip pocket and two open slash pockets). 27 cm L x 10 cm W x 28 cm H. Polyester/polyethylene/polyurethane/PET/polypropylene/iron. **225-795-3** reg. 55.00

**45.00**

limited quantities



❖ **Bench® Slim Cell Phone Case**

11 cm L x 1 cm D x 18 cm H. Polyurethane/polyester. Adjustable shoulder strap: max drop length, 71 cm. Polyurethane/polyester.

Black **225-796-4**

Totally Taupe **225-795-4**

reg. 45.00

**36.00** each

limited quantities



# HYGIENIC POWER

Look, smell, be clean... live hygienic.



❖ **Laundry Bar & Stain Remover**

With baking soda to help prevent odours for a deeper clean. Perfect for pretreating or targeted spot treating, hand washing, and travel. Safe for skin with moisturizing ingredients. 180 g  
**224-105-7**  
**3.49**

❖ **Color Booster & Stain Remover**

Makes whites bright, boosts and brightens colours and eliminates stains and odours. With peroxide and oxygen-based bleach. 1.4 litres  
**224-105-8**  
**13.99**

❖ **Fabric Softener**

3X concentrated. Softens, freshens, and protects clothes. Long-lasting rosewater and jasmine scent. Made with plant-based surfactants. Microplastic-free. Safe for skin and the environment. 50 loads. 1 litre  
**224-105-9**  
**8.99**

❖ **Laundry Detergent**

Removes dirt you can't see. Uses a stain fighting solution to brighten and whiten and baking soda to help prevent odours for a deeper clean. 1 litre. **224-105-6**  
**9.99**

\*Based on regular loads for a standard machine.

# laundry day made SIMPLE

100% water-soluble sheet detergent removes stains with powerful enzymes.

❖ **Fresh Fiji Sheet Detergent**

With baking soda and natural fragrance oils. Works in all washers. For machine wash fabrics only. Sheets can be cut depending on your laundry load. 30 fast-dissolving sheets, each 23 x 20 cm

**Lemon & Lavender Scent 222-440-7**

**Lavender Scent 223-206-7**

reg. 20.99

**15.99** each pack

- Liquid-less
- Ultra-concentrated
- Lightweight and portable
- Less packaging, more eco-friendly!



Up to 60 loads no measuring!



## HOMESTAR

### ❖ Multi-Purpose Cleaner - Refill Size

Bleach-free, triple-action power cleaner for the kitchen and beyond. With citric acid, orange oil and baking soda to remove stubborn water stains. Natural citrus scent. For use on nonporous surfaces only. 900 ml **224-106-0**  
**12.99**



### ❖ Bathroom Cleaner

Fights tough soap scum, limescale, calcium and grime. Triple-action low-pH formula safely breaks down and removes messes. 750 ml **222-708-9**  
**12.99**



### ❖ Moisture Absorber

Absorbs excess moisture and prevents mildew and musty odours. 3 containers, 275 g each. **223-322-8**  
**8.99 the pack**



### ❖ Foaming Toilet Bowl Cleaner

Fights toilet rings and stains. Convenient pouch dispenser. Use every two weeks. 60 g each pouch. **222-708-8**  
**13.99 pack of 5**



PACK OF 5

### ❖ Floor Cleaner

Nozzle provides targeted application to apply directly to floor. Dries quickly for a streak-free shine. Fresh lavender scent. 750 ml **224-690-1**  
**11.99**



No need to dilute or rinse

**HOMESTAR** powerful solutions that keep your home fresh and clean!

# POWERFUL GRIME-FIGHTERS

Powerful cleaning duo



### ❖ Multi-Purpose Cleaner

Bleach-free, triple-action power cleaner for the kitchen and beyond. With citric acid, orange oil and baking soda to remove stubborn water stains. Natural citrus scent. For use on nonporous surfaces only. 500 ml **223-134-0**  
**11.99 or...**

### ❖ Rangehood and Kitchen Degreaser

Double-solvent solution blend for hard-to-remove grease stains on rangehoods, stovetops, BBQ grills and more! Just spray and watch foaming bubbles go to work, then simply rinse. External oven use only. 500 ml **225-903-8**  
**15.99 or...**

896-463-2  
**BOTH FOR 21.99**  
27.98 value



Long-lasting baby powder scent

Long-lasting baby powder scent

❖ **Sirius Groom Pet Grooming Mist**  
Softens, soothes and hydrates your pet's skin and coat for instant freshness. Perfect for in-between washes. Moisturizing formula with centella asiatica, rosemary, oatmeal and Pro-Vitamin B5. 150 ml **224-716-9**  
**13.99**

❖ **Sirius Groom Odor Eliminator**  
Removes the toughest pet odours from fabrics and carpets. Leaves a light and fresh baby powder scent. Nature-derived ingredients including rice and barley to neutralize and absorb odours. For fabric and carpet use only; do not spray on pets. 400 ml **223-087-4**  
**13.99**

❖ **Sirius Groom Shampoo for Dogs**  
Formulated with oatmeal to help soothe skin. pH-balanced formula. Long-lasting scents. Nature-derived ingredients. 480 ml  
**Lovely Berry 223-087-2**  
**Baby Powder 223-087-3**  
**16.99 each or...**

❖ **Sirius Groom Conditioner for Dogs**  
Rinse-off conditioner leaves coat soft and shiny. Soothes, hydrates and helps to alleviate itchiness. With aloe vera, vitamin E and oatmeal extract. Free from sulfates, colourants and silicones. Cruelty-free. 480 ml  
**Lovely Berry 224-716-5**  
**Baby Powder 224-716-6**  
**16.99 each or...**



**Lovely Berry Duo**  
896-419-6

**Baby Powder Duo**  
896-419-7

**EACH DUO**  
**24.00**  
33.98 value

# LUXURIOUS BATH OILS



REGULAR  
SIZE  
500 ML



**Skin So Soft Bath Oil**  
500 ml  
Soft & Sensual  
107-743-7  
Comforting Shea  
121-648-7  
reg. 34.00  
21.99 each

BONUS  
SIZE  
739 ML



**Skin So Soft  
Bath Oil -  
Bonus Size**  
739 ml  
Radiant Moisture  
107-681-1  
Soft & Sensual  
107-736-1  
reg. 42.00  
26.99 each

**Skin So Soft  
Original  
Bath Oil Spray**  
Locks in moisture.  
150 ml 220-916-7  
reg. 20.00  
11.99

SPRAY  
150 ML





# CLEANSE & SOFTEN

With nourishing formulas.

### Gelled Body Oil

Provides instant and lasting hydration. Dries to a silky finish. 200 ml

**Soft & Sensual**  
111-777-4

**Original** 107-681-4  
reg. 19.00  
10.99 each or...

ANY 2 FOR  
**16.99**  
To get the 2 FOR price,  
order in multiples of 2.



### Beauty Bar Soap

Suitable for daily use on face, body and hands. 90 g

**Soft & Sensual** 224-348-2

**Original** 224-348-1  
reg. 6.50  
4.99  
each or...

ANY 2 FOR  
**6.99**  
To get the 2 FOR price,  
order in multiples of 2.



BONUS  
SIZE  
1 LITRE



### Soft & Sensual Body Lotion Bonus Size

With luxurious jojoba oil. 1 litre  
107-765-9  
reg. 28.00  
19.99

### Original Body Lotion

With nourishing argan oil. 350 ml  
107-594-7  
reg. 16.00  
9.99

# NUTRIENT-RICH COCONUT OIL

With enriching Coconut Oil so precious, they call it “liquid gold.” Packed with vitamin E, it helps to visibly restore skin’s lustre and keep it feeling irresistibly soft.

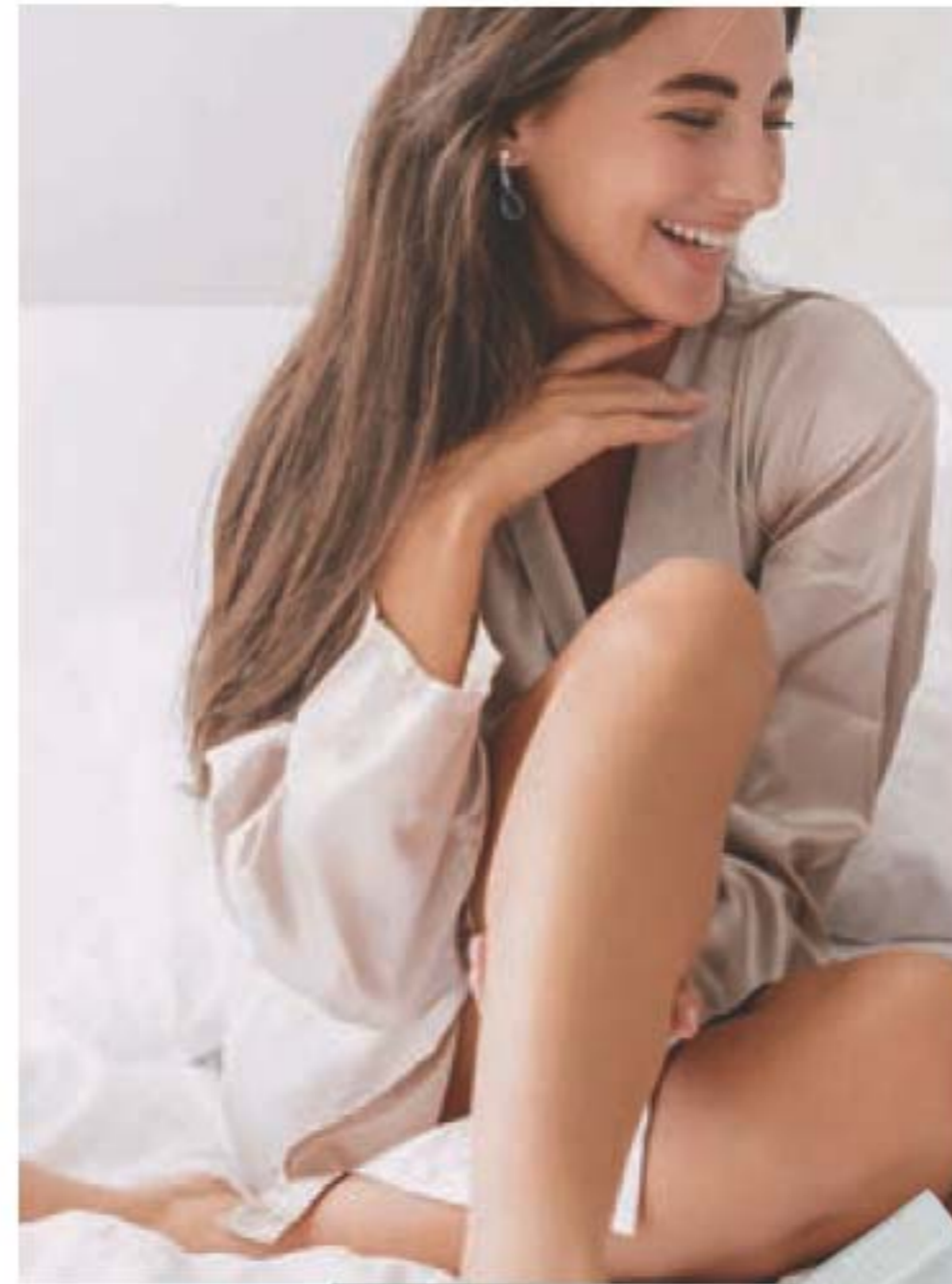
**Body Soufflé**  
Airy, coconut water-infused soufflé leaves skin feeling soft all day. 200 ml  
221-206-6  
reg. 24.00  
14.99

**Milk Lotion**  
With skin-softening coconut milk. 350 ml  
221-206-4  
reg. 24.00  
14.99

Rich and creamy yet light and airy



Light tropical scent



# EASY HAIR REMOVAL



With meadowfoam oil and aloe. Fragrance-free.

**Skin So Soft Fresh & Smooth Sensitive Skin**

**Facial Hair Removal Cream**  
30 ml  
107-728-2  
reg. 14.00  
7.99

**Body Hair Removal Cream**  
125 ml  
107-728-5  
reg. 14.00  
7.99



**FOR EXTRA DRY SKIN**

- Suitable for sensitive skin
- Dermatologically-tested and hypoallergenic

1 LITRE  
body  
lotion

**Intensive Healing & Repair Body Lotion**  
Clinically shown to provide intense 72-hour moisturization and help repair extra dry skin. Lightly-fragranced. 200 ml  
**225-807-3**  
reg. 12.00  
**9.99**

**Daily Skin Defense Body Lotion - Bonus Size**  
Infused with vitamins A, C and B5. 1 litre  
**101-624-0**  
reg. 28.00  
**19.99**

**Intensive Healing & Repair Extra Strength Cream**  
With regular use, relieves the most severe dry skin conditions. Fragrance-free. 150 g  
**225-807-4**  
reg. 12.00  
**7.99**



MOISTURE THERAPY

# SERIOUSLY DRY SKIN?

No worries, we've got serious treatments!

## RELAX & DE-STRESS

Infused with bergamot, jasmine and sandalwood.

### Tranquil Moments Collection

Uplifting scent will melt your worries away.

**Room Spray**  
Spray into the air around your home. 100 ml  
**224-362-6**  
reg. 14.00  
**6.99**

**Bath & Shower Gel**  
Cleanses and conditions skin. 150 ml **111-849**  
reg. 12.00  
**5.99**



Set of 2 oils



## Aromatherapy ESSENTIAL OILS

**Minding My Mood**  
**4-in-1 Essential Oil Blends**  
Each, 50 ml **221-839-6**  
Includes:

**ENERGIZE OIL**  
Feel refreshed and focused with lively mandarin and stimulating ylang-ylang.

**CALM OIL**  
Find your inner bliss with comforting lavender and soothing star anise.

reg. 40.00  
**35.99** the set

## VÉILMENT BODY CARE

Nourish with naturally-derived ingredients that provide long-lasting moisture for radiant, youthful-looking skin.

**Macadamia Oil Revitalizing**  
Rich in vitamins and omega acids for luxuriously nourished, soft skin and antioxidants to help skin look radiantly youthful.

**Hemp Seed Oil Ultra-Nourishing**  
A naturally derived oil enriched with omega-3-6-9 fatty acids and vitamin E.

**Body Mousse**  
A soft, foamy mousse that deeply nourishes skin with pampering macadamia nut oil. So lightweight, it quickly melts into the skin for long-lasting moisturization. 190 g **221-483-5**  
reg. 34.00  
**27.00** or...

**Dry Body Oil**  
Helps deeply nourish and hydrate dry skin to keep it looking healthy. 150 ml **222-338-6**  
reg. 49.00  
**41.00** or...



**CHOOSE ANY 2 FOR 40.00**

**PAGE 183**

To get the 2 FOR price, order in multiples of 2.

**VÉILMENT NATURAL SPA** indulge in luxury

**Dead Sea Salt Body Scrub & Cleanser**

Israeli Dead Sea salt.  
400 ml **221-902-8**  
reg. 21.00  
**18.00**



**Bamboo Charcoal Body Scrub & Cleanser**

Korean bamboo charcoal, Israeli Dead Sea salt, apricot seed and spruce.  
400 ml  
**222-443-6**  
reg. 33.00  
**25.00**



**Himalaya Pink Salt Body Scrub & Cleanser**

Formulated with mineral-rich Himalayan pink salt. Calming sage scent.  
400 ml  
**221-903-4**  
reg. 21.00  
**18.00**



**VÉILMENT** beauty bars

**Care Moisturizing Bar Soap**

Plant-based bar soap derived from olive oil and infused with coconut oil. 80 g **222-694-9**  
reg. 3.50  
**2.79**

Creamy coconut scent



**Care Soothing & Relaxing Bar Soap**

Enriched with comforting lavender oil extract to help calm and soothe. Each, 140 g **223-953-7**  
reg. 12.00  
**9.00** pack of 3

Comforting lavender scent



**Natural Spa Himalaya Pink Salt Exfoliating Soap**

Mineral-rich Himalayan pink salt, walnut shell, apricot seed and cranberry powder. 150 g  
**222-462-0**  
reg. 12.00  
**8.50** Calming sage scent



**ELLE**  
QUEBEC & CANADA  
2022 BEAUTY  
GRAND PRIX  
BEAUTE 2022

**Black Rose Body Scrub & Cleanser**

Formulated with French rose and apricot seed powder. Aromatic black rose scent.  
400 ml **221-902-1**  
reg. 21.00  
**18.00**

**HEXASHIELD** first-aid essentials

Back and joint pain

**Pain Relief Cream for Muscles, Back and Joints**  
 Temporary relief of aches and pains of muscle and joints associated with backaches, lumbagos, strains and sprains. Medicinal ingredients: Methyl Salicylate, 30%, Menthol, 10%, Camphor, 4%. 56.7 g **223-101-1** reg. 13.99 **11.49** or...

Itch relief

**Anti-Itch Cream**  
 For temporary relief of minor irritations due to eczema, psoriasis and insect bites. Suitable for sensitive skin. Medicinal ingredient: Hydrocortisone, 0.5%. 56.7 g **223-102-7** reg. 13.99 **11.49** or...

For cuts, scrapes and burns

**Poly Antibiotic Ointment**  
 Helps prevent infection in minor cuts, scrapes and burns. Active ingredients: Bacitracin and Polymyxin B Sulfate. 28 g **223-103-0** reg. 19.99 **15.49** or...

Deep and potent pain relief

**Arthritis Pain Relief Cream**  
 Temporarily relieves aches and pains of muscles and joints associated with arthritis. Odour-free. Medicinal ingredient: Capsaicin, 0.107%. 42.5 g **223-102-6** reg. 19.99 **15.49** or...



THE WELL-STOCKED  
**MEDICINE  
 CABINET**

with over-the-counter  
 first-aid essentials

**CHOOSE  
 ANY 3 FOR  
 30.00**

**PAGES 186-187**

To get the 3 FOR price,  
 order in multiples of 3.

**PERIOE** oral care

**Himalaya Pink Salt Pumping Toothpaste Ice Mint**

Creamy paste in easy-to-use pump. 285 g  
**222-245-6**  
 reg. 17.00  
**14.00**



**Himalaya Pink Salt Toothpaste Tube Ice Mint**

Pink gel paste with aloe vera essence beads. 100 g  
**222-245-5**  
 reg. 9.00  
**7.00**



**PERIOE** oral care

Fluoride toothpaste with charcoal.

**Whitening Essentials Fluoride Toothpaste with Charcoal White - Fresh Mint**

With fluoride to help prevent cavities, and green mint for a natural fresh feeling. 156 g  
**222-710-2**  
 reg. 13.00  
**11.00**

**Whitening Essentials Fluoride Toothpaste - Original Cool Mint**

Anti-cavity formula helps to whiten teeth and to remove surface stains. 156 g  
**222-710-1**  
 reg. 13.00  
**11.00**



**Thera-White Charcoal Cool Mint 2-in-1 Whitening Toothpaste**

With activated charcoal. Booster gel activates whitening toothpaste to remove stains and whiten teeth faster and more effectively than with either alone. Fluoride-free. Innovative dual system. 140 g  
**222-431-6**  
 reg. 42.00  
**35.99**

Minty flavour and colour-coded brushes.

**White Action Toothpaste - Original Mint**

Fluoride-free formula with baking soda effectively cleans and whitens teeth, and naturally refreshes breath. 160 g  
**222-694-5**  
 reg. 6.00  
**4.19**

**White Action Toothbrush**

Effectively removes plaque and surface stains. Easy-grip rubber pads. Round-edge medium bristles for a gentle clean and healthy mouth.

Green **222-711-7**  
 Blue **222-694-7**  
 reg. 3.00  
**2.49** each



for a brighter smile  
**ON THE GO!**

With hydrogen peroxide, helps to instantly remove stains from food, coffee, wine and lipstick.

**Thera-White Teeth Whitening Pen**

Clear gel with hydrogen peroxide and easy silicone tip. 4 ml  
**222-825-6**  
 reg. 37.00  
**27.99**



ELASTINE BOTANICALS

# LUSTROUS HAIR

Infused with revitalizing babassu seed oil, chamomile flower water, and lemon chestnut extract. pH balanced.



### Cherry Blossom & Hyaluronic Acid Moisturizing

Moisturize dry, damaged hair with our hyaluronic acid-infused formula as thirsty strands drink it up. 200 ml Shampoo **225-540-0** Conditioner **225-540-2** reg. 8.00 **6.29** each

### Rosemary & Sea Salt Volumizing

With rosemary to help promote thicker and healthier hair, and sea salt to add body. 200 ml Shampoo **225-540-3** Conditioner **225-540-4** reg. 8.00 **6.29** each



## FRIZZY HAIR?

Enhances hair's natural lustre and smoothness.



**NEW**

### Argan & Castor Anti-Frizz

With nourishing ingredients, helps protect hair from damage and breakage, and enhances hair's natural lustre and smoothness. 200 ml Shampoo **225-509-9** Conditioner **225-510-6** reg. 8.00 **6.29** each



# ELASTINE PROPOLITHERA CATCH THE BUZZ

Elastine PropoliThera is formulated to add new life to your hair. Free of sulfates and parabens, it infuses every strand with a healthy looking body and shine.

**A. Hair Mask**  
Enriched with nutrients to help deeply nourish hair and mend damaged split ends. 300 ml  
**222-245-3**  
reg. 26.00  
**22.49** or...

**B. Hair Oil Serum**  
Helps to strengthen, protect, moisturize and smooth hair, and to add shine, while styling. 170 ml  
**222-245-4**  
reg. 26.00  
**22.49** or...

**C. Damage Repair**  
Helps repair and soften damaged hair so it appears smooth and manageable. 500 ml  
**Shampoo 222-245-1**  
**Conditioner 222-245-2**  
reg. 26.00  
**22.49** each or...

**D. Volumizing**  
Adds weightless volume and enhances texture to make hair look fuller, thicker and stronger. 500 ml  
**Shampoo 222-244-8**  
**Conditioner 222-244-9**  
reg. 26.00  
**22.49** each or...



**CHOOSE ANY 2 FOR 35.00**

→

**PAGES 192-195**

To get the 2 FOR price, order in multiples of 2

# ELASTINE PROPOLITHERA STYLING BOOSTERS

Sulfate/paraben-free. Nourish dry, thin and weak hair with the goodness of honey, vitamin-enriched propolis extract and royal jelly.



**A. Hair Deep Conditioning Treatment Caps**  
Nourishing deep conditioning treatment mask replenishes moisture in one cap application. Use as needed. Two caps included.  
**224-349-0**  
reg. 26.00  
**22.49**  
the set of 2 or...

**B. Volume Spray**  
Adds weightless volume and lustrous texture to thinning hair. 200 ml  
**222-551-3**  
reg. 27.00  
**21.00** or...

**C. Leave-In Conditioner**  
Hydrates and nourishes dry hair, infusing it with rich lustre. 240 ml  
**222-551-1**  
reg. 27.00  
**21.00** or...

**D. Rejuvenating Serum Treatment**  
Upon contact with water, nutrient-rich liquid visibly transforms into a creamy formula. 230 ml  
**222-627-0**  
reg. 31.00  
**26.00** or...

**E. Curl Cream**  
Rich hydration for bouncy, defined curls. Reduces frizz for a smooth, healthy-looking shine. 150 ml  
**222-551-0**  
reg. 27.00  
**21.00** or...

**F. Rejuvenating Volumizing Mousse**  
Enhances elasticity and minimizes breakage for a flexible hold with natural-looking, long-lasting style and shine. Protects against heat, so it's perfect for blow-drying. 142 g  
**222-551-4**  
reg. 27.00  
**21.00** or...

**CHOOSE ANY 2 FOR 35.00**

←  
**PAGES 192-195**  
To get the 2 FOR price, order in multiples of 2

# LUXURIOUSLY SCENTED

## 2-in-1 shampoo & conditioner

Moisturizes hair while controlling oil-derived odours.

**Elastine Perfume 2-in-1 Shampoo & Conditioner**  
Moisturizes hair while controlling oil-derived odours. Paraben/sulfate-free. Suitable for daily use. 250 ml reg. 23.00

**17.99 each**

**Love Me**  
Jasmine and ylang-ylang.  
**224-812-2**

**Fresh Citrus**  
Lime, mandarin and basil.  
**224-813-2**

**Pure Breeze**  
White rose and Bulgarian rose.  
**224-812-3**



# BEE-UTIFUL CURLS!

Helps care for curly hair to create silky, super-lustrous and shiny curls even after the first use. Plus 4X anti-frizz oil complex.

**Elastine PropoliThera Bee Curly**  
**Shampoo** 500 ml **224-348-5**  
**Conditioner** 500 ml **224-348-6**  
**Serum** 150 ml **224-348-9**  
reg. 41.00  
**34.99 each**

# PROTECT & HYDRATE

with argan oil, to help nourish and smooth dry damaged hair.

**Elastine Moisture Essentials Shine**  
*ceramide + argan oil*  
 Argan oil-infused formula, with vitamins and antioxidants. 375 ml Shampoo **224-076-1** Conditioner **224-076-2** reg. 12.50 **9.99** each or...

**Elastine Moisture Essentials Shine Hair Oil Serum**  
*Moroccan argan oil*  
 Helps to replenish dull, dry and weak hair, tames frizz and seals split ends. 75 ml **224-076-3** reg. 12.50 **9.99** or...

**Elastine Moisture Essentials Volume**  
*ceramide + biotin*  
 Biotin-infused formula helps dry, damaged hair look and feel thicker, fuller and healthier. 375 ml Shampoo **224-075-9** Conditioner **224-076-0** reg. 12.50 **9.99** each or...

**Advance Techniques 360 Nourish Leave-In Treatment with Moroccan Argan Oil**  
 Formulated with argan oil, provitamin B5 and vitamin E, it helps to nourish and smooth, dry, damaged hair. 60 ml **119-335-1** reg. 22.50 **14.99** or...



**CHOOSE ANY 2 FOR 15.00**  
 PAGES 198-199  
 To get the 2 FOR price, order in multiples of 2

# GET STYLING!

**BioSilk® Silk Therapy®  
Leave-In Treatment**

Tames frizz and flyaways and leaves hair silky smooth with reflective shine. For all hair types. 167 ml **222-387-5**  
reg. 48.00  
**39.00**

**CHI® Styling Cream Gel**

Light-hold, non-flaking formula. Enriched with silk to strengthen hair. 177 ml **222-521-4**  
reg. 29.00  
**24.00**

**CHI® Enviro 54® Natural Hold  
Hair Spray**

Lightweight and fast-drying with no build-up. Thermal protectant ideal for blow drying. 284 g **222-539-3**  
reg. 38.00  
**31.00**



❖ **CHI® Volcanic  
Lava Ceramic Pro  
Spin 'n' Curl**

2.5 cm (1") pro automatic rotating curling device. Preset temperature controls with adjustable timers and LED screen display, for all hair types. 30 cm L. Dual voltage for travel. 3.35 metre swivel cord. **222-338-1**  
reg. 210.00  
**189.00**



❖ **CHI® Advanced  
Ionic Compact  
Hair Dryer**

1875-watt ion generator emits negative ions to reduce drying time. Adjustable heat and air-speed settings. Lightweight and compact design. Removable filter. Includes air nozzle concentrator and diffuser. 1.9 metre cord. **222-337-9**  
reg. 175.00  
**159.00**



**CHI® REVIVE KERATIN**

# BONDING COLLECTION

**Restoring  
Shampoo**

Cleanses, moisturizes and protects against split ends and frizz. 355 ml  
**224-991-6**  
reg. 35.00  
**27.99**

**Restoring  
Conditioner**

Helps restore dry, damaged and brittle hair. 355 ml  
**224-991-7**  
reg. 35.00  
**27.99**



**Protecting Serum**

Apply to damp or dry hair for smoothness and shine as a finisher and UV protectant. 88 ml **224-991-8**  
reg. 59.00  
**48.99**

# STRAIGHTEN LIKE A PRO!

Smooth and straighten in one pass of the brush!



Ionic  
straightening  
brush with  
30 second  
instant heat

- Diamond Brilliance™ leaves hair smooth and frizz free
- Ionic technology helps protect hair from heat damage
- 3 heat settings



## NEW

### ❖ Infinity Pro by Conair® Diamond Infused Hot Paddle Brush

Combination of nylon, silicone and diamond ceramic bristles gently guide through hair for silky results and added shine. Includes heat mat. Professional swivel line cord. Electrical.

226-230-5

49.99

limited quantities

**CONAIR®**



# STYLING BLOW OUT

## Mid-size dryer

- Features two heat settings and two speeds for styling control
- Concentrator attachment to focus air
- Removable filter and convenient hang ring for easy storage



2 heat settings  
2 speeds

Concentrator

### ❖ Conair® 1875 Watt Hair Dryer

Powerful enough to dry hair fast, and compact enough to take on-the-go. This blow dryer combines performance with convenience. 1875 watts. 1.5 metre (5 ft) power cord. Electrical. **225-807-0**

**39.99**

limited quantities

Out-of-the way hanging ring

**CONAIR®**

**Vented Circle Brush**

Specially designed vent ports work to channel airflow when used with a blow dryer. ABS/nylon. 23 x 10 x 3 cm

223-973-6

10.99

limited quantities



Anti-slip handle

Flexible anti-snap bristles

**Vented Hair Brush**

Speeds up drying time. Anti-slip handle. ABS/nylon/ethoxyline resin. 23 x 7 x 3 cm

225-084-3

10.99

limited quantities



Vent ports channel airflow when used with blow dryer

**Marble Detangling Brush**

ABS/thermoplastic polyester elastomer. 18 x 7 x 3 cm

223-251-1

8.99

limited quantities



Modern marble design



Ergonomic shape fits perfectly in your hand

Reduces blow-drying time

**White Hair Towel**

Tapered design fits most. Terylene/chinlon. Machine wash, hang to dry. 65 x 28 cm at widest point.

225-506-9

12.99

limited quantities



**Lightweight Hair Scissors**

Trim split ends and bangs between salon appointments. Stainless steel. 17 cm L.

224-646-0

17.99

limited quantities



Adjustable screw allows for tension control

Ergonomic offset handle for comfort

**Silicone Scalp Massager**

Use while shampooing for a gentle massage or to distribute treatments through the hair. Polystyrene/TPR. 10 x 8 x 7 cm

222-672-4

7.99

limited quantities



Ergonomic handle

Flexible nubs provide a stimulating scalp massage

**KEEP HAIR DRY**

with a retro style shower cap!

**NEW**

**Pink Polka Dot Shower Cap**

One size fits most. PEVA/polyester/rubber. Wipe clean with damp cloth.

225-084-5

4.99

limited quantities

Bouffant-sized for long or short hair

Protects your hairstyle







# DISCOVER THE BEST IN FOOT CARE

Your feet deserve to be taken care of!

## FOOT WORKS hard-working formulas for hard-working feet

**Lavender Softening Balm**  
 With vitamin E, jojoba oil, cocoa butter and shea butter. 50 g **116-648-4**  
 reg. 10.00  
**6.99 or...**

**Intensive Moisture Foot Cream**  
 Gentle, mild and suitable for sensitive skin. 75 ml **116-647-9**  
 reg. 10.00  
**6.99 or...**

**Overnight Renewing Cream**  
 Conditions while you sleep. With jojoba oil. 100 ml **116-647-7**  
 reg. 13.00  
**8.99 or...**

**Intensive Callus Cream**  
 In just 2 weeks, see a dramatic improvement. 100 ml **117-663-5**  
 reg. 13.00  
**8.99 or...**

**Antifungal Spray for Athlete's Foot**  
 Helps relieve itching and burning of athlete's foot and controls odours. 100 ml **223-885-4**  
 reg. 13.00  
**8.99 or...**

**Arthritis Achy Foot & Muscle Cream**  
 Provides warming pain relief. Contains glucosamine and chondroitin. 75 ml **117-059-3**  
 reg. 10.00  
**6.99 or...**



**CHOOSE ANY 2 FOR 12.99**  
**PAGES 208-209**  
 To get the 2 FOR price, order in multiples of 2.

# STEP UP YOUR FOOT CARE



Effectively removes dry and hard skin on the ball of the foot.

**Slim Foot Foot File**  
Polystyrene/sand paper/silicone.  
19 x 4 cm  
**225-664-1**  
**7.99**  
limited quantities



Silicone loop for hanging

Coarse file easily removes rough calluses

Stainless steel micro-file effortlessly removes rough calluses.

**Callus Remover**  
ABS/rubber/stainless steel. 27 x 7 cm  
**222-621-7**  
**12.99**  
limited quantities



Long ergonomic handle

Unique curve and wide surface make this tool easy to use

Do-it-yourself pedicure essential with four features in one tool!

**Pedicure Tool**  
Tool features: fine grain file, metal file, brush and pumice stone. Plastic.  
8 x 4 x 4 cm **102-612-1**  
reg. 16.00  
**10.99**



Compact kit for perfect pedis!

**Pedicure Kit**  
Kit features: nail clippers, toenail clippers, nail file, nail scissors and cuticle pusher. Metal/man-made materials. Case, 9 x 12 cm **441-304**  
reg. 16.00  
**10.99** the kit



Stainless steel toenail clipper with chevron design.

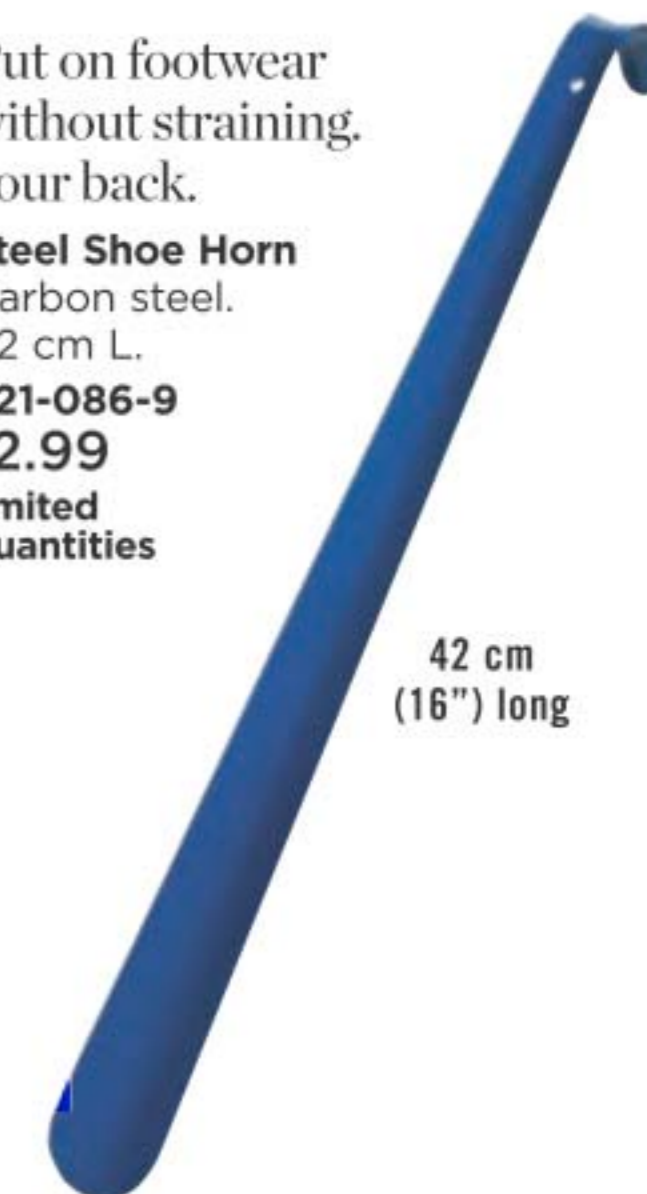
**Chevron Grip Toenail Clipper**  
8 cm L. Stainless steel.  
**224-070-1**  
**6.99**  
limited quantities



Sharp curved blades for precision clipping

Put on footwear without straining your back.

**Steel Shoe Horn**  
Carbon steel.  
42 cm L.  
**221-086-9**  
**12.99**  
limited quantities



42 cm (16") long

# GIVE YOUR LIPS SOME TLC!

Lip softeners moisturize to help prevent chapping.



**Lip Balms**  
Each, 4 g

**Véilment Care**

A. Cherry (tinted)  
222-937-8

B. Coconut (with coconut oil)  
223-132-1

C. Strawberry (tinted)  
222-937-9

D. Aloe (with aloe extract; grape-flavoured)  
223-132-2

**Moisture Therapy**

E. Intensive Healing & Repair Moisturizing Lip Treatment Stick  
221-985-3

F. Avon Sun SPF 15  
Moisturize with soothing aloe.  
224-362-7

**Flavor Savers**

G. Vanilla 221-971-9  
H. Strawberry 221-971-7

I. Melon 221-971-8

reg. 3.00

1.99 each or...

**Véilment Hemp Seed Oil Ultra Nourishing Lip Balm**

J. Red (Tinted)  
222-938-0

K. Clear 222-938-1  
reg. 3.50  
2.49 each or...

**Skin So Soft**

L. Original  
222-944-2

M. Supreme Nourishment Tropical Coconut  
222-944-3

**fmg Flavor Savers**

N. Lemon  
224-003-9

O. Pomegranate  
224-004-0

P. Dew Kiss Lip Dew  
221-971-2

reg. 3.00

1.99 each or...



**CHOOSE ANY 5 FOR 6.00**  
PAGES 212-213  
To get the 5 FOR price, order in multiples of 5.

**Skin So Soft Hand Cream**  
 100 ml  
 Radiant Moisture **107-728-7**  
 Comforting Shea **121-649-0**  
 reg. 7.00  
**3.99 or...**

**Moisture Therapy Hand Cream**  
 Provides rich moisture to to dry hands and cuticles. 125 ml  
 Calming Relief **101-614-8**  
 Daily Skin Defense **101-614-9**  
 Intensive Healing & Repair  
**101-615-3**  
 reg. 9.00  
**3.99 or...**

**Avon Care Silicone Glove Protective Hand Cream**  
 100 ml **288-210**  
 reg. 9.00  
**3.99 or...**



# SOOTHE & REFRESH

Give your skin the love it needs with soothing hand creams and refreshing shower gels.

**Senses Hydrating Shower Gel**  
 150 ml  
 Pomegranate & Mango **108-471-4**  
 Vanilla **108-470-6**  
 Cherry Blossom **108-425-2**  
 Cucumber & Melon **108-427-5**  
 reg. 9.00  
**5.99 each or...**

**Skin So Soft Shower Gel**  
 150 ml  
 Original **107-681-0**  
 Soft & Sensual **107-743-5**  
 reg. 12.00  
**5.99 each or...**

**CHOOSE ANY 2 FOR 7.00**

**PAGES 214-215**

To get the 2 FOR price, order in multiples of 2.

## THE FACE SHOP & AVON CARE

### Avon Care Rich Moisture Comforting Nourishing Cream

Designed for the gentle skin on your face. With soybean to soften and smooth dry skin. 150 ml **222-387-4** reg. 10.00 **8.99**



### The Face Shop Rich Hand V Special Care Hand Mask

Coated with nourishing lotion that contains sunflower seed oil and urea, leaving dry hands feeling smooth and supple. Contains 2 single-use gloves - 1 pair. **223-093-4** reg. 6.00 **4.50 THE PAIR**



2 single-use gloves - 1 pair

### The Face Shop Smile Foot Mask

Contains highly moisturizing urea, shea butter and collagen, plus peppermint oil for a refreshing sensation. Perfect for tired feet. Contains 2 single-use foot masks - 1 pair. **223-093-1** reg. 6.99 **5.99**

Contains powerful, natural moisturizing ingredients

2 single-use foot masks - 1 pair



### The Face Shop Smile Foot Exfoliating Cream

A unique 2-in-1 daily foot exfoliating cream that instantly removes dead skin cells and delivers a soothing effect. This gentle formula contains urea, a natural moisturizing ingredient, which leaves feet feeling soft and hydrated. Wipe off with towel after use. 120 ml **223-093-0** reg. 17.99 **14.99**

Remove dead skin cells without having to rinse



## THE FACE SHOP



### The Solution Advanced Face Masks

With patented amino-acid peels, which help support surface-skin turnover for fast absorption of other concentrated ingredients. 1 single-use sheet mask. reg. 3.50 **3.00 each**

#### Brightening

With pearl powder for a healthy-looking, luminescent glow. **225-126-9**

#### Pore Care

With tannic acid, a natural astringent that helps reduce shine and shrink the look of pores. **225-126-7**

#### Hydrating

With hyaluronic acid, which holds 1000 times its weight in water to help skin look youthfully plumped and baby-soft. **225-126-8**

#### Firming

With marine (hydrolyzed) collagen, helps reduce the appearance of wrinkles and visibly restore firmness and radiance. **225-126-1**

#### Nourishing

With antioxidant-enriched propolis extract (tree sap, bee food and beeswax) to help restore healthy-looking vitality to tired skin. **225-126-6**

# BUBBLE BATH

A kiss of scent.  
A caress of softness.  
Show your body how  
much you care!

**Senses Peppermint  
Delight Bubble Bath**  
Indulge in this magical  
peppermint fragrance  
accented with creamy  
vanilla, white chocolate,  
chilled raspberries  
and cool freesia.  
Dermatologically-  
tested. 700 ml  
**223-203-7**  
reg. 16.00  
**9.99**



# HAND SOAP

Fresh and clean  
go hand in hand!

Leaves hands  
soft, cleansed and  
lightly scented.

**Senses Hand Soap**  
240 ml  
Fresh Cucumber &  
Melon **113-538-8**  
Silky Vanilla  
**113-538-7**  
reg. 14.00  
**8.39** each



# hand cream



# free

**Cozy Vanilla & Coconut Hand Cream**  
with every purchase  
from pages 220-225

**9.00 VALUE**

In case of unforeseen demand, Avon reserves the right to substitute a product with one of equal or greater value.

## SENSES COZY VANILLA & COCONUT

Envelop yourself in a cozy cloud of comforting vanilla, creamy coconut and calming chamomile.

### Body Mist

With aloe vera extract. Refreshes and leaves skin feeling soothed. 236 ml  
**221-935-8**  
reg. 25.50  
**20.99**

### Shower Gel

Moisturizing cleanser derived from coconut. 295 ml  
**221-936-0**  
reg. 24.00  
**19.99**

### Body Lotion

Smooths and softens with moisture-rich shea butter and vitamin E. 236 ml  
**221-935-9**  
reg. 24.00  
**19.99**

### Hand Soap

With moisturizing glycerin, leaves hands feeling clean and soft. 300 ml  
**222-938-4**  
reg. 20.00  
**13.99**



# scrub away dead skin cells

**NEW**

### Body Scrub

Removes dry, dead skin. Shea butter and olive and avocado oils help moisturize to leave skin feeling soft and smooth. 255 g  
**224-996-8**  
reg. 30.00  
**20.99**

GENTLE EXFOLIATING  
BODY SCRUB



Free from  
parabens, mineral  
oil, silicone,  
phthalates and dyes



# steam & de-stress

**HOW TO USE**  
Place one tablet on the floor of your shower, away from the heavy stream. Once activated with a touch of water, the tablet starts to dissolve, diffusing the fragrance into the steam of your shower.



**SENSES GRATITUDE  
LAVENDER & CEDARWOOD**  
Fill your space with calming lavender and cedarwood.



A

Pack of 6 shower steamers



## ALL NEW

### A. Six Shower Steamers

Take a deep breath and feel the stress melt away. Scented shower steamers release notes of soothing lavender and aromatic cedarwood. Infused with real lavender. Six shower steamers. Each, 28 g

**224-994-1**  
reg. 35.00  
**29.99** pack of 6 shower steamers

### B. ❖ Candle

Luxurious 1-wick candle. Notes of soothing lavender and aromatic cedarwood. Soy-wax blend. 8 cm diam. x 9 cm H. Burn time: 40 hours. Glass/wax. 198.4 g

**224-993-4**  
reg. 30.00  
**24.99**

### C. Bath Salts

Pour a handful under warm running water. Infused with sea salt, glycerin and sunflower seed oil. Leaves your body feeling soft and relaxed with soothing notes of lavender and cedarwood. Use 1-3 times a week. 354 g

**224-996-6**  
reg. 30.00  
**24.99**

# worries melt away

Soothe stress away with **Senses Gratitude Lavender & Cedarwood** for your bath.



B

FREE from parabens, mineral oil, silicone, phthalates and dyes

C



**free** COZY VANILLA & COCONUT HAND CREAM  
Details, page 220

Never leave burning candles unattended. Keep away from children and pets.

NEW





tranquility  
at home



**SENSES GRATITUDE  
LAVENDER &  
CEDARWOOD**

*Relax. Unwind. Breathe.*  
Create a private sanctuary.

**ALL NEW**

**A. Air Diffuser**  
Scent your space all day. Diffuser disperses notes of soothing lavender and aromatic cedarwood. 6 diffuser reeds. Fragrance oil, 70 ml **224-993-6** reg. 40.00 **34.99**

**B. ❖ Candle**  
Luxurious 1-wick candle. Notes of soothing lavender and aromatic cedarwood. Soy-wax blend. 8 cm diam. x 9 cm H. Burn time: 40 hours. Glass/wax. 198.4 g **224-993-4** reg. 30.00 **24.99**

**C. Room Spray**  
Instantly refresh your home and create a relaxing atmosphere. with fragrant notes of soothing lavender and aromatic cedarwood. 96 ml **224-994-0** reg. 18.00 **14.99**



**NEW**

FREE from parabens, mineral oil, silicone, phthalates and dyes



**free** COZY VANILLA & COCONUT HAND CREAM  
Details, page 220

Never leave burning candles unattended. Keep away from children and pets.



# TURN YOUR TROUBLES INTO BUBBLES

BONUS SIZE  
1 litre



## FOAM BATH

Nourishing, fresh and inspiring. Enriched with vitamins E and B5

✦ Alo Fruits & Passion  
Foaming Bath Refill  
BONUS SIZE

1 litre

Ocean Flower **222-719-4**

Orange Cantaloupe **222-718-9**

Pear Peony **222-389-5**

Grapefruit Guava **223-299-6**

**29.00** each or...

**ONLY  
12.99** each

WITH EVERY  
PURCHASE FROM  
THIS BROCHURE  
excluding pages  
226-227

# don't sweat it!

## Roll-On Anti-Perspirant Deodorant

24-hour wetness protection. 75 ml

Clockwise:

Skin So Soft Soft & Sensual

**119-964-4**

Rare Pearls **103-708-1**

Sweet Honesty **370-736**

Imari **106-378-3**

Night Magic **107-042-5**

Timeless **370-735**

Odyssey **107-042-6**

Rare Gold **103-708-2**

Far Away **107-042-7**

Mesmerize **103-708-3**

Black Suede **114-898-5**

Wild Country **369-866**

Tranquil Moments

**107-425-6**

Feelin' Fresh Original

**380-345**

Cool Confidence

Baby Powder **380-346**

Cool Confidence

Original **380-344**

On Duty Sport **380-309**

On Duty Unscented **380-343**

On Duty Original **380-342**



5.00 each or...

**ANY 5 FOR  
10.00**

To get the ANY 5 for price,  
please order in  
multiples of 5.

**BUY NOW! BROCHURE IS VALID FOR A LIMITED TIME. SEE BELOW.**

### Campaign 4, 2023

The advertised prices featured in this brochure (errors and omissions excluded) are Avon's retail prices for this current campaign and are applicable to online or Representative channel purchases only. [Your] Representative[s] set[s] their own selling price depending on the channel of purchase. All prices exclude applicable taxes. All prices and promotions (excluding delivery) featured in this brochure are valid for orders placed during this campaign only.



See our commitment at:  
[avongivesback.ca](http://avongivesback.ca)



Member of The Canadian  
Direct Sellers Association

**KINDLY SUBMIT YOUR ORDER BY:** \_\_\_\_\_



@MyAvonCanada

1-800-265-2866  
avon.ca

### 100% SATISFACTION GUARANTEED

If you are not happy with any purchase,  
return the product through  
the same channel of purchase.

**If you purchased online**, return the product  
to Avon within 30 calendar days from the date  
stated on your receipt for your money back.

**If you purchased from an Avon Independent  
Sales Representative**, products must be  
returned to your Representative along with  
your receipt within 30 calendar days from the  
delivery date stated for a replacement,  
exchange or your money back.

Certain restrictions apply. Details of the Return  
Policy can be found on your receipt or at [avon.ca](http://avon.ca).

FSC (IND.) 4673011  
FSC (10) 4673031