

AVON

CAMPAIGN 5



NEXT-LEVEL SKIN CARE

how to build
the perfect routine

+ FREE GIFT INSIDE



personalize your skin care regimen

We've got **cleansers**
for your skin type,
treatments for
your specific concerns
and **moisturizers**
for all your needs.

FREE

**ISA KNOX LXNEW
ULTIMATE REJUVENATING
DUAL NIGHT CREAM**
WITH ANY \$39 SKIN CARE
PURCHASE, PAGES 3-19 AND 68-73.
\$70 VALUE.
SOLD SEPARATELY ON PAGE 14.
LIMITED QUANTITIES.



cleanse

Start fresh. Cleanse AM and PM
to **remove impurities** and
allow skin to **breathe,**
plus **prep skin** for
treatments and
moisturizers.



NORMAL TO DRY SKIN
**Isa Knox LXNEW Clean
Nourishing Cream Cleanser**
Removes impurities and
makeup while restoring
moisture. 150 ml 222-986-2
reg. \$18
\$14.99

NORMAL, DRY AND COMBINATION SKIN
**Isa Knox LXNEW Clean
Balancing Gel Cleanser**
Gel to foam. Helps remove oil and impurities.
150 ml 222-986-6
reg. \$18
\$14.99

OILY TO NORMAL SKIN
**Isa Knox LXNEW Clean
Soothing Whipped Oil Cleanser**
Helps eliminate impurities and excess oil.
150 ml 223-124-6
reg. \$24
\$18.99



**Isa Knox Anew Clinical
Line Eraser with Retinol Targeted Treatment**
Deep lines look reduced and skin looks
resurfaced. Use PM. 20 ml **226-061-1**
reg. \$56
\$33.99

**Isa Knox Anew Clinical
Line Eraser with Retinol Treatment**
Great for first-time retinol users.
Use AM/PM. 30 g **226-060-0**
reg. \$63
\$39.99



**Isa Knox Anew Clinical Collagen Booster
Rejuvenating Serum Ampoules**
Powerful peptide blend helps rejuvenate your skin's
look. 60 capsulated single-use ampoules. 0.22 ml
each. **221-391-4**
reg. \$88
\$69.99



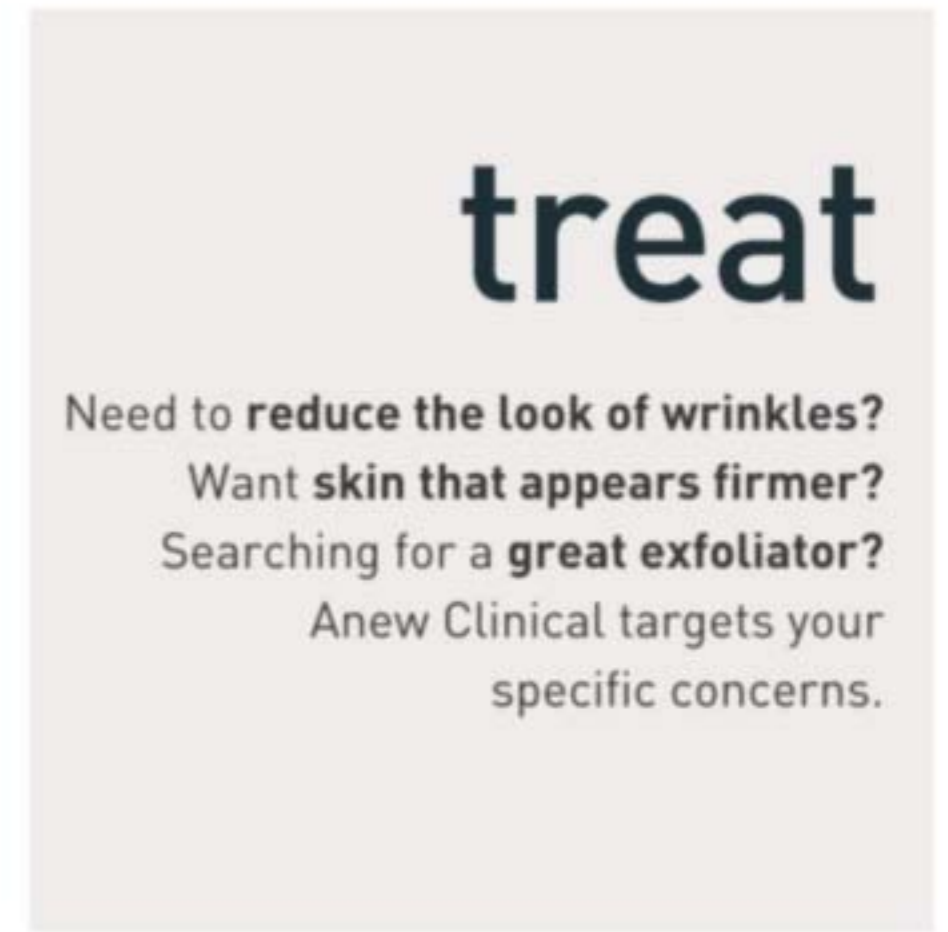
**Isa Knox Anew Clinical Collagen Booster
Firming Cream**
With peptides, niacinamide and squalane
to help firm the look of skin. Hygienic,
airless pump. 50 ml **226-035-4**
reg. \$65
\$39.99



**Isa Knox Anew Clinical
Collagen Booster
Eye Lift Pro Dual Eye System**
With a peptide complex. Eye area looks lifted
and firmer. Gel, 10 ml; Cream, 10 ml
225-718-1
reg. \$56
\$33.99



**Isa Knox Anew Clinical
Revitalize & Reveal
Advanced Wrinkle Corrector**
Wrinkles appear reduced. 50 ml
226-060-2
reg. \$56
\$33.99

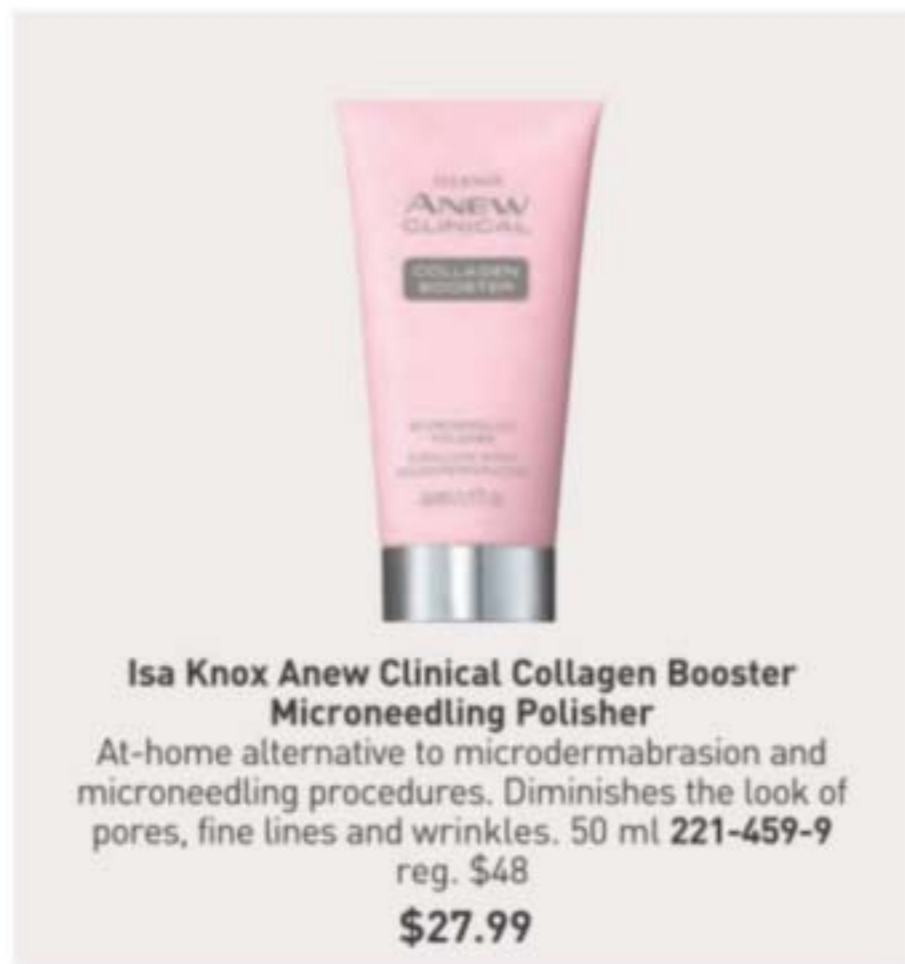


treat

Need to **reduce the look of wrinkles?**
Want **skin that appears firmer?**
Searching for a **great exfoliator?**
Anew Clinical targets your
specific concerns.



**Isa Knox Anew Clinical Line Eraser with
Retinol [1.0%] Advanced Retinol Serum**
Our highest dose of retinol. Dramatically reduces
the appearance of fine lines, wrinkles and dark spots.
30 ml **223-424-8**
reg. \$72
\$55.99



**Isa Knox Anew Clinical Collagen Booster
Microneedling Polisher**
At-home alternative to microdermabrasion and
microneedling procedures. Diminishes the look of
pores, fine lines and wrinkles. 50 ml **221-459-9**
reg. \$48
\$27.99



**Isa Knox Anew Clinical
Revitalize & Reveal
Extra Strength Retexturizing Peel**
Results similar to a 35% pro glycolic peel.*
30 fragrance-free pads, 5 cm diam. **226-067-3**
reg. \$56
\$33.99

*In 6 out of
8 attributes
tested over a
7-week period.



**Isa Knox Anew Clinical
Revitalize & Reveal
Resurfacing Lotion for Body**
Exfoliates with gentle yet effective AHA lactic acid.
Moisturizes with shea butter. 150 ml
223-261-2 reg. \$48
\$27.99



moisturize

Moisturizers **seal in hydration** to keep skin appearing **softer** and **more supple** so you can look **youthful for years to come**. Daytime moisturizers help hydrate so you look your best. **Nighttime** moisturizers are formulated with intense ingredients to support **skin renewal** while you sleep.



Anew Ultimate Multi-Performance Night Cream
It works while you sleep to revive and recreate the look of youthful skin. 50 g **226-044-8**
reg. \$59
\$36.99



Anew Ultimate Multi-Performance Eye System
Reduces the look of crow's feet and helps de-puff the appearance of under-eye bags. Cream, 15 g; Elixir, 2.5 g. **226-046-3**
reg. \$59
\$36.99



Anew Ultimate Supreme Advanced Performance Crème
With Black Pearl Extract. See a dramatic difference in the look of deep wrinkles and skin radiance. 50 g **226-055-8**
reg. \$84
\$55

Anew Ultimate Supreme Eye Balm
Moisturizing formula infused with squalane, sunflower seed oil and antioxidant vitamin E. Wear alone or under makeup. 2.9 g **224-621-8**
reg. \$63
\$38.99



Anew Ultimate Night Repair Serum
Diminishes the look of fine lines and improves the appearance of tone and texture. With peptides, licorice, hyaluronic acid and niacinamide. Use PM before moisturizer. 30 ml **224-621-9**
reg. \$63
\$38.99



Anew Ultimate Supreme Dual Elixir
With Black Pearl Extract and precious oils. See a dramatic difference in the look of even advanced signs of aging. Serum/Oil, 20 ml each. **222-400-7**
reg. \$84
\$55

moisturize

Need a lift?
Anew Platinum
 moisturizing creams
 are infused with
**Patented Paxillium
 Technology** to help
 lines appear reduced
 and skin look **lifted
 and redefined**, even
 down to your neck.



Anew Platinum Night Cream
 Skin appears smoother overnight and
 looks resculpted over time.
 50 g **226-044-9**
 reg. \$59
\$36.99



Anew Platinum Sculpting Body Serum
 Skin looks firmer and smoother. With niacinamide,
 panthenol (pro-vitamin B5) and peptides, known to
 help boost moisture. 200 ml **226-033-0**
 reg. \$63
\$38.99

**Anew Platinum
 Firm and Sculpt Cream
 for Neck and Chest**
 Infused with Peptide
 Lifting Complex.
 Use PM after
 cleansing. 50 g
226-045-1
 reg. \$59
\$36.99



**Anew Platinum
 Eye & Lip Cream**
 Smooths the
 appearance of the area
 around the eyes and
 lips. Dual applicator.
 15 g **226-046-5**
 reg. \$59
\$36.99



**Anew Platinum
 Age Delay Serum**
 Helps enhance the look of elasticity
 for a firmer, more lifted appearance.
 With niacinamide (vitamin B3)
 and panthenol (pro-vitamin B5),
 plus peptides. 30 ml **224-622-0**
 reg. \$63
\$38.99

moisturize

Seal in hydration and **brighten** your appearance. This **vitamin C moisturizer** helps combat the look of dullness. It's infused with natural **citrus extracts** to help skin appear **brighter**, and formulated with **silicones** to help skin look **smoother**.




Anew Vitamin C Illuminating Priming Moisturizer
Instantly illuminates, hydrates and blurs the look of imperfections. Wear alone or under makeup. 50 ml **226-056-0** reg. \$48
\$26.99



Anew Vitamin C Brightening Serum
Skin appears energized and brighter with the power of 10% pure vitamin C. 30 ml **225-768-0** reg. \$62
\$34.99




Anew Vitamin C Brightening Eye Cream
Reduces the look of dark circles. Under-eye area looks brighter and more even toned. 15 ml **226-055-9** reg. \$48
\$26.99




Anew Vitamin C Glow Body Scrub
Sugar-based formula, with pineapple and papaya enzymes and coffee seed extract, exfoliates dry, dull skin, while a blend of sunflower seed and sweet almond oils replenishes moisture. Refreshing citrus scent. 255 g **224-623-6** reg. \$50
\$28.99



Anew Vitamin C Nourishing Body Butter
With hydrating shea butter and sodium PCA, enriched with niacinamide, helps rejuvenate the look of radiance with vitamins C and E. Uplifting fruity-floral and citrus scent. 230 ml **225-903-7** reg. \$45
\$24.99



Anew Vitamin C Antioxidant Lip Treatment
Nourishes lips with vitamins C and E. 3.8 g **222-256-6** reg. \$20
\$11.99



Anew Power Serum
See a powerful difference in hydration and the look of texture, radiance, firmness and diminished wrinkles. 30 ml **106-273-6** reg. \$63
\$38.99



belif
The True Cream
Moisturizing Bomb
 For dryness, loss of elasticity and firmness. 26 hours of long-lasting moisture.* Full size, 50 ml **225-386-5**
\$51.50



belif
The True Cream
Aqua Bomb
 For dryness, dullness and uneven texture. 70% increase in hydration levels.* Full size, 50 ml **222-722-7**
\$51.50



Anew Hydra Fusion
1.5% Hyaluronic Acid Serum
 With 3 different molecular sizes of HA that reach multiple layers of skin's surface to help plump the look of skin. 30 ml **226-083-8** reg. \$62
\$34.99



Anew Hydra Fusion De-Puffing Eye Serum
 Eyes look and feel refreshed. With caffeine and hyaluronic acid. Cooling ceramic tip. Instantly boosts hydration around eye area by 3X. 15 ml **226-060-3** reg. \$48
\$26.99



Rice Water Bright Rice Bran
Gentle Exfoliating Cleanser
 Daily scrub with organic rice bran powder, rice bran oil and hydrated silica. 300 ml **223-093-3** reg. \$23
\$19



Avon Solutions
Dramatic Firming
Cream
 Skin looks and feels smoother. 50 ml **226-059-9** reg. \$20
\$12



Avon Solutions
Nurtura
Replenishing
Cream
 Adds moisture to dry skin. 50 ml **226-045-8** reg. \$20
\$12



Avon Solutions
Banishing Cream
Skin Discoloration
Improver
 Helps improve the look of skin tone. 75 ml **226-059-8** reg. \$20
\$12



Avon Solutions
Anti-Aging
Cream
 Moisturizing formula works to reduce the appearance of fine lines and wrinkles. 50 ml **226-059-5** reg. \$20
\$12



Rice Water Bright Cleansing Facial Wipes
 Great on the go. With rice extract to moisturize while cleansing. Removes eye makeup. 50 wipes. **221-900-8** reg. \$16
\$13



Rice Water Bright Foaming Cleanser
 Light whipped foam leaves skin feeling cleansed and refreshed. With rice water and soapwort extract. Skin looks clear and bright. 300 ml **221-900-0** reg. \$19
\$16



Isa Knox LXNEW Ultimate Rejuvenating Serum

With paeonol and ceramides, improves the look of elasticity, radiance and skin texture. Reduces the appearance of wrinkles. 40 ml **224-488-7**
reg. \$80

\$64



Isa Knox LXNEW Ultimate Rejuvenating Eye Serum

Infused with paeonol and niacinamide to help reduce the look of fine lines around the eye area and de-puff the look of under-eye bags. 30 ml **224-488-8**
reg. \$70

\$56



Isa Knox LXNEW Platinum Sculpting Neck and Chest Cream

With hibiscus extract, ceramide, shea butter, panthenol and squalane to help skin along the neck and chest appear firmer, smoother and lifted. 50 ml **224-106-2** reg. \$70

\$56



Isa Knox LXNEW Ultimate Rejuvenating Day Cream

With paeonol, reduces the appearance of wrinkles and improves the look of elasticity, radiance and skin texture. With nutmeg to help even the look of skin tone. 50 ml **224-488-6**
reg. \$70

\$56



Isa Knox LXNEW Ultimate Rejuvenating Multi-Corrector

Paeonol-infused serum with niacinamide and panthenol. Skin looks smoother and more youthful. 50 ml **226-113-8**
reg. \$70

\$56



Isa Knox LXNEW Ultimate Rejuvenating Dual Night Cream

With paeonol and macadamia oil. Volume Cream, 25 ml: rice bran extract helps plump the look of skin. Firming Cream, 25 ml: helps skin look firmer. **224-488-5**
reg. \$70

\$56



Isa Knox LXNEW Ultimate Rejuvenating Balm Stick

With peony extract, plus a complex featuring castor, moringa and argan oils. Apply to forehead, eyes and neck, or anywhere you want extra care.

7 g **225-907-0**

reg. \$35

\$29.99



Isa Knox LXNEW Platinum Sculpting Oil Serum
40 ml **223-197-7**
reg. \$80
\$64

Isa Knox LXNEW Platinum Sculpting Day Cream

Infused with moisturizing hibiscus extract and smoothing ceramide. Helps tighten the look of facial contours. 50 ml **223-197-6**
reg. \$70

\$56

Isa Knox LXNEW Platinum Sculpting Eye Cream

With hibiscus extract, panthenol and antioxidants. Leaves the delicate eye area looking firmer, brighter and more defined. 25 ml **223-197-8**
reg. \$70

\$56

Isa Knox LXNEW Platinum Sculpting Night Cream

With firming hibiscus extract, ceramide, squalane and shea butter. Skin looks firmer, smoother and more defined. 50 ml **223-197-5**
reg. \$70

\$56



Farm Rx Bakuchiol Cream
 Moisturizing cream with bakuchiol, a plant-based alternative to retinol that you can use during the day. Reduces the look of wrinkles. Vegan. Hypoallergenic. Suitable for sensitive skin. 90 ml
 224-113-1
 reg. \$63
\$45.99



Farm Rx Super Greens Cooling Gel
 Lightweight moisturizer helps skin feel cool. Apply a thicker layer, after serum, as a mask to hydrate overnight as needed.
 90 ml 223-642-5
 reg. \$53
\$39.99



Farm Rx Super Greens Refreshing Eye Cream
 With nourishing Super Greens formula, plus cucumber extract. Hydrates and green tea helps reduce the look of puffiness. 30 ml
 225-599-0 reg. \$44
\$32.99



Farm Rx Bakuchiol Serum
 Concentrated lightweight oil-textured formula penetrates skin's surface to reduce the look of fine lines, wrinkles and dullness without irritation. 30 ml 223-643-7 reg. \$63
\$45.99



Farm Rx Bakuchiol Eye Cream
 Reduces the look of dark circles, fine lines and wrinkles without irritating the delicate eye area. 30 ml 223-643-8
 reg. \$53
\$39.99



Farm Rx Super Greens Multivitamin Moisture Cream
 Locks in essential nourishing moisture. Use daily after cleansing, serums and treatments. 90 ml 223-642-6
 reg. \$53
\$39.99



Farm Rx Super Greens Refreshing Gel Cleanser
 With aloe. Convenient pump. Eco-friendly packaging and glass bottle. Use AM/PM. 240 ml 224-108-4
 reg. \$35
\$24.99

CLEANSE, TONE, BRIGHTEN SET

Anew Vitamin C Illuminating Priming Moisturizer
50 ml

Avon Solutions Banishing Cream Skin Discoloration Improver
75 ml

Isa Knox LXNEW Clean Nourishing Cream Cleanser
150 ml

3-PIECE SET

\$38.99

\$86 VALUE



FACE, LIPS AND EYES SET

Anew Vitamin C Brightening Eye Cream
15 ml

Anew Vitamin C Antioxidant Lip Treatment
3.8 g

Avon Solutions Nurtura Replenishing Cream
50 ml

3-PIECE SET

\$36.99

\$88 VALUE

To order items on this page, please go to avon.ca.



AGE-DEFY SET

Isa Knox Anew Clinical Line Eraser with Retinol Targeted Treatment
20 ml

Isa Knox LXNEW Clean Soothing Whipped Oil Cleanser
150 ml

Anew Platinum Age Delay Serum
30 ml

3-PIECE SET

\$63.99

\$143 VALUE



FACE AND EYES SET

Isa Knox Anew Clinical Line Eraser with Retinol Treatment
30 g

Rice Water Bright Cleansing Facial Wipes
50 wipes.

Isa Knox Anew Clinical Collagen Booster Eye Lift Pro Dual Eye System
Upper eye gel, 10 ml
Lower eye cream, 10 ml

3-PIECE SET

\$59.99

\$135 VALUE

To order items on this page, please go to avon.ca.





kiss me forever

TPSY Forever Lip Marker

Vibrant long-wearing formula with castor and sunflower oils. Matte finish. Formulated without parabens, sulfates and phthalates. 2.5 ml reg. \$24

\$18.99

NEW SHADES



Plum Jam 226-438-4 Cherry Crush 226-438-2 Pink Fizz 226-438-3



Crazy Rabbit 224-860-2 Felt Pink 224-860-0 Blackberry Bite 224-860-4 Sour Candy 224-860-1



TPSY

TPSY

TPSY

free
fmg Makeup Remover Wipes
with any \$26 makeup purchase,
pages 20-29 and 80-87.
\$14 value.

Sold separately on page 86.
Limited quantities.



TPSY Shiny Lip Oil
Glossy formula with jojoba, argan and castor oils. Formulated without parabens, sulfates, phthalates and talc. 3.7 g reg. \$24

\$18.99



Love Galore
224-859-8



fmg Glimmer Birthday Balm Lip Crayon

Sheer, soft shine formula with non-GMO shea butter. Formulated without parabens and gluten. 2.7 g reg. \$21

\$15.99



Lovin' Life 225-716-2 Birthday Suit 225-716-4 PYT 225-716-3



Surprise! 225-716-5 Fine Wine 225-716-6 Birthday Post 225-716-7



fmg LOVE Lip Butter

Sheer, high-shine formula with cupuaçu seed butter, mango extract and apricot kernel and olive fruit oils. Buildable coverage. Formulated without parabens, sulfates and phthalates. 2.7 g reg. \$26

\$19.99



Love Affair 225-989-5 Pucker Up 225-989-0 Tease 225-989-1



Secret Crush 225-989-2 Rendezvous 225-989-3 Flirtatious 225-989-4



fmg Glimmer Satin Lipstick

Lightweight creamy formula with pomegranate extract. Buildable coverage. Satin finish. Formulated without parabens and sulfates. 3 g reg. \$17

\$12.99



Windstorm
222-947-3



Cyclone 222-947-6 Desert Moon 224-850-3 Poppy 222-948-5 Aster 224-849-7 Equinox 224-850-4



Twilight 224-850-5 Honeyflower 225-661-2 Constellation (Shimmer) 224-850-0 Blaze 222-948-3 Wild Cherry 224-849-8



Stellar 225-661-3 Sierra Sunset 222-947-7 Luna 222-947-8 Wildrose 222-948-9 Plum Blossom 224-850-2



Dahlia 225-661-1 Rose Angel 222-948-6 Aurora 225-661-4 Hibiscus 222-948-7 Wildflower 222-948-8



Eclipse 224-849-6 Tulip 224-849-9 Celestial 222-948-0 Morning Glory 224-850-1 Violet Night 222-949-0



fmg Glimmer Cream Eyeliner
Long-wearing formula with soft sheen finish. Retractable. Formulated without parabens, sulfates and talc. 0.28 g reg. \$13

\$5.99



fmg Glimmer Lipliner
Long-wearing creamy formula with vitamin E. Prevents feathering. Matte finish. Retractable. Formulated without parabens, sulfates and talc. 0.28 g reg. \$13

\$5.99



fmg Cashmere Eyeshadow Palette
Long-wearing formula with crease-resistant wear. Satin, matte and sparkling finishes. Formulated without parabens, talc and fragrance. 18 g reg. \$58

\$48



NEW

fmg Cashmere Multi-Peptide Eyeshadow Primer

Keeps eyeshadow in place and intensifies the colour. Skin-loving ingredients help to reduce the appearance of fine lines, and plump the look of and support the skin barrier. Sheer formula with Matrixyl 3000 peptide blend, hyaluronic acid, collagen and panthenol. Formulated without parabens and talc. 9 g

226-078-5
reg. \$32

\$25.99



fmg Glimmer Diamond Eyeliner
Long-wearing formula with subtle sparkle. Retractable. Formulated without parabens, sulfates and talc. 0.28 g reg. \$13

\$5.99



fmg Glimmer Waterproof Eyeliner
Long-wearing, smudge- and waterproof formula. Retractable. Formulated without parabens, sulfates and talc. 0.28 g reg. \$13

\$5.99



fmg Cashmere Ultimate Volume Mascara

Long-wearing formula with biotin and collagen. Glossy black finish. Won't budge, smudge or transfer. Formulated without parabens, sulfates and talc. 8 ml

Rich Black 224-700-0
reg. \$33

\$25.99



NEW

fmg Cashmere Cream Concealer

Long-wearing peptide-infused formula helps to camouflage dark circles and uneven skin tone. With hyaluronic acid and collagen. Full-coverage. Matte finish. Formulated without parabens, phthalates, talc and fragrance. 6 g

reg. \$23

\$17.99



fmg Glimmer Brow Definer
Long-wearing formula with castor and coconut oils. Smudge-, transfer-, sweat- and waterproof. Matte finish. Formulated without parabens, sulfates and talc. 0.28 g reg. \$13

\$5.99



fmg Glimmer Liquid Eyeliner
Quick-drying long-lasting formula. Transfer-, sweat- and waterproof. Matte finish. Formulated without parabens, phthalates and fragrance. 1.1 ml

Blackest Black 223-883-9
reg. \$18

\$14.99



fmg Glimmer Always On Point Eyeliner
Built-in sharpener. Smudge- and waterproof. Formulated without parabens, sulfates and talc. 0.25 g

reg. \$15

\$11.99



fmg Cashmere Under Eye Primer

Helps diminish the look of dark circles and fine lines. With caffeine, green tea extract and vegan collagen. Formulated without parabens, phthalates and fragrance. 9 g

224-948-4
reg. \$35

\$26.99



NEW

fmg Cashmere Multi-Peptide Face Primer

Revitalizing ingredients help to reduce the appearance of fine lines and pores, and plump the look of and support the skin barrier. Sheer gel formula with Matrixyl 3000 peptide blend, hyaluronic acid, collagen and niacinamide. Formulated without parabens, talc and fragrance. 30 ml

226-078-6
reg. \$34

\$27.99



fmg Glimmer Eyeshadow Quad

Soft powder formula lasts all day. No messy fallout. Buildable coverage. Available in Multi or All Matte finishes. Formulated without parabens and fragrance. 6 g reg. \$22

\$16.99



fmg Glimmer SuperExtend Nourishing Mascara

Long-wearing lengthening formula with vitamin E, argan and coconut oils. Won't clump, smudge or flake. Formulated without sulfates and talc. 7 ml

Black 225-983-9
Brown Black 225-984-0
reg. \$19

\$14.99



fmg Colors of LOVE Hi-Brow Brow Gel

Won't clump, smudge or flake. Matte finish. Formulated without parabens, phthalates and fragrance. 3.3 ml reg. \$26

\$19.99



fmg Colors of LOVE Hi-Brow Sculpting Brow Gel

Clear formula with aloe and hyaluronic acid. Flake-proof. Matte finish. Formulated without parabens, phthalates and fragrance. 3.3 ml

224-555-6
reg. \$26

\$19.99



fmg Glimmer SuperShock Volumizing Mascara

Lash-building formula with plumping fibres. High-gloss finish. Won't clump, smudge or flake. Formulated without phthalates and fragrance. 10 ml

Black 225-983-8
reg. \$19

\$14.99



fmg LOVE at 1st Lash Mascara

Lash-loving volumizing and lengthening fibres. With lycopene, olive oil and vitamin E. Won't clump, smudge or flake. Formulated without parabens and sulfates. 9 ml

Blackest Black 225-679-9
reg. \$26

\$19.99



fmg Glimmer Wash-Off Waterproof Mascara

Waterproof volume. Washes off easily with soap and water. Formulated without phthalates and fragrance. 6 g

Black 225-983-2
reg. \$17

\$12.99



LOVE at 1st Lash Waterproof Mascara

Lash-loving waterproof formula with volumizing and lengthening fibres. With Lashrez, olive oil and vitamin E. Won't clump, smudge or flake. Formulated without parabens and sulfates. 8.5 ml

Blackest Black 226-029-8
reg. \$26

\$19.99



fmg CathyCat Shadow Gaze Matte Color Stick

Long-wearing formula will not budge or smudge. Buildable and blendable coverage. Matte finish. Formulated without parabens and fragrance. 1.35 g

reg. \$27

\$20.99



NEW

LIMITED EDITION
fmg Glimmer Glitz A-Peel Nail Lacquer
 Glittery quick-dry formula stays on until you're ready to take it off. Just peel off for fuss-free removal. No harsh acetone or remover needed. Glossy finish. Formulated without parabens, toluene, formaldehyde and camphor. 12 ml reg. \$18
\$13.99

**PAINT ON...
PEEL OFF!**

Apply **three coats** for maximum glitter.

Leading Lady 226-350-0 Newlywed 226-349-9 Best in Class 226-350-2

fmg Glimmer Be Blushed Cheek Color
 Creamy formula with vitamin E. Buildable coverage. Dewy finish. Formulated without parabens, phthalates and fragrance. 4 g reg. \$21
\$15.99

Icy Petal 225-062-5 Blushing Nude 225-062-7 Golden Rose 225-062-3 Tropical Peach 225-063-8 Crushed Berry 225-063-6

fmg Glimmer Powder Blush
 Weightless formula with ultrafine pearl and vitamin E. Buildable coverage. Matte finish. Formulated without parabens, phthalates and fragrance. 8 g reg. \$20
\$15.99

Petal Pink 224-958-7 Pink Passion 224-958-8

fmg Glimmer Lip & Cheek Stain
 Highly pigmented long-wearing gel formula. Brush-tip applicator. Transfer-proof. Formulated without parabens and fragrance. 5.5 ml reg. \$24
\$18.99

Plumeria 224-975-0 Rosette 224-974-9

fmg Glimmer Powder Illuminator
 Lightweight buildable formula with vitamin E. Radiant finish. Formulated without parabens, phthalates and fragrance. 10 g reg. \$20
\$15.99

Rosé 225-930-2 Prosecco 225-930-1

fmg Glimmer Nail Base & Top Coat
 Two-in-one base and top coat primes and shields nails. Glossy finish. Formulated without parabens and phthalates. 12 ml 226-251-0 reg. \$17
\$12.99

fmg Glimmer Nail Lacquer
 Nail-strengthening, long-wearing, no-chip formula. Gel-like cushion texture. Formulated without parabens and phthalates. 12 ml reg. \$17
\$12.99

SATIN Lost Galaxy Plum 226-249-7 SATIN Black Hole Burgundy 226-250-0 SATIN Supernova Red 226-249-9 SATIN Night Sky Berry 226-249-8 SATIN High Magnitude Mauve 226-250-4

SATIN Lunar Tan 226-250-1 SATIN Cool Comet 226-250-2 SATIN Full Moon Flush 226-250-3 METALLIC Meteorite Rose 226-250-6 METALLIC Golden Galaxy 226-250-5

fmg Glimmer Nail Lacquer Eraser Pen
 For a clean and perfected mani. Won't dry out nails or cuticles. Formulated without parabens and phthalates. 4 ml 224-101-7 reg. \$17
\$12.99

TPSY I Want to Highlight You Liquid Highlighter
 Instant boost of moisture. With ultra-fine pearls for a naturally radiant finish. Fragrance-free. 30 ml 226-457-4 reg. \$33
\$26



fmg Match Filter Serum Tint Foundation
Instantly hydrates, blurs and evens tone. With hyaluronic acid, vitamin E and berry complex. Buildable coverage. Demi-matte finish. Formulated without talc, parabens and fragrance. 9 g reg. \$30
\$22.99



fmg Match Tint Radiant Tinted Moisturizer
Brightens skin tone, boosts moisture and blurs flaws. With passion fruit, chia and sunflower seed oils, and vitamins E and B5. Buildable coverage. Radiant finish. Formulated without parabens. 30 ml reg. \$20
\$15.99



fmg Match Wand Correcting Stick
Neutralizes unevenness, brightens and colour corrects. Long-wearing formula with shea butter and vitamin E. Formulated without parabens, phthalates and sulfates. 6 g reg. \$26
\$19.99



fmg GLOKOLOR Lip Serum Pencil
Refreshes and smooths lips. With peppermint and argan oils. Formulated without parabens and fragrance. 1.8 g **225-634-9** reg. \$29
\$23



fmg Match Set Finishing Powder
Controls shine, blurs the look of pores and fine lines, and sets makeup. Mineral-infused formula. Matte finish. Formulated without talc, parabens and fragrance. 6.5 g **224-487-0** reg. \$27
\$20.99



fmg GLOKOLOR Hybrid Face Mist
Instant boost of moisture to refresh skin. With aloe vera, agave and algae extracts. Formulated without parabens and sulfates. 80 ml **225-725-5** reg. \$35
\$29



fmg Match Prime Face Perfector
Flaw-blurring mattifying oil-free formula minimizes the look of pores and fine lines. Sheer coverage. Matte finish. Formulated without parabens. 30 ml **226-480-1** reg. \$24
\$18.99



fmg GLOKOLOR Hybrid Face Primer
Softens the appearance of imperfections. With aloe vera, agave and algae extracts. Formulated without parabens and sulfates. 30 ml **225-725-6** reg. \$35
\$29

live your
dream



soft floral
Dreamlife
Avon Classics Collection
Eau de Cologne Spray
Mimosa flower,
rose and amber.
50 ml 224-615-4
reg. \$26
\$15.99

free

Dreamlife
Eau de Cologne Spray
with any \$39 fragrance
purchase, pages 31-41
and 74-79.
\$26 value.
Limited quantities.



woody floral
Night Magic
Avon Classics
Collection Eau de
Cologne Spray
 Neroli, jasmine
 and musk.
 50 ml 110-300-9
 reg. \$26
\$15.99



amber floral
Candid
Avon Classics
Collection Eau de
Cologne Spray
 Bergamot, tuberose
 and patchouli.
 50 ml 110-321-3
 reg. \$26
\$15.99



soft floral
Sweet Honesty
Avon Classics
Collection Eau de
Cologne Spray
 Lily of the valley,
 rose and cedarwood.
 50 ml 110-437-8
 reg. \$26
\$15.99



soft floral
Odyssey
Avon Classics
Collection Eau de
Cologne Spray
 Tuberose, ylang-
 ylang and oak
 moss. 50 ml
 110-321-2
 reg. \$26
\$15.99



soft floral
Topaze
Avon Classics
Collection Eau de
Cologne Spray
 Jasmine, rose and
 sheer musk.
 50 ml 223-321-3
 reg. \$26
\$15.99



soft floral
Timeless
Avon Classics
Collection Eau de
Cologne Spray
 Cardamom, jasmine
 and patchouli.
 50 ml 110-373-1
 reg. \$26
\$15.99



fresh green floral
Free o2
Eau de Toilette Spray
 White peach tea,
 honeysuckle and musk.
 50 ml 222-618-9
 reg. \$26
\$15.99



scented softness

**Perfumed
Skin Softener**
 Moisturizing formula leaves
 skin soft and scented.
 150 ml
 reg. \$12
\$6.99 each



Candid 222-623-3



Night Magic Evening Musk 224-823-1



Odyssey 224-824-1



Sweet Honesty 222-623-0



Timeless 222-623-1



Far Away 222-702-0



Haiku 222-702-2



Imari 222-701-8

a world full of
infinite possibilities



fruity floral
**Far Away Infinity
Eau de Parfum**
Bergamot, jasmine sambac
and sandalwood.
50 ml 223-197-4
reg. \$35
\$24.99



fresh green floral
**Haiku Kyoto Flower
Eau de Parfum**
Violet leaf, white peony
and cotton musk.
50 ml 435-140
reg. \$35
\$24.99



fresh green floral
**Haiku Reflection
Eau de Parfum**
Water accord, acacia blossom
and amber wood.
50 ml 115-861-8
reg. \$35
\$24.99



fresh green floral
**Haiku
Eau de Parfum**
Yuzu, muguet and
blonde woods.
50 ml 220-269-8
reg. \$35
\$24.99



amber floral
**Far Away Gold
Eau de Parfum**
Ylang-ylang, jasmine
and vanilla.
50 ml 223-197-1
reg. \$35
\$24.99



fruity floral
**Far Away Bali
Eau de Parfum**
Grapefruit, salted
tuberose and amber.
50 ml 223-059-2
reg. \$35
\$24.99



amber floral
**Far Away
Eau de Parfum**
Freesia, jasmine
and amber.
50 ml 223-198-3
reg. \$35
\$24.99

the power
of seduction



amber floral

Imari Seduction Eau de Toilette
Wild berries, purple orchid and
patchouli. 50 ml 220-270-2
reg. \$35
\$24.99



amber floral

Imari Eau de Toilette
Bergamot, jasmine and amber.
50 ml 222-370-1
reg. \$35
\$24.99



woody floral

Imari Amor Eau de Parfum
Black currant, orris and musk.
50 ml 224-353-2
reg. \$35
\$24.99



amber floral

Rare Gold Eau de Parfum
Mandarin zest, ylang-ylang and amber.
50 ml 102-456-9
reg. \$35
\$24.99



fruity floral

Rare Amethyst Eau de Parfum
Plum, violet and sandalwood.
50 ml 102-456-8
reg. \$35
\$24.99



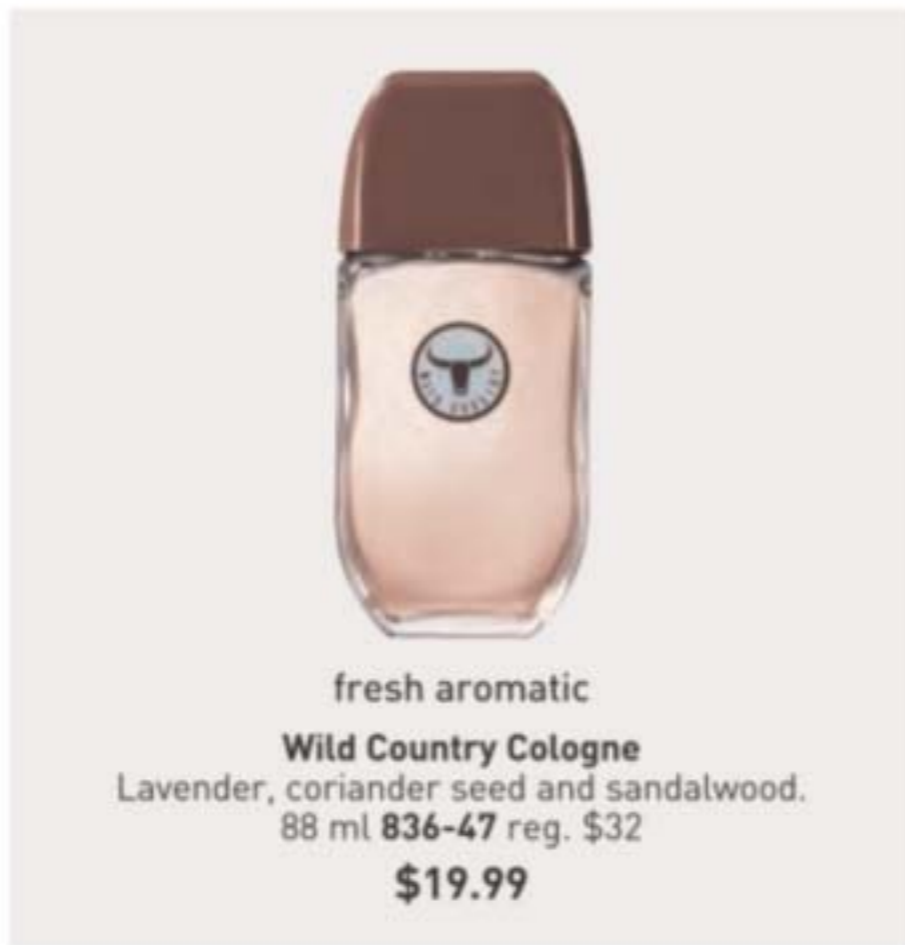
soft floral

Rare Pearls Eau de Parfum
Magnolia, white pepper and rosewood.
50 ml 223-987-9
reg. \$35
\$24.99

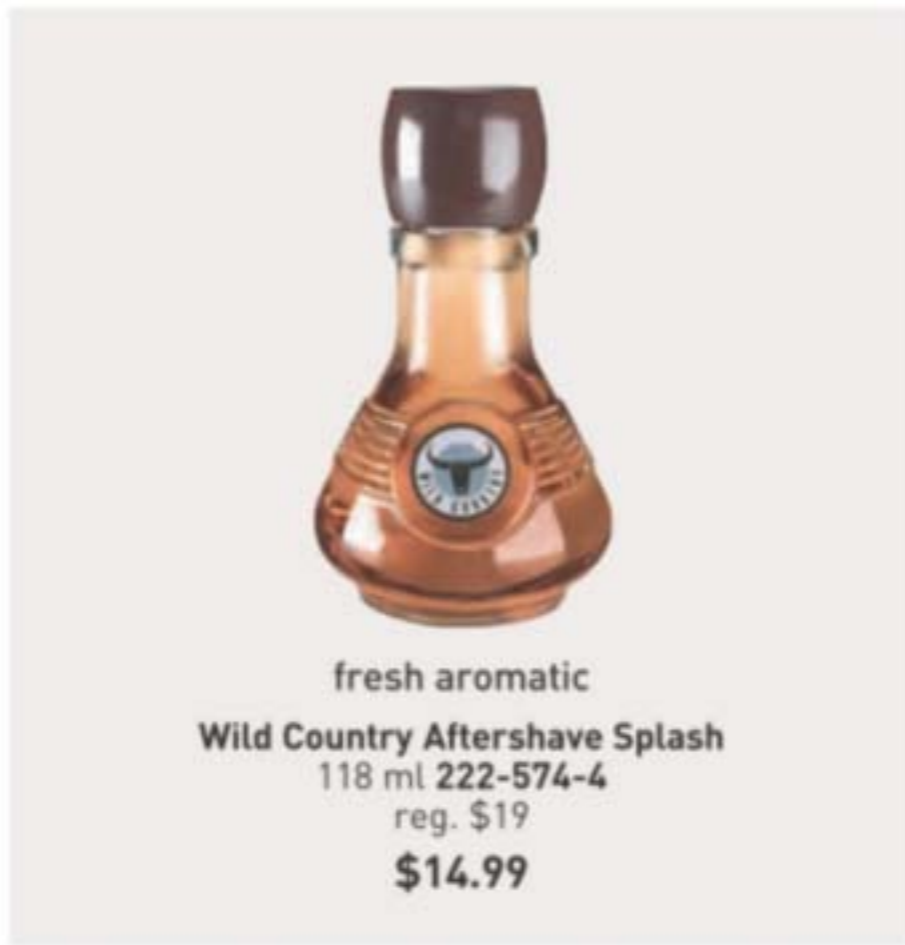




fresh aromatic
Black Suede Eau de Toilette
 Bergamot, leather and oak moss. 100 ml
 223-988-3 reg. \$32
\$19.99



fresh aromatic
Wild Country Cologne
 Lavender, coriander seed and sandalwood.
 88 ml 836-47 reg. \$32
\$19.99



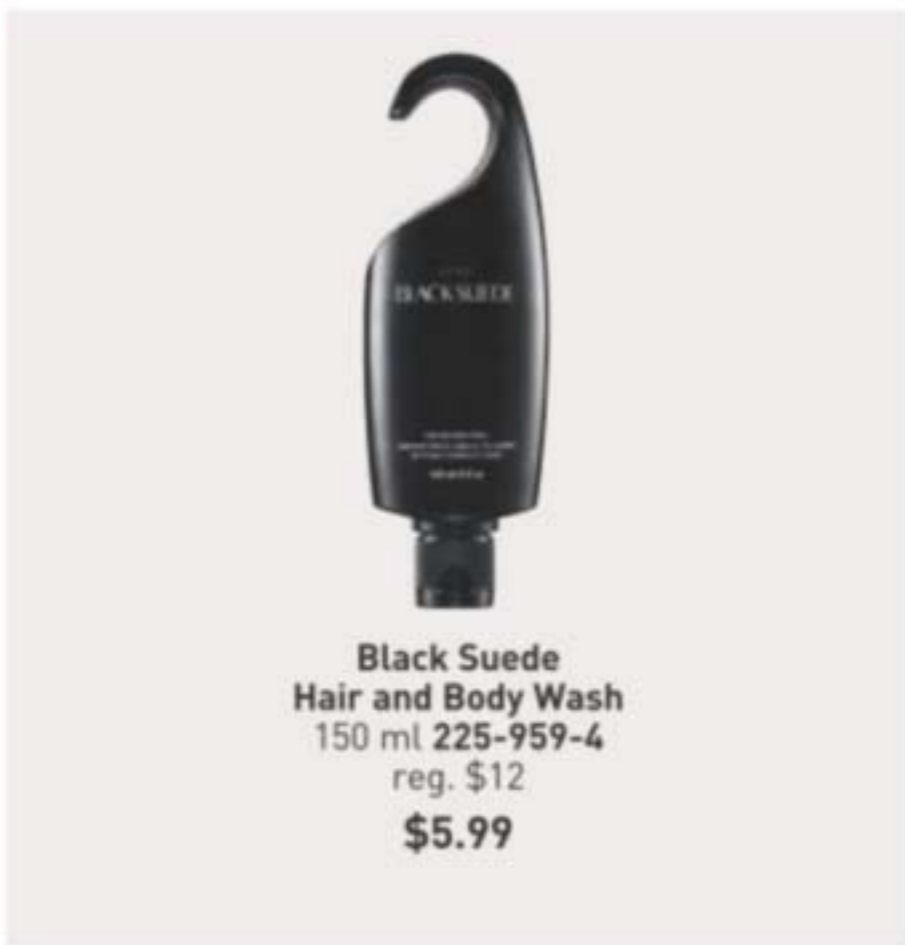
fresh aromatic
Wild Country Aftershave Splash
 118 ml 222-574-4
 reg. \$19
\$14.99



fresh aromatic
Perceive Cologne
 Citrus, sage and cedarwood. 100 ml
 831-73 reg. \$35
\$24.99



fresh aromatic
Avon Exploration Eau de Toilette
 Orange, silver sage and vetiver. 75 ml
 122-508-2 reg. \$35
\$24.99



**Black Suede
 Hair and Body Wash**
 150 ml 225-959-4
 reg. \$12
\$5.99



**Wild Country
 Hair and Body Wash**
 150 ml 225-959-3
 reg. \$12
\$5.99



fresh aromatic
Mesmerize Cologne
 Bergamot, cardamom and amber.
 100 ml 222-370-2 reg. \$35
\$24.99



always
 captivating

woody fougère
**Mesmerize Black
 Eau de Toilette**
 Pepper, nutmeg and tonka
 bean. 100 ml 108-628-3
 reg. \$35
\$24.99

HAIKU SET

fresh green floral

Eau de Parfum

Yuzu, muguet and blonde woods. 50 ml

Hair and Body Mist

96 ml

Perfumed Skin Softener

150 ml

3-PIECE SET

\$31.99

\$69 VALUE



BLACK SUEDE SMOOTH SET

fresh aromatic

Eau de Toilette

Bergamot, soft leather and oakmoss. 100 ml

Deodorant Stick

28 g

Hair and Body Wash

150 ml

3-PIECE SET

\$27.99

\$61 VALUE



SWEET HONESTY SET

soft floral

Cologne

Lily of the valley, rose and cedarwood. 50 ml

Hand Cream

75 ml

Perfumed Skin Softener

150 ml

3-PIECE SET

\$21.99

\$47 VALUE

To order items on this page,
please go to avon.ca.



WILD COUNTRY SET

fresh aromatic

Cologne

Lavender, coriander seed and sandalwood. 88 ml

Aftershave Splash

118 ml

Hair and Body Wash

150 ml

3-PIECE SET

\$27.99

\$63 VALUE

To order items on this page,
please go to avon.ca.





free

**SENSES
LAVENDER GARDEN
BUBBLE BATH**

WITH ANY \$32 PURCHASE,
PAGES 44-55 AND 88-99.
\$16 VALUE.
LIMITED QUANTITIES.
SOLD SEPARATELY ON PAGE 45.



Senses Cozy Vanilla & Coconut Body Scrub
With shea butter. 255 g
224-996-8
reg. \$30
\$20.99



Senses Cozy Vanilla & Coconut Shower Gel
Moisturizing cleanser. 295 ml
226-509-9
reg. \$24
\$19.99



Senses Cozy Vanilla & Coconut Body Lotion
With shea butter and vitamin E. 236 ml
221-935-9
reg. \$24
\$19.99



Senses Cozy Vanilla & Coconut Body Mist
With refreshing aloe vera extract. 236 ml
221-935-8
reg. \$25.50
\$20.99



Senses Cozy Vanilla & Coconut Hand Soap
With moisturizing glycerin. 300 ml
222-938-4
reg. \$20
\$14.99



Senses Cozy Vanilla & Coconut Hand Cream
With shea butter and antioxidants. 75 ml
226-452-3
reg. \$9
\$6.99

Senses Sparkling Grapefruit & Orange Blossom

Energize with a juicy mix of zesty grapefruit, bright orange blossom and delicate honeysuckle.

Shower Gel
Moisturizing cleanser derived from coconut. 295 ml
226-511-1
reg. \$24
\$19.99

Body Lotion
With shea butter and vitamin E. 236 ml
226-511-0
reg. \$24
\$19.99

Body Mist
With refreshing aloe vera extract. 236 ml
221-935-5
reg. \$25.50
\$20.99

Hand Soap
With moisturizing glycerin. 300 ml
226-408-0
reg. \$20
\$14.99

Hand Cream
With shea butter and antioxidants. 75 ml
222-938-5
reg. \$9
\$6.99



Senses Bubble Bath

700 ml
reg. \$16

\$9.99 each

- Vanilla Cream 225-970-7
- Lily & Honeysuckle Blossom 109-228-8
- Endless Ocean 109-260-1
- Lavender Garden 109-282-3
- Orange & Honeysuckle 226-408-6
- Soft Pink 109-260-2
- Cucumber Melon 226-404-4
- Cherry Blossom 109-259-8
- Sensitive Skin 225-970-5

soak
away
stress

Pump sold separately.

Original
With jojoba oil.
Fresh herbal scent.

Original Gelled Body Oil
Dries to a silky finish. 200 ml
225-599-3 reg. \$19
\$10.99

Original Bath Oil Spray
Locks in hydration. 150 ml
225-674-4 reg. \$20
\$11.99

Bonus-Size Original Bath Oil
Hydrates during or after
bath or shower. 739 ml
225-567-2 reg. \$42
\$26.99

Original Body Lotion
48-hour
moisture.
350 ml
226-457-0
reg. \$16
\$9.99

Soft & Sensual Body Lotion
48-hour
moisture.
350 ml
107-757-5
reg. \$16
\$9.99

Original Bath Oil
Hydrates
during
or after bath
or shower.
500 ml
225-567-3
reg. \$34
\$21.99

Soft & Sensual Bath Oil
Hydrates
during or
after bath
or shower.
500 ml
225-566-0
reg. \$34
\$21.99

Soft & Sensual
With argan oil.
Spicy floral scent.

Bonus-Size Soft & Sensual Bath Oil
Hydrates during or
after bath or shower.
739 ml 225-567-4
reg. \$42
\$26.99

Soft & Sensual Gelled Body Oil
Dries to a silky finish.
200 ml 226-454-2
reg. \$19
\$10.99

Sold
separately:
**Original Bath Oil
Spray Pump**
226-602-6
\$3.99

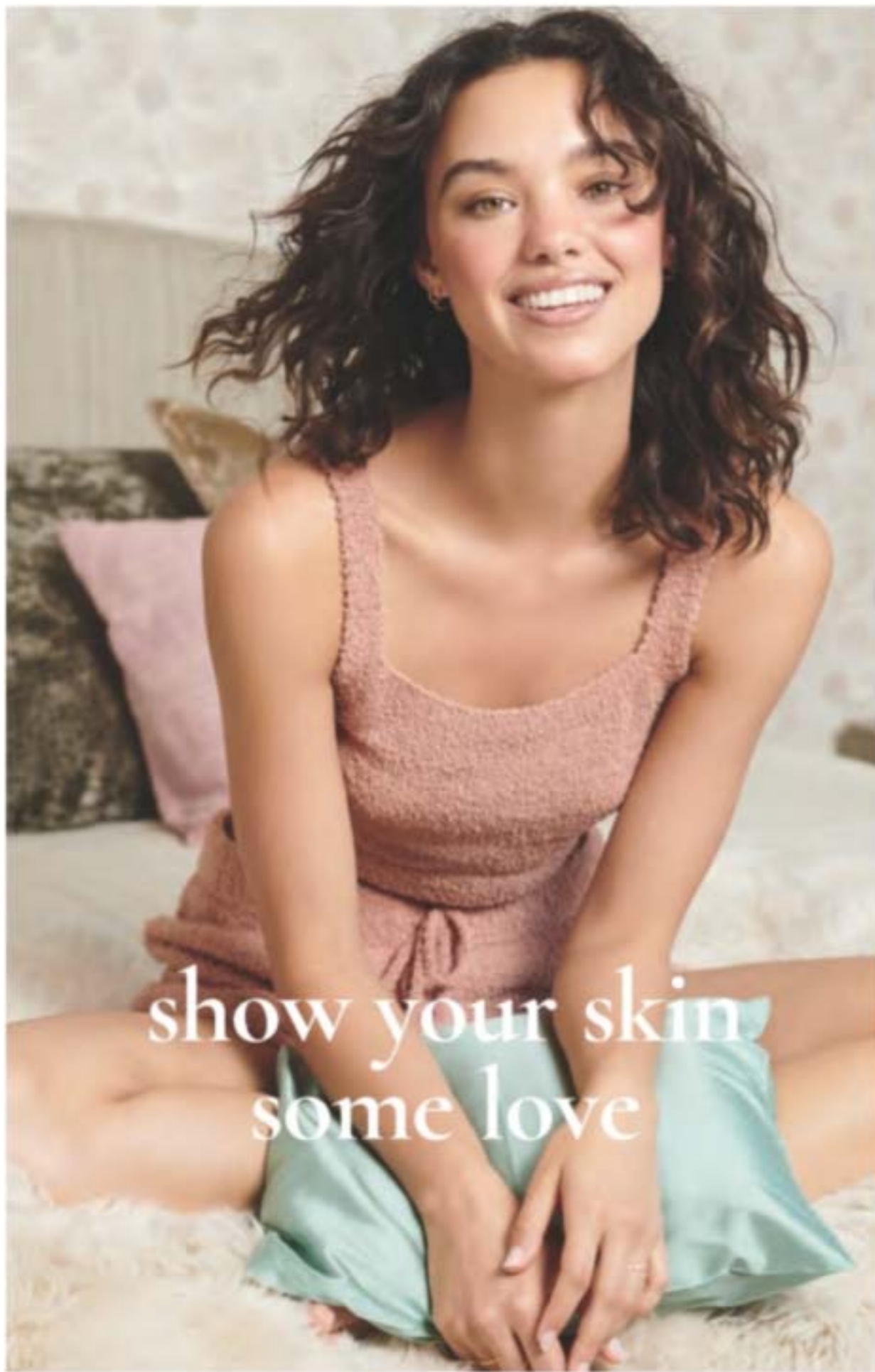
Bonus-Size Original Shower Gel
Gently
cleanses
and hydrates.
1 litre
225-969-4
reg. \$25
\$19.99

Bonus-Size Original Body Lotion
48-hour
moisture.
1 litre
226-504-9
reg. \$28
\$19.99
Pump sold
separately
(page 47).

Bonus-Size Soft & Sensual Shower Gel
Gently
cleanses
and hydrates.
1 litre
225-969-7
reg. \$25
\$19.99

Bonus-Size Soft & Sensual Body Lotion
48-hour
moisture.
1 litre
226-505-5
reg. \$28
\$19.99
Pump sold
separately.

Sold separately:
Bonus-Size Skin So Soft and Moisture Therapy Body Lotion Pump
226-602-2
\$3.99



show your skin
some love



Bonus-Size Radiant Moisture Bath Oil
Hydrates during or after bath or shower. 739 ml
225-599-4 reg. \$42
\$26.99



Bonus-Size Moisture Therapy Intensive Healing & Repair
72-hour moisture for extra-dry skin. Fragrance-free. 1 litre
226-456-4 reg. \$28
\$19.99
Pump sold separately.



Bonus-Size Moisture Therapy Daily Skin Defense
Helps restore moisture to everyday dry skin. 1 litre
226-455-9 reg. \$28
\$19.99
Pump sold separately.



Bonus-Size Moisture Therapy Calming Relief
Relieves dry, itchy skin. Fragrance-free. 1 litre
226-456-6 reg. \$28
\$19.99
Pump sold separately.



Bonus-Size Radiant Moisture Shower Gel
Gently cleanses and hydrates. 1 litre
225-969-9 reg. \$25
\$19.99

Moisture Therapy Intensive Healing & Repair Extra Strength Cream
24-hour moisturization. Fragrance-free. 150 g
101-614-5 reg. \$12
\$7.99



Moisture Therapy Balance + Soothe Body Lotion
Skin looks softer and healthier. 390 ml
222-431-8 reg. \$35
\$28

Moisture Therapy Balance + Soothe Body Wash
Softens as it gently cleanses. 390 ml
222-431-7 reg. \$33
\$25



Sold separately:
Bonus-Size Skin So Soft and Moisture Therapy Body Lotion Pump
226-602-2
\$3.99



Bonus-Size Supreme Nourishment Body Lotion
48 hours of moisture. 1 litre
226-506-2 reg. \$28
\$19.99
Pump sold separately.



Bonus-Size Radiant Moisture Body Lotion
48 hours of moisture. 1 litre
226-505-2 reg. \$28
\$19.99
Pump sold separately.



Sold separately:
Bonus-Size Skin So Soft and Moisture Therapy Body Lotion Pump
226-602-2
\$3.99

bee goodness for hair

With revitalizing honey, royal jelly and propolis (tree sap plus beeswax).



Elastine PropoliThera

Volumizing

Enhances texture. Hair looks fuller, thicker, stronger. 500 ml

A. Shampoo 222-244-8

B. Conditioner 222-244-9

Damage Repair

Helps hair appear smooth and manageable. 500 ml

C. Shampoo 226-136-9

D. Conditioner 226-137-0

E. Hair Oil Serum

Helps to strengthen, protect, moisturize and smooth hair, and to add shine.

170 ml **222-245-4**

F. Hair Mask

Enriched with nutrients to help deeply nourish hair and mend damaged split ends.

300 ml **226-137-1**

reg. \$26

\$22.49 each



Root Touch-Up
Instantly covers up roots and bare spots. With black bean and ginseng. Built-in mirror. 7 g reg. \$26

\$22 each



Reddish Brown 222-134-9
Light Brown 222-135-0
Dark Brown 222-135-2
Black 222-135-3



Advance Techniques 360 Nourish with Moroccan Argan Oil Leave-In Treatment

Moisturizes dry, damaged hair. With vitamins B and E. 60 ml **226-446-0**

reg. \$22.50

\$15.49



Elastine PropoliThera Leave-In Conditioner

Nourishes dry hair. With royal jelly. 240 ml **222-551-1**

reg. \$27

\$21



Advance Techniques Daily Shine Dry Ends Serum

Helps mend and nourish split ends instantly. With pro-vitamin B5. 60 ml **226-446-1**

reg. \$16

\$11.99



Advance Techniques Daily Shine 2-in-1 Shampoo & Conditioner

Leaves hair feeling clean, conditioned and frizz-free. With pro-vitamin B5. 350 ml **226-390-1**

reg. \$15

\$9.99

Skin So Soft Original Replenishing Hand Cream
100 ml 107-728-6
reg. \$7

Skin So Soft Radiant Moisture Replenishing Hand Cream
100 ml 226-456-7
reg. \$7

Skin So Soft Soft & Sensual Replenishing Hand Cream
100 ml 114-351-6
reg. \$7

Moisture Therapy Intensive Healing & Repair Hand Cream
125 ml 225-617-8
reg. \$9

Avon Care Silicone Glove Protective Hand Cream
100 ml 225-718-6
reg. \$9
\$3.99 each



24-hour odour protection

Roll-On Anti-Perspirant Deodorant
75 ml
reg. \$5
\$3.69 each



Senses Shower Gel Blushing Cherry Blossom
150 ml 225-971-1
reg. \$9
\$5.99



Senses Shower Gel Juicy Pomegranate & Mango
150 ml 108-471-4
reg. \$9
\$5.99



Senses Shower Gel Fresh Cucumber & Melon
150 ml 108-427-5
reg. \$9
\$5.99



Senses Shower Gel Silky Vanilla
150 ml 108-470-6
reg. \$9
\$5.99



Skin So Soft Original Shower Gel
150 ml 225-970-0
reg. \$12
\$5.99



Skin So Soft Soft & Sensual Shower Gel
150 ml 225-970-2
reg. \$12
\$5.99



Skin So Soft Radiant Moisture Shower Gel
150 ml 225-970-3
reg. \$12
\$5.99



Skin So Soft Supreme Nourishment Tropical Coconut Lip Balm
4.1 g 222-944-3
reg. \$3
\$1.99



Moisture Therapy Intensive Healing & Repair Moisturizing Lip Treatment Balm
4.1 g 226-451-8
reg. \$3
\$1.99



Perfumed Liquid Deodorant
Aluminum-free. Fast-drying. Easy fingertip application. Soft floral scent. 59 ml
298-088 reg. \$9
\$6.50

To order items on this page,
please go to avon.ca.



ceramide + biotin
Elastine Moisture Essentials
Volumizing Shampoo & Conditioner
375 ml each
\$25 total value
Both for \$13.99



ceramide + argan oil
Elastine Moisture Essentials
Shine Shampoo & Conditioner
375 ml each
\$25 total value
Both for \$13.99



Elastine Botanicals Rosemary & Sea Salt
Volumizing Shampoo & Conditioner
200 ml each
\$16 total value
Both for \$8.99



Elastine Botanicals Cherry Blossom & Hyaluronic Acid
Moisturizing Shampoo & Conditioner
200 ml each
\$16 total value
Both for \$8.99



Elastine Botanicals Argan & Castor
Anti-Frizz Shampoo & Conditioner
200 ml each
\$16 total value
Both for \$8.99

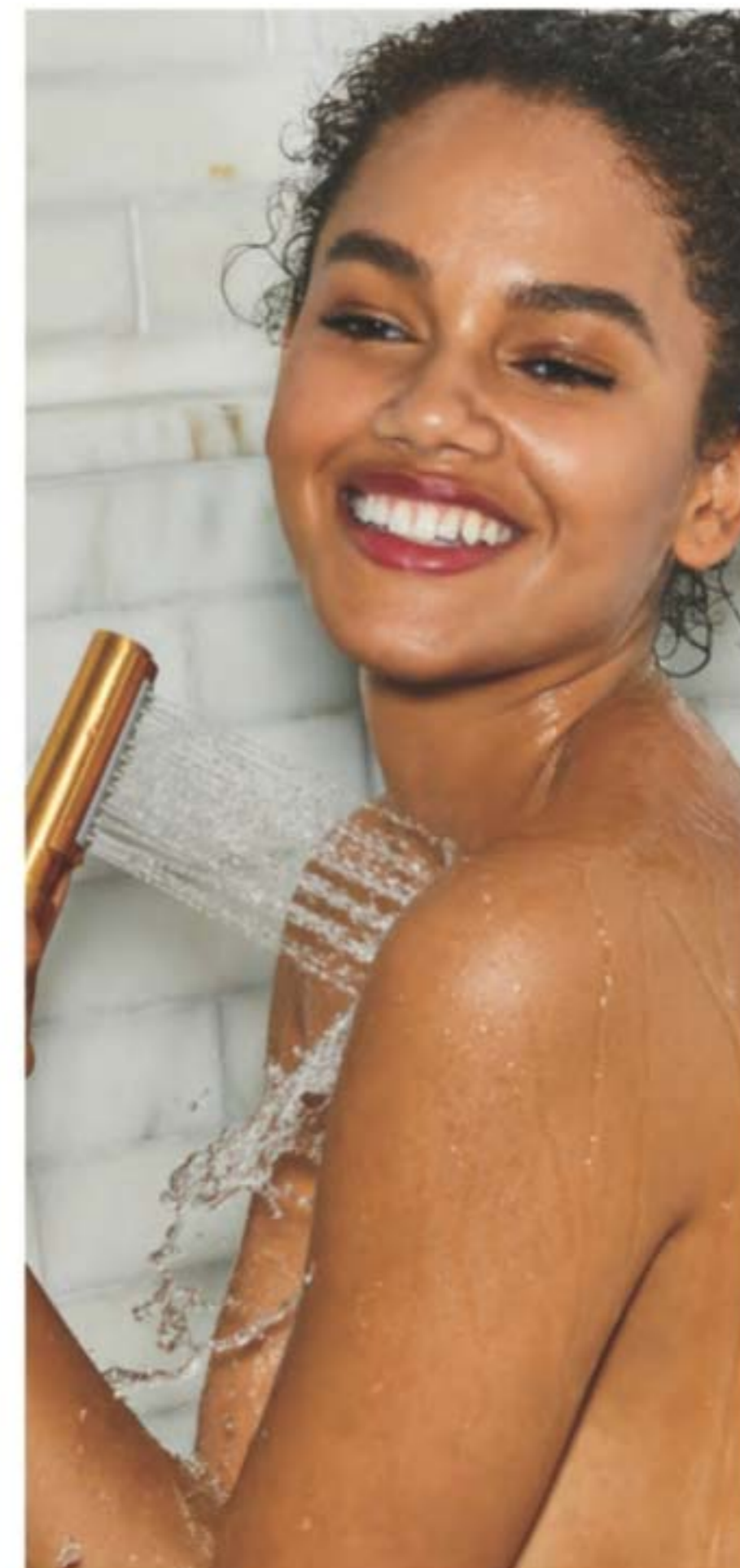
SENSES VANILLA SET

Silky Vanilla Hydrating Shower Gel
150 ml

Vanilla Cream Bubble Bath
700 ml

Avon Shower Brush
Long handle, and
massage nubs.

3-PIECE SET
\$21.99
\$39 VALUE



SKIN SO SOFT ORIGINAL SET

Bath Oil
500 ml

Body Lotion
350 ml

Shower Gel
150 ml

3-PIECE SET
\$27.99
\$62 VALUE



To order items on
this page, please
go to avon.ca.

in things for spring

Styles that are
fun, functional
and full of charm!



NEW

Eyeglass Chain

86 cm L with clasp closure and loops that fit most eyewear.

Crystal/Goldtone [with clear stones] 226-527-9

Filigree/Silvertone [with filigree floral accents] 226-527-8

Flower/Goldtone [with multicolour stones] 226-528-0

reg. \$24.99

\$19.99 each

NEW

Springtime Collection Silvertone.

Denim Butterfly Charm Watch

Denim-like strap,
23 cm L. Case with
butterfly charm,
23 mm x 25 mm.
Quartz movement.
Water-resistant to
3 ATM. 226-524-6

reg. \$68.99

\$54.99

Beaded Bracelet

With silvertone beads and
charm, and coloured glass
beads. Stretches to fit most.

reg. \$23.99

\$18.99 each

Earring Multipack

12-pair pack. Includes
clear and coloured cz's and
multicolour styles. Largest,
3 cm L. Pierced.

226-530-2

reg. \$32.99

\$24.99 the pack



Leaf/
Reconstituted Turquoise Beads
226-529-9

Flower/
Purple-Dyed Quartz Beads
226-530-0

Ladybug/
Coral-Dyed Quartz Beads
226-530-1

12-pair pack



delicate to dynamic

Intricate filigree designs and a shimmer of cascading colours.

necklace and earring set



9-pair pack



Filigree Collection
Metal tones.

Butterfly Necklace and Earring Set
Goldtone. Layered necklace, 61 cm L with 9 cm extender. Pendant, 3 cm L. Pierced drops, 2 cm L. **226-543-5**
reg. \$32.99
\$24.99 the set

Floral Cuff Watch
Rose goldtone. One size fits most. Hinged cuff. 32 mm diam. case. Water-resistant to 3 ATM. Quartz movement. **226-512-0**
reg. \$82.99
\$64.99

Butterfly Earring Multipack
9-pair pack in goldtone. Studs with cz's, glass stones or acrylic beads. Largest drops, 3 cm L. Pierced. **226-543-6**
reg. \$28.99
\$21.99 the pack



Multi-Beaded Collection
Goldtone with a mix of purple, green, burgundy and champagne glass and acrylic beads.

Statement Necklace
Three layers. 42 cm L with 9 cm extender. **226-526-5**
reg. \$45.99
\$35.99

Drop Earrings
5 cm L. Pierced. **226-526-6**
reg. \$18.99
\$14.99

Stretch Bracelet
One size fits most. **226-526-7**
reg. \$28.99
\$21.99

signs of the season

Get in the spirit of spring with sweet symbols and standout statements.



NEW

Trendsetter Stretch Ring

Goldtone with clear stone accents. (Butterfly also has multicolour stone accents.) Stretches to fit most.

Flower 226-530-3

Heart 226-530-5

Butterfly 226-530-4

reg. \$23.99

\$18.99 each



Flower Power Collection Metal tones.

A. Open Earrings

Goldtone. Pierced drops, 4 cm L. 226-524-5
reg. \$24.99

\$19.99

B. Metal Earrings

Silvertone. Pierced drops, 3 cm L. 226-524-4
reg. \$24.99

\$19.99

C. Pull-Cord Bracelet

Adjusts to fit most.
Purple/Goldtone (flower) 226-525-8
Navy/Silvertone (butterfly) 226-525-9
Ivory/Goldtone (heart) 226-526-0
reg. \$18.99

\$14.99 each

STUDIO
1886

easy breezy

Lightweight fabrics with spring-ready eyelets, flowy fits and open-knit details to help you ease into the season.



WOVEN EYELET SLEEVES with rib cuffs

RIB KNIT perfect for the transitional temps

SHIRTTAIL HEM with a subtle curve for a finished look

NEW

◆ Eyelet Sleeve Top

Green rib-knit top with round neckline, long sleeves with woven eyelet detail and rib cuffs and shirrtail hem. Body: polyester/spandex; sleeves: 100% cotton. Centre back length: 64 cm on M; 67 cm on 1X. Machine wash, line dry.

XS(0-2) 226-533-5	M(8-10) 226-533-7	XL(16) 226-533-9	2X(22W-24W) 226-534-1
S(4-6) 226-533-6	L(12-14) 226-533-8	1X(18W-20W) 226-534-0	3X(26W-28W) 226-534-2

reg. \$70.99

\$56.99

2-PIECE SET



CHEST POCKETS with goldtone stud detail

LONG SLEEVES have functional tab with goldtone button

NEW

◆ 2-Piece Spring Pant Set

Navy top with split-front neckline with notch detail, chest pockets with goldtone studs, long sleeves with goldtone button tab and side slits. Matching pull-on straight-leg pants with elastic waistband and side seam pockets. Centre back length: 66 cm on M; 71 cm on 1X. Inseam: 75 cm on all sizes. Machine wash, line dry.

XS(0-2) 226-534-3	XL(16) 226-534-7
S(4-6) 226-534-4	1X(18W-20W) 226-534-8
M(8-10) 226-534-5	2X(22W-24W) 226-534-9
L(12-14) 226-534-6	3X(26W-28W) 226-535-0

reg. \$89.99

\$72.99 the set

NEW

◆ Lace-Up Mesh Sneakers

White lace-up mesh sneakers with goldtone shoelace eyelets. Man-made materials.

6 226-544-6 8 226-544-8 10 226-545-0
7 226-544-7 9 226-544-9 11 226-545-1

reg. \$52.99

\$42.99

GOLDTONE SHOELACE EYELETS for a fun contrasting pop



STRAIGHT LEG FIT that's flowy and flattering

spring sweater weather

LIGHTWEIGHT LAYER in 100% cotton

OPEN-KNIT DESIGN in alternating patterns



NEW

❖ Open-Knit Sweater

Tan open-knit sweater with round neckline and long sleeves. 100% cotton. Centre back length: 58 cm on M; 66 cm on 1X. Hand wash, dry flat.
 XS(0-2) 226-535-1 M(8-10) 226-535-3 XL(16) 226-535-5 2X(22W-24W) 226-535-7
 S(4-6) 226-535-2 L(12-14) 226-535-4 1X(18W-20W) 226-535-6 3X(26W-28W) 226-535-8
 reg. \$79.99
\$63.99

TIE WITH TASSEL DETAIL to wear open or closed

BUBBLE SLEEVES with decorative button cuffs



go with the flow

❖ Novelty Peasant Blouse

Black top with white printed floral panels on front, split neckline with tie and tassel detail, and long bubble sleeves with decorative button cuffs. 100% polyester. Centre back length: 64 cm on M; 67 cm on 1X. Machine wash, line dry.
 XS(0-2) 226-531-0
 S(4-6) 226-531-1
 M(8-10) 226-531-2
 L(12-14) 226-531-3
 XL(16) 226-531-4
 1X(18W-20W) 226-531-5
 2X(22W-24W) 226-531-6
 3X(26W-28W) 226-531-7
 reg. \$66.99
\$53.99

ABSTRACT GEO PRINT a bold pattern that's not over-the-top in classic black and white

RUFFLE HEM for fun and flirty flair



graphic & classic

❖ Geo Printed Dress

Black-and-white geo-print dress with round neckline, long sleeves with elastic cuffs and ruffle hem. Body: 100% rayon; lining: 100% polyester. Centre back length: 89 cm on M; 91 cm on 1X. Machine wash, line dry.
 XS(0-2) 226-531-9
 S(4-6) 226-532-0
 M(8-10) 226-532-1
 L(12-14) 226-532-2
 XL(16) 226-532-3
 1X(18W-20W) 226-532-4
 2X(22W-24W) 226-532-5
 3X(26W-28W) 226-532-6
 reg. \$90.99
\$70.99

CREW NECKLINE makes this tee ideal for layering or wearing alone

4-PACK

CUTE POLKA DOT PATTERN along with go-to solid colour options

SLIGHT CURVED HEM for subtle movement

◆ **4-Pack of Spring Tees**
Includes white with black polka dots, violet with white polka dots, solid white and solid light-blue tees with crew neck, short sleeves and slight curved hem. Cotton/polyester. Centre back length: 64 cm on M; 69 cm on 1X. Machine wash, dry flat.
XS(0-2) 226-430-6 XL(16) 226-431-0
S(4-6) 226-430-7 1X(18W-20W) 226-431-1
M(8-10) 226-430-8 2X(22W-24W) 226-431-2
L(12-14) 226-430-9 3X(26W-28W) 226-431-3
reg. \$74.99

\$59.99 the pack

easy chic

PEAK LAPEL with one-button closure

TEXTURED KNIT with flattering princess seams



APPAREL SIZE CHART (IN CM)

SIZE	BUST	WAIST	HIP
XS 0/2	77 - 81	60 - 64	83 - 86
S 4/6	85 - 89	67 - 71	90 - 94
M 8/10	93 - 97	75 - 79	98 - 102
L 12/14	100 - 104	83 - 86	105 - 109
XL 16	109 - 112	90 - 93	113 - 116
1X 18W/20W	118 - 123	99 - 104	122 - 127
2X 22W/24W	128 - 133	109 - 114	132 - 137
3X 26W/28W	138 - 144	119 - 124	142 - 147

◆ **Soft Knit Blazer**

Black textured knit blazer with princess seams, peak lapel with one-button closure and long sleeves. Polyester/spandex. Centre back length: 66 cm on M; 69 cm on 1X. Machine wash, hang dry.
XS(0-2) 226-532-7 L(12-14) 226-533-0 2X(22W-24W) 226-533-3
S(4-6) 226-532-8 XL(16) 226-533-1 3X(26W-28W) 226-533-4
M(8-10) 226-532-9 1X(18W-20W) 226-533-2
reg. \$78.99

\$63.99



Anew Ultimate Multi-Performance Eye System
Cream, 15 g; Elixir, 2.5 g.
226-046-3
reg. \$59
\$36.99



Anew Ultimate Multi-Performance Night Cream
50 g 226-044-8
reg. \$59
\$36.99



Anew Ultimate Night Repair Serum
30 ml 224-621-9
reg. \$63
\$38.99



Isa Knox Anew Clinical Collagen Booster Eye Lift Pro Dual Eye System
Gel, 10 ml; Cream, 10 ml
225-718-1
reg. \$56
\$33.99



Isa Knox Anew Clinical Collagen Booster Firming Cream
50 ml 226-035-4
reg. \$65
\$39.99



Anew Ultimate Supreme Dual Elixir
Serum/Oil, 20 ml each.
222-400-7
reg. \$84
\$55



Anew Ultimate Supreme Advanced Performance Crème
50 g 226-055-8
reg. \$84
\$55



Anew Ultimate Supreme Eye Balm
2.9 g 224-621-8
reg. \$63
\$38.99



Isa Knox Anew Clinical Collagen Booster Microneedling Polisher
50 ml 221-459-9
reg. \$48
\$27.99



Isa Knox Anew Clinical Collagen Booster Rejuvenating Serum Ampoules
60 capsulated single-use ampoules, 0.22 ml each.
221-391-4 reg. \$88
\$69.99



Isa Knox Anew Clinical Revitalize & Reveal Advanced Wrinkle Corrector
50 ml 226-060-2
reg. \$56
\$33.99



Anew Platinum Eye & Lip Cream
15 g 226-046-5
reg. \$59
\$36.99



Anew Platinum Firm and Sculpt Cream for Neck and Chest
50 g 226-045-1
reg. \$59
\$36.99



Anew Platinum Night Cream
50 g 226-044-9
reg. \$59
\$36.99



Isa Knox Anew Clinical Revitalize & Reveal Resurfacing Lotion for Body
150 ml 223-261-2
reg. \$48
\$27.99



Isa Knox Anew Clinical Revitalize & Reveal Extra Strength Retexturizing Peel
30 fragrance-free pads, 5 cm diam.
226-067-3 reg. \$56
\$33.99



Isa Knox Anew Clinical Revitalize & Reveal Resurfacing Expert Smoothing Fluid
30 ml 226-082-2
reg. \$62
\$38.99



Anew Platinum Age Delay Serum
30 ml 224-622-0
reg. \$63
\$38.99



Anew Platinum Sculpting Body Serum
200 ml 226-033-0
reg. \$63
\$38.99



Anew Power Serum
30 ml 106-273-6
reg. \$63
\$38.99



Isa Knox Anew Clinical Line Eraser with Retinol [1.0%] Advanced Retinol Serum
30 ml 223-424-8
reg. \$72
\$55.99



Isa Knox Anew Clinical Line Eraser with Retinol Treatment
30 g 226-060-0
reg. \$63
\$39.99



Isa Knox Anew Clinical Line Eraser with Retinol Targeted Treatment
20 ml 226-061-1
reg. \$56
\$33.99



**Anew Vitamin C
Illuminating Priming
Moisturizer**
50 ml 226-056-0
reg. \$48
\$26.99



**Anew Vitamin C
Brightening Serum**
30 ml 225-768-0
reg. \$62
\$34.99



**Isa Knox LXNEW Clean
Nourishing Cream
Cleanser**
150 ml 222-986-2
reg. \$18
\$14.99



**Anew Vitamin C
Nourishing Body Butter**
230 ml 225-903-7
reg. \$45
\$24.99



**Anew Vitamin C
Glow Body Scrub**
255 g 224-623-6
reg. \$50
\$28.99



**Isa Knox LXNEW Clean
Soothing Whipped Oil
Cleanser**
150 ml 223-124-6
reg. \$24
\$18.99



**Anew Hydra Fusion
1.5% Hyaluronic Acid Serum**
30 ml 226-083-8
reg. \$62
\$34.99



**Anew Hydra Fusion
De-Puffing Eye Serum**
15 ml 226-060-3
reg. \$48
\$26.99



**Anew Vitamin C
Brightening Eye Cream**
15 ml 226-055-9
reg. \$48
\$26.99



**Anew Vitamin C
Antioxidant Lip Treatment**
3.8 g 222-256-6
reg. \$20
\$11.99



**Anew Hydra Fusion
Cleansing Micellar Water**
300 ml 226-055-3
reg. \$20
\$12.99



**Anew Hydra Fusion
Nighttime Facial Treatment**
50 ml 226-083-9
reg. \$48
\$26.99



**Anew Hydra Fusion
Gel Cream**
50 g 226-055-5
reg. \$48
\$26.99



Farm Rx Bakuchiol Eye Cream
30 ml 223-643-8
reg. \$53
\$39.99



Farm Rx Bakuchiol Cream
90 ml 224-113-1
reg. \$63
\$45.99



Rice Water Bright Foaming Cleanser
300 ml
221-900-0
reg. \$19
\$16



Farm Rx Bakuchiol Serum
30 ml 223-643-7
reg. \$63
\$45.99



Farm Rx Super Greens Cooling Gel
90 ml 223-642-5
reg. \$53
\$39.99



Farm Rx Super Greens Multivitamin Moisture Cream
90 ml 223-642-6
reg. \$53
\$39.99



Rice Water Bright Rice Bran Gentle Exfoliating Cleanser
300 ml
223-093-3
reg. \$23
\$19



Rice Water Bright Cleansing Facial Wipes
50 wipes.
221-900-8
reg. \$16
\$13



Farm Rx Super Greens Refreshing Eye Cream
30 ml 225-599-0
reg. \$44
\$32.99



Farm Rx Super Greens Refreshing Gel Cleanser
240 ml 224-108-4
reg. \$35
\$24.99



Avon Solutions Nurtura Replenishing Cream
50 ml 226-045-8
reg. \$20
\$12



Rice Water Bright Facial Cleansing Lotion
200 ml
225-531-3
reg. \$18
\$14.99



Rice Water Bright Light Facial Cleansing Oil
150 ml
225-531-8
reg. \$20
\$16.99



Avon Solutions Banishing Cream Skin Discoloration Improver
75 ml 226-059-8
reg. \$20
\$12



Avon Solutions Anti-Aging Cream
50 ml 226-059-5
reg. \$20
\$12



Avon Solutions Dramatic Firming Cream
50 ml 226-059-9
reg. \$20
\$12



Rice Water Bright Mild Cleansing Water
500 ml
224-135-7
reg. \$20
\$17



Rice Water Bright Facial Massage Cream
200 ml
224-113-9
reg. \$34
\$26



Far Away
Eau de Parfum
50 ml 223-198-3
reg. \$35
\$24.99



Far Away
Hair and Body Mist
96 ml 223-058-6
reg. \$22
\$16.99



Far Away
Body Scrub & Wash
200 ml 225-001-2
reg. \$17
\$13.99



Rare Gold
Eau de Parfum
50 ml 102-456-9
reg. \$35
\$24.99



Rare Amethyst
Eau de Parfum
50 ml 102-456-8
reg. \$35
\$24.99



Imari Seduction
Eau de Toilette
50 ml 220-270-2
reg. \$35
\$24.99



Far Away
Body Lotion
200 ml 225-718-7
reg. \$17
\$8.99



Far Away
Hand Cream
75 ml 225-580-4
reg. \$10
\$6.99



Far Away Bali
Eau de Parfum
50 ml 223-059-2
reg. \$35
\$24.99



Imari Amor
Eau de Parfum
50 ml 224-353-2
reg. \$35
\$24.99



Imari
Eau de Toilette
50 ml 222-370-1
reg. \$35
\$24.99



Haiku Reflection
Eau de Parfum
50 ml 115-861-8
reg. \$35
\$24.99



Far Away Gold
Eau de Parfum
50 ml 223-197-1
reg. \$35
\$24.99



Far Away Infinity
Eau de Parfum
50 ml 223-197-4
reg. \$35
\$24.99



Rare Pearls
Eau de Parfum
50 ml 223-987-9
reg. \$35
\$24.99



Haiku Kyoto Flower
Eau de Parfum
50 ml 435-140
reg. \$35
\$24.99



Haiku
Eau de Parfum
50 ml 220-269-8
reg. \$35
\$24.99



Haiku
Hair and Body Mist
96 ml 223-058-7
reg. \$22
\$16.99



Rare Pearls
Hair and Body Mist
96 ml 223-058-8
reg. \$22
\$16.99



Rare Pearls
Body Lotion
200 ml 225-725-4
reg. \$17
\$8.99



Rare Pearls
Hand Cream
75 ml 225-580-3
reg. \$10
\$6.99



Haiku
Body Scrub & Wash
200 ml 225-001-0
reg. \$17
\$13.99



Haiku
Body Lotion
200 ml 225-619-3
reg. \$17
\$8.99



Haiku
Hand Cream
75 ml 225-580-2
reg. \$10
\$6.99



LYRD Honeysuckle Blossom
Eau de Parfum
50 ml 223-300-7
reg. \$42
\$28



LYRD Peony Rosé
Eau de Parfum
50 ml 223-300-5
reg. \$42
\$28



LYRD Oud Rose
Eau de Parfum
50 ml 223-185-0
reg. \$52
\$42



Black Suede
Eau de Toilette
100 ml 223-988-3
reg. \$32
\$19.99



Black Suede
Hair and Body Wash
150 ml 225-959-4
reg. \$12
\$5.99



Black Suede
Aftershave Conditioner
100 ml 226-245-6
reg. \$12
\$5.99



Live Out Loud
Eau de Parfum
50 ml 221-142-5
reg. \$56
\$35



Live Out Loud #4U
Eau de Parfum
50 ml 225-515-5
reg. \$56
\$35



Today
Eau de Parfum
50 ml 836-39
reg. \$42
\$32



Black Suede Bar Soap
90 g 224-707-2
reg. \$9
\$5.99



Avon Exploration
Eau de Toilette
75 ml 122-508-2
reg. \$35
\$24.99



Wild Country
Cologne
88 ml 836-47
reg. \$32
\$19.99



Mesmerize Cologne
100 ml 222-370-2
reg. \$35
\$24.99



Mesmerize Black
Eau de Toilette
100 ml 108-628-3
reg. \$35
\$24.99



Perceive Cologne
100 ml 831-73
reg. \$35
\$24.99



Black Suede Bar Soap
90 g 224-707-2
reg. \$9
\$5.99



Avon Exploration
Eau de Toilette
75 ml 122-508-2
reg. \$35
\$24.99



Wild Country
Cologne
88 ml 836-47
reg. \$32
\$19.99



Alpha
Eau de Toilette
100 ml 104-118-3
reg. \$35
\$24.99



Studio 1886 Gentleman
Eau de Toilette
50 ml 225-000-9
reg. \$70
\$54.99



Studio 1886 Gentleman
Aftershave Lotion
200 ml 225-593-0
reg. \$23
\$19.99



Wild Country
Aftershave Splash
118 ml 222-574-4
reg. \$19
\$14.99



Wild Country
Hair and Body Wash
150 ml 225-959-3
reg. \$12
\$5.99



Wild Country Bar Soap
90 g 224-707-3
reg. \$9
\$5.99



**Timeless Avon Classics Collection
Eau de Cologne Spray**
50 ml 110-373-1
reg. \$26
\$15.99



**Timeless Avon Classics Collection
Hand Cream**
75 ml 224-092-0
reg. \$9
\$5.99



Timeless Perfumed Skin Softener
150 ml
222-623-1
reg. \$12
\$6.99



Haiku Perfumed Skin Softener
150 ml
222-702-2
reg. \$12
\$6.99



**Dreamlife Avon Classics
Collection Eau de Cologne Spray**
50 ml 224-615-4
reg. \$26
\$15.99



**Sweet Honesty Avon Classics
Collection Eau de Cologne Spray**
50 ml 110-437-8
reg. \$26
\$15.99



**Sweet Honesty Avon Classics
Collection Hand Cream**
75 ml 224-092-1
reg. \$9
\$5.99



Sweet Honesty Perfumed Skin Softener
150 ml
222-623-0
reg. \$12
\$6.99



Imari Perfumed Skin Softener
150 ml
222-701-8
reg. \$12
\$6.99



**Topaze Avon Classics Collection
Eau de Cologne Spray**
50 ml 223-321-3
reg. \$26
\$15.99



**Night Magic Avon Classics
Collection Eau de Cologne Spray**
50 ml 110-300-9
reg. \$26
\$15.99



**Night Magic Avon Classics
Collection Hand Cream**
75 ml 224-092-2
reg. \$9
\$5.99



**Night Magic Evening Musk
Perfumed Skin Softener**
150 ml 224-823-1
reg. \$12
\$6.99



Far Away Perfumed Skin Softener
150 ml
222-702-0
reg. \$12
\$6.99



**Free O₂
Eau de Toilette Spray**
50 ml 222-618-9
reg. \$26
\$15.99



**Odyssey Avon Classics Collection
Eau de Cologne Spray**
50 ml 110-321-2
reg. \$26
\$15.99



**Candid Avon Classics Collection
Eau de Cologne Spray**
50 ml 110-321-3
reg. \$26
\$15.99



Odyssey Perfumed Skin Softener
150 ml
224-824-1
reg. \$12
\$6.99



Candid Perfumed Skin Softener
150 ml
222-623-3
reg. \$12
\$6.99



- | | | | | | | | | |
|--------------------------|-----------------------|---|----------------------------|--------------------------|------------------------|-------------------------------|---------------------------|-------------------------|
| | | | | | | | | |
| Wild Cherry
224-849-8 | Blaze
222-948-3 | Constellation
(Shimmer)
224-850-0 | Stellar
225-661-3 | Honeyflower
225-661-2 | Poppy
222-948-5 | Aster
224-849-7 | Desert Moon
224-850-3 | Windstorm
222-947-3 |
| | | | | | | | | |
| Equinox
224-850-4 | Twilight
224-850-5 | Cyclone
222-947-6 | Sierra Sunset
222-947-7 | Luna
222-947-8 | Wildrose
222-948-9 | Plum Blossom
224-850-2 | Dahlia
225-661-1 | Rose Angel
222-948-6 |
| | | | | | | | | |
| Aurora
225-661-4 | Hibiscus
222-948-7 | Wildflower
222-948-8 | Eclipse
224-849-6 | Tulip
224-849-9 | Celestial
222-948-0 | Morning
Glory
224-850-1 | Violet Night
222-949-0 | |

**fmg Glimmer
Satin Lipstick**
3 g
reg. \$17
\$12.99



- | | | | |
|------------------------|--------------------|-----------------------|------------------------|
| | | | |
| Aubergine
225-663-7 | Taupe
224-972-6 | Espresso
224-973-1 | Buff
224-972-5 |
| | | | |
| Rosewood
224-972-8 | Blush
224-973-0 | Berry
224-972-9 | Smokeshow
225-663-9 |
| | | | |
| Mauve
224-972-7 | Moss
225-661-9 | PeriWink
225-663-8 | Azure
224-973-2 |

**fmg CathyCat
Shadow Gaze Matte Color Stick**
1.35 g
reg. \$27
\$20.99



Essential Eyes
226-127-5



Enchanted Eyes
226-127-4

**fmg Cashmere
Eyeshadow Palette**
18 g reg. \$58
\$48



- | | |
|--------------------------|----------------------------|
| | |
| Lovin' Life
225-716-2 | Birthday Suit
225-716-4 |
| | |
| PYT
225-716-3 | Surprise!
225-716-5 |
| | |
| Fine Wine
225-716-6 | Birthday Post
225-716-7 |

**fmg Glimmer Birthday
Balm Lip Crayon** 2.7 g
reg. \$21
\$15.99



- | | |
|---------------------------|--------------------------|
| | |
| Love Affair
225-989-5 | Pucker Up
225-989-0 |
| | |
| Secret Crush
225-989-2 | Rendezvous
225-989-3 |
| | |
| Tease
225-989-1 | Flirtatious
225-989-4 |

fmg LOVE Lip Butter
2.7 g
reg. \$26
\$19.99



- | | | | |
|---|---|---|--|
| | | | |
| MATTE SATEEN
Citrine
222-434-6 | MATTE SATEEN
Pink Sapphire
222-434-5 | MATTE SATEEN
Tiger's Eye
222-434-8 | MATTE SATEEN
Jasper
222-434-7 |
| | | | |
| SHIMMER
Pink Topaz
221-851-3 | SHIMMER
Crystal Lilac
221-851-1 | SHIMMER
Rose Gold
221-139-8 | SHIMMER
Bronze Age
221-139-9 |
| | | | |
| GLITTER
Peach Sapphire
221-139-4 | GLITTER
Fool's Gold
221-139-6 | GLITTER
Ultramarine
221-138-9 | |

**fmg Glimmershadow
Liquid Eyeshadow**
2 ml reg. \$17
\$12.99



- | | | |
|---------------------------|------------------------------|------------------------|
| | | |
| Plum Jam
226-438-4 | Cherry Crush
226-438-2 | Pink Fizz
226-438-3 |
| | | |
| Crazy Rabbit
224-860-2 | Sour Candy
224-860-1 | |
| | | |
| Felt Pink
224-860-0 | Blackberry Bite
224-860-4 | |

**TPSY
Forever Lip Marker**
2.5 ml
reg. \$24
\$18.99



- | |
|--------------------------|
| |
| Love Galore
224-859-8 |

**TPSY
Shiny Lip Oil**
3.7 g
reg. \$24
\$18.99



- | | | | | |
|-------------------------------------|-----------------------------------|-------------------------------------|-----------------------------------|------------------------------------|
| | | | | |
| MATTE Calypto
225-660-8 | MATTE Tigress
225-660-9 | MATTE Bombshell
225-660-7 | MATTE Icon
225-661-0 | MULTI Goddess
223-183-5 |
| | | | | |
| MULTI Muse
223-181-8 | MULTI Minx
223-183-3 | MULTI Maven
223-183-2 | MULTI Siren
223-183-7 | MULTI Mistress
223-183-0 |
| | | | | |
| MULTI Temptress
223-183-1 | MULTI Idol
223-183-4 | MULTI Vixen
223-183-6 | MULTI Darling
223-181-9 | |

**fmg Glimmer
Eyeshadow Quad**
6 g
reg. \$22
\$16.99



		
Blackest Black 223-259-0	Saturn Grey 223-258-6	Majestic Plum 223-258-5
		
Cosmic Brown 223-258-9	Starry Night 223-258-8	Emerald Green 223-258-7


fmg Glimmer Cream Eyeliner
0.28 g
reg. \$13
\$5.99




			
Honey Peach 223-255-4	Lava Red 223-255-5	Passion Red 223-255-3	Red Brick 223-256-0
			
Mystery Mauve 223-256-1	Candy Apple 223-255-6	Pink Bouquet 223-255-9	Merlot 223-255-7
			
Au Naturel 223-255-8	Simply Spice 223-256-2	Chocolate 223-256-3	Perfect Plum 223-256-4

fmg Glimmer Lipliner
0.28 g
reg. \$13
\$5.99




	
Blonde 223-284-4	Soft Brown 223-284-5
	
Medium Brown 223-284-6	Brown Black 223-284-7

fmg Colors of LOVE Hi-Brow Tinted Brow Gel
3.3 ml
reg. \$26
\$19.99



fmg Colors of LOVE Hi-Brow Sculpting Brow Gel
3.3 ml
224-555-6
reg. \$26
\$19.99



		
Black Ice 223-258-0	Sterling 223-258-3	Smoky Diamond 223-257-6
		
Sugar Plum 223-258-1	Purple Rain 223-258-4	Brown Sugar 223-257-8
		
Twilight Sparkle 223-257-7	Olive 223-258-2	Teal Sparkle 223-257-9

fmg Glimmer Diamond Eyeliner
0.28 g
reg. \$13
\$5.99



			
Blackest Night 223-252-5	Smoky Grey 223-252-7	Raisin 223-252-8	Brown Chocolate 223-252-4
			
Midnight Blue 223-252-6	Blue Skies 223-252-9	Seafoam Green 223-253-0	


fmg Glimmer Waterproof Eyeliner
0.28 g
reg. \$13
\$5.99




Blackest Black 225-679-9

fmg LOVE at 1st Lash Mascara
9 ml
reg. \$26
\$19.99




Waterproof Blackest Black 226-029-8

fmg LOVE at 1st Lash Waterproof Mascara
8.5 ml
reg. \$26
\$19.99




Rich Black 224-700-0

fmg Cashmere Ultimate Volume Mascara
8 ml
reg. \$33
\$25.99



	
Light Blonde 223-412-6	Blonde 223-412-7
	
Tawny 223-412-8	Light Brown 223-413-0
	
Dark Brown 223-412-9	Brunette 223-413-1

fmg Glimmer Brow Definer
0.28 g
reg. \$13
\$5.99



	
Black 224-700-2	Black Brown 224-701-4

fmg Glimmer Always On Point Eyeliner
0.25 g
reg. \$15
\$11.99




Blackest Black 223-883-9

fmg Glimmer Liquid Eyeliner
1.1 ml
reg. \$18
\$14.99




Black 225-983-2

fmg Glimmer Wash-Off Waterproof Mascara
6 g
reg. \$17
\$12.99



	
Black 225-983-9	Brown Black 225-984-0

fmg Glimmer SuperExtend Nourishing Mascara
7 ml
reg. \$19
\$14.99




Black 225-983-8

fmg Glimmer SuperShock Volumizing Mascara
10 ml
reg. \$19
\$14.99





		
Fair 223-965-0	Fair Light 223-965-1	Light 223-965-2
		
Light Medium 223-965-3	Soft Medium 223-965-4	Medium 223-965-5
		
Medium Deep 223-965-6	Tan Deep 223-965-7	Deep 223-965-8

fmg Match Filter Serum Tint Foundation
9 g
reg. \$30
\$22.99



fmg Match Set Finishing Powder
6.5 g 224-487-0
reg. \$27
\$20.99



	
Prosecco 225-930-1	Rosé 225-930-2


fmg Glimmer Powder Illuminator
10 g
reg. \$20
\$15.99












fmg GLOKOLOR Lip Serum Pencil
1.8 g 225-634-9
reg. \$29
\$23



fmg Match Prime Face Perfector
30 ml
226-480-1
reg. \$24
\$18.99



		
Fair 225-676-5	Fair Light 225-676-6	Light 225-676-7
		
Light Medium 225-676-8	Soft Medium 225-676-9	Medium 225-677-0
		
Medium Deep 225-678-3	Tan Deep 225-679-0	Deep 225-679-1

fmg Match Tint Radiant Tinted Moisturizer
30 ml
reg. \$20
\$15.99



	
Petal Pink 224-958-7	Pink Passion 224-958-8

fmg Glimmer Powder Blush
8 g
reg. \$20
\$15.99



fmg GLOKOLOR Hybrid Face Primer
30 ml 225-725-6
reg. \$35
\$29

		
Sherbet: neutralizes dark circles & marks 225-818-3	Gelato: brightens dullness 225-818-1	Pistachio: neutralizes redness 225-817-9



fmg Match Wand Correcting Stick
6 g
reg. \$26
\$19.99



fmg Cashmere Under Eye Primer
9 g
224-948-4
reg. \$35
\$26.99


Plumeria 224-975-0

Rosette 224-974-9




fmg Glimmer Lip & Cheek Stain
5.5 ml
reg. \$24
\$18.99

	
Icy Petal 225-062-5	Blushing Nude 225-062-7
	
Golden Rose 225-062-3	Tropical Peach 225-063-8
	
Crushed Berry 225-063-6	



fmg Glimmer Be Blushed Cheek Color
4 g
reg. \$21
\$15.99



fmg GLOKOLOR Hybrid Face Mist
80 ml 225-725-5
reg. \$35
\$29



fmg Vanity Organizer
24 cm L x 15 cm W x 13 cm H.
Polyester. 225-067-5
reg. \$43
\$33.99



fmg Makeup Remover Wipes
Resealable pack of 24 wipes.
225-523-0
reg. \$14
\$10.99



fmg Set & Fix Spray
50 ml
226-042-9
reg. \$21
\$13.99



fmg Kabuki Brush
10 cm L x 3 cm diam.
223-424-7
reg. \$28
\$20.99



fmg Eyeshadow Blending Brush
15 cm L. 224-615-9
reg. \$22
\$16.99



fmg Blush & Contour Brush
18 cm L. 224-615-8
reg. \$32
\$24.99



fmg Moisturizing Eye Makeup Remover Lotion
75 ml 225-745-7
reg. \$12
\$7.99



fmg Waterproof Lip & Eye Makeup Remover
110 ml 226-026-1
reg. \$17
\$11.99



fmg Express Makeup Brush Wash
30 ml 225-595-0
reg. \$20
\$15.99



fmg Complexion Blending Brush
17 cm L. 224-615-6
reg. \$33
\$25.99



fmg Precision Eye Brush
13 cm L. 224-615-5
reg. \$22
\$16.99



Daily Beauty Tools Tweezers
9 cm L. 224-612-4
reg. \$6
\$4.99



fmg Oil Rewind Roller Ball
8 cm L x 3 cm W. 225-664-7
reg. \$26
\$19.99



fmg Flawless Complexion Sponge
6 cm L x 4 cm W. 225-067-4
reg. \$14
\$10.99



fmg Unready Makeup Remover Cloth
25 cm sq. 225-664-6
reg. \$20
\$15.99



fmg Glimmer Nail Lacquer Eraser Pen
4 ml 224-101-7
reg. \$17
\$12.99



fmg Glimmer Nail Lacquer Nail Base & Top Coat
Not shown. 226-251-0
12 ml
reg. \$17
\$12.99 each



Sold separately:
Bonus-Size Skin So Soft and Moisture Therapy Body Lotion Pump
 226-602-2
\$3.99



Bonus-Size Soft & Sensual Body Lotion
 1 litre
 226-505-5
 reg. \$28
\$19.99

Pump sold separately.



Bonus-Size Soft & Sensual Shower Gel
 1 litre
 225-969-7
 reg. \$25
\$19.99



Soft & Sensual Shower Gel
 150 ml
 225-970-2
 reg. \$12
\$5.99



Original Bath Oil
 500 ml
 225-567-3
 reg. \$34
\$21.99



Bonus-Size Original Bath Oil
 739 ml
 225-567-2
 reg. \$42
\$26.99



Original Bath Oil Spray
 150 ml
 225-674-4
 reg. \$20
\$11.99
 Sold separately:
Bath Oil Spray Pump
 (not shown)
 226-602-6
\$3.99



Original Gelled Body Oil
 200 ml
 225-599-3
 reg. \$19
\$10.99



Soft & Sensual Body Lotion
 350 ml
 107-757-5
 reg. \$16
\$9.99



Bonus-Size Soft & Sensual Bath Oil
 739 ml
 225-567-4
 reg. \$42
\$26.99



Soft & Sensual Bath Oil
 500 ml
 225-566-0
 reg. \$34
\$21.99



Soft & Sensual Gelled Body Oil
 200 ml
 226-454-2
 reg. \$19
\$10.99



Original Shower Gel
 150 ml
 225-970-0
 reg. \$12
\$5.99



Bonus-Size Original Shower Gel
 1 litre
 225-969-4
 reg. \$25
\$19.99



Original Body Lotion
 350 ml
 226-457-0
 reg. \$16
\$9.99



Bonus-Size Original Body Lotion
 1 litre
 226-504-9
 reg. \$28
\$19.99

Pump sold separately.

Soft & Sensual Beauty Bar Soap
 90 g
 224-348-2
 reg. \$6.50
\$4.99



Soft & Sensual Replenishing Hand Cream
 100 ml
 114-351-6
 reg. \$7
\$3.99



Acne-Prone Skin Soothing Spot Gel
 15 ml
 225-722-0
 reg. \$24
\$17.99



Acne-Prone Skin Foaming Cleanser
 150 ml
 225-721-9
 reg. \$24
\$17.99

Original Beauty Bar Soap
 90 g
 224-348-1
 reg. \$6.50
\$4.99



Original Replenishing Hand Cream
 100 ml
 107-728-6
 reg. \$7
\$3.99



Radiant Moisture Shower Gel
 150 ml
 225-970-3
 reg. \$12
\$5.99



Bonus-Size Radiant Moisture Bath Oil
 739 ml
 225-599-4
 reg. \$42
\$26.99

Acne-Prone Skin Body Pads
 70 pads
 225-665-5
 reg. \$42
\$34.99



Acne-Prone Skin Exfoliating Body Wash
 300 ml
 225-721-7
 reg. \$28
\$22.99



Acne-Prone Skin Gentle Body Wash
 300 ml
 225-665-4
 reg. \$28
\$22.99



Acne-Prone Skin Soothing Gel
 180 ml
 225-665-7
 reg. \$28
\$22.99



Bonus-Size Radiant Moisture Shower Gel
 1 litre
 225-969-9
 reg. \$25
\$19.99



Bonus-Size Radiant Moisture Body Lotion
 1 litre
 226-505-2
 reg. \$28
\$19.99

Pump sold separately.



Radiant Moisture Replenishing Hand Cream
 100 ml
 226-456-7
 reg. \$7
\$3.99



Bonus-Size Supreme Nourishment Body Lotion
 1 litre
 226-506-2
 reg. \$28
\$19.99

Pump sold separately.

<p>Sold separately: Bonus-Size Skin So Soft and Moisture Therapy Body Lotion Pump 226-602-2 \$3.99</p> 	<p>Bonus-Size Moisture Therapy Intensive Healing & Repair Body Lotion 1 litre 226-456-4 reg. \$28 \$19.99 Pump sold separately.</p> 	<p>Bonus-Size Moisture Therapy Daily Skin Defense Body Lotion 1 litre 226-455-9 reg. \$28 \$19.99 Pump sold separately.</p> 	<p>Bonus-Size Moisture Therapy Calming Relief Body Lotion 1 litre 226-456-6 reg. \$28 \$19.99 Pump sold separately.</p> 
---	--	--	--

Skin So Soft Comforting Shea Bath Oil
 500 ml
 225-567-1
 reg. \$34
\$21.99



Skin So Soft Supreme Nourishment Enriching Coconut Oil Wash
 350 ml
 226-401-7
 reg. \$24
\$14.99




<p>Moisture Therapy Intensive Healing & Repair Extra Strength Cream 150 g 101-614-5 reg. \$12 \$7.99</p> 	<p>Moisture Therapy Balance + Soothe Body Wash 390 ml 222-431-7 reg. \$33 \$25</p> 	<p>Moisture Therapy Balance + Soothe Body Lotion 390 ml 222-431-8 reg. \$35 \$28</p> 	<p>Foot Works Deodorizing Spray 100 g 116-648-6 reg. \$14 \$8.99</p> 
---	---	---	---

Véilment Glacial Water Cooling Body Scrub & Cleanser
 400 ml
 226-060-1
 reg. \$21
\$18



Véilment Himalaya Pink Salt Body Scrub & Cleanser
 400 ml
 226-075-8
 reg. \$21
\$18



Véilment Himalaya Pink Salt Exfoliating Soap
 150 g
 222-462-0
 reg. \$12
\$8.50



<p>Foot Works Overnight Renewing Cream 100 ml 226-456-0 reg. \$13 \$8.99</p> 	<p>Foot Works Deep Moisturizing Cream 75 ml 116-648-2 reg. \$10 \$6.99</p> 	<p>Foot Works Intensive Moisture Foot Cream 75 ml 116-647-9 reg. \$10 \$6.99</p> 	<p>Foot Works Arthritis Achy Foot and Muscle Cream 75 ml 117-059-3 reg. \$10 \$6.99</p> 
--	--	--	---

Véilment Black Rose Body Scrub & Cleanser
 400 ml
 226-075-9
 reg. \$21
\$18



Véilment Dead Sea Salt Body Scrub & Cleanser
 400 ml
 226-076-0
 reg. \$21
\$18



Véilment Lumière Sunless Tanning Serum
 28 ml
 Light/Medium 223-981-7
 Medium/Dark 223-982-3
 reg. \$34
\$27.99




<p>Foot Works Intensive Callus Cream 100 ml 226-516-7 reg. \$13 \$8.99</p> 	<p>Foot Works Pedicure Tool 102-612-1 reg. \$16 \$11.99</p> 	<p>Foot Works Pedicure Kit 441-304 reg. \$16 \$11.99</p> 
--	--	--

Avon Aromatherapy Body Lotion Bright Day Ahead
 171 ml
 225-535-8
 reg. \$24
\$19.99



Avon Aromatherapy Body Lotion Bye-Bye Stress
 171 ml
 225-533-1
 reg. \$24
\$19.99



Avon Aromatherapy Body Lotion Sleep Tight Zzz
 171 ml
 225-534-5
 reg. \$24
\$19.99



❖ Senses Gratitude
Lavender &
Cedarwood Candle
9 cm H x 8 cm diam.
198.4 g 224-993-4
reg. \$30
\$24.99



Senses Gratitude
Lavender &
Cedarwood
Room Spray
96 ml
226-249-4
reg. \$18
\$14.99



Senses Gratitude
Lavender &
Cedarwood
Air Diffuser
Six diffuser
reeds.
Fragrance oil,
70 ml.
224-993-6
reg. \$40
\$34.99



Senses Gratitude
Lavender &
Cedarwood
Shower Steamers
28 g each
224-994-1 reg. \$35
\$29.99 set of 6



Senses
Blushing
Cherry
Blossom
Hydrating
Shower
Gel
150 ml
225-971-1
reg. \$9
\$5.99



Senses
Silky
Vanilla
Hydrating
Shower
Gel
150 ml
108-470-6
reg. \$9
\$5.99



Senses
Fresh
Cucumber
& Melon
Hydrating
Shower
Gel
150 ml
108-427-5
reg. \$9
\$5.99



Senses
Juicy
Pomegranate
& Mango
Hydrating
Shower Gel
150 ml
108-471-4
reg. \$9
\$5.99



Senses Gratitude
Lavender &
Cedarwood Bath Salts
354 g 224-996-6
reg. \$30
\$24.99



Senses
Sparkling
Grapefruit
& Orange
Blossom
Shower Gel
295 ml
226-511-1
reg. \$24
\$19.99



Senses
Sparkling
Grapefruit
& Orange
Blossom
Body Lotion
236 ml
226-511-0
reg. \$24
\$19.99



Senses
Sparkling
Grapefruit
& Orange
Blossom
Body Mist
236 ml
221-935-5
reg. \$25.50
\$20.99



Senses
Cherry
Blossom
Bubble
Bath
700 ml
109-259-8
reg. \$16
\$9.99



Senses
Vanilla
Cream
Bubble
Bath
700 ml
225-970-7
reg. \$16
\$9.99



Senses
Cucumber
Melon
Bubble
Bath
700 ml
226-404-4
reg. \$16
\$9.99



Senses
Orange &
Honeysuckle
Bubble Bath
700 ml
226-408-6
reg. \$16
\$9.99



Senses
Sparkling
Grapefruit
& Orange
Blossom
Hand Soap
300 ml
226-408-0
reg. \$20
\$14.99



Senses
Sparkling
Grapefruit
& Orange
Blossom
Hand
Cream
75 ml
222-938-5
reg. \$9
\$6.99



Senses
Cozy
Vanilla &
Coconut
Shower
Gel
295 ml
226-509-9
reg. \$24
\$19.99



Senses
Cozy
Vanilla &
Coconut
Body
Lotion
236 ml
221-935-9
reg. \$24
\$19.99



Senses
Soft Pink
Bubble
Bath
700 ml
109-260-2
reg. \$16
\$9.99



Senses
Sensitive
Skin
Bubble
Bath
700 ml
225-970-5
reg. \$16
\$9.99



Senses
Endless
Ocean
Bubble
Bath
700 ml
109-260-1
reg. \$16
\$9.99



Senses
Lily &
Honeysuckle
Blossom
Bubble Bath
700 ml
109-228-8
reg. \$16
\$9.99



Senses Cozy Vanilla
& Coconut Body Scrub
255 g 224-996-8
reg. \$30
\$20.99



Senses
Cozy
Vanilla &
Coconut
Body Mist
236 ml
221-935-8
reg. \$25.50
\$20.99



Senses
Cozy
Vanilla &
Coconut
Hand Soap
300 ml
222-938-4
reg. \$20
\$14.99



Senses
Cozy
Vanilla &
Coconut
Hand
Cream
75 ml
226-452-3
reg. \$9
\$6.99



Senses
Lavender
Garden
Bubble
Bath
700 ml
109-282-3
reg. \$16
\$9.99



Senses
Fresh
Bergamot
& Wild Mint
Hand
Cream
75 ml
222-938-6
reg. \$9
\$6.99



Avon
Shower
Brush
224-951-5
reg. \$14
\$9.99



Exfoliation Mitt
226-176-2
reg. \$15
\$12.50





Skin So Soft Bug Guard Plus Icaridin Insect Repellent Spray I
113 g
453-314
reg. \$25
\$16.99



Skin So Soft Bug Guard Plus Icaridin Insect Repellent Spray II
236 ml
120-437-7
reg. \$28
\$19.99
Pump sold separately.



Sold separately:
Skin So Soft Bug Guard Plus Icaridin Insect Repellent Spray II Pump
for 236 ml
226-602-4
\$3.25



Skin So Soft Bug Guard Plus Icaridin Insect Repellent Towelettes
23 cm L x 14 cm W,
10.9 g
107-390-6
reg. \$22
\$14.99
pack of 8



Skin So Soft Bug Guard Plus Icaridin Insect Repellent Spray II
118 ml
226-030-5
reg. \$18
\$11.99
Pump sold separately.



Sold separately:
Skin So Soft Bug Guard Plus Icaridin Insect Repellent Spray II Pump
for 118 ml
226-602-5
\$2.99



Véilment Care Lip Balm
4.1 g
Strawberry
226-453-1
Cherry
226-452-9
reg. \$3
1.99 each



Moisture Therapy Moisturizing Lip Treatment Balm
4.1 g
Intensive Healing & Repair
226-451-8
Daily Defense
226-451-6
reg. \$3
1.99 each



Skin So Soft Supreme Nourishment Tropical Coconut Lip Balm
4.1 g
222-944-3
reg. \$3
\$1.99



Roll-On Anti-Perspirant Deodorant
75 ml
reg. \$5
\$3.69 each



On Duty Sport
380-309



Avon Microbiome by REACH® Hygiene Deodorant Stick
75 g 224-078-1
reg. \$18
\$14.99



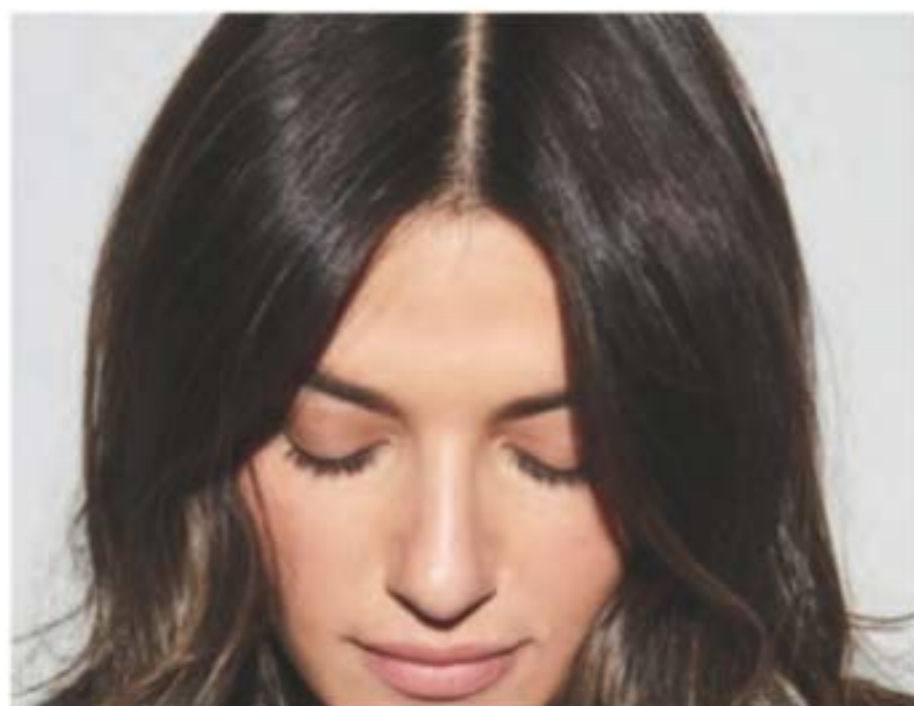
Perfumed Liquid Deodorant
59 ml
298-088
reg. \$9
\$6.50



Avon Care Silicone Glove Protective Hand Cream
100 ml
225-718-6
reg. \$9
\$3.99



Moisture Therapy Intensive Healing & Repair Hand Cream
125 ml
225-617-8
reg. \$9
\$3.99



Root Touch-Up
7 g
reg. \$26
\$22 each

Reddish Brown 222-134-9 Light Brown 222-135-0 Dark Brown 222-135-2 Black 222-135-3



CHI® Essentials Replenishing Shampoo
355 ml
222-707-3
reg. \$28
\$22.50



CHI® Essentials Moisturizing Conditioner
355 ml
222-707-4
reg. \$28
\$22.50



CHI® Essentials Repairing Serum
177 ml
222-707-5
reg. \$46
\$37



CHI® Essentials Revive Keratin + Bonding Restoring Shampoo
355 ml
224-991-6
reg. \$35
\$27.99



CHI® Essentials Revive Keratin + Bonding Restoring Conditioner
355 ml
224-991-7
reg. \$35
\$27.99



CHI® Essentials Revive Keratin + Bonding Protecting Serum
88 ml
224-991-8
reg. \$59
\$48.99



❖ **CHI® Volcanic Lava Ceramic Pro Spin 'n' Curl**
222-338-1
reg. \$210
\$189



❖ **CHI® Advanced Ionic Compact Hair Dryer**
Attachments included.
222-337-9
reg. \$175
\$159



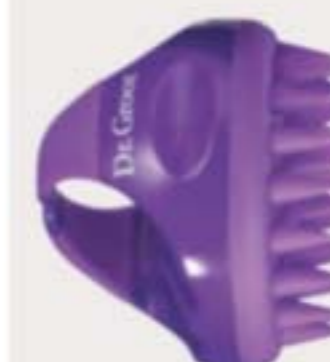
BioSilk® Silk Therapy®
167 ml
222-387-5
reg. \$49
\$39



Dr. Groot Microbiome Scalp Fortifying Hair-Thickening Shampoo
400 ml
222-566-0
reg. \$49
\$41



Dr. Groot Microbiome Scalp Fortifying Serum Treatment
200 ml
222-566-2
reg. \$49
\$41



Dr. Groot Premium Scalp Cleansing Brush
223-965-9
reg. \$26
\$21



Elastine Salon de Color Color Vibe Purple Shampoo
250 ml
225-066-9
reg. \$24
\$19.99



Elastine Salon de Color Color Vibe Purple Conditioner
250 ml
225-067-1
reg. \$24
\$19.99



Avon Detangling Comb
226-274-7
reg. \$8
\$6.99



Avon Blow-Dry Round Hairbrush
226-262-3
reg. \$25
\$19.99



Avon Compact Hairbrush
226-262-2
reg. \$14
\$10.99



Avon Detangling Hairbrush
226-262-4
reg. \$18
\$13.99



**Advance Techniques
Daily Shine
2-in-1 Shampoo
& Conditioner**
350 ml 226-390-1
reg. \$15
\$9.99



**Elastine
PropoliThera
Volumizing
Shampoo**
500 ml
222-244-8
reg. \$26
\$22.49



**Elastine
PropoliThera
Volumizing
Conditioner**
500 ml
222-244-9
reg. \$26
\$22.49



**Elastine
PropoliThera
Damage
Repair
Shampoo**
500 ml
226-136-9
reg. \$26
\$22.49



**Advance
Techniques
360 Nourish
with
Moroccan
Argan Oil
Leave-In
Treatment**
60 ml
226-446-0
reg. \$22.50
\$15.49



**Advance
Techniques
Daily Shine
Dry Ends
Serum**
60 ml
226-446-1
reg. \$16
\$11.99



**Elastine
Botanicals
Rosemary
& Sea Salt
Volumizing
Shampoo**
200 ml
225-540-3
reg. \$8
\$6.29



**Elastine
Botanicals
Rosemary
& Sea Salt
Volumizing
Conditioner**
200 ml
225-540-4
reg. \$8
\$6.29



**Elastine
PropoliThera
Damage
Repair
Conditioner**
500 ml
226-137-0
reg. \$26
\$22.49



**Elastine
PropoliThera
Hair Oil
Serum**
170 ml
222-245-4
reg. \$26
\$22.49



**Elastine PropoliThera
Hair Mask**
300 ml 226-137-1
reg. \$26
\$22.49



**Elastine
Botanicals
Cherry
Blossom &
Hyaluronic
Acid
Moisturizing
Shampoo**
200 ml
225-540-0
reg. \$8
\$6.29



**Elastine
Botanicals
Cherry
Blossom &
Hyaluronic
Acid
Moisturizing
Conditioner**
200 ml
225-540-2
reg. \$8
\$6.29



**Elastine
Botanicals
Argan &
Castor
Anti-Frizz
Shampoo**
200 ml
225-509-9
reg. \$8
\$6.29



**Elastine
Botanicals
Argan &
Castor
Anti-Frizz
Conditioner**
200 ml
225-510-6
reg. \$8
\$6.29



**Elastine
PropoliThera
Leave-In
Conditioner**
240 ml
222-551-1
reg. \$27
\$21



**Elastine
PropoliThera
Serum
Treatment**
230 ml
222-627-0
reg. \$31
\$26



**Elastine PropoliThera
Hair Deep Conditioning
Treatment Cap**
226-184-4
reg. \$11
\$9.99



**Elastine
Moisture
Essentials
Volume
Shampoo**
375 ml
224-075-9
reg. \$12.50
\$9.99



**Elastine
Moisture
Essentials
Volume
Conditioner**
375 ml
224-076-0
reg. \$12.50
\$9.99



**Elastine
Moisture
Essentials
Shine
Shampoo**
375 ml
224-076-1
reg. \$12.50
\$9.99



**Elastine
Moisture
Essentials
Shine
Conditioner**
375 ml
224-076-2
reg. \$12.50
\$9.99



**Elastine
PropoliThera
Aloe
Dual-Active
Hair Serum**
100 ml
222-551-2
reg. \$42
\$35



**Elastine
HempharmX
Weightless
Hydration
Shampoo**
400 ml
222-687-3
reg. \$34
\$28



**Elastine
HempharmX
Weightless
Hydration
Conditioner**
400 ml
222-687-4
reg. \$34
\$28

THE WOW DEAL

**5-PIECE SET
ONLY \$52**

To order items on this page,
please go to avon.ca.

Anew Power Serum

30 ml

Anew Vitamin C Brightening Eye Cream

15 ml

**Rice Water Bright Rice Bran Gentle
Exfoliating Cleanser**

300 ml

**Senses Cozy Vanilla & Coconut
Shower Gel**

295 ml

**Senses Cozy Vanilla & Coconut
Hand Cream**

75 ml

\$167 total value

PAMPER YOUR SKIN FROM YOUR FACE
AND EYES TO ALL OVER YOUR BODY



Enjoy special prices
and offers with
an Avon account or
Representative.

© 2024 The Avon Company Canada Limited. All rights reserved.

CAMPAIGN 5, 2024

5500 TRANS-CANADA HWY.
POINTE CLAIRE, QUEBEC
H9R 1B6

1-800-265-2866

avon.ca



8 88761 70338 1
Pk of 10 4713101



8 88761 70962 8
Single 4722211

Brochure effective until _____



See our commitment at
avongivesback.ca

RETURN POLICY If you are not satisfied, return any item within 45 days. View Avon's full 45-Day Return Policy at avon.ca.