

FASHION & HOME

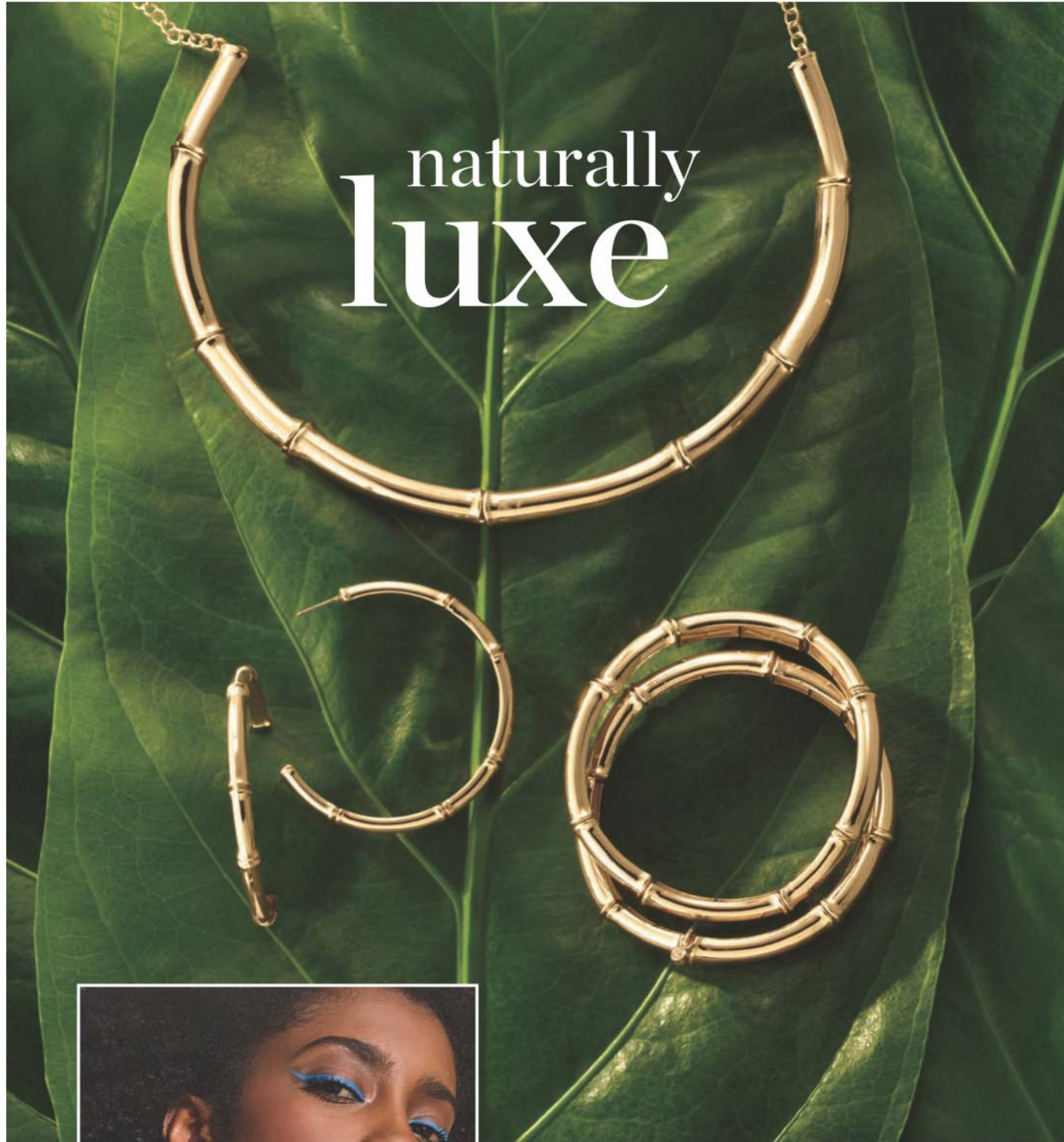
COLLECTIONS

FROM AVON



summer
style

REFRESH YOUR LOOK
& ELEVATE YOUR SPACE



naturally
luxe



Bold Bamboo Collection
Goldtone with textured bamboo motif.

Collar Necklace
16½" L with 3½" extender and lobster-clasp closure. **907-028**
reg. \$19.99
\$14.99

Hoop Earrings
2" diam. Pierced. **907-530**
reg. \$12.99
\$9.99

Stretch Bracelets
Set of two. Stretches to fit most. **908-340**
reg. \$16.99
\$12.99
the set

GET 2 BRACELETS SETS FOR \$20 OVER \$33 VALUE 224-690

Everyday Cable Collection

Silvertone links with textured antiqued detail.

A. Necklace
16½" L with 3½" extender. Lobster-clasp closure. **441-821**
reg. \$24.99
\$19.99

B. Earrings Pack
Set of five huggie hoop earrings pairs with crystal accents. Pierced. **443-145**
reg. \$19.99
\$14.99 the pack

C. Bracelet
7½" L with 1" extender. **441-836**
reg. \$16.99
\$12.99

D. Ring
With crystal accents. ½" W.
Sizes:
6 **442-297** 10 **443-130**
8 **442-608**
reg. \$16.99
\$12.99



A

B

pack of 5 pairs

C

D



letter
perfect



Over the Rainbow Initial Necklace
 Goldtone with multicolored glass stones. 16 1/2" with 3 1/2" extender. Lobster-clasp closure.
 reg. \$12.99 **\$9.99 each**



Blooming Florals Collection

Purple and clear stones set in goldtone.

Bracelet
 7 1/4" L with 1" extender.
492-016
 reg. \$19.99
\$14.99

Stud Earrings
 1" L. Pierced.
492-346
 reg. \$12.99
\$9.99

Necklace
 16 1/2" L with 3 1/2" extender.
492-001
 reg. \$39.99
\$29.99

Statement Ring
 1" L.
 Sizes:
 6 **492-040**
 8 **492-130**
 10 **492-183**
 reg. \$12.99
\$9.99

red, white & cool



American Ease Collection
 Silvertone with red, white and blue beads.

Drop Earrings
 With CZ accent.
 Approx. 2 1/2" L drop.
 Pierced.
598-744
 reg. \$12.99
\$9.99

Layered Necklace
 With genuine howlite stone. Longest layer, 30" L; shortest layer, 26" L with 3/2" extender. **598-228**
 reg. \$24.99
\$19.99

3-Stone Ring
 With genuine howlite stone.

Sizes:
 6 **598-232**
 8 **598-361**
 10 **598-539**
 reg. \$12.99
\$9.99

Coil Bracelet
 One size fits most.
598-600
 reg. \$16.99
\$12.99

genuine howlite stone



necklace and earrings set

Cyan Sea Collection

Goldtone with blue and green colored glass stones or beads.

Necklace and Earrings Set
 Necklace, 28" L with 3/2" extender. Pierced earrings, approx. 3/4" L drop. **546-214**
 reg. \$39.99
\$29.99 the set

Hoop Earrings
 Approx. 2" diam. Pierced. **546-400**
 reg. \$16.99
now \$12.99

Stretch Bracelet
 Stretches to fit most. **546-468**
 reg. \$12.99
\$9.99

Mosaic Watch
 Blue denim strap, 9" L. 32mm diam. case with mosaic detail. **546-472**
 reg. \$46.99
\$36.99



EASY-WEARING EVERYDAY ESSENTIALS

tanks reverse
from V-neck to
scoop neck



PACK
OF 2

❖ **2-Pack Reversible Tanks**
Includes black and white reversible tanks. Cotton/polyester. Center back length: 26" on medium; 27 1/2" on 1X. Machine wash, dry flat. Imported.
XS(0-2) **698-006** XL(16) **703-561**
S(4-6) **698-154** 1X(18W-20W) **704-410**
M(8-10) **701-277** 2X(22W-24W) **704-424**
L(12-14) **702-273** 3X(26W-28W) **704-439**
reg. \$24.99
\$18.99 the pack of 2

SIZE CHART			
SIZE	BUST	WAIST	HIP
XS 0/2	30.5"-32"	23.5"-25"	32.5"-34"
S 4/6	33.5"-35"	26.5"-28"	35.5"-37"
M 8/10	36.5"-38"	29.5"-31"	38.5"-40"
L 12/14	39.5"-41"	32.5"-34"	41.5"-43"
XL 16	43"-44"	35.5"-36.5"	44.5"-45.5"
1X 18W/20W	46.5"-48.5"	39"-41"	48"-50"
2X 22W/24W	50.5"-52.5"	43"-45"	52"-54"
3X 26W/28W	54.5"-56.5"	47"-49"	56"-58"



PACK
OF 2

❖ **2-Pack Crew-Neck Pocket Tees**
Includes black and white tees with rounded hem, crew neckline and chest pocket detail. Cotton/polyester. Center back length: 26" on medium; 28" on 1X. Machine wash, dry flat. Imported.
XS(0-2) **695-136** XL(16) **695-781**
S(4-6) **695-250** 1X(18W-20W) **696-170**
M(8-10) **695-265** 2X(22W-24W) **696-630**
L(12-14) **695-432** 3X(26W-28W) **696-659**
reg. \$24.99
\$18.99 the pack of 2



PACK
OF 3

❖ **3-Pack Panty Brief Set**
Pack of 3 full-coverage briefs includes purple, stripe and polka dot with bow detail on front. Polyester. Machine wash and dry. Imported.
XS(0-2) **705-799** XL(16) **705-880**
S(4-6) **705-841** 1X(18W-20W) **706-800**
M(8-10) **705-860** 2X(22W-24W) **706-814**
L(12-14) **705-875** 3X(26W-28W) **706-829**
reg. \$23.99
\$17.99 the pack of 3



PACK
OF 3

NEW
❖ **3-Pack Blue Panty Brief Set**
Pack of 3 full-coverage briefs includes geo print, blue and floral print with bow detail on front. Polyester. Machine wash and dry. Imported.
XS(0-2) **024-656** XL(16) **024-838**
S(4-6) **024-732** 1X(18W-20W) **024-857**
M(8-10) **024-785** 2X(22W-24W) **024-861**
L(12-14) **024-819** 3X(26W-28W) **025-064**
reg. \$23.99
\$17.99 the pack of 3



INTIMATE COMFORT



❖ **Playtex® 18 Hour® Original Comfort Strap® Wirefree Bra (4693)**

Back closure. Polyester/nylon/spandex/cotton. Hand wash, line dry. Imported. **White, Natural Beige or Toffee** (shown): 36-48B,C; 34-48D,DD; 38-48DDD. **Pretty Blush or Zen Blue:** 36-42B; 36C-44C,D; 38-46DD,DDD. **Sailor Blue:** 36-44C,D; 38-46DD; 44-46DDD. **Black:** 36-48B; 36-54C; 36-50D, 54D; 38-54DD. reg. \$39 **\$33.99**



Shown: Toffee



Shown: Pink Chic

❖ **Bali® Double-Support® Wirefree Bra (3820)**

Back closure. Nylon/spandex. Hand wash, line dry. Imported. **White:** 34-48B,C,D,DD. **Pink Chic:** 36-40B; 34-42C,D; 38-42DD. **Blushing Pink:** 34-40B; 34-42C,D; 36-42DD. reg. \$44 **\$34.99**



Shown: Soft Taupe.

❖ **Bali® One Smooth U® Smoothing and Concealing Underwire Bra (DF3W11)**

Back closure. Nylon/polyester/spandex. Hand wash, line dry. Imported. **Black:** 36-40B; 34-42C,D,DD. **Soft Taupe or White:** 36-40B; 34-42C,D,DD; 36-42DDD. reg. \$48 **\$38.99**



Shown: Blushing Pink.



❖ **Bali® Essentials Double Support Collection Hi-Cut Panty (DFDBHC)**

Ultrasoft panty with jacquard accents. Full front and back coverage. Wicking fabric keeps you cool. No-ride-up fit. Nylon/spandex/cotton. Machine wash, line dry. Imported. **\$13**

SIZE	BASIC SIZE	HIPS
6	M	38" - 39"
7	L	40" - 41"
8	XL	42" - 43"
9	2XL	44" - 45"
10	3XL	46" - 47"



Shown: Nude.



❖ **Bali® Comfort Revolution® Brief Panty (DF803J)**

Cool Comfort™ four-way fabric wicks moisture and flexes for a comfortable custom fit. Narrow leg bands and knit-in waistband help minimize panty lines. Nylon. Machine wash, line dry. Imported. **\$13**

SIZE	BASIC SIZE	HIPS
6/7	M/L	38" - 41"
8/9	XL/2XL	42" - 45"
10/11	3XL/4XL	46" - 49"



❖ **Racerback Comfort Support Bra**
Sleek, smooth and invisible under clothes. Adjustable straps. Wirefree cups with removable pads. Nylon/spandex. Hand wash, line dry. Imported.
reg. \$24.99
\$19.99 each

Black
XS(0-2) **094-752**
S(4-6) **094-771**
M(8-10) **095-467**
L(12-14) **095-744**
XL(16) **101-134**
1X(18W-20W) **109-776**
2X(22W-24W) **109-795**
3X(26W-28W) **115-338**

Beige
XS(0-2) **101-153**
S(4-6) **101-172**
M(8-10) **101-187**
L(12-14) **101-230**
XL(16) **109-560**
1X(18W-20W) **134-690**
2X(22W-24W) **134-780**
3X(26W-28W) **134-795**

BLACK

BEIGE

SMOOTHERS & SHAPERS



Bra not included.



❖ **Shaping Open-Bust Bodysuit**
Beige seamless shaping bodysuit. Open bust to wear your own bra. Convenient open gusset. All-over smoothing for tummy, waist, back, hips and thighs. Prevents chafing. Nylon/spandex. Hand wash, line dry. Imported.
reg. \$32.99
\$24.99

Beige
XS(0-2) **961-095**
S(4-6) **961-167**
M(8-10) **961-171**
L(12-14) **961-277**
XL(16) **961-430**
1X(18W-20W) **963-026**
2X(22W-24W) **963-079**
3X(26W-28W) **963-083**



BLACK

BEIGE

❖ **High Waist Thigh Shaper**
Seamless, thigh-shaping shorts. Double-layer panel for tummy control. Prevents chafing. Nylon/spandex. Inseam: 15 1/2" on medium; 16 3/4" on 1X. Hand wash, line dry. Imported.
reg. \$28.99
\$21.99 each

Black
XS(0-2) **954-890**
S(4-6) **955-074**
M(8-10) **955-165**
L(12-14) **955-170**
XL(16) **955-529**
1X(18W-20W) **959-801**
2X(22W-24W) **960-730**
3X(26W-28W) **960-744**

Beige
XS(0-2) **955-696**
S(4-6) **956-950**
M(8-10) **957-517**
L(12-14) **959-543**
XL(16) **959-620**
1X(18W-20W) **960-759**
2X(22W-24W) **960-926**
3X(26W-28W) **961-080**



BLACK

BEIGE

❖ **Shaping High Waist Brief**
Seamless shaping brief contours waist. Extra-firm panel for tummy control. Nylon/spandex. Hand wash, line dry. Imported.
reg. \$23.99
\$17.99 each

Black
XS(0-2) **963-098**
S(4-6) **963-227**
M(8-10) **963-270**
L(12-14) **963-519**
XL(16) **963-853**
1X(18W-20W) **963-978**
2X(22W-24W) **964-056**
3X(26W-28W) **964-477**

Beige
XS(0-2) **963-868**
S(4-6) **963-872**
M(8-10) **963-891**
L(12-14) **963-906**
XL(16) **963-963**
1X(18W-20W) **966-116**
2X(22W-24W) **966-537**
3X(26W-28W) **966-541**



❖ **Shaping Tank**
Seamless shaping scoop-neck tank. Stretchy fabric with built-in tummy control. Nylon/spandex. Center back length: 24" on medium; 25 1/2" on 1X. Hand wash, line dry. Imported.
reg. \$23.99
\$17.99 each

Beige
XS(0-2) **966-795**
S(4-6) **966-962**
M(8-10) **967-275**
L(12-14) **967-404**
XL(16) **967-567**
1X(18W-20W) **971-126**
2X(22W-24W) **971-130**
3X(26W-28W) **971-145**

Black
XS(0-2) **966-556**
S(4-6) **966-560**
M(8-10) **966-575**
L(12-14) **966-580**
XL(16) **966-628**
1X(18W-20W) **966-597**
2X(22W-24W) **968-688**
3X(26W-28W) **971-111**

BEIGE

BLACK



High Waist Thigh Shaper in Beige sold separately.

HAPPY FEET



❖ **Classic Unisex Slippers**
His or hers slip-on slippers with faux-sherpa lining. Man-made materials. Imported. reg. \$22.99
\$16.99 each pair

Black
S(5-6) 004-226
M(7-8) 004-264
L(9-10) 004-374
XL(11-12) 004-412
XXL(13-14) 004-450

Tan
S(5-6) 004-848
M(7-8) 004-829
L(9-10) 004-647
XL(11-12) 004-484
XXL(13-14) 004-465

Grey
S(5-6) 151-331
M(7-8) 151-350
L(9-10) 151-403
XL(11-12) 151-480
XXL(13-14) 151-547

UNISEX SIZE CHART

	WOMEN'S	MEN'S
S	5-6	
M	7-8	5-6
L	9-10	7-8
XL	11-12	9-10
XXL	13-14	11-12



lined with gel infused with jojoba and rose oil

❖ **Cooling Sock with Gel**
Purple sock lined with a moisturizing gel infused with jojoba and rose oil to help nourish feet. Non-slip dots on outsole. Fits shoe sizes 6-10. Cotton/polyester/spandex. Hand wash, line dry. Imported. 026-682
reg. \$19.99
\$14.99



PACK OF 10

❖ **10-Pack Fashion Ankle Socks**
Pack of 10 assorted solid and print ankle socks. Fits shoe sizes 6-10. Polyester/spandex. Machine wash and dry. Imported.
026-663 reg. \$16.99
\$12.99 the pack



❖ **Pedicure Gel Socks**
Pink pedicure-friendly heel sock lined with moisturizing paraffin-infused gel. Fits shoe sizes 6-10. Cotton/polyester/elastane. Hand wash, line dry. Imported. 025-079
reg. \$8.99
\$6.99



full inner silicone band keeps socks in place

❖ **Lace No-Show Foot Covers**
No-show socks with lace detail, ideal for flats. Fits shoe sizes 6-10. Nylon/spandex/cotton. Hand wash, lay flat to dry. Imported.
Blush 026-792
Black 026-697
reg. \$7.99
\$5.99 each pair



no-show ideal for flats



Blue
029-040



Grey
027-880

Black
026-850

❖ **Cotton Blend Comfort Compression Socks**

Over-the-calf compression socks with contrasting color detail. Light compression 8-15 mmHg. Fits shoe sizes 6-10. Polyester/cotton/spandex. Machine wash and dry. Imported. reg. \$13.99

\$10.99 each pair



Magenta
031-310



Blue
031-970

❖ **2-Pack Compression Sport Socks**

Two-packs of ankle-length socks with arch compression. Compression level 8-15 mmHg. Fits shoe sizes 6-10. Nylon/polyester/spandex/rubber. Machine wash and dry. Imported. reg. \$12.99

\$9.99 each pack

PACK
OF 2



❖ **Ladies' Cushion Sole Non-Binding Sock**

Black fashion non-binding comfort sock with smooth toe seam and cushioned sole. Fits shoe sizes 6-11. 6 1/2" L (length may vary based on individual calf size). Polyester/cotton/rubber/spandex. Machine wash and dry. Imported.

583-449 reg. \$8.99

\$6.99



❖ **Fashion Ruffle Socks**

Pink socks with ruffle detail at opening. Fits shoe sizes 6-10. Polyester/cotton/spandex. Machine wash and dry. Imported.

030-533 reg. \$8.99

\$6.99



Brown
Strength 1.50
704-917
Strength 2.00
704-960

❖ **Readers with Blue Light Blocking**

Reading glasses with blue-light-blocking lenses. Comes with pouch (polyester) and wipe cloth. Polycarbonate frames/acrylic lenses. One size. reg. \$12.99

\$9.99 each



Blue
Strength 1.50
704-496
Strength 2.00
704-788

Model is wearing
Blue Readers.

KITCHEN IN SYNC



NEW

❖ Stainless Steel Drain Plugs

Set of 3 stainless steel drain plugs to prevent clogging. Fits most drains. Use in the bathroom too! Comes in 4½" diam., 3½" diam. and 3" diam. Stainless steel. Imported. **160-863** reg. \$16.99
\$12.99 the set of 3



NEW

❖ Soap Pump Dispenser and Sponge Holder

Dispenses the perfect amount of dish washing liquid! Press down to pump soap onto sponge. Includes 1 sponge. Holds 13 fl. oz. 5½" L x 3½" W x 4" H. Plastic, metal. Imported. **160-791** reg. \$19.99
\$14.99

Soap not included.



NEW

❖ Countertop Dish Drying Rack and Mat Set

The perfect combo of dish rack and drying mat to dry dishes efficiently and neatly while not taking up too much counter space. Mat can be folded up for easy storage. Prevents scratches and water buildup on counter. Dish rack holds eight plates and 12 pieces of stemware. Rack: 14½" L x 6⅝" W x 1½" H. Plastic. Mat: 15" L x 19¾" W. Poly/nylon. Imported. **219-399** reg. \$25.99
\$19.99 the 2-piece set



❖ Eraser Sponge 3-Pack

Just add water! Cuts through grease, soap scum and permanent marks without the scrubbing. Use in kitchen and bathroom and on walls, doors, floors, shoes, car and more. Textured side for tougher marks. Each, 4¼" L x 3" W x ¾" H. Melamine. Imported. **149-373** reg. \$4.99
\$3.99 the pack of 3

❖ Non-Scratch Scrub Sponge 3-Pack

Dual-sided: non-scratch scrubber scours to remove stains, dirt and grime fast and safely, even on non-stick cookware; super absorbent sponge to pick up spills. S-shape design for a comfortable hold. Each, 4½" L x 3" W x ¾" H. Cellulose. Imported. **149-369** reg. \$7.99
\$5.99 the pack of 3



10-PIECE SET

NEW

❖ **Mandoline Slicer, Cutter, Chopper and Grater**
Equipped with interchangeable blades, eliminating the need for a knife and cutting board! Easily grate, slice and peel your favorite greens and vegetables. It is so versatile, you can even strain, pour and separate eggs! Comes with 5 blades, peeler, egg separator, strainer, lid and slicing guard. 12" L x 8" W x 3 1/2" H. Plastic, stainless steel. BPA-free. Imported. **160-882** reg. \$34.99 **\$26.99** the 10-piece set



2-PIECE SET

NEW

❖ **Bell Pepper Corer Set**
Easily remove fruit and vegetable cores. Large corer is perfect for bell peppers and tomatoes. Small corer is perfect for chili peppers. Stacks together to save space when not in use. Large: 2 1/4" L x 2 3/4" W x 3" H; small: 1 1/4" L x 2" W x 3 1/2" H. Plastic. BPA-free. Imported. **168-659** reg. \$12.99 **\$9.99** the 2-piece set



NEW

❖ **Stainless Steel Tongs & Spatula**
Grab, flip and clean with this 3-in-1 cooking tong, flipper and scraper. 10 1/2" L x 3 1/4" W. Stainless steel. Imported. **168-128** reg. \$22.99 **\$16.99**



NEW

❖ **Stainless Steel Lid and Spoon Rest**
Keep your counter and cooktop clean with this space-saving lid and utensil rest all-in-one! 7 1/2" L x 6" W x 8 1/4" H. Stainless steel. Imported. **160-772** reg. \$22.99 **\$16.99**



CORE, STORE & MORE!

NEW

❖ **Silicone Stretch Storage Lid Set**
Reusable food and storage covers that are made from super-stretchy silicone. Comes in circular and square shapes but pliable enough to seal even odd-shaped containers. Pull tabs to easily remove lids. Includes: Six circular lids: approx. 2 1/2" to 7 3/4" diam. x 1 1/4" H; six square lids: approx. 2 3/4" to 7 3/4" sq. x 1 1/4" H. Silicone. Microwave- and dishwasher-safe. BPA-free. Imported. **219-217** reg. \$25.99 **\$19.99** the 12-piece set



12-PIECE SET



CLEAN & CLUTTER-FREE



Holds Homestar Mop Stick!

NEW

❖ **Wall Mount Mop & Broom Organizer**
Easily declutter your cleaning tools! Multi-functional design makes it easy to organize nearly any space. The perfect option for organizing mops, brooms, dustpans, keys, umbrellas and more. Installation required. Four slots that hold 3/4" to 1 1/2" diameter handles and five hooks. 22 lb. max. weight capacity. 14" L x 3 1/4" D x 2 1/4" H; depth extends to 4 1/2" D with hooks open. Plastic. Imported. **199-293** reg. \$22.99 **\$16.99**

❖ **Homestar Mop Stick**
Easy-grip handle. Head size: 9 7/8" L x 3 7/8" W. Handle: 39 1/2" L x 5/8" diam. Plastic/EVA/aluminum. Imported. **686-541** reg. \$19.99 **\$14.99**



360° SWIVEL HEAD WITH CLOTH GRIPPERS



❖ **Backseat Car Organizer**
Nine-pocket backseat organizer protects seats from scratches, spills, scuff marks and more. Quick-release, adjustable top and bottom straps. Water-resistant fabric for easy cleaning. Tablet pocket with clear touch-screen viewer window fits up to 10" tablet. 16" L x 24" H. Polyester. Imported. **017-988** reg. \$25.99 **\$19.99**



❖ **Car Cell Phone Holder**
Universal mounting on dash or window. Easy lock/release for quick mount/removal. Reusable suction cup for a powerful hold. 360° rotation for landscape or portrait viewing. Holds all phones/cases from 2" to 3 1/2" W. 5 3/4" H x 2 1/2" W x 4 3/8" D. Extends to 8 1/2" H. Plastic. Imported. **017-954** reg. \$16.99 **\$12.99**



❖ **Microfiber Car Duster**
Lint-free interior dusting with soft, deep pile chenille. Compact size for easy storing. Comfort-molded handle. 13" L x 2 5/8" W x 1 5/8" D. Plastic/polyester. Imported. **017-969** reg. \$11.99 **\$8.99**

set to stack

a trio of beaded bracelets to wear alone or together!



set of 3 bracelets



NEW

Healing Stretchy Bracelet Set
 Three-row beaded bracelet set with glass teardrop-shaped bead. Stretches to fit most.
 Lapis-colored set/goldtone **925-747**
 Amethyst-colored set/silvertone **925-732**
 reg. \$19.99
\$14.99 each set of 3

Enjoy these special prices and exclusive offers only when you shop with an Avon Representative.

© 2022 The Avon Company. All rights reserved.

CAMPAIGN 17 2022 - CAMPAIGN 19 2022
 THE AVON COMPANY
 165 BROADWAY, NY, NY 10006

Enjoy these special prices and exclusive offers only when you shop with an Avon Representative.

CAMPAIGNS 17-19, EFFECTIVE UNTIL _____

FIND ME AT WWW.AVON.COM/REPSTORE/ _____

If you are not satisfied, return any item within 45 days. View Avon's full 45-Day Return Policy at www.avon.com/shipping-returns.

